



① LEVEL II

AD A103056

ELECTROMAGNETIC TOPOLOGICAL DESCRIPTION OF A ROCKET VEHICLE IN FLIGHT

E. E. Vance

Dikewood Industries, Inc  
1009 Bradbury Drive, SE  
Albuquerque, NM 87106

*Handwritten signature*

June 1980



Final Report

DTIC  
ELECTE  
AUG 19 1981  
S B D

Approved for public release; distribution unlimited.

DTIC FILE COPY

AIR FORCE WEAPONS LABORATORY  
Air Force Systems Command  
Kirtland Air Force Base, NM 87117

81 8 18 080


This final report was prepared by the Dikewood Industries, Inc, Albuquerque, New Mexico, under Contract F29601-76-C-0149, Job Order 37630115 with the Air Force Weapons Laboratory, Kirtland Air Force Base, New Mexico. Dr. Michael G. Harrison (NTYE) was the Laboratory Project Officer-in-Charge.

When US Government drawings, specifications, or other data are used for any purpose other than a definitely related Government procurement operation, the Government thereby incurs no responsibility nor any obligation whatsoever, and the fact that the Government may have formulated, furnished, or in any way supplied the said drawings, specifications, or other data, is not to be regarded by implication or otherwise, as in any manner licensing the holder or any other person or corporation, or conveying any rights or permission to manufacture, use, or sell any patented invention that may in any way be related thereto.

This report has been authored by a contractor of the United States Government. The United States Government retains a nonexclusive, royalty-free license to publish or reproduce the material contained herein, or allow others to do so, for the United States Government purposes.

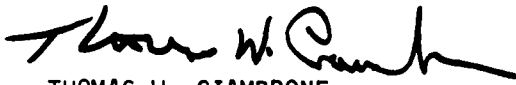
This report has been reviewed by the Public Affairs Office and is releasable to the National Technical Information Service (NTIS). At NTIS, it will be available to the general public, including foreign nations.

This technical report has been reviewed and is approved for publication.

  
MICHAEL G. HARRISON, PhD  
Project Officer

  
PHILIP CASTILLO, PhD  
Chief, Electromagnetics Branch

FOR THE DIRECTOR

  
THOMAS W. CIAMBRONE  
Colonel, USAF  
Chief, Applied Physics Division

UNCLASSIFIED

SECURITY CLASSIFICATION OF THIS PAGE (When Data Entered)

19. REPORT DOCUMENTATION PAGE		READ INSTRUCTIONS BEFORE COMPLETING FORM
1. REPORT NUMBER AFWL TR-79-133	2. GOVT ACCESSION NO. AD-A103 056	3. RECIPIENT'S CATALOG NUMBER
4. TITLE (and Subtitle) ELECTROMAGNETIC TOPOLOGICAL DESCRIPTION OF A ROCKET VEHICLE IN FLIGHT		5. TYPE OF REPORT & PERIOD COVERED Final Report
7. AUTHOR(s) E. E. Vance		4. PERFORMING ORG. REPORT NUMBER DC-FR-1289-2
9. PERFORMING ORGANIZATION NAME AND ADDRESS Dikewood Industries, Inc. 1009 Bradbury Drive, SE Albuquerque, NM 87106		6. CONTRACT OR GRANT NUMBER(s) F29601-76-C-0149
11. CONTROLLING OFFICE NAME AND ADDRESS Air Force Weapons Laboratory (NTYE) Kirtland Air Force Base, NM 87117		10. PROGRAM ELEMENT, PROJECT, TASK AREA & WORK UNIT NUMBERS 64711F/37630115
14. MONITORING AGENCY NAME & ADDRESS (if different from Controlling Office) 3763 17 0 11		12. REPORT DATE June 1980
		13. NUMBER OF PAGES 22
		15. SECURITY CLASS. (of this report) Unclassified
		15a. DECLASSIFICATION/DOWNGRADING SCHEDULE
16. DISTRIBUTION STATEMENT (of this Report) Approved for public release; distribution unlimited.		
17. DISTRIBUTION STATEMENT (of the abstract entered in Block 20, if different from Report)		
18. SUPPLEMENTARY NOTES		
19. KEY WORDS (Continue on reverse side if necessary and identify by block number) Missile Electromagnetic Pulse Topology Interaction		
20. ABSTRACT (Continue on reverse side if necessary and identify by block number) The system topology for a rocket vehicle in flight is first developed. This system topology partitions the interaction of the system with the EMP into external interaction, intermediate internal interaction, and internal interaction. For each of the three partitions representative elementary EMP interaction problems are identified and approaches to solving some of them are discussed.		

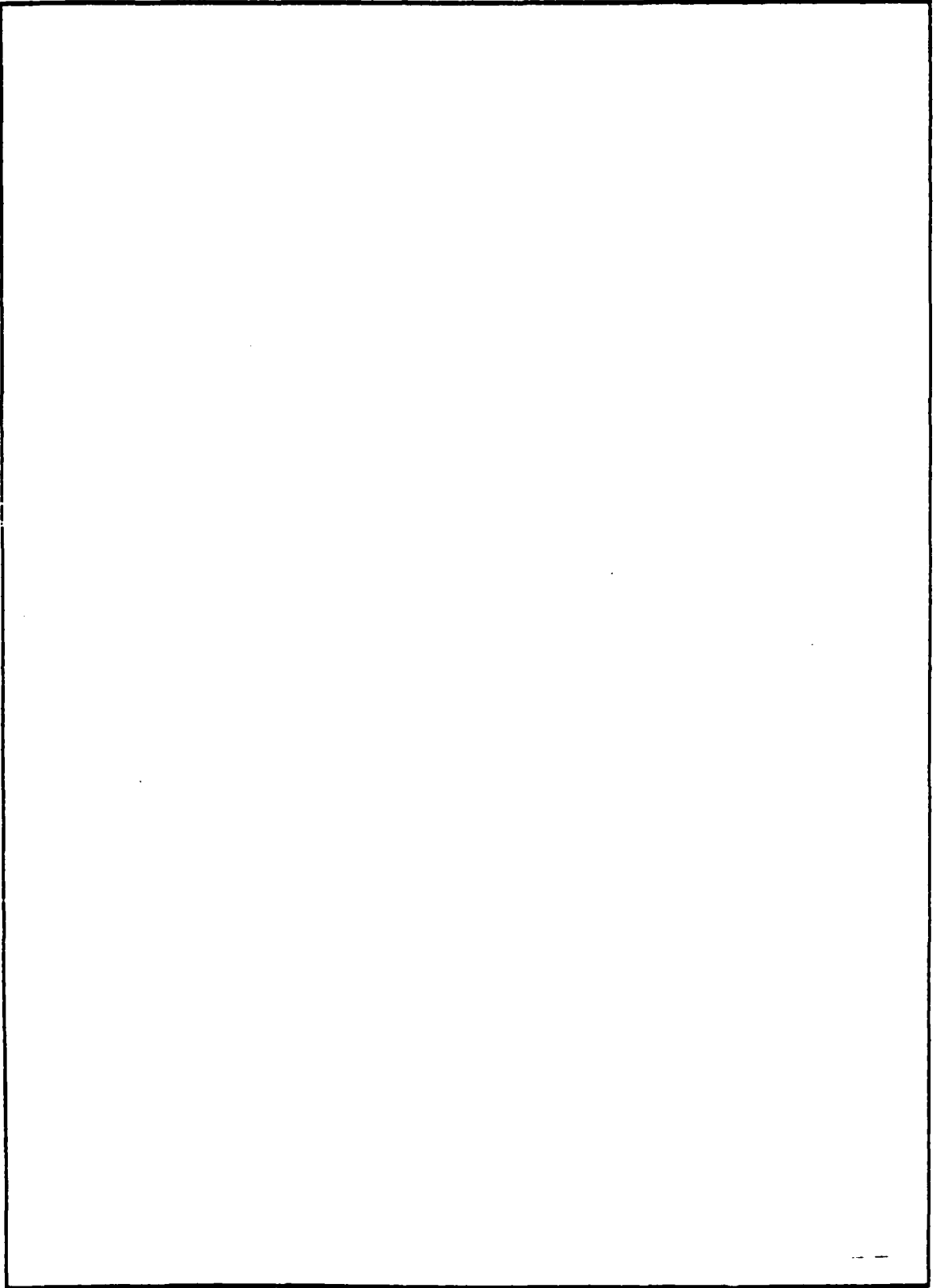
DD FORM 1 JAN 73 1473

UNCLASSIFIED

SECURITY CLASSIFICATION OF THIS PAGE (When Data Entered)

**UNCLASSIFIED**

**SECURITY CLASSIFICATION OF THIS PAGE(When Data Entered)**



**UNCLASSIFIED**

**SECURITY CLASSIFICATION OF THIS PAGE(When Data Entered)**

CONTENTS

<u>Section</u>		<u>Page</u>
I	INTRODUCTION	3
II	SHIELD TOPOLOGY	8
III	EXTERNAL INTERACTION	12
IV	INTERMEDIATE INTERNAL INTERACTION	17
V	INTERNAL INTERACTION	20

Accession For	
NTIS GRA&I	<input checked="" type="checkbox"/>
DTIC TAB	<input type="checkbox"/>
Unannounced	<input type="checkbox"/>
Justification	
By	
DTIC TAB/	
Availability Codes	
Avail and/or	
Dist Special	
<b>A</b>	

## ILLUSTRATIONS

<u>Figure</u>		<u>Page</u>
1	Multistage Rocket Vehicle, Wiring, and Cable Raceway	4
2	Typical Payload and Guidance Cabling	6
3	Typical Interstage Cabling	7
4	First-Level Shielding for Rocket Vehicles	9
5	Second-Level Shielding for Rocket Vehicle Circuits	10
6	Rocket Motor Exhaust Plumes	13
7	Quasistatic Current and Charge Distributions on Rocket With and Without Plume (Conceptual Representation)	14
8	External Coupling Parameters for Raceway Cover and Umbilical Connector	16
9	Excitation of Raceway Cable Through Apertures at Cover Joints	18
10	Determination of Raceway Cable Current From Skin Current and Cover Leakage: (a) Distributed Joint, (b) Discrete Joint, and (c) Superposition to Obtain Total Cable Current Voltage	19
11	Voltage and Current Delivered to Loads in Guidance System and Interstage Components: (a) Shielded Raceway Cable and Connectors, (b) Voltage and Current From Distributed Coupling (Cable Shield), and (c) Voltage and Current From Discrete Coupling (Connectors)	21

SECTION I  
INTRODUCTION

Typical elements of a multistage, long-range rocket vehicle are shown in figure 1 along with a representative electrical wire harness and external cable raceway. The external cable raceway for interconnecting the guidance and control system with the downstage components is commonly used for monocoque motor construction. The raceway cable is used by the guidance and control system to control motor ignition, thrust, vector (or other steering), stage separation, interstage jettison, and in some cases engine shutdown or thrust termination. The cable is also used to provide feedback on engine pressure, nozzle position, and perhaps other status or performance parameters to the control system. At staging, the wiring associated with the expended motor is jettisoned with the motor casing. The cable is usually provided with pullaway connectors to accommodate this operation, but mechanical and explosive cable cutters have also been used.

Smaller rocket vehicles used for ground-to-air, air-to-air, or air-to-ground missiles have similar components, but these vehicles are often one or two-stage vehicles and are usually smaller than the long-range, multistage vehicle. Smaller vehicles using forward-looking radar, infrared, or other target-seeking systems may also have the guidance and control package forward of the payload rather than aft of the payload as is usual in long-range vehicles. Finally, because the time of flight of the smaller vehicles is short, the in-flight characteristics of these vehicles are often less important than the pre-launch characteristics, insofar as interaction with the EMP is concerned. In this report, discussions are limited to the EMP effects on a long-range multistage vehicle. Other effects such as SGEMP will be neglected.

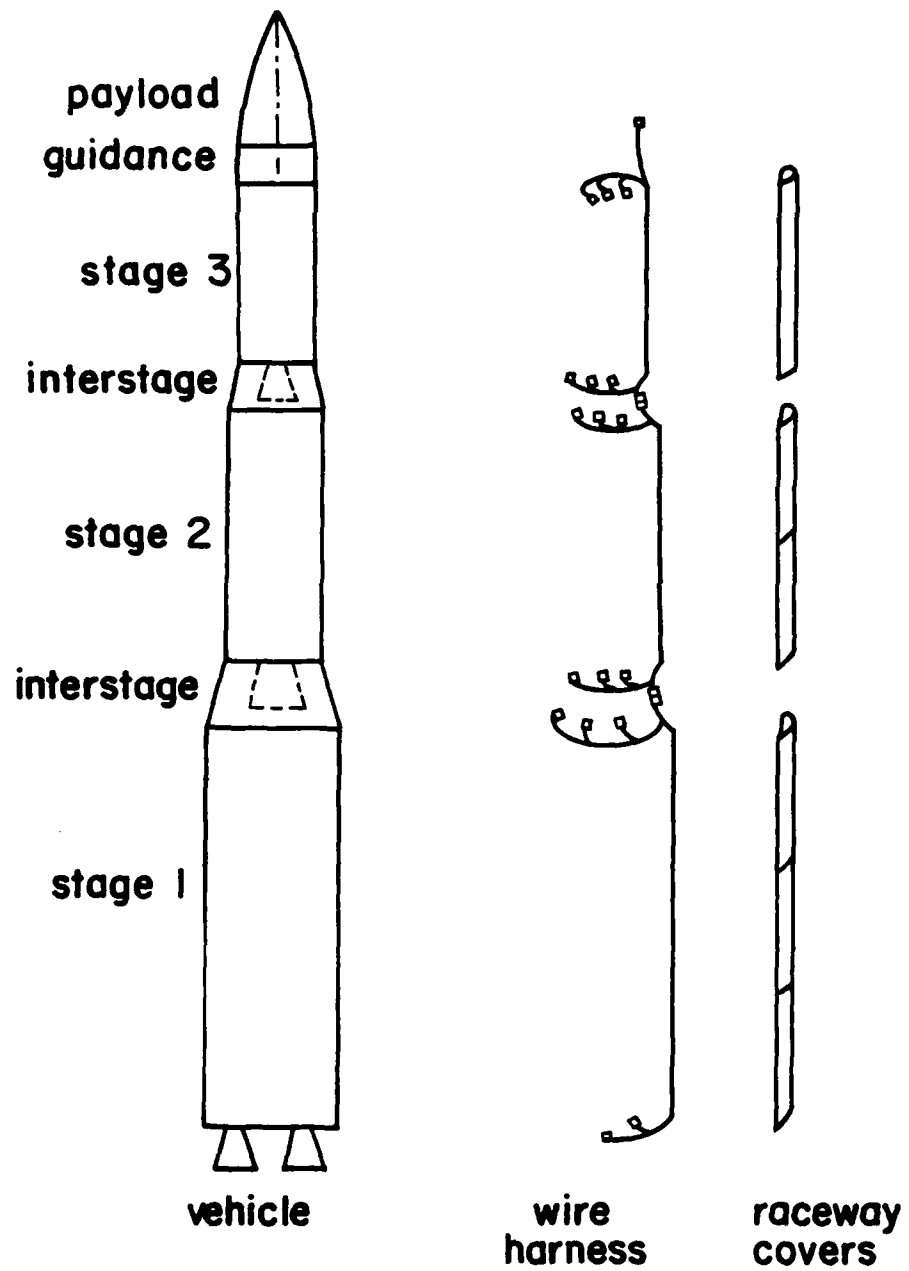


Figure 1. Multistage Rocket Vehicle, Wiring, and Cable Raceway

Representative wiring in the vicinity of the payload and guidance and control system is illustrated in figure 2. As illustrated, the raceway cable originates in the guidance and control system and branches to supply the downstage motor and staging functions. Other wiring associated with the guidance and control system may include telemetry or communication antenna cables and cabling to provide payload cover-removal, activation, and ejection. An umbilical cable is removed during launch; so the pins of the umbilical connector may be exposed to the EMP environment. Deadfacing connectors that cover, retract, or break contact with the pins may be used to reduce this exposure.

Representative wiring in an interstage area is shown in figure 3. The wiring in this region supports engine ignition and engine pressure monitoring, staging ordnance initiation, and perhaps thrust termination or motor destruction (for aborting the mission) on the downstage motor, and nozzle or thrust vector control and interstage-removal ordnance initiation for the upstage motor.

The sensitive circuits in a rocket vehicle are mainly in the guidance and control package which contains small-signal digital electronics for computing the vehicle trajectory and providing error-correction commands to the rocket steering system. These circuits are prone to EMP upset and damage. Additional sensitive circuits may be found in the steering system (near the motor nozzles) and in the staging ordnance system (electro-explosive devices).

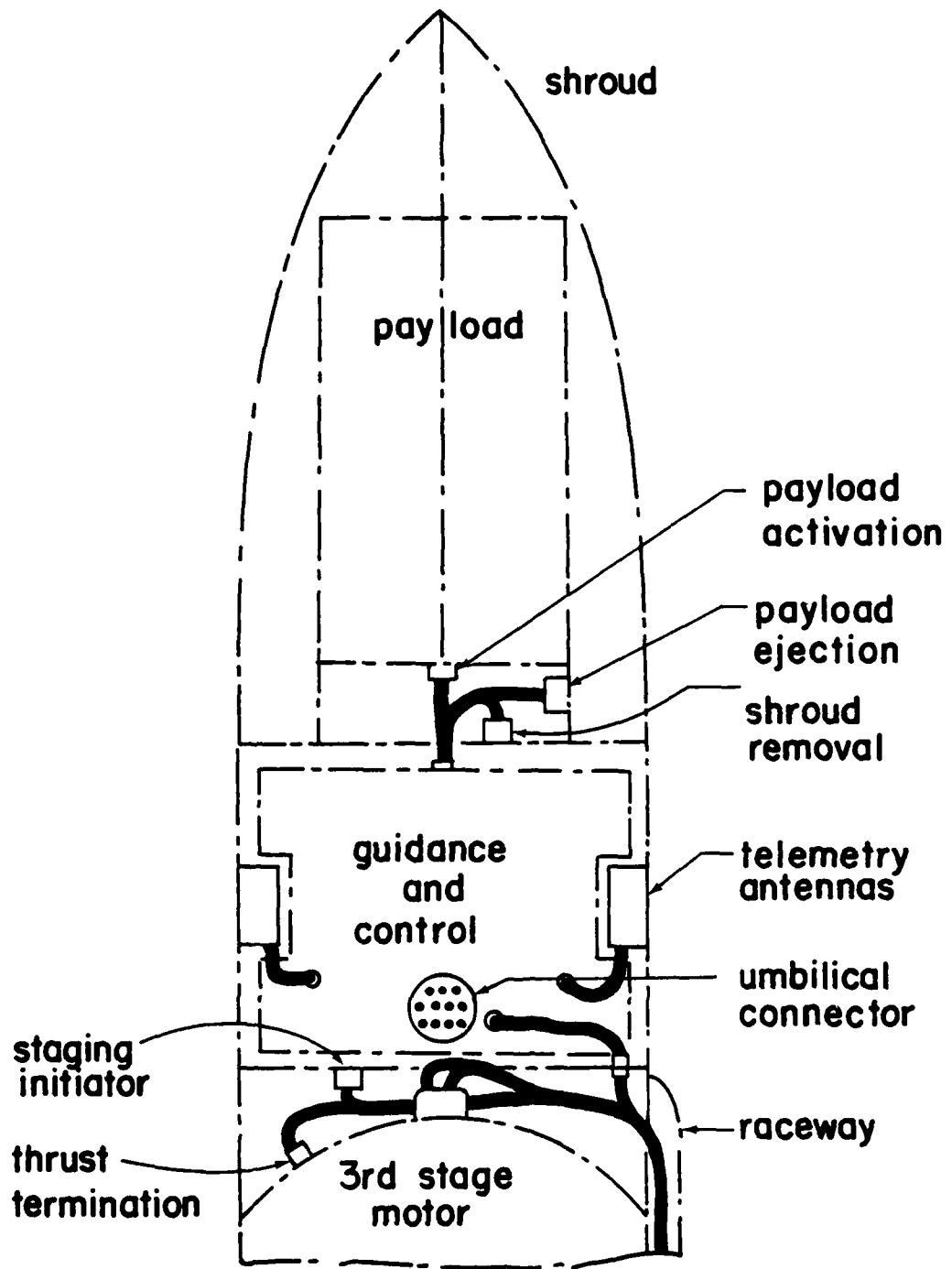


Figure 2. Typical Payload and Guidance Cabling

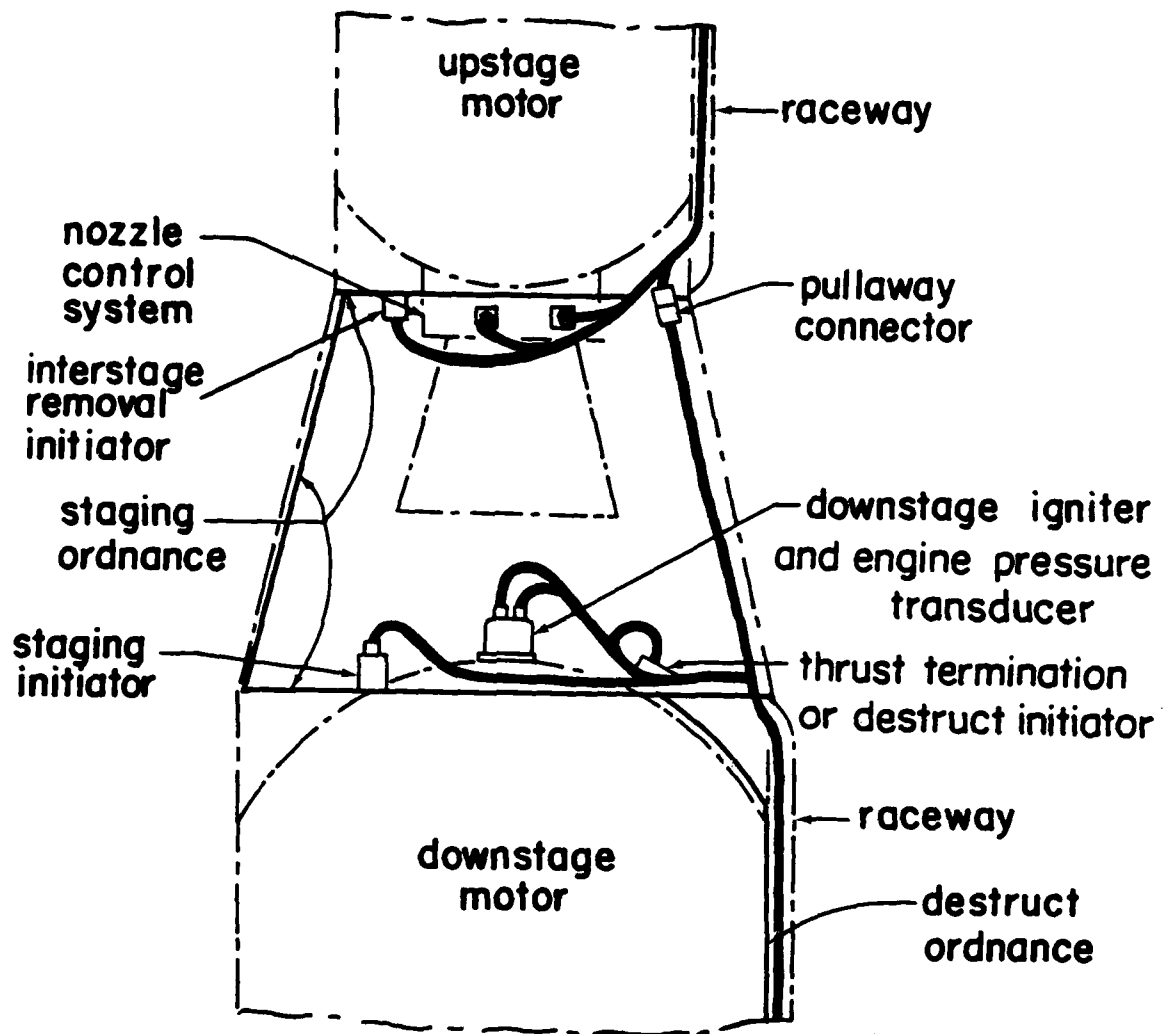


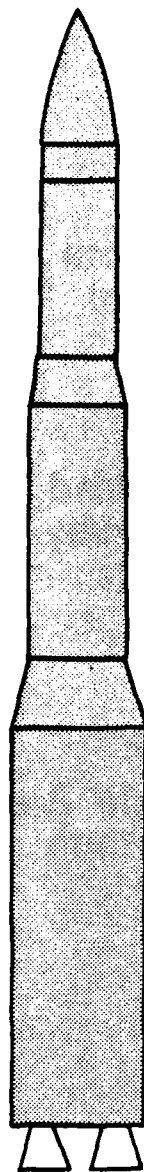
Figure 3. Typical Interstage Cabling

SECTION II  
SHIELD TOPOLOGY

The primary shield for the all-metal rocket vehicle is the vehicle skin and raceway cover. Because high strength-to-weight-ratio composite materials are displacing metals for large motor casings, however, it is common for one or more of the motors (e.g., the MX missile) to be EMP transparent. As illustrated in figure 4, the primary shield is then transferred from the metal motor casing shown on the left to the raceway and interstage structure shown on the right. The current density on the raceway will usually be larger on the nonmetallic rocket than on the all-metal vehicle, and unless particular care in maintaining the shielding integrity in the interstage area and at raceway joints is exercised, the effectiveness of the primary shield on the nonmetallic vehicle may be considerable less than that of the all metal rocket.

Compromises in the primary shield often occur at joints in the vehicle skin between stages, at joints in the cable raceway covers, and at access ports on the interstage structure on the skin of the guidance and control system. The shield is also compromised at the aft end of the vehicle where the end of the raceway cable and some of its branches may be exposed. In addition, the umbilical connector and any openings for antennas on the vehicle may provide potential shield penetrations.

A portion of the second-level shield for a typical rocket vehicle is illustrated in figure 5. The second-level shield is composed of the raceway cable shield; the housings for the electro-explosive devices, transducers, and nozzle control systems; and the guidance system container. In addition, the umbilical connector may constitute an abrogation of the two-level shielding topology if conductors from this connector are connected directly to small-signal circuits inside the guidance system. Deadfacing or wire-cutting



all metal skin



metal interstage  
and fittings

raceway, cable,  
and bond wire

nonmetallic motor  
casings and shroud

Figure 4. First-Level Shielding for Rocket Vehicles

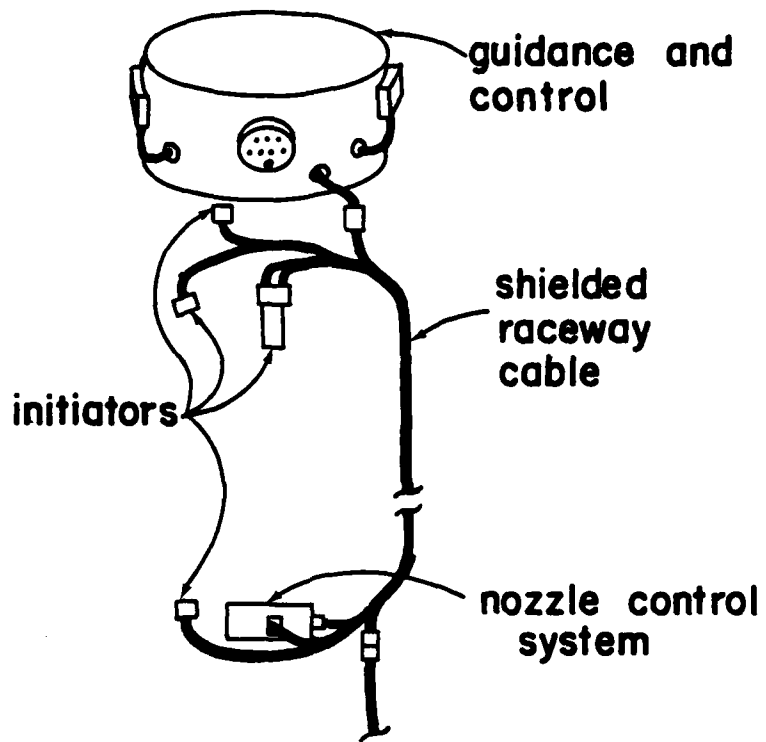


Figure 5. Second-Level Shielding for Rocket Vehicle Circuits

operations may partially restore the two-level shielding after the umbilical cable from the launch equipment is removed.

Leakage through the second-level shield may occur at connectors and along the raceway cable shield. EMP-induced interference penetrating the connector shells and cable shield can propagate along the internal conductors to the guidance and control system and to the electro-explosive initiators and nozzle control systems. EMP-induced interference can also enter the guidance and control system by means of leads from the umbilical connector and antennas.

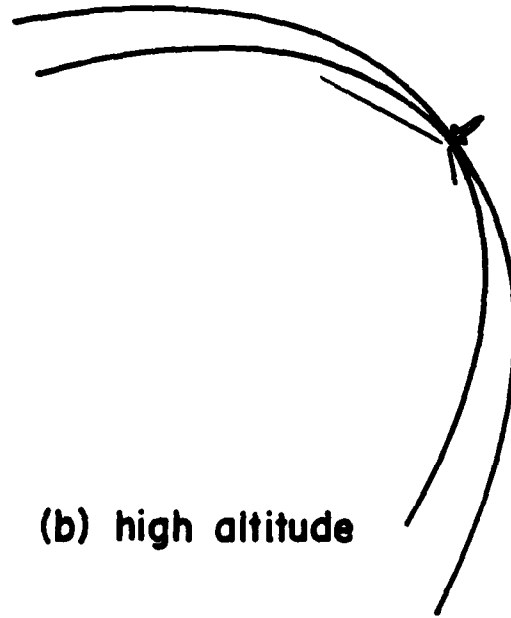
### SECTION III

#### EXTERNAL INTERACTION

The interaction of the all-metal rocket with the incident EMP induces surface current and charge densities and is amenable to analysis with the theory of cylindrical antennas. Because the configuration of vehicle changes as the motors are expended and jettisoned, the antenna analysis may have to be repeated for several configurations. A three-stage rocket may have 3, 4, or 5 configurations during its flight (4 if the third stage is jettisoned, 5 if the payload cover or shroud is also removed). These configuration changes primarily affect the amount of analysis required, rather than the techniques to be used. In the final configuration with the third stage and shroud removed, however, the vehicle may be more nearly characterized as a satellite than as a rocket.

A more serious complication of the analysis is encountered if the effects of the motor exhaust plume are to be determined. This complication results from the fact that the conductivity of the plume is much less than that of the metal skin and varies spatially within the plume, that the size and shape of the plume vary with altitude (see figure 6), and that the electrical properties of the plume are not thoroughly understood. Because the plume conductivity depends strongly on traces of easily ionized alkaline elements in the fuel, predictions of the conductivity based on the thermochemistry of combustion have been marginal. The attachment of the plume to the vehicle also involves complex processes in the ion sheath and boundary layer at the nozzle which are poorly understood. Nevertheless, it is believed that the plume has the effect of extending the effective length of the vehicle and causing the current density at the aft end of the vehicle to be enhanced as illustrated in figure 7.

(c) very high  
altitude or  
exoatmospheric



(b) high altitude



(a) low altitude



Figure 6. Rocket Motor Exhaust Plumes

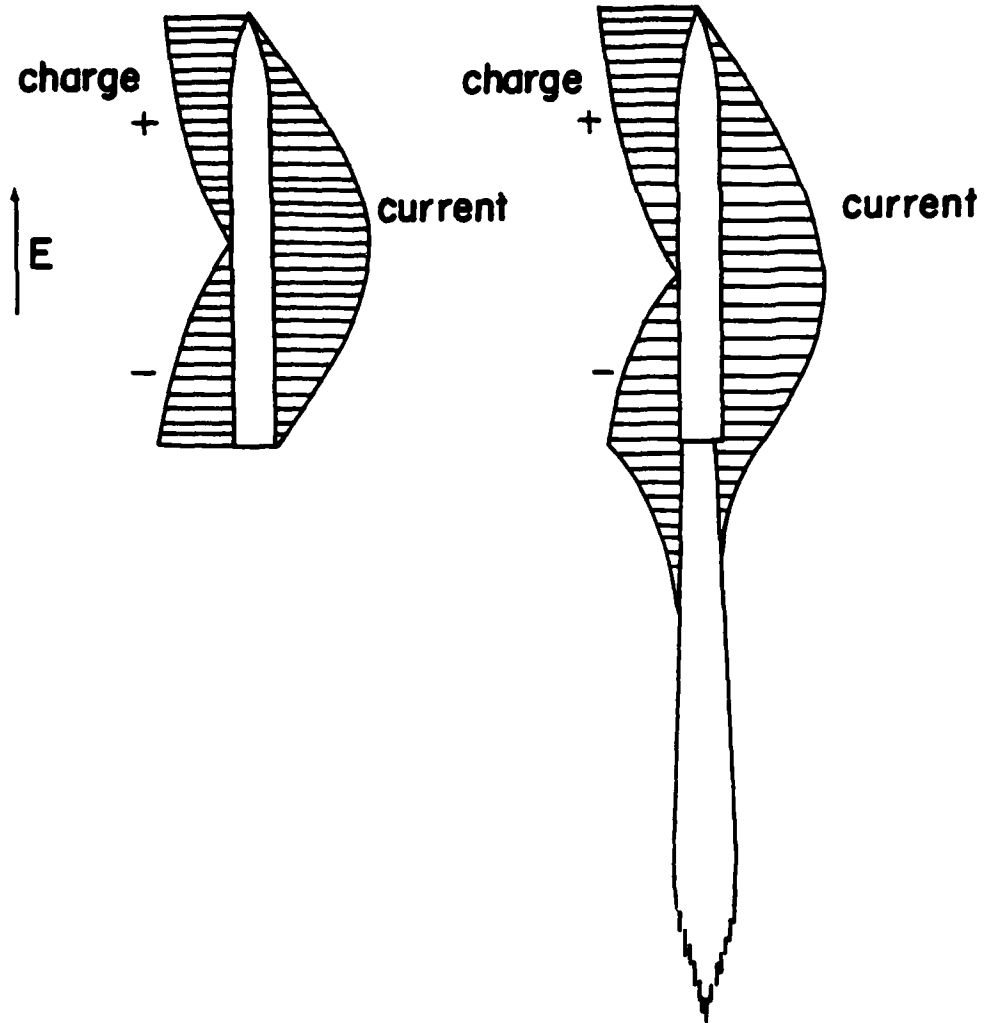
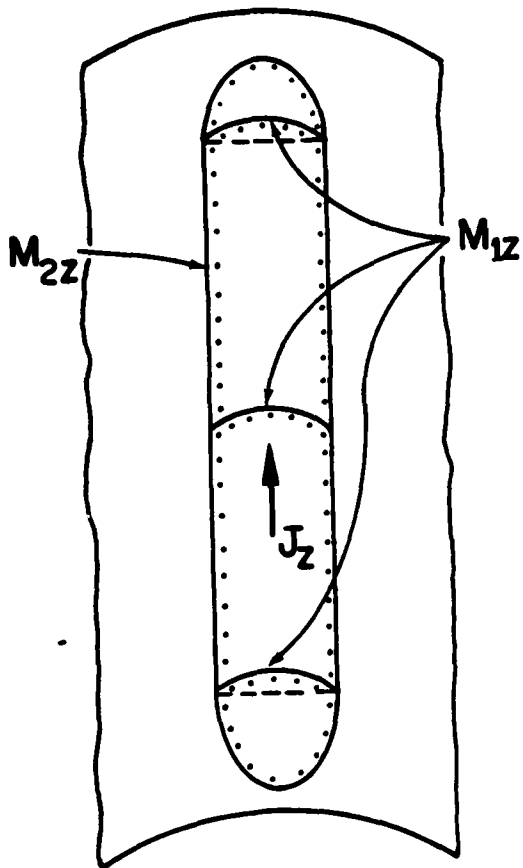
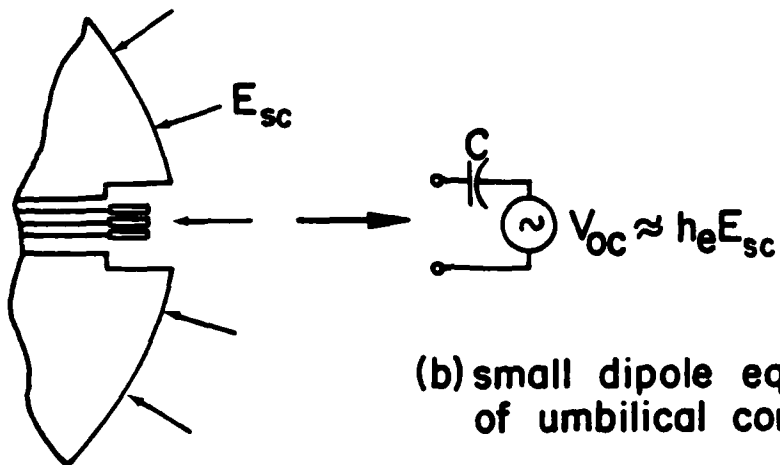


Figure 7. Quasistatic Current and Charge Distributions on Rocket With and Without Plume (Conceptual Representation)

For the rocket vehicle example, the surface charge and current densities on an all-metal vehicle (without plume) will be obtained from cylindrical antenna theory. These surface quantities, the polarizabilities of the raceway cover joints (figure 8a), and the equivalent circuit of the umbilical connector (figure 8b) will constitute the subjects of the external interaction analysis. The polarizability of the raceway cover joints may be obtained from empirical data; the umbilical circuit parameters  $C$  and  $h_e$  of figure 8b can be estimated from the theory of small antennas or obtained from empirical data.



(a) polarizability per unit length of raceway cover joints



(b) small dipole equivalent of umbilical connector pins

Figure 8. External Coupling Parameters for Raceway Cover and Umbilical Connector

SECTION IV  
INTERMEDIATE INTERNAL INTERACTION

The intermediate internal interaction problem is to determine the current induced on the shield of the raceway cable. The analysis will treat the cable and raceway as a leaky coaxial transmission line in which the shield is the raceway and covers, and the center conductor is the raceway cable. This model is illustrated schematically in figure 9 for three vehicle configurations. The leakage through the shield is represented by a distributed longitudinal polarizability per unit length  $M_{2z}$ , representing the longitudinal raceway joints, and discrete polarizabilities  $M_{1z}w$  representing the annular joints between adjacent sections of the raceway cover ( $w$  is the length of the joint;  $M_{1z}$  is the polarizability per unit length).

The joint polarizabilities and the skin current density will be used with transmission line theory to obtain the current induced on the raceway cable. Two solutions, one for the distributed longitudinal joint (figure 10a) and one for the discrete annular joints (figure 10b), will be obtained and superimposed to develop the complete solution for the current along the raceway cable. This analysis will be carried out for one of the configurations shown in figure 9 (probably the single-stage shown at the right). The cable branches in the interstage areas (see figure 1, 2, 3) will be considered electrically short so that they may be replaced by a jumped impedance for the analysis.

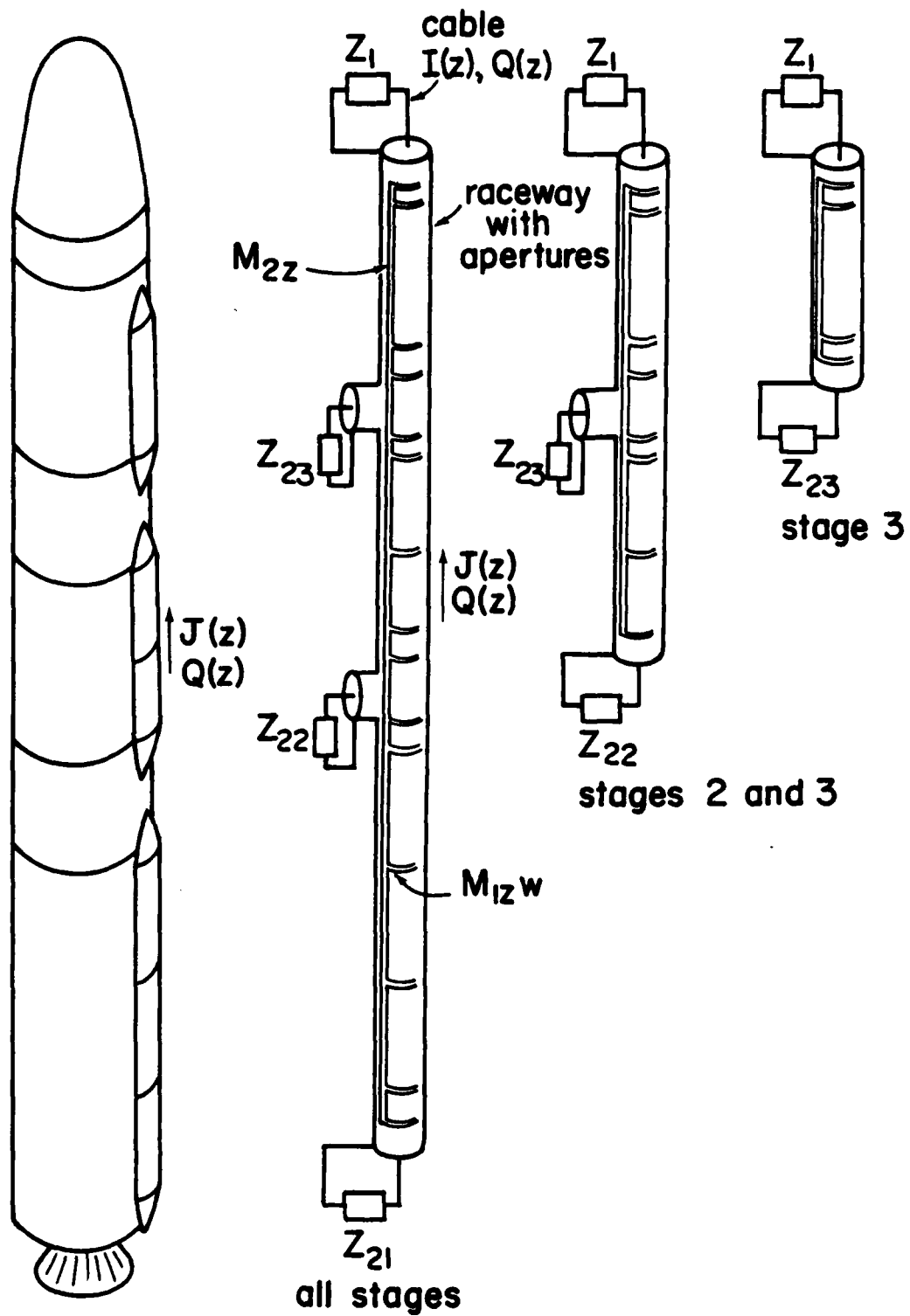
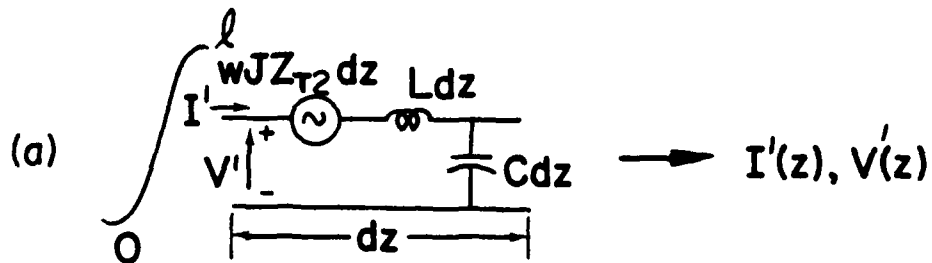
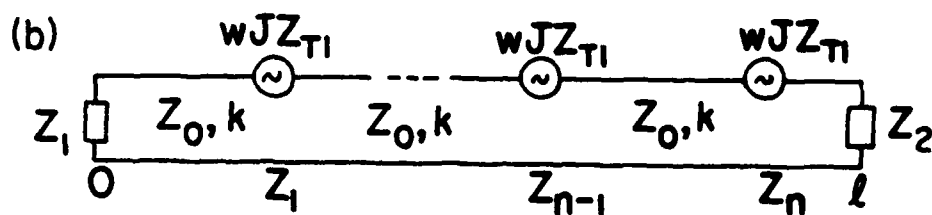


Figure 9. Excitation of Raceway Cable Through Apertures at Cover Joints



$wJ$  = raceway cover current

$Z_{T2}$  = transfer impedance for cover and longitudinal joint (ohms/m)



$$\sum_{i=1}^n \frac{wJZ_{T1}}{2Z_0} e^{\pm jk(z-z_i)} \rightarrow I''(z), \text{ Etc.}$$

$Z_{T1}$  = transfer impedance for annular joint in cover (ohms)

(c)

$$I(z) = I'(z) + I''(z)$$

$$V(z) = V'(z) + V''(z)$$

Figure 10. Determination of Raceway Cable Current From Skin Current and Cover Leakage: (a) Distributed Joint, (b) Discrete Joint, and (c) Superposition to Obtain Total Cable Current Voltage

## SECTION V

### INTERNAL INTERACTION

The internal interaction analysis for the rocket vehicle consists primarily of repeating the transmission line analysis using the raceway cable current and shield transfer characteristics to obtain the voltage and current of the internal conductors of the raceway cable. For the internal conductors, only the current and voltage at the cable-ends (i.e., those delivered to the sensitive components) are of interest. These quantities are induced by distributed diffusion and leakage through the cable shield (figure 11b), and by discrete leakage at the cable connectors (figure 11c). As was proposed in the intermediate internal interaction analysis, these currents and voltages can be obtained by the superposition of a distributed-source solution and a discrete-source solution. The distributed transfer impedance and transfer admittance can be derived analytically for most cable shield configurations. The discrete transfer impedance for connectors will be obtained from empirical data.

Although the raceway cable is a multiconductor cable, to simplify the analysis, it will be treated as a single-conductor cable (with shield), and only the common-mode currents and voltages delivered to lumped termination impedances  $Z_g$  and  $Z_i$  will be determined. As was done for the total cable current, the cable branches will be considered electrically short.

The current and voltage at the lumped impedances  $Z_g$  and  $Z_i$  induced by the interaction of the incident EMP with the rocket vehicle will constitute the final results for this analysis.

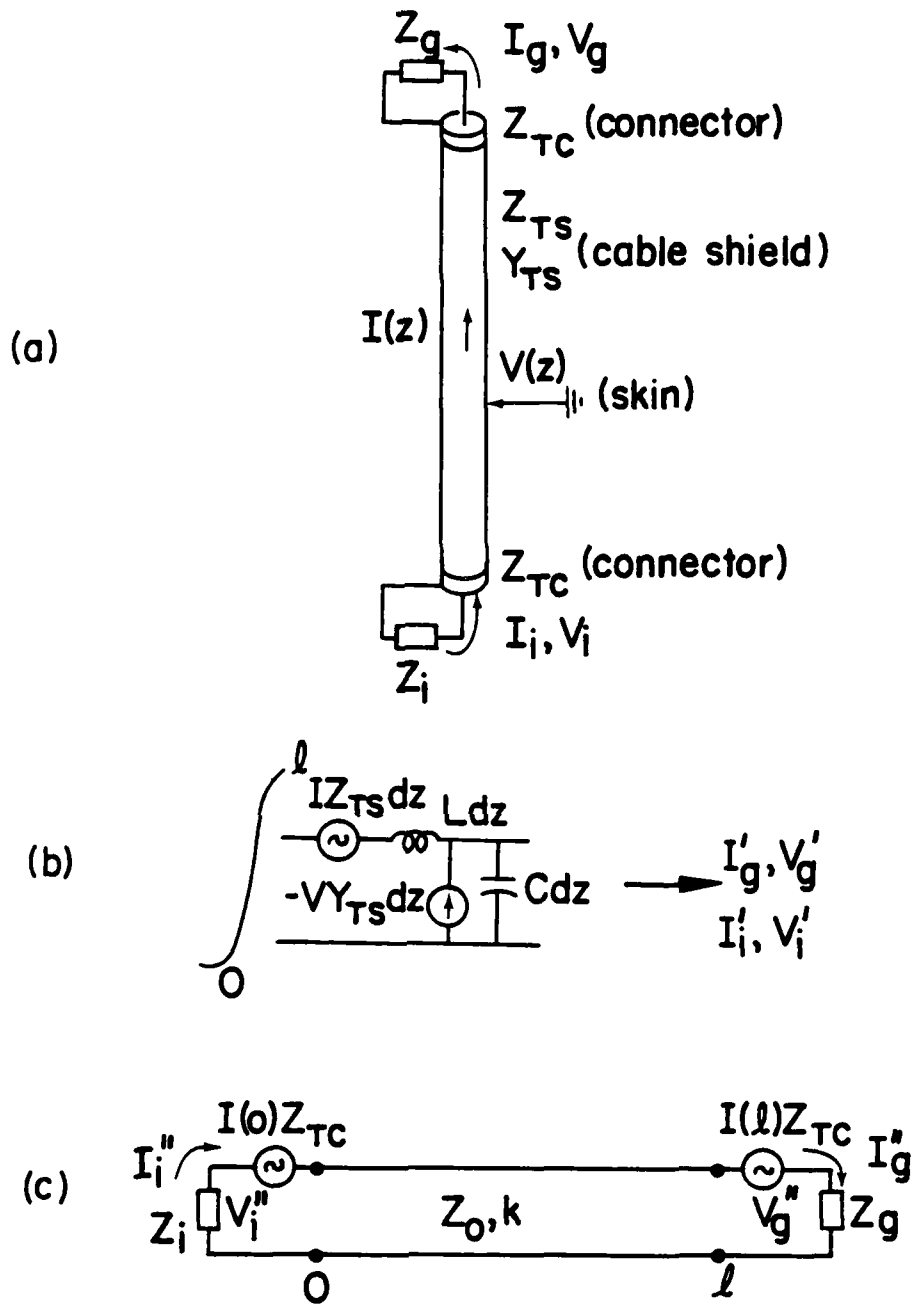


Figure 11. Voltage and Current Delivered to Loads in Guidance System and Interstage Components: (a) Shielded Raceway Cable and Connectors, (b) Voltage and Current From Distributed Coupling (Cable Shield), and (c) Voltage and Current From Discrete Coupling (Connectors)

END

DATE  
FILMED

9-81

DTIC