

AD-A104 928

WORLDWIDE MANPOWER DISTRIBUTION BY GEOGRAPHICAL  
AREA, THIRD QUARTER, FY-81. (U) WASHINGTON  
HEADQUARTERS SERVICE (DOD) DIR FOR INFO OP & RPTS.  
JUN 81. DIOR/MO5-81/03

VII

UNCLASSIFIED

F/G 5/1

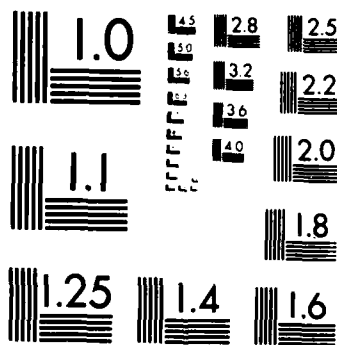
N/L

1 OF 1  
AD-A104 928

END  
FILMED:  
11 04 85

# 1 OF 1

# AD-A104 928



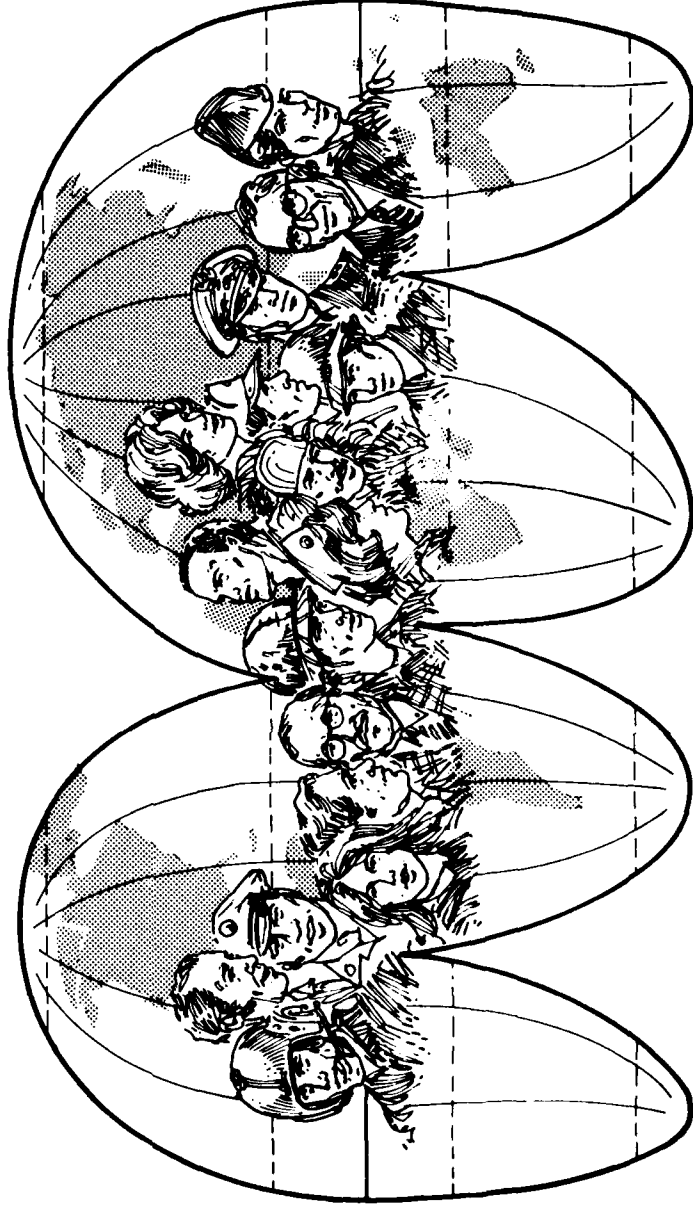
MICROCOPY RESOLUTION TEST CHART  
NATIONAL BUREAU OF STANDARDS-1963 A

THIS REPORT IS UNCLASSIFIED AND  
ITS DISTRIBUTION IS UNLIMITED



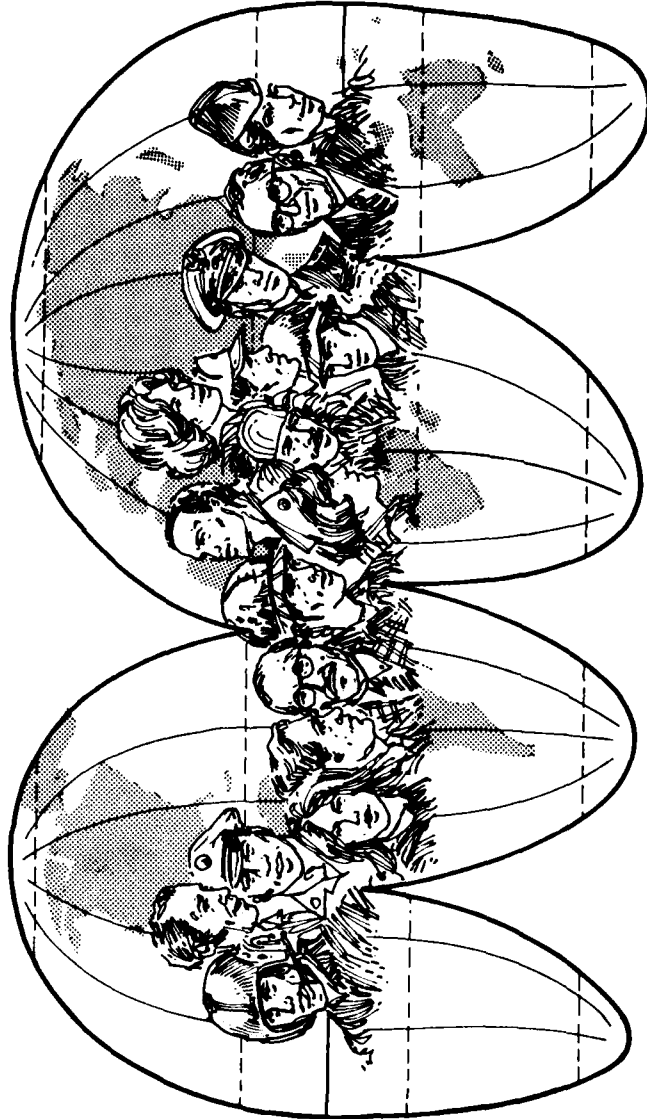
Department of Defense  
**WORLDWIDE MANPOWER DISTRIBUTION**  
**BY GEOGRAPHICAL AREA**

June 30, 1981

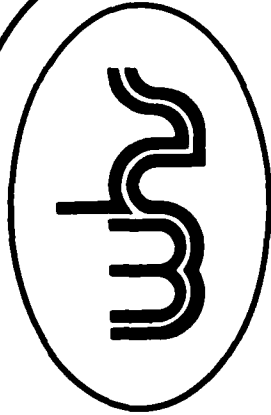




Department of Defense  
**WORLDWIDE MANPOWER DISTRIBUTION**  
 BY GEOGRAPHICAL AREA



OSD WASHINGTON HEADQUARTERS SERVICES



DIRECTORATE FOR INFORMATION  
 OPERATIONS AND REPORTS (DIOR)  
 THE PENTAGON, WASHINGTON, D.C.

FOREWORD

The WORLDWIDE MANPOWER DISTRIBUTION BY GEOGRAPHICAL AREA is a quarterly publication prepared by the Washington Headquarters Services, Directorate for Information Operations and Reports (WHS/DIOR) of the Office of the Secretary of Defense.

This publication reflects the worldwide distribution of Department of Defense active duty military and civilian personnel as of June 30, 1981. Data concerning the dependents of active duty military and U. S. citizen civilian personnel are updated semiannually for the March and September issues of this publication, respectively. Data are shown by country by DoD Component.

This report is approved for public release at cost: distribution unlimited. Requests for this publication, additional copies and/or changes in distribution should be addressed to the Director, Washington Headquarters Services, Room 3E843, The Pentagon, Washington, DC 20301.

T A B L E O F C O N T E N T S

SECTION

- A Active Duty Military Personnel Strengths by Regional Area and by Country
- B Total Civilian Personnel Strengths by Regional Area and by Country - Military Functions
- C \*Table P14 - Summary of Dependents of Military and Civilian Personnel
- \*Table P309C - Dependent Strengths by Regional Area and by Country

\*Prepared semiannually, this table will be updated in March and September.

SECTION A

TABLE P309A

DEPARTMENT OF DEFENSE

ACTIVE DUTY MILITARY PERSONNEL STRENGTHS  
BY REGIONAL AREA AND BY COUNTRY

TABLE P309A

DEPARTMENT OF DEFENSE  
ACTIVE DUTY MILITARY PERSONNEL STRENGTHS BY REGIONAL AREA AND BY COUNTRY

JUNE 30, 1961

REGIONAL AREA/COUNTRY	TOTAL	ARMY	AIR FORCE	NAVY	MARINE CORPS
TOTAL WORLDWIDE	2,070,645	773,806	566,973	541,118	186,748
ASHORE	1,852,472	773,806	566,973	330,388	181,305
AFLOAT	218,173	-	-	210,730	7,443
U.S. TERRITORY AND SPECIAL LOCATIONS	1,579,657	516,656	454,153	454,344	154,504
CONTINENTAL U.S.	1,258,379	458,848	406,989	256,595	135,947
ALASKA	20,211	8,046	10,513	1,447	205
HAWAII	44,315	17,352	6,374	11,120	9,469
AMERICAN SAMOA	1	1	-	-	-
GUAM	9,103	20	3,994	4,727	362
JOHNSTON ATOLL	148	140	3	-	-
MIDWAY ISLANDS	454	-	-	454	-
PUERTO RICO	3,547	369	50	2,948	180
TRUST TERRITORY OF THE PACIFIC ISLANDS	38	38	-	-	-
U.S. MISCELLANEOUS PACIFIC ISLANDS	2	-	-	-	2
VIRGIN ISLANDS OF THE U.S.	9	7	-	2	-
WAKE ISLAND	6	-	6	-	-
TRANSIENTS	88,261	-	26,219	22,010	8,197
AFLOAT	155,163	31,835	-	155,041	142
TOTAL FOREIGN COUNTRIES	490,988	257,150	112,820	86,774	34,244
ASHORE	427,998	257,150	112,820	31,085	26,943
AFLOAT	62,990	-	-	55,689	7,301
(1) WESTERN & SOUTHERN EUROPE	331,377	219,026	78,329	29,656	4,366
AUSTRIA	32	6	5	1	20
BELGIUM*	2,119	1,330	650	109	30
CYPRUS	14	2	1	-	11
DENMARK*	45	6	15	14	10
FINLAND	20	5	3	2	10
FRANCE*	71	19	15	6	31
GERMANY (FED. REPUBLIC & WEST BERLIN)*	246,887	210,618	35,858	293	116
GREECE*	3,310	494	2,395	407	14
GREENLAND*	304	-	304	-	-
ICELAND*	2,858	4	1,073	1,670	111
IRELAND	6	2	2	-	2
ITALY*	12,193	4,024	4,263	3,643	263
LUXEMBOURG*	7	-	-	-	7
MALTA	1	1	-	-	-
NETHERLANDS*	2,431	769	1,640	13	9
NORWAY*	230	38	123	32	37
PORTUGAL*	1,395	71	1,004	311	9
SPAIN	8,786	28	4,937	3,643	178

TABLE P309A

DEPARTMENT OF DEFENSE  
ACTIVE DUTY MILITARY PERSONNEL STRENGTHS BY REGIONAL AREA AND BY COUNTRY

JUNE 30, 1981

REGIONAL AREA/COUNTRY	TOTAL	ARMY	AIR FORCE	NAVY	MARINE CORPS
SWEDEN	17	1	6	4	6
SWITZERLAND	34	4	4	2	24
TURKEY*	5,017	1,146	3,793	61	17
UNITED KINGDOM*	25,266	458	22,238	2,275	295
AFLOAT	20,334	-	-	17,168	3,166
*EUROPEAN NATO	(302,133)	(218,977)	(73,371)	(8,836)	(949)
(2) EAST ASIA & PACIFIC	117,112	30,751	31,756	28,574	26,031
AUSTRALIA	643	22	254	356	11
BURMA	11	3	2	-	6
CHINA	13	4	2	2	5
HONG KONG	38	5	6	13	14
INDONESIA	53	15	13	14	11
JAPAN (INCLUDING OKINAWA)	46,240	2,312	14,108	6,931	22,889
MALAYSIA	17	8	2	-	7
NEW ZEALAND	69	2	11	50	6
NORFOLK ISLAND	1	-	1	-	-
PHILIPPINES	14,552	29	8,422	4,963	1,138
REPUBLIC OF KOREA	37,608	28,298	8,911	302	97
SINGAPORE	24	4	1	11	8
THAILAND	95	49	23	11	12
AFLOAT	17,748	-	-	15,921	1,827
(3) AFRICA, NEAR EAST & SOUTH ASIA	19,647	516	588	18,060	483
AFGHANISTAN	7	2	-	-	5
ALGERIA	2	2	-	-	-
BAHRAIN	64	2	-	62	-
BANGLADESH	10	2	-	-	8
BRITISH INDIAN OCEAN TERRITORY (INCLUDES DIEGO GARCIA)	1,459	-	3	1,456	-
CAMEROON	7	2	-	-	5
CONGO	6	-	-	-	6
EGYPT	179	18	108	30	23
ETHIOPIA	7	-	-	-	7
GABON	7	-	-	-	7
GHANA	10	3	-	-	7
INDIA	40	4	4	5	27
ISRAEL	101	43	24	8	26
IVORY COAST	10	3	-	-	7
JORDAN	26	15	5	-	6
KENYA	31	8	6	-	17
KUWAIT	26	19	1	-	6

TABLE P309A

DEPARTMENT OF DEFENSE  
ACTIVE DUTY MILITARY PERSONNEL STRENGTHS BY REGIONAL AREA AND BY COUNTRY

JUNE 30, 1981

REGIONAL AREA/COUNTRY	TOTAL	ARMY	AIR FORCE	NAVY	MARINE CORPS
LEBANON	17	2	2	1	12
LESOTHO	1	-	-	-	1
LIBERIA	18	7	2	4	5
MADAGASCAR	7	1	-	1	6
MALAWI	2	2	-	-	-
MALI	6	-	-	-	6
MAURITIUS	6	-	-	-	6
MOROCCO	49	9	8	3	29
NEPAL	11	2	-	-	9
NIGER	6	-	-	-	6
NIGERIA	16	7	2	-	7
OMAN	4	1	1	1	1
PAKISTAN	28	5	6	1	16
ST. HELENA (INCLUDES ASCENSION ISLAND)	13	-	13	-	-
SAUDI ARABIA	763	312	382	56	13
SENEGAL	10	-	-	2	8
SEYCHELLES	4	-	4	-	-
SOMALIA	8	2	-	-	6
SOUTH AFRICA	20	3	4	2	11
SRI LANKA	9	-	-	3	6
SUDAN	17	6	2	-	9
SYRIA	13	3	-	-	10
TANZANIA, UNITED REPUBLIC OF	6	-	-	-	6
TUNISIA	24	13	1	1	9
UPPER VOLTA	6	-	-	-	6
YEMEN (SANA)	22	11	5	-	6
ZAIRE	22	8	5	-	9
ZAMBIA	5	-	-	-	5
AFLOAT	16,542	-	-	16,424	118
(4) WESTERN HEMISPHERE	22,108	6,733	2,123	9,971	3,281
ANTIGUA	116	-	1	115	-
ARGENTINA	24	4	6	6	8
BAHAMAS, THE	38	-	2	31	5
BARBADOS	5	-	-	1	4
BERMUDA	1,336	-	-	1,251	85
BOLIVIA	12	5	1	-	6
BRAZIL	220	12	6	6	196
CANADA	645	9	241	382	13
CHILE	16	3	1	1	11
COLOMBIA	25	7	4	2	12

TABLE P309A

DEPARTMENT OF DEFENSE  
ACTIVE DUTY MILITARY PERSONNEL STRENGTHS BY REGIONAL AREA AND BY COUNTRY

JUNE 30, 1981

REGIONAL AREA/COUNTRY	TOTAL	ARMY	AIR FORCE	NAVY	MARINE CORPS
COSTA RICA	10	2	-	-	8
CUBA (GUANTANAMO)	2,128	-	1	1,671	456
DOMINICAN REPUBLIC	20	4	1	4	11
ECUADOR	21	5	4	3	9
EL SALVADOR	53	28	3	-	22
GUATEMALA	16	5	1	-	10
GUYANA	6	-	-	-	6
HAITI	9	2	1	-	6
HONDURAS	19	3	7	1	8
JAMAICA	12	-	-	1	11
MEXICO	26	9	4	2	11
NICARAGUA	10	2	1	-	7
PANAMA	8,891	6,614	1,817	307	153
PARAGUAY	14	3	1	1	9
PERU	23	5	7	3	8
SURINAME	1	1	-	-	-
TURKS AND CAICOS ISLANDS	1	-	1	-	-
URUGUAY	14	4	1	3	6
VENEZUELA	31	6	11	4	10
AFLOAT	8,366	-	-	6,176	2,190
(5) ANTARCTICA	71	-	-	71	-
(6) EASTERN EUROPE	175	67	19	6	83
BULGARIA	10	2	2	-	6
CZECHOSLOVAKIA	10	-	3	-	7
GERMAN DEMOCRATIC REPUBLIC	53	46	-	-	7
HUNGARY	13	3	1	-	9
POLAND	15	3	2	-	10
ROMANIA	15	3	2	-	10
UNION OF SOVIET SOCIALIST REPUBLICS	43	7	5	-	26
YUGOSLAVIA	16	3	4	1	8
(7) UNDISTRIBUTED	498	57	5	436	-

NOTE: ASHORE INCLUDES TEMPORARILY SHORE-BASED.

DEPARTMENT OF DEFENSE  
WASHINGTON HEADQUARTERS SERVICES  
DIRECTORATE FOR INFORMATION  
OPERATIONS AND REPORTS

SECTION B

TABLE P309B

DEPARTMENT OF DEFENSE

TOTAL CIVILIAN PERSONNEL STRENGTHS  
BY REGIONAL AREA AND BY COUNTRY  
MILITARY FUNCTIONS

TABLE P309B

DEPARTMENT OF DEFENSE  
TOTAL CIVILIAN PERSONNEL STRENGTHS BY REGIONAL AREA AND BY COUNTRY  
MILITARY FUNCTIONS - SUMMARY

JUNE 30, 1981

REGIONAL AREA/COUNTRY	TOTAL		TOTAL FOREIGN NATIONALS		U.S. CITIZENS		FOREIGN NATIONALS		FOREIGN NATIONALS	
	DIRECT HIRE	INDIRECT HIRE	DIRECT HIRE	INDIRECT HIRE	DIRECT HIRE	INDIRECT HIRE	DIRECT HIRE	INDIRECT HIRE	DIRECT HIRE	INDIRECT HIRE
TOTAL WORLDWIDE	953,038	114,096	914,994	38,044	914,994	38,044	38,044	76,052		
U.S. TERRITORY AND SPECIAL LOCATIONS	882,685	115	882,574	111	882,574	111	111	4		
CONTINENTAL U.S.	853,325	67	853,258	67	853,258	67	67	-		
ALASKA	3,931	-	3,931	-	3,931	-	-	-		
HAWAII	19,137	-	19,137	-	19,137	-	-	-		
AMERICAN SAMOA	2	-	2	-	2	-	-	-		
GUAM	3,903	40	3,867	36	3,867	36	36	4		
JOHNSTON ATOLL	2	-	2	-	2	-	-	-		
PUERTO RICO	2,243	-	2,243	-	2,243	-	-	-		
TRUST TERRITORY OF THE PACIFIC ISLANDS	60	8	52	8	52	8	8	-		
VIRGIN ISLANDS OF THE U.S.	82	-	82	-	82	-	-	-		
TOTAL FOREIGN COUNTRIES	70,353	113,981	32,420	37,933	32,420	37,933	37,933	76,048		
(1) WESTERN & SOUTHERN EUROPE	29,810	60,872	23,877	5,933	23,877	5,933	5,933	54,939		
AUSTRIA	3	1	2	1	2	1	1	-		
BELGIUM*	329	466	322	7	322	7	7	459		
CYPRUS	2	1	1	1	1	1	1	-		
DENMARK*	18	14	4	14	4	14	14	-		
FINLAND	3	3	-	3	-	3	3	-		
FRANCE*	30	14	16	14	16	14	14	-		
GERMANY (FED. REPUBLIC & WEST BERLIN)*	18,896	49,427	18,870	26	18,870	26	26	49,401		
GREECE*	342	1,358	323	19	323	19	19	1,339		
GREENLAND*	4	-	4	-	4	-	-	-		
ICELAND*	1,072	937	135	937	135	937	937	-		
IRELAND	1	1	-	1	-	1	1	-		
ITALY*	3,588	2,648	941	2,647	941	2,647	2,647	1		
LUXEMBOURG*	8	-	8	-	8	-	-	-		
MALTA	1	1	-	1	-	1	1	-		
NETHERLANDS*	180	340	175	5	175	5	5	335		
NORWAY*	42	36	6	36	6	36	36	-		
PORTUGAL*	1,180	1,000	180	1,000	180	1,000	1,000	-		
SPAIN	866	2,108	848	18	848	18	18	2,090		
SWEDEN	3	2	1	2	1	2	2	-		
SWITZERLAND	3	2	1	2	1	2	2	-		
TURKEY*	620	339	281	339	281	339	339	-		
UNITED KINGDOM*	2,619	2,174	1,759	860	1,759	860	860	1,314		
*EUROPEAN NATO	(28,928)	(58,753)	(23,024)	(5,904)	(23,024)	(5,904)	(5,904)	(52,849)		

TABLE P309B

DEPARTMENT OF DEFENSE  
TOTAL CIVILIAN PERSONNEL STRENGTHS BY REGIONAL AREA AND BY COUNTRY  
MILITARY FUNCTIONS - SUMMARY

JUNE 30, 1981

REGIONAL AREA/COUNTRY	TOTAL DIRECT HIRE	TOTAL FOREIGN NATIONALS	U.S. CITIZENS DIRECT HIRE	FOREIGN NATIONALS		FOREIGN NATIONALS INDIRECT HIRE
				DIRECT HIRE	INDIRECT HIRE	
(2) EAST ASIA & PACIFIC		47,356	5,204	26,247	21,109	
AUSTRALIA	31,451		17			
BURMA	226	209		209		
CHINA	1	1				
HONG KONG	2		2			
INDONESIA	22	19	3	19		
	29	24	5	24		
JAPAN (INCLUDING OKINAWA)		18,057	2,768	21	18,036	
MALAYSIA	2,789		1			
NEW ZEALAND	2	1				
PAPUA NEW GUINEA	11	11		11		
PHILIPPINES	3	3		3		
	14,510	13,600	917	13,593	7	
REPUBLIC OF KOREA		15,386	1,472	12,320	3,066	
SINGAPORE	32	23	9	23		
THAILAND	32	22	10	22		
(3) AFRICA, NEAR EAST & SOUTH ASIA		498	1,060	498		
AFGHANISTAN	1,558					
ALGERIA	2	2		2		
BAHRAIN	1	1		1		
BANGLADESH	32	26	6	26		
BRITISH INDIAN OCEAN TERRITORY (INCLUDES DIEGO GARCIA)	1	1		1		
	7		6	1		
CAMEROON	1					
CHAD	1	1		1		
CONGO	1					
EGYPT	1					
GHANA	232	205	27	205		
INDIA	1	1		1		
ISRAEL	12	10	2	10		
IVORY COAST	144	4	140	4		
JORDAN	2	2		2		
KENYA	13	6	7	6		
	2		2			
KUWAIT	2		2			
LEBANON	3	3		3		
LIBERIA	4	2	2	2		
MADAGASCAR	1	1		1		
MOROCCO	8	6	2	6		

TABLE P309B

DEPARTMENT OF DEFENSE  
TOTAL CIVILIAN PERSONNEL STRENGTHS BY REGIONAL AREA AND BY COUNTRY  
MILITARY FUNCTIONS - SUMMARY

JUNE 30, 1961

REGIONAL AREA/COUNTRY	TOTAL DIRECT HIRE	TOTAL FOREIGN NATIONALS	U.S. CITIZENS DIRECT HIRE	FOREIGN NATIONALS		FOREIGN NATIONALS INDIRECT HIRE
				DIRECT HIRE	INDIRECT HIRE	
NEPAL	2	2	-	-	2	-
NIGERIA	4	3	1	1	3	-
OMAN	7	1	6	1	1	-
PAKISTAN	11	10	1	10	10	-
SAUDI ARABIA	1,035	190	845	190	190	-
SENEGAL	1	1	-	-	1	-
SOMALIA	1	1	-	-	1	-
SOUTH AFRICA	3	1	2	1	1	-
SRI LANKA	1	1	-	-	1	-
SUDAN	3	1	2	1	1	-
SYRIA	2	1	1	1	1	-
TUNISIA	5	4	1	1	4	-
YEMEN (SANA)	7	5	2	5	5	-
ZAIRE	6	4	2	2	4	-
(4) WESTERN HEMISPHERE	7,498	5,230	2,268	5,230	5,230	-
ARGENTINA	13	9	4	9	9	-
BAHAMAS, THE	8	-	8	-	-	-
BERMUDA	402	135	267	135	135	-
BOLIVIA	5	4	1	4	4	-
BRAZIL	15	9	6	9	9	-
CANADA	168	150	18	150	150	-
CHILE	7	4	3	4	4	-
COLOMBIA	18	13	5	13	13	-
COSTA RICA	4	3	1	3	3	-
CUBA (GUANTANAMO)	852	613	239	613	613	-
DOMINICAN REPUBLIC	6	5	1	5	5	-
ECUADOR	11	6	5	6	6	-
EL SALVADOR	6	5	1	5	5	-
GUATEMALA	6	5	1	5	5	-
HAITI	1	1	-	1	1	-
HONDURAS	8	5	3	5	5	-
JAMAICA	1	1	-	1	1	-
MEXICO	4	4	-	4	4	-
NICARAGUA	6	4	2	4	4	-
PANAMA	5,917	4,224	1,693	4,224	4,224	-
PARAGUAY	8	7	1	7	7	-
PERU	11	8	3	8	8	-

TABLE P309B

DEPARTMENT OF DEFENSE  
 TOTAL CIVILIAN PERSONNEL STRENGTHS BY REGIONAL AREA AND BY COUNTRY  
 MILITARY FUNCTIONS - SUMMARY

JUNE 30, 1981

REGIONAL AREA/COUNTRY	TOTAL DIRECT HIRE	TOTAL FOREIGN NATIONALS	U.S. CITIZENS DIRECT HIRE	FOREIGN NATIONALS	
				DIRECT HIRE	INDIRECT HIRE
URUGUAY	6	5	1	5	-
VENEZUELA	15	10	5	10	-
(5) ANTARCTICA	-	-	-	-	-
(6) EASTERN EUROPE	36	25	11	25	-
BULGARIA	3	2	1	2	-
CZECHOSLOVAKIA	3	2	1	2	-
HUNGARY	3	2	1	2	-
POLAND	5	3	2	3	-
ROMANIA	4	3	1	3	-
UNION OF SOVIET SOCIALIST REPUBLICS	13	10	3	10	-
YUGOSLAVIA	5	3	2	3	-
(7) UNDISTRIBUTED	-	-	-	-	-

NOTE: EXCLUDES SPECIAL EMPLOYMENT CATEGORIES FOR STUDENTS  
 AND DISADVANTAGED YOUTH.

TABLE P309B

DEPARTMENT OF DEFENSE  
ARMY CIVILIAN PERSONNEL STRENGTHS BY REGIONAL AREA AND BY COUNTRY  
MILITARY FUNCTIONS

JUNE 30, 1981

REGIONAL AREA/COUNTRY	TOTAL		TOTAL FOREIGN NATIONALS		U.S. CITIZENS		FOREIGN NATIONALS		FOREIGN NATIONALS	
	DIRECT HIRE	INDIRECT HIRE	DIRECT HIRE	INDIRECT HIRE	DIRECT HIRE	INDIRECT HIRE	DIRECT HIRE	INDIRECT HIRE	DIRECT HIRE	INDIRECT HIRE
TOTAL WORLDWIDE	323,336		65,950		307,578		15,758		50,192	
U.S. TERRITORY AND SPECIAL LOCATIONS										
CONTINENTAL U.S.	287,925		-		287,925		-		-	
ALASKA	280,450		-		280,450		-		-	
HAWAII	2,338		-		2,338		-		-	
AMERICAN SAMOA	4,099		-		4,099		-		-	
GUAM	2		-		2		-		-	
	6		-		6		-		-	
JOHNSTON ATOLL	2		-		2		-		-	
PUERTO RICO	906		-		906		-		-	
TRUST TERRITORY OF THE PACIFIC ISLANDS	41		-		41		-		-	
VIRGIN ISLANDS OF THE U.S.	81		-		81		-		-	
TOTAL FOREIGN COUNTRIES	35,411		65,950		19,653		15,758		50,192	
(1) WESTERN & SOUTHERN EUROPE	16,911		45,133		15,382		1,529		43,604	
BELGIUM*	251		447		247		4		443	
DENMARK*	3		2		1		2		-	
FRANCE*	12		6		6		6		-	
GERMANY (FED. REPUBLIC & WEST BERLIN)*	14,777		42,914		14,759		18		42,896	
GREECE*	22		28		9		13		15	
ITALY*	1,196		963		233		963		-	
LUXEMBOURG*	7		-		7		-		-	
NETHERLANDS*	60		252		58		2		250	
NORWAY*	2		2		-		2		-	
PORTUGAL*	12		9		3		9		-	
SPAIN	23		14		9		14		-	
TURKEY*	10		-		10		-		-	
UNITED KINGDOM*	536		496		40		496		-	
*EUROPEAN NATO	(16,888)		(45,119)		(15,373)		(1,515)		(43,604)	
(2) EAST ASIA & PACIFIC	12,730		17,112		2,206		10,524		6,588	
JAPAN (INCLUDING OKINAWA)	942		3,530		934		8		3,522	
MALAYSIA	1		-		1		-		-	
REPUBLIC OF KOREA	11,786		13,582		1,270		10,516		3,066	
THAILAND	1		-		1		-		-	
(3) AFRICA, NEAR EAST & SOUTH ASIA	1,138		214		924		214		-	
EGYPT	10		4		6		4		-	
ISRAEL	128		-		128		-		-	

TABLE P309B

DEPARTMENT OF DEFENSE  
ARMY CIVILIAN PERSONNEL STRENGTHS BY REGIONAL AREA AND BY COUNTRY  
MILITARY FUNCTIONS

JUNE 30, 1981

REGIONAL AREA/COUNTRY	TOTAL DIRECT HIRE	TOTAL FOREIGN NATIONALS	U.S. CITIZENS DIRECT HIRE	FOREIGN NATIONALS		FOREIGN NATIONALS INDIRECT HIRE
				DIRECT HIRE	INDIRECT HIRE	
JORDAN	10	4	6	4	-	-
KENYA	2	-	2	-	-	-
LEBANON	1	1	-	1	-	-
LIBERIA	2	1	1	1	-	-
MOROCCO	5	4	1	4	-	-
NIGERIA	1	1	-	1	-	-
OMAN	6	-	6	-	-	-
SAUDI ARABIA	960	188	772	188	-	-
SUDAN	1	1	-	1	-	-
TUNISIA	4	3	1	3	-	-
YEMEN (SANA)	4	4	-	4	-	-
ZAIRE	4	3	1	3	-	-
(4) WESTERN HEMISPHERE	4,632	3,491	1,141	3,491	-	-
ARGENTINA	7	6	1	6	-	-
BRAZIL	5	3	2	3	-	-
CANADA	2	2	-	2	-	-
COLOMBIA	11	8	3	8	-	-
COSTA RICA	3	3	-	3	-	-
DOMINICAN REPUBLIC	3	3	-	3	-	-
ECUADOR	5	4	1	4	-	-
EL SALVADOR	4	3	1	3	-	-
GUATEMALA	3	3	-	3	-	-
HONDURAS	6	4	2	4	-	-
NICARAGUA	2	2	-	2	-	-
PANAMA	4,563	3,434	1,129	3,434	-	-
PARAGUAY	4	4	-	4	-	-
PERU	4	4	-	4	-	-
URUGUAY	3	3	-	3	-	-
VENEZUELA	7	5	2	5	-	-
(5) ANTARCTICA	-	-	-	-	-	-
(6) EASTERN EUROPE	-	-	-	-	-	-
(7) UNDISTRIBUTED	-	-	-	-	-	-

NOTE: EXCLUDES SPECIAL EMPLOYMENT CATEGORIES FOR STUDENTS  
AND DISADVANTAGED YOUTH.

TABLE P309B

DEPARTMENT OF DEFENSE  
AIR FORCE CIVILIAN PERSONNEL STRENGTHS BY REGIONAL AREA AND BY COUNTRY  
MILITARY FUNCTIONS

JUNE 30, 1981

REGIONAL AREA/COUNTRY	TOTAL	TOTAL	TOTAL	U.S.		FOREIGN		FOREIGN
	DIRECT HIRE	FOREIGN NATIONALS	FOREIGN NATIONALS	DIRECT HIRE	INDIRECT HIRE	DIRECT HIRE	INDIRECT HIRE	NATIONALS
TOTAL WORLDWIDE	237,755	20,113	230,954	230,954	-	6,801	-	13,312
U.S. TERRITORY AND SPECIAL LOCATIONS	223,473	-	223,473	223,473	-	-	-	-
CONTINENTAL U.S.	218,534	-	218,534	218,534	-	-	-	-
ALASKA	1,389	-	1,389	1,389	-	-	-	-
HAWAII	2,633	-	2,633	2,633	-	-	-	-
GUAM	647	-	647	647	-	-	-	-
PUERTO RICO	270	-	270	270	-	-	-	-
TOTAL FOREIGN COUNTRIES	14,282	20,113	7,481	7,481	13,312	6,801	13,312	6,801
(1) WESTERN & SOUTHERN EUROPE	8,109	10,598	6,023	6,023	8,512	2,086	8,512	2,086
BELGIUM*	21	-	21	21	-	-	-	-
DENMARK*	7	5	2	2	5	-	-	-
FRANCE*	4	-	4	4	-	-	-	-
GERMANY (FED. REPUBLIC & WEST BERLIN)*	3,035	6,009	3,035	3,035	6,007	2	6,007	2
GREECE*	179	427	179	179	427	-	427	-
GREENLAND*	4	-	4	4	-	-	-	-
ICELAND*	78	57	21	21	57	-	57	-
ITALY*	894	617	277	277	617	-	617	-
NETHERLANDS*	100	71	100	100	71	-	71	-
NORWAY*	35	32	3	3	32	-	32	-
PORTUGAL*	1,099	940	159	159	940	-	940	-
SPAIN	579	863	579	579	863	-	863	-
TURKEY*	561	308	253	253	308	-	308	-
UNITED KINGDOM*	1,513	1,269	1,388	1,388	1,269	-	1,269	-
*EUROPEAN NATO	(7,530)	(9,735)	(5,444)	(5,444)	(2,086)	-	(2,086)	-
(2) EAST ASIA & PACIFIC	5,367	8,977	1,190	1,190	4,177	-	4,177	-
AUSTRALIA	1	-	1	1	-	-	-	-
HONG KONG	2	-	2	2	-	-	-	-
JAPAN (INCLUDING OKINAWA)	710	4,806	704	704	6	-	6	-
PHILIPPINES	2,935	2,574	361	361	2,574	-	2,574	-
REPUBLIC OF KOREA	1,718	1,597	121	121	1,597	-	1,597	-
THAILAND	1	-	1	1	-	-	-	-
(3) AFRICA, NEAR EAST & SOUTH ASIA	65	-	65	65	-	-	-	-
CONGO	1	-	1	1	-	-	-	-
EGYPT	18	-	18	18	-	-	-	-
ISRAEL	3	-	3	3	-	-	-	-
MOROCCO	1	-	1	1	-	-	-	-

TABLE P309B

DEPARTMENT OF DEFENSE  
 AIR FORCE CIVILIAN PERSONNEL STRENGTHS BY REGIONAL AREA AND BY COUNTRY  
 MILITARY FUNCTIONS

JUNE 30, 1981

REGIONAL AREA/COUNTRY	TOTAL DIRECT HIRE	TOTAL FOREIGN NATIONALS	U. S. CITIZENS DIRECT HIRE	FOREIGN NATIONALS		FOREIGN NATIONALS	
				DIRECT HIRE	INDIRECT HIRE	DIRECT HIRE	INDIRECT HIRE
SAUDI ARABIA	38	-	38	-	-	-	-
SUDAN	1	-	1	-	-	-	-
YEMEN (SANA)	2	-	2	-	-	-	-
ZAIRE	1	-	1	-	-	-	-
(4) WESTERN HEMISPHERE	741	538	203	538	-	538	-
CANADA	4	-	4	-	-	-	-
PANAMA	737	538	199	538	-	538	-
(5) ANTARCTICA	-	-	-	-	-	-	-
(6) EASTERN EUROPE	-	-	-	-	-	-	-
(7) UNDISTRIBUTED	-	-	-	-	-	-	-

NOTE: EXCLUDES SPECIAL EMPLOYMENT CATEGORIES FOR STUDENTS  
 AND DISADVANTAGED YOUTH.

TABLE P309B

DEPARTMENT OF DEFENSE  
NAVY CIVILIAN PERSONNEL STRENGTHS BY REGIONAL AREA AND BY COUNTRY  
MILITARY FUNCTIONS

JUNE 30, 1981

REGIONAL AREA/COUNTRY	TOTAL DIRECT HIRE	TOTAL FOREIGN NATIONALS	U.S.		FOREIGN		FOREIGN NATIONALS INDIRECT HIRE
			CITIZENS DIRECT HIRE	DIRECT HIRE	NATIONALS DIRECT HIRE		
TOTAL WORLDWIDE	320,255	25,678	305,398	14,857	10,821		
U.S. TERRITORY AND SPECIAL LOCATIONS							
CONTINENTAL U.S.	302,729	113	302,620	109	4		
ALASKA	286,059	65	285,994	65	-		
HAWAII	158	-	158	-	-		
GUAM	12,212	-	12,212	-	-		
PUERTO RICO	3,232	40	3,196	36	4		
	1,050	-	1,050	-	-		
TRUST TERRITORY OF THE PACIFIC ISLANDS	17	8	9	8	-		
VIRGIN ISLANDS OF THE U.S.	1	-	1	-	-		
TOTAL FOREIGN COUNTRIES	17,526	25,565	2,778	14,748	10,817		
(1) WESTERN & SOUTHERN EUROPE	2,955	3,479	830	2,125	1,354		
GERMANY (FED. REPUBLIC & WEST BERLIN)*	11	30	11	-	30		
GREECE*	18	115	18	-	115		
ICELAND*	981	878	103	878	-		
ITALY*	1,335	974	362	973	1		
PORTUGAL*	50	43	7	43	-		
SPAIN	187	1,140	187	-	1,140		
UNITED KINGDOM*	373	299	142	231	68		
*EUROPEAN NATO	(2,768)	(2,339)	(643)	(2,125)	(214)		
(2) EAST ASIA & PACIFIC	12,687	20,798	1,352	11,335	9,463		
AUSTRALIA	222	207	15	207	-		
HONG KONG	11	10	1	10	-		
INDONESIA	23	19	4	19	-		
JAPAN (INCLUDING OKINAWA)	802	9,458	801	1	9,457		
NEW ZEALAND	10	10	-	10	-		
PAPUA NEW GUINEA	3	3	-	3	-		
PHILIPPINES	11,382	10,918	470	10,912	6		
REPUBLIC OF KOREA	186	139	47	139	-		
SINGAPORE	27	19	8	19	-		
THAILAND	21	15	6	15	-		
(3) AFRICA, NEAR EAST & SOUTH ASIA	268	235	33	235	-		
BAHRAIN	30	26	4	26	-		
BRITISH INDIAN OCEAN TERRITORY (INCLUDES DIEGO GARCIA)	7	1	6	1	-		
EGYPT	197	196	1	196	-		

TABLE P309B

DEPARTMENT OF DEFENSE  
NAVY CIVILIAN PERSONNEL STRENGTHS BY REGIONAL AREA AND BY COUNTRY  
MILITARY FUNCTIONS

JUNE 30, 1981

REGIONAL AREA/COUNTRY	TOTAL DIRECT HIRE	TOTAL FOREIGN NATIONALS	U.S. CITIZENS DIRECT HIRE	FOREIGN NATIONALS		FOREIGN NATIONALS	
				DIRECT HIRE	INDIRECT HIRE	DIRECT HIRE	INDIRECT HIRE
INDIA	6	5	1				
KUWAIT	2	-	2				5
PAKISTAN	8	7	1				7
SAUDI ARABIA	18	-	18				-
(4) WESTERN HEMISPHERE	1,616	1,053	563			1,053	
BAHAMAS, THE	8	-	8				
BERMUDA	391	134	257			134	
CANADA	118	118	-			118	
CUBA (GUANTANAMO)	841	611	230			611	
NICARAGUA	2	1	1			1	
PANAMA	256	189	67			189	
(5) ANTARCTICA	-	-	-				
(6) EASTERN EUROPE	-	-	-				
(7) UNDISTRIBUTED	-	-	-				

NOTE: EXCLUDES SPECIAL EMPLOYMENT CATEGORIES FOR STUDENTS  
AND DISADVANTAGED YOUTH.

TABLE P309B

DEPARTMENT OF DEFENSE  
OSD-JCS AND OTHER DEFENSE ACTIVITIES  
CIVILIAN PERSONNEL STRENGTHS BY REGIONAL AREA AND BY COUNTRY  
MILITARY FUNCTIONS

JUNE 30, 1981

REGIONAL AREA/COUNTRY	TOTAL	TOTAL FOREIGN NATIONALS		U. S. CITIZENS		FOREIGN NATIONALS		FOREIGN NATIONALS	
	DIRECT HIRE	INDIRECT HIRE	DIRECT HIRE	INDIRECT HIRE	DIRECT HIRE	INDIRECT HIRE	DIRECT HIRE	INDIRECT HIRE	
TOTAL WORLDWIDE	71,692	2,355	71,064	628	1,727				
U. S. TERRITORY AND SPECIAL LOCATIONS									
CONTINENTAL U. S.	68,558	2	68,556	2	-				
ALASKA	68,282	2	68,280	2	-				
HAWAII	46	-	46	-	-				
GUAM	193	-	193	-	-				
PUERTO RICO	18	-	18	-	-				
TRUST TERRITORY OF THE PACIFIC ISLANDS	17	-	17	-	-				
	2	-	2	-	-				
TOTAL FOREIGN COUNTRIES	3,134	2,353	2,508	626	1,727				
(1) WESTERN & SOUTHERN EUROPE	1,835	1,662	1,642	193	1,469				
AUSTRIA	3	1	2	1	-				
BELGIUM*	57	19	54	3	16				
CYPRUS	2	1	1	1	-				
DENMARK*	8	7	1	7	-				
FINLAND	3	3	-	3	-				
FRANCE*	14	8	6	8	-				
GERMANY (FED. REPUBLIC & WEST BERLIN)*	1,073	474	1,067	6	468				
GREECE*	123	788	117	6	782				
ICELAND*	13	2	11	2	-				
IRELAND	1	1	-	1	-				
ITALY*	163	94	69	94	-				
LUXEMBOURG*	1	-	1	-	-				
MALTA	1	1	-	1	-				
NETHERLANDS*	20	17	17	3	14				
NORWAY*	5	2	3	2	-				
PORTUGAL*	19	8	11	8	-				
SPAIN	77	91	73	4	87				
SWEDEN	3	2	1	2	-				
SWITZERLAND	3	2	1	2	-				
TURKEY*	49	31	18	31	-				
UNITED KINGDOM*	197	110	189	8	102				
*EUROPEAN NATO	(1,742)	(1,560)	(1,564)	(178)	(1,382)				
(2) EAST ASIA & PACIFIC	667	469	456	211	258				
AUSTRALIA	3	2	1	2	-				
BURMA	1	1	-	1	-				
CHINA	2	-	2	-	-				

TABLE P309B

DEPARTMENT OF DEFENSE  
 OSD-JCS AND OTHER DEFENSE ACTIVITIES  
 CIVILIAN PERSONNEL STRENGTHS BY REGIONAL AREA AND BY COUNTRY  
 MILITARY FUNCTIONS

JUNE 30, 1981

REGIONAL AREA/COUNTRY	TOTAL DIRECT HIRE	TOTAL FOREIGN NATIONALS	U.S. CITIZENS DIRECT HIRE	FOREIGN NATIONALS		FOREIGN NATIONALS INDIRECT HIRE
				DIRECT HIRE	INDIRECT HIRE	
HONG KONG	9	9	-	9	-	-
INDONESIA	6	5	1	5	-	-
JAPAN (INCLUDING OKINAWA)	335	263	329	6	-	257
MALAYSIA	1	1	-	1	-	-
NEW ZEALAND	1	1	-	1	-	-
PHILIPPINES	193	108	86	107	-	1
REPUBLIC OF KOREA	102	68	34	68	-	-
SINGAPORE	5	4	1	4	-	-
THAILAND	9	7	2	7	-	-
(3) AFRICA, NEAR EAST & SOUTH ASIA	87	49	38	49	-	-
AFGHANISTAN	2	2	-	2	-	-
ALGERIA	1	1	-	1	-	-
BAHRAIN	2	-	2	-	-	-
BANGLADESH	1	1	-	1	-	-
CAMEROON	1	1	-	1	-	-
CHAD	1	1	-	1	-	-
EGYPT	7	5	2	5	-	-
GHANA	1	1	-	1	-	-
INDIA	6	5	1	5	-	-
ISRAEL	13	4	9	4	-	-
IVORY COAST	2	2	-	2	-	-
JORDAN	3	2	1	2	-	-
LEBANON	2	2	-	2	-	-
LIBERIA	2	1	1	1	-	-
MADAGASCAR	1	1	-	1	-	-
MOROCCO	2	2	-	2	-	-
NEPAL	2	2	-	2	-	-
NIGERIA	3	2	1	2	-	-
OMAN	1	1	-	1	-	-
PAKISTAN	3	3	-	3	-	-
SAUDI ARABIA	19	2	17	2	-	-
SENEGAL	1	1	-	1	-	-
SOMALIA	1	1	-	1	-	-
SOUTH AFRICA	3	1	2	1	-	-
SRI LANKA	1	1	-	1	-	-
SUDAN	1	-	1	-	-	-
SYRIA	2	1	-	1	-	-

TABLE P309B

DEPARTMENT OF DEFENSE  
OSD-JCS AND OTHER DEFENSE ACTIVITIES  
CIVILIAN PERSONNEL STRENGTHS BY REGIONAL AREA AND BY COUNTRY  
MILITARY FUNCTIONS

JUNE 30, 1981

REGIONAL AREA/COUNTRY	TOTAL DIRECT HIRE	TOTAL FOREIGN NATIONALS	U.S. CITIZENS		FOREIGN NATIONALS		FOREIGN NATIONALS	
			DIRECT HIRE	INDIRECT HIRE	DIRECT HIRE	INDIRECT HIRE	DIRECT HIRE	INDIRECT HIRE
TUNISIA	1	1	-	-	-	-	-	-
YEMEN (SANA)	1	1	-	-	-	-	-	-
ZAIRE	1	1	-	-	-	-	-	-
(4) WESTERN HEMISPHERE	509	148	361	-	148	-	-	-
ARGENTINA	6	3	3	-	3	-	-	-
BERMUDA	11	1	10	-	1	-	-	-
BOLIVIA	5	4	1	-	4	-	-	-
BRAZIL	10	6	4	-	6	-	-	-
CANADA	44	30	14	-	30	-	-	-
CHILE	7	4	3	-	4	-	-	-
COLOMBIA	7	5	2	-	5	-	-	-
COSTA RICA	1	-	1	-	-	-	-	-
CUBA (GUANTANAMO)	11	2	9	-	2	-	-	-
DOMINICAN REPUBLIC	3	2	1	-	2	-	-	-
ECUADOR	6	2	4	-	2	-	-	-
EL SALVADOR	2	2	-	-	2	-	-	-
GUATEMALA	3	2	1	-	2	-	-	-
HAITI	1	1	-	-	1	-	-	-
HONDURAS	2	1	1	-	1	-	-	-
JAMAICA	1	1	-	-	1	-	-	-
MEXICO	4	4	-	-	4	-	-	-
NICARAGUA	2	1	1	-	1	-	-	-
PANAMA	361	63	298	-	63	-	-	-
PARAGUAY	4	3	1	-	3	-	-	-
PERU	7	4	3	-	4	-	-	-
URUGUAY	3	2	1	-	2	-	-	-
VENEZUELA	8	5	3	-	5	-	-	-
(7) ANTARCTICA	-	-	-	-	-	-	-	-
(6) EASTERN EUROPE	36	25	11	-	25	-	-	-
BULGARIA	3	2	1	-	2	-	-	-
CZECHOSLOVAKIA	3	2	1	-	2	-	-	-
HUNGARY	3	2	1	-	2	-	-	-
POLAND	5	3	2	-	3	-	-	-
ROMANIA	4	3	1	-	3	-	-	-

TABLE P309B

DEPARTMENT OF DEFENSE  
 OSD-JCS AND OTHER DEFENSE ACTIVITIES  
 CIVILIAN PERSONNEL STRENGTHS BY REGIONAL AREA AND BY COUNTRY  
 MILITARY FUNCTIONS

JUNE 30, 1981

REGIONAL AREA/COUNTRY	TOTAL DIRECT HIRE	TOTAL FOREIGN NATIONALS		U.S. CITIZENS		FOREIGN NATIONALS		FOREIGN NATIONALS	
		FOREIGN NATIONALS	NATIONALS	DIRECT HIRE	INDIRECT HIRE	DIRECT HIRE	INDIRECT HIRE	DIRECT HIRE	INDIRECT HIRE
UNION OF SOVIET SOCIALIST REPUBLICS	13	10	3	3	-	10	-	-	-
YUGOSLAVIA	5	3	2	2	-	3	-	-	-
(7) UNDISTRIBUTED	-	-	-	-	-	-	-	-	-

(7) UNDISTRIBUTED

NOTE: EXCLUDES SPECIAL EMPLOYMENT CATEGORIES FOR STUDENTS AND DISADVANTAGED YOUTH.

DEPARTMENT OF DEFENSE  
 WASHINGTON HEADQUARTERS SERVICES  
 DIRECTORATE FOR INFORMATION  
 OPERATIONS AND REPORTS

SECTION C

DEPARTMENT OF DEFENSE  
DEPENDENTS OF  
MILITARY AND CIVILIAN PERSONNEL

TABLE P14

DEPARTMENT OF DEFENSE  
SUMMARY OF DEPENDENTS OF MILITARY & CIVILIAN PERSONNEL

MARCH 31, 1981

A. TYPE OF DEPENDENTS OF ACTIVE DUTY MILITARY PERSONNEL

DEPENDENT RELATIONSHIP	TOTAL DEPARTMENT OF DEFENSE			
	ARMY	NAVY	MARINE CORPS	AIR FORCE
TOTAL DEPENDENTS	1,319,407	551,875	158,119	830,138
SPOUSES	458,362	234,405	65,596	347,801
CHILDREN	730,424	313,475	92,054	479,678
PARENTS	84,310	2,627	469	2,659
ALL OTHER	46,311	1,368	-	-

B. LOCATION OF DEPENDENTS OF ACTIVE DUTY MILITARY PERSONNEL

LOCATION	TOTAL DEPARTMENT OF DEFENSE			
	ARMY	NAVY	MARINE CORPS	AIR FORCE
WORLDWIDE	1,319,407	551,875	158,119	830,138
CONTINENTAL U.S.	1,105,687	489,834	140,369	676,106
ALASKA	8,155	1,390	104	12,491
HAWAII	15,452	18,103	9,361	9,712
U.S. TERRITORIES	1,157	8,490	581	5,220
FOREIGN COUNTRIES	188,956	34,058	7,704	126,609

TABLE P14 (concluded)

DEPARTMENT OF DEFENSE  
 SUMMARY OF DEPENDENTS OF MILITARY & CIVILIAN PERSONNEL - MARCH 31, 1981  
 C. DEPENDENTS OF U.S. CITIZENS CIVILIAN EMPLOYEES A/

LOCATION	TOTAL DEPARTMENT OF DEFENSE	ARMY	NAVY	AIR FORCE	OSD-JCS & OTHER DEFENSE ACTIVITIES
ALL LOCATIONS BELOW	22,917	13,203	3,177	5,616	921
ALASKA	1,353	819*	180	340	14
HAWAII	606	255	121	177	53
U.S. TERRITORIES	722	53*	466	150	53
FOREIGN COUNTRIES	20,236	12,076	2,410	4,949	801

A/ FOR ALASKA, HAWAII, AND U.S. TERRITORIES, EXCLUDED ARE DEPENDENTS OF CITIZENS WHO ARE EMPLOYED IN THE STATE OR TERRITORY OF THEIR PERMANENT RESIDENCE.

\* SEPTEMBER 30, 1980 DATA.

TABLE P309C

DEPARTMENT OF DEFENSE  
DEPENDENT STRENGTHS BY REGIONAL AREA AND BY COUNTRY

MARCH 31, 1981

REGIONAL AREA/COUNTRY	TOTAL DEPENDENTS OF MILITARY AND CIVILIAN EMPLOYEES						OSD AND DEFENSE AGENCIES
	TOTAL	ARMY	AIR FORCE	NAVY	MARINE CORPS		
TOTAL WORLDWIDE	2,882,456	1,332,610	835,754	555,052	158,119		921
U.S. TERRITORY AND SPECIAL LOCATIONS							
CONTINENTAL U.S.	2,504,893	1,131,578	704,196	518,584	150,415		120
ALASKA	2,411,996	1,105,687	676,106	489,834	140,369		-
HAWAII	23,493	8,974	12,831	1,570	104		14
AMERICAN SAMOA	53,234	15,707	9,889	18,224	9,361		53
GUAM	22	4	-	6	12		-
MIDWAY ISLANDS	12,448	21	5,270	6,805	310		42
PUERTO RICO	-	-	-	-	-		-
TRUST TERRITORY OF THE PACIFIC ISLANDS	3,676	1,185	100	2,131	256		4
VIRGIN ISLANDS OF THE U.S.	17	-	-	-	-		7
TOTAL FOREIGN COUNTRIES	377,563	201,032	131,558	36,468	7,704		801
(1) WESTERN & SOUTHERN EUROPE							
AUSTRIA	293,580	182,124	96,021	13,910	1,076		449
BELGIUM*	29	10	8	3	-		8
CYPRUS	3,877	2,379	1,230	147	37		84
DENMARK*	4	4	-	-	-		-
FINLAND	63	9	33	8	13		-
	36	12	3	5	4		12
FRANCE*	87	17	33	20	12		5
GERMANY (FED. REPUBLIC & WEST BERLIN)*	213,343	167,921	44,572	419	136		295
GREECE*	3,448	484	2,627	322	10		5
ICELAND*	1,809	-	403	1,365	41		-
IRELAND	11	5	-	-	6		-
ITALY*	15,009	4,776	5,096	4,965	152		20
LUXEMBOURG*	8	-	-	-	5		3
MALTA	-	-	-	-	-		-
NETHERLANDS*	3,302	892	2,356	30	18		6
NORWAY*	364	54	222	54	34		-
PORTUGAL*							
SPAIN	1,949	25	1,539	385	-		-
SWEDEN	10,453	49	7,447	2,755	202		-
SWITZERLAND	37	3	14	8	12		-
TURKEY*	19	1	6	5	7		-
UNITED KINGDOM*	3,066	618	2,408	28	12		-
	32,048	248	28,024	3,391	374		11

\*NATO COUNTRIES

TABLE P309C

DEPARTMENT OF DEFENSE  
DEPENDENT STRENGTHS BY REGIONAL AREA AND BY COUNTRY

MARCH 31, 1981

## TOTAL DEPENDENTS OF MILITARY AND CIVILIAN EMPLOYEES

REGIONAL AREA/COUNTRY	TOTAL	ARMY	AIR FORCE	NAVY	MARINE CORPS	CSD AND DEFENSE AGENCIES
(2) EAST ASIA & PACIFIC	67,573	12,124	31,104	18,454	5,728	163
AUSTRALIA	885	4	465	399	17	-
BURMA	9	4	1	-	4	-
CHINA MAINLAND	8	3	2	1	2	-
TAIWAN	16	-	-	8	8	-
HONG KONG	61	19	15	12	15	-
INDONESIA	64	6	17	26	13	2
JAPAN (INCLUDING OKINAWA)	35,134	3,681	17,444	9,076	4,843	90
OKINAWA	(21)	(-)	(-)	(-)	(-)	(21)
MALAYSIA	18	10	5	3	-	-
NEW ZEALAND	100	5	30	60	5	-
PHILIPPINES	20,718	65	11,362	8,562	723	6
REPUBLIC OF KOREA	10,355	8,293	1,692	266	64	40
SINGAPORE	41	5	5	17	11	3
THAILAND	143	29	66	24	23	1
(3) AFRICA, NEAR EAST & SOUTH ASIA	1,096	359	379	169	158	31
AFGHANISTAN	3	-	-	-	3	-
BAHRAIN	32	-	-	32	-	-
CAMEROON	4	-	-	3	1	-
CHAD	3	3	-	-	-	-
EGYPT	99	6	32	52	9	-
ETHIOPIA	6	3	-	-	3	-
GABON	4	-	-	-	4	-
GHANA	8	5	-	-	3	-
INDIA	41	11	10	10	10	-
ISRAEL	75	10	39	13	13	-
IVORY COAST	9	6	-	-	3	-
JORDAN	38	26	12	-	-	-
KENYA	23	-	7	2	14	-
KUWAIT	6	-	3	2	1	-
LIBERIA	13	5	2	2	4	-
MADAGASCAR	3	-	-	-	3	-
MALAWI	3	3	-	-	-	-
MALI	2	-	-	-	2	-
MOROCCO	42	4	14	9	15	-

TABLE P309C

DEPARTMENT OF DEFENSE  
DEPENDENT STRENGTHS BY REGIONAL AREA AND BY COUNTRY

MARCH 31, 1981

## TOTAL DEPENDENTS OF MILITARY AND CIVILIAN EMPLOYEES

REGIONAL AREA/COUNTRY	TOTAL	ARMY	AIR FORCE	NAVY	MARINE CORPS	OSD AND DEFENSE AGENCIES
NEPAL	3	3	-	-	-	-
NIGER	3	-	-	-	3	-
NIGERIA	9	1	4	-	3	1
OMAN	1	-	1	-	-	-
PAKISTAN	19	3	7	4	5	-
REPUBLIC OF CAPE VERDE	1	-	-	-	1	-
SAUDI ARABIA	486	207	223	18	8	30
SENEGAL	13	-	-	10	3	-
SOMALIA	4	3	-	-	1	-
SOUTH AFRICA	18	5	5	8	-	-
SRI LANKA	4	-	-	-	4	-
SUDAN	9	6	3	-	-	-
SYRIA	14	3	-	-	11	-
TANZANIA, UNITED REPUBLIC OF	9	-	-	-	9	-
TUNISIA	38	22	3	4	9	-
UPPER VOLTA	1	-	-	-	1	-
YEMEN (SANA)	11	5	3	-	3	-
ZAIRE	33	19	11	-	3	-
ZAMBIA	6	-	-	-	6	-
(4) WESTERN HEMISPHERE	14,705	6,334	3,606	3,907	715	143
ANTIGUA	104	-	3	101	-	-
ARGENTINA	40	12	13	11	4	-
BAHAMAS, THE	46	-	-	42	4	-
BARBADOS	4	-	-	1	3	-
BELIZE	2	-	-	2	-	-
BERMUDA	1,086	-	-	1,032	54	-
BOLIVIA	16	10	3	-	3	-
BRAZIL	62	16	24	4	17	1
CANADA	1,001	7	459	482	35	18
CHILE	21	6	1	3	6	5
COLOMBIA	51	16	16	8	9	2
COSTA RICA	7	-	-	3	2	2
CUBA (GUANTANAMO)	1,816	-	15	1,818	181	2
DOMINICA	1	-	-	1	-	-
DOMINICAN REPUBLIC	27	5	1	8	9	4

TABLE P309C

DEPARTMENT OF DEFENSE  
DEPENDENT STRENGTHS BY REGIONAL AREA AND BY COUNTRY

MARCH 31, 1981

## TOTAL DEPENDENTS OF MILITARY AND CIVILIAN EMPLOYEES

REGIONAL AREA/COUNTRY	TOTAL	ARMY	AIR FORCE	NAVY	MARINE CORPS	OSD AND DEFENSE AGENCIES
ECUADOR	36	7	13	2	4	10
EL SALVADOR	7	1	3	-	3	-
GRENADA	2	-	-	2	-	-
GUATEMALA	22	17	1	1	-	3
GUYANA	2	-	-	1	1	-
HAITI	12	4	1	3	4	-
HONDURAS	44	15	12	6	8	1
JAMAICA	9	-	-	9	-	-
MEXICO	77	7	6	33	29	-
NICARAGUA	8	-	4	-	-	4
PANAMA	10,042	6,157	2,977	513	322	73
PARAGUAY	20	6	3	-	4	7
PERU	43	6	22	6	3	6
ST. LUCIA	1	-	-	-	1	-
TRINIDAD AND TOBAGO	3	-	-	2	1	-
URUGUAY	34	23	5	3	3	-
VENEZUELA	59	19	22	8	5	5
(5) ANTARCTICA	-	-	-	-	-	-
(6) EASTERN EUROPE	203	91	42	28	27	15
BULGARIA	8	2	2	-	4	-
CZECHOSLOVAKIA	15	-	14	-	1	-
GERMAN DEMOCRATIC REPUBLIC	63	58	-	-	5	-
HUNGARY	14	4	3	4	3	-
POLAND	14	5	1	2	5	1
ROMANIA	6	3	3	-	-	-
UNION OF SOVIET SOCIALIST REPUBLICS	65	14	11	20	6	14
YUGOSLAVIA	18	5	8	2	3	-
(7) UNDISTRIBUTED	406	-	406	-	-	-

NOTE: DEPENDENTS OF CIVILIAN EMPLOYEES EXCLUDES DEPENDENTS OF U.S. CITIZEN CIVILIANS IN ALASKA, HAWAII, AND U.S. TERRITORIES WHO ARE PERMANENT RESIDENTS AND EMPLOYED IN THE STATE OR TERRITORY OF THEIR RESIDENCE.

TABLE P309C

DEPARTMENT OF DEFENSE  
DEPENDENT STRENGTHS BY REGIONAL AREA AND BY COUNTRY

MARCH 31, 1981

## DEPENDENTS OF ACTIVE DUTY MILITARY

REGIONAL AREA/COUNTRY	TOTAL	ARMY	AIR FORCE	NAVY	MARINE CORPS
TOTAL WORLDWIDE	2,859,539	1,319,407	830,138	551,875	158,119
U.S. TERRITORY AND SPECIAL LOCATIONS	2,502,212	1,130,451	703,529	517,817	150,415
CONTINENTAL U.S.	2,411,996	1,105,667	676,106	469,834	140,369
ALASKA	22,140	8,155	12,491	1,390	104
HAWAII	52,628	15,452	9,712	18,103	9,361
AMERICAN SAMOA	22	4	-	6	12
GUAM	11,816	21	5,120	6,365	310
MIDWAY ISLANDS	-	-	-	-	-
PUERTO RICO	3,593	1,132	100	2,105	256
TRUST TERRITORY OF THE PACIFIC ISLANDS	-	-	-	-	-
VIRGIN ISLANDS OF THE U.S.	17	-	-	14	3
TOTAL FOREIGN COUNTRIES	357,327	188,956	126,609	34,058	7,704
COMMAND SPONSORED	-	-	-	-	-
NON-COMMAND SPONSORED	-	-	-	-	-
(1) WESTERN & SOUTHERN EUROPE	278,714	171,421	92,529	13,688	1,076
AUSTRIA	21	10	8	3	-
BELGIUM*	3,469	2,069	1,196	147	37
CYPRUS	4	4	-	-	-
DENMARK*	63	9	33	8	13
FINLAND	24	12	3	5	4
FRANCE*	77	17	28	20	12
GERMANY (FED. REPUBLIC & WEST BERLIN)*	206,848	162,959	43,337	415	137
GREECE*	3,305	484	2,499	312	10
ICELAND*	1,738	-	403	1,294	41
IRELAND	11	5	-	-	6
ITALY*	14,018	3,994	4,967	4,905	152
LUXEMBOURG*	5	-	-	-	5
MALTA	-	-	-	-	-
NETHERLANDS*	3,244	867	2,309	30	18
NORWAY*	363	54	221	54	34
PORTUGAL*	1,830	25	1,420	385	-
SPAIN	9,820	49	6,826	2,743	202
SWEDEN	37	3	14	8	12
SWITZERLAND	19	1	6	5	7
TURKEY*	2,952	618	2,294	28	12
UNITED KINGDOM*	30,866	201	26,965	3,326	374

\*NATO COUNTRIES

TABLE P309C

DEPARTMENT OF DEFENSE  
DEPENDENT STRENGTHS BY REGIONAL AREA AND BY COUNTRY

MARCH 31, 1981

## DEPENDENTS OF ACTIVE DUTY MILITARY

REGIONAL AREA/COUNTRY	TOTAL	ARMY	AIR FORCE	NAVY	MARINE CORPS
(2) EAST ASIA & PACIFIC	63,430	10,896	29,864	16,940	5,728
AUSTRALIA	873	4	465	387	17
BURMA	9	4	1	-	4
CHINA MAINLAND	6	3	2	1	2
TAIWAN	18	-	-	8	8
HONG KONG	51	19	15	12	15
INDONESIA	51	6	17	25	13
JAPAN (INCLUDING OKINAWA)	32,574	2,864	16,511	9,336	4,843
OKINAWA	(-)	(-)	(-)	(-)	(-)
MALAYSIA	15	7	5	3	-
NEW ZEALAND	100	5	30	60	5
PHILIPPINES	19,805	65	11,159	7,858	723
REPUBLIC OF KOREA	9,734	7,867	1,588	215	64
SINGAPORE	35	5	5	14	11
THAILAND	139	29	66	21	23
(3) AFRICA, NEAR EAST & SOUTH ASIA	980	359	299	164	158
AFGHANISTAN	3	-	-	-	3
BAHRAIN	32	-	-	32	-
CAMEROON	4	-	-	3	1
CHAD	3	3	-	-	-
EGYPT	90	6	25	49	9
ETHIOPIA	6	3	-	-	3
GABON	4	-	-	-	4
GHANA	6	5	-	-	3
INDIA	41	11	10	10	10
ISRAEL	72	10	36	13	13
IVORY COAST	9	6	-	-	3
JORDAN	38	26	12	-	-
KENYA	23	-	7	2	14
KUWAIT	4	-	3	-	1
LIBERIA	13	5	2	2	4
MADAGASCAR	3	-	-	-	3
MALAWI	3	3	-	-	-
MALI	2	-	-	-	2
MOROCCO	39	4	11	9	15

TABLE P309C

DEPARTMENT OF DEFENSE  
DEPENDENT STRENGTHS BY REGIONAL AREA AND BY COUNTRY

MARCH 31, 1981

## DEPENDENTS OF ACTIVE DUTY MILITARY

REGIONAL AREA/COUNTRY	TOTAL	ARMY	AIR FORCE	NAVY	MARINE CORPS
NEPAL	3	3	-	-	-
NIGER	3	-	-	-	3
NIGERIA	8	1	4	-	3
OMAN	1	-	1	-	-
PAKISTAN	19	3	7	4	5
REPUBLIC OF CAPE VERDE	1	-	-	-	1
SAUDI ARABIA	395	207	162	18	6
SENEGAL	13	-	-	10	3
SOMALIA	4	3	-	-	1
SOUTH AFRICA	18	5	5	8	-
SRI LANKA	4	-	-	-	4
SUDAN	8	6	2	-	-
SYRIA	14	3	-	-	11
TANZANIA, UNITED REPUBLIC OF	9	-	-	-	9
TUNISIA	38	22	3	4	9
UPPER VOLTA	1	-	-	-	1
YEMEN (SANA)	8	5	-	-	3
ZAIRE	30	19	8	-	3
ZAMBIA	6	-	-	-	6
(4) WESTERN HEMISPHERE	13,609	6,167	3,469	3,238	715
ANTIGUA	104	-	3	101	-
ARGENTINA	40	12	13	11	4
BAHAMAS, THE	32	-	-	28	4
BARBADOS	4	-	-	1	3
BELIZE	2	-	-	2	-
BERMUDA	782	-	-	728	54
BOLIVIA	16	10	3	-	3
BRAZIL	58	13	24	4	17
CANADA	981	7	457	482	35
CHILE	16	6	1	3	6
COLOMBIA	49	16	16	8	9
COSTA RICA	5	-	-	3	2
CUBA (GUANTANAMO)	1,603	-	15	1,407	181
DOMINICA	1	-	-	1	-
DOMINICAN REPUBLIC	23	5	1	8	9

TABLE P309C

DEPARTMENT OF DEFENSE  
DEPENDENT STRENGTHS BY REGIONAL AREA AND BY COUNTRY

MARCH 31, 1981

DEPENDENTS OF ACTIVE DUTY MILITARY

REGIONAL AREA/COUNTRY	TOTAL	ARMY	AIR FORCE	NAVY	MARINE CORPS
ECUADOR	26	7	13	2	4
EL SALVADOR	7	1	3	-	3
GRENADA	2	-	-	2	-
GUATEMALA	19	17	1	1	-
GUYANA	2	-	-	1	1
HAITI	12	4	1	3	4
HONDURAS	43	15	12	6	6
JAMAICA	9	-	-	9	-
MEXICO	77	7	8	33	29
NICARAGUA	4	-	4	-	-
PANAMA	9,550	6,013	2,842	373	322
PARAGUAY	13	8	3	-	4
PERU	37	6	22	6	3
ST. LUCIA	1	-	-	-	1
TRINIDAD AND TOBAGO	3	-	-	2	1
URUGUAY	34	23	5	3	3
VENEZUELA	54	19	22	8	5
(5) ANTARCTICA	-	-	-	-	-
(6) EASTERN EUROPE	188	91	42	28	27
BULGARIA	8	2	2	-	4
CZECHOSLOVAKIA	15	-	14	-	1
GERMAN DEMOCRATIC REPUBLIC	63	58	-	-	5
HUNGARY	14	4	3	4	3
POLAND	13	5	1	2	5
ROMANIA	6	3	3	-	-
UNION OF SOVIET SOCIALIST REPUBLICS	51	14	11	20	6
YUGOSLAVIA	18	5	8	2	3
(7) UNDISTRIBUTED	406	-	406	-	-

TABLE P309C

DEPARTMENT OF DEFENSE  
DEPENDENT STRENGTHS BY REGIONAL AREA AND BY COUNTRY

MARCH 31, 1981

DEPENDENTS OF U.S. CITIZEN CIVILIAN EMPLOYEES

REGIONAL AREA/COUNTRY	TOTAL	ARMY	AIR FORCE	NAVY	OSD AND DEFENSE AGENCIES
TOTAL WORLDWIDE	22,917	19,203	5,616	3,177	921
U.S. TERRITORY AND SPECIAL LOCATIONS					
ALASKA	2,681	1,127	667	767	120
HAWAII	1,353	819	340	180	14
GUAM	606	255	177	121	53
PUERTO RICO	632	-	150	440	42
TRUST TERRITORY OF THE PACIFIC ISLANDS	83	53	-	26	4
	7	-	-	-	7
TOTAL FOREIGN COUNTRIES	20,236	12,076	4,949	2,410	801
(1) WESTERN & SOUTHERN EUROPE	14,866	10,703	3,492	222	449
AUSTRIA	8	-	-	-	8
BELGIUM*	408	290	34	-	84
FINLAND	12	-	-	-	12
FRANCE*	10	-	5	-	5
GERMANY (FED. REPUBLIC & WEST BERLIN)*	11,113	9,579	1,235	4	295
GREECE*	143	-	128	10	5
ICELAND*	71	-	-	71	-
ITALY*	991	782	129	60	20
LUXEMBOURG*	3	-	-	-	3
NETHERLANDS*	58	5	47	-	6
NORWAY*	1	-	1	-	-
PORTUGAL*	119	-	119	-	-
SPAIN	633	-	621	12	-
TURKEY*	114	-	114	-	-
UNITED KINGDOM*	1,182	47	1,059	65	11
*NATO COUNTRIES					
(2) EAST ASIA & PACIFIC	4,143	1,226	1,240	1,514	163
AUSTRALIA	12	-	-	12	-
INDONESIA	3	-	-	1	2
JAPAN (INCLUDING OKINAWA)	2,560	797	933	740	90
OKINAWA	(21)	(-)	(-)	(-)	(21)
MALAYSIA	3	3	-	-	-

TABLE P309C

DEPARTMENT OF DEFENSE  
DEPENDENT STRENGTHS BY REGIONAL AREA AND BY COUNTRY

MARCH 31, 1981

## DEPENDENTS OF U.S. CITIZEN CIVILIAN EMPLOYEES

REGIONAL AREA/COUNTRY	TOTAL	ARMY	AIR FORCE	NAVY	OSD AND DEFENSE AGENCIES
PHILIPPINES	913	-	203	704	6
REPUBLIC OF KOREA	621	426	104	51	40
SINGAPORE	6	-	-	3	3
THAILAND	4	-	-	3	1
(3) AFRICA, NEAR EAST & SOUTH ASIA	116	-	60	5	31
EGYPT	9	-	6	3	-
ISRAEL	3	-	3	-	-
KUWAIT	2	-	-	2	-
MOROCCO	3	-	3	-	-
NIGERIA	1	-	-	-	1
SAUDI ARABIA	91	-	61	-	30
SUDAN	1	-	1	-	-
YEMEN (SANA)	3	-	3	-	-
ZAIRE	3	-	3	-	-
(4) WESTERN HEMISPHERE	1,096	147	137	669	143
BAHAMAS, THE	14	-	-	14	-
BERMUDA	304	-	-	304	-
BRAZIL	4	3	-	-	1
CANADA	20	-	2	-	18
CHILE	5	-	-	-	5
COLOMBIA	2	-	-	-	2
COSTA RICA	2	-	-	-	2
CUBA (GUANTANAMO)	213	-	-	211	2
DOMINICAN REPUBLIC	4	-	-	-	4
ECUADOR	10	-	-	-	10
GUATEMALA	3	-	-	-	3
HONDURAS	1	-	-	-	1
NICARAGUA	4	-	-	-	4
PANAMA	492	144	135	140	73
PARAGUAY	7	-	-	-	7
PERU	6	-	-	-	6
VENEZUELA	5	-	-	-	5
(5) ANTARCTICA	-	-	-	-	-

TABLE P309C

DEPARTMENT OF DEFENSE  
DEPENDENT STRENGTHS BY REGIONAL AREA AND BY COUNTRY

MARCH 31, 1981

DEPENDENTS OF U.S. CITIZEN CIVILIAN EMPLOYEES

REGIONAL AREA/COUNTRY	TOTAL	ARMY	AIR FORCE	NAVY	CSD AND DEFENSE AGENCIES
(6) EASTERN EUROPE	15	-	-	-	15
POLAND	1	-	-	-	1
UNION OF SOVIET SOCIALIST REPUBLICS	14	-	-	-	14
(7) UNDISTRIBUTED	-	-	-	-	-

NOTE: DEPENDENTS OF CIVILIAN EMPLOYEES EXCLUDES DEPENDENTS OF U.S. CITIZEN CIVILIANS IN ALASKA, HAWAII, AND U.S. TERRITORIES WHO ARE PERMANENT RESIDENTS AND EMPLOYED IN THE STATE OR TERRITORY OF THEIR RESIDENCE.

DEPARTMENT OF DEFENSE  
WASHINGTON HEADQUARTERS SERVICES  
DIRECTORATE FOR INFORMATION  
OPERATIONS AND REPORTS  
JUN 15, 1981