

AD-A107 540

HOSKINS-WESTERN-SONDEREGGER INC LINCOLN NE F/6 13/13  
NATIONAL DAM SAFETY PROGRAM. MO NONAME 27 DAM (MO 10353), MISSO--ETC(U)  
MAY 79 R S DECKER, & JAMISON, & ULMER DACW43-79-C-0046  
ML

UNCLASSIFIED

1 OF 1  
AD A107540

END  
DATE  
FILMED  
1984  
DTIC

MISSOURI-NEMAHA-NODAWAY BASIN

①

LEVEL II

MONONAME 27 DAM

HOLT COUNTY, MISSOURI

MO. 10353

DA107340

PHASE 1 INSPECTION REPORT  
NATIONAL DAM SAFETY PROGRAM



United States Army  
Corps of Engineers  
... Serving the Army  
... Serving the Nation

St. Louis District

DTIC  
ELECTE  
NOV 20 1981  
S D  
D

PREPARED BY: U.S. ARMY ENGINEER DISTRICT, ST. LOUIS

FOR: STATE OF MISSOURI

DIC FILE COPY

MAY, 1979

DISTRIBUTION STATEMENT A  
Approved for public release  
Distribution Unlimited

81 11 19 009

UNCLASSIFIED

SECURITY CLASSIFICATION OF THIS PAGE (When Data Entered)

REPORT DOCUMENTATION PAGE		READ INSTRUCTIONS BEFORE COMPLETING FORM
1. REPORT NUMBER	2. GOVT ACCESSION NO. AD-A107540	3. RECIPIENT'S CATALOG NUMBER
4. TITLE (and Subtitle) Phase I Dam Inspection Report National Dam Safety Program MO No-Name 27 Dam (MO 10353) Holt County, Missouri		5. TYPE OF REPORT & PERIOD COVERED Final Report
7. AUTHOR(s) Hoskins-Western-Sonderegger, Inc.		6. PERFORMING ORG. REPORT NUMBER
9. PERFORMING ORGANIZATION NAME AND ADDRESS U.S. Army Engineer District, St. Louis Dam Inventory and Inspection Section, LMSED-PD 210 Tucker Blvd., North, St. Louis, Mo. 63101		8. CONTRACT OR GRANT NUMBER(s) DACW43-79-C-0046
11. CONTROLLING OFFICE NAME AND ADDRESS U.S. Army Engineer District, St. Louis Dam Inventory and Inspection Section, LMSED-PD 210 Tucker Blvd., North, St. Louis, Mo. 63101		10. PROGRAM ELEMENT, PROJECT, TASK AREA & WORK UNIT NUMBERS
14. MONITORING AGENCY NAME & ADDRESS (If different from Controlling Office) 12-54		12. REPORT DATE May 1979
		13. NUMBER OF PAGES Approximately 45
		15. SECURITY CLASS. (of this report) UNCLASSIFIED
		15a. DECLASSIFICATION/DOWNGRADING SCHEDULE
16. DISTRIBUTION STATEMENT (of this Report) Approved for release; distribution unlimited. Rey S. Decker Gordon /Jamison Garold /Ulmer Harold P. /Hoskins		
17. DISTRIBUTION STATEMENT (of the abstract entered in Bio)		
18. SUPPLEMENTARY NOTES National Dam Safety Program. MO Noname 27 Dam (MO 10353), Missouri - Nemaha - Nodaway Basin, Holt County, Missouri. Phase I Inspection Report.		
19. KEY WORDS (Continue on reverse side if necessary and identify by block number) Dam Safety, Lake, Dam Inspection, Private Dams		
20. ABSTRACT (Continue on reverse side if necessary and identify by block number) This report was prepared under the National Program of Inspection of Non-Federal Dams. This report assesses the general condition of the dam with respect to safety, based on available data and on visual inspection, to determine if the dam poses hazards to human life or property.		

314121

## INSTRUCTIONS FOR PREPARATION OF REPORT DOCUMENTATION PAGE

**RESPONSIBILITY.** The controlling DoD office will be responsible for completion of the Report Documentation Page, DD Form 1473, in all technical reports prepared by or for DoD organizations.

**CLASSIFICATION.** Since this Report Documentation Page, DD Form 1473, is used in preparing announcements, bibliographies, and data banks, it should be unclassified if possible. If a classification is required, identify the classified items on the page by the appropriate symbol.

### COMPLETION GUIDE

**Block 0.** General. Make Blocks 1, 4, 5, 6, 7, 11, 13, 15, and 16 agree with the corresponding information on the report cover. Leave Blocks 2, 3, 8, 9, 10, 12, 14, 17, 18, 19, and 20 blank.

**Block 1.** Report Number. Enter the unique alphanumeric report number shown on the cover.

**Block 2.** Government Accession No. Leave Blank. This space is for use by the Defense Documentation Center.

**Block 3.** Recipient's Catalog Number. Leave blank. This space is for the use of the report recipient to assist in future retrieval of the document.

**Block 4.** Title and Subtitle. Enter the title in all capital letters exactly as it appears on the publication. Titles should be unclassified whenever possible. Write out the English equivalent for Greek letters and mathematical symbols in the title (see "Abstracting Scientific and Technical Reports of Defense-sponsored RDT/E," AD-667 000). If the report has a subtitle, this subtitle should follow the main title, be separated by a comma or semicolon if appropriate, and be initially capitalized. If a publication has a title in a foreign language, translate the title into English and follow the English translation with the title in the original language. Make every effort to simplify the title before publication.

**Block 5.** Type of Report and Period Covered. Indicate here whether report is interim, final, etc., and, if applicable, inclusive dates of period covered, such as the life of a contract covered in a final contractor report.

**Block 6.** Performing Organization Report Number. Only numbers other than the official report number shown in Block 1, such as series numbers for in-house reports or a contractor/grantee number assigned by him, will be placed in this space. If no such numbers are used, leave this space blank.

**Block 7.** Author(s). Include corresponding information from the report cover. Give the name(s) of the author(s) in conventional order (for example, John R. Doe or, if author prefers, J. Robert Doe). In addition, list the affiliation of an author if it differs from that of the performing organization.

**Block 8.** Contract or Grant Number(s). For a contractor or grantee report, enter the complete contract or grant number(s) under which the work reported was accomplished. Leave blank in in-house reports.

**Block 9.** Performing Organization Name and Address. For in-house reports enter the name and address, including office symbol, of the performing activity. For contractor or grantee reports enter the name and address of the contractor or grantee who prepared the report and identify the appropriate corporate division, school, laboratory, etc., of the author. List city, state, and ZIP Code.

**Block 10.** Program Element, Project, Task Area, and Work Unit Numbers. Enter here the number code from the applicable Department of Defense form, such as the DD Form 1498, "Research and Technology Work Unit Summary" or the DD Form 1634, "Research and Development Planning Summary," which identifies the program element, project, task area, and work unit or equivalent under which the work was authorized.

**Block 11.** Controlling Office Name and Address. Enter the full, official name and address, including office symbol, of the controlling office. (Equates to funding/sponsoring agency. For definition see DoD Directive 5200.20, "Distribution Statements on Technical Documents.")

**Block 12.** Report Date. Enter here the day, month, and year or month and year as shown on the cover.

**Block 13.** Number of Pages. Enter the total number of pages.

**Block 14.** Monitoring Agency Name and Address (if different from Controlling Office). For use when the controlling or funding office does not directly administer a project, contract, or grant, but delegates the administrative responsibility to another organization.

**Blocks 15 & 15a.** Security Classification of the Report: Declassification/Downgrading Schedule of the Report. Enter in 15 the highest classification of the report. If appropriate, enter in 15a the declassification/downgrading schedule of the report, using the abbreviations for declassification/downgrading schedules listed in paragraph 4-207 of DoD 5200.1-R.

**Block 16.** Distribution Statement of the Report. Insert here the applicable distribution statement of the report from DoD Directive 5200.20, "Distribution Statements on Technical Documents."

**Block 17.** Distribution Statement (of the abstract entered in Block 20, if different from the distribution statement of the report). Insert here the applicable distribution statement of the abstract from DoD Directive 5200.20, "Distribution Statements on Technical Documents."

**Block 18.** Supplementary Notes. Enter information not included elsewhere but useful, such as: Prepared in cooperation with ... Translation of (or by) ... Presented at conference of ... To be published in ...

**Block 19.** Key Words. Select terms or short phrases that identify the principal subjects covered in the report, and are sufficiently specific and precise to be used as index entries for cataloging, conforming to standard terminology. The DoD "Thesaurus of Engineering and Scientific Terms" (TEST), AD-672 000, can be helpful.

**Block 20.** Abstract. The abstract should be a brief (not to exceed 200 words) factual summary of the most significant information contained in the report. If possible, the abstract of a classified report should be unclassified and the abstract to an unclassified report should consist of publicly-releasable information. If the report contains a significant bibliography or literature survey, mention it here. For information on preparing abstracts see "Abstracting Scientific and Technical Reports of Defense-Sponsored RDT&E," AD-667 000.

MONONAME 27 DAM  
HOLT COUNTY, MISSOURI  
MISSOURI INVENTORY NO. 10353

PHASE I INSPECTION REPORT  
NATIONAL DAM SAFETY PROGRAM

PREPARED BY  
HOSKINS-WESTERN-SONDEREGGER, INC.  
CONSULTING ENGINEERS  
LINCOLN, NEBRASKA

UNDER DIRECTION OF  
ST. LOUIS DISTRICT, CORPS OF ENGINEERS  
FOR  
GOVERNOR OF MISSOURI  
MAY, 1979



PHASE I INSPECTION REPORT  
NATIONAL DAM SAFETY PROGRAM

TABLE OF CONTENTS

<u>PARAGRAPH NO.</u>	<u>TITLE</u>	<u>PAGE NO.</u>
	Assessment Summary	
	Overview Photograph	
SECTION 1 - PROJECT INFORMATION		
1.1	General	1
1.2	Description of Project	1
1.3	Pertinent Data	2
SECTION 2 - ENGINEERING DATA		
2.1	Design	4
2.2	Construction	4
2.3	Operation	4
2.4	Evaluation	4
SECTION 3 - VISUAL INSPECTION		
3.1	Findings	5
3.2	Evaluation	7
SECTION 4 - OPERATIONAL PROCEDURES		
4.1	Procedures	8
4.2	Maintenance of Dam	8
4.3	Maintenance of Operating Facilities	8
4.4	Description of Any Warning System in Effect	8
4.5	Evaluation	
SECTION 5 - HYDRAULIC/HYDROLOGIC		
5.1	Evaluation of Features	9
SECTION 6 - STRUCTURAL STABILITY		
6.1	Evaluation of Structural Stability	11
SECTION 7 - ASSESSMENT/REMEDIAL MEASURES		
7.1	Dam Assessment	12
7.2	Remedial Measures	12

## APPENDIX A - MAPS

Plate A-1	Vicinity Topography
Plate A-2	Location Map

## APPENDIX B - PHOTOGRAPHS

Plate B-1	Photo Index	
Plate B-2	Photo No. 2	Upstream Face From Right Side
	Photo No. 3	Crest of Dam From Right Side
Plate B-3	Photo No. 4	Upstream Along Emergency Spillway
	Photo No. 5	Downstream Along Emergency Spillway
Plate B-4	Photo No. 6	Downstream Slope From Left End
	Photo No. 7	Large Rodent Hole in Downstream Slope
Plate B-5	Photo No. 8	Seep Area
	Photo No. 9	Slip Area
Plate B-6	Photo No. 10	Looking Downstream
	Photo No. 11	Erosion of Upstream Face
Plate B-7	Photo No. 12	Upstream Across Reservoir
	Photo No. 13	Seep Area in Field

## APPENDIX C - PROJECT PLATES

Plate C-1	Phase I - Plan and Centerline Profile of Dam
Plate C-2	Phase I - Section of Dam, Profile and Section of Emergency Spillway

## APPENDIX D - HYDRAULIC AND HYDROLOGIC DATA

Plates D-1 & D-2	Hydrologic Computations
Plate D-3	Overtop Rating Curve
Plate D-4	Ratio of PMF - Discharge Curve
Plates D-5 to D-17	Computer Input and Output for 1/2 PMF

PHASE I REPORT  
NATIONAL DAM SAFETY PROGRAM  
ASSESSMENT SUMMARY

Name of Dam	Mononame 27 Dam
State Located	Missouri
County Located	Holt County
Stream	Davis Creek Offstream
Date of Inspection	May 16, 1979

Mononame 27 Dam was inspected by an interdisciplinary team of engineers from Hoskins-Western-Sonderegger, Inc. The purpose of the inspection was to make an assessment of the general condition of the dam with respect to safety, based upon available data and visual inspection, in order to determine if the dam poses hazards to human life or property.

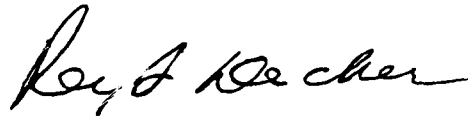
The guidelines used in the assessment were furnished by the Department of the Army, Office of the Chief of Engineers and developed with the help of several Federal and State agencies, professional engineering organizations, and private engineers. Based on these guidelines, this dam is classified as a small size dam with a high downstream hazard potential. Failure would threaten life and property. One dwelling with associated farm buildings and one county road lie within the estimated damage zone which extends approximately one half mile downstream of the dam.

Our inspection and evaluation indicates that the spillway does not meet the criteria set forth in the recommended guidelines for a small dam having a high hazard potential. Considering the volume of water impounded, the large floodplain downstream, the one house with associated farm buildings, and the road system downstream of the dam, one-half of the Probable Maximum Flood is the appropriate spillway design flood. The spillway will pass the 100 year flood (flood having a one percent chance of being exceeded in any year) without overtopping the dam. The spillway will pass 30% of the Probable Maximum Flood without overtopping the dam. The Probable Maximum Flood (PMF) is defined as the flood that may be expected from the most severe combination of critical meteorologic and hydrologic conditions that are reasonably possible in the region.

No design data were available for this dam. Seepage and stability analyses comparable to the requirements of the "Recommended Guidelines for Safety Inspection of Dams" were not available, which is considered a deficiency. These analyses should be obtained in the future.

Other deficiencies observed during the inspection are a heavy growth of willow trees on the upstream slope, erosion of the upstream face, and rodent holes in the downstream face.

Several items of preventative maintenance need to be initiated by the owner. These are described in detail in the body of the report.



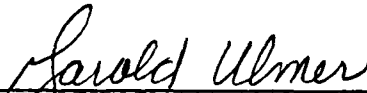
---

Rey S. Decker  
E-3703



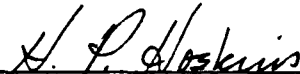
---

Gordon Jamison



---

Garold Ulmer  
E-4777



---

Harold P. Hoskins  
Chairman of Board  
Hoskins-Western-Sonderegger, Inc.  
E-8696



PHOTO NO. 1  
OVERVIEW TAKEN FROM  
NORTH ON LEFT SIDE

PHASE I INSPECTION REPORT  
NATIONAL DAM SAFETY PROGRAM  
MONONAME 27 DAM - MO 10353  
HOLT COUNTY, MISSOURI

SECTION 1 - PROJECT INFORMATION

1.1 GENERAL

- a. Authority. The National Dam Inspection Act, Public Law 92-367, authorized the Secretary of the Army, through the Corps of Engineers, to initiate a program of safety inspection of dams throughout the United States. Pursuant to the above, the St. Louis District, Corps of Engineers, District Engineer directed that a safety inspection of Mononame 27 Dam be made.
- b. Purpose of Inspection. The purpose of the inspection was to make an assessment of the general condition of the dam with respect to safety, based upon available data and visual inspection, in order to determine if the dam poses hazards to human life or property.
- c. Evaluation Criteria. Criteria used to evaluate the dam were furnished by the Department of the Army, Office of the Chief of Engineers, in "Recommended Guidelines for Safety Inspection of Dams". Appendix D to "Report of the Chief of Engineers on the National Program of Inspection of Dams", dated May, 1975, and published by the Department of the Army, Office of the Chief of Engineers.

1.2 DESCRIPTION OF PROJECT

- a. Description of Dam and Appurtenances. Mononame 27 Dam is an earthfill structure approximately 600 feet in length with a maximum height of approximately 19 feet. The vegetated earth spillway is cut into the left (east) abutment. The exit channel for the spillway discharges along the downstream toe of the dam from the left abutment to the old creek channel.
- b. Location. The dam is located in the northeast part of Holt County, Missouri, as shown on Plate A-2. The dam is shown on Plate A-1 in the SE $\frac{1}{4}$  of Section 16, T62N, R38W. The lake formed behind the dam is shown in the SE $\frac{1}{4}$  of Section 16, T62N, R38W.

- c. Size Classification. Criteria for determining the size classification of dams and impoundments are presented in the guidelines referenced in paragraph 1.1c above. Based on these criteria, this dam and impoundment is in the small size category.
- d. Hazard Classification. Guidelines for determining hazard classification are presented in the same guidelines as referenced in paragraph 1.1c above. Based on referenced guidelines, this dam is in the High Hazard Classification. The estimated damage zone extends approximately one-half mile downstream of the dam. Within the damage zone are one dwelling with associated farm buildings and one county road.
- e. Ownership. The dam is owned by Ronnie Tenney, Mound City, Missouri 64470.
- f. Purpose of Dam. Erosion and flood control.
- g. Design and Construction History. According to the inventory data, the dam was constructed in or about 1962. The owner of the property when it was constructed was not available and no information was available on the design or construction of this dam.
- h. Normal Operational Procedure. The spillway is uncontrolled and the pool level is maintained at or near the spillway crest elevation. Ronnie Tenney, the present owner, reported that he thought the spillway operated in 1974.

### 1.3 PERTINENT DATA

- a. Drainage Area. 0.146 sq. mi. (93.4 acres)
- b. Discharge at Damsite.
  - (1) All discharge at the damsite is through an uncontrolled earthen spillway.
  - (2) Estimated maximum flood at damsite - unknown.
  - (3) The emergency spillway capacity varies from 0 c.f.s. at elevation 980.7 (low point in spillway) to 50 c.f.s. at elevation 982.2 (low point on dam crest and maximum pool level).

c. Elevation (feet above MSL).

- (1) Top of Dam - 983 ± (nominal), 982.2 (low point)
- (2) Normal Pool - 980.7 ±
- (3) Spillway Crest - 980.7 ±
- (4) Stream bed at  $\text{C}$  of dam - 964 ±
- (5) Maximum tailwater - unknown.

d. Reservoir. Length of maximum pool - 800 ft. ±

e. Storage. (Acre-feet)

- (1) Spillway Crest (low point) - 140 ±
- (2) Top of Dam (low point) - 170 ±

f. Reservoir Surface (acres).

- (1) Top of Dam (low point) - 7+
- (2) Spillway Crest (low point) - 6.5+

g. Dam.

- (1) Type - earthfill
- (2) Length - 600 ± feet
- (3) Height - 19 feet ±
- (4) Top Width - 15 feet
- (5) Side Slopes

- (a) Downstream - 1 V on 2.2H (overall-measured)
- (b) Upstream - exposed surface nearly vertical

- (6) Zoning - unknown
- (7) Impervious core - unknown
- (8) Cutoff trench - unknown
- (9) Grout curtain - unknown
- (10) Drains - unknown
- (11) Wave protection - none
- (12) Downstream slope protection - vegetation

h. Diversion Channel and Regulating Tunnel - none.

i. Spillway.

- (1) Type - uncontrolled, vegetated earth
- (2) Location - left (east) abutment
- (3) Crest elevation - 980.7 feet
- (4) Control section - 15 feet ± wide, 48 feet ± long
- (5) Downstream channel - no constructed channel.

j. Regulating Outlets - none.

## SECTION 2 - ENGINEERING DATA

### 2.1 DESIGN

No design data were available.

### 2.2 CONSTRUCTION

No construction records were available for this dam. It was reported that the dam was built in 1962.

### 2.3 OPERATION

No data were available on the operation of the spillway. It was reported by Ronnie Tenney, owner, that the spillway operated in 1974.

### 2.4 EVALUATION

- a. Availability. No engineering data were available for evaluation.
- b. Adequacy. The field surveys and visual observations presented herein are considered adequate to support the conclusions of this report. Seepage and stability analyses comparable to the requirements of the 'Recommended Guidelines for Safety Inspection of Dams' were not available, which is considered a deficiency. These seepage and stability analyses should be performed for appropriate loading conditions (including earthquake loads) and made a matter of record.
- c. Validity. Not applicable.

## SECTION 3 - VISUAL INSPECTION

### 3.1 FINDINGS

- a. General. A visual inspection of Mononome 27 Dam and appurtenances was made on May 16, 1979. Engineers from Hoskins-Western-Sonderegger, Inc., Lincoln, Nebraska, making the inspection were: Gordon Jamison, Hydrology; Gerald Ulmer, Civil Engineer; and Rey S. Decker, Geology and Soil Engineering. Photographs taken during the inspection are shown in Appendix B. Specific observations are discussed below.
- b. Dam. This dam is a low earthfill structure built about 1962. The dam is located in the loess hills adjacent to the Missouri River. The abutments consist of 5 to 10 feet of loess overlying fine grained, plastic glacial till. Glacial till is exposed on the left abutment hillside some 15 to 20 feet above the elevation of the reservoir level. The loess soils capping the till are classed as medium plasticity CL. The till is dense and highly plastic CL or CH material containing occasional fine to medium sized gravels. Soils in the valley section consist of medium to highly plastic CL alluvium derived from the loess and the glacial till. The depth of alluvial soils is not known.

Materials in the surface of the dam are moderately plastic CL soils.

The 15 foot wide crest of the dam is well vegetated but is somewhat rutted by vehicular travel. The profile along the crest of the dam is somewhat irregular varying in elevation from 982.2 to 983.7 ± as shown in Appendix C. No cracks nor abnormal longitudinal deformations were noted on the crest. No evidence exists of dam overtopping.

The upstream face of the dam is covered with many willow trees ranging in size up to 3 or 4 inches in diameter. Most of the upstream slope has eroded to a near vertical face from the upstream crest down to the water level, as shown in Appendix B, Photo No. 11. A relatively flat, berm-like shoulder has developed just below the reservoir level upstream from the vertically eroded face. This berm-like shoulder supports most of the willow growth.

The downstream slope is covered with an excellent

vegetative cover of brome grass, lespedeza and other adapted grasses. Several rather large, 4 to 6 inch diameter rodent holes were observed on the downstream slope. A stick was inserted into one hole, Appendix B, Photo #7, to a depth of about 4 feet on an angle of about 45° from horizontal. No seepage outcrops were noted on the downstream face of the dam. However, seepage outcrops along the toe of the dam from approximate station 1 + 50 to 5 + 60. All seepage is clear and ponded with no evident discharge velocity. Seepage through the right abutment outcrops in the plowed field downstream from approximate centerline stations 5 + 00 to 5 + 60. This wet area extends 15 to 20 feet outside of the toe line of the dam.

There appears to be an old slip in the downstream slope located opposite about station 4 + 00. The slip occurred about 5 to 6 feet upslope from the toe, and is semi-circular in shape. It is about 20 feet wide, at the base and probably located over the old valley section. There is no seepage in the slip area and it appears to be stable. The cross section shown in Appendix C details the old slip area. No other cracking, settlement, or sinkholes were observed.

A one inch steel pipe, for stock water use, comes through the base of the dam at about station 2 + 50. The valve near the outlet end of the pipe is non-operable at the present time.

- c. Appurtenant Structures. The uncontrolled spillway consists of a vegetated earth cut through the left abutment with the exit channel following the trace of the downstream slope of the dam. The crest or control section is 15 feet ± wide and approximately 48 feet long. The crest of the spillway is approximately 2.3 feet below the top of dam. At the time of inspection, the water level in the reservoir was about 0.5 feet below the crest of the spillway which is the highest level the present owner has noted since 1976. The spillway is well vegetated with no signs of erosion. It was reported that the spillway operated in 1974.
- d. Reservoir Area. The reservoir area is bordered with a well vegetated buffer or siltation strip between the reservoir and adjacent cultivated land. No erosion was noted around the reservoir.
- e. Downstream Channel. The Channel downstream from the dam consists of a broad, well vegetated waterway without a well defined channel.

### 3.2 EVALUATION

The tree growth and the erosion on the upstream face of the dam could result in potential for failure of this structure. Additional studies would be required to determine the structural stability of the downstream slope from the standpoint of shear strength and seepage pressures. However, at the time of inspection seepage pressures did not appear to be excessive and no recent deformations were noted in the downstream slope with the present high reservoir level which is only about three feet below the top of dam.

## SECTION 4 - OPERATIONAL PROCEDURES

### 4.1 PROCEDURES

There are no controlled outlet works for this dam. The water level in the reservoir is controlled by precipitation, runoff, evapo-transpiration, seepage and the capacity of the uncontrolled spillway.

### 4.2 MAINTENANCE OF DAM

There is no regular maintenance program in effect for this structure. The owner reported that he plans to remove and treat the willow growth along the upstream face. The erosional damage of the upstream face should also be rectified.

### 4.3 MAINTENANCE OF OPERATING FACILITIES

No operating facilities exist at this dam.

### 4.4 DESCRIPTION OF ANY WARNING SYSTEM IN EFFECT

Upon checking with the owner there are no emergency plans or warning systems in effect for this dam.

### 4.5 EVALUATION

A serious potential of failure may result if the deficiencies in maintenance are not corrected.

## SECTION 5 - HYDRAULIC/HYDROLOGIC

### 5.1 EVALUATION OF FEATURES

- a. Design Data. No design data were found for this dam.
- b. Experience Data. The drainage area, reservoir surface area, and elevation-storage data were developed from the USGS Maitland, Missouri 15 minute topographic quadrangle map. The hydraulic computations for the spillway and dam overtopping discharge ratings were based on data collected in the field at the time of the field inspection.
- c. Visual Observations.
  - (1) There is no outlet pipe through the dam. The only discharge is through the uncontrolled vegetated earth spillway at the left (east) abutment.
  - (2) The spillway has an irregular trapezoidal shape with a well grassed channel bottom and side slopes. There is some evidence of scour at the extreme downstream end.
- d. Overtopping Potential. The spillway is too small to pass 50% of the probable maximum flood without overtopping the dam. The spillway will pass 30% of the probable maximum flood without overtopping the dam. The spillway will pass the 100-year frequency flood without overtopping the dam. The effect of overtopping on the structural or erosional stability of this dam is expected to be minimal. The results of the routings through the reservoir are tabulated in regards to the following conditions:

<u>Frequency</u>	<u>Inflow Discharge c.f.s.</u>	<u>Outflow Discharge c.f.s.</u>	<u>Maximum Pool Elevation</u>	<u>Freeboard Top of Dam Min. Elev. 982.2</u>	<u>Time Dam Overtopping Hr.</u>
100 Yr.	430	10	981.5	+0.7	-
0.5 PMF	800	160	982.8	-0.6	6
PMF	1600	1040	983.7	-1.5	10
0.3 PMF	500	50	982.2	0	-

According to the recommended guidelines from the Department of the Army, Office of the Chief of Engineer, this dam is classified as having a high hazard rating and a small size. Therefore, the one-half PMF to the PMF is the test for the adequacy of the dam and its spillway.

The estimated damage zone is described in Paragraph 1.2d of this report.

## SECTION 6 - STRUCTURAL STABILITY

### 6.1 EVALUATION OF STRUCTURAL STABILITY

- a. Visual Observation. The 2.2H on 1V downstream slope should provide adequate safety against major shear failures of this low dam. The small slide area observed on the downstream face probably resulted from over stressing a localized area of the valley alluvial foundation shortly after construction of the dam.

The seepage outcropping along and downstream from the toe of the dam undoubtedly comes through the foundation. The volume of seepage is low and exit velocities must be very slow since all effluent is clear. The seepage does not have any apparent adverse affect upon the present stability of the dam.

Erosion and sloughing of the upstream face could lead to potential failure of the structure. However, the vegetative cover and the nature of the materials in the dam indicate that the dam could probably withstand considerable overtopping flow without significant damage.

- b. Design and Construction Data. There were no design or construction data available. Seepage and stability analyses comparable to the requirements of the "Recommended Guidelines for Safety Inspection of Dams" were not available, which is considered a deficiency.
- c. Operating Records. There are no controlled operating facilities on this dam. Vegetation and materials in the spillway should withstand considerable flow without significant damage.
- d. Post Construction Changes. No post construction changes on this structure are known to the inspection team.
- e. Seismic Stability. The structure is located in the Zone 1 seismic probability area. An earthquake of the magnitude predicted in this zone is not expected to cause structural failure of this dam.

## SECTION 7 - ASSESSMENT/REMEDIAL MEASURES

### 7.1 DAM ASSESSMENT

- a. Safety. The ultimate safety of this dam is imperiled by the tree growth and erosion on the upstream face. Seepage along the downstream toe and structural stability do not at the present time appear to be critical to the safety of the dam. The spillway will pass the flood produced from 30% of the probable maximum flood. The effect of overtopping and/or spillway discharges on the structural or erosional stability of the dam are expected to be minimal.
- b. Adequacy of Information. Due to the lack of engineering data, the conclusions in this report are based upon performance history and visual observations. Seepage and stability analyses comparable to the requirements of the "Recommended Guidelines for Safety Inspection of Dams" were not available, which is considered a deficiency.
- c. Urgency. A program should be developed as soon as possible to monitor at regular intervals the deficiencies described in this report. The remedial measures recommended in paragraph 7.2 should be accomplished in the near future. The items recommended in paragraph 7.2.a should be pursued on a high priority basis.
- d. Necessity for Phase II. Phase II investigation is not considered necessary.
- e. Seismic Stability. The dam is located in Seismic Zone 1. An earthquake of this predicted magnitude is not expected to be hazardous to this dam.

### 7.2 REMEDIAL MEASURES

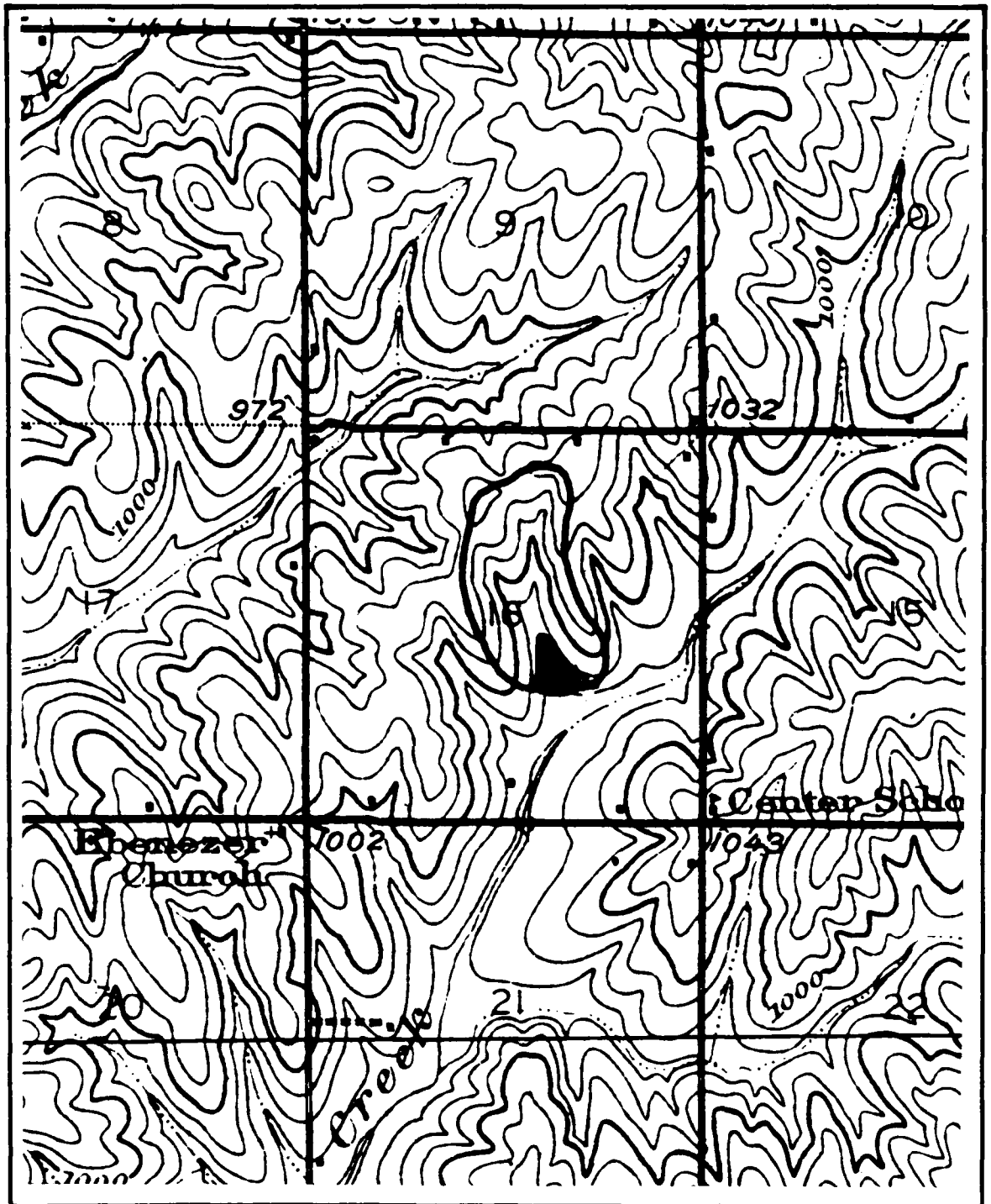
- a. Alternatives.
  - (1) The spillway on the left abutment should be enlarged. The enlarged spillway should have the capability of passing 50% of the probable maximum flood without overtopping the dam.
  - (2) The damage done by erosion on the upstream face should be repaired and measures taken to prevent erosion in the future.

(3) Seepage and stability analyses should be conducted.

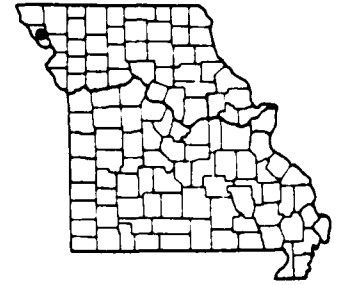
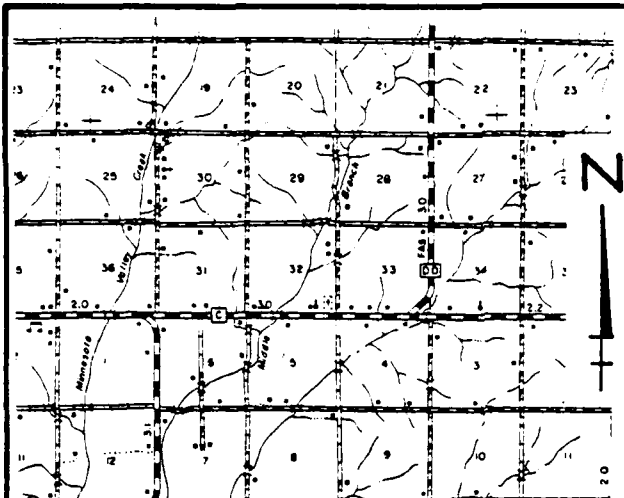
b. O & M Procedures

- (1) Willow trees and brush should be removed from the upstream embankment.
- (2) Rodent holes should be repaired.
- (3) Grass and weeds growing on the embankment should be mowed on a regular basis.
- (4) The dam should be inspected on a periodic basis to monitor vegetative growth, erosion of embankment and rodent infestation. The inspections should be followed by a preventative maintenance program that will cause repair to be done on a timely basis in order to protect the integrity of the dam.
- (5) A periodic check of the 1-inch pipe stockwater pipe as a possible source of seepage should be initiated.
- (6) A professional engineer experienced in the design and construction of earth dams should be retained by the owner to perform the work stated in 7.2a and 7.2b.

APPENDIX A  
MAPS



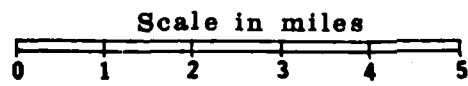
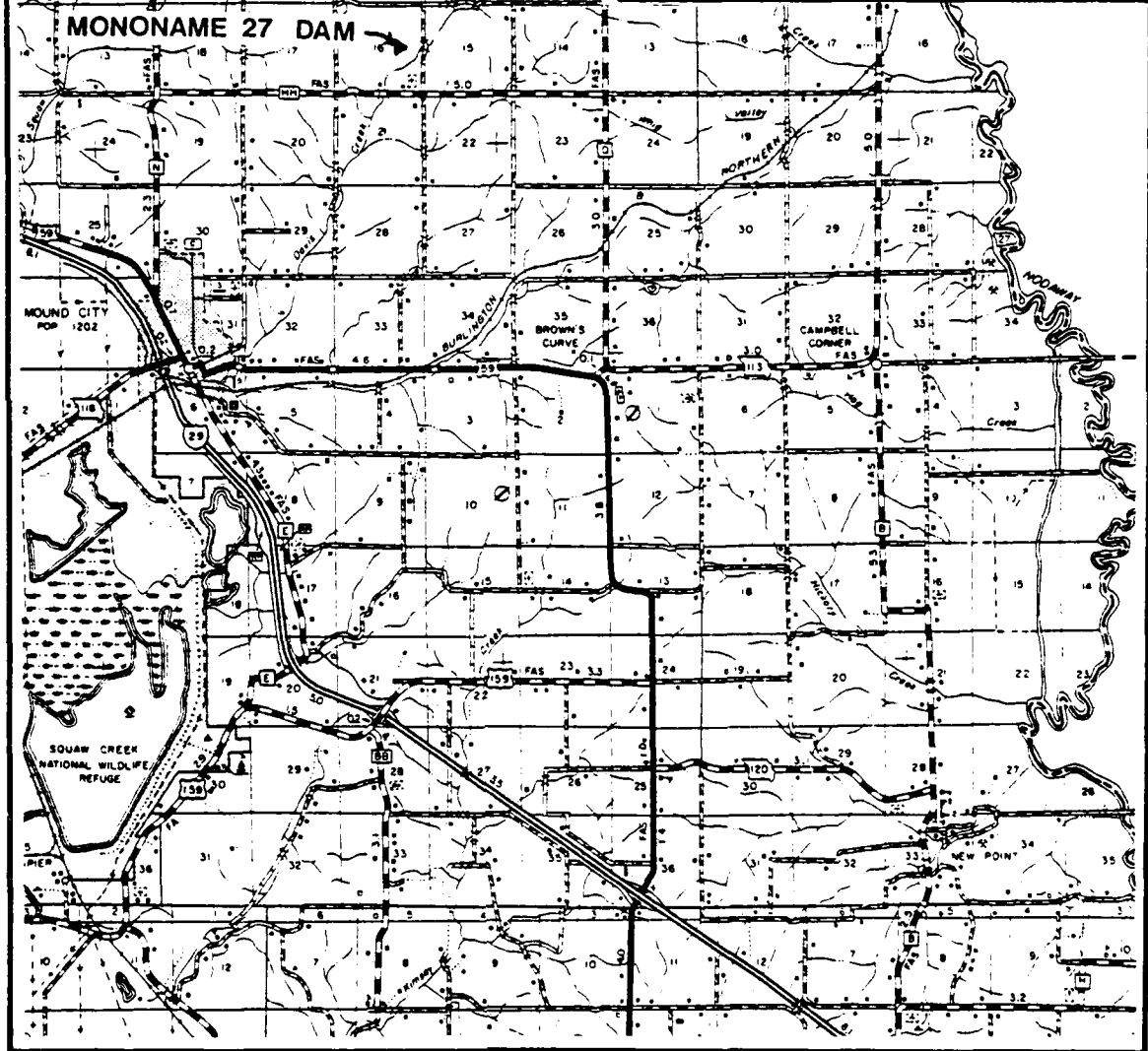
<p>Scale in feet</p> <p>2000 1000 0 2000 4000</p>	<p><b>N</b></p> <p><b>VICINITY TOPOGRAPHY</b>  <b>MONONAME 27 DAM</b>  <b>HOLT COUNTY, MISSOURI</b>  <b>MO. 10353</b>  <b>PLATE A-1</b></p>
---	---



**VICINITY MAP**

ID NO. MO 10353  
HOLT COUNTY

**MONONAME 27 DAM**

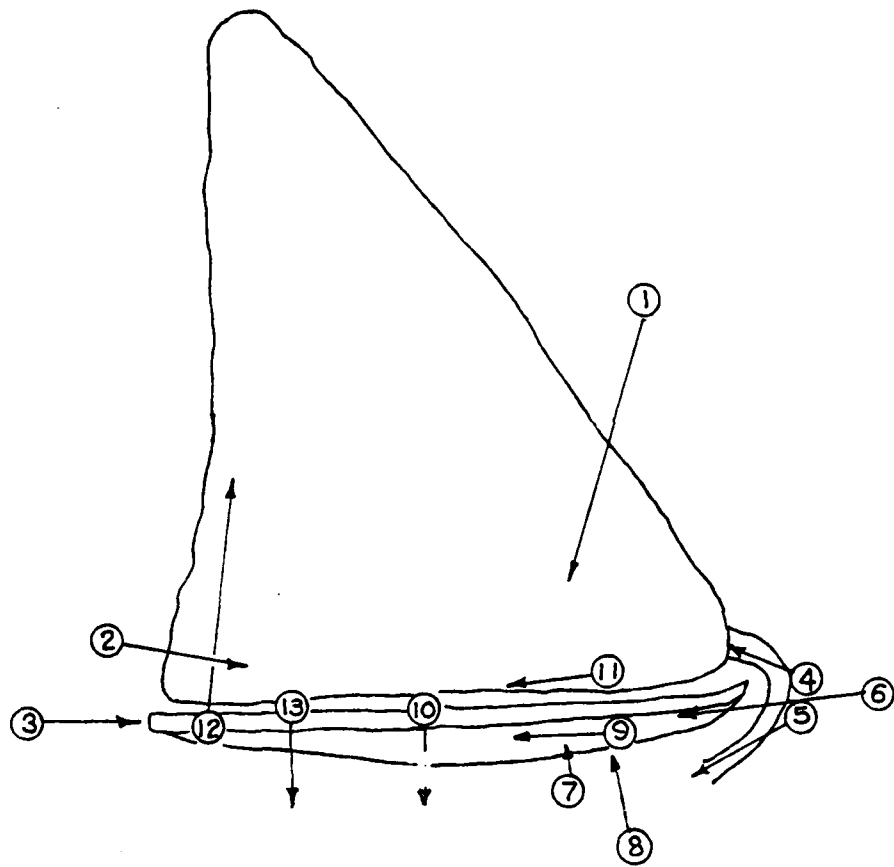
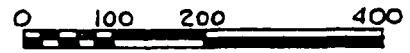


**LOCATION MAP**

PLATE A-2

APPENDIX B  
PHOTOGRAPHS

N



**PHOTO INDEX**

MONONAME 27 DAM

HOLT COUNTY, MISSOURI

MO. 10353

PLATE B-1



PHOTO NO. 2 - TAKEN FROM RIGHT SIDE SHOWING UPSTREAM FACE.



PHOTO NO. 3 - LOOKING ALONG CREST OF DAM FROM RIGHT SIDE.



PHOTO NO. 4 - LOOKING UPSTREAM ALONG EMERGENCY SPILLWAY.



PHOTO NO. 5 - LOOKING DOWNSTREAM ALONG EMERGENCY SPILLWAY.



PHOTO NO. 6 - DOWNSTREAM SLOPE TAKEN FROM LEFT END.



PHOTO NO. 7 - LARGE RODENT HOLE IN DOWNSTREAM FACE OF DAM.



PHOTO NO. 8 - SEEP AREA DOWNSTREAM OF TOE BETWEEN STA. 1+50  
AND STA. 3+00.

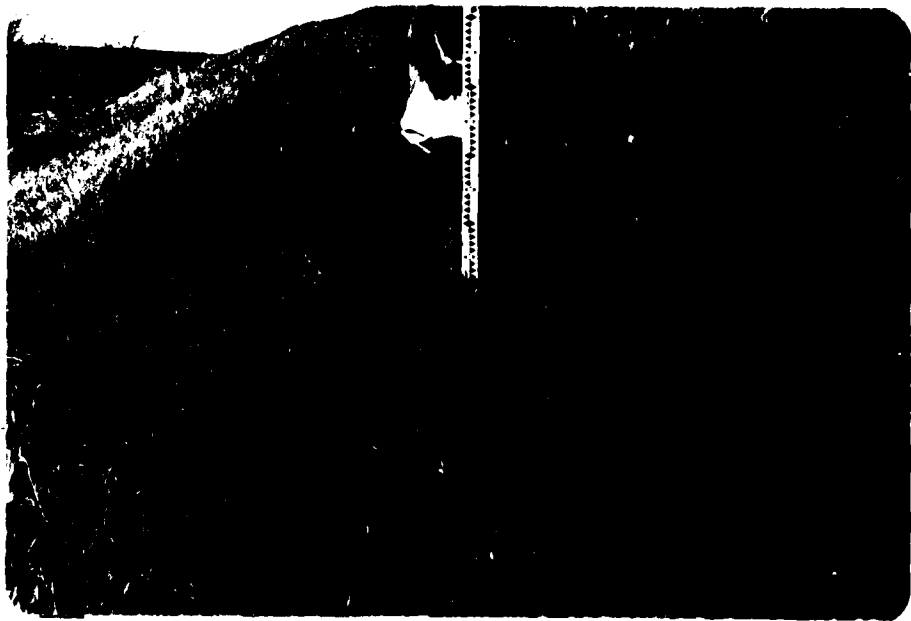


PHOTO NO. 9 - SLIP AREA AT STA. 4+00.



PHOTO NO. 10 - LOOKING DOWNSTREAM. SURVEY ROD AT SLIP AREA.

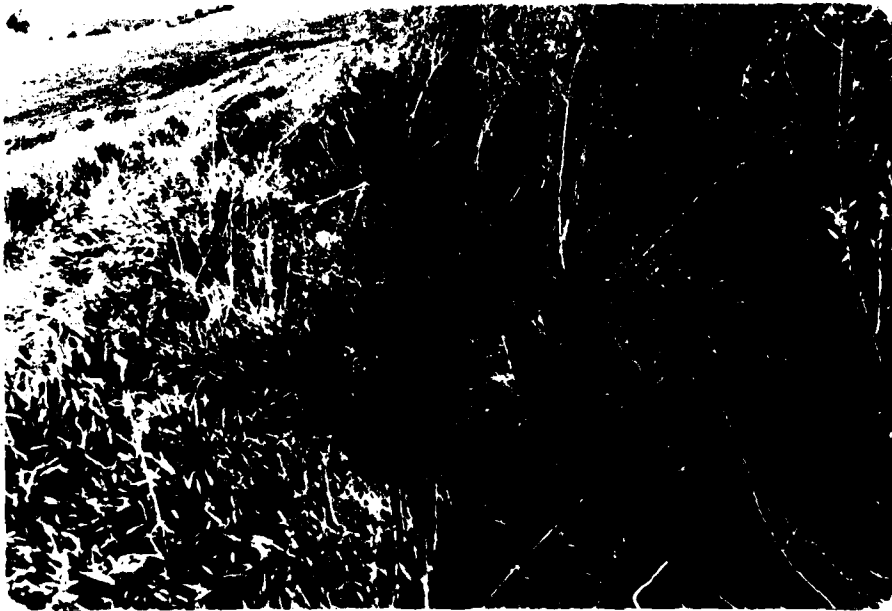


PHOTO NO. 11 - TAKEN FROM LEFT END SHOWING EROSION OF UPSTREAM FACE.

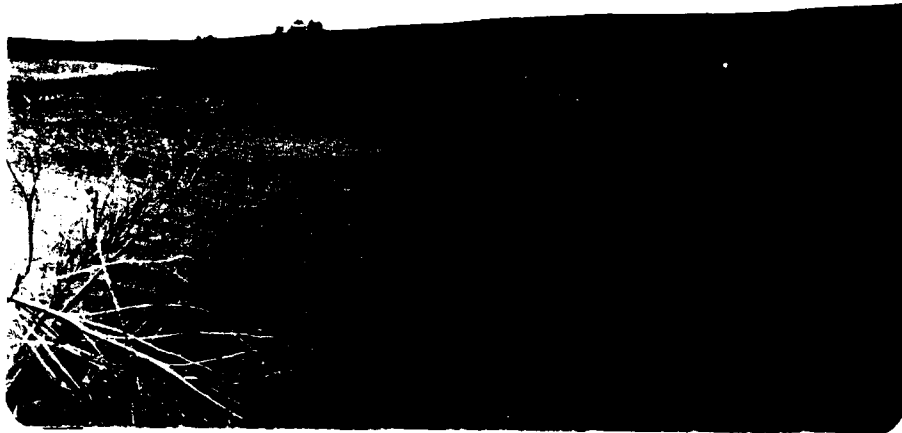
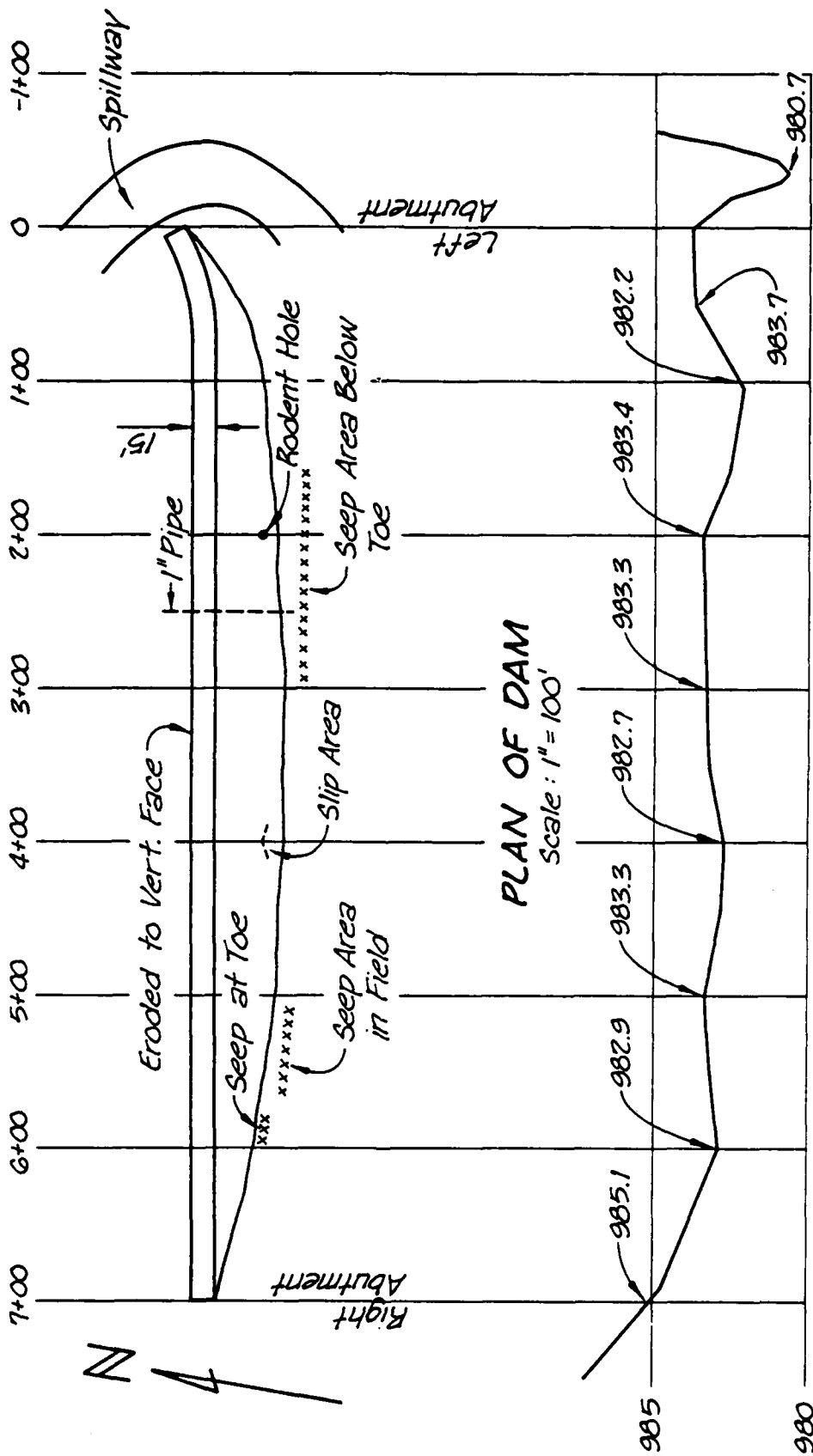


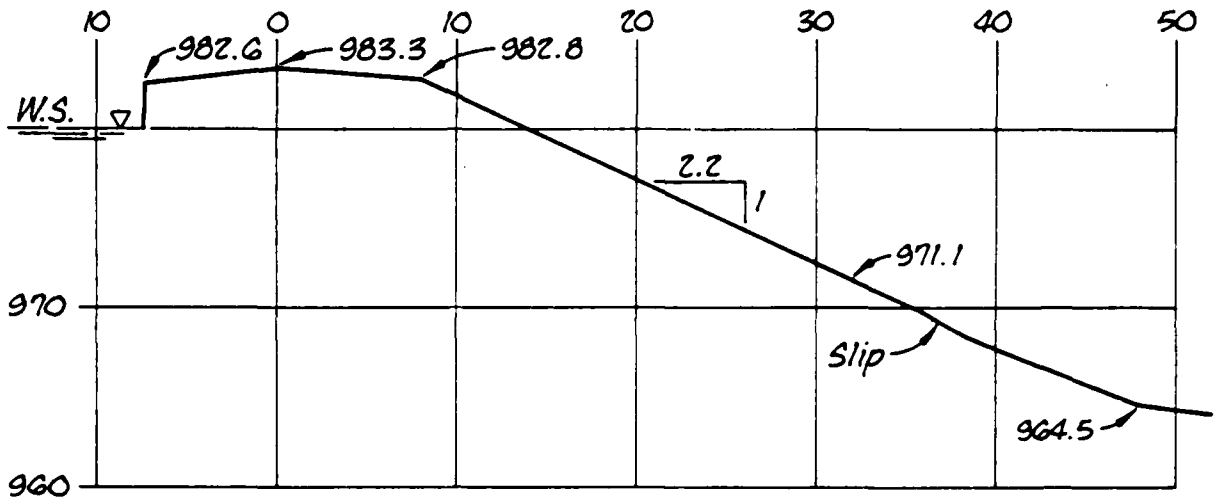
PHOTO NO. 12 - LOOKING UPSTREAM ACROSS RESERVOIR FROM  
STA. 6+00.



PHOTO NO. 13 - LOOKING DOWNSTREAM AT SEEP AREA IN FIELD  
BETWEEN STA. 5+00 AND STA. 5+60.

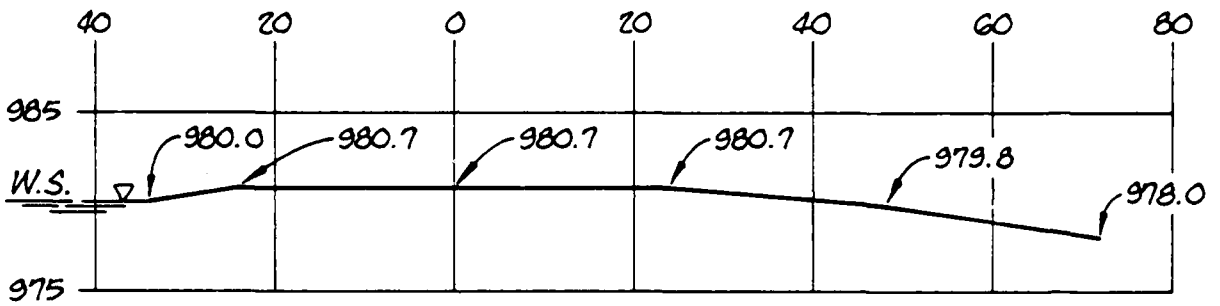
APPENDIX C  
PROJECT PLATES





**DAM SECTION AT STA. 3+50**

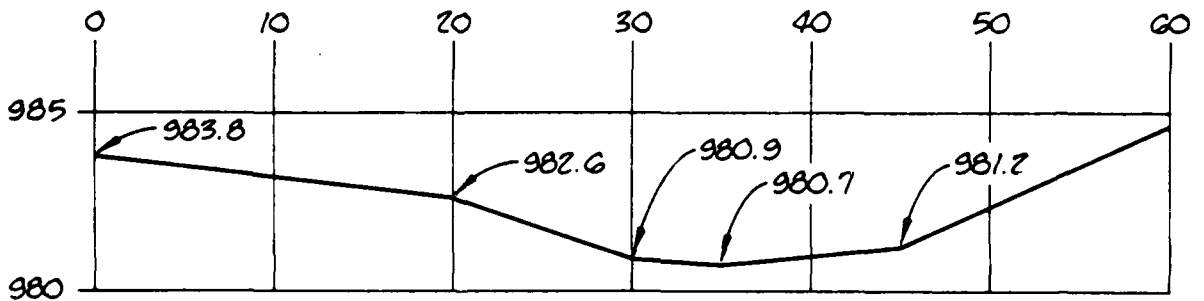
Scale: 1" = 10'



**PROFILE OF SPILLWAY**

Scale: 1" = 20' H.

1" = 10' V.



**SPILLWAY SECTION (E OF DAM)**

Scale: 1" = 10' H.

1" = 5' V.

APPENDIX D  
HYDRAULIC AND HYDROLOGIC DATA

## HYDROLOGIC COMPUTATIONS

1. The SCS dimensionless unit hydrograph and the systemized computer program HEC-1 (Dam Safety Version), July 1978, prepared by the Hydrologic Engineering Center, U.S. Corps of Engineers, Davis, California, were used to develop the inflow hydrographs.

a. Twenty-four hour, 100-year rainfall for the dam location was taken from the data for the rainfall station at Maryville, MO. as supplied by the St. Louis District, Corps of Engineers per their letter dated 6 March 1979. The twenty-four hour probable maximum precipitation was taken from the curves of Hydrometeorological Report No. 33 and current Corps of Engineers and St. Louis policy and guidance for hydraulics and hydrology.

b. Drainage area = 0.146 square miles (93.4 acres).

c. Time of concentration of runoff = 14 minutes (computed from "Kirpich" formula).

d. The antecedent storm conditions for the probable maximum precipitation were heavy rainfall and low temperatures which occurred on the previous 5 days (SCS AMC III). The antecedent storm conditions for the 100-year precipitation were an average of the conditions which have preceded the occurrence of the maximum annual flood on numerous watersheds (SCS AMC II). The initial pool elevation was assumed at the spillway crest.

e. The total twenty-four hour storm duration losses for the 100-year storm were 2.75 inches. The total losses for the PMF storm were 1.44 inches. These data are based on SCS runoff curve No. 89 and No. 76 for antecedent moisture conditions, SCS AMC III and AMC II respectively. The watershed is composed of primarily SCS soil group B and consists mostly of cropland planted partially on the contour.

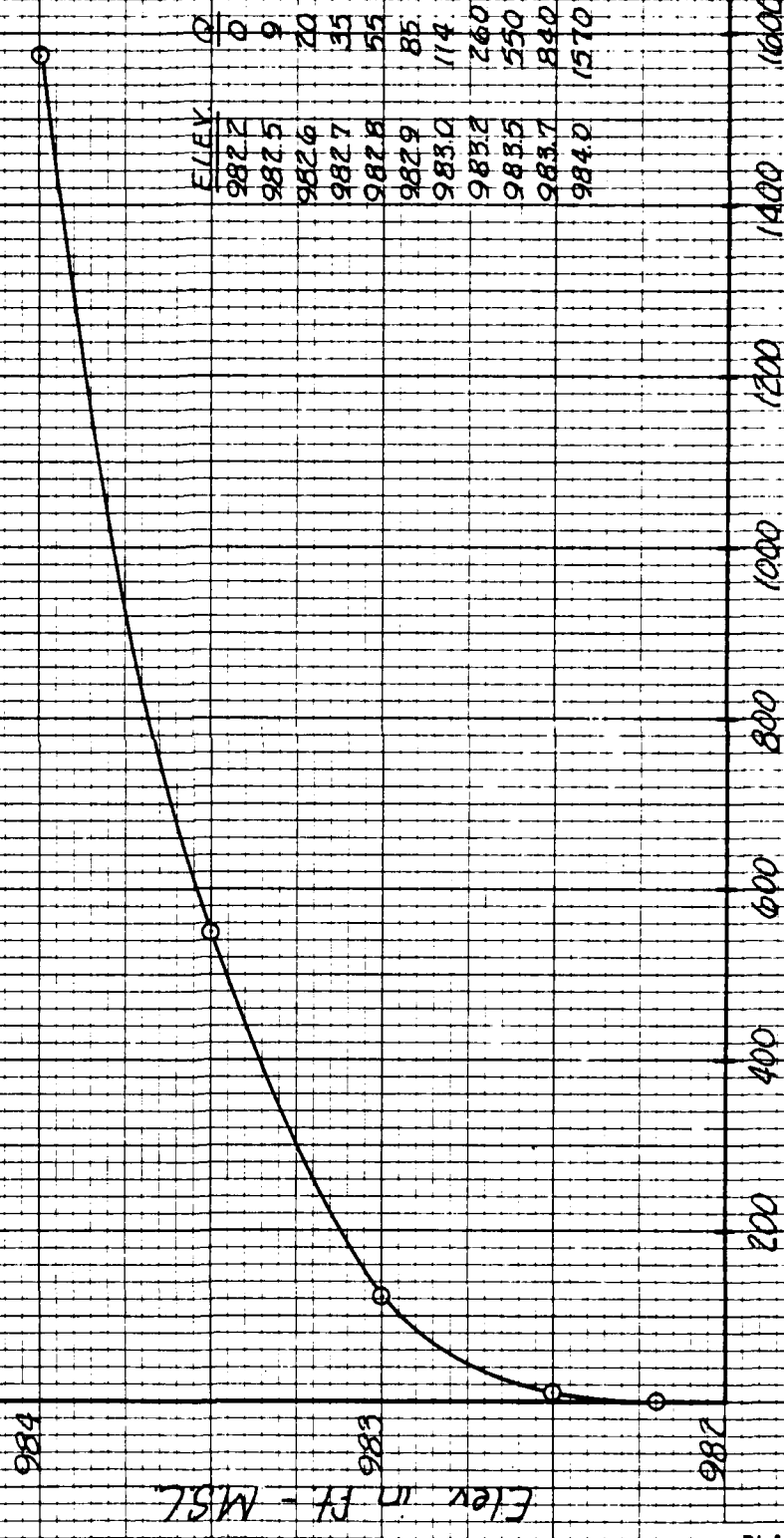
f. Average soil loss rates = 0.05 inch per hour approximately.

2. The discharge rating for the spillway was developed using the Corps of Engineers Surface Water Profile HEC-2 computer program and dimension measured in the field.

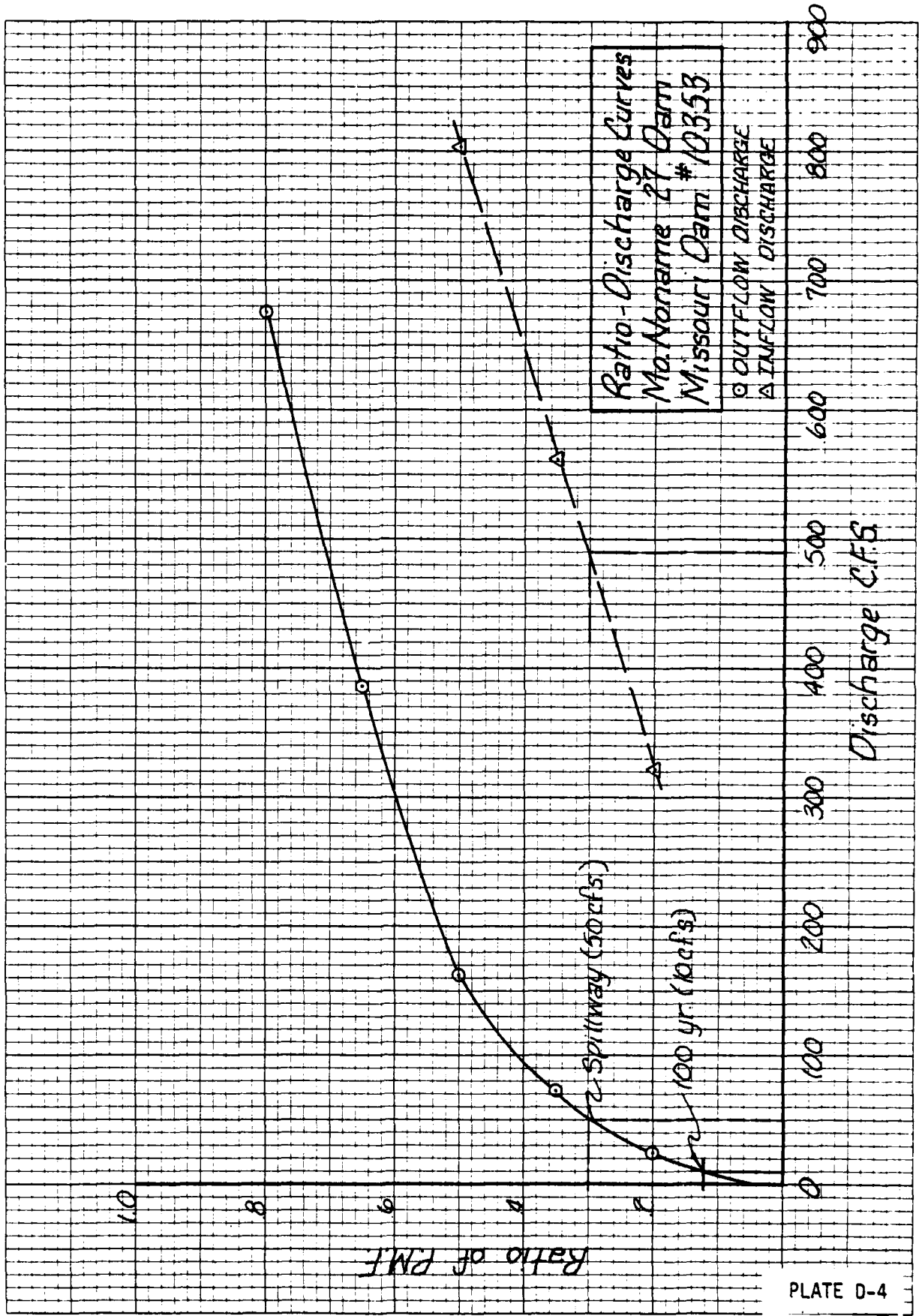
The flows over the dam crest were based on the broad-crested weir equation  $Q = CLH^{3/2}$ , where H is the head on the dam crest; the coefficient C, which varies with head, was taken from the USGS publication "TWRI, Book 3, Chapter 5, Measurement of Peak Discharge at Dams by Indirect Methods" (C values varied from 2.52 to 2.96).

3. Floods were routed through the reservoir using the HEC-1 (Dam Safety Version) program to determine the capacities of the spillway and dam embankment crest. The input and output data sheets for the one-half PMF are included in this appendix.

Over top Rating  
Mo. Name 27 Dam  
Missouri Dam #10353



ELEV.	Q
982.2	0
982.5	9
982.6	20
982.7	35
982.8	55
982.9	85
983.0	114
983.2	260
983.5	550
983.7	840
984.0	1570









	PEAK	6-HOUR	24-HOUR	72-HOUR	TOTAL VOLUME
CFS	803.	187.	58.	58.	16643.
CMS	23.	5.	2.	2.	471.
INCHES		11.92	14.73	14.73	14.73
MM		303.10	374.08	374.08	374.08
AC-FT		93.	115.	115.	115.
THOUS CU M		115.	141.	141.	141.

HYDROGRAPH AT STA00001 FOR PLAN 1, RTIO 4

	PEAK	6-HOUR	24-HOUR	72-HOUR	TOTAL VOLUME
CFS	1044.	243.	75.	75.	21635.
CMS	30.	7.	2.	2.	613.
INCHES		15.51	19.15	19.15	19.15
MM		394.62	486.30	486.30	486.30
AC-FT		121.	149.	149.	149.
THOUS CU M		149.	184.	184.	184.

HYDROGRAPH AT STA00001 FOR PLAN 1, RTIO 5

	PEAK	6-HOUR	24-HOUR	72-HOUR	TOTAL VOLUME
CFS	1285.	300.	92.	92.	26628.
CMS	36.	8.	3.	3.	154.
INCHES		19.09	23.56	23.56	23.56
MM		484.95	598.52	598.52	598.52
AC-FT		149.	183.	183.	183.
THOUS CU M		183.	226.	226.	226.

HYDROGRAPH AT STA00001 FOR PLAN 1, RTIO 6

	PEAK	6-HOUR	24-HOUR	72-HOUR	TOTAL VOLUME
CFS	1606.	375.	116.	116.	33285.
CMS	45.	11.	3.	3.	943.
INCHES		23.87	29.45	29.45	29.45
MM		606.19	748.15	748.15	748.15
AC-FT		186.	229.	229.	229.
THOUS CU M		229.	283.	283.	283.

\*\*\*\*\* HYDROGRAPH ROUTING \*\*\*\*\*

ROUTED FLOWS THRU 10353 RES.

ISTAO	ICOMP	IECON	ETAPE	JPLT	JPR1	INAME	ISTAGE	IAUTO
00002	1	0	0	2	0	1	0	0
GROSS	CLOSS	AVG	ROUTING DATA	ISPR	ISPR	ISPR	ISPR	ISPR
0.0	0.000	0.00	1 1 1	0	0	0	0	0
NSIPS	NSDOL	LAG	ANSKK	X	TSK	STURA	ISPRAT	
1	0	0	0.000	0.000	0.000	-981.	-1	





911VF\*

STATION030002

	0.	100.	200.	300.	400.	500.	600.	700.	800.	900.	0.	0.	0.	0.
.05 11														
.10 21														
.15 31														
.20 41														
.25 51														
.30 61														
.35 71														
.40 81														
.45 91														
.50 101														
.55 111														
1.00 121														
1.05 131														
1.10 141														
1.15 151														
1.20 161														
1.25 171														
1.30 181														
1.35 191														
1.40 201														
1.45 211														
1.50 221														
1.55 231														
2.00 241														
2.05 251														
2.10 261														
2.15 271														
2.20 281														
2.25 291														
2.30 301														
2.35 311														
2.40 321														
2.45 331														
2.50 341														
2.55 351														
3.00 361														
3.05 371														
3.10 381														
3.15 391														
3.20 401														
3.25 411														
3.30 421														
3.35 431														
3.40 441														
3.45 451														
3.50 461														
3.55 471														
4.00 481														
4.05 491														
4.10 501														
4.15 511														
4.20 521														
4.25 531														
4.30 541														
4.35 551														
4.40 561														

4.45 571  
4.50 581  
4.55 591  
5.00 601  
5.05 611  
5.10 621  
5.15 631  
5.20 641  
5.25 651  
5.30 661  
5.35 671  
5.40 681  
5.45 691  
5.50 701  
5.55 711  
6.00 721  
6.05 7301  
6.10 7401  
6.15 7501  
6.20 760  
6.25 770  
6.30 780  
6.35 790  
6.40 800  
6.45 810  
6.50 820  
6.55 830  
7.00 840  
7.05 850  
7.10 860  
7.15 870  
7.20 880  
7.25 890  
7.30 900  
7.35 910  
7.40 920  
7.45 930  
7.50 940  
7.55 950  
8.00 960  
8.05 970  
8.10 980  
8.15 990  
8.201000  
8.251010  
8.301020  
8.351030  
8.401040  
8.451050  
8.501060  
8.551070  
9.001080  
9.051090  
9.101100  
9.151110  
9.201120  
9.251130  
9.301140  
9.351150  
9.401160  
9.451170  
9.501180

9-551158  
10-001200  
10-051210  
10-101220  
10-151230  
10-201240  
10-251250  
10-301260  
10-351270  
10-401280  
10-451290  
10-501300  
10-551310  
11-001320  
11-051330  
11-101340  
11-151350  
11-201360  
11-251370  
11-301380  
11-351390  
11-401400  
11-451410  
11-501420  
11-551430  
12-001440  
12-051450  
12-101460  
12-151470  
12-201480  
12-251490  
12-301500  
12-351510  
12-401520  
12-451530  
12-501540  
12-551550  
13-001560  
13-051570  
13-101580  
13-151590  
13-201600  
13-251610  
13-301620  
13-351630  
13-401640  
13-451650  
13-501660  
13-551670  
14-001680  
14-051690  
14-101700  
14-151710  
14-201720  
14-251730  
14-301740  
14-351750  
14-401760  
14-451770  
14-501780  
14-551790  
15-001800



20.15243.1	0
20.20244.1	U
20.25245.1	U
20.30246.1	U
20.35247.1	0
20.40248.1	0
20.45249.1	U
20.50250.1	U
20.55251.1	0
21.00252.1	U
21.05253.1	U
21.10254.1	0
21.15255.1	U
21.20256.1	U
21.25257.1	0
21.30258.1	U
21.35259.1	U
21.40260.1	U
21.45261.1	U
21.50262.1	0
21.55263.1	U
22.00264.1	U
22.05265.1	U
22.10266.1	U
22.15267.1	0
22.20268.1	U
22.25269.1	U
22.30270.1	0
22.35271.1	U
22.40272.1	U
22.45273.1	0
22.50274.1	0
22.55275.1	U
23.00276.1	U
23.05277.1	0
23.10278.1	0
23.15279.1	0
23.20280.1	U
23.25281.1	0
23.30282.1	U
23.35283.1	U
23.40284.1	0
23.45285.1	0
23.50286.1	0
23.55287.1	U
0.00288.1	U



SUMMARY OF DAM SAFETY ANALYSIS

PLAN 1 .....	ELEVATION STORAGE		INITIAL VALUE		SPILLWAY CREST		TOP OF DAM	
	STORAGE	OUTFLOW	980.70	150.	980.70	150.	982.20	202.
			0.	0.	0.	0.	50.	50.
RATIO OF PMF	MAXIMUM RESERVOIR W.S. ELEV	MAXIMUM DEPTH OVER DAM	MAXIMUM STORAGE AC-FT	MAXIMUM OUTFLOW CFS	DURATION OVER TOP HOURS	TIME OF MAX OUTFLOW HOURS	TIME OF FAILURE HOURS	
.20	981.77	0.00	188.	26.	0.00	18.25	0.00	
.35	982.42	.22	210.	73.	4.00	18.08	0.00	
.50	982.82	.62	224.	162.	6.08	16.58	0.00	
.65	983.17	.97	236.	388.	7.42	16.08	0.00	
.80	983.42	1.22	245.	674.	8.50	16.00	0.00	
1.00	983.66	1.46	253.	1035.	9.58	15.92	0.00	

ATE  
ME