

AD-A110 321

AAI CORP COCKEYSVILLE MD

F/G 5/9

MINUTES OF PHYSICAL CONFIGURATION AUDIT FOR THE F-16 ELECTRONIC--ETC(U)

DEC 81

F33657-79-C-0820

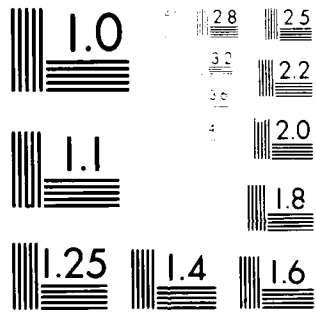
UNCLASSIFIED

AAI-ER-11613

NL

1 of 1
40 A
10 12

END
DATE
FILMED
02 82
DTIC

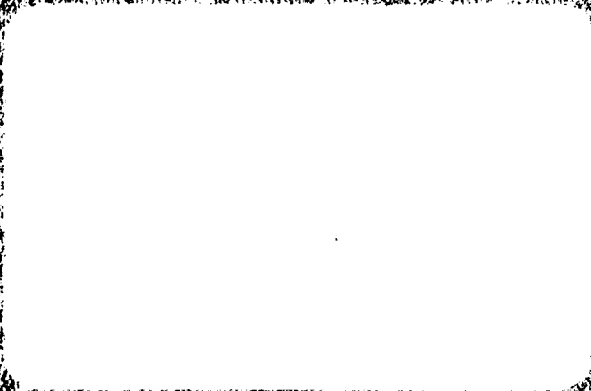


MICROCOPY RESOLUTION TEST CHART
NATIONAL BUREAU OF STANDARDS-1963-A

AD A110321

111

11



DTIC
SECRET

SECRET

SECRET

SECRET

SECRET

LEVEL II

①



DTIC
 FEB 01 1982
 E

MINUTES
 OF
 PHYSICAL CONFIGURATION AUDIT
 FOR THE
 F-16 ELECTRONIC WARFARE
 TRAINING DEVICE
 Report No. ER-11613

December 1981
 Date

Approved For	
DTIC DATA	<input checked="" type="checkbox"/>
DTIC TAB	<input type="checkbox"/>
Unannounced	<input type="checkbox"/>
Justification	
by <u>Letter or File</u>	
Distribution/	
Availability Codes	
Avail and/or	
Dist	Special
A	

Contract No. F33657-79-C-0820
 Sequence No. 00C
 Data Item No. DI-E-3118/M

R. Putnam Jr.
 R. Putnam
 AAI/Configuration Manager

119-303

11

Table of Contents

<u>Section</u>	<u>Page</u>
I. Discussion	1
II. Comments on PCA	2
III. List of Attendees	3
IV. In Plant PCA Plan	4
V. List of Assemblies to be Audited	5
VI. PCA Agenda	6
VII. Configuration Audit Discrepancy/Comment Reports	7

SECTION I

DISCUSSION

DISCUSSION

In accordance with the contract and the Configuration Management Plan a Physical Configuration Audit (PCA) of the F-16 Electronic Warfare Training Device was conducted by Aeronautical Systems Division personnel from 14 December thru 16 December 1981 at the facilities of AAI Corporation, Cockeysville, Maryland.

The purpose of this audit was to conduct a formal examination of the as-built version of the simulator against its technical engineering drawings in order to establish the simulator's Product Baseline.

The audit team was supplied with all documentation required to perform a complete PCA to the hardware consisting of hardware drawings, manufacturing orders, release sheets, master engineering data list and commercial manuals of the computer and CRT units.

Thirty discrepancy/comment reports were written. Each of these reports have been annotated with corrective action and are included as Section VII of these minutes.

SECTION II

COMMENTS ON PCA

The F-16 EWTD Physical Configuration Audit conducted 14-16 December 1981 was very well supported by the AAI team. The results showed very good documentation and configuration control. A conditional product baseline is established by this audit to be completed after correction of noted discrepancies and recheck of any items changed as a result of integration with the F-16 TFS. TAC DTT will recheck the AAI corrections and clear the checklists as they are presented. Documentation corrections may be cleared at AAI, but hardware corrections must be cleared in Houston with accompanying documentation to be supplied by AAI.



Peggy Jones
Co-Chairperson
F-16 EWTD PCA

We, TAC, conclude the F-16 EWTD Hardware PCA went extremely well. Good advance planning on the part of the USAF and AAI resulted in a smooth and comprehensive audit. We wish to thank the AAI audit team for their efforts.



Sgt. J. Higgins
F-16 DTT

SECTION III

LIST OF ATTENDEES

LIST OF ATTENDEES

<u>NAME</u>	<u>LOCATION/CODE</u>	<u>PHONE</u>
R. Putnam	AAI Corporation Configuration Management	(301) 628-8410
P. Jones	ASD/YWC Configuration Management	(513) 255-7296
P. Hufham	388 CRS/MACD	(801) 777-3085
Lt. Jay Trageser	ASD/YWL	(513) 255-7491
E. Rektorik	AAI Corporation Lead Engineer	(301) 628-3042
C. Barnes	AAI Corporation Design	(301) 628-3157
J. Higgins	388TFW/LGMD	(801) 777-3827
D. George	ASD/YWD	(513) 255-7288
D. Amsler	AAI Corporation Quality Assurance	(301) 628-3617

SECTION IV

IN PLANT PCA PLAN



DEPARTMENT OF THE AIR FORCE
 HEADQUARTERS AERONAUTICAL SYSTEMS DIVISION (AFSC)
 WRIGHT-PATTERSON AIR FORCE BASE, OHIO 45433

27 AUG 1981

PL TO: YWKB
 TN OF:

JA CT: F-16 EWTB Contract F33657-79-C-0820, Functional Configuration
 Audit/Physical Configuration Audit (FCA/PCA) Requirement

TO: AAI Corporation
 Attn: Mr. H.W. Winston
 P.O. Box 6767
 Baltimore, MD 21204

1. Paragraph B8062A.9 of the F-16 EWTB Statement of Work requires a PCA be conducted on the EWTB in accordance with MIL-STD-1521. This paragraph also states that the FCA/PCA shall be continued after shipment and installation and finished prior to Air Force acceptance.
2. This plan takes into consideration the proposed schedule submitted by AAI letter 130/CE-4053, 12 Aug 81, which will be responded to under a separate letter. During Phase I, an in-plant audit will be conducted immediately after USAF in-plant testing, to establish a conditional hardware baseline. It is estimated to take three to four days for this effort. The product baseline will be fully established during Phase II after integration and USAF testing. The FCA will be conducted after completion of USAF testing just prior to the final PCA. A configuration inspection of unit #2 will be required prior to tear down and shipment to the integration site.
3. Request AAI review the attached plans and indicate concurrence or nonconcurrence by letter to the Air Force no later than 21 Sep 81. Also provide start date for PCA.

Richard S. White
 RICHARD S. WHITE, Major, USAF
 Group Leader, Contracts Div. RECEIVED BY
 Deputy for Simulators

- 2 Atchs
 1. In-plant PCA Plan
 2. PCA Checklist

Cy to: DCASMA, Baltimore

DATE			
IDENT NO. SEP 2 1981			
ACTION		REF	
PREPARED	COPY	MATERIALS	COPY
HWW R		FOU R	
		WJG R	
		JL R	
FILE		O CE-4053	

IN PLANT PCA PLAN

SCOPE: The purpose of this audit is to conduct a formal examination of the as-built version of the simulator against its technical documentation in order to establish the simulator's basis.

TIME: After USAF in-plant testing and prior to tear down for shipment. During the audit, the trainer will have power "off" and therefore will be unavailable for any other activity.

REQUIREMENT: a. At the time of audit, for the selected assemblies AAI shall compile and make available the following information for ready references:

- . List of approved/pending (if any) changes to the designated assemblies.
- . List of shortage items.
- . Drawing Index - breaking out family tree with current revision level and outstanding engineering changes.
- . A copy of current corporate engineering change procedures.
- . A list of outstanding deviations/waivers.
- . Component cross reference list.
- . Current blueprints of those assemblies/detail parts, selected by ASD as those items to be audited. (To include inspection records)

b. AAI shall provide the following for the audit team:

- . Equipment needed for the audit, as required.
- . A large working bench for blueprint layout near the trainer.

PROCEDURES: a. A random selection of assemblies will be made using AAI's drawing tree. The QAR records, MRB action records, shortage slips, deviations/waivers and drawings versus hardware will be thoroughly inspected. Five working days prior to the scheduled audit, AAI will be notified which assemblies have been selected.

b. Upon start of the audit AAI will provide all of the required documentation.

c. The selected assemblies will be inspected after the documentation has been thoroughly audited.*

d. The PCA team will conduct a "walk through" review of the engineering release system for familiarization, and to observe how the configuration management system operates from initial design through release, including changes.

*Recommend utilizing the attached checklist/DR form (modified as/if required) for recording audit information.

POST PCA REQUIREMENTS - Upon completion of the PCA, AAI shall prepare and distribute minutes in accordance with DI-E-3118 documenting the audit. These minutes shall include, but not be limited to:

- . Overview
- . List of assemblies audited
- . Team members
- . Findings (copies of checklist/DR Form)
- . Follow-up action

LIST NO. _____

PCA CHECKLIST

TYPE: GA, SCHE. PL, ETC.

ECN

NO.:

SERIAL NO.:

REJECT

ATURE:

YES

NO

MAJOR

MINOR

IE TATION

Drawing Released

Approved Changes Referenced on Dwg (ECN)

Approved Changes Incorporated in Dwg (ECN)

EC TION VERIFICATION

Latest Revision Status

ECNs Incorporated

Other

WARE AUDIT

Part Marking in Accordance with Dwg Requirements

All Materials/Parts Required by Dwg

Incorporated

Dimensions in Accordance with Drawing

Approved Changes Incorporated ECN/DCNs

Other

DISCREPANCIES/COMMENTS

DOCUMENTATION

HARDWARE

AUDITED BY:

DATE:

RECAPITULATIVE ACTION/COMMENTS

NAME:

DATE:

CHECK ACTION/DISPOSITION

SECTION V

LIST OF ASSEMBLIES
TO BE AUDITED

ATTACHMENT 1

	<u>Part Number</u>	<u>Name</u>
1.	40133-40001	Guide, Card Extractor
2.	56919-47205	Right Angle Extender Card
3.	56919-40006	Panel Assembly
4.	56919-49420	Cable, Instructor Azimuth
5.	56919-49410	Cable, Cockpit Azimuth
6.	56919-40002	Overheat Sensor
7.	56919-40010	Station Assembly
8.	56919-40100	Primary TDU Indicator Assembly
9.	56919-40110	TDU Ind, Aux. Cont.
10.	56919-40120	Chaff/Flare Cont. Panel
11.	56919-40130	Pod Control Panel C7854
12.	56919-47005	Display Symbol Processor
13.	56919-40018	Interface Panel
14.	LXS-D-5-OV-R	45VDC Power Supply
15.	LXS-B-24	425VDC Power Supply
16.	LXD-3-152-R	415VDC Power Supply
17.	56919-49400	MD DMA I/O Interface Cable
18.	56919-99007	Razetime 1570 CRT
19.	56919-90001	F-16 EXT Computer Spec.
20.	56919-90001	MD IQ/S Computer
21.	56919-90001-19	MD 511 Hawk Disc
22.	IP1310/ALX	Azimuth Indicator
23.	56919-90001-13	MD309 Shugart Floppy Disc
24.	56919-40030	POC and Overheat Sensor
25.	56919-40003	P.O.C. Sensor
26.	56919-40020	QTR Motherboard
27.	40133-47011-1	Bi-Directional Diff. Driver
28.	40133-47003	Expandable Decoder
29.	40133-47001	NORN I/O Control
30.	56919-47002	Triple 16-bit Register
31.	56919-47005	Display Symbol Processor
32.	56919-47006	Symbol Generator
33.	56919-47201	69 Display Driver
34.	40133-47208	PPG
35.	56919-47004	PPG Pulse Measurement
36.	56919-47009	Special Effects Audio
37.	3VH00/1CND5	Connector
38.	SN60KRMPI-062	Solder
39.	M16878-1-22KT	Wire
40.	MS27737-236	Switch, Toggle
41.	M19500/521-02	Light, Diode
42.	17541-12	Strain Relief
43.	M28731/20-0001	Contact
44.	M23053/5-CL1-0750	Tubing Heat Shrink
45.	M23053/5-CL1-0750	Tubing Heat Shrink
46.	JANIX13614	Diode Semi-Conductor
47.	38T66	Terminal Board
48.	531900F10606-2	Trace
49.	D1-4A	Smoke Detector
50.	MS35400-6	Connector

ATTACHMENT 1
(Continued)

	<u>Part Number</u>	<u>Name</u>
51.	F101-105V34	Fuse
52.	MS21266-28	Grommet
53.	JAN251485	RESISTOR
54.	03-30	Display
55.	M27/166-05	XFORMER
56.	MS21266-28	Grommet
57.	56-19-84120	Wire Data List
58.	MS2129AW024	Sleeving Insulation
59.	2003600	Panel, Edge Lit
60.	CF04WTS1762-2	Indicator Lamp
61.	702-3728-01-03-00	Header
62.	1062	Status
63.	1001	Arithmetic
64.	1002	Registers
65.	1007	Decoding
66.	1006	OR Logic
67.	1167	4K PROM
68.	1075	Micro Addressing
69.	1120	Time Control
70.	1058	Interrupt Control
71.	1008	Interrupt Register
72.	1127	Transceiver Control
73.	1119	Transceiver Address
74.	1125	Transceiver Data
75.	1166	Programmable Clock
76.	1040	Paging
77.	1121	Panel Control
78.	1114	Panel Transceiver
79.	1115	Lamp Register
80.	1096	DMA Address
81.	1093	Branch Transceiver
82.	1101	Branch Control
83.	1132	32 M RAM
84.	1095	Terminal Buffer
85.	1170	External Interrupt
86.	1111	Floppy Disc Control
87.	1118	Floppy Disc Data
88.	1155	Bus Control
89.	1126	Cache Memory
90.	1172	DMA Interface
91.	1168	Differential DMA Adapter
92.	1013	Device Register
93.	1129	DMA Register
94.	1036	Disc Transceiver
95.	1037	Disc Control
96.	1039	Disc Timing
97.	1107	Disc Sequence
98.	1100	Line Printer Interface
99.	1015	Device Register
100.	1123	Portec M Control A
101.	1124	Portec M Control B
102.	1125	Portec M Control C

ATTACHMENT 2 AIRWORK REQUIREMENTS

1. 40133-47001
2. 40133-47003
3. 40133-47011-1
4. 40133-47208
5. 56919-47002
6. 56919-47004
7. 56919-47005
8. 56919-47006
9. 56919-47009
10. 56919-47201

SECTION VI

PCA AGENDA

Physical Configuration Audit Agenda
F-16 Electronic Warfare Training Device

Audit Date: 14 - 16 December 1981
Location: AAI Corporation (F-16 Lab "N" Bldg.)
Security Clearance: Unclassified
Contract: F33657-79-C-0820
Equipment: F-16 EWTD

Scope/Purpose:

A Physical Configuration Audit (PCA) will be conducted on the F-16 Device to insure accuracy of the identifying documentation and to establish a final product baseline.

Previous Reviews:

Preliminary Design Review 24 June 1980
Critical Design Review 6 - 9 April 1981

Guidance Documentation for PCA:

DOD-STD-480 Configuration Control - Engineering Changes, Deviations and Waivers - 12 April 1978

MIL-STD-482 Configuration Status Accounting Data - 01 April 1974

MIL-STD-483 (USAF) Configuration Management Practices for Systems, Equipment, Munitions, and Computer Programs - 31 December 1970

MIL-STD-490 Specification Practices, with Change Dated 01 February 1969
30 October 1968

MIL-STD-1521A Technical Reviews and Audits for Systems, Equipment, and Computer Programs (Appendix F) - 29 September 1978

Detail Audit Itinerary

14 December 1981

0800

Introduction of Attendees
Review of Equipment and Program Status
Audit Team Organization and Assignment of Responsibilities
Review of Drawings/Lists, Specifications, Etc.

1200

Lunch

1300

Audit Teams Continue Review

15 December 1981 Through 16 December if Required

0800

Meeting of Audit Teams
Review of Documentation Continued

1200

Lunch

1300

Audit Teams Continue Review

16 December 1981 or Final Day

0800

1. Critique Audit
 - a. Identify Discrepancies and Corrective Actions
 - b. Prepare Minutes by Recording Audit Results/Discrepancies
 - c. Resolve Audit Discrepancies Recorded
 - d. Establish Production Baseline for F-16 EWTD
2. Final Review and Audit
 - a. Prepare, Review and Sign minutes

SECTION VII

CONFIGURATION AUDIT
DISCREPANCY/COMMENT
REPORTS

The following assemblies in the NORD-10 computer were checked for revision levels, part numbers, and location in the computer. In the abbreviated check, no discrepancies were found.

<u>P/N</u>	<u>Name</u>
1062	Status
1001	Arithmetic
1002	Registers
1007	Decoding
1006	OR Logic
1167	4K Prom
1075	Micro Addressing
1120	Time Control
1058	Interrupt Control
1008	Interrupt Register
1127	Transceiver Control
1119	Transceiver Address
1125	Transceiver Data
1121	Panel Control
1114	Panel Transceiver
1115	Lamp Register
1096	DMA Address
1093	Branch Transceiver
1101	Branch Control
1132	32 KW RAM
1095	Terminal Buffer
1170	External Interrupt
1111	Floppy Disc Control
1118	Floppy Disc Data
1155	Bus Control
1126	Cache Memory
1172	DMA Interface
1168	Differential DMA Adapter
1036	Disc Transceiver
1037	Disc Control
1039	Disc Timing

CHECKLIST NO. 1

PCA CHECKLIST

DRAWING TYPE: GA, SCHE, PL, ETC.

REVISION

DRAWING NO.: 56919-90001-40 ^{SHEET 29} REV C

SERIAL NO.:

REJECT

NOMENCLATURE:

YES

NO

MAJOR

MINOR

DOCUMENTATION

- 1. Drawing Released
- 2. Approved Changes Referenced on Dwg (ECN)
- 3. Approved Changes Incorporated in Dwg (ECN)

INSPECTION VERIFICATION

- 4. To Latest Revision Status
- 5. ECNs Incorporated
- 6. Other

HARDWARE AUDIT

- 7. Part Marking in Accordance with Dwg Requirements
- 8. All Materials/Parts Required by Dwg Incorporated
- 9. Dimensions in Accordance with Drawing
- 10. Approved Changes Incorporated ECN/DCNs
- 11. Other

DISCREPANCIES/COMMENTS

DOCUMENTATION

Documentation and Hardware of slot numbers and cards do not compare from slot 9 down to slot 19.

HARDWARE

SLOT 9 - 1166 C	SLOT 14 - 1170 C
" 10 - 1166 C	" 15 - 1111 D
" 11 - 1155 B	" 16 - 1118 D
" 12 - 1172 E	" 17 - 1095 H
" 13 - 1172 E	" 18 - BLANK

AUDITED BY: PHD

DATE: 14-12-81

CORRECTIVE ACTION/COMMENTS

AAI DWG WILL BE CORRECTED TO REFLECT PROPER SLOT ARRANGEMENT.

NAME: RPultrani

DATE: 12-16-81

RECHECK ACTION/DISPOSITION

Checked J. Howard

CHECKLIST NO. IA

PCA CHECKLIST

DRAWING TYPE: GA, SCHE. PL, ETC.

REVISION

DRAWING NO.: 56919-9001-40 Rev C ^{Sheet 30}

SERIAL NO.:

REJECT

NOMENCLATURE:

YES

NO

MAJOR

MINOR

DOCUMENTATION

- 1. Drawing Released
- 2. Approved Changes Referenced on Dwg (ECN)
- 3. Approved Changes Incorporated in Dwg (ECN)

INSPECTION VERIFICATION

- 4. To Latest Revision Status
- 5. ECNs Incorporated
- 6. Other

HARDWARE AUDIT

- 7. Part Marking in Accordance with Dwg Requirements
- 8. All Materials/Parts Required by Dwg Incorporated
- 9. Dimensions in Accordance with Drawing
- 10. Approved Changes Incorporated ECN/DCNs
- 11. Other

DISCREPANCIES/COMMENTS

DOCUMENTATION

Documentation and Hardware of slot numbers and cards do not compare. Norsk Manuals indicate correct slot position / PAI drawing does not

HARDWARE

Hardware has one additional DIFF DMA Adapter PN 1168 not indicated in drawings

AUDITED BY: *PAK*

DATE: *14-12-81*

CORRECTIVE ACTION/COMMENTS

THE CARD WILL BE REMOVED FROM THE ABOVE SLOT.

NAME: *Plutman*

DATE: *12.16.81*

RECHECK ACTION/DISPOSITION

NAME:

DATE:

REVISION NO. 2

PCA CHECKLIST

DRAWING TYPE: CA, SCHE. PL, ETC.

REVISION

DRAWING NO.:

SERIAL NO.:

REJECT

DESCRIPTION:

PCBING

P/O 1040

Rev V

YES

NO

MAJOR

MINOR

DOCUMENTATION

1. Drawing Released

2. Approved Changes Referenced on Dwg (ECN)

3. Approved Changes Incorporated in Dwg (ECN)

INSPECTION VERIFICATION

4. To Latest Revision Status

5. ECNs Incorporated

6. Other

HARDWARE AUDIT

7. Part Marking in Accordance with Dwg Requirements

8. All Materials/Parts Required by Dwg Incorporated

9. Dimensions in Accordance with Drawing

10. Approved Changes Incorporated ECN/DCNs

11. Other

DISCREPANCIES/COMMENTS

DOCUMENTATION

PCBING SL 0 14 P/O 1040 REV V

HARDWARE

PCB WR006 REV LEVEL

PCBING SL 0 14 P/O 1040 REV IV

AUDITED BY:

Jet

DATE: 17 DEC 81

CORRECTIVE ACTION/COMMENTS

AAI WILL INVESTIGATE FOR MOST CURRENT REVISION LEVEL.

NAME:

R Palomares

DATE:

12.16.81

RECHECK ACTION/DISPOSITION

NAME:

DATE:

CHECKLIST NO. 3

PCA CHECKLIST

DRAWING TYPE: GA, SCHE. PL, ETC.

REVISION

DRAWING NO.:

SERIAL NO.:

REJECT

NOMENCLATURE:

RTC ^{SLOT 4} Programmable

PIU 1166 Rev C

YES

NO

MAJOR

MINOR

DOCUMENTATION

- 1. Drawing Released
- 2. Approved Changes Referenced on Dwg (ECN)
- 3. Approved Changes Incorporated in Dwg (ECN)

INSPECTION VERIFICATION

- 4. To Latest Revision Status
- 5. ECNs Incorporated
- 6. Other

HARDWARE AUDIT

- 7. Part Marking in Accordance with Dwg Requirements
- 8. All Materials/Parts Required by Dwg Incorporated
- 9. Dimensions in Accordance with Drawing
- 10. Approved Changes Incorporated ECN/DCNs
- 11. Other

DISCREPANCIES/COMMENTS

DOCUMENTATION

SLOT 4 Doc. shows

RTC 1210 Rev E.

WFO by PIU AND REV
HARDWARE shows

HARDWARE

RTC Programmable PIU 1166 Rev C

Comments.

Work charged to PIU 1166 Rev C no documentation for changes.

AUDITED BY:

Jet

DATE: 14 Dec 81

CORRECTIVE ACTION/COMMENTS

NORSK DOCUMENTATION WILL BE UPDATE FOR THE PIU 1166.

NAME:

R. Patram

DATE: 12.16.81

RECHECK ACTION/DISPOSITION

CHECKLIST NO. 3A

PCA CHECKLIST

DRAWING TYPE: GA, SCHE. PL, ETC.

REVISION

DRAWING NO.:

SERIAL NO.:

REJECT

NOMENCLATURE:

5106 IC (Failed) R/L H/G Rev
R/L Programmable

YES

NO

MAJOR

MINOR

DOCUMENTATION

- 1. Drawing Released
- 2. Approved Changes Referenced on Dwg (ECN)
- 3. Approved Changes Incorporated in Dwg (ECN)

INSPECTION VERIFICATION

- 4. To Latest Revision Status
- 5. ECNs Incorporated
- 6. Other

HARDWARE AUDIT

- 7. Part Marking in Accordance with Dwg Requirements
- 8. All Materials/Parts Required by Dwg Incorporated
- 9. Dimensions in Accordance with Drawing
- 10. Approved Changes Incorporated ECN/DCNs
- 11. Other

DISCREPANCIES/COMMENTS

DOCUMENTATION

Proper P/N and Rev level
Beard has tape indicating failed item.

HARDWARE

AUDITED BY: *Jet*

DATE: *14 Dec 81*

CORRECTIVE ACTION/COMMENTS

THIS WAS CHECKED AND FOUND TO BE IN GOOD ORDER. NO ACTION REQ'D.

NAME: *R. Paterson*

DATE: *12.16.81*

RECHECK ACTION/DISPOSITION

Closed

DATE: *12-11-81*

Peash Jones

DATE: *12-11-81*

CHECKLIST NO. 4

PCA CHECKLIST

DRAWING TYPE: GA, SCHE, PL, ETC.	GA	PL						
REVISION	B	A						

DRAWING NO.: 40133-47003 SERIAL NO.: 0001 REJECT

NOMENCLATURE: <u>ENCLOSURE DRAWER</u>	YES	NO	MAJOR	MINOR
---------------------------------------	-----	----	-------	-------

DOCUMENTATION

- | | | | | |
|---|---|--|--|--|
| 1. Drawing Released | ✓ | | | |
| 2. Approved Changes Referenced on Dwg (ECN) | ✓ | | | |
| 3. Approved Changes Incorporated in Dwg (ECN) | ✓ | | | |

INSPECTION VERIFICATION

- | | | | | |
|------------------------------|---|--|--|--|
| 4. To Latest Revision Status | ✓ | | | |
| 5. ECNs Incorporated | ✓ | | | |
| 6. Other | | | | |

HARDWARE AUDIT

- | | | | | |
|---|---|--|--|--|
| 7. Part Marking in Accordance with Dwg Requirements | ✓ | | | |
| 8. All Materials/Parts Required by Dwg Incorporated | ✓ | | | |
| 9. Dimensions in Accordance with Drawing | ✓ | | | |
| 10. Approved Changes Incorporated ECN/DCNs | ✓ | | | |
| 11. Other | | | | |

<u>DISCREPANCIES/COMMENTS</u>	<u>DOCUMENTATION</u>
-------------------------------	----------------------

<u>HARDWARE</u>

AUDITED BY: 7 E / P DATE:

CORRECTIVE ACTION/COMMENTS

NAME: DATE:

RECHECK ACTION/DISPOSITION

NAME: DATE:

HECKLIST NO. 5

PCA CHECKLIST

DRAWING TYPE: GA, SCHE, PL, ETC.

GA PL

REVISION

B D

DRAWING NO.: 56919-47004

SERIAL NO.: 1597

REJECT

DESCRIPTION: PPG PULSE MEASUREMENT

YES NO MAJOR MINOR

DOCUMENTATION

- 1. Drawing Released ✓
- 2. Approved Changes Referenced on Dwg (ECN) ✓
- 3. Approved Changes Incorporated in Dwg (ECN) ✓

INSPECTION VERIFICATION

- 1. To Latest Revision Status ✓
- 2. ECNs Incorporated ✓
- 3. Other

HARDWARE AUDIT

- 7. Part Marking in Accordance with Dwg Requirements ✓
- 8. All Materials/Parts Required by Dwg Incorporated ✓
- 9. Dimensions in Accordance with Drawing ✓
- 10. Approved Changes Incorporated ECN/DCNs ✓
- 11. Other

DISCREPANCIES/COMMENTS

DOCUMENTATION

HARDWARE

AUDITED BY:

DG P J

DATE:

CORRECTIVE ACTION/COMMENTS

NAME:

DATE:

RECHECK ACTION/DISPOSITION

NAME:

DATE:

CHECKLIST NO. <u>6</u>		PCA CHECKLIST			
DRAWING TYPE: GA, SCHE, PL, ETC.		PL	GA		
REVISION		L	G		
DRAWING NO.: <u>56919-47005</u>		SERIAL NO.: <u>0001</u>		REJECT	
NOMENCLATURE: <u>DISPLAY SYMBOL PROCESSOR</u>		YES	NO	MAJOR	MINOR
DOCUMENTATION					
1. Drawing Released		PL - RELEASED TO REV C			
2. Approved Changes Referenced on Dwg (ECN)		✓			
3. Approved Changes Incorporated in Dwg (ECN)		✓			
INSPECTION VERIFICATION					
1. To Latest Revision Status					
3. ECNs Incorporated					
5. Other		✓ - NO INSPECTION REQUIRED			
HARDWARE AUDIT					
7. Part Marking in Accordance with Dwg Requirements			✓		
8. All Materials/Parts Required by Dwg Incorporated		✓			
9. Dimensions in Accordance with Drawing		✓			
10. Approved Changes Incorporated ECN/DCNs		✓			
11. Other					
DISCREPANCIES/COMMENTS		DOCUMENTATION (Reference Designation # 147 ITEM 14)			
1. PARTS LIST CALLS FOR M38510/00205806 0-1		INSTALLED IS THIS			
2. U127-PL-M38510/0170/008 MICROCIRCUIT - S18 SOCKET					
3. U137-PL-SN05428335 - INSTALLED SNC 54335					
HARDWARE					
AUDITED BY: <u>D.P.L.</u>		DATE: <u>12/14/81</u>			
CORRECTIVE ACTION/COMMENTS		1. CORRECT PART WILL BE ADDED TO ASSY.			
		2. DWG WILL BE CORRECTED.			
		3. CORRECT PART WILL BE INSTALLED ON ASSY U137.			
NAME: <u>R. Putnam</u>		DATE: <u>12-16-81</u>			
RECHECK ACTION/DISPOSITION					
Drawing corrected 12/16/81					
NAME:		DATE:			

WORKST NO. 1

PCA CHECKLIST

DRAWING TYPE: GA, SCHE, PL, ETC.

GA

REVISION

D

DRAWING NO.: 56919-4700

SERIAL NO.: 0001

REJECT

DESCRIPTION: WARD I/O CONTROL

YES

NO

MAJOR

MINOR

DOCUMENTATION

Drawing Released

✓

Approved Changes Referenced on Dwg (ECN)

✓

Approved Changes Incorporated in Dwg (ECN)

✓

SPECIFICATION VERIFICATION

To Latest Revision Status

✓

ECNs Incorporated

✓

Other

HARDWARE AUDIT

Part Marking in Accordance with Dwg Requirements

✓

All Materials/Parts Required by Dwg Incorporated

✓

Dimensions in Accordance with Drawing

✓

Approved Changes Incorporated ECN/DCNs

✓

Other

DISCREPANCIES/COMMENTS

DOCUMENTATION

HARDWARE

QUALITY

THE NUT STRAP HOLDING THE SCREW BETWEEN U141 AND U142 IS STRIPPED OUT AT THAT SCREW LOCATION.

AUDITED BY: ARR

DATE: 12-16-81

CORRECTIVE ACTION/COMMENTS

STRAP.

MFG WILL REPLACE THE ABOVE NUT

NAME: R.P. Thomas

DATE: 12-16-81

CHECK ACTION/DISPOSITION

NAME:

DATE:

ECKLIST NO. 8

PCA CHECKLIST

DRAWING TYPE: GA, SCHE, PL, ETC.

<u>51</u>	<u>M</u>								
-----------	----------	--	--	--	--	--	--	--	--

VISION

DRAWING NO.: 40133-47208

SERIAL NO.: 1595

REJECT

DESCRIPTION: Programmable Pulse Generator

YES

NO

MAJOR

MINOR

DOCUMENTATION

Drawing Released

✓

Approved Changes Referenced on Dwg (ECN)

✓

Approved Changes Incorporated in Dwg (ECN)

✓

SPECIFICATION VERIFICATION

To Latest Revision Status

✓

ECNs Incorporated

✓

Other

HARDWARE AUDIT

Part Marking in Accordance with Dwg Requirements

✓

All Materials/Parts Required by Dwg Incorporated

✓

Dimensions in Accordance with Drawing

✓

Approved Changes Incorporated ECN/DCNs

✓

Other

DISCREPANCIES/COMMENTS

DOCUMENTATION

HARDWARE

AUDITED BY: Paul Hufham

DATE: 14/12/81 A

CORRECTIVE ACTION/COMMENTS

NAME:

DATE:

RECHECK ACTION/DISPOSITION

NAME:

DATE:

ECKLIST NO: 9

PCA CHECKLIST

DRAWING TYPE: GA, SCHE, PL, ETC.

GA PL

VISION

B B

DRAWING NO.: 56919-40003

SERIAL NO.:

REJECT

DESCRIPTION: P.O.C. SCHE

YES

NO

MAJOR

MINOR

DOCUMENTATION

- . Drawing Released
- . Approved Changes Referenced on Dwg (ECN) ✓
- . Approved Changes Incorporated in Dwg (ECN) ✓

INSPECTION VERIFICATION

- . To Latest Revision Status ✓
- . ECNs Incorporated ✓
- . Other

HARDWARE AUDIT

- . Part Marking in Accordance with Dwg Requirements ✓
- . All Materials/Parts Required by Dwg Incorporated ✓
- . Dimensions in Accordance with Drawing ✓
- . Approved Changes Incorporated ECN/DCNs ✓
- . Other

DISCREPANCIES/COMMENTS

DOCUMENTATION

HARDWARE

NO TESTING VERIFICATION CALLED OUT BY EITHER API OR SINGER LINK.

AUDITED BY: SGT HUEHAM

DATE:

CORRECTIVE ACTION/COMMENTS

AIR FORCE ACTION ITEM

NAME: P. Peterson

DATE: 12-15-81

CHECK ACTION/DISPOSITION

Closed.

NAME: Plam D. Jones

DATE: 17-12-81

CHECKLIST NO. 10

PGA CHECKLIST

DRAWING TYPE: GA, SCHE, PL, ETC.

REVISION

DRAWING NO.:

SERIAL NO.:

REJECT

NOMENCLATURE: *Table Mount Data Processor 103*

YES

NO

MAJOR

MINOR

DOCUMENTATION

- 1. Drawing Released
- 2. Approved Changes Referenced on Dwg (ECN)
- 3. Approved Changes Incorporated in Dwg (ECN)

INSPECTION VERIFICATION

- 4. To Latest Revision Status
- 5. ECNs Incorporated
- 6. Other

HARDWARE AUDIT

- 7. Part Marking in Accordance with Dwg Requirements
- 8. All Materials/Parts Required by Dwg Incorporated
- 9. Dimensions in Accordance with Drawing
- 10. Approved Changes Incorporated ECN/DCNs
- 11. Other

DISCREPANCIES/COMMENTS

DOCUMENTATION

Schematic manual drawings in commercial manual w-z leg etc

HARDWARE

AUDITED BY: *Jet*

DATE: *17 Dec 81*

CORRECTIVE ACTION/COMMENTS

NAME:

DATE:

RECHECK ACTION/DISPOSITION

Closed

NAME: *Peggy J. Jones*

DATE: *17-16-81*

CHECKLIST NO. 11

PCA CHECKLIST

DRAWING TYPE: GA, SCHE, PL, ETC. GA PL

REVISION 14 D

DRAWING NO.: 56919-4000 SERIAL NO.: 5001 REJECT

NOMENCLATURE: Display Generator YES NO MAJOR MINOR

DOCUMENTATION

- 1. Drawing Released
- 2. Approved Changes Referenced on Dwg (ECN)
- 3. Approved Changes Incorporated in Dwg (ECN)

INSPECTION VERIFICATION

- 4. To Latest Revision Status
- 5. ECNs Incorporated
- 6. Other

HARDWARE AUDIT

- 7. Part Marking in Accordance with Dwg Requirements
- 8. All Materials/Parts Required by Dwg Incorporated
- 9. Dimensions in Accordance with Drawing
- 10. Approved Changes Incorporated ECN/DCNs
- 11. Other

DISCREPANCIES/COMMENTS

DOCUMENTATION

Discrepancies - Revisors indicated by R15, R3, R1 & R4 not on reference designation block on drawing. R1 & R4 should be item 44. R3 and R15 should be added to item 32. Revisors are on hardware not on parts list.

HARDWARE

P/N R740SA on 1143 is not on parts cross reference list. 6740ST is ok.
P/N LM318J on 11312/11 is not on parts cross reference list. LM318D is though.

AUDITED BY: Jet DATE: 15 Nov 81

CORRECTIVE ACTION/COMMENTS

- 1. ASSEMBLY DWG WILL BE CORRECTED.
- 2. 56919-4000 & LM318J WILL BE ADDED DWG 56919-40040 CROSS REF. LIST.

NAME: R. Platman DATE: 12.16.81

RECHECK ACTION/DISPOSITION

Drawing corrected

NAME: DATE:

CHECKLIST NO. 12

PCA CHECKLIST

DRAWING TYPE: GA, SCHE, PL, ETC.	GA	PL							
REVISION	B	C							

DRAWING NO.: 40133-47011-1 SERIAL NO.: 0001 + 0002 REJECT

NOMENCLATURE: B. Dimensional Difference Cal. Drawing YES NO MAJOR MINOR

DOCUMENTATION	YES	NO	MAJOR	MINOR
1. Drawing Released	✓			
2. Approved Changes Referenced on Dwg (ECN)	✓			
3. Approved Changes Incorporated in Dwg (ECN)	✓			
INSPECTION VERIFICATION				
4. To Latest Revision Status	✓			
5. ECNs Incorporated	✓			
6. Other				
HARDWARE AUDIT				
7. Part Marking in Accordance with Dwg Requirements	✓			
8. All Materials/Parts Required by Dwg Incorporated	✓			
9. Dimensions in Accordance with Drawing	✓			
10. Approved Changes Incorporated ECN/DCNs	✓			
11. Other				

DISCREPANCIES/COMMENTS DOCUMENTATION
 INSPECTED TO "B" SHOULD BE "C"

HARDWARE

AUDITED BY: Jet DATE: 15 Dec 81

CORRECTIVE ACTION/COMMENTS
 THE BOARD WILL BE INSPECTED TO THE LATEST REVISION LEVEL.

NAME: R Putnam DATE: 12.16.81

RECHECK ACTION/DISPOSITION

NAME: DATE:

CHECKLIST NO. <u>13</u>		PCA CHECKLIST									
DRAWING TYPE: GA, SCHE, PL, ETC.		GA	PL								
REVISION		C	5								
DRAWING NO.: <u>56919-47001</u>		SERIAL NO.: <u>0001</u>				REJECT					
NOMENCLATURE: <u>SPECIAL EFFECTS AUDIO</u>		YES	NO	MAJOR		MINOR					
DOCUMENTATION											
1. Drawing Released		-									
2. Approved Changes Referenced on Dwg (ECN)		-									
3. Approved Changes Incorporated in Dwg (ECN)		✓									
INSPECTION VERIFICATION											
4. To Latest Revision Status		✓									
5. ECNs Incorporated		✓									
6. Other											
HARDWARE AUDIT											
7. Part Marking in Accordance with Dwg Requirements											
8. All Materials/Parts Required by Dwg Incorporated		✓									
9. Dimensions in Accordance with Drawing		✓									
10. Approved Changes Incorporated ECN/DCNs		✓									
11. Other											
<u>DISCREPANCIES/COMMENTS</u>						<u>DOCUMENTATION</u>					
<u>HARDWARE</u>											
u121 has P/O LM318J for the IC. The parts reference list indicates LM318D.											
COMMENT Part LM318J has a wider temperature range than LM318D. LM318 still meets Mil Spec requirements.											
AUDITED BY: <u>Jet</u>						DATE: <u>15 Dec 81</u>					
<u>CORRECTIVE ACTION/COMMENTS</u>											
PART NO. LM318J WILL BE ADDED TO 56919-40040											
NAME: <u>R Putnam</u>						DATE: <u>12.16.81</u>					
<u>RECHECK ACTION/DISPOSITION</u>											
NAME:						DATE:					

CHECKLIST NO. 14

PCA CHECKLIST

DRAWING TYPE: GA, SCHE. PL, ETC. GA PL

REVISION 12 EF

DRAWING NO.: 56919-47201 SERIAL NO.: 0001 REJECT

NOMENCLATURE: 69 DISPLAY DRIVER YES NO MAJOR MINOR

- DOCUMENTATION
- 1. Drawing Released/
 - 2. Approved Changes Referenced on Dwg (ECN)
 - 3. Approved Changes Incorporated in Dwg (ECN)

- INSPECTION VERIFICATION
- 4. To Latest Revision Status
 - 5. ECNs Incorporated
 - 6. Other

- HARDWARE AUDIT
- 7. Part Marking in Accordance with Dwg Requirements
 - 8. All Materials/Parts Required by Dwg Incorporated
 - 9. Dimensions in Accordance with Drawing
 - 10. Approved Changes Incorporated ECN/DCNs
 - 11. Other

DISCREPANCIES/COMMENTS DOCUMENTATION

HARDWARE

AUDITED BY: [Signature]

DATE: 15 Dec 81

CORRECTIVE ACTION/COMMENTS

NAME: DATE:

RECHECK ACTION/DISPOSITION

NAME: DATE:

CHECKLIST NO. 15

PCA CHECKLIST

DRAWING TYPE: GA, SCHE, PL, ETC.

REVISION

DRAWING NO.: 5297 - 40020

SERIAL NO.: 0001

REJECT

NOMENCLATURE: FFSU2 ASSY

ST-40-TAP (2000)

YES

NO

MAJOR

MINOR

DOCUMENTATION

- 1. Drawing Released ✓
- 2. Approved Changes Referenced on Dwg (ECN) ✓
- 3. Approved Changes Incorporated in Dwg (ECN) ✓

INSPECTION VERIFICATION

- 4. To Latest Revision Status ✓
- 5. ECNs Incorporated ✓
- 6. Other

HARDWARE AUDIT

- 7. Part Marking in Accordance with Dwg Requirements ✓
- 8. All Materials/Parts Required by Dwg Incorporated ✓
- 9. Dimensions in Accordance with Drawing ✓
- 10. Approved Changes Incorporated ECN/DCNs ✓
- 11. Other

DISCREPANCIES/COMMENTS

DOCUMENTATION

#7 All not in upper left corner of HARDWARE
 ST-40-TAP Bd Part Dwg NOTE Dwg 40020
 ITEM 72-CLAMP LOOP- Dwg say 3 places - only 2 shown only 2 loops on board.

AUDITED BY: D.E.H.

DATE: 12/14/81

CORRECTIVE ACTION/COMMENTS #7 MARK HWRE IN ACCORDANCE WITH DWG.
 #8 ADD CLAMP TO HWRE AS INDICATED BY THE DWG.
 AND ASSY WILL BE INSPECTED TO LATEST REVISION.

NAME: R. Putnam

DATE: 12.16.81

RECHECK ACTION/DISPOSITION

NAME

DATE

CHECKLIST NO. <u>16</u>		PCA CHECKLIST			
DRAWING TYPE: GA, SCHE, PL, ETC.		<u>GA</u>	<u>PL</u>		
REVISION		<u>B</u>	<u>B</u>		
DRAWING NO.: <u>56919-49410</u>		SERIAL NO.:		REJECT	
NOMENCLATURE: <u>CABLE, COCKPIT ASSEMBLY</u>		YES	NO	MAJOR	MINOR
DOCUMENTATION					
1. Drawing Released		<input checked="" type="checkbox"/>			
2. Approved Changes Referenced on Dwg (ECN)		<input checked="" type="checkbox"/>			
3. Approved Changes Incorporated in Dwg (ECN)		<input checked="" type="checkbox"/>			
INSPECTION VERIFICATION					
4. To Latest Revision Status					
5. ECNs Incorporated					
6. Other					
HARDWARE AUDIT					
7. Part Marking in Accordance with Dwg Requirements			<input checked="" type="checkbox"/>		
8. All Materials/Parts Required by Dwg Incorporated		<input checked="" type="checkbox"/>			
9. Dimensions in Accordance with Drawing		<input checked="" type="checkbox"/>			
10. Approved Changes Incorporated ECN/DCNs		<input checked="" type="checkbox"/>			
11. Other					
<u>DISCREPANCIES/COMMENTS</u>		<u>DOCUMENTATION</u>			
DRAWING INDICATES FOR MARKER 'R' 1A1M13/52A11J3		SHOULD READ 1A1M13/52A1J3.			
<u>HARDWARE</u>					
AUDITED BY: <u>A. [Signature]</u>		DATE: <u>15-12-81</u>			
<u>CORRECTIVE ACTION/COMMENTS</u>					
DWG WILL BE CORRECTED TO READ "1A1M13/52A1J3".					
NAME: <u>R. Putnam</u>		DATE: <u>12.16.81</u>			
<u>RECHECK ACTION/DISPOSITION</u>					
[Handwritten notes]					
NAME:		DATE:			

CHECKLIST NO. 17

PCA CHECKLIST

DRAWING TYPE: GA, SCHE, PL, ETC. GA PL

REVISION E F

DRAWING NO.: 56919-40018 SERIAL NO.: REJECT

NOMENCLATURE: Connector Panel Assembly YES NO MAJOR MINOR

DOCUMENTATION

- 1. Drawing Released
- 2. Approved Changes Referenced on Dwg (ECN)
- 3. Approved Changes Incorporated in Dwg (ECN)

INSPECTION VERIFICATION

- 4. To Latest Revision Status
- 5. ECNs Incorporated
- 6. Other

HARDWARE AUDIT

- 7. Part Marking in Accordance with Dwg Requirements
- 8. All Materials/Parts Required by Dwg Incorporated
- 9. Dimensions in Accordance with Drawing
- 10. Approved Changes Incorporated ECN/DCNs
- 11. Other

DISCREPANCIES/COMMENTS

DOCUMENTATION

TO MAINTAIN CONSISTENCY WITH DWG 56919-40017 TR 1 AND TR 2 SHOULD BE REFERENCED ON DWG 56919-40018.

HARDWARE

AUDITED BY: L. Hughes

DATE: 15-12-81

CORRECTIVE ACTION/COMMENTS

DWG WILL BE CORRECTED TO REF TR 1 & 2.

NAME: R. Putman

DATE: 12-16-81

RECHECK ACTION/DISPOSITION

[Handwritten notes]

NAME:

DATE:

CHECKLIST NO. 18

PCA CHECKLIST

DRAWING TYPE: GA, SCHE, PL, ETC.			PL					
REVISION	1		F					

DRAWING NO.: 56919-40130 SERIAL NO.: 0002 REJECT

NUMERICAL NOMENCLATURE: POD CONTROL PANEL C7834 YES NO MAJOR MINOR

DOCUMENTATION

1. Drawing Released				
2. Approved Changes Referenced on Dwg (ECN)		✓		
3. Approved Changes Incorporated in Dwg (ECN)		✓		

INSPECTION VERIFICATION

1. To Latest Revision Status		✓		
2. ECNs Incorporated		✓		
3. Other				

HARDWARE AUDIT

7. Part Marking in Accordance with Dwg Requirements		✓		
8. All Materials/Parts Required by Dwg Incorporated		✓		
9. Dimensions in Accordance with Drawing		✓		
10. Approved Changes Incorporated ECN/DCNs		✓		
11. Other				

DISCREPANCIES/COMMENTS

DOCUMENTATION

HARDWARE

AUDITED BY: Jank

DATE: 15 Dec 81

CORRECTIVE ACTION/COMMENTS

NAME:

DATE:

RECHECK ACTION/DISPOSITION

CHECKLIST NO. 19

PCA CHECKLIST

DRAWING TYPE: GA, SCHE, PL, ETC.

GA PL

REVISION

B B

DRAWING NO.: 56919-40026

SERIAL NO.:

REJECT

NOMENCLATURE: PANEL ASSEMBLY

YES

NO

MAJOR

MINOR

DOCUMENTATION

1. Drawing Released

✓

2. Approved Changes Referenced on Dwg (ECN)

✓

3. Approved Changes Incorporated in Dwg (ECN)

✓

INSPECTION VERIFICATION

4. To Latest Revision Status

5. ECNs Incorporated

6. Other

HARDWARE AUDIT

7. Part Marking in Accordance with Dwg Requirements

✓

8. All Materials/Parts Required by Dwg Incorporated

✓

9. Dimensions in Accordance with Drawing

✓

10. Approved Changes Incorporated ECN/DCNs

✓

11. Other

DISCREPANCIES/COMMENTS

DOCUMENTATION

HARDWARE

AUDITED BY: *P. H. [Signature]*

DATE: 15-12-81

CORRECTIVE ACTION/COMMENTS

NAME:

DATE:

RECHECK ACTION/DISPOSITION

NAME:

DATE:

CHECKLIST NO. 20

PCA CHECKLIST

DRAWING TYPE: GA, SCHE. PL, ETC.

31

1/L

REVISION

C

DRAWING NO.: 56919-47002

SERIAL NO.: 0001

REJECT

NOMENCLATURE: TRIPLE 16 BIT REGISTER ASSY

YES

NO

MAJOR

MINOR

DOCUMENTATION

1. Drawing Released

✓

2. Approved Changes Referenced on Dwg (ECN)

✓

3. Approved Changes Incorporated in Dwg (ECN)

✓

INSPECTION VERIFICATION

4. To Latest Revision Status

✓

5. ECNs Incorporated

✓

6. Other

HARDWARE AUDIT

7. Part Marking in Accordance with Dwg Requirements

✓

8. All Materials/Parts Required by Dwg Incorporated

✓

9. Dimensions in Accordance with Drawing

✓

10. Approved Changes Incorporated ECN/DCNs

✓

11. Other

DISCREPANCIES/COMMENTS

DOCUMENTATION

HARDWARE

AUDITED BY:

Jmt

DATE:

15 Dec 81

CORRECTIVE ACTION/COMMENTS

NAME:

DATE:

RECHECK ACTION/DISPOSITION

NAME:

DATE:

CHECKLIST NO. 21

PCA CHECKLIST

DRAWING TYPE: GA, SCHE, PL, ETC.

REVISION

DRAWING NO.: 56919-49402

SERIAL NO.:

REJECT

NOMENCLATURE: CORD/AIR INTERFACE CABLE

YES

NO

MAJOR

MINOR

DOCUMENTATION

- 1. Drawing Released
- 2. Approved Changes Referenced on Dwg (ECN)
- 3. Approved Changes Incorporated in Dwg (ECN)

INSPECTION VERIFICATION

- 4. To Latest Revision Status
- 5. ECNs Incorporated
- 6. Other

HARDWARE AUDIT

- 7. Part Marking in Accordance with Dwg Requirements
- 8. All Materials/Parts Required by Dwg Incorporated
- 9. Dimensions in Accordance with Drawing
- 10. Approved Changes Incorporated ECN/DCNs
- 11. Other

DISCREPANCIES/COMMENTS

DOCUMENTATION

#9 The dimension of the HARDWARE "Y" at each end of cable to connector is specified 12.00 ± 1.00". Actual cable is approx 9.5" to 9.625"

AUDITED BY: PHH

DATE: 15 Dec 81

CORRECTIVE ACTION/COMMENTS

THE CABLE DWG DIM. 12.00 WILL SHOW A TOLERANCE OF ±3.00.

NAME: R Patnam

DATE: 12.16.81

RECHECK ACTION/DISPOSITION

Dimension correct at Terminal 23 pins

NAME:

DATE:

CHECKLIST NO. 22

PCA CHECKLIST

DRAWING TYPE: GA, SCHE, PL, ETC. GA PL
REVISION G K

DRAWING NO.: 56919-40110 SERIAL NO.: 0002 REJECT

NOMENCLATURE: TOLL INDICATOR AUX CONTROL YES NO MAJOR MINOR

DOCUMENTATION

- 1. Drawing Released
- 2. Approved Changes Referenced on Dwg (ECN)
- 3. Approved Changes Incorporated in Dwg (ECN)

INSPECTION VERIFICATION

- 4. To Latest Revision Status
- 5. ECNs Incorporated
- 6. Other

HARDWARE AUDIT

- 7. Part Marking in Accordance with Dwg Requirements
- 8. All Materials/Parts Required by Dwg Incorporated
- 9. Dimensions in Accordance with Drawing
- 10. Approved Changes Incorporated ECN/DCNs
- 11. Other

DISCREPANCIES/COMMENTS DOCUMENTATION

HARDWARE

QUALITY

FRONT PANEL HAS NO SUPPORT ON UPPER PART OF PLATE.

AUDITED BY: P. Dyl DATE: 15-12-81

CORRECTIVE ACTION/COMMENTS ASSY FUNCTION WILL BE TESTED AFTER INSTALLATION INTO A TFS COCKPIT.

NAME: R. Pateman DATE: 12.16.81

RECHECK ACTION/DISPOSITION

CHECKLIST NO. 23

PCA CHECKLIST

DRAWING TYPE: GA, SCHE, PL, ETC.

GA PL

REVISION

C D

DRAWING NO.: 56919-4002

SERIAL NO.:

REJECT

NOMENCLATURE: OVERHEAT SENSOR ASSEMBLY

YES

NO

MAJOR

MINOR

DOCUMENTATION

- 1. Drawing Released
- 2. Approved Changes Referenced on Dwg (ECN)
- 3. Approved Changes Incorporated in Dwg (ECN)

INSPECTION VERIFICATION

- 4. To Latest Revision Status
- 5. ECNs Incorporated
- 6. Other

HARDWARE AUDIT

- 7. Part Marking in Accordance with Dwg Requirements *JKM*
- 8. All Materials/Parts Required by Dwg Incorporated
- 9. Dimensions in Accordance with Drawing
- 10. Approved Changes Incorporated ECN/DCNs
- 11. Other

DISCREPANCIES/COMMENTS

DOCUMENTATION

Assembly drawing does not match the installed item. ON THE BOARD TB1 HAS PIN 1 AND PIN 6 MARKERS BUT NOT ON THE DRAWING

HARDWARE

AUDITED BY: *P. H. ...*

DATE: 11-12-81

CORRECTIVE ACTION/COMMENTS

MARKING FOOTPRINTS

DWG WILL BE REVISED TO INDICATE PIN 1
1/1/W DWG 56919-4004 *JKM*

NAME:

DATE:

RECHECK ACTION/DISPOSITION

NAME:

DATE:

CHECKLIST NO. 24

PCA CHECKLIST

DRAWING TYPE: GA, SCHE, PL, ETC.	GA	PL							
REVISION	F	J							

DRAWING NO.: 56919-40120 SERIAL NO.: 0002 REJECT

NOMENCLATURE: CHAFF/FLARE CONTROL PANEL YES NO MAJOR MINOR

DOCUMENTATION

1. Drawing Released	✓			
2. Approved Changes Referenced on Dwg (ECN)	✓			
3. Approved Changes Incorporated in Dwg (ECN)	✓			

INSPECTION VERIFICATION

4. To Latest Revision Status	✓			
5. ECNs Incorporated	✓			
6. Other				

HARDWARE AUDIT

7. Part Marking in Accordance with Dwg Requirements	✓			
8. All Materials/Parts Required by Dwg Incorporated	✓			
9. Dimensions in Accordance with Drawing	✓			
10. Approved Changes Incorporated ECN/DCNs	✓			
11. Other				

DISCREPANCIES/COMMENTS DOCUMENTATION

HARDWARE

AUDITED BY: P. Hughes DATE: 15-12-81

CORRECTIVE ACTION/COMMENTS

NAME: DATE:

RECHECK ACTION/DISPOSITION

NAME: DATE:

CHECKLIST NO. 25

PCA CHECKLIST

DRAWING TYPE: GA, SCHE, PL, ETC.	GA	PL							
REVISION	B	0							

DRAWING NO.: <u>56919-40100</u>	SERIAL NO.: <u>0007</u>	REJECT	
---------------------------------	-------------------------	--------	--

NOMENCLATURE: <u>PRIMARY TOOL INDICATOR</u>	YES	NO	MAJOR	MINOR
---	-----	----	-------	-------

DOCUMENTATION

- | | | | | |
|---|---|--|--|--|
| 1. Drawing Released | ✓ | | | |
| 2. Approved Changes Referenced on Dwg (ECN) | ✓ | | | |
| 3. Approved Changes Incorporated in Dwg (ECN) | ✓ | | | |

INSPECTION VERIFICATION

- | | | | | |
|------------------------------|---|--|--|--|
| 4. To Latest Revision Status | ✓ | | | |
| 5. ECNs Incorporated | ✓ | | | |
| 6. Other | | | | |

HARDWARE AUDIT

- | | | | | |
|---|---|--|--|--|
| 7. Part Marking in Accordance with Dwg Requirements | ✓ | | | |
| 8. All Materials/Parts Required by Dwg Incorporated | ✓ | | | |
| 9. Dimensions in Accordance with Drawing | ✓ | | | |
| 10. Approved Changes Incorporated ECN/DCNs | ✓ | | | |
| 11. Other | | | | |

<u>DISCREPANCIES/COMMENTS</u>	<u>DOCUMENTATION</u>

<u>HARDWARE</u>

AUDITED BY: P. [Signature] DATE: 15-12-81

CORRECTIVE ACTION/COMMENTS

NAME: _____ DATE: _____

RECHECK ACTION/DISPOSITION

NAME: _____ DATE: _____

CHECKLIST NO. 26

PCA CHECKLIST

DRAWING TYPE: GA, SCHE, PL, ETC.	GA								
REVISION	13								

DRAWING NO.: 26.914-4442C SERIAL NO.: - REJECT

NOMENCLATURE: <u>CA-14 In. dia. Azimuth</u>	YES	NO	MAJOR	MINOR
---	-----	----	-------	-------

DOCUMENTATION

- | | | | | |
|---|---|--|--|--|
| 1. Drawing Released | / | | | |
| 2. Approved Changes Referenced on Dwg (ECN) | / | | | |
| 3. Approved Changes Incorporated in Dwg (ECN) | / | | | |

INSPECTION VERIFICATION

- | | | | | |
|------------------------------|---|--|--|--|
| 4. To Latest Revision Status | / | | | |
| 5. ECNs Incorporated | / | | | |
| 6. Other | | | | |

HARDWARE AUDIT

- | | | | | |
|---|---|--|--|--|
| 7. Part Marking in Accordance with Dwg Requirements | / | | | |
| 8. All Materials/Parts Required by Dwg Incorporated | / | | | |
| 9. Dimensions in Accordance with Drawing | / | | | |
| 10. Approved Changes Incorporated ECN/DCNs | / | | | |
| 11. Other | | | | |

<u>DISCREPANCIES/COMMENTS</u>	<u>DOCUMENTATION</u>

<u>HARDWARE</u>

AUDITED BY: Jet DATE: 15 Dec 81

CORRECTIVE ACTION/COMMENTS

NAME: DATE:

RECHECK ACTION/DISPOSITION

NAME: DATE:

CHECKLIST NO. 27

PCA CHECKLIST

DRAWING TYPE: GA, SCHE, PL, ETC.

REVISION

DRAWING NO.: ~~52414-4720~~ SERIAL NO.: REJECT

NOMENCLATURE: Right Angle Extender Card YES NO MAJOR MINOR

DOCUMENTATION

- 1. Drawing Released ✓
- 2. Approved Changes Referenced on Dwg (ECN) ✓
- 3. Approved Changes Incorporated in Dwg (ECN) ✓

INSPECTION VERIFICATION

- 4. To Latest Revision Status ✓
- 5. ECNs Incorporated ✓
- 6. Other

HARDWARE AUDIT

- 7. Part Marking in Accordance with Dwg Requirements ✓
- 8. All Materials/Parts Required by Dwg Incorporated ✓
- 9. Dimensions in Accordance with Drawing ✓
- 10. Approved Changes Incorporated ECN/DCNs
- 11. Other

DISCREPANCIES/COMMENTS

DOCUMENTATION

HARDWARE

AUDITED BY: Jet

DATE: 16 Dec 81

CORRECTIVE ACTION/COMMENTS

NAME:

DATE:

RECHECK ACTION/DISPOSITION

NAME:

DATE:

CHECKLIST NO. 28

PCA CHECKLIST

DRAWING TYPE: GA. SCHE. PL, ETC.

REVISION

DRAWING NO.: 40133 - 40001 SERIAL NO.:

REJECT

NOMENCLATURE: Guide Card Extracts YES NO MAJOR MINOR

DOCUMENTATION

- 1. Drawing Released
- 2. Approved Changes Referenced on Dwg (ECN)
- 3. Approved Changes Incorporated in Dwg (ECN)

INSPECTION VERIFICATION

- 4. To Latest Revision Status
- 5. ECNs Incorporated
- 6. Other

HARDWARE AUDIT

- 7. Part Marking in Accordance with Dwg Requirements
- 8. All Materials/Parts Required by Dwg Incorporated
- 9. Dimensions in Accordance with Drawing
- 10. Approved Changes Incorporated ECN/DCNs
- 11. Other

DISCREPANCIES/COMMENTS DOCUMENTATION

HARDWARE

AUDITED BY: Jet

DATE: 16 Dec 81

CORRECTIVE ACTION/COMMENTS

NAME: DATE:

RECHECK ACTION/DISPOSITION

NAME: DATE:

CHECKLIST NO. 29

PCA CHECKLIST

DRAWING TYPE: GA, SCHE, PL, ETC.

REVISION

DRAWING NO.: 56919-90001-19

SERIAL NO.:

REJECT

NOMENCLATURE: LOC Hard Disc Drive

YES

NO

MAJOR

MINOR

DOCUMENTATION

- 1. Drawing Released
- 2. Approved Changes Referenced on Dwg (ECN)
- 3. Approved Changes Incorporated in Dwg (ECN)

INSPECTION VERIFICATION

- 4. To Latest Revision Status *20001201 Z zh*
- 5. ECNs Incorporated *Comments*
- 6. Other

HARDWARE AUDIT

- 7. Part Marking in Accordance with Dwg Requirements
- 8. All Materials/Parts Required by Dwg Incorporated
- 9. Dimensions in Accordance with Drawing
- 10. Approved Changes Incorporated ECN/DCNs
- 11. Other

DISCREPANCIES/COMMENTS

DOCUMENTATION

HARDWARE

AUDITED BY: *Jet*

DATE: *16 Dec 81*

CORRECTIVE ACTION/COMMENTS

NAME:

DATE:

RECHECK ACTION/DISPOSITION

NAME:

DATE:

CHECKLIST NO. 30

PCA CHECKLIST

DRAWING TYPE: GA, SCHE, PL, ETC.

REVISION

DRAWING NO.: 52-19-9007

SERIAL NO.:

REJECT

DESCRIPTION: Hazeltine 1520

YES

NO

MAJOR

MINOR

DOCUMENTATION

- . Drawing Released
- . Approved Changes Referenced on Dwg (ECN)
- . Approved Changes Incorporated in Dwg (ECN)

INSPECTION VERIFICATION

- . To Latest Revision Status *consistent with* *summary manual*
- . ECNs Incorporated
- . Other

HARDWARE AUDIT

- . Part Marking in Accordance with Dwg Requirements
- . All Materials/Parts Required by Dwg Incorporated
- . Dimensions in Accordance with Drawing
- 0. Approved Changes Incorporated ECN/DCNs
- 1. Other

DISCREPANCIES/COMMENTS

DOCUMENTATION

HARDWARE

AUDITED BY: Jct

DATE: 10 Dec 81

CORRECTIVE ACTION/COMMENTS

NAME:

DATE:

RECHECK ACTION/DISPOSITION

NAME:

DATE:

DATE
FILME

2-8