

AD-A111 280

BATTELLE PACIFIC NORTHWEST LABS RICHLAND WASH
VEGETATION MAPS OF THE HANFORD REACH, COLUMBIA RIVER, (U)
MAR 80 J L WARREN

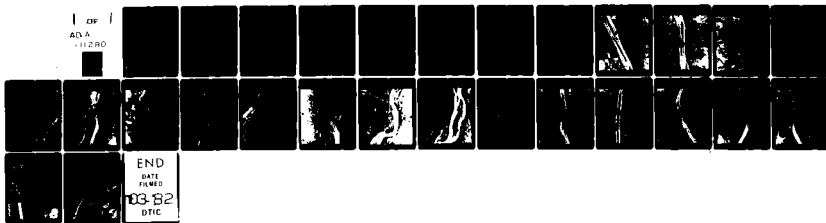
F/6 6/3

DACW67-79-C-0155

NL

UNCLASSIFIED

1 OF 1
AD-A
-11280



AD A111280

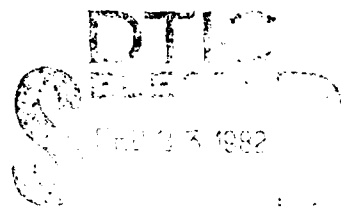


Vegetation Maps of the Hanford Reach, Columbia River

J. L. Warren

March 1980

Prepared for
U.S. Army Corps of Engineers, Seattle District
under Contract DACW67-79-C-0155



THE TECHNICAL FINDINGS AND CONCLUSIONS CONTAINED IN THIS REPORT DO NOT NECESSARILY REFLECT THE VIEWS OF CONCURRENCE OF THE SPONSORING AGENCY.

Battelle
Pacific Northwest Laboratories
Richland, Washington 99352

DTIC FILE COPY

82 0 20 915

DISCLAIMER NOTICE

**THIS DOCUMENT IS BEST QUALITY
PRACTICABLE. THE COPY FURNISHED
TO DTIC CONTAINED A SIGNIFICANT
NUMBER OF PAGES WHICH DO NOT
REPRODUCE LEGIBLY.**

Major plant communities recognized along the Hanford Reach are summarized in Table 1. A description of the different kinds of plant communities along the Hanford Reach may be found in the report which this volume supplements. Riparian vegetation is differentiated from nonriparian vegetation primarily based on the judgment that riparian vegetation is dependent upon a source of water other than rainfall for its survival. On the shores of the Hanford Reach, these sources of water are the Columbia River, spring seeps and waste water return ditches and canals associated with the Bureau of Reclamation's Columbia Basin Irrigation projects.

A 23p
CP



INTRODUCTION

This volume was prepared as part of a study of aquatic and riparian resources of the Hanford Reach of the Columbia River. The U.S. Army Corps of Engineers has been directed by Congress to study the Hanford Reach to develop a plan for future use of the Columbia River and to evaluate the Ben Franklin Lock, Dam and Reservoir alternative. Identification of existing resources and uses of the reach are necessary to provide background information for the study of alternative uses.

The aerial photographs in this volume, taken in August 1979 and provided by the Corps of Engineers, were used as the basis for mapping shoreline vegetation along the Hanford Reach, from the City of Richland to Priest Rapids Dam. Ground-truthing was performed in October 1979, and a series of ground-level photographs were taken to help verify the mapping. The shoreline and islands were visited, and notes were made of the dominant plant species and their rooting substrates. Preliminary maps showing community types were prepared using natural color and infrared (false-color) photographs obtained from other sources. Additional ground-truthing was done in late December 1979 to help refine the preliminary boundaries.

Major plant communities recognized along the Hanford Reach are summarized in Table 1. A description of the different kinds of plant communities along the Hanford Reach may be found in the report which this volume supplements.^(a) Riparian vegetation is differentiated from nonriparian vegetation primarily based on the judgment that riparian vegetation is dependent upon a source of water other than rainfall for its survival. On the shores of the Hanford Reach, these sources of water are the Columbia River, spring seeps and waste-water return ditches and canals associated with the Bureau of Reclamation's Columbia Basin Irrigation projects.

Riparian vegetation is listed for Categories 1 through 4 of Table 1. Vegetation in Categories 1 and 3 is found in small, isolated patches on the Hanford Reach, with the exception of common spikerush (Eleocharis palustris), which is abundant along the river's edge. Vegetation in Categories 2 and 4 are found extensively along shorelines and slough areas. Nonriparian vegetation has been divided into four categories describing vegetation on island cobble substrates (Category 5), upland silt loam substrates (Category 6A), island sand or silt loam substrates (Category 6B) and sand dunes (Category 7).

Other vegetation on the Hanford Reach not listed in Table 1 includes crops growing in agricultural fields located along the eastern shore downstream from

(a) Fickeisen, D. H., D. D. Dauble, D. A. Neitzel, W. H. Rickard, R. L. Skaggs and J. L. Warren. 1980. Aquatic and Riparian Resource Study of the Hanford Reach, Columbia River, Washington. Report to the U.S. Army Corps of Engineers, Seattle District, Seattle, Washington by Battelle, Pacific Northwest Laboratories, Richland, WA.

Ringold Flats and scattered clumps of exotic trees planted in the 1930's and earlier marking the location of abandoned farmsteads. These groups are present on both sides of the river and usually consist of single rows of black locust (Robinia pseudo-acacia), lombardy poplar, Russian olive (Elaeagnus angustifolia), Siberian elm (Elmus pumila) or white mulberry (Morus alba) areas. Nonvegetated areas such as the steep walls of White Bluffs that drop directly into the river are also found on the Hanford Reach.

Table 1. (contd)

Category	Species	Substrate	Water Level Fluctuations	Location
Wet	absinthium northern buckwheat lupine sand dropseed	cobble	Wetted only during annual flood periods	Scattered locations along the river and islands, 100 D gravel bar, 100 F area, 100 B-C area; all found below 400' contour
6A	UPLAND SEMI-ARID big sagebrush bitter-brush common rabbit-brush spiny hopsage cheat grass Sandberg's bluegrass Jim Hill mustard western tansymustard	silt loam	Not wetted by river even at flood stage	Lands on the Hanford Site and slopes above Ringold Flats; found above and below 400' contour
6B	ISLAND SEMI-ARID thick-spiked wheatgrass giant wildrye yarrow cheat grass	silt-sand loam	Not wetted by river even at flood stage	Lands on the Hanford Site and slopes above Ringold Flats; found above and below 400' contour
7	lance-leaf scurf-pea pale evening-primrose thick-spiked wheatgrass winged dock	sand	Not wetted by river even at flood stage	West bank of the river opposite island 11; found above and below 400' contour
Dry				

non-riparian

061



68

6B

6A

1-5-49 17000 FT 9 2 9

17000 FT 9 2 9



06-3

4

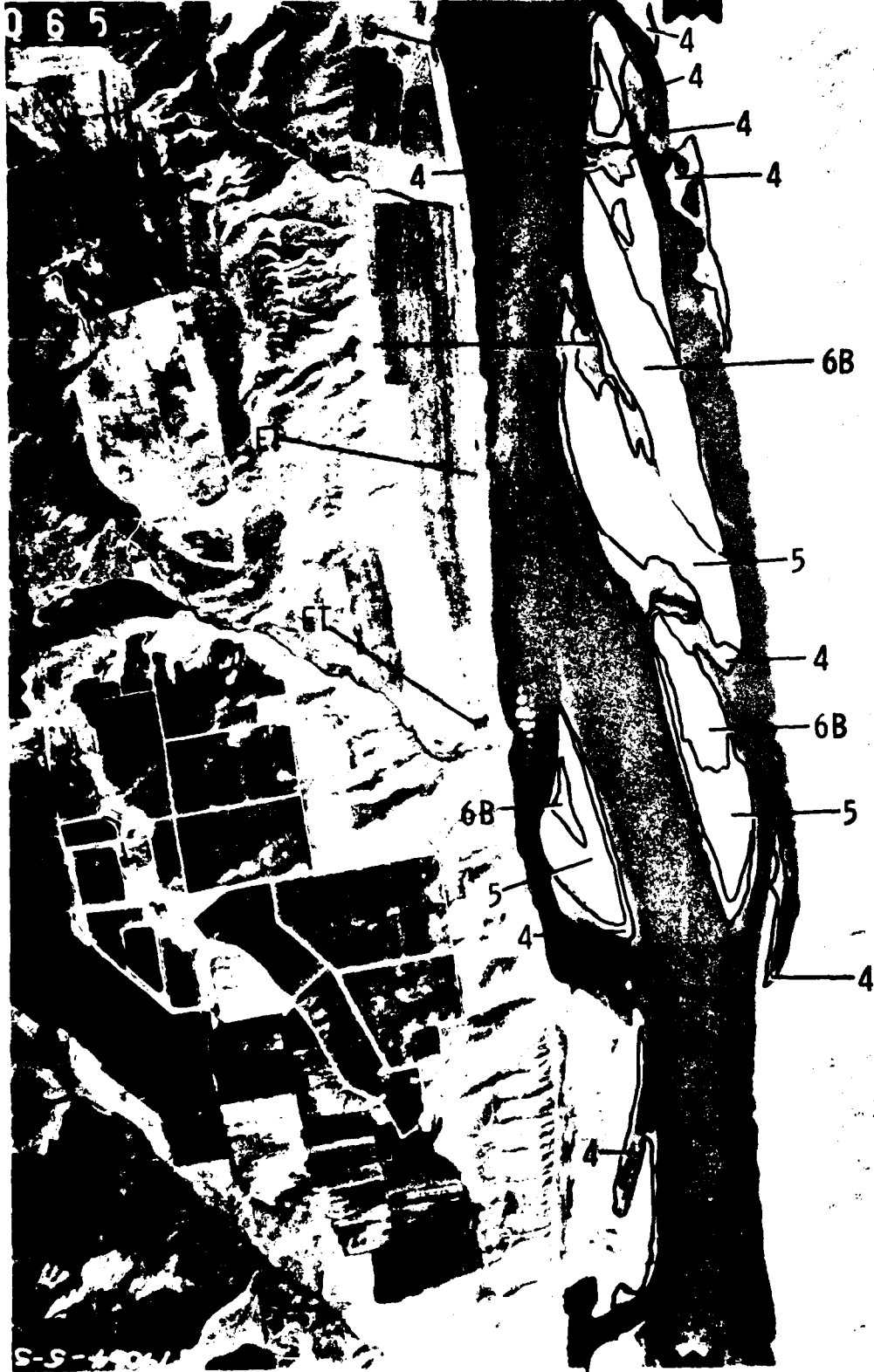
68

4

ET

ET

0 6 5

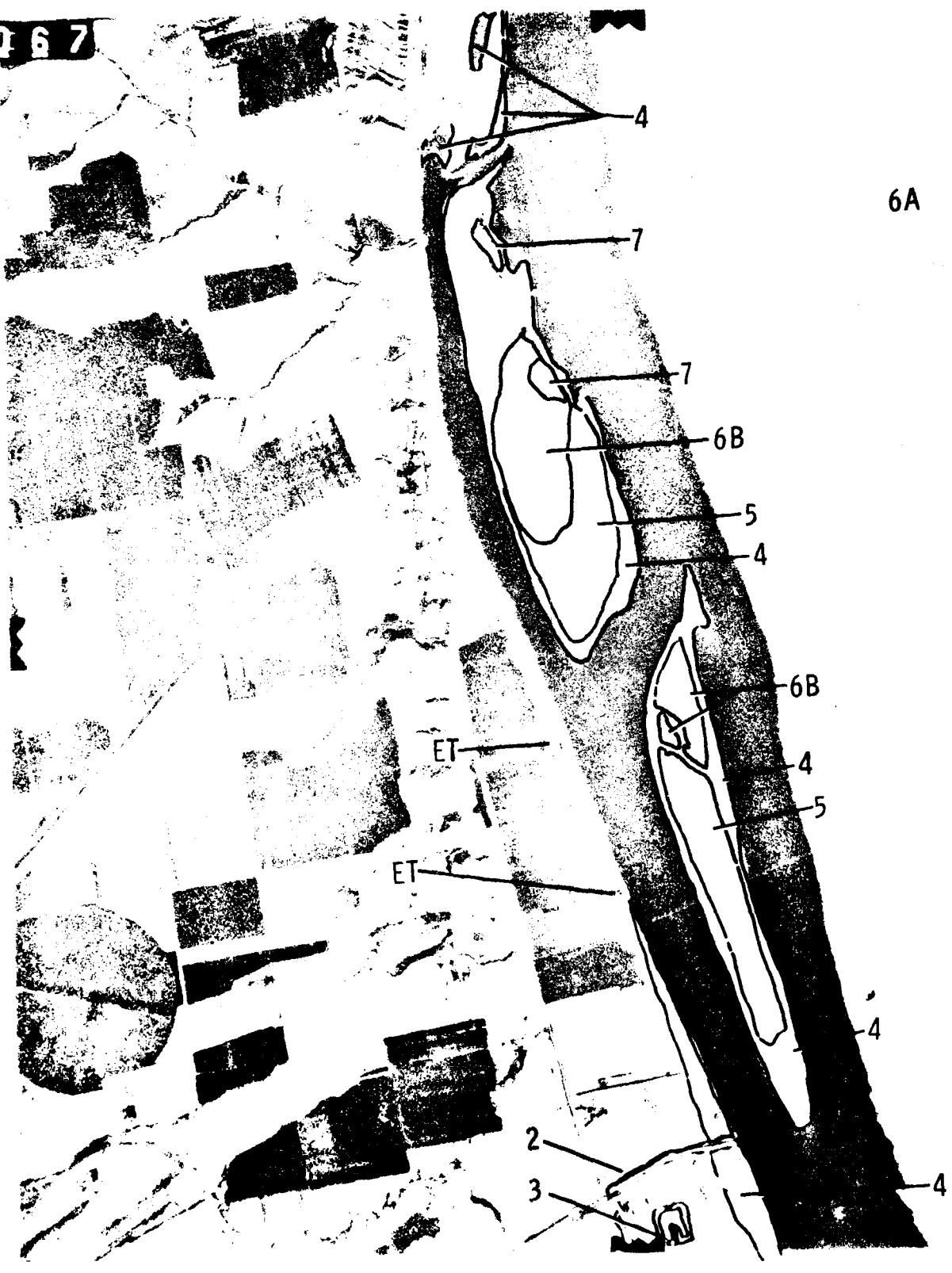


6A

6A

S-S-4906

167



6A

7





027



6A-7

ET

4

6A

ET

6A

ET

フ-カ-



081



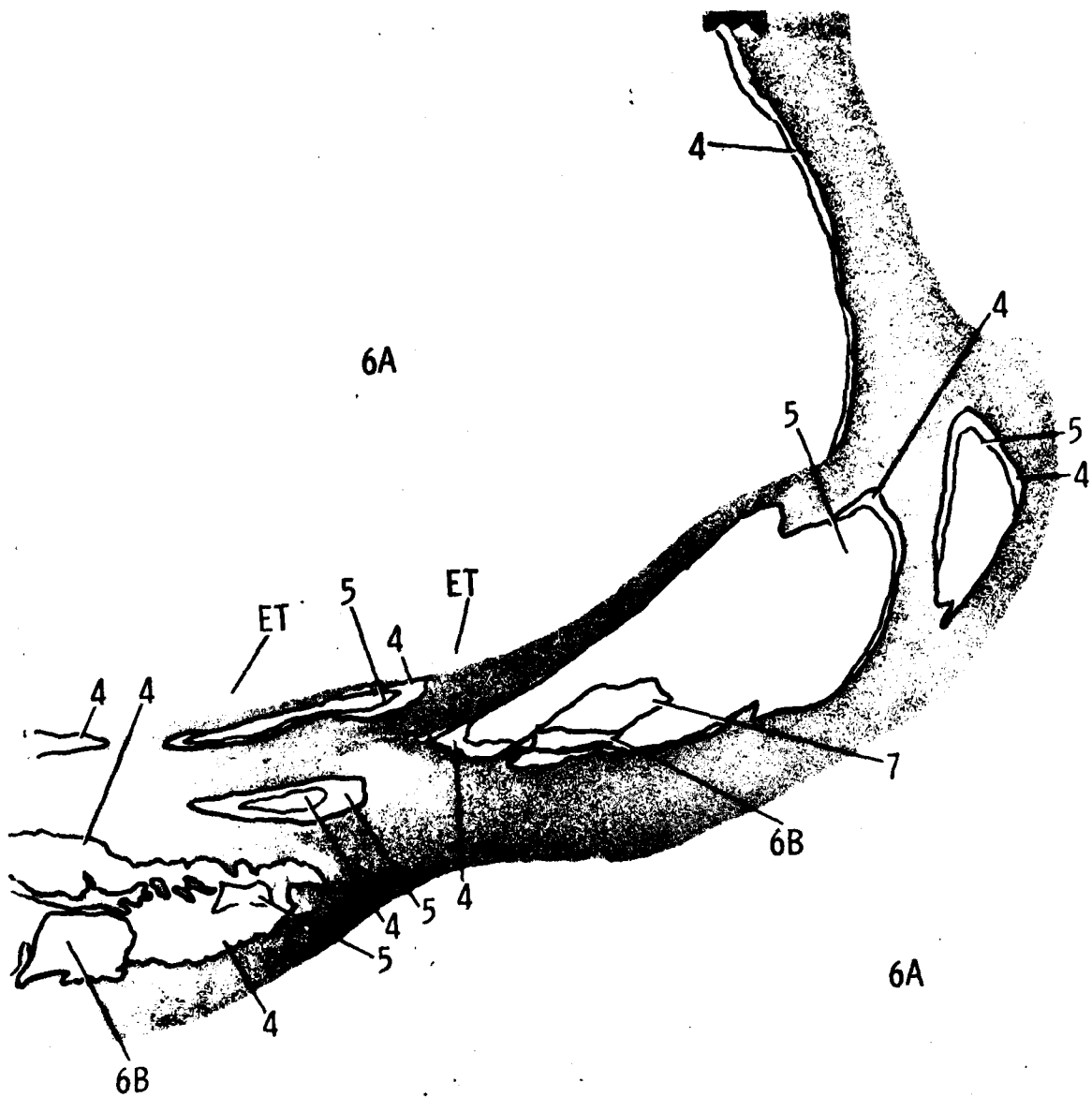
6A

9/1-10-10



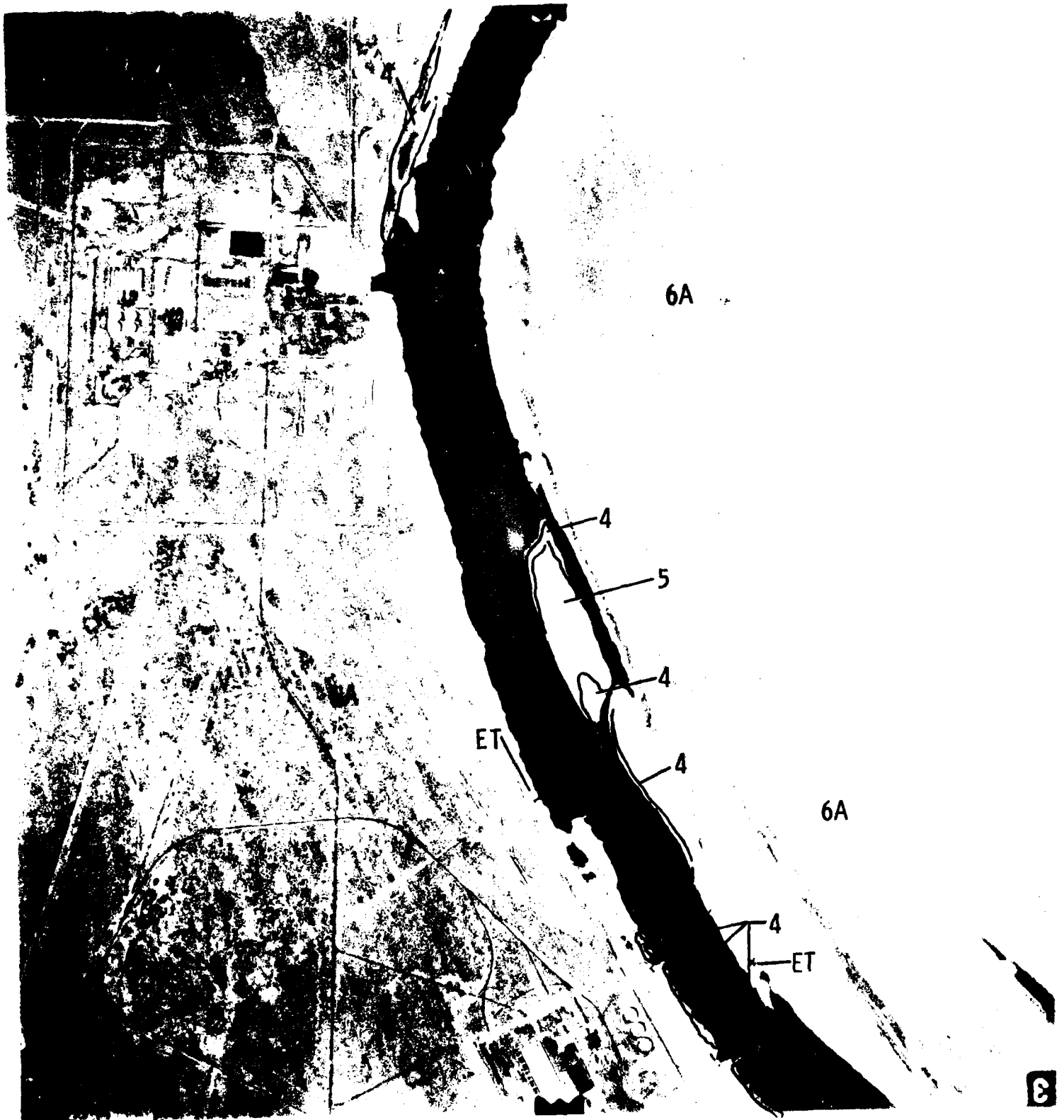














6A

6A

6A

4

E

1



ET

7

6A

6A

4

2



579064-1

6A

6A

6A



FILMED
3-8