

ADA111388

UNCLASSIFIED 12/81

SECURITY CLASSIFICATION OF THIS PAGE (When Data Entered)

REPORT DOCUMENTATION PAGE		READ INSTRUCTIONS BEFORE COMPLETING FORM
1. REPORT NUMBER WHOI-81-104	2. GOVT ACCESSION NO. AD-A111 388	3. RECIPIENT'S CATALOG NUMBER
4. TITLE (and Subtitle) COMPUTER-PROCESSED GEOPHYSICAL ATLAS OF DIGITAL DATA FOR THE EAST COAST MARGIN OF THE UNITED STATES FROM SURFACE AND SPACECRAFT DATA	5. TYPE OF REPORT & PERIOD COVERED Technical	
	6. PERFORMING ORG. REPORT NUMBER	
7. AUTHOR(s) Carl Bowin, Julie Milligan and Karen Dunkle	8. CONTRACT OR GRANT NUMBER(s) N00014-82-C-0019	
9. PERFORMING ORGANIZATION NAME AND ADDRESS Woods Hole Oceanographic Institution Woods Hole, Massachusetts 02543	10. PROGRAM ELEMENT, PROJECT, TASK AREA & WORK UNIT NUMBERS	
11. CONTROLLING OFFICE NAME AND ADDRESS NORDA/National Space Technology Laboratory Bay St. Louis, MS 39529	12. REPORT DATE December 1981	
	13. NUMBER OF PAGES 32 pages	
14. MONITORING AGENCY NAME & ADDRESS (if different from Controlling Office)	15. SECURITY CLASS. (of this report) Unclassified	
	15a. DECLASSIFICATION/DOWNGRADING SCHEDULE	
16. DISTRIBUTION STATEMENT (of this Report) Approved for public release; distribution unlimited.		
17. DISTRIBUTION STATEMENT (of the abstract entered in Block 20, if different from Report) A		
18. SUPPLEMENTARY NOTES This report should be cited as: Woods Hole Oceanog. Inst. Tech. Rept. WHOI-81-104.		
19. KEY WORDS (Continue on reverse side if necessary and identify by block number) 1. Digital data display; geophysical data 2. Geographical data processing 3. East coast margin of the United States		
20. ABSTRACT (Continue on reverse side if necessary and identify by block number) This atlas comprises maps for the East Coast margin of the United States of free-air gravity anomaly, geoid anomaly, regional geoid anomaly, magnetic crustal anomaly, and bathymetry. Data from surface measurements, GEOS-III and MAGSTAT Satellites, GEM-9 spherical harmonic coefficients, and SYNBAPS bathymetry profiling system were utilized. Estimated error maps for the geoid data are not included because for the marine areas, these data are uniformly at very low error. The data are presented in three sets of maps		

DTIC SELECTED
 FEB 26 1982

DD FORM 1 JAN 73 1473

EDITION OF 1 NOV 68 IS OBSOLETE
S/N 0102-014-6601

6x1000

UNCLASSIFIED 12/81
SECURITY CLASSIFICATION OF THIS PAGE (When Data Entered)

Cont.

WHOI-81-104

COMPUTER-PROCESSED GEOPHYSICAL ATLAS OF DIGITAL DATA FOR
THE EAST COAST MARGIN OF THE UNITED STATES
FROM SURFACE AND SPACECRAFT DATA

By

Carl Bowin, Julie Milligan
and
Karen Dunkle

WOODS HOLE OCEANOGRAPHIC INSTITUTION
Woods Hole, Massachusetts 02543

December 1981

TECHNICAL REPORT

*Prepared for the Office of Naval Research under Contract
N00014-82-C-0019 and for the Joint Oceanographic Institutions,
Inc. subcontracts 20-81, 24-81, and 21-81.*

*Reproduction in whole or in part is permitted for any pur-
pose of the United States Government. This report should be
cited as: Woods Hole Oceanog. Inst. Tech. Rep. WHOI-81-104.*

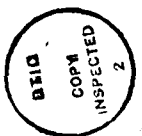
Approved for public release; distribution unlimited.

Approved for Distribution:

John I. Ewing
John I. Ewing, Chairman
Department of Geology and Geophysics

TABLE OF CONTENTS

	<u>Page</u>
Abstract.....	2
Introduction.....	3
Methodology.....	3
Acknowledgements.....	6
References.....	7
Index Map.....	8
Free-Air Gravity Anomaly, Northern Portion.....	9
Gravity Error Estimate, Northern Portion.....	10
Geoid (GEOS-3), Northern Portion.....	11
Regional Geoid (GEM 9 degree 10), Northern Portion.....	12
Residual Geoid, Northern Portion.....	13
Magnetic Crustal Anomaly (MAGSAT), Northern Portion.....	14
Magnetic Crustal Anomaly Error Estimate, Northern Portion.....	15
Bathymetry (SYNBAPS), Northern Portion.....	16
Free-Air Gravity Anomaly, Central Portion.....	17
Gravity Error Estimate, Central Portion.....	18
Geoid (GEOS-3), Central Portion.....	19
Regional Geoid (GEM 9 degree 10), Central Portion.....	20
Residual Geoid, Central Portion.....	21
Magnetic Crustal Anomaly (MAGSAT), Central Portion.....	22
Magnetic Crustal Anomaly Error Estimate, Central Portion.....	23
Bathymetry (SYNBAPS), Central Portion.....	24
Free-Air Gravity Anomaly, Southern Portion.....	25
Gravity Error Estimate, Southern Portion.....	26
Geoid (GEOS-3), Southern Portion.....	27
Regional Geoid (GEM 9 degree 10), Southern Portion.....	28
Residual Geoid, Southern Portion.....	29
Magnetic Crustal Anomaly (MAGSAT), Southern Portion.....	30
Magnetic Crustal Anomaly Error Estimate, Southern Portion.....	31
Bathymetry (SYNBAPS), Southern Portion.....	32



A

ABSTRACT

→ This atlas comprises maps for the East Coast margin of the United States of free-air gravity anomaly, geoid anomaly, regional geoid anomaly, residual geoid anomaly, magnetic crustal anomaly, and bathymetry. Data from surface measurements, GEOS-III and MAGSAT Satellites, GEM-9 spherical harmonic coefficients, and SYNBAPS bathymetry profiling system were utilized. Estimated error maps for the geoid data are not included because for the marine areas, these data are uniformly of very low error. The data are presented in three sets of maps of northern, central, and southern portions of the margin.

INTRODUCTION

This atlas comprises maps for the East Coast margin of the United States of free-air gravity anomaly, geoid anomaly, regional geoid anomaly, residual geoid anomaly, magnetic crustal anomaly, and bathymetry. Maps of estimated error are included for free-air gravity and magnetic crustal anomaly. Estimated error maps for the geoid data are not included because for the marine areas, these data are uniformly of very low error. The data are presented in three sets of maps of northern, central, and southern portions of the margin.

METHODOLOGY

Data for all these maps were prepared by interpolating values to an orthogonal grid of latitude and longitude positions. This grid is such that all points are equally spaced in a Mercator projection. For a given area, the more dense the number of grid points, the greater can be the detail recorded in the final maps. However, the denser the grid, the more computer time required for the interpolation. The maps of this atlas are a compromise, having a spacing of 0.2° in longitude. This is equivalent to approximately 25 grid points per degree square.

The interpolation for the gravity, geoid, and magnetic crustal anomaly was accomplished using objective mapping techniques (Bretherton, et. al., 1976; Gandin, 1965) which provided optimal estimates in the sense of a Gausso-Markov least square estimator. The technique also provides

relative error estimates: the higher the error estimate, the poorer the quality of the interpolated value. Note that higher error estimates usually occur when the data distribution for interpolation is the weakest.

The gravity data was interpolated from our digital gravity data library at Woods Hole Oceanographic Institution. This library comprises over four million observations world-wide. The geoid data was interpolated from our digital library of GEOS-3 radar altimeter measurements as adjusted by the Defense Mapping Agency (Brace, 1977). This data base covers all the world's oceans between latitudes of about 65°N and 65°S. The magnetic crustal anomaly values were interpolated from a set of global estimates at a 2° latitude and longitude spacing from MAGSAT data prepared by Robert Langel of Goddard Space Flight Center (P.C. August, 1981).

The interpolation of bathymetry data was accomplished using the U.S. Navy SYNAPS system installed on our VAX computer. This system was developed by Roger van Wickenhouse of NORDA and comprises gridded polynomial coefficients from which bathymetry can be calculated (Van Wyckhouse, 1973). Error estimates are not provided.

The regional geoid anomaly was computed from the GEM-9 set of spherical harmonic coefficients (Lerch et al, 1979) through degree 10. Degree 10 was determined by Bowin (1980, 1981, in prep.) to provide a good estimate of geoid anomalies resulting from mass anomalies deep in the earth: those due to the deeper parts of plate convergent zones, from the deep mantle, and those at the core-mantle boundary region. Error

estimates are not available for the GEM-9 spherical harmonic coefficient set. Subtraction of this regional geoid anomaly from the interpolated geoid value at each grid point, yields the residual geoid anomaly which results from mass anomalies in the outer 600 km of the earth (Bowin, 1980, 1981, in preparation). This residual geoid anomaly commonly shows good correlation with surficial geology.

Following gridding, each data set was then contoured using the program GPCP. A latitude and longitude grid overlay was superimposed on the contour plot generated by GPCP. For the gravity and geoid maps, the location of the original measurements used in making the grid interpolations was also plotted with contours and position grid. Additional data outside the map boundaries was utilized in the interpolation of gravity, geoid, and magnetic crustal anomaly values. Thus, the interpolated values near, and at, the edges of the maps are based on data surrounding each point, not only those within the map bounds. The estimated error maps indicate variations in their quality as well as for interior points.

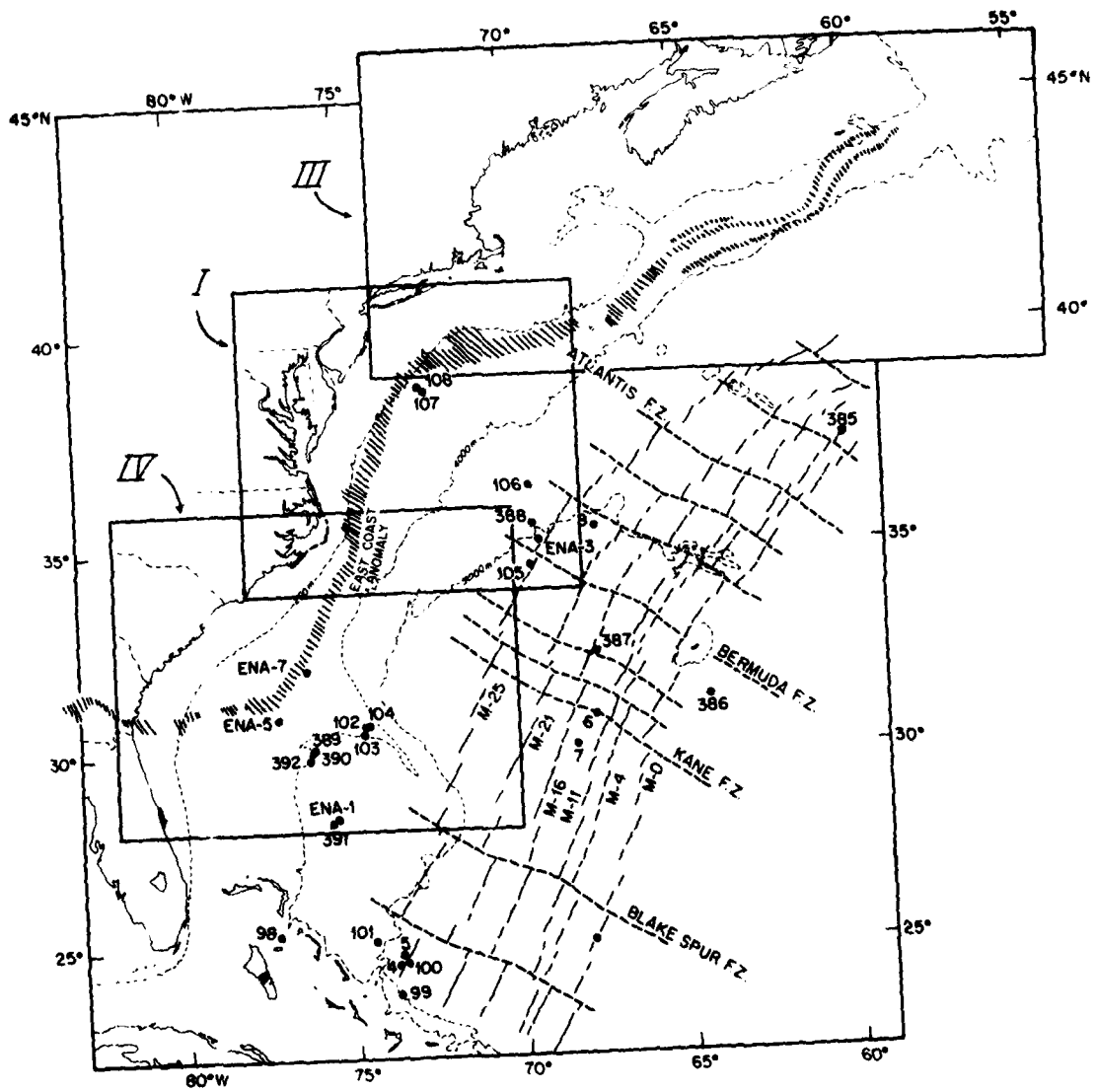
ACKNOWLEDGEMENTS

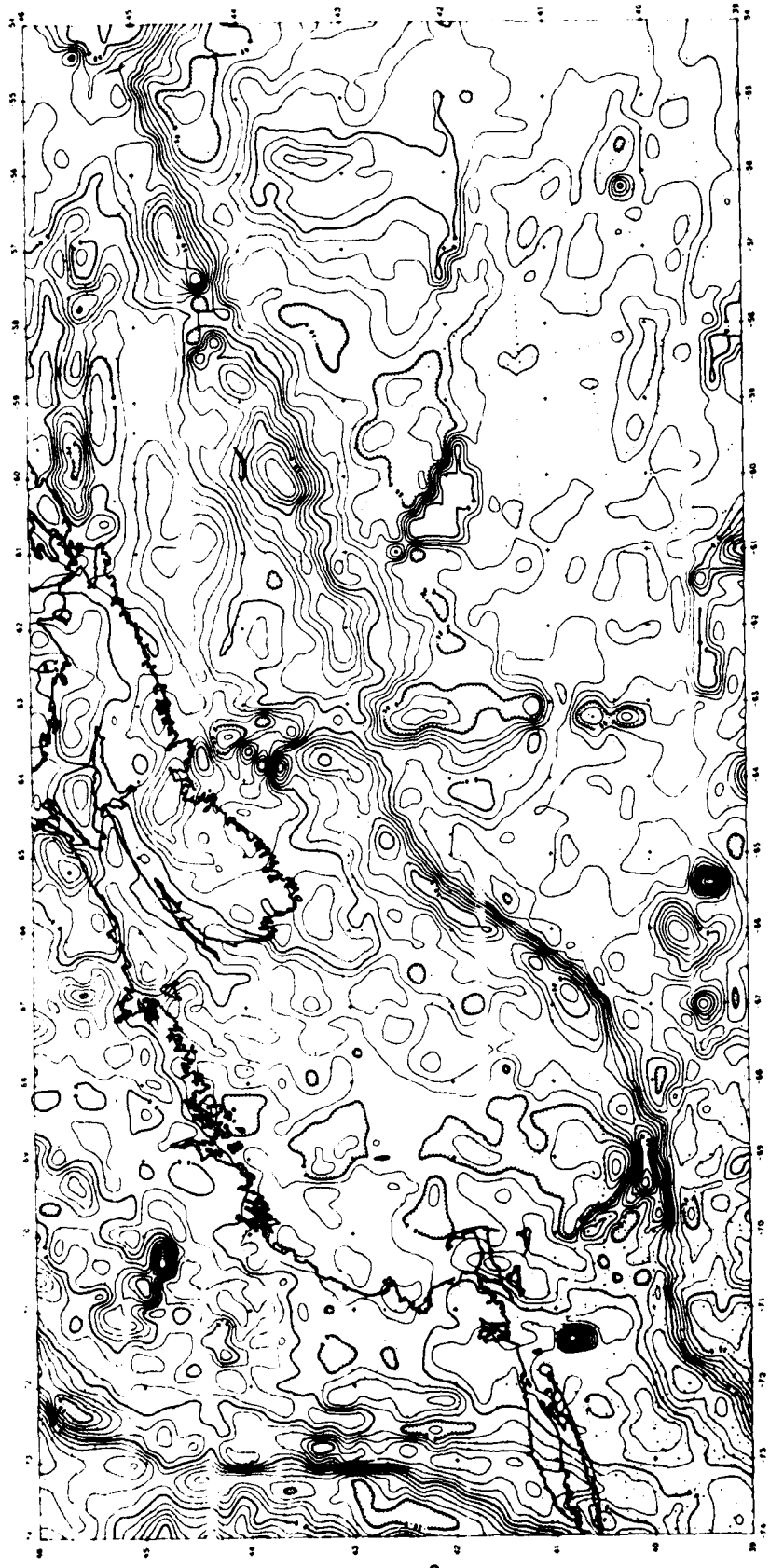
The development of the rapid and effective storage and retrieval system was aided by the efforts of Skip Little and Robert Groman. This retrieval system has made practical the implementation of the objective mapping interpolation scheme. We thank Brechner Owens for his invaluable guidance in developing these interpolation procedures. Those developments were supported by contracts with the Office of Naval Research and the United States Geological Survey. The preparation of the maps of this Atlas were supported principally as part of the Ocean Margin Drilling Synthesis Program funded by the National Science Foundation and administered by JOI, Inc. This effort has led to further improvements in the interpolation procedures which have been incorporated in preparing the maps of this Atlas.

REFERENCES

- Bowin, C.O., 1980. Why the Earth's Greatest Geoid Anomaly is so Negative. EOS, Vol. 61, No. 17, p. 209.
- Bowin, C.O., 1981. Mass and Topographic Anomalies at the Core-mantle Boundary Region from Gravity and Geoid Observations (abs), IASPEI 1981 Abstracts, 21st Gen. Assem., pg. B2.2.
- Bowin, C.O., in preparation. Decomposition of the Earth's Gravity Field.
- Brace, K., 1977. Preliminary ocean-area geoid from Geos-3 satellite radar altimetry. Paper presented at Geos-3 meeting, NASA, New Orleans, La., Nov. 1977.
- Bretherton, F.P., R.E. Davis and C.B. Fandry, 1976. A technique for objective analysis and design of oceanographic experiments applied to MODE-73. Deep-Sea Res., Vol. 23, 559-582.
- Gandin, L.S., 1965. Objective analysis of meteorological fields. Trans. fr. Russian. Israel Program for Scientific Translations Ltd., Jerusalem.
- Langel, R.A., 1980. MAGSAT Scientific Investigations. NASA Technical Memorandum 80698.
- Lerch, F.J., S.M. Klosko, R.E. Laubscher, and C.A. Wagner, 1979. Gravity model improvement using GEOS 3 (GEM 9 and 10). J. Geophys. Res., Vol. 84, p. 3897-3916.
- Van Wyckhouse, R.J., 1973. Synthetic Bathymetry Profiling System (SYNBAPS). Tech. Rep., Naval Oceanographic Office, Washington, D.C.

INDEX MAP

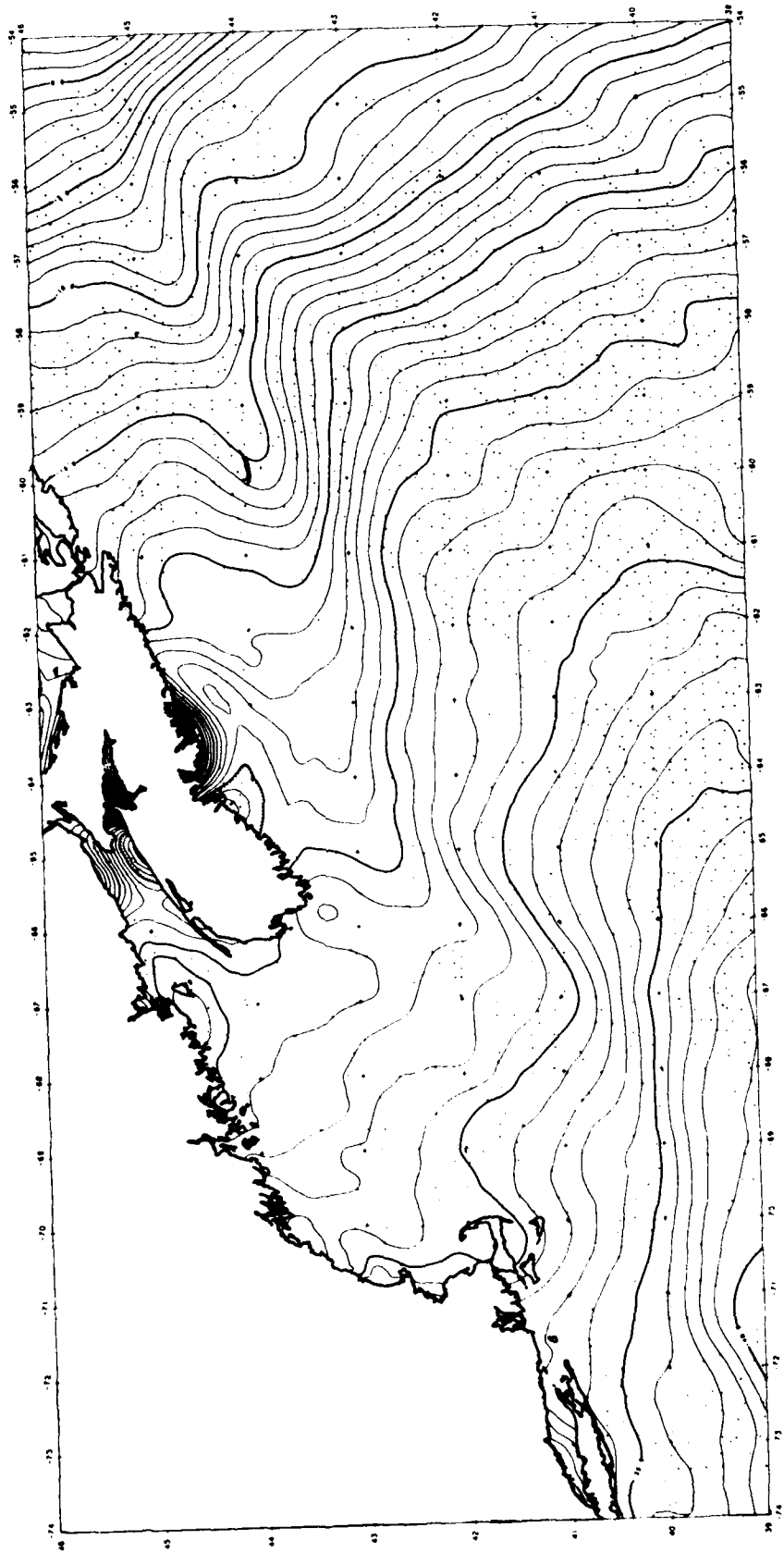




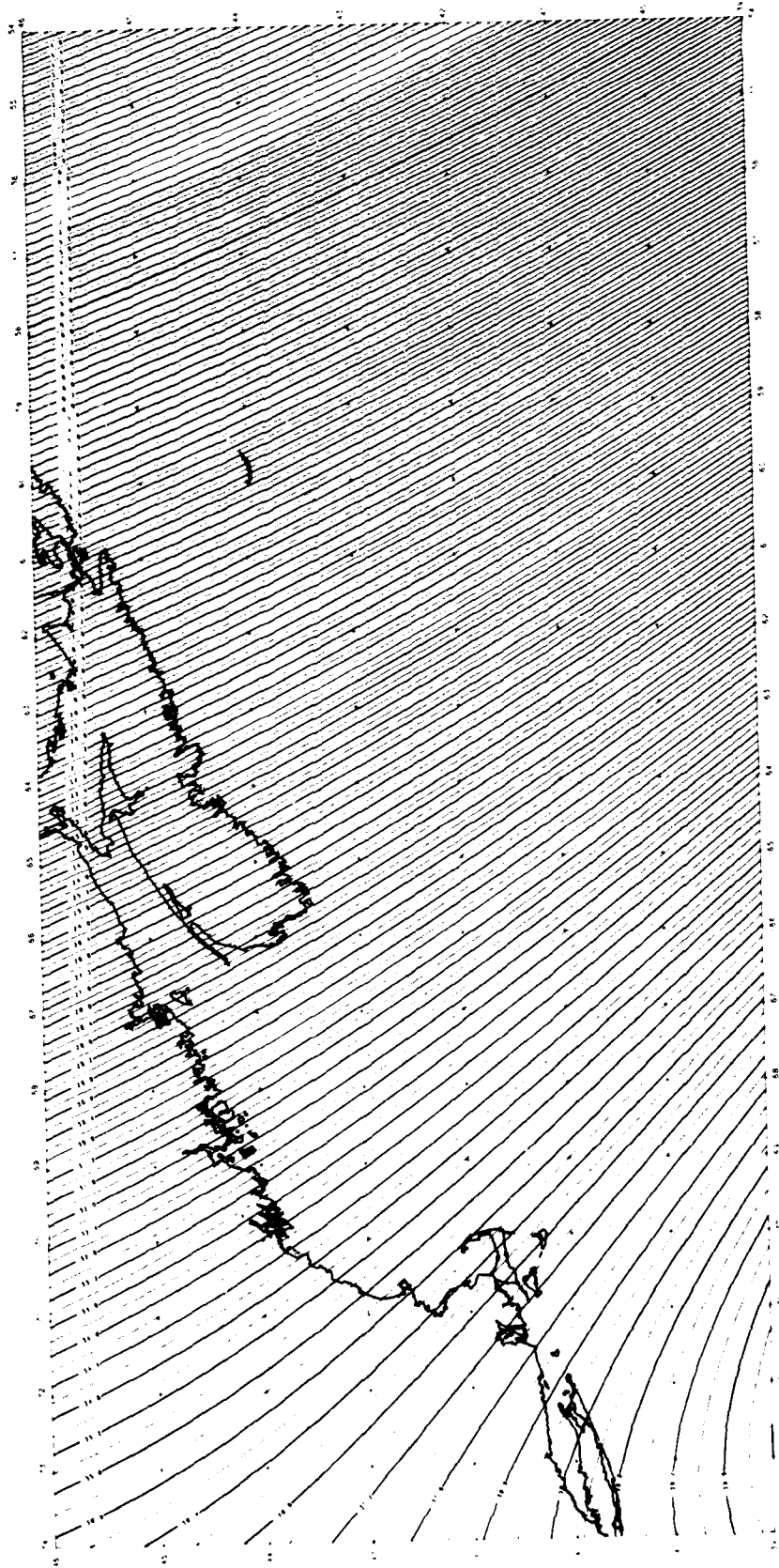
FREE-AIR GRAVITY ANOMALY



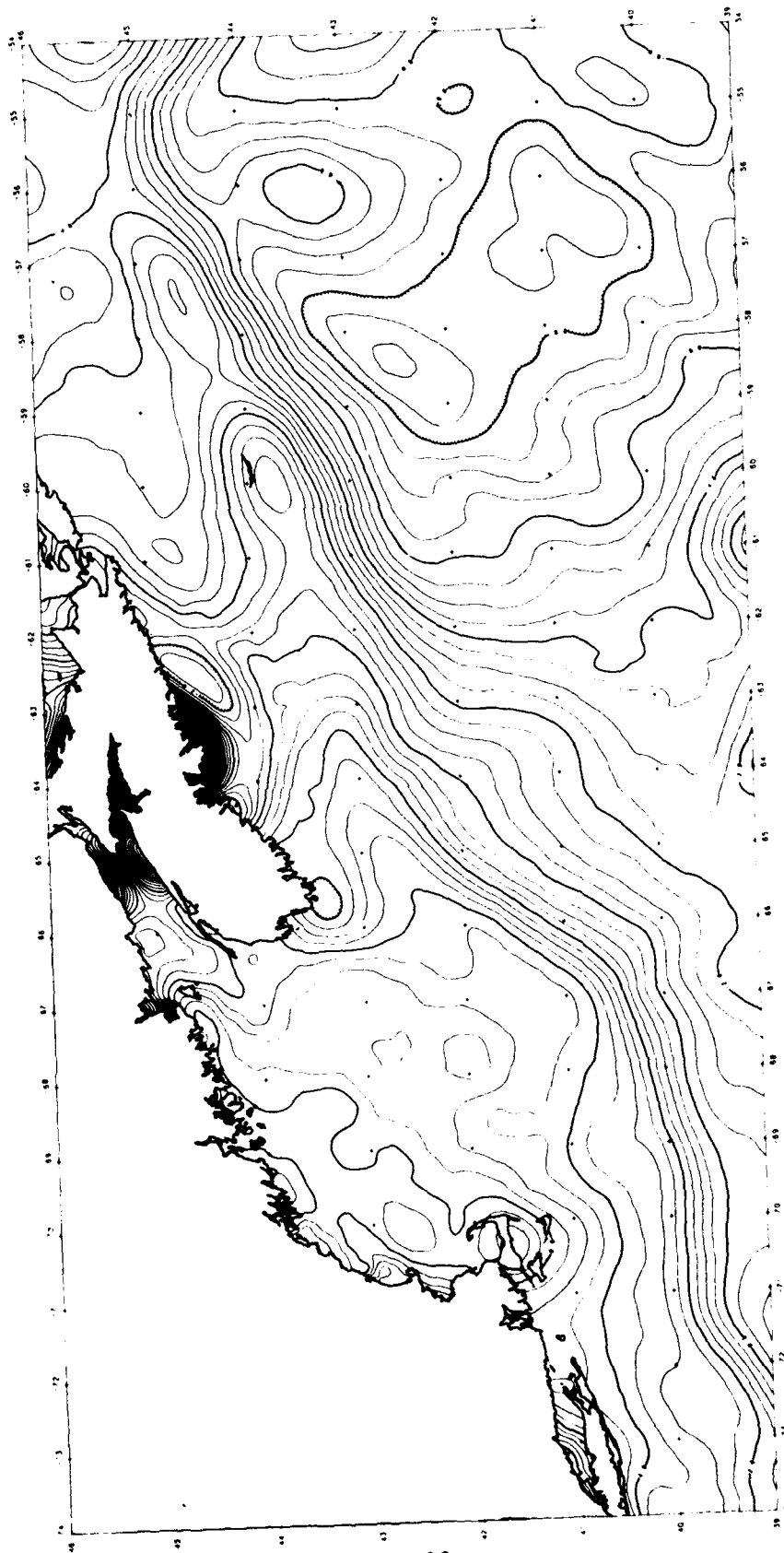
GRAVITY ERROR ESTIMATE



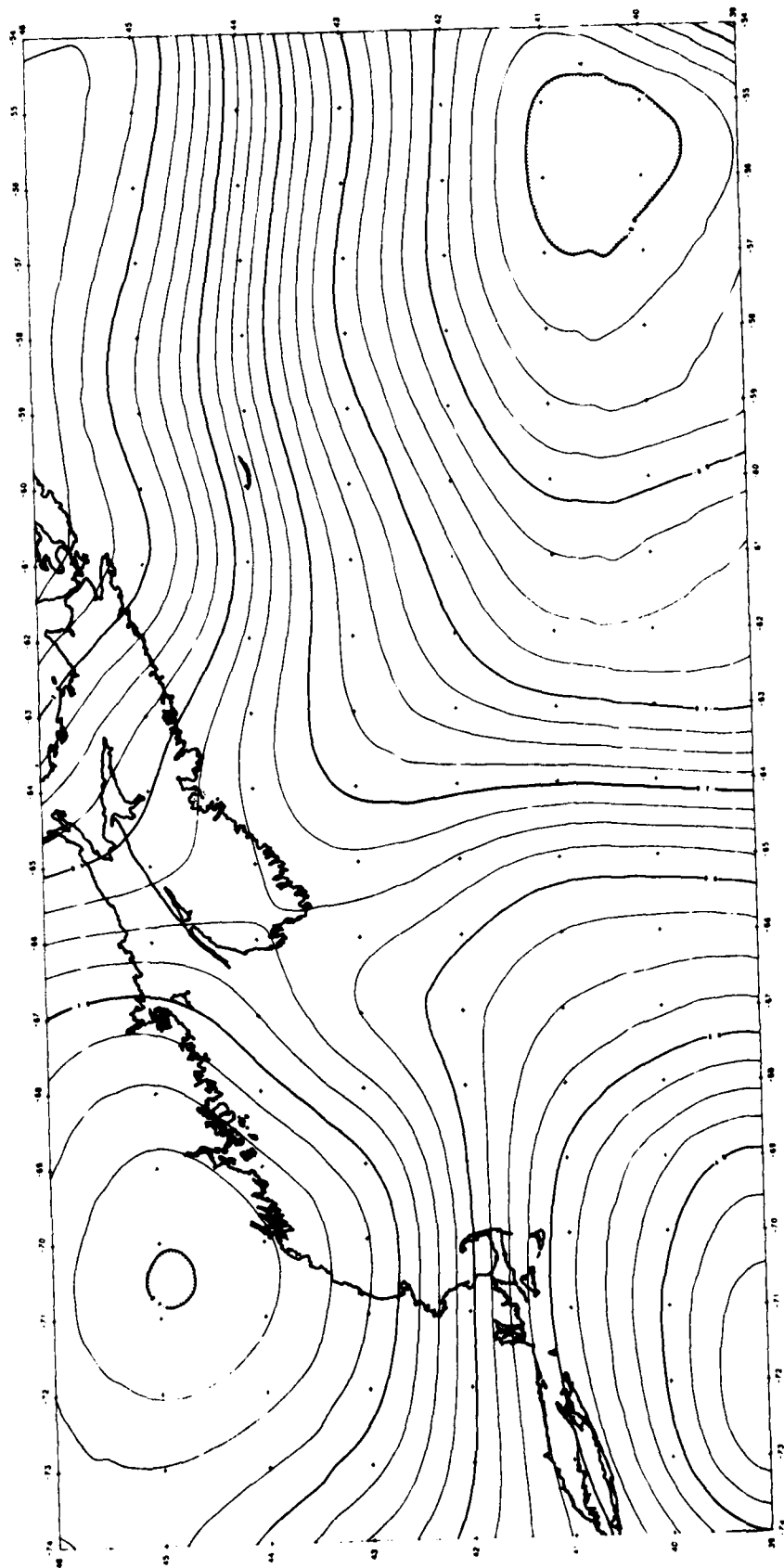
GEOID (GEOS-3)



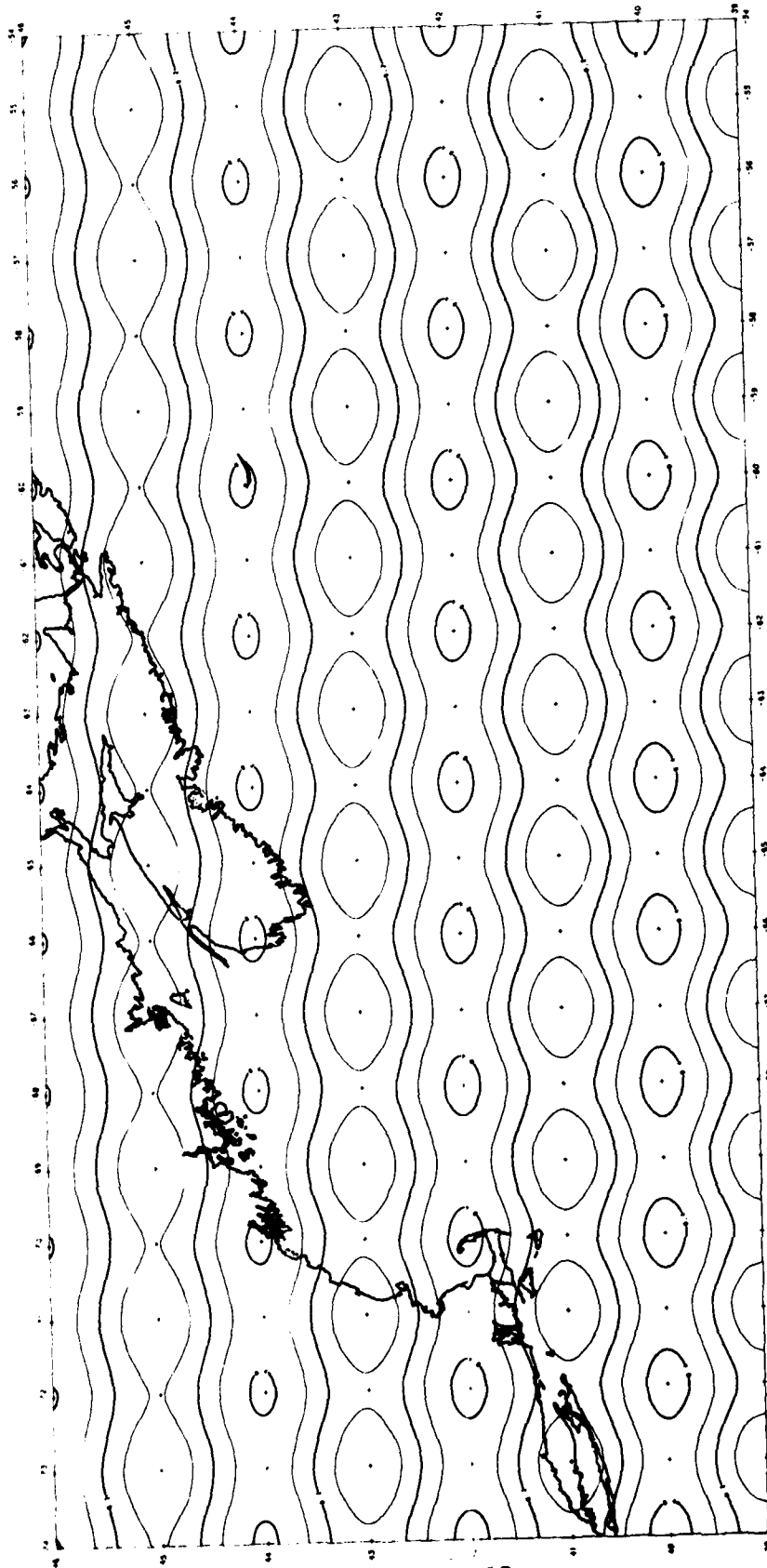
REGIONAL GEOID (GEM 9 degree 10)



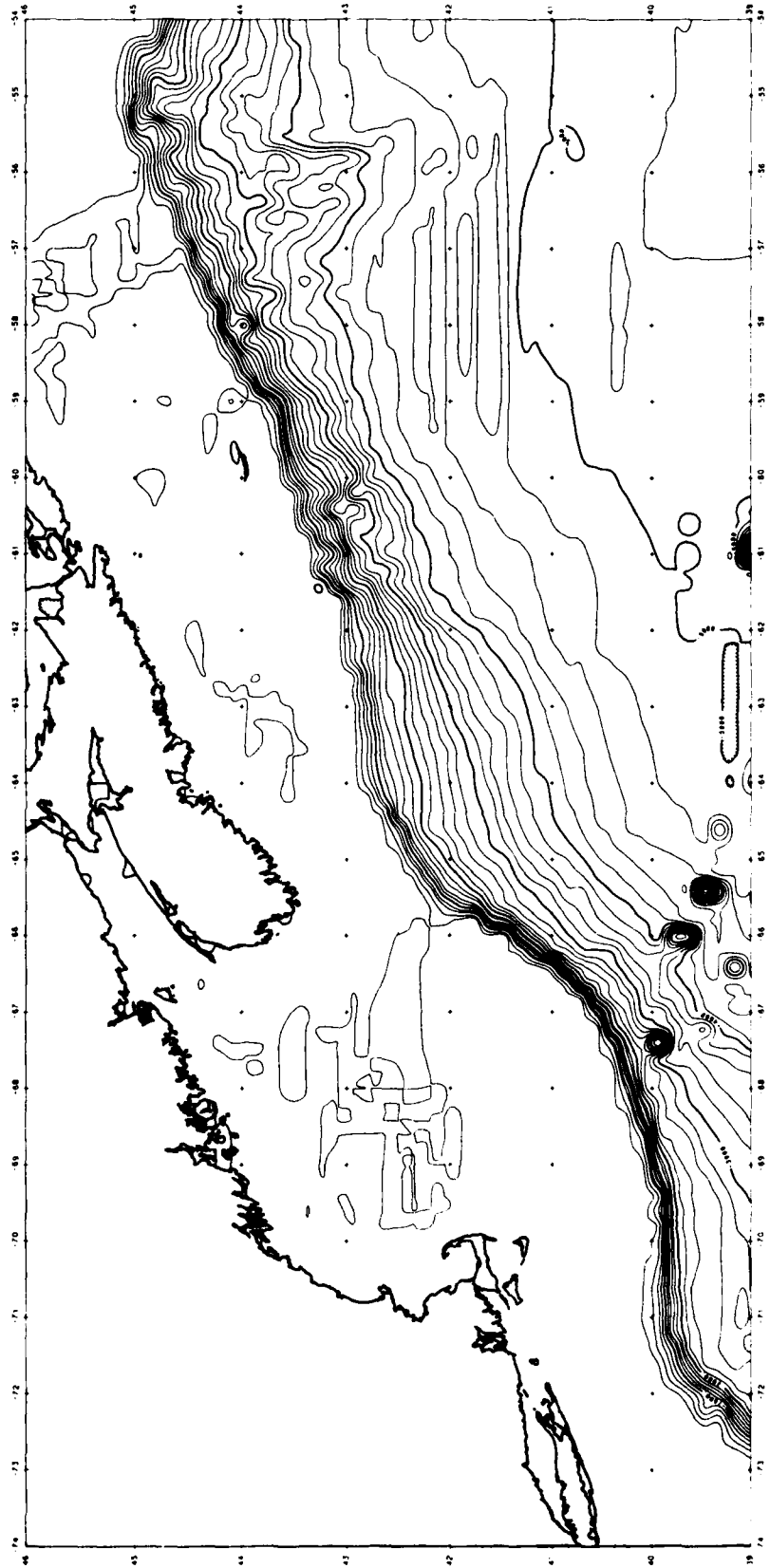
RESIDUAL GEOID



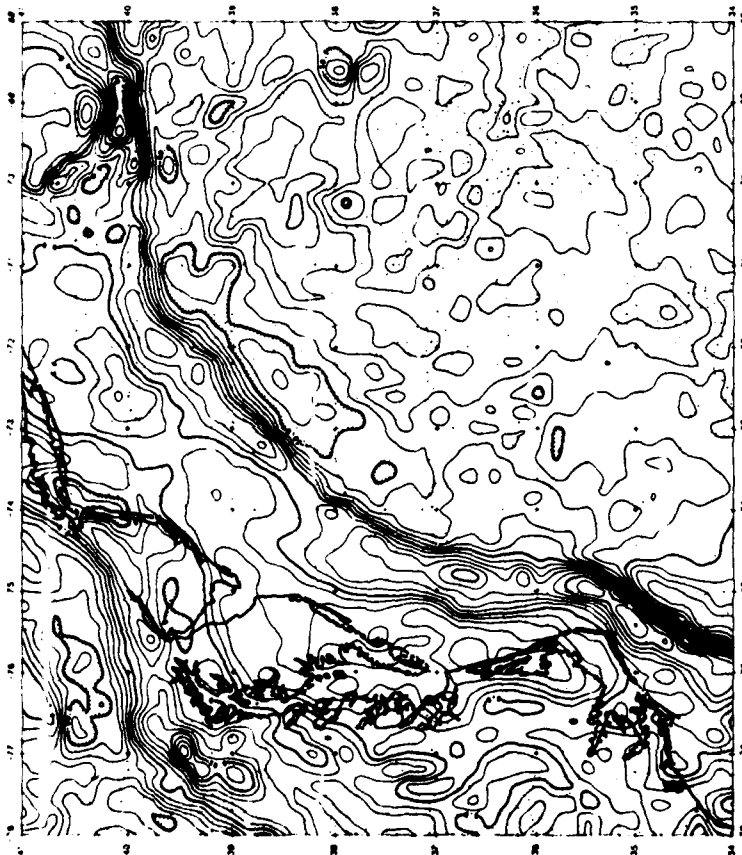
MAGNETIC CRUSTAL ANOMALY (MAGSAT)



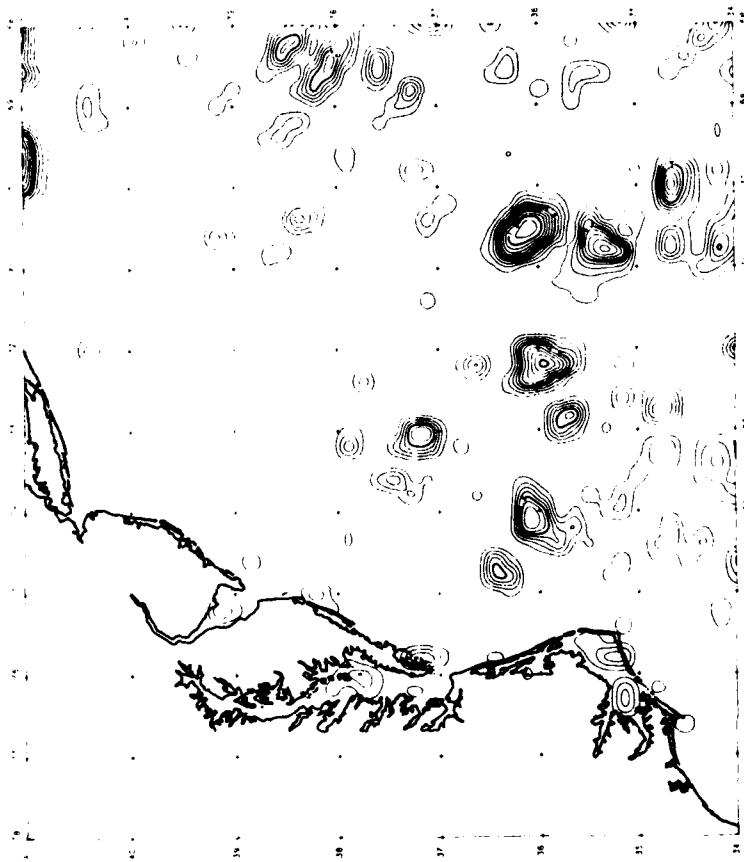
MAGNETIC CRUSTAL ANOMALY ERROR ESTIMATE



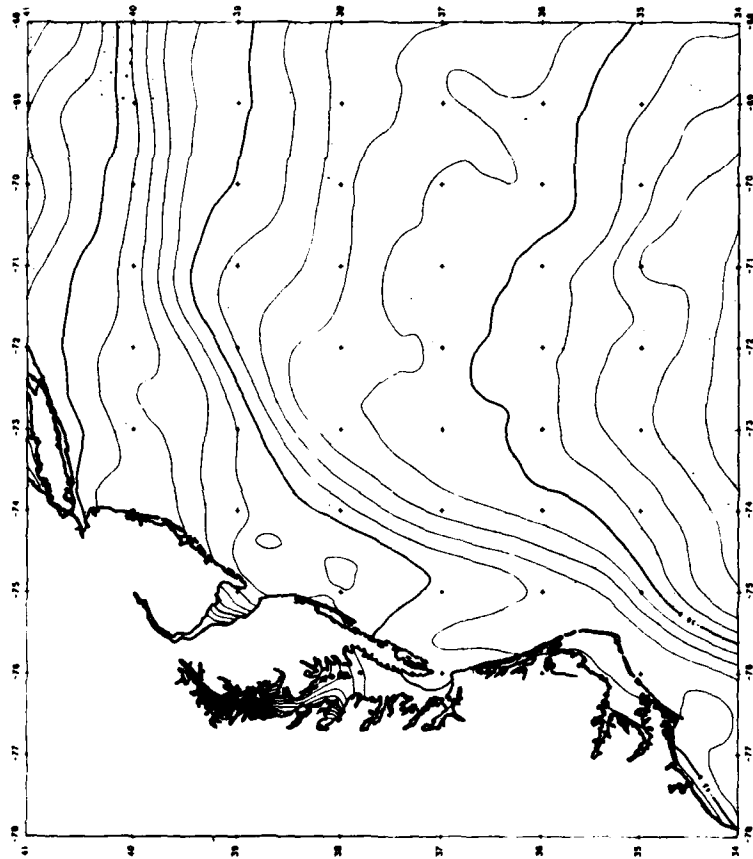
BATHYMETRY (SYNBAPS)



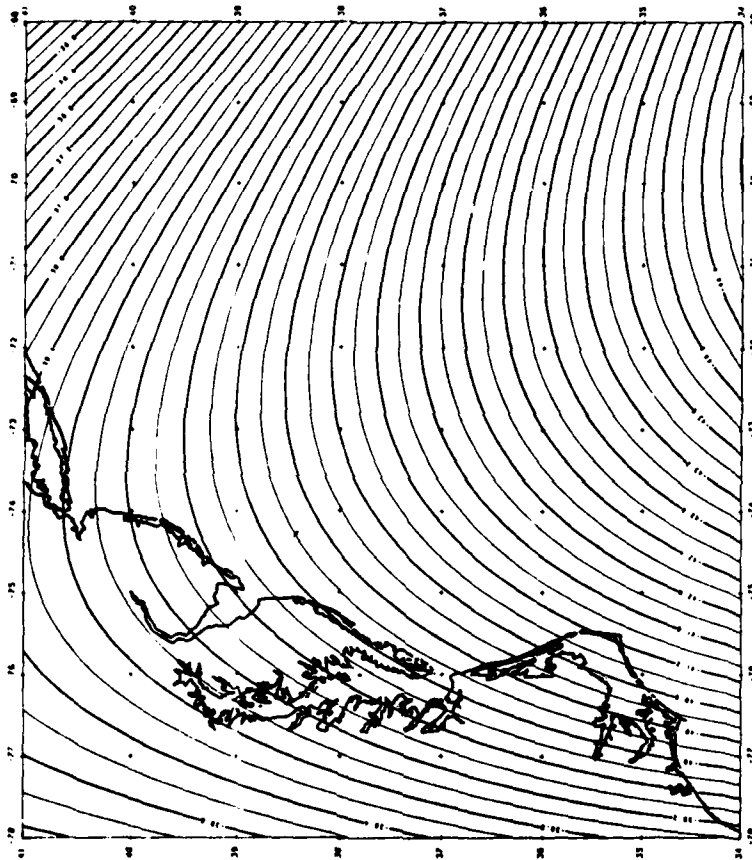
FREE-AIR GRAVITY ANOMALY



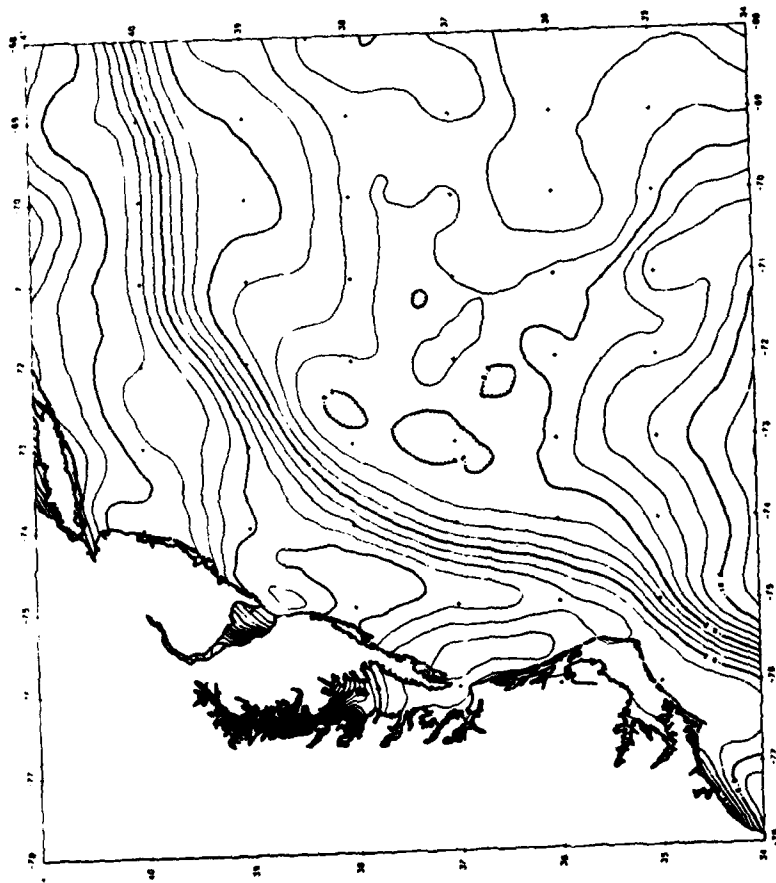
GRAVITY ERROR ESTIMATE



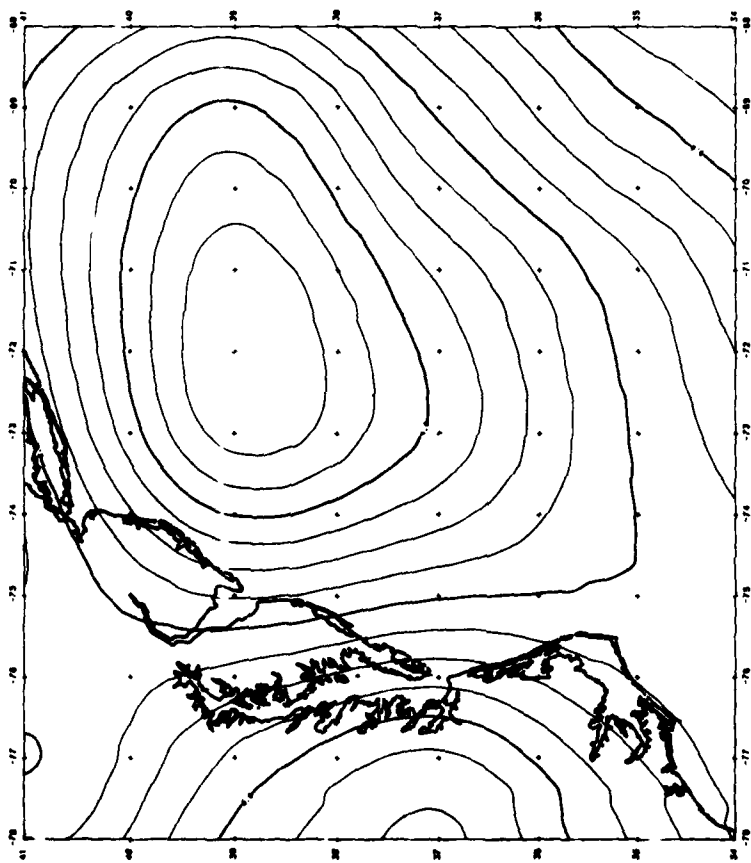
GEOS (GEOS-3)



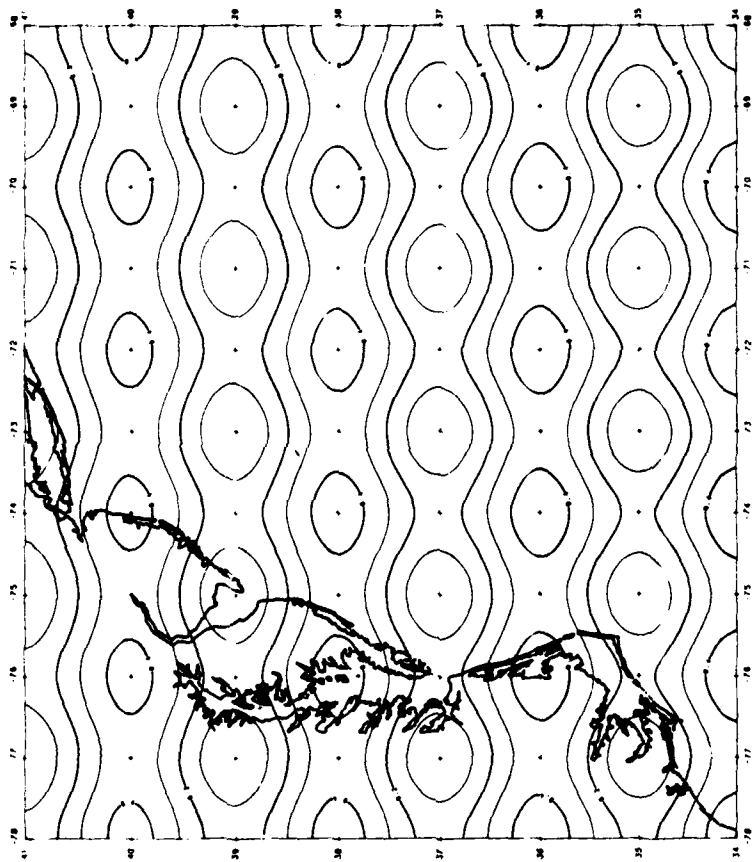
REGIONAL GEOID (GEM 9 degree 10)



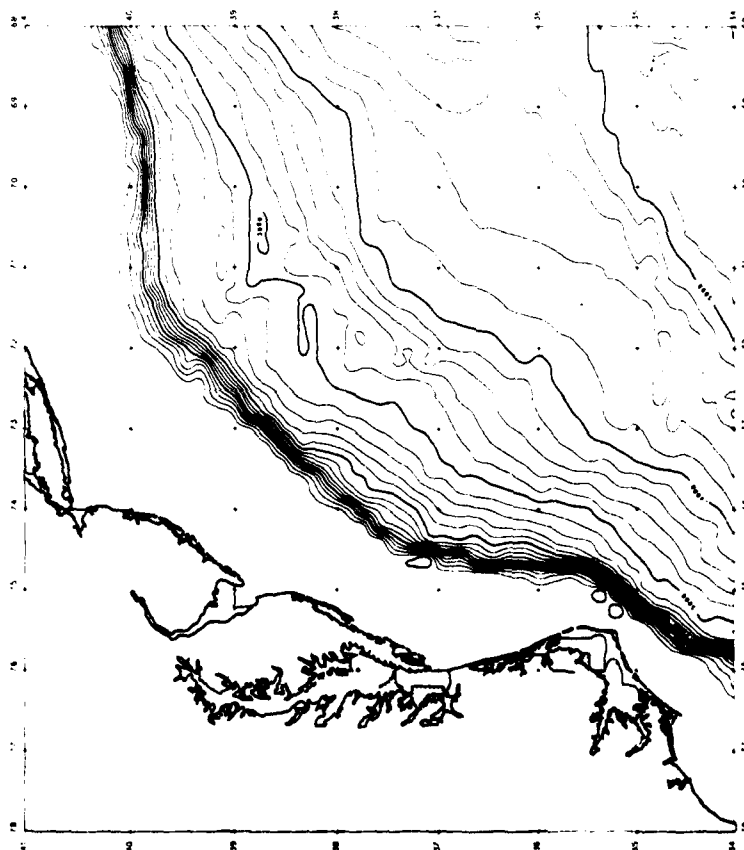
RESIDUAL GEOID



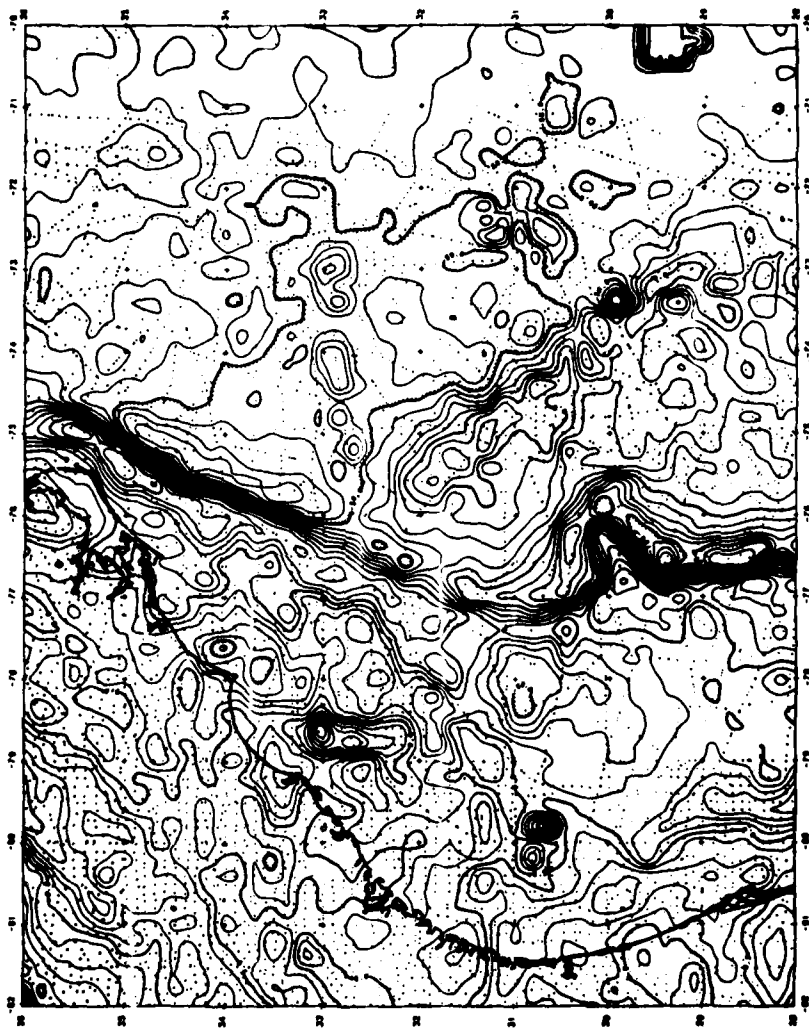
MAGNETIC CRUSTAL ANOMALY (MAGSAT)



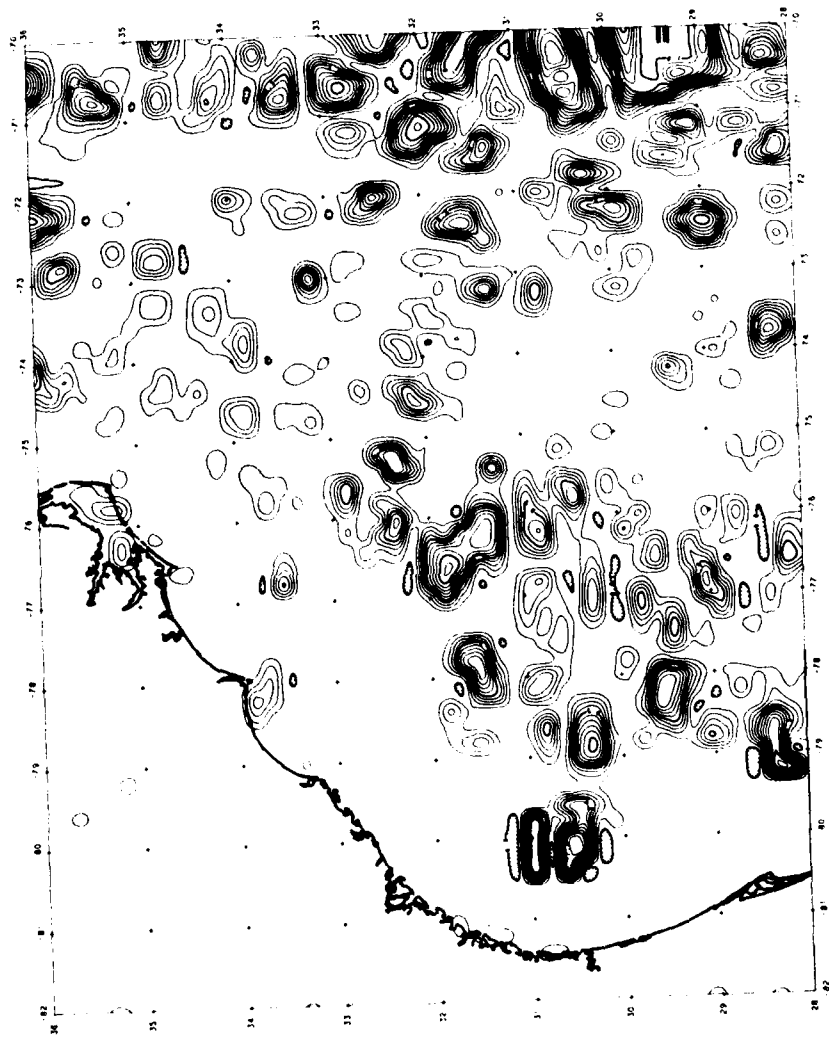
MAGNETIC CRUSTAL ANOMALY ERROR ESTIMATE



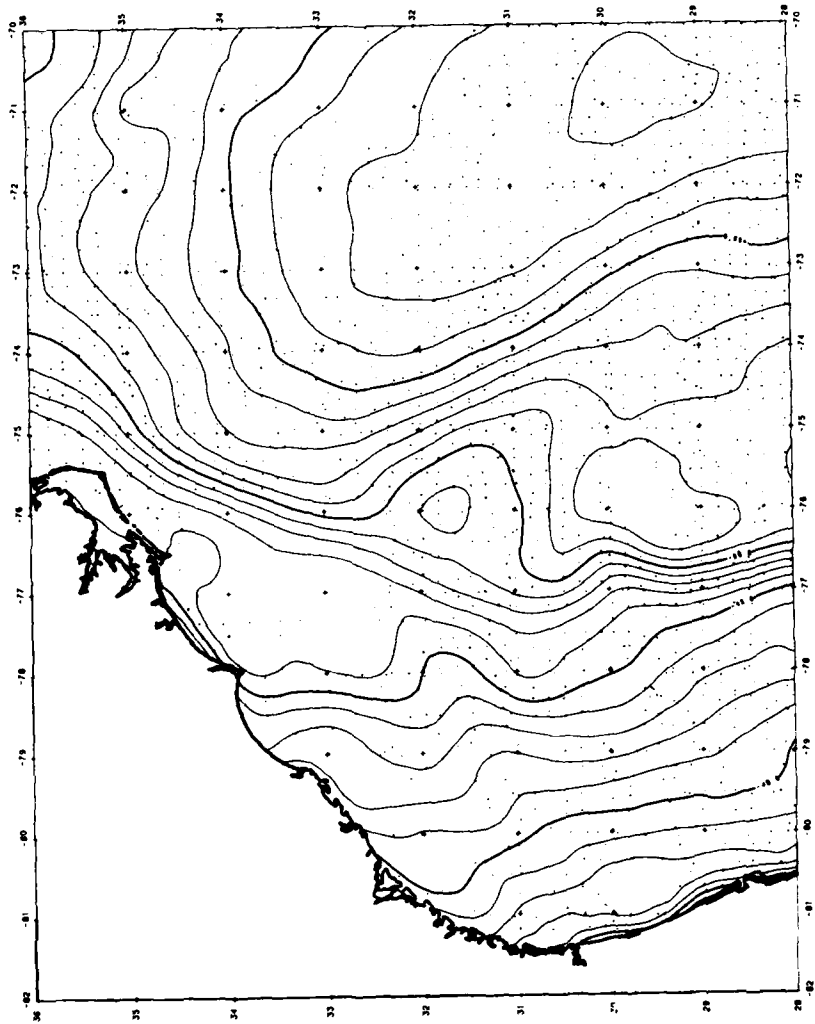
BATHYMETRY (SYNBAPS)



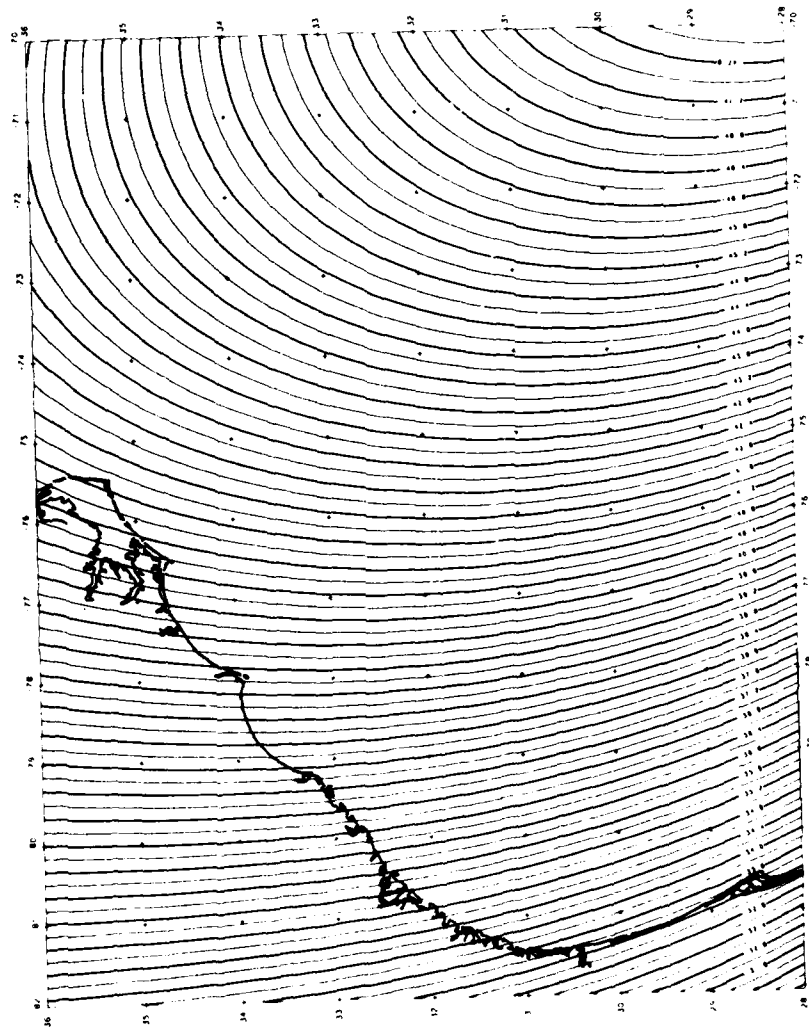
FREE-AIR GRAVITY ANOMALY



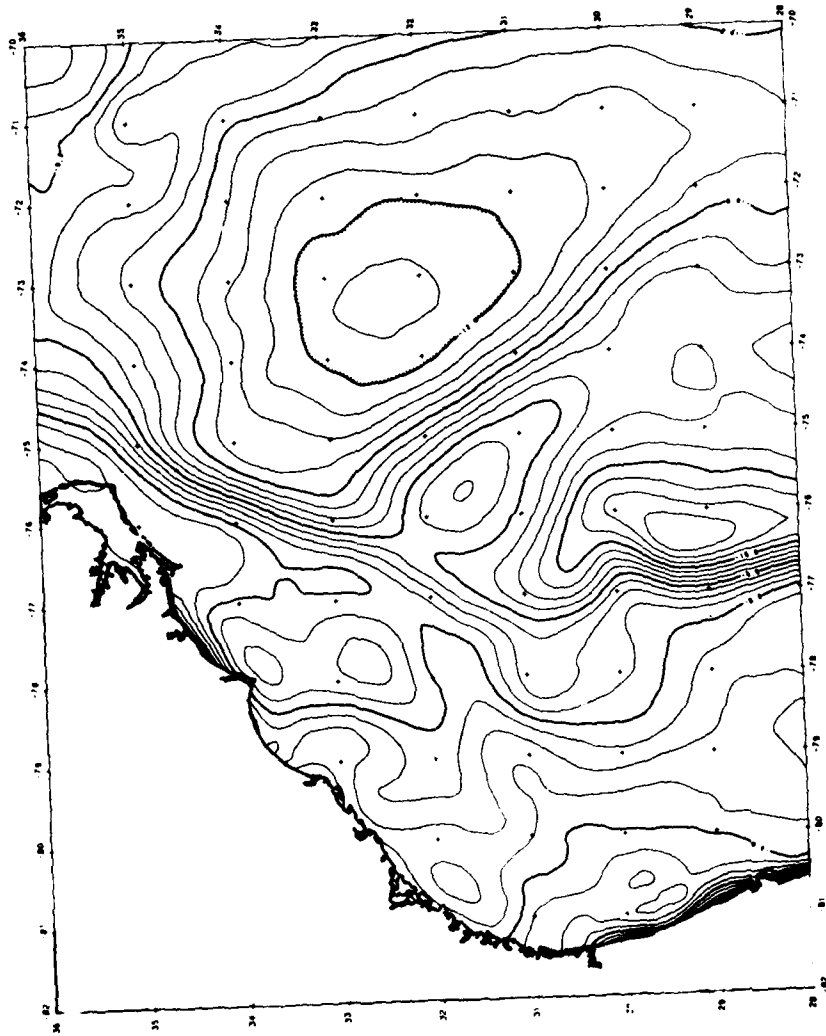
GRAVITY ERROR ESTIMATE



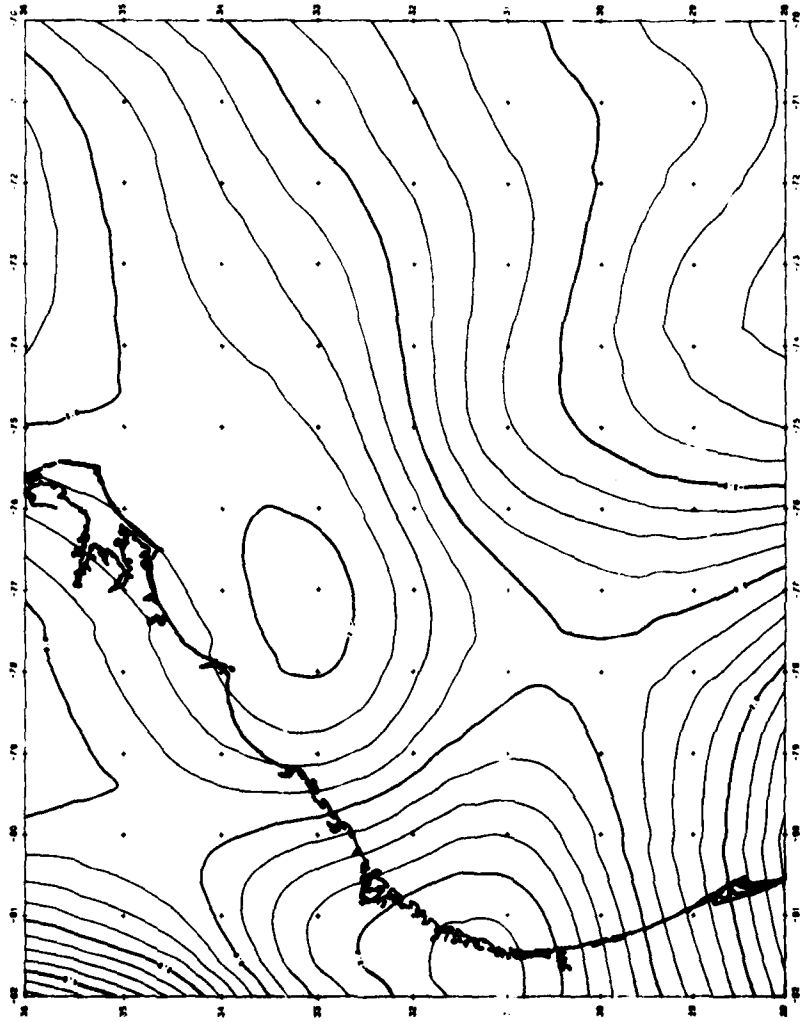
GEOS-3



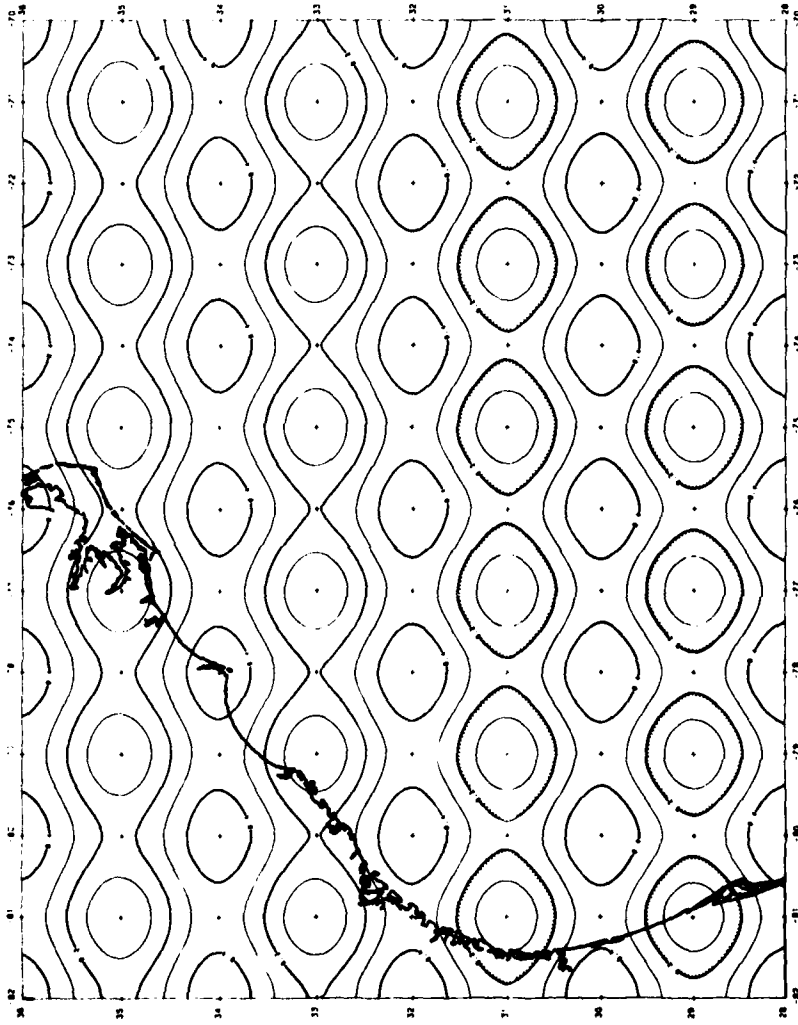
REGIONAL GEOID (GEM 9 degree 10)



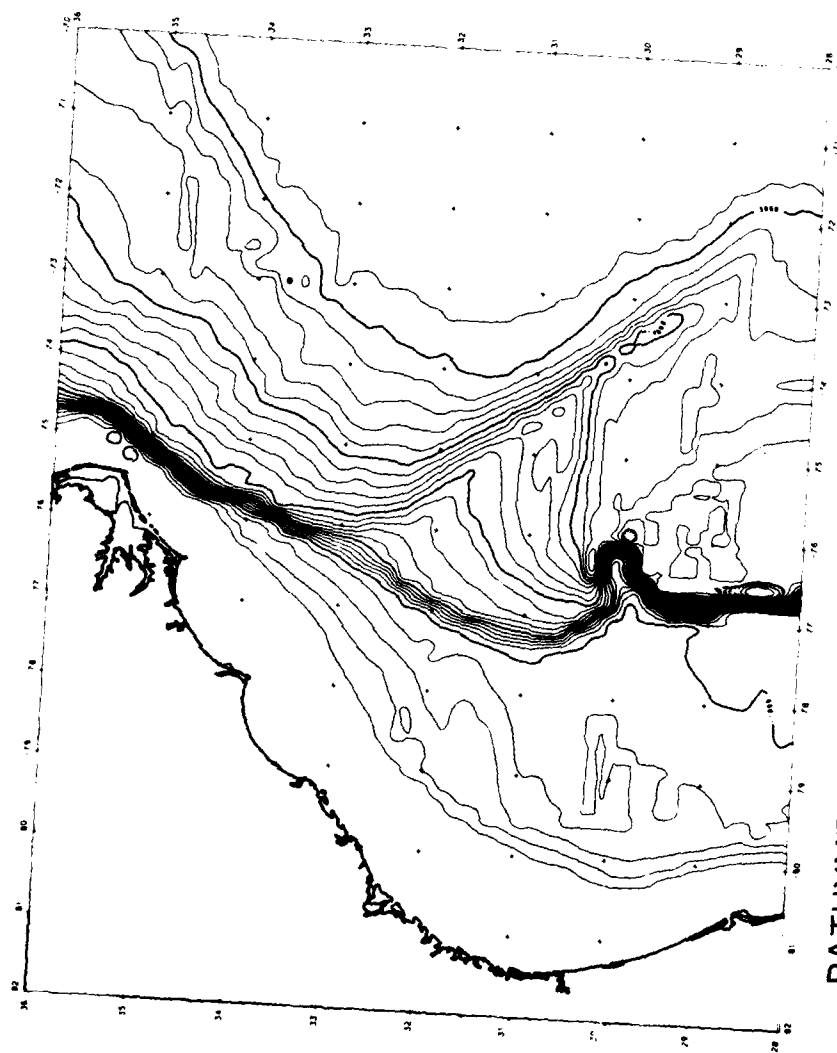
RESIDUAL GEOID



MAGNETIC CRUSTAL ANOMALY (MAGSAT)



MAGNETIC CRUSTAL ANOMALY ERROR ESTIMATE



BATHYMETRY (SYNBAPS)

MANDATORY DISTRIBUTION LIST

FOR UNCLASSIFIED TECHNICAL REPORTS, REPRINTS, AND FINAL REPORTS
PUBLISHED BY OCEANOGRAPHIC CONTRACTORS
OF THE OCEAN SCIENCE AND TECHNOLOGY DIVISION
OF THE OFFICE OF NAVAL RESEARCH

(REVISED NOVEMBER 1978)

- 1 Deputy Under Secretary of Defense
(Research and Advanced Technology)
Military Assistant for Environmental Science
Room 3D129
Washington, D.C. 20301
- Office of Naval Research
800 North Quincy Street
Arlington, VA 22217
- 3 ATTN: Code 483
1 ATTN: Code 460
2 ATTN: 102B
- 1 CDR Joe Spigai, (USN)
ONR Representative
Woods Hole Oceanographic Inst.
Woods Hole, MA 02543
- Commanding Officer
Naval Research Laboratory
Washington, D.C. 20375
- 6 ATTN: Library, Code 2627
- 12 Defense Technical Information Center
Cameron Station
Alexandria, VA 22314
ATTN: DCA
- Commander
Naval Oceanographic Office
NSTL Station
Bay St. Louis, MS 39522
- 1 ATTN: Code 8100
1 ATTN: Code 6000
1 ATTN: Code 3300
- 1 NODC/NOAA
Code D781
Wisconsin Avenue, N.W.
Washington, D.C. 20235
- 1 Mr. Michael H. Kelly
Administrative Contracting Officer
Department of the Navy
Office of Naval Research
Eastern/Central Regional Office
Building 114, Section D
666 Summer Street
Boston, MA 02210

Woods Hole Oceanographic Institution
WHOI-81-104

COMPUTER-PROCESSED GEOPHYSICAL ATLAS OF DIGITAL DATA FOR THE EAST COAST MARGIN OF THE UNITED STATES FROM SURFACE AND SPACECRAFT DATA by Carl Bowin, Julie Milligan and Karen Dunlap. 32 pages. December 1981. Prepared for the Office of Naval Research under Contract N00014-82-C-0019 and for Joint Oceanographic Institutions, Inc. under subcontracts 20-81, 24-81 and 21-81.

This atlas comprises maps for the East Coast margin of the United States of free-air gravity anomaly, geoid anomaly, regional geoid anomaly, residual geoid anomaly, magnetic crustal anomaly, and bathymetry. Data from surface measurements, GEOS-III and NGSAT Satellites, GPS-9 spherical harmonic coefficients, and SYMAPS bathymetry profiling system were utilized. Estimated error maps for the geoid data are not included because for the marine areas, these data are uniformly of very low error. The data are presented in three sets of maps of northern, central, and southern portions of the margin.

Digital data display: geophysical data

1. Digital data display: geophysical data

2. Geographical data processing

3. East coast margin of the United States

I. Bowin, Carl

II. Milligan, Julie

III. Dunlap, Karen

IV. N00014-82-C-0019

This card is UNCLASSIFIED

Woods Hole Oceanographic Institution
WHOI-81-104

COMPUTER-PROCESSED GEOPHYSICAL ATLAS OF DIGITAL DATA FOR THE EAST COAST MARGIN OF THE UNITED STATES FROM SURFACE AND SPACECRAFT DATA by Carl Bowin, Julie Milligan and Karen Dunlap. 32 pages. December 1981. Prepared for the Office of Naval Research under Contract N00014-82-C-0019 and for Joint Oceanographic Institutions, Inc. under subcontracts 20-81, 24-81 and 21-81.

This atlas comprises maps for the East Coast margin of the United States of free-air gravity anomaly, geoid anomaly, regional geoid anomaly, residual geoid anomaly, magnetic crustal anomaly, and bathymetry. Data from surface measurements, GEOS-III and NGSAT Satellites, GPS-9 spherical harmonic coefficients, and SYMAPS bathymetry profiling system were utilized. Estimated error maps for the geoid data are not included because for the marine areas, these data are uniformly of very low error. The data are presented in three sets of maps of northern, central, and southern portions of the margin.

Woods Hole Oceanographic Institution
WHOI-81-104

COMPUTER-PROCESSED GEOPHYSICAL ATLAS OF DIGITAL DATA FOR THE EAST COAST MARGIN OF THE UNITED STATES FROM SURFACE AND SPACECRAFT DATA by Carl Bowin, Julie Milligan and Karen Dunlap. 32 pages. December 1981. Prepared for the Office of Naval Research under Contract N00014-82-C-0019 and for Joint Oceanographic Institutions, Inc. under subcontracts 20-81, 24-81 and 21-81.

This atlas comprises maps for the East Coast margin of the United States of free-air gravity anomaly, geoid anomaly, regional geoid anomaly, residual geoid anomaly, magnetic crustal anomaly, and bathymetry. Data from surface measurements, GEOS-III and NGSAT Satellites, GPS-9 spherical harmonic coefficients, and SYMAPS bathymetry profiling system were utilized. Estimated error maps for the geoid data are not included because for the marine areas, these data are uniformly of very low error. The data are presented in three sets of maps of northern, central, and southern portions of the margin.

Digital data display: geophysical data

2. Geographical data processing

3. East coast margin of the United States

I. Bowin, Carl

II. Milligan, Julie

III. Dunlap, Karen

IV. N00014-82-C-0019

This card is UNCLASSIFIED

Woods Hole Oceanographic Institution
WHOI-81-104

COMPUTER-PROCESSED GEOPHYSICAL ATLAS OF DIGITAL DATA FOR THE EAST COAST MARGIN OF THE UNITED STATES FROM SURFACE AND SPACECRAFT DATA by Carl Bowin, Julie Milligan and Karen Dunlap. 32 pages. December 1981. Prepared for the Office of Naval Research under Contract N00014-82-C-0019 and for Joint Oceanographic Institutions, Inc. under subcontracts 20-81, 24-81 and 21-81.

This atlas comprises maps for the East Coast margin of the United States of free-air gravity anomaly, geoid anomaly, regional geoid anomaly, residual geoid anomaly, magnetic crustal anomaly, and bathymetry. Data from surface measurements, GEOS-III and NGSAT Satellites, GPS-9 spherical harmonic coefficients, and SYMAPS bathymetry profiling system were utilized. Estimated error maps for the geoid data are not included because for the marine areas, these data are uniformly of very low error. The data are presented in three sets of maps of northern, central, and southern portions of the margin.

Digital data display: geophysical data

2. Geographical data processing

3. East coast margin of the United States

I. Bowin, Carl

II. Milligan, Julie

III. Dunlap, Karen

IV. N00014-82-C-0019

This card is UNCLASSIFIED

DATE
FILMED
— 8