

AD-A111 799

NAVAL TRAINING EQUIPMENT CENTER ORLANDO FL
DISTRIBUTION OF MONOCHROME SCREEN LUMINANCE IN THE CTOL VISUAL --ETC(U)
NOV 80 J R OWEN

F/6 5/9

UNCLASSIFIED

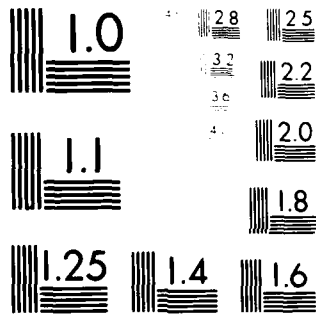
NAVTRAEQUIPC-IH-328

NL

1 of 1
AD-A
111 799



END
DATE
FILMED
10-82
DTIC



MICROCOPY RESOLUTION TEST CHART
NBS 1963-A

(12) *fw*



AD A111799

TECHNICAL REPORT: NAVTRAEQUIPCEN IH-328

DISTRIBUTION OF MONOCHROME SCREEN LUMINANCE IN
THE CTOL VISUAL TECHNOLOGY RESEARCH SIMULATOR

Joseph R. Owen
Naval Training Equipment Center

November 1980

DTIC
SELECTED
MAR 9 1982
H

DWG FILE COPY

DoD Distribution Statement
Approved for Public Release,
Distribution unlimited.

NAVAL TRAINING EQUIPMENT CENTER
ORLANDO FLORIDA 32813

etc

82 03 08 168

TECHNICAL REPORT: NAVTRAEQUIPCEN IH-328

DISTRIBUTION OF MONOCHROME SCREEN LUMINANCE IN THE
CTOL VISUAL TECHNOLOGY RESEARCH SIMULATOR

JOSEPH R. OWEN
Advanced Simulation Concepts Laboratory
Visual Technology Research Simulator, Code N-732
Naval Training Equipment Center
Orlando, FL 32813

GOVERNMENT RIGHTS IN DATA STATEMENT

Reproduction of this publication in
whole or in part is permitted for
any purpose of the United States
Government.

Approved:

G. V. AMICO
Director, Research Department

A. M. SPOONER
Head, Advanced Simulation Concepts Laboratory

Naval Training Equipment Center
Orlando, Florida 32813

NAVTRAEQUIPCEN IH-328

TABLE OF CONTENTS

<u>Section</u>		<u>Page</u>
	PREFACE	3
I	INTRODUCTION	4
II	MEASUREMENT	7
	MEASUREMENT 1, BACKGROUND DISPLAY	7
	MEASUREMENT 2, TARGET DISPLAY	7
	MEASUREMENT 3, COMPOSITE DAY DISPLAY	7
	MEASUREMENT 4, COMPOSITE NIGHT DISPLAY	10
III	CONCLUSION	13
	REFERENCES	14



Accession For	
NTIS Grant	<input checked="" type="checkbox"/>
DTIC Tab	<input type="checkbox"/>
Unannounced	<input type="checkbox"/>
Justification	
By _____	
Distribution of _____	
Availability Status _____	
Dist. _____	
A	

NAVTRAEQUIPCEN IH-328

LIST OF ILLUSTRATIONS

<u>Figure</u>		<u>Page</u>
1	VTRS/CTOL Display Configuration.	5
2	Background Display, CTOL	8
3	Target Display, CTOL	9
4	CTOL Day Carrier Landing Display FOV	11
5	CTOL Night Carrier Landing Display FOV	12

LIST OF TABLES

<u>Table</u>		<u>Page</u>
1	LUMINANCE MEASUREMENTS CTOL DAY CARRIER LANDING DISPLAY FOV.	10
2	LUMINANCE MEASUREMENTS CTOL NIGHT CARRIER LANDING DISPLAY FOV	10

PREFACE

This report provides support information for the Visual Technology Research Simulator located at NAVTRAEQUIPCEN, Code N-732, Orlando, Florida. It provides detailed equipment characteristics not usually included in experimental reports to supplement them for interpretation of results. This report deals with monochrome display brightness and contrast, and will be updated for color displays. Other reports giving detailed VTRS engineering characteristics will be published as data is generated and equipment modified. The next report will provide a complete description of system dynamics including visual and motion hardware time response and system time lag.

The author wishes to acknowledge the technical assistance provided by Walter S. Chambers in the preparation of this report.

SECTION I
INTRODUCTION

The Visual Technology Research Simulator (VTRS) Conventional Take Off and Landing (CTOL) simulator utilizes a ten foot radius dome to provide a wide angle viewing screen. Detailed descriptions of the system are given in references 1, 2, and 3 and display geometry shown in Figure 1. The screen has a smooth surface finished with an aluminum paint which has an average gain of 2 from the pilot's viewpoint. The visual displays are provided by two TV projectors which are General Electric Monochrome Light Valves, Model 4PJ 7150A2. The projectors are specified as having a minimum modulated output of 1,000 lumens. They are typically rated with a modulated output of 1,250 lumens. The projectors have a typical contrast ratio of 100:1 with a minimum of 75:1.

The background projector's Field of View (FOV) has an azimuth of 160° and an elevation of 80°. This provides a display area of 345 square feet. The wide angle optics designed by Singer Link have an axial transmission factor of 0.85. This is added to the projector T-6 lens which was slightly modified and designated T-6M.

The target projector FOV has an azimuth of 55°, an elevation of 43° and a diagonal dimension of 66°. This provides a target display area of 73 square feet. The target projector optics incorporate a 10:1 zoom lens (66° diagonal to 6.6° diagonal). Transmission factor of the target projector optics is 0.25. These optics are quite complex and include the T-6M, beam splitter, derotation prism, relay optics, 3 corner reflectors and the zoom lens. The target projector FOV is servo driven in azimuth and elevation and can be dynamically moved to any position within the background FOV.

Screen luminance can be predicted by using the equation:

$$\text{Foot Lamberts} = \frac{\text{Lumens} \times \text{Transmission Factor} \times \text{Screen Gain}}{\text{Display Area (Square Feet)}}$$

$$\text{Background Luminance} = \frac{1000 \times 0.85 \times 2}{345} = 4.9 \text{ Foot Lamberts}$$

$$\text{Target Luminance} = \frac{1000 \times 0.25 \times 2}{73} = 6.7 \text{ Foot Lamberts}$$

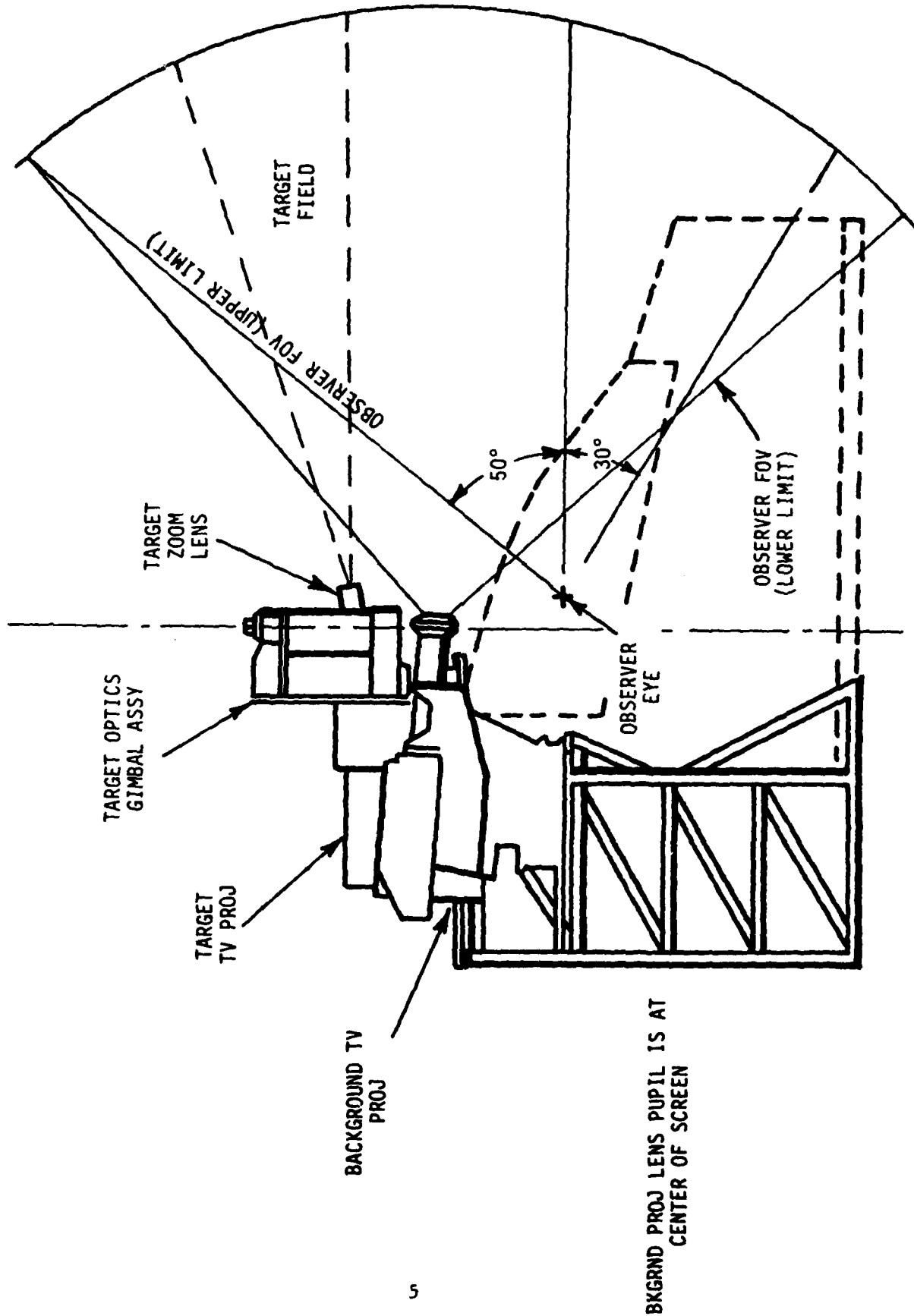


Figure 1. VTRS/CTOL Display Configuration

NAVTRAEQUIPCEN IH-328

The target projector optics has a servo operated variable density filter which provides a near constant brightness as the zoom lens FOV varies from 66° to 6.6° diagonally. At 66° the filter attenuates the brightness by 10% and increases attenuation with increasing zoom to hold brightness constant. This filter is also set to a bias level to keep the target projector's dark field from being visible and creating a halo effect around the projected target image.

In order to reduce bleed through of the background image display to the target image display when the two are presented together, a blue filter was placed in series with the background optics. The addition of the filter provided a higher contrast ratio between the background and target image displays. An additional effect of the filter was the pleasing blue tint it gave to the sky and sea background display.

This description of the display system and the measurements reported herein are representative of the VTRS CTOL system during the period of 1978 through 1980. The conversion of the displays to color will change the displays beginning in 1981. A later report will provide data on the color CTOL display.

SECTION II

MEASUREMENT

MEASUREMENT 1, BACKGROUND DISPLAY

Figure 2 shows three plots of brightness measured in foot lamberts in relations to FOV in degrees. Ten shades of grey were displayed across a FOV of 160° in azimuth and 80° in elevation. These shades of grey were the result of ten (10) equal steps of video input to the projector. Curve 1 of Figure 2 depicts the response measured from the pilot's viewpoint. Curve 2 of Figure 2 depicts the same response with the blue background filter inserted.

Curve 3 of Figure 2 shows the response obtained at the center of the FOV by applying all ten shades of grey one at a time in a flat field mode. The background display operating independently has a maximum luminance of 4 foot lamberts and a contrast ratio of 80:1.

MEASUREMENT 2, TARGET DISPLAY

Figure 3 shows the plots of 4 curves which are measured in foot lamberts in relation to the FOV in degrees. Ten shades of grey were displayed across a FOV of 60° . These shades of grey were the result of ten (10) equal steps of video input to the projector. Curve 1 of Figure 3 depicts the response obtained at the pilot's viewpoint. Curve 2 of Figure 3 shows the response measured at the center of the FOV by applying all ten shades of grey one at a time in a flat field mode with a 60° FOV. Curves 3 and 4 depict the same mode measured at 30° and 10° respectively. The target display operating independently has a maximum luminance of 6.4 to 10 foot lamberts depending on FOV and a maximum contrast ratio of 100:1.

MEASUREMENT 3, COMPOSITE DAY DISPLAY

By combining the two displays the VTRS has been able to achieve high fidelity visual simulation in the CTOL carrier landing mode. The two displays provide the pilot trainee a target image that possesses high resolution with excellent detail clarity and realistic dynamic movement coupled with the background image that provides wide angle peripheral scenes.

Figure 4 shows the effects of combining the background and target displays with a CIG video signal rather than the test patterns used in Measurements 1 and 2. Figure 4 presents a view of the carrier on a clear day at 1000' from the ramp. Table 1 provides the measurement of luminance distribution in foot lamberts of significant segments of the composite display. Two quantities are presented for luminance, with a background blue filter, and without. Most experiments were conducted with the filter present. The maximum luminance for this day composite display was 4 foot lamberts with a contrast ratio of 8:1.

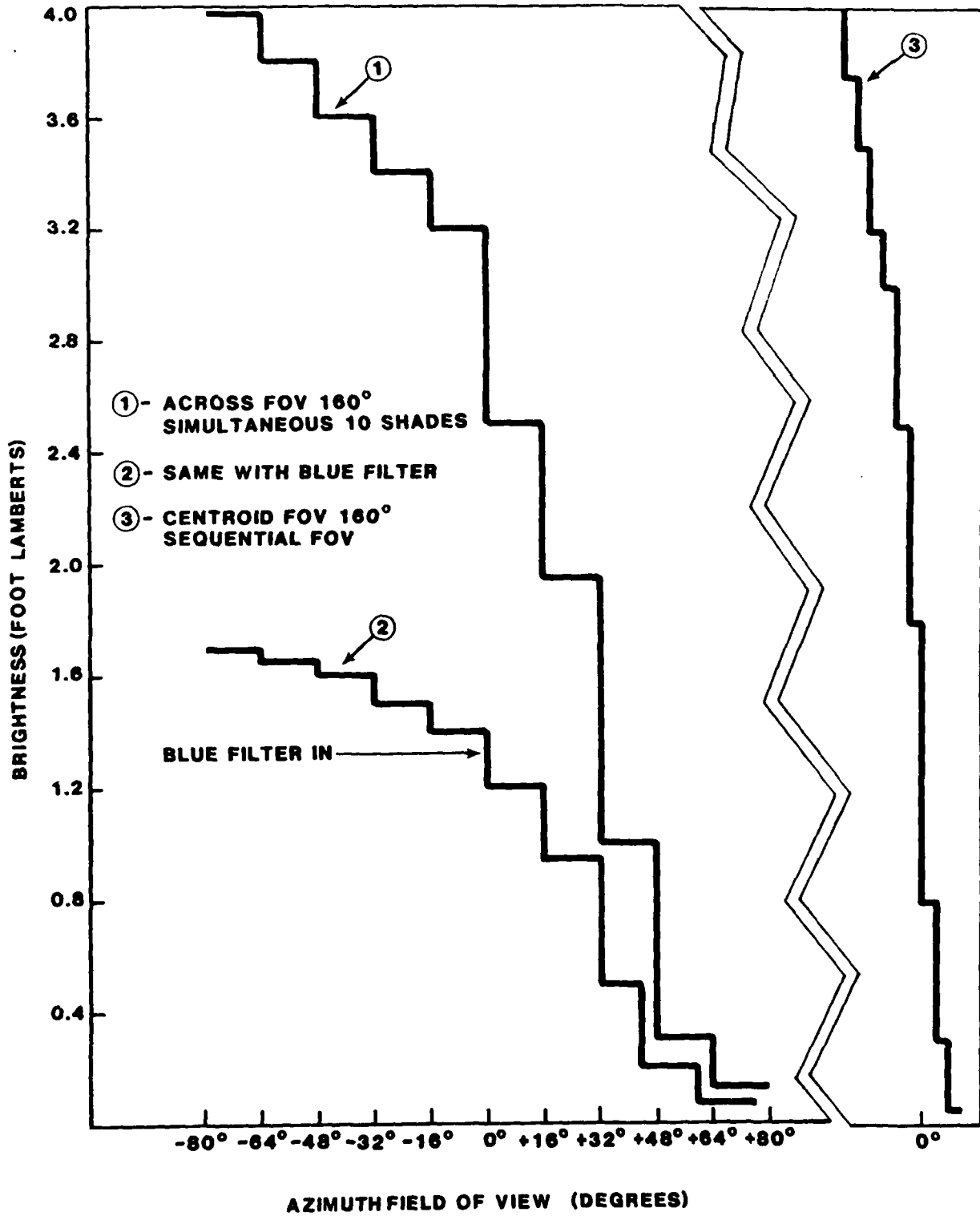


Figure 2. Contrast Test Pattern Brightness Plot of Background Display, CTOL

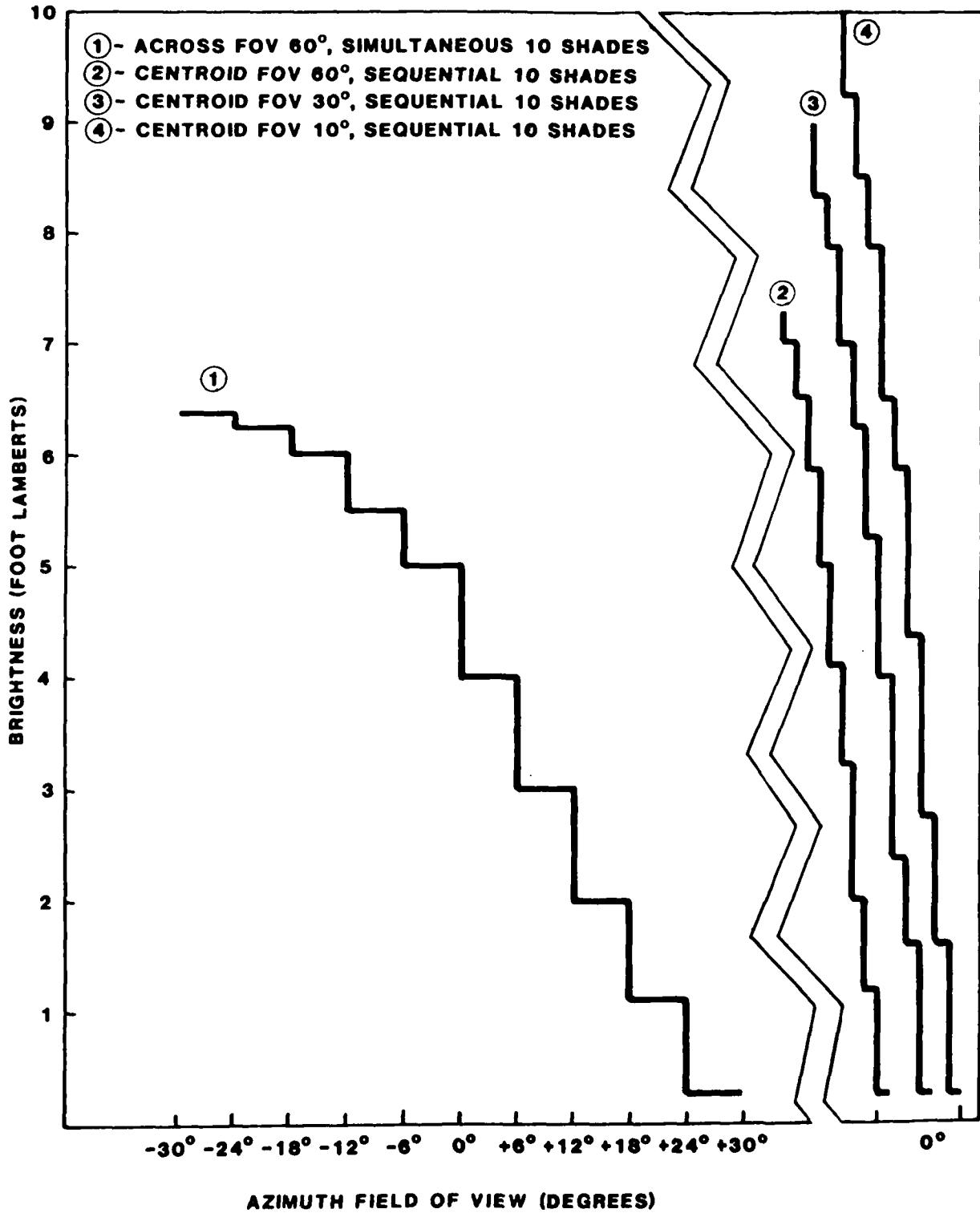


Figure 3. Contrast Test Pattern Brightness Plot of Target Display, CTOL

NAVTRAEQUIPCEN IH-328

In these tests the target projector was driven by the Computer Image Generator (CIG) providing a carrier, Fresnel Lens Optical Landing System (FLOLS), and wake image only (no sky or sea). The background projector was driven by a flying spot scanner providing a seascape image and special effects circuitry providing sky, horizon, and seamerge imagery.

TABLE 1. LUMINANCE MEASUREMENTS CTOL DAY CARRIER
LANDING DISPLAY FOV (Foot Lamberts)

<u>ELEMENT</u>	<u>FILTER</u>	<u>NO FILTER</u>
1. Sky (+30° elevation)	0.85	1.5
2. Sky (+5° elevation)	0.84	1.6
3. Sea (-5° elevation)	0.62	1.2
4. Sea highlight (-15° elevation)	0.66	1.2
5. Sea (-15° elevation)	0.50	0.98
6. Carrier ramp (white)	4.0	4.5
7. Carrier runway lines	3.8	4.2
8. Carrier runway	2.5	3.5
9. FLOLS* Meatball**	2.0	2.4
10. FLOLS Background	0.68	1.3

*Fresnal Lens Optical Landing System. (Standard U.S. Navy carrier optical landing device).

**Meatball is the light source of the FLOLS which the pilot uses for glideslope information in a carrier approach and landing.

MEASUREMENT 4, COMPOSITE NIGHT DISPLAY

Figure 5 shows the same FOV of the background and target displays at night, 1000' to the ramp. Table 2 provides the luminance distribution in foot lamberts of the composite night display.

TABLE 2. LUMINANCE MEASUREMENTS CTOL NIGHT CARRIER
LANDING DISPLAY FOV (Foot Lamberts)

1. Carrier Deck Runway Lighting	1.5
2. Carrier Runway Area	0.048
3. FLOLS Meatball	0.6

Figure 5 also shows the blending of sea and sky background display which highlights the deck lighting and FLOLS at night. The image generation sources for this test were the same as measurement 3 but with a night data base model for a special effects setting. The night display can also be set with no sky or horizon visible. The maximum luminance of this night display was 1.5 foot lamberts and a contrast ratio of 30:1.

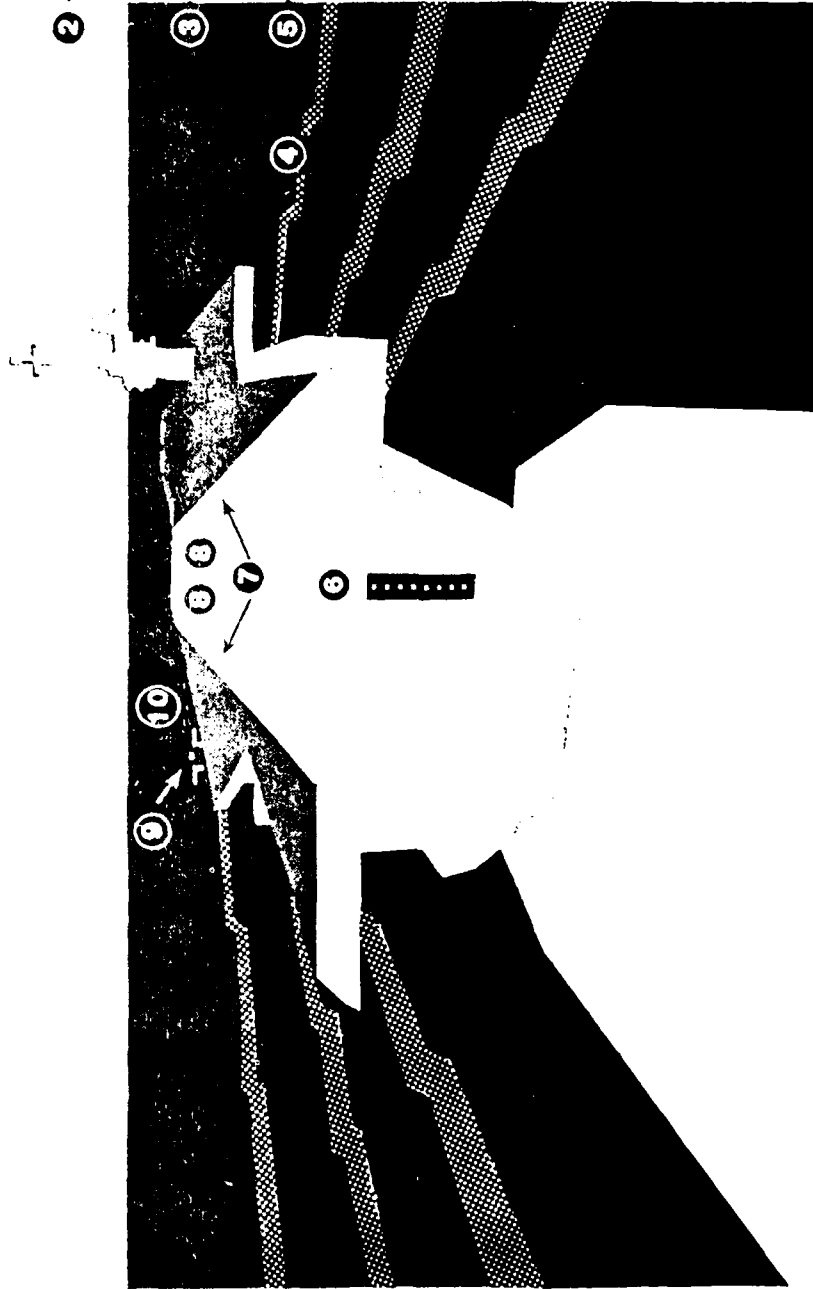
① — +30°

② — +5°

HORIZON

③ — -5°

④ — -15°



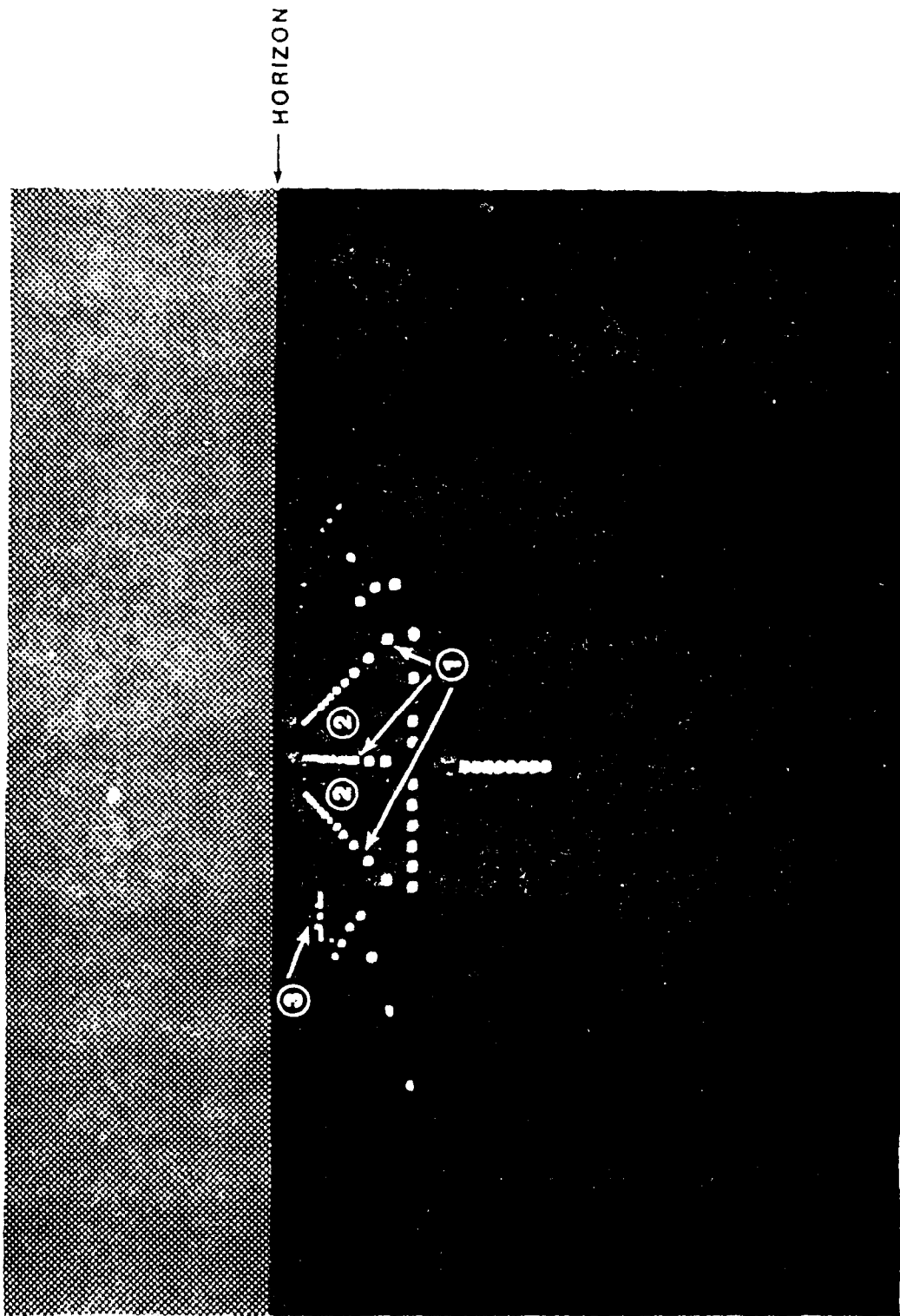
- 1. SKY (+30° ELEVATION)
- 2. SKY (+5° ELEVATION)
- 3. SEA (-5° ELEVATION)

- 4. SEA HIGHLIGHT (-15° ELEVATION)
- 5. SEA (-15° ELEVATION)
- 6. CARRIER RAMP (WHITE)
- 7. CARRIER RUNWAY LINES
- 8. CARRIER RUNWAY
- 9. FLOLS * MEATBALL **
- 10. FLOLS BACKGROUND

* FRESNEL LENS OPTICAL LANDING SYSTEM. (STANDARD U.S. NAVY CARRIER OPTICAL LANDING DEVICE)

** MEATBALL IS THE LIGHT SOURCE OF THE FLOLS WHICH THE PILOT USES FOR GLIDESLOPE INFORMATION IN A CARRIER APPROACH AND LANDING.

Figure 4. CTOL Day Carrier Landing Display FOV



- 1. CARRIER DECK RUNWAY LIGHTING
- 2. CARRIER RUNWAY AREA
- 3. FLOLS MEATBALL

Figure 5. CTOL Night Carrier Landing Display FOV

SECTION III

CONCLUSION

Luminance measurements of the VTRS CTOL carrier landing display for night and day were made and recorded for future reference. They are representative of monochrome display characteristics used during 1980 carrier landing experiments in VTRS. Measurements 1 and 2 give the maximum capabilities of the target and background displays independently of each other. Measurements 3 and 4 give a balanced capability of the composite display using both displays simultaneously. It can be seen that this balanced composite display does not make maximum use of each display's individual capability. The final composite display luminance levels are tradeoffs to minimize visual distractions due to the TV projector's non-black dark field and the zoom lens induced brightness variation with zoom. The carrier landing day scene had a highlight luminance of 4 foot lamberts and a contrast ratio of 8:1. The carrier landing night scene had a highlight luminance of 1.5 foot lamberts and a contrast ratio of 30:1. The lower day scene contrast is a direct result of cross screen reflectance inside the spherical display where large bright areas such as the sky illuminate and therefore wash out the contrast of the seascope and aircraft carrier image. This same effect extends into dynamic flight in that slight contrast change will occur with changes in aircraft attitude and position which change the ratio of light and dark areas in the overall display.

NAVTRAEQUIPCEN IH-328

REFERENCES

Chambers, W. S., AWAVS: An Engineering Simulator for Design of Visual Flight Training Simulators, Journal of Aircraft, Vol. 14, No. 11, November, 1977.

Fisher, R. A. and Lyons, R., AWAVS Trainer Subsystem Design Report, NAVTRAEQUIPCEN Technical Report No. 75-C-0009-13.

Kashork, E. F. and Turner, J. A., AWAVS: Visual System Performance, SPIE Vol. 162 Visual Simulation and Realism, 1978.

NAVTRAEQUIPCEN IH-328

DISTRIBUTION LIST

Naval Training Equipment Center Orlando, Florida 32813	60	AFOSR/NL (Dr. A. R. Fregley) Bolling AFB Washington, D.C. 20332	1
Commander HQ, TRADOC Attn: ATTNG-PA Ft. Monroe, Virginia 23651	1	Library Division of Public Documents Government Printing Office Washington, D.C. 20402	1
Center Library Naval Personnel Research and Development Center San Diego, California 92152	2	Director Training Analysis & Evaluation Group Department of the Navy Orlando, Florida 32813	2
Dr. Ralph R. Canter U.S. Army Research Institute Field Unit P. O. Box 16117 Fort Harrison, Indiana 46216	1	HumRRO/Western Division/Carmel Office 27857 Berwick Drive Carmel, California 93923	1
Defense Technical Information Center Cameron Station Alexandria, Virginia 22314	12	U.S. Coast Guard (G-P-1/62) 400 Seventh Street, SW Washington, D.C. 20590	1
AFHRL Technology Office Attn: MAJ Duncan L. Dieterly NASA-Ames Research Center MS 239-2 Moffett Field, California 94035	1	National Aviation Facilities Experimental Center Library Atlantic City, New Jersey 08405	1
Commanding Officer Air Force Office of Scientific Research Technical Library Washington, D.C. 20301	1	AFHRL/TSZ Brooks AFB, Texas 78235	1
OUSDRE (R&AT) (E&LS) CDR Paul R. Chatelier Room 3D129, The Pentagon Washington, D.C. 20301	1	Chief ARI Field Unit P. O. Box 476 Ft. Rucker, Alabama 36362	1

NAVTRAEQUIPCEN IH-328

DISTRIBUTION LIST (cont'd)

Dr. Jesse Orlansky Science and Technology Division Institute for Defense Analyses 400 Army-Navy Drive Arlington, Virginia 22202	1	Technical Library OUSDR&E Room 30122 Washington, D.C. 20301	1
Chief of Naval Operations OP-987H Attn: Dr. R. G. Smith Washington, D.C. 20350	1	Commander Naval Air Systems Command AIR 340F Attn: CDR C. Hutchins Washington, D.C. 20361	2
Scientific Technical Information Office NASA Washington, D.C. 20546	1	Capt. A. Ginsburg Aviation Vision Laboratory AFAMRL/HEA WPAFB, Ohio 45433	1
Dr. J. M. Rolfe Research Branch Hq. RAF Support Command RAF Upwood Huntington, Cambs UK	1	Mr. Ken Staples Flight Research Division Royal Aircraft Establishment Bedford MK41 6AE UK	1
Chief of Naval Operations OP-115 Attn: M. K. Malehorn Washington, D.C. 20350	1	Dr. Martin Tolcott Office of Naval Research 800 N. Quincy Street Department of the Navy Arlington, Virginia 22217	1
Technical Library Naval Training Equipment Center Orlando, Florida 32813	1	Commander Naval Air Development Center Attn: Technical Library Warminster, Pennsylvania 18974	1
Chief of Naval Operations OP-596 Washington, D.C. 20350	1	Naval Research Laboratory Attn: Library Washington, D.C. 20375	1
Commander Naval Air Test Center CT 176 Patuxent River, Maryland 20670	1	Chief of Naval Education and Training Liaison Office AFHRL/OTLN Williams AFB, Arizona 85224	6

NAVTRAEQUIPCEN IH-328

DISTRIBUTION LIST (cont'd)

Office of Deputy Chief of Naval Operations Manpower, Personnel and Training (OP-01) Washington, D.C. 20350	1	Dr. Donald W. Connolly Research Psychologist Federal Aviation Administration FAA NAFEC ANA-230 Bldg. 3 Atlantic City, New Jersey 08405	1
Assistant Secretary of the Navy Research, Engineering & Systems Washington, D.C. 20350	1	Chief of Naval Material MAT 08D2 CP5, Room 678 Attn: Arnold I. Rubinstein Washington, D.C. 20360	1
HQ Marine Corps Code APC Attn: LTC J. W. Biermas Washington, D.C. 20380	1	Commanding Officer Naval Education Training Program and Development Center Attn: Technical Library Pensacola, Florida 32509	1
Chief of Naval Operations OP-593B Washington, D.C. 20350	1	Commander Naval Air Systems Command Technical Library AIR-950D Washington, D.C. 20361	1
Scientific Advisor Headquarters U.S. Marine Corps Washington, D.C. 20380	1	Chief of Naval Education and Training Code 01A Pensacola, Florida 32509	1
Commander Pacific Missile Test Center Point Mugu, California 93042	1	Dr. David C. Nagel LM-239-3 NASA Ames Research Center Moffett Field, California 94035	1
Commander Naval Air Systems Command AIR 413 Washington, D.C. 20361	1	Federal Aviation Administration Technical Library Bureau Research & Development Washington, D.C. 20590	1
Commanding Officer Naval Aerospace Medical Research Laboratory Code L5 Department of Psychology Pensacola, Florida 32512	1	Commander Naval Weapons Center Human Factors Branch (Code 3194) Attn: Mr. Ronald A. Erickson China Lake, California 93555	1

NAVTRAEQUIPCEN IH-328

DISTRIBUTION LIST (cont'd)

Dr. Thomas Longridge AFHRL/OTR Williams AFB, Arizona 85224	1	Mr. Robert Wright Aeromechanics Lab (USAAVRADCOM) Ames Research Ctr, MS 239-2 Moffett Field, California 94035	1
Dr. Kenneth Boff ARAMRL/HEA Wright Patterson AFB, Ohio 45433	1	Lt Col Jefferson Koonce USAF/DFBL USAF Academy, Colorado 80840	1
CAPT James Goodson Code L-32 Naval Aerospace Medical Research Laboratory Pensacola, Florida 32512	1	CDR Joseph Funaro Code 602 Human Factors Engineering Division Naval Air Development Center Warminster, Pennsylvania 18974	1
Dr. Genevieve Haddad AFOSR/NL Bolling AFB, D.C. 20332	1	Dr. Will Bickley USARI Field Unit P.O. Box 476 Fort Rucker, Alabama 36362	1
Mr. Don Gum AFWAL/FIGD Wright Patterson AFB, Ohio 45433	1	Mr. Brian Goldiez PM TRADE DRCPM-PND-RE Naval Training Center Orlando, Florida 32813	1
Mr. James Basinger ASD/YWE Wright Patterson, AFB, Ohio 45433	2	Mr. David L. Key U.S. Army AVRADCOM, M.S. 215-1 Ames Research Center Moffett Field, CA 94035	1
Mr. Rowland Bowles NASA Langley Research Center MS 125-B Hampton, Virginia 23365	1		

END

DATE
FILMED

04-82

DTIC