

DTIC FILE COPY

AD A116494

(4)

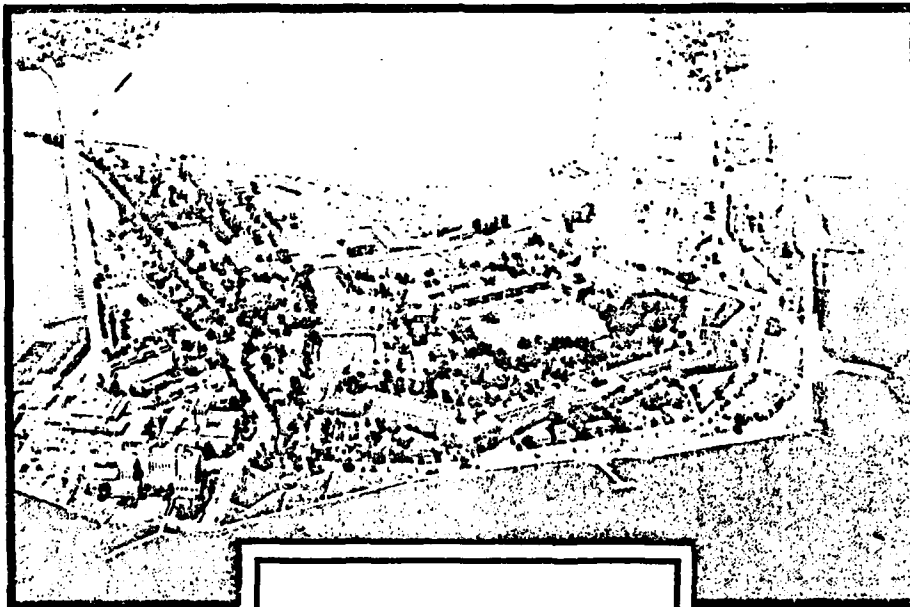
HEADQUARTERS

DATA CONTROL NUMBER

100 NO / PROJECT NO

UNITED STATES ARMY TRAINING AND DOCTRINE COMMAND

FORT MONROE, VIRGINIA 23651



DTIC
ELECTE
JUL 6 1982
H D

Copy available to DTIC does not permit fully legible reproduction

Word Criticality Analysis
MOS: 36K
Skill Levels 1 & 2

COPY ____ OF ____ COPIES

PREPARED BY: OPERATIONS DIV, DPFO

ATDP FORM 109-1 Oct 80
Feb 80 edition may be used until exhausted.

82 07 06 103

DISTRIBUTION STATEMENT A
Approved for public release;
Distribution Unlimited

DISCLAIMER NOTICE

**THIS DOCUMENT IS BEST QUALITY
PRACTICABLE. THE COPY FURNISHED
TO DTIC CONTAINED A SIGNIFICANT
NUMBER OF PAGES WHICH DO NOT
REPRODUCE LEGIBLY.**

UNCLASSIFIED

SECURITY CLASSIFICATION OF THIS PAGE (When Data Entered)

REPORT DOCUMENTATION PAGE		READ INSTRUCTIONS BEFORE COMPLETING FORM
1. REPORT NUMBER 36K	2. GOVT ACCESSION NO. ADA116 499	3. RECIPIENT'S CATALOG NUMBER
4. TITLE (and Subtitle) Word Criticality Analysis MOS: 36K Skill Level: 1/2	5. TYPE OF REPORT & PERIOD COVERED Final	
	6. PERFORMING ORG. REPORT NUMBER	
7. AUTHOR(s) Dr. Alexander A. Longo	8. CONTRACT OR GRANT NUMBER(s)	
9. PERFORMING ORGANIZATION NAME AND ADDRESS Training Developments Institute ATTN: ATTC-DOR Fort Monroe, VA 23651	10. PROGRAM ELEMENT, PROJECT, TASK AREA & WORK UNIT NUMBERS	
11. CONTROLLING OFFICE NAME AND ADDRESS Training Developments Institute ATTN: ATTC-DOR Fort Monroe, VA 23651	12. REPORT DATE Sep 1981	
	13. NUMBER OF PAGES 28	
14. MONITORING AGENCY NAME & ADDRESS (if different from Controlling Office)	15. SECURITY CLASS. (of this report) Unclassified	
	15a. DECLASSIFICATION/DOWNGRADING SCHEDULE	
16. DISTRIBUTION STATEMENT (of this Report) Approved for Public Release; Distribution is unlimited.		
17. DISTRIBUTION STATEMENT (of the abstract entered in Block 20, if different from Report)		
18. SUPPLEMENTARY NOTES		
19. KEY WORDS (Continue on reverse side if necessary and identify by block number) MOS Vocabulary Readability Comprehension of text Curriculum Development		
20. ABSTRACT (Continue on reverse side if necessary and identify by block number) This report contains terms selected as having some degree of criticality in the training/performance of tasks contained in the respective MOS Soldier's Manual (SM). These critical words were selected by subject matter/job experts knowledgeable in their MOS. The vocabulary set used as the basis for critical word analysis was the Word Frequency Report based on the SM for the same MOS.		

Contents and General Information

1. The Word Criticality Analysis (WCA) reports were reproduced exactly as generated via computer printout. The prime users of this document were fully cognizant of its contents and required no special instructions for interpretation. However, for the sake of other readers, the following brief description of contents is provided.

2. The WCA reports for most MOS are divided as follows:

- o Skill Level I
- o Skill Level II

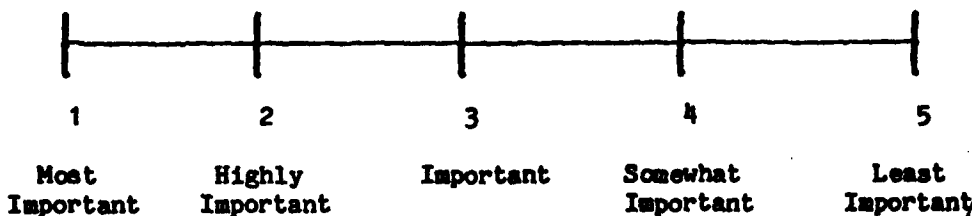
However, due to the way some Soldier Manuals are constructed; the WCA for some MOS have both Skill Levels merged into one report. Each Skill Level is subdivided into two sections.

a. Introductory - these MOS critical words, identified by the code "TRN", represent terms unmatched on the master tape for that MOS. (Reasons for this include: words volunteered as critical; keypunching errors; updating master tapes per changes in SM, etc). NOTE: The number to the left of each critical word is its criticality index defined below.

b. Main - these MOS critical words are ranked alphabetically within a criticality index (defined below) that also is ranked from 1-5. The numbers to the right of the critical words represent the SM page on which that term appeared and its frequency of appearance. Example "222,4" is interpreted as: "4 times on page 222". NOTE: Due to computer programming/sort difficulties, the accuracy of correct page referencing is only approximately 80% for most reports. Improvements in programming and coding increased this accuracy to 95% in those reports completed last (i.e., dated Jan-Mar 82).

3. Word Criticality Index:

The following 5 point rating scale was used by a team of up to 3 subject matter experts from Army MOS proponent schools to rate each word selected as having some importance for training/performing a critical task:



Accession For	<input checked="" type="checkbox"/>
NTIS GRA&I	<input checked="" type="checkbox"/>
DTIC TAB	<input checked="" type="checkbox"/>
Unannounced	<input type="checkbox"/>
Justification	<input type="checkbox"/>
By	
Distribution	
Availability Codes	
Dist. Avail. and/or	
Special	
A23 CA	

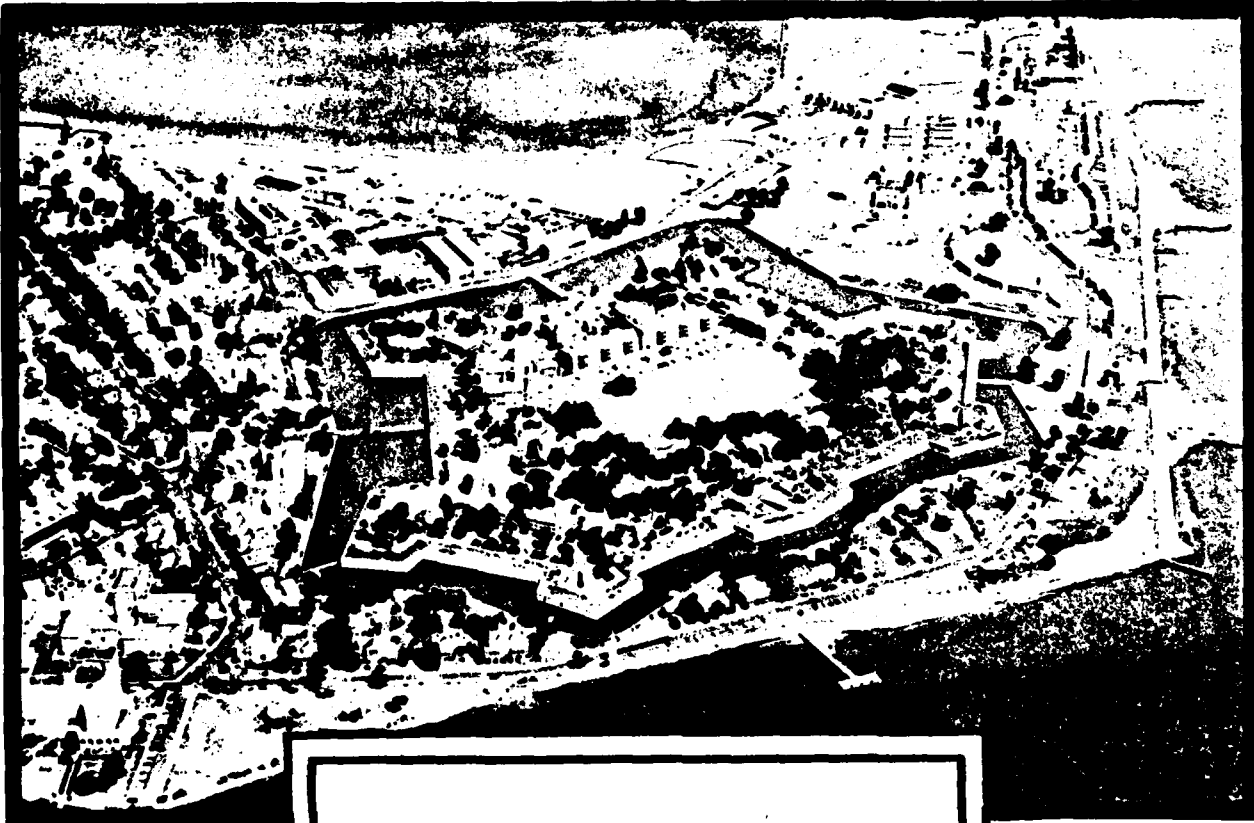
HEADQUARTERS
UNITED STATES ARMY TRAINING AND DOCTRINE COMMAND
FORT MONROE, VIRGINIA 23651

DATA CONTROL NUMBER

Job No/ Proj No

SEP 4 1980

WCA
ORAD



36K - 10/1/80

KP = (2)
P = (2)

ATDP FORM 109-1 Replaces ATDS 118-1, Feb 75,
Feb 80 which is obsolete

PREPARED BY: OPERATIONS DIV, DPFO

COPY _____ of _____ COPIES

3	ROUTE	253.2	180.2	155.1	10.1	8.1	3.2	1.3						
3	ROUTED	197.1	180.1											
3	ROUTES	10.1												
3	RUSHING	4.1												
3	RUSH	131.1	115.1											
3	SECTION	129.1	29.2	27.2	131.5	181.3	191.2	182.6	26.4	18.2	9.1	8.1	7.1	5.13
		3.1	2.2	1.1										
3	SECTIONS	3.1	2.1	1.1	182.1	5.2								
3	SEIZING	223.1												
3	SEIZURE	163.1												
3	SELECT	143.1	141.1	5.1	4.1									
3	SELECTOR	157.1	155.1	103.1	91.1	65.1								
3	SEMP	211.1	8.1	4.2	1.2	13.1								
3	SEMP	3.1												
3	SEMP	163.1												
3	SEMP	2.1												
3	SERVICE	255.1	63.1	24.1	9.1	3.1								
3	SERVICEABILITY	2.1	119.1	25.1	4.1	193.1	189.1							
3	SERVICES	1.1	2.1	9.1	7.4	5.1	4.1	245.1	233.1	185.1	177.1	21.3		
3	SIDPHONE	211.1	3.6	1.1										
3	SIG	129.3	127.2											
3	SIGNAL	163.1	125.1	127.1	109.13	103.6	101.2	24.1	3.1	2.4	1.1			
3	SIGNALLED	127.1												
3	SIGNALING	127.1												
3	SIGNALS	111.1												
3	SILENT	103.1												
3	SITE	103.1	91.1	65.1	1.1	157.1	155.1							
3	SITTO	8.1												
3	SOCKETS	1.1												
3	SOUND	101.2	3.5											
3	SQUARE	1.1	159.1	23.1										
3	SQUELCH	193.1												
3	SUBSCRIBERS	6.3	3.1											
3	SUBSCRIBERS	127.1												
3	SUPERVISE	127.1												
3	SUPERVISION	2.2	213.1	221.1	217.1	215.1	227.1	223.1	205.1	193.1	189.1	201.1	195.1	131.1
		179.1	153.1	151.1	145.1	147.1	165.1	183.1	179.1	177.1	173.1	171.1	159.2	157.1
		155.1	119.1	115.1	103.2	93.1	51.1	83.1	71.1	55	63.1	26.1	24.1	23.1
		12.1	4.2	3.1	10.3	9.2	8.1	7.1	6.1	5.2	234.1	247.1	245.1	243.1
		235.1	233.1	231.1	229.1									
3	SUPERVISOR	3.1	1.1	8.1	63.1	26.1	24.1	23.1	21.3	12.1	5.1	6.3	7.2	
		6.1	5.2	4.5	157.1	171.1	159.2	207.1	177.1	173.1	271.1	195.1	193.1	185.1
		183.1	179.1	153.1	153.1	151.1	149.1	147.1	125.1	119.1	115.1	103.2	93.1	254.1
		247.1	225.1	245.1	243.1	235.1	233.1	231.1	227.1	215.1	223.1	221.1	217.1	213.1
		209.1												
3	SURFACE	153.2	103.1	4.1	3.1	155.3								
3	SYMBOL	21.1												
3	SYMBOLS	253.1												
3	SYMPTOMS	21.2												
3	SYSTEM	1.1	2.1	201.2	195.1	18.1	247.1	3.1	7.1	6.2	5.1	12.1		

MOS WORD LIST BY PAGE

DATE 80247 1235 PAGE 15

4	RESPONSE	26.1																	
4	ROAD	155.1	153.1	151.5	149.2														
4	ROUN	5.1																	
4	RUNNING	24.2																	
4	RESCUED	157.1																	
4	SEATED	65.1	2.1	1.1															
4	SPATING	115.1																	
4	SPICE	129.2																	
4	SECURELY	137.1																	
4	SELECTED	1.3.1	26.1																
4	SELECTION	211.1																	
4	SET	131.1	93.3	91.3	89.1	29.1	26.1	23.5	13.1	9.1	8.6	6.2	5.9	4.9					
		3.1	2.5	1.5	163.1	171.2	131.1	129.1	127.2	115.1	109.1	103.2	173.4	229.1					
		223.2	215.2	213.2	209.2	195.1	163.1	185.2	163.2	181.1	179.4	177.3	254.1	245.2					
		243.2																	
4	SETS	5.3	193.1	13.1	8.2	6.1													
4	SETTING	241.1	221.1	89.1	23.1	12.1	4.1	1.1											
4	SETTINGS	89.1																	
4	SIGN	169.2	21.1	6.1															
4	SITUATED	187.1																	
4	SITUATION	24.1	23.1	18.1	12.1	9.2	6.3	7.1	6.1	5.2	4.2	3.1	2.2	254.1					
		247.1	245.1	24.1	235.1	233.1	231.1	225.1	227.1	223.1	221.1	217.1	185.1	183.1					
		193.1	179.1	17.1	173.1	159.2	157.1	171.1	215.1	213.1	209.1	207.1	201.1	195.1					
		155.1	83.1	65.2	63.1	26.1	153.1	151.1	149.1	147.1	131.1	129.1	119.1	115.1					
		103.2	93.1	91.1															
4	SITUATIONS	1.1																	
4	SOLIDIFIED	26.1																	
4	SOLID	65.1																	
4	SOURCE	187.1																	
4	SURFACES	89.1	115.1	5.2	1.4														
4	TEC	231.2	229.3	8.1	6.1	5.2	173.1	170.4	129.3	103.2	101.2	26.2							
4	TECHNIQUES	13.1	93.1	159.2	155.1	153.1	151.1	175.1	163.1	243.1									
4	TOP	1.3	103.3	181.1	187.1	182.4	153.2	83.1	65.1	5.9	3.2								
4	TOUCHING	1.1																	
4	TURN	4.3	2.3	1.2	26.2	24.1	65.2	29.1	183.1	143.1	131.1	109.4	103.4	101.2					
		89.1																	
4	TYPE	21.1	8.1																
4	WAC	5.6	4.16	3.3	2.6	1.3	131.1	129.2	115.1	103.1	101.1	65.2	191.1	173.1					
		145.1	231.1	229.2	223.1	221.1	26.1	24.1	23.2	18.2	13.2	12.1	9.4	8.7					
		7.1	6.4																
4	WALK	65.1																	
4	WATERPROOF	4.1																	
4	WEAR	115.1																	
4	WEATHER	71.1	65.2	63.1	24.1	8.1	7.1	5.1	4.2	2.2	93.1	91.1	83.1	185.1					
		193.1	179.1	177.1	173.1	171.1	159.2	157.2	153.1	151.1	145.1	131.1	254.1	245.1					
		243.1	227.1	223.1	221.1	217.1	215.1	213.1	209.1	195.1	193.1	189.1							
4	WEEKLY	4.1	2.1	1.2	24.1	131.1	71.2	21.1	7.4										
4	WET	8.1																	
4	WIPING	147.1	131.1	129.1	5.2														
4	WITHIN	3.1	2.2	5.1	4.2	7.1	8.1	18.1	12.1	10.3	5.2	24.1	23.1	63.1					

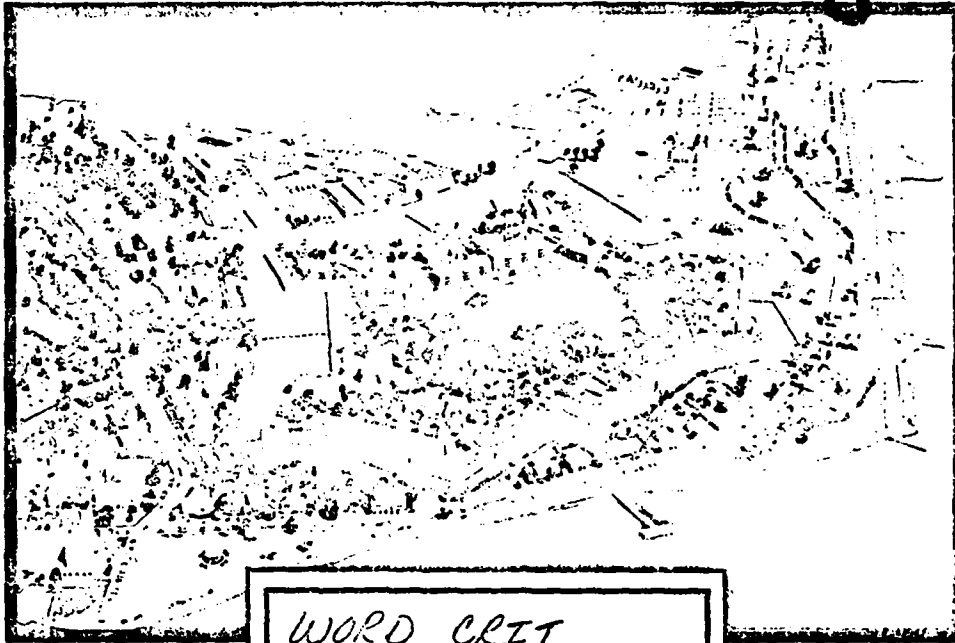
HEADQUARTERS

Audit Report
DATA CONTROL NUMBER **CRS**
JOB NO / PROJECT

UNITED STATES ARMY TRAINING AND DOCTRINE COMMAND

FORT MONROE, VIRGINIA 23651

Sig WCA
NOV 20 1980



ORAD

WORD CRIT
MOS-36K
SKILL LEVEL 1E2

KP = (A) (B)
P = (A)

COPY _____ OF _____ COPIES

PREPARED BY: OPERATIONS DIV, DPFO

ATDP FORM 109 Replaces ATDS 118, Jul 73, which is obsolete

MOS WORD LIST BY PAGE

DATE 00322 2119 PAGE 3

3	FRUN	3,10 2,2	1,5	153,1	131,2	129,3	1,7,1	115,1	109,7	103,8	101,3	89,1	69,7
		26,3 74,4	23,3	8,3	5,8	4,3	197,1	193,2	187,1	140,1	163,4	157,1	
3	IMMEDIATE	21,1 7,1											
3	INDIA	170,2 167,1											
3	INDICATOR	1,1											
3	INDICATORS	93,1 173,1											
3	INSTALL	127,1 10,5											
		211,1 20,3	195,5	181,1	179,3	173,1	171,3	157,2	155,2	153,3	151,2	149,2	103,2
		101,1 91,1	89,1	65,2	63,3	26,2	24,1	18,2	8,3	6,1	5,3	4,6	3,1
		2,4 1,2											
3	INSTALLED	254,1 247,1	235,1	231,1	225,1	221,1	201,1	193,1	173,2	147,1	129,1	103,2	89,1
		65,1 24,1	23,1	9,1	8,1	6,1	5,2	3,2	1,1				
3	INSULATION	192,1 163,1	159,2	115,1	89,1	8,1	5,2	1,2					
3	INT	2,2 1,1											
3	INT-EXT	2,2											
3	INTEGRATION	247,1 201,1	195,1	6,1									
3	INTERCONNECTING	127,1 29,1	12,1	9,1	1,4								
3	IS	8,4 7,6	6,4	5,9	4,6	3,11	2,6	1,10	163,18	159,2	157,1	155,3	153,2
		151,1 149,1	147,1	143,1	131,5	129,1	127,2	119,1	115,2	109,3	103,7	93,1	91,1
		89,1 63,1	71,1	65,2	63,3	29,1	26,3	25,3	24,4	23,1	21,9	19,1	17,1
		9,4 25,2	247,1	245,1	243,2	235,1	233,1	231,3	229,3	227,1	223,5	221,3	217,3
		215,1 213,1	209,1	207,1	201,2	195,1	183,1	171,1	169,1	167,1	165,1	163,1	160,3
		179,1 177,2	173,3	171,1	170,4	169,1							
3	KNOWLEDGE	1,1											
3	MAINS	193,1											
3	NUMERICAL	167,1 163,1											
3	OPEN	169,1 177,1											
3	OPERATE	213,2 201,2	183,2	89,3	83,2	65,1	26,3	24,4	12,1	5,3	4,7	2,6	173,1
		143,2 127,3	109,6	103,5	101,8	93,2							
3	OPERATED	109,1 2,1											
3	OPERATIONS	65,1 63,2											
3	ORIGINATOR	127,1											
3	PHONETIC	167,1											
3	PHONETICALLY	163,1 167,1											
3	PLAN	170,1											
3	PLUG	10,1											
3	PLUGS	153,1 129,1	127,2	115,1	109,20	103,16	101,5	26,1					
3	PLUGS	1,1 109,1	103,1	131,1	129,1	115,2							
3	PRELIMINARY	227,1 103,1	26,1	23,1									
3	PREPARATION	213,1											
3	PREPARATIONAL	4,1 1,1	231,1	221,1	26,1	12,1	239,1	237,1					
3	PREPARATION	173,1 1,1	12,1	5,2									
3	RADIO	193,7 187,1	185,2	183,2	181,1	18,1	179,4	177,3	173,6	171,2	170,2	163,4	26,2
		22,1 13,3	8,4	6,8	5,4	4,5	3,4	1,4	201,2	195,1	243,2	243,2	203,1
3	REFERENCE	163,3											
3	SAY	163,1											
3	THIS	254,2 247,2	245,2	243,2	235,2	233,2	231,2	229,2	227,2	223,2	221,2	217,2	215,1
		213,1 209,1	207,1	201,1	195,1	193,1	189,1	183,1	179,1	177,1	173,1	171,1	171,1
		170,4 163,6	159,2	157,1	155,1	151,1	143,1	149,1	147,1	143,1	131,1	129,1	119,1
		115,1 103,2	93,1	91,1	83,1	71,1	65,2	63,1	26,1	24,1	23,1	21,2	18,1

MOS WORD LIST BY PAGE

DATE 08322 2115 PAGE

4	CRACKS	1,1	131,1																
4	CR-503/PAC-25	3,1																	
4	CC	3,1																	
4	DRIVEN	24,4	4,4	223,1	221,3	217,2	83,2												
4	DRIVER	24,1																	
4	DWG	8,2	1,1																
4	ELEMENT	1,1																	
4	EMPLOYED	163,1																	
4	ENDANGERED	197,1	180,1																
4	ENTER	3,7	191,4	7,3	4,1														
4	ENTERED	3,1																	
4	ENVIRONMENT	5,2	4,2	3,1	2,2	185,1	183,1	179,1	177,1	173,1	171,1	159,2	157,1	155,1					
		153,1	151,1	149,1	147,1	131,1	129,1	119,1	115,1	103,2	103,1	91,1	89,1	85,1	83,1				
		63,1	26,1	24,1	23,1	16,1	12,1	9,2	8,3	7,1	6,1	25,1	24,1	24,1	20,1	20,1	20,1	20,1	20,1
		235,1	233,1	231,1	229,1	227,1	223,1	221,1	217,1	215,1	213,1	209,1	207,1	205,1	201,1				
		193,1	193,1																
4	ERROR	163,1																	
4	ERRORS	2,1	115,1	24,1	9,1	7,1	245,1	215,1	185,1	177,1	131,1	119,1							
4	FLATBED	65,4	24,1	4,1															
4	FLAYS	131,1																	
4	FREELY	8,1	4,1																
4	FRICTION	143,1	65,1																
4	FRONT	2,1	1,7	187,2	149,2	115,1	103,4	99,2	7,2	3,1									
4	FWD	2,2	127,3	109,5	101,1														
4	GRASP	65,1	103,1																
4	HAS	149,1																	
4	IMMEDIATELY	1,1	162,3																
4	INCIDENT	3,1																	
4	INDICATE	1,3,1	21,1	253,1	163,1														
4	INITIATE	170,1	95,1	25,1															
4	INITIATING	170,1																	
4	INSTALL	255,1	243,1	221,1															
4	INSTALLATION	1,1	229,2	223,1	217,1	131,1	129,1	1,3,2	1,1,2	91,1	89,1	65,1	26,1	18,1					
		6,1	5,2	4,3	3,2	254,2	242,1	247,2	243,3	235,2	231,2	221,1	131,4	129,1					
4	INSURE	1,2	3,4	2,1	21,1	9,1	5,3	4,3	231,1	229,1	223,3	221,1	131,4	129,1					
		115,1	65,1	23,2															
4	INTENDED	163,1																	
4	ISOLATED	167,1																	
4	KIDN	101,1	23,1																
4	MT-1029/ARC	1,1	4,1	3,9	197,1	180,2	13,1												
4	MT-1998/ARC	1,1	13,1	4,1															
4	MSC	2,2	12,1	9,2	8,3	7,1	6,1	5,2	4,2	3,1	215,1	213,1	209,1	207,1					
		201,1	195,1	193,1	185,1	183,1	179,1	177,1	173,1	171,1	159,2	157,1	155,1	153,1					
		151,1	149,1	147,1	131,1	129,1	119,1	115,1	103,2	93,1	91,1	83,1	65,2	63,1					
		26,1	24,1	23,1	18,1	217,1	229,1	227,1	223,1	221,1	214,1	247,1	245,1	243,1					
		235,1	233,1																
4	NSN	26,1																	
4	OBTAIN	139,1																	
4	OPERATING	231,1	227,2	163,1	169,1	3,2	1,1	1,3,2	26,1	6,1	4,1	201,1	173,1						
4	OPERATIONAL	103,1	89,1	8,1	6,1	4,2	1,1	155,1	131,1	234,1	247,2	201,1	173,1						

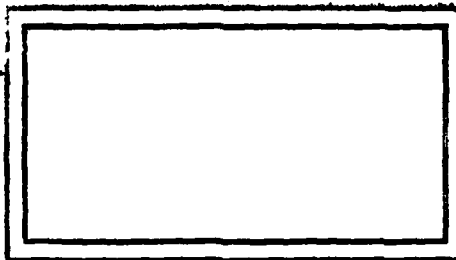
HEADQUARTERS

DATA CONTROL NUMBER

JOB NO / PROJECT NO

UNITED STATES ARMY TRAINING AND DOCTRINE COMMAND

FORT MONROE, VIRGINIA 23651



PREPARED BY: OPERATIONS DIV, DPFO

FORM
ATDP Oct 60 109-1 Feb 60 edition may be used
until exhausted.

COPY _____ OF _____ COPIES

END

DATE
FILMED

8 8 2

DTIC