

AD-A116 600

ARMY TRAINING DEVELOPMENTS INST FORT MONROE VA  
WORD CRITICALITY ANALYSIS. MOS: 32D. SKILL LEVELS 1 & 2.(U)  
SEP 81 A A LONGO  
MOS-32D

F/G 5/9

UNCLASSIFIED

NL

FILE

11/11/81



FILE  
11/11/81

DTIC FILE COPY

HEADQUARTERS

DATA CONTROL NUMBER

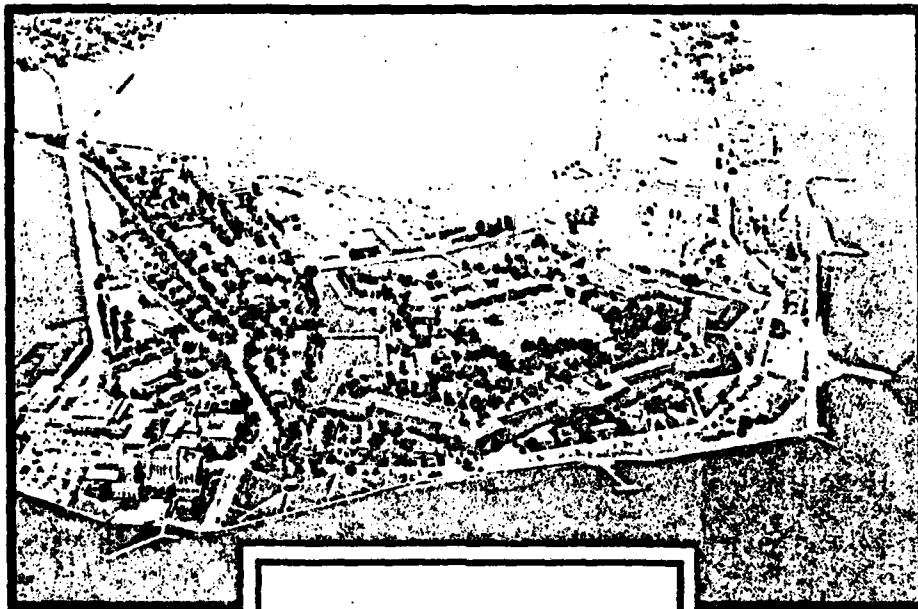
JOB NO / PROJECT NO

(4)

UNITED STATES ARMY TRAINING AND DOCTRINE COMMAND

FORT MONROE, VIRGINIA 23651

AD A116600



Copy available to DTIC does not  
permit fully legible reproduction

DTIC  
ELECTE  
JUL 7 1982

82 07 06 186

DISTRIBUTION STATEMENT  
Approved for public release  
Distribution: unlimited

Word Criticality Analysis  
MOS: 32D  
Skill Level 1 *12*

PREPARED BY: OPERATIONS DIV, DPFO

COPY \_\_\_\_\_ OF \_\_\_\_\_ COPIES

FORM  
ATOP Oct 80 109-1 Feb 80 edition may be used  
until exhausted.

## **DISCLAIMER NOTICE**

**THIS DOCUMENT IS BEST QUALITY  
PRACTICABLE. THE COPY FURNISHED  
TO DTIC CONTAINED A SIGNIFICANT  
NUMBER OF PAGES WHICH DO NOT  
REPRODUCE LEGIBLY.**

UNCLASSIFIED

SECURITY CLASSIFICATION OF THIS PAGE (When Data Entered)

REPORT DOCUMENTATION PAGE		READ INSTRUCTIONS BEFORE COMPLETING FORM
1. REPORT NUMBER <b>32D</b>	2. GOVT ACCESSION NO. <b>AD-A116600</b>	3. RECIPIENT'S CATALOG NUMBER
4. TITLE (and Subtitle) <b>Word Criticality Analysis MOS: 32D Skill Level: 192</b>		5. TYPE OF REPORT & PERIOD COVERED <b>Final</b>
		6. PERFORMING ORG. REPORT NUMBER
7. AUTHOR(s) <b>Dr. Alexander A. Longo</b>		8. CONTRACT OR GRANT NUMBER(s)
9. PERFORMING ORGANIZATION NAME AND ADDRESS <b>Training Developments Institute ATTN: ATTC-DOR Fort Monroe, VA 23651</b>		10. PROGRAM ELEMENT, PROJECT, TASK AREA & WORK UNIT NUMBERS
11. CONTROLLING OFFICE NAME AND ADDRESS <b>Training Developments Institute ATTN: ATTC-DOR Fort Monroe, VA 23651</b>		12. REPORT DATE <b>Sep 1981</b>
		13. NUMBER OF PAGES <b>13</b>
14. MONITORING AGENCY NAME & ADDRESS (if different from Controlling Office)		15. SECURITY CLASS. (of this report) <b>Unclassified</b>
		15a. DECLASSIFICATION/DOWNGRADING SCHEDULE
16. DISTRIBUTION STATEMENT (of this Report)  <b>Approved for Public Release; Distribution is unlimited.</b>		
17. DISTRIBUTION STATEMENT (of the abstract entered in Block 20, if different from Report)		
18. SUPPLEMENTARY NOTES		
19. KEY WORDS (Continue on reverse side if necessary and identify by block number) <b>MOS Vocabulary Readability Comprehension of text Curriculum Development</b>		
20. ABSTRACT (Continue on reverse side if necessary and identify by block number) <b>This report contains terms selected as having some degree of criticality in the training/performance of tasks contained in the respective MOS Soldier's Manual (SM). These critical words were selected by subject matter/job experts knowledgeable in their MOS. The vocabulary set used as the basis for critical word analysis was the Word Frequency Report based on the SM for the same MOS.</b>		

## Contents and General Information

1. The Word Criticality Analysis (WCA) reports were reproduced exactly as generated via computer printout. The prime users of this document were fully cognizant of its contents and required no special instructions for interpretation. However, for the sake of other readers, the following brief description of contents is provided.

2. The WCA reports for most MOS are divided as follows:

- o Skill Level I
- o Skill Level II

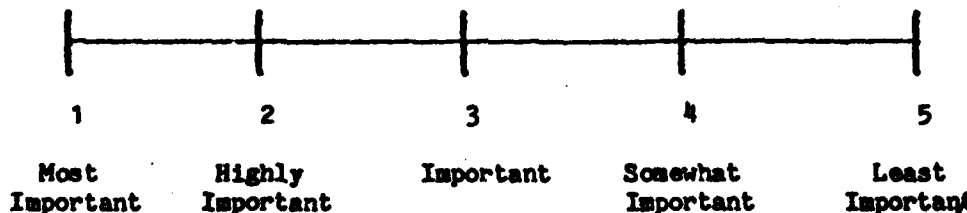
However, due to the way some Soldier Manuals are constructed, the WCA for some MOS have both Skill Levels merged into one report. Each Skill Level is subdivided into two sections.

a. Introductory - these MOS critical words, identified by the code "TRN", represent terms unmatched on the master tape for that MOS. (Reasons for this include: words volunteered as critical; keypunching errors; updating master tapes per changes in SM, etc). NOTE: The number to the left of each critical word is its criticality index defined below.

b. Main - these MOS critical words are ranked alphabetically within a criticality index (defined below) that also is ranked from 1-5. The numbers to the right of the critical words represent the SM page on which that term appeared and its frequency of appearance. Example "222,4" is interpreted as: "4 times on page 222". NOTE: Due to computer programming/sort difficulties, the accuracy of correct page referencing is only approximately 80% for most reports. Improvements in programming and coding increased this accuracy to 95% in those reports completed last (i.e., dated Jan-Mar 82).

### 3. Word Criticality Index:

The following 5 point rating scale was used by a team of up to 3 subject matter experts from Army MOS proponent schools to rate each word selected as having some importance for training/performing a critical task:



Accession For	
NTIS GRA&I	<input checked="" type="checkbox"/>
DTIC TAB	<input type="checkbox"/>
Unannounced	<input type="checkbox"/>
Justification	<input type="checkbox"/>
By _____	
Distribution/Availability Codes	
Dist	Avail and/or
A	Special
23	

HEADQUARTERS

DATA CONTROL NUMBER \_\_\_\_\_  
JOB NO / PROJECT NO

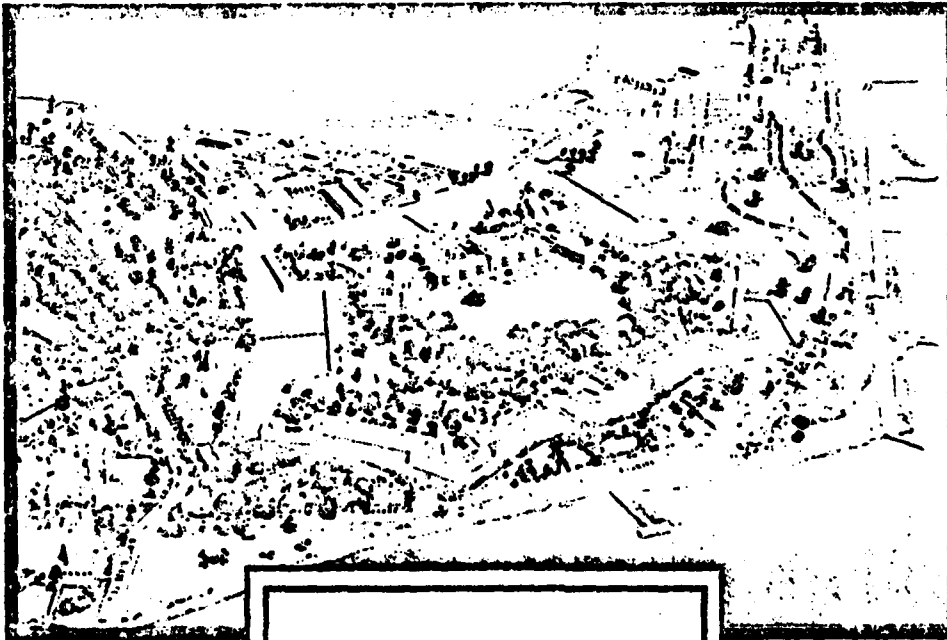
UNITED STATES ARMY TRAINING AND DOCTRINE COMMAND

FORT MONROE, VIRGINIA 23651

WCA

JAN 9 1981

ORAD



"WORD CRIT MOS-32D SKILL LEVEL 1"

KR = (A)  
P = (C)

COPY \_\_\_\_\_ OF \_\_\_\_\_ COPIES

PREPARED BY: OPERATIONS DIV, DPFO

ATDP FORM 109 Replaces ATDM 110, Jul 75, which is obsolete

MOS WORD LIST BY PAGE

DATE 81007 1739 PAGE 1

ANS. 370  
 BILL COUL  
 1

1	ACCESS	1:1	9:2	0:1						
1	ADAPTOR	9:2								
1	ADJUST	2:1	99:3	9:1						
1	AGC	22:3	0:2							
1	ALARM	99:13	2:2							
1	ALIGNMENT	99:1	0:3							
1	ALTERNATE	2:1	99:3	0:3						
1	AMBER	08:1								
1	AMPLIFIER	9:1								
1	AMPLIFYING	0:1								
1	AMPLITUDE	99:2								
1	AN/FCC-19	2:1								
1	AN/FCC-25	4:1								
1	AN/FCC-39	0:1								
1	AN/HSQ-73	2:0								
1	ANALYSIS	1:1	99:0	08:1	22:2	9:1	0:2	2:3		
1	ANALYZE	0:4	2:1	99:3						
1	ANALYZER	2:3	22:1	0:3	99:1					
1	APCILLARY	0:1								
1	ANNUAL	4:1								
1	ANTENNA	0:2								
1	APD	0:1								
1	AUDIO	99:1	22:1	2:3	1:1					
1	AUTODIN	0:1								
1	AUTOMATIC	0:2								
1	AUTOVON	3:1	9:1	0:1						
1	AUXILIARY	2:1								
1	BANDWIDTH	99:1	2:1							
1	BASE	2:3	22:1	3:1						
1	BASEBAND	22:7	9:2	0:14	1:0					
1	BFL	22:2	9:3							
1	BIAS	2:4								
1	BINARY	22:3								
1	CABLE	0:3	2:9							
1	CCU	0:1	3:1							
1	CCSD	0:7	3:3	1:1						
1	CHANNEL	99:74	08:19	0:25	3:2	2:20	1:4			
1	CHANNELIZATION	2:1								
1	CIRCUIT	153:2	99:79	08:10	22:5	9:0	0:40	3:19	2:37	1:13
1	CIRCUITRY	99:1	0:4							
1	COMMERCIAL	0:3	3:1							
1	COMPONENT	99:3								
1	COMPOSITE	99:4	2:2							
1	CURRENT	99:1	31:2	0:1	4:2	3:1	1:2			
1	DB	99:12	22:2	1:2						
1	DBM	2:1	99:7	08:2	3:1					
1	DBM0	1:3	99:23	08:3	2:4					
1	DBRN	08:5								
1	DBRNC	08:6								
1	DBRNCO	2:1	08:4							



WDS WORD LIST BY PAGE

DATE 010C7 1759 PAGE 3

1	TELEPHONE	3,1	9,3	6,1				
1	TELETYPE	6,2						
1	TERMINAL	3,1	2,11	68,1	9,1	6,13	4,1	99,3
1	THRESHOLD	22,1	1,1					
1	TLP	99,2	2,2	1,1				
1	TOLERANCE	99,3	9,1	1,1				
1	TRANSFORMER	99,3						
1	TRANSMISSION	99,14	68,3	6,2	2,6	1,3		
1	TRANSMIT	1,3	22,1	2,3	99,1			
1	TRANSMITTER	1,1	6,3					
1	TROOP	22,1						
1	TRUNK	3,7	2,1	99,7	6,12			
1	TSU	3,15	2,1	6,19				
1	VOLT	1,1						
1	VOLTMETER	99,4	22,2	9,1	6,5	2,8	1,3	
2	AC	2,3						
2	APPLICATION	6,1						
2	AR	6,2						
2	AUTHORITY	6,2						
2	AXIS	99,2						
2	BALANCE	99,7						
2	BAND	6,1	99,3					
2	BINDING	2,1						
2	BIT	22,3	1,5					
2	BRIDGE	99,2	2,2					
2	BRIDGED	99,3	2,1					
2	BRIDGING	99,3	1,1					
2	BYPASS	99,1						
2	CHARGE	2,1						
2	CHART	1,1	98,1	2,1	99,5			
2	CODE	6,10	3,8	22,1				
2	COMMON	1,1	6,9					
2	COMMUNICATION	2,1						
2	COMPENSATED	99,2						
2	COMPUTER	6,1						
2	CONFIGURATION	99,7	68,2	9,2	6,2	2,4		
2	CONNECT	2,3	99,4	22,2	6,1			
2	CONTROLLER	99,2	6,23	2,3				
2	CONVERTER	6,1						
2	COUNTER	99,10	6,1					
2	CURVE	22,3	6,2					
2	CUTOFF	2,1						
2	DIAGRAM	6,2						
2	DISTORTION	99,8	6,1	2,14	1,1			
2	DIVERSITY	6,2						
2	DWNTIME	4,1						
2	DUAL	2,2						
2	ELECTRICAL	68,1	2,1	1,1				
2	ELEMENT	6,4						
2	FAULT	2,19	1,9	98,1	68,4	9,2	6,21	99,20

MDS WORD LIST BY PAGE

DATE 810C7 1729 PAGE 4

2	FILTER	68,1							
2	FLUXUATION	68,3							
2	FM	2,1	22,3						
2	FORMULA	1,2	99,1						
2	FURNACE	6,1							
2	FOUR-WIRE	9,2							
2	FRAME	2,1	6,5						
2	FUNCTION	1,1							
2	GAIN	6,2	99,2						
2	GENERATOR	1,11	99,79	68,2	22,3	6,2	2,22		
2	GRID	99,2							
2	GROUND	99,1	9,1	2,10					
2	GROUP	99,1	6,12	3,1					
2	HARMONIC	99,5							
2	HAZARDOUS	99,2							
2	HORIZONTAL	99,3	6,1	3,6					
2	HZ	2,3	99,33	68,1					
2	IDENTIFY	99,2	9,1	6,1	3,3				
2	IMPULSE	2,11							
2	INSTRUMENT	99,1							
2	INSULATION	3,1							
2	INTERMODULATION	99,3							
2	INTERNAL	1,2	99,2	22,1					
2	INTERSWITCH	6,1							
2	ISULATE	1,1	6,3	2,2					
2	JACKFIELDS	6,2							
2	JITTER	99,16							
2	JULIAN	2,1							
2	JUMPER	3,3							
2	KARDX	6,1							
2	KEYER	6,1							
2	LEVEL	2,20	1,6	68,11	22,8	6,3	3,1	99,126	
2	LINK	6,1	3,2	1,3					
2	LOADING	22,3	9,2						
2	LONGITUDINAL	99,5							
2	LOOP	2,1							
2	LOSS	2,1	99,14						
2	MAFUNCTION	6,9	2,1						
2	MARGIN	4,1	2,1						
2	MASTER	1,5	99,10	6,7	2,3				
2	MAXIMUM	2,2	99,6	68,3					
2	MEASURE	2,5	1,1	99,8	68,1	9,1			
2	MESSAGE	6,2	1,1						
2	METER	2,2	1,6	99,5	68,6	22,3	6,4		
2	MISMATCH	99,1							
2	MODULAR	3,1							
2	MODULATION	6,1							
2	MODULES	6,1							
2	MONITOR	6,8							
2	MULTICHANNEL	2,2	1,1	99,1	68,1				

MJS WORD LIST BY PAGE

DATE 810C7 1799 PAGE 5

2	NEGATIVE	6,1							
2	NET	99,7							
2	NETWORK	99,1							
2	NOISE	22,1	6,14	2,14	1,7	99,5	68,13		
2	NOMINCLATURE	3,1	2,2	98,1	31,1	6,3			
2	NOMINAL	2,2	99,4	6,2					
2	NONINMATTED	6,9	2,3	99,3					
2	NONINDUCTIVE	2,1							
2	NONREPUTABLE	6,2							
2	ON_CALL	2,1	6,3						
2	ON-MARK	9,4							
2	ON-LINE	99,1							
2	OFFERIRE	6,5	1,5						
2	OSCILLATOR	2,2	99,3						
2	OUT-OF-SERVICE	2,2	6,1						
2	OUT-OF-TOLERANCE	6,1							
2	PAD	2,2							
2	PANEL	99,1	6,1	2,2					
2	PATCH	9,1	6,4	3,1	1,1				
2	PATH	99,1	2,2						
2	PATTERN	6,1	2,4	22,2					
2	PEAK	1,1	2,6						
2	PHASE	99,13	2,1						
2	PICOWATT	68,2							
2	PILOT	3,1	99,1	6,2					
2	PLUG	2,1							
2	PORT	1,3							
2	PREEMPT	6,2							
2	PROCEDURE	6,5	2,2	99,4					
2	PULSE	9,3							
2	RANGE	99,2	68,3	2,2					
2	RECOIL	4,1							
2	REPERFORATOR	6,2							
2	REKUTE	6,4	2,9	99,16	68,2	22,2	9,2		
2	RESET	99,2							
2	RESTIRAL	99,5	2,1						
2	RFD	6,7							
2	ROD	2,3							
2	ROTATION	4,1							
2	ROUTINE	1,1	9,1						
2	RP	3,1	6,3						
2	RSL	22,5							
2	SF	99,10	68,3	9,4	6,2	2,2			
2	SIGNAL	1,2	3,2	2,19	31,7	22,3	6,13	4,3	99,98
2	SIGNALING	6,3	2,1	9,14					68,3
2	SIGNALS	1,3	9,5	6,8	99,2	31,1			
2	SPECTRUM	6,4	1,1						
2	SUBSYSTEM	6,2							
2	SWITCH	99,1	22,1	2,5					
2	SYMPTOMS	99,2							



MOS WORD LIST By PAGE

DATE 81007 1759 PAGE 7

3	FIXED	6,1	2,1	22,1						
3	GUIDE	6,4								
3	HANDSET	9,3	6,1							
3	HEAT	2,1								
3	INCIMING	3,4								
3	INDICATOR	6,2	2,1	22,1						
3	INPUT	2,2,4	68,8	22,1	99,60					
3	INTELLIGENCE	6,1								
3	JACK	6,3	2,6	1,1						
3	LAMP	9,4								
3	LIGHT	2,2								
3	LINE	2,2	98,1	22,1	9,2	6,10	99,7			
3	LOG	2,6	1,10	99,14	6,14					
3	LOGS	2,1								
3	MAP	6,1								
3	MARK	2,3								
3	MEDIA	6,1								
3	MINIMUM	1,1	99,1							
3	MINUTE	6,2	99,1							
3	OPEN	2,1								
3	OUTAGE	99,3	6,19	2,1	1,1					
3	OUTPUT	99,69	68,4	22,2	6,8	2,32	1,3			
3	PERCENT	9,7								
3	PIN	2,2								
3	PLOT	6,1								
3	PRIORITY	6,15	2,4							
3	RADIO	6,5	1,1							
3	RADIO-MULTIPLEX	6,5								
3	RATE	99,2	22,2	9,1	6,3	3,1	2,2	1,8		
3	RECEPTACLES	2,2								
3	RECORDER	99,5	1,1							
3	REFERENCE	1,4	31,1	6,6	3,2	2,7	99,9			
3	REJECTION	2,1								
3	RESOURCES	3,1								
3	RETEST	6,2								
3	RMS	22,2								
3	SATURATE	2,1								
3	SCA	1,1	2,1							
3	SEMIANNUAL	4,1								
3	SEMIFIXED	2,1								
3	SEND	99,1	22,1	6,13	3,1	2,2	1,3			
3	SENSITIVITY	6,2	2,1	99,3	68,3					
3	SITE	6,1	2,3							
3	SIX-CHARACTER	3,1								
3	SCOPE	2,13	99,7	68,1	6,1					
3	SWING	2,1								
3	SWITCHABLE	68,1								
3	SYNCHRONISM	22,1								
3	TACTICAL	3,1	2,1							
3	TAG	31,2	9,2							

MOS WORD LIST BY PAGE

DATE 810C7 1799 PAGE 8

3	THREE-DIGIT	6,1																		
3	THRU-STATION	6,1																		
3	TURN-IN	9,1																		
3	UP-TO-DATE	22,1																		
3	VARIATION	99,5																		
3	VISUAL	4,1																		
3	VOICE	2,5	1,1	99,1	6,1															
4	ACCOUNT	3,1																		
4	ACTIVE	2,1	22,1																	
4	ACTIVITY	2,1	6,6	4,1	9,1															
4	ADDRESS	2,1																		
4	ADMINISTRATION	31,1	6,9																	
4	ADMINISTRATIONS	3,1																		
4	BLOWN	2,1																		
4	BRACKET	2,1																		
4	CARD	31,1	6,4																	
4	CHARACTERISTIC	99,1																		
4	COLUMN	4,1	6,5																	
4	COMBINED	2,1	22,1																	
4	CONDITIONING	6,3	2,1																	
4	CUTTERS	6,1																		
4	DD	99,7	31,1	6,22	4,2	3,1	2,5	1,3												
4	DISPLAY	22,1	1,1																	
4	DISTANT-END	99,2																		
4	DISTRIBUTION	2,3	6,3																	
4	FEET	2,1																		
4	FLAT	6,1	99,7	68,1																
4	HITS	2,1																		
4	HOOKUP	6,1																		
4	IMMEDIATE	99,3	2,1																	
4	MAINTENANCE	1,1	99,10	98,1	31,4	9,1	6,29	4,10	3,3	2,5										
4	HAND-MADE	6,4																		
4	MAN-MADE	1,2																		
4	OPERATIVE	2,1																		
4	OPERATOR	6,1	1,6	99,1	68,5	22,3														
4	PMP	99,16	2,7	1,6	68,4	22,1	9,2	6,4												
4	QC	99,11	68,1	22,1	9,1	6,19	4,2	3,1	2,7	1,3										
4	RECORD	31,1	6,1																	
4	REGISTRATION	1,1																		
4	RELAY	6,2																		
4	REVERSE	99,6	2,1																	
4	SET-UP	3,1	2,1																	
4	SOP	6,2																		
4	SPIKES	6,7																		
4	SQT	22,1																		
4	STEP-BY-STEP	6,2																		
4	SUPPLY	99,2	9,1	6,1																
4	TAMMS	2,1	99,1	6,1																
4	TECHNICIAN	1,7	3,2	2,8	99,4	98,1	22,1	6,33	4,1											
4	TIME	99,1	3,4	2,1																
4	THU																			

4-102 (Rev. 1-68) U.S. GOVERNMENT PRINTING OFFICE: 1968 O - 348-000

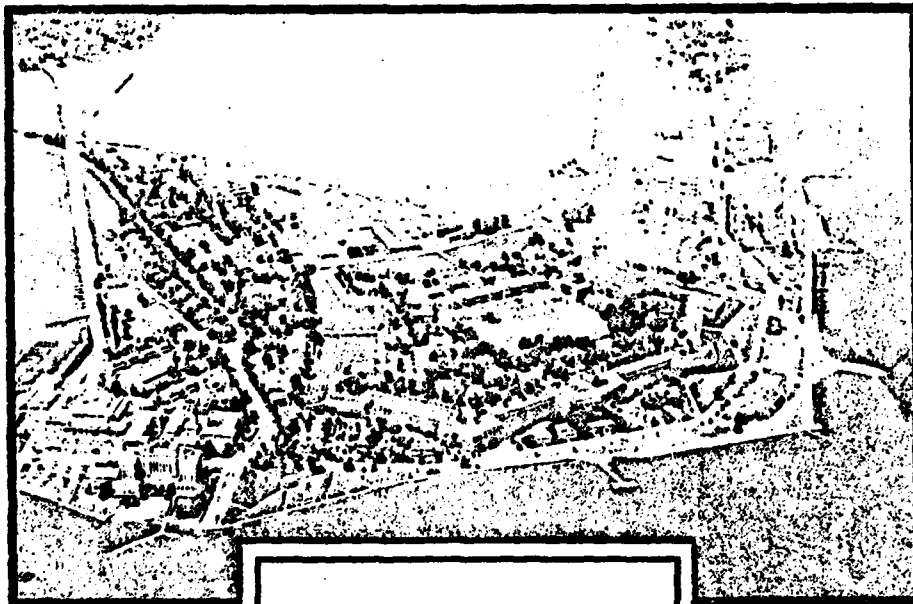
MOS WORD LIST BY PAGE

DATE 81007 1726 PAGE 9

4	URGENT	6:1							
4	NIGHT	2:3							
9	AIRRAKE	2:3							
9	ALLIGATORS	3:1							
9	HACK	68:1	6:3	3:1	2:1				
9	DIAPY	2:1							
9	BREAKOUT	1:1							
9	CLAR	3:1							
9	DAILY	2:3	98:3	6:1	4:1	3:2	99:1		
9	DIRECT	31:1	9:1	6:4					
9	DISTANT	22:1	6:29	2:3	1:1	99:4	68:1		
9	DCCC	2:1	6:2						
9	DDAAC	2:2							
9	DSC	99:1							
9	GRAPH	22:1	6:8						
9	GROUNDED	2:1							
9	HEWLETT	22:2							
9	HISTORY	2:1							
9	LIEU	2:1							
9	NCS	3:1	6:1						
9	JEM	6:1							
9	OVERALL	3:1							
9	PAP	1:1	2:1						
9	PERIODIC	99:5	9:1	6:2	2:3				
9	PLIERS	6:1							
9	POWER	6:1	2:45	1:1					
9	RCP	6:1							
9	RECEIVE	99:3	22:4	6:7	2:7	1:3			
9	RECEPTACLE	2:1							
9	RF	1:4							
9	SCCN	6:2							
9	SPURIOUS	99:1							
9	SPURS	1:3							
9	TEMPORARILY	99:1							
9	TM	98:5	31:1	6:3	3:2	2:1			
9	USACC	98:2							
9	VOLTAGE	1:4	99:1	2:4					
9	VOLUME	99:38	68:3	22:5	9:4	6:11	3:4	2:18	1:1
9	V2-V1	2:1							
9	ZULU	1:1	6:3						

**HEADQUARTERS**  
**UNITED STATES ARMY TRAINING AND DOCTRINE COMMAND**  
**FORT MONROE, VIRGINIA 23651**

DATA CONTROL NUMBER \_\_\_\_\_  
JOB NO / PROJECT NO



Word Criticality Analysis

MOS: 32D

Skill Level 2

PREPARED BY: OPERATIONS DIV, DPFO

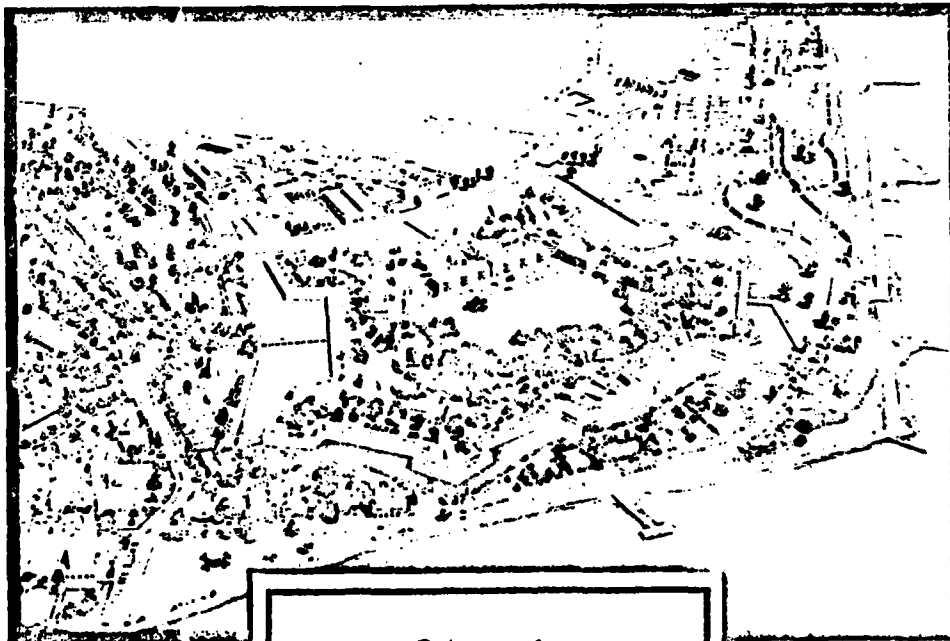
COPY \_\_\_\_\_ OF \_\_\_\_\_ COPIES

FORM  
ATOP Oct 68 109-1 Feb 68 edition may be used  
until exhausted.

**HEADQUARTERS**  
**UNITED STATES ARMY TRAINING AND DOCTRINE COMMAND**  
**FORT MONROE, VIRGINIA 23651**

DATA CONTROL NUMBER \_\_\_\_\_  
JOB NO / PROJECT NO

WCA  
JAN 9 1981  
ORAD



WORD CRIT. MOS-32D  
Skill Level-2

KI = (A)  
P = (C)

COPY \_\_\_\_\_ OF \_\_\_\_\_ COPIES

PREPARED BY: OPERATIONS DIV, DPFO  
ATDP FORM 109 Replaces ATDO 116, Jul 75, which is obsolete

MIS WORD LIST BY PAGE

DATE 01006 1721 PAGE 1

*M.S. 3011  
Skill Test  
2*

1	AMPLIFIER	1.1		
1	AMPLITUDE	1.1		
1	AMPLIFIER	50.1		
1	ANALYZER	1.1		
1	APPLIED	219.1		
1	CALIBRATION	50.1		
1	CARRIER	1.7		
1	CCSO	1.7		
1	CIRCUIT	219.3	50.2	1.34
1	COMMUNICATE	50.1		
1	CURRENT	50.1		
1	DATA	1.5	50.4	
1	DB	50.2		
1	DBM	219.1	50.6	
1	DBFO	50.2		
1	DBA	1.4		
1	DBAC	219.1	1.11	
1	DBAM	1.2		
1	DBS	1.8	50.1	
1	DB	1.7		
1	DEACTIVATION	1.1		
1	DELAY	1.7	219.13	
1	DEVIATION	219.2		
1	DEBITS	1.1		
1	DISTORTION	50.1	1.1	219.2
1	DUPLEX	1.2		
1	EM	50.2		
1	GENERATOR	219.8	50.9	1.3
1	GROUP	1.1		
1	HARMONIC	50.4		
1	HT	219.1		
1	ICD	1.4		
1	IMPEDANCE	219.12	50.6	
1	IMPULSE	50.2		
1	INTERMODULATION	219.2		
1	INTERRUPTION	50.1		
1	JITTER	50.1		
1	KHZ	219.23	50.16	
1	LEVEL	219.17	50.30	1.2
1	LONGITUDINAL	219.1		
1	LOSS	219.3		
1	OSCILLOSCOPE	50.1		
1	REFLECTION COEFFICIENT	1.1		
1	RECORDER	1.1		
1	REGISTER	50.1		
1	SENSITIVITY	50.1		
1	SPECTRUM	1.1		
1	SUPERGROUP	1.1		
1	TD-RM	1.2		
1	TD-GRM	1.2		

WTS WORD LIST BY PAGE

DATE 91006 1721 PAGE 2

1	TO-999	1,1		
2	ADDC	1,4		
2	ADJUST	50,1		
2	CHANNEL	1,2	219,6	50,1
2	CONTACT	50,1	1,2	
2	CONTROLLER	1,1		
2	COORDINATE	50,1		
2	COUNTER	1,1	219,1	50,1
2	DIGITAL	1,1		
2	DISTANT	1,2		
2	DESTRAYIONS	50,1		
2	DURATION	1,2		
2	ELEMENT	1,3		
2	END-TO-END	219,4		
2	ENCLOSURE	1,1	219,5	
2	EVALUATIONS	50,2		
2	FILTER	50,1		
2	FORMAT	1,6		
2	FREQUENCIES	1,1	219,4	
2	FUNCTION	1,2		
2	FUNDAMENTAL	50,1		
2	GENERATE	50,2		
2	INSTRUMENTS	50,1		
2	MESSAGE	1,15		
2	METER	50,2	1,1	
2	MIPRAND	219,6	50,2	
2	NOISE	219,3	50,2	
2	NOG	1,3		
2	MULTIPoint	1,1		
2	NARROWBAND	219,9	50,5	
2	OFF-HOOK	50,1		
2	OHM	219,6		
2	ON-CALL	1,7		
2	ON-LINE	219,4		
2	OPERATE	1,1		
2	ORIGINATOR	1,5		
2	OUTPUT	219,8	50,10	
2	PAD	50,1		
2	PARAMETER	1,6		
2	PATCH	1,11		
2	PHASE	50,1		
2	PILOT	1,2		
2	POWER	1,1		
2	PP	50,1	1,3	
2	RECEIVE	219,3	1,3	
2	REGENERATIVE	1,1		
2	REROUTE	219,2		
2	RESTORATION	1,8		
2	ROUTING	1,3		
2	PP	1,1		

WDS WORD LIST BY PAGE

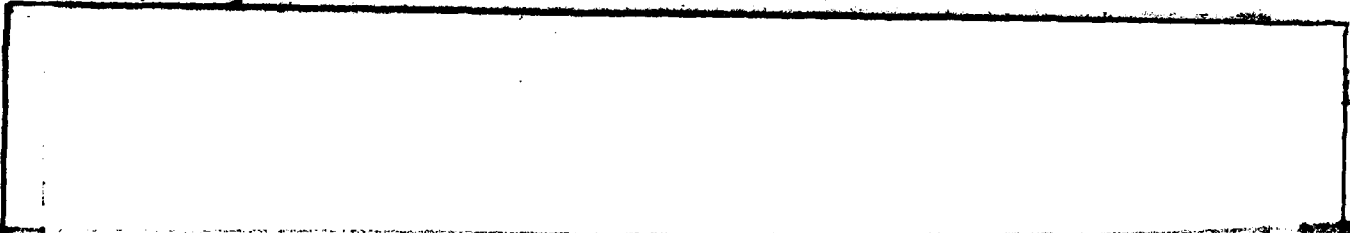
DATE 81C06 1721 PAGE 3

2	SCOOP	50,1		
2	SEND	1,4		
2	SETTINGS	50,1		
2	SIGNAL	219,8	50,7	
2	STANDARD	50,2	1,9	219,4
2	SYSTEM	1,2		
2	TELETYPEWRITER	1,2		
2	TERMINAL	50,1		
2	TOLERANCE	1,1		
2	TONE	50,8		
2	TRAFFIC	219,2	1,3	
2	TRANSMISSION	50,1	1,2	
2	TRUNK	1,3		
2	TSC	1,56		
2	TSD	1,3		
2	VARIATION	219,2		
2	VOICE	1,3		
2	VOLTMETER	219,1	50,1	1,1
2	VOLUME	1,29	219,1	
2	WEIGHTING	50,1		
2	WIDERAND	219,7	50,7	
2	ZULU	1,3		
3	ADJUSTMENTS	219,4		
3	CODE	1,2		
3	COMMERCIAL	1,12		
3	CONFERENCE	1,7		
3	DESIGNATOR	1,2		
3	ENTRY	1,2		
3	INDICATOR	50,2		
3	PATH	219,2	1,5	
3	RATE	1,2		
3	RESCHEDULE	50,1		
3	SECURITY	1,3		
3	SOUND	50,1		
3	SPACE	1,1		
3	SURMET	1,4		
3	SWITCH	50,1		
3	TELECOM	1,6		
4	LOG	1,10		
4	MEASURE	219,1	1,1	
4	MINIMUM	219,1		
4	NOISE	219,1	50,9	
4	NOTICE	1,4		
4	SELECTIVE	219,2		
4	SET	50,5		
4	SUBSTANDARD	1,1		
4	UNITS	50,1		
5	ATMOSPHERE	50,2		
5	BALANCE	219,1		
6	CHART	219,1		

405 WORD LIST BY PAGE

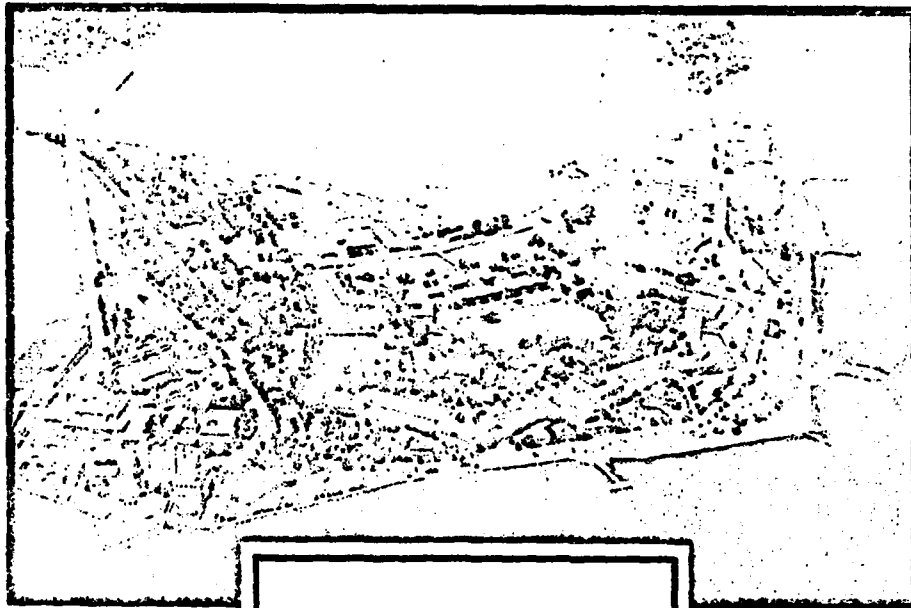
DATE 11006 1721 PAGE 4

5	FIGURES/PICTURE	1.4		
5	EQUIPMENT	1.6	219.7	50.7
5	EXCEPTION	1.15		
5	IDENTICAL	219.2		
5	INPUT	219.10	50.7	
5	INSTALL	1.1		
5	INSTALLATION	1.2		
5	LOCATION	50.1	1.3	
5	MANUAL	1.1		
5	MAXIMUM	50.7	219.3	
5	METHOD	219.4		
5	READING	50.2		
5	REDUCE	50.1		
5	REPORT	219.1	1.47	
5	SCHEDULE	50.1	1.1	
5	WORKSHEET	50.2	1.3	
5	ZERO	50.1		



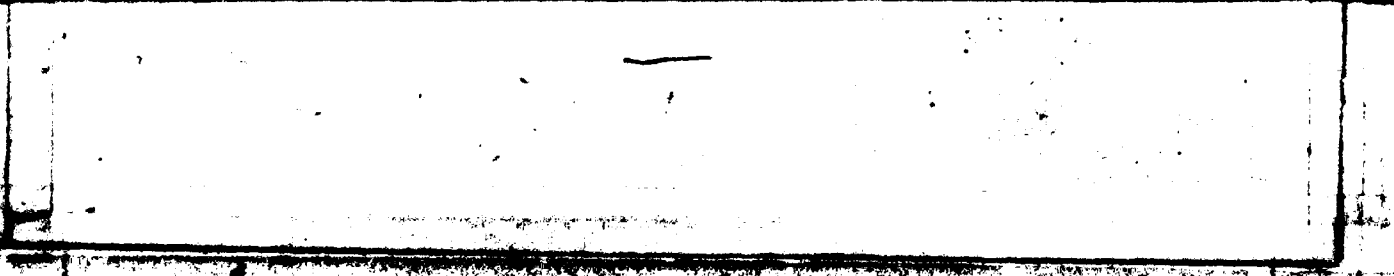
**HEADQUARTERS**  
**UNITED STATES ARMY TRAINING AND DOCTRINE COMMAND**  
**FORT MONROE, VIRGINIA 23651**

DATA CONTROL NUMBER            /             
JOB NO / PROJECT NO



PREPARED BY: OPERATIONS DIV, DPFO  
ATDP <sup>FORM</sup> Oct 66 109-1 Feb 66 edition may be used until exhausted.

COPY \_\_\_\_\_ OF \_\_\_\_\_ COPIES



END

DATE  
FILMED

8 8 2

DT