

AD A116615

④

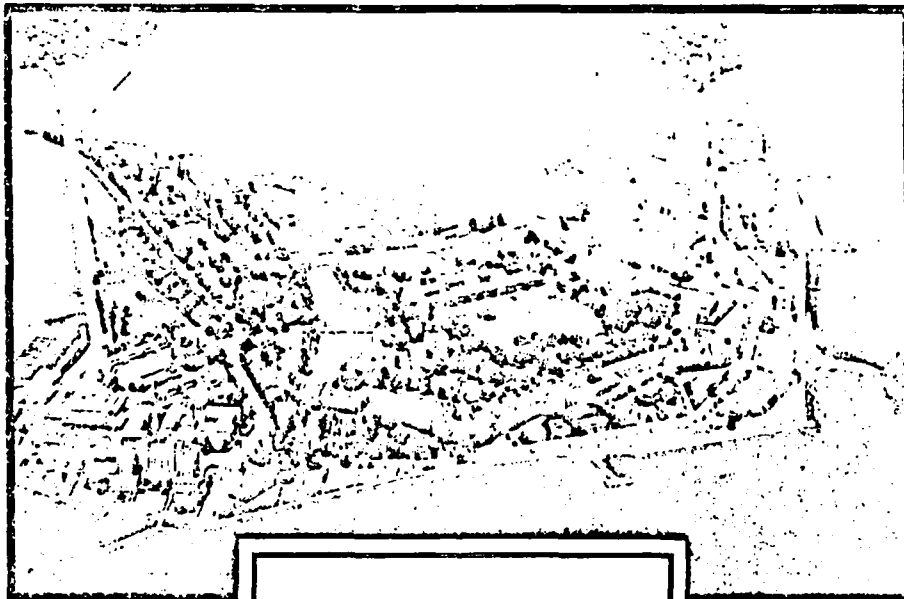
HEADQUARTERS

DATA CONTROL NUMBER

100 NO / PROJECT NO

UNITED STATES ARMY TRAINING AND DOCTRINE COMMAND

FORT MONROE, VIRGINIA 23651



Copy available to DTIC does not permit fully legible reproduction

DISTRIBUTION STATEMENT A
Approved for public release;
Distribution unlimited

DTIC
ELECTE
JUL 8 1982
H

Word Criticality Analysis
MOS: 44B
Skill Levels 1 & 2

PREPARED BY: OPERATIONS DIV, DPFO

ATDP FORM
Oct 50 109-1 Feb 50 edition may be used
until exhausted.

COPY ___ OF ___ COPIES

82 07 06 219

DISCLAIMER NOTICE

**THIS DOCUMENT IS BEST QUALITY
PRACTICABLE. THE COPY FURNISHED
TO DTIC CONTAINED A SIGNIFICANT
NUMBER OF PAGES WHICH DO NOT
REPRODUCE LEGIBLY.**

UNCLASSIFIED

SECURITY CLASSIFICATION OF THIS PAGE (When Data Entered)

REPORT DOCUMENTATION PAGE		READ INSTRUCTIONS BEFORE COMPLETING FORM
1. REPORT NUMBER 44B	2. GOVT ACCESSION NO. AD-4116615	3. RECIPIENT'S CATALOG NUMBER
4. TITLE (and Subtitle) Word Criticality Analysis MOS: 44B Skill Level: 1/2		5. TYPE OF REPORT & PERIOD COVERED Final
7. AUTHOR(s) Dr. Alexander A. Longo		6. PERFORMING ORG. REPORT NUMBER
9. PERFORMING ORGANIZATION NAME AND ADDRESS Training Developments Institute ATTN: ATTC-DOR Fort Monroe, VA 23651		8. CONTRACT OR GRANT NUMBER(s)
11. CONTROLLING OFFICE NAME AND ADDRESS Training Developments Institute ATTN: ATTC-DOR Fort Monroe, VA 23651		10. PROGRAM ELEMENT, PROJECT, TASK AREA & WORK UNIT NUMBERS
14. MONITORING AGENCY NAME & ADDRESS (if different from Controlling Office)		12. REPORT DATE Sep 1981
		13. NUMBER OF PAGES 19
		15. SECURITY CLASS. (of this report) Unclassified
		15a. DECLASSIFICATION/DOWNGRADING SCHEDULE
16. DISTRIBUTION STATEMENT (of this Report) Approved for Public Release; Distribution is unlimited.		
17. DISTRIBUTION STATEMENT (of the abstract entered in Block 20, if different from Report)		
18. SUPPLEMENTARY NOTES		
19. KEY WORDS (Continue on reverse side if necessary and identify by block number) MOS Vocabulary Readability Comprehension of text Curriculum Development		
20. ABSTRACT (Continue on reverse side if necessary and identify by block number) This report contains terms selected as having some degree of criticality in the training/performance of tasks contained in the respective MOS Soldier's Manual (SM). These critical words were selected by subject matter/job experts knowledgeable in their MOS. The vocabulary set used as the basis for critical word analysis was the Word Frequency Report based on the SM for the same MOS.		

DD FORM 1 JAN 72 1-73 EDITION OF 1 NOV 65 IS OBSOLETE

UNCLASSIFIED
SECURITY CLASSIFICATION OF THIS PAGE (When Data Entered)

Contents and General Information

1. The Word Criticality Analysis (WCA) reports were reproduced exactly as generated via computer printout. The prime users of this document were fully cognizant of its contents and required no special instructions for interpretation. However, for the sake of other readers, the following brief description of contents is provided.

2. The WCA reports for most MOS are divided as follows:

- o Skill Level I
- o Skill Level II

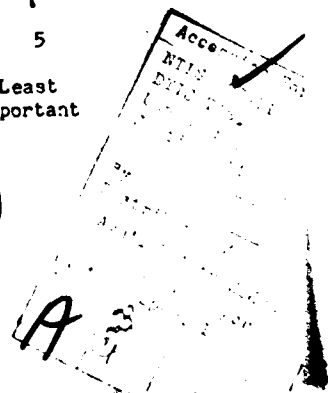
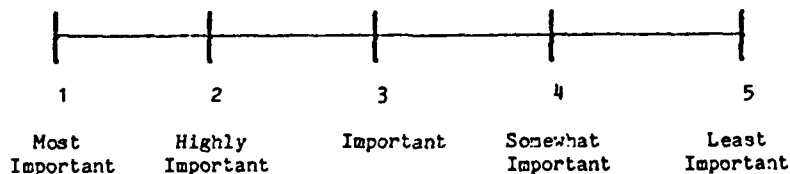
However, due to the way some Soldier Manuals are constructed, the WCA for some MOS have both Skill Levels merged into one report. Each Skill Level is subdivided into two sections.

a. Introductory - these MOS critical words, identified by the code "TRN", represent terms unmatched on the master tape for that MOS. (Reasons for this include: words volunteered as critical; keypunching errors; updating master tapes per changes in SM, etc). NOTE: The number to the left of each critical word is its criticality index defined below.

b. Main - these MOS critical words are ranked alphabetically within a criticality index (defined below) that also is ranked from 1-5. The numbers to the right of the critical words represent the SM page on which that term appeared and its frequency of appearance. Example "222,4" is interpreted as: "4 times on page 222". NOTE: Due to computer programming/sort difficulties, the accuracy of correct page referencing is only approximately 80% for most reports. Improvements in programming and coding increased this accuracy to 95% in those reports completed last (i.e., dated Jan-Mar 82).

3. Word Criticality Index:

The following 5 point rating scale was used by a team of up to 3 subject matter experts from Army MOS proponent schools to rate each word selected as having some importance for training/performing a critical task:

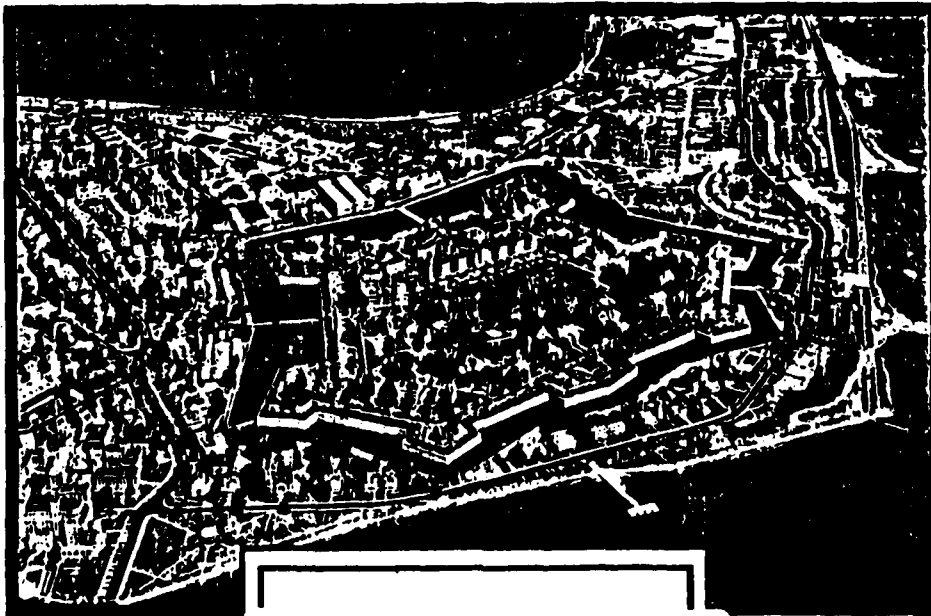


HEADQUARTERS
UNITED STATES ARMY TRAINING AND DOCTRINE COMMAND
FORT MONROE, VIRGINIA 23651

DATA CONTROL NUMBER /
JOB NO / PROJECT NO

WCA
9 FEB 1982

ORAN
Up data



WORD CRITICALITY MERGED
MOS 44B
SKILL 1 & 2

PREPARED BY: OPERATIONS DIV. DPFO

ATDP FORM 109 September 1980, 1st FA, 1980 is obsolete

COPY _____ OF _____ COPIES

SEQUENTIAL DATA MANAGER

PAGE NO

2 TYPE

RECORD BYTES

	PAGE NO	2 TYPE	RECORD BYTES
5 ABILITY		TRN	26
5 ACCEPT		TRN	26
5 ACCEPTABLE		TRN	26
4 ACCOMPLISHED		TRN	26
3 ACCURATELY		TRN	26
2 ACTU		TRN	26
3 ACTION		TRN	26
5 ACTUAL		TRN	26
1 ADAPTER		TRN	26
1 ADDRESS		TRN	26
6 ADJUSTING		TRN	26
2 ADJUSTMENTS		TRN	26
5 ADJUST		TRN	26
1 ALIGN		TRN	26
1 ALIGNER		TRN	26
1 ALIGNING		TRN	26
4 ALLOY		TRN	26
4 ALLOWABLE		TRN	26
4 ALONG		TRN	26
2 AMERICAN		TRN	26
4 APPEAR		TRN	26
1 APPEARANCE		TRN	26
2 APPLIES		TRN	26
2 APPROXIMATE		TRN	26
2 APPROXIMATIONS		TRN	26
1 ASSEMBLE		TRN	26
1 ASSEMBLED		TRN	26
1 ASSEMBLY		TRN	26
1 ATTACHMENTS		TRN	26
2 AVIATION		TRN	26
2 AXES		TRN	26
2 BACKWARD		TRN	26
1 BATTERIES		TRN	26
1 BAY		TRN	26
1 BARRIER		TRN	26
1 BAYS		TRN	26
2 BACE		TRN	26
4 BASIC		TRN	26
3 BATTERY		TRN	26
1 BEAD		TRN	26
4 BECH		TRN	26
4 BLEND		TRN	26
1 BLEVEED		TRN	26
1 LEVELS		TRN	26
4 BLEND		TRN	26
2 BEE		TRN	26
3 BLENDS		TRN	26
4 BLEND		TRN	26
2 BLENDING		TRN	26
1 BLENDING		TRN	26
1 BLENDING		TRN	26

1 ROUNDED	TRN		26
4 BUTTIN	TRF		26
2 FOX	TRF		26
3 BRACKETS	TRF		26
1 GRASS	TRN		26
3 BRICKS	TRN		26
1 PRITTLE	TRN		26
1 BRONZE	TRF		26
1 RUBBLES	TRN		26
1 RUFFED	TRN		26
1 BUSTER *	TRN		26
1 RUTT	TRN		26
1 CARLE	TRN		26
1 CARBINIZING	TRF		26
2 CASE	TRN		26
1 CAFT	TRN		26
3 CATEGORIES	TRN		26
1 CHARACTERISTICS	TRN		26
3 CHICKEN	TRN		26
2 CHICKS *	TRN		26
2 CHEMICAL	TRN		26
1 CHIP	TRN		26
1 CLEARLY	TRN		26
3 CLEARANCE	TRN		26
5 CLEARLY	TRN		26
4 CLOCKWISE	TRN		26
4 CLIPPING	TRN		26
3 CLISE	TRN		26
2 CLOTH	TRN		26
3 COARSE	TRN		26
1 COCK	TRF		26
5 COLUMN	TRN		26
3 CUPPIN	TRN		26
3 COMPLETELY	TRF		26
5 COMPOSED	TRN		26
1 CONDUCT *	TRN		26
4 CONFUSING	TRF		26
1 CONNECT	TRN		26
1 CONNECTION	TRN		26
2 CONTACTS *	TRN		26
2 CULL	TRN		26
1 CURBER	TRN		26
2 CORRECTIVE	TRN		26
1 COUNTERSTIM	TRN		26
2 COUNTERSINK	TRN		26
4 COVERAGE	TRN		26
1 CRACKS	TRF		26
1 CRATERS	TRN		26
5 CRAYONS	TRN		26
1 CRITICAL	TRN		26
1 CROSS-BENMARK	TRN		26

SEQUENTIAL DATA MANAGER

PAGE NO

4 TYPE

RECORD BYTES

	PAGE NO	4 TYPE	RECORD BYTES
1 CRIMP		TRN	26
1 CRYSTALLIZATION		TRN	26
3 CUP		TRN	26
4 CURE		TRN	26
1 CYLINDER		TRN	26
9 DASHES		TRN	26
9 DATA		TRN	26
1 DIMENSIONS		TRN	26
3 DEMONSTRATE		TRN	26
3 DEMONSTRATED		TRN	26
3 DEMATUPED *		TRN	26
9 DEFECT		TRN	26
9 DEFECTS		TRN	26
1 DEPOSIT		TRN	26
1 DEPOSITS		TRN	26
3 DEPTH		TRN	26
3 DESCRIBE		TRN	26
3 DESIGNS		TRN	26
9 DETERMINED		TRN	26
9 DEVICE		TRN	26
9 DIG		TRN	26
1 DIMENSIONALLY		TRN	26
4 DIRECTIONS		TRN	26
2 DISASSEMBLE		TRN	26
2 DISCONNECT		TRN	26
4 DISTANCE		TRN	26
3 DISTINGUISH		TRN	26
2 DRAIN		TRN	26
2 DRAINED		TRN	26
1 DRAWN		TRN	26
2 DRESS		TRN	26
2 DRESSED		TRN	26
1 ELECTRICAL		TRN	26
9 ELONGATED		TRN	26
4 END		TRN	26
4 ENDS		TRN	26
3 ESTABLISHED		TRN	26
5 EVEN		TRN	26
4 EVENLY		TRN	26
4 EVIDENT		TRN	26
3 EXACT		TRN	26
5 EXAMPLE		TRN	26
1 EXHAUST		TRN	26
5 EXTEND		TRN	26
9 EXTENDS		TRN	26
9 EXTENT		TRN	26
1 FACE		TRN	26
1 FACILITATE		TRN	26
2 FAILURE		TRN	26
9 FEATURES		TRN	26
9 FERRIUS		TRN	26

	5	TYPE	RECD	BYTES
1 FILES		TRF		26
1 FILLERS		TRF		26
1 FILLET		TRF		26
3 PIPE		TRF		26
5 FIRMLY		TRF		26
5 FIVE		TRF		26
4 FIXED		TRF		26
2 FLANKING		TRF		26
1 FLANKS		TRF		26
2 FLATHEAD		TRF		26
3 FLAW		TRF		26
4 FLEXIBLE		TRF		26
1 FLOW		TRF		26
1 FLOWS		TRF		26
4 FLUID		TRF		26
1 FLUSH		TRF		26
2 FLUSHING		TRF		26
1 FLUXES		TRF		26
5 FUMING		TRF		26
1 FURLINGS		TRF		26
4 FUJIT		TRF		26
4 FORCE		TRF		26
1 FOREHAND		TRF		26
1 FOREHAND		TRF		26
4 FOMK		TRF		26
4 FRONT		TRF		26
4 FT *		TRF		26
1 FUSES		TRF		26
1 FUSED		TRF		26
1 FUSION		TRF		26
1 GLASSES		TRF		26
4 GU *		TRF		26
4 GRADFD		TRF		26
4 GRADING		TRF		26
1 GRILLE		TRF		26
1 GRASSAY		TRF		26
1 HARD		TRF		26
1 HARDNESS		TRF		26
1 HEAD		TRF		26
1 HEATING		TRF		26
5 HEAVY		TRF		26
2 HEIGHT		TRF		26
4 HELD		TRF		26
9 HIDDEN		TRF		26
2 HIGHER		TRF		26
3 HOLE		TRF		26
2 IDENTIFICATION		TRF		26
3 IDENTIFIED		TRF		26
1 IDENTUP		TRF		26
1 INKES		TRF		26
9 INCLUDED		TRF		26

SEQUENTIAL DATA MANAGER

PAGE NO

6 TYPE

RECORD BYTES

1 INCLUSIONS	TRN		26
5 INDICATE	TRN		26
9 INDICATING	TRN		26
9 INDUCE	TRN		26
1 INLET	TRN		26
3 INLET	TRN		26
1 INSEPT	TRN		26
2 INSPECTION	TRN		26
5 INSTALLED	TRN		26
2 INTERPRET	TRN		26
2 IRON *	TRN		26
3 IRREGULARITY	TRN		26
1 JACKET	TRN		26
1 KIDDLING	TRN		26
3 LAP *	TRN		26
1 LAYER	TRN		26
1 LEAD	TRN		26
1 LEAD *	TRN		26
4 LEADER	TRN		26
1 LEADS	TRN		26
4 LEAKPROOF	TRN		26
1 LEATHER *	TRN		26
5 LEAVING	TRN		26
3 LEFTHAND	TRN		26
1 LENS *	TRN		26
5 LESS	TRN		26
3 LIT *	TRN		26
2 LITE	TRN		26
2 LONG	TRN		26
3 LOOSE	TRN		26
3 LOWER	TRN		26
1 MAGNIFYING	TRN		26
1 MAINTAINING	TRN		26
4 MAKING	TRN		26
3 MANUAL *	TRN		26
3 MAR	TRN		26
1 MARKS	TRN		26
1 BELTS	TRN		26
3 MEMBERS	TRN		26
1 MILL	TRN		26
3 MINIMUM	TRN		26
1 MIXING *	TRN		26
2 MODIFICATION	TRN		26
2 MOISTURE	TRN		26
3 MOUNTED	TRN		26
5 MOVEMENT	TRN		26
4 MUFFLE	TRN		26
4 NEAR	TRN		26
4 NEAT	TRN		26
3 NECA	TRN		26
4 NEETING	TRN		26

3	NEEDLE *	TRN	26
1	NEGATIVE	TRN	26
1	NICKLE	TRN	26
4	NO-GU	TRN	26
4	NORMAL	TRN	26
4	NOTED	TRN	26
5	NOTES	TRN	26
4	NUMBERING	TRN	26
3	OBJECT	TRN	26
2	OBTAIN	TRN	26
2	OPENING	TRN	26
1	OPERATIONAL	TRN	26
1	ORANGE	TRN	26
4	DROPPED	TRN	26
4	ORIFES	TRN	26
1	ORIFICE *	TRN	26
1	OUTLET	TRN	26
1	OUTLET	TRN	26
2	OUTLINES	TRN	26
1	OVERFLOW	TRN	26
1	OVERHEATING	TRN	26
1	OVERLAPPED	TRN	26
1	OVERLAPPING	TRN	26
1	OVERSPRAY	TRN	26
1	OXIDES	TRN	26
1	OXIDIS *	TRN	26
1	OXIDIS *	TRN	26
2	PAPALLEL	TRN	26
1	PEEL *	TRN	26
1	PENETRATION	TRN	26
1	PERPENDICULAR	TRN	26
1	PICKUP	TRN	26
2	PIECE	TRN	26
1	PINHOLE	TRN	26
1	PIPES	TRN	26
2	PITS	TRN	26
4	PLACED	TRN	26
3	PLASTIC/FILLERS	TRN	26
1	PLATES	TRN	26
5	PLUNGING	TRN	26
2	PM *	TRN	26
4	PUNCTION	TRN	26
1	POSTHEAT	TRN	26
2	POSTHEATING	TRN	26
4	POUR	TRN	26
3	PREPARED	TRN	26
5	PREVIOUS	TRN	26
5	PREVIOUSLY	TRN	26
1	PRINT	TRN	26
2	PROCESS	TRN	26
1	PROCESSES	TRN	26
2	PRODUCE	TRN	26

SEQUENTIAL DATA MANAGER

PAGE NO

TYPE

RECORD BYTES

	PAGE NO	TYPE	RECORD BYTES
4 PROVIDED		TRN	26
2 PSI *		TRN	26
1 PUNCH		TRN	26
3 QUALIFIED		TRN	26
3 QUALIFYING		TRN	26
5 RAISE		TRN	26
2 RATE		TRN	26
3 RATING		TRN	26
2 RATIO		TRN	26
3 REACTING		TRN	26
4 READY		TRN	26
3 RECORDED		TRN	26
3 REFER		TRN	26
2 REPEAT		TRN	26
1 REINFORCEMENT		TRN	26
5 RELATION		TRN	26
2 REMOVAL		TRN	26
3 REPRESENTING		TRN	26
2 REQUESTED		TRN	26
2 RESERVE		TRN	26
2 RESIDUES		TRN	26
3 RESTRAINING		TRN	26
2 RETAINING		TRN	26
2 RETEST		TRN	26
2 RETESTED		TRN	26
2 RETRIE		TRN	26
1 REVERSE		TRN	26
3 RH *		TRN	26
1 RHEUSTAT		TRN	26
3 RIGHTMAIN		TRN	26
3 ROLLED		TRN	26
1 ROUT		TRN	26
4 PROVIDED		TRN	26
1 RULE		TRN	26
1 RUN		TRN	26
1 RUNS		TRN	26
1 SACS		TRN	26
1 SADDLED		TRN	26
3 SASH *		TRN	26
1 SEALERS		TRN	26
3 SECURE		TRN	26
2 SELECTION		TRN	26
3 SEPARATE		TRN	26
3 SEPARATED		TRN	26
2 SERVICE		TRN	26
2 SERVICED		TRN	26
1 SETTINGS		TRN	26
4 SHAF		TRN	26
1 SHIELDING		TRN	26
1 SHUNT		TRN	26
1 SINGLE		TRN	26

5 SITUATION		TRN	26
3 SITUATIONS		TRN	26
3 SLIDING		TRN	26
3 SLIGHTLY		TRN	26
1 SMALL		TRN	26
3 SOLUTION		TRN	26
3 SOLUTIONS		TRN	26
1 SPACED		TRN	26
1 SPACED		TRN	26
1 SPARK		TRN	26
1 SPATTER		TRN	26
4 SPECIAL		TRN	26
2 SPECIAL		TRN	26
1 SPEED		TRN	26
2 SPINDLE		TRN	26
2 STARTING		TRN	26
1 STENCILING		TRN	26
1 STENCILS		TRN	26
1 STONE *		TRN	26
4 STOPPED		TRN	26
3 STOKED		TRN	26
1 STRAIGHT		TRN	26
2 STRAIN		TRN	26
2 STRAP		TRN	26
2 STRAPS		TRN	26
3 STRESS *		TRN	26
1 STRINGER		TRN	26
2 STRING		TRN	26
5 SUBMERGE		TRN	26
3 SUBSEQUENT		TRN	26
4 SUFFICIENT		TRN	26
3 SUPPORTS		TRN	26
5 TAN		TRN	26
5 TAKEN		TRN	26
1 TECHNIQUES		TRN	26
1 TEF		TRN	26
1 TEMPERATURE		TRN	26
3 TERMINATING		TRN	26
1 TESTS		TRN	26
1 THICKNESS		TRN	26
1 THINERS		TRN	26
4 THOROUGH		TRN	26
4 THOROUGHLY		TRN	26
3 THREE		TRN	26
2 TIGHT		TRN	26
1 TITANIUM		TRN	26
1 TOE		TRN	26
3 TOGETHER		TRN	26
4 TUP		TRN	26
4 TOTAL		TRN	26
4 TRASH		TRN	26

SEQUENTIAL DATA MANAGER

PAGE NO

IO TYPE

RECORD BYTES

1 TRAVEL				TRN	26
5 TRIANGLE				TRN	26
2 TURNING				TRN	26
2 TURN				TRN	26
2 TYPES				TRN	26
1 UNDERCUT				TRN	26
1 UNDERSPRAY				TRN	26
1 UNIFORM				TRN	26
3 UPPER				TRN	26
4 UPWARD				TRN	26
5 USUALLY				TRN	26
1 VERTICALLY				TRN	26
5 VISIBLE				TRN	26
1 VISUAL				TRN	26
1 WAX				TRN	26
5 WAY				TRN	26
1 WEATHERSTRIP				TRN	26
1 WET				TRN	26
1 WIDE				TRN	26
1 WIDTH				TRN	26
4 WIPE				TRN	26
4 WIPED				TRN	26
4 WIPING				TRN	26
1 WORKREST				TRN	26
1 WORKSHEET				TRN	26

MASTER READ
LNRECL
BLKSIZE

8465
32
3136

TRANS READ
LNRECL
BLKSIZE

1074
26
2000

UPDATED RECORDS
LNRECL
BLKSIZE

4966
32
3136

SYNCSORT IV-AND-3-DATE COPYRIGHT WHITLOW COMPUTER SYSTEMS, INC., 1979, REL. 2.3EN. DATE=02/039. TIME=13.11.29.
MVT REI 21.8 CPU MODEL 65

SJPT FIELDS=(1,23,CM,A)
WER134B UCN PARM MISSING ON SJRTIN DN
WER164H CURE AVAIL 0114689,REQ MAX ,USED 0114688
WER151B SECONDARY EXTENTS OBTAINED 0n0
WER039B B = 62
WER034B JMAX = 247216
WER163B TRCKS-PRIM=000760,SEC=00000,REL=00000
WER037B G = 1566
WER137B DATA BIAS = 00
WER124I TRK OVER-ALLOC FACTOR, PRIM/USED=047
WER049C END SJPT.PH
WER246I FILESIZE 146,112 BYTES
WER054I RCD I# 4564, QUT 4566
WER169I TPF'S APPLIED 1234
WER052I I ID SYNCSORT OPT# N, THER0107,STEP5

MHS WORK LIST BY PAGE

DATE 82039 1311 PAGE

	2- 54,1	2- 53,1	2- 42,1	2- 51,1	2- 50,2	2- 49,2	2- 47,3	2- 85,2	2- 83,3	2- 81,4
	2- 79,1	2- 77,2	2- 75,2	2- 63,2	2- 61,1	2- 60,1	2- 56,1	2- 55,1	2- 93,2	2- 91,2
	2- 90,3	2- 89,2	2-101,1	2- 98,1	2- 97,1	2- 96,2	2- 95,2	2- 94,2		
	2- 81,1	2- 80,1	2- 77,1	2- 75,1	2- 68,1	2- 30,3	2- 18,3	2- 9,2		
1 OVERLAP	2- 40,5									
1 OVERLAY	2-102,1									
1 OXIDATION	2- 31,1	2- 30,1	2- 58,1	2- 26,1	2- 14,1					
1 OXINE	2- 61,1									
1 OXIDIZING	2- 22,2	2- 20,2	2- 16,2	2- 7,2	2- 14,3	2- 12,2	2- 11,2	2- 9,2	2- 90,1	2- 87,2
1 OXYACETYLENE	2- 85,2	2- 83,2	2- 67,2	2- 66,1	2- 64,2	2- 63,1	2- 61,3	2- 60,2	2- 54,1	2- 53,1
	2- 49,1	2- 44,2	2- 43,2	2- 41,2	2- 91,2	2- 94,1	2- 93,2			
1 OXYACETYLENE	2- 11,1	2- 9,1								
1 PAINT	2- 98,3	2- 97,4	2- 96,3	2- 52,3	2- 48,1					
1 PAINTED	2- 97,1	2- 56,1								
1 PAINTING	2- 97,5	2- 56,6	2- 98,1							
1 PANEL	2- 54,7	2- 53,2	2- 49,1							
1 PAPA	2- 81,6	2- 83,5	2- 85,7	2- 87,4	2- 89,2	2- 90,4	2- 91,4	2- 93,2	2- 94,4	2- 95,2
	2- 96,3	2- 97,7	2- 98,2	2- 99,2	2-100,3	2-101,4	2- 90,4	2- 77,4	2- 75,4	2- 74,4
	2- 73,5	2- 72,4	2- 70,4	2- 68,4	2- 67,1	2- 66,2	2- 64,8	2- 63,2	2- 61,3	2- 60,1
	2- 59,1	2- 58,4	2- 57,7	2- 14,4	2- 36,6	2- 55,4	2- 54,2	2- 53,3	2- 52,2	2- 51,4
	2- 50,2	2- 49,1	2- 48,1	2- 47,1	2- 46,1	2- 44,5	2- 43,3	2- 41,3	2- 40,3	2- 39,1
	2- 37,4	2- 36,4	2- 35,4	2- 33,4	2- 31,5	2- 30,4	2- 28,4	2- 26,4	2- 24,1	2- 16,3
	2- 18,3	2- 17,2	2- 22,6	2- 20,8	2- 12,7	2- 11,6	2- 9,5	2- 7,4		
1 PART	2-100,1									
1 PARTS	2- 67,3	2- 51,1	2-102,1							
1 PASS	2- 18,1									
1 PASTE	2- 64,5									
1 PATCH	2- 41,4	2- 22,1	2- 89,1	2- 85,2	2- 83,4	2- 92,2	2- 44,2			
1 PATCHING	2- 83,1	2- 54,1	2- 52,1	2- 44,1	2- 41,1	2- 22,1				
1 PATTERN	2- 98,1	2- 37,1								
1 PENICIL	2- 11,2	2-100,1	2- 37,1	2- 20,2						
1 PERFORM	2- 7,2	2- 20,2	2- 18,5	2- 17,3	2- 16,1	2- 14,1	2- 12,2	2- 11,1	2- 9,1	2- 90,3
	2- 49,1	2- 48,1	2- 47,2	2- 37,2	2- 36,2	2- 35,2	2- 33,1	2- 31,2	2- 30,2	2- 28,2
	2- 26,2	2- 25,1	2- 22,1	2- 89,1	2- 81,2	2- 8,1	2- 79,2	2- 74,1	2- 73,1	2- 72,1
	2- 70,2	2- 66,1	2- 64,1	2- 60,3	2- 56,2	2- 53,1				
1 PERFORMANCE	2- 85,1	2- 87,1	2- 89,1	2- 90,1	2- 91,1	2- 93,1	2- 94,1	2- 95,1	2- 96,1	2- 97,1
	2- 99,1	2-100,1	2-101,1	2-102,1	2- 83,1	2- 81,2	2- 80,1	2- 77,1	2- 75,1	2- 74,1
	2- 73,1	2- 72,1	2- 70,1	2- 68,1	2- 67,1	2- 66,1	2- 12,2	2- 9,1	2- 16,1	2- 14,1
	2- 25,2	2- 24,1	2- 22,1	2- 20,1	2- 18,2	2- 17,1	2- 64,1	2- 63,1	2- 61,1	2- 60,1
	2- 59,1	2- 58,1	2- 57,1	2- 56,1	2- 55,1	2- 54,1	2- 52,1	2- 51,1	2- 50,1	2- 49,1
	2- 48,1	2- 47,1	2- 46,1	2- 44,1	2- 43,1	2- 41,1	2- 40,1	2- 39,1	2- 37,2	2- 35,1
	2- 36,1	2- 35,1	2- 30,1	2- 28,1	2- 26,1					
1 PERSONNEL	2- 61,1									
1 PIPE	2- 20,6	2- 11,6								
1 PLASTIC	2- 37,1									
1 PLATE	2- 89,2									
1 PLUGS	2- 46,1									
1 POINT	2- 57,2	2- 49,1								
1 POINTS	2- 97,1									
1 POLARITY	2- 68,1	2- 74,1	2- 73,1	2- 72,1	2- 70,1	2- 81,1	2- 80,1	2- 77,1	2- 75,1	

MMS WORD LIST BY PAGE

DATE 82039 1311 PAGE 8

	2- 60,1	2- 66,1	2- 63,1	2- 79,1	2- 81,1	2- 80,1	2- 90,1	2- 83,1	2- 85,1	2- 89,1
	2- 47,1	2- 72,1	2- 70,1	2- 74,1	2- 73,1	2- 93,1	2-101,1	2-100,1	2- 98,1	2- 96,1
	2- 95,1	2- 94,1								
1 SURFACE	2- 64,1	2- 56,2	2- 50,1	2- 17,1	2- 97,3	2- 96,1	2- 95,1	2- 91,5		
1 SURFACES	2- 93,1	2- 64,1	2- 47,1							
1 SWEAT	2- 44,1	2- 41,1								
1 SWITCHES	2-102,1									
1 TACK	2- 70,1	2- 61,1	2- 14,1	2- 12,1	2- 9,1	2- 7,1				
1 TACK	2- 41,2	2- 46,1	2- 44,1	2- 83,2	2- 85,1	2- 87,1				
1 TANKS	2- 41,1									
1 TAPL	2- 51,1	2- 81,1	2- 56,1	2- 97,1	2- 95,1					
1 TASK	2- 9,1	2- 7,1	2- 14,1	2- 12,2	2- 20,1	2- 18,4	2- 17,7	2- 16,7	2- 22,1	2- 11,1
	2- 36,1	2- 35,1	2- 39,7	2- 37,8	2- 26,1	2- 30,1	2- 28,1	2- 33,2	2- 31,1	2- 25,7
	2- 24,1	2-101,2	2-102,1	2-100,1	2- 99,2	2- 98,6	2- 95,1	2- 97,1	2- 96,7	2- 90,7
	2- 91,2	2- 94,1	2- 93,1	2- 89,1	2- 87,1	2- 85,4	2- 83,1	2- 81,2	2- 80,1	2- 79,1
	2- 77,1	2- 75,1	2- 70,1	2- 73,1	2- 72,1	2- 68,1	2- 74,1	2- 64,2	2- 67,1	2- 66,1
	2- 60,2	2- 59,7	2- 63,1	2- 58,1	2- 57,1	2- 56,1	2- 41,1	2- 43,1	2- 55,1	2- 50,7
	2- 54,7	2- 53,7	2- 52,1	2- 51,7	2- 44,1	2- 49,1	2- 48,1	2- 47,7	2- 46,1	2- 40,1
1 TECHNICAL	2- 16,3	2- 39,3	2- 37,3	2- 25,4	2- 18,1	2- 17,3	2- 50,3	2- 47,4	2- 51,3	2- 54,3
	2- 85,1	2- 63,1	2- 59,4	2- 56,1	2- 53,3	2- 90,3	2- 98,3	2- 96,3	2- 95,1	
1 TEMPER	2- 66,2									
1 TEMPERING	2- 66,1	2- 63,2								
1 TEST	2- 44,2	2- 43,2	2- 41,1	2- 25,1	2- 85,1	2- 46,4				
1 TESTED	2- 41,1	2- 44,1	2- 43,2	2- 83,1	2- 67,1					
1 TESTING	2- 46,1	2- 44,1	2- 87,1	2- 85,2	2- 83,1					
1 THICK	2- 64,1									
1 THIN	2- 57,1									
1 THINNER	2- 52,1	2- 97,1	2- 56,1							
1 TIM	2- 44,2	2- 41,2								
1 TIMING	2- 41,1	2- 83,2	2- 44,1	2- 91,1	2- 85,1					
1 TIP	2- 9,1	2- 7,1								
1 TR	2- 7,6	2- 11,8	2- 9,7	2- 24,4	2- 22,8	2- 20,9	2- 18,6	2- 17,5	2- 16,5	2- 14,7
	2- 12,6	2- 56,4	2- 43,4	2- 26,7	2- 28,7	2- 31,7	2- 30,8	2- 33,6	2- 41,4	2- 40,4
	2- 36,7	2- 35,6	2- 98,1	2- 70,9	2- 68,7	2- 67,3	2- 53,2	2- 55,5	2-100,5	2- 44,6
	2- 97,3	2- 59,2	2- 72,8	2- 73,9	2- 97,3	2- 61,7	2- 60,3	2- 63,5	2- 64,10	2- 94,5
	2- 93,6	2- 91,2	2- 89,2	2- 80,9	2- 79,4	2- 81,7	2- 85,1	2- 83,4	2- 75,7	2- 74,8
	2- 77,6	2- 87,2	2- 66,3							
1 TRULS	2- 40,3	2- 47,1	2- 48,1	2- 57,1	2- 55,1	2- 66,1	2- 59,5	2- 98,1	2- 96,1	2- 90,2
	2- 45,1	2-101,1	2- 99,1							
1 TRUCH	2- 22,1	2- 31,3	2- 40,4	2- 36,4	2- 35,4	2- 33,3	2- 91,1	2- 81,1	2- 80,2	2- 67,1
	2- 63,2	2- 61,1								
1 TRIM	2- 89,1									
1 UNDERCUTTING	2- 48,1	2- 47,1								
1 UNDERSIDE	2- 48,1									
1 VEHICLE	2- 33,1	2- 49,1	2- 48,1	2- 47,3	2- 39,1	2- 30,1	2- 97,1	2- 95,4	2- 90,4	2- 89,2
	2- 81,2	2- 56,1	2- 55,2	2- 54,3	2- 52,2	2- 51,5				
1 VERTICAL	2- 24,3	2- 18,1	2- 77,1	2- 75,1	2- 68,1	2- 36,3	2- 81,1			
1 VISE	2- 50,1	2-101,1	2- 95,1							
1 VLIUS	2- 52,1									
1 VOLTAGE	2- 68,1	2- 75,1	2- 70,1	2- 77,1	2-102,1	2- 81,1				

MHS WORD LIST BY PAGE

DATE 82039 1311 PAGE

10

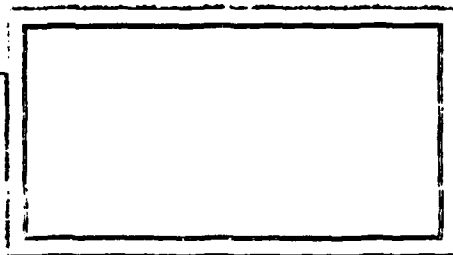
4	USE	2- 83,1	2- 94,1	2- 90,1	2- 89,1	2- 95,1	2- 96,1	2-100,1	2- 98,1		
		2- 91,1	2- 59,1	2- 96,1	2- 59,1	2- 48,1	2- 40,1	2- 31,2	2- 30,2	2- 28,2	2- 26,2
4	USED	2- 14,2	2- 98,1								
		2- 17,2	2- 18,2	2- 22,1	2- 20,2	2- 31,1	2- 30,2	2- 28,1	2- 25,3	2- 24,2	2- 26,2
4	USING	2-102,3	2- 36,2	2- 35,2	2- 57,1	2- 44,1	2- 74,1	2- 70,1	2- 33,1		
		2- 17,1	2- 16,1	2- 41,1	2- 39,1	2- 37,1	2- 29,1	2- 18,1	2- 98,1	2- 59,2	2- 54,1
		2- 53,1	2- 31,1	2- 30,1	2- 89,1	2- 90,1	2- 96,1	2- 47,1			
4	UTILITY	2- 57,2	2- 59,1								
4	WFFICH	2- 55,1									
5	ARLF	2- 25,1	2- 18,1	2- 17,1	2- 16,1	2- 85,1	2- 59,1	2- 54,1	2- 53,1	2- 50,1	2- 47,1
		2- 32,1	2- 37,1	2- 88,1	2- 96,1	2- 90,1					
5	ADDITION	2- 43,1	2- 41,1								
5	AFTER	2- 49,1	2- 18,1								
5	APPENDIX	2- 94,1	2- 93,1	2- 91,1	2- 81,1	2- 80,1	2- 77,1	2- 75,1	2- 74,1	2- 73,1	2- 72,1
		2- 70,1	2- 68,1	2- 61,1	2- 60,1	2- 53,1	2- 43,1	2- 41,1	2- 36,1	2- 35,1	2- 33,1
		2- 31,1	2- 30,1	2- 28,1	2- 26,1	2- 22,1	2- 20,1	2- 18,1	2- 14,1	2- 12,1	2- 11,1
		2- 9,1	2- 7,1								
5	APPLICABLE	2- 79,2	2- 77,3	2- 75,3	2- 74,4	2- 73,3	2- 72,3	2- 70,4	2- 68,3	2- 61,2	2- 56,1
		2- 53,2	2- 52,1	2- 51,1	2- 39,2	2- 36,4	2- 35,3	2- 33,3	2- 31,3	2- 30,3	2- 28,3
		2- 26,3	2- 25,5	2- 24,2	2- 22,2	2- 20,2	2- 18,5	2- 17,2	2- 14,2	2- 12,4	2- 11,1
		2- 9,2	2- 7,2	2-102,2	2- 97,1	2- 95,1	2- 94,2	2- 91,2	2- 81,3	2- 80,4	
5	APPLICABLETH	2- 35,1									
5	APPROXIMATELY	2- 64,2									
5	ARMORED	2- 89,2									
5	ASSAULT	2- 89,2									
5	BEING	2- 17,2	2- 24,2	2- 32,1	2- 20,2	2- 18,2	2- 84,2	2- 35,2	2- 33,1	2- 31,1	2- 30,2
		2- 28,1	2- 26,2	2- 25,3	2-102,4	2- 90,1	2- 74,1	2- 70,1			
5	BLACK	2- 49,1									
5	BOTH	2- 57,1	2- 37,1								
5	CONNERS	2- 41,1									
5	OMOR	2- 54,2									
5	DOWN	2- 49,3	2- 61,1								
5	ENTIRE	2-102,2									
5	EXTENSIVE	2-100,1									
5	FILL	2- 64,1									
5	FOLLOWING	2- 98,1	2- 96,1	2- 90,1	2- 89,1	2- 81,1	2- 77,1	2- 75,1	2- 12,1	2- 17,1	2- 16,1
		2- 39,1	2- 37,1	2- 35,2	2- 18,1	2- 68,1	2- 61,1	2- 59,1	2- 54,1	2- 53,1	2- 51,1
		2- 50,1	2- 47,1								
5	FRESHLY	2- 89,1									
5	HANDSAW	2- 89,1									
5	INSTALL	2- 92,1	2- 7,1	2- 46,1	2- 40,1	2- 39,4	2- 14,1	2- 59,1	2- 58,1	2- 55,1	2- 51,1
		2- 47,1									
5	INSTALLATION	2-101,1									
5	KEEP	2-102,1									
5	LAY	2- 11,1	2- 9,1	2- 7,1	2- 30,1	2- 28,1	2- 35,1	2- 33,1	2- 31,1	2- 24,1	2- 20,1
		2- 18,1	2- 14,1	2- 12,1	2- 36,1	2- 54,2	2- 53,1	2- 37,1	2- 72,1	2- 70,1	2- 68,1
		2- 80,1	2- 74,1	2- 73,1							
5	LAYING	2- 99,1	2- 94,1	2- 91,1	2- 81,1	2- 61,1	2- 77,1	2- 75,1			
5	MAKE	2- 41,1									
5	MINUTES	2-102,1	2- 50,1	2- 37,2	2-100,1	2- 99,1	2- 96,1	2- 95,1	2- 79,1	2- 70,1	2- 60,1

HEADQUARTERS

DATA CONTROL NUMBER _____
JOB NO / PROJECT NO

UNITED STATES ARMY TRAINING AND DOCTRINE COMMAND

FORT MONROE, VIRGINIA 23651



PREPARED BY: OPERATIONS DIV, DPFO

COPY _____ OF _____ COPIES

ATOP ^{FORM} Oct 29 109-1 Feb 50 edition may be used until exhausted.

END

DATE
FILMED

7 82

DTIC