

AD-A116 640

ARMY TRAINING DEVELOPMENTS INST FORT MONROE VA
WORD CRITICALITY ANALYSIS. MOS: 27E. SKILL LEVELS 1 & 2.(U)
SEP 81 A A LONGO
MOS-27E

F/G 5/9

UNCLASSIFIED

NL

1 of 1
4 6166-0

END
NOV
7 1981
014

DTIC

AD A116640

(4)

HEADQUARTERS

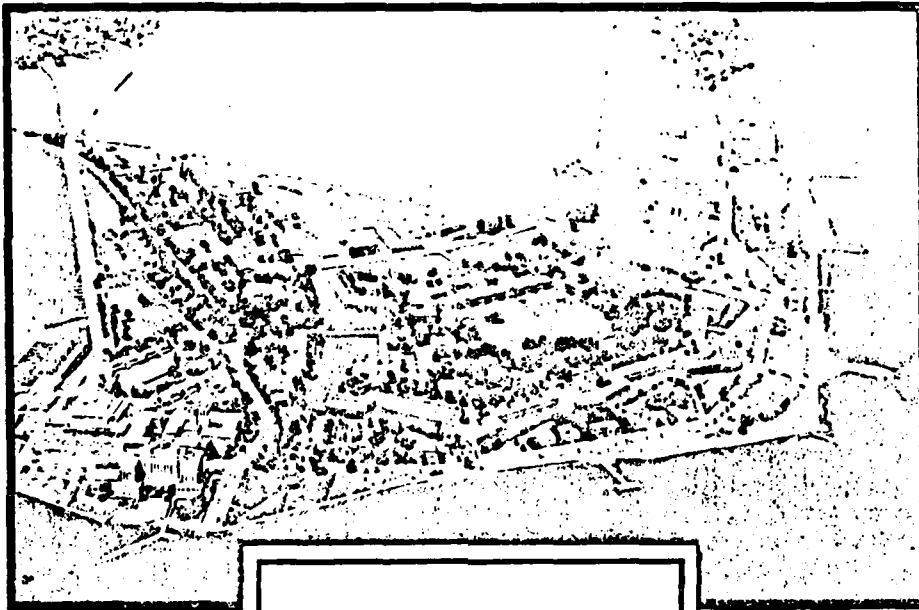
DATA CONTROL NUMBER

JOB NO / PROJECT NO

UNITED STATES ARMY TRAINING AND DOCTRINE COMMAND

FORT MONROE, VIRGINIA 23651

Copy available to DTIC does not
permit fully legible reproduction



DTIC

Word Criticality Analysis

MOS: 27E

Skill Level 1

PREPARED BY: OPERATIONS DIV, DPFO

COPY ____ OF ____ COPIES

FORM
ATDP Oct 68 109-1

Feb 80 edition may be used
until exhausted.

DISCLAIMER NOTICE

**THIS DOCUMENT IS BEST QUALITY
PRACTICABLE. THE COPY FURNISHED
TO DTIC CONTAINED A SIGNIFICANT
NUMBER OF PAGES WHICH DO NOT
REPRODUCE LEGIBLY.**

UNCLASSIFIED

SECURITY CLASSIFICATION OF THIS PAGE (When Date Entered)

REPORT DOCUMENTATION PAGE		READ INSTRUCTIONS BEFORE COMPLETING FORM
1. REPORT NUMBER 27E	2. GOVT ACCESSION NO. AD-2116 040	3. RECIPIENT'S CATALOG NUMBER
4. TITLE (and Subtitle) Word Criticality Analysis MOS: 27E Skill Level: 192		5. TYPE OF REPORT & PERIOD COVERED Final
		6. PERFORMING ORG. REPORT NUMBER
7. AUTHOR(s) Dr. Alexander A. Longo		8. CONTRACT OR GRANT NUMBER(s)
9. PERFORMING ORGANIZATION NAME AND ADDRESS Training Developments Institute ATTN: ATTG-DOR Fort Monroe, VA 23651		10. PROGRAM ELEMENT, PROJECT, TASK AREA & WORK UNIT NUMBERS
11. CONTROLLING OFFICE NAME AND ADDRESS Training Developments Institute ATTN: ATTG-DOR Fort Monroe, VA 23651		12. REPORT DATE Sep 1981
		13. NUMBER OF PAGES 11
14. MONITORING AGENCY NAME & ADDRESS (if different from Controlling Office)		15. SECURITY CLASS. (of this report) Unclassified
		15a. DECLASSIFICATION/DOWNGRADING SCHEDULE
16. DISTRIBUTION STATEMENT (of this Report) Approved for Public Release; Distribution is unlimited.		
17. DISTRIBUTION STATEMENT (of the abstract entered in Block 20, if different from Report)		
18. SUPPLEMENTARY NOTES		
19. KEY WORDS (Continue on reverse side if necessary and identify by block number) MOS Vocabulary Readability Comprehension of text Curriculum Development		
20. ABSTRACT (Continue on reverse side if necessary and identify by block number) This report contains terms selected as having some degree of criticality in the training/performance of tasks contained in the respective MOS Soldier's Manual (SM). These critical words were selected by subject matter/job experts knowledgeable in their MOS. The vocabulary set used as the basis for critical word analysis was the Word-Frequency Report based on the SM for the same MOS.		

DD FORM 1 JAN 73 1473 EDITION OF 1 NOV 65 IS OBSOLETE

UNCLASSIFIED
SECURITY CLASSIFICATION OF THIS PAGE (When Date Entered)

Contents and General Information

1. The Word Criticality Analysis (WCA) reports were reproduced exactly as generated via computer printout. The prime users of this document were fully cognizant of its contents and required no special instructions for interpretation. However, for the sake of other readers, the following brief description of contents is provided.

2. The WCA reports for most MOS are divided as follows:

- o Skill Level I
- o Skill Level II

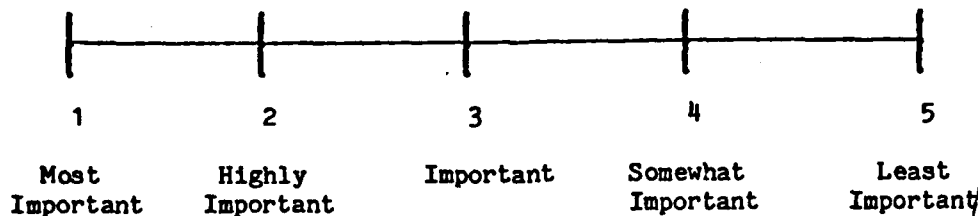
However, due to the way some Soldier Manuals are constructed, the WCA for some MOS have both Skill Levels merged into one report. Each Skill Level is subdivided into two sections.

a. Introductory - these MOS critical words, identified by the code "TRN", represent terms unmatched on the master tape for that MOS. (Reasons for this include: words volunteered as critical; keypunching errors; updating master tapes per changes in SM, etc). NOTE: The number to the left of each critical word is its criticality index defined below.

b. Main - these MOS critical words are ranked alphabetically within a criticality index (defined below) that also is ranked from 1-5. The numbers to the right of the critical words represent the SM page on which that term appeared and its frequency of appearance. Example "222,4" is interpreted as: "4 times on page 222". NOTE: Due to computer programming/sort difficulties, the accuracy of correct page referencing is only approximately 80% for most reports. Improvements in programming and coding increased this accuracy to 95% in those reports completed last (i.e., dated Jan-Mar 82).

3. Word Criticality Index:

The following 5 point rating scale was used by a team of up to 3 subject matter experts from Army MOS proponent schools to rate each word selected as having some importance for training/performing a critical task:



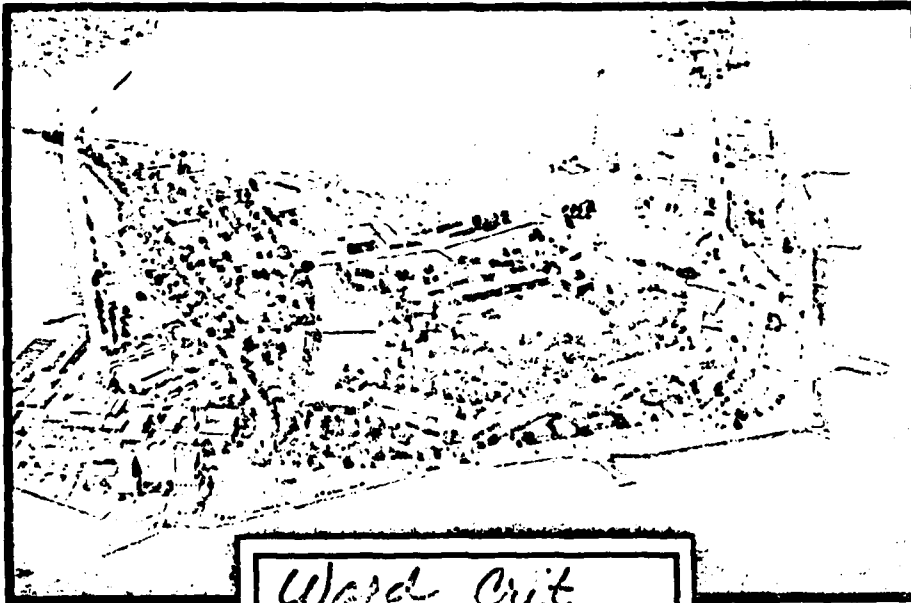
Accession For	<input checked="" type="checkbox"/>
NTIS GRA&I	<input type="checkbox"/>
DTIC TAB	<input type="checkbox"/>
Unannounced	<input type="checkbox"/>
Justification	<input type="checkbox"/>
By	
Distribution/	
Availability Codes	
Dist	Special
A R 3	

X SL 1/2 to ACE

HEADQUARTERS
UNITED STATES ARMY TRAINING AND DOCTRINE COMMAND
FORT MONROE, VIRGINIA 23651

DATA CONTROL NUMBER _____
JOB NO / PROJECT NO

WCA



NOV 25 1980

ORAD

Word Crit
Nov 27E
Skill Level 1

KP = (A)
P = (C)

COPY _____ OF _____ COPIES

PREPARED BY: OPERATIONS DIV, DPFO

FORM
ATOP Oct 80 109-1 Feb 80 edition may be used
until exhausted.

MDS WORD LIST BY PAGE

DATE 8C324 1847 PAGE 3

2	CHARGER	27,6	19,2						
2	CHARGE	4,1	27,3						
2	COMPLETE	27,1							
2	COMPLETELY	27,2							
2	COMPOUND	14,3							
2	COMPTON	27,31	1,1						
2	CONTAINER	27,1							
2	CONNECT	1,1	692,1	232,1					
2	OPACON	27,1							
2	EXCESS	14,1							
2	EXERCISE	27,1							
2	EXTRA	14,1							
2	FAULTY	243,2							
2	FIG	611,1	7,1						
2	FIXTURE	27,2							
2	GENERATOR	692,3	611,4	243,1	142,15	27,4			
2	GUIDANCE	27,2							
2	INSTALL	3,1	142,4	27,4	14,4	5,1			
2	INSTALLED	692,2	27,1						
2	INSTRUCTIONS	014,1	27,1						
2	INSTRUCTOR	27,4							
2	ISSUE	611,1							
2	ITEM	143,1	142,3						
2	ITEMS	611,1							
2	KN	692,3	243,1	142,15	27,2				
2	LAUNCH	19,1	142,1	27,6					
2	LEVEL	27,1							
2	LOCUS	27,1							
2	MOUNTING	27,2	19,1						
2	NITROGEN	14,2							
2	N2	14,3							
2	OPERATE	27,1							
2	OPERATE	27,4	24,1	1,1					
2	OPERATED	27,1							
2	OPERATING	014,1	27,1						
2	OPERATION	1,1							
2	OPERATIONAL	232,1							
2	OPERATORS	27,1	1,1						
2	ORDER	142,20	27,25	19,22	14,1	692,2	243,2	143,1	
2	ORDER	27,1	14,1						
2	PERFORMANCE	692,3	611,2	493,2	243,22	232,1	142,28	27,4	14,1
2	PRE-OPERATIONAL	232,1							
2	PRESSURE	141,1	14,2						
2	PRESSURIZE	14,1							
2	REMOVE	1,1	142,3	14,1					
2	REPAIR	142,3	27,31						
2	REPAIRED	143,1	142,3	19,20					
2	REPAIRER	27,2							
2	REPAIRING	27,1							
2	REPLACE	27,25	24,2	142,16	692,2				

MOS WORD LIST BY PAGE

DATE 80324 1847 PAGE 6

692>3 27>2 249>1 142>15
27>1

3 V
3 WINE

HEADQUARTERS
UNITED STATES ARMY TRAINING AND DOCTRINE COMMAND
FORT MONROE, VIRGINIA 23651

DATA CONTROL NUMBER _____
JOB NO / PROJECT NO



Word Criticality Analysis

MOS: 27E

Skill Level 2

PREPARED BY: OPERATIONS DIV, DPFO

ATOP ^{FORM} Oct 80 109-1 Feb 80 edition may be used until exhausted.

COPY _____ OF _____ COPIES

HEADQUARTERS

DATA CONTROL NUMBER
JOB NO / PROJECT NO

UNITED STATES ARMY TRAINING AND DOCTRINE COMMAND

FORT MONROE, VIRGINIA 23651

WCA

NOV 25 1980

ORAD



Word Crit
Nos. 27E
Skill Level 2

K6 = (C)
P = (C)

COPY _____ OF _____ COPIES

PREPARED BY: OPERATIONS DIV. DPFO

ATDP FORM 109 7-80 Replaces ATDG 110, Jul 75, which is obsolete

MDS WORD LIST BY PAGE

DATE 08324 1055 PAGE 3

2	FIG	15,1	11,1	493,1	243,1				
2	FIATING	692,1							
2	FIATURE	692,1							
2	GENERATOR	493,2	142,2						
2	HALT	0,1							
2	INSTRUCTIONS	27,1							
2	ITEMS	27,1	1,3						
2	KI	498,2	142,2						
2	LAUNCH	27,2							
2	LAUNCHER	692,3	142,1						
2	LEVEL	27,1							
2	LOCATION	1,1							
2	OFFSET	692,1							
2	OPERATE	27,1							
2	OPERATING	27,1							
2	OPERATION	493,1							
2	OPERATIONAL	493,2	27,6						
2	OPERATIONS	27,2							
2	DAILY	1,1							
2	ORDER	27,3	19,3	142,2					
2	OVERAGE	9,1							
2	OVERAGES	493,1	9,1						
2	PARA	692,3	602,1	493,12	142,5	18,1	0,1	2,1	
2	PARAGRAPH	493,1							
2	PERFORM	27,4							
2	PERFORMANCE	1,4	142,4	27,1	692,4	602,1	493,10	243,2	
2	PERIODIC	27,1							
2	PRIORITY	1,1							
2	RECEIPT	27,2	9,1	493,2					
2	RECEIPTS	1,1							
2	REMOVE	493,1							
2	REPAIR	27,1	1,3						
2	REPAIRED	19,2	1,1	27,3					
2	REPAIRER	27,2							
2	REPAIRERS	1,1							
2	REPLACE	27,3	142,2						
2	REPORT	1,1	19,3						
2	REPORTING	1,1							
2	REQUEST	27,1	18,1	9,1	1,1				
2	REQUIRED	493,2							
2	RETURN	19,4							
2	ROUTE	1,1							
2	SECURITY	493,1							
2	STANDARD	1,2	692,2	493,5	142,3	27,1			
2	STANDING	27,1							
2	SUPPLY	1,1							
2	SUPPORT	493,2	27,12	1,1					
2	SUPPORTED	1,1	27,1						
2	SOME	27,1	493,1						
2	SYSTEM	1,1	493,2	142,3	27,6	19,1	692,3		

MOS WORD LIST BY PAGE

DATE 8C324 1859 PAGE 4

2	TASK	27,11692,1	493,1					
2	TASKS	27,1						
2	TROUBLESHOOT	27,5 692,1	662,1					
2	TROUBLESHOOTING	27,2 1,1						
2	TURBIDITY	6,1 9,1						
2	UP-TO-DATE	493,1						
2	UPDATE	27,1 49,1						
3	ALL	692,3 662,1	493,7	1,3	243,2	142,2		
3	AREA	692,1 27,6						
3	ASSIGNED	493,1 27,1						
3	CHARGES	493,1						
3	CHAP	142,1 493,1	243,2					
3	DECIDE	1,1						
3	DISPATCH	1,2						
3	EFFECTS	27,2						
3	EQUIPMENT	493,9 142,2	27,5	1,6				
3	FILE	19,3 9,1	27,3					
3	FOLDER	9,1						
3	FORM	692,1 493,4	142,1	27,5	9,2	6,1	1,4	
3	FORMS	19,2 692,3	662,1	493,4	243,2	142,3	27,1	
3	KIT	692,3 493,2	142,2	27,1	1,1			
3	LABEL	27,1 493,1						
3	LESSONS	493,1 142,3	59,1	692,4	662,1			
3	LIST	493,1 1,1						
3	LISTED	1,1						
3	LISTING	493,1						
3	LOAD	1,1						
3	LOADED	493,1						
3	LOADING	493,2 1,2						
3	LOCAL	27,2 1,1						
3	MAINTENANCE	6,1 692,1	27,15	19,1				
3	MATCH	142,1						
3	MATING	493,1						
3	NOTE	493,2						
3	NOTIFY	1,1						
3	PICK	493,1						
3	PLAIN	9,1						
3	PLAN	1,1 493,1						
3	PLANS	493,1						
3	POSSIBLE	27,1						
3	POWER	493,1						
3	PRESCRIBED	1,1						
3	RECORD	692,1						
3	RULES	692,2 662,1	493,5	1,2	243,2	142,3		
3	S	27,1						
3	SELECT	1,1						
3	SET	1,1 692,3	493,11	142,4	27,8			
3	SITE	493,1						
3	SUPERVISOR	142,2 27,1	19,4	1,2				
2	TEAM	1,2 493,1	27,13	19,3				

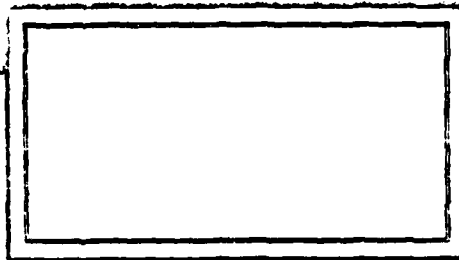
MOS WORD LIST BY PAGE

DATE 8C324 1855 PAGE 5

3	UNIT	1,4	493,2	27,2				
3	VEHICLE	493,2	1,2					
3	VEHICLES	493,2						
3	WEAPON	27,2						
4	CASE	473,1						
4	CHIEF	27,5	14,3					
4	CLIPBOARD	493,1						
4	COLUMNS	9,1						
4	CONCAT	493,2	27,1					
4	DURING	27,1	493,1					
4	DUTY	27,1						
4	ENOUGH	1,1						
4	ENTRIES	493,1						
4	FILL	0,1	243,2	142,4	692,3	662,1	493,5	
4	FILLED-OUT	1,1	19,1					
4	FIND	1,1	243,2	27,1	493,1			
4	FINDINGS	19,2						
4	GARRISON	27,1						
4	INITIALS	9,1						
4	LAK	493,1						
4	LEG	1,1						
4	MEMBER	27,5						
4	MEMBERS	1,1						
4	MISSILE	142,1						
4	POINT	1,1						
4	POSITION	27,1						
4	PREFARE	6,1	493,1	142,1	27,1			
4	RETENTION	9,2						
4	SAFEKEEP	27,1						
4	SAFETY	1,2	243,2	142,1	692,2	662,1	493,5	
4	SECURE	493,1						
4	SKILL	27,1						
4	STATED	142,1						
4	STUDY	1,1						
4	WEATHER	27,1	493,1					
4	WITHIN	27,1						
5	ADDRESSED	5,1						
5	BLACK	493,1						
5	CHECK	672,1	493,2	142,1	27,8			
5	CHECKOUT	692,2	19,1	6,1				
5	CHECKS	27,1	493,1	142,1				
5	FRUP	493,1	27,1	1,1				
5	H	692,1						
5	V	142,2						

HEADQUARTERS
UNITED STATES ARMY TRAINING AND DOCTRINE COMMAND
FORT MONROE, VIRGINIA 23651

DATA CONTROL NUMBER _____
JOB NO. / PROJECT NO.



PREPARED BY: OPERATIONS DIV. DPFO

ATDP FORM
Oet 80 109-1 Feb 80 edition may be used
until exhausted.

COPY _____ OF _____ COPIES

END

DATE
FILMED

7 82

DTIC