

AD-A116 668

MILITARY MANPOWER STATISTICS, MARCH, FY-82. (U)
WASHINGTON HEADQUARTERS SERVICE (DOD) DIR FOR INFO
OP & RPTS. MAR 82. DIOR/MO3-82/06

V/I

UNCLASSIFIED

F/G 5/9

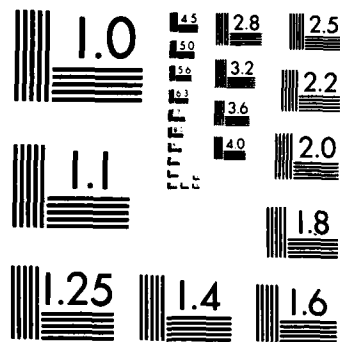
N/L

1 OF 1
AD-A116 668

END
FILMED
11 04 85

1 OF 1

AD-A116 668



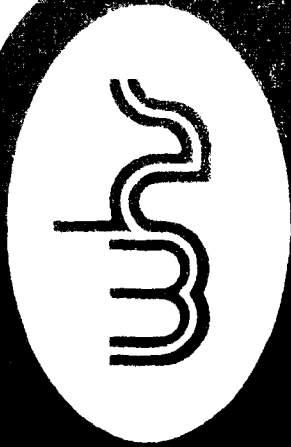
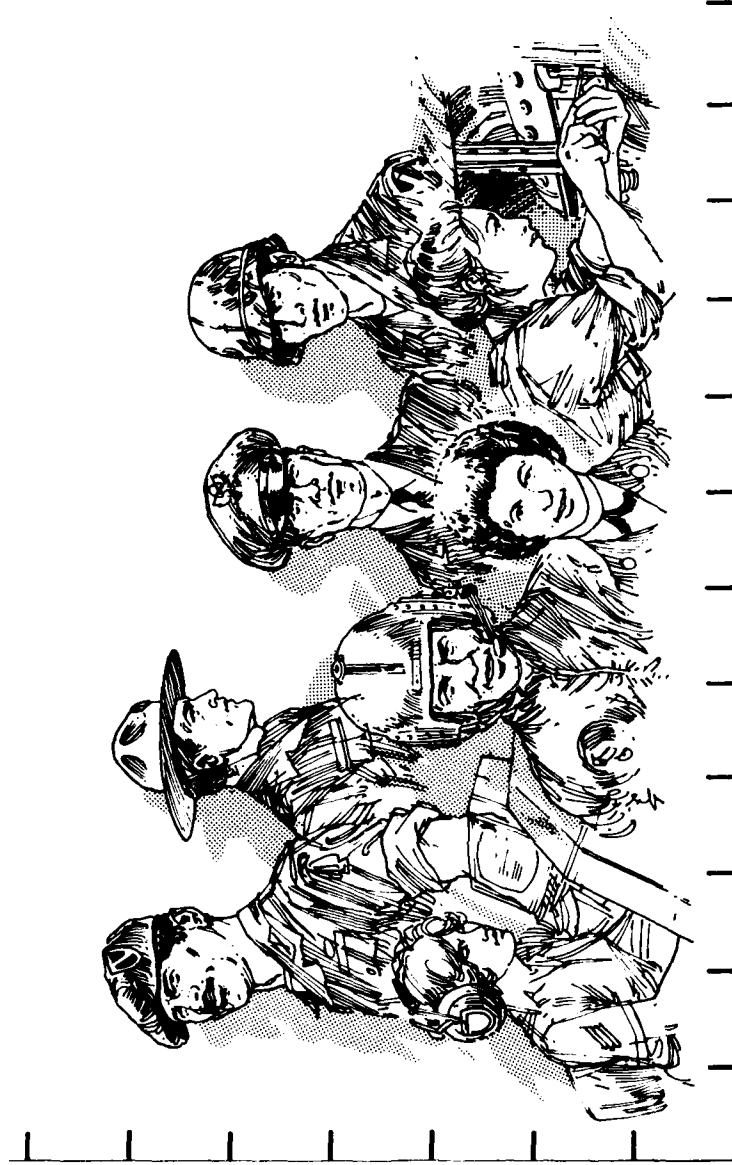
MICROCOPY RESOLUTION TEST CHART
NATIONAL BUREAU OF STANDARDS 1963 A

THIS REPORT IS UNCLASSIFIED AND
ITS DISTRIBUTION IS UNLIMITED



Department of Defense MILITARY MANPOWER STATISTICS

MARCH 1982



DIRECTORATE FOR INFORMATION
OPERATIONS AND REPORTS (DIOR)
THE PENTAGON, WASHINGTON, D.C.



Department of Defense
MILITARY MANPOWER STATISTICS

OSD

MAN-POWER STATISTICS



WHS

DIRECTORATE FOR INFORMATION
 OPERATIONS AND REPORTS (DIOR)
 THE PENTAGON, WASHINGTON, D.C.

F O R E W O R D

MILITARY MANPOWER STATISTICS (MMS) is a monthly publication prepared by the Washington Headquarters Services, Directorate for Information Operations and Reports (WHS/DIOR) of the Office of the Secretary of Defense.

The MMS report presents audited statistical data pertaining to military personnel on active duty and personnel in military reserve components, for the current fiscal year on a monthly basis. The March, June, September, and December issues contain quarterly summaries of certain military manpower data as annotated in the Table of Contents. Although these tables are revised quarterly, they are published without changes in two subsequent monthly editions of this publication. The publication is generated from a computerized data base developed and maintained by the Manpower Management Information Division of WHS/DIOR.

The report is approved for public release at cost: distribution unlimited. Requests for additional copies and changes in distribution should be addressed to the Director, Information Operations and Reports, WHS, Room 1C535, The Pentagon, Washington, D.C. 20301.

T A B L E O F C O N T E N T S

<u>Section 1</u>	<u>Active Duty Military Manpower Statistics</u>	<u>Page</u>
Table P10	Summary of Military Personnel	3
Table P11	Department of Defense Manpower Comparison	4
Table P22.1	Total Active Duty Military Personnel by Service	5
Table P23.1	Active Duty Officer Personnel and Percent of Total Military Personnel by Service	6
Table P23.3	Total Active Duty Military Personnel by Type	7
Table P23.4	Army Active Duty Military Personnel by Type	8
Table P23.5	Navy Active Duty Military Personnel by Type	9
Table P23.6	Marine Corps Active Duty Military Personnel by Type	10
Table P23.7	Air Force Active Duty Military Personnel by Type	11
Table P23.41	Army Active Duty Military Personnel	12
Table P23.51	Navy Active Duty Military Personnel	13
Table P23.61	Marine Corps Active Duty Military Personnel	14
Table P23.71	Air Force Active Duty Military Personnel	15
Table P25.6	Women Military Personnel on Active Duty Officers and Enlisted by Service	16

<u>Section 1</u>	<u>Active Duty Military Manpower Statistics</u>	<u>Page</u>
Table P26.0	Military Personnel on Active Duty by Grade in Which Serving	17
*Table P26.02	Female Military Personnel on Active Duty by Grade in Which Serving	18
Table P26.04	Military Personnel on Active Duty by Grade in Which Serving - Regular	19
Table P26.05	Military Personnel on Active Duty by Grade in Which Serving - Reserve	20
Table P27.1	Summary of Enlisted Personnel Procurement	21
Table P27.21	Army Enlisted Personnel Procurement	22
Table P27.22	Navy Enlisted Personnel Procurement	23
Table P27.23	Marine Corps Enlisted Personnel Procurement	24
Table P27.24	Air Force Enlisted Personnel Procurement	25
*Table P29.20-29.34	Reenlistment Rates by Service	26
*Table P309A	Active Duty Military Personnel Strength by Regional Area and by Country	29

* Prepared quarterly, this table is updated in March, June, September and December.

<u>Section 2</u>	<u>Reserve Military Manpower Statistics</u>	<u>Page</u>
Table R11.0	Reserve Component Strength Summary	35
Table R12.0	Reserve Strength - Officer and Enlisted Not on Active Duty	36
Table R13.0	Ready Reserve and Active Duty Strength Compared to Statutory Limitation	37
Table R14.0	Reserve Component Personnel by Reserve Category Not on Active Duty - Total	38
Table R14.0	Reserve Component Personnel by Reserve Category Not on Active Duty - Officers	39
Table R14.0	Reserve Component Personnel by Reserve Category Not on Active Duty - Enlisted	40
Table R21.0	Reserve Personnel on Active Duty by Component	41
Table R22.0	Reserve Strength on Active Duty	42
Table R23.0	Reserve Personnel by Component and Category Not on Active Duty	43
Table R24.0	Reserve Strength Not on Active Duty	44
Table R26.5	Selected Reserve Strength	45
Glossary of Terms		46

Section 1

ACTIVE DUTY MILITARY MANPOWER STATISTICS

TABLE P10

DEPARTMENT OF DEFENSE
SUMMARY OF MILITARY PERSONNEL

	TOTAL DOD	ARMY	NAVY	MARINE CORPS	AIR FORCE
1. ACTIVE DUTY MILITARY AS OF 31 MAR 1982					
OFFICER	286,720	101,699	65,805	18,502	100,714
ENLISTED	1,807,388	685,948	473,361	173,455	474,624
ACADEMY CADETS	12,920	4,218	4,537	-	4,165
TOTAL ACTIVE DUTY MILITARY	2,107,028	791,865	543,703	191,957	579,503
2. GUARD AND RESERVES AS OF 31 MAR 1982					
NATIONAL GUARD IN PAID STATUS	513,080	413,674	-	-	99,406
	501,689	402,465	-	-	99,224
RESERVES	1,715,705	906,521	323,857	103,924	381,403
• IN PAID STATUS	431,631	243,093	88,524	37,186	63,028
TOTAL GUARD AND RESERVES	2,228,785	1,320,195	323,857	103,924	961,618
IN PAID STATUS	933,520	645,558	88,524	37,186	324,504
3. OFFICER TRAINING IN COLLEGES A/ AS OF OCTOBER 1981					
	105,725	72,463	8,511	-	24,751

A/ EXCLUDES 186,113 IN JUNIOR DIVISION, MILITARY SCHOOLS AND NATIONAL DEFENSE CADETS CORPS.

NOTE: The Army Officer total contains an overstatement of 103 persons. The Army and Total DOD figures should be adjusted accordingly on all applicable tables.

TABLE P11
 DOD MANPOWER COMPARISON
 (MILITARY & CIVIL FUNCTIONS)

DATE	TOTAL DOD	ARMY			AIR FORCE			NAVY AND MARINE CORPS			TOTAL	A/ OSD/ JCS
		MILI-TARY	CIVIL-IAN	B/ CIVIL-IAN	MILI-TARY	CIVIL-IAN	B/ CIVIL-IAN	NAVY MILI-TARY	MARINE CORPS MILI-TARY	B/ CIVIL-IAN		
31 OCT 81	3,088,111	782,809	356,078	1,138,887	573,198	237,124	810,322	542,550	191,522	325,056	1,059,128	79,774
30 NOV 81	3,102,801	784,749	359,213	1,143,962	574,250	238,815	813,065	546,709	191,410	327,401	1,065,520	80,254
31 DEC 81	3,102,095	783,621	360,292	1,143,913	574,459	239,794	814,253	544,713	190,239	328,438	1,063,390	80,539
31 JAN 82	3,112,182	787,383	360,279	1,147,662	576,787	239,720	816,507	548,166	191,480	327,918	1,067,564	80,449
28 FEB 82	3,121,743	790,785	361,468	1,152,253	578,845	241,267	820,112	547,035	192,529	328,766	1,068,330	81,048
31 MAR 82	3,125,126	791,865	365,301	1,157,166	579,503	241,977	821,480	543,703	191,957	329,375	1,065,035	81,445

A/ CIVILIAN PERSONNEL MILITARY PERSONNEL ASSIGNED TO OSD, OJCS AND OTHER DEFENSE ACTIVITIES ARE REPORTED BY THEIR RESPECTIVE SERVICES.

B/ TOTAL PAID EMPLOYEES - AS REPORTED OFFICIALLY TO THE OFFICE OF PERSONNEL MANAGEMENT; EXCLUDES OVERSEAS SUPPORT PERSONNEL (INDIRECT HIRE).

TABLE P22.1

DEPARTMENT OF DEFENSE
TOTAL ACTIVE DUTY MILITARY PERSONNEL BY SERVICE

DATE	TOTAL DOD	ARMY	NAVY	MARINE CORPS	AIR FORCE
OCT 31, 1981	2,090,079	782,809	542,550	191,522	573,198
NOV 30, 1981	2,097,118	784,749	546,709	191,410	574,250
DEC 31, 1981	2,093,032	783,621	544,713	190,239	574,459
JAN 31, 1982	2,103,816	787,383	548,166	191,480	576,787
FEB 28, 1982	2,109,194	790,785	547,035	192,529	578,845
MAR 31, 1982	2,107,028	791,865	543,703	191,957	579,503

TABLE P23.1
 DEPARTMENT OF DEFENSE
 ACTIVE DUTY OFFICER PERSONNEL AND PERCENT OF TOTAL MILITARY PERSONNEL, BY SERVICE

DATE	TOTAL DOD		ARMY		NAVY		MARINE CORPS		AIR FORCE	
	NUMBER	%	NUMBER	%	NUMBER	%	NUMBER	%	NUMBER	%
OCT 31, 1981	285,600	13.7	101,734	13.0	65,566	12.1	18,302	9.6	99,898	17.4
NOV 30, 1981	285,006	13.6	101,212	12.9	65,629	12.0	18,153	9.5	100,012	17.4
DEC 31, 1981	285,431	13.6	101,408	12.9	65,586	12.0	18,254	9.6	100,183	17.4
JAN 31, 1982	285,903	13.6	101,626	12.9	65,538	12.0	18,240	9.5	100,499	17.4
FEB 28, 1982	286,261	13.6	101,619	12.9	65,606	12.0	18,451	9.6	100,585	17.4
MAR 31, 1982	286,720	13.6	101,699	12.8	65,805	12.1	18,502	9.6	100,714	17.4

TABLE P23.3

DEPARTMENT OF DEFENSE
TOTAL ACTIVE DUTY MILITARY PERSONNEL BY TYPE

DATE	OFFICERS	ENLISTED	A/ OFFICER CANDIDATES	TOTAL
OCT 31, 1981	285,600	1,791,174	13,305	2,090,079
NOV 30, 1981	285,006	1,798,856	13,256	2,097,118
DEC 31, 1981	285,431	1,794,406	13,195	2,093,032
JAN 31, 1982	285,903	1,804,849	13,064	2,103,816
FEB 28, 1982	286,261	1,809,926	13,007	2,109,194
MAR 31, 1982	286,720	1,807,388	12,920	2,107,028

A/ CONSISTS OF THE FOLLOWING:
FOR ARMY - CADETS, U. S. MILITARY ACADEMY
FOR NAVY - MIDSHPMEN, U. S. NAVAL ACADEMY
FOR AIR FORCE - CADETS U. S. AIR FORCE ACADEMY

TABLE P23.4

DEPARTMENT OF DEFENSE
ARMY ACTIVE DUTY MILITARY PERSONNEL BY TYPE

DATE	OFFICERS	ENLISTED	U.S. MILITARY ACADEMY	CADETS	TOTAL
OCT 31, 1981	101,734	676,712	4,363	782,809	
NOV 30, 1981	101,212	679,202	4,335	784,749	
DEC 31, 1981	101,408	677,900	4,313	783,621	
JAN 31, 1982	101,626	681,482	4,275	787,383	
FEB 28, 1982	101,619	684,890	4,276	790,785	
MAR 31, 1982	101,699	685,948	4,218	791,865	

TABLE P23.5
 DEPARTMENT OF DEFENSE
 NAVY ACTIVE DUTY MILITARY PERSONNEL BY TYPE

DATE	OFFICERS	ENLISTED	MIDSHIPMEN U.S. NAVAL ACADEMY	TOTAL
OCT 31, 1981	65,666	472,328	4,556	542,550
NOV 30, 1981	65,629	476,529	4,551	546,709
DEC 31, 1981	65,586	474,576	4,551	544,713
JAN 31, 1982	65,538	478,078	4,550	548,166
FEB 28, 1982	65,606	476,880	4,549	547,035
MAR 31, 1982	65,605	473,361	4,537	543,703

TABLE P23.8

DEPARTMENT OF DEFENSE
MARINE CORPS ACTIVE DUTY MILITARY PERSONNEL BY TYPE

DATE	OFFICERS	ENLISTED	TOTAL
OCT 31, 1981	18,302	173,220	191,522
NOV 30, 1981	18,153	173,257	191,410
DEC 31, 1981	18,254	171,985	190,239
JAN 31, 1982	18,240	173,240	191,480
FEB 28, 1982	18,451	174,078	192,529
MAR 31, 1982	18,502	173,455	191,957

TABLE P23.7
 DEPARTMENT OF DEFENSE
 AIR FORCE ACTIVE DUTY MILITARY PERSONNEL BY TYPE

DATE	OFFICERS	ENLISTED	CADETS U.S.A.F. ACADEMY	TOTAL
OCT 31, 1981	99,898	468,914	4,366	573,198
NOV 30, 1981	100,012	469,868	4,370	574,250
DEC 31, 1981	100,183	469,945	4,331	574,459
JAN 31, 1982	100,499	472,049	4,239	576,787
FEB 28, 1982	100,585	474,078	4,182	578,845
MAR 31, 1982	100,714	474,624	4,165	579,503

TABLE P23.41

DEPARTMENT OF DEFENSE
ARMY ACTIVE DUTY MILITARY PERSONNEL

REPORTED STRENGTH, AND ADJUSTMENTS TO REPORTED STRENGTH TO DERIVE "DIRECT PROGRAM STRENGTH" CHARGEABLE TO APPROPRIATION "MILITARY PERSONNEL, ARMY"

DATE	REPORTED STRENGTH	A/ EXCLUDABLES	OFF	ENL	OFF	ENL	TOTAL	OFFICER	ENLISTED	CADETS USMA
31 OCT 1981	782,809	378	378	3	368	134	781,926	100,988	676,575	4,363
30 NOV 1981	784,749	378	378	3	355	131	783,882	100,479	679,068	4,335
31 DEC 1981	783,621	374	374	2	349	130	782,766	100,685	677,768	4,313
31 JAN 1982	787,383	371	371	4	352	133	786,523	100,903	681,345	4,275
28 FEB 1982	790,785	377	377	4	352	140	789,902	100,880	684,746	4,276
31 MAR 1982	791,865	378	378	3	357	141	790,986	100,964	685,804	4,218

A/ ACTIVE DUTY PERSONNEL PAID BY AN APPROPRIATION OTHER THAN MILITARY PERSONNEL, ARMY, AND EXCLUDED FROM THE END STRENGTH OF THE ARMY. COMPRISED OF CIVIL WORKS PERSONNEL, AND USAR AND ARNG PERSONNEL ON STATUTORY TOURS.

TABLE P23.51

DEPARTMENT OF DEFENSE
NAVY ACTIVE DUTY MILITARY PERSONNEL

REPORTED STRENGTH, AND ADJUSTMENTS TO REPORTED STRENGTH TO DERIVE "DIRECT PROGRAM STRENGTH" CHARGEABLE TO APPROPRIATION "MILITARY PERSONNEL, NAVY"

DATE	REPORTED STRENGTH	PAID FROM A/ RES PERS APPN	OFF	ENL	OFFICER	ENLISTED	TOTAL	OFFICER	ENLISTED	OFFICER CANDIDATES
					(LESS) REIMBURSABLES					
31 OCT 1981	542,550	221	-	-	403	1,215	540,711	65,042	471,113	4,556
30 NOV 1981	546,709	222	-	-	404	1,198	544,885	65,003	475,331	4,551
31 DEC 1981	544,713	221	63	-	405	1,212	542,812	64,960	473,301	4,551
31 JAN 1982	548,166	217	-	-	414	1,232	546,303	64,907	476,846	4,550
28 FEB 1982	547,035	217	-	-	412	1,241	545,165	64,977	475,639	4,549
31 MAR 1982	543,703	217	-	-	414	1,241	541,831	65,174	472,120	4,537

A/ NAVAL RESERVE PERSONNEL ON ACTIVE DUTY UNDER PROVISIONS OF SEC. 265, TITLE 10, U.S. CODE PAID FROM THE NAVAL RESERVE PERSONNEL APPROPRIATION.

TABLE P23.61

DEPARTMENT OF DEFENSE
MARINE CORPS ACTIVE DUTY MILITARY PERSONNEL

REPORTED STRENGTH, AND ADJUSTMENTS TO REPORTED STRENGTH TO DERIVE "DIRECT PROGRAM STRENGTH" CHARGEABLE TO APPROPRIATION "MILITARY PERSONNEL, MARINE CORPS"

DATE	REPORTED STRENGTH	PAID FROM A/ RES PERS APPN	(LESS)		TOTAL	DIRECT PROGRAM STRENGTH CHARGEABLE TO APPN. "MILITARY PERSONNEL, MARINE CORPS"		OFFICER CANDIDATES
			OFFICER	ENLISTED		OFFICER	ENLISTED	
31 OCT 1981	191,522	105	24	1	191,392	18,173	173,219	-
30 NOV 1981	191,410	105	26	31	191,248	18,022	173,226	-
31 DEC 1981	190,239	104	26	30	190,079	18,124	171,955	-
31 JAN 1982	191,480	140	26	28	191,286	18,074	173,212	-
28 FEB 1982	192,529	129	28	25	192,347	18,294	174,053	-
31 MAR 1982	191,957	92	28	25	191,612	18,382	173,430	-

A/ MARINE CORPS RESERVE PERSONNEL ON ACTIVE DUTY UNDER PROVISIONS OF SEC. 265, TITLE 10, U.S. CODE PAID FROM THE MARINE CORPS RESERVE PERSONNEL APPROPRIATION.

TABLE P23.71

DEPARTMENT OF DEFENSE
AIR FORCE ACTIVE DUTY MILITARY PERSONNEL¹

REPORTED STRENGTH, AND ADJUSTMENTS TO REPORTED STRENGTH TO DERIVE "DIRECT PROGRAM STRENGTH" CHARGEABLE TO APPROPRIATION "MILITARY PERSONNEL, AIR FORCE"

DATE	REPORTED STRENGTH	ANG/AFR	OFF	ENL	(LESS) REIMBURSABLES	DIRECT PROGRAM STRENGTH CHARGEABLE TO APPROP. "MILITARY PERSONNEL, AIR FORCE"	TOTAL	OFFICER	ENLISTED	USAF & AVCADS
31 OCT 1981	573,198		290	-						
30 NOV 1981	574,250		297	-						
31 DEC 1981	574,459		296	-						
31 JAN 1982	576,787		293	-						
28 FEB 1982	578,845		293	-						
31 MAR 1982	579,503		294	-						

TABLE P25.6

DEPARTMENT OF DEFENSE
WOMEN MILITARY PERSONNEL ON ACTIVE DUTY, OFFICERS, AND ENLISTED BY SERVICE

DATE	TOTAL DOD		ARMY		NAVY		MARINE CORPS		AIR FORCE		
	TOTAL	OFF	TOTAL	OFF	TOTAL	OFF	TOTAL	OFF	TOTAL	OFF	
31 OCT 81	185,899	23,573	162,326	8,364	40,354	5,409	34,945	7,208	63,859	9,305	54,554
30 NOV 81	187,757	23,802	163,955	8,415	41,163	5,406	35,757	7,303	64,229	9,461	54,768
31 DEC 81	187,803	23,909	163,894	8,496	41,180	5,435	35,745	7,253	64,163	9,461	54,702
31 JAN 82	190,075	24,142	165,933	8,559	42,070	5,457	36,613	7,479	64,420	9,586	54,834
28 FEB 82	191,097	24,210	166,887	8,595	42,289	5,460	36,829	7,580	64,621	9,615	55,006
31 MAR 82	191,340	24,311	167,029	8,633	42,340	5,500	36,840	7,564	64,706	9,638	55,068

TABLE P26.0

DEPARTMENT OF DEFENSE
MILITARY PERSONNEL ON ACTIVE DUTY BY GRADE IN WHICH SERVING A/

MARCH 31, 1982

RANK/GRADE	ARMY	NAVY	MARINE CORPS	AIR FORCE
GENERAL OF ARMY - FLEET ADMIRAL	-	-	-	-
GENERAL	33	9	2	13
LT GENERAL	114	30	7	34
MAJ GENERAL	370	79	23	121
BRIG GENERAL	534	134	33	169
COLONEL	14,337	3,779	581	5,291
LIEUTENANT COL	32,852	7,724	1,521	12,633
MAJOR	49,793	12,495	2,999	18,187
CAPTAIN	90,514	18,127	4,829	35,106
1ST LIEUTENANT	42,572	9,909	4,182	15,072
2ND LIEUTENANT	37,036	10,643	2,837	14,088
CHIEF WARRANT OFFICER W-4	2,192	512	151	-
CHIEF WARRANT OFFICER W-3	5,303	986	154	-
CHIEF WARRANT OFFICER W-2	7,042	1,378	687	-
WARRANT OFFICER W-1	4,028	-	496	-
TOTAL OFFICERS	286,720	65,805	18,502	100,714
E-9	13,338	3,466	1,236	4,748
E-8	35,057	8,626	3,402	9,512
E-7	120,694	30,821	8,730	34,495
E-6	213,070	67,395	12,909	53,509
E-5	338,864	87,274	27,461	102,626
E-4	419,593	88,117	31,711	106,769
E-3	354,706	99,914	42,817	106,069
E-2	169,120	53,042	28,270	32,120
E-1	142,746	34,706	16,919	24,776
TOTAL ENLISTED	1,807,388	473,361	173,455	474,624
CADETS & MIDSHIPMEN	12,920	4,537	-	4,165
GRAND TOTAL	2,107,028	543,703	191,957	579,503

A/ INCLUDES REIMBURSABLE ACTIVE DUTY
MILITARY PAY STRENGTHS

TABLE P26.02

DEPARTMENT OF DEFENSE
FEMALE MILITARY PERSONNEL ON ACTIVE DUTY BY GRADE IN WHICH SERVING A/

MARCH 31, 1982

RANK/GRADE	ARMY	NAVY	MARINE CORPS	AIR FORCE
GENERAL OF ARMY - FLEET ADMIRAL	-	-	-	-
GENERAL	-	-	-	-
LT GENERAL	-	-	-	-
MAJ GENERAL	1	-	-	1
BRIG GENERAL	6	2	-	2
COLONEL	254	86	3	76
LIEUTENANT COL	939	270	26	349
MAJOR	2,466	808	57	716
CAPTAIN	9,278	2,042	136	3,483
1ST LIEUTENANT	6,262	1,214	149	2,864
2ND LIEUTENANT	4,921	1,064	142	2,147
CHIEF WARRANT OFFICER W-4	7	3	3	-
CHIEF WARRANT OFFICER W-3	16	4	5	-
CHIEF WARRANT OFFICER W-2	96	7	14	-
WARRANT OFFICER W-1	65	-	5	-
TOTAL OFFICERS	24,311	5,500	540	9,638
E-9	47	3	6	13
E-8	177	34	24	29
E-7	1,210	228	115	176
E-6	6,470	2,034	284	963
E-5	29,942	6,074	1,446	10,315
E-4	51,805	8,279	1,795	19,191
E-3	43,713	11,380	1,674	17,013
E-2	16,756	5,075	1,518	3,554
E-1	15,719	3,440	702	3,315
TOTAL ENLISTED	165,839	36,547	7,564	54,569
CADETS & MIDSHIPMEN	1,190	293	-	499
GRAND TOTAL	191,340	42,340	8,104	64,706

A/ INCLUDES REIMBURSABLE ACTIVE DUTY
MILITARY PAY STRENGTHS

TABLE P26.04

DEPARTMENT OF DEFENSE
MILITARY PERSONNEL ON ACTIVE DUTY BY GRADE IN WHICH SERVING

REGULAR A/

MARCH 31, 1982

RANK/GRADE	TOTAL DOD	ARMY	NAVY	MARINE CORPS	AIR FORCE
GENERAL OF ARMY - FLEET ADMIRAL	-	-	-	-	-
GENERAL - ADMIRAL	33	9	9	2	13
LT GENERAL - VICE ADMIRAL	112	41	30	7	34
MAJ GENERAL - REAR ADMIRAL (U)	367	145	79	22	121
BRIG GENERAL - REAR ADMIRAL (L)	531	196	133	33	169
COLONEL - CAPTAIN	13,795	4,500	3,628	567	5,100
LIEUTENANT COL - COMMANDER	29,879	9,704	6,998	1,492	11,685
MAJOR - LT COMMANDER	41,969	12,693	10,806	2,911	15,559
CAPTAIN - LIEUTENANT	53,293	13,011	13,119	4,233	22,930
1ST LIEUTENANT - LIEUTENANT (JG)	14,707	4,971	5,262	2,197	2,277
2ND LIEUTENANT - ENSIGN	9,759	3,013	4,123	881	1,742
CHIEF WARRANT OFFICER W-4	1,758	1,108	501	149	-
CHIEF WARRANT OFFICER W-3	3,256	2,123	981	152	-
CHIEF WARRANT OFFICER W-2	2,828	803	1,339	686	-
WARRANT OFFICER W-1	518	23	-	495	-
TOTAL OFFICERS	172,805	52,340	47,008	13,827	59,630
E-9	13,197	3,886	3,341	1,226	4,744
E-8	34,679	13,512	8,286	3,379	9,502
E-7	119,492	46,833	29,504	8,679	34,476
E-6	209,602	79,253	64,030	12,846	59,473
E-5	333,277	121,497	82,133	27,079	102,568
E-4	412,893	192,953	81,571	31,675	106,694
E-3	339,655	105,863	85,027	42,754	106,011
E-2	157,871	55,644	42,047	28,194	31,986
E-1	134,377	66,132	26,644	16,830	24,771
TOTAL ENLISTED	1,755,043	685,573	422,583	172,662	474,225
REGULAR TOTAL	1,927,848	737,913	469,591	186,489	533,855

A/ REGULAR PLUS RETIRED REGULAR
OFFICERS ON ACTIVE DUTY.

TABLE P26.05
DEPARTMENT OF DEFENSE
MILITARY PERSONNEL ON ACTIVE DUTY BY GRADE IN WHICH SERVING

RESERVE A/
MARCH 31, 1982

RANK/GRADE	ARMY	NAVY	MARINE CORPS	AIR FORCE
GENERAL OF ARMY - FLEET ADMIRAL	-	-	-	-
GENERAL - ADMIRAL	-	-	-	-
LT GENERAL - VICE ADMIRAL	2	-	-	-
MAJ GENERAL - REAR ADMIRAL (U)	2	-	1	-
BRIG GENERAL - REAR ADMIRAL (L)	2	1	-	-
COLONEL - CAPTAIN	186	151	14	191
LIEUTENANT COL - COMMANDER	1,270	726	29	948
MAJOR - LT COMMANDER	3,419	1,689	88	2,628
CAPTAIN - LIEUTENANT	19,441	5,008	596	12,176
1ST LIEUTENANT - LIEUTENANT (JG)	8,438	4,647	1,985	12,795
2ND LIEUTENANT - ENSIGN	6,455	6,520	1,956	12,346
CHIEF WARRANT OFFICER W-4	421	11	2	-
CHIEF WARRANT OFFICER W-3	2,040	5	2	-
CHIEF WARRANT OFFICER W-2	4,174	39	1	-
WARRANT OFFICER W-1	3,509	-	1	-
TOTAL OFFICERS	113,915	18,797	4,675	41,084
E-9	141	125	10	4
E-8	378	340	23	10
E-7	1,402	1,317	51	19
E-6	3,468	3,365	63	36
E-5	5,587	5,141	382	58
E-4	6,700	6,546	36	75
E-3	15,051	14,887	63	58
E-2	11,249	10,995	76	134
E-1	8,369	8,062	89	5
TOTAL ENLISTED	52,345	50,778	793	399
RESERVE TOTAL	166,260	69,575	5,468	41,483

A/ INCLUDES RESERVE, NATIONAL GUARD, AUS, AND AFUS OFFICERS ON ACTIVE DUTY.

TABLE P27.1

DEPARTMENT OF DEFENSE
SUMMARY OF ENLISTED PERSONNEL PROCUREMENT
FISCAL YEAR 1982

	OCT 1981	NOV 1981	DEC 1981	JAN 1982	FEB 1982	MAR 1982
TOTAL DEPARTMENT OF DEFENSE	54,440	49,482	38,831	55,500	47,681	43,014
INDUCTIONS	-	-	-	-	-	-
FIRST ENLISTMENTS	29,715	25,019	17,723	26,823	24,974	19,644
IMMEDIATE REENLISTMENTS	18,876	17,829	18,214	22,879	17,846	20,088
OTHER REENLISTMENTS	3,880	3,393	2,265	3,552	3,130	2,173
RESERVES TO ACTIVE DUTY A/	1,969	2,241	629	2,246	1,731	1,109
ARMY	21,293	15,909	17,755	20,034	20,662	19,545
INDUCTIONS	-	-	-	-	-	-
FIRST ENLISTMENTS	12,147	8,812	8,680	10,000	11,333	9,378
IMMEDIATE REENLISTMENTS	7,460	5,977	7,695	8,846	7,898	8,992
OTHER REENLISTMENTS	1,630	1,068	1,347	1,084	1,412	1,109
RESERVES TO ACTIVE DUTY	56	52	33	100	119	66
NAVY	12,583	17,493	5,909	14,463	10,874	7,899
INDUCTIONS	-	-	-	-	-	-
FIRST ENLISTMENTS	6,339	8,450	1,753	6,802	4,249	2,588
IMMEDIATE REENLISTMENTS	3,551	5,364	3,291	4,127	3,979	3,981
OTHER REENLISTMENTS	905	1,564	315	1,480	1,011	367
RESERVES TO ACTIVE DUTY	1,788	2,115	550	2,054	1,635	963
MARINE CORPS	6,824	4,840	3,590	5,997	5,365	4,336
INDUCTIONS	-	-	-	-	-	-
FIRST ENLISTMENTS	4,417	3,052	1,761	3,523	3,296	2,296
IMMEDIATE REENLISTMENTS	1,977	1,401	1,543	1,977	1,689	1,667
OTHER REENLISTMENTS	318	321	247	412	315	302
RESERVES TO ACTIVE DUTY	112	66	39	85	65	71
AIR FORCE	13,740	11,240	11,577	15,006	10,780	11,234
INDUCTIONS	-	-	-	-	-	-
FIRST ENLISTMENTS	6,812	5,705	5,529	6,494	6,096	5,382
IMMEDIATE REENLISTMENTS	5,888	5,087	5,685	7,929	4,280	5,448
OTHER REENLISTMENTS	1,027	440	356	576	392	395
RESERVES TO ACTIVE DUTY	13	8	7	7	12	9

A/ INCLUDES NATIONAL GUARD.

TABLE P27.21

DEPARTMENT OF DEFENSE
ARMY ENLISTED PERSONNEL PROCUREMENT
FISCAL YEAR 1982

	OCT 1981	NOV 1981	DEC 1981	JAN 1982	FEB 1982	MAR 1982
TOTAL	21,293	15,909	17,755	20,034	20,662	19,545
REGULAR ENL. AND REENL. - TOTAL	21,237	15,857	17,722	19,934	20,643	19,479
FIRST ENLISTMENTS	12,147	8,812	8,680	10,004	11,333	9,378
REENLISTMENTS - TOTAL	9,090	7,045	9,042	9,930	9,310	10,101
IMMEDIATE REENLISTMENTS	7,460	5,977	7,695	8,846	7,898	8,992
FORMER REGULAR	7,418	5,959	7,672	8,833	7,894	8,988
FORMER RESERVE & N.G.	42	16	23	13	4	4
FORMER INDUCTEE	-	-	-	-	-	-
REENL. OTHER THAN IMMEDIATE	1,630	1,068	1,347	1,084	1,412	1,109
WITHIN 2-90 DAYS AFTER SEPARATION	182	114	118	91	107	61
FORMER REGULAR	39	37	29	16	14	9
FORMER RESERVE & N.G.	137	77	79	65	86	49
FORMER INDUCTEE	6	-	10	10	7	3
FORMER OFFICER	-	-	-	-	-	-
OVER 90 DAYS AFTER SEPARATION	1,448	954	1,229	993	1,305	1,048
INDUCTIONS	-	-	-	-	-	-
RESERVES AND N.G. CALLS	56	52	33	100	19	66

TABLE P27.22

DEPARTMENT OF DEFENSE
NAVY ENLISTED PERSONNEL PROCUREMENT
FISCAL YEAR 1982

	OCT 1981	NOV 1981	DEC 1981	JAN 1982	FEB 1982	MAR 1982
TOTAL	12,583	17,493	5,909	14,463	10,874	7,899
REGULAR ENL. AND REENL. - TOTAL	10,795	15,378	5,359	12,409	9,239	6,936
FIRST ENLISTMENTS	6,339	8,450	1,753	6,802	4,249	2,588
REENLISTMENTS - TOTAL	4,456	6,928	3,606	5,607	4,990	4,348
IMMEDIATE REENLISTMENTS	3,551	5,364	3,291	4,127	3,979	3,981
FORMER REGULAR	3,446	5,121	3,128	3,859	3,687	3,695
FORMER RESERVE	105	243	163	268	292	286
REENL. OTHER THAN IMMEDIATE	905	1,564	315	1,480	1,011	367
WITHIN 2-90 DAYS AFTER SEPARATION	284	463	109	359	199	64
FORMER REGULAR	284	463	109	359	199	64
FORMER RESERVE	-	-	-	-	-	-
OVER 90 DAYS AFTER SEPARATION	621	1,101	206	1,121	812	303
INDUCTIONS	-	-	-	-	-	-
RESERVES TO ACTIVE DUTY	1,788	2,115	550	2,054	1,635	963
FIRST ENLISTMENTS	163	270	52	202	133	105
REENLISTMENTS	150	169	93	124	138	150
REPORTED TO ACTIVE DUTY	1,475	1,676	405	1,728	1,364	708

TABLE P27.24

DEPARTMENT OF DEFENSE
AIR FORCE ENLISTED PERSONNEL PROCUREMENT
FISCAL YEAR 1982

	OCT 1981	NOV 1981	DEC 1981	JAN 1982	FEB 1982	MAR 1982
TOTAL	13,740	11,240	11,577	15,006	10,780	11,234
REGULAR ENL. AND REENL. - TOTAL	13,727	11,232	11,570	14,999	10,768	11,225
FIRST ENLISTMENTS	6,812	5,705	5,529	6,494	6,096	5,382
REENLISTMENTS - TOTAL	6,915	5,527	6,041	8,505	4,672	5,843
IMMEDIATE REENLISTMENTS	5,888	5,087	5,685	7,929	4,280	5,448
FORMER REGULAR FORMER RESERVE & N.G.	5,882 6	5,083 4	5,679 6	7,924 5	4,279 1	5,448 -
REENL. OTHER THAN IMMEDIATE	1,027	440	356	576	392	395
WITHIN 2-90 DAYS AFTER SEPARATION	-	-	-	-	-	-
FORMER REGULAR FORMER RESERVE & N.G.	-	-	-	-	-	-
OVER 90 DAYS AFTER SEPARATION A/	1,027	440	356	576	392	395
INDUCTIONS	-	-	-	-	-	-
RESERVES & N.G. TO ACTIVE DUTY	13	8	7	7	12	9

A/ INCLUDES ENLISTMENTS OF FORMER COMMISSIONED AND WARRANT OFFICERS.

TABLE P29.20-29.34

DEPARTMENT OF DEFENSE
REENLISTMENT RATES BY SERVICE

	A/ "UNADJUSTED" REENLISTMENT RATES FOR FIRST-TERM REGULARS					B/ "ADJUSTED" REENLISTMENT RATES FOR FIRST-TERM REGULARS				
	TOTAL DOD	ARMY	NAVY	MARINE CORPS	AIR FORCE	TOTAL DOD	ARMY	NAVY	MARINE CORPS	AIR FORCE
FY 1979										
ELIGIBLES	171,034	62,909	45,204	21,029	41,892	159,988	59,604	44,308	20,925	35,151
REENLISTMENTS	64,001	27,027	16,949	4,107	15,918	54,369	23,714	17,080	4,010	9,565
REENLISTMENT RATE	37.4%	43.0%	37.5%	19.5%	38.0%	34.0%	39.8%	38.5%	19.2%	27.2%
FY 1980										
ELIGIBLES	165,525	50,288	53,670	19,364	42,203	161,232	52,231	51,976	19,575	37,450
REENLISTMENTS	64,762	25,434	19,721	4,493	15,114	61,610	27,370	19,138	4,672	10,430
REENLISTMENT RATE	39.1%	50.6%	36.7%	23.2%	35.8%	38.2%	52.4%	36.8%	23.9%	27.9%
FY 1981										
ELIGIBLES	161,600	38,762	55,107	23,875	43,856	158,676	43,013	53,583	24,120	37,960
REENLISTMENTS	69,435	21,312	22,968	6,340	18,815	67,709	25,563	22,521	6,630	12,995
REENLISTMENT RATE	43.0%	55.0%	41.7%	26.6%	42.9%	42.7%	59.4%	42.0%	27.5%	34.2%
FY 1982 (6 MOS)										
ELIGIBLES	73,168	17,086	22,911	11,255	21,916	61,369	14,638	21,262	9,639	15,830
REENLISTMENTS	42,905	12,277	12,792	4,974	12,862	31,391	9,829	11,36	3,379	6,822
REENLISTMENT RATE	58.6%	71.9%	55.8%	44.2%	58.7%	51.2%	67.1%	53.4%	35.1%	43.1%

TABLE P-29. 20-29. 34

DEPARTMENT OF DEFENSE
REENLISTMENT RATES BY SERVICE

	A/ "UNADJUSTED" REENLISTMENT RATES FOR TOTAL REGULARS				B/ "ADJUSTED" REENLISTMENT RATES FOR TOTAL REGULARS				REENLISTMENT RATE ARMY INDUCTEES			
	TOTAL DOD	ARMY	NAVY	MARINE CORPS	AIR FORCE	TOTAL DOD	ARMY	NAVY	MARINE CORPS	AIR FORCE	UN- ADJUSTED	AD- JUSTED
FY 1979												
ELIGIBLES	343,032	144,849	74,818	37,016	86,349	322,679	134,924	73,598	36,668	77,489	-	-
REENLISTMENTS	181,338	81,443	35,367	12,396	52,130	162,994	71,505	35,488	12,047	43,954	-	-
REENLISTMENT RATE	52.9%	56.2%	47.3%	33.5%	60.4%	50.5%	53.0%	48.2%	32.9%	56.7%	-	-
FY 1980												
ELIGIBLES	343,425	133,010	86,251	35,032	89,132	334,952	136,721	83,581	34,928	79,722	-	-
REENLISTMENTS	190,260	82,793	41,556	12,388	53,523	183,494	86,494	40,500	12,237	44,263	-	-
REENLISTMENT RATE	55.4%	62.2%	48.2%	35.4%	60.0%	54.8%	63.3%	48.5%	35.0%	55.5%	-	-
FY 1981												
ELIGIBLES	334,048	116,743	94,303	29,453	93,549	331,979	131,957	90,462	29,070	80,490	-	-
REENLISTMENTS	201,527	77,892	51,519	10,517	61,599	200,987	93,105	49,039	10,182	48,661	-	-
REENLISTMENT RATE	60.3%	66.7%	54.6%	35.7%	65.8%	60.5%	70.6%	54.2%	35.0%	60.5%	-	-
FY 1982 (6 MOS)												
ELIGIBLES	167,813	59,242	44,488	18,400	45,683	144,345	55,774	39,644	15,779	33,148	-	-
REENLISTMENTS	122,308	47,055	30,402	10,534	34,317	99,262	43,587	25,892	7,930	21,853	-	-
REENLISTMENT RATE	72.9%	79.4%	68.3%	57.3%	75.1%	68.8%	78.1%	65.3%	50.3%	65.9%	-	-

TABLE P29.20-29.34

DEPARTMENT OF DEFENSE
REENLISTMENT RATES BY SERVICE

	A/ "UNADJUSTED" REENLISTMENT RATES FOR CAREER REGULARS				B/ "ADJUSTED" REENLISTMENT RATES FOR CAREER REGULARS					
	TOTAL DOD	ARMY	NAVY	MARINE CORPS	AIR FORCE	TOTAL DOD	ARMY	NAVY	MARINE CORPS	AIR FORCE
FY 1979										
ELIGIBLES	171,998	81,940	29,614	15,987	44,457	162,691	75,320	29,290	15,743	42,338
REENLISTMENTS	117,337	54,416	18,418	8,291	36,212	108,625	47,791	18,408	8,037	34,389
REENLISTMENT RATE	68.2%	66.4%	62.2%	51.9%	81.5%	66.8%	63.5%	62.8%	51.1%	81.2%
FY 1980										
ELIGIBLES	177,900	82,722	32,591	15,668	46,929	173,720	84,490	31,605	15,353	42,272
REENLISTMENTS	125,498	57,359	21,835	7,895	38,409	121,884	59,124	21,362	7,565	33,833
REENLISTMENT RATE	70.5%	69.3%	67.0%	50.4%	81.8%	70.2%	70.0%	67.6%	49.3%	80.0%
FY 1981										
ELIGIBLES	172,448	77,981	39,196	5,578	49,693	173,303	88,944	36,879	4,950	42,530
REENLISTMENTS	132,092	56,580	28,551	4,177	42,784	133,278	67,542	26,518	3,552	35,666
REENLISTMENT RATE	76.6%	72.6%	72.8%	74.9%	86.1%	76.9%	75.9%	71.9%	71.8%	83.9%
FY 1982 (6 MOS)										
ELIGIBLES	94,645	42,156	21,577	7,145	23,767	82,976	41,136	18,382	6,140	17,318
REENLISTMENTS	79,403	34,778	17,610	5,560	21,455	67,871	33,758	14,531	4,551	15,031
REENLISTMENT RATE	83.9%	82.5%	81.6%	77.6%	90.3%	81.8%	82.1%	79.1%	74.1%	86.8%

A/ "UNADJUSTED REENLISTMENT RATE" - THE RATIO OF TOTAL REENLISTMENTS OCCURRING IN A GIVEN PERIOD TO TOTAL SEPARATIONS ELIGIBLE TO REENLIST IN THE SAME PERIOD, EXPRESSED AS A PERCENTAGE.

B/ "ADJUSTED REENLISTMENT RATE" - THE "UNADJUSTED" RATE ADJUSTED TO EXCLUDE THE EFFECTS OF: (1) EARLY SEPARATIONS FOR IMMEDIATE REENLISTMENTS AND (2) OTHER EARLY DISCHARGES OF ELIGIBLES UNDER EARLY RELEASE PROGRAMS.

TABLE P309A

DEPARTMENT OF DEFENSE
ACTIVE DUTY MILITARY PERSONNEL STRENGTHS BY REGIONAL AREA AND BY COUNTRY

MARCH 31, 1982

REGIONAL AREA/COUNTRY	TOTAL	ARMY	AIR FORCE	NAVY	MARINE CORPS
TOTAL WORLDWIDE	2,106,925	791,762	579,503	643,703	191,957
ASHORE	1,881,276	791,762	579,503	323,960	186,051
AFLOAT	225,649	-	-	219,743	5,906
U.S. TERRITORY AND SPECIAL LOCATIONS	1,604,323	531,804	461,524	453,833	157,162
CONTINENTAL U.S.	1,291,609	478,304	422,698	250,365	140,242
ALASKA	21,094	8,395	10,939	1,565	195
HAWAII	44,553	17,856	6,252	11,637	8,808
AMERICAN SAMOA	1	1	-	-	-
GUAM	8,878	29	3,943	4,517	389
JOHNSTON ATOLL	115	107	8	-	-
MIDWAY ISLANDS	70	-	-	70	-
PUERTO RICO	3,445	380	45	2,844	176
TRUST TERRITORY OF THE PACIFIC ISLANDS	36	32	4	-	-
U.S. MISCELLANEOUS PACIFIC ISLANDS	2	2	-	-	-
VIRGIN ISLANDS OF THE U.S.	11	9	-	2	-
WAKE ISLAND	6	-	6	-	-
TRANSIENTS	72,689	26,689	17,629	21,019	7,352
AFLOAT	161,814	-	-	161,814	-
TOTAL FOREIGN COUNTRIES	502,602	259,958	117,979	89,870	34,795
ASHORE	436,767	259,958	117,979	31,941	28,889
AFLOAT	63,835	-	-	57,929	5,906
(1) WESTERN & SOUTHERN EUROPE	337,073	219,829	60,972	33,127	3,145
AUSTRIA	30	5	1	24	24
BELGIUM*	2,145	1,337	657	119	32
CYPRUS	12	2	1	-	9
DENMARK*	46	4	17	15	10
FINLAND	20	5	2	2	11
FRANCE*	91	37	16	4	34
GERMANY (FED REPUBLIC & WEST BERLIN)*	249,171	211,340	37,408	300	121
GREECE*	3,424	508	2,499	401	16
GREENLAND*	324	6	318	-	-
ICELAND*	2,955	2	1,119	1,712	122
IRELAND	9	1	2	-	6
ITALY*	13,071	4,282	4,366	4,160	263
LUXEMBOURG*	6	-	-	-	6
MALTA	1	1	-	-	-
NETHERLANDS*	2,509	743	1,740	17	9
NORWAY*	202	36	119	29	18
PORTUGAL*	1,468	64	1,070	323	11
SPAIN	8,700	30	5,151	3,332	167

TABLE P309A

DEPARTMENT OF DEFENSE
ACTIVE DUTY MILITARY PERSONNEL STRENGTHS BY REGIONAL AREA AND BY COUNTRY

MARCH 31, 1982

REGIONAL AREA/COUNTRY	TOTAL	ARMY	AIR FORCE	NAVY	MARINE CORPS
SWEDEN	15	2	6	-	7
SWITZERLAND	32	6	4	1	21
TURKEY*	5,230	1,212	3,915	84	19
UNITED KINGDOM*	25,527	206	22,561	2,399	361
AFLOAT	22,085	-	-	20,227	1,858
*EUROPEAN NATO	(306,169)	(219,777)	(75,805)	(9,565)	(1,022)
(2) EAST ASIA & PACIFIC	128,130	31,106	34,282	35,045	27,697
AUSTRALIA	646	9	265	363	9
BURMA	9	3	2	-	4
CHINA	14	4	1	2	7
FIJI	1	1	-	-	-
HONG KONG	39	10	4	13	12
INDONESIA	48	12	11	14	11
JAPAN (INCLUDING OKINAWA)	47,845	2,502	14,727	7,149	23,470
MALAYSIA	18	9	2	1	6
NEW ZEALAND	67	2	10	49	6
PHILIPPINES	15,636	35	8,688	4,935	1,978
REPUBLIC OF KOREA	40,055	28,467	10,547	326	715
SINGAPORE	31	6	2	16	7
THAILAND	91	46	23	9	13
AFLOAT	23,627	-	-	22,168	1,459
(3) AFRICA, NEAR EAST & SOUTH ASIA	15,997	859	468	14,288	382
AFGHANISTAN	6	-	-	-	6
ALGERIA	2	2	-	-	-
BAHRAIN	66	2	-	64	-
BANGLADESH	6	2	-	-	-
BRITISH INDIAN OCEAN TERRITORY (INCLUDES DIEGO GARCIA)	1,697	-	2	1,695	-
CAMEROON	8	2	-	-	6
CONGO	5	-	-	-	5
EGYPT	477	319	105	28	25
ETHIOPIA	6	-	-	-	6
GABON	6	-	-	-	6
GHANA	10	2	-	-	8
INDIA	40	4	4	2	30
ISRAEL	96	44	24	8	20
IVORY COAST	9	3	-	-	6
JORDAN	23	12	5	-	6
KENYA	34	15	4	1	14
KUWAIT	27	18	1	1	7

TABLE P309A

DEPARTMENT OF DEFENSE
ACTIVE DUTY MILITARY PERSONNEL STRENGTHS BY REGIONAL AREA AND BY COUNTRY

MARCH 31, 1982

REGIONAL AREA/COUNTRY	TOTAL	ARMY	AIR FORCE	NAVY	MARINE CORPS
LEBANON	14	3	-	1	10
LIBERIA	27	15	2	4	6
MADAGASCAR	6	-	-	1	5
MALAWI	3	3	-	-	-
MALI	4	-	-	-	4
MAURITIUS	6	-	-	-	6
MOROCCO	42	15	7	3	17
NEPAL	9	2	-	-	7
NIGER	5	-	-	-	5
NIGERIA	17	4	3	-	10
OMAN	7	2	2	1	2
PAKISTAN	23	5	6	-	12
ST. HELENA (INCLUDES ASCENSION ISLAND)	1	-	1	-	-
SAUDI ARABIA	643	274	283	75	11
SENEGAL	12	-	-	2	10
SEYCHELLES	4	-	4	-	-
SOMALIA	10	6	-	-	4
SOUTH AFRICA	18	2	3	2	11
SRI LANKA	8	-	-	3	5
SUDAN	54	45	2	-	7
SYRIA	11	2	-	-	9
TANZANIA, UNITED REPUBLIC OF	7	-	-	-	7
TUNISIA	48	37	1	2	8
UPPER VOLTA	6	-	-	-	6
YEMEN (SANA)	19	10	4	-	5
ZAIRE	22	9	5	-	8
ZAMBIA	4	-	-	-	4
AFLOAT	12,449	-	-	12,395	54
(4) WESTERN HEMISPHERE	20,771	8,045	2,185	7,060	3,481
ANTIGUA	129	-	1	128	-
ARGENTINA	20	4	6	4	6
BAHAMAS, THE	52	12	1	33	6
BARBADOS	9	1	-	1	7
BERMUDA	1,355	-	-	1,268	87
BOLIVIA	11	4	1	-	6
BRAZIL	49	16	7	4	22
CANADA	677	13	249	404	11
CHILE	16	4	1	1	10
COLOMBIA	25	6	5	3	11

TABLE P309A

DEPARTMENT OF DEFENSE
ACTIVE DUTY MILITARY PERSONNEL STRENGTHS BY REGIONAL AREA AND BY COUNTRY
MARCH 31, 1982

REGIONAL AREA/COUNTRY	TOTAL	ARMY	AIR FORCE	NAVY	MARINE CORPS
COSTA RICA	12	4	-	-	8
CUBA (GUANTANAMO)	2,207	-	-	1,721	486
DOMINICAN REPUBLIC	24	11	2	3	8
ECUADOR	22	8	5	2	7
EL SALVADOR	64	41	1	1	21
GUATEMALA	17	5	1	-	11
GUYANA	4	-	-	-	4
HAITI	9	2	-	-	6
HONDURAS	41	20	12	-	9
JAMAICA	10	-	-	1	9
MEXICO	24	7	5	2	10
NICARAGUA	12	3	1	-	8
PANAMA	10,227	7,862	1,866	333	166
PARAGUAY	12	3	1	1	7
PERU	25	8	6	4	7
SURINAME	2	2	-	-	-
TURKS AND CAICOS ISLANDS	1	-	-	-	-
URUGUAY	12	4	1	1	6
VENEZUELA	29	5	11	6	7
AFLOAT	5,674	-	-	3,139	2,535
(5) ANTARCTICA	78	-	-	78	-
(6) EASTERN EUROPE	186	74	18	4	90
BULGARIA	9	1	2	-	6
CZECHOSLOVAKIA	11	1	3	-	7
GERMAN DEMOCRATIC REPUBLIC	50	44	-	-	6
HUNGARY	12	4	2	-	6
POLAND	19	4	1	-	14
ROMANIA	18	6	1	-	11
UNION OF SOVIET SOCIALIST REPUBLICS	48	7	5	4	32
YUGOSLAVIA	19	7	4	-	8
(7) UNDISTRIBUTED	367	45	54	268	-

NOTE. ASHORE INCLUDES TEMPORARILY SHORE-BASED.

Section 2

RESERVE MILITARY MANPOWER STATISTICS

TABLE R11.0
 DEPARTMENT OF DEFENSE
 RESERVE COMPONENT STRENGTH SUMMARY

MARCH 31, 1982

TYPE OF DUTY	RESERVES BY RESERVE CATEGORY		
	TOTAL	OFFICER	ENLISTED A/
TOTAL	2,228,785	688,458	1,540,327
READY RESERVE			
NOT ON ACTIVE DUTY	1,330,997	209,561	1,121,436
ACTIVE STATUS	1,321,970	208,850	1,113,120
INACTIVE STATUS B/	9,027	711	8,316
STANDBY RESERVE			
ON ACTIVE STATUS	56,331	49,782	6,549
INACTIVE STATUS	12,987	7,192	5,795
	43,344	42,590	754
RETIRED - RETIRED STATUS	841,457	429,115	412,342

A/ INCLUDES OFFICER CANDIDATES.

B/ INACTIVE NATIONAL GUARD AND REP'S IN NON-PAY STATUS.

RESERVES IN "PAID STATUS"		
PAY GROUP	TOTAL	OFFICER ENLISTED
A, B, C, F, P, T, Q	933,520	130,530
U, AGR*		802,990

* FULL-TIME ACTIVE DUTY SUPPORT PERSONNEL

TABLE R12.0

DEPARTMENT OF DEFENSE
RESERVE STRENGTH - OFFICER AND ENLISTED
NOT ON ACTIVE DUTY

DATE	TOTAL	OFFICERS	ENLISTED A/
31 OCT 1981	2,225,173	687,476	1,537,697
30 NOV 1981	2,213,028	687,527	1,525,501
31 DEC 1981	2,209,695	687,384	1,522,311
31 JAN 1982	2,210,574	686,743	1,523,831
28 FEB 1982	2,210,666	686,073	1,524,593
31 MAR 1982	2,228,785	688,458	1,540,327

A/ INCLUDES OFFICER CANDIDATES.

TABLE R13.0
 DEPARTMENT OF DEFENSE
 READY RESERVE AND ACTIVE DUTY STRENGTH COMPARED TO STATUTORY LIMITATION
 MARCH 31, 1982

	TOTAL	ON ACTIVE DUTY	NOT ON ACTIVE DUTY
STATUTORY READY RESERVE LIMITATION A/	2,900,000		
DIFFERENCE	1,382,090		
READY RESERVE AND ACTIVE DUTY STRENGTH	1,517,910	167,228	1,350,682
COAST GUARD RESERVE	20,653	968	19,685
DOD RESERVE	1,497,257	166,260	1,330,997
ARMY	908,694	49,734	859,160
NATIONAL GUARD B/	414,153	479	413,674
ARMY RESERVE	494,741	49,255	445,486
NAVAL RESERVE	243,561	69,575	173,986
MARINE CORPS RESERVE	99,088	5,468	93,620
AIR FORCE	245,714	41,483	204,231
AIR NATIONAL GUARD C/	99,655	249	99,406
AIR FORCE RESERVE	146,059	41,234	104,825

A/ SECTION 205(B), ARMED FORCES RESERVE ACT OF 1952, AS AMENDED.
 B/ INCLUDES "INACTIVE NATIONAL GUARD" NUMBERING 9,027 AND REP'S NUMBERING 2,182.
 C/ INCLUDES REP'S IN A NON-PAY STATUS NUMBERING 182.

TABLE R14.0
 DEPARTMENT OF DEFENSE
 RESERVE COMPONENT PERSONNEL BY RESERVE CATEGORY
 NOT ON ACTIVE DUTY

DATE	TOTAL			
	TOTAL	READY	STANDBY	RETIRED
31 OCT 1981	2,225,173	1,317,425	60,352	847,396
30 NOV 1981	2,213,028	1,311,274	58,262	843,492
31 DEC 1981	2,209,695	1,309,312	57,170	843,213
31 JAN 1982	2,210,574	1,308,165	57,746	844,663
28 FEB 1982	2,210,666	1,311,882	57,017	841,767
31 MAR 1982	2,228,785	1,330,997	56,331	841,457

TABLE R14.0

DEPARTMENT OF DEFENSE
RESERVE COMPONENT PERSONNEL BY RESERVE CATEGORY
NOT ON ACTIVE DUTY

OFFICERS

DATE	TOTAL	READY	STANDBY	RETIRED
31 OCT 1981	687,476	206,817	53,307	427,352
30 NOV 1981	687,527	208,237	51,453	427,837
31 DEC 1981	687,384	208,291	50,716	428,377
31 JAN 1982	686,743	206,547	51,336	428,860
28 FEB 1982	686,073	206,689	50,642	428,742
31 MAR 1982	688,458	209,561	49,782	429,115

TABLE R14.0

DEPARTMENT OF DEFENSE
RESERVE COMPONENT PERSONNEL BY RESERVE CATEGORY
NOT ON ACTIVE DUTY

ENLISTED A/

DATE	TOTAL	READY	STANDBY	RETIRED
31 OCT 1981	1,537,697	1,110,608	7,045	420,044
30 NOV 1981	1,525,501	1,103,037	6,809	415,655
31 DEC 1981	1,522,311	1,101,021	6,454	414,836
31 JAN 1982	1,523,831	1,101,618	6,410	415,803
28 FEB 1982	1,524,593	1,105,193	6,375	413,025
31 MAR 1982	1,540,327	1,121,436	6,549	412,342

A/ INCLUDES OFFICER CANDIDATES.

TABLE R21.0

DEPARTMENT OF DEFENSE
RESERVE PERSONNEL ON ACTIVE DUTY BY COMPONENT

MARCH 31, 1982

COMPONENT/PERSONNEL	TOTAL	OFFICER	ENLISTED A/
TOTAL DEPARTMENT OF DEFENSE	166,260	113,915	52,345
ARMY - TOTAL	49,734	49,359	375
NATIONAL GUARD OF THE U. S.	479	402	77
ARMY RESERVE	49,255	48,957	298
NAVAL RESERVE	69,575	16,797	50,778
MARINE CORPS RESERVE	5,468	4,675	793
AIR FORCE - TOTAL	41,483	41,084	399
AIR NATIONAL GUARD OF THE U. S.	249	186	63
AIR FORCE RESERVE	41,234	40,898	336

A/ INCLUDES OFFICER CANDIDATES.

TABLE R22.0

DEPARTMENT OF DEFENSE
RESERVE STRENGTH ON ACTIVE DUTY A/

DATE	TOTAL DOD	ARMY				MARINE CORPS RESERVE	AIR FORCE	
		NATIONAL GUARD	ARMY RESERVE	NAVAL RESERVE	AIR NATIONAL GUARD		AIR FORCE RESERVE	
31 OCT 1981	171,064	559	53,083	69,053	5,408	297	42,664	
30 NOV 1981	172,669	543	53,186	70,084	5,386	266	43,204	
31 DEC 1981	172,325	525	53,134	69,911	5,277	260	43,218	
31 JAN 1982	172,134	549	53,173	70,565	5,209	265	42,373	
28 FEB 1982	169,758	495	51,627	70,434	5,551	254	41,397	
31 MAR 1982	166,260	479	49,255	69,575	5,468	249	41,234	

A/ CONTINUOUS OR EXTENDED ACTIVE DUTY.
EXCLUDES ACTIVE DUTY FOR RESERVE TRAINING.

TABLE R23.0

DEPARTMENT OF DEFENSE
RESERVE PERSONNEL BY COMPONENT AND CATEGORY
NOT ON ACTIVE DUTY

MARCH 31, 1962

COMPONENT/ PERSONNEL	TOTAL	NAT'L GUARD OF THE U. S. A/	ARMY RESERVE	NAVAL RESERVE	MARINE CORPS RESERVE	AIR B/ NAT'L GUARD OF THE U. S.	AIR FORCE RESERVE
TOTAL	2,228,785	413,674	906,521	323,857	103,924	99,406	381,403
OFFICER	688,458	39,184	298,508	161,512	13,860	12,486	162,908
ENLISTED C/	1,540,327	374,490	608,013	162,345	90,064	86,920	218,495
READY RESERVE	1,330,997	413,674	445,486	173,986	93,620	99,406	104,825
OFFICER	209,561	39,184	92,967	35,849	6,214	12,486	22,861
ENLISTED C/	1,121,436	374,490	352,519	138,137	87,406	86,920	81,964
STANDBY RESERVE	56,331	-	1,682	18,916	1,718	-	34,015
OFFICER	49,782	-	209	17,507	1,555	-	30,511
ENLISTED	6,549	-	1,473	1,409	163	-	3,504
ACTIVE STATUS	12,987	-	1,613	1,385	1,613	-	8,376
OFFICER	7,192	-	142	85	1,452	-	5,513
ENLISTED	5,795	-	1,471	1,300	161	-	2,863
INACTIVE STATUS	43,344	-	69	17,531	105	-	25,639
OFFICER	42,590	-	67	17,422	103	-	24,998
ENLISTED	754	-	2	109	2	-	641
RETIRED RESERVE	841,457	-	459,353	130,955	8,586	-	242,563
OFFICER	429,115	-	205,332	108,156	6,091	-	109,536
ENLISTED	412,342	-	254,021	22,799	2,495	-	133,027

A/ INCLUDES "INACTIVE NATIONAL GUARD" NUMBERING 9,027 TOTAL, 711 OFFICERS, 8,316 ENLISTED
AND RESERVE ENLISTMENT PROGRAM (REPS) IN A NON-PAY STATUS NUMBERING 2,182.
B/ INCLUDES REPS IN A NON-PAY STATUS NUMBERING 182.
C/ INCLUDES OFFICER CANDIDATES.

TABLE R24.0

DEPARTMENT OF DEFENSE
RESERVE STRENGTH NOT ON ACTIVE DUTY A/

DATE	TOTAL DOD	ARMY				AIR FORCE		
		B/ NATIONAL GUARD	ARMY RESERVE	NAVAL RESERVE	MARINE CORPS RESERVE	AIR NATIONAL GUARD	AIR FORCE RESERVE	
31 OCT 1981	2,225,173	400,760	899,453	339,165	98,363	98,293	395,119	
30 NOV 1981	2,213,028	401,890	894,023	331,172	97,593	96,407	389,943	
31 DEC 1981	2,209,695	404,257	894,061	327,890	96,675	98,646	388,166	
31 JAN 1982	2,210,574	406,825	894,050	328,248	95,753	98,796	386,902	
28 FEB 1982	2,210,666	410,022	897,964	326,017	95,760	98,860	382,023	
31 MAR 1982	2,228,785	413,674	906,521	323,657	103,924	99,406	381,403	

A/ INCLUDES RESERVES ON ACTIVE DUTY
FOR RESERVE TRAINING PURPOSES.
B/ INCLUDES "INACTIVE" NATIONAL GUARD.

TABLE R26.5

DEPARTMENT OF DEFENSE
SELECTED RESERVE STRENGTH A/

COMPONENT/ PERSONNEL	OCT 1981	NOV 1981	DEC 1981	JAN 1982	FEB 1982	MAR 1982
TOTAL DOD OFFICERS	906,083	908,061	913,181	918,414	924,081	933,520
ENLISTED	127,714	127,790	128,615	129,207	129,561	130,530
	778,369	780,271	784,566	789,207	794,520	802,990
ARMY NATIONAL GUARD OFFICERS	389,882	391,010	393,121	395,667	399,040	402,465
ENLISTED	38,451	38,400	38,464	38,469	38,437	38,473
	351,431	352,610	354,657	357,198	360,603	363,992
ARMY RESERVE OFFICERS	232,404	233,398	235,722	237,318	238,977	243,093
ENLISTED	44,411	44,649	44,988	45,346	45,510	45,959
	187,993	188,749	190,734	191,972	193,467	197,134
NAVAL RESERVE OFFICERS	86,989	86,522	87,010	87,690	88,043	88,524
ENLISTED	16,328	16,138	16,477	16,711	16,911	17,098
	70,661	70,384	70,533	70,979	71,132	71,426
MARINE CORPS RESERVE OFFICERS	36,971	36,997	36,661	36,717	36,717	37,186
ENLISTED	2,496	2,530	2,523	2,531	2,531	2,718
	34,475	34,467	34,138	34,186	34,186	34,468
AIR NATIONAL GUARD OFFICERS	98,167	98,287	98,507	98,659	98,736	99,224
ENLISTED	12,369	12,397	12,409	12,414	12,418	12,486
	85,798	85,890	86,098	86,245	86,318	86,738
AIR FORCE RESERVE OFFICERS	61,670	61,847	62,160	62,363	62,568	63,028
ENLISTED	13,659	13,676	13,754	13,736	13,754	13,796
	48,011	48,171	48,406	48,627	48,814	49,232

A/ INCLUDES PAY GROUPS A,B,C,F,P,T,Q,U,AGR (FULL-TIME ACTIVE DUTY SUPPORT PERSONNEL)

G L O S S A R Y O F T E R M S

Active Duty. Full-time duty in the active service of a uniformed service, including duty on the active list, full-time training duty, annual training duty, and attendance while in the active service, at a school designated as a service school by law or by the Secretary concerned.

Actual Strength. The number of personnel in, or projected to be in, an organization or account at a specified point in time.

Armed Forces of the United States. Includes the Army, Navy, Air Force, Marine Corps, and Coast Guard, and all components thereof.

Assigned Strength. Actual strength of an entire service, not necessarily equal to combined unit actual strengths since individuals may be assigned but not joined.

Authorized Strength. The total strength authorized by Congress (for internal Service applications only). Authorized strength may be used synonymously with documented strength as defined below.

Cadet or Midshipman Enrolled in the Reserve Officers Training Corps (ROTC) Program. A member of the Senior Reserve Officer Training Corps (SROTC) under 10 U.S.C. 2107 for tuition, fees, books, and laboratory expenses.

Continental United States. Unless otherwise qualified, means the 48 contiguous States and the District of Columbia.

Enlisted Member. A person enlisted, enrolled, or conscripted into the military service.

- Enlistment. (1) A voluntary entrance into military service under enlisted status, as distinguished from induction through Selective Service.
- (2) A period of time, contractual or prescribed by law, which enlisted members serve between enrollment and discharge.

Officer. A commissioned or warrant officer.

Reserve Components. The Army National Guard of the United States, Army Reserve, Naval Reserve, Marine Corps Reserve, Air National Guard of the United States, Air Force Reserve, Coast Guard Reserve, and the Reserve Corps of the Public Health Service.

Service Academy Cadet or Midshipman. A person in training at one of the service academies to become a commissioned officer.

Transients. All military members who are not available for duty while executing permanent change of station (PCS) orders. Transients shall comprise all military personnel in a travel, proceed, leave enroute, or temporary duty enroute status on PCS orders to execute an accession, separation, training, operational, or rotational move.

Warrant Officer. A person who holds a commission or warrant in a warrant officer grade.