

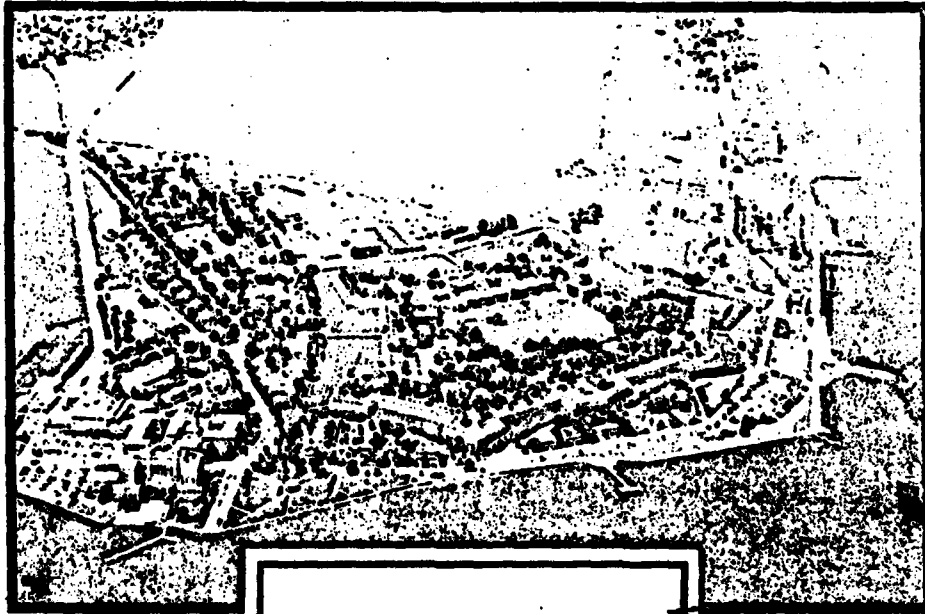
DTC COPY

9

DATA CONTROL NUMBER
JOB NO / PROJECT NO

HEADQUARTERS
UNITED STATES ARMY TRAINING AND DOCTRINE COMMAND
FORT MONROE, VIRGINIA 23651

Copy available to DTC does not
permit fully legible reproduction



AD A116727

REC'D
JUL 8 1982
H

Word Criticality Analysis
MOS: 62E
Skill Level 1

PREPARED BY: OPERATIONS DIV, DPFO

ATDP FORM 109-1
Oct 66 edition may be used
until exhausted.

COPY ____ OF ____ COPIES

82 07 06 208

DISCLAIMER NOTICE

**THIS DOCUMENT IS BEST QUALITY
PRACTICABLE. THE COPY FURNISHED
TO DTIC CONTAINED A SIGNIFICANT
NUMBER OF PAGES WHICH DO NOT
REPRODUCE LEGIBLY.**

UNCLASSIFIED

SECURITY CLASSIFICATION OF THIS PAGE (When Data Entered)

REPORT DOCUMENTATION PAGE		READ INSTRUCTIONS BEFORE COMPLETING FORM
1. REPORT NUMBER 62E	2. GOVT ACCESSION NO. AD-A116 727	3. RECIPIENT'S CATALOG NUMBER
4. TITLE (and Subtitle) Word Criticality Analysis MOS: 62E Skill Level: 192		5. TYPE OF REPORT & PERIOD COVERED Final
7. AUTHOR(s) Dr. Alexander A. Longo		6. PERFORMING ORG. REPORT NUMBER
9. PERFORMING ORGANIZATION NAME AND ADDRESS Training Developments Institute ATTN: ATTC-DOR Fort Monroe, VA 23651		8. CONTRACT OR GRANT NUMBER(s)
11. CONTROLLING OFFICE NAME AND ADDRESS Training Developments Institute ATTN: ATTC-DOR Fort Monroe, VA 23651		10. PROGRAM ELEMENT, PROJECT, TASK AREA & WORK UNIT NUMBERS
14. MONITORING AGENCY NAME & ADDRESS (if different from Controlling Office)		12. REPORT DATE Sep 1981
		13. NUMBER OF PAGES 13
		15. SECURITY CLASS. (of this report) Unclassified
		15a. DECLASSIFICATION/DOWNGRADING SCHEDULE
16. DISTRIBUTION STATEMENT (of this Report) Approved for Public Release; Distribution is unlimited.		
17. DISTRIBUTION STATEMENT (of the abstract entered in Block 20, if different from Report)		
18. SUPPLEMENTARY NOTES		
19. KEY WORDS (Continue on reverse side if necessary and identify by block number) MOS Vocabulary Readability Comprehension of text Curriculum Development		
20. ABSTRACT (Continue on reverse side if necessary and identify by block number) This report contains terms selected as having some degree of criticality in the training/performance of tasks contained in the respective MOS Soldier's Manual (SM). These critical words were selected by subject matter/job experts knowledgeable in their MOS. The vocabulary set used as the basis for critical word analysis was the Word Frequency Report based on the SM for the same MOS.		

Contents and General Information

1. The Word Criticality Analysis (WCA) reports were reproduced exactly as generated via computer printout. The prime users of this document were fully cognizant of its contents and required no special instructions for interpretation. However, for the sake of other readers, the following brief description of contents is provided.

2. The WCA reports for most MOS are divided as follows:

- o Skill Level I
- o Skill Level II

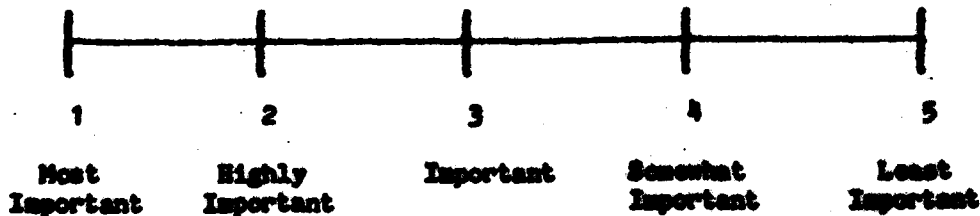
However, due to the way some Soldier Manuals are constructed, the WCA for some MOS have both Skill Levels merged into one report. Each Skill Level is subdivided into two sections.

a. Introductory - these MOS critical words, identified by the code "TRN", represent terms unmatched on the master tape for that MOS. (Reasons for this include: words volunteered as critical; keypunching errors; updating master tapes per changes in SM, etc). NOTE: The number to the left of each critical word is its criticality index defined below.

b. Main - these MOS critical words are ranked alphabetically within a criticality index (defined below) that also is ranked from 1-5. The numbers to the right of the critical words represent the SM page on which that term appeared and its frequency of appearance. Example "222,4" is interpreted as: "4 times on page 222". NOTE: Due to computer programming/sort difficulties, the accuracy of correct page referencing is only approximately 80% for most reports. Improvements in programming and coding increased this accuracy to 95% in those reports completed last (i.e., dated Jan-Mar 82).

3. Word Criticality Index:

The following 5 point rating scale was used by a team of up to 3 subject matter experts from Army MOS proponent schools to rate each word selected as having some importance for training/performing a critical task:



Accession For	
NTIS SERIAL	
DTIC TAB	
Unannounced	
Justification	
By	
Distribution/	
Availability Codes	
Dist	Avail and/or
	Special
A	

HEADQUARTERS
UNITED STATES ARMY TRAINING AND DOCTRINE COMMAND
FORT MONROE, VIRGINIA 23651

DATA CONTROL NUMBER _____
100 NO / PROJECT NO

WCA

OUT 22 1960

ORAD



WFE SLI

KP = 8-9

PREPARED BY: OPERATIONS DIV, DPPD

COPY _____ OF _____ COPIES

ATOP FORM 100 September 1958 (Rev. 7-57) (When in use)

MOS 62E SKILL 1

SEQUENTIAL DATA MANAGER

PAGE NO 2 TYPE RECORD BYTES

- 4 CONTINUOUSLY
- 4 CUT OFF
- 1 DUZERS
- 1 DURING OPERATION
- 1 EARTH MOVING
- 1 FORT PIONOS
- 2 FORWARD
- 1 FOUR WAY
- 3 GENERATOR ALTERNATOR
- 1 HARDIED
- 1 LETORHEAD
- 1 LETORHEAD-WESTINGHOUSE
- 3 MAINTAINS
- 2 RAISY-LOWER
- 1 TENGTHS

TRA	80
TRA	80
TRA	80
TRA	80
TRA	80
TRA	80
TRA	80
TRA	80
TRA	80
TRA	80
TRA	80
TRA	80
TRA	80
TRA	80
TRA	80
TRA	80
TRA	80
TRA	80

MASTER READ 4296
 LRECL 32
 BLKSIZE 3136

TRANS READ 381
 LRECL 80
 BLKSIZE 8000

UPDATED RECORDS 804
 LRECL 32
 BLKSIZE 3136

POS WORD LIST BY PAGE

DATE 0229 2068 PAGE 1

1	AIRBASES	330.4			
1	AVOID	02.3	14.1		
1	AXLE	02.1			
1	BACKED	7.1			
1	BACKFILL	02.3			
1	BANK	02.0	30.1		
1	BAR	24.1	241.1	02.1	
1	BASE	02.3			
1	BEARING	02.10			
1	BEARINGS	02.1			
1	BELOW	02.0			
1	BENCH	7.2	02.3		
1	BOLTS	02.4			
1	BUM	02.3			
1	BOARD	02.1			
1	BOTTOM	02.13			
1	BOULDERS	02.1			
1	BOWL	02.9			
1	BUCKET	300.5	02.30		
1	BULLDOZER	7.1			
1	BULLDOZING	02.3			
1	BUMP	7.1			
1	CABLE	02.8			
1	CAP	02.2			
1	CAPABILITY	02.1			
1	CAPACITY	300.1	02.4		
1	CASE	300.1	02.1		
1	CATERPILLAR	02.1	24.1	242.2	241.4
1	CAUTION	02.7			
1	CENTER	02.14			
1	CENTERLINE	02.7			
1	CIRCLE	02.0			
1	COMMON	02.30			
1	COMPACTION	0.1	5.1	2.1	301.4
1	CONCRETE	02.2			
1	CONDENSATION	02.1			
1	CONSTRUCTION	02.7	7.1		
1	CONSUMPTION	02.4			
1	CONTROLS	02.2	7.1	242.2	
1	COOLANT	02.3			
1	CUTS	02.7			
1	CUTTING	02.7			
1	CYCLE	02.2			
1	D/D	300.2	241.4		
1	DEPRESS	02.4			
1	DEPTH	02.24	7.4		
1	DESIGN	330.7			
1	DETERMINATION	02.1			
1	DIAMETER	02.9			
1	DIG	02.1			

MOS WORD LIST BY PAGE

DATE 00209 2050 PAGE 4

1	RESISTANCE	7,1			
1	RETURN	62,1			
1	RIG	62,2			
1	RIP	62,7 242,2			
1	RIPPER	62,9			
1	ROAD	62,16 36,2 380,6 356,4			
1	ROLLERS	62,1			
1	ROUT	62,1			
1	ROTATE	62,4			
1	ROUGH	62,1			
1	SELECTOR	62,7			
1	SIDE	62,25 7,1			
1	SIDHILL	62,2			
1	SOFT	62,1			
1	SOILS	62,1			
1	SUCCESSING	62,1			
1	SUCTION	62,1			
1	SUFFICIENT	7,1			
1	SUITABLE	62,2			
1	TACKLE	62,1			
1	TECHNIQUE	62,1			
1	TEETH	62,8 14,2			
1	TILT	62,6			
1	TOE	62,7			
1	VERTICAL	62,2			
1	VOLUME	331,7			
1	W/DOZER	242,2 62,2			
1	W/DRUMBAR	62,2 242,1			
1	WABCO	380,2 242,1			
1	WASHER	62,4			
1	WEAR	62,8			
1	WELDED	6,2 62,1 8,8			
1	WESTINGHOUSE	380,1			
1	WIDTH	299,1 62,7			
1	WINCH	62,21			
1	WINCHING	62,1			
1	WINDROW	62,6 36,1 7,1			
1	YARDS	62,1			
2	AVERAGE	62,2			
2	BOLTED	62,1			
2	BOUNDARIES	62,1			
2	CIRCULATE	62,1			
2	COMPLETE	62,12			
2	CONDITION	62,13			
2	CONFORM	62,1			
2	CONNECT	62,10			
2	CONNECTORS	62,1			
2	CONTACT	62,1			
2	CORROSION	62,1			
2	COURSE	62,3			

4	REPORT	62,11							
4	RING	62,1							
4	SEPARATE	62,1							
4	SERIAL	62,1	6,1	4,1					
4	SETTING	62,1							
4	SEVERAL	7,1							
4	SUBSEQUENT	7,1							
4	SUBSYSTEM	62,1							
4	SUMMARIES	62,1							
4	SUPPERSTRUCTURE	62,3	8,3						
4	SUPPORT	7,1	3,1	380,3	278,1	247,1	62,2	542,23	
4	SURROUNDING	299,1	62,1						
4	TERRAIN	62,1							
4	TYPE	380,3	62,1	8,3	6,3				
4	TYPICAL	356,2	36,1						
4	VARY	356,2	62,3	36,1					
4	VERIFY	62,3							
4	WARD	62,1							
5	WARE	62,1							

Addit



**HEADQUARTERS
UNITED STATES ARMY TRAINING AND DOCTRINE COMMAND
FORT MONROE, VIRGINIA 23651**

DATA CONTROL NUMBER /
JOB NO / PROJECT NO

FWCA
DEC 5 1980
ORAD



**WORD CRIT
MOS 62E
SKILL LEVEL 1**

KP =  (6)
R = 

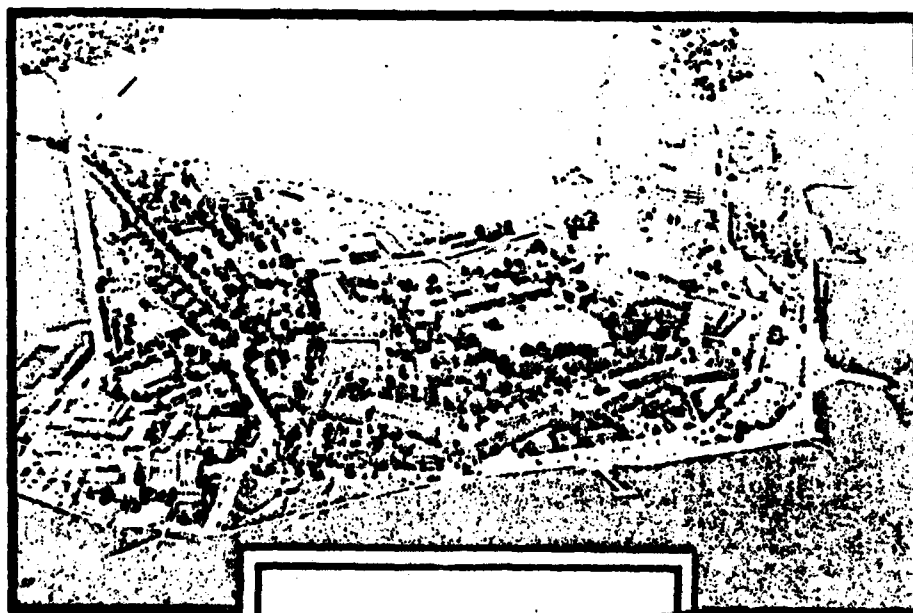
PREPARED BY: OPERATIONS DIV. DPFO

ATOP FORM Oct 88 109-1 For 88 edition may be used until exhausted.

Addit COPY OF COPIES

HEADQUARTERS
UNITED STATES ARMY TRAINING AND DOCTRINE COMMAND
FORT MONROE, VIRGINIA 23651

DATA CONTROL NUMBER
JOB NO / PROJECT NO



Word Criticality Analysis
MOS: 62E
Skill Level 2

PREPARED BY: OPERATIONS DIV, DPFO

FORM
ATOP Oct 88 109-1 Feb 89 edition may be used
until exhausted.

COPY ____ OF ____ COPIES



HEADQUARTERS

DATA CONTROL NUMBER

~~JOB NO / PROJECT NO~~

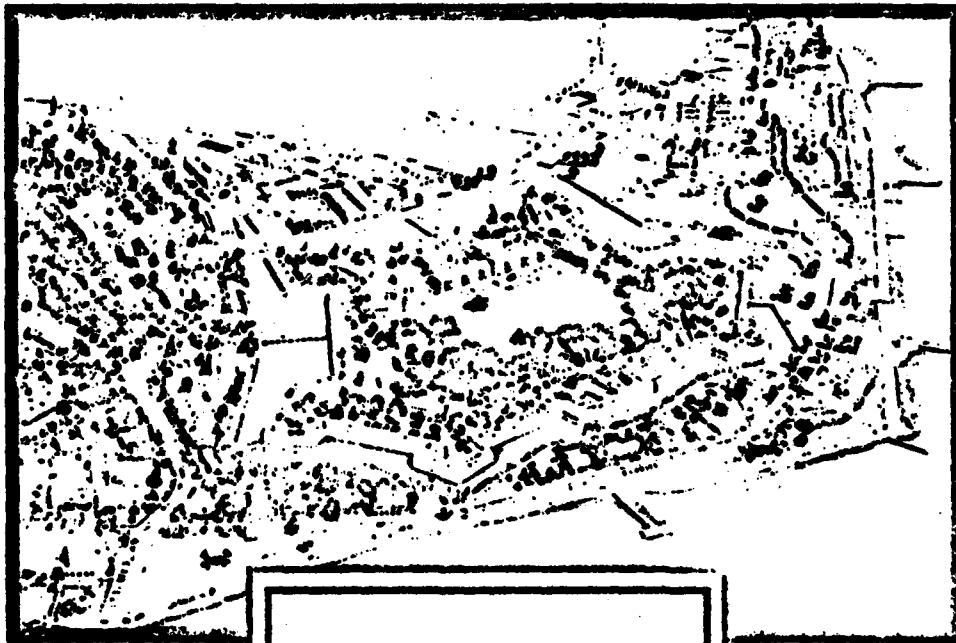
UNITED STATES ARMY TRAINING AND DOCTRINE COMMAND

FORT MONROE, VIRGINIA 23651

WCA

OCT 22 1980

ORAD
ENS



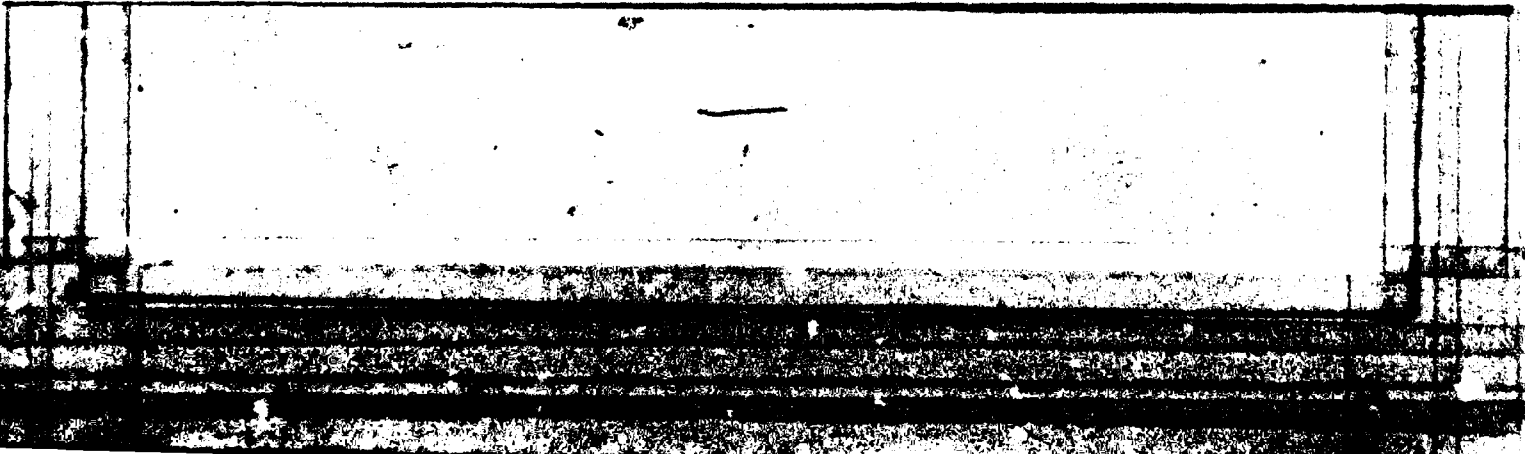
62E SL2

KP = @
P = C

PREPARED BY: OPERATIONS DIV, DPCS

COPY ___ OF ___ COPIES

ATDP FORM 109 (REPLACES AFM 109, Jul 78, WHICH IS OBSOLETE)



SEQUENTIAL DATA MANAGER

MOS 62E SKILL 2
PAGE NO 2 TYPE RECORD BYTES

4 BITUMENIOUS
2 FOREWARD
1 HELIPORT
2 TASKS
3 U-TYPE

TQA 00
TQA 00
TQA 00
TQA 00

MASTER READ 3223
LRECL 32
BLKSIZE 3136

TRANS READ 179
LRECL 00
BLKSIZE 0000

UPDATED RECORDS 267
LRECL 32
BLKSIZE 3136

MOS WORD LIST BY PAGE

DATE 00292 0132 PAGE 1

1	AIRBASES	330.1				
1	AVOID	02.1	30.1			
1	BACK	02.1	30.1			
1	BANK	14.1	10.1	331.1	02.8	30.3
1	BASE	11.1	02.4			
1	BLADE	02.16	30.13	14.2	11.3	10.1
1	BELTS	02.2				
1	BOTTOM	30.1	02.4			
1	BOULDERS	02.1				
1	BUCKET	02.3				
1	CAPACITY	02.3				
1	CIRCLE	30.2	14.1	11.1	02.3	
1	COMMON	02.3				
1	COMPACTION	331.2				
1	CONSTRUCT	02.4				
1	CONTROL	02.1				
1	CUTS	02.6	10.3			
1	CUTTING	14.1	02.4	30.1		
1	CYCLE	02.1				
1	DAMAGE	02.1				
1	DEEP	02.2				
1	DELIVERED	11.1				
1	DEPTH	02.3				
1	DESIGN	330.1				
1	DESIRED	10.1				
1	DIAT	10.1	30.1			
1	DISTANCE	02.1				
1	DITCH	02.10	30.4	331.2		
1	DITCHES	02.3				
1	DITCHING	331.3				
1	DOZER	8.1				
1	DUMP	02.7				
1	EARTH	02.7				
1	EARTHMOVING	331.2				
1	EQUIPMENT	350.4	331.2	02.1		
1	EXCESS	11.2				
1	EXCESSIVE	30.1				
1	EXISTING	02.4				
1	EXPEDIENT	02.1				
1	EXTREME	02.2	30.1	14.1		
1	FEATHER	11.1				
1	FEBT	02.7	30.1			
1	FINAL	02.1	11.2			
1	FOOT	02.2				
1	GOVERNED	02.1				
1	HAND	14.1				
1	HAULING	331.1				
1	HAZARDS	02.1				
1	HEAD	30.1				
1	HORIZONTAL	30.1				

NOS WORD LIST BY PAGE

DATE 00292 0132 PAGE 2

1	CANE	02,7					
1	LAYERS	02,1					
1	LEAH	11,1	02,2	30,2			
1	LEAVING	02,1	30,1				
1	LEVEL	02,1					
1	LEVELED	331,1	30,1				
1	LEVELING	11,1					
1	LEVER	02,1					
1	LIFT	14,2	11,1	02,4	30,2		
1	LOAD	02,11	30,1				
1	LOADER	02,5					
1	LOADING	331,1	02,1				
1	LOCK	02,1					
1	LOOSE	10,1					
1	MACHINE	02,1					
1	MAINTAL	300,4	02,1	20,1	11,2	0,1	
1	MATERIALS	02,1					
1	MIXING	02,2					
1	MODEL	300,4	350,2				
1	MULCHARD	14,1	02,0	30,3			
1	MOTOR	30,1	11,2	331,1			
1	MOTORIZED	300,4	02,9				
1	PARALLEL	02,1					
1	PARKED	02,0					
1	PASS	02,1	11,2				
1	PASSES	02,2					
1	PAVING	11,1					
1	PENETRATES	02,1					
1	PINS	02,5					
1	PITCH	02,3					
1	PIVOT	02,1					
1	POSITION	14,2	10,1	02,9	30,0		
1	REMOVING	331,1					
1	ROAD	02,11	11,1	300,4	350,3	331,1	
1	ROADDED	02,0					
1	ROADWAY	02,5					
1	ROLL	02,1					
1	ROTATE	30,2	14,1	02,2			
1	SAFETY	20,1	11,2	0,1	331,1	30,1	
1	SIDE	02,0	30,3	11,3			
1	SIDE-SHIFT	02,1					
1	SIDES	02,1					
1	SITE	02,5					
1	SOFT	10,1					
1	SUILL	02,1					
1	SUBGRADE	02,1					
1	SUFFICIENTLY	02,1					
1	SURFACE	02,2	11,1				
1	TILTED	02,1					
1	TILTING	02,1					

NOS WORD LIST BY PAGE

DATE 00292 0122 PAGE 3

1	ARE	02.2				
1	TOP	02.3				
1	VOLUME	331.2				
1	WIDTH	02.2				
1	WINDOW	30.4	11.1	331.1	02.3	
1	YARDS	02.1				
2	AVERAGE	02.2				
2	BOUNDARIES	02.1				
2	COMPLETED	02.1				
2	CONDITION	02.2				
2	CONFORMING	02.1				
2	COURSE	02.7	11.1			
2	DOUBLE	02.2				
2	EXTENDED	02.1	14.1			
2	FIGURE	02.2	11.1			
2	FINISH	02.4	10.1	331.1		
2	HOLE	02.1	30.1			
2	HOLE	02.2				
2	LATERAL	02.2				
2	LETOURNEAU-WESTINGHOUSE	390.4				
2	LIFTING	331.1				
2	LOCKING	02.0				
2	LUNG	02.4				
2	LOSS	10.1				
2	LOWER	30.3	10.1	331.1	02.0	
2	LOWERED	30.1				
2	MITCHES	02.1				
2	OUTSIDE	02.3				
2	OVER	02.4	10.1			
2	REFERENCE	330.2	331.1	02.9	10.1	
2	REPEATING	02.1				
2	SECURE	02.3				
2	SET	02.3	30.2			
2	SINGLE	02.4				
2	SUCCESSIVE	02.1				
3	BELTS	02.1				
3	COATED	02.1				
3	CUTTER	02.4				
3	COUNTERACT	02.1				
3	DATA	02.2				
3	DIRECTLY	02.1				
3	EVERY	02.1				
3	MAINTAINING	02.1				
3	MAINTENANCE	30.1	11.2	0.1	300.3	331.1
3	SERVICES	02.0	02.7	30.1		
3	TIE	02.0	30.1			
3	VIEW	02.1				
4	BEEN	02.3				
4	BRING	02.1	11.1			
4	EITHER	02.1				

NOS WORD LIST BY PAGE

DATE 00292 0122 PAGE 4

4	SQUARE	0201			
4	FIRST	0201			
4	FURN	1101	0201		
4	HEIGHT	3001			
4	LEAD	0201			
4	LIGHTER	1101			
4	LIMITS	0201			
4	LINE	0207	3001	1401	
4	LINK	0206	3002	1402	
4	LOCATED	0201			
4	MINIMIZE	0201			
4	MINUTES	0201			
4	PERFORM	0203			
4	PERSONNEL	0001	3301	3001	2001
4	QUIRING	0201			
4	RATIO	0202			
4	TACTICAL	0207			
4	TYPE	0001	0201		
4	TYPICAL	35002			
4	VARY	35002			

FILE COPY NUMBER OF THIS SERVICE. SEE THIS LIST FOR...

Add/SL 2

HEADQUARTERS

DATA CONTROL NUMBER _____
JOB NO / PROJECT NO

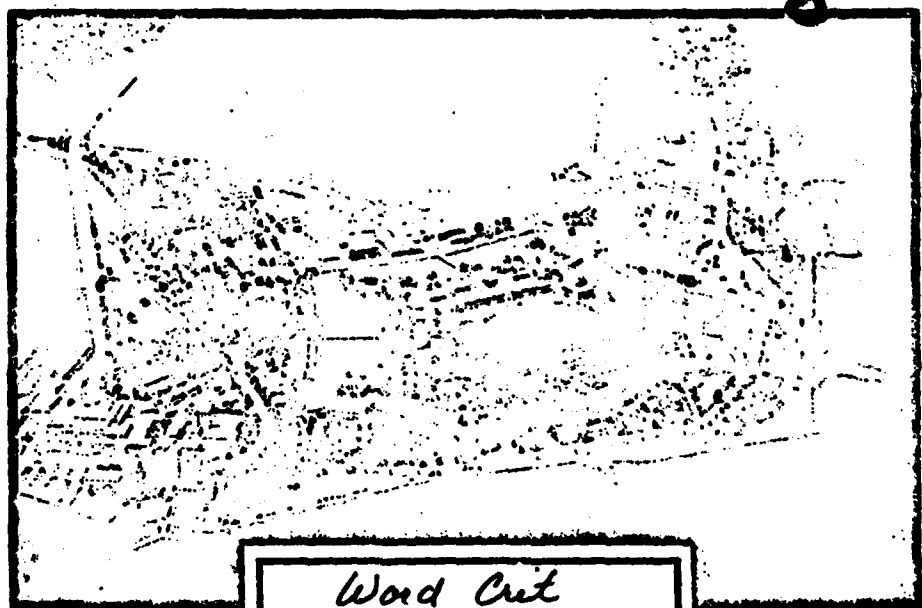
UNITED STATES ARMY TRAINING AND DOCTRINE COMMAND

FORT MONROE, VIRGINIA 23651

ENG

WCA

NOV 8 1960



~~ORAD~~
~~_____~~
~~_____~~

Word Crit
Mae-62E
Skill Level 2
Add it

KP = @
P = @

PREPARED BY: OPERATIONS DIV, DPFO

ATDP FORM 109-1
Oct 60 109-1
Use of edition only to word
until authorized.

COPY _____ OF _____ COPIES

POS WORD LIST BY PAGE

MOS-62E
SKILL LEVEL 2

DATE 80319 1744 PAGE

1

1	AGGREGATE	62.5				
1	ANGLE	62.1				
1	BLADE	10.1	62.16	36.13	14.2	11.3
1	CLAMP	62.2				
1	DRAINAGE	62.3				
1	EDGE	62.3	11.2			
1	EROSION	36.1	10.1			
1	GRADE	62.7				
1	GRUBBED	62.2				
1	SCRAPERS	26.1				
1	SHELL	62.1				
1	SHIFTED	11.1				
1	SHOULDER	62.2	36.1			
1	SLICE	62.1				
1	SLOPE	10.3	331.3	62.11	36.1	
1	SMOOTH	11.1				
1	SPILED	36.1				
1	STAKES	62.11				
1	STANDARDS	62.5				
1	STOCKPILE	62.4				
1	STRIP	62.2				
1	STRUCK	62.2				
1	THICKNESS	62.1				
1	UTILIZATION	331.3				
2	ANGLED	62.1				
2	PLAYE	62.1				
2	SLOPING	10.1	62.2	36.1		
2	TRAVELING	11.1				
2	TRAVELWAY	62.4				

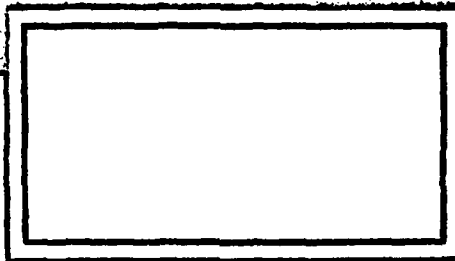
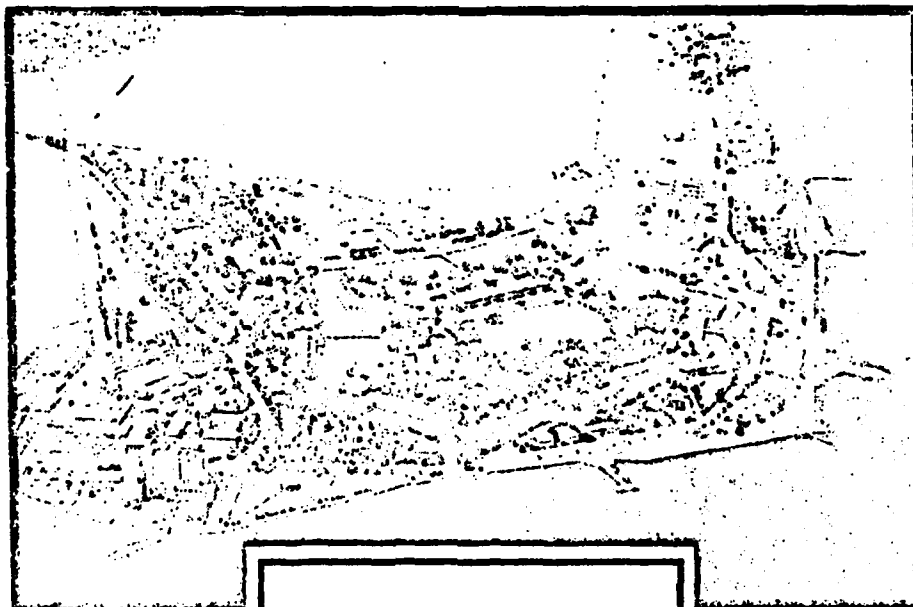
HEADQUARTERS

DATA CONTROL NUMBER

JOB NO / PROJECT NO

UNITED STATES ARMY TRAINING AND DOCTRINE COMMAND

FORT MONROE, VIRGINIA 23651



PREPARED BY: OPERATIONS DIV, DPFO

ATDP FORM **109-1**

Feb 66 edition may be used
until exhausted.

COPY _____ OF _____ COPIES

HEADQUARTERS
UNITED STATES ARMY TRAINING AND DOCTRINE COMMAND
FORT MONROE, VIRGINIA 23651

DATA CONTROL NUMBER /
JOB NO / PROJECT NO

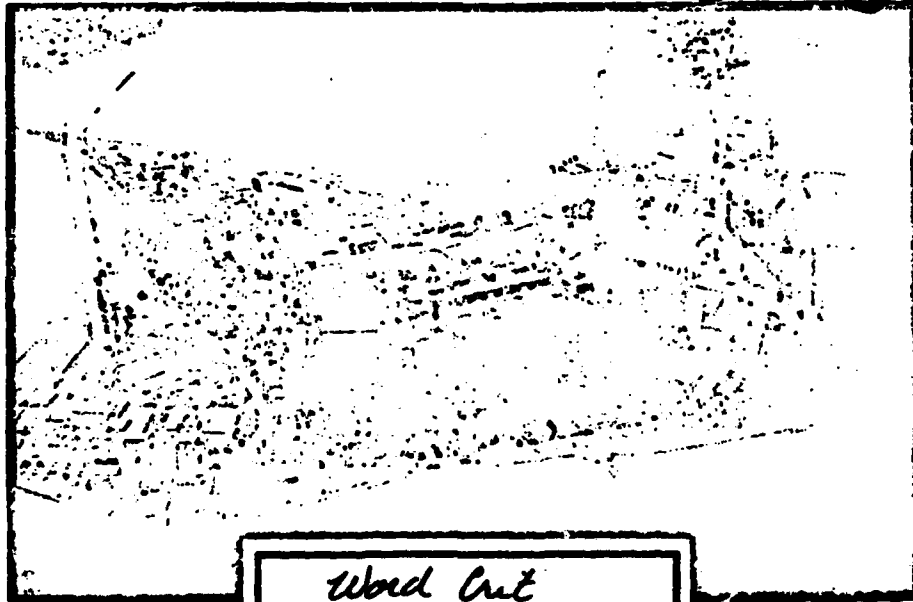
Allt

WCA

NOV 18 1980

ORAD

ENS



Word Cut
Mac 62E
skill level 2
Allt

PREPARED BY: OPERATIONS DIV, DPFO

FORM 109-1
ATOP Oct 89 109-1 For all editions may be used until superseded.

COPIY OF COPIES

MOG WORD LIST BY PAGE

MOS-62E
SKILL LEVEL 2

DATE 00319 1744 PAGE 1

1	AGGREGATE	62,5				
1	ANGLE	62,1				
1	BLADE	10,1	62,16	36,13	14,2	11,3
1	CLAMP	62,2				
1	DRAINAGE	62,3				
1	EDGE	62,3	11,2			
1	EROSION	36,1	10,1			
1	GRADE	62,7				
1	GRUBBED	62,2				
1	SCRAPERS	26,1				
1	SHELL	62,1				
1	SHIFTED	11,1				
1	SHOULDER	62,2	36,1			
1	SLICE	62,1				
1	SLOPE	10,3	331,3	62,11	36,1	
1	SMOOTH	11,1				
1	SPILLED	36,1				
1	STAKES	62,11				
1	STANDARDS	62,5				
1	STACKPILE	62,4				
1	STRIP	62,2				
1	STRUCK	62,2				
1	THICKNESS	62,1				
1	UTILIZATION	331,3				
2	ANGLE	62,1				
2	PLATE	62,1				
2	SLEEPING	10,1	62,2	36,1		
2	TRAVELING	11,1				
2	TRAVELWAY	62,4				

END

DATE
FILMED

8 8 2

DTIC