

DTIC FILE COPY

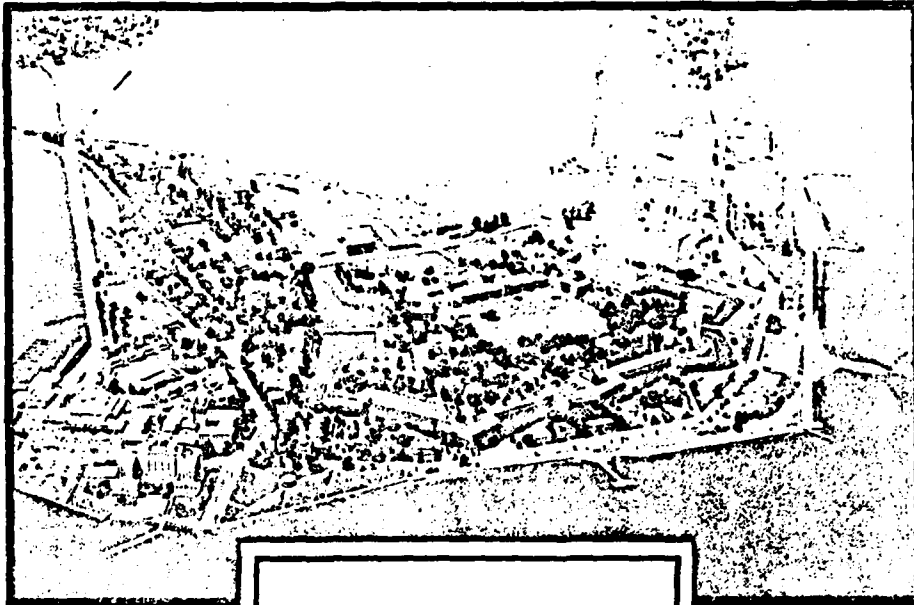
HEADQUARTERS

DATA CONTROL NUMBER
JOB NO / PROJECT NO

UNITED STATES ARMY TRAINING AND DOCTRINE COMMAND

FORT MONROE, VIRGINIA 23651

AD A117121



Copy available to DTIC does not
permit fully legible reproduction.

DTIC
ELECTE
JUL 20 1982
S D F

This document has been approved
for public release and sale; its
distribution is unlimited.

Word Frequency Analysis
MOS: 62F
Skill Level 1

COPY OF COPIES
82 07 20 086

PREPARED BY: OPERATIONS DIV, DPFO
FORM
ATDP Oct 80 109-1 Feb 80 edition may be used
until exhausted.

DISCLAIMER NOTICE

**THIS DOCUMENT IS BEST QUALITY
PRACTICABLE. THE COPY FURNISHED
TO DTIC CONTAINED A SIGNIFICANT
NUMBER OF PAGES WHICH DO NOT
REPRODUCE LEGIBLY.**

UNCLASSIFIED

SECURITY CLASSIFICATION OF THIS PAGE (When Data Entered)

| REPORT DOCUMENTATION PAGE | | READ INSTRUCTIONS BEFORE COMPLETING FORM |
|--|--|---|
| 1. REPORT NUMBER 62F | 2. GOVT ACCESSION NO. AD-A117121 | 3. RECIPIENT'S CATALOG NUMBER |
| 4. TITLE (and Subtitle) Word Frequency Analysis MOS: 62F Skill Level 142 | 5. TYPE OF REPORT & PERIOD COVERED Final | |
| | 6. PERFORMING ORG. REPORT NUMBER | |
| 7. AUTHOR(s) Dr. Alexander A. Longo | 8. CONTRACT OR GRANT NUMBER(s) | |
| 9. PERFORMING ORGANIZATION NAME AND ADDRESS Training Developments Institute ATTN: ATTC-DOR Fort Monroe, VA 23651 | 10. PROGRAM ELEMENT, PROJECT, TASK AREA & WORK UNIT NUMBERS | |
| 11. CONTROLLING OFFICE NAME AND ADDRESS Training Developments Institute ATTN: ATTC-DOR Fort Monroe, VA 23651 | 12. REPORT DATE May 1981 | |
| | 13. NUMBER OF PAGES 32 | |
| 14. MONITORING AGENCY NAME & ADDRESS (if different from Controlling Office) | 15. SECURITY CLASS. (of this report) Unclassified | |
| | 15a. DECLASSIFICATION/DOWNGRADING SCHEDULE | |
| 16. DISTRIBUTION STATEMENT (of this Report) Approved for Public Release; Distribution is unlimited. | | |
| 17. DISTRIBUTION STATEMENT (of the abstract entered in Block 20, if different from Report) | | |
| 18. SUPPLEMENTARY NOTES | | |
| 19. KEY WORDS (Continue on reverse side if necessary and identify by block number) MOS Vocabulary Readability Comprehension of text Curriculum Development | | |
| 20. ABSTRACT (Continue on reverse side if necessary and identify by block number) This report contains a frequency count of the basic vocabulary contained in the Army Soldier's Manual for the MOS/Skill Level designated in the title (item 4). This frequency count reflects only skill levels I/II and excludes the common tasks and those sections which are redundant/incidental to vocabulary analysis (e.g. table of contents, appendices, references, charts, etc). This vocabulary is only a sampling of the entire MOS vocabulary and is subject to change with MOS changes. | | |

DD FORM 1473 1 JAN 73 EDITION OF 1 NOV 65 IS OBSOLETE

UNCLASSIFIED
SECURITY CLASSIFICATION OF THIS PAGE (When Data Entered)

Contents and General Information

1. The Word Frequency Analysis (WFA) reports were reproduced exactly as generated via computer printout. The prime users of this document were fully cognizant of its contents and required no special instructions for interpretation. However, for the sake of other readers, the following brief description of contents is provided.

2. The WFA reports for most MOS are divided as follows:

- o Skill Level I
- o Skill Level II

However, due to the way some Soldier's Manuals are constructed, the WFA for some MOS have both Skill Levels merged into one report. Each Skill Level is subdivided into two sections.

a. Alphabetic Rank: this section lists all terms in alphabetical order (left to right). To the left of each term is the frequency which that term appears in the text submitted for word frequency count.

b. Frequency Rank: this section lists the same terms contained in the first section of the report but reranked in accordance with their frequency of appearance from highest to lowest. Also, the terms are ranked alphabetically within the same frequency level.

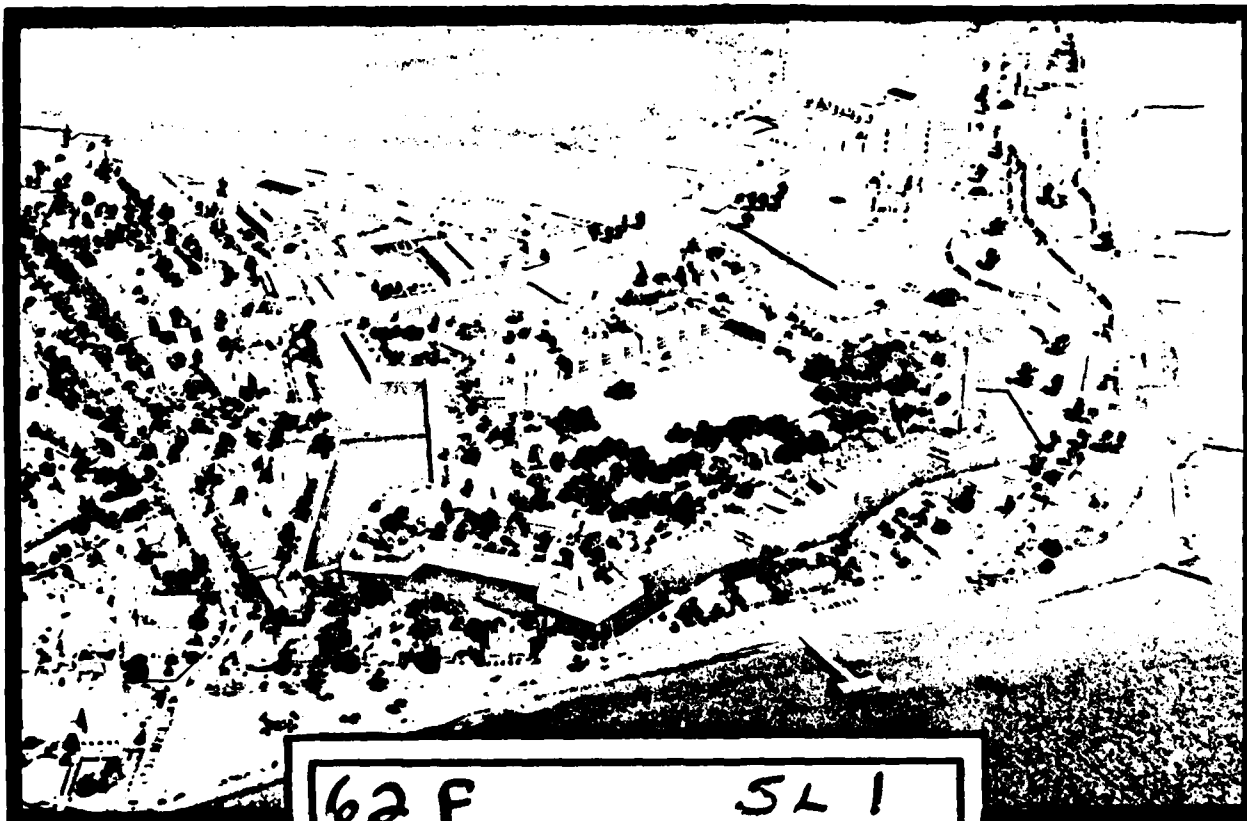
3. It should be noted that the basis of this WFA is the Soldier's Manual. Consequently, this vocabulary set is only a sampling of the entire MOS vocabulary and is subject to change.

| | |
|--------------------|-------------------------------------|
| Accession For | |
| NTIS GRA&I | <input checked="" type="checkbox"/> |
| DTIC TAB | <input type="checkbox"/> |
| Unannounced | <input type="checkbox"/> |
| Justification | |
| By | |
| Distribution/ | |
| Availability Codes | |
| Dist | Avail and/or Special |
| A | 23 CF |



**HEADQUARTERS
UNITED STATES ARMY TRAINING AND DOCTRINE COMMAND
FORT MONROE, VIRGINIA 23651**

DATA CONTROL NUMBER
Job No / Proj No



WJED
SEP 15 1980
DRMD

62 F SL 1
 Comp

MOS 62F SKILL 1

| COUNT1 | WORD1 | COUNT2 | MOS WORD LISTING/ASCENDING SEQUENT 02 | COUNT3 | WORD3 | COUNT4 | WORD4 | DATE | EC255 | 1817 | PAGE | 1 |
|--------|-------|--------|--|--------|-------------------|--------|------------------|------|-------|------|------|---|
| 2 | J | 1 | J L2-346 | 35 | - | 2 | J | | | | | |
| 2 | J | 1 | J L2-346 | 1 | N#1D41E D # G | 1 | E-Z | | | | | |
| 2 | J | 1 | N-F-N | 2 | G | 4 | | | | | | |
| 1 | #8 | 2 | G | 55 | J G | 1 | J G+ | | | | | |
| 13 | J | 1 | J ACCELERATE | 2 | J ACCELERATOR | 1 | J ACCESSORIES | | | | | |
| 2 | J | 1 | J ACCU- J | 1 | J ACIDS | 1 | J ACTIONS | | | | | |
| 1 | J | 1 | J ADJUSTED | 3 | J ADJUSTMENT | 4 | J ADMINISTRATION | | | | | |
| 1 | J | 1 | J AFTER | 6 | J AFTER-OPERATION | 1 | J AIR | | | | | |
| 4 | J | 1 | J ALLOWING | 1 | J ALIWAYS | 2 | J ALPHABET | | | | | |
| 2 | J | 47 | J AND | 2 | J AND/OR | 3 | J ANNOTATE | | | | | |
| 1 | J | 1 | J ANY | 1 | J ANGLE | 2 | J APPLICABLE | | | | | |
| 2 | J | 2 | J APPROXIMATELY | 1 | J ARCH | 1 | J AREA | | | | | |
| 2 | J | 1 | J ARMY | 5 | J ARCHIVE | 2 | J AS | | | | | |
| 5 | J | 2 | J ASSEMBLIES | 3 | J ASSEMBLY | 1 | J ASSIST | | | | | |
| 1 | J | 4 | J AT | 1 | J ATTACH | 6 | J ATTACHMENT | | | | | |
| 8 | J | 6 | J BACK | 5 | J BACKLASH | 1 | J BRAFFLE | | | | | |
| 2 | J | 1 | J BACKSE | 11 | J BBE | 4 | J BRACKET | | | | | |
| 6 | J | 1 | J BACKUP | 1 | J BACKLOG | 2 | J BRIDGE | | | | | |
| 2 | J | 1 | J BACKUP | 1 | J BACKLOG | 3 | J BRIDGE | | | | | |
| 2 | J | 1 | J BACKUP | 2 | J BACKLOGS | 1 | J BRIDGE | | | | | |
| 1 | J | 12 | J BACKUP | 2 | J BACKLOGS | 1 | J BRIDGE | | | | | |
| 2 | J | 1 | J BACKUP | 1 | J BACKLOGS | 2 | J BRIDGE | | | | | |
| 12 | J | 2 | J BACKUP | 1 | J BACKLOGS | 1 | J BRIDGE | | | | | |
| 21 | J | 3 | J BACKUP | 2 | J BACKLOGS | 1 | J BRIDGE | | | | | |
| 1 | J | 8 | J BACKUP | 1 | J BACKLOGS | 8 | J BRIDGE | | | | | |
| 1 | J | 1 | J BACKUP | 1 | J BACKLOGS | 1 | J BRIDGE | | | | | |
| 2 | J | 1 | J BACKUP | 1 | J BACKLOGS | 5 | J BRIDGE | | | | | |
| 1 | J | 1 | J BACKUP | 1 | J BACKLOGS | 1 | J BRIDGE | | | | | |
| 1 | J | 5 | J BACKUP | 1 | J BACKLOGS | 2 | J BRIDGE | | | | | |
| 1 | J | 1 | J BACKUP | 3 | J BACKLOGS | 1 | J BRIDGE | | | | | |
| 2 | J | 1 | J BACKUP | 1 | J BACKLOGS | 1 | J BRIDGE | | | | | |
| 5 | J | 1 | J BACKUP | 1 | J BACKLOGS | 1 | J BRIDGE | | | | | |
| 2 | J | 2 | J BACKUP | 2 | J BACKLOGS | 2 | J BRIDGE | | | | | |
| 2 | J | 1 | J BACKUP | 1 | J BACKLOGS | 4 | J BRIDGE | | | | | |
| 11 | J | 3 | J BACKUP | 2 | J BACKLOGS | 1 | J BRIDGE | | | | | |
| 7 | J | 1 | J BACKUP | 2 | J BACKLOGS | 2 | J BRIDGE | | | | | |
| 5 | J | 1 | J BACKUP | 1 | J BACKLOGS | 2 | J BRIDGE | | | | | |
| 2 | J | 1 | J BACKUP | 1 | J BACKLOGS | 1 | J BRIDGE | | | | | |
| 2 | J | 24 | J BACKUP | 10 | J BACKLOGS | 1 | J BRIDGE | | | | | |
| 3 | J | 1 | J BACKUP | 1 | J BACKLOGS | 9 | J BRIDGE | | | | | |
| 1 | J | 1 | J BACKUP | 3 | J BACKLOGS | 6 | J BRIDGE | | | | | |
| 3 | J | 1 | J BACKUP | 1 | J BACKLOGS | 1 | J BRIDGE | | | | | |
| 1 | J | 1 | J BACKUP | 4 | J BACKLOGS | 4 | J BRIDGE | | | | | |
| 1 | J | 2 | J BACKUP | 1 | J BACKLOGS | 3 | J BRIDGE | | | | | |
| 1 | J | 4 | J BACKUP | 1 | J BACKLOGS | 1 | J BRIDGE | | | | | |
| 1 | J | 11 | J BACKUP | 1 | J BACKLOGS | 1 | J BRIDGE | | | | | |
| 1 | J | 7 | J BACKUP | 1 | J BACKLOGS | 1 | J BRIDGE | | | | | |
| 1 | J | 1 | J BACKUP | 2 | J BACKLOGS | 1 | J BRIDGE | | | | | |
| 1 | J | 1 | J BACKUP | 1 | J BACKLOGS | 1 | J BRIDGE | | | | | |
| 5 | J | 1 | J BACKUP | 2 | J BACKLOGS | 1 | J BRIDGE | | | | | |
| 1 | J | 7 | J BACKUP | 1 | J BACKLOGS | 1 | J BRIDGE | | | | | |
| 2 | J | 2 | J BACKUP | 4 | J BACKLOGS | 1 | J BRIDGE | | | | | |

MCS WORD LISTING/ASCENDING SEQUENCE

COUNT1 WORD1

COUNT2 WORD2

COUNT3 WORD3

COUNT4 WORD4

| | | | | | | | |
|----|--------------------------|----|--------------------------|----|-----------------|----|-----------------------|
| 2 | J REF | 1 | J REFERENCE | 2 | J RELLECTRIC | 2 | J ELECTRICAL |
| 5 | J SELECTRC-HYDRAULIC | 1 | J SELECTRCHYDRAULIC | 1 | J RELLECTROLYTE | 1 | J GENITY |
| 2 | J REND | 4 | J RENGAGE | 1 | J RENAGED | 6 | J ENGINE |
| 4 | J RENGINEER | 1 | J RENTER | 21 | J RENQUIPMENT | 2 | J SEVENLY |
| 5 | J RENOVATORS | 1 | J REXTEND | 4 | J RENEXTENSION | 5 | J REN |
| 1 | J RENPAIRING | 2 | J RENPABLE | 11 | J RENPIS | 4 | J RENFIGURE |
| 1 | J RENFILL | 1 | J RENFIN | 2 | J RENFIT | 1 | J RENFITTINGS |
| 1 | J RENFLANGE | 1 | J RENFLANSED | 1 | J RENFLATTENED | 1 | J RENFLUID |
| 3 | J RENFOLLOWING | 3 | J RENFOLLOWAS | 1 | J RENFOOT | 8 | J RENFORM |
| 2 | J RENFORK | 1 | J RENFORKLIFT | 3 | J RENFORKS | 9 | J RENFORM |
| 8 | J RENFORWARD | 1 | J RENFORWARD-NEUTRAL-REV | 2 | J RENFORME | 1 | J RENFORCE-FALL |
| 1 | J RENFORM | 13 | J RENFORMAT | 1 | J RENFORME | 1 | J RENFUNCTIONS |
| 1 | J RENGALLONS | 1 | J RENGAUGING | 1 | J RENFORME | 1 | J RENGENERAL |
| 1 | J RENGENERATOR/ALTERNATO | 5 | J RENGIVEN | 2 | J RENFORME | 1 | J RENGRADUE |
| 3 | J RENGRIND | 1 | J RENGRIN | 1 | J RENFORME | 2 | J RENHAMMER |
| 1 | J RENHANDLE | 1 | J RENHANDLES | 5 | J RENFORME | 2 | J RENHARNISCHFEGER |
| 2 | J RENHEIGHT | 3 | J RENHEIGHT | 9 | J RENFORME | 1 | J RENHECK |
| 2 | J RENHOUSING | 1 | J RENHOUSINGS | 4 | J RENHYDRAULIC | 4 | J RENHIN |
| 3 | J RENIDENTIFIED | 2 | J RENHIF | 1 | J RENHYDRAULIC | 1 | J RENHIN- J |
| 13 | J RENIG | 1 | J RENHIN- JSTALLATION | 1 | J RENIGNITION | 1 | J RENHIN-LOAD |
| 1 | J RENINDI- J | 2 | J RENINDICATED | 1 | J RENIGNITION | 3 | J RENINDICATOR |
| 1 | J RENINLET | 1 | J RENINER | 11 | J RENIGNITION | 1 | J RENINSTAL- J |
| 12 | J RENINFALL | 1 | J RENINSTALL- J | 1 | J RENIGNITION | 2 | J RENINSTALLEC |
| 1 | J RENINSTRUC | 1 | J RENINSTRUCTION | 1 | J RENIGNITION | 1 | J RENINTERCHANGE |
| 7 | J RENINTERPRETING | 1 | J RENINTERPRETS | 5 | J RENIGNITION | 3 | J RENIT |
| 4 | J RENITERS | 1 | J RENITERS | 3 | J RENIGNITION | 1 | J RENIT |
| 1 | J RENIVD | 2 | J RENITS | 3 | J RENIGNITION | 4 | J RENIT |
| 1 | J RENLESS | 3 | J RENLEAD | 3 | J RENIGNITION | 3 | J RENIT |
| 1 | J RENLIFT | 1 | J RENLEVEL | 20 | J RENIGNITION | 1 | J RENITERS |
| 1 | J RENLIGHT | 4 | J RENLIFTED | 5 | J RENIGNITION | 1 | J RENLIFTING/LCHERING |
| 3 | J RENLISHED | 1 | J RENLINE | 3 | J RENIGNITION | 7 | J RENLITHAGE |
| 2 | J RENLOADING | 1 | J RENLIX | 3 | J RENIGNITION | 10 | J RENLIT |
| 1 | J RENLOCKED | 3 | J RENLOADS | 1 | J RENIGNITION | 2 | J RENLOCATION |
| 1 | J RENLOCKED | 1 | J RENLOADING | 1 | J RENIGNITION | 6 | J RENLOCKER |
| 1 | J RENLUBRICATION | 1 | J RENLOADING | 1 | J RENIGNITION | 1 | J RENLOSS |
| 3 | J RENMAINTAINING | 1 | J RENLOADS | 7 | J RENIGNITION | 1 | J RENMAIN |
| 2 | J RENMAINTAINED | 54 | J RENMAINTENANCE | 1 | J RENIGNITION | 4 | J RENMANAGEMENT |
| 2 | J RENMAINTAINED | 16 | J RENMANUAL | 4 | J RENIGNITION | 1 | J RENMANUFACTURER'S |
| 2 | J RENMAINTAINED | 1 | J RENMANUALS | 1 | J RENIGNITION | 1 | J RENMEASURE |
| 1 | J RENMAINTAINED | 14 | J RENMEASURES | 1 | J RENIGNITION | 3 | J RENMIDDLE |
| 1 | J RENMAINTAINED | 1 | J RENMISSION | 1 | J RENIGNITION | 13 | J RENMIBILE |
| 1 | J RENMAINTAINED | 1 | J RENMISOR | 2 | J RENIGNITION | 1 | J RENMIBILE |
| 12 | J RENMAINTAINED | 4 | J RENMOUNTING | 1 | J RENIGNITION | 3 | J RENMULTIMETER |
| 1 | J RENMAINTAINED | 2 | J RENNECESSARY | 1 | J RENIGNITION | 1 | J RENNEUTRALIZE |
| 1 | J RENMAINTAINED | 1 | J RENNECESSARY | 1 | J RENIGNITION | 4 | J RENOTE |
| 1 | J RENMAINTAINED | 2 | J RENNECESSARY | 1 | J RENIGNITION | 3 | J RENOT |
| 15 | J RENMAINTAINED | 1 | J RENNECESSARY | 1 | J RENIGNITION | 7 | J RENON |
| 4 | J RENMAINTAINED | 1 | J RENNECESSARY | 3 | J RENIGNITION | 1 | J RENOPERATED |
| 6 | J RENMAINTAINED | 2 | J RENNECESSARY | 3 | J RENIGNITION | 16 | J RENOPERATOR |
| 11 | J RENMAINTAINED | 2 | J RENNECESSARY | 2 | J RENIGNITION | 1 | J RENOPER |
| 1 | J RENMAINTAINED | 22 | J RENNECESSARY | 2 | J RENIGNITION | 4 | J RENOPER |

| COUNT1 WORD1 | COUNT2 WC | OS WORD LISTING/ASCENDING SEQUENCE | COUNT3 WORD3 | COUNT4 WORD4 |
|---------------------------|--------------------------|------------------------------------|--------------------------|--------------|
| 1 * J OVERRIDE | 8 * J OP | 2 * J OPAGE | 10 * J OPARA | |
| 5 * J OPARKED | 2 * J OPARKING | 2 * J OPART | 1 * J OPARTS | |
| 1 * J OPASSES | 4 * J OPEDAL | 2 * J OPEDALS | 7 * J OPERFORM | |
| 8 * J OPPERFORMANCE | 2 * J OPPERFORMED | 1 * J OPPERSONNEL | 1 * J OPICK | |
| 4 * J OPFILE | 9 * J OPIN | 1 * J OPING | 2 * J OPLACE | |
| 2 * J OPPLATE | 1 * J OPPLAY | 1 * J OPPLUG | 2 * J OPNEUMATIC | |
| 3 * J OPPOINT | 21 * J OPPOSITION | 1 * J OPPOSITE | 3 * J OPOWER | |
| 2 * J OPAPP | 1 * J OPRELOAD | 1 * J OPREPARATION | 3 * J OPREPAIRING | |
| 1 * J OPRESS | 3 * J OPRESSURE | 1 * J OPREVENT | 3 * J OPREVENTIVE | |
| 8 * J OPROCEDURES | 1 * J OPREFFICIENT | 3 * J OPREFFLLER | 2 * J OPROPERLY | |
| 1 * J OPROTUDE | 1 * J OPSI | 3 * J OPULL | 2 * J OPUMP | |
| 3 * J OPUSH | 3 * J OPULLIFIED | 3 * J OPURSE | 1 * J OPURSE/LOWER | |
| 3 * J OPURGE | 1 * J OPURTE | 2 * J OPUR- J | 1 * J OPUR- JIME | |
| 3 * J OPURCH | 1 * J OPURDING | 7 * J OPURF | 1 * J OPURSTYBLING | |
| 1 * J OPURCEPTACLE | 1 * J OPURCORD | 4 * J OPURVE | 1 * J OPURFER | |
| 15 * J OPURREFERENCE | 15 * J OPURREFERENCES | 1 * J OPURVEPRING | 1 * J OPURFLYTOR | |
| 6 * J OPURLEASE | 1 * J OPURLIEF | 1 * J OPURLIEVE | 2 * J OPURREMAINING | |
| 1 * J OPURLOVAL | 11 * J OPURREMOVE | 2 * J OPURMOVED | 5 * J OPURMOVING | |
| 1 * J OPURMETERS | 2 * J OPURREPLACE | 1 * J OPURREPLACED | 1 * J OPURREPORT | |
| 1 * J OPURQUICK | 3 * J OPURREQUIED | 3 * J OPURREQUIREMENTS | 1 * J OPURREQUIRING | |
| 3 * J OPURSERVICIR | 1 * J OPURRESPONSIBILITY | 4 * J OPURRETRACT | 1 * J OPURRETRACT- JING | |
| 1 * J OPURTRACTING | 2 * J OPURRETURN | 1 * J OPURREVERSING | 2 * J OPURREVOLVING | |
| 1 * J OPURTRIGGER | 3 * J OPURRIGHT | 4 * J OPURRIVETED | 1 * J OPURRUCO | |
| 1 * J OPURBULLIN | 3 * J OPURSCOPE | 1 * J OPURROTTATION | 2 * J OPURRULES | |
| 1 * J OPURSAFE | 9 * J OPURSAFETY | 1 * J OPURSAFE | 3 * J OPURSCHEMATICS | |
| 1 * J OPURSCREENS | 1 * J OPURSEAL | 6 * J OPURSEC | 1 * J OPURSECONDS | |
| 2 * J OPURSECTION | 1 * J OPURSECTIONS | 4 * J OPURSECURE | 1 * J OPURSELECTED | |
| 4 * J OPURSELECTOR | 1 * J OPURSEPARATE | 2 * J OPURSER- J | 2 * J OPURSERVICE | |
| 10 * J OPURSERVICEABILITY | 1 * J OPURSERVICEABLE | 11 * J OPURSTRUTICS | 1 * J OPURSER | |
| 1 * J OPURSHIP | 4 * J OPURSETS | 2 * J OPURSHAVE | 1 * J OPURSHIFT | |
| 2 * J OPURSHIPPER | 5 * J OPURSHOW | 1 * J OPURSHORTEN | 3 * J OPURSHOULD | |
| 5 * J OPURSHOVEL | 1 * J OPURSHOWN | 4 * J OPURSHOT OFF | 1 * J OPURSIDE | |
| 1 * J OPURSIDES | 1 * J OPURSHUCE | 1 * J OPURSLIUF | 1 * J OPURSLIDING | |
| 2 * J OPURSLING | 1 * J OPURSLIPPING | 2 * J OPURSLONLY | 1 * J OPURSMALL | |
| 1 * J OPURSMOOTH | 3 * J OPURSOCKET | 1 * J OPURSCLENCID | 1 * J OPURSCLENCIOS | |
| 1 * J OPURSPIN | 1 * J OPURSPANNER | 1 * J OPURSPECTAL | 12 * J OPURSPHICIC | |
| 1 * J OPURSPECIFICATIONS | 3 * J OPURSPECIFIED | 2 * J OPURSPED | 1 * J OPURSPRINE | |
| 1 * J OPURSPOTS | 2 * J OPURSPRECIUER | 3 * J OPURSPROCKET | 1 * J OPURSPOT | |
| 1 * J OPURSQUARE | 1 * J OPURSTABILITY | 7 * J OPURSTANDARDS | 1 * J OPURSTANDING | |
| 1 * J OPURSTANDS | 1 * J OPURSTART | 1 * J OPURSTARTED | 1 * J OPURSTARTING | |
| 2 * J OPURSTARTS | 1 * J OPURSTEERING | 1 * J OPURSTEPS | 1 * J OPURSTOCK | |
| 1 * J OPURSTUCKPILED | 2 * J OPURSTOP | 1 * J OPURSTOPPING | 1 * J OPURSTOPE | |
| 1 * J OPURSTORAGE | 1 * J OPURSTRAIGHT | 3 * J OPURSTEPPING | 1 * J OPURSTUACURSES | |
| 1 * J OPURSUFFICIENT | 4 * J OPURSUITABLE | 1 * J OPURSTEPLNER | 1 * J OPURSUPERSTRUCTURE | |
| 3 * J OPURSUPPLIES | 2 * J OPURSUPPLY | 4 * J OPURSUPPOT | 1 * J OPURSUPFACE | |
| 3 * J OPURSUSPENSION | 4 * J OPURSWING | 1 * J OPURSWINGING | 5 * J OPURSWITCH | |
| 1 * J OPURSWITCHES | 10 * J OPURSYSTEM | 2 * J OPURTAGLINE | 1 * J OPURTAKE | |
| 1 * J OPURTAPPING | 1 * J OPURTAUT | 2 * J OPURTEC | 1 * J OPURTECH- J | |
| 10 * J OPURTECHNICAL | 1 * J OPURTEAT | 1 * J OPURTEASION | 1 * J OPURTER- J | |
| 2 * J OPURTECHNICALS | 1 * J OPURTEARAIN | 4 * J OPURTEST | 2 * J OPURTESTER | |

| COUNT1 WORD1 | COUNT2 WC. | 105 WORD LISTING/ASCENDING SEQUENCE COUNT3 WORD3 | COUNT4 WORD4 | DATE 08259 1817 PAGE 4 |
|---------------------------|---------------------------|---|---------------------------|------------------------|
| 2 * J ATTESTING | 2 * J ATBAT | 62 * J ETHC | 2 * J ETHM | |
| 1 * J ATVILLE | 1 * J ATTHREADED | 1 * J ETHPROTLC | 4 * J ETHPIUGH | |
| 3 * J AYRU | 1 * J ATIGHT | 3 * J EIGHTEN | 2 * J ETIRED | |
| 1 * J STIRES | 21 * J ATM | 27 * J ETC | 8 * J ETCN | |
| 1 * J ATOML | 2 * J ATOP | 3 * J ETCHEAD | 1 * J ETRAIN | |
| 2 * J ATOMMISSION | 3 * J ATOSMITH- J | 24 * J ETRANSORTER | 2 * J ETRK | |
| 8 * J ATUCK | 1 * J ATUCKS | 1 * J ETRCFART | 2 * J ETRYPICAL | |
| 1 * J ATUNCORRECTED | 1 * J ATUNDCROSS | 3 * J EUNDER | 1 * J EUNITS | |
| 1 * J ATUNIVERSAL | 1 * J ATUNROLL | 1 * J EUNTIER | 2 * J EUNTEL | |
| 1 * J ATUP | 1 * J ATUPPER | 3 * J EUSE | 6 * J EUSTING | |
| 3 * J ATVALVE | 4 * J ATVEETICAL | 1 * J EVISUALLY | 1 * J EVCLTAGE | |
| 5 * J ATWOLLAHSELL | 1 * J ATWATCHING | 1 * J EWAYER | 5 * J EWATERPROOFING | |
| 1 * J ATWAX | 1 * J ATWEDGE | 1 * J EWIGHT | 3 * J EWEDDED | |
| 1 * J ATWELL | 1 * J ATWILT | 3 * J EWHEEL | 4 * J EWHEELS | |
| 4 * J ATWHEN | 1 * J ATWHILE | 1 * J EWI | 3 * J EWILL | |
| 3 * J ATWICH | 1 * J ATWINDER | 4 * J EWIPLE | 1 * J EWIRING | |
| 12 * J ATWITH | 2 * J ATWITHIN | 1 * J EWOCK | 1 * J EWKAP | |
| 1 * J ATWONCH | 1 * J ATWXXXVIII | 1 * J EYFOS | 1 * J EYKE | |
| 1 * J ATWOU | 1 * J ATW51-255-1033 | 2 * J E1 | 1 * J E1-HOUR | |
| 1 * J ATW1-1920-242-12 | 4 * J ATW61-1930-242-12 | 2 * J ATW610-3930-243-12 | 1 * J ATW61-1930-243-12-1 | |
| 4 * J ATW11 | 1 * J ATW61462 | 1 * J ATW61443 | 9 * J ATW62 | |
| 1 * J ATW12-14 | 1 * J ATW62-14 | 1 * J ATW62-22 | 1 * J ATW62-27 | |
| 1 * J ATW12-273 J L2-274 | 1 * J ATW62-274 | 1 * J ATW62-295 J L2-296 | 1 * J ATW62-307 | |
| 1 * J ATW12-317 J L2-318 | 1 * J ATW62-327 J L2-328 | 1 * J ATW62-343 J L2-344 | 1 * J ATW62-356 J L2-357 | |
| 1 * J ATW12-318 | 1 * J ATW62-3 | 1 * J ATW62-7 | 2 * J ATW62 | |
| 5 * J ATW190 | 1 * J ATW62305 | 17 * J ATW62414 | 2 * J ATW6243-1 | |
| 6 * J ATW1 | 1 * J ATW63-11 J L3-12 | 1 * J ATW63-2 | 1 * J ATW63-21 | |
| 1 * J ATW13-29 J L3-30 | 1 * J ATW63-33 J L3-31 | 1 * J ATW63-31 | 1 * J ATW63-35 J L3-37 | |
| 1 * J ATW13-33 J L3-39 | 6 * J ATW63-4 | 1 * J ATW63-7 | 1 * J ATW63-9 J L3-13 | |
| 5 * J ATW13-750 | 2 * J ATW6365-6 | 6 * J ATW64 | 1 * J ATW64-133 | |
| 1 * J ATW14-116 | 1 * J ATW64-145 | 2 * J ATW64-145 | 1 * J ATW64-166 | |
| 1 * J ATW14-218 | 2 * J ATW64-221 | 1 * J ATW64-224 | 3 * J ATW64-242 | |
| 1 * J ATW14-258 | 2 * J ATW64-259 | 1 * J ATW64-274 | 1 * J ATW64-74 | |
| 3 * J ATW15 | 1 * J ATW65-2610-294-10 | 1 * J ATW65-331B | 2 * J ATW65-3810-232-12 | |
| 3 * J ATW15-1810-232-12-1 | 12 * J ATW65-1610-288-12 | 3 * J ATW65-3810-289-12-1 | 7 * J ATW65-1910-269-12 | |
| 1 * J ATW15-1910-254-10 | 2 * J ATW65-1610-294-12-1 | 4 * J ATW65-447-274-12 | 6 * J ATW65-5420-210-12 | |
| 2 * J ATW15-5420-210-34 | 1 * J ATW65-725 | 1 * J ATW661-091-6650-F | 1 * J ATW661-091-6457-F | |
| 8 * J ATW16 | 2 * J ATW66 | 1 * J ATW66-1 | 1 * J ATW6612-051-9655-E | |
| 1 * J ATW1612-051-9658-F | 1 * J ATW6612-051-9660-E | 1 * J ATW6612-051-9661-F | 1 * J ATW6612-051-9664-F | |
| 2 * J ATW1612-051-9665-E | 1 * J ATW6612-051-9668-F | 1 * J ATW6621-051-9662-E | 1 * J ATW67 | |
| 293 A | 5 ABLE | 2 ABNORMAL | 14 ABOVE | |
| 1 AC- J | 3 ACCELERATE | 4 ACCELERATOR | 1 ACCEPT | |
| 1 ACCESS | 5 ACCESSORY | 1 ACCOMPLISHED | 1 ACCOMPLISHMENT | |
| 1 ACCOUNT- J | 1 ACCORDANCE | 7 ACCORDING | 1 ACCUMULATION | |
| 1 ACCURACY | 1 ACCURATE | 1 ACTION | 15 ACTIONS | |
| 1 AC- J | 3 ADAPTER | 6 ACC | 2 ADDITION | |
| 7 ADDITIONAL | 17 ADJUST | 8 ADJUSTED | 8 ADJUSTING | |
| 1 ADJUSTMENT | 3 ADJUSTMENTS | 16 ADMINISTRATION | 15 AFTER | |
| 3 AFTER-OPERATION | 4 AGAINST | 1 AGE | 1 ACED | |
| 1 AID | 3 AIR | 1 AL | 3 ALION | |

COUNT1 WORD1

1 ALIGN- J
 67 ALL
 1 ALSO
 851 AND
 2 ANTIPODE
 26 APPLICABLE
 1 APPROACHED
 2 APC
 8 ARM
 1 ARY
 1 ASSEM- J
 24 ASSEMBLY
 1 ASSESSMENT
 2 ASSESSING
 1 AUXILI- J
 1 AWAY
 30 BACK
 1 BACKWARD
 1 BACKWARDS
 6 BATTERIES
 9 BATTERY
 6 BEEN
 20 BELL
 1 BENT
 17 BETWEEN
 2 BIVE
 2 BODY
 1 BOJ
 2 BONES
 1 BOX
 4 BRACKET
 1 BRACKER
 4 BRING
 39 BRACKET
 1 BRITON
 1 CAGE
 1 CALCULATE
 1 CAP- J
 5 CAPSCREWS
 4 CAPTAGE
 1 CARTS
 1 CATED
 15 CAUTION
 15 CHANGE
 1 CHANGE
 2 CHARTS
 45 CHECKS
 8 CHECK
 14 CHINNT
 3 CLAM

COUNT2 WORD2

2 ALIGNMENT
 6 ALLOH
 7 ALWAYS
 13 AND/OR
 9 ANY
 4 APPLIED
 5 APPROPRIATE
 1 ARCH
 1 ARMS
 53 AS
 1 ASSEMBLE
 1 ASSIGNED
 62 AT
 19 ATTACHMENT
 5 AUXILIARY
 1 AXIS
 1 BACK- J
 1 BACKWARDS
 6 BATH
 8 BATTERY
 1 BEARINGS
 7 BEFORE
 6 BELLOWRAK
 1 BESIDE
 1 BEYOND
 18 BLOCK
 12 BOLT
 126 BLOM
 1 BOLT- J
 2 BRACE
 65 BRAKE
 1 BREAKS
 18 BACKEN
 1 BUILD
 47 BY
 16 CAB
 8 CAN
 1 CAPABLE
 1 CAPE
 21 CARRIER
 4 CAST
 5 CATALK
 17 CENTER
 1 CHANGED
 1 CHARGED
 49 CHECK
 1 CHIPPED
 2 CHUKE
 3 CIRCUITS
 8 CLANDING

105 WORD LISTING/ASCENDING SEQUENCE

COUNT3 WORD3

4 ALINED
 10 ALLOWING
 15 AMERICAN
 9 ANGLE
 1 APART
 21 APPLY
 2 APPROX- J
 53 ARE
 27 ARMY
 1 AS- J
 1 ASSEMBLIES
 3 ASSULT
 1 ATING
 1 ATTENTION
 1 AVCID
 2 AXLE
 17 BACKHOE
 2 BEEFE
 4 BINK
 156 RE
 2 RECLISE
 6 REFINE-OPERATION
 3 RELEW
 1 BEST
 33 BE-FIND-1
 9 FLOCKS
 1 EDLTD
 9 BOOT
 18 BOIM
 5 BRACES
 4 BRAKEBAND
 23 RIDGE
 1 BRUSH
 2 BULGES
 125 C
 62 CABLE
 1 CANE
 20 CAPACITY
 1 CARE- J
 4 CAREY
 1 CASTING
 3 CAUSE
 3 CERTAIN
 85 CHAP
 6 CHARGING
 1 CHECKING
 1 CHIPS
 1 CHUDES
 1 CIRCULATE
 2 CLUMPS

DATE 80259 1617 PAGE 5

COUNT4 WORD4

1 ALKALI
 1 ALONG
 19 AA
 7 ANNOTATE
 1 APPENDIX
 4 APPROACH
 2 APPROXIMATELY
 13 AREA
 30 AROUND
 83 ASSULT
 1 ASSEMBLING
 7 STRICTANT
 5 ATTACH
 1 AUTOMATICALLY
 1 AWAITING
 132 B
 1 PACKING
 2 CALANCE
 2 PAGE
 1 EFF- J
 1 BECOME
 2 BEING
 3 FLITS
 2 FEWER
 1 BIGGER
 1 FLY
 14 BOLTS
 10 EGOTS
 5 BOTTOM
 1 ETOING
 11 BEAKES
 45 BRIDGE/FERRY
 1 PURPLE
 1 BURNT
 1 EKS
 10 GILES
 13 CAP
 4 CAPSCKEN
 3 CAREFULLY
 1 CASE
 1 CAP- J
 3 CAUSING
 11 CHAIN
 1 CHARTER
 10 CHART
 1 CHECKLIST
 2 CHAIN
 1 CH- J
 3 CLAM- J
 21 CLAMSHLL

MS WORD LISTING/ASCENDING SEQUENCE

COUNT1 WORD1

COUNT2 WORD2

COUNT3 WORD3

COUNT4 WORD4

7 CLEAN
6 CLIP
9 CLIPS
5 CLOSING
1 CLM- J
1 COMMUNICATING
4 COMPLETELY
1 COMPUTE
5 CONFIGURATION
1 CONNECTING
3 CONSTRUCT
1 CONTAINING
1 CONTAINED
2 CONTROLLED
2 DECLAR
1 CLOSED
1 CORRECTLY
1 COUNTER-CLOCKWISE
1 COVER
25 CRAN-SHOVEL
22 CRANKS
1 CROSS
4 CUNIC
1 CUR
14 CYLINDER
89 C
1 DAMAGING
5 DEAD
2 DEFENSE
4 DEFICIENCY
4 DEFLECT
2 DEFLECTED
2 DEPRESSIO
16 DESIRED
1 DEVELOP
5 DIAMETER
2 DIB
47 DIPPER
1 DIRECTION
1 DIS- J
23 DISCONNECT
2 DISTRIBUTION
7 DISPS
1 DOUBLE-LOCK
6 DRAGLINE
1 DRAFTING
1 DRIVING
3 DRUMS
19 DUMP
1 DUNE

1 CLEANED
1 CLEARS
1 CLOCKWISE
33 CLUTCH
1 CLUME
3 COMON
1 COMPO- J
9 COM- J
1 CONFLICT
14 CONNECTIONS
1 CONSTRUCTED
1 CONVENTS
10 CONTINUITY
14 CONTROLS
1 COOLING
1 COORDING
16 CORRESPONDENCE
1 COUPLING
4 CRACKED
17 CRANES
2 CRIMPED
23 CROWD
1 CUIST
6 CUTTERS
3 CYLINDERS
1 DAV- J
7 DATA
1 DEAD- J
1 DEFECT
1 DEFINITE
1 DENTED
2 DEPOSIT
7 DEPTH
1 DEFENT
11 DEVICE
12 DIESEL
4 DIGGING
1 DIPPING
1 DIRECTIONAL
2 DIS-SEMBLE
2 DIS-TRAGE
3 DIVIDE
5 DONT
13 DOWN
6 DRAIN
31 DRIVE
3 DRUP
2 DRUM
2 DUMPED
8 DURING

2 CLEANER
4 CLEVIS
14 CLOSE
1 CONNECT
16 COMMON
10 COMPUTE
3 COMPONENT
11 CONDITION
22 CONNECT
1 CONNECTORS
24 CONSTRUCTION
1 CONTINU- J
3 CONTINUOUSLY
3 CONVERTING
1 COMPLETELY
46 CORRECT
1 CORROSION
1 CORRUPT
5 CRACKS
3 CRANK
5 CRASHING
1 CRAWLED
2 CUR- J
2 CY- J
63 C
15 CAYAGE
1 CC
9 COLD-END
2 CORRECT
1 REFLECTION
2 CORNS
4 DEPOSITED
14 CORPICK
23 DETERMINE
2 DI- J
6 DIFFERENT
1 DIP- J
2 DIPSTICK
4 DIRECTLY
2 DIS-SEMBLY
1 DISTANCE
1 DVAE
3 DCCR
6 DRAS
1 DRAINAGE
1 DRIVEN
2 DRIPPING
3 DUCT
8 DUMPING
3 DURING-OPERATION

1 CLEANING
2 CLIP
1 CLOSED
2 COAT
1 COMMUNICATE
13 COMPLETED
3 COMPONENTS
49 CONDITIONS
2 CONNECTED
1 CONSOLIDATING
6 CONSUMPTION
3 CONTINU
59 CONTACT
1 COOL
10 COE- J
2 CORRECTIVE
22 COTTO
2 COTTING
117 CRANE
2 CRANKING
1 CRITICAL
44 CU
4 CLT
2 CYCLE
1 CYLING
1 DAMAGED
2 DE- J
3 DECK
32 DEFICIENCIES
1 DEFICE
2 DEFICIENT
14 DEPRESS
2 DESIGNATED
2 DETERMINED
1 DIME- J
2 DIFFERENTIAL
1 DIF- JPER
29 DIRECT
1 DIRE
2 DISCARD
1 DISTINGUISH
8 DO
1 DOUBLE
2 DRAGGING
1 DRAINS
14 DRIVER
142 DRUM
1 DUE
1 DUNES
1 DURING-OPERATIONAL

MOS WORD LISTING/ASCENDING SEQUENCE
COUNT3 WORD3

COUNT1 WORD1

COUNT2 WORD2

1 DUTIES
4 DWH
2 DASHING
1 FIGHT
15 ELECTRO-HYDRAULIC
2 FIVE-J
3 FIVE
54 ENGINE
2 ENU
1 EQUAL
1 EQUIVALENT
1 EQUITY
1 EQUIPMENT
1 EQUIVALENT
11 EQUIVATIONS
1 EQUIVISED
22 EQUIVISON
2 ENY
1 ENYING
2 ENY
1 ENYBY
2 ENYD
7 ENYS
2 ENYER
4 ENYAL
2 ENYST
1 ENYTING
1 ENYGE
17 ENY
24 ENY
52 ENY
45 ENY
2 FORWARD-NEUTRAL-REVERSE
1 ENYME
1 ENY-FALL
51 ENYAT
2 ENYATION
1 ENY
1 GALLONS
1 GARDING
1 GENERATOR/ALTERNATOR
2 GARDUALLY
4 GC
3 GEM
1 GRAVITY
27 GROUND
1 GUIDING
1 H LERAY
2 H TO

4 DUTY
6 DARTH
1 DASY
3 EITHER
1 ELECTROHYDRAULIC
1 ENCOUNTERED
1 ENDSIZE
12 ENGINEER
7 ENOUGH
3 ENOOLS
1 ENOAL
1 ESTABLISH
2 ENY-J
2 EXCAVAT-J
1 EXCEED
7 EXTEND
2 EXTINGUISHER
36 F
4 FAIR-LEAD
19 FEET
2 FEW
2 FICED
21 FIGURE
4 FILTER
2 FIRE
1 FIRSHAND
6 FITTINGS
4 FLANGED
1 FLOWING
1 FOLLOW
1 FOOT-POUNDS
9 FORKLIFT
10 FORMANCE
6 FOUR
1 FRAY
1 FREE-FALLING
18 FUEL
2 FUNCTIONAL
2 GAUGE
1 GONIZATIONAL
1 GEAR
1 GENTLY
47 GIVEN
6 GUGGLES
1 GRADUAL
6 GREASE
1 GROUP
2 GUY
9 HALVES
1 HANDBOOK

1 G2
4 GAC
2 GBE
3 ELECTRIC
2 EM
32 END
6 ENLAGE
1 ENGINES
4 ENOEP
1 ENOIP-J
1 EPITE
1 ENOER
2 ENOELY
1 EXCAVATED
3 EXCESS
3 EXTENDED
2 EXTRA
1 EXTRACTE
1 FAIRING
5 FEETLE
1 FECTIONS
131 FIG
6 FILL
1 FILTERS
1 FIRM
5 FIT
1 FIVE
2 FLAT
1 FLUCTUATING
11 FOLLOWING
151 FOR
30 FORMED
1 FORMED-J
5 FRAYED
1 FRESH
7 FULL
1 FUNCTIONS
1 GATED
16 GENTRY
39 GENERAL
1 GINA
1 GLOSSARY
6 GOOD
1 GRADUALLY
1 GREATER
1 GUIDE
11 F
1 HAM-J
2 HANDLE

60 E
4 EACILY
1 ECCENTRIC
9 ELECTRICAL
1 EMERGENCY
1 ENDING
2 ENGAGED
17 ENGR
1 ENVIRONMENTAL
54 EQUIPMENT
1 EROR
1 ERY
1 EXAMINE
1 EXCAVATORA
2 EXCESSIVELY
2 EXTENDING
1 EXTREME
1 EXTE
2 FALLING
3 FEE
1 FICIENT
1 FIGH-J
2 FILLED
2 FIN
1 FINELY
1 FIM-J
1 FIVE-PART
1 FLATTENED
7 FLUID
13 FOLLOWS
1 FOREIGN
1 FORMMETER
27 FORWARD
1 FORM-PART
7 FREE
62 FROM
6 FULLY
26 G
3 GAGES
1 GAGES
2 GENERATING
3 GING
5 GLOVES
1 GLOVE
5 GROOVE
1 GUIDELINES
4 HALF
20 HAMMER
1 HANDLES

COUNT1 WORD1

COUNT2 WORD2

105 WORD LISTING/ASCENDING SEQUENCE
COUNT3 WORD3

COUNT4 WORD4

5 HANDLING
 1 HANGRESS
 6 HAVE
 11 HEIGHT
 2 HC
 7 HCLD
 1 HCLDOW
 1 HCLM
 16 HOUSING
 9 HYD
 15 I
 7 IDENTIFIED
 54 IE
 1 ILLUSTRATED
 1 INCARC
 7 INDICATED
 1 INDIVIDUAL
 7 INHER
 1 INJECTING
 6 INSPECTED
 8 INSTALLED
 1 INSTALRN
 1 INSTRE
 2 INTERFERENCE
 17 INTC
 1 ITEMS
 1 IZMIGNAL
 1 JOINT
 4 K
 1 KINAC
 3 L
 3 LAND
 2 LAYCE
 16 LEAK
 4 LEAKS
 14 LEFT
 3 LEF
 142 LEFTS
 26 LISTING
 1 LIMITING
 1 LINK
 1 LIPE
 2 LIX
 6 LLOYD
 1 LOCALIZED
 14 LOCK
 1 LOCKNITS
 9 LOCKRICK
 4 LOCKSTOOTHALLY
 9 LQSE

1 HARD- J
 3 HARNOSSES
 1 HAZARD
 1 HELD
 1 HUE
 1 HOLD- JIAG
 25 HOOK
 6 HOSE
 4 HOUSINGS
 1 HYDRAULIC
 1 I-BELLY
 1 IDENTIFY
 4 IGNITION
 1 IMPORTANT
 7 INCH
 1 INDICATES
 1 INFLECTION
 1 IMPERABLE
 1 INSTALLION
 2 INSPECTION
 1 INSTALLIN
 3 INSTUMENTS
 3 INTERCHANGE
 4 INTERPRET
 99 IC
 17 ITS
 6 J
 1 JCLINTS
 11 KEEP
 4 KIT
 2 L/2
 1 LARGE
 1 LAYING
 1 LEAK
 1 LEAM
 6 LENGTH
 19 LEVEL
 10 LEVERS
 3 LIGHT
 2 LINDER
 13 LINKAGE
 4 LIST
 27 LC
 1 LOADER
 1 LOCATE
 1 LOCK- J
 3 LOCKWASHER
 1 LOI
 1 LQDM
 1 LQSELY

2 HODDISE
 6 HORNICHEGER
 1 HEAT
 9 HIGH
 57 HOIST
 10 HOLDING
 1 HOOKS
 3 HOOPS
 30 HULL
 49 HYDRAULIC
 25 IAA
 1 IDENTITY
 2 II
 4 IMPROVED
 18 INCHES
 2 INDICATIONS
 6 INC
 9 INPUT
 4 INSIDE
 61 INSTALL
 7 INSTALLING
 2 INSULATION
 1 INTERDEPENDENT
 17 INDIFFERENT
 40 IT
 1 ITY
 5 JACK
 2 JUST
 2 KEEPING
 1 KNOWLEDGE
 1 LACH- J
 1 LATION
 13 LB
 1 LEAK- J
 6 LEAST
 2 LENGTHEN
 1 LEVELING
 49 LEFT
 1 LII
 41 LINE
 1 LINKS
 22 LISTED
 56 LOAD
 23 LOADING
 16 LOCATED
 2 LOCKED
 4 LOCKWASHERS
 2 LON- J
 5 LOOP
 4 LOOSEN

1 HARNICHEGER
 6 HAS
 5 PEEL
 1 HIGHER
 2 HOISTING
 6 HOLES
 4 HORIZONTAL
 1 HOUS- J
 1 HYDRAULIC
 2 HYDROMETER
 1 IDENTI- J
 2 IDLE
 17 III
 223 IN
 4 INCREASED
 7 INDICATOR
 2 INLET
 9 INJECT
 30 IMPROCT
 9 INSTALLATION
 6 INSTRUCTION
 3 INSURE
 1 INTERFERE
 1 INTERVENING
 10 ITEM
 1 IV
 2 JIB
 1 JUSTED
 4 KEY
 1 KEY
 6 LASSING
 1 LAY
 6 LEAD
 6 LEAKAGE
 3 LEAVING
 4 LEES
 1 LEVELS
 14 LEFTFO
 1 LIMITA- J
 14 LINES
 2 LIP
 4 LIVE
 4 LOAD-CENTER
 9 LOADS
 3 LOCATION
 8 LOCKNUT
 1 LOCKWIPE
 11 LONG
 1 LOOPS
 3 LOOSENING

COUNT1 WORD1

COUNT2 WORD2

1000 WORD LISTING/ASCENDING SEQUENCE
COUNT3 WORD3

DATE 80259 1817 PAGE 9
COUNT4 WORD4

1 LOSS
2 LOWERING
2 LSA
1 LUBRICANTS
11 LUBRICATION
1 LUST
1 LUT
1 LUTE
6 L. INTAINING
2 LUKING
1 LUKTAINS
105 M. JUAL
1 M. J
2 M. KOD
1 MACH
4 MATERIALS
15 MAY
75 M. JUPES
2 M. JUTAI
1 M. JUT
1 M. JUT INT
5 M. JUTUM
2 M. JUTUS
1 M. JUT-11031
2 M. JUTLE
18 M. JUTLE
1 M. JUTM
3 M. JUTUS
3 M. JUT
37 M. JUT
1 M. JUT
2 M. JUTIONS
1 M. JUTS
5 M. JUT
4 M. JUTROGEN
2 M. JUT
10 M. JUTED
2 M. JUTL
8 M. JUT
1 M. JUTIVE
1 M. JUTFCTIONS
25 M. JUT
1 M. JUT- J
1 M. JUTC
3 M. JUTATED
16 M. JUTATIONS
6 M. JUTATE
1 M. JUT- JIZATICML
1 M. JUTED
8 M. JUTL

9 LCM
1 LSL
3 LSS
3 LUBRICATE
3 LUG
3 LX
5 M
7 MAIN
156 MAINTENANCE
6 MALE
23 MANAGEMENT
1 MANUALLY
1 MARLES
4 MARKS
2 MATE
1 MATIC
1 MANS
17 MECHANIC'S
1 MEET
1 METE
4 MIL-S-11031
1 MINIMUM
1 MISS- J
77 MOBILE
1 MON
6 MOST
84 MOUNTED
9 MOVE
2 MULTIMETER
1 MUG
1 MUG- J
1 MUGD
9 NEUTRAL
2 NEXT
8 NO
2 NORMLL
1 NOTICED
55 NUMBER
2 NUTS
1 OESERVED
1 OBTAIN
214 ON
1 OP- JENTORS
4 OPER- J
30 OPERATING
1 OPERATIONS
101 OR
75 ORGANIZATIONAL
14 OUT
1 OUTFRM. FT

40 LOWER
2 LS2
3 LSG
2 LUBRICATED
3 LUGS
1 LT
36 MAJ
1 MAINTAIN
1 MAK- J
10 MALEFUNCTION
3 MANEUVER
14 MANEUVERS
11 MARINE
4 MARK
2 MATELY
1 MATTER
2 MEASURE
2 MECHANICALLY
2 MEN
1 MICLIP
1 MIN- JUTES
2 MINUS
2 MISSING
80 MODEL
2 MONITOR
2 MOTION
1 MOUNTING
4 MOVEMENT
1 MULTIPLY
1 MALS
1 NEGOS- J2-314 J L2-305
2 NEGROD
3 NEUTRALIZE
1 NICAL
1 NOISE
41 NOT
1 NOTING
1 NUMBERED
2 O
1 OBSTACLES
278 OF
20 ONE
18 OPEN
3 OPER- JUTICN
51 OPERATION
95 OPERATOR
1 OP- J
2 ORIGINAL
1 OUT-OF-ROUND
7 OUTLET

6 LCMRED
2 LS2
1 LUBRICANT
1 LUBRICATING
3 LV
1 LG-FCOT
7 MACHINE
1 MAINTAINED
25 MAKE
1 MALLET
1 MANEUVERS
1 MANUVER
3 MARK
11 MARKED
4 MATERIAL
2 MAXIMUM
2 MEASURED
1 MEDIATELY
1 MEE
1 MIDDLE
1 MINT- J
2 MINUTE
3 MISSION
12 MODELS
1 MONITORED
4 MOTOR
1 MOUNTINGS
2 MOVING
1 MUM
1 MATURE
18 NECESSARY
1 NEATE
3 NEVER
2 NINE
1 NOISES
78 NOSE
4 NOW
1 NUMBERS
1 ON- J
1 OBSTRUCT- JTIENS
22 OFF
5 ONLY
2 OPENED
7 OPERATE
1 OPERATIONAL
54 OPERATOR'S
9 OPER
12 OTHER
1 OUT-BOARD
6 OUTPUT

COUNT1 WORD1

COUNT2 WORD2 WORD LISTING/ASCENDING SEQUENCE
COUNT3 WORD3

DATE 80259 1817 PAGE 10
COUNT4 WORD4

7 OUTRIGGER
14 OVEN
1 OVERTAKING
1 OVERTAKE
3 OVERTHEADED
1 OVERTURN
15 OVERTURNING
1 OVERTURN
1 OVERTURN J
2 OVERTURNS
2 OVERTURNIT
2 OVERTURNING
7 OVERTURN
1 OVERTURN
37 PLACE
3 PLACES
2 PLACES
1 PLACE J
1 PLACE
2 PLATE-JOINT
1 PLATE
28 PLATE
1 UNDETERMINED
22 PLATING
1 PLATING
1 PLATEFULLY
6 PLATING
2 PLATING
11 PLATE
1 PLATE
2 PLATE
2 PLATE
4 QUALIFIED
1 PLATE
1 PLATE
1 PLATE
1 PLATE
7 PLATES
65 PLATE
2 PLATE
1 RECTIFIER
1 RECTIFIER
1 RECTIFIER
67 REPLY
1 REPLY
1 REPLY
6 REPLY
4 REPLY
2 REPLY
9 REPLY
5 REPLY

11 OUTRIGGERS
1 OVER-JUMP
2 OVERSIDE
1 OVERTAKE
1 OVERTAKE
2 OVERTAKE
15 OVERTAKE
1 OVERTAKE
1 OVERTAKE
1 OVERTAKE
57 OVERTAKE
5 OVERTAKE
46 OVERTAKE
22 OVERTAKE
2 OVERTAKE
3 OVERTAKE
1 OVERTAKE
32 OVERTAKE
4 OVERTAKE
33 OVERTAKE
1 OVERTAKE
1 OVERTAKE
1 OVERTAKE
10 OVERTAKE
1 OVERTAKE
1 OVERTAKE
26 OVERTAKE
1 OVERTAKE
5 OVERTAKE
1 OVERTAKE
1 OVERTAKE
2 OVERTAKE
29 OVERTAKE
8 OVERTAKE
5 OVERTAKE
2 OVERTAKE
1 OVERTAKE
2 OVERTAKE
3 OVERTAKE
50 OVERTAKE
5 OVERTAKE
7 OVERTAKE
1 OVERTAKE
1 OVERTAKE
3 OVERTAKE
10 OVERTAKE
20 OVERTAKE

1 OUTRIGGING
1 OVERCOME
118 P
1 PAIRER
4 PANEL
3 PAPER
1 PARTICULAR
1 PAST
55 PEDAL
3 PER
74 PERFORMANCE
2 PERMIT
1 PILOT
4 PITCH
1 PLANETARY
5 PLUS
9 PNEUMATIC
2 POINTER
3 PISTON-J
7 POSITIONING
1 FOUND
2 PER-J
2 PREPARATION
4 PREP
10 PREVENT
2 PREP
11 PREP
1 PRETRUCK
40 FULL
15 PUMP
26 PUSH
1 PYLON
2 QUIREMENT
4 RADIATOR
4 RADIATOR
1 RATE
45 REACH
4 READING
1 RECEIPTICLE
11 RECORD
8 RECOVER
3 RECOVER
47 REFERENCES
28 RELEASE
1 RELIEVE
6 REMOVAL
1 RENT
26 REPLACE
3 REQUEST
13 RESERVOIR

5 OUTSIDE
1 OVERHEAD
4 PACKING
4 PALLET
2 PALLETS
22 PARKED
9 PARTS
1 PAWL
13 PECCALS
11 PER-J
26 PERFORMED
5 PERSONNEL
36 PIN
1 PITCHING
9 PLATE
1 PLUGS
1 PNEUMATIC
4 POINTS
1 POINT-JAS
1 POSITIONING
5 POWER
2 PRECATIONS
5 PREPARE
1 PREPARED
12 PREVENTIVE
49 PROCEDURES
7 PROPELLER
1 PRY
2 PULLED
3 PUMPS
1 PUMP-J
1 QUALI-J
1
6 RAGS
27 RAISE/LOWER
1 RATING
3 REACHED
1 REALIGNING
1 RECOMMENDED
2 RECT
2 REDUCE
1 REFINING
1 REFINERS
1 RELEASED
1 REMAIN
76 REMOVE
3 REPAIR
4 REPLACED
13 RECEIVED
1 RECEIVED

WORDS WORD LISTING/ASCENDING SEQUENCE

COUNT1 WORD1

COUNT2 WORD2

COUNT3 WORD3

COUNT4 WORD4

| | | | |
|----------------|------------------|---------------------|------------------|
| 1 RESIDUAL | 1 RESPECTIVE | 3 RESPONSIBILITY | 4 RESPONSIBLE |
| 1 REST | 6 RESTING | 1 RESTORE | 1 RESTRICT- J |
| 1 RESULTS | 3 RETAINER | 1 RETAINING | 7 RETRACT |
| 1 REACTION | 4 RETURN | 1 RETURNED | 8 REVERSE |
| 2 REVERSING | 7 REVOLVING | 1 RIG- J | 9 RIGGING |
| 4 RIGHT | 1 RING | 2 RISE | 10 RIVETED |
| 1 RIVAL | 43 ROD | 4 ROBO | 2 ROLLER |
| 2 ROOM | 32 ROPE | 1 ROPES | 1 ROTATE |
| 2 ROTATION | 13 ROUGH | 1 ROW | 11 RPM |
| 1 RULE | 16 RULES | 1 RUN | 3 RUNNING |
| 1 RUST | 1 RUF- J | 4 SAFE | 12 SAFETY |
| 1 S-LT | 6 SAGE | 1 SAND | 1 SARY |
| 2 SCHEMATIC | 17 SCHEMATICS | 1 SCARING | 1 SCREWED |
| 1 SCREWHEADS | 3 SCREWS | 3 SEAL | 6 SEALANT |
| 3 SEALS | 1 SEATED | 40 SEC | 2 SEC- J |
| 2 SECOND | 1 SECONDARY | 1 SECONDS | 4 SECTION |
| 8 SECTIONS | 31 SECURE | 3 SECURELY | 8 SECURING |
| 4 SEF | 1 SELECT | 1 SELECTED | 7 SELECTOR |
| 1 SEHIMATE | 7 SEQUENCE | 1 SEQUENCES | 1 SEM- J |
| 1 SERICS | 11 SERVICE | 9 SERVICEABILITY | 43 SERVICES |
| 1 SERVIR | 34 SET | 1 SETTING | 31 SHAFT |
| 1 SHIFTS | 34 SHEAVE | 2 SHEAVES | 3 SHELL |
| 5 SHIFT | 1 SHIFTING | 1 SHIPMENT | 3 SHIPPER |
| 1 SHIRT | 1 SHOCK | 17 SHIP | 1 SHIPYEN |
| 19 SHOULD | 22 SHOVEL | 2 SHOW | 4 SHOWA |
| 3 SHUT | 6 SHUTOFF | 1 SHUTTERS | 1 SHUTTLE |
| 25 SIRE | 2 SIDES | 1 SIG- J | 6 SIGNALS |
| 2 SIMUL- J | 2 SIMULATED | 1 SIMULTANE- JOUSLY | 4 SIMULTANEOUSLY |
| 1 SIMBLE | 1 SINGLE-PALLET | 1 SINGLE-PART | 1 SISTANT |
| 5 SITS | 1 SITION | 1 SITUATION | 3 SIX |
| 6 SIZE | 1 SIZES | 1 SKID | 7 SLACK |
| 1 SLAM | 2 SLAVE | 7 SLAVING | 3 SLEAVE |
| 1 SLEEVES | 1 SLIDING | 10 SLIGHTLY | 3 SLING |
| 1 SLINGS | 2 SLIP | 3 SLIPPING | 1 SLITS |
| 13 SLOWLY | 5 SMALL | 1 SMALLEST | 3 SMOOTH |
| 1 SMOF | 1 SMARKING | 24 SO | 10 SOCKEY |
| 2 SMOFT | 1 SOLDIER'S | 1 SOLDIERS | 7 SOLLECID |
| 2 SOLENOIDS | 1 SOLVENT | 1 SOCM | 2 SPACE |
| 5 SPACED | 4 SPACER | 3 SPACING | 2 SPANER |
| 1 SPECIF- J | 2 SPECIAL | 59 SPECIFIC | 1 SPECIFICA- J |
| 4 SPECIFICALLY | 4 SPECIFICATIONS | 4 SPECIFIED | 13 SPEED |
| 1 SREDFD | 1 SPLICE | 3 SPLINES | 1 SPLIT |
| 3 SPURL | 3 SPOT | 1 SPOTED | 1 SPOTTING |
| 4 SPREADER | 6 SPROCKET | 19 SOT | 2 SQUARE |
| 3 SPURFELY | 1 SPUNFELY | 1 STABILITY | 6 STABILIZE |
| 2 STICK | 2 STACKED | 25 STAND | 1 STANDADS |
| 1 STANDARD | 42 STANDARDS | 1 ST. NOS | 9 START |
| 2 STARTED | 4 STARTER | 18 STARTING | 2 STARTS |
| 1 STATED | 1 STEADY | 6 STEERING | 1 STEP |
| 5 STEPS | 7 STICK | 1 STOCK | 5 STOCKPILE |

COUNT1 WORD1

COUNT2 WC

CS WORD LISTING/ASCENDING SEQUENCE

COUNT3 WORD3

COUNT4 WORD4

DATE 80259 1817 PAGE

12

10 STOP
 1 STOPPED
 1 STOPPER
 1 STOPPER
 1 STOPPER
 1 STOPPER-JTEM
 1 STOP-J
 1 STOP-TASKS
 2 STOP-STRUC-J
 26 STOP-PT
 2 STOP-PTD
 1 STOP-PTD
 31 SWITCH
 3 SWALE
 2 SWALGATE
 1 SWANKING
 4 SWANK
 4 SWAP
 4 SWAP-PTURE
 7 SWAP-J
 8 SWAP-PTURE
 1 TESTED
 13 THAL
 4 THAL
 7 THAL
 1 THAL
 1 THAL-PART
 3 THROUGHOUT
 4 THAL
 9 THALMEN
 1 THAL
 1 THAL
 3 THAL
 299 TH
 1 THAL
 2 THAL
 5 THAL
 5 THAL
 6 THAL-MISSION
 4 THAL-PORT
 2 THAL
 1 THAL
 77 THAL
 21 THAL
 1 THAL
 2 THAL-WHEEL
 16 THAL
 16 THAL
 1 UNIVERSAL
 1 UNACCE
 1 UNSERVICE-JABLE

1 STOP-J
 1 STORAGE
 1 STRAP
 1 STRUCTURE
 1 SUBSYSTEM
 1 SUFFICIENT
 1 SUPPLIES
 6 SUPERSTRUCTURE
 11 SUP
 7 SUSPENSION
 54 SWING
 8 SWITCHES
 1 TACKLE
 1 TAINED
 25 TANKS
 174 TASK
 46 TECHNICAL
 1 TEN
 1 TEN-JRAIN
 1 TERS
 7 TESTER
 1143 THE
 2 THERE
 1 THICKNESS
 2 THINDED
 1 THIN-WAY
 45 THRU
 2 TIERED
 1 TIGHTENED
 16 TILT
 2 TINGITY
 6 TIRE
 534 TO
 101 TOM
 21 TOP
 3 TORQUED
 2 TRACK
 2 TRANSMIT-J
 65 TRANSPORTER
 2 TRIES
 4 TROLS
 2 TRUCKS
 1 TURNED
 1 TWIST
 1 TYPE
 4 U-BOLTS
 4 UNIMPROVED
 1 UNLOADING
 7 UNROLL
 30 UNTIL

3 STOPPED
 5 STORAGE
 1 STRAPS
 1 SUBCOURSE
 1 SUCH
 5 SUIT-J
 3 SUP-J
 1 SUPPLIES
 8 SURFACE
 13 SAC
 7 SWINGING
 35 SYSTEM
 1 TAG
 3 TAKE
 1 TANCE
 3 TASKS
 4 TEE
 3 TENSION
 1 TERNAL
 62 TEST
 4 TESTING
 4 THEIR
 1 THEREFORE
 2 THAL
 3 THAL
 9 THAL
 4 THAL
 1 TIGHT
 2 TIGHTENER
 8 TIME
 11 TION
 11 TIRED
 1 TOE
 4 TONS
 1 TOR
 1 TORS
 1 TRAILER
 17 TRANSMITTER
 4 TRAVEL
 8 TRIP
 2 TROUBLE
 1 TRY
 3 TURNING
 8 TWO
 10 TYPICAL
 1 UN-J
 4 UNIT
 1 UNLOADS
 2 UNSAFE
 4 UNUSUAL

15 STOPPING
 1 STRAIGHT
 8 STRETCH
 15 SUBCOURSES
 1 SUCTION
 8 SUITABLE
 1 SUPER-J
 7 SUPPLY
 8 SURFACES
 1 SWAP
 1 SWINGS
 1 SWI
 7 TACKLE
 11 TAKEN
 2 TANGOUSLY
 17 TO
 3 TOOTH
 5 TEE
 1 TERMINALS
 1 TEST-COMPLETED
 16 THAN
 11 THEM
 1 THERMOSTAT
 13 THIS
 1 THREE-J
 15 THROUGH
 1 THUS
 1 TIGHT-J
 1 TIGHTLY
 2 TINGS
 1 TINKLE
 3 TIMES
 1 TOGETHER
 17 TOOL
 3 TOOLS
 1 TOLAL
 4 TRANSFER
 1 TRANSMITTERS
 2 TREAD
 7 TRK
 2 TROUBLESHOOTING
 2 TURE
 1 THURS
 1 THE-PART
 1 U-BOLT
 9 UNCORRECTED
 1 UNITS
 5 UNPALLETIZED
 1 UNSCREWED
 1 UNWARDING

COUNT1 WORD1

27 UP
54 USE
7 UTILIZE
39 VALVE
2 VENT
1 VICE
2 VIBRALLY
13 W/CLAMSHELL
1 WAREHOUSE
1 WASH
5 WATERPROOFING
5 WEDGE
5 WELL
1 WHEEL-MOUNTED
11 WHICH
71 WILL
1 WIFE
112 WITH
11 WITHOUT
2 WORKED
2 WORK
1 XIV
2 XVI
4 XXVII
1 XII
51 YC

COUNT2 WORD2

2 UPON
5 USED
2 V
5 VALVES
8 VERIFY
2 VICES
10 VULNERAGE
1 VALK
1 WARMING
4 WASHER
2 WAY
5 WEIGHT
3 WERE
19 WHEELS
12 WHILE
12 WINCH
12 WIRE
1 WITHDRAW
1 WOOD
10 WORKING
2 WRAPS
3 XIX
3 XVII
7 XXX
2 XXIV
3 YCKE

MCS WORD LISTING/ASCENDING SEQUENCE

COUNT3 WORD3

8 UPPER
37 USING
1 VAL
13 VARY
11 VERTICAL
1 VISION
1 VOLTS
1 VENT
1 WARMS
1 WASHERS
1 WAYS
2 WEIGHTED
2 WHIT
51 WHEN
1 WIDELY
6 WINDER
8 WIPES
3 WITHDRAWN
4 WOODEN
3 WOOD
6 WRENCH
1 XLI
5 XVIII
1 XXXIX
3 X4
32 YCU

DATE 80259 1817 PAGE 13

COUNT4 WORD4

1 LRE
12 UTILIZATION
1 VALUABLE
5 VEHICLE
1 VIBRATION
1 VISUAL
12 VOLTS
1 VICE
4 WARNING
7 WATER
4 WARE
11 WELDED
58 WHEEL
4 WIFE
1 WIDTH
1 WINDING
3 WINDING
14 WITHIN
2 WORK
3 WOOD
2 XI
1 XVIII
1 XVI
1 XXXVI
3 YARDS
1 YCER

COUNT1 WORD1

COUNT2 WORD2

TOP WORD LISTINGS/DESCENDING FREQUENCY

COUNT3 WORD3

DATE 80259 1819 PAGE 1

COUNT4 WORD4

1143 THE
 277 TH
 185 MANUAL
 151 FOR
 131 FIG
 115 WITH
 107 ON
 87 FOOT
 85 FROM
 81 POSITION
 80 PART
 75 REMOVE
 71 WILL
 64 USING
 62 AT
 59 CONTROL
 57 HOIST
 54 * J MAINTENANCE
 54 OPERATORS
 53 AS
 50 FROM
 49 * J SCOPES
 47 DIGGER
 46 HILL
 45 REACH
 43 SERVICES
 42 IT
 41 SEC
 40 VALVE
 39 DLS
 38 COVER
 37 CLUTCH
 37 END
 32 YOU
 31 SWITCH
 30 HULL
 29 UNFILL
 29 SUPPORT
 27 * J & TO
 27 LO
 26 LIFTING
 26 REPLACE
 25 OIL
 24 * J CRANE
 24 DO
 23 DISCONNECT
 23 TCG
 22 EXTENSION
 22 PINS
 21 * J EQUIPMENT

851 AND
 278 OF
 173 FM
 142 DRUM
 126 ROOM
 119 C
 99 IC
 87 REFER
 84 MOUNTED
 82 CABLE
 80 PART
 78 NOTE
 75 MEASURES
 65 BRAKE
 63 FROM
 61 FRONT
 59 SPECIFIC
 57 PERFORM
 54 ENGINE
 54 USE
 53 YD
 49 CONDITIONS
 48 CHECK
 47 GIVEN
 46 TECHNICAL
 45 THRU
 42 STANDARDS
 40 LOWER
 39 BUCKET
 37 PLACE
 35 -
 34 SET
 33 THAT
 32 POINT
 31 DRIVE
 30 AROUND
 30 INSPECT
 29 DIRECT
 28 APPLICABLE
 27 ARMY
 27 RAISE/LOWER
 26 PERFORMED
 25 HOOK
 25 SIDE
 24 * J TRANSPORTER
 23 BRIDGE
 23 FOOT
 22 CONNECT
 22 LISTED
 22 PREPARING
 21 * J POSITION

514 TO
 273 IN
 156 RE
 142 LEVER
 119 P
 104 TASK
 96 LO D
 85 CHOP
 83 ASSULT
 82 TEST
 77 MOBILE
 75 ORGANIZATIONAL
 69 REAR
 62 * J GTHF
 61 INSTALL
 58 REFERENCE
 55 NUMBER
 54 EQUIPMENT
 53 * J G
 51 OPERATION
 49 HYDRAULIC
 47 * J GOND
 47 REFERENCES
 45 BRIDGE/FERRY
 44 CJ
 41 LINE
 40 PULL
 39 GENERAL
 37 USING
 35 SYSTEM
 34 SHELVES
 32 * J ORGANIZATIONAL
 32 ROPE
 31 SECURE
 30 PACK
 30 OPERATING
 29 G
 28 PP
 27 FORWARD
 27 UP
 26 PROPER
 25 ISW
 25 STAND
 24 ASSEMBLY
 23 CROWD
 23 LOADING
 22 CYLINDER
 22 OFF
 22 SHOVEL
 21 * J GTH

271 *
 214 CN
 156 MAINTENANCE
 132 B
 117 CRANE
 111 TON
 95 OPERATOR
 85 CA
 83 C
 80 MODEL
 77 TRUCK
 74 PERFORMANCE
 65 TRANSPORTER
 62 ALL
 61 E
 58 WHEEL
 55 PEDAL
 54 IF
 53 OFF
 51 WHEN
 49 LIFT
 47 BY
 46 CORRECT
 45 CHECKS
 43 ROD
 41 NOT
 40 RIGHT
 38 MAP
 36 F
 34 LEFT
 33 EFFICIENCY
 31 DEFICIENCIES
 32 WIRE
 31 SHIRT
 30 PERKS
 30 REPT
 29 RAISE
 29 RELEASE
 27 GROUND
 26 CRANE-SHOVEL
 26 PLEN
 25 MAKE
 25 TANKS
 24 CONSTRUCTION
 23 DETERMINE
 23 MANAGEMENT
 22 CRAWLER
 22 PARKED
 21 * J BRIDGE/FERRY
 21 APPLY

COUNT1 WORD1

COUNT2 WORD2

WORD LISTING/DESCENDING FREQUENCY
COUNT3 WORD3

DATE 80259 1819 PAGE 3
COUNT4 WORD4

10 SOCKET
10 VOLTAGE
9 * J GENERAL
9 * J 52
9 BLOCKS
9 BUSHING
9 LEVELS
9 INPUT
9 LOOSE
9 CHECK
9 PAINT
9 GAIT
8 * J GR
8 * J FORM
8 * J PROCEDURES
8 ADJUSTED
8 CAN
8 DUMPING
8 INSTALLED
8 TO
8 PULLETTIZED
8 SECTIONS
8 SURFACE
8 TIME
8 UPPER
7 * J DISCONNECT
7 * J GRAB
7 * J STANDARDS
7 ALARMS
7 CLEAN
7 PLUMB
7 FREE
7 INCH
7 INSTALLING
7 OUTLET
7 RAISED
7 REVOLVING
7 SLANTING
7 SWITCHING
7 THEY
7 AXE
6 * J OPERATING-OPERATION
6 * J OPERATING
6 * J 63
6 ACD
6 BEEN
6 CHARGING
6 DEVICES
6 STAIN
6 FILL

10 TYPICAL
10 WITHOUT
9 * J CHOIST
9 ANGLE
9 BOOT
9 ELECTRICAL
9 HANDLING
9 INSTALLATION
9 LOW
9 PARTS
9 REPLACING
9 TRAYLLE
9 * J 60
9 * J FORWARD
8 * J 6TON
8 ADJUSTING
8 CHECK
8 DURING
8 INSTRUCTION
8 NUT
8 RANGE
8 SECURING
8 SURFACES
8 TAIP
8 VERIFY
7 * J 6DRUM
7 * J 6DN
7 * J 65-3810-289-12
7 ANNOTATE
7 DATA
7 EXTEND
7 FULL
7 INDICATED
7 MACHINE
7 OUTRIGGER
7 RATCHES
7 SELECTOR
7 STICK
7 TAGLINE
7 TRK
6 * J SAFTER-OPERATION
6 * J 60
6 * J 6RELEASE
6 * J 63-4
6 ALLOW
6 BEFORE-OPERATION
6 CLEAN
6 DIFFERENT
6 EACH
6 FITTINGS

10 U-BOLT
10 WORKING
9 * J 6PIN
9 ANY
9 CLIPS
9 FORKLIFT
9 HIGH
9 LOADS
9 MOVE
9 PLATE
9 RIGGING
9 TIGHTEN
9 * J 6CABLE
8 * J 6P
8 * J 6TRUCK
8 RPM
8 CLAMPING
8 HAND
8 LOCKOUT
8 OPERATED
8 RESERVE
8 SWITCH
8 SWITCHES
8 TWO
8 WIFE
7 * J INTERPRETING
7 * J 6PERFORM
7 ACCORDING
7 ASSISTANT
7 DEPTH
7 FIGS
7 HOLD
7 INDICATOR
7 MAIN
7 PICK
7 RELIEF
7 SEQUENCE
7 SUPPLY
7 TER- J
7 UNFOLL
6 * J ATTACHMENT
6 * J 6ENGINE
6 * J 6SEC
6 * J 64
6 BAND
6 BELLCRANK
6 CONSUMPTION
6 DRAG
6 EARTH
6 FOUR

10 LACER
9 * J 6CU
9 * J 6SAFETY
9 BEARING
9 CON- J
9 CLEVES
9 FVD
9 LOCKBOOK
9 NEUTRAL
9 PNEUMATIC
9 SERVICEABILITY
9 TORQUE
9 * J 6FCR
8 * J 6PERFORMANCE
8 * J 6576
8 BATTERY
8 DC
8 INSTRT
8 MT
8 OUTER
8 REVERSE
8 SUITABLE
8 TERRAIN
8 UNCORRECTED
7 * J 6CONSTRUCTION
7 * J 6LINKAGE
7 * J 6CRAP
7 ADDITIONAL
7 BEFORE
7 COES
7 FLUID
7 IDENTIFIED
7 INNER
7 OPERATE
7 PROPELLER
7 RETRACT
7 SLACK
7 SUSPENSION
7 TESTER
7 WATER
6 * J CRACK
6 * J 6CRAWER
6 * J 6USING
6 * J 65-5420-210-12
6 BATTERIES
6 BRACES
6 CUTTEYS
6 DRAGLINE
6 ENCOGE
6 FULLY

| COUNT1 | WORD1 | COUNT2 | WORD2 | COUNT3 | WORD3 | COUNT4 | WORD4 |
|--------|---------------------|--------|--------------------|--------|---------------|--------|----------------------|
| 6 | BOBBLES | 6 | GOOD | 6 | GREASE | 6 | FARNISCHFEGER |
| 6 | BUSH | 5 | HAVE | 6 | HOLIC | 6 | MACE |
| 6 | TING | 6 | INSPECTED | 6 | J | 6 | LACING |
| 6 | LEAD | 6 | LEAKAGE | 6 | LEIST | 6 | LENGTH |
| 6 | LOADED | 6 | LUNCHED | 6 | MAINTAINING | 6 | MALE |
| 6 | MOOT | 6 | ONLY | 6 | OPPOSITE | 6 | OUTPUT |
| 6 | PERSONNEL | 6 | POINTS | 6 | PROCEED | 6 | PAID |
| 6 | REMAINING | 6 | REMOVAL | 6 | RESTING | 6 | SAVE |
| 6 | SHALLOT | 6 | SHUTOFF | 6 | SIGNALS | 6 | SIZE |
| 6 | SFRACKET | 6 | STABILIZE | 6 | STEERING | 6 | SUPERSTRUCTURE |
| 6 | TINE | 6 | TRANSMISSION | 6 | WINDER | 6 | WRENCH |
| 5 | J BACKGROUND | 5 | J GISSAULT | 5 | J BRUCKNER | 5 | J CAUTION |
| 5 | J CHECK | 5 | J GULLMISHELL | 5 | J CONTROL | 5 | J FIVE |
| 5 | J ELECTRO-HYDRAULIC | 5 | J EXCAVATORS | 5 | J GP | 5 | J GIVEN |
| 5 | J HANDLING | 5 | J GS | 5 | J LIFTING | 5 | J SPARKED |
| 5 | J REMOVING | 5 | J GSHORT | 5 | J GSHOVEL | 5 | J SWITCH |
| 5 | J GZ/CLAMHELL | 5 | J GWATERPROOFING | 5 | J G330 | 5 | J G33-750 |
| 5 | ABLE | 5 | ACCESSORY | 5 | APPROPRIATE | 5 | ATTACH |
| 5 | AUXILIARY | 5 | BITE | 5 | BODICE | 5 | CADDREWS |
| 5 | CLAMP | 5 | CLIMBING | 5 | CONTOURITION | 5 | CRACKS |
| 5 | CRIPPING | 5 | DEAD | 5 | DIMETER | 5 | CONF |
| 5 | FEWLE | 5 | FIT | 5 | FRAYED | 5 | GROOVE |
| 5 | HEEL | 5 | JACK | 5 | LOOP | 5 | N |
| 5 | MINIMUM | 5 | NEW | 5 | OUTSIDE | 5 | PERIOD |
| 5 | PLUG | 5 | POWER | 5 | PRELUD | 5 | PULLING |
| 5 | REF-J | 5 | RELAY | 5 | REINFORCEMENT | 5 | SHORT |
| 5 | SITE | 5 | SMALL | 5 | SPICED | 5 | STEPS |
| 5 | STOCKPILE | 5 | STORAGE | 5 | SUIT-J | 5 | TER |
| 5 | TOWARD | 5 | UNPALLETIZED | 5 | USED | 5 | VALVES |
| 5 | VEHICLE | 5 | WATER PROOFING | 5 | WEDGE | 5 | WEIGHT |
| 5 | WELL | 5 | XVIII | 4 | " | 4 | J ADMINISTRATION |
| 4 | J GALL | 4 | J GAT | 4 | J GDEFORD | 4 | J IDENTIFICATIONS |
| 4 | J INEFFICIENCIES | 4 | J GDEGREES | 4 | J GEXTENDING | 4 | J ADMINING-OPERATION |
| 4 | J GKNOWLEDGE | 4 | J GENGINEER | 4 | J GEXTENSION | 4 | J GENGINE |
| 4 | J GHYDRAULIC | 4 | J GGPV | 4 | J GITEMS | 4 | J GLEFT |
| 4 | J GLLINE | 4 | J GMANAGEMENT | 4 | J GMANUALS | 4 | J GCOUNTING |
| 4 | J GNOISE | 4 | J GNOISE | 4 | J GCOVER | 4 | J GREGAL |
| 4 | J GPILE | 4 | J GCREVE | 4 | J GNETTRACT | 4 | J GPRINTED |
| 4 | J GSECURE | 4 | J GCOLLECTOR | 4 | J GSHAFTS | 4 | J GSHUTOFF |
| 4 | J GSUITABLE | 4 | J GSUPPORT | 4 | J GSHING | 4 | J GSTEST |
| 4 | J GTHROUGH | 4 | J GVERTICAL | 4 | J GSHIELDS | 4 | J GWHEN |
| 4 | J GWIPE | 4 | J G311-3931-242-12 | 4 | J G12 | 4 | J G5-5421-204-12 |
| 4 | ACCELERATOR | 4 | AGAINST | 4 | ALIGNED | 4 | APPLIED |
| 4 | APPROACH | 4 | BANK | 4 | BRACKET | 4 | BRAKEBAND |
| 4 | ATING | 4 | CAPSCREW | 4 | CARRIAGE | 4 | CARRY |
| 4 | CUT | 4 | CLEVIS | 4 | COMPLETELY | 4 | CRACKED |
| 4 | CUBIC | 4 | CUT | 4 | DEFICIENCY | 4 | DEFICIT |
| 4 | DIGGING | 4 | DIRECTLY | 4 | DUTY | 4 | FACE |
| 4 | DRAWN | 4 | ENTER | 4 | FIX-LEAD | 4 | FILTER |
| 4 | FEWLE | 4 | FLANGED | 4 | CO | 4 | FILE |

COUNT 1 WORDS

COUNT 2 WORDS

WORDS WORD LISTING/DESCENDING FREQUENCY

COUNT 3 WORDS

DATE 02259 1819 PAGE 5

COUNT 4 WORDS

4 HORIZONTAL
 4 INSION
 4 KIT
 4 LIVE
 4 LONON
 4 MATERIALS
 4 MATHISEN
 4 PALLEP
 4 PIPES
 4 PENDING
 4 PUPPER
 4 RAY
 4 SPECIFICALLY
 4 TANKER
 4 TAPPING
 4 TIEP
 4 TROUPE
 4 TUB
 4 WOLF
 3 * J ADJUSTMENT
 3 * J SHOTS
 3 * J SCRAWLER
 3 * J FOLLOWING
 3 * J JUMP
 3 * J KIT
 3 * J LEVERS
 3 * J SCRADES
 3 * J MILLIMETER
 3 * J SCREW
 3 * J OPERATIVE
 3 * J UNLIFIED
 3 * J UNLIFIED
 3 * J OPER
 3 * J SPECIFIED
 3 * J DISPENSION
 3 * J ATHERMIT-J
 3 * J WELDED
 3 * J 64-242
 3 * J 65-3310-294-12
 3 ADAPTER-OPERATION
 3 BELOW
 3 CAREFULLY
 3 CIRCUITS
 3 COMPONENT
 3 CONTINUOUSLY
 3 DECK
 3 DRUMS
 3 EITHER
 3 EXCESS
 3 FITTING

4 HOUSINGS
 4 INTERPRE.
 4 LEAKS
 4 LEAD-CENTER
 4 MERKS
 4 MIL-S-11031
 4 NOW
 4 PANEL
 4 QUALIFIED
 4 REMOVED
 4 RODS
 4 SHOWN
 4 SPECIFICATIONS
 4 TANK
 4 THEIR
 4 TONS
 4 TOOLS
 4 UNUSUAL
 4 WHEAT
 3 * J GAMMUTATE
 3 * J GUCKEN
 3 * J CYLINDER
 3 * J FOLLOWS
 3 * J HIGH
 3 * J GROP
 3 * J ELINES
 3 * J COMMUNICATION
 3 * J GROUT
 3 * J POWER
 3 * J PROPELLER
 3 * J GRAISE
 3 * J REQUIREMENTS
 3 * J SCHEMATICS
 3 * J LOCKKEY
 3 * J GUNBU
 3 * J GUNDER
 3 * J GUNDEL
 3 * J GS
 3 ACCELERATE
 3 AIR
 3 BELTS
 3 CAUSE
 3 CLAY-J
 3 COMPONENTS
 3 CONVERTING
 3 DIVIDE
 3 DUCT
 3 ELECTRIC
 3 EXTENDED
 3 FREE-FALL

4 IGNITION
 4 K
 4 LESS
 4 LOCKWASHERS
 4 MAST
 4 MOTOR
 4 OPERA-J
 4 PITCH
 4 REDUCTOR
 4 REPLACED
 4 SPARE
 4 SIMULTANEOUSLY
 4 SPECIFIED
 4 TEE
 4 THEN
 4 TRANSFER
 4 UNBOLTS
 4 WINDING
 4 WOODS
 3 * J G-SCHEMRLY
 3 * J GSCIRCUIT
 3 * J GDA
 3 * J GLEYS
 3 * J GLETFIFIED
 3 * J GLEPLS
 3 * J GLISTED
 3 * J GMAINTAINING
 3 * J GPERA-J
 3 * J GPERA-ING
 3 * J GFULL
 3 * J GCHANGE
 3 * J GSTR-EPYDER
 3 * J GSHOULD
 3 * J GSTOPPING
 3 * J GTIGHTEN
 3 * J GUSE
 3 * J GWILL
 3 * J G5-3310-232-12-1
 3 ADAPTER
 3 ALIGN
 3 BUTTON
 3 CAUDING
 3 CLAMP
 3 CONSTRUCT
 3 CRANK
 3 ERROR
 3 DURING-OPERATION
 3 ENDS
 3 FALLING
 3 GAGES

4 IMPROVED
 4 KEY
 4 LIST
 4 LONGITUDINALLY
 4 MATERIAL
 4 MOVEMENT
 4 PACKING
 4 FEET
 4 RAISE/
 4 RESPONSIBLE
 4 SECTION
 4 SPACER
 4 SPECIFIED
 4 TEE
 4 TEMPERATURE
 4 THUMB
 4 TRANSPORT
 4 UNIMPROVED
 4 WOODS
 4 XXVII
 3 * J GDF-FMC-1
 3 * J GCONNECT
 3 * J GDESIRED
 3 * J GSCHEMATA-NEUTRAL-REV
 3 * J GINDICATOR
 3 * J GLEVEL
 3 * J GLOC
 3 * J GMIDDLE
 3 * J GOPERATIONS
 3 * J GPRESSURE
 3 * J GRUSH
 3 * J GRATCH
 3 * J GRIGHT
 3 * J GSCCKET
 3 * J GSUPPLIES
 3 * J GTEHAFD
 3 * J GVALVE
 3 * J GWINCH
 3 * J G5-3310-208-12-1
 3 ADJUSTMENTS
 3 ASSIST
 3 CALCULATE
 3 CERTAIN
 3 COMMON
 3 CONTINUE
 3 CYLINDERS
 3 DROP
 3 EIGHT
 3 EQUALS
 3 FEET
 3 CENTLY

WORDS WORD LISTING/DESCENDING FREQUENCY

COUNT1 WORD1

COUNT2 WORD2

COUNT3 WORD3

COUNT4 WORD4

2 * J TRANSMISSION
 2 * J SWITHEN
 2 * J 6240A-1
 2 * J 54-259
 2 * J 65
 2 ALIGNMENT
 2 ALICE
 2 ALLENDE
 2 BELTED
 2 BULGOS
 2 COLUMNS
 2 CONNECTED
 2 CRANKING
 2 CYCLE
 2 JENIS
 2 DEPARTED
 2 DIFFERENTIAL
 2 DISCREETLY
 2 DRIFTING
 2 EATING
 2 EASY
 2 EXCESSIVELY
 2 EYE
 2 FIGHT
 2 FINE
 2 FUZION
 2 GRADUALLY
 2 HECTING
 2 INDICATORS
 2 INTERFERENCE
 2 L/2
 2 LAMER
 2 LEA- J
 2 LIA
 2 LITE
 2 MENDED
 2 MINE
 2 MOBILE
 2 MULTIMETER
 2 NINE
 2 O
 2 PENCILS
 2 PERFORMING
 2 PLUMBER
 2 PROPOSITIONS
 2 PULLED
 2 QUALIFIED
 2 REPT
 2 REVERSING
 2 POSITION

2 * J STRAK
 2 * J 61
 2 * J 5380-6
 2 * J 65-3810-232-12
 2 * J 6612-051-9665-E
 2 ANTITROJIE
 2 ATTACHING
 2 BASE
 2 BODY
 2 CHARTS
 2 CLEMER
 2 CONTROLLED
 2 CRANKING
 2 DE- J
 2 DEPENDENT
 2 DESIGNATED
 2 DIS
 2 DISCARD
 2 DROPPING
 2 EM
 2 EV- J
 2 EXTENDING
 2 F.P.
 2 FILLED
 2 FIRST
 2 FUNCTIONAL
 2 GUN
 2 HYDROMETER
 2 INLET
 2 JIB
 2 LAYER
 2 LIP
 2 LOWERING
 2 LUBRICATED
 2 MATELY
 2 MECHANICALLY
 2 MINUTE
 2 MONITOR
 2 RECTIONS
 2 NONE
 2 OPENED
 2 PARALLEL
 2 PERMIT
 2 POST- JTION
 2 PREPARATION
 2 PUNCH
 2 READ
 2 RECTION
 2 RISE
 2 SCHEMATIC

2 * J TYPICAL
 2 * J 616-3930-243-12
 2 * J 64-165
 2 * J 65-3810-294-12-1
 2 ANTERVAL
 2 APPROX- J
 2 AXLE
 2 BENTAGE
 2 BONES
 2 CHYIN
 2 CLIP
 2 COOLING
 2 CRIPRO
 2 COLLECTOR
 2 COPPER- JETED
 2 DETERMINED
 2 DIPTICK
 2 DISTINGUISH
 2 DRUM
 2 EV- J
 2 EVENLY
 2 EXTINGUISHER
 2 FLY
 2 FILLER
 2 FLAT
 2 GAGE
 2 HANDLE
 2 IDLE
 2 INSPECTION
 2 JUST
 2 LENGTHEN
 2 LIX
 2 LS2
 2 MAKING
 2 MAXIMUM
 2 MEDIUM
 2 METERS
 2 MOTION
 2 NEEDED
 2 NORMAL
 2 ORIGINAL
 2 PERCENTS
 2 PLACED
 2 POSITIONING
 2 PRIOR
 2 PUT
 2 RECONNECT
 2 REDUCE
 2 ROLLER
 2 SEC- J

2 * J SUNTIL
 2 * J 679
 2 * J 64-221
 2 * J 65-5420-210-34
 2 ADDITION
 2 APPROXIMATELY
 2 BATTLE
 2 BRING
 2 BRICE
 2 CHECKE
 2 COAT
 2 CORRECTIVE
 2 CY- J
 2 DEFECTS
 2 DEPOSIT
 2 DI- J
 2 DISASSEMBLE
 2 DISTRIBUTION
 2 CLOSED
 2 ENLARGED
 2 EXCALVA- J
 2 EXTRA
 2 FID
 2 FIF
 2 FORWARD-NEUTRAL-REVERSE
 2 GENERATING
 2 HC
 2 II
 2 INSULATION
 2 KEEPING
 2 LET
 2 LOCKED
 2 LSP
 2 MARKED
 2 MEASURE
 2 MEAT
 2 MISSING
 2 MOVING
 2 KEPT
 2 NUTS
 2 OVERRIDE
 2 PERCENT
 2 PLS
 2 PRE- J
 2 PROPELLING
 2 QUICK
 2 REPTD
 2 REPAIRER
 2 ROOM
 2 SECOND

| COUNT1 WORD1 | COUNT2 WORD2 | POS WORD LISTING/DESCENDING FREQUENCY | COUNT3 WORD3 | COUNT4 WORD4 |
|-----------------|-------------------|---------------------------------------|---------------------|-------------------------|
| 1 MINIMUM | 1 MISS- J | | 1 MISS-11031 | 1 MCN |
| 1 MOUNTED | 1 MOUNT | | 1 MOUNTING | 1 MOUNTINGS |
| 1 MULTIPLY | 1 MUM | | 1 MUG | 1 MULLS |
| 1 MATURE | 1 NEAR | | 1 NEC- J | 1 NCEG- J2-304 J L2-305 |
| 1 NEED | 1 NENTS | | 1 NESS | 1 NICAL |
| 1 NICE | 1 NOTICED | | 1 NOTING | 1 NUMBERED |
| 1 NUMBERS | 1 ON- J | | 1 ORSERVE | 1 ORSERVED |
| 1 ORGANOLES | 1 OBTURC- JT IONS | | 1 OBTURCTIONS | 1 ORTAIN |
| 1 OF- J | 1 OR- JERATORS | | 1 OSENS | 1 OPERATIONAL |
| 1 OPERATIONS | 1 OR- J | | 1 ORGAN- JIZATIONAL | 1 ORTICO |
| 1 ORNAMENT | 1 OUTBOARD | | 1 OUTERMIST | 1 ORTBIGGING |
| 1 OVER- JUMP | 1 OVERCOME | | 1 OVERHIND | 1 OVERHATING |
| 1 PALOOK | 1 PAGES | | 1 PAIRER | 1 PALLETS |
| 1 PARTICULAR | 1 PASS | | 1 PAGES | 1 PAKY |
| 1 PAWL | 1 PAY- J | | 1 PED- J | 1 PEADS |
| 1 PILOT | 1 PING | | 1 FITTING | 1 PLANETARY |
| 1 PLUM | 1 PMSJ- J | | 1 PNEUMATIC | 1 FC- J |
| 1 PLU | 1 PMSI- JAS | | 1 POSITIONS | 1 PESTOLE |
| 1 PLU-CHAR GING | 1 PMSI | | 1 PRACTICE | 1 PREDETERMINED |
| 1 PNEUMONICAL | 1 PMS- J | | 1 PRESSED | 1 PRESSING |
| 1 PREVIOUSLY | 1 PRIMARY | | 1 PROCEEDING | 1 PRITUDE |
| 1 PRY | 1 PUBLICATIONS | | 1 PULLER | 1 PUNCTURING |
| 1 PUD- J | 1 PUTTING | | 1 PYRAMID | 1 QUART- J |
| 1 | 1 RACE | | 1 RACES | 1 RAYS |
| 1 RAINING | 1 RANVISE | | 1 REASONING | 1 REASONABLY |
| 1 RECTANGLE | 1 RECOMMENDED | | 1 RECALIBER | 1 RECALIB |
| 1 RECEIVING | 1 REGISTERS | | 1 REGULATIONS | 1 RELEASED |
| 1 RELEASING | 1 RELIEVE | | 1 REMAIN | 1 REMO- J |
| 1 REMOVING | 1 RENT | | 1 RESERVOIRS | 1 RESERVOIR |
| 1 REPRODUCTIVE | 1 REST | | 1 RESTORE | 1 RESTOR- J |
| 1 RINGS | 1 RETAINING | | 1 RETENTION | 1 RETURNED |
| 1 RING- J | 1 RING | | 1 RIVET | 1 RIVETS |
| 1 ROTATE | 1 ROAD | | 1 RIV | 1 RUCK |
| 1 RUM- J | 1 SALT | | 1 SAND | 1 SAW |
| 1 RUNNING | 1 SCREAMED | | 1 SCREAMERS | 1 SCATED |
| 1 SECONDARY | 1 SECONDS | | 1 SELECT | 1 SELECTED |
| 1 SEQUENCE | 1 SEQUENCES | | 1 SER- J | 1 SEPTA |
| 1 SERVICE | 1 SETTING | | 1 SHIFTS | 1 SHIFTING |
| 1 SHIPMENT | 1 SHMET | | 1 SHOCK | 1 SHOTTON |
| 1 SHUTTERS | 1 SHUTTLE | | 1 SH- J | 1 SIMULTANE- JOUSLY |
| 1 SINGLE | 1 SINGLE-PALLET | | 1 SINGLE-PART | 1 SIBANT |
| 1 SITUATION | 1 SITUATION | | 1 SIZES | 1 SKID |
| 1 SLUM | 1 SLEEVES | | 1 SLIDING | 1 SLINGS |
| 1 SLUTS | 1 SMALLEST | | 1 SNIP | 1 SNAPPING |
| 1 SLOTTING | 1 SOLDIERS | | 1 SOLVENT | 1 SOON |
| 1 SMOKE- J | 1 SPECIFIC- J | | 1 SPEEDO | 1 SPLICE |
| 1 SPLIT | 1 SPECTED | | 1 SPOTTING | 1 SPOTTINGLY |
| 1 STABILITY | 1 STANDARDS | | 1 STANDARDS | 1 STANDS |
| 1 STATE | 1 STEADY | | 1 STEP | 1 STECK |
| 1 STATE- J | 1 STOPS | | 1 STORAGE | 1 STRAIGHT |

HEADQUARTERS
UNITED STATES ARMY TRAINING AND DOCTRINE COMMAND
FORT MONROE, VIRGINIA 23651

DATA CONTROL NUMBER
JOB NO / PROJECT NO



Word Frequency Analysis

MOS: 62F

Skill Level 2

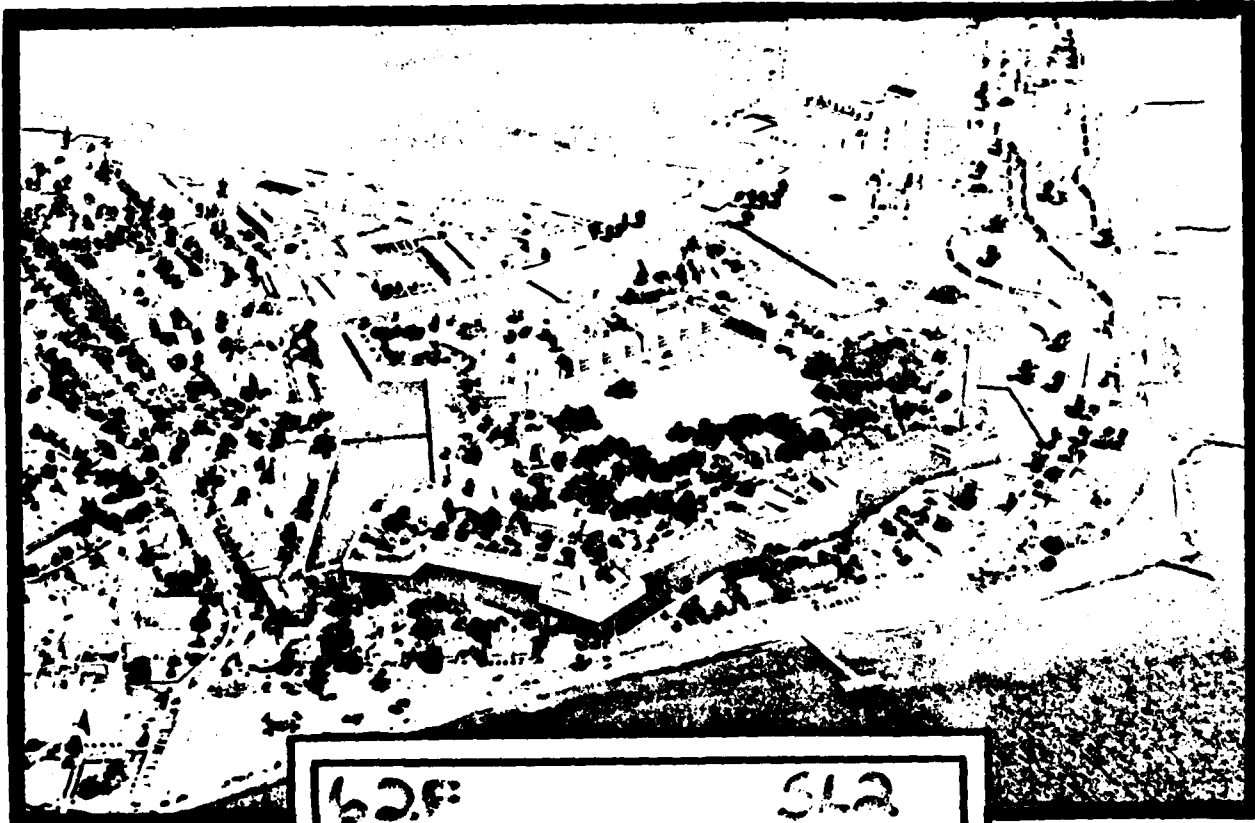
PREPARED BY: OPERATIONS DIV, DPFO

ATDP FORM 109-1 Feb 88 edition may be used until exhausted.

COPY _____ OF _____ COPIES

HEADQUARTERS
UNITED STATES ARMY TRAINING AND DOCTRINE COMMAND
FORT MONROE, VIRGINIA 23651

DATA CONTROL NUMBER
Job No / Proj No



WFA
SEP 15 1980
ARAD

62.F SL2
 Couch

ATDP FORM 109-1 Replaces ATDS 118-1, Feb 75,
Feb 80 which is obsolete

PREPARED BY: OPERATIONS DIV, DPFO

COPY _____ of _____ COPIES

| COUNT1 | WORD1 | COUNT2 | WORD2 | COUNT3 | WORD3 | COUNT4 | WORD4 |
|--------|------------------|--------|--------------------|--------|--------------------|--------|-------------------|
| 1 | /=6 | 1 | | 1 | CLAM | 1 | /= |
| 1 | J ACCORDING | 1 | J C | 1 | J CLAM | 4 | J CLAM |
| 4 | J BAND | 1 | J CATER | 1 | J CLAM G | 2 | J CALLING |
| 2 | J BAST | 2 | J CAPPLY | 1 | J CALL | 1 | J CAS |
| 2 | J BRACK | 1 | J CATTACH- J | 1 | J CAPPROPRIATE | 1 | J CB |
| 1 | J BROTH | 1 | J CBANK | 1 | J CATTACHMENT | 1 | J CBOM |
| 1 | J CAUTION | 3 | J CBFAKE | 1 | J CBITE | 2 | J CCABLE |
| 1 | J COMPLETELY | 3 | J CCLAMSHHELL | 1 | J CC | 2 | J CCLUTCH |
| 2 | J CO | 4 | J CCFANE | 1 | J CCLEAR | 2 | J CCROWD |
| 5 | J COJUM | 1 | J CDECREASE | 3 | J CCRONE-SHOVEL | 1 | J CCORAGLINE |
| 1 | J CENOUGH | 1 | J CDESRIP | 3 | J CCHIPPER | 2 | J CENGINEER |
| 1 | J CFILL | 1 | J C&EQUIPMENT | 1 | J CCK- J | 1 | J CF |
| 1 | J CFULL | 1 | J CFCR | 1 | J CCFORWARD | 4 | J CCFRONT |
| 1 | J CIMMEDIATELY | 1 | J CCHLVES | 1 | J CCHLIGHT | 1 | J CCHISTING |
| 3 | J CKEEP | 1 | J CINTERDEPENDENT | 1 | J CCTS | 1 | J CCHOR |
| 4 | J CLOAD | 4 | J CLEVER | 2 | J CCLIFTING | 1 | J CCLISTED |
| 3 | J CEMERGES | 1 | J C&CONTAINED | 2 | J C&CONTENANCE | 2 | J CCMANUAL |
| 1 | J CJUST | 1 | J C&CDE | 1 | J C&COST | 4 | J CCMOUNTED |
| 1 | J COPEN | 1 | J CNEVER | 1 | J C&C | 1 | J C&C |
| 1 | J C&OR | 2 | J C&OPERATIONS | 2 | J C&OPERATOR | 5 | J C&OPERATOR'S |
| 1 | J C&RKFED | 3 | J C&ORGANIZATIONAL | 1 | J C&OUTFITTERS | 1 | J C&OVER |
| 1 | J C&PULL | 1 | J C&PASSES | 1 | J C&PDALS | 3 | J C&POSITION |
| 1 | J C&PULL | 1 | J C&PULLING | 1 | J C&RATE | 1 | J C&PE- J |
| 2 | J C&PUSH | 3 | J C&REFERENCE | 1 | J C&RELEASE | 1 | J C&RETRACTING |
| 1 | J C&SAFETY | 2 | J C&SMC | 1 | J C&SERVICES | 1 | J C&SHOVEL |
| 1 | J C&SIDES | 1 | J C&SIMUL- J | 1 | J C&C | 2 | J C&SPECIFIC |
| 1 | J C&SPECIFIED | 1 | J C&STANDARDS | 1 | J C&STOCK | 3 | J C&SWING |
| 13 | J C&TIME | 4 | J C&TM | 5 | J C&TC | 1 | J C&TRUCKS |
| 1 | J C&UNLOADING | 2 | J C&UTILIZATION | 3 | J C&W/CLAMSHHELL | 1 | J C&WHEN |
| 2 | J C&WILL | 2 | J C&WITH | 2 | J C&WITHIN | 2 | J C&CI |
| 1 | J C&456 J L2-457 | 1 | J C&2-46 | 1 | J C&2-462 J L2-463 | 2 | J C&2335 |
| 1 | J C&4 | 1 | J C&5-3810-218-12 | 6 | J C&5-3810-288-12 | 1 | J C&5-3810-289-12 |
| 4 | J C&576 | 37 | A | 1 | ABOVE | 1 | ACCOMPLISHED |
| 2 | ACCORJING | 1 | ACCURATE | 1 | ACTION | 2 | AFTER |
| 1 | AGAINST | 1 | AL | 1 | ALL | 1 | ALLOW |
| 4 | ALLOWING | 1 | ALMOST | 1 | ALSO | 3 | ALWAYS |
| 3 | AMERICAN | 1 | AN | 80 | AND | 4 | AND/OR |
| 3 | ANGLE | 2 | APPLIED | 7 | APPLY | 1 | APPROACHED |
| 2 | APPROPRIATE | 1 | ARC | 6 | ARE | 3 | AREA |
| 9 | AS | 7 | AT | 2 | ATTACHMENT | 1 | ATTACHMENTS |
| 19 | A | 7 | BACK | 1 | BACK- J | 6 | BACKHGE |
| 3 | BANK | 17 | BE | 1 | BEEN | 1 | BEFORE |
| 1 | BEING | 1 | BETWEEN | 1 | BEYOND | 1 | BIGGER |
| 6 | BITE | 14 | BOOM | 11 | BOTH | 24 | BSAKE |
| 8 | BRAKES | 22 | BUCKET | 6 | BY | 10 | C |
| 5 | CB | 6 | CABLE | 1 | CABLES | 1 | C&A |
| 4 | C&CAPACITY | 2 | CARRIER | 3 | CAST | 1 | CASTING |
| 1 | CAUSE | 4 | CAUTION | 1 | CAVATION | 1 | CENTER |
| 1 | CHINE | 1 | CLAM- J | 11 | CLAMSHHELL | 3 | CLEAR |

DATE 80259 1726 PAGE 1
62F-2

WORDS WORD LISTING/ASCENDING SEQUENCE

COUNT1 WORD1

COUNT2 WORD2

COUNT3 WORD3

COUNT4 WORD4

1 CLEEPS
 1 CLOSING
 1 COMMON
 1 CONTINUOUSLY
 5 CRANE-SHOVEL
 1 CROWDED
 2 CYCLE
 1 DE- J
 3 DEPTH
 2 DIGGING
 1 DO
 2 DRAG
 1 DROPPING
 2 DUMPED
 5 EARTH
 3 EDGE OF
 17 EQUIPMENT
 2 EXTENDED
 5 FEET
 1 FIRMLY
 11 FEEL
 1 FULL
 4 GIVEN
 3 GROUND
 2 HWS
 1 HCE
 1 HYD
 19 II
 1 INTERVENING
 2 ITC
 4 LEFT
 34 LEVER
 2 LINES
 7 LOADING
 1 LOCKED
 4 MAKE
 5 MAY
 5 MODEL
 1 MOST
 1 MTD
 2 NEUTRAL
 2 NET
 1 OBSTRUCTIONS
 2 ONLY
 5 OPPOSITION
 4 OPPOSITE
 2 OUTRIGGERS
 1 PASS
 2 PEDALS
 1 PERSON- J

1 CLMSHELL
 12 CLUTCH
 2 COMPLETED
 3 CONTROL
 2 CRANES
 11 CU
 4 D
 2 DECREASE
 3 DERRICK
 37 DIPPER
 1 DUES
 3 DRAGGING
 46 DRUM
 10 DUMPING
 4 EASE
 2 ENGINEER
 1 EXCAVA- J
 1 EXTENSION
 30 FIG
 1 FLOWING
 3 FORWARD
 2 FULLY
 1 GC
 1 HALF
 1 HAVE
 10 HOIST
 3 IF
 1 INCHES
 3 INTO
 3 KEEP
 1 LENGTH
 1 LEVERS
 3 LISTED
 4 LOCATED
 1 MA- J
 13 MANUAL
 3 MEASURES
 2 MODELS
 11 MOUNTED
 4 MUST
 2 NEVER
 15 NOTE
 34 OF
 4 OPEN
 5 OPERATIONS
 7 OR
 8 OVER
 1 PASSES
 4 PERFORM
 1 PERSONNEL

1 CLOSE
 1 CON- J
 4 CONDITIONS
 4 CORRESPONDENCE
 4 CRANER
 4 CUBIC
 2 DAVAGE
 4 DEPRESS
 2 DESSERTED
 1 DIRECTLY
 3 DONE
 2 DRAGLINE
 3 DRUM
 4 DURING
 2 EASING
 4 ENGR
 1 EXCAVATED
 2 F
 3 FILL
 20 FIN
 3 FROM
 1 G
 4 GOOD
 4 HANDLING
 2 HEIGHT
 3 HOLD
 4 III
 4 INSTALLED
 30 IS
 2 KEEPING
 1 LESS
 6 LIFTED
 8 LOAD
 1 LCH
 1 MACHINE
 1 MANUAL
 1 MENT
 1 MON
 1 MOVE
 1 NECESSARY
 1 NEXT
 4 NUMBER
 2 OFF
 1 OPENED
 9 OPERATOR
 8 ORGANIZATIONAL
 13 P
 1 PED- J
 6 PERFORMANCE
 4 PILE

1 CLOSED
 1 CONF
 8 CONSTRUCTION
 19 CRANE
 2 CROWD
 1 CUT
 3 DATA
 1 DEPRESSED
 1 DIG
 1 DIS- J
 3 DCCR
 2 DRCP
 13 DUMP
 4 E
 1 EMPTY
 3 ENOUGH
 2 EXCAVATORS
 1 FAR
 2 FILLED
 2 FICT
 20 FRONT
 2 GREATLY
 1 GRADUALLY
 1 HARNISCHFEGER
 5 HIGH
 3 HOLDING
 1 IMPORTANT
 1 INSTRUCTION
 8 IT
 2 LEAST
 1 LEVEL
 5 LIFTING
 5 LOADED
 4 LOWER
 13 MAINTENANCE
 3 MATERIAL
 3 MINUTES
 1 MORE
 1 MOVEMENT
 1 NEL
 2 NO
 1 OBSTACLES
 14 ON
 1 OFFRAYS
 2 OPERATOR'S
 4 OUT
 5 PARKED
 18 PEDAL
 4 PERFORMED
 3 PLATE

COUNT1 WORD1

1 PLAY
 1 PRACTICE
 14 PULL
 1 QUIPMENT
 2 REACHES
 11 REFERENCE
 2 REPORT
 2 RISE
 3 SERVICES
 2 SHOULD
 1 SIMUL- J
 2 STAY
 2 SLOWLY
 2 SLOW
 3 SPOT
 1 START
 1 STOCK
 4 STRUCK
 4 SWINGING
 1 TAKE
 8 TALK
 2 TENSION
 1 THEN
 1 TION
 1 TOP
 1 TRK
 1 TR
 1 UNWINDING
 2 UTILIZATION
 1 WHEEL
 1 WIDTH
 2 WITHOUT

COUNT2 WORD2
 MOS WORD LISTING/ASCENDING SEQUENCE
 COUNT3 WORD3

5 POINT
 1 PRESS
 1 PULLED
 7 RAISE
 28 REAR
 8 REFERENCES
 3 REQUIREMENT
 1 ROTATION
 3 SET
 2 SHOVEL
 1 SIMULTANE- JOUSLY
 2 SLACK
 2 SMOOTH
 12 SPECIFIC
 1 SPOTTED
 1 STARTS
 5 STOCKPILE
 4 SUBCOURSES
 1 SWINGS
 1 TAKEN
 1 TANT
 3 THAN
 2 THEY
 32 TH
 5 TOWARD
 18 TRUCK
 1 UNDER
 8 UP
 4 VARY
 16 WHEN
 9 WILL
 1 WORK
 1 WORKING

8 POSITION
 3 PREVENT
 2 PULLING
 3 RAISED
 1 FEEL
 14 RELIEVE
 3 RETRACT
 2 RULES
 2 SEVEN
 1 SHUT
 3 SIMULTANEOUSLY
 1 SLAM
 1 SHOP
 1 SPECIFICATIONS
 3 STABILIZE
 1 STEP
 6 STOP
 1 SWIN
 1 SWITCH
 1 TANCE
 2 TB
 6 THAT
 1 THIS
 79 TO
 2 TRENCH
 2 TRUCKS
 1 UNLOADS
 4 USE
 4 VOLUME
 2 WHICH
 16 WITH
 2 WORKED
 4 YARDS

CATE 80259 1726 PAGE 3
 COUNT4 WORD4

2 POSSIBLE
 1 PROPER
 8 PUSH
 3 RANGE
 13 REFER
 1 PELEASING
 4 RIGHT
 2 SAME
 1 SMELL
 1 SIDES
 1 SINCE
 2 SLIGHTLY
 11 SO
 3 SPECIFIED
 3 STANDARDS
 1 STICK
 1 STOPS
 34 SWING
 2 TAILGATE
 2 TAKEUSLY
 1 TEETH
 192 THE
 3 TIME
 17 TON
 1 TRIP
 4 TYPICAL
 3 UNTIL
 1 USED
 1 W/CLAMSHELL
 2 WHILE
 6 WITHIN
 1 WORKIN
 11 YD

COUNT1 WORD1

COUNT2 WORD2

MOS WORD LISTING/DESCENDING FREQUENCY
COUNT3 WORD3

DATE 80259 1726 PAGE 1
COUNT4 WORD4

192 THE
17 A
14 SWING
20 FRONT
20 FM
18 PEDAL
17 TON
14 BLOW
13 * J & THE
13 P
11 BOTH
11 MOUNTED
11 C
9 OPERATOR
8 IT
8 POSITION
8 UP
7 LIFTING
6 ANE
6 CABLE
6 TH-T
5 * J & TO
5 FEET
5 M.V
5 PARKED
4 * J & A
4 * J ELEVATOR
4 * J & 576
4 CAUTION
4 CUSIC
4 E
4 GOOD
4 LEFT
4 MUST
4 OUT
4 RIGHT
4 TYPICAL
4 VIBROS
3 * J & DIPPER
3 * J & ORGANIZATIONAL
3 * J & W/CLAMSHELL
3 AFTER
3 COMMON
3 DERRICK
3 DOWN
3 FORWARD
3 HOLDING
3 LISTED
3 PLATE
3 REQUIREMENT

80 AND
37 DIPPER
32 TM
28 REAR
19 B
18 TRUCK
16 WHEN
14 ON
13 DUMP
13 REFER
11 CLAMSHELL
11 REFERENCE
10 DUMPING
9 WILL
8 LCAD
8 PUSH
7 APPLY
7 OR
6 BACKHOE
6 LIFTED
6 WITHIN
5 CAB
5 HIGH
5 MODEL
5 POINT
4 * J & AND
4 * J & LCAD
4 ALLOWING
4 CONDITIONS
4 O
4 EASE
4 HANDLING
4 LOCATED
4 NUMBER
4 PERFORM
4 STRUCK
4 USE
3 * J & BRAKE
3 * J & ENGAGE
3 * J & POSITION
3 ALWAYS
3 BANK
3 CONTROL
3 DONE
3 ENGAGE
3 FROM
3 IF
3 MATERIAL
3 PREVENT
3 RETRACT

79 TO
34 LEVER
30 FIG
24 BRAKE
19 CRANE
17 BE
16 WITH
14 FULL
13 MAINTENANCE
12 CLUTCH
11 CU
11 SO
10 HOIST
8 BRAKES
8 ORGANIZATIONAL
8 REFERENCES
7 AT
7 RAISE
6 BITE
6 PERFORMANCE
5 * J & DRUM
5 CRANE-SHOVEL
5 LIFTING
5 OPERATION
5 STOCKPILE
4 * J & CRANE
4 * J & MOUNTED
4 AND/OR
4 CORRESPONDENCE
4 DEPRESS
4 ENGR
4 III
4 LOWER
4 OPEN
4 PERFORMED
4 SUBCOURSES
4 VARY
3 * J & CLAMSHELL
3 * J & KECP
3 * J & REFERENCE
3 AMERICAN
3 CAST
3 DATA
3 DOOR
3 ENOUGH
3 FOUND
3 INTO
3 MEASURED
3 RAISED
3 SERVICES

46 DRUM
34 CF
30 IS
22 BUCKET
18 IN
17 EQUIPMENT
15 ACTE
14 RELEASE
13 MANUAL
12 SPECIFIC
11 FOR
11 VC
5 AS
8 CONSTRUCTION
8 COVER
8 TASK
7 PACK
6 * J & 65-3810-288-12
6 BY
6 STOP
5 * J & OPERATOR'S
5 EARTH
5 LOADED
5 OPERATIONS
5 TOWER
4 * J & FRONT
4 * J & TYP
4 CAPACITY
4 CRAWLER
4 DUFFING
4 GIVEN
4 INSTALLED
4 MAKE
4 OPPOSITE
4 PILE
4 SWINGING
4 VOLUME
3 * J & CRANE-SHOVEL
3 * J & MEASURES
3 * J & SWING
3 ANGLE
3 CLEAR
3 DEPTH
3 DRAGGING
3 FILL
3 HOLD
3 KEEP
3 MINUTES
3 PAGE
3 SET

1005 WORD LISTING/DESCENDING FREQUENCY

DATE 80259 1726 PAGE 3

COUNT1 WORD1

COUNT2 WORD2

COUNT3 WORD3

COUNT4 WORD4

1 ATTACHMENTS
 1 BEING
 1 CABLES
 1 CAPTION
 1 CLOSERS
 1 CLOSING
 1 CROWDED
 1 DIG
 1 DOGS
 1 EXCAVATED
 1 FLOWING
 1 GRADUALLY
 1 HEE
 1 INSTRUCTION
 1 LEVEL
 1 MAN-J
 1 MEN
 1 MOVEMENT
 1 NEXT
 1 OPERATE
 1 PERSON-J
 1 PRESS
 1 REEL
 1 SHOT
 1 STIFF
 1 SPOTTED
 1 STICK
 1 SWINGS
 1 TANCE
 1 THIS
 1 TRK
 1 UNWINDING

1 BACK-J
 1 BETWEEN
 1 CAN
 1 CENTER
 1 CLAMHELL
 1 CON-J
 1 CUT
 1 DIRECTLY
 1 DROPPING
 1 EXTENSION
 1 FULL
 1 HALF
 1 HYD
 1 INTERVENING
 1 LEVERS
 1 MACHINE
 1 MORE
 1 MID
 1 OBSTACLES
 1 PASS
 1 PERSONNEL
 1 PROPER
 1 RELEASING
 1 SIDES
 1 SLAM
 1 START
 1 STOCK
 1 SWITCH
 1 TAUT
 1 TION
 1 TU
 1 USED
 1 WORK

1 BEEN
 1 BEYOND
 1 CASTING
 1 CHINE
 1 CLOSE
 1 COME
 1 DE-J
 1 DIS-J
 1 EMPTY
 1 FAR
 1 G
 1 HARNISCHFEGER
 1 IMPORTANT
 1 LENGTH
 1 LOW
 1 MANJNL
 1 MOST
 1 NECESSARY
 1 CONSTRUCTIONS
 1 PASSES
 1 PLAY
 1 PULLED
 1 ROTATION
 1 SIMUL-J
 1 SNAP
 1 STARTS
 1 STOPS
 1 TAKE
 1 TEETH
 1 TOP
 1 UNDER
 1 W/CLAMHELL
 1 WORKIN #

1 BEFORE
 1 BIGGER
 1 CAUSE
 1 CLAM-J
 1 CLOSED
 1 CONTINUOUSLY
 1 DEPRESSED
 1 DO
 1 EXCAVA-J
 1 FIRMLY
 1 G
 1 HAVE
 1 INCHES
 1 LESS
 1 LOWERED
 1 MENT
 1 MOVE
 1 NEL
 1 OPENED
 1 REC-J
 1 PRACTICE
 1 CLIPMENT
 1 SHELL
 1 SIMULTANE- JOUSLY
 1 SPECIFICATIONS
 1 STEP
 1 SWIN
 1 TAKEN
 1 THEN
 1 TRIP
 1 UNLOADS
 1 WIDTH
 1 WORKING

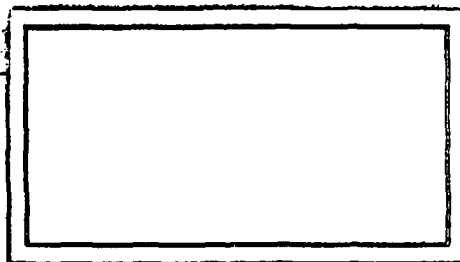
HEADQUARTERS

DATA CONTROL NUMBER

ISS NO / PROJECT NO

UNITED STATES ARMY TRAINING AND DOCTRINE COMMAND

FORT MONROE, VIRGINIA 23651



PREPARED BY: OPERATIONS DIV, DPFO

FORM
ATDP Oct 80 109-1

Feb 80 edition may be used
until exhausted.

COPY ____ OF ____ COPIES

END

DATE
FILMED

8 8 2

DTIC