

DTIC FILE COPY

AD A117172

③

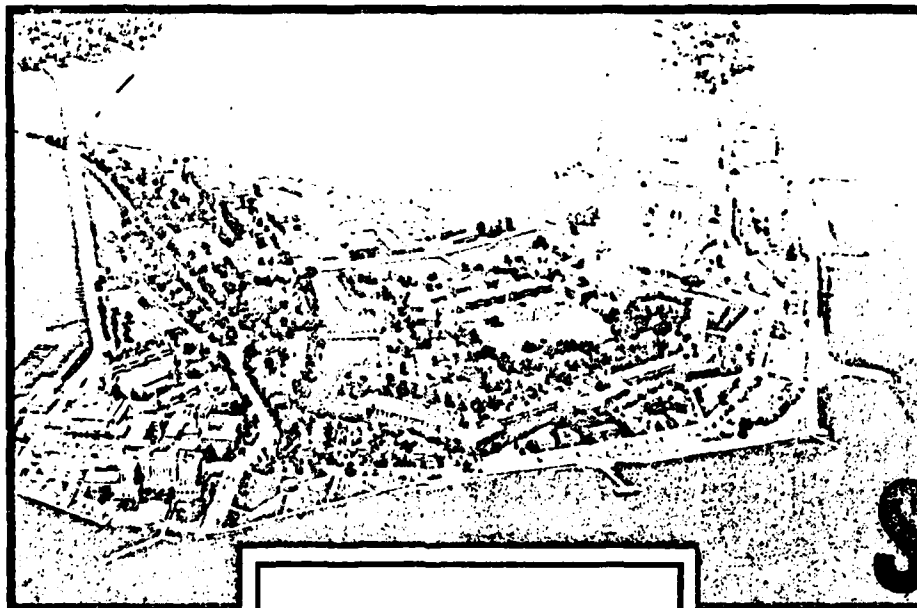
HEADQUARTERS

DATA CONTROL NUMBER

100 NO / PROJECT NO

UNITED STATES ARMY TRAINING AND DOCTRINE COMMAND

FORT MONROE, VIRGINIA 23651



Copy available to DTIC does not permit fully legible reproductions

DTIC ELECTE
JUL 21 1982

S D F

Word Frequency Analysis
MOS: 61C
Skill Levels 1 & 2

This document has been approved for public release and sale, its distribution is unlimited.

PREPARED BY: OPERATIONS DIV, DPFO

ATDP FORM 109-1 Oct 80
Feb 80 edition may be used until exhausted.

COPY ___ OF ___ COPIES

82 07 20 092

DISCLAIMER NOTICE

THIS DOCUMENT IS BEST QUALITY PRACTICABLE. THE COPY FURNISHED TO DTIC CONTAINED A SIGNIFICANT NUMBER OF PAGES WHICH DO NOT REPRODUCE LEGIBLY.

UNCLASSIFIED

SECURITY CLASSIFICATION OF THIS PAGE (When Data Entered)

REPORT DOCUMENTATION PAGE		READ INSTRUCTIONS BEFORE COMPLETING FORM
1. REPORT NUMBER 61C	2. GOVT ACCESSION NO. ADA117 172	3. RECIPIENT'S CATALOG NUMBER
4. TITLE (and Subtitle) Word Frequency Analysis MOS: 61C Skill Level 1/2		5. TYPE OF REPORT & PERIOD COVERED Final
		6. PERFORMING ORG. REPORT NUMBER
7. AUTHOR(s) Dr. Alexander A. Longo		8. CONTRACT OR GRANT NUMBER(s)
9. PERFORMING ORGANIZATION NAME AND ADDRESS Training Developments Institute ATTN: ATTC-DOR Fort Monroe, VA 23651		10. PROGRAM ELEMENT, PROJECT, TASK AREA & WORK UNIT NUMBERS
11. CONTROLLING OFFICE NAME AND ADDRESS Training Developments Institute ATTN: ATTC-DOR Fort Monroe, VA 23651		12. REPORT DATE May 1981
		13. NUMBER OF PAGES 16
14. MONITORING AGENCY NAME & ADDRESS (if different from Controlling Office)		15. SECURITY CLASS. (of this report) Unclassified
		15a. DECLASSIFICATION/DOWNGRADING SCHEDULE
16. DISTRIBUTION STATEMENT (of this Report) Approved for Public Release; Distribution is unlimited.		
17. DISTRIBUTION STATEMENT (of the abstract entered in Block 20, if different from Report)		
18. SUPPLEMENTARY NOTES		
19. KEY WORDS (Continue on reverse side if necessary and identify by block number) MOS Vocabulary Readability Comprehension of text Curriculum Development		
20. ABSTRACT (Continue on reverse side if necessary and identify by block number) This report contains a frequency count of the basic vocabulary contained in the Army Soldier's Manual for the MOS/Skill Level designated in the title (item 4). This frequency count reflects only skill levels I/II and excludes the common tasks and those sections which are redundant/incidental to vocabulary analysis (e.g. table of contents, appendices, references, charts, etc). This vocabulary is only a sampling of the entire MOS vocabulary and is subject to change with MOS changes.		

CD FORM 1473 EDITION OF 1 NOV 65 IS OBSOLETE

UNCLASSIFIED

SECURITY CLASSIFICATION OF THIS PAGE (When Data Entered)

Contents and General Information

1. The Word Frequency Analysis (WFA) reports were reproduced exactly as generated via computer printout. The prime users of this document were fully cognizant of its contents and required no special instructions for interpretation. However, for the sake of other readers, the following brief description of contents is provided.

2. The WFA reports for most MOS are divided as follows:

- o Skill Level I
- o Skill Level II

However, due to the way some Soldier's Manuals are constructed, the WFA for some MOS have both Skill Levels merged into one report. Each Skill Level is subdivided into two sections.

a. Alphabetic Rank: this section lists all terms in alphabetical order (left to right). To the left of each term is the frequency which that term appears in the text submitted for word frequency count.

b. Frequency Rank: this section lists the same terms contained in the first section of the report but reranked in accordance with their frequency of appearance from highest to lowest. Also, the terms are ranked alphabetically within the same frequency level.

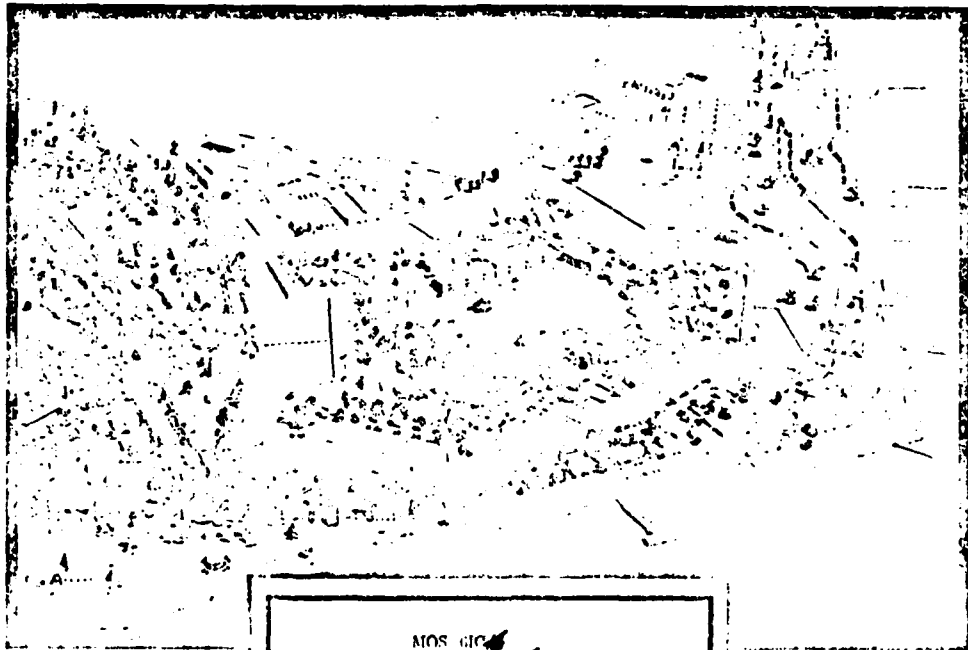
3. It should be noted that the basis of this WFA is the Soldier's Manual. Consequently, this vocabulary set is only a sampling of the entire MOS vocabulary and is subject to change.

Accession For	
NTIS GRA&I	<input checked="" type="checkbox"/>
DTIC TAB	<input type="checkbox"/>
Unannounced	<input type="checkbox"/>
Justification	
By	
Distribution/	
Availability Codes	
Dist	Avail and/or Special
A	23 G



HEADQUARTERS
UNITED STATES ARMY TRAINING AND DOCTRINE COMMAND
FORT MONROE, VIRGINIA 23651

New MOS
DATA CONTROL NUMBER _____
JOB NO / PROJECT 1.0



WFA
JUN 8 1981
DRAD

MOS NO
5C102

PREPARED BY: OPERATIONS DIV, DPFO

ATDP FORM 109 Replaces ATDS 118, Jul 73, which is obsolete

COPY _____ OF _____ COPIES

COUNT1 WORDS

HIG WORD LISTING/ASCENDING SCIENCE
COUNT2 WORDS

8 CENTER
2 CLEANERS
1 CLIMB
13 CLIMB
1 CLAMP
24 CLEAN
22 CLEARANCE
5 CLOSE
3 CLOTH
1 COLLECT
1 COMPENSATION
17 COMPONENTS
11 COMPRESSION
1 CONNECT
1 CONTACT
1 CONTROL-SHAFT
1 COIL
2 COILS
1 CORRECTED
41 COVER
2 CRANK
10 CRANKPIN
3 CROSS
2 CROSSOVER
1 CYLINDER
5 DA
14 DAMPER
2 DEEP
1 DEFLECTOR
1 DENSITY
1 DEPRESSING
3 DETERMINED
1 DEVICES
24 DIAMETER
2 DIFFERENCE
1 DIP
1 DIRT
16 DISASSEMBLY
1 DISMANTLE
3 DISTORTION
1 DOWEL
4 DRAIN
4 DRIVEN
3 DRY
1 DUTIES
1 EASY
1 EFFECTIVE
10 END
1 ENGINES
4 ENGINEER

1 ENGINEERING
1 CHANGING
11 CHECK
2 CHIMNEY
1 CHIPPING
1 CLEANED
7 CLEARANCES
2 CLOSED
9 CLUTCH
1 COMBINATION
3 COMPLETE
1 COMPOUND
1 COMPRESSOR
41 CONNECTING
4 CONTAINER
1 CONTROLLED
6 COOLANT
1 COPPER
2 CORRESPONDING
8 COVERS
2 CRANKCASE
22 CRANKSHAFT
2 CROSS
1 CUMMINS
27 CYLINDER
9 DAMAGE
1 DATA
1 DEEPER
1 REFLECTOR
1 DEPARTURE
1 DEPTH
1 DEVELOPS
1 DIAGNOSE
1 DIAPHRAGM
1 DIFFERENCES
1 DIRTY
13 DISASSEMBLY
3 DISCARD
1 DISPLACED
1 DISTRIBUTION
1 DOWELS
1 DRAINAGE
1 DROOP
9 DUSKS
2 DUTY
1 ECCENTRIC
1 EITHER
1 ENERGIZE
50 ENGINEER
15 ENGINES

9 CHAIN
40 CHAMBER
1 CHUCKED
1 CHUCKER
1 CHUCKER
1 CHUCK
14 CLEANING
4 CLEVIS
1 CLOSELY
5 COCKS
1 COMMANDS
1 COMPLETELY
2 COMPRESS
2 CONNECTION
4 CONNECTIONS
1 CONTINUE
2 CONTROLS
9 COOLER
1 COPY
1 CORROSION
1 CRACKED
1 CRANKED
1 CREWMEMBERS
6 CROSSHEAD
21 CUMMINS
11 CYLINDERS
7 DAMAGED
1 DEAD
5 DEFECTIVE
1 DELIVER
1 DEPOSITS
1 DESIGNED
1 DEVIL
1 DIAGRAM
1 DIE
3 DIFFERENTIAL
4 DEFECT
3 DISASSEMBLED
1 DISCARDED
1 DISRUPTION
5 DO
10 DOWN
1 DRIP
1 DROP
1 DUE
64 F
1 EDGES
1 FLOW
2 ENCASE
1 ENGINEER/CHIEF
1 ENLARGEMENT

1 CHANGE
1 CHANGING
2 CHUCKERS
1 CIRCUMFERENCE
1 CLASSIFIED
1 CLEANLINESS
1 CLOGGED
1 CLOSING
1 COILS
1 COMMUNICATING
2 COMPONENT
9 COMPRESSED
47 COMPLETIONS
1 CONSUMES
21 CONTROL
4 CONVERTER
4 COOLING
1 COPY
1 COTTER
9 CRACKS
1 CRANKING
1 CRITERIA
3 CROSSHEADS
9 DIP
75 D
1 DAMAGING
3 DECREASE
3 DEFECTS
9 DELIVERY
3 DEPRESS
25 DETERMINE
4 DEVICE
4 DIAL
29 DIESEL
1 DILUTION
3 DIRECTION
1 DISASSEMBLING
4 DISCONNECT
1 DISTORTED
1 DOCS
1 DOWNWARD
17 DRIVE
1 DROPLIGHT
3 DURING
13 EACH
1 EFFECT
2 ELEMENTS
215 ENGINE
2 ENGINEERING
1 ENOUGH

MOS WORD LISTING/ASCENDING SEQUENCE
 COINTEA WORDS

COINTEA WORDS

1 ENTERED
 1 ENIAL
 1 ENHANCE
 1 ENHANCE
 1 ENHANCE
 1 ENHANCE
 1 EXCESS
 17 EXHAUST
 3 EXTERNAL
 55 F
 1 FAILURE
 2 FEELER
 10 FILTER
 1 FINELY
 2 FIXTURE
 1 FLAT
 1 FLYWIGHTS
 2 FOLLOVER
 14 FOOT-PRINTS
 4 FOOT
 2 FORWARD-REVERSE
 3 FREELY
 14 FRONT
 1 FUSE
 1 GALLING
 10 GASKETS
 25 GEAR
 4 GLASS
 1 GOVERNOR
 2 GREASE
 4 GROMMETS
 1 GR
 1 GR
 1 GR
 6 GRINDABLE
 1 GRINDING
 1 GRINDERS
 1 HEIGHT
 12 HOLE
 3 HOLES
 1 HOSE
 23 HOUSING
 21 I
 11 IMPLER
 1 INNERSE
 144 IN
 3 INCH-ROUNDS
 1 INCOMPLETELY
 1 INCREASE
 1 INCREASE
 6 INCREMENT

2 ENHANCE
 1 ENHANCE
 1 ENHANCE
 1 ENHANCE
 1 EXACTLY
 14 EXCESSIVE
 3 EXPANSION
 3 EXTREME
 1 EXPLICATE
 1 FALL
 1 FLY
 2 FILTERS
 2 FILTER
 4 FIXTURE
 1 FLOOR
 20 FLYWHEEL
 9 FOLLOWING
 147 FOR
 1 FORMS
 2 FORM
 1 FREQUENTLY
 48 FUEL
 38 G
 3 GAP
 51 GAP
 1 GENERATOR
 1 GLASS--
 20 GOVERNOR
 3 GREATER
 4 GRINDING
 2 GS
 38 H
 3 HAND
 2 HARROW
 7 HAVING
 3 HEADS
 5 HIGH
 3 HOLE
 1 HOLE
 2 HOUR
 1 HUB
 2 IDENTIFIED
 44 IF
 2 IMPELLER
 1 INACCURATE
 12 INCHES
 3 INCREASE
 1 INDICATES
 1 INDICATE
 60 INDICATOR

1 ENTRY
 10 EQUIPMENT
 1 ESTABLISHED
 1 ENTRY
 9 EXCEED
 1 EXCESSIVELY
 1 EXTEND
 4 EVEROLT
 1 FACE
 4 FAN
 14 FIELD
 1 FINISHED
 3 FIT
 1 FLANGE
 8 FLOW
 2 FOLLOW
 1 FOLLOWS
 1 FORCED
 3 FORWARD
 5 FRAME
 12 FRESH
 11 FULL
 30 GAGE
 14 GARRISON
 1 GRAP--REPLACE
 1 GRIPS
 26 GY
 2 GRATIALLY
 3 GRIND
 3 GROOVES
 18 GUIDE
 2 HALF
 4 HANDBOOK
 19 HAS
 1 HE
 4 HEAT
 1 HIGH-LOW
 1 HIGH-DOWN
 2 HOLES
 1 HOPIEY
 2 HUNTING
 1 IDENTIFY
 7 II
 1 IMPELLERS
 52 INCH
 5 INCHES
 1 INCREASING
 2 INDICATION
 15 INDIVIDUAL
 5 INSPECTORS

15 FAVOURMENT
 2 EQUIPMENT
 1 EQUIPMENT
 1 EVIDENCE
 1 EXCESSIVE
 2 EXCHANGER
 1 EXTERIOR
 2 EYES
 1 FACILITY
 3 FAMILTY
 4 FAN
 1 FIGHT
 7 FIRING
 1 FISH
 1 FLANGE
 1 FLYWIGHT
 1 FOLLOVED
 3 FOOT-ROUND
 2 FOOT-ROUND
 4 FORWARD-NEUTRAL-REVERSE
 3 FOOT
 70 FROM
 1 FURNISHED
 11 GAGES
 11 GASKET
 4 GEARS
 4 GIVEN
 1 GY
 1 GRAY
 1 GOLF
 1 GRIND
 9 GUIDES
 1 HALF-FULL
 1 HANDLE
 1 HANG
 1 HANG
 54 HEAD
 7 HEAVY
 1 HIGHER
 5 HOLDER
 1 HONEY
 1 HOOPS
 3 HYDROSTATIC
 4 IDENTIFY
 2 IMMEDIATELY
 1 IMPORTANCE
 1 INCH-ROUND
 1 INCLUDE
 1 INCREMENT
 4 INDICATOR
 1 IN
 1 ENTRY

NO. WORD LISTING/ASCENDING SEQUENCE
(COUNT) WORDS

COUNT1 WORD1

COUNT2 WORD2

COUNT3 WORD3

3 INLET
2 INSURE
95 INSURECT
15 INSURECTION
1 INSTALLATIONS
4 INSTRUCTION
11 INSURE
5 INTERNAL
13 INTO
15 IT
3 JACKSCREW
1 JUMPER
1 KEED
1 KNOB
1 LACKS
5 LAPPING
1 LAYING
1 LEAKAGE
5 LEFT
2 LEVELS
12 LIFTING
1 LIMITER
5 LINERS
3 LISTED
1 LOBS
14 LOCATION
1 LOCKPLATE
1 LOGBOOK
10 LOW
1 LUBRICANT
1 MACHINED
10 MAIN
4 MAKE
8 MANIFOLD
1 MANIPULY
1 MANY
4 MARKS
1 MATTED
1 MEASURABLE
4 MEASURING
2 MEET
2 MEYER
3 MICRO-ADJUSTMENT
3 MICROMETERS
6 MINIMUM
1 MISCELLANEOUS
17 MIXED
17 MOTORS
1 MOVED
1 MUTUATION

4 IMPER
1 INSERTING
1 INSPECT--
1 INSPECTIONS
8 INSTALLED
3 INSTANTIONS
6 INTAKE
1 INTERNALLY
81 IS
17 ITEMS
1 JOINT
2 JUST
3 KEY
1 KNOCKS
1 LANTERN
2 LARC-XV
5 LEAD
3 LEAKING
4 LENGTH
12 LEVER
1 LIGHT
2 LIMITS
6 LINES
1 LO
3 LOCKAGE
1 LOCKING
1 LOCKS
3 LOGSHEET
8 LOWER
18 LUBRICATING
1 MACHINERY
4 MAINTAIN
7 MAINTENANCE
3 MANIFOLDS
6 MANIPULS
34 MARINE
1 MATCH
4 MAYHEM
25 MEASURE
2 MECHANIC
2 MEETING
1 MEETING
1 MICROADJUSTING
1 MICROPOINT
1 MINOR
1 MISLEAF
1 MIXTURE
1 MIXTURE
1 MIXTURE
12 N

2 IMPROBATIVE
1 INSERTS
3 INSPECTED
83 INSTALL
10 INSTALLING
2 INSTRUMENTS
1 INTERCHANGE
5 INTERPRET
1 ISOLATE
6 ITS
4 JOURNAL
15 K
2 KEYWAY
2 KNURLED
3 LAP
4 LARGER
4 LEAF
7 LEAKS
3 LESS
4 LEVERS
1 LIGHTED
3 LINE
1 LINK
8 LOAD
1 LOCATED
10 LOCKOUT
4 LOCKUP
7 LOOSEN
2 LOWERING
3 LUBRICATION
2 MADE
2 MAINTAINED
2 MALFUNCTIONS
1 MANOMETER
1 MANUFACTURER
10 MARK
17 MATERIALS
12 MAY
1 MEASURED
39 MECHANICS
1 MEETS
2 METHOD
1 MICROADJUSTMENT
1 HIGHWAY
3 MINUTE
4 MISPRINTS
4 MIXED
1 MOUNTING
1 MOVING
45 NECESSARY

3 LABEL
4 INSURE
1 INSPECTING
1 INSTALLATION
1 INSTALLING--
4 INSUFFICIENT
2 INTERMEDIATE
2 INTERVALS
1 ISOLATED
17 J
1 JOURNALS
1 KEEL
5 KIT
0 L
1 LAPPED
1 LAY
4 LEAK
2 LEAST
7 LEVER
4 LEFT
1 LIMIT
31 LINER
4 LINKAGE
1 LOADED
1 LOCATING
1 LOCKMITS
4 LOG
1 LOSS
8 LUMP
8 M
5 MAGNETING
94 MAINTENANCE
1 MANUFACTURERS
62 MANUAL
36 MANUFACTURERS
1 MARKED
4 MATING
1 MEAN
2 MEASUREMENTS
3 MECHANICAL
2 METAL
2 MICRO-ADJUSTING
20 MICROMETER
1 MILD
3 MINUTES
1 MIXED
1 MOTOR
3 MOVE
162 MUST
1 NEED

EMMEL WORDS	NUM WORD LISTING/ASCENDING SEQUENCE	EMMEL WORDS	NUM WORD LISTING/ASCENDING SEQUENCE	EMMEL WORDS	NUM WORD LISTING/ASCENDING SEQUENCE
0 NEEDLE	1 NEEDING	5 NEELE	5 NEELE	21 NEM	21 NEM
1 NICK	3 NICKS	1 NIT	1 NIT	1 NEMERDYNAMIC	1 NEMERDYNAMIC
3 NORMAL	5 NORMALLY	43 NIT	43 NIT	14 NINE	14 NINE
2 NOTIFIABLE	1 NOTICE	25 NOZZLE	25 NOZZLE	1 NOZZLES	1 NOZZLES
4 NUMBER	1 NUMBERED	1 NUMBERS	1 NUMBERS	10 NLT	10 NLT
5 NUTS	14 N	2 OBTAIN	2 OBTAIN	1 OCCUR	1 OCCUR
3 OFFERS	6 OF	255 OF	255 OF	2 OFF	2 OFF
2 OFFICE	99 OIL	1 OIL	1 OIL	103 OA	103 OA
7 ONE	1 ONE-EIGHTH	1 ONE-SIXTYEIGHTH	1 ONE-SIXTYEIGHTH	15 OPEN	15 OPEN
2 OPENING	2 OPENINGS	1 OPENS	1 OPENS	7 OPERATE	7 OPERATE
3 OPERATED	1 OPERATES	15 OPERATING	15 OPERATING	11 OPERATION	11 OPERATION
9 OPERATIONAL	1 OPERATOR	1 OPERATOR'S	1 OPERATOR'S	1 DEPOSIT	1 DEPOSIT
146 OP	13 ORDER	1 ORPERS	1 ORPERS	1 ORGANIZATIONAL	1 ORGANIZATIONAL
7 OFFICE	3 OFFICES	8 OTHER	8 OTHER	14 OUT	14 OUT
5 OUT-ORDERING	3 OUTER	1 OUTLET	1 OUTLET	1 OUTLINED	1 OUTLINED
2 OUTLET	12 OUTSIDE	1 OUTWARD	1 OUTWARD	9 OVER	9 OVER
8 OVERHAUL	1 OVERHEAT	4 OVERHEATING	4 OVERHEATING	3 P	3 P
4 PACK	2 PACKING	1 PACKING	1 PACKING	2 PAN	2 PAN
2 PAIRS	1 PARAGRAPH	6 PART	6 PART	1 PARTICLES	1 PARTICLES
50 PARTS	1 PASS	2 PASSAGES	2 PASSAGES	4 PATTERN	4 PATTERN
1 PAY	2 PEAK	1 PEN	1 PEN	6 PENCIL	6 PENCIL
1 PENCIL	2 PENETRATING	5 PER	5 PER	1 PERFECTLY	1 PERFECTLY
25 PERFORMANCE	4 PERFORMANCE	72 PERFORMED	72 PERFORMED	4 PERFORMING	4 PERFORMING
6 PERIPHER	1 PERTINENT	6 PILE	6 PILE	24 PIN	24 PIN
1 PINCHING	2 PINS	1 PISTLE	1 PISTLE	17 PIPE	17 PIPE
3 PINE	1 PISTON	66 PISTON	66 PISTON	1 PITTING	1 PITTING
21 PLACE	1 PLACED	1 PLAME	1 PLAME	3 PLANET	3 PLANET
1 PLANT	5 PLASTIC	2 PLATE	2 PLATE	1 PLATES	1 PLATES
3 PLATES	2 PLAY	4 PLUG	4 PLUG	13 PLOTS	13 PLOTS
44 PLUNGER	5 PLYMET	1 POCKETS	1 POCKETS	1 POCKETS-IE	1 POCKETS-IE
2 POINT	1 POINTER	2 POINTS	2 POINTS	2 POLISHED	2 POLISHED
1 POOR	1 POPPING	1 POSITIV	1 POSITIV	25 POSITION	25 POSITION
3 POSITIONING	3 POSITIVE	1 POSSIBLE	1 POSSIBLE	4 POINTS	4 POINTS
1 POWDER	2 POWER	5 PRECISION	5 PRECISION	1 PREFABRICATED	1 PREFABRICATED
1 PREDIAD	1 PREOPERATIONAL	1 PREPARING	1 PREPARING	4 PRESCRIBED	4 PRESCRIBED
2 PRESENT	2 PRESENTED	1 PRESENTS	1 PRESENTS	2 PRESS	2 PRESS
4 PRESSING	42 PRESSURE	2 PRESSURE-TIME	2 PRESSURE-TIME	8 PRESSURES	8 PRESSURES
1 PRESSURE-TIME	1 PRESSURIZING	2 PREVENT	2 PREVENT	1 PRIME	1 PRIME
2 PRIOR	1 PROGRAM	2 PROBLEM	2 PROBLEM	2 PROCEDURE	2 PROCEDURE
10 PROPERTIES	1 PROGRESS	1 PRODUCE	1 PRODUCE	1 PROMPTLY	1 PROMPTLY
3 PROPER	3 PROPERLY	5 PROPULSION	5 PROPULSION	1 PROMPTLY	1 PROMPTLY
2 PROPERTIES	1 PROPOSITION	1 PROVE	1 PROVE	27 PROVIDED	27 PROVIDED
12 PSI	8 PT	4 PULL	4 PULL	2 PIPLES	2 PIPLES
4 PULLY	111 PUMP	1 PUMPED	1 PUMPED	1 PLYING	1 PLYING
6 PUNCH	1 PUNCTURES	1 PUNCH	1 PUNCH	6 PUSHERS	6 PUSHERS
6 PUNCHES	1 PUNT	1 PYROMETER	1 PYROMETER	2 PYROMETERS	2 PYROMETERS
2 P	1 QUICKLY	2 R	2 R	4 RACE	4 RACE
2 RACE	10 RACK	2 RAGS	2 RAGS	2 RACE	2 RACE
2 RACE	1 RATE	2 RATED	2 RATED	2 RAY	2 RAY
1 RACE-ENGAGE	1 REACH	8 READ	8 READ	2 READINGS	2 READINGS

COUNT	WORD	COUNT	WORD	COUNT	WORD	COUNT	WORD
1	REARREST	3	REARS	4	REAR	1	REASONS
4	REASSEMBLE	1	REASSEMBLY	3	REARIED	2	REACTABLE
1	RECESSES	1	RECHECK	1	RECOMMENDED	4	REARROW
1	RECORDED	1	RECORDING	1	RECIPE	2	REARRE
1	RECORD	13	REFERENCE	32	REFERENCES	1	RECOVER
1	REGULATING	4	REGULATOR	1	REINSTALL	2	REJECTED
6	RELEASER	1	RELATION	3	RELEASE	2	RELIFE
1	REMAINING	1	REMAINING	1	REMEASURING	13	REMOVAL
174	REMOVE	1	REMOVE--	7	REMOVED	1	REMOVED
13	REMOVING	41	REPAIR	2	REPAIRED	4	REPAIRS
1	REPAIRS/REPLACEMENTS	1	REPAIRABLE	4	REPEAT	47	REPLACE
16	REPLACED	17	REPLACEMENT	6	REPLACING	1	REPORT
3	REPLICE	1	REQUIRE	34	REQUIRED	2	REQUIREMENTS
3	REQUIRE	2	REQUIRE	1	RESEAL	1	RESPONSIVE
1	REST	2	RESTRICT	6	RESULT	1	RESPONSE
4	RETAINER	4	RETAINING	1	RETURN	1	RESURFACE
12	REVERSE	1	REVOLUTIONS	3	RIGHT	1	RESURF
26	RING	17	RINGS	1	RISE	21	RESURF
54	ROD	6	RODS	2	RISK	2	RESURF
6	ROCK	1	ROCKED	1	ROTTEN	1	RETATION
1	ROD	3	ROTTING	1	ROUTINELY	12	REIN
4	ROHS	1	ROTS	4	RUBBER	6	REIN
4	RUNNING	2	RUBOUT	5	RUNE	2	RUST
5	S	1	SAFETY	2	SALT WATER	7	SAFE
6	SCAVENGER	2	SCAVENGING	1	SCHEDULED	3	SCAFF
3	SCORING	9	SCRATCHES	4	SCREEN	2	SCREENS
14	SCREW	4	SCREWS	6	SEA	10	SEAL
6	SEALS	73	SEAT	2	SEATED	7	SEATING
8	SEATS	1	SECOND	1	SECONDS	41	SECTION
4	SECTIONS	2	SECURE	4	SECURED	1	SECTION
1	SECTMENT	1	SEE	1	SEIZED	1	SETHRE
34	SECTOR	2	SEPARATE	12	SERVICE	1	SERVICEABILITY
10	SERVICEABILITY	1	SERVICES	13	SET	4	SETS
2	SETSCREEN	1	SETTING	1	SEVEN	1	SEVERAL
45	SHIRT	1	SHIRT--REPLACE	5	SHIFTS	1	SHIFTS--REPLACE
1	SHIRT	11	SHOUL	8	SHELLS	3	SHIM
12	SHIMS	1	SHIPPING	36	SHOP	1	SHOP/VESSEL
2	SHIRT	7	SHOULD	1	SHOPPERS	2	SHOW
1	SHIPPING	2	SHOW	1	SHOWS	1	SHUT
2	SHUTDOWN	12	SIDE	1	SHOT-GROOVE	3	SIGNS
1	SILICONE	1	SIEVE	2	SKIRT	12	SLEEP
11	SILICOES	1	SIDE	1	SLIGHT	1	SLOT
4	SIMILAR	3	SIMPLE	2	SNAP	2	SNIPPER
5	SO	2	SMOKE	1	SNAP	1	SECRET
1	SOCKETS	5	SOFT	2	SOLIDID	1	SECTION
8	SOLVENT	4	SOP	2	SOUND	7	SOURCE
2	SOLDER	33	SPECIAL	4	SPECIFIC	12	SPECIFICATIONS
1	SPECIFICATION	25	SPEED	1	SPECIFIC	1	SPINER
2	SPILL	4	SPINDLE	2	SPLINE	1	SPIN
1	SPITS	5	SPRAG	16	SPRAY	1	SPREAD

WORD WORD LISTING/ASCENDING SEQUENCE
COUNTA WORDS

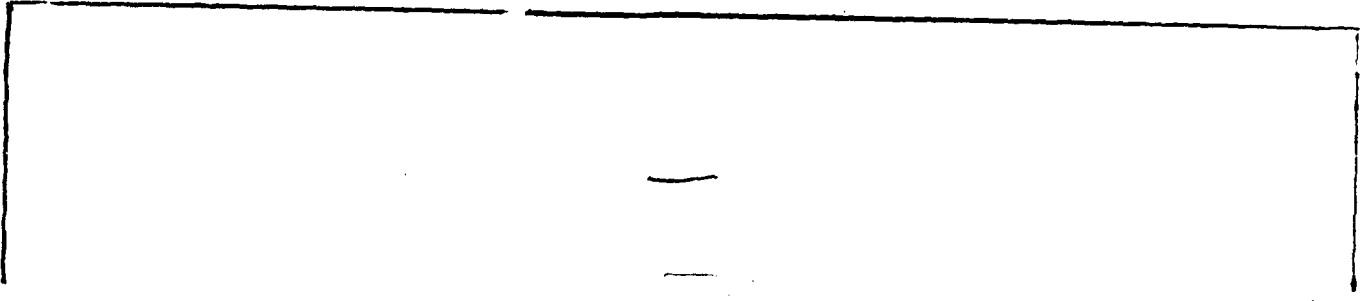
COUNTA WORDS

100 SPRING
 10 STAND
 4 STANDING
 19 STARTING
 2 STARTER
 1 STEP
 1 STECK
 1 STOPS
 1 STORAINERS
 1 STUCK
 2 SUCCESSFULLY
 3 SUFFICIENT
 3 SUPPLY
 3 SURF
 1 SYSTEM
 1 SYSTEMATIC
 3 TACHOMETER
 1 TANK
 174 TACK
 2 TACKLING
 14 TEST
 2 TESTS
 1 THEIR
 2 THERMOSTAT
 4 THICKNESS
 1 THREE
 6 THROUGH
 1 TIGHTLY
 1 TIMES
 116 TH
 2 THD
 16 THD
 4 THUNDER
 3 THUNDERSHOOT
 0 THUR
 5 THUR
 3 TYPES
 5 UNDERWAY
 1 UNPAD
 7 UP
 1 UPWARD
 1 URGENT
 114 VARY
 1 VAPOR
 3 VESSELS
 1 VISIBLY
 12 VV
 1 VV
 4 VV
 20 VV

4 SPRINGS
 4 STANDARD
 28 START
 1 STARTER
 1 STEEL
 2 STEP-BY-STEP
 12 STOP
 2 STRAIGHT
 1 STROKE
 1 STUB
 1 SUCCESSFUL
 1 SUDDEN
 12 SUPPORT
 9 SURFACE
 1 SWITCH
 2 SYSTEMS
 3 TACK
 3 TAPER
 3 TECHNICAL
 16 TEMPERATURE
 1 TESTED
 15 THAN
 1 THEM
 3 THREE
 16 THIS
 1 THREE-QUARTER
 3 TIE
 6 TIME
 10 TIMING
 1 THIS
 19 TOOL
 18 THROUGH
 7 TRANSMISSION
 5 TROUBLESHOOTING
 1 TUBES
 1 THISTS
 2 U
 1 UNEQUAL
 6 UNSERVICABLE
 5 UPPER
 6 USE
 2 U
 28 VALVES
 2 VERTICAL
 11 VIBRATION
 1 VISUAL
 2 VV
 1 WAS
 2 WATCH
 1 WFLI

1 SOAP
 46 STANDARD
 3 STARTED
 1 STATED
 1 STEERING
 40 STEPS
 2 STOPPED
 1 STRAIGHTEDGE
 2 STROKES
 3 STROKETS
 3 SUCH
 1 SUN
 7 SUPPORT/GENERAL
 8 SURFACES
 2 SYMPTOMS
 4 T
 1 TAKING
 7 TARGET
 25 TECHNICIAN
 14 TEMPERATURES
 4 TESTER
 33 THAT
 1 THEY
 3 THEY
 2 THOROUGHLY
 12 THROTTLE
 3 TIGHT
 3 TING
 3 TIP
 164 TO
 34 TONKIN
 3 TORQUE
 1 TRAFFIC
 1 TRAIL
 5 TWO
 6 TWO
 1 UNBALANCED
 1 UNEVENLY
 11 UNEVEN
 2 UPRIGHT
 1 USED
 3 VACUUM
 1 VARIABLE
 31 VESSEL
 1 VISCOSITY
 17 VISUALLY
 1 WALK
 3 WALKER
 16 WATER
 2 WFLI

1 STALLS
 3 STANBY
 2 STARTER
 1 STATED
 3 STOP
 2 STOPPING
 1 STOPPING
 2 STRAINER
 1 STRONG
 1 STUBS
 5 SUCROSE
 6 SUPERVISION
 1 SUPERVISOR
 1 SUPPORTED
 14 SYSTEM
 5 TABLE
 2 TANK
 4 TANKETS
 6 TANKS
 2 TANKS
 2 TESTING
 525 THE
 8 THREE
 1 THICK
 1 THICK
 6 THROUGH
 9 THROUGH
 1 THROUGH
 1 TIPS
 3 TOLERANCES
 33 TONS
 1 TRACING
 3 TRAFFIC
 2 TRIMMING
 1 TRIMMER
 7 TUNE
 48 TUNER
 1 UNLESS
 2 UNUSUAL
 2 UPSIDE
 13 USING
 1 VACUUM
 3 VACUUM
 10 VESSELS
 12 VISC
 1 VOLTAGE
 1 WALK
 1 WALKER
 16 WATER
 2 WFLI



COUNT WORDS

COUNT WORDS

NO. WORD LISTING/ASCENDING SEQUENCE
COUNT WORDS

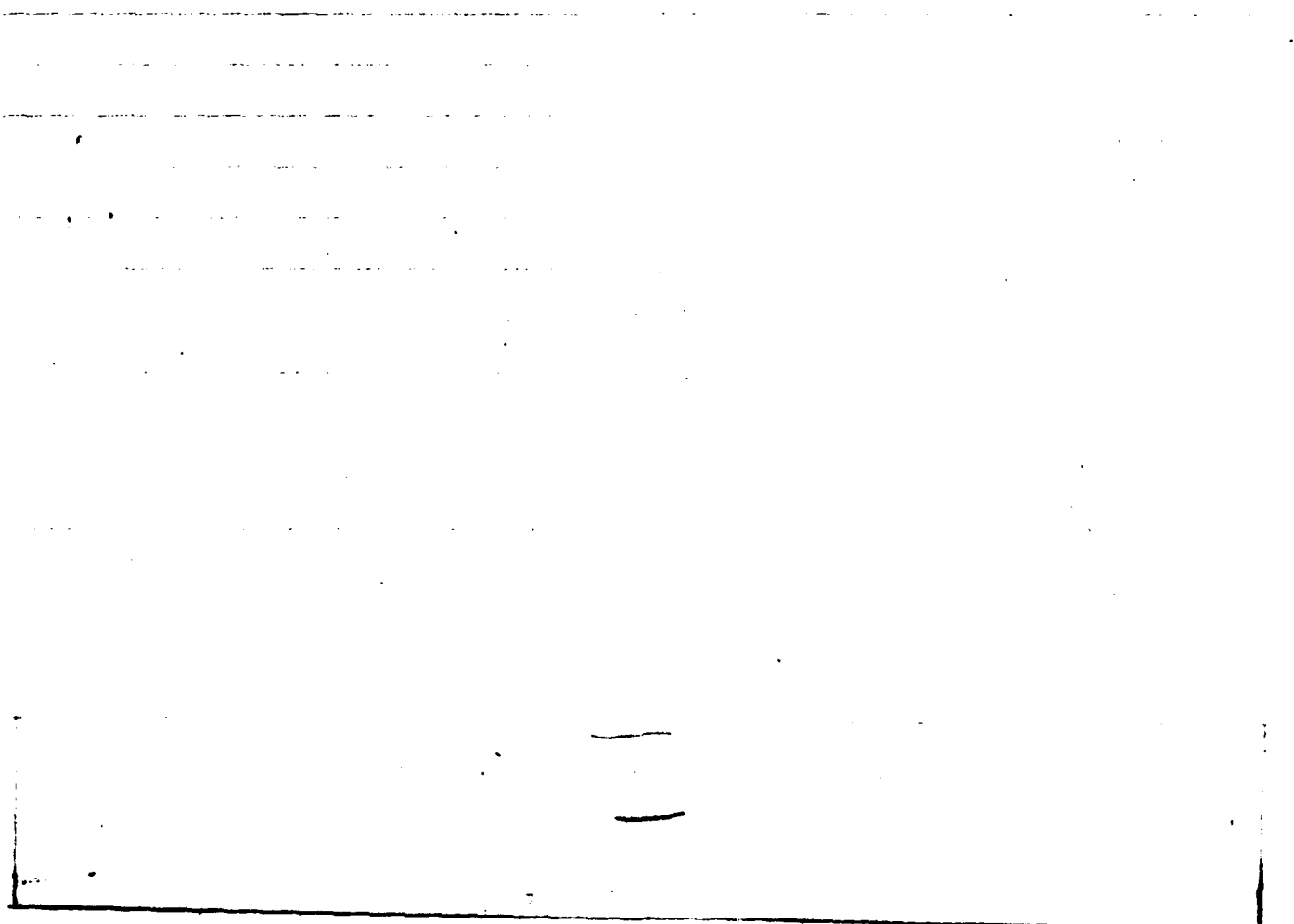
DATE 11/16/10 PAGE 8
COUNT WORDS

2 WIFE
13 WIFE
1 WIFE
1 WITHDRAW
1 WORK
1 WORKSHOP
5 WORKER

50 WHEN
1 WHITE
1 WIFE
1 WIFE
9 WITHIN
4 WORKBENCH
13 WORK
1 X

1 WHERE
77 WIFE
6 WIFE
7 WITHIN
1 WORKBENCH
1 WOULD
1 Y

1 WHEN
4 WINDOW
71 WIFE
1 WITHIN
2 WORKING
1 WOOD
7 Y
1 Z



NUM WORD LISTINGS/DESCENDING FREQUENCY
 COUNTE2 WORDS

COUNTE1 WORDS

216 THE
 216 ENGINE
 167 FOR
 146 IN
 133 A
 95 IMPROVE
 84 MAINTENANCE
 77 WILL
 73 FROM
 64 IF
 59 F
 52 INCH
 50 HIGH
 48 UNDER
 46 STANDARDS
 44 AT
 42 PRESSURE
 41 SECTION
 39 N
 37 ITEMS
 36 SHOP
 34 MACHINE
 34 TOOLKIT
 33 SPECIAL
 31 LINDER
 29 DIESEL
 28 START
 27 PIN
 25 NOZZLE
 25 TECHNICIAN
 23 SEAT
 21 CAR
 21 NEW
 20 BLOCK
 19 FILTER
 19 STARTING
 19 END
 19 TORQUE
 17 J
 17 RINGS
 16 SPRAY
 15 BOLTS
 15 IT
 15 THAT
 14 CAMSHAFT
 14 FIELD
 14 LOCATION
 14 REPLACES
 13 DISASSEMBLE
 13 ORDER

612 AND
 216 OF
 144 TO
 134 VALVE
 123 ON
 88 FUEL
 73 INSTALL
 74 N
 69 ENGINEER
 62 MANUAL
 54 HEAD
 51 OIL
 49 STEPS
 47 CONDITIONS
 45 NECESSARY
 44 PLUMBER
 41 CONNECTING
 39 EQUIPMENT
 39 SPRING
 37 MATERIALS
 36 WATER
 34 REQUIRED
 33 AGE
 33 TOOLS
 31 VESSEL
 30 GOVERNOR
 29 VALVES
 25 READINGS
 25 PERFORM
 24 DIAMETER
 23 CLEARANCE
 21 GENERAL
 21 PLACE
 20 BODY
 19 LOW
 19 TIMING
 18 GUIDE
 17 COMPONENTS
 17 MODEL
 17 VISUALLY
 16 SYSTEM
 15 ENGINES
 15 V
 14 AARP
 14 CLEANING
 14 FOOT-POUNDS
 14 NETT
 14 SCREW
 13 CASH
 13 PLUGS

153 A
 124 REMOVE
 162 MUST
 114 IN
 97 CYLINDER
 88 OIL
 91 IS
 72 PERFORMED
 65 PISTON
 63 ASSEMBLY
 54 ROD
 50 INJECTOR
 48 READING
 47 REPLACE
 45 SHAFT
 43 ACCOMPLISHING
 41 COVER
 39 MECHANIC'S
 38 THAT
 36 MANUFACTURER'S
 35 AN
 34 SENIOR
 33 BY
 32 INCHES
 30 GAGE
 29 MICROMETER
 27 PROVIDED
 25 DETERMINE
 25 POSITION
 23 BETWEEN
 22 CRANKSHAFT
 21 CUMMINS
 21 ROCKER
 20 FLYWHEEL
 19 MAIN
 19 TOOL
 19 HAS
 17 DRIVE
 17 MOTORS
 14 ROPE
 16 THIS
 15 INDIVIDUAL
 15 OPEN
 14 AFTER
 14 CAMBER
 14 FRONT
 14 O
 14 TEMPERATURES
 13 ENVIRONMENT
 13 REFERENCE

254 OF
 176 TASK
 146 UP
 111 PUMP
 75 C
 85 GENERAL
 78 ALL
 71 WITH
 44 F
 54 WATERPROOF
 52 AT
 50 PARTS
 49 CHAPTER
 46 BIP
 45 SUPERVISION
 43 NOT
 41 REPAIR
 37 C
 37 APPROX
 36 PING
 34 ATLAS
 34 TECT
 33 CHECK
 30 REFERENCES
 30 HEAD
 29 CLEAN
 26 ON
 25 MEASURE
 25 SPEED
 23 HOLDING
 21 ASSIGNED
 21 I
 20 ADJUST
 20 STAND
 19 SEAL
 19 ASSEMBLE
 19 LUBRICATING
 17 EXHAUST
 17 REPLACEMENT
 16 DISASSEMBLY
 14 TOP
 15 INSPECTION
 15 OPERATING
 14 ARM
 14 EXPRESSIVE
 14 GARRISON
 14 CUT
 13 GIVE
 13 INTO
 13 REMOVAL

COUNT# WORD#

COUNT# WORD#

MOS WORD LISTING/DESCENDING FREQUENCY
COUNT# WORD#

13 BEHAVING
13 WEAPON
12 LEVER
12 TIGHTEN
12 SCREW
12 SPECIFICATIONS
12 VISC
11 GASK
11 GASKET
11 OPERATION
11 VIBRATION
10 DRIVE
10 MARK
10 COIL
9 AIR
9 COOLER
9 DIRECT
9 INSERT
9 FLANGE
9 TIGHTEN
8 CENTER
8 CHIP
8 GUIDES
8 LOAD
8 MANIFOLD
8 OVERHAUL
8 SCRAPERS
8 SURFACES
7 ACCORD
7 DAMAGED
7 IT
7 MALFUNCTION
7 SAME
7 TRANSMISSION
7 VOLT
6 BAIL
6 CONVERTED
6 GRABS
6 LINES
6 MINIMUM
6 PILOT
6 PELLET
6 RETAINER
6 SCAVENGER
6 THE USE
6 ACCORDANCE
6 AUTHORIZED
6 CLOSE
6 DO

13 SET
12 RUSHING
12 LISTING
12 PIPE
12 SHIMS
12 STOP
12 NO
11 COMPRESSION
11 GASKET
11 SHELL
11 WHEEL
10 GASKETS
10 UNIT
10 SERVICEABILITY
9 BEHN
9 CRACKS
9 EXCEED
9 I
9 SETSCREW
9 TIRE
8 CLUTCH
8 GASK
8 HANG
8 LOWER
8 NEEDED
8 PRESSURES
8 SEATS
8 TECHNICAL
7 ABOVE
7 BARREL
7 CLIPPING
7 LEAKS
7 UNIT
7 SHOULD
7 TYPE
6
6 GYM
6 FLUENT
6 TIRE
6 LEAKAGE
6 OF
6 RINGS
6 REPAIRS
6 RIMS
6 SEA
6 TAP
5 AMERICAN
5 BAR
5 COCKS
5 FRAME

13 USING
12 FRESH
12 MAY
12 PSI
12 STOP
12 SUPPORT
11 ADJUSTING
11 CYLINDERS
11 INLET
11 SLEEVES
10 BOTTOM
10 INSTALLING
10 PROCEDURES
10 TEMPERATURE
9 BEING
9 DAMAGE
9 FEELER
9 OVER
9 SURFACE
9 USE
8 COMPRESSED
8 FLOW
8 INSIDE
8 LIFT
8 OPERATIONAL
8 OT
8 SHELLS
8 TIRE
7 ACTIVITY
7 BOX
7 HAVING
7 LEVEL
7 OPERATE
7 SOURCE
7 UP
6 ADD
6 BELOW
6 CROSSHEAD
6 INTAKE
6 LOG
6 PART
6 PUSHROD
6 REPLACING
6 ROTATE
6 SETS
6 UNSERVICEABLE
5 APPLICABLE
5 BUSHINGS
5 CA
5 GLASS

13 WORK
12 HOLE
12 H
12 REVERSE
12 SILVER
12 THROTTLE
11 BRIDGE
11 CHILL
11 TASURE
11 UNIT
10 CRANKPIN
10 LOCKWIT
10 PICK
10 VESSELS
9 CHAIN
9 DELIVERY
9 FOLLOWER
9 PLATE
9 TELESCOPING
8 ATTACH
8 COVERS
8 FOLLOWING
8 INSTALLED
8 M
8 OTHER
8 READ
8 SOLVENT
8 WITHIN
7 ADJUSTMENTS
7 CAPACITIES
7 END
7 LOOSEN
7 REMOVED
7 SUPPORT/GENERAL
7 WITHOUT
6 ADJUSTMENT
6 CONTAINER
6 DEVICE
6 ITS
6 MANUALS
6 PERIODIC
6 PUSHRODS
6 RESULT
6 PIPE
6 THROUGH
6 WIRE
5 ARMS
5 RY--
5 DEFECTIVE
5 HANDTOOLS

COUNT 1 WORDS	MISC WORD LISTING/DESCENDING FREQUENCY	COUNT 2 WORDS	COUNT 3 WORDS	COUNT 4 WORDS	DATE 01144 1070 PAGE 1
5 HIGH	4 WIPED	5 INCLUDE	4 TABLET		
5 IMPACTORS	5 INTERNAL	5 INTERPRET	5 KIT		
5 LAPPING	5 LEAD	5 LEFT	5 LINERS		
5 MAGNIFYING	5 NEEDLE	5 NORMALLY	5 NUTS		
5 OUT-OF-BOUND	5 OIL	5 PERFORMING	5 PLASTIC		
5 PUCKET	5 PRECISION	5 PROHIBITION	5 RIBS		
5 S	5 SCALPS	5 SNAILS	5 SC		
5 SOFT	5 SPRAG	5 STANDARD	5 SECTION		
5 TABLE	5 TEETH	5 TIME	5 TYPICAL SHOOTING		
5 TING	5 TURN	5 UNDERWAY	5 UPPER		
5 WASHING	5 WRENCH	4 ALIVE	4 ALIGNMENT		
4 APPLE	4 APPROPRIATE	4 ASSEMBLING	4 ASSISTANT		
4 AXLE	4 BACK	4 BARRING	4 BUSH		
4 CANOPY	4 CARBON	4 BARRIS	4 CONNECTIONS		
4 COOLING	4 DIAL	4 DISCONNECT	4 ORLEN		
4 DRIVEN	4 ENGINE ROOM	4 EYE BOLT	4 FAN		
4 FIXTURE	4 FORM	4 FORWARD-NEUTRAL-REVERSE	4 GIVEN		
4 GROMMETS	4 GROOVE	4 HANDLE	4 MEAT		
4 INDICATOR	4 INNER	4 INSTRUCTION	4 INSUFFICIENT		
4 JOURNAL	4 LADDER	4 LEAF	4 LEAK		
4 LENGTH	4 LEVERS	4 LIFT	4 LEAKS		
4 MAINTAIN	4 MAKE	4 MARKS	4 LEAKS		
4 MAXIMUM	4 MEASURING	4 MISFIRING	4 MATING		
4 NUMBER	4 OVERHEATING	4 PACK	4 MEET		
4 PERFORMANCE	4 PLUG	4 PIMPS	4 PATTERN		
4 PROCESSING	4 PULL	4 PIPES	4 PREPARED		
4 ROAD	4 REASSEMBLE	4 RILEY	4 RACE		
4 REPEAT	4 RETAINING	4 RECORD	4 REGULATOR		
4 RIPPING	4 SCREEN	4 RINGS	4 REFR		
4 SECURED	4 SMALLER	4 SCREWS	4 SECTIONS		
4 SPINDLE	4 SPRINGS	4 SOD	4 SPECIFIC		
4 TAPETS	4 TESTER	4 STANDING	4 T		
4 WINDOW	4 WORKBENCH	4 THICKNESS	4 TRANSFER		
3 ALLEY	3 AS-	3 ACCESSORIES	3 ADAPTER		
3 BRIDGE	3 BUSH	3 BELLS	3 BRACKET		
3 CAN	3 CHANGE	3 BIPS	3 BITE		
3 COMPLETE	3 COMPOUND	3 CHAPTERS	3 CLOTH		
3 DEAD	3 DECREASE	3 CIRCUS	3 CROSSHEADS		
3 DETERMINED	3 DIFFERENTIAL	3 DEFECTS	3 DEPRESS		
3 DISCARD	3 DISTORTION	3 DEFLECTION	3 DISASSEMBLED		
3 EXPANSION	3 EXTERNAL	3 DRY	3 DRIPING		
3 FIT	3 FOOT-POUND	3 EXTREME	3 EARTH		
3 FORCELY	3 GAP	3 FORWARD	3 FEEL		
3 GROMMETS	3 HAND	3 GREATER	3 GREN		
3 HOLD	3 HOLDING	3 HEADS	3 HEAVY		
3 INCREASE	3 INLET	3 HYDROSTATIC	3 INCH-POUNDS		
3 INSTALLATION	3 INSTRUCTIONS	3 INPUT	3 INSPECTED		
3 LAP	3 LEAKING	3 JACKSCREW	3 KEY		
3 LEAKS	3 LOCATE	3 LESS	3 LINE		
4 MANTLE	3 MECHANICAL	3 LOGSHEET	3 LUBRICATION		
		3 MILING	3 MOUNT-AJUSTMENT		

THIS WORD LISTING CONCERNING EFFICIENCY

FOURTH WORD

FOURTH WORD

FOURTH WORD

FOURTH WORD

1 MICROMETERS
1 MICKS
1 OPERATED
1 PLAIN
1 POSITIVE
1 REAR
1 REQUEST
1 SCORED
3 SHOW
3 STAFFED
3 SUCH
3 SYSTEMS
3 TAPPEY
3 TIGHT
3 TOUCHED
3 VACUUM
3 WHICH
2 AIRFLOW
2 ALLOWING
2 ANSWERED
2 ASSEMBLED
2 BASE
2 BLOW
2 BTDC
2 CAN
2 CHANGES
2 DISCONNECT
2 COOLS
2 CROSS
2 DUTY
2 EQUIPPED
2 FILTERS
2 FOREIGN
2 GREASE
2 HOLES
2 IMMEDIATELY
2 INSTRUMENTS
2 KNURLED
2 LIMITS
2 MALFUNCTIONS
2 METAL
2 NOTICEABLE
2 OPENINGS
2 PAN
2 PEN/PENCIL
2 POINTS
2 PRESENTED
2 PUNCH
2 PULLED
2 RACES

1 MINUTE
1 NORMAL
1 ORIFICES
1 PLANT
1 PUMPS
1 REWIND
1 REQUIRES
1 SCORING
1 SIGNS
1 STEERING
1 SUFFICIENT
1 TACHOMETER
1 TREAD
1 TIMED
1 TOUCHABLE
3 VARIATION
2 ACCIDENTALLY
2 AIRTIGHT
2 ALSO
2 APPLIED
2 ATDC
2 BATH
2 BEEP
2 BUBBLES
2 CAPSCREWS
2 CHECKING
2 COMPRESS
2 CORRESPONDING
2 CROSSOVER
2 ELEMENTS
2 EVEN
2 FIRST
2 FORWARD-REVERSE
2 GS
2 HOUR
2 IMPELLER
2 INTERMEDIATE
2 LAMP-KV
2 LOWER END
2 MEASUREMENTS
2 METER
2 OBTAIN
2 ORIFICE
2 PAPER
2 PINS
2 POLISHED
2 PRESS
2 PROBLEM
2 HYDROMETERS
2 RACE

1 MERITES
1 MICKS
1 OUTER
1 PLATES
1 PRIMARILY
1 RECORDED
3 RIGHT
3 SHEET
3 SNOW
3 STEM
3 SUPPLY
3 TAKEN
3 THEY
3 TIP
3 TROUBLESHOOT
3 VESSELS
2 ACTIONS
2 ALARM
2 ALTERNATOR
2 AREA
2 AVAILABLE
2 RELI
2 BREATHER
2 CALIBRATION
2 CAUSE
2 CHIPPED
2 CONDITION
2 CRANK
2 DEEP
2 ENGINEERING
2 EXCHANGER
2 FEXIVE
2 FOUND
2 HALF
2 HUNTING
2 INDICATION
2 INTERVALS
2 LEAST
2 MADE
2 MECHANIC
2 METHOD
2 OFF
2 OUTPUT
2 PASSAGES
2 PLAY
2 POWER
2 PRESSURE-TIME
2 PROCEMIRE
2 Q
2 RAISE

1 MOVE
1 OFFICER
1 P
1 POSITIONING
1 PAM
1 RELEASE
3 POINTING
3 SHEET
3 STANDRY
3 STUDENTS
3 SUD
3 TAPER
3 TIE
3 TOLCRANES
3 TYPES
3 WASHER
2 AGAINST
2 ALIGNED
2 AMOUNT
2 ARROLD
2 AVOID
2 BENDING
2 BRING
2 CALIBER
2 CAVITY
2 CLOSED
2 CONTROLS
2 CRANKCASE
2 DIFFERENCE
2 ENRIPE
2 EYES
2 FOLLOW
2 GRADUALLY
2 HAPPER
2 IDENTIFIED
2 INOPERATIVE
2 JLIST
2 LEVELS
2 MAINTAINED
2 MEET
2 MICRO-ADJUSTING
2 OPENING
2 PACKING
2 PEAK
2 POINT
2 PRESENT
2 PREVENT
2 PROPERTIES
2 P
2 PATED

NO. WORD LISTING/ALPHABETIC FREQUENCY
COUNT WORDS

COUNT WORD

2 READING
2 REEL
2 REJECT
2 RIB
2 SEALED
2 SHORT
2 SNAP
2 SOUND
2 STARTER
2 STOPPED
2 SUCCESSFULLY
2 TESTING
2 TOP
2 UPRIGHT
2 W
2 WORKING
1 AD
1 ACCESS
1 ACCUMULATION
1 ADDING
1 AHEAD
1 AND-
1 ARROW
1 BACKING
1 BATTERY
1 BENCH
1 BLACK
1 BLOCKS
1 BLUEPRINT
1 BONES
1 BRACK
1 BRACKEN
1 BUSHINGS--INSPECT
1 CARBIDE
1 CC
1 CHECKED
1 CLAMPING
1 CLEANINGS
1 COILS
1 COMPENSATING
1 CONNECT
1 CONTROL-SHAFT
1 COPY
1 CUTTER
1 CYLINDERS
1 DAMAGING
1 DELECTOR
1 DEPOSIT
1 DEVELOPS

2 REPEATED
2 REPAIRED
2 ROLL
2 WATERPROOF
2 SEATING
2 SHOWN
2 SNIFFER
2 SPACER
2 STATOR
2 STRAIGHT
2 SYMPTOMS
2 TESTS
2 TRIMMER
2 WASHING
2 WATCH
1 ASS
1 ABBREVIATED
1 ACCESSIBLE
1 ACCURATELY
1 ADDITION
1 AIR INLET
1 AND/OR
1 ASSISTANCE
1 BACKLASH
1 BASED
1 BEE
1 BENT
1 BLADES
1 BLOWDOWN
1 BLUEPRINTS
1 BOTH
1 BREATHED
1 BULLETIN
1 CAPABLE
1 CAREFULLY
1 CENTERLINE
1 CIRCULATED
1 CLASS
1 CLOGGED
1 COLLECT
1 COMPENSATION
1 CONJUGES
1 CONTROLLED
1 CORK
1 CRACKED
1 CRITERIA
1 DATA
1 DELIVER
1 DEPRESSING
1 DEVISATE

2 RELEASE
2 REQUIREMENTS
2 ROLLERS
2 SCAVENGING
2 SECURE
2 SHUTDOWN
2 SNAK
2 SOIL
2 STEP-BY-STEP
2 STRAINER
2 TANK
2 THERMOSTAT
2 U
2 V
2 WERE
1
1 ABNORMALLY
1 ACCOMPLISHED
1 ACKS
1 ADJUSTED
1 ALTHOUGH
1 ANGLE
1 ATTENTION
1 BALANCE
1 BASES
1 BEACH
1 BILGES
1 BLEED
1 BLOWER
1 BOWNET
1 BOWLS
1 BRIDGES
1 BUNDLES
1 CARRIER
1 CARRIER
1 CHANGING
1 CIRCUMFERENCE
1 CLASSED
1 CLOSELY
1 COMBINATION
1 COMPLETELY
1 CONTACT
1 COP
1 CORRECTED
1 CRANKED
1 CUMINS
1 DEEPER
1 DENSITY
1 DEPTH
1 DEVICES

2 DEFLECTED
2 DEFLECTING
2 RIBBON
2 SCREENS
2 SCRAPED
2 SERT
2 SCIENCED
2 STEERING
2 STOWAGE
2 TENSION
2 THROUGHLY
2 UNUSUAL
2 VERTICAL
2 WHEEL
1 AB
1 ACCEPTABLE
1 ACCUMULATED
1 AEROS
1 AGAIN
1 ALWAYS
1 ANSWER
1 AVERAGE
1 BALANCED
1 BASKET
1 BELTS
1 BIRD
1 BLEEDER
1 BLUE
1 BOOK
1 BRACKETS
1 BRIGHT
1 BURNS
1 CURE
1 CAUTION
1 CHART
1 CLAMP
1 CLEANED
1 CLOSING
1 COMMANDS
1 COMPRESSOR
1 CONTINUE
1 COPPER
1 CORROSION
1 CRANKING
1 CYLINDER
1 DEFLECTOR
1 DEPARTURE
1 DESIGNED
1 DIAGNOSTIC

1000 WORD LISTING/DESCENDING FREQUENCY

COUNT1 WORD1

COUNT2 WORD2

COUNT3 WORD3

COUNT4 WORD4

1 DIAGRAM
 1 DEFINITION
 1 DISASSSEMBLING
 1 DISTRIBUTION
 1 DOWEL
 1 DRIP
 1 DUNE
 1 EDGES
 1 FLOW
 1 ENGINEER/CHIEF
 1 ENERY
 1 ERROR
 1 EVERY
 1 EXCEEDS
 1 EXCEPTOR
 1 FAILURE
 1 FINISHED
 1 FLYWHEELS
 1 FORMS
 1 GALLING
 1 GLASS--
 1 GRIT
 1 HALF-FULL
 1 HO
 1 HIGHER
 1 HOLE
 1 IMPERSE
 1 INCH-ROUND
 1 INDEPENDENT
 1 INSURENT
 1 INSURTS
 1 INSTALLATIONS
 1 ISOLATE
 1 JUMPER
 1 KNOR
 1 LAPPED
 1 LEAD
 1 LEAK
 1 LOCATED
 1 LOCKPLATE
 1 LUBRICANT
 1 MANOMETER
 1 MARKER
 1 MEASURABLE
 1 METER/ROAD METER
 1 MILD
 1 MIXED
 1 MOUNTING
 1 MUTILATION

1 DIAPHRAGM
 1 DIE
 1 DISCARDED
 1 DISTORTED
 1 DOWELS
 1 DROP
 1 DUESIES
 1 EFFECT
 1 ENERGIZE
 1 ENLARGEMENT
 1 EQUAL
 1 ESTABLISHED
 1 EVIDENCE
 1 EXPRESS
 1 FABRICATE
 1 FALL
 1 FIRMLY
 1 HEAT
 1 FOLLOWED
 1 FREQUENTLY
 1 GRIP--REPLACE
 1 GRV
 1 GROUP
 1 HALES
 1 HEADERS
 1 HOLLOWDOWN
 1 HOPEFULLY
 1 IMPPELLERS
 1 INFLUENT
 1 INDICATE
 1 INJ
 1 INSPECT--
 1 INSTALLING--
 1 ISOLATED
 1 KEEL
 1 KNOCKS
 1 LAY
 1 LIGHTED
 1 LIP
 1 LOCATING
 1 LOCKS
 1 MACHINED
 1 MANUALLY
 1 MATCH
 1 MEASURED
 1 METERADJUSTMENT
 1 METER
 1 METEROR
 1 MOVED
 1 NEED

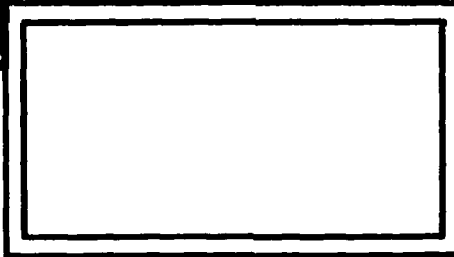
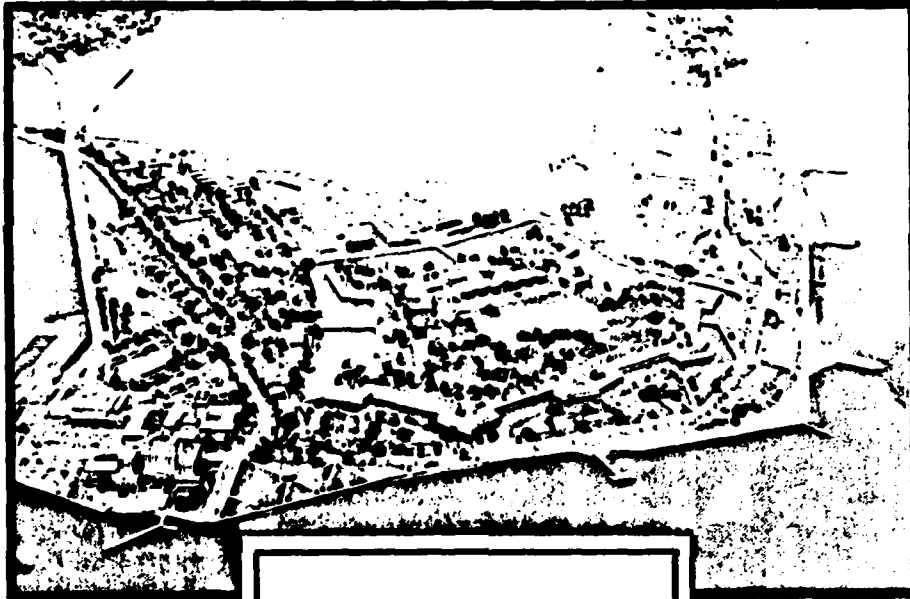
1 DIE
 1 DIRECTION
 1 DISCHARGE
 1 DISTRIBUTION
 1 DOWNWARD
 1 DROP
 1 EASY
 1 EFFECTIVE
 1 ENCASE
 1 ENOUGH
 1 EQUALLY
 1 ETCHING
 1 EXACT
 1 EXCESSIVELY
 1 FACE
 1 FEW
 1 FITS
 1 FLOOD
 1 FOLLOWS
 1 FURNISHED
 1 GENERATOR
 1 GOVERNED
 1 GRV
 1 HANDS
 1 HEIGHT
 1 HOLD
 1 HOURS
 1 IMPORTANCE
 1 INCOMPLETELY
 1 INDICATES
 1 INSURE
 1 INSPECTING
 1 INTERCHANGE
 1 JOINT
 1 KEEP
 1 LACKS
 1 LAYING
 1 LIGHT
 1 LOADED
 1 LOCKERS
 1 LOGBOOK
 1 MACHINERY
 1 MANUFACTURER
 1 MATTER
 1 NETS
 1 NODPOINT
 1 MISCELLANEOUS
 1 MOTOR
 1 MOVES
 1 NEEDING

1 DIFFERENCES
 1 DUNE
 1 DISPLACED
 1 DEFS
 1 DIRECTION
 1 DIRECTION
 1 ECCENTRIC
 1 EJECTED
 1 ENGINEERS
 1 ENTERED
 1 EPICATIC
 1 EVALUATE
 1 EXACTLY
 1 EXTEND
 1 FACILITY
 1 FEET
 1 FLANGE
 1 FLYWHEEL
 1 FORCED
 1 FUSE
 1 GIDES
 1 GRAY
 1 GRV
 1 HANDLING
 1 HEIGHTEN
 1 HONEY
 1 IDENTIFY
 1 INACCURATE
 1 INCREASING
 1 INDICATORS
 1 INSPECTING
 1 INSPECTORS
 1 INTERNALLY
 1 JOURNALS
 1 KEYWAY
 1 LANTERN
 1 LEAKAGE
 1 LIMITER
 1 LIPS
 1 LOCKNUTS
 1 LOSS
 1 MANUFACTURERS
 1 MANY
 1 MEAN
 1 METERS
 1 MIDWAY
 1 MISCELLANEOUS
 1 MOUNTING
 1 MOVING
 1 NEXT

CORPUS WORDS	CORPUS WORDS	MOS WORD LISTING/DESCENDING FREQUENCY CORPUS WORDS	DATE 01/16/1010 PAGE 4 CORPUS WORDS
1 BRUSCH 1 VINCENZY 1 WALLS 1 WASHERS 1 WHITE 1 WOODEN 1 WOODS	1 VALUES 1 VISIBLY 1 WARM 1 WEE 1 WIFE 1 WORK 1 WRAP	1 VARIABLE 1 VISUAL 1 WAPPING 1 WHAT 1 WIPING 1 WIPKRENCHES 1 X	1 VARY 1 VOLTAGE 1 WAS 1 WERE 1 WITHDRAW 1 WORKSHOP 1 Y 1 Z

HEADQUARTERS
UNITED STATES ARMY TRAINING AND DOCTRINE COMMAND
FORT MONROE, VIRGINIA 23651

DATA CONTROL NUMBER _____
100 NO / PROJECT NO



PREPARED BY: OPERATIONS DIV, DPFO

FORM
ATDP Oct 68 109-1 Feb 68 edition may be used
until exhausted.

COPY _____ OF _____ COPIES

END

DATE
FILMED

8 8 2

DTIC