

AD-A117 190

ARMY TRAINING DEVELOPMENTS INST FORT MONROE VA
WORD FREQUENCY ANALYSIS MOS: 15E. SKILL LEVELS 1 AND 2.(U)
MAY 82 A A LONGO
MOS-15E

F/G 5/9

UNCLASSIFIED

NL

10-1
4-2
10/80

END
10-1
4-2
10/80

DTIC FILE COPY

~~AD A117190~~
HEADQUARTERS

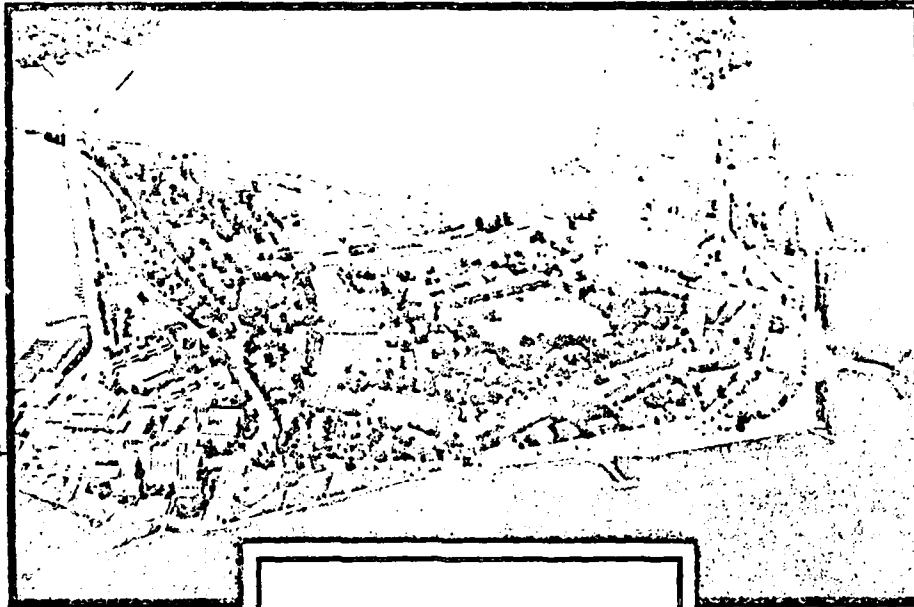
DATA CONTROL NUMBER

3

100 NO / PROJECT NO

UNITED STATES ARMY TRAINING AND DOCTRINE COMMAND
FORT MONROE, VIRGINIA 23651

AD A117190



Copy available to DTIC does not
permit fully legible reproduction

DTIC
SELECTED
JUL 15 1982

DISTRIBUTION STATEMENT A
Approved for public release;
Distribution Unlimited

Word Frequency Analysis
MOS: 15E
Skill Level 1

PREPARED BY: OPERATIONS DIV, DPFO

COPY ____ OF ____ COPIES

ATOP FORM
Oct 80 109-1

Feb 80 edition may be used
until annulled.

82 07 20 129

DISCLAIMER NOTICE

**THIS DOCUMENT IS BEST QUALITY
PRACTICABLE. THE COPY FURNISHED
TO DTIC CONTAINED A SIGNIFICANT
NUMBER OF PAGES WHICH DO NOT
REPRODUCE LEGIBLY.**

UNCLASSIFIED

SECURITY CLASSIFICATION OF THIS PAGE (When Date Entered)

REPORT DOCUMENTATION PAGE		READ INSTRUCTIONS BEFORE COMPLETING FORM
1. REPORT NUMBER 15E	2. GOVT ACCESSION NO. AD-A117190	3. RECIPIENT'S CATALOG NUMBER
4. TITLE (and Subtitle) Word Frequency Analysis MOS: 15E Skill Level 192		5. TYPE OF REPORT & PERIOD COVERED Final
		6. PERFORMING ORG. REPORT NUMBER
7. AUTHOR(s) Dr. Alexander A. Longo		8. CONTRACT OR GRANT NUMBER(s)
9. PERFORMING ORGANIZATION NAME AND ADDRESS Training Developments Institute ATTN: ATTC-DOR Fort Monroe, VA 23651		10. PROGRAM ELEMENT, PROJECT, TASK AREA & WORK UNIT NUMBERS
11. CONTROLLING OFFICE NAME AND ADDRESS Training Developments Institute ATTN: ATTC-DOR Fort Monroe, VA 23651		12. REPORT DATE May 1981
		13. NUMBER OF PAGES 26
14. MONITORING AGENCY NAME & ADDRESS (if different from Controlling Office)		15. SECURITY CLASS. (of this report) Unclassified
		15a. DECLASSIFICATION/DOWNGRADING SCHEDULE
16. DISTRIBUTION STATEMENT (of this Report) Approved for Public Release; Distribution is unlimited.		
17. DISTRIBUTION STATEMENT (of the abstract entered in Block 20, if different from Report)		
18. SUPPLEMENTARY NOTES		
19. KEY WORDS (Continue on reverse side if necessary and identify by block number) MOS Vocabulary Readability Comprehension of text Curriculum Development		
20. ABSTRACT (Continue on reverse side if necessary and identify by block number) → This report contains a frequency count of the basic vocabulary contained in the Army Soldier's Manual for the MOS/Skill Level designated in the title, (item 4). This frequency count reflects only skill levels I/II and excludes the common tasks and those sections which are redundant/incidental to vocabulary analysis (e.g. table of contents, appendices, references, charts, etc). This vocabulary is only a sampling of the entire MOS vocabulary and is subject to change with MOS changes.		

Contents and General Information

1. The Word Frequency Analysis (WFA) reports were reproduced exactly as generated via computer printout. The prime users of this document were fully cognizant of its contents and required no special instructions for interpretation. However, for the sake of other readers, the following brief description of contents is provided.

2. The WFA reports for most MOS are divided as follows:

- o Skill Level I
- o Skill Level II

However, due to the way some Soldier's Manuals are constructed, the WFA for some MOS have both Skill Levels merged into one report. Each Skill Level is subdivided into two sections.

a. Alphabetic Rank: this section lists all terms in alphabetical order (left to right). To the left of each term is the frequency which that term appears in the text submitted for word frequency count.

b. Frequency Rank: this section lists the same terms contained in the first section of the report but reranked in accordance with their frequency of appearance from highest to lowest. Also, the terms are ranked alphabetically within the same frequency level.

3. It should be noted that the basis of this WFA is the Soldier's Manual. Consequently, this vocabulary set is only a sampling of the entire MOS vocabulary and is subject to change.



Accession For	
DTIC GRA&I	<input checked="" type="checkbox"/>
DTIC TAB	<input type="checkbox"/>
Unannounced	<input type="checkbox"/>
Justification	
By _____	
Distribution/	
Availability Codes	
Dist	Avail and/or Special
A 23	Q

HEADQUARTERS
UNITED STATES ARMY TRAINING AND DOCTRINE COMMAND
FORT MONROE, VIRGINIA 23651

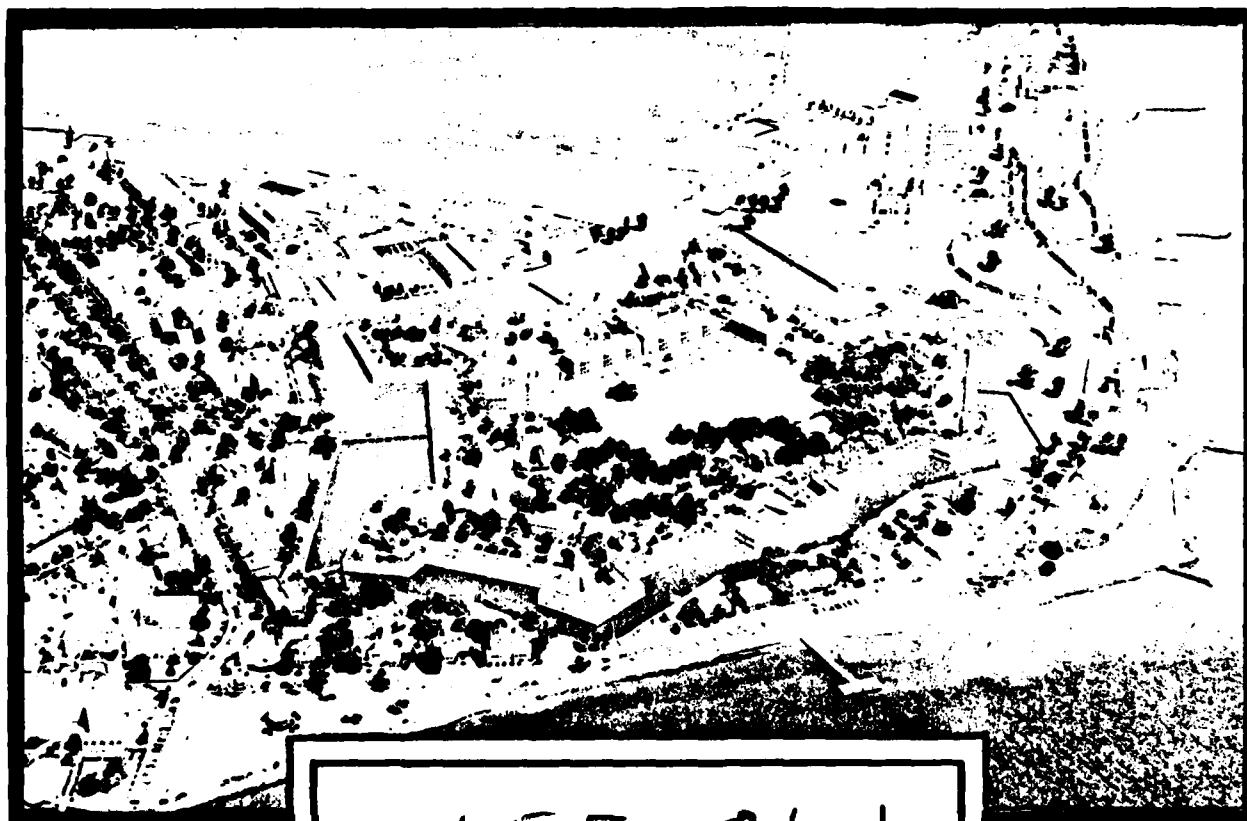
DATA CONTROL NUMBER

Job No / Proj No

FEA
WFA

SEP 15 1980

ORAM



15E SL1

ATDP FORM 109-1 Replaces ATDS 118-1, Feb 75,
Feb 80 which is obsolete

PREPARED BY: OPERATIONS DIV, DPFO

COPY _____ of _____ COPIES

MOS ISE SKILL 1

DATE 0C255 1346 PAGE 1

COUNT1 WORD1

MOS WORD LISTING/ASCENDING SEQUENCE
COUNT2 WORD2 COUNT3 WORD3

COUNT4 WORD4

5 ABOVE
1 ACCOMPLISHED
1 ACTION
4 ACTUATOR
1 ADJACENT
1 ALERT
1 ALARM
4 ALIGNED
1 ALONG
3 ALWAYS
1 AN/GSA
3 ANGLE
12 ANY
1 APPENDIX
1 APPROACH
4 APPROXIMATELY
1 APPLS
20 APU
11 ASSEMBLIES
13 ASSISTANTS
21 ATTACK
8 ATTACK
1 AUTOMATIC
1 AVOID
105 B
2 BAG
4 BAR
5 BATTERY
1 BECOME
2 BEING
3 BEL PATH
1 BINDER
5 BLAST
2 BLOCKS
5 BOLT
4 BOLT
9 BRAKE
3 BREAKERS
1 BRINGING
1 BUMP
4 BURNING
3 BY-PASS
3 CABLED
5 CAN
2 CAPSCREWS
7 CAREFULLY
5 CASE
1 CAUTION

17 AC
15 ACCORDANCE
1 ACTIVATING
10 ADAPTER
27 ADJUST
34 AIR
1 ALERT
4 ALIGNMENT
1 ALPHA
2 AMPETER
1 AN/GSA-113
11 ANNOYANCE
4 AOL
1 APPLICABLE
2 APPROACHES
1 AR
15 ARM
25 AS
38 ASSEMBLY
1 ASSISTED
6 ATTACHED
1 ATTEMPT
1 AUX
4 AWAY
4 BACK
4 BAGS
1 BARREL
76 BE
7 BEAM
3 BELOW
2 BENT
7 BINDERS
30 BLASTING
1 BLOWN
6 BOLTS
1 BUTTON
4 BRACKETS
1 BREAKS
1 BROKEN
3 BUNDLE
4 BUT
2 BYPASS
24 CABLES
4 CANNOT
4 CAPTIVE
4 CARRYING
1 CASES
8 CAUTIONS

284 A
5 ACCEPT
1 ACCUMULATOR
1 ACTUALLY
1 ADEQUATE
12 AFTER
4 AIRFRAME
2 ALIGNMENT
40 ALL
3 ALSO
1 AMMETER-VOLTMETER
4 A/TSC-110
4 ANNOUNCES
1 APEX
12 APPLIED
3 APPROPRIATE
34 ARE
1 ARMAMENT
12 ASSEMBLE
4 ASSISTANCE
29 AT
5 ATTACHING
1 AUTHORIZED
7 AUXILIARY
28 AZIMUTH
1 BACK-UP
11 BALL
1 BARS
25 BEAM
4 B-E-FIRE
1 BEND
17 BETWEEN
3 BLANK
6 BLEED
4 BWARD
23 BRUSH
11 BUCK
12 BUNCH
1 BREATHING
1 BUBBLES
1 BURNING
1 BUTTONS
97 C
1 CABLING
2 CANVAS
2 CAPWELL
2 CARTRIDGE
2 CASTER
2 CA

1 ACUTE
1 ADULT
2 ACCESS
1 ACROSS
2 ACTLATE
2 ADHESIVE
5 AGAINST
1 AIRHOSE
12 ALINE
8 ALLOW
1 ALTER
77 AN
45: ANV
1 ANOTHER
1 APPARATUS
10 APPLY
2 APPROXIMATE
11 AREA
3 AROUND
12 ASSEMBLED
27 ASSISTANT
6 ATOMIC
1 ATTACHMENT
2 AUTO
3 AVAILABLE
1 AIOJI
1 BAFFLE
22 BAND
5 BASE
4 BEAMS
1 BEGIN
2 BEHIND
2 BEYOND
13 BLANKET
1 BLOCK
1 BODY
1 BOOTS
2 BRACKET
16 BREAKER
1 BRIGHTNESS
1 BUILDING
4 BURN
24 BY
54 CABLE
1 CAM
29 CAP
1 CARBON
1 CARTRIDGES
1 CAUSE
1 CCM

D. L. P. M.

COUNT1	WORD1	COUNT2	WORD2	COUNT3	WORD3	COUNT4	WORD4
9	CENTER	4	CENTERED	1	CENTERLINE	1	CENTIMETERS
4	CHAIN	5	CHAINS	1	CHANGER	1	CHANGE
3	CHARGE	1	CHAP	51	CHAPTER	27	CHARGE
1	CHARGES	4	CHARGING	9	CHECK	4	CHECKS
3	CHIFF	3	CHGCK	1	CHECKED	2	CHUCKS
2	CHINE	19	CIRCUIT	1	CIRCUITRY	1	CIRCUITS
12	CLAMP	3	CLAMPS	5	CLEAN	1	CLEANING
6	CLEAR	3	CLEARANCE	2	CLEAR	5	CLIP
1	CLIPPING	5	CLIPS	12	CLOCKWISE	10	CLOSE
3	CLOSED	3	CLOTHING	11	CMA	1	COARSE
2	CLOCKS	1	CODE	2	COINCIDE	1	COLD
1	COLLET	1	COMBUSTION	1	COME	1	COMING
6	COMPLETE	5	COMMENTS	1	COMPUTED	1	CONICAL
8	CONDITIONED	3	CONDITIONED-AIR	5	CONDITIONER	41	CONNECTIONS
1	CONDITIONS	1	CONDUCT	1	CONF	6	CONFIDENCE
2	CONFIDENCE/STANDARD	5	CONFIGURATION	2	CONFIGURATIONS	44	CONNECT
12	CONNECTED	3	CONNECTING	5	CONNECTION	7	CONNECTIONS
14	CONNECTOR	3	CONNECTORS	1	CONSIDERED	1	CONSISTING
2	CONSTRUCT	1	CONUIT	44	CONTAINER	1	CONTAINERS
1	CONTAMINATED	1	CONTAMINATION	1	CONTINUE	4	CONTINUITY
43	CONTROL	3	COOL	1	CONSTANT	1	COOLING
20	COOL	19	CORRECT	1	CORRECTION	8	CORRECTLY
1	CORROSION	1	COUL	12	COUNT	4	COUNTDOWN
6	COUNTERCLOCKWISE	1	COUNTING	1	CUPLE	2	COUPLER
4	COURTLING	3	COUPLINGS	25	CUPER	2	COVERING
6	COVERS	2	CRACKED	1	CRACKS	1	CRACLE
1	CHEA	8	CREAM	2	CREAK	3	CRIMP
1	CRIMPER	4	CRIMPERS	1	CRIMPING	3	CROSS
1	CROSSLINE	1	CROSSLINES	1	CROSSMEMBER	6	CUBICLE
1	CURRENT	1	CURVES	1	CUS-IDDING	6	CUT
1	CUTAWAY	2	CUTOUT	1	CUTTER	1	CW
1	CYCLE	3	CYCLES	9	CYLINDER	70	D
13	DA	2	DAILY	4	DAMAGE	2	DAMAGED
6	DAMPENER	1	DAMS	1	DANGEROUS	22	DAVIT
18	DC	1	DEBRIS	1	DECEASED	1	DEENERGIZED
1	DELAY	1	DEMOLITION	4	DECISIONS	2	DENTS
1	DEPARTMENT	8	DEPTH	4	DESIGNATIONS	1	DESIGNATING
1	DESIGNED	1	DESTROYED	4	DESIGNATED	1	DESTRUCTION
3	DETERMINE	3	DETORATE	4	DESTRUCT	28	DETECTING
4	DETERMINATION	1	DETRATOR	1	DETESTED	1	DIAL
1	DIESEL	1	DIFFERENCES	25	DEVICE	1	DIG
15	DIRECT	12	DIRECTED	1	DIG	6	DIRECTION
3	DIAL	2	DIRTY	2	DISCARD	2	DIRECTLY
2	DISCONNECTION	2	DISABLE	1	DISCERNING	15	DISCONNECT
3	DISENGAGED	3	DISTANCE	4	DISTRIBUTION	1	DISENGAGE
22	DU	6	DOES	1	DISHOT	2	DIVIDE
13	DUR	4	DOLDS	3	DIT	3	DONE
13	DOWN	3	DRIVE	10	DIVER	2	DOTS
3	DS	6	DUCT	1	DYE	1	DRY
2	DRAINAGE	17	DURING	2	DYES	2	DUMP

COUNT 1 WORD 1

10 EACH
 1 EFFORTS
 1 ELIS
 4 ELEVATION
 2 EMPLACEMENT
 1 EMPLACED
 1 ENGAGED
 1 ENGAGER
 1 ENTER
 48 ENV
 1 EQUIPPED
 1 EJECTOR LAUNCHER
 12 EU
 1 EXCEPT
 1 EXPANDABLE
 9 EXPLOSIVE
 5 EXTENDED
 4 EXTRA
 2 EXTRIC
 1 FALLS
 5 FAULTS
 3 FIB
 4 FIGURES
 2 FIF
 15 FINE
 4 FIRES
 22 FIRST
 3 FISH
 1 FLASHING
 1 FLUSH
 1 FUG
 1 FELLOWS
 1 FENCE
 1 FERTILE
 1 FORTH
 7 FREQUENCY
 11 FUEL
 1 FUEL
 1 GEAR
 2 GENTLY
 1 GLASS
 2 GLOVES
 4 GLOUSE
 31 GROUND
 1 GLARD
 11 H
 2 HALVES
 13 HANDLE
 1 HARDENED
 1 HAZARD

COUNT 2 WORD 2

1 EARTHEN
 3 EIGHT
 2 ELECTRIC
 4 EMERGENCY
 2 ENABLE
 3 ENCS
 2 ENGAGED/DISENGAGED
 2 ENGINES
 1 ENTERING
 1 ENVIRONMENT
 1 ERDA
 3 ERROR
 8 EVACUATE
 1 EXERCISE
 1 EXPECTED
 6 EXPLOSIVES
 3 EXTENSION
 1 EXTRACTOR
 1 FACE
 2 FAN
 8 FEET
 3 FIGHT
 3 FILLED
 2 FINGER
 1 FIRE
 14 FIRING
 7 FITTING
 5 FLANGES
 2 FLAT
 5 FM
 1 FOLD
 5 FOLT
 1 FOLDFINGER
 11 FORWARD
 19 FRAME
 68 FROM
 9 FULLY
 23 G
 5 GEN
 3 GIRTH
 1 GU
 4 GOVERNOR
 4 GREEN
 2 GROUNDED
 44 GUIDANCE
 5 H-416
 3 HAMMER
 2 HANDLES
 4 HAPDANE
 8 HEAD

COUNT 3 WORD 3

2 EDGE
 1 EITHER
 7 ELECTRICAL
 18 ENPLACE
 2 ENPLING
 1 ENPLIZED
 1 ENPAGES
 2 ENPLGH
 1 ENTIFE
 1 ENVIRONMENTAL
 8 EJECTOR
 1 ESTABLISHED
 1 EVACUATION
 1 EXERCISES
 1 EXPEDIENT
 3 EXPOSE
 1 EXTINGUISH
 3 EYES
 1 FACILITATE
 1 FAN
 1 FIELD
 1 FIGHTING
 4 FILLING
 1 FINGERS
 6 PIPEFIGHTING
 1 FIRE
 1 FITTINGS
 1 FLASH
 2 FLUCTUATIONS
 1 FMAN
 4 FOLLOWED
 1 FOOTPACS
 6 FRETION
 2 FOUND
 2 FRAMES
 36 FRONT
 6 FUNCTIONS
 16 GAGE
 43 GENERATOR
 1 GIVE
 1 GOGGLES
 1 GRADUALLY
 1 GROOVE
 1 GROUNDING
 46 GUIDE
 8 H-4211B
 10 HAND
 28 HANDLING
 8 HAS
 1 HEADING

COUNT 4 WORD 4

3 EFFECTIVE
 94 EL
 2 ELECTRONIC
 18 EMPLACED
 95 END
 5 ENGAGE
 15 ENGINE
 1 ENTANGLED
 2 ENTRY
 9 EQUIPMENT
 18 EJECTOR-LAUNCHER
 2 ETC
 1 EXAMPLE
 5 EXHAUST
 3 EXPENDABLES
 17 EXTEND
 2 EXTINGUISHING
 29 F
 1 FACT
 1 FASTENED
 7 FIFTH
 56 FIGURE
 4 FINAL
 40 FIR
 1 FIREMENIS
 4 FIRMLY
 4 FIVE
 1 FLASHES
 2 FLUID
 1 FOCUS
 5 FOLLOWING
 67 FOR
 15 FORM
 12 FOUR
 5 FREE
 1 FT
 26 FUSE
 1 GAIN
 1 GENERATOR'S
 41 GIVEN
 1 GOOD
 1 GRASP
 1 GROUVED
 4 GRPLP
 8 GUIDED
 5 HALF
 1 HANDBRAKES
 1 HANG
 10 HAVE
 3 HEADSET

1 HEIGHTS
1 HELD
1 HIGH-PRESSURE
25 HOISTING
4 HOLE
1 HOLE-IN-PILE
5 HOLE
1 HORN
1 HORN
1 ICE
1 IGNITERS
5 IMMEDIATE
4 INCH
2 INCREASE
1 INDICATE
8 INDICATOR
2 INITIATION
9 INSERT
6 INSPECTION
2 INSTALLING
1 INSURES
2 INTERNAL
13 INTO
1 INTERFERE
1 ISOLATE
6 ITS
7 J
3 JIB
4 JI
1 KEEP
1 KINKS
4 L
1 LAGGE
7 LAUNCH
6 LAYING
2 LEAKING
9 LEG
3 LESS
1 LEVELLING
2 LIFT
2 LIGHTED
3 LIHEAP
1 LISTED
2 LOCAL
19 LOCK
6 LOCKPINS
6 LOOSEN
1 LORAL
8 MAINTENANCE
1 MAN

2 MEAT
1 HELMET
1 HIP
13 HULD
5 HOLES
2 HOOKS
2 HOSES
3 HTRS
4 H4211B
45 IF
3 II
3 IMMEDIATELY
7 INCHES
1 INCREASING
1 INDICATING
8 INDICATORS
2 INLET
1 INSERTING
25 INSTALL
1 INSTANT
40 INT
1 INTERSECTS
1 INTRANSIT
1 INVOLVES
22 IT
1 ITSELF
39 JACK
73 JUS
1 JI
2 KEYWAYS
1 KITS
2 LADDER
40 LAS
8 LAUNCHER
8 LCC
8 LEAST
5 LEGS
1 LESSON
1 LEVELS
2 LIFTED
9 LIGHTS
10 LINES
2 LIT
1 LOCAL-REMOTE
2 LOCKED
1 LOCKING
26 LOWER
5 MADE
6 MAKE
1 MANDATORY

11 HEATING
1 HELD
3 HITCH
2 HOLDER
3 HORN
2 HORIZONTAL
1 HOUSING
1 HVD
35 I
2 IGNITE
14 III
1 IMPROPERLY
1 INCLINED
1 INDICATE
4 INDICATION
3 INDIVIDUAL
10 INNER
2 INSIDE
2 INSTALLATION
1 INSTRUMENTS
1 INTAKE
4 INTERSTAGE
1 INVESTIGATION
4 INVOLVING
1 ITEM
1 II
2 JACKS
1 JUST
1 JI
5 KINGPIN
3 KNOT
1 LANDING
5 LASER
4 LAUNCHING
1 LEAD
1 LEAVE
10 LENGTH
15 LEVEL
12 LEVER
7 LIFTING
1 LIMIT
2 LINK
2 LIVES
1 LOCATED
1 LOCKING
1 LOCK
2 LOCKED
19 MAIN
1 MAKING
36 MANUAL

1 HEAVY
7 HIGH
3 HOIST
2 HOLDING
3 HOOK
2 HORN
1 HOWEVER
7 HYDRAULIC
10 IAW
6 IGNITER
6 IMAGE
141 IN
2 INCLUDE
1 INDICATED
2 INDICATIONS
1 INITIATE
40 INP
22 INS LOT
2 INSTALLED
53 INSURE
1 INTERCONNECTING
2 INTERVEICULAR
1 INVOLVE
97 IS
3 ITEMS
6 IX
2 JAWS
4 JI
6 K
1 KINKED
2 KNOT
1 LANYARD
2 LATCH
10 LAY
1 LEADING
7 LEFT
5 LENGTH
1 LEVELED
5 LEVERS
7 LIGHT
23 LINE
1 LIQUID
17 LOAD
4 LOCATING
5 LOCKPIN
2 LOOSE
2 M
1 MAINTAIN
2 MALFUNCTION
6 MANUALLY

43 MAX
4 MASTER
1 MATERIALS
8 MAY
4 MECHANISM
1 MEDIUM
2 MEDIUM
1 MISSILE/
1 MIX
1 MORE
5 MOVABLE
1 MOWER
6 MZ
1 MZ22
1 MZ
2 NEAREST
1 NEW
8 NO
3 NORMAL
4 NOTED
2 NOT
2 NOT
1 OBJECTIVE
2 OCCUR
1 OFFICE
2 OFFICE
15 OPERA
10 OPERATIONS
2 OPTICAL
1 ORGANIZATIONAL
55 OUT
1 OUTSIDE
1 OVERLAPS
9 PAD
3 PAIRS
11 PANEL
11 PARAGRAPH
1 PART
4 PER
2 PERFORMING
10 PERSONNEL
1 PICTURE
1 PIVOT
1 PLATE
2 PLUGGER
2 PLUING
5 POSITIONING
64 POWER
1 PRECONDITIONING
1 PREPOSITIONED

1 MARKED
4 MATE
14 MATING
2 MEANS
2 MET
1 MIGHT
30 MINUTES
1 MISSILE/GENERATOR
36 MUD
1 MUST
9 MOVE
3 MOVING
5 MZ43
5 MZ
40 MZ
16 NECESSARY
4 NEXT
1 NOMINAL
1 NOSE
1 NOTES
11 NUCLEAR
5 NUTS
36 OBSERVE
1 OCCURRED
2 OFFSET
1 ON/ISS-GSG
14 OPERATE
22 OPERATOR
1 OPTIMAL
2 ORIENT
2 OUTER
40 OVER
1 P
5 PADS
1 PAL
1 PANELS
13 PARAGRAPHS
1 PARTIALLY
33 PERFORM
2 PERMISSIVE
3 PG
5 PIN
1 PIVOT
15 PLATFORM
1 PM
1 PPTS
4 POSITIONS
8 PRECAUTIONS
2 PREPARATION
3 PRESENT

2 MARKER
7 MATED
3 MATTER
1 MEASURE
1 METER
1 MILITARY
1 MISPIPE
1 MISSILES
4 MZ
3 MOUNTED
1 MOVEABLE
7 MZ
4 MZ
6 MZ
5 MZ
1 NEEDED
2 NICKS
11 NONELECTRIC
54 NOT
1 NOTIFIED
4 NUMBER
1 O
1 OASERVER
173 OF
2 OUL
32 OUE
11 OPERATING
32 OPERATORS
72 OY
1 OZIGIN
2 OZILET
1 OZERLAP
2 PAGE
20 PAGE
1 PALM
56 PAP
3 PARALLEL
8 PARS
42 PERFORMANCE
1 PERMITTED
2 PHASE
1 PINHOLES
33 PLA
1 PLIERS
4 PNEUMATIC
60 POSITION
7 POSSIBLE
4 PRECONDITION
13 P-ERAPE
8 PRESS

9 PAST
4 MATERIAL
2 MAXIMUM
42 MEASURES
5 METERS
3 MILS
66 MISSILE
1 MISSING
15 MONITOR
3 MOUNTING
3 MOVEMENT
5 MI
4 MZ
21 MZ57
1 NEAPER
2 NEVER
1 NINE
1 NONEXPLOSIVE
26 NOTE
2 NOTIFY
2 NUMBERS
1 O'CLOCK
3 OBTAIN
26 OFF
142 ON
1 ONLY
10 OPERATION
1 OPEATORS
6 ORDER
4 OTHER
3 OUTPUT
1 OVERLAPPING
1 PACKAGED
67 PAGES
1 PAN
3 PAPA
1 PARALLELING
1 PATH
6 PERFORMED
3 PERSHING
1 PHYSICAL
7 PINS
31 PLACE
3 PLUG
10 POINT
8 POSITIONED
1 POWDER
1 PRECONDITIONED
5 PREPARED
16 PRESSURE

COMMUNICATOR

1 SPIN
2 SPICES
1 SPIR
3 SPIRE
13 SPICAT
1 SPICE
2 SPIED
1 SPIE
1 SPIES
2 STABILIZE
12 STAIRWAY
1 STAIR
10 STAIRWAY
1 STEEL
18 STUP
6 STUPE
1 STRIKING
1 STEAK
17 STRENGTHEN
2 STRENGTH
4 STRENGTH
31 SYSTEM
2 T-1502A
74 TAG
1 TAG
1 TAGS
5 TELESCOPE
29 TEST
623 THE
2 THERE
7 THIS
1 THREAT
2 THUMB
4 TIGHT
1 TIP
1 TIR
12 TIRANT
1 TIRING
1 TIRIC
1 TIRISK
1 TIRISLUENT
1 TIRIG
1 TIRI
2 TIRIET
1 TIRISTING
6 TIRI77
6 TIRIBILICAL
1 TIRIEN
4 TIRIEN
1 TIRIEN

23 SLA
1 SLIDE
3 SLICELY
1 SMOOTH
1 SOLVENT
3 SPICE
19 SPICE
1 SPITE
2 SQUARE
48 STAGE
35 STANDARDS
18 START
2 STARTUP/POWER
1 STEP
2 STEPS
1 STRANDS
1 STRANG
1 STI20
13 SUPPLY
11 SURFACE
26 SWITCH
3 SYSTEMS
6 T-4127A
23 TABLE
1 TANK
10 TE
7 TEMPERATURE
2 TEXTILE
1 THEIR
3 THESE
1 THROUGH
4 THROTTLE
5 TIE
6 TIGHTEN
68 TM
2 TONGUE
4 TOOLS
1 TOUCH
4 TRACK
2 TRAINING
1 TRANSPORTATION
1 TRIANGLE
2 TUPE
2 TUNING
19 TRU
2 T4191A
1 UNASSEMBLED
1 UNHOOK
1 UNSTRUCTURED
9 UP

1 SLACK
1 SLIGHTLY
2 SMALL
1 SMEN
1 SMOE
1 SPECIAL
2 SPLICED
1 SPRAY
1 SQUARELY
2 STAGES
5 STAIRWAY
2 START-STOP
1 STATIONARY
2 STEPS
2 STORAGE
2 STRAPS
1 STRONG
4 STENOGRAPHS
2 SPRINT
4 SURFACES
7 SUTURES
1 T-BELTS
7 T-4191A
1 TACTICAL
9 TEE
1 TEC
2 TEH
3 TEAL
7 THEM
2 THEY
4 THREADS
50 THROUGH
1 TIE
2 TIGHTENED
319 TO
1 TONGUES
5 TOP
1 TOR
6 TRACTOR
3 TRANSFER
2 TRAPPED
13 TRIPLO
1 T-BING
1 TIPS
1 TISSO
4 U-BRACKETS
1 UNCOVERED
13 UNIT
5 U-PACKAGE
1 U-MILL

13 SLIT
1 SMALLER
7 SO
2 SOUND
1 SPECIFIED
1 SPLICES
1 SPRING
2 ST-120
8 STAD
1 STANDS
1 STARTS
1 STATUS
1 STOCKPILE
14 STONE
1 STRIKE
6 STRUCTURAL
2 SUFFICIENT
1 SUPE
9 SUSPENDED
2 SWING
1 T-1500A
1 T-436B
1 TAILGATE
8 TASH
2 TECHNICAL
7 TENT
64 THAT
13 THEN
1 THERE
18 THREE
1 THRU
3 TIECDOWN
31 TIME
2 TOGETHER
2 TOC
25 TORAGE
3 TOWARD
16 TRAILER
12 TRANSLATING
8 TRAVEL
2 TROUGH
24 TURN
1 TWISTED
1 TISSO
1 U-SHAPED
13 UNDER
2 UNLESS
1 UNSCREW
6 UPPER

COUNT1 WORD1

1 UPRIGHT
 22 USING
 5 VALVES
 1 VENTILATION
 1 VERIFYING
 7 VOLTAGE
 1 W/ST
 3 WEAPONS
 7 WEATHER
 1 WEATHER
 1 WFT
 2 WHEE
 4 WHEELS
 170 WITH
 12 WISS
 11 WICKER
 2 XI

COUNT2 WORD2

4 UPRING
 2 V
 9 VALE
 2 VENTING
 4 VERTICAL
 2 VOLTMETER
 36 WAT-BA
 1 WATCHING
 1 VENC
 1 WEATHERPROOF
 7 WHEEL
 6 WHICH
 1 WIPE
 1 WITHDRAW
 2 WICKING
 1 WICKER-BOOM
 1 XG-1

13 WBE
 3 VALVE
 7 VEHICLE
 1 VEYS
 1 VERTICALLY
 4 VOLTMMETERS
 1 WAKING
 5 WAT-R
 1 WEAPOONS
 1 HEIGHT
 5 WHEELS
 10 WHELE
 1 WIPES
 31 WITHIN
 1 WIKY
 17 WICKCH
 2 YELLOW
 5 YOUN

7 USED
 32 VALVE
 3 VENT
 8 VERIFY
 1 VISUAL
 1 W/O
 7 WARNINGS
 2 WAY
 6 WEAPONS
 1 WELL
 30 WHEN
 56 WILL
 1 WIRING
 14 WITHOUT
 1 WOULD
 17 WS
 59 YDL
 3 ZONE

13 HOLD
13 SLIP
13 JUMP
12 REFER
12 ASSEMBLE
12 CHECK, ISC
12 END
12 STAIRWAY
11 W. GEORGE
11 GUA
11 H
11 OPERATING
11 SURFACE
12 CLOSE
10 MOVE
10 LENGTH
10 PERSONNEL
10 SECONDS
10 T
9 CHECK
9 FIGURES
9 LIGHTS
9 PUMP
9 TIRE
8 WITHIN
8 ONE-TW
8 BROADCAST
8 HAZARD
8 LIGHTS
8 LEAST
8 OTHER
8 PRESS
8 STAND
8 OPTICAL
7 BARRIERS
7 FIFTH
7 SIGHT
7 LIGHT
7 POSSIBLE
7 DEPART
7 TRAINING
7 THIS
7 APPROX
6 ATTACHED
6 COMPLETE
6 COMPERS
6 DIRECTION
6 FIREFIGHTING
6 IDENTIFY
6 ITS

13 INTO
13 SUPPLY
13 UNIT
12 ALINE
12 ASSEMBLED
12 CONNECTED
12 FLY
12 TOOLKIT
11 AREA
11 CMA
11 HEATING
11 PANEL
11 WRECKER
10 DRIVER
10 TAIL
10 LINES
10 POINT
10 SOCKET
10 WHEEL
9 CYLINDER
9 FULLY
9 MAST
9 RETAINER
9 UP
8 CAUTIONS
8 DEPTH
8 FAULTS
8 HAS
8 INDICATORS
8 MAINTENANCE
8 PASS
8 PUSH
8 TASK
8 VERIFY
7 CAREFULLY
7 FREQUENCY
7 LUNCH
7 MATED
7 PRIME
7 POLLERS
7 TEMPERATURE
7 USED
7 WEARIN
6 BLEED
6 CONFIDENCE
6 CUBICLE
6 COES
6 FOREIGN
6 IMAGE
6 IX

13 PARAGRAPHS
13 THEN
13 USE
12 A Y
12 BRANCH
12 CANT
12 LEVER
12 TRAILSLATING
11 ASSUMES
11 F. WARE
11 NON-ELECTRIC
11 HULL
10 A. W. TEE
10 BRCH
10 LINE
10 OPERATION
10 PROPERLY
10 SYSTEM
9 D. W. E
9 ELEMENT
9 W
9 WAVE
9 SIGNAL
9 WIRE
8 POSITIONED
8 DEPTH
8 FEET
8 FEAT
8 LAUNCHER
8 WY
8 POSITIONED
8 SELECT
8 T. ACTOR
7 A. MILITARY
7 CONNECTIONS
7 HIGH
7 LEFT
7 W. S
7 PULPER
7 SH
7 TEST
7 VEHICLE
7 WHEEL
6 BELTS
6 COUNTERCLOCKWISE
6 CUT
6 D. CT
6 FUNCTIONS
6 INSERT
6 X

13 PREFACE
13 TRIPOD
12 AC
12 APPLIED
12 CLAY
12 DIRECTED
12 SHOULD
12 MARK
11 BALL
11 FUEL
11 NUCLEAR
11 SHUT
10 APPLY
10 HAND
10 LAY
10 OPERATIONS
10 ROTATE
10 SUPERVISOR
9 CENTER
9 EXPLOSIVE
9 LEG
9 PAD
9 SUSPENDED
8 ALLOW
8 CORRECTLY
8 ERECTOR
8 GUIDED
8 HOUSE
8 LOG
8 NO
8 PRECAUTIONS
8 SIDE
8 TRAVEL
7 DEEN
7 ELECTRICAL
7 HYDRAULIC
7 LIFTING
7 PINS
7 REMOVED
7 SWITCHES
7 THEM
7 VOLTAGE
6 ATOMIC
6 CLEAR
6 COVERS
6 DAMPENER
6 EXPLOSIVES
6 HIGH-PRESSURE
6 INSPECTION
6 LAYING

COUNT 1 WORDS

4 ACCEPTING
4 ACROSS
4 ALATE
4 SAID
6 STRUCTURAL
4 UPPER
4 WAVE
4 WAS
4 OFF
4 CLIP
5 CONFIGURATION
5 EXHAUST
5 FOLLOWING
5 H-410
5 KINGPIN
5 LEVERS
5 MOVABLE
5 SEAL
5 POSITIONING
5 PROTECTION
5 RATE
5 RLY
5 SECURING
5 TOP
5 TUBES
4 ALIGNED
4 BELL
4 BUCK
4 BUREAU
4 BURN
4 CAPTIVE
4 CHARGING
4 COUPLING
4 DESTRUCT
4 ELEVATION
4 FINISH
4 FULLY
4 GALL
4 INCH
4 J1
4 LOCATING
4 MECHANISM
4 MEAT
4 PNEUMATIC
4 PROCEDURE
4 PROJECT
4 SHUTOFF
4 SING
4 TUBS
4 UNWIND

COUNT 2 WORDS

6 LOOSEN
4 PASS
4 PREUSE
6 SERVICE
6 T-4127A
6 WEAPONS
5 ACCEPT
5 BATTERY
5 CASE
5 CLIPS
5 CONNECTION
5 EXTENDED
5 FOOT
5 HALF
5 LASER
5 LOCKPIN
5 MI
5 NUTS
5 PREPARED
5 RAIL
5 RECORD
5 SCREWS
5 STANCHY
5 UNPACKAGE
5 YORK
4 ALIGNMENT
4 APPROXIMATELY
4 BAGS
4 BOARD
4 BURNING
4 CARAVING
4 CHECKS
4 DAMAGE
4 DETONATION
4 EMERGENCY
4 FIRES
4 GOVERNOR
4 HARDWARE
4 INDICATION
4 J2
4 MASTER
4 HOSE
4 NUMBER
4 POSITIONS
4 PROGRAMMER
4 REMAIN
4 SKILL
4 THREADS
4 TRACK
4 VERTICAL

COUNT 3 WORDS

6 MAKE
6 ORDER
6 PROTECTIVE
6 SIX
6 TIGHTEN
6 WHICH
5 AGAINST
5 BLAST
5 CHAINS
5 COMPONENTS
5 DISTANCE
5 FILLAGES
5 FREE
5 HEELS
5 LEGS
5 PACE
5 PADS
5 PREVENTIVE
5 RAISE
5 REFER
5 SHAT
5 TELESCOPE
5 VALUES
4 ACTUATOR
4 AFTS-110
4 ASSISTANCE
4 BAK
4 BATH
4 BAT
4 CENTERED
4 COMPLICITY
4 COMPLICATIONS
4 DISTRIBUTION
4 EXTRA
4 FITTLY
4 GEARSE
4 HOLE
4 INTERSTAGE
4 L
4 MATE
4 M2
4 OTHER
4 PRECONDITION
4 PSIG
4 RFB
4 SUBPARAGRAPHS
4 THROTTLE
4 U-BRACKETS
4 VOLTMETERS

COUNT 4 WORDS

6 MANUALLY
6 PERFORMED
6 RETAINING
6 STUPEID
6 T4127A
5 ATTACHING
5 BOLT
5 CLEAN
5 CONDITICNER
5 ENGAGE
5 FM
5 GEN
5 IMMEDIATE
5 LENS
5 METERS
5 PAC
5 PIN
5 PPINING
5 RAISED
5 ROLLER
5 SECTIONS
5 TIE
5 WATER
4 AIRBRAKE
4 ANNOUNCES
4 AWAY
4 BEAMS
4 BRACES
4 CANNOT
4 CHAIN
4 COUNTDOWN
4 DESIGNATED
4 DOORS
4 FILLING
4 FIVE
4 GREEN
4 H-211B
4 INVOLVING
4 LAUNCHING
4 MATERIAL
4 M33
4 PER
4 PRESTART
4 PTS/PS
4 SANDBAGS
4 SURFACES
4 TIGHT
4 UNLOCK
4 WINDOW

COUNTY WORDS

1 LESSON
1 LIMIT
1 LOCATION
1 MESSAG
1 MALLATORY
1 METEOR
1 MESSINE
1 MISSING
1 MOVABLE
1 NUMBER
1 NERVAL
1 NOTIFIED
1 OBTAINER
1 ONLY
1 ORIGIN
1 OVERLAPS
1 PAL
1 PART
1 PHYSICAL
1 PIVOT
1 PLEWER
1 PRESSURIZED
1 PRIOR
1 PROPOSITION
1 PULLING
1 RAIL
1 QUICKLY
1 RADIAN
1 REALING
1 REC
1 RELATIVELY
1 RESULT
1 RECTOR
1 REPOSTAT
1 RETARY
1 RUST
1 SEARCHES
1 SEARCHABLE
1 SALT
1 SHELTER
1 SHORTENED
1 SIMULATE
1 SILEN
1 SLIP
1 SUCVANT
2 SPECIFIED
1 SPRAY
1 STATUS
1 STATUS
1 STAIRS

COUNTY WORDS

1 LEVELED
1 LIQUID
1 LOCKING
1 MAINTAIN
1 MARKED
1 METHOD
1 MISSILE/
1 MIX
1 NEVER
1 NEEDED
1 NONEXPLOSIVE
1 O
1 OCCUPIED
1 OPERATORS
1 OUTSIDE
1 P
1 PAN
1 PARTIALLY
1 PICTURE
1 PLIERS
1 PRECONDITIONED
1 PREVENT
1 PRIOR
1 PROTECTED
1 PURPOSE
1 Q
1 RACKS
1 RAPIDLY
1 READY
1 REDUCED
1 RELEASED
1 RESIDE
1 RETA
1 REPOSTATS
1 ROLLER
1 SAFELY
1 SELF-CONTAINED
1 SERVICER
1 SHAFT
1 SHIELDING
1 SHUTTER
1 SINGLE
1 SLACK
1 SMALLER
1 SOME
1 SPLICES
1 SPRING
1 STARE
1 STEEL
1 STRIKE

COUNTY WORDS

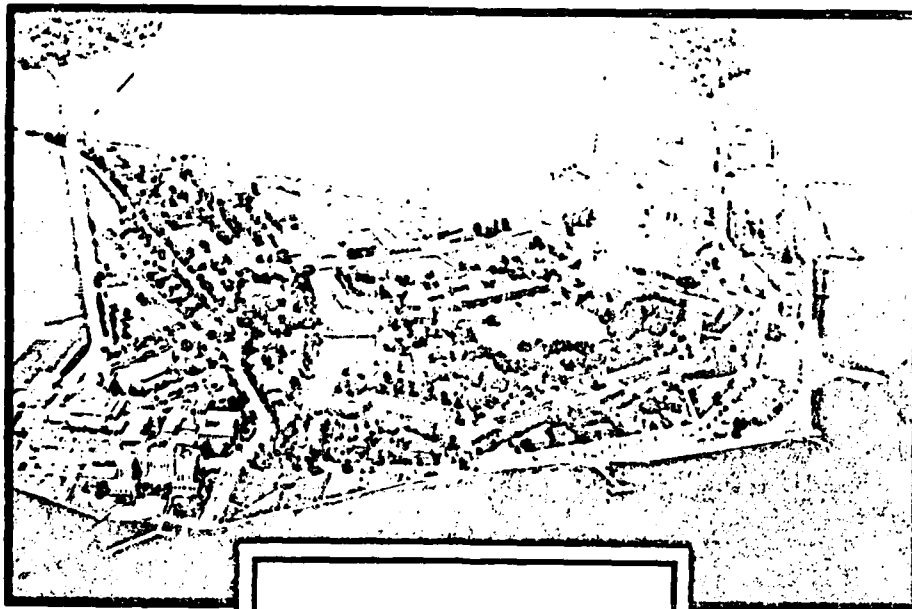
1 UNWELING
1 LISTED
1 LUCKING
1 MAKING
1 MATERIALS
1 MIGHT
1 MISSILE/GENERATOR
1 MORE
1 MARR
1 MTH
1 MUSE
1 UNLOCK
1 OFFICE
1 OPTIONAL
1 OVERLAP
1 OVERCARGO
1 PARTIALS
1 PART
1 PARTIALS
1 PARTIALS
1 PRECONDITIONING
1 PRIMACORD
1 PRIME
1 PULLED
1 PULPING
1 Q
1 RADIATION
1 REACHES
1 RECHECK
1 RAIL
1 REMOTE-LOCAL
1 RESYS
1 RETRACTED
1 RESSIDE
1 REWIND
1 SC-5100-9A-06-446
1 SENSITIVE
1 SETS
1 SHAPE
1 SHIPPING
1 SIDES
1 SIX-INCH
1 SLIT
1 SOUTH
1 SOURCE
1 SPOT
1 SPRINGS
1 STRATS
1 STEP
1 STRIKING

COUNTY WORDS

1 LEVELS
1 LOCAL-REMOTE
1 LOOP
1 MAN
1 MEASURE
1 MILITARY
1 MISSILES
1 MOST
1 N
1 NINE
1 NOTES
1 OBJECTIVE
1 OV-10B-GSC
1 ORGANIZATIONAL
1 OVERLAPPING
1 PAI
1 PARALLELING
1 PERMITTED
1 PINTLE
1 PIRTS
1 PREPOSITIONED
1 PRIMED
1 PROJECTILE
1 PULLING
1 PAR
1 QUADRANT
1 RADIOACTIVE
1 READINESS
1 RECORDED
1 REFERENCE
1 RESCUE
1 RESULT
1 RETURNED
1 ROLL
1 RUNOFF
1 SCATTERED
1 SEPARATE
1 SETTING
1 SHARP
1 SHOCK
1 SIMILAR
1 SKID
1 SLIGHTLY
1 SNOW
1 SPECIAL
1 SPOTS
1 SQUARELY
1 STATIONARY
1 STOCKPILE
1 STRING

HEADQUARTERS
UNITED STATES ARMY TRAINING AND DOCTRINE COMMAND
FORT MONROE, VIRGINIA 23651

DATA CONTROL NUMBER
IOD NO / PROJECT NO



Word Frequency Analysis

MOS: 15E

Skill Level 2

PREPARED BY: OPERATIONS DIV, DPFO

ATOP FORM 109-1 Oct 66 Feb 60 edition may be used until exhausted.

COPY _____ OF _____ COPIES

**HEADQUARTERS
UNITED STATES ARMY TRAINING AND DOCTRINE COMMAND
FORT MONROE, VIRGINIA 23651**

DATA CONTROL NUMBER

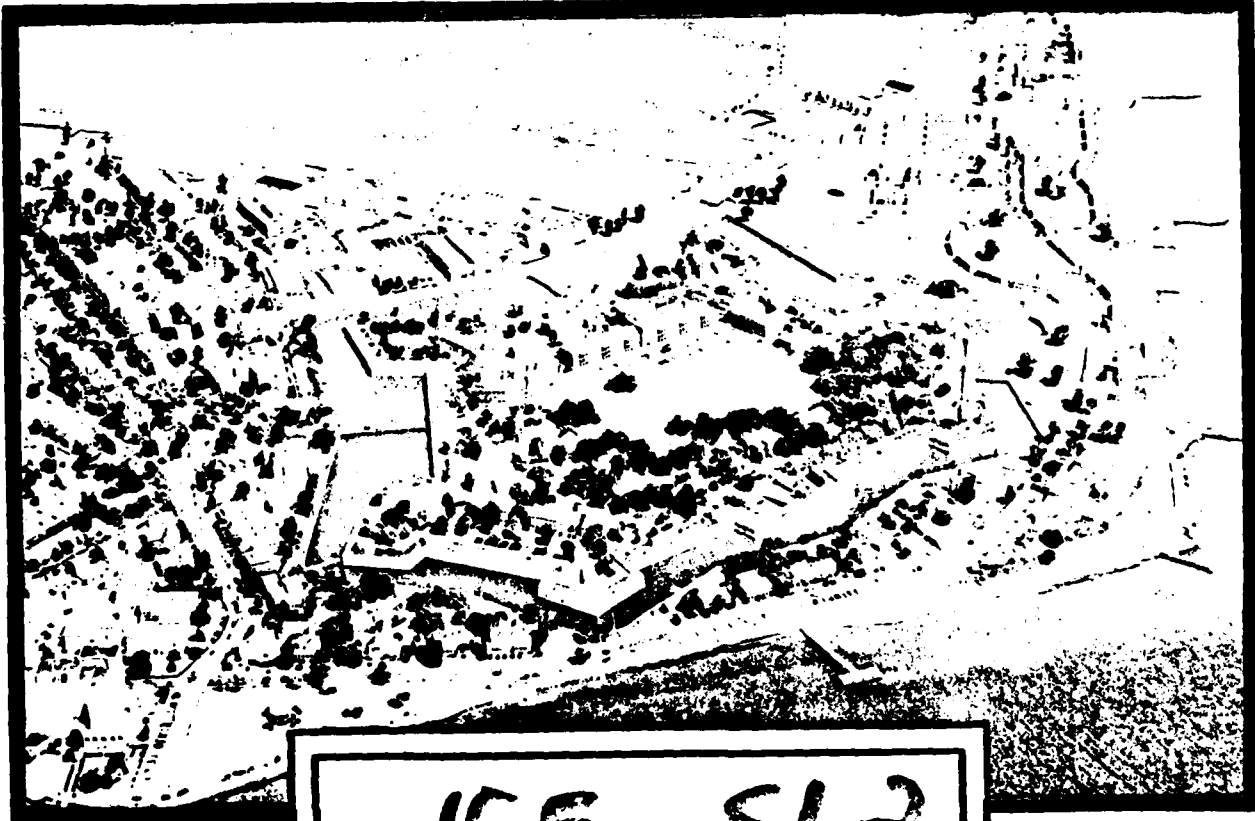
Job No/Proj No

EA

WFA

SEP 5 1980

ORAD



ISE SL2

MOS 15E SKILL 2

DATE 80255 1613 PAGE 1
COLN4 WORD4

MOS WORD LISTING/ASCENDING SEQUENCE

COUNT1 WORD1

COUNT2 WORD2

COUNT3 WORD3

2 ACCORDANCE
1 ACS
6 ACFT
5 AFTER
5 ALERT
4 ALLOW
40 AN
5 ANNOUNCE
1 ANOTHER
22 ARE
1 ARTILLERY
2 ASSEMBLED
1 ASSISTANCE
2 ATOMIC
3 ATTACHMENT
2 AUTO-SEQ
1 AVAILABLE
1 BACK
9 BASE
13 BEAM
3 BEFORE
4 BENEATH
1 BINDERS
1 BLOCK
2 BOLTS
4 BREAKER
2 BUNDLE
1 BYPASS
9 CABLES
1 CANNOT
1 CAUTION
25 CHAPTER
7 CHECK
2 CHOCK
1 CLAMPS
3 CLOSE
1 COMMUNICATIONS
1 COMPRESSED
17 CONDITIONS
1 CONFIDENCE/STANDARD
3 CONNECTION
6 CONTAINER
5 CORRECT
21 COUNTDOWN
3 COVERS
2 CREWMAN
2 CURBSTOE
1 DA-8D

143 A
4 ACCUM
9 ACTION
1 ADJUST
5 AIR
1 ALINE
3 ALONG
170 AND
1 ANNOUNCED
5 ANY
6 AREA
12 ARU
2 ASSEMBLIES
4 ASSISTANT
6 ATTACH
5 ATTACK
2 AUTOMATIC
1 AWAY
6 BALL
2 BATTERY
3 BEAMS
1 BEGIN
1 BENT
1 BLANK
1 BLUNTED
11 BOOM
3 BREAKERS
4 BURST
34 C
1 CABLING
2 CAREFULLY
8 CAUTIONS
1 CHAPTERS
8 CHECKS
1 CHOCKED
2 CLEAN
1 CLOSED
9 COMPLETE
1 COMPRESSION
5 CONDUCTED
3 CONFIGURATION
2 CONNECTIONS
1 CONTINUE
1 CORRECTIONS
2 COUNTED
1 CRACKS
1 CREWMEMBERS
2 CYLINDERS
1 DAMAGE

1 ABOVE
9 ACCUMULATOR
1 ACTIONS
1 ADJUSTMENT
1 INTRODCTS
1 ALINEMENT
1 ALSO
3 ANGLE
2 ANNOUNCEMENT
2 APPLIED
4 ARM
13 AS
14 ASSEMBLY
5 ASSISTANTS
6 ATTACHED
12 AUTO
2 AUTOMATICALLY
17 AZIMUTH
6 BAND
2 BCC
3 BECAUSE
5 BEING
2 BETWEEN
1 BLAST
5 BOARD
6 BCCMS
1 BPUSH
1 BUT
13 CABLE
1 CALIBRATION
2 CARTRIDGE
4 CENTER
4 CHARGE
2 CHIEF
7 CIRCUIT
4 CLEANED
1 CM2
3 COMPLETED
8 CONDITION
1 CONDUCTING
4 CONNECT
3 CONNECTOR
1 CONTINUITY
5 CORRECTLY
4 COUNTING
8 CRADLE
19 CREWMEN
28 D
2 DATA

2 AC
1 ACROSS
5 ACTUATOR
2 ACT
2 AIRLINES
32 ALL
3 ALWAYS
1 ANNOUNCED
12 ANNOUNCES
5 APPLY
1 ARMY
1 ASSEMBLE
5 ASSIST
24 AT
2 ATTACHING
2 AUTO-ARM-BYPASS
1 AUX
53 B
1 BARS
24 BE
9 BEEN
4 BELCH
1 BEZEL
3 BLEED
8 BOLT
2 BOX
1 BULK
5 BY
2 CACLED
1 CAN
4 CARTRIDGES
2 CHALK
4 CHARGING
1 CHIPS
7 CLAMP
8 CLEAR
8 COLUMN
1 COMPLETION
4 CONDITIONED
12 CONFIDENCE
4 CONNECTED
8 CONTACT
14 CONTROL
12 COUNT
3 COVER
1 CREW
4 CURB
2 CA
1 CATES

ALPHA LIST

COUNT1 WORD1	MOS WORD LISTING/ASCENDING SEQUENCE COUNT2 WORD2	COUNT3 WORD3	DATE 80255 1613 PAGE 2 COUNT4 WORD4
4 DAVIT	1 DAYS	5 DC	1 DEENERGIZE
14 DEFECT	2 DEFECTS	1 REFLECTOR	1 DENT
1 DEPENDING	8 DEPTH	6 DEVICE	1 DEVICES
6 DIAL	71 DIRECT	16 DIRECTED	1 DIRECTING
1 DIRECTLY	2 DIRT	5 DISCONNECT	4 DISPLAY
3 DISPLAYS	3 DISTANCE	1 DISTRIBUTION	11 CC
2 DEES	1 DONE	1 DOOR	6 CONN
2 DPAW	1 DUCT	1 DUCTS	12 CURING
3 DUTIES	18 E	1 EACH	2 EDGE
3 EIGHT	77 EL	1 ELAPSED	2 ELECTRICAL
1 EMLACE	10 EMLACED	1 EMLACEMENT	25 END
3 ENERGIZE	1 ENERGIZED	8 ENFORCE	1 ENGAGED
1 ENTANGLED	1 ENTERED	23 ENV	5 EQUIPMENT
1 EQUIPPED	1 ERB	1 ERECT	12 ERECTOR
7 ERECTOR-LAUNCHER	1 ERROR	1 ESTABLISH	2 ETC
5 EVACUATE	1 EXAMPLE	1 EXCESSIVE	4 EXIST
4 EXPENDABLES	12 EXPLOSIVE	7 EXT	3 EXTEND
3 EXTENDED	1 EXTERIOR	1 EXTREME	12 F
1 FCM	1 FAULTS	1 FIELD	1 FIFTH
26 FIGURE	4 FIGURES	1 FILTER	3 FINAL
2 FIND	17 FIR	1 FIRE	5 FIRING
15 FIRST	1 FITTING	3 FITTINGS	1 FLAT
2 FLUID	1 FLUSH	3 FOLLOWING	27 FOR
4 FOREIGN	2 FORM	1 FORWARD	10 FOUR
16 FROM	15 FRONT	1 FULLY	9 FUNCTIONS
10 G	11 GAGE	1 GAGES	1 GASKETS
5 GENERATOR	17 GIVEN	1 GAGES	2 GREASE
3 GREASED	1 GROOVES	9 GROUND	1 GRUP
1 GSG	14 GUIDANCE	13 GUIDE	5 GUIDED
8 H	1 H-416	1 H-4211B	1 HALF
1 HAND	2 HANDLE	1 HANDLED	1 HANDLES
5 HANDLING	4 HARDWARE	4 HAS	5 HAVE
1 HEAD	2 HEADING	2 HEADSET	1 HFI
2 HEATING	1 HEIGHT	1 HELD	3 HIGH
2 HIGHEST	6 MOIST	21 HOISTING	12 HOLD
1 HCLFS	2 HOCK	2 HORN	1 HRTS
2 HCR	1 HTRS	5 HYD	7 HYDRAULIC
2 H4211B	15 I	2 IAW	26 IF
2 IGNITER	3 II	3 III	56 IN
2 INCH	1 INDEX	1 INDICATE	1 INDICATED
2 INDICATES	2 INDICATING	27 INDICATOR	5 INDICATORS
2 INDIVIDUAL	1 INITIAL	1 INITIATOR	4 INITIATORS
17 INP	1 INSERT	10 INSPECT	7 INSPECTION
1 INSPECTIONS	1 INSTALL	11 INSTALLATION	1 INSTALLATION
7 INSTALLED	26 INSURE	17 INT	2 INTERFACING
1 INTERFERE	1 INTERFERING	5 INTERSTAGE	1 INTO
3 IRI	53 IS	5 IT	4 ITEM
1 IV	4 IX	3 J	20 JACK
2 JACKS	2 JET	1 JCINT	22 JUS
2 K	1 KINGPIN	1 LABEL	1 LAID

COUNT1 WORD1

1 LAMPS
7 LAUNCH
2 LCG
1 LEG
23 LEVEL
9 LIFT
1 LIMITS
4 LOAD
1 LOCKNUT
1 LOOSE
2 MAIN
1 MANAGEMENT
17 MARK
20 MATING
1 MEASUREMENT
1 MILS
1 MISSION
1 MONITOR
1 MOVE
2 M797
3 NECESSARY
2 NONEXPLOSIVE
1 NOTES
2 NUTS
13 OFF
1 ON/153
1 OPERATES
54 OPERATOR
2 OPTIONAL
1 OTHER
1 PADS
4 PANEL
6 PARAGRAPHS
2 PENCIL
1 PERFORMS
1 PHYSICAL
5 PINE
1 PLATFORM
1 PMS
1 PORTIONS
27 POWER
2 PREFIRE
1 PRESET
2 PREVENTIVE
4 PROCEDURE
1 PROPER
1 PROTECTOR-SLING
30 PTS
2 PUSH
1 RAISE

COUNT2 WORD2

1 LANYARDS
12 LAUNCHER
2 LEAD
2 LEGGED
4 LEVELING
2 LIGHTED
10 LINE
3 LOCAL
2 LOCKPIN
7 LOW
1 MAINTAIN
18 MANUAL
4 MAST
4 MATTER
18 MEASURES
10 MINUTES
6 MGD
1 MORE
3 MOVING
17 NAM
3 NEEDED
31 NOT
6 NOTIFIED
1 OBJECT
2 OIL
6 ONE
3 OPERATING
16 OPERATOR'S
50 OR
29 OUT
6 PAGE
1 PANELS
5 PASS
17 PERFORM
1 PERSHING
1 PICTURE
17 PLA
2 PLATOON
12 POINT
1 PORTS
1 PRE-REMOTE
8 PREPARE
9 PRESS
2 PREVIOUSLY
5 PROCEDURES
2 PROPERLY
10 PS
2 PTS/PS
1 PUT
1 RAISING

COUNT3 WORD3

17 LAS
1 LAUNCHING
1 LEAKS
2 LEGS
2 LEVER
1 LIGHTS
1 LINK
2 LOCATE
1 LOCKS
10 LOWER
4 MAINTENANCE
23 MAR
11 MATED
3 MAY
3 MEASURING
53 MISSILE
7 MODE
3 MOTOR
1 MSL
2 NCCIC
1 NICKS
10 NOTIE
6 NOTIFY
21 COSERVE
2 CHIT
3 OPEN
5 OPERATION
1 OPERATORS
1 ORDERING
6 COVER
26 PAGES
17 PAP
2 PCC
19 PERFORMANCE
8 PERSONNEL
1 PIN
3 PLACE
1 PLUG
2 PORT
23 POSITION
5 PRECAUTIONS
5 PREPARED
7 PRESSURE
17 FRI
3 PROGRAMMER
3 PROPULSION
1 PSI
1 PULL
17 QUA
1 RATHER

COUNT4 WORD4

1 LAST
1 LAY
3 LEAST
2 LEFS
1 LEVERED
1 LIKE
15 LIT
5 LOCK
1 LONG
2 LOWEST
9 MAKE
1 MARCH
1 MATED/MPD
11 MEASURE
3 MECHANISM
2 MISSILE'S
5 MOUNTAINILY
2 MOUNTED
4 MESA
1 NEAR
1 NITROGEN
8 NOTED
2 NSA
78 OF
39 ON
12 OPERATE
5 OPERATIONS
1 OPTICA
1 ORGANIZATIONAL
1 OVERPRESSURE
1 PAINT
22 PARAGRAPH
2 FEAR
2 PERFORMED
2 PERTAINING
1 PIVMED
1 PLACEMENT
1 PM
1 PORTION
5 POSITIONING
1 PREERECTICN
1 PREPOSITIONED
2 FUSE
1 PRISM
1 PROGRAMMER-TEST
1 PROTECTIVE
2 PSTG
7 PUMP
4 QUICK
5 READINESS

COUNT 1 WORDS

8 READING
1 RECORD
13 REFERENCES
1 REMAINDER
1 REPORT
3 PERTAINING
1 REFUSED
16 RING
1 ROCKET
10 ROPES
4 S
1 SC
15 SECOND
3 SECURING
9 SELECTOR
6 SEQUENTIAL
4 SETTINGS
1 SHOULD
2 SIDE
2 SIMULATOR
1 SKIRT
7 SLOPE
1 SOCKET
3 SOUNDC
3 SPRING
1 STAGES
16 STANDARDS
1 STATUS
2 STORE
3 SUBTRACT
1 SUPPORTED
6 SUSPENDED
14 SYSTEM
23 TAB
1 TAKE
1 TEN
7 TEST
255 THE
4 THIS
32 THROUGH
2 TIGHTEN
47 TM
2 TOP
1 TRACTOR
3 TWO
2 UNIT
23 UNTIL
1 UPPER
3 VALVE
1 VERIFICATION

COUNT 2 WORDS

5 READY
1 RECOVER
8 RELEASE
4 REMOVAL
7 REQUIRED
1 RETR
1 REVERSAL
3 RINGS
1 RED
1 ROTATE
1 SAFE
17 SCA
77 SECTION
18 SEE
2 SEPARATION
4 SERVICES
1 SHACKLE
6 SHOW
1 SIGHT
1 SITE
11 SLA
3 SLOWLY
2 SOFT
2 SPECIAL
2 SPRINGS
8 STAND
12 START
1 STEADY
5 STRUCTURAL
3 SUPERVISE
6 SURE
2 SWING
1 T-4127A
22 TABLE
3 TAPE
1 TENSION
2 TESTING
2 THEIR
1 THOROUGH
1 THRUST
7 TILT
140 TO
5 TORQUE
1 TRAILER
1 UNCORRECTED
1 UNLIGHTED
3 UP
5 USE
1 VALVES
1 VERIFIED

COUNT 3 WORDS

1 REAR
4 REFER
1 RELEASED
11 REMOVE
1 REQUIREMENTS
3 RETRACT
2 RFD
4 ROAD
1 ROLLER
1 ROUND
18 SAFETY
1 SCRATCH
6 SECTIONS
2 SELECT
9 SEQUENCE
20 SET
1 SHAFT
3 SHUT
3 SIGNAL
1 SIZE
9 SLING
1 SMOOTHLY
1 SOUND
2 SPECIFIED
3 ST-120
8 STANDARD
7 STATION
1 STOP
1 STRUTS
6 SUPERVISOR
9 SURFACE
35 SWITCH
1 T-4191
2 TABLES
12 TASK
2 TERMINATE
3 THAN
10 THEN
2 THREADS
1 TIE
7 TIME
10 TOOLKIT
2 TORQUED
8 TRANSFER
1 UNDAAGED
1 UNPACKAGE
1 UPHILL
3 USED
4 VANE
17 VERIFY

COUNT 4 WORDS

3 RECAPTURE
15 REFERENCE
2 REMAIN
5 REMOVED
1 RESPECT
2 RETRACTED
4 RIGHT
2 ROADSIDE
3 ROLLERS
1 RUNNING
3 SAVE
1 SCREW
4 SCOPE
2 SELECTED
5 SEQUENCES
1 SETSCREW
1 SHIELDS
1 SHUT DOWN
1 SIGNALING
2 SKILL
1 SLINGS
1 SO
1 SOUNDS
6 SPLICE
28 STAGE
1 STANDARD/CONFIDENCE
2 STATION/POWER
2 STOPS
1 ST120
3 SUPPORT
6 SURFACES
4 SWITCHES
6 T-4191A
1 TAILPLUG
1 TECHNICAL
1 TERMIN
41 THAT
1 THEY
8 THREE
2 TIGHT
1 TIRES
7 TOOLS
1 TIGHTENING
11 TURN
1 UNDERSIDE
4 UNPACKAGING
1 UNLOCK
9 USING
2 VEHICLE
1 VERTICAL

COUNT1 WORD1

1 VIEW
8 WARNINGS
4 WEIGHT
9 WHEELS
22 WILL
46 WITH
25 WRECKER

COUNT2 WORD2

2 VISIBLE
2 WAS
1 WERE
39 WHEN
1 WINDOW
13 WITHIN
4 WRENCH
2 WSS

COUNT3 WORD3

1 WAIT
1 WASHERS
6 WHO
1 WHERE
1 WIPE
10 WITHOUT
2 WRITE
18 YOU

COUNT4 WORD4

24 WARHEAD
2 WEAPONS
1 WHEEL
1 WHICH
1 WIRED
1 WRK
22 WS
1 ZEROED

COUNT1 WORD1

COUNT2 WORD2

COUNT3 WORD3

COUNT4 WORD4

255 THE
78 OF
56 IN
53 MISSILE
41 THAT
35 SWITCH
31 NOT
28 STAGE
26 FIGURE
25 CHAPTER
24 BE
23 WAR
22 ARE
22 WILL
21 OBSERVE
19 CREW/EN
18 MANUAL
18 YOU
17 GIVEN
17 MARK
17 PLA
17 VERIFY
16 RING
15 I
14 CONTROL
13 AS
13 OFF
12 ANNOUNCES
12 COUNT
12 F
12 POINT
11 DO
11 MEASURE
10 IMPLACED
10 LINE
10 PS
10 WITHOUT
9 BEEN
9 GROUND
9 SELECTOR
9 USING
8 CHECKS
8 CONTACT
8 H
8 READING
8 THREE
7 CIRCUIT
7 HYDRAULIC
7 LOW
7 REQUIRED

170 AND
77 EL
54 OPERATOR
50 OR
40 AN
34 C
30 PTS
27 FOR
26 IF
25 END
24 WARHEAD
23 POSITION
22 JUS
22 WS
20 JACK
19 PERFORMANCE
18 MEASURES
17 ALTIMUTH
17 INP
17 NAM
17 PRI
16 DIRECTED
16 STANDARDS
15 LIT
14 DEFECT
13 HEAM
13 REFERENCES
12 ARU
12 DURING
12 HOLD
12 START
11 GAGE
11 REMOVE
10 FOUR
10 LOWER
10 ROPES
9 ACCUMULATOR
9 CABLES
9 LIFT
9 SEQUENCE
9 WHEELS
8 CLEAR
8 CRADLE
8 NOTED
8 RELEASE
8 TRANSFER
7 CLAMP
7 INSPECTION
7 MODE
7 SLOPE

143 A
77 SECTION
53 B
47 TM
39 CN
32 ALL
29 CUT
27 INDICATOR
26 INJURE
25 WPECKER
23 ENV
23 TAR
22 PARAGRAPH
21 COUNTDOWN
20 MATING
19 REFERENCE
18 SAFETY
17 CONDITIONS
17 INT
17 PAP
17 CUA
16 FROM
15 FIRST
15 SECOND
14 GUIDANCE
13 CABLE
13 WITHIN
12 AUTO
12 ERECTOR
12 LAUNCHER
12 TASK
11 INSTALLATION
11 SLA
10 G
10 MINUTES
10 THEN
9 ACTION
9 COMPLETE
9 MAKE
9 SLING
8 BOLT
8 COLUMN
8 DEPTH
8 PERSONNEL
8 STAND
8 WARNINGS
7 ERECTOR-LAUNCHER
7 INSTALLED
7 PRESSURE
7 STATION

140 TO
71 DIRECT
53 IS
46 WITH
39 WHEN
32 THROUGH
29 C
27 POWER
26 PAGES
24 AT
22 LEVEL
23 LATIL
22 TABLE
21 HOISTING
20 SET
18 E
18 ST
17 FIR
17 LAS
17 PERFORM
17 SCA
16 OPERATOR'S
15 FRONT
14 ASSEMBLY
14 SYSTEM
13 GUIDE
12 CONFIDENCE
12 EXPLOSIVE
12 OPERATE
11 ROOM
11 PATED
11 TURN
10 INSPECT
10 ACTE
10 TOOLKIT
9 EAS
9 FUNCTIONS
9 PRESS
9 SURFACE
8 CAUTIONS
8 CONDITION
8 ENFORCE
8 PREPARE
8 STANDARD
7 CHECK
7 EXT
7 LAUNCH
7 PUMP
7 TEST

WORD FREE LIST

41-42
Info only

6 BAND
 6 DIAL
 6 MOMENTARILY
 6 OVER
 6 SCIENTIAL
 6 SURE
 6 WHO
 5 ALERT
 5 ASSIST
 5 BOARD
 5 CORRECTLY
 5 EVACUATE
 5 HANDLING
 5 INTERSTAGE
 5 OPERATIONS
 5 PRECAUTIONS
 5 READY
 5 TORQUE
 4 ARM
 4 BREAKER
 4 CHARGE
 4 CONNECT
 4 DAVIT
 4 FIGURES
 4 INITIATORS
 4 LOAD
 4 M656
 4 REFER
 4 S
 4 SWITCHES
 4 WEIGHT
 3 ALWAYS
 3 BECAUSE
 3 CLOSE
 3 CONNECTOR
 3 DISTANCE
 3 EXTEND
 3 FOLLOWING
 3 III
 3 LOCAL
 3 MOTOR
 3 OPEN
 3 PROPULSION
 3 RINGS
 3 SHUT
 3 SPRING
 3 SUPPORT
 3 UP

6 BOOMS
 6 DOWN
 6 NOTIFIED
 6 PAGE
 6 SHOWN
 6 SURFACES
 5 ACTUATOR
 5 ANNOUNCE
 5 ASSISTANTS
 5 RY
 5 DC
 5 FIRING
 5 HAVE
 5 IT
 5 PASS
 5 PREPARED
 5 REMOVED
 5 USE
 4 ASSISTANT
 4 BURST
 4 CHARGING
 4 CONNECTED
 4 DISPLAY
 4 FOREIGN
 4 ITEM
 4 MAINTENANCE
 4 PANEL
 4 REMOVAL
 4 SECURE
 4 THIS
 4 WRENCH
 3 ANGLE
 3 BEFORE
 3 COMPLETED
 3 COVER
 3 DUTIES
 3 EXTENDED
 3 GREASED
 3 IRI
 3 MAY
 3 MOVING
 3 OPERATING
 3 RECAPTURE
 3 ROLLERS
 3 SIGNAL
 3 ST-120
 3 TAPE
 3 USED

6 ATTACHED
 6 CONTAINER
 6 FOIST
 6 NOTIFY
 6 PARAGRAPHS
 6 SPLICE
 6 SUSPENDED
 5 AFTER
 5 ANY
 5 ATTACK
 5 CONDUCTED
 5 DISCONNECT
 5 GENERATOR
 5 HYD
 5 LOCK
 5 PINS
 5 PROCEDURES
 5 SEQUENCES
 4 ACCUM
 4 EELW
 4 CARTRIDGES
 4 CLEANED
 4 COUNTING
 4 EXIST
 4 HARDWARE
 4 IX
 4 MAST
 4 PROCEDURE
 4 RIGHT
 4 SERVICES
 4 UNPACKAGING
 3 ATTACHMENT
 3 BLEED
 3 CONFIGURATION
 3 COVERS
 3 EIGHT
 3 FINAL
 3 HIGH
 3 J
 3 MEASURING
 3 NECESSARY
 3 PLACE
 3 RETAINING
 3 SAME
 3 SLOWLY
 3 SUBTRACT
 3 THAN
 3 VALVE

6 BALL
 6 CEVICE
 6 PCD
 6 CNE
 6 SECTIONS
 6 SUPERVISOR
 6 T-4191A
 5 AIR
 5 APPLY
 5 BEING
 5 CORRECT
 5 EQUIPMENT
 5 GUIDED
 5 INDICATORS
 5 OPERATION
 5 POSITIONING
 5 READINESS
 5 STRUCTURAL
 4 ALL
 4 BENEATH
 4 CENTER
 4 CONDITIONED
 4 CURB
 4 EXPENDABLES
 4 HAS
 4 LEVELING
 4 PATTERN
 4 QUICK
 4 ROAD
 4 SETTINGS
 4 VANE
 3 ALONG
 3 BEAMS
 3 BREAKERS
 3 CONNECTION
 3 DISPLAYS
 3 ENERGIZE
 3 FITTINGS
 3 II
 3 LEAST
 3 MECHANISM
 3 NEEDED
 3 PROGRAMMER
 3 RETRACT
 3 SECURING
 3 SCURGE
 3 SUPERVISE
 3 TWC
 2 FC

2 ACCORDANCE
2 APPLIED
2 ATTACHING
2 AUTOMATICALLY
2 BOLTS
2 CAREFULLY
2 CHECK
2 CREWMAN
2 DATA
2 DRAW
2 FIND
2 HANDLE
2 HIGHEST
2 H4211B
2 INDICATES
2 JACKS
2 LEAD
2 LEVER
2 LOWEST
2 1757
2 NUTS
2 PCC
2 PERTAINING
2 PREUSE
2 PSIG
2 RETRACTED
2 SELECTED
2 SKILL
2 SPRINGS
2 SWING
2 THEIR
2 TGP
2 VISIBLE
2 WSS
1 ABOVE
1 ADJUST
1 ALIGNMENT
1 ANOTHER
1 ASSISTANCE
1 BACK
1 BEZEL
1 BLOCK
1 BUT
1 CAN
1 CHIPS
1 CM2
1 COMPRESSION
1 CONTINUITY
1 CREWMEMBERS
1 DAYS

2 AFT
2 ASSEMBLED
2 AUTO-ARM-BYPASS
2 BATTERY
2 BOX
2 CARTRIDGE
2 CLEAN
2 CURBU IDE
2 DEFECTS
2 EDGE
2 FLUID
2 HEADING
2 HOOK
2 LAW
2 INDICATING
2 JET
2 LEGGED
2 LIGHTED
2 MAIN
2 MCOIC
2 OIL
2 PEAR
2 PLATOON
2 PREVENTIVE
2 PTS/PS
2 PFB
2 SEPARATION
2 SCFT
2 STATION/POWER
2 TABLES
2 THREADS
2 TORQUED
2 WAS

1 ACROSS
1 ADJUSTMENT
1 ALSO
1 ARMY
1 AUX
1 BARS
1 BINDERS
1 BLUNTED
1 BYPASS
1 CANNOT
1 CMOCKED
1 COMMUNICATIONS
1 CONDUCTING
1 CORRECTIONS
1 DA-80
1 DEENERGIZE

2 AIRLINES
2 ASSEMBLIES
2 AUTO-SEQ
2 BCC
2 BUNDLE
2 CHALK
2 CONNECTIONS
2 CYLINDERS
2 DIRT
2 ELECTRICAL
2 FORM
2 HEADSET
2 HORN
2 IGNITER
2 INDIVIDUAL
2 K
2 LEGS
2 LOCATE
2 MISSILES
2 NONEXPLOSIVE
2 OMIT
2 PENCIL
2 PORT
2 PREVIOUSLY
2 PUSH
2 ROADSIDE
2 SIDE
2 SPECIAL
2 STOPS
2 TERMINATE
2 TIGHT
2 UNIT
2 WEAPONS

1 ACS
1 AIRDUCTS
1 ANNOUNCED
1 ARTILLERY
1 AVAILABLE
1 BEGIN
1 BLANK
1 BRUSH
1 CABLING
1 CAUTION
1 CLAMPS
1 COMPLETION
1 CONFIDENCE/STANDARD
1 CRACKS
1 CARGO
1 DEFLECTOR

2 ANNOUNCEMENT
2 ATOMIC
2 AUTOMATIC
2 BETWEEN
2 CABLED
2 CHIEF
2 COUNTED
2 EA
2 ECES
2 ETC
2 CRPASE
2 HEATING
2 HTR
2 INCH
2 INTERFACING
2 LCG
2 LESS
2 LOCKPIN
2 MOUNTED
2 NSY
2 OPTIONAL
2 PERFORMED
2 PREFIRE
2 PROPERLY
2 REPAIR
2 SELECT
2 SIMULATOR
2 SPECIFIED
2 STORE
2 TESTING
2 TIGHTEN
2 VEHICLE
2 WRITE

1 ACTIONS
1 ALINE
1 ANNOUNCED
1 ASSEMBLE
1 AWAY
1 BEAT
1 BLAST
1 BULK
1 CALIBRATION
1 CHAPTERS
1 CLOSED
1 COMPRESSED
1 CONTINUE
1 CREW
1 CATES
1 CENT

COUNT1 WORD1

1 DEPENDING
 1 DISTRIBUTION
 1 DUCTS
 1 EMBLACEMENT
 1 ENTERED
 1 ERROR
 1 EXTERIOR
 1 FIELD
 1 FITTING
 1 FULLY
 1 GROOVES
 1 H-4211B
 1 HANDLES
 1 HELD
 1 INDEX
 1 INITIATOR
 1 INSTALLATION
 1 IV
 1 LAID
 1 LAUNCHING
 1 LEVERED
 1 LINK
 1 LOGGE
 1 MATED/WHD
 1 MONITOR
 1 NEAR
 1 OBJECT
 1 OPTION
 1 OVERPRESSURE
 1 PERFORMS
 1 PIN
 1 PLUG
 1 PORTIONS
 1 PREPOSITIONED
 1 PROCFR
 1 PULL
 1 RATHER
 1 RELEASED
 1 RESPECT
 1 ROCKET
 1 ROUND
 1 SCRATCH
 1 SHAFT
 1 SIGHT
 1 SKIRT
 1 SOCKET
 1 STANDARD/CONFIDENCE
 1 STRUTS
 1 T-4191
 1 TEN

COUNT2 WORD2

1 DEVICES
 1 DONE
 1 EACH
 1 ENERGIZED
 1 EQUIPPED
 1 ESTABLISH
 1 EXTREME
 1 FIFTH
 1 FLAT
 1 GAGES
 1 GROUP
 1 HALF
 1 HEAD
 1 HOLES
 1 INDICATE
 1 INSERT
 1 INTERFERE
 1 JOINT
 1 LAMPS
 1 LAY
 1 LIGHTS
 1 LOCKNUT
 1 MAINTAIN
 1 MEASUREMENT
 1 MORE
 1 NICKS
 1 ON/158
 1 ORDERING
 1 PADS
 1 PERSHING
 1 PINCHED
 1 P4
 1 PORTS
 1 PRESET
 1 PROTECTIVE
 1 PUT
 1 REAR
 1 REMAINDER
 1 RETR
 1 ROD
 1 RUNNING
 1 SCREW
 1 SHIELDS
 1 SIGNALING
 1 SLINGS
 1 SOUND
 1 STATUS
 1 ST120
 1 TAILPLUG
 1 TENSION

COUNT3 WORD3

1 DIRECTING
 1 DOCK
 1 ELAPSED
 1 ENGAGED
 1 ERB
 1 EXAMPLE
 1 FAN
 1 FILTER
 1 FLUSH
 1 GASKETS
 1 GSG
 1 HANO
 1 HEAT
 1 WRTS
 1 INDICATED
 1 INSPECTIONS
 1 INTERFERING
 1 KINGPIN
 1 LANYARDS
 1 LEAKS
 1 LIKE
 1 LOCKS
 1 MANAGEMENT
 1 MILS
 1 MOVE
 1 NITROGEN
 1 OPERATES
 1 ORGANIZATIONAL
 1 PAINT
 1 PHYSICAL
 1 PLACEMENT
 1 PMS
 1 PRE-REMOTE
 1 PRISM
 1 PROTECTOR-SLING
 1 RAISE
 1 RECORD
 1 REPORT
 1 REUSED
 1 ROLLER
 1 SAFE
 1 SETSCREW
 1 SHOULD
 1 SITE
 1 SMOOTHLY
 1 SOUNDS
 1 STEADY
 1 SUPPORTED
 1 TAKE
 1 TERRAIN

COUNT4 WORD4

1 DIRECTLY
 1 DUCT
 1 EMBLACE
 1 ENTANGLED
 1 ERECT
 1 EXCESSIVE
 1 FAULTS
 1 FIRE
 1 FORWARD
 1 COUGES
 1 P-416
 1 HANDED
 1 HEIGHT
 1 MTRS
 1 INITIAL
 1 INSTALL
 1 INTO
 1 LABEL
 1 LAST
 1 LEG
 1 LIMITS
 1 LONG
 1 MARCH
 1 MISSION
 1 MSL
 1 ACTES
 1 OPERATORS
 1 OTHER
 1 PANELS
 1 PICTURE
 1 PLATFORM
 1 PORTION
 1 PREERLECTION
 1 PROGRAMMER-TEST
 1 PSI
 1 RAISING
 1 RECOVER
 1 REQUIREMENTS
 1 REVERSAL
 1 ROTATE
 1 SC
 1 SPACKLE
 1 SHUTDOWN
 1 SIZE
 1 SC
 1 STAGES
 1 STCP
 1 T-4127A
 1 TECHNICAL
 1 THEY

COUNTY WORDS

1 THROUGH
1 TORQUING
1 UNDA MAGED
1 UP HILL
1 VERIFICAT ION
1 WAIT
1 WHERE

COUNTY WORDS

1 THRUST
1 TRACTOR
1 UNDERSIDE
1 UPLOCK
1 VERIFIED
1 WASHERS
1 WHICH
1 WIRED

COUNTY WORDS

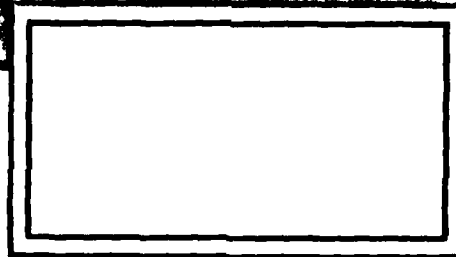
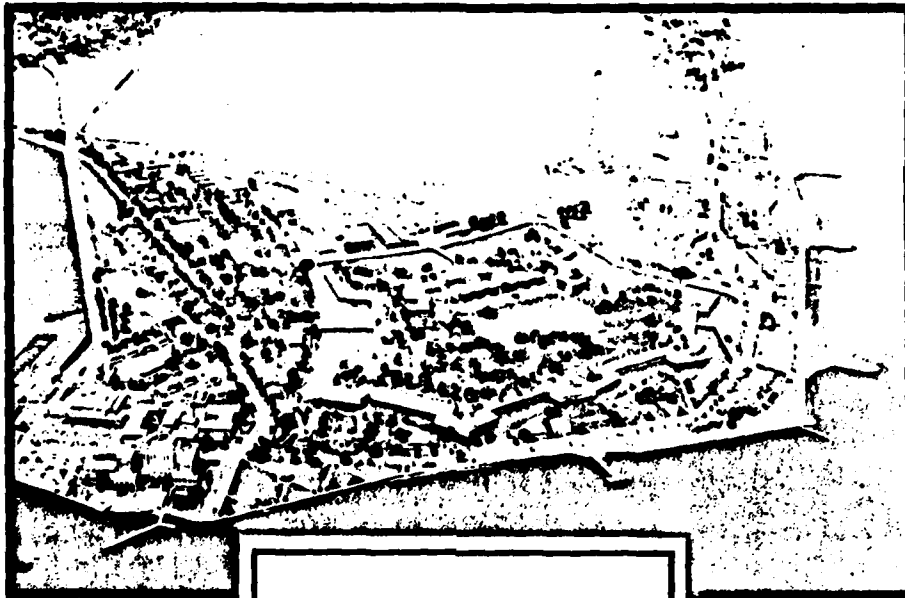
1 TIE
1 TRAILER
1 UNLIGHTED
1 UPPER
1 VERTICAL
1 WERE
1 WINDOW
1 WORK

COUNTY WORDS

1 TIPS
1 UNCORRECTED
1 UNPACKAGE
1 VALVES
1 VISM
1 WHEEL
1 WIPE
1 ZEROED

HEADQUARTERS
UNITED STATES ARMY TRAINING AND DOCTRINE COMMAND
FORT MONROE, VIRGINIA 23651

DATA CONTROL NUMBER /
100 NO / PROJECT NO



PREPARED BY: OPERATIONS DIV, DPFO

FORM
ATOP Oct 58 109-1 Feb 58 edition may be used
until exhausted.

COPY _____ OF _____ COPIES

END

DATE
FILMED

8 8 2

DTIC