



DTIC FILE  
DTIC FILE COPY

3

DATA CONTROL NUMBER

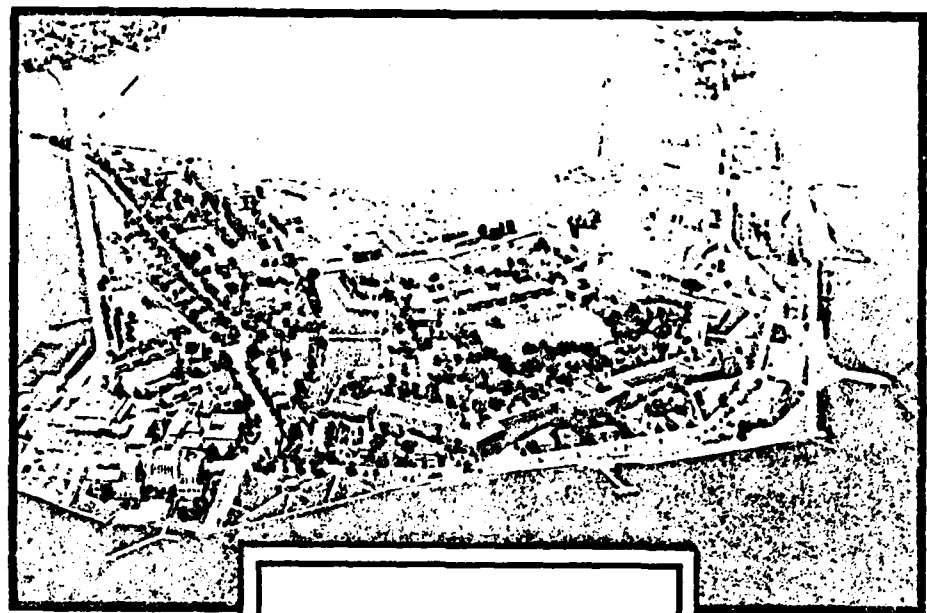
100 NO / DORICPT 80

HEADQUARTERS  
UNITED STATES ARMY TRAINING AND DOCTRINE COMMAND  
FORT MONROE, VIRGINIA 23651

ADA 117251

JUL 22 1982

DTIC



DISTRIBUTION STATEMENT A  
Approved for public release;  
Distribution Unlimited

Copy available to DTIC does not  
permit fully legible reproduction

Word Frequency Analysis  
MOS: 68D  
Skill Level 1

PREPARED BY: OPERATIONS DIV, DPFO

ATDP FORM 109-1  
Oct 80 edition may be used  
until exhausted.

COPY \_\_\_\_\_ OF \_\_\_\_\_ COPIES

82 07 20 151

## **DISCLAIMER NOTICE**

**THIS DOCUMENT IS BEST QUALITY  
PRACTICABLE. THE COPY FURNISHED  
TO DTIC CONTAINED A SIGNIFICANT  
NUMBER OF PAGES WHICH DO NOT  
REPRODUCE LEGIBLY.**

UNCLASSIFIED

SECURITY CLASSIFICATION OF THIS PAGE (When Data Entered)

REPORT DOCUMENTATION PAGE		READ INSTRUCTIONS BEFORE COMPLETING FORM
1. REPORT NUMBER <b>68D</b>	2. GOVT ACCESSION NO. <b>AD-A117251</b>	3. RECIPIENT'S CATALOG NUMBER
4. TITLE (and Subtitle) Word Frequency Analysis MOS: <b>68D</b> Skill Level <b>192</b>		5. TYPE OF REPORT & PERIOD COVERED <b>Final</b>
		6. PERFORMING ORG. REPORT NUMBER
7. AUTHOR(s)  Dr. Alexander A. Longo		8. CONTRACT OR GRANT NUMBER(s)
9. PERFORMING ORGANIZATION NAME AND ADDRESS Training Developments Institute ATTN: ATTC-DOR Fort Monroe, VA 23651		10. PROGRAM ELEMENT, PROJECT, TASK AREA & WORK UNIT NUMBERS
11. CONTROLLING OFFICE NAME AND ADDRESS Training Developments Institute ATTN: ATTC-DOR Fort Monroe, VA 23651		12. REPORT DATE <b>May 1981</b>
		13. NUMBER OF PAGES <b>30</b>
14. MONITORING AGENCY NAME & ADDRESS (if different from Controlling Office)		15. SECURITY CLASS. (of this report)  <b>Unclassified</b>
		15a. DECLASSIFICATION/DOWNGRADING SCHEDULE
16. DISTRIBUTION STATEMENT (of this Report)  Approved for Public Release; Distribution is unlimited.		
17. DISTRIBUTION STATEMENT (of the abstract entered in Block 20, if different from Report)		
18. SUPPLEMENTARY NOTES		
19. KEY WORDS (Continue on reverse side if necessary and identify by block number) MOS Vocabulary Readability Comprehension of text Curriculum Development		
20. ABSTRACT (Continue on reverse side if necessary and identify by block number) This report contains a frequency count of the basic vocabulary contained in the Army Soldier's Manual for the MOS/Skill Level designated in the title (item 4). This frequency count reflects only skill levels I/II and excludes the common tasks and those sections which are redundant/incidental to vocabulary analysis (e.g. table of contents, appendices, references, charts, etc). This vocabulary is only a sampling of the entire MOS vocabulary and is subject to change with MOS changes.		

DD FORM 1473 1 JAN 73 EDITION OF 1 NOV 65 IS OBSOLETE

UNCLASSIFIED  
SECURITY CLASSIFICATION OF THIS PAGE (When Data Entered)

### Contents and General Information

1. The Word Frequency Analysis (WFA) reports were reproduced exactly as generated via computer printout. The prime users of this document were fully cognizant of its contents and required no special instructions for interpretation. However, for the sake of other readers, the following brief description of contents is provided.

2. The WFA reports for most MOS are divided as follows:

- o Skill Level I
- o Skill Level II

However, due to the way some Soldier's Manuals are constructed, the WFA for some MOS have both Skill Levels merged into one report. Each Skill Level is subdivided into two sections.

a. Alphabetic Rank: this section lists all terms in alphabetical order (left to right). To the left of each term is the frequency which that term appears in the text submitted for word frequency count.

b. Frequency Rank: this section lists the same terms contained in the first section of the report but reranked in accordance with their frequency of appearance from highest to lowest. Also, the terms are ranked alphabetically within the same frequency level.

3. It should be noted that the basis of this WFA is the Soldier's Manual. Consequently, this vocabulary set is only a sampling of the entire MOS vocabulary and is subject to change.



Accession For	
NTIS GRA&I	<input checked="" type="checkbox"/>
DTIC TAB	<input type="checkbox"/>
Unannounced	<input type="checkbox"/>
Justification	
By	
Distribution/	
Availability Codes	
Dist	Avail and/or
	Special
A	23 04



**HEADQUARTERS**

DATA CONTROL NUMBER

JOB NO / PROJECT NO

**UNITED STATES ARMY TRAINING AND DOCTRINE COMMAND**

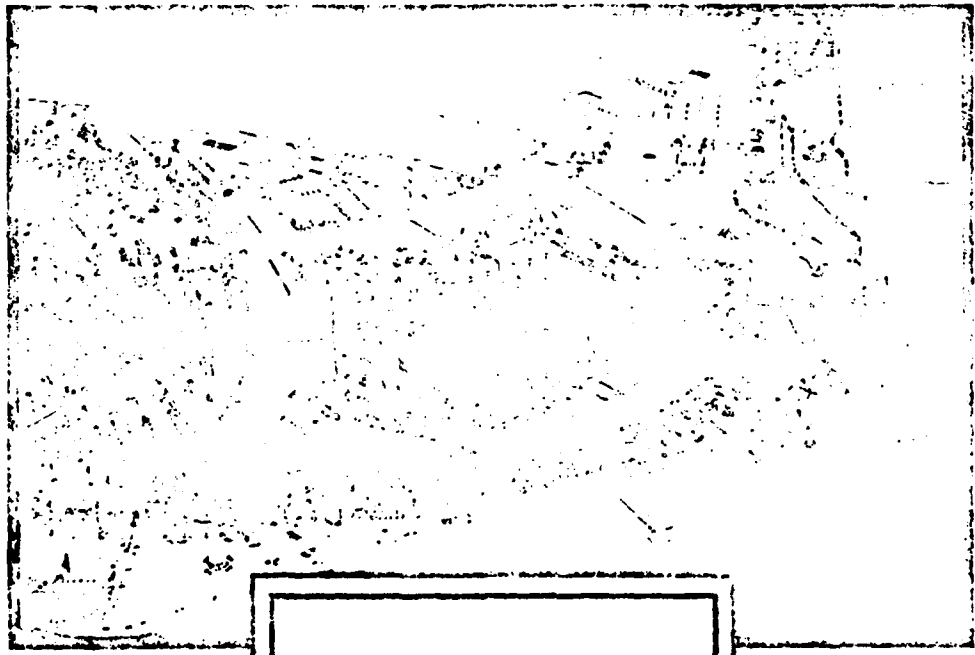
**FORT MONROE, VIRGINIA 23651**

*WFA*

OCT 31 1980

*Tsch*

*ORAD*

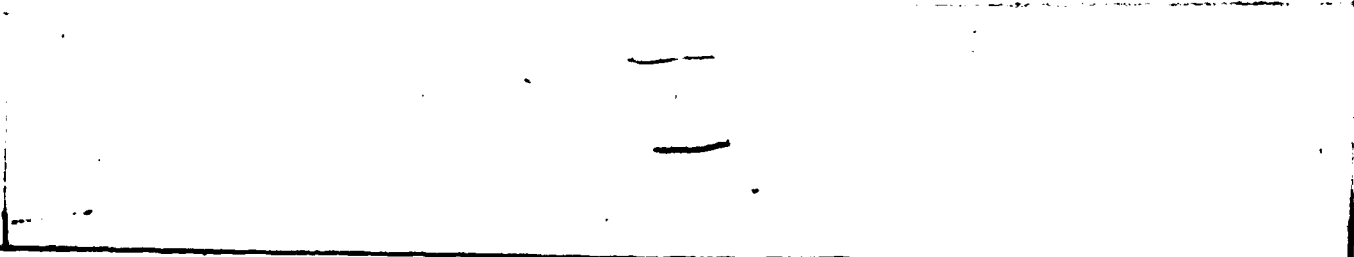


*68D-1*

PREPARED BY: OPERATIONS DIV. DPFO

COPY \_\_\_ OF \_\_\_ COPIES

ATOP FORM 109 Replaces ATOP 110, 111, 112, 113, 114, 115, 116, 117, 118, 119, 120, 121, 122, 123, 124, 125, 126, 127, 128, 129, 130, 131, 132, 133, 134, 135, 136, 137, 138, 139, 140, 141, 142, 143, 144, 145, 146, 147, 148, 149, 150, 151, 152, 153, 154, 155, 156, 157, 158, 159, 160, 161, 162, 163, 164, 165, 166, 167, 168, 169, 170, 171, 172, 173, 174, 175, 176, 177, 178, 179, 180, 181, 182, 183, 184, 185, 186, 187, 188, 189, 190, 191, 192, 193, 194, 195, 196, 197, 198, 199, 200





COUNT1 WORD1

NOG WORD LISTING/ASCENDING SEQUENCE  
COUNT2 WORD2

COUNT3 WORD3

DATE 90302 1220 PAGE 7  
COUNT4 WORD4

3 CURVED  
~~40~~  
 13 DAMPER  
 10 DD  
 1 DELAY  
 1 DEFENDING  
 1 DESCRIBING  
 1 DESIGNATES  
 6 DETAIL  
 8 DETERMINE  
 2 DIFFICULTY  
 2 DISASSEMBLY/REASSEMBLY  
 1 DISPOSITION  
 11 DRAIN  
 2 DRY  
 1 DUST  
 1 EDGES  
 2 ELECTRICAL  
 11 ENGINE  
 17 ENTERED  
 23 EQUIPMENT  
 1 EVACUATION  
 1 EXCLUDER  
~~11~~  
 1 FACILITATE  
 1 FACHMANS  
 4 FIGHT  
 1 FINE  
 2 FITTING  
 1 FLUTING  
 2 FOD  
 2 FOOT-POUND  
 2 FORMS  
 5 FREE  
 1 FRICTION  
 1 FUNCTIONAL  
 1 GEAR  
 9 GEAR  
 1 GO  
 1 GROUND  
 1 HAND  
 1 MARCEVED  
 8 HAVE  
 3 HEAT  
 17 HOLDING  
 1 HORIZONTAL  
 2 HCT  
 16 HUB  
 5 IDENTIFICO  
 1 IDENTITION

1 CUSHIONING  
 41 DA  
 4 DAMPERS  
 4 DEFECTIVE  
 1 DELIVERY  
 3 DESCRIBE  
 6 DESCRIPTION  
 6 DESIGNATION  
 1 DETAILED  
 1 DETERMINED  
 2 DIRECTIVE  
 2 DISCONNECT  
 1 DOING  
 1 DRESS  
 3 DRYCLEANING  
~~22~~  
 4 EIR  
 1 EMPLOYED  
 2 ENGINE-TO-TRANSMISSION  
 22 ENTREG  
 2 ENTER  
 1 EVIDENCE  
 1 EXHAUST  
 1 FABRICATE  
 2 FAILURE  
 4 FAULT  
 3 FILL  
 1 FIRALY  
 3 FITTINGS  
 3 FLIGHT  
 4 FOLLOWED  
 71 FOR  
 17 FORWARD  
 2 FREEDOM  
 43 FROM  
 1 FSCN71284  
 1 GALLING  
 10 GEARBOX  
 1 GRASP  
 1 GUIDANCE  
 1 HANDLES  
 15 HARROWING  
 3 HEAD  
 8 HIS  
 7 HOLE  
 1 HORN  
 1 HOUR  
 6 HYDRAULIC  
 1 IDENTIFIES

1 CUTTING  
 13 DAMAGE  
 11 CITY  
 1 DEFICIENCIES  
 1 DENYS  
 1 DESCRIBED  
 1 DESIGN  
 4 DESIGNATOR  
 2 DETACHED  
 6 DIAMETER  
 2 DISASSEMBLED/ASSEMBLED  
 3 DILLS  
 2 DINE  
 37 DRIVE  
 1 DUE/VERAGE  
 4 EACH  
 5 EITHER  
 27 END  
 1 ENDED  
 1 ENTRY  
 1 ESTABLISHED  
 4 EXCESSIVE  
 1 EXPANDING  
 10 FACE  
 1 FAN  
 1 FANOTE  
 10 FELLER  
 2 FIRST  
 1 FIVE-DIGIT  
 1 FLUSH  
 14 FOLLOWING  
 5 FORBIGN  
 1 FORWARDED  
 2 FORMLY  
 2 FRONT  
~~140~~  
 2 GUTTER  
 11 GENERATOR  
 1 GREASE  
~~6~~  
 13 HANGER  
 2 HARNESS  
 3 HEADING  
 7 HOLD  
 5 HOLES  
 2 HOSE  
 6 HOUS  
~~4~~  
 1 IDENTIFY  
 2 ILLUSTRATION

1 CYCLE  
 6 DAMAGED  
 14 DATE  
 1 DEFICIENCY  
 1 DEPENDENT  
 2 DESCRIBED  
 1 DESIGNATED  
 1 DESK  
 1 DETECTOR  
 1 DISTINTED  
 2 DISASSEMBLY  
 1 DISPOSED  
 1 DOWN  
 2 DRESS  
 12 DURING  
 1 EDGE  
 3 ELROW  
 2 ENAGED  
 100 ENDED  
 1 ENVIRONMENT  
 5 EPP  
 1 EXCHANGE  
 1 EXTREMAL  
 1 FACED  
 1 FANOTE  
 1 FANOTE  
 1 FANOTE  
 1 FANOTE  
 10 FLANGE  
 45 FM  
 1 FOLLOWD  
 42 FORM  
 2 FORMD  
 24 FREEWHEELING  
 1 FUEL  
 5 GAGE  
 1 GINET  
 2 GLASS  
 1 GROOVES  
 1 HANGERS  
 1 HANGERS  
 5 HAS  
 1 HEADS  
 5 HELDER  
 1 HOLLOW  
 3 HOPES  
 28 HOUSING  
 7 IDENTIFICATION  
 35 IF  
 1 IMMEDIATELY



MOS WORD LISTING/ASCENDING SEQUENCE  
 COUNT2 WORD2 COUNT3 WORD3

COUNT1 WORD1

1 OUTSIDE  
 2 OVALS/INA  
 2 PACKINGS  
 4 PAGES  
 1 PARTICULAR  
 4 PEN  
 7 PERFORMED  
 2 PERIOD  
 1 PEN  
 2 PITTED  
 9 PLATE  
 2 PN  
 1 PORTION  
 1 POUNDS  
 6 PERFORMED  
 5 PRESCRIBED  
 2 PREVENT  
 3 PRIORITY  
 1 PROTECT  
 1 PUBLISHED  
 2 PUSH  
 1 QUANTITY  
 2 RIP  
 1 RIBBON  
 3 RECORD  
 2 REDUCE  
 1 REFERENCES  
 4 REMOVE ALL  
 57 REMOVE  
 2 REMOVING  
 2 REMOVABLE  
 5 REPLACES  
 2 REPORTABLE  
 1 REQUEST/REPORT  
 5 REQUIRING  
 1 RETAIN  
 1 RECH  
 1 RETIRE  
 1 REV  
 2 RUST  
 4 SAMPLING  
 3 SCRATCHES  
 9 SIGHTING  
 4 SECTION  
 1 SEND  
 1 SERIAL NUMBER/LOT  
 1 SERVICEABILITY  
 26 SHEET  
 1 SHIPPED  
 1 SHIMMING

3 OVER  
~~1~~  
 1 PAD  
 1 PARAGRAPHS  
 17 PARTS  
 5 PENCIL  
 2 PERFORMING  
 1 PERTAINING  
 10 PINION  
 18 PLICE  
 1 PLIERS  
 2 PNEUMATIC  
 12 POSITION  
 15 POWERTRAIN  
 2 PREPARATION  
 1 PRESCRIBED  
 1 PREVENTIVE  
 18 PROCURES  
 1 PROVIDE  
 1 PULL  
 1 PUTTING  
 21 QUILL  
 7 REASON  
 2 RECOMMENDATION  
 1 RECORDED  
 35 REFORM  
 1 REFINISH  
 1 REINSTALLATION  
 12 REMOVE/INSTALL  
 9 REPAIR  
 1 REPAIRED  
 1 REPLACEMENT  
 1 REPRESENTATIVE'S  
 1 REQUIRE  
 3 REQUISITION  
 6 RETAINED  
 3 RING  
 15 RULOR  
 3 RUBBER  
~~1~~  
 1 SATURATION  
 1 SCREWDRIVER  
 1 SCALE  
 5 SECURE  
 1 SEPARATING  
 3 SERIES  
 4 SERVICEABLE  
 2 SHIPS  
 1 SHEET  
 1 SHIPMENT

8 OVERHAUL  
 1 PACKI  
 1 PADS  
 1 PACKING  
 1 PATTERN  
 1 PENCILS  
 1 PERIOD  
 1 PERTINENT  
 4 PING  
 3 PLACED  
 18 PLUS  
 1 POLICE  
 2 POSITIONED  
 1 PRECISION  
 13 PREPARE  
 8 PREP  
 1 PREVIOUSLY  
 8 PROPER  
 12 PROVIDED  
 2 PULLER  
 1 PULLEY  
 1 PUS  
 2 REASSEMBLY  
 1 RECOMMENDATIONS  
 1 RECORDS  
 14 REFERENCE  
 1 REGISTER  
 6 REMOVED  
 5 REMOVE  
 1 REPAIR/OVERHAUL  
 2 REPAIRS  
 1 REPLISHED  
 1 REPRODUCTION  
 14 REQUIRED  
 1 RE-sample  
 14 RETAINING  
 1 RIG  
 1 ROUGH  
 3 RUNUP  
 5 SAMPLE  
 1 SCALE  
 22 SEAL  
 1 SEATS  
 5 SECURING  
 2 SEQUENCED  
 1 SEPARATIONS  
 3 SERVICED  
 1 SHALL  
 1 SHELF  
 1 SHIPPING

2 OVERHAULS  
 24 PACKING  
 10 PAGES  
 10 PART  
 2 PC-580  
 11 PERFORM  
 2 PERMISSIBLE  
 1 PILE  
 2 PITCH  
 4 PLASTIC  
 11 PLUGS  
 1 POLISHING  
 1 POSITIONE  
 1 PREPARE  
 1 PREPARED  
 4 PREPARE  
 4 PREP  
 2 PREPARE  
 4 PULLEY  
 19 PUMP  
 1 CO-2-16  
 1 PULL  
 1 PUS  
 1 REASSEMBLY  
 1 RECOMMENDED  
 5 REF  
 15 REFERENCES  
 1 REPRODUCTION  
 26 REMOVE  
 1 REMOVE/INSTALL  
 1 REPAIR/REPLACE  
 21 REPAIRS  
 2 REPAIR  
 7 RECORDS  
 1 REQUIRES  
 1 REPAIR/REPLACE  
 1 REPAIR  
 2 REPAIRING  
 1 REPAIRS  
 1 SAMPLES  
 1 SCRAPER  
 5 SCALANT  
 1 SECOND  
 10 SEE  
 15 SERIAL  
 2 SERVICE  
 2 SETSCREENS  
 2 SHIP  
 2 SHIP  
 2 SHORT

COUNT1 WORD1	MOS WORD LISTING/ASCENDING SEQUENCE	COUNT4 WORD4
COUNT2 WORD2	COUNT3 WORD3	COUNT4 WORD4
1 SHORTCIRCUITING	3 SHOULD	4 STEE
9 SIGHT	13 SIGNATURE	2 STEELCASE
14 SIGHT	3 SIX	3 SLEEVE
2 SMALL	1 SBR	1 SLO
3 SOLVENT	1 SOUND	2 SLOTTED
6 SPECIAL	1 SPECIFIC	11 SPECIFIED
1 SPALINE	6 SPLINED	1 SPOKE
13 SPRING	2 SPRINGS	4 STAMP
5 SPUNNING	1 STAND	31 STANDARDS
11 STAYERS	1 STEEL	32 STOPS
12 STOCK	2 STONE	1 STORAGE
1 STRUCTURE	1 STUDS	1 SUBMITTED
1 SUBMITTER	2 SUBMITTING	4 SUBSTITUTES
4 SUMP	1 SUPERVISOR	1 SUPPLY
7 SUPPORT	1 SURFACE	1 SURROUNDING
1 SUSPENDED	1 SUSPENSION	8 SYMBOL
1 SYMBOLS	2 SYMPTOMS	2 TABLE
7 TELETYPE	1 TAG	1 TABLET
4 TANK	17 TAIL	5 TAPER
16 TANK	2 TAP	3 TAPERED
1 TANKWAYS	26 TB	1 TBC
16 TECHNICAL	5 TSETH	1 TELEPHONE
4 TEST	21 THAT	404 THE
1 TESTER	2 THEY	1 THEY
1 THREED	2 THREE	2 THREE
1 THROUGH	1 THIRTEEN	18 TIME
1 TITLED	112 TM	136 TO
22 TOOL	14 TOOLKIT	27 TOOLS
17 TOOLUP	1 TORQUING	4 TOTAL
1 TRANSFER	32 TRANSMISSION	2 TRANSMITTER
2 TUBULE	2 TUBE	2 TUBES
1 TWISTING	5 TWO	2 TWX
6 TYPEWRITER	13 UNOLSSD	9 UNLOD/H
1 UNCOVERED	1 UNCOVERED	1 UNINSTALLED
1 UNITS	1 UNIVERSAL	5 UNK
7 UNREVERSEABLE	1 UNTIL	1 UNUSED
1 UP	1 UPON	2 UPPER
4 USAGE	5 USE	6 USED
5 USING	1 UTENSILS	2 UTILIZATION
1 VARY	1 VERIFIED	1 VERIFY
1 VISE	1 VISUALLY	6 WAS
4 WASPERS	2 WEAR	1 WHAT
6 WHICH	2 WHILE	11 WILL
7 WITHIN	4 WITHOUT	8 WORK
2 WORKSHEET	1 WRAP	12 WRENCH
1 WRITE UP	7 WRITING	2 YOUR
	1 YOU	
		6 TYPE
		2 STEELCASE
		3 SLEEVE
		1 SLO
		2 SLOTTED
		11 SPECIFIED
		1 SPOKE
		4 STAMP
		31 STANDARDS
		32 STOPS
		1 STORAGE
		1 SUBMITTED
		4 SUBSTITUTES
		1 SUPPLY
		1 SURROUNDING
		8 SYMBOL
		2 TABLE
		1 TABLET
		5 TAPER
		3 TAPERED
		1 TBC
		1 TELEPHONE
		404 THE
		1 THEY
		2 THREE
		18 TIME
		136 TO
		27 TOOLS
		4 TOTAL
		2 TRANSMITTER
		2 TUBES
		2 TWX
		9 UNLOD/H
		1 UNINSTALLED
		5 UNK
		1 UNUSED
		2 UPPER
		6 USED
		2 UTILIZATION
		1 VERIFY
		6 WAS
		1 WHAT
		11 WILL
		8 WORK
		12 WRENCH
		2 YOUR
		6 TYPE
		2 STEELCASE
		3 SLEEVE
		1 SLO
		2 SLOTTED
		11 SPECIFIED
		1 SPOKE
		4 STAMP
		31 STANDARDS
		32 STOPS
		1 STORAGE
		1 SUBMITTED
		4 SUBSTITUTES
		1 SUPPLY
		1 SURROUNDING
		8 SYMBOL
		2 TABLE
		1 TABLET
		5 TAPER
		3 TAPERED
		1 TBC
		1 TELEPHONE
		404 THE
		1 THEY
		2 THREE
		18 TIME
		136 TO
		27 TOOLS
		4 TOTAL
		2 TRANSMITTER
		2 TUBES
		2 TWX
		9 UNLOD/H
		1 UNINSTALLED
		5 UNK
		1 UNUSED
		2 UPPER
		6 USED
		2 UTILIZATION
		1 VERIFY
		6 WAS
		1 WHAT
		11 WILL
		8 WORK
		12 WRENCH
		2 YOUR
		6 TYPE
		2 STEELCASE
		3 SLEEVE
		1 SLO
		2 SLOTTED
		11 SPECIFIED
		1 SPOKE
		4 STAMP
		31 STANDARDS
		32 STOPS
		1 STORAGE
		1 SUBMITTED
		4 SUBSTITUTES
		1 SUPPLY
		1 SURROUNDING
		8 SYMBOL
		2 TABLE
		1 TABLET
		5 TAPER
		3 TAPERED
		1 TBC
		1 TELEPHONE
		404 THE
		1 THEY
		2 THREE
		18 TIME
		136 TO
		27 TOOLS
		4 TOTAL
		2 TRANSMITTER
		2 TUBES
		2 TWX
		9 UNLOD/H
		1 UNINSTALLED
		5 UNK
		1 UNUSED
		2 UPPER
		6 USED
		2 UTILIZATION
		1 VERIFY
		6 WAS
		1 WHAT
		11 WILL
		8 WORK
		12 WRENCH
		2 YOUR
		6 TYPE
		2 STEELCASE
		3 SLEEVE
		1 SLO
		2 SLOTTED
		11 SPECIFIED
		1 SPOKE
		4 STAMP
		31 STANDARDS
		32 STOPS
		1 STORAGE
		1 SUBMITTED
		4 SUBSTITUTES
		1 SUPPLY
		1 SURROUNDING
		8 SYMBOL
		2 TABLE
		1 TABLET
		5 TAPER
		3 TAPERED
		1 TBC
		1 TELEPHONE
		404 THE
		1 THEY
		2 THREE
		18 TIME
		136 TO
		27 TOOLS
		4 TOTAL
		2 TRANSMITTER
		2 TUBES
		2 TWX
		9 UNLOD/H
		1 UNINSTALLED
		5 UNK
		1 UNUSED
		2 UPPER
		6 USED
		2 UTILIZATION
		1 VERIFY
		6 WAS
		1 WHAT
		11 WILL
		8 WORK
		12 WRENCH
		2 YOUR
		6 TYPE
		2 STEELCASE
		3 SLEEVE
		1 SLO
		2 SLOTTED
		11 SPECIFIED
		1 SPOKE
		4 STAMP
		31 STANDARDS
		32 STOPS
		1 STORAGE
		1 SUBMITTED
		4 SUBSTITUTES
		1 SUPPLY
		1 SURROUNDING
		8 SYMBOL
		2 TABLE
		1 TABLET
		5 TAPER
		3 TAPERED
		1 TBC
		1 TELEPHONE
		404 THE
		1 THEY
		2 THREE
		18 TIME
		136 TO
		27 TOOLS
		4 TOTAL
		2 TRANSMITTER
		2 TUBES
		2 TWX
		9 UNLOD/H
		1 UNINSTALLED
		5 UNK
		1 UNUSED
		2 UPPER
		6 USED
		2 UTILIZATION
		1 VERIFY
		6 WAS
		1 WHAT
		11 WILL
		8 WORK
		12 WRENCH
		2 YOUR
		6 TYPE
		2 STEELCASE
		3 SLEEVE
		1 SLO
		2 SLOTTED
		11 SPECIFIED
		1 SPOKE
		4 STAMP
		31 STANDARDS
		32 STOPS
		1 STORAGE
		1 SUBMITTED
		4 SUBSTITUTES
		1 SUPPLY
		1 SURROUNDING
		8 SYMBOL
		2 TABLE
		1 TABLET
		5 TAPER
		3 TAPERED
		1 TBC
		1 TELEPHONE
		404 THE
		1 THEY
		2 THREE
		18 TIME
		136 TO
		27 TOOLS
		4 TOTAL
		2 TRANSMITTER
		2 TUBES
		2 TWX
		9 UNLOD/H
		1 UNINSTALLED
		5 UNK
		1 UNUSED
		2 UPPER
		6 USED
		2 UTILIZATION
		1 VERIFY
		6 WAS
		1 WHAT
		11 WILL
		8 WORK
		12 WRENCH
		2 YOUR
		6 TYPE
		2 STEELCASE
		3 SLEEVE
		1 SLO
		2 SLOTTED
		11 SPECIFIED
		1 SPOKE
		4 STAMP
		31 STANDARDS
		32 STOPS
		1 STORAGE
		1 SUBMITTED
		4 SUBSTITUTES
		1 SUPPLY
		1 SURROUNDING
		8 SYMBOL
		2 TABLE
		1 TABLET
		5 TAPER
		3 TAPERED
		1 TBC
		1 TELEPHONE
		404 THE
		1 THEY
		2 THREE
		18 TIME
		136 TO
		27 TOOLS
		4 TOTAL
		2 TRANSMITTER
		2 TUBES
		2 TWX
		9 UNLOD/H
		1 UNINSTALLED
		5 UNK
		1 UNUSED
		2 UPPER
		6 USED
		2 UTILIZATION
		1 VERIFY
		6 WAS
		1 WHAT
		11 WILL
		8 WORK
		12 WRENCH
		2 YOUR
		6 TYPE
		2 STEELCASE
		3 SLEEVE
		1 SLO
		2 SLOTTED
		11 SPECIFIED
		1 SPOKE
		4 STAMP
		31 STANDARDS
		32 STOPS
		1 STORAGE
		1 SUBMITTED
		4 SUBSTITUTES
		1 SUPPLY
		1 SURROUNDING
		8 SYMBOL
		2 TABLE
		1 TABLET
		5 TAPER
		3 TAPERED
		1 TBC
		1 TELEPHONE
		404 THE
		1 THEY
		2 THREE
		18 TIME
		136 TO
		27 TOOLS
		4 TOTAL
		2 TRANSMITTER
		2 TUBES
		2 TWX
		9 UNLOD/H
		1 UNINSTALLED
		5 UNK
		1 UNUSED
		2 UPPER
		6 USED
		2 UTILIZATION
		1 VERIFY
		6 WAS
		1 WHAT
		11 WILL
		8 WORK
		12 WRENCH
		2 YOUR
		6 TYPE
		2 STEELCASE
		3 SLEEVE
		1 SLO
		2 SLOTTED
		11 SPECIFIED
		1 SPOKE
		4 STAMP
		31 STANDARDS
		32 STOPS
		1 STORAGE
		1 SUBMITTED
		4 SUBSTITUTES
		1 SUPPLY
		1 SURROUNDING
		8 SYMBOL
		2 TABLE
		1 TABLET
		5 TAPER
		3 TAPERED
		1 TBC
		1 TELEPHONE
		404 THE
		1 THEY
		2 THREE
		18 TIME
		136 TO
		27 TOOLS
		4 TOTAL
		2 TRANSMITTER
		2 TUBES
		2 TWX
		9 UNLOD/H
		1 UNINSTALLED
		5 UNK
		1 UNUSED
		2 UPPER
		6 USED
	</	

WORDS WORD LISTING/DESCENDING FREQUENCY  
 COUNT1 WORD1 COUNT2 WORD2 COUNT3 WORD3

COUNT4 WORD4

197 THE  
 187 BLOCK  
 186 TRACK  
 63 CONDITIONS  
 57 WITH  
 49 FROM  
 37 IS  
 36 ACCOMPLISHING  
 35 APPROPRIATE  
 32 STANDARDIZED  
 31 NECESSARY  
 27 DRIVE  
 26 REMOVAL  
 24 CONDITION  
 22 ENTRIES  
 21 EQUIPMENT  
 21 CONSUMER  
 19 OBTAINED  
 17 PLUG  
 17 BY  
 17 HOLDING  
 17 THROUGH  
 16 PLUG  
 15 FORWARD  
 15 REFILL  
 14 FOLLOWING  
 14 REFERENCE  
 14 BULKY  
 13 NUMBER  
 13 SIGNATURE  
 12 CHECK  
 12 NATIONAL  
 12 REMOVE/INSTALL  
 12 WRENCH  
 11 DRIVE  
 11 INSULATOR  
 11 STATUS  
 10 FACE  
 10 INSPECTION  
 10 PINION  
 9 GEAR  
 9 REPAIR  
 9 UNLOAD  
 9 CHANGE  
 9 DETROIT  
 9 LEGIBLE  
 8 PRESS

272 IN  
 136 NO  
 99 OR  
 72 NUMBER  
 62 FROM  
 56 CHAPTER  
 42 ARE  
 39 REFER  
 35 APPLICABLE  
 35 AS  
 32 STEPS  
 31 NOT  
 28 HOUSING  
 26 TB  
 24 FREEWHEELING  
 22 ASSEMBLY  
 22 SEAL  
 21 SCREW  
 20 INSTALLATION  
 19 PUMP  
 18 ENTERED  
 18 PROCEDURES  
 17 OUTER  
 16 CASE  
 16 REFERENCES  
 15 MAINTENANCE  
 14 BEARING  
 14 REQUIRED  
 13 OR  
 13 HANGER  
 13 SPRING  
 12 DURING  
 12 ON-SITE  
 12 STOCK  
 11 AFTER  
 11 DRAIN  
 11 PERFORM  
 11 MILL  
 10 FILLER  
 10 INSTALLED  
 10 SET  
 9 SKELING  
 8 APPLY  
 8 CLEAN  
 8 MEMBER  
 8 PAPER

250 AND  
 112 TV  
 98 MUST  
 71 FOR  
 61 CIL  
 53 INSTALL  
 41 OR  
 37 DRIVE  
 36 COMPLETE  
 35 IF  
 32 TRANSMISSION  
 31 STANDARDS  
 27 TOOLS  
 25 END  
 24 PICKING  
 22 CODE  
 22 TOOL  
 21 REPLACE  
 20 NUT  
 18 INNER  
 18 TIME  
 17 COMPONENT  
 17 PART  
 16 TANK  
 15 POWERTRAIN  
 14 BELCH  
 14 INFO  
 14 RETAINING  
 13 BLOCKS  
 13 MECHANICS  
 13 TOILESS  
 12 MANUALS  
 12 POSITION  
 12 THROUGH  
 11 BETWEEN  
 11 ENGINE  
 11 PLUGS  
 10 COMPLETED  
 10 FLANGE  
 10 FACE  
 9 CERTIFYING  
 9 ORGANIZATION  
 9 SIGHT  
 8 BOLT  
 8 COLUMN  
 8 HAVE  
 8 NO  
 8 QUANTITY

173 OF  
 108 ENTER  
 90 TO  
 66 REMOVE  
 57 ON  
 45 FM  
 40 ALL  
 37 MANUAL  
 35 PROGRAM  
 35 THIS  
 32 LAST  
 29 ITEM  
 25 INPUT  
 25 AREA  
 23 IN  
 21 COLLING  
 21 PART  
 17 ACTIVITY  
 16 ACCORDANCE  
 15 LISTED  
 17 FORWARD  
 17 TAIL  
 16 FLU  
 16 MECHANICAL  
 15 OCTOP  
 14 DATE  
 14 ITEMS  
 14 STAGE  
 13 DAMAGE  
 13 PREPARE  
 12 AIR  
 12 MATERIALS  
 12 PROVIDED  
 12 WASHER  
 11 COMPONENTS  
 11 GENERAL  
 11 IDENTIFIED  
 10 CO  
 10 CENTER  
 10 PART  
 9 COMPOUND  
 9 PLATE  
 9 SPACE  
 9 CAP  
 8 DESIGNATION  
 8 RIF  
 8 OVERHAUL  
 8 FINE

NDS WORD LISTING/DESCENDING FREQUENCY  
COUNT 3 WORD 3

DATE 03302 1224 P.05

2

COUNT1 WORD1

COUNT2 WORD2

COUNT4 WORD4

9 SYMBOL  
7 IDENTIFYING  
7 IDENTIFICATION  
7 LIVING  
7 PERFORMED  
7 TECHNICAL  
6 ACCIDENT  
6 ACCIDENTS  
6 COLLISION  
6 DETAIL  
6 INCIDENT  
6 INSTRUMENT  
6 PERFORMED  
6 STITCHED  
6 TYPE  
6 WORK  
6 WRITING  
5 ETC  
5 HAS  
5 INSPECT  
5 LABELS  
5 MARK  
5 NAME  
5 PRESCRIBED  
5 REQUIRING  
5 SECURING  
5 TIGHT  
5 USING  
4 CONTINUED  
4 DESIGNATOR  
4 FULL  
4 INDICATORS  
4 LAST  
4 LOCSE  
4 PAGES  
4 PLASTIC  
4 REINSTALL  
4 SKILL  
4 SWITCH  
4 USE  
3 BEEN  
3 CENTERING  
3 CONTAINER  
3 CURVE  
3 FLOW  
3 HANG  
3 INDICATE  
3 LOWER  
3 MOVEMENT  
3 POINT  
3 POINTS

8 TEST  
7 AREA  
7 INCH-POUND  
7 MECHANICAL  
7 REASON  
7 UNSERVICEABLE  
6 AT  
6 COVER  
6 DIAMETER  
6 LOCATION  
6 REMARKS  
6 SPECIAL  
6 TYPEWRITER  
6 WHICH  
5 FLAG  
5 FURROW  
5 HOLDER  
5 INSULE  
5 LEFT  
5 MAKE  
5 NOUN  
5 RED  
5 SAMPLE  
5 STAMPED  
5 TAG  
4 ANY  
4 CORRECTIVE  
4 EACH  
4 FIGURE  
4 INITIALS  
4 LOAD  
4 MODIFICATION  
4 PEN  
4 PRESSURE  
4 SAMPLING  
4 STAMP  
4 TAGS  
4 WASHERS  
3 BINDING  
3 CHANGES  
3 CORRECT  
3 DESCRIBE  
3 FILL  
3 HEADING  
3 INFORMATION  
3 LAMP  
3 MAST  
3 NICKS  
3 OVER  
3 POUNDS

5 WORK  
7 HOLD  
7 INSTRUCTIONS  
7 PWC  
7 REQUEST  
7 WITHIN  
6 AUTHORITY  
6 COME  
6 HOUR  
6 MANUFACTURER'S  
6 RETAINER  
6 SPLICED  
6 USED  
5 ACCEPTABLE  
5 COMPONENT'S  
5 FREE  
5 HOLES  
5 ISSUE  
5 LEVEL  
5 MATERIAL  
5 OBTAINABLE  
5 REMOVED  
5 SEALANT  
5 TAG/LABEL-MATERIAL  
5 UAK  
4 APPROXIMATE  
4 DAMPER  
4 DOT  
4 FOLLOWED  
4 INSERT  
4 LOCKING  
4 NUMBER/LOT  
4 PIN  
4 POINT  
4 SERVICEABLE  
4 SUITABLE  
4 TOTAL  
4 WITHOUT  
3 BORE  
3 CLAMP  
3 COUPLINGS  
3 COGS  
3 FITTINGS  
3 HENT  
3 IT  
3 LINE  
3 MIL-S-8802  
3 OBJECTS  
3 PACKINGS  
3 PRIORITY

7 ACTION  
7 FILE  
7 MARK  
7 NAME  
7 SUBJECT  
7 WRITING  
6 BLANK  
6 DESCRIPTION  
6 HYDRAULIC  
6 NOMENCLATURE  
6 SECTION  
6 SOLUTE  
6 TYPE  
5 IDENTIFIED  
5 FILTER  
5 GAGE  
5 IDENTIFIED  
5 JULIAN  
5 LUBRICATE  
5 MODEL  
5 PARTIAL  
5 REPLACED  
5 SECURE  
5 TAKEN  
5 USE  
4 BRIDGE  
4 OPERATIVE  
4 EXCESSIVE  
4 INCH  
4 INSPECTOR'S  
4 LOCKWIRE  
4 OPERATOR  
4 RING  
4 APPLICATION  
4 STOP  
4 TUBE  
3 IMPROVED  
3 BOTTLE  
3 COMMON  
3 CRACKED  
3 CYCLE/TIME  
3 FILTER  
3 HOLE  
3 ITEMS  
3 LISTING  
3 POSITION  
3 DESIGNED  
3 SERVICEABLE  
3 REPORT



COUNT4 WORD4

WORD LISTING/DESCENDING FREQUENCY

COUNT1 WORD1

COUNT2 WORD2

COUNT3 WORD3

1 ANOTHER  
 1 AROUND  
 1 AUXILIARY  
 1 BACKLASH  
 1 BLICK  
 1 BLENDING  
 1 BLEND  
 1 CALIBRATE  
 1 CARBURETOR  
 1 CH-4747C  
 1 CIRCUMSTANCES  
 1 CLAMP  
 1 CLAMPING  
 1 COMPLETE  
 1 CONDEMNED  
 1 CONTAINS  
 1 CLARIFICATION  
 1 CRUSHED  
 1 CUTTING  
 1 DELAY  
 1 ORDERING  
 1 DISCONNECTED  
 1 DETECTOR  
 1 DISPOSITION  
 1 DUFF/COVERAGE  
 1 EMPLOYED  
 1 ESTABLISHED  
 1 EXCLUDED  
 1 EXHAUSTIVE  
 1 FILTERED  
 1 FIVE-DIGIT  
 1 FLOW-THROTTLED  
 1 FSCN71934  
 1 GO  
 1 GROUND  
 1 HINDLES  
 1 HOLLOW  
 1 IDENTIFIES  
 1 IMMEDIATELY  
 1 INCLUDE  
 1 INSPECTED  
 1 L  
 1 LEAK  
 1 LIFE  
 1 LOSS  
 1 MACHINING  
 1 MAY  
 1 M-1084H  
 1 MIL-L-23699

1 APPEARS  
 1 ASSEMBLED  
 1 BAND  
 1 BELONGS  
 1 BLADE  
 1 BOLLIS  
 1 BUILT  
 1 CALIBRATED  
 1 CAUSED  
 1 CHECKLIST  
 1 CLEANED  
 1 CLOTH  
 1 COMPLETENESS  
 1 COMPRESSED  
 1 CONTACT  
 1 CONTINUATION  
 1 CORDDED  
 1 CLURKENT  
 1 CYCLE  
 1 DELIVERY  
 1 DESCRIBED  
 1 DESIGNATES  
 1 DETERMINED  
 1 GOING  
 1 DUST  
 1 ENGINES  
 1 EVACUATION  
 1 EXHAUST  
 1 FACES  
 1 FASTENING  
 1 FINE  
 1 FLARING  
 1 FRICTION  
 1 GAIN  
 1 GRASP  
 1 GUIDANCE  
 1 HANGERS  
 1 HORIZONTAL  
 1 IDENTIFY  
 1 IMPROPER  
 1 INCLUDING  
 1 INSPECTED  
 1 INTERNAL  
 1 LEAVE  
 1 LOCAL  
 1 LOSSES  
 1 MAINTAINED  
 1 MARGIN  
 1 M Y  
 1 MIL-L-6022

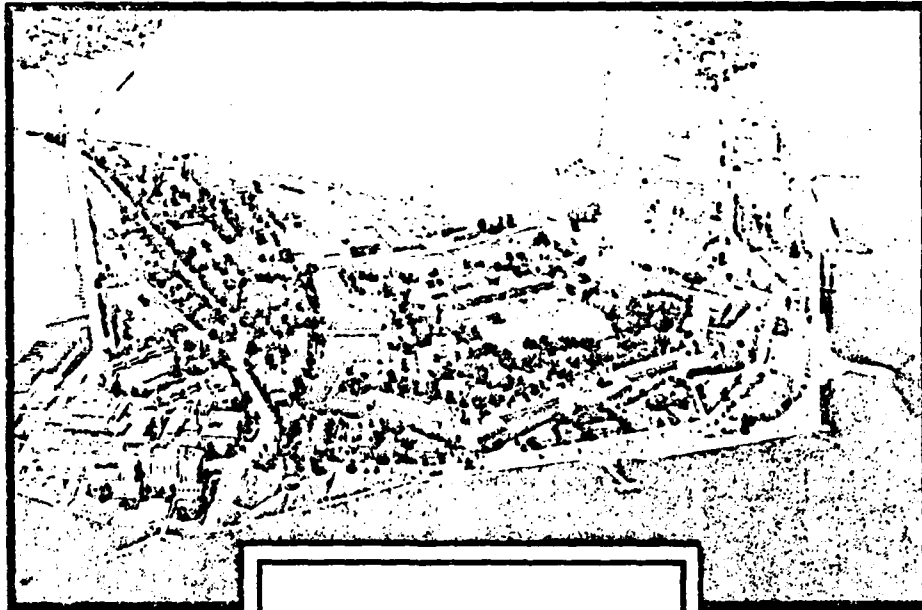
1 APPENDIX  
 1 ASSIST  
 1 BATTERY  
 1 BELTS  
 1 BLEND  
 1 BOLT  
 1 BUILT  
 1 CAM  
 1 CENTER  
 1 CHIP  
 1 CLEARANCE  
 1 CLUTCH  
 1 COMPLETING  
 1 COMPENSIC  
 1 CONDITIONS  
 1 COOLANT  
 1 COVERED  
 1 CURVE  
 1 DEFICIENCIES  
 1 DENTS  
 1 DESCRIBING  
 1 DETK  
 1 DETACHED  
 1 DOWN  
 1 EDGE  
 1 ENEMY  
 1 EVIDENCE  
 1 EXPANDING  
 1 FACILITATE  
 1 FAILS  
 1 FIGHTLY  
 1 FLUSH  
 1 FULL  
 1 COLLING  
 1 CRUISE  
 1 HAMMERS  
 1 HARDENED  
 1 HORN  
 1 IGNITION  
 1 INCH-POUNDS  
 1 INITIATING  
 1 INTERNAL  
 1 LEAD  
 1 LEGALLY  
 1 LOCATE  
 1 LUBRICATING  
 1 MALFUNCTION  
 1 MARKED  
 1 MEMBERS  
 1 M Y  
 1 MIL-S-2602D

1 APPLYING  
 1 ALTOVON/COMMERCIAL  
 1 BEARING  
 1 BEYOND  
 1 BLEND  
 1 BRACKET  
 1 CANTINUM  
 1 CASE  
 1 CENTRIFUGAL  
 1 CYCLED  
 1 CLEARLY  
 1 CLAM  
 1 COVOLUTION  
 1 COMMUNICATION  
 1 CONTINUED  
 1 COOLER  
 1 COVERS  
 1 CUSTOMING  
 1 EFFICIENCY  
 1 ESTABLISH  
 1 DETON  
 1 DETACHED  
 1 DISPOSED  
 1 DRESS  
 1 EGGS  
 1 ENVIRONMENT  
 1 EXHAUST  
 1 EXTENSION  
 1 FAX  
 1 FAYING  
 1 FIT  
 1 FOLLOWS  
 1 FUNCTIONAL  
 1 GASKET  
 1 GROOVES  
 1 HAD  
 1 HARDS  
 1 HOUR  
 1 ILL  
 1 INCHES  
 1 JAK  
 1 INTERVAL  
 1 LEAK-SEPS  
 1 LEVELS  
 1 LOCATED  
 1 LUBRICATION  
 1 MANUFACTURER  
 1 MARKING  
 1 RETURN  
 1 RYANUM



**HEADQUARTERS**  
**UNITED STATES ARMY TRAINING AND DOCTRINE COMMAND**  
**FORT MONROE, VIRGINIA 23651**

DATA CONTROL NUMBER             
JOB NO / PROJECT NO



Word Frequency Analysis

MOS: 68D

Skill Level 2

PREPARED BY: OPERATIONS DIV, DPFO

ATDP <sup>FORM</sup> Oct 80 109-1 Feb 80 edition may be used until exhausted.

COPY        OF        COPIES



HEADQUARTERS

DATA CONTROL NUMBER 1.  
103 83 / 22222

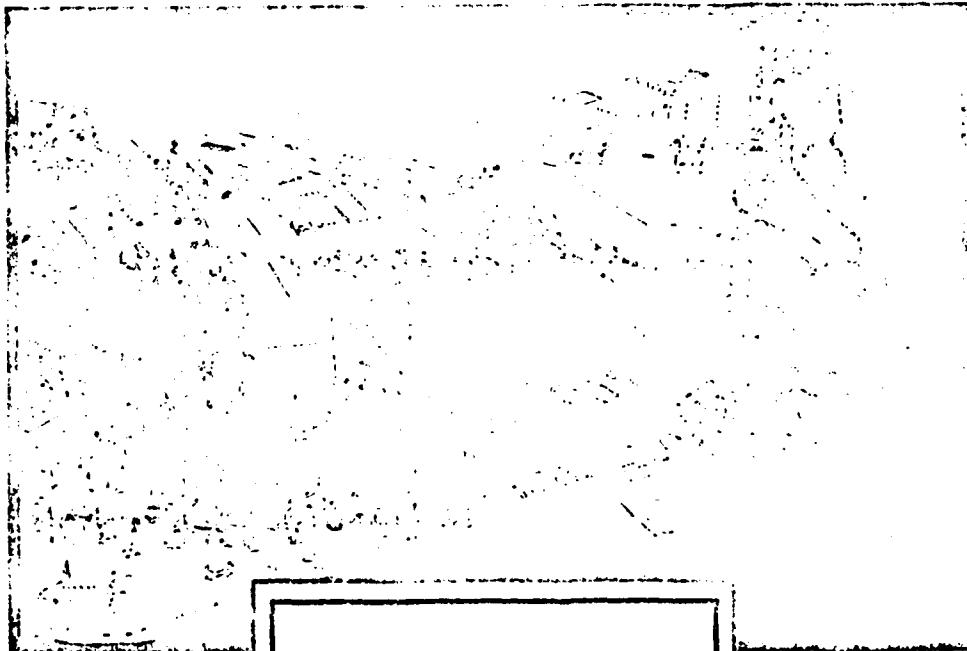
UNITED STATES ARMY TRAINING AND DOCTRINE COMMAND

FORT MONROE, VIRGINIA 23651

WEA

OCT 31 1980

+ sch  
ORAD

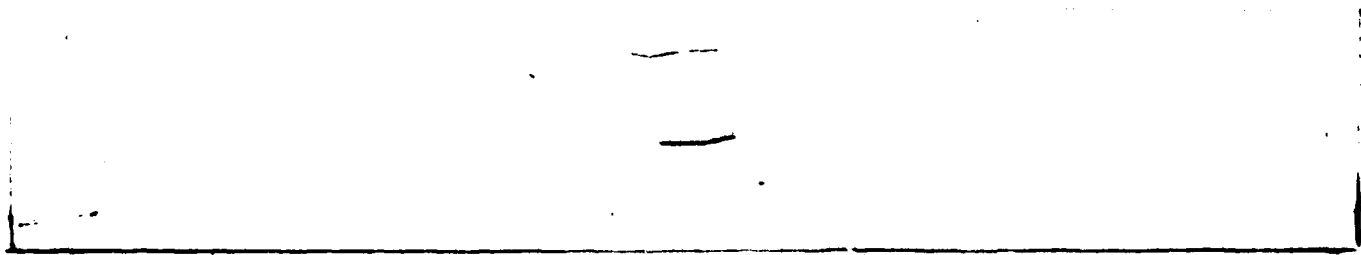


68D-2

PREPARED BY: OPERATIONS DIV. DPFO

ATOP FORM 109 20-40000 ATDS 118, Jul 73, which is obsolete

COPY \_\_\_\_ OF \_\_\_\_ COPIES



COUNT1 WORD1	COUNT2 WORD2	NOS WORD LISTING/ASCENDING SEQUENCE COUNT3 WORD3	COUNT4 WORD4
10 A	2 AA	1 ABOUT	2 AA
11 A	2 ABRASIVE	1 AC	13 ABOVE
12 A	3 ACCESSORIES	2 ACCESSORY	1 ACCELERATED
13 A	1 ACCIDENTAL	5 ACCOMPLISHED	1 ACCIDENTAL
14 A	1 ACCURATE	3 ACTIONS	59 ACCUMULATING
15 A	1 ACCURACY	1 ACTIVITIES	2 ACRYLIC
16 A	1 ACTIVE	3 ADJUST	1 ACTIVITY
17 A	1 ADD	7 ADHESIVE	1 ADJUSTION
18 A	3 ADEQUATE	6 ADJUSTING	5 ADJACENT
19 A	4 ADJUSTED	1 ADJUSTING	5 ADJUSTMENT
20 A	1 ADJUSTING	1 ADJUSTMENT	1 ADJUSTMENT
21 A	1 ADJUSTMENT	1 ADJUSTMENT	1 ADJUSTMENT
22 A	1 ADJUSTMENT	1 ADJUSTMENT	1 ADJUSTMENT
23 A	1 ADJUSTMENT	1 ADJUSTMENT	1 ADJUSTMENT
24 A	1 ADJUSTMENT	1 ADJUSTMENT	1 ADJUSTMENT
25 A	1 ADJUSTMENT	1 ADJUSTMENT	1 ADJUSTMENT
26 A	1 ADJUSTMENT	1 ADJUSTMENT	1 ADJUSTMENT
27 A	1 ADJUSTMENT	1 ADJUSTMENT	1 ADJUSTMENT
28 A	1 ADJUSTMENT	1 ADJUSTMENT	1 ADJUSTMENT
29 A	1 ADJUSTMENT	1 ADJUSTMENT	1 ADJUSTMENT
30 A	1 ADJUSTMENT	1 ADJUSTMENT	1 ADJUSTMENT
31 A	1 ADJUSTMENT	1 ADJUSTMENT	1 ADJUSTMENT
32 A	1 ADJUSTMENT	1 ADJUSTMENT	1 ADJUSTMENT
33 A	1 ADJUSTMENT	1 ADJUSTMENT	1 ADJUSTMENT
34 A	1 ADJUSTMENT	1 ADJUSTMENT	1 ADJUSTMENT
35 A	1 ADJUSTMENT	1 ADJUSTMENT	1 ADJUSTMENT
36 A	1 ADJUSTMENT	1 ADJUSTMENT	1 ADJUSTMENT
37 A	1 ADJUSTMENT	1 ADJUSTMENT	1 ADJUSTMENT
38 A	1 ADJUSTMENT	1 ADJUSTMENT	1 ADJUSTMENT
39 A	1 ADJUSTMENT	1 ADJUSTMENT	1 ADJUSTMENT
40 A	1 ADJUSTMENT	1 ADJUSTMENT	1 ADJUSTMENT
41 A	1 ADJUSTMENT	1 ADJUSTMENT	1 ADJUSTMENT
42 A	1 ADJUSTMENT	1 ADJUSTMENT	1 ADJUSTMENT
43 A	1 ADJUSTMENT	1 ADJUSTMENT	1 ADJUSTMENT
44 A	1 ADJUSTMENT	1 ADJUSTMENT	1 ADJUSTMENT
45 A	1 ADJUSTMENT	1 ADJUSTMENT	1 ADJUSTMENT
46 A	1 ADJUSTMENT	1 ADJUSTMENT	1 ADJUSTMENT
47 A	1 ADJUSTMENT	1 ADJUSTMENT	1 ADJUSTMENT
48 A	1 ADJUSTMENT	1 ADJUSTMENT	1 ADJUSTMENT
49 A	1 ADJUSTMENT	1 ADJUSTMENT	1 ADJUSTMENT
50 A	1 ADJUSTMENT	1 ADJUSTMENT	1 ADJUSTMENT
51 A	1 ADJUSTMENT	1 ADJUSTMENT	1 ADJUSTMENT
52 A	1 ADJUSTMENT	1 ADJUSTMENT	1 ADJUSTMENT
53 A	1 ADJUSTMENT	1 ADJUSTMENT	1 ADJUSTMENT
54 A	1 ADJUSTMENT	1 ADJUSTMENT	1 ADJUSTMENT
55 A	1 ADJUSTMENT	1 ADJUSTMENT	1 ADJUSTMENT
56 A	1 ADJUSTMENT	1 ADJUSTMENT	1 ADJUSTMENT
57 A	1 ADJUSTMENT	1 ADJUSTMENT	1 ADJUSTMENT
58 A	1 ADJUSTMENT	1 ADJUSTMENT	1 ADJUSTMENT
59 A	1 ADJUSTMENT	1 ADJUSTMENT	1 ADJUSTMENT
60 A	1 ADJUSTMENT	1 ADJUSTMENT	1 ADJUSTMENT
61 A	1 ADJUSTMENT	1 ADJUSTMENT	1 ADJUSTMENT
62 A	1 ADJUSTMENT	1 ADJUSTMENT	1 ADJUSTMENT
63 A	1 ADJUSTMENT	1 ADJUSTMENT	1 ADJUSTMENT
64 A	1 ADJUSTMENT	1 ADJUSTMENT	1 ADJUSTMENT
65 A	1 ADJUSTMENT	1 ADJUSTMENT	1 ADJUSTMENT
66 A	1 ADJUSTMENT	1 ADJUSTMENT	1 ADJUSTMENT
67 A	1 ADJUSTMENT	1 ADJUSTMENT	1 ADJUSTMENT
68 A	1 ADJUSTMENT	1 ADJUSTMENT	1 ADJUSTMENT
69 A	1 ADJUSTMENT	1 ADJUSTMENT	1 ADJUSTMENT
70 A	1 ADJUSTMENT	1 ADJUSTMENT	1 ADJUSTMENT
71 A	1 ADJUSTMENT	1 ADJUSTMENT	1 ADJUSTMENT
72 A	1 ADJUSTMENT	1 ADJUSTMENT	1 ADJUSTMENT
73 A	1 ADJUSTMENT	1 ADJUSTMENT	1 ADJUSTMENT
74 A	1 ADJUSTMENT	1 ADJUSTMENT	1 ADJUSTMENT
75 A	1 ADJUSTMENT	1 ADJUSTMENT	1 ADJUSTMENT
76 A	1 ADJUSTMENT	1 ADJUSTMENT	1 ADJUSTMENT
77 A	1 ADJUSTMENT	1 ADJUSTMENT	1 ADJUSTMENT
78 A	1 ADJUSTMENT	1 ADJUSTMENT	1 ADJUSTMENT
79 A	1 ADJUSTMENT	1 ADJUSTMENT	1 ADJUSTMENT
80 A	1 ADJUSTMENT	1 ADJUSTMENT	1 ADJUSTMENT
81 A	1 ADJUSTMENT	1 ADJUSTMENT	1 ADJUSTMENT
82 A	1 ADJUSTMENT	1 ADJUSTMENT	1 ADJUSTMENT
83 A	1 ADJUSTMENT	1 ADJUSTMENT	1 ADJUSTMENT
84 A	1 ADJUSTMENT	1 ADJUSTMENT	1 ADJUSTMENT
85 A	1 ADJUSTMENT	1 ADJUSTMENT	1 ADJUSTMENT
86 A	1 ADJUSTMENT	1 ADJUSTMENT	1 ADJUSTMENT
87 A	1 ADJUSTMENT	1 ADJUSTMENT	1 ADJUSTMENT
88 A	1 ADJUSTMENT	1 ADJUSTMENT	1 ADJUSTMENT
89 A	1 ADJUSTMENT	1 ADJUSTMENT	1 ADJUSTMENT
90 A	1 ADJUSTMENT	1 ADJUSTMENT	1 ADJUSTMENT
91 A	1 ADJUSTMENT	1 ADJUSTMENT	1 ADJUSTMENT
92 A	1 ADJUSTMENT	1 ADJUSTMENT	1 ADJUSTMENT
93 A	1 ADJUSTMENT	1 ADJUSTMENT	1 ADJUSTMENT
94 A	1 ADJUSTMENT	1 ADJUSTMENT	1 ADJUSTMENT
95 A	1 ADJUSTMENT	1 ADJUSTMENT	1 ADJUSTMENT
96 A	1 ADJUSTMENT	1 ADJUSTMENT	1 ADJUSTMENT
97 A	1 ADJUSTMENT	1 ADJUSTMENT	1 ADJUSTMENT
98 A	1 ADJUSTMENT	1 ADJUSTMENT	1 ADJUSTMENT
99 A	1 ADJUSTMENT	1 ADJUSTMENT	1 ADJUSTMENT
100 A	1 ADJUSTMENT	1 ADJUSTMENT	1 ADJUSTMENT





COUNT1	WORD1	COUNT2	WORD2	COUNT3	WORD3	COUNT4	WORD4
3	EXTENDED	1	EXTEND	1	EXTENDING	16	EXTENSION
2	EXTRASIMUS	2	EXTERIOR	3	EXTERNAL	2	EXTRACT
1	EXTRACTED	2	EYE	<del>1</del>	<del>1</del>	1	EXTRACTICATE
6	FACE	1	FACES	1	FACEWISE	1	FACILITATE
6	FACING	5	FAIL	1	FAILURE	1	FAIRING
1	FALL	1	FANS	2	FAULTY	3	FAYING
2	FAN	1	FANF	1	FALL	4	FAYLER
2	FANT	2	FELT	2	MULTI-TIPPED	2	FICHA
6	FILL	1	FILLED	5	FILLED	2	FILLING
5	FILM	1	FILMS	8	FILTER	4	FILTERED
5	FIR	1	FINAL	1	FIRM	15	FINE
1	FINGER	1	FINGER-TIGHT	1	FINISHES	13	FIRMLY
2	FIRST	8	FIT	1	FITNESS	3	FITS
1	FITTER	17	FITTING	4	FITTINGS	1	FIVE
1	FIVE-DIGIT	27	FIGURE	1	FIGURES	22	FLANGE
2	FLANGE	2	FLANGES	6	FLAT	1	FLANGE
2	FLASHLIGHT	10	FLAT	1	FLAWS	11	FLIGHT
6	FLOATING	1	FLOW	4	FLORA	2	FLUORESCENT
2	FLORA	116	FL	1	FOLLOW	1	FOLLOWED
12	FOLLOWING	13	FOLLOWS	5	FOLLOW-UP	5	FOLLOW-UPS
10	FOE	4	FORCE	2	FORNIGN	3	FORM
17	FOE	3	FORMS	1	FORN	13	FORWARD
1	FOUR-ENDED	2	FOUND	8	FOSS	2	FOUR
3	FRAMES	16	FREE	1	FREEZE	13	FREELY
7	FRAMING	11	FREEWHEELING	2	FREZZENT	3	FREZEUPS
2	FREZZING	1	FRETTED	1	FRICTION	192	FRON
4	FROG	1	FROG	1	FROG	2	FRON
3	FULLY	1	FURNISH	<del>1</del>	<del>1</del>	13	GAGE
1	GAP	6	GAP	2	GAPS	4	GASKET
1	GAZE	11	GASKET	2	GENERAL	3	GENERATOR
3	GENERAL	1	GIVE	8	GAGES	1	GRATE
1	GRATE	27	GLASS	1	GREY	1	GRIND
1	GRINDING	48	GRIP	11	GRIPS	14	GROOVE
3	GROOVES	1	GUIDANCE	5	GUIDE	2	GUIDING
1	GULL	2	GUN	<del>1</del>	<del>1</del>	1	HAIR
1	GULF	2	HALVES	5	HAMMER	7	HAND
2	HAND-LIGHTEN	1	HAND-TO-TOE	5	HANDLE	3	HANDLING
1	HAND-HEEL	18	HAND-TOE	4	HANDS	1	HANGERS--SEE
3	HAND	46	HARDWARE	7	HAS	6	HAVE
5	HAVING	10	HEAD	2	HAYS	14	HEAT
1	HEATED	1	HEAVY	4	HEIGHT	1	HELD
6	HELICAL	2	HELICOPTER	1	HELICOPTERS	4	HEX
1	HIGHER	14	HINGE	1	HISTORICAL	16	HOIST
3	HOLE	17	HOLDING	24	HOLE	24	HOLES
1	HOLE	1	HOLE	4	HORIZONTAL	20	HOLE
2	HOLE	4	HOLE	2	HOLE	2	HOLE
1	HOLE	2	HOLE	2	HOLE	82	HOLE
1	HOLE	5	HOUSINGS	<del>1</del>	<del>1</del>	1	HO
1	HOLE	2	HYDRAULIC	2	IDENTIFIED	4	IDENTIFY
1	HOLE	2	IDENTIFICATION	<del>1</del>	<del>1</del>	1	IMAGINARY
4	IP	64	IP	<del>1</del>	<del>1</del>		

COUNT1	WORD1	COUNT2	WORD2	COUNT3	WORD3	COUNT4	WORD4
3	IMMEDIATELY	5	IMMEDIATELY	2	IMPROVED	429	IN
3	IMMEDIATELY	65	INCH	1	INCH	36	INCL. PLUNG
3	IMMEDIATELY	6	INCHES	1	INCHES	1	INCLUDE
3	INCLUDING	1	INCLUDING	2	INCREASE	1	INCREASING
2	INDICATED	1	INDICATED	6	INDEX	1	INDEXED
2	INDICATED	19	INDIA	2	INDICATE	4	INDICATED
2	INDICATED	3	INDICATOR	4	INDICATORS	1	INDIVIDUAL
1	INDICATED	4	INITIAL	3	INITIALS	85	INJECT
1	INDICATED	21	INPUT	36	INSERT	1	INSERTING
2	INSULTS	2	INSERTS/STUDS	10	INSIDE	13	INSPECT
1	INSULTED	12	INSPECTION	3	INSPECTIONS	1	INSPECTOR
22	INSTALL	39	INSTALLATION	42	INSTALLED	7	INSTALLER
4	INSTALLING	1	INSTRUCTION	1	INSTRUCTIONS	1	INSTRUMENT
1	INSTALLING	5	INSERTING	5	INTERFERENCE	3	INTERNAL
2	INSTALLING	2	INVERT	1	INTERFERED	124	IS
1	INSTALLING	15	IT	5	ITEM	8	ITEMS
1	INSTALLING	10	ITS	4	JACKSCREWS	1	JACK
2	JACKS	2	JACKSCREW	1	JAM	2	JAMMUT
2	JACKETS	7	JET	3	JEEP	1	JOINS
2	JETS	11	KIT	3	LARGER	2	KEEPING
2	JETS	1	LARGE	1	LAYING	2	LACQUER
1	JETS	2	LATERAL	1	LAWYER	1	LACREST
1	JETS	6	LEADING	1	LEADWIRE	1	LE
5	LEAKAGE	1	LEAKING	2	LEANS	14	LEAK
1	LEAKAGE	1	LEAVING	5	LEFT	1	LEAST
3	LEAKING	6	LEGS	10	LENGTH	2	LEG
1	LEAKING	7	LEVEL	8	LEVER	4	LESS
1	LEAKING	2	LIFTING	5	LIGHT	5	LEVERS
3	LEAKING	1	LINE	2	LIGHT	2	LIGHTING
1	LEAKING	36	LIMITS	14	LINE	2	LIMITATIONS
1	LEAKING	30	LINER	2	LINERS	2	LINEARLY
12	LINER	6	LINKS	4	LINT-FREE	3	LINES
1	LINER	3	LISTED	3	LIP	9	LIP
4	LOCATED	1	LOCATED	4	LOCATION	1	LOCAL
17	LOCK	1	LOCKED	1	LOCKED	1	LOCATIONS
1	LOCK	4	LOCKS	3	LOCK-TITE	14	LOCKING
3	LOCKING	1	LOCKS	3	LOCK	15	LOCKWASHER
1	LOCKING	1	LONGITUDINAL	1	LOCKING	1	LONGEST
1	LOCKING	44	LOWER	1	LOWERED	3	LOOSE
1	LOCKING	3	LURE	3	LUBRICANT	1	LOWEST
17	LUBRICATE	13	LUBRICATING	8	LUBRICATION	1	LUBRICANTS
5	LUG	10	LUG	1	MACHINE	19	LUG
2	LUG	39	MAIN	1	MAINTAIN	1	MACHINED
13	MAINTENANCE	10	MAKE	1	MAKING	1	MAINTAINING
4	MANHOLE	1	MANEUVERING	9	MANIFOLD	2	Mallet
51	MANUAL	17	MANUALS	1	MANUFACTURER	13	MANHOLE
2	MANUAL	4	MARKER	1	MARKERS	3	MARK
1	MANUAL	60	MASK	4	MATCHED	11	MARKS
3	MANUAL	6	MATCHMARKS	1	MATCH	2	MATCHMARK
						10	MATERIAL

COUNT1 WGRF1

1000000000  
 1000000000  
 2000000000  
 3000000000  
 4000000000  
 5000000000  
 6000000000  
 7000000000  
 8000000000  
 9000000000  
 1000000000  
 1100000000  
 1200000000  
 1300000000  
 1400000000  
 1500000000  
 1600000000  
 1700000000  
 1800000000  
 1900000000  
 2000000000  
 2100000000  
 2200000000  
 2300000000  
 2400000000  
 2500000000  
 2600000000  
 2700000000  
 2800000000  
 2900000000  
 3000000000  
 3100000000  
 3200000000  
 3300000000  
 3400000000  
 3500000000  
 3600000000  
 3700000000  
 3800000000  
 3900000000  
 4000000000  
 4100000000  
 4200000000  
 4300000000  
 4400000000  
 4500000000  
 4600000000  
 4700000000  
 4800000000  
 4900000000  
 5000000000  
 5100000000  
 5200000000  
 5300000000  
 5400000000  
 5500000000  
 5600000000  
 5700000000  
 5800000000  
 5900000000  
 6000000000  
 6100000000  
 6200000000  
 6300000000  
 6400000000  
 6500000000  
 6600000000  
 6700000000  
 6800000000  
 6900000000  
 7000000000  
 7100000000  
 7200000000  
 7300000000  
 7400000000  
 7500000000  
 7600000000  
 7700000000  
 7800000000  
 7900000000  
 8000000000  
 8100000000  
 8200000000  
 8300000000  
 8400000000  
 8500000000  
 8600000000  
 8700000000  
 8800000000  
 8900000000  
 9000000000  
 9100000000  
 9200000000  
 9300000000  
 9400000000  
 9500000000  
 9600000000  
 9700000000  
 9800000000  
 9900000000

COUNT2 WGRD2 POS WORD LISTING/ASCENDING SEQUENCE COUNT3 WGRD3

1 WATER  
 5 WAX  
 2 WEASUREMENT  
 1 WEATHERED  
 3 WEYMOUTH  
 1 WIDDLE  
 1 WIL-C-5541  
 1 WIL-L-23499A  
 3 WIL-L-1505  
 4 WIL-S-4002  
 11 WIMBLEDON  
 4 WINDING  
 2 WINDY  
 5 WIRE  
 6 WISE  
 2 WAS  
 70 NECESSARY  
 8 NEXT  
 3 NOMENCLATURE  
 1 NOSE  
 6 NOTED  
 15 NUMBER  
 1 NYLON  
 1 ONSERVE  
 2 OO  
 8 OH-50A  
 290 ON  
 3 ONE-HALF  
 9 OPENING  
 3 OPERATIONAL  
 1 ORGANIZATION  
 5 OTHER  
 87 OUTER  
 5 OUTSIDE  
 1 P-C-548  
 5 PACKINGS  
 3 PAGE  
 6 PAIR  
 6 PAFT  
 38 PARTS  
 2 PD  
 6 PENCIL  
 4 PERCENT  
 1 PERMETER  
 1 PERMITTING  
 1 PICK  
 20 PILOT  
 17 PILLION

COUNT4 WGRF4 DATE 80302 1212 PAGE 6

10 MATING  
 1 MMS  
 55 MECHANICIS  
 1 MET  
 4 METHYL-ETHYL-KETONE  
 1 MIL-P-171  
 1 MIL-C-5441A  
 1 MIL-L-273191  
 1 MIL-S-224730  
 4 MIL-S-34020  
 2 MINER  
 1 MINUTE  
 1 MODIFICATION  
 8 MOUNT  
 1 MOUNTMENT  
 1 MUSE  
 1 NATIONAL  
 1 NECESSITATE  
 1 NICKS  
 13 NITRAL  
 105 NIT  
 2 NITING  
 1 NUMBERS  
 3 O-TAIL  
 514 OY  
 122 OUL  
 1 OCF  
 5 OLY  
 1 ONE-INGS  
 30 OR-SITE  
 1 ORIENTATION  
 1 ORLT  
 1 OUTLET  
 3 OUTWARD  
 2 P-C-451  
 1 PACK  
 1 PACKINGS-ON  
 1 PADS  
 1 PALS  
 2 PARTIALLY  
 2 PASS  
 3 PAVING  
 1 PAVEMENT  
 15 PAVING  
 1 PAVING  
 11 PAVING  
 1 PICKUP  
 2 PICKING  
 18 PILES

2 MATTER  
 6 MEASURE  
 4 MECHANICAL  
 13 METAL  
 2 MFG  
 1 MIL-C-15173C  
 1 MIL-C-218A  
 1 MIL-L-770E  
 2 MIL-S-22473C  
 2 MILLER  
 7 MINUTES  
 7 MOC  
 1 MODIFICATIONS  
 23 MOUNTING  
 1 MS2220LKPBA  
 1 NARPHTA  
 1 NEAR  
 2 NEED  
 37 NO  
 2 NONDESTRUCTIVE  
 3 NOTCH  
 2 NOU  
 119 NUT  
 3 OBJECT  
 2 OBTAINED  
 20 OFF  
 2 OLD  
 23 ONE  
 11 ONTO  
 12 OPERATE  
 174 OY  
 1 ORIENTED  
 39 OUT  
 20 OUTLINED  
 33 OVER  
 2 P-C-458  
 1 PACKAGE  
 2 PAD  
 4 PAINT  
 3 PARALLEL  
 1 PARTICLE  
 1 PASSAGE  
 1 PEELER  
 1 PENETRATED  
 44 PENETRATOR  
 4 PERMISSIBLE  
 1 PERTINENT  
 2 PILECE  
 55 PIA  
 1 PIT

COUNT1	WORD1	COUNT2	WORD2	COUNT3	WORD3	COUNT4	WORD4
1	PITCH	18	FITCH-VARYING	2	FITS	1	PITTED
2	PITTING	3	PIVOT	59	PLADE	1	PLACED
1	PLACES	1	PLACING	2	PLAGE	3	PLANETARY
7	PLATED	54	PLATE	2	PLATED	2	PLATES
5	PLATING	7	PLAY	23	PLATE	7	PLUGS
1	PLATE	4	POINT	1	P.L.T.E.R	3	POLLING
1	PLATES	11	POLISH	4	P.L.I.S.H.E.D	3	POLLISHING
2	POLYMER	15	POR	3	PORITION	1	PORTS
2	POLYMER	1	POSITIONED	15	P.O.S.I.T.I.O.N.I.N.G	9	POSITIONS
2	PRESSING	8	P.P.S.T	2	P.P.S.T.S	3	POUNDS
2	PRESSING	1	P.P.F.T.-O.O	2	P.P.R.E.C.E.D.I.N.G	2	P.P.R.E.S.S.U.R.E
2	PRESSING	1	P.P.R.E.H.A.T	1	P.P.R.E.C.O.M.P.I.C.A.T.E	10	P.P.R.E.P.A.R.E
2	PRESSING	3	P.P.R.E.S.C.R.I.B.E.D	1	P.P.R.E.S.E.N.T	1	P.P.R.E.S.E.R.V.A.T.I.V.E
2	PRESSING	2	P.P.R.E.S.S.E.D	1	P.P.R.E.S.S.I.N.G	14	P.P.R.E.S.S.U.R.E
2	PRESSING	2	P.P.R.E.V.E.N.T.I.V.E	1	P.P.R.E.V.I.O.U.S	5	P.P.R.E.V.I.O.U.S.L.Y
3	PRESSING	1	P.P.R.I.N.T.E.D	17	P.P.R.I.N.T.E.R	1	P.R.I.N.T.E.D
1	PRESSING	3	P.P.R.O.C.E.D.U.R.E	17	P.P.R.O.C.E.D.U.R.E.S	2	P.R.O.C.E.S.S
1	PRESSING	1	P.P.R.O.J.E.C.T.S	2	P.P.R.O.C.E.S.S	1	P.R.O.C.E.S.S
1	PRESSING	10	P.P.R.O.P.R.I.E.T.Y	9	P.P.R.O.P.R.I.E.T.Y	3	P.R.O.T.E.C.T
1	PRESSING	9	P.P.R.O.T.E.C.T.I.V.E	12	P.P.R.O.T.E.C.T.O.R	11	P.R.O.V.I.D.E
1	PRESSING	1	P.P.R.O.V.I.D.E.S	1	P.P.R.O.V.I.D.I.N.G	7	P.U.L.L
12	PULLER	2	P.U.L.L.E.R.S	2	P.U.L.L.I.N.G	1	P.U.L.L.S
2	PULLER	1	P.U.L.C.H	1	P.U.R.G.E	1	P.U.R.G.E.D
2	PULLER	5	P.U.S.H	1	P.U.S.H.E.R	1	P.U.S.H
2	PULLER	1	P.U.S.H	2	P.U.S.H-I.N.G	11	Q.U.A.L.I.F.I.E.D
2	PULLER	1	QUICK-DISCONNECT	1	Q.U.I.C.K.-D.I.S.C.O.N.N.E.C.T	1	Q.U.I.C.K.-D.I.S.C.O.N.N.E.C.T
1	PULLER	2	R.A.D.I.A.L	32	R.A.D.I	2	R.A.D.I.S
1	PULLER	4	R.A.I.N	4	R.A.D.I.A.T.O.R	6	R.A.D.I.U.S
1	PULLER	1	R.A.I.N	1	R.A.D.I.U.S	2	R.A.C.H.E.D
1	PULLER	1	R.E.A.D.I.N.G	1	R.A.D.J.U.S.T	1	R.A.C.H.E.D
1	PULLER	1	R.E.A.D.I.N.G	1	R.A.D.J.U.S.T	2	R.A.C.H.E.D
1	PULLER	1	R.E.A.S.S.E.M.B.L.E	14	R.A.S.S.E.M.B.L.Y	9	R.A.C.H.E.D
2	PULLER	3	R.E.C.E.S.S.E.D	1	R.A.S.S.E.S.S.E.S	1	R.A.C.H.E.D
1	PULLER	1	R.E.C.O.M.M.E.N.D.E.D	4	R.A.C.I.O	1	R.A.C.H.E.D
1	PULLER	43	R.E.P.E.R.T	21	R.E.F.E.R.E.N.C.E.S	1	R.A.C.H.E.D
1	PULLER	1	R.E.I.N.S.P.E.C.T	8	R.E.I.N.S.T.A.L.L	5	R.E.I.N.S.T.A.L.L.A.T.I.O.N
1	PULLER	1	R.E.J.E.C.T	1	R.E.I.N.S.T.A.L.L	1	R.E.I.N.S.T.A.L.L.A.T.I.O.N
1	PULLER	2	R.E.L.E.A.S.E	2	R.E.L.I.E.F	1	R.E.I.N.S.T.A.L.L.A.T.I.O.N
1	PULLER	1	R.E.M.A.I.N	1	R.E.M.A.I.N.E.R	9	R.E.M.O.V.E.D./I.N.S.T.A.L.L.A.T.I.O.N
1	PULLER	34	R.E.M.O.V.A.L	1	R.E.M.O.V.A.L	5	R.E.M.O.V.E.D./I.N.S.T.A.L.L.A.T.I.O.N
1	PULLER	14	R.E.M.O.V.E./I.N.S.T.A.L.L	26	R.E.M.O.V.E.D	10	R.E.M.O.V.E.D./I.N.S.T.A.L.L.A.T.I.O.N
1	PULLER	5	R.E.M.O.V.I.N.G	37	R.E.P.A.I.R	1	R.E.P.A.I.R.E.D
1	PULLER	1	R.E.P.A.R.A.B.L.E	16	R.E.P.A.I.R	1	R.E.P.A.I.R
1	PULLER	13	R.E.P.L.A.C.E.D	14	R.E.P.L.A.C.E.M.E.N.T	26	R.E.P.A.I.R
1	PULLER	2	R.E.P.O.S.I.T.I.O.N	3	R.E.S.I.D.U.E	1	R.E.P.A.I.R
1	PULLER	1	R.E.S.E.R.V.I.C.E	1	R.E.S.E.R.V.O.I.R	1	R.E.P.A.I.R
1	PULLER	1	R.E.S.I.D.U.E	1	R.E.S.I.S.T.A.N.C.E	2	R.E.S.P.E.C.T.I.V.E
1	PULLER	4	R.E.S.T	3	R.E.S.T.I.N.G	2	R.E.S.T.S
1	PULLER	2	R.E.S.U.L.T.S	2	R.E.T.A.I.N	1	R.E.T.A.I.N.E.D
1	PULLER	2	R.E.T.A.I.N.E.R.S	21	R.E.T.A.I.N.I.N.G	1	R.E.T.A.I.N.S



COUNT1	WORD1	COUNT2	WORD2	COUNT3	WORD3	COUNT4	WORD4
17	STANDARD	1	STAMPED	17	STAMP	2	STANDARD
1	STANDARDI	59	STANDARDIZED	58	STANDARD	1	STANDS
4	STAR	5	STAR	1	STATED	2	STATIC
1	STARBUCK	1	STARBUCKARY	1	STEADY	9	STEEL
7	STAR	75	STEPS	1	STILL	1	STOCK
1	STAR	5	STEP	5	STIRS	1	STORAGE
1	STAR	2	STEROID	1	STRIKING	1	STRAIGHT
1	STARBUCKLESS	8	STRAP	2	STRINE	2	STRIP
1	STARBUCK	2	STRUCTURE	2	STRIPS	35	STUD
1	STARBUCK	3	SUBSEQUENT	3	STUCK	2	SUFFICIENT
22	STOPS	17	SUITABLE	4	SUB	1	SUPPLEMENTAL
1	SUFFICIENTLY	1	SUPPORTING	8	SUPPORTS	13	SURE
72	SUPPORT	22	SURFACES	2	SURROUNDING	2	SUSPENDED
1	SUPPORT	2	SURVEILLANCE	28	SUSPEND	4	SYMMETRICAL
1	SUPPORT	1	SYNTHETIC	3	SYSTEM		
1	SUPPORTING	1	T-FITTING	1	T-LT-95	1	T-T-548
1	TACHOMETER	2	TACHOMETER	3	TAPPED	59	TAIL
1	TACHOMETER	9	TAKLEDF	1	TAPPING	10	TAIL
1	TACHOMETER	43	TALK	15	TAP	3	TAIL
1	TACHOMETER	3	TAPPING	1	TAP	4	TAIL
1	TACHOMETER	5	TAPPING	1	TAP	6	TEMPERATURE
1	TACHOMETER	1	TAP	25	TAPE	1	TESTED
1	TACHOMETER	1	TESTING	11	TAP	73	THAT
1	TACHOMETER	5	THEIR	1	TAP	8	THEM
1	TACHOMETER	1	THEIRY	1	THERMAL	7	THESE
1	TACHOMETER	5	THICKNESS	1	THICKNESSES	2	THEY
1	TACHOMETER	4	THIRD	74	TIPS	3	THOROUGHLY
1	TACHOMETER	1	THREAD-TAPPING	2	TITANIC	17	THROATS
1	TACHOMETER	36	THROUGH	1	TITANIC	17	THRUST
1	TACHOMETER	21	TIGHTEN	4	TIGHTENING	1	TILT
1	TACHOMETER	2	TIME	4	TIP	2	TIPS
1	TACHOMETER	1	TIT-100	1	TIT-102	267	T
1	TACHOMETER	4	TOGETHER	3	TOLERANCE	1	TOLERANCES
1	TACHOMETER	2	TOOL	40	TOL	1	TOLLING
1	TACHOMETER	59	TOOLS	50	TOP	121	TORQUE
1	TACHOMETER	1	TOPPING	1	TORONTO	6	TOTAL
1	TACHOMETER	1	TOUCHES	4	TORONTO	1	TRACES
1	TACHOMETER	2	TRANSFER	62	TORONTO	3	TRANSVERSE
1	TACHOMETER	1	TREATMENT	1	TORONTO	1	TRAILERSHEETING
1	TACHOMETER	2	TRUNNIONS	1	TORONTO-261	1	TU-S-300
1	TACHOMETER	30	TURE	4	TUBES	1	TUBING
1	TACHOMETER	11	TURN	1	TUBED	2	TURKISH
1	TACHOMETER	2	TRICE	26	TUB	9	TURP
1	TACHOMETER	2	TU-1304	2	TU-1355	2	TU-1369
1	TACHOMETER	1	TU-1400	2	TU-1431	2	TU-1402
1	TACHOMETER	3	TU-1412	4	TU-1420	3	TU-1471
1	TACHOMETER	2	TU-1452	1	TU-1457	1	TU-1467
1	TACHOMETER	1	TU-1470	1	TU-1477	1	TU-1491
1	TACHOMETER	2	TU-1499	1	TU-1490	3	TU-1510
1	TACHOMETER	1	TU-1550-B	1	TU-1550-5	1	TU-1550-7













COUNT1	WORD1	COUNT2	WORD2	COUNT3	WORD3	COUNT4	WORD4
2	DIPLOMA	2	DISPERSION	2	DISTORTION	2	DIVIDE
2	DIPLOMAT	2	DRIVER	2	ENGAGE	2	EGG
2	DIPLOMACY	2	ELECTRICAL	2	ELIMINATE	2	ENGAGED
2	DIPLOMATY	2	ENTERED	2	ENTERING	2	ENTIRE
2	DIPLOMATY	2	EXTENSIONS	2	EXTERIOR	2	EXTRACT
2	DIPLOMATY	2	FAULTY	2	FED	2	FRET
2	DIPLOMATY	2	FELT-TIPPED	2	FIBER	2	FILLING
2	DIPLOMATY	2	FLANGED	2	FLANGES	2	FLASHLIGHT
2	DIPLOMATY	2	FLUSH	2	FOREIGN	2	FOUND
2	DIPLOMATY	2	FREEZING	2	FREEZING	2	FULL
2	DIPLOMATY	2	GENERAL	2	GRINDING	2	GUN
2	DIPLOMATY	2	HAND-TIGHTEN	2	HANDS	2	HELICOPTER
2	DIPLOMATY	2	HOURS	2	HOUSINGS	2	HOWEVER
2	DIPLOMATY	2	IDENTIFIED	2	INDICATION	2	IMPROVED
2	DIPLOMATY	2	INDICATE	2	JACKS	2	INSECTS
2	DIPLOMATY	2	INVERT	2	JACKSCREW	2	JACKSCREW
2	DIPLOMATY	2	JAMMETS	2	JEST	2	KEEPING
2	DIPLOMATY	2	JACOBS	2	LATERAL	2	LOCKS
2	DIPLOMATY	2	LIGHTING	2	LIGHTING	2	LIMIT
2	DIPLOMATY	2	LINEARLY	2	LINGS	2	MADE
2	DIPLOMATY	2	MATCHMARK	2	MATTER	2	MEASURED
2	DIPLOMATY	2	MEG	2	MICROMETER	2	MIL-S-22479C
2	DIPLOMATY	2	MINOR	2	MISSED	2	MODERATE
2	DIPLOMATY	2	MS	2	MISSED	2	NONDESTRUCTIVE
2	DIPLOMATY	2	MS	2	MISSED	2	DEFINED
2	DIPLOMATY	2	MS	2	MISSED	2	P-C-451
2	DIPLOMATY	2	MS	2	MISSED	2	PAIRS
2	DIPLOMATY	2	MS	2	MISSED	2	PASS
2	DIPLOMATY	2	MS	2	MISSED	2	PILOTING
2	DIPLOMATY	2	MS	2	MISSED	2	PLATED
2	DIPLOMATY	2	MS	2	MISSED	2	PROPS
2	DIPLOMATY	2	MS	2	MISSED	2	PROTECTIVE
2	DIPLOMATY	2	MS	2	MISSED	2	PULLING
2	DIPLOMATY	2	MS	2	MISSED	2	RACCS
2	DIPLOMATY	2	MS	2	MISSED	2	RECHECK
2	DIPLOMATY	2	MS	2	MISSED	2	REPOSITION
2	DIPLOMATY	2	MS	2	MISSED	2	RETAIN
2	DIPLOMATY	2	MS	2	MISSED	2	RISE
2	DIPLOMATY	2	MS	2	MISSED	2	ROLLING
2	DIPLOMATY	2	MS	2	MISSED	2	SCRIBED
2	DIPLOMATY	2	MS	2	MISSED	2	SEVERAL
2	DIPLOMATY	2	MS	2	MISSED	2	SHELLAC
2	DIPLOMATY	2	MS	2	MISSED	2	SPLIT
2	DIPLOMATY	2	MS	2	MISSED	2	SPACING
2	DIPLOMATY	2	MS	2	MISSED	2	SPHERICAL
2	DIPLOMATY	2	MS	2	MISSED	2	STRE
2	DIPLOMATY	2	MS	2	MISSED	2	STRUCTURE
2	DIPLOMATY	2	MS	2	MISSED	2	SUSPEND
2	DIPLOMATY	2	MS	2	MISSED	2	TERMINATOR
2	DIPLOMATY	2	MS	2	MISSED	2	THREADED







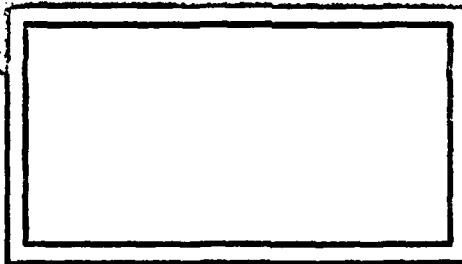


**HEADQUARTERS**

DATA CONTROL NUMBER             
ICD NO / PROJECT NO

**UNITED STATES ARMY TRAINING AND DOCTRINE COMMAND**

**FORT MONROE, VIRGINIA 23651**



PREPARED BY: OPERATIONS DIV, DPFO

ATOP FORM 109-1 Feb 66 edition may be used until exhausted.

COPY \_\_\_\_\_ OF \_\_\_\_\_ COPIES

END

DATE  
FILMED

8 8 2

DTIC