

**DTC FILE COPY**

**HEADQUARTERS**

**DATA CONTROL NUMBER**

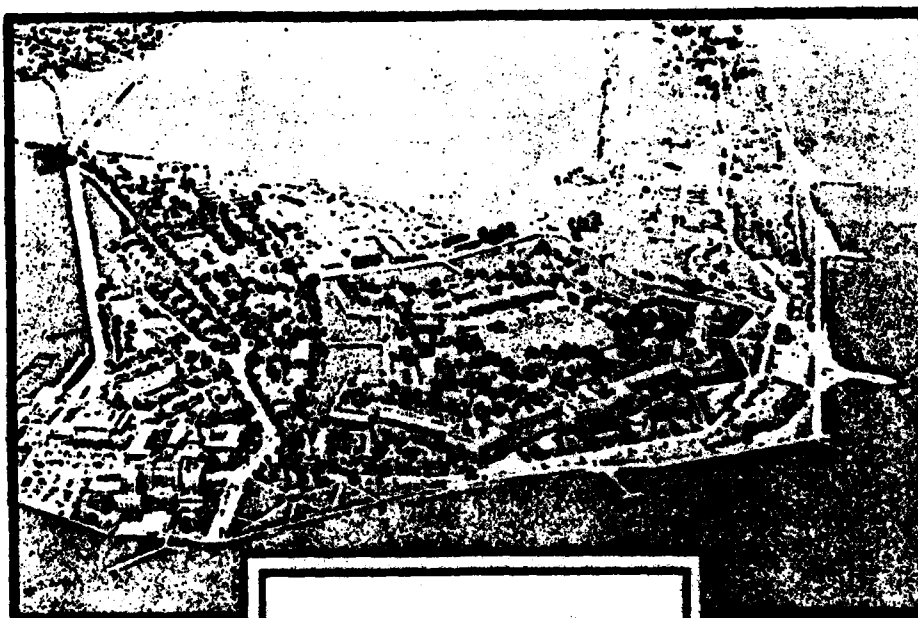


**UNITED STATES ARMY TRAINING AND DOCTRINE COMMAND**

**FORT MONROE, VIRGINIA 23651**

**AD A117336**

**DTIC ELECTIC**  
JUL 2 1982  
H



**CLASSIFICATION STATEMENT**  
Approved for public release  
Distribution Unlimited

Copy available to DTIC does not  
guarantee fully legible reproduction

**Word Frequency Analysis**  
MOB: 63W  
Skill Level 1

**PREPARED BY: OPERATIONS DIV, DPFO**

**ATDP** FORM 109-1  
Oct 68 edition may be used  
until exhausted.

**COPY \_\_\_\_\_ OF \_\_\_\_\_ COPIES**

**82 07 20 188**

## **DISCLAIMER NOTICE**

**THIS DOCUMENT IS BEST QUALITY  
PRACTICABLE. THE COPY FURNISHED  
TO DTIC CONTAINED A SIGNIFICANT  
NUMBER OF PAGES WHICH DO NOT  
REPRODUCE LEGIBLY.**

**REPORT DOCUMENTATION PAGE**

READ INSTRUCTIONS  
BEFORE COMPLETING FORM

1. REPORT NUMBER <b>63W</b>	2. GOVT AGENCY USE ONLY <b>AD-A117336</b>	3. REPORT'S CATALOG NUMBER
4. TITLE (and Subtitle) <b>Word Frequency Analysis NOS: 63W Skill Level 142</b>	5. TYPE OF REPORT & PERIOD COVERED <b>Final</b>	6. PERFORMING ORG. REPORT NUMBER
7. AUTHOR(s) <b>Dr. Alexander A. Longo</b>	8. CONTRACT OR GRANT NUMBER(s)	
9. PERFORMING ORGANIZATION NAME AND ADDRESS <b>Training Developments Institute ATTN: ATTC-DOR Fort Monroe, VA 23651</b>	10. PROGRAM ELEMENT, PROJECT, TASK AREA & WORK UNIT NUMBERS	
11. CONTROLLING OFFICE NAME AND ADDRESS <b>Training Developments Institute ATTN: ATTC-DOR Fort Monroe, VA 23651</b>	12. REPORT DATE <b>May 1981</b>	13. NUMBER OF PAGES <b>16</b>
14. MONITORING AGENCY NAME & ADDRESS (if different from Controlling Office)	15. SECURITY CLASS. (of this report) <b>Unclassified</b>	16. SECURITY CLASSIFICATION/DOWNGRADING SCHEDULE
17. DISTRIBUTION STATEMENT (of this Report)  <b>Approved for Public Release; Distribution is unlimited.</b>		
18. DISTRIBUTION STATEMENT (of the abstract entered in Block 20, if different from Report)		
19. SUPPLEMENTARY NOTES		
20. KEY WORDS (Continue on reverse side if necessary and identify by block number) <b>NOS Vocabulary Readability Comprehension of text Curriculum Development</b>		
21. ABSTRACT (Continue on reverse side if necessary and identify by block number) <b>This report contains a frequency count of the basic vocabulary contained in the Army Soldier's Manual for the NOS/Skill Level designated in the title (item 4). This frequency count reflects only skill levels I/II and excludes the common tasks and those sections which are redundant/incidental to vocabulary analysis (e.g. table of contents, appendices, references, charts, etc). This vocabulary is only a sampling of the entire NOS vocabulary and is subject to change with NOS changes.</b>		

### Contents and General Information

1. The Word Frequency Analysis (WFA) reports were reproduced exactly as generated via computer printout. The prime users of this document were fully cognizant of its contents and required no special instructions for interpretation. However, for the sake of other readers, the following brief description of contents is provided.

2. The WFA reports for most MOS are divided as follows:

- o Skill Level I
- o Skill Level II

However, due to the way some Soldier's Manuals are constructed, the WFA for some MOS have both Skill Levels merged into one report. Each Skill Level is subdivided into two sections.

a. Alphabetic Rank: this section lists all terms in alphabetical order (left to right). To the left of each term is the frequency which that term appears in the text submitted for word frequency count.

b. Frequency Rank: this section lists the same terms contained in the first section of the report but reranked in accordance with their frequency of appearance from highest to lowest. Also, the terms are ranked alphabetically within the same frequency level.

3. It should be noted that the basis of this WFA is the Soldier's Manual. Consequently, this vocabulary set is only a sampling of the entire MOS vocabulary and is subject to change.

Accession For	
DTIC GRA&I	<input checked="" type="checkbox"/>
DTIC TAB	<input type="checkbox"/>
Unannounced	<input type="checkbox"/>
Justification	
By _____	
Distribution/	
Availability Codes	
Dist	Avail and/or Special
A	23



**HEADQUARTERS**  
**UNITED STATES ARMY TRAINING AND DOCTRINE COMMAND**  
**FORT MONROE, VIRGINIA 23651**

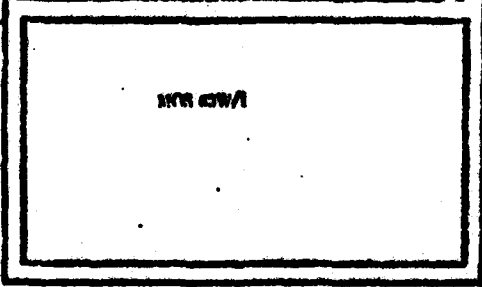
*New Map*  
DATA CONTROL NUMBER \_\_\_\_\_  
JOB NO / PROJECT NO \_\_\_\_\_



~~W~~  
WFA

JUN 8 1961

ORAD



WFA

PREPARED BY: OPERATIONS DIV, DPFO

COPY \_\_\_\_\_ OF \_\_\_\_\_ COPIES

ATDP FORM 109 Replaces ATDP 110, Jul 52, which is obsolete

COUNT1	WORD1	COUNT2	WORD2	COUNT3	WORD3	COUNT4	WORD4
4	-	61	A	17	ARLE	1	ARSPRER
2	ADJUSTERS	7	ACCELERATOR	11	ACCESS	1	ACCIDENTAL
2	ACQUITDATE	1	ACCOMPLISHED	39	ACCOMPLANCE	1	ACCUINT
1	ACT	1	ACTIVATE	1	ACTUATING	1	ACTUATOR
2	ADAPTER	1	ADDITIONAL	4	ADJUST	1	ADJUSTED
1	ADVISOR	1	AGAINST	2	ADDS	21	AIR
1	AIR-ACTUATED	1	AIRBRAKE	1	ALIGN	4	ALIGNMENT
1	ALIEN	7	ALL	1	ALLOWING	1	ALONG
2	ALTERNATOR	9	AN	234	AND	3	ANGLE
1	ANTICIPATED	2	ANY	1	APPLICATION	3	APPLIED
1	APPLY	2	ARE	1	AREA	12	ARM
2	ARMY	1	ARTICLE	9	AS	1	ASSHOLE
81	ASSEMBLY	3	ASSIGNED	19	ASSISTANCE	10	AT
9	ATTACH	1	ATTACHED	1	ATTACHMENT	1	AUXILIARY
27	AXLE	6	B	1	BACK	0	BAR
7	BASE	2	BASIC	10	BATTERIES	2	BATTERY
86	BE	12	BEARING	1	BEARINGS	1	BED
1	BEFIXE	1	BELOW	1	BELTS	1	BESIDE
1	BETWEEN	1	BINDERS	0	BLOCK	11	BLOCKED
2	BLOCKING	3	BLOCKS	2	BODY	6	BOLTS
13	BOOM	3	BOTH	1	BOX	3	BRACES
3	BRACKET	3	BRACKETS	16	BRAKE	2	BRAKES
1	BRAKESHOES	1	BRUSH	1	BULKHEAD	2	BUMPERS
11	BUT	1	BUTTON	17	BY	3	C
8	C-MET	22	CABLE	8	CABLES	17	CAN
1	CAP	3	CAPABILITIES	3	CAPSCREWS	2	CANNON
1	CARBURETOR	1	CARE	24	CARGO	2	CARRIER
3	CASE	3	CAUTION	1	CENTER	4	CHAIN
2	CHAINS	1	CHAMBER	1	CHANGE	46	CHAP
17	CHAPTER	4	CHASSIS	0	CHECK	1	CHECKING
1	CHIPPED	1	CHISELS	3	CHECKED	2	CLOCKS
3	CLAMP	2	CLAMPS	1	CLEAN	3	CLEANER
2	CLEANING	1	CLEAR	1	CLEARANCE	1	CLEAR'D
1	CLEATS	1	CLEVIS	2	CLOSE	18	CLUTCH
2	COILS	2	COLUMN	0	COMMERCIAL	3	COMPONENTS
1	COMPOUND	2	COMPRESSOR	1	COMPRESSOR-TO-RESERVOIR	46	CONDITIONS
3	CONNECT	1	CONNECTIONS	6	CONNECTOR	1	CONSOLE
1	CONSTANT	1	CONTAINER	1	CONTINUE	1	CONTROL
17	CONTROL	4	CONTROLS	3	CONVERTER	2	COOLANT
2	COULER	5	COULING	2	CORRESPONDENCE	1	COUPLING
2	COURSE	10	COVER	2	COVERABLE	1	COVERS
3	CRANE	1	CREW	4	CURBING	3	CUT
1	CUTOFF	4	CUTTING	16	CYLINDER	2	CYLINDERS
2	D	1	DAMAGE	1	DASH	1	DECK
1	DEFECTIVE	1	DEPENDING	1	DEPRESS	1	DEPTH
1	DETERMINED	6	DEVICE	1	DIESEL	1	DIFFERENTIAL
2	DIRECT	25	DISABLED	1	DISCARD	34	DISCONNECT
7	DISCONNECTED	2	DISCONNECTING	4	DISBURSE	2	DIVIDER
69	DT	1	DOUBLE	3	DRAG	13	DRAIN
5	DRAINED	1	DRIFTS	13	DRIVE	1	DRIVER

NBS WORD LISTING/ASCENDING SEQUENCE

COUNT1 WORD1

COUNT2 WORD2

COUNT3 WORD3

COUNT4 WORD4

4 DRUM  
 2 E  
 2 ELECTRIC  
 4 ENGAGE  
 34 ENVIRONMENT  
 1 EXCEED  
 3 EYES  
 2 FIGURE  
 1 FIRST  
 3 FLEXIBLE  
 49 FM  
 49 FOR  
 3 FRICTION  
 9 FUEL  
 1 GAIN  
 2 GASOLINE  
 2 GLOVES  
 1 GRINDER  
 1 HAMMER  
 1 HANDLES  
 7 HARNESS  
 7 HEAD  
 1 HEIGHT  
 3 HITCH  
 2 MUD  
 1 MUSES  
 1 MUD  
 32 IF  
 150 IN  
 1 INSERT  
 1 INSTALLED  
 1 INTAKE  
 2 ISSUE  
 1 J  
 1 JACKS  
 2 KEY  
 1 L  
 3 LP  
 1 LFAST  
 0 LPVERS  
 1 LIGHTS  
 11 LINNAGE  
 1 LIADED  
 0 LICK  
 2 LIND  
 1 LUBRICATING  
 33 MAINTENANCE  
 33 MANUAL  
 34 MEASURES  
 1 MEDIUM

1 QUAL  
 18 EACH  
 7 ELECTRICAL  
 1 ENGAGEMENT  
 1 ENVIRONMENT  
 1 EXCESS  
 3 F  
 2 FILL  
 3 FITTINGS  
 6 FLOOR  
 1 FOLLOW  
 1 FORCING  
 42 FROM  
 1 G  
 1 GAP  
 23 GEAR  
 4 GOOSENECK  
 3 GROUND  
 1 HAND  
 1 HANDLING  
 1 HAS  
 1 HEADLIGHT  
 1 HEMP  
 14 MOIST  
 2 HOOK  
 7 HOUR  
 31 HYDRAULIC  
 3 II  
 3 INDICATOR  
 15 INSPECT  
 1 INSTRUMENT  
 3 INTO  
 5 ITEM  
 3 JACK  
 1 JACKSTANDS  
 3 KING  
 1 LAID  
 1 LB-FY  
 1 LESS  
 15 LIFT  
 9 LINE  
 26 LISTED  
 2 LOADING  
 1 LOCKWASHERS  
 6 LUNER  
 2 LUGS  
 3 MANIPOLD  
 3 MANUALS  
 2 MEASURING  
 1 MENT

1 MILL  
 2 ENGIS  
 1 EMERGENCY  
 33 ENGINE  
 71 EQUIPMENT  
 1 EXHAUST  
 24 FIELD  
 2 FILTER  
 1 FLAT  
 1 FLUID  
 18 FOLLOWING  
 9 FORK  
 17 FRONT  
 1 GAGE  
 8 GASKET  
 2 GEARBOX  
 1 GOVERNOR  
 2 GUARD  
 6 HANDBRAKE  
 2 HANDTOOLS  
 1 HATCH  
 1 HEATER  
 1 HFT  
 2 HOISTING  
 1 HORIZONTAL  
 23 HOURS  
 13 I  
 3 IIT  
 1 INJURY  
 20 INSTALL  
 1 INSURE  
 1 INVENTORY  
 2 ITEMS  
 1 JACKED  
 1 K  
 1 KNOCKOUT  
 1 LASH  
 1 LEAYS  
 3 LEVEL  
 1 LIFTED  
 17 LINES  
 10 LO  
 1 LOADS  
 1 LONG  
 1 LUPRICANTS  
 1 M  
 1 MANIPOLD-TO-AIR  
 2 MARK  
 2 MECHANIC  
 1 METAL

1 MILLING  
 1 ELOCMS  
 4 END  
 1 ENGINE  
 1 EQUIPMENT  
 3 EYEOLTS  
 4 FIG  
 1 FINAL  
 1 FLEY  
 7 FLYWHEEL  
 1 FOOT  
 1 FRAME  
 3 FT-LO  
 1 GAGES  
 1 GASKETS  
 29 GENERAL  
 1 GRIND  
 1 H  
 1 HANDLE  
 1 HARDWARE  
 22 HAVE  
 10 HEAVY  
 1 HINCE  
 1 MCLE  
 2 HOSE  
 6 HOUSING  
 2 IDLER  
 1 ZAPPELLER  
 2 INLET  
 1 INSTALLATION  
 1 INSURING  
 2 IS  
 4 IV  
 1 JACKREAR  
 1 KEEPING  
 11 KNOWLEDGE  
 1 LAYER  
 3 LEAYS  
 13 LEVER  
 22 LIFTING  
 4 LIM  
 0 LOAD  
 1 LOCATED  
 3 LOOSEN  
 2 LUBRICATE  
 2 MAINTAIN  
 1 MAXIMON  
 1 MAXIMON  
 29 MECHANICIS  
 1 MME

COUNT1	WORD1	COUNT2	WORD2	HQS WORD LISTING/ASCENDING SEQUENCE COUNT3	WORD3	COUNT4	WORD4	DATE 01149 1635 PAGE 3
1	MILL	19	MINUTES	1	MOLL	19	MILK	
3	MOUNTING	1	MOUNTS	1	MOLVE	1	MOUNTMENT	
1	MUFFLER	1	MUSHROOMED	69	MUST	1	MUSI	
1	M500	9	M520	3	M553	3	M561	
2	M556	3	M746	3	M747	1	M560	
7	M516	2	M877	2	M880	10	M911	
1	N	1	NCAL-1/2	1	NEAR	2	NECESSARY	
1	NEGOTIATING	1	NEUTRAL	9	NEW	1	NO-FUEL	
17	NIT	42	NOTE	1	NUT	1	NUTS	
1	O	2	OBSERVE	74	OF	1	OFF	
8	OIL	1	OLD	13	ON	1	ON-VEHICLE	
1	ONCE	12	ONE	2	ONLY	5	ONTC	
2	OPEN	1	OPENED	1	OPERATING	1	OPERATION	
2	OPERATIONS	2	OPERATOR	38	OR	26	ORDER	
1	ORIGINAL	2	OTHER	2	OUT	1	OUTPUT	
1	OUTRIGGERS	1	OVER	1	OVERHEAT	4	OXYACETYLENE	
1	OXYGEN	1	P	1	PADS	3	PAN	
2	PANEL	1	PANELS	44	PANA	1	PARKED	
3	PARKING	2	PART	8	PARTS	2	PEDAL	
1	PEDESTAL	2	PERFORMANCE	1	PER	11	PERFORM	
32	PERFORMANCE	35	PERFORMED	23	PERFORMING	1	PERFORMANCE	
3	PILOT	4	PIN	13	PINS	2	PINTLE	
6	PITMAN	3	PIVOT	3	PLACE	1	PLACED	
2	PLANT	12	PLATE	3	PLATES	1	PLATFORM	
1	PLUG	1	PLUGS	1	POINT	1	PUPPET	
21	POSITION	4	POSITIONED	1	POSITIONS	1	POST	
13	POWER	1	POWERPLANT	2	PRECAUTIONS	1	PREHEAT	
1	PREPARE	6	PRESSURE	1	PRESSURIZATION	2	PREVENT	
2	PRIMER	29	PRIOR	8	PROPELLER	2	PROPER	
2	PROPERLY	17	PROVIDED	2	PRY	2	PSI	
1	PSRA	1	PULL	3	PULLER	17	PUMP	
1	PUMP-TO-MANIFOLD	1	PUMP-TO-PRIMER	1	PUNCHES	1	PUSH	
1	PUT	1	Q	1	Q	1	RACKS	
6	RAGS	1	RAIL	1	RAILINGS	2	RAISE	
2	RAISED	1	RE-ENGAGE	16	REAR	4	REASSEMBLE	
4	RECOVER	1	RECOVERABLE	2	RECOVERY	48	REFERENCES	
1	REFERENCE	6	REINSTALL	57	RELATED	1	RELEASE	
2	RELICATE	2	REMAINING	1	REMOVE	25	REMOVAL	
128	REMOVE	9	REMOVED	1	REMOVED	1	REMOVING	
1	REPAIR	109	REPLACE	32	REPLACEMENT	11	REQUIRE	
26	REQUIRED	3	RESERVOIR	1	REST	3	RETAINER	
1	RETAINING	1	RETORQUE	3	RETURN	27	REVERSE	
1	REWIND	4	RIG	2	RIGGING	5	RING	
1	REMOVAL	3	RUCKER	7	RUDD	1	RIDS	
1	ROLLER	1	ROLLERS	5	ROPE	1	ROTATE	
1	RUTOR	1	ROUTE	3	S	1	SAFE	
3	SAFETY	1	SCREWDRIVERS	2	SCREWS	3	SEAL	
1	SEALED	2	SEALS	3	SEAT	30	SEC	
1	SECTOR	4	SECURE	1	SECURED	1	SECRETLY	
1	SECURING	1	SELECT	7	SEMITRAILER	1	SENCING	

COUNT1	WORD1	COUNT2	WORD2	COUNT3	WORD3	COUNT4	WORD4
2	SEPARATE	1	SEPARATED	70	SERIFS	19	SERVICE
1	SERVICEABILITY	2	SERVICEABLE	9	SERVICES	4	SET
2	SITS CREW	4	SHACKLES	22	SHAFT	1	SHAFTS
9	SPLIT	1	SHEATH	1	SHIFTING	9	SHIPS
2	SHIPPER	1	SHIPPING	9	SHOCK	34	SHIP
1	SINGLE	16	SHOULD	2	SIDE	11	SIMILAR
1	SIX-WHEEL	11	SKILLS	1	SLIDE	9	SLING
2	SLOWLY	1	SNATCH	1	SHUGLY	1	SOLENOID
1	SOLVENT	2	SPANNER	1	SPARK	1	SPECIAL
3	SPECIFICATION	4	SPECIFICATIONS	1	SPEED	2	SPEEDOMETER
1	SPINDLE	1	SPREADER	1	SPRING	1	SPRINGS
3	STAND	39	STANDARD	3	STAPES	3	START
1	STARTER	1	STEADY	2	STEEL	2	STEER
36	STEERING	2	STEPS	3	STOP	1	STORE
3	STUNED	1	STRETCH	1	STUDS	2	STUDY
16	SUITABLE	2	SUM	39	SUPERVISION	11	SUPPORT
2	SUPPORTED	2	SUPPORTS	8	SWING	9	SWITCH
1	SWIVEL	1	SWIVELS	1	SYNTHANE	12	SYSTEM
1	T	1	TABLE	1	TACHOMETER	2	TAG
7	TAKEOFF	1	TANG	1	TANK	108	TASK
11	TASKS	33	TASKS	81	TECHNICAL	1	TECPICAL
2	TELESCOPING	2	TEMPERATURE	1	TEND	1	TENSION
2	TENSIONER	1	TEST	1	TE	1	THAN
13	THAT	154	THE	1	THEM	1	THEA
1	THEORY	1	THERMOSTAT	69	THIS	2	THREE
4	THRUSTLE	3	THROUGH	1	THRUST	1	TIE
1	TIEDOWN	1	TIES	1	TIGHT	1	TIGHTEN
1	TIGHTLY	1	TILT	1	TIRE	84	TP
114	TU	1	TOGETER	1	TOGETHER	1	TOLERANCES
1	TON	1	TONS	4	TOOL	32	TOOLKIT
1	TOOLKITS	3	TOOLS	17	TORQUE	7	TOW
5	TOWING	1	TRACK	6	TRACTOR	10	TRAILER
27	TRANSFER	31	TRANSMISSION	1	TRANSMISSION-TO-TRANSFER	2	TRANSMITTER
10	TRANSPORTER	34	TRUCK	9	TRUCK-TRACTOR	2	TRUCK-WRECKER
2	TUBE	1	TUNNEL	2	TURN	1	TURNS
5	TWJ	2	U-BOLTS	1	UNBOLT	1	UNC
6	UNDER	1	UNHOOK	8	UNIT	1	UNIVERSAL
1	UNLOCK	1	UNSERVICEABLE	1	UNTIL	3	UNWIND
5	UP	3	UPPER	1	UPWARD	1	USE
1	USED	27	USING	4	UTILITY	4	V
16	VALVE	1	VARY	67	VEHICLE	2	VEHICLE'S
1	VEHICLES	1	VEHICLES	1	VENTILATOR	3	VII
1	VIII	1	WARNING	1	WASHER	4	WASHERS
5	WATER	1	WEAR	1	WEDGES	2	WEIGHT
1	WELDER'S	3	WELDING	13	WHEEL	11	WHEELS
3	WHEN	48	WILL	18	WINCH	1	WINCH/FIELD
1	WINCHED	1	WINCHING	3	WIND	3	WIRE
7	WIRING	100	WITH	34	WITHIN	4	WOOD
1	WITCHEN	1	WORK	1	WRECKE	17	WRECKER
2	WRECKER'S	10	WRENCH	5	X	1	XI

COUNT1 WORD1

1 XIV  
1 XXVI

COUNT2 WORD2

1 XVI  
2 YUKE

ROS WORD LISTING/ASCENDING SEQUENCE

COUNT3 WORD3

1 XXIII  
2 YIU

DATE 01149 1633 PAGE 3

COUNT4 WORD4

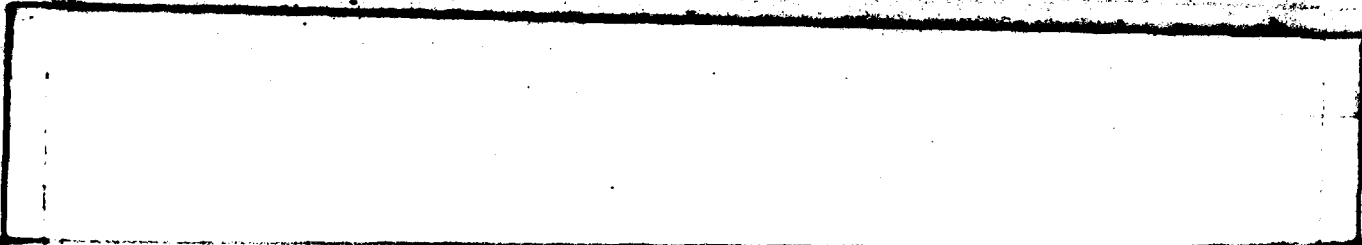
1 XXIV  
1 ZFAD

COUNT1 WORD1	COUNT2 WORD2	COUNT3 WORD3	COUNT4 WORD4
274 AND	154 THE	190 IN	128 REMOVE
114 TH	109 REPLACE	108 TASK	100 WITH
86 RF	84 IN	81 ASSEMBLY	81 TECHNICAL
81 YIU	74 UP	71 EQUIPMENT	69 DO
69 THIS	67 VEHICLE	65 MIST	61 A
57 RELATED	54 DISCONNECT	54 TRUCK	53 MANUAL
53 TASKS	48 REFERENCES	48 WILL	46 CHAP
46 CONDITIONS	45 FUP	44 PARA	43 FH
42 FROM	42 NOTE	38 DR	38 SEC
36 FIEL	36 LISTED	36 REQUIRED	36 STEERING
35 ACCORDANCE	35 ENGINE	35 PERFORMED	35 STANDARD
35 SUPERVISION	34 ENVIRONMENT	34 MEASURES	34 SHOP
34 WITHIN	33 MAINTENANCE	32 IF	32 PERFORMANCE
32 REPLACEMENT	32 TOOLKIT	31 HYDRAULIC	31 TRANSMISSION
29 GENERAL	29 MECHANIC'S	28 INSTALL	27 AXLE
27 REVERSE	27 TRANSFER	27 USING	26 ORDER
25 DISABLED	25 GEAR	25 PRIOR	25 REMOVAL
24 CARGO	23 HOURS	23 PERFORMING	22 CABLE
22 HAVE	22 LIFTING	22 SHAFT	21 AIR
21 POSITION	20 SERIES	19 MINUTES	18 CLUTCH
18 EACH	18 FOLLOWING	18 WINCH	17 ABLE
17 BY	17 CAN	17 CHAPTER	17 CONTROL
17 FRONT	17 LINES	17 NET	17 PROVIDED
17 PUMP	17 TORQUE	17 WRECKER	16 BRAKE
16 CYLINDER	16 LD	16 REAR	16 SHOULD
16 SUITABLE	16 VALVE	15 ASSISTANCE	15 INSPECT
15 LIFT	15 MOTOR	15 SERVICE	14 MOIST
13 ACCESS	13 BODH	13 DRAIN	13 DRIVE
13 I	13 LEVER	13 DR	13 PINS
12 POWER	13 THAT	13 WHEEL	12 ARM
12 BEARING	12 ONE	12 PLATE	12 SYSTEM
11 BLOCKED	11 BUT	11 KNOWLEDGE	11 LINAGE
11 PERFORM	11 REQUIRE	11 SIMILAR	11 SKILLS
11 SUPPORT	11 TASK'S	11 WHEELS	10 AT
10 BATTERIES	10 COVER	10 HEAVY	10 H911
10 TRAILER	10 TRANSPORTER	10 WREACH	9 AS
9 ATTACH	9 FORK	9 FUEL	9 LINE
9 H520	9 NEW	9 REMOVED	9 SHIFT
9 TRUCK-TRACTOR	8 BAR	8 BLOCK	8 C-MET
8 CABLES	8 CHECK	8 COMMERCIAL	8 GASKET
8 LOAD	8 OIL	8 PARTS	8 PROPELLER
8 SWING	8 UNIT	7 ALL	7 BASF
7 DISCONNECTED	7 FLYWHEEL	7 HARNESS	7 HEAD
7 HOUR	7 H916	7 RCD	7 SEMITRAILER
7 TAKEOFF	7 TOV	7 WIRING	6 B
6 BOLTS	6 CONNECTOR	6 DEVICE	6 FLOCK
6 HANDBRAKE	6 HOUSING	6 LEVERS	6 LOCK
6 LOWER	6 MANUALS	6 PITMAN	6 PRESSURE
6 RAGS	6 REINSTALL	6 TRACTOR	6 UNDER
5 AH	5 BRACKET	5 C	5 CLEANER

COUNT1	WORD1	COUNT2	WORD2	COUNT3	WORD3	COUNT4	WORD4
3	CONVERTER	3	COILING	3	CUT	3	DRAINED
3	F	3	FI	3	ITPM	3	JACK
3	INTII	3	PLACI	3	PULLER	3	RTIC
3	NIPI	3	SHINS	3	SLING	3	SWITCH
3	THING	3	TWU	3	UP	3	WATER
3	X	4	-	4	ADJUST	4	ALIGNMENT
4	CHAIN	4	CHASSIS	4	CONTROLS	4	CURNING
4	CUTTING	4	DISENGAGE	4	DRUM	4	END
4	FIG	4	GOOSENECK	4	IV	4	LINK
4	DYACETYLENE	4	PIN	4	POSITIONED	4	REASSEMBLE
4	RECOVER	4	RIG	4	SECURE	4	SET
4	SHACKLES	4	SPECIFICATIONS	4	THROTTLE	4	TOOL
4	UTILITY	4	V	4	WASHERS	4	WIRF
3	ANGLE	3	APPLIED	3	ASSIGNED	3	BLCKCS
3	BOTH	3	BRACES	3	BRACKETS	3	CAPABILITIES
3	CAPSCREWS	3	CASE	3	CAUTION	3	CHECKED
3	CLAMP	3	COMPONENTS	3	CONNECT	3	CRANE
3	DRAG	3	DUAL	3	ENGAGE	3	EYEPOLTS
3	EYES	3	FITTINGS	3	FLEXIBLE	3	FRICTION
3	FT-L3	3	GROUND	3	HITCH	3	III
3	INDICATOR	3	INTD	3	KING	3	LB
3	LEAKS	3	LEVEL	3	LOOSEN	3	MANIFOLD
3	MOUNTING	3	M553	3	M561	3	M746
3	M747	3	PAN	3	PARKING	3	PILCT
3	PIVOT	3	PLATES	3	RESERVOIR	3	RETAINER
3	RETURN	3	ROCKER	3	S	3	SAFETY
3	SEAL	3	SEAT	3	SHIPPER	3	SHOCK
3	SPECIFICATION	3	STAND	3	STANDS	3	STAPT
3	STOP	3	STOWED	3	THROUGH	3	TOOLS
3	UNWIND	3	UPPER	3	VII	3	WELDING
3	WHEN	3	WIND	3	WOOD	3	ABSCRBERS
2	ACCELERATOR	2	ACCOMMODATE	2	ADAPTER	2	AIDS
2	ALTERNATOR	2	ANY	2	ARE	2	ARMY
2	BASIC	2	BATTERY	2	BLCKING	2	BCDY
2	BRAKES	2	BUMPERS	2	CARBON	2	CARRIER
2	CHAINS	2	CHECKS	2	CLAMPS	2	CLEANING
2	CLOSE	2	COILS	2	COLUMN	2	COMPRESSOR
2	COOLANT	2	COOLER	2	CORRESPONDENCE	2	COUPSE
2	COVERALLS	2	CYLINDERS	2	D	2	DIRECT
2	DISCONNECTING	2	DIVIDER	2	E	2	EDGES
2	ELECTRIC	2	ELECTRICAL	2	FIGURE	2	FILL
2	FILTER	2	GASOLINE	2	GEARBOX	2	GLOVES
2	GUARD	2	HANDTOOLS	2	HOISTING	2	HOON
2	HOOK	2	HOSE	2	IDLER	2	INLET
2	IS	2	ISSUE	2	ITEMS	2	KEY
2	LOADING	2	LOU	2	LUBRICATE	2	LUGS
2	MAINTAIN	2	MARK	2	MEASURING	2	MECHANIC
2	M656	2	M877	2	M880	2	NECESSARY
2	PRESERVE	2	ONLY	2	OPEN	2	OPERATIONS
2	OPERATUR	2	OTHER	2	OUT	2	PANE

COUNT1	WORD1	COUNT2	WORD2	COUNT3	WORD3	COUNT4	WORD4
2	PART	2	PEDAL	2	PERFORMANCE	2	PINTLE
2	PLANT	2	PRECAUTIONS	2	PREVENT	2	PRIMER
2	PROPER	2	PROPERLY	2	PRY	2	PSI
2	RAISE	2	RAISED	2	RECOVERY	2	RELOCATE
2	REMAINING	2	RIGGING	2	SCREWS	2	SEALS
2	SEPARATE	2	SERVICEABLE	2	SERVICES	2	SETSCREW
2	SIDE	2	SLOWLY	2	SPANNER	2	SPLITDRUM
2	STEEL	2	STEER	2	STEPS	2	STUDY
2	SUN	2	SUPPORTED	2	SUPPORTS	2	TAG
2	TELESCOPING	2	TEMPERATURE	2	TENSIONER	2	THREE
2	TRANSMITTER	2	TRUCK-WRECKER	2	TUBE	2	TURN
2	U-BOLTS	2	VEHICLES	2	WEIGHT	2	WRECKER'S
2	YOKES	1	ABSORBER	1	ACCIDENTAL	1	ACCOMPLISHED
1	ACCOUNT	1	ACT	1	ACTIVATE	1	ACTUATING
1	ACTUATOR	1	ADDITIONAL	1	ADJUSTED	1	ASSEMBLY
1	AGAINST	1	AIR-ACTUATED	1	AIRBRAKE	1	ALIGN
1	ALIGNED	1	ALLOWING	1	ALONG	1	ANTICIPATED
1	APPLICATION	1	APPLY	1	AREA	1	ARTICLE
1	ASSEMBLE	1	ATTACHED	1	ATTACHMENT	1	AUXILIARY
1	BACK	1	BEARINGS	1	BFO	1	BEFORE
1	BELGA	1	BELTS	1	RESIDE	1	BETWEEN
1	BINDERS	1	BOX	1	BRAKESHOES	1	BRUSH
1	BULKHEAD	1	BUTTON	1	CAP	1	CARBURETOR
1	CARE	1	CENTER	1	CHAMBER	1	CHANGE
1	CHECKING	1	CHIPPED	1	CHISELS	1	CLEAN
1	CLEAR	1	CLEARANCE	1	CLEARED	1	CLEATS
1	CLEVIS	1	COMPOUND	1	COMPRESSOR-TO-RESERVOIR	1	CONNECTIONS
1	CONSOLE	1	CONSTANT	1	CONTAINER	1	CONTINUE
1	CONTRAI	1	COUPLING	1	COVERS	1	CREW
1	CUTOFF	1	DAMAGE	1	DASH	1	DECK
1	DEFECTIVE	1	DEPENDING	1	DEPRESS	1	DEPTH
1	DETERMINED	1	DIESEL	1	DIFFERENTIAL	1	DISCARD
1	DOUBLE	1	DRIFTS	1	DRIVEN	1	DULL
1	DULLING	1	ELDS	1	EMERGENCY	1	ENGAGEMENT
1	ENDING	1	ENVIRONMENT	1	EQUIPMENT	1	EXCED
1	EXCESS	1	EXHAUST	1	FINAL	1	FIRST
1	FLAT	1	FLEX	1	FLUID	1	FOLLOW
1	FOOT	1	FORCING	1	FRAME	1	G
1	GAGE	1	GAGES	1	GAIN	1	GAP
1	GASKETS	1	GOVERNOR	1	GRIND	1	GRINDER
1	H	1	HAMMER	1	HARD	1	HANDLE
1	HANDLES	1	HANDLING	1	HARDWARE	1	HAS
1	HATCH	1	HEADLIGHT	1	HEATER	1	HIGHT
1	HEIP	1	HET	1	HINGE	1	HOLE
1	HORIZONTAL	1	HUSES	1	HUB	1	IMPELLER
1	INJURY	1	INSERT	1	INSTALLATION	1	INSTALLED
1	INSTRUMENT	1	INSURE	1	INSURING	1	INTAKE
1	INVIJURY	1	J	1	JACKED	1	JACKREAR
1	JACKS	1	JACKSTANDS	1	K	1	KEEPING
1	KNICKOUT	1	L	1	LATO	1	LASH

COUNT1	WORD1	COUNT2	WORD2	COUNT3	WORD3	COUNT4	WORD4
1	LAYER	1	LB-IT	1	LFANS	1	LEAST
1	LEAS	1	LIFTID	1	LIGHTS	1	LOADED
1	LOADS	1	LOCATED	1	LICKWASHERS	1	LONG
1	LUBRICANTS	1	LUBRICATING	1	L	1	MANIFOLD-TD-AIR
1	MANNER	1	MAXIMUM	1	M	1	MENT
1	METAL	1	MMF	1	MEDIUM	1	MULL
1	MOUNTS	1	MUVE	1	MILE	1	MUFFLER
1	MUSHROOMED	1	MISS	1	MOVEMENT	1	MROO
1	N	1	NCAL-1/2	1	MPOO	1	NEGOTIATING
1	NEUTRAL	1	NO-FUEL	1	NEAP	1	NUTS
1	O	1	OFF	1	NUT	1	ON-VEHICLE
1	ONCE	1	OPENED	1	OLD	1	OPERATION
1	ORIGINAL	1	OUTPUT	1	OPERATING	1	OVER
1	OVER-HEAT	1	OXYGEN	1	OUTRIGGERS	1	P
1	PANELS	1	PARKED	1	P	1	PADS
1	PERFORMANCE	1	PLACED	1	PEDESTAL	1	PER
1	PLUGS	1	POINT	1	PLATFORM	1	PLUG
1	POST	1	POWERPLANT	1	PUPPET	1	POSITIONS
1	PRESSURIZATION	1	PSRA	1	PREHEAT	1	PREPARE
1	PUMP-TD-PRIMER	1	PUNCHES	1	PULL	1	PUMP-TD-MANIFOLD
1	Q	1	R	1	PUSH	1	PUT
1	RAILINGS	1	RE-ENGAGE	1	RACKS	1	RAIL
1	RELEASE	1	REMDTE	1	RECOVERABLE	1	REFERANCES
1	REPAIR	1	REST	1	REMOVER	1	REMOVING
1	REWIND	1	REMOVAL	1	RETAINING	1	RETRACUE
1	ROLLERS	1	ROTATE	1	RODS	1	ROLLER
1	SAFE	1	SCREWDRIVERS	1	ROTOR	1	ROUTE
1	SECURED	1	SECURELY	1	SEALED	1	SECTOR
1	SENDING	1	SEPARATED	1	SECURING	1	SELECT
1	SHIFTER	1	SHIFTING	1	SERVICEABILITY	1	SHAFTS
1	SIX-WHEEL	1	SLIDE	1	SHIPPING	1	SHOLD
1	SOLFADIO	1	SOLVENT	1	SHATCH	1	SHUGLY
1	SPEED	1	SPINDLE	1	SPARK	1	SPECIAL
1	SPRINGS	1	STARTER	1	SPREADER	1	SPRING
1	STRETCH	1	STUDS	1	STEADY	1	STORE
1	SYNTHANE	1	T	1	SWIVEL	1	SWIVELS
1	TANG	1	TANK	1	TABLE	1	TACHOMETER
1	TENSION	1	TEST	1	TECHICAL	1	TEND
1	THEY	1	THEN	1	TG	1	THAN
1	THRUST	1	TIE	1	THERRY	1	THERMOSTAT
1	TIGHT	1	TIGHTEN	1	TIEDOWN	1	TIES
1	TIRE	1	TUCETER	1	TIGHTLY	1	TILT
1	TON	1	TONS	1	TOGETHER	1	TOLFRANCES
1	TRANSMISSION-TD-TRANSFER	1	TUNNEL	1	TOOLKITS	1	TRACK
1	UNC	1	UNHOOK	1	TURNS	1	UNBELT
1	UNSERVICEABLE	1	UNTIL	1	UNIVERSAL	1	UNLOCK
1	USED	1	VARY	1	UPWARD	1	USE
1	VENTILATOR	1	VIII	1	VEHICLES	1	VEHICLES
1	WEAR	1	WEDGES	1	WARNING	1	WASPER
1	WINCHED	1	WINCHING	1	WELDERTS	1	WINCH/FIELD
				1	WDDDFM	1	WORA



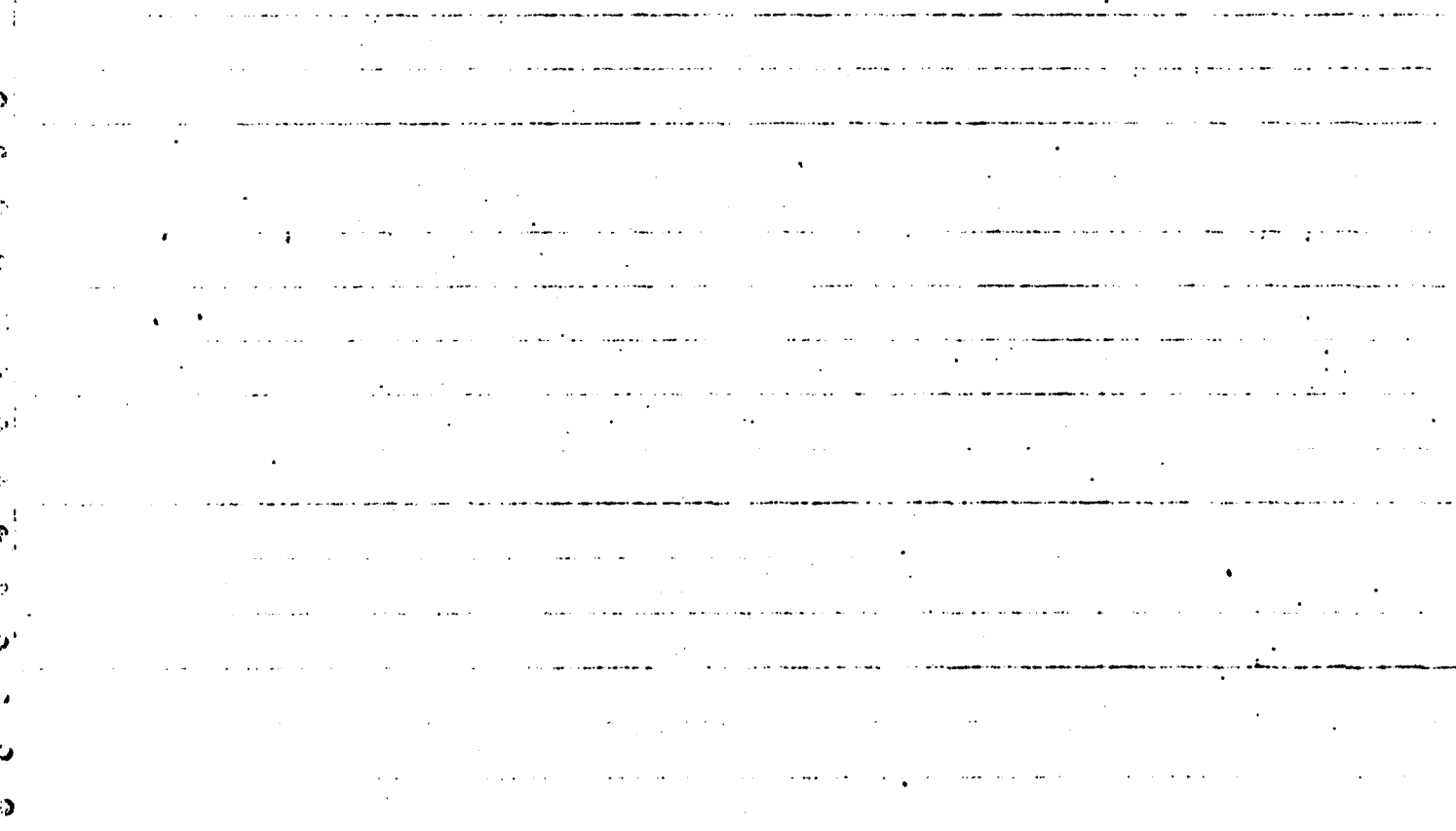
COUNT1 WORD1		HDS WORD LISTING/DESCENDING FREQUENCY		DATE 01149 1635 PAGE 5
	COUNT2 WORD2	COUNT3 WORD3	COUNT4 WORD4	
1 WPKCKE	1 XI	1 XIV	1 XVI	
1 XNII	1 XXIX	1 XXV	1 ZIRI	

1 WPKCKE  
1 XNII

1 XI  
1 XXIX

1 XIV  
1 XXV

1 XVI  
1 ZIRI



**HEADQUARTERS**  
**UNITED STATES ARMY TRAINING AND DOCTRINE COMMAND**  
**FORT MONROE, VIRGINIA 23651**

DATA CONTROL NUMBER             
ISS 80 / PROJECT 80



Word Frequency Analysis  
NOB: 63W  
Skill Level 2

PREPARED BY: OPERATIONS DIV, DPPFO

ATDP FORM 109-1  
Oct 80  
For 80 edition may be used until exhausted.

COPIES \_\_\_\_\_ OF \_\_\_\_\_ COPIES

HEADQUARTERS

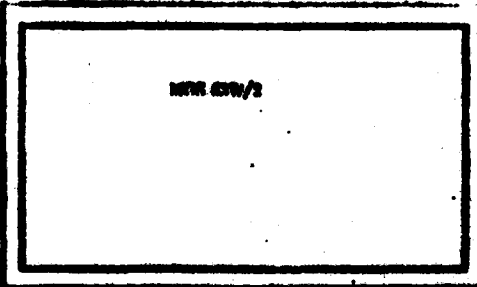
DATA CONTROL NUMBER

JOB NO / PROJECT NO

UNITED STATES ARMY TRAINING AND DOCTRINE COMMAND

FORT MONROE, VIRGINIA 23651

WFA  
JUN 8 1981  
ORAD



MFR 670/2

PREPARED BY: OPERATIONS DIV, SPPD

COPY \_\_\_\_\_ OF \_\_\_\_\_ COPIES

ATDP FORM 100 Replaces AFHQ 110, Jul 70, when in effect

6302

DATE 01149 1638 PAGE 1

MOS WORD LISTING/ASCENDING SEQUENCE

COUNT1	WORD1	COUNT2	WORD2	COUNT3	WORD3	COUNT4	WORD4
4	=	28	A	14	ARLF	9	ACRSS
20	ACCURANCE	1	ACCUMULATION	8	ACCUMULATOR	1	ACIRN
1	ACTION	7	ADAPTERS	24	ADJUST	4	ADJUSTING
1	ADJUSTMENT	1	ADJUSTMENTS	3	AIDS	12	ATH
9	ALL	127	AND	1	ANGLE	2	ANY
1	APPLICABLE	1	APPLIED	4	ARM	1	ARMMEASURES
1	ARMS	1	ARMY	3	AS	1	ASSEMBLY
2	ASSEMBLIES	59	ASSEMBLY	7	ASSISTANCE	1	ASSOCIATED
3	AT	2	ATTACH	1	ATTACHMENT	1	AUTOMATIC
4	ATLE	7	R	2	PACK	1	BAC-ARACK
1	BACKUP	7	RANK	1	BAR	2	BASH
1	BATTERY	49	RE	1	REFAN	2	BEARING
1	BEARINGS	1	REEN	2	REFINE	1	BETWEEN
2	BLOCK	1	RECKED	1	BODY	4	BOLT
1	BOLTS	18	ROOM	5	BUX	4	BRACKET
1	BRACKETS	14	RRAKE	1	BREAKER	1	BRIDGE
1	BROCK	1	RUFFER	2	BURS	2	PUSHING
3	BUSHINGS	8	RUT	15	BY	7	C
1	CABLE	1	CAN	3	CANSHAFT	14	CAN
2	CAP	1	CAPACITY	2	CAPS	1	CARTERIDGE
6	CASER	2	CARRIAGE	1	CARRIER	7	CHAIN
8	CHAMBER	21	CHAP	14	CHAPTER	2	CHASSIS
15	CHECK	1	CHECKS	1	CHDVE	2	CLAMP
3	CLAMP	1	CLEANING	1	CLEAR	1	CLAMPANCE
1	CLASPS	1	CLIMBER	1	CLOCKWISE	7	CLUTCH
2	CLIMBER	1	CLOCKING	2	CLUMPER	2	CLUTCHING
1	CLIP	1	CO. DEPRESSION	5	CLUMPSOR	2	CLUTCHING
1	CLIPPING	28	CONDITIONS	1	COASTIONS	1	CONTACT
19	CONTROL	3	CONTROLS	2	COOLING	1	CORRECT
1	CONNECTED	1	COUNTERCLOCKWISE	1	COUPLER	1	CORRECT
4	CORPLING	1	COUPLER	1	COUPLER	1	CORRECT
2	CORRECTIVE	1	COUPLER	1	COUPLER	1	CORRECT
4	COUNTERS	4	D	1	COUPLER	1	CORRECT
1	CORRECTIVE	4	D	1	COUPLER	1	CORRECT
1	DEVICE	1	DEPRESS	1	DETECTED	1	CORRECT
2	DIFFERENTIAL	1	DIAL	1	DIAPHRAGM	13	DIESEL
3	DRAIN	2	DISASSEMBLE	16	DISCONNECT	92	DO
4	E	12	DRIVE	1	DRILL	1	DYNAMIC
7	ELECTRICAL	1	EAC	16	DRUM	1	ELEMS
26	ENGINE	8	ELEVATING	2	ED	1	EMDS
1	EQUIPMENT	4	ENTER	1	ENTERING	21	ENVIRONMENT
4	EXTENSION	41	EQUIPMENT	1	EXCHANGE	2	EXHAUST
1	FAN	1	EXTRACTOR	2	F	1	FABRICATED
21	FIELD	3	FAULT	1	FAULTS	1	FELT
2	FINAL	9	FIFTH	1	FIG	1	FELL
1	FLUID	1	FITTING	1	FITTINGS	1	FLOOR
1	FOOT	19	FM	1	FOLLOWER	14	FOLLOWING
8	FORK	1	FOOT	1	FOOT-POUND	32	FOR
1	FPLELY	1	FORKLIFT	9	FORM	1	FRAME
30	FUEL	13	FRON	4	FRONT	2	FT-LB
		1	FULL	2	G	7	GAGE

COUNT1	WORD1	COUNT2	WORD2	MDS WORD LISTING/ASCENDING SEQUENCE COUNTS WORDS	COUNT4	WORD4	DATE 01149 1630 PAGE 2
4	GAP	1	GASKET	28	GAH	1	GFARS
20	GENERAL	1	GIVEN	1	GMC	1	GINNO
10	GIVINOR	1	GLASE	1	GRIVES	1	GUARD
1	GUIDE	1	GUIDES	2	H	1	HAND
1	HANDBRAKE	1	HANDLE	1	HANGLES	1	HAS
16	HAVI	7	HEAD	2	HIGH	1	HN
12	HIEST	2	HOLDING	1	HILE	1	HTRA
1	HISE	1	HUSES	6	HMR	11	HOURS
3	HUSING	2	HUR	16	HYDRAULIC	5	I
6	IDLE	2	IDLER	22	IF	9	II
3	III	85	IN	1	INDICATING	1	INDICATOR
1	INITIALS	1	INJECTION	26	INJECTOR	8	INJECTORS
1	INNER	1	INPUT	1	INSERT	1	INSERTS
5	INSPECT	3	INSPECTION	10	INSTALL	1	INSTALLER
1	INSURING	2	INTAKE	1	INTER-RING	4	IS
1	ITEMS	1	IV	2	J	1	JAHANTS
2	JAW	1	K	2	KIT	8	KNOWLEDGE
1	KNUCKLE	1	LATCH	1	LATERAL	1	LEAK
5	LEVER	1	LIF	13	LIFT	2	LIFTING
1	LIMITER	8	LINES	4	LINKAGE	23	LISTED
1	LEAD	7	LO	2	LOCK	3	LOCKING
1	LOCKOUT	1	LOUSEN	1	LOW	1	LOWER
1	LUBRICATE	26	MAINTENANCE	1	MAKE	1	MAJFUNCTIONS
1	MANAGEMENT	23	MANUAL	1	MANUALS	1	MAST
1	MAVAL	1	MAY	3	MEASURE	16	MEASURES
1	MEASURES	20	MECHANIC'S	1	METER	1	MINERAL
13	MINUTES	1	MINUTES	1	MOTOR	1	MOUNTING
2	MOVE	2	MOVEPENT	2	MULTIPL	34	MUST
1	M51	1	M51-SERIES	1	M51A1	1	M51AIC
2	M520	2	M593	1	M718	1	M80C
2	M820	2	M911	1	NECESSARY	1	NEEPL
1	M9	2	NICKS	1	NIPPLES	1	NO-LJAO
1	NORMAL	8	NOT	22	NOTE	2	NOTFD
2	NOZZLE	2	NUMBER	2	NUT	2	NUTS
1	NOO	3	OBTAIN	36	OF	1	OFF
9	OIL	9	ON	6	ONE	1	ONLY
3	OPERATING	2	OPERATION	25	OR	17	ORDER
1	OUT	1	OUTER	6	PACKING	3	PACKINGS
22	PANA	1	PARTIALLY	13	PARTS	1	PATTERN
2	PERFORMANCE	1	PENCIL	19	PERFORM	19	PERFORMANCE
21	PERFORMED	12	PERFORMING	1	PILOT	2	PIN
2	PINS	5	PISTON	1	PITMAN	1	PLACED
1	PLATE	1	PLATES	2	PLUS	1	PLUNGE
6	PLUNGER	1	POINT	2	POSITION	1	POSSIBLE
4	PINCH	4	PREFORMED	8	PREPARE	2	PRESSURE
1	PREVENTIVE	12	PRIOR	1	PROPER	15	PROVIDED
2	PRY	17	PUMP	9	RACK	1	RACKS
1	RAGA	4	RAGS	1	RAISED	6	RATIO
1	RATION	1	REAR	1	RAMPING	8	REASSEMBLE
1	RECORDED	3	REDUCER	1	REFERENCE	11	REFERENCES

POS WORD LISTING/ASCENDING SEQUENCE

COUNT1 WORD1

COUNT2 WORD2

COUNT3 WORD3

COUNT4 WORD4

4 REINSTALL  
 13 REINIVAL  
 45 REPAIR  
 1 REPLACING  
 1 RESISTANCE  
 15 REVERSE  
 1 ROLLERS  
 3 S  
 1 SCREWS  
 1 SECURE  
 6 SERIES  
 9 SETTING  
 3 SHIPMENT  
 3 SHUTOFF  
 1 SLIGHT  
 2 SOLENOID  
 1 SPECIAL  
 9 SPEED  
 6 SPRING  
 2 START  
 1 STATUS  
 1 STROKE  
 20 SUPERVISION  
 1 SURE  
 12 SYSTEM  
 1 TAKEN  
 1 TAPPETS  
 1 TAX  
 1 TELESCOPIC  
 1 TESTER  
 48 THIS  
 45 TH  
 2 THMS  
 1 TRAIN  
 13 TRIPLESHOOT  
 2 TURN  
 1 UP  
 1 V  
 6 VEHICLE  
 1 WALKING  
 1 WEDGES  
 1 MILL  
 17 WITHIN  
 1 WINDSHAFT  
 2 X

1 RELAPPTED  
 67 RELIEVE  
 68 REPLACE  
 7 REQUIRE  
 1 RETAINERS  
 3 RING  
 2 ROTATE  
 2 SAFETY  
 3 SEAL  
 1 SEMBL  
 2 SERVICE  
 3 SHAFT  
 1 SHIPPER  
 8 SIMILAR  
 1 SNAPRINGS  
 2 SOLVENT  
 1 SPECIFICATION  
 1 SPIRITS  
 3 SPRINGS  
 1 STARTED  
 30 STEERING  
 1 STUO  
 1 SUPPORT  
 8 SWING  
 1 TABLE  
 1 TAMMS  
 74 TASK  
 1 TDC  
 1 TEMPERATURE  
 1 TESTS  
 3 TIME  
 59 TO  
 4 TORQUE  
 9 TRAINING  
 25 TRUCK  
 1 TURNTABLE  
 1 USE  
 1 VACUUM/PRESSURE  
 1 VEHICLES  
 1 WARNING  
 6 WHEEL  
 29 WILL  
 1 WORK  
 2 WORN  
 1 XII  
 2 XAI

43 RELATFD  
 9 RELIUED  
 35 REPLACEMENT  
 28 REQUIRED  
 2 RETAINING  
 3 RUCKER  
 1 RUCUM  
 2 SCRATCHES  
 4 SEALS  
 2 SEPARATE  
 1 SERVICEABLE  
 1 SHAPTS  
 21 SHOP  
 8 SKILLS  
 1 SLEY-JANED  
 1 SPACERS  
 1 SPECIFICATIONS  
 1 SPOOL  
 1 STAND  
 2 STARTING  
 2 STOP  
 3 STUDY  
 1 SUPPORTING  
 1 SWITCH  
 1 TACHOMETER  
 1 TANK  
 9 TASKS  
 1 TEAR  
 1 TERRAIN  
 10 THAT  
 4 TILING  
 2 TOOL  
 1 TORQUE  
 4 TRANSFER  
 2 TUBES  
 1 UNIT  
 15 USING  
 21 VALVE  
 1 VII  
 1 WASHERS  
 1 WHEELS  
 9 WENCH  
 1 WERNING  
 12 WEFCKER  
 1 WILL  
 87 YOU

1 RELIEF  
 1 REMOVING  
 1 REPLACER  
 4 REFRIGIER  
 1 REFRIGIER  
 9 ROD  
 1 RPH  
 6 SCREW  
 20 SEC  
 1 SEQUENCE  
 1 SET  
 1 SHIFT  
 14 SHOLLO  
 2 SLEEVE  
 1 SOLVENT  
 1 SPACER  
 1 SPECIFIED  
 1 SPRAY  
 21 STANDARD  
 1 STATIC  
 3 STORAGE  
 2 SUITABLE  
 1 SUPPORTS  
 1 SYMPL  
 1 TAG  
 1 TAPPET  
 37 TASKS  
 31 TECHNICAL  
 12 TEST  
 109 THE  
 1 TING  
 20 TOOLKIT  
 1 TRACTION  
 9 TRANSMISSION  
 2 TURBOCHARGED  
 2 UNTIL  
 1 UTILITY  
 9 VALVES  
 2 VSI  
 2 VEAR  
 1 WEN  
 48 WITH  
 3 WORKSHEET  
 4 WPECH  
 1 VIII  
 1 YOUR

COUNT1 WORD1

172 AND  
69 REMOVE  
55 REPAIR  
47 RI  
43 RELATED  
36 III  
32 FIR  
28 A  
26 ENGINE  
24 ADJUST  
22 NOTE  
21 FIELD  
21 VALVE  
20 SFC  
19 FM  
17 ORDER  
16 HAVE  
15 CHECK  
15 REPLACEMENT  
14 BRAKE  
14 FOLLOWING  
13 MINUTES  
12 AIR  
12 PRIOR  
11 HOURS  
9 ACCESS  
9 RACK  
9 TASKS  
8 ACCUMULATOR  
8 POK  
8 PLUNGER  
8 SKILLS  
7 B  
7 COLUMN  
7 REQUIRE  
6 IDLE  
6 SCREW  
5 BOX  
5 FORM  
5 LEVER  
4 ARM  
4 B  
4 EXTENSION  
4 LINKAGE  
4 REINSTALL  
4 THROUGH  
3 AS  
3 CAMSHAFT  
3 CURSE  
3 FAULT

MOS WORD LISTING/DESCENDING FREQUENCY  
COUNT2 WORD2 COUNT3 WORD3

109 THE  
68 REPLACE  
51 YOU  
48 THIS  
41 WITH  
34 MUST  
30 LIFT  
28 CONDITIONS  
26 MAINTENANCE  
23 LISTED  
22 PARA  
21 PERFORMED  
20 ACCORDANCE  
20 SUPERVISION  
19 PERFORMANCE  
19 PUMP  
16 HYDRAULIC  
15 LIFT  
15 REVERSE  
14 CAN  
14 SHOULD  
13 PARTS  
12 DRIVE  
12 SYSTEM  
10 GOVERNOR  
9 ALL  
9 REMOVED  
9 TRANSMISSION  
8 BUT  
8 KNOWLEDGE  
8 PREPARE  
8 SWING  
7 BANK  
7 GAGE  
6 ADJUSTING  
6 ONE  
6 SERIES  
5 COMPRESSOR  
5 I  
5 PISTON  
4 AXLE  
4 DETROIT  
4 FRONT  
4 POWER  
4 RESERVOIR  
4 TRANSFER  
3 AT  
3 CLEAN  
3 CAMSHAFT  
3 HOUSING

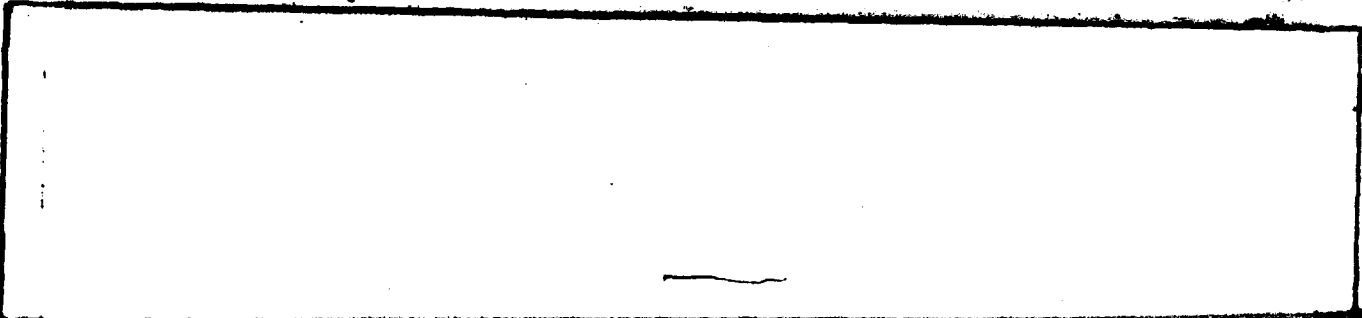
89 IN  
87 YOU  
82 DO  
83 TH  
41 EQUIPMENT  
33 MANUAL  
30 STEERING  
28 GEAR  
26 UR  
23 REQUIRED  
21 CHAP  
21 SHOP  
20 GENERAL  
20 TOOLKIT  
19 WITHIN  
18 DISCONNECT  
16 MEASURES  
15 PERFORM  
15 USING  
14 CHAPTER  
13 DIESEL  
13 REMOVAL  
12 HOIST  
12 TEST  
10 INSTALL  
9 OIL  
9 ROD  
9 VALVES  
8 CHAMBER  
8 LINES  
8 REASSEMBLE  
8 VEHICLE  
7 C  
7 HEAD  
6 CARGO  
6 PACKING  
6 SPRING  
5 DA  
5 IT  
5 SETTING  
4 BRACKET  
4 E  
4 GAP  
4 PERFORMED  
4 SEALS  
4 WRENCH  
3 AT  
3 CLEANING  
3 CRANK  
3 ITT

DATE 01149 1038 PAGE 1  
COUNT4 WORD4

74 TASH  
59 ASSEMBLY  
51 TECHNICAL  
43 CYLINDER  
37 TAPS  
33 REFERENCES  
29 WILL  
28 INJECTOR  
25 TRUCK  
22 IF  
21 ENVIRONMENT  
21 STANDARD  
20 MECHANICS  
19 CONTROL  
18 BODY  
18 EACH  
15 BY  
15 PROVIDED  
14 ANGLE  
14 COVER  
13 FROM  
13 TROUBLESHOOT  
12 PERFORMING  
12 WRENCH  
10 THAT  
9 ON  
9 SPEED  
9 HITCH  
8 ELEVATING  
8 NOT  
8 SIMILAR  
7 ASSISTANCE  
7 CLUTCH  
7 LO  
6 HOUR  
6 RATIO  
6 WHEEL  
5 FIFTH  
5 INSPECT  
4 -  
4 CYLINDERS  
4 ENTER  
4 IS  
4 RAGS  
4 TIMING  
3 AIDS  
3 BUSHINGS  
3 CONTROLS  
3 DRAIN  
3 INJECTORS

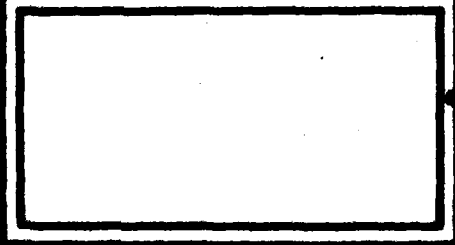
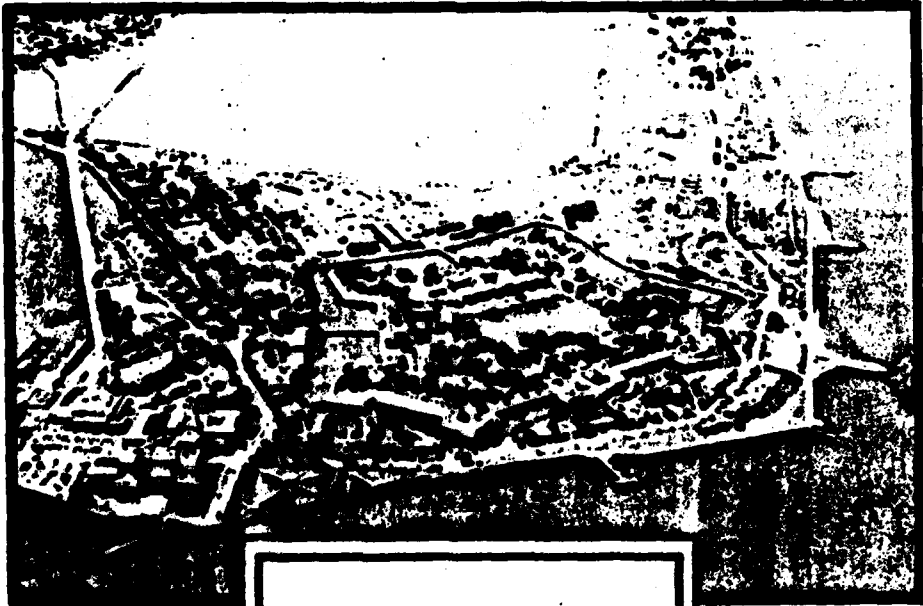
COUNT1	WORD1	COUNT2	WORD2	COUNT3	WORD3	COUNT4	WORD4
3	INSPECTION	3	LOCKING	3	MEASURE	3	OBTAIN
3	IMPLANTING	3	PACKINGS	3	PIER	3	REDUCER
3	MEMO	3	RUCKER	3	S	3	SEAL
3	SHIRT	3	SHIPMENT	3	SHUTOFF	3	SPEAKER
3	STIPEND	3	TIDY	3	TINT	3	TAPPING
3	WIKISHEET	2	ADAPTERS	2	ANY	2	ASSIMILATES
2	ATTACH	2	RACK	2	BASE	2	BEARING
2	BEFORE	2	BLICK	2	BILT	2	BURNS
2	BUSHING	2	CAP	2	CAPS	2	CARRIAGE
2	CHAIN	2	CHASSIS	2	CLAMP	2	CLEVIS
2	COMPLETE	2	COMPLETED	2	CONCENTRICITY	2	COILING
2	DAMAGED	2	DIFFERENTIAL	2	DISASSEMBLE	2	ELECTRICAL
2	END	2	EXHAUST	2	F	2	ETHEL
2	FT-LD	2	G	2	H	2	HIGH
2	HOLDING	2	HUB	2	IDLER	2	INTAKE
2	J	2	JAN	2	KIT	2	LIFTING
2	LOCK	2	MOVE	2	MOVEMENT	2	MULTIFUEL
2	MS20	2	MS53	2	MS80	2	M711
2	NICKS	2	NOTED	2	NOZZLE	2	NUMBER
2	NOY	2	NUTS	2	OPERATION	2	PERFORMANCE
2	PIN	2	PINS	2	PLUG	2	POSITION
2	PRESSURE	2	PRY	2	RETAINING	2	ROTARY
2	SAFETY	2	SCRATCHES	2	SEPARATE	2	SERVICE
2	SLEEVE	2	SOLENOID	2	SOLVENT	2	START
2	STARTING	2	STOP	2	SUITABLE	2	TOOL
2	TOOLS	2	TURES	2	TURBOCHARGED	2	TURM
2	UNTIL	2	WISE	2	WEAR	2	WORN
2	X	2	XI	1	ACCUMULATOR	1	ACORN
1	ACTION	1	ADJUSTMENT	1	ADJUSTMENTS	1	ANGLE
1	APPLICABLE	1	APPLIED	1	ARMMEASURES	1	ARMS
1	ARMY	1	ASSEMBLY	1	ASSOCIATED	1	ATTACHMENT
1	AUTOMATIC	1	BACKPACK	1	BACKUP	1	BAR
1	BATTERY	1	BEAM	1	BEARINGS	1	BEF
1	BETWEEN	1	BLOCKED	1	BODY	1	BOLTS
1	BRACKETS	1	BREAKER	1	BRIDGE	1	BRUSH
1	CABLE	1	CAN	1	CAPACITY	1	CARBURETOR
1	CARRIER	1	CHECKS	1	CHOK	1	CLEAR
1	CLEARANCE	1	CLIPBOARD	1	CLOCKWISE	1	COMPENSING
1	COMPONENT	1	COMPRESSION	1	CONDITION	1	CONTRAINS
1	CONTACT	1	CORRECT	1	CORRECTED	1	COUNTERCLOCKWISE
1	COUPLER	1	COUPLERS	1	CORRECTING	1	COVERALLS
1	CROW	1	DEFECTIVE	1	CORPLING	1	DETECTED
1	DEVICE	1	DIAL	1	DEPRESS	1	DWELL
1	DYNAMIC	1	EAC	1	DIAPHRAGM	1	ENDS
1	ENTERING	1	EQUIPMENT	1	ELONGS	1	EXTRACTOR
1	FABRICATED	1	EQUIPMENT	1	EXCHANGES	1	FELT
1	FIG	1	FAR	1	FAULTS	1	FITTINGS
1	FLOOR	1	FILL	1	FITTING	1	FMT
1	FOOT	1	FLUID	1	FOLLOWER	1	FRAME
1	FREELY	1	FOOT-POUND	1	FORKLIFT	1	GLANS
		1	FULL	1	GASNET		

COUNT1	WORD1	COUNT2	WORD2	COUNT3	WORD3	COUNT4	WORD4
1	GIVEN	1	GMC	1	GOOD	1	GREASE
1	GRINDERS	1	GUARD	1	GUIDE	1	GUIDES
1	HAND	1	HANDRAKE	1	HANDLE	1	HANDLES
1	HAS	1	HIN	1	HOLE	1	HOLE
1	HOSE	1	HUSES	1	INDICATING	1	INDICATOR
1	INITIALS	1	INJECTION	1	INNER	1	INPUT
1	INSERT	1	INSERTS	1	INSTALLER	1	INSULING
1	INTER-RING	1	ITEMS	1	IV	1	JAMMETS
1	K	1	KNUCKLE	1	LATCH	1	LATERAL
1	LEAK	1	LIF	1	LIMITER	1	LEAD
1	LOCKWIT	1	LUOSEN	1	LOW	1	LOWER
1	LURRICATE	1	MAKE	1	MALFUNCTIONS	1	MANAGEMENT
1	MANUALS	1	MAST	1	MAVAL	1	MAY
1	MEASURES	1	METER	1	MINERAL	1	MINUTES
1	MOTOR	1	MOUNTING	1	MIS1	1	MIS1-SERIES
1	MIS111	1	MIS1A1C	1	M710	1	M710
1	NECESSARY	1	NEEDLE	1	NEW	1	NIPPLES
1	NO-LOAD	1	NORMAL	1	N800	1	OFF
1	ONLY	1	OUT	1	OUTER	1	PARTIALLY
1	PATTERN	1	PENCIL	1	PILOT	1	PITMAN
1	PLACED	1	PLATE	1	PLATES	1	PLUG
1	POINT	1	POSSIBLE	1	PREVENTIVE	1	PROPER
1	RACKS	1	RAGA	1	RAISED	1	RATION
1	REARING	1	RECORDED	1	REFERENCE	1	RELAPTED
1	RELIEF	1	REMOVING	1	REPLACER	1	REPLACING
1	RESISTANCE	1	RETAINERS	1	RETIGHTEN	1	ROLLERS
1	ROUGH	1	RPM	1	SCREENS	1	SECURE
1	SEMBLY	1	SEQUENCE	1	SERVICABLE	1	SET
1	SHAFTS	1	SHIFT	1	SHIPPER	1	SLIGHT
1	SHAPINGS	1	SHUT-JAWED	1	SIDNEY	1	SPACERS
1	SPANNER	1	SPECIAL	1	SPECIFICATION	1	SPECIFICATIONS
1	SPECIFIED	1	SPIRITS	1	SPIOL	1	SPRAY
1	STAND	1	STARTED	1	STATIC	1	STATUS
1	STROKE	1	STED	1	SUPPORT	1	SUPPORTING
1	SUPPORTS	1	SURE	1	SWITCH	1	SYMBOL
1	TABLE	1	TACHOMETER	1	TAG	1	TAKEN
1	TAPMS	1	TANK	1	TAPPET	1	TAPPETS
1	TAX	1	TBC	1	TEAR	1	TELESCOPIC
1	TEMPERATURE	1	TERRAIN	1	TESTER	1	TESTS
1	TING	1	TURQUED	1	TRACTION	1	TRAIN
1	TURNTABLE	1	UNIT	1	UP	1	USE
1	UTILITY	1	V	1	VACUUM/PRESSURE	1	VEHICLES
1	VII	1	WALKING	1	WARRANTS	1	WASHERS
1	WEDGES	1	WHEELS	1	WREN	1	WELLS
1	WORK	1	WORKING	1	WORKSHOPT	1	WII
		1	WIII	1	XVIII	1	YOUR



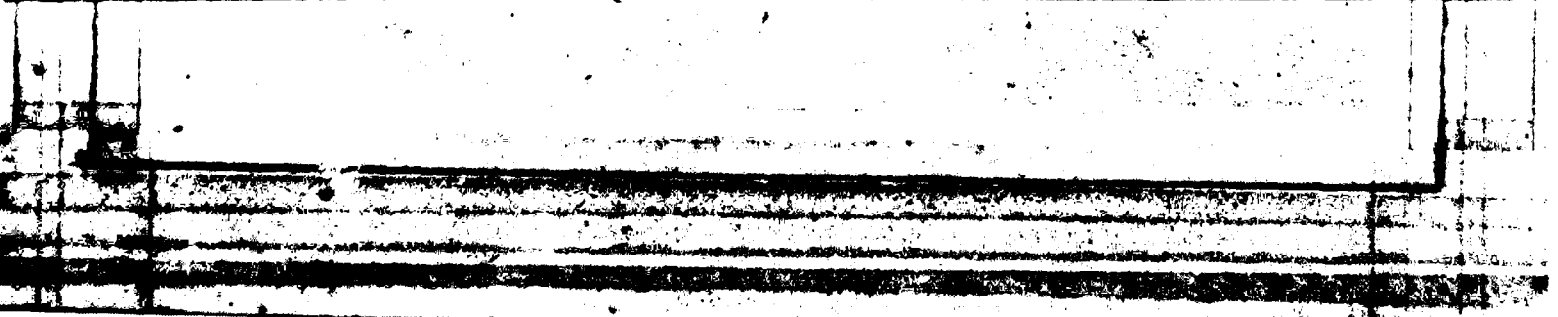
**HEADQUARTERS**  
**UNITED STATES ARMY TRAINING AND DOCTRINE COMMAND**  
**FORT MONROE, VIRGINIA 23651**

DATA CONTROL NUMBER            /             
ADD NO / PROJECT NO



PREPARED BY: OPERATIONS DIV, DPPD  
FORM 100-1  
**ATOP** Pub 20 edition may be used until exhausted.

COPIES        OF        COPIES



END

DATE  
FILMED

8 8 2

D

T