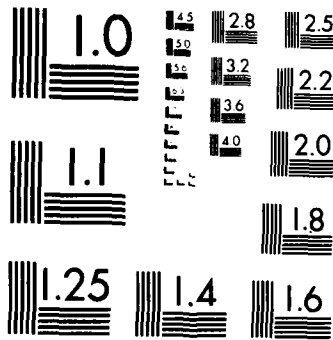




1 OF 1

AD-A117 867



MICROCOPY RESOLUTION TEST CHART  
NATIONAL BUREAU OF STANDARDS-1963 A

THIS REPORT IS UNCLASSIFIED AND  
ITS DISTRIBUTION IS UNLIMITED

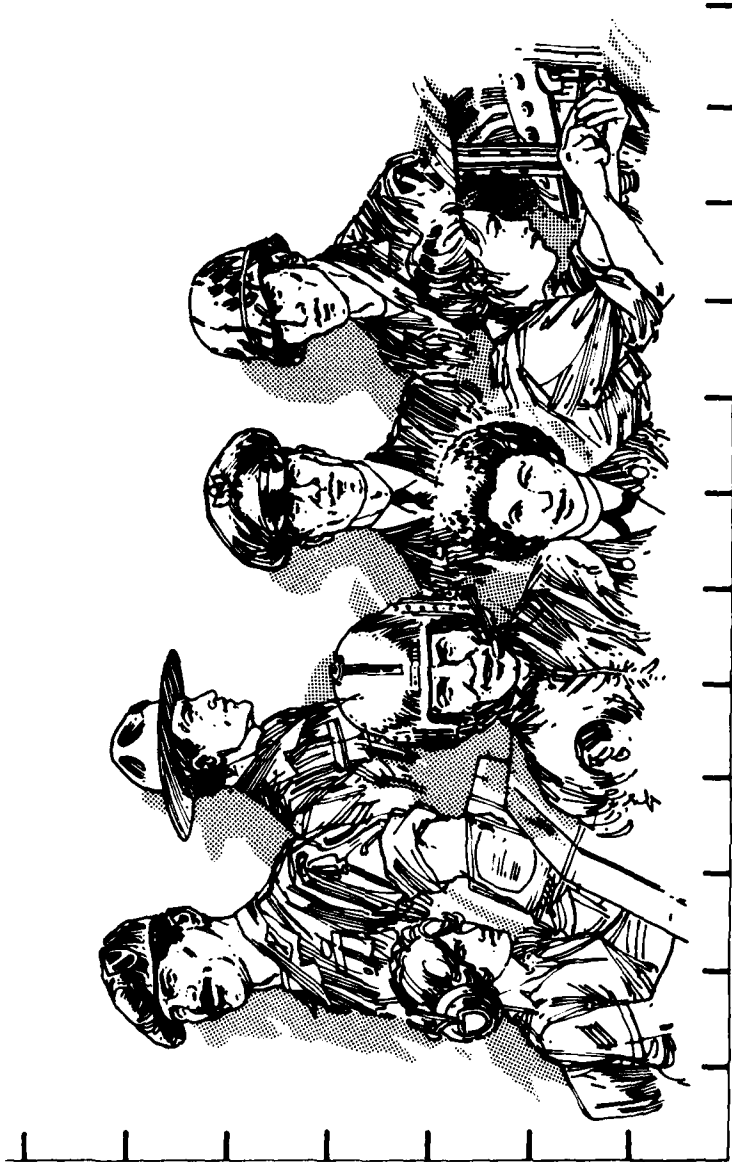
Department of Defense  
**MILITARY MANPOWER STATISTICS**

APRIL 1982



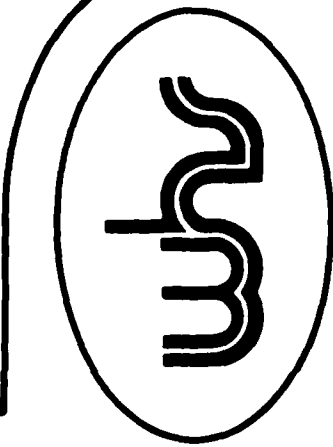


Department of Defense  
**MILITARY MANPOWER STATISTICS**



OSD

WASHINGTON HEADQUARTERS SERVICES



DIRECTORATE FOR INFORMATION  
 OPERATIONS AND REPORTS (DIOR)  
 THE PENTAGON, WASHINGTON, D.C.

## F O R E W O R D

MILITARY MANPOWER STATISTICS (MMS) is a monthly publication prepared by the Washington Headquarters Services, Directorate for Information Operations and Reports (WHS/DIOR) of the Office of the Secretary of Defense.

The MMS report presents audited statistical data pertaining to military personnel on active duty and personnel in military reserve components, for the current fiscal year on a monthly basis. The March, June, September, and December issues contain quarterly summaries of certain military manpower data as annotated in the Table of Contents. Although these tables are revised quarterly, they are published without changes in two subsequent monthly editions of this publication. The publication is generated from a computerized data base developed and maintained by the Manpower Management Information Division of WHS/DIOR.

The report is approved for public release at cost: distribution unlimited. Requests for additional copies and changes in distribution should be addressed to the Director, Information Operations and Reports, WHS, Room 1C535, The Pentagon, Washington, D.C. 20301.

T A B L E O F C O N T E N T S

<u>Section 1</u>	<u>Active Duty Military Manpower Statistics</u>	<u>Page</u>
Table P10	Summary of Military Personnel	3
Table P11	Department of Defense Manpower Comparison	4
Table P22.1	Total Active Duty Military Personnel by Service	5
Table P23.1	Active Duty Officer Personnel and Percent of Total Military Personnel by Service	6
Table P23.3	Total Active Duty Military Personnel by Type	7
Table P23.4	Army Active Duty Military Personnel by Type	8
Table P23.5	Navy Active Duty Military Personnel by Type	9
Table P23.6	Marine Corps Active Duty Military Personnel by Type	10
Table P23.7	Air Force Active Duty Military Personnel by Type	11
Table P23.41	Army Active Duty Military Personnel	12
Table P23.51	Navy Active Duty Military Personnel	13
Table P23.61	Marine Corps Active Duty Military Personnel	14
Table P23.71	Air Force Active Duty Military Personnel	15
Table P25.6	Women Military Personnel on Active Duty Officers and Enlisted by Service	16

<u>Section 1</u>	<u>Active Duty Military Manpower Statistics</u>	<u>Page</u>
Table P26.0	Military Personnel on Active Duty by Grade in Which Serving	17
*Table P26.02	Female Military Personnel on Active Duty by Grade in Which Serving	18
Table P26.04	Military Personnel on Active Duty by Grade in Which Serving - Regular	19
Table P26.05	Military Personnel on Active Duty by Grade in Which Serving - Reserve	20
Table P27.1	Summary of Enlisted Personnel Procurement	21
Table P27.21	Army Enlisted Personnel Procurement	23
Table P27.22	Navy Enlisted Personnel Procurement	25
Table P27.23	Marine Corps Enlisted Personnel Procurement	27
Table P27.24	Air Force Enlisted Personnel Procurement	29
*Table P29.20-29.34	Reenlistment Rates by Service	31
*Table P309A	Active Duty Military Personnel Strength by Regional Area and by Country	34

\* Prepared quarterly, this table is updated in March, June, September and December.

Section 2

Reserve Military Manpower Statistics

	<u>Page</u>
Table R11.0	41
Table R12.0	42
Table R13.0	43
Table R14.0	44
Table R14.0	45
Table R14.0	46
Table R21.0	47
Table R22.0	48
Table R23.0	49
Table R24.0	50
Table R26.5	51
Glossary of Terms	53

Section 1

ACTIVE DUTY MILITARY MANPOWER STATISTICS

TABLE P10  
DEPARTMENT OF DEFENSE  
SUMMARY OF MILITARY PERSONNEL

	TOTAL DOD	ARMY	NAVY	MARINE CORPS	AIR FORCE
1. ACTIVE DUTY MILITARY AS OF 30 APR 1982					
OFFICER	287,348	101,559	66,120	18,638	101,031
ENLISTED	1,805,947	683,302	474,752	172,727	475,166
ACADEMY CADETS	12,820	4,196	4,473	-	4,151
TOTAL ACTIVE DUTY MILITARY	2,106,115	789,057	545,345	191,365	580,348
2. GUARD AND RESERVES AS OF 30 APR 1982					
NATIONAL GUARD IN PAID STATUS	516,515	416,936	-	-	99,579
	504,430	405,015	-	-	99,415
RESERVES IN PAID STATUS	1,724,687	917,608	322,385	104,603	380,094
	435,988	245,586	89,313	37,716	63,373
TOTAL GUARD AND RESERVES IN PAID STATUS	2,241,202	1,334,541	322,385	104,603	959,346
	940,418	650,601	89,313	37,716	325,576
3. OFFICER TRAINING IN COLLEGES A/ AS OF OCTOBER 1981					
	105,725	72,463	8,511	-	24,751

A/ EXCLUDES 186,113 IN JUNIOR DIVISION, MILITARY  
SCHOOLS AND NATIONAL DEFENSE CADETS CORPS.

TABLE P11  
DOD MANPOWER COMPARISON  
(MILITARY & CIVIL FUNCTIONS)

DATE	TOTAL DOD	ARMY			AIR FORCE			NAVY AND MARINE CORPS			A/ OSD/ JCS	
		MILI-TARY	CIVIL-IAN	TOTAL	MILI-TARY	CIVIL-IAN	TOTAL	NAVY MILI-TARY	MARINE CORPS MILI-TARY	B/ CIVIL-IAN		TOTAL
31 OCT 81	3,088,111	782,809	356,078	1,138,887	573,198	237,124	810,322	542,550	191,522	325,056	1,059,128	79,774
30 NOV 81	3,102,801	784,749	359,213	1,143,962	574,250	238,815	813,065	546,709	191,410	327,401	1,065,520	80,254
31 DEC 81	3,102,095	783,621	360,292	1,143,913	574,459	239,794	814,253	544,713	190,239	328,438	1,063,390	80,539
31 JAN 82	3,112,182	787,383	360,279	1,147,662	576,787	239,720	816,507	548,166	191,480	327,918	1,067,564	80,449
28 FEB 82	3,121,743	790,785	361,468	1,152,253	578,845	241,267	820,112	547,035	192,529	328,766	1,068,330	81,048
31 MAR 82	3,125,126	791,865	365,301	1,157,166	579,503	241,977	821,480	543,703	191,957	329,375	1,065,035	81,445
30 APR 82	3,128,066	789,057	366,788	1,155,845	580,348	242,896	823,244	545,345	191,365	330,426	1,067,136	81,841

A/ CIVILIAN PERSONNEL. MILITARY PERSONNEL ASSIGNED TO OSD, OJCS AND OTHER DEFENSE ACTIVITIES ARE REPORTED BY THEIR RESPECTIVE SERVICES

B/ -TOTAL PAID EMPLOYEES- AS REPORTED OFFICIALLY TO THE OFFICE OF PERSONNEL MANAGEMENT, EXCLUDES OVERSEAS SUPPORT PERSONNEL (INDIRECT HIRE).

TABLE P22.1

DEPARTMENT OF DEFENSE  
TOTAL ACTIVE DUTY MILITARY PERSONNEL BY SERVICE

DATE	TOTAL DOD	ARMY	NAVY	MARINE CORPS	AIR FORCE
OCT 31, 1981	2,090,079	782,809	542,550	191,522	573,198
NOV 30, 1981	2,097,118	784,749	546,709	191,410	574,250
DEC 31, 1981	2,093,032	783,621	544,713	190,239	574,459
JAN 31, 1982	2,103,816	787,383	548,166	191,480	576,787
FEB 28, 1982	2,109,194	790,785	547,035	192,529	578,845
MAR 31, 1982	2,107,028	791,865	543,703	191,957	579,503
APR 30, 1982	2,106,115	789,057	545,345	191,365	580,348

TABLE P23.1

DEPARTMENT OF DEFENSE  
ACTIVE DUTY OFFICER PERSONNEL AND PERCENT OF TOTAL MILITARY PERSONNEL, BY SERVICE

DATE	TOTAL DOD		ARMY		NAVY		MARINE CORPS		AIR FORCE	
	NUMBER	%	NUMBER	%	NUMBER	%	NUMBER	%	NUMBER	%
OCT 31, 1981	285,600	13.7	101,734	13.0	65,666	12.1	18,302	9.6	99,898	17.4
NOV 30, 1981	285,006	13.6	101,212	12.9	65,629	12.0	18,153	9.5	100,012	17.4
DEC 31, 1981	285,431	13.6	101,408	12.9	65,586	12.0	18,254	9.6	100,183	17.4
JAN 31, 1982	285,903	13.6	101,626	12.9	65,538	12.0	18,240	9.5	100,499	17.4
FEB 28, 1982	286,261	13.6	101,619	12.9	65,606	12.0	18,451	9.6	100,585	17.4
MAR 31, 1982	286,720	13.6	101,699	12.8	65,805	12.1	18,502	9.6	100,714	17.4
APR 30, 1982	287,348	13.6	101,559	12.9	66,120	12.1	18,638	9.7	101,031	17.4

TABLE P23.3

DEPARTMENT OF DEFENSE  
TOTAL ACTIVE DUTY MILITARY PERSONNEL BY TYPE

DATE	OFFICERS	ENLISTED	OFFICER A/ CANDIDATES	TOTAL
OCT 31, 1981	285,600	1,791,174	13,305	2,090,079
NOV 30, 1981	285,006	1,798,856	13,256	2,097,118
DEC 31, 1981	285,431	1,794,406	13,195	2,093,032
JAN 31, 1982	285,903	1,804,849	13,064	2,103,816
FEB 28, 1982	286,261	1,809,926	13,007	2,109,194
MAR 31, 1982	286,720	1,807,388	12,920	2,107,028
APR 30, 1982	287,348	1,805,947	12,820	2,106,115

A/ CONSISTS OF THE FOLLOWING:  
FOR ARMY - CADETS, U. S. MILITARY ACADEMY  
FOR NAVY - MIDSHPMEN, U. S. NAVAL ACADEMY  
FOR AIR FORCE - CADETS, U. S. AIR FORCE ACADEMY

TABLE P23.4

DEPARTMENT OF DEFENSE  
ARMY ACTIVE DUTY MILITARY PERSONNEL BY TYPE

DATE	OFFICERS	ENLISTED	U.S. MILITARY ACADEMY	CADETS	TOTAL
OCT 31, 1981	101,734	676,712		4,363	782,809
NOV 30, 1981	101,212	679,202		4,335	784,749
DEC 31, 1981	101,408	677,900		4,313	783,621
JAN 31, 1982	101,626	681,482		4,275	787,383
FEB 28, 1982	101,619	684,890		4,276	790,785
MAR 31, 1982	101,699	685,948		4,218	791,865
APR 30, 1982	101,559	683,302		4,196	789,057

TABLE P23.5

DEPARTMENT OF DEFENSE  
NAVY ACTIVE DUTY MILITARY PERSONNEL BY TYPE

DATE	OFFICERS	ENLISTED	MIDSHIPMEN		TOTAL
			U.S. NAVAL	ACADEMY	
OCT 31, 1981	65,666	472,328	4,556		542,550
NOV 30, 1981	65,629	476,529	4,551		546,709
DEC 31, 1981	65,586	474,576	4,551		544,713
JAN 31, 1982	65,538	478,078	4,550		548,166
FEB 28, 1982	65,606	476,880	4,549		547,035
MAR 31, 1982	65,805	473,361	4,537		543,703
APR 30, 1982	66,120	474,752	4,473		545,345

TABLE P23.6

DEPARTMENT OF DEFENSE  
MARINE CORPS ACTIVE DUTY MILITARY PERSONNEL BY TYPE

DATE	OFFICERS	ENLISTED	TOTAL
OCT 31, 1981	18,302	173,220	191,522
NOV 30, 1981	18,153	173,257	191,410
DEC 31, 1981	18,254	171,985	190,239
JAN 31, 1982	18,240	173,240	191,480
FEB 28, 1982	18,451	174,078	192,529
MAR 31, 1982	18,502	173,455	191,957
APR 30, 1982	18,638	172,727	191,365

TABLE P23.7

DEPARTMENT OF DEFENSE  
AIR FORCE ACTIVE DUTY MILITARY PERSONNEL BY TYPE

DATE	OFFICERS	ENLISTED	CADETS U.S.A.F ACADEMY	TOTAL
OCT 31, 1981	99,898	468,914	4,386	573,198
NOV 30, 1981	100,012	469,868	4,370	574,250
DEC 31, 1981	100,183	469,945	4,331	574,459
JAN 31, 1982	100,499	472,049	4,239	576,787
FEB 28, 1982	100,585	474,078	4,182	578,845
MAR 31, 1982	100,714	474,624	4,165	579,503
APR 30, 1982	101,031	475,166	4,151	580,348

TABLE P23.41

DEPARTMENT OF DEFENSE  
ARMY ACTIVE DUTY MILITARY PERSONNEL

REPORTED STRENGTH, AND ADJUSTMENTS TO REPORTED STRENGTH TO DERIVE "DIRECT PROGRAM STRENGTH" CHARGEABLE TO APPROPRIATION "MILITARY PERSONNEL, ARMY"

DATE	REPORTED STRENGTH		A/ EXCLUDABLES		(LESS) REIMBURSABLES		DIRECT PROGRAM STRENGTH CHARGEABLE TO APPROPRIATION "MILITARY PERSONNEL, ARMY"			CADETS USMA	
	TOTAL	OFF	ENL	OFF	ENL	TOTAL	OFFICER	ENLISTED	OFFICER	ENLISTED	
31 OCT 1981	782,809	378	3	368	134	781,926	100,988	676,575	100,988	676,575	4,363
30 NOV 1981	784,749	378	3	355	131	783,862	100,479	679,068	100,479	679,068	4,335
31 DEC '81	783,621	374	2	349	130	782,766	100,685	677,768	100,685	677,768	4,313
31 JAN 1982	787,383	371	4	352	133	786,523	100,903	681,345	100,903	681,345	4,275
28 FEB 1982	790,785	377	4	362	140	789,902	100,880	684,746	100,880	684,746	4,276
31 MAR 1982	791,865	378	3	357	141	790,986	100,964	685,804	100,964	685,804	4,218
30 APR 1982	789,057	367	6	358	139	788,187	100,834	683,157	100,834	683,157	4,196

A/ ACTIVE DUTY PERSONNEL PAID BY AN APPROPRIATION OTHER THAN MILITARY PERSONNEL, ARMY, AND EXCLUDED FROM THE END STRENGTH OF THE ARMY. COMPRISED OF CIVIL WORKS PERSONNEL, AND USAR AND ARNG PERSONNEL ON STATUTORY TOURS.

TABLE P23.51

DEPARTMENT OF DEFENSE  
NAVY ACTIVE DUTY MILITARY PERSONNEL

REPORTED STRENGTH, AND ADJUSTMENTS TO REPORTED STRENGTH TO DERIVE "DIRECT PROGRAM STRENGTH" CHARGEABLE TO APPROPRIATION "MILITARY PERSONNEL, NAVY"

DATE	REPORTED STRENGTH	PAID FROM A/ RES PERS APPN	TOTAL	OFF	ENL	(LESS)		TOTAL	OFFICER	ENLISTED	DIRECT PROGRAM STRENGTH CHARGEABLE TO APPROPRIATION "MILITARY PERSONNEL, NAVY"		OFFICER CANDIDATES
						REIMBURSABLES	ENLISTED				OFFICER	ENLISTED	
31 OCT 1981	542,550	-	542,550	221	-	403	1,215	540,711	65,042	471,113	65,042	471,113	4,556
30 NOV 1981	546,709	-	546,709	222	-	404	1,198	544,885	65,003	475,331	65,003	475,331	4,551
31 DEC 1981	544,713	63	544,713	221	63	405	1,212	542,812	64,960	473,301	64,960	473,301	4,551
31 JAN 1982	548,166	-	548,166	217	-	414	1,232	546,303	64,907	476,846	64,907	476,846	4,550
28 FEB 1982	547,035	-	547,035	217	-	412	1,241	545,165	64,977	475,639	64,977	475,639	4,549
31 MAR 1982	543,703	-	543,703	217	-	414	1,241	541,831	65,174	472,120	65,174	472,120	4,537
30 APR 1982	545,345	-	545,345	217	-	416	1,244	543,468	65,487	473,508	65,487	473,508	4,472

A/ NAVAL RESERVE PERSONNEL ON ACTIVE DUTY UNDER PROVISIONS OF SEC. 265, TITLE 10, U.S. CODE PAID FROM THE NAVAL RESERVE PERSONNEL APPROPRIATION.

TABLE P23.61

DEPARTMENT OF DEFENSE  
MARINE CORPS ACTIVE DUTY MILITARY PERSONNEL

REPORTED STRENGTH, AND ADJUSTMENTS TO REPORTED STRENGTH TO DERIVE "DIRECT PROGRAM STRENGTH" CHARGEABLE TO APPROPRIATION "MILITARY PERSONNEL, MARINE CORPS"

DATE	REPORTED STRENGTH	PAID FROM A/ RES PERS APPN	TOTAL	(LESS)		TOTAL	DIRECT PROGRAM STRENGTH CHARGEABLE TO APPN. "MILITARY PERSONNEL, MARINE CORPS"		OFFICER CANDIDATES
				OFFICER	ENLISTED		OFFICER	ENLISTED	
31 OCT 1981	191,522	105	191,392	24	1	191,392	18,173	173,219	-
30 NOV 1981	191,410	105	191,248	26	31	191,248	18,022	173,226	-
31 DEC 1981	190,239	104	190,079	26	30	190,079	18,124	171,955	-
31 JAN 1982	191,480	140	191,286	26	28	191,286	18,074	173,212	-
28 FEB 1982	192,529	129	192,347	28	25	192,347	18,294	174,053	-
31 MAR 1982	191,957	92	191,812	28	25	191,812	18,382	173,430	-
30 APR 1982	191,365	91	191,222	27	25	191,222	18,520	172,702	-

A/ MARINE CORPS RESERVE PERSONNEL ON ACTIVE DUTY UNDER PROVISIONS OF SEC. 265, TITLE 10, U.S. CODE PAID FROM THE MARINE CORPS RESERVE PERSONNEL APPROPRIATION.

TABLE P23.71

DEPARTMENT OF DEFENSE  
AIR FORCE ACTIVE DUTY MILITARY PERSONNEL

REPORTED STRENGTH, AND ADJUSTMENTS TO REPORTED STRENGTH TO DERIVE "DIRECT PROGRAM STRENGTH" CHARGEABLE TO APPROPRIATION "MILITARY PERSONNEL, AIR FORCE"

DATE	REPORTED STRENGTH	ANG/AFR	OFF	ENL	TOTAL	(LESS) REIMBURSABLES	OFFICER	ENLISTED	TOTAL	OFFICER	ENLISTED	USAF & AVCADS
31 OCT 1981	573,198		290	-								
30 NOV 1981	574,250		297	-								
31 DEC 1981	574,459		296	-								
31 JAN 1982	576,787		293	-								
28 FEB 1982	578,845		293	-								
31 MAR 1982	579,503		294	-								
30 APR 1982	580,348		303	-								

TABLE P25.6

DEPARTMENT OF DEFENSE  
WOMEN MILITARY PERSONNEL ON ACTIVE DUTY, OFFICERS, AND ENLISTED BY SERVICE

DATE	TOTAL DOD			ARMY			NAVY			MARINE CORPS			AIR FORCE		
	TOTAL	OFF	ENL AND OFF CAND	TOTAL	OFF	ENL	TOTAL	OFF	ENL AND OFF CAND	TOTAL	OFF	ENL	TOTAL	OFF	ENL
31 OCT 81	185,899	23,573	162,326	73,983	8,364	65,619	40,354	5,409	34,945	7,703	495	7,208	63,859	9,305	54,554
30 NOV 81	187,757	23,802	163,955	74,542	8,415	66,127	41,163	5,406	35,757	7,823	520	7,303	64,229	9,461	54,768
31 DEC 81	187,803	23,909	163,894	74,690	8,496	66,194	41,180	5,435	35,745	7,770	517	7,253	64,163	9,461	54,702
31 JAN 82	190,075	24,142	165,933	75,566	8,559	67,007	42,070	5,457	36,613	8,019	540	7,479	64,420	9,586	54,834
28 FEB 82	191,097	24,210	166,887	76,067	8,595	67,472	42,289	5,460	36,829	8,120	540	7,580	64,621	9,615	55,006
31 MAR 82	191,340	24,311	167,029	76,190	8,633	67,557	42,340	5,500	36,840	8,104	540	7,564	64,706	9,638	55,068
30 APR 82	190,386	24,429	165,957	75,232	8,640	66,592	42,348	5,585	36,763	8,077	538	7,539	64,729	9,666	55,063

TABLE P26.0

DEPARTMENT OF DEFENSE  
MILITARY PERSONNEL ON ACTIVE DUTY BY GRADE IN WHICH SERVING A/  
APRIL 30, 1982

RANK/GRADE	ARMY	NAVY	MARINE CORPS	AIR FORCE	TOTAL DOD
GENERAL OF ARMY - FLEET ADMIRAL	-	-	-	-	-
GENERAL - ADMIRAL	9	9	2	13	33
LT GENERAL - VICE ADMIRAL	43	30	7	34	114
MAJ GENERAL - REAR ADMIRAL (U)	147	79	23	121	370
BRIG GENERAL - REAR ADMIRAL (L)	198	134	33	169	534
COLONEL - CAPTAIN	4,668	3,775	582	5,315	14,340
LIEUTENANT COL - COMMANDER	10,993	7,758	1,518	12,649	32,918
MAJOR - LT COMMANDER	16,069	12,527	3,005	18,236	49,837
CAPTAIN - LIEUTENANT	32,403	18,242	4,836	35,080	90,561
1ST LIEUTENANT - LIEUTENANT (JG)	13,543	10,113	4,208	15,568	43,432
2ND LIEUTENANT - ENSIGN	9,297	10,569	2,939	13,846	36,651
CHIEF WARRANT OFFICER W-4	1,536	504	147	-	2,187
CHIEF WARRANT OFFICER W-3	4,176	992	155	-	5,323
CHIEF WARRANT OFFICER W-2	4,999	1,388	687	-	7,074
WARRANT OFFICER W-1	3,478	-	496	-	3,974
TOTAL OFFICERS	101,559	66,120	18,638	101,031	287,348
E-9	3,900	3,499	1,239	4,729	13,367
E-8	13,663	8,626	3,445	9,557	35,291
E-7	46,817	30,682	8,716	34,500	120,715
E-6	79,323	67,532	14,003	63,448	214,366
E-5	120,475	87,849	26,838	102,529	337,591
E-4	197,684	88,535	31,054	106,146	423,419
E-3	103,630	101,334	43,689	107,962	356,615
E-2	56,250	52,768	26,179	33,231	170,428
E-1	61,560	33,927	15,504	23,064	134,055
TOTAL ENLISTED	683,302	474,752	172,727	475,166	1,805,947
CADETS & MIDSHIPMEN	4,196	4,473	-	4,151	12,820
GRAND TOTAL	789,057	545,345	191,365	580,348	2,106,115

A/ : INCLUDES REIMBURSABLE ACTIVE DUTY  
MILITARY PAY STRENGTHS

TABLE P26.02

DEPARTMENT OF DEFENSE  
FEMALE MILITARY PERSONNEL ON ACTIVE DUTY BY GRADE IN WHICH SERVING A/  
APRIL 30, 1982

RANK/GRADE	ARMY	NAVY	MARINE CORPS	AIR FORCE
GENERAL OF ARMY - FLEET ADMIRAL	-	-	-	-
GENERAL ADMIRAL	-	-	-	-
LT GENERAL - VICE ADMIRAL	-	-	-	-
MAJ GENERAL - REAR ADMIRAL (U)	1	-	-	1
BRIG GENERAL - REAR ADMIRAL (L)	6	2	-	2
COLONEL - CAPTAIN	87	85	4	76
LIEUTENANT COL - COMMANDER	293	270	26	342
MAJOR - LT COMMANDER	883	809	57	716
CAPTAIN - LIEUTENANT	3,646	2,083	137	3,509
1ST LIEUTENANT - LIEUTENANT (JG)	2,041	1,184	150	2,869
2ND LIEUTENANT - ENSIGN	1,544	1,138	137	2,051
CHIEF WARRANT OFFICER W-4	7	3	3	-
CHIEF WARRANT OFFICER W-3	17	5	5	-
CHIEF WARRANT OFFICER W-2	95	6	14	-
WARRANT OFFICER W-1	66	-	5	-
<b>TOTAL OFFICERS</b>	<b>24,429</b>	<b>5,585</b>	<b>538</b>	<b>9,666</b>
E-9	46	3	6	14
E-8	183	35	25	29
E-7	1,232	229	115	177
E-6	6,586	2,051	336	1,002
E-5	29,827	6,109	1,447	10,380
E-4	52,202	8,360	1,757	18,913
E-3	43,846	11,604	1,759	17,301
E-2	16,847	5,032	1,484	3,494
E-1	14,589	3,340	610	3,254
<b>TOTAL ENLISTED</b>	<b>165,458</b>	<b>36,763</b>	<b>7,539</b>	<b>54,564</b>
CADETS & MIDSHIPMEN	1,176	287	-	499
<b>GRAND TOTAL</b>	<b>191,063</b>	<b>42,635</b>	<b>8,077</b>	<b>64,729</b>

A/ INCLUDES REIMBURSABLE ACTIVE DUTY MILITARY PAY STRENGTHS

TABLE P26.04

DEPARTMENT OF DEFENSE  
MILITARY PERSONNEL ON ACTIVE DUTY BY GRADE IN WHICH SERVING

REGULAR A/

APRIL 30, 1982

RANK/GRADE	TOTAL DOD	ARMY	NAVY	MARINE CORPS	AIR FORCE
GENERAL OF ARMY - FLEET ADMIRAL	-	-	-	-	-
GENERAL - ADMIRAL	33	9	9	2	13
LT GENERAL - VICE ADMIRAL	113	42	30	7	34
MAJ GENERAL - REAR ADMIRAL (U)	367	145	79	22	121
BRIG GENERAL - REAR ADMIRAL (L)	531	196	133	33	169
COLONEL - CAPTAIN	13,834	4,502	3,639	568	5,125
LIEUTENANT COL - COMMANDER	30,034	9,801	7,020	1,488	11,725
MAJOR - LT COMMANDER	42,379	12,922	10,829	2,913	15,715
CAPTAIN - LIEUTENANT	53,188	12,933	13,151	4,237	22,867
1ST LIEUTENANT - LIEUTENANT (JG)	14,817	4,959	5,508	2,170	2,180
2ND LIEUTENANT - ENSIGN	9,333	2,996	3,730	874	1,733
CHIEF WARRANT OFFICER W-4	1,760	1,122	493	145	-
CHIEF WARRANT OFFICER W-3	3,286	2,159	985	152	-
CHIEF WARRANT OFFICER W-2	2,962	925	1,351	686	-
WARRANT OFFICER W-1	514	19	-	495	-
TOTAL OFFICERS	173,161	52,730	46,957	13,792	59,682
E-9	13,228	3,898	3,375	1,230	4,725
E-8	34,911	13,657	8,289	3,419	9,546
E-7	119,327	46,798	29,381	8,665	34,483
E-6	210,861	79,318	64,143	13,989	53,411
E-5	332,281	120,464	82,661	26,702	102,464
E-4	416,795	197,650	82,062	31,015	106,068
E-3	341,401	103,598	86,277	43,626	107,900
E-2	159,284	56,214	41,861	28,108	33,101
E-1	125,704	61,376	25,841	15,426	23,061
TOTAL ENLISTED	1,753,802	682,973	423,890	172,180	474,759
REGULAR TOTAL	1,926,963	735,703	470,847	185,972	534,441

A/ REGULAR PLUS RETIRED REGULAR OFFICERS ON ACTIVE DUTY.

TABLE P26.05

DEPARTMENT OF DEFENSE  
MILITARY PERSONNEL ON ACTIVE DUTY BY GRADE IN WHICH SERVING

RESERVE A/

APRIL 30, 1982

RANK/GRADE	TOTAL DOD	ARMY	NAVY	MARINE CORPS	AIR FORCE
GENERAL OF ARMY - FLEET ADMIRAL	-	-	-	-	-
GENERAL - ADMIRAL	-	-	-	-	-
LT GENERAL - VICE ADMIRAL	1	1	-	-	-
MAJ GENERAL - REAR ADMIRAL (U)	3	2	-	1	-
BRIG GENERAL - REAR ADMIRAL (L)	3	2	1	-	-
COLONEL - CAPTAIN	506	166	136	14	190
LIEUTENANT COL - COMMANDER	2,884	1,192	738	30	924
MAJOR - LT COMMANDER	7,458	3,147	1,698	92	2,521
CAPTAIN - LIEUTENANT	37,373	19,470	5,091	599	12,213
1ST LIEUTENANT - LIEUTENANT (JG)	28,615	8,584	4,605	2,038	13,388
2ND LIEUTENANT - ENSIGN	27,318	6,301	6,839	2,365	12,113
CHIEF WARRANT OFFICER W-4	427	414	11	2	-
CHIEF WARRANT OFFICER W-3	2,027	2,017	7	3	-
CHIEF WARRANT OFFICER W-2	4,112	4,074	37	1	-
WARRANT OFFICER W-1	3,460	3,459	-	1	-
TOTAL OFFICERS	114,187	48,829	19,163	4,846	41,349
E-9	139	2	124	9	4
E-8	380	6	337	26	11
E-7	1,388	19	1,301	61	17
E-6	3,505	5	3,389	74	37
E-5	5,400	11	5,188	136	65
E-4	6,624	34	6,473	39	78
E-3	15,214	32	15,057	63	62
E-2	11,144	36	10,907	71	130
E-1	8,351	184	8,086	78	3
TOTAL ENLISTED	52,145	329	50,862	547	407
RESERVE TOTAL	166,332	49,158	70,025	5,393	41,756

A/ INCLUDES RESERVE, NATIONAL GUARD,  
AUS AND AFUS OFFICERS ON ACTIVE  
DUTY.

TABLE P27 1

DEPARTMENT OF DEFENSE  
SUMMARY OF ENLISTED PERSONNEL PROCUREMENT  
FISCAL YEAR 1982

	OCT 1981	NOV 1981	DEC 1981	JAN 1982	FEB 1982	MAR 1982
TOTAL DEPARTMENT OF DEFENSE	54,440	49,492	38,831	55,500	47,681	43,014
INDUCTIONS	-	-	-	-	-	-
FIRST ENLISTMENTS	29,715	26,019	17,723	26,823	24,974	19,644
IMMEDIATE REENLISTMENTS	18,873	17,829	18,214	22,879	17,846	20,089
OTHER REENLISTMENTS	3,880	3,393	2,265	3,552	3,130	2,173
RESERVES TO ACTIVE DUTY A/	1,969	2,241	629	2,246	1,731	1,109
ARMY	21,293	15,909	17,755	20,034	20,662	19,545
INDUCTIONS	-	-	-	-	-	-
FIRST ENLISTMENTS	12,147	8,812	6,680	10,004	11,333	9,378
IMMEDIATE REENLISTMENTS	7,460	5,977	7,695	8,846	7,898	8,992
OTHER REENLISTMENTS	1,630	1,068	1,347	1,084	1,412	1,109
RESERVES TO ACTIVE DUTY	56	52	33	100	19	66
NAVY	12,583	17,493	5,909	14,463	10,874	7,899
INDUCTIONS	-	-	-	-	-	-
FIRST ENLISTMENTS	6,339	8,450	1,753	6,802	4,249	2,588
IMMEDIATE REENLISTMENTS	3,551	5,364	3,291	4,127	3,979	3,981
OTHER REENLISTMENTS	905	1,564	315	1,480	1,011	367
RESERVES TO ACTIVE DUTY	1,788	2,115	550	2,054	1,635	963
MARINE CORPS	6,824	4,840	3,590	5,997	5,365	4,336
INDUCTIONS	-	-	-	-	-	-
FIRST ENLISTMENTS	4,417	3,052	1,761	3,523	3,296	2,296
IMMEDIATE REENLISTMENTS	1,977	1,401	1,543	1,977	1,689	1,667
OTHER REENLISTMENTS	318	321	247	412	315	302
RESERVES TO ACTIVE DUTY	112	66	39	85	65	71
AIR FORCE	13,740	11,240	11,577	15,006	10,780	11,234
INDUCTIONS	-	-	-	-	-	-
FIRST ENLISTMENTS	6,812	5,705	5,529	6,494	6,096	5,382
IMMEDIATE REENLISTMENTS	5,888	5,087	5,685	7,929	4,280	5,448
OTHER REENLISTMENTS	1,027	440	356	576	392	395
RESERVES TO ACTIVE DUTY	13	8	7	7	12	9

A/ INCLUDES NATIONAL GUARD.

TABLE P27.1

DEPARTMENT OF DEFENSE  
SUMMARY OF ENLISTED PERSONNEL PROCUREMENT  
FISCAL YEAR 1982

	APR 1982	MAY 1982	JUN 1982	JUL 1982	AUG 1982	SEP 1982
TOTAL DEPARTMENT OF DEFENSE	39,268					
INDUCTIONS	-					
FIRST ENLISTMENTS	18,783					
IMMEDIATE REENLISTMENTS	16,859					
OTHER REENLISTMENTS	2,086					
RESERVES TO ACTIVE DUTY A/	1,540					
ARMY	14,387					
INDUCTIONS	-					
FIRST ENLISTMENTS	6,651					
IMMEDIATE REENLISTMENTS	7,354					
OTHER REENLISTMENTS	366					
RESERVES TO ACTIVE DUTY	16					
NAVY	9,893					
INDUCTIONS	-					
FIRST ENLISTMENTS	4,760					
IMMEDIATE REENLISTMENTS	2,699					
OTHER REENLISTMENTS	991					
RESERVES TO ACTIVE DUTY	1,443					
MARINE CORPS	3,837					
INDUCTIONS	-					
FIRST ENLISTMENTS	2,257					
IMMEDIATE REENLISTMENTS	1,186					
OTHER REENLISTMENTS	328					
RESERVES TO ACTIVE DUTY	66					
AIR FORCE	11,151					
INDUCTIONS	-					
FIRST ENLISTMENTS	5,115					
IMMEDIATE REENLISTMENTS	5,620					
OTHER REENLISTMENTS	401					
RESERVES TO ACTIVE DUTY	15					

A/ INCLUDES NATIONAL GUARD.

TABLE P27.21

DEPARTMENT OF DEFENSE  
ARMY ENLISTED PERSONNEL PROCUREMENT  
FISCAL YEAR 1982

	OCT 1981	NOV 1981	DEC 1981	JAN 1982	FEB 1982	MAR 1982
TOTAL	21,293	15,909	17,755	20,034	20,662	19,545
REGULAR ENL. AND REENL. - TOTAL	21,237	15,857	17,722	19,934	20,643	19,479
FIRST ENLISTMENTS	12,147	8,812	8,680	10,004	11,333	9,378
REENLISTMENTS - TOTAL	9,090	7,045	9,042	9,930	9,310	10,101
IMMEDIATE REENLISTMENTS	7,460	5,977	7,695	8,846	7,892	8,992
FORMER REGULAR	7,418	5,959	7,672	8,833	7,894	8,988
FORMER RESERVE & N.G.	42	18	23	13	4	4
FORMER INDUCTEE	-	-	-	-	-	-
REENL. OTHER THAN IMMEDIATE	1,630	1,068	1,347	1,084	1,412	1,109
WITHIN 2-90 DAYS AFTER SEPARATION	182	114	118	91	107	61
FORMER REGULAR	39	37	29	16	14	9
FORMER RESERVE & N.G.	137	77	79	65	86	49
FORMER INDUCTEE	6	-	10	10	7	3
FORMER OFFICER	-	-	-	-	-	-
OVER 90 DAYS AFTER SEPARATION	1,448	954	1,229	993	1,305	1,048
INDUCTIONS	-	-	-	-	-	-
RESERVES AND N.G. CALLS	56	52	33	100	19	66

TABLE P27.21

DEPARTMENT OF DEFENSE  
ARMY ENLISTED PERSONNEL PROCUREMENT  
FISCAL YEAR 1982

	APR 1982	MAY 1982	JUN 1982	JUL 1982	AUG 1982	SEP 1982
TOTAL	14,387					
REGULAR ENL. AND REENL. - TOTAL	14,371					
FIRST ENLISTMENTS	6,651					
REENLISTMENTS - TOTAL	7,720					
IMMEDIATE REENLISTMENTS	7,354					
FORMER REGULAR	7,347					
FORMER RESERVE & N.G.	7					
FORMER INDUCTEE	-					
REENL. OTHER THAN IMMEDIATE	366					
WITHIN 2-90 DAYS AFTER SEPARATION	29					
FORMER REGULAR	3					
FORMER RESERVE & N.G.	24					
FORMER INDUCTEE	2					
FORMER OFFICER	-					
OVER 90 DAYS AFTER SEPARATION	337					
INDUCTIONS	-					
RESERVES AND N.G. CALLS	16					

TABLE P27.22

DEPARTMENT OF DEFENSE  
NAVY ENLISTED PERSONNEL PROCUREMENT  
FISCAL YEAR 1982

	OCT 1981	NOV 1981	DEC 1981	JAN 1982	FEB 1982	MAR 1982
TOTAL	12,563	17,493	5,909	14,463	10,874	7,899
REGULAR ENL. AND REENL. - TOTAL	10,795	15,378	5,359	12,409	9,239	6,936
FIRST ENLISTMENTS	6,339	8,450	1,753	6,802	4,249	2,588
REENLISTMENTS - TOTAL	4,456	6,928	3,606	5,607	4,990	4,348
IMMEDIATE REENLISTMENTS	3,551	5,364	3,291	4,127	3,979	3,981
FORMER REGULAR FORMER RESERVE	3,446 105	5,121 243	3,128 163	3,659 268	3,687 292	3,695 286
REENL. OTHER THAN IMMEDIATE	905	1,564	315	1,480	1,011	367
WITHIN 2-90 DAYS AFTER SEPARATION	284	463	109	359	199	64
FORMER REGULAR FORMER RESERVE	284 -	463 -	109 -	359 -	199 -	64 -
OVER 90 DAYS AFTER SEPARATION	621	1,101	206	1,121	812	303
INDUCTIONS	-	-	-	-	-	-
RESERVES TO ACTIVE DUTY	1,788	2,115	550	2,054	1,635	963
FIRST ENLISTMENTS REENLISTMENTS REPORTED TO ACTIVE DUTY	163 150 1,475	270 169 1,676	52 93 405	202 124 1,728	133 138 1,364	105 150 708

TABLE P27.22

DEPARTMENT OF DEFENSE  
NAVY ENLISTED PERSONNEL PROCUREMENT  
FISCAL YEAR 1982

	APR 1982	MAY 1982	JUN 1982	JUL 1982	AUG 1982	SEP 1982
TOTAL	9,893					
REGULAR ENL. AND REENL. - TOTAL	8,450					
FIRST ENLISTMENTS	4,760					
REENLISTMENTS - TOTAL	3,690					
IMMEDIATE REENLISTMENTS	2,699					
FORMER REGULAR	2,538					
FORMER RESERVE	161					
REENL. OTHER THAN IMMEDIATE	991					
WITHIN 2-90 DAYS AFTER SEPARATION	161					
FORMER REGULAR	161					
FORMER RESERVE	-					
OVER 90 DAYS AFTER SEPARATION	830					
INDUCTIONS	-					
RESERVES TO ACTIVE DUTY	1,443					
FIRST ENLISTMENTS	-					
REENLISTMENTS	119					
REPORTED TO ACTIVE DUTY	1,324					

TABLE P27.23

DEPARTMENT OF DEFENSE  
MARINE CORPS ENLISTED PERSONNEL PROCUREMENT  
FISCAL YEAR 1982

	OCT 1981	NOV 1981	DEC 1981	JAN 1982	FEB. 1982	MAR 1982
TOTAL	6,824	4,840	3,590	5,997	5,365	4,336
REGULAR ENL. AND REENL. - TOTAL	6,712	4,774	3,551	5,912	5,300	4,265
FIRST ENLISTMENTS	4,417	3,052	1,761	3,523	3,296	2,230
REENLISTMENTS - TOTAL	2,295	1,722	1,790	2,389	2,004	1,969
IMMEDIATE REENLISTMENTS	1,977	1,401	1,543	1,977	1,689	1,667
FORMER REGULAR A/ FORMER RESERVE	1,940	1,363	1,511	1,940	1,655	1,636
FORMER INDUCTEE	37	38	32	37	34	31
REENL. OTHER THAN IMMEDIATE	318	321	247	412	315	302
WITHIN 2-90 DAYS AFTER SEPARATION	60	68	44	51	42	30
FORMER REGULAR	51	61	36	41	34	24
FORMER RESERVE	9	7	7	10	8	6
FORMER INDUCTEE	-	-	1	-	-	-
OVER 90 DAYS AFTER SEPARATION B/	258	253	203	361	273	272
INDUCTIONS	-	-	-	-	-	-
RESERVES TO ACTIVE DUTY	112	66	39	85	65	71
FIRST ENLISTMENTS REENLISTMENTS REPORTED TO ACTIVE DUTY	-	-	-	-	-	-
	112	66	39	85	65	68

A/ INCLUDES EXTENSIONS FOR WHICH REENLISTMENT BONUS IS PAID.  
B/ INCLUDES ENLISTMENTS OF FORMER OFFICERS.

ABLE P27.23

DEPARTMENT OF DEFENSE  
MARINE CORPS ENLISTED PERSONNEL PROCUREMENT  
FISCAL YEAR 1982

	APR 1982	MAY 1982	JUN 1982	JUL 1982	AUG 1982	SEP 1982
TOTAL	3,837					
REGULAR ENL. AND REENL. - TOTAL	3,771					
FIRST ENLISTMENTS	2,257					
REENLISTMENTS - TOTAL	1,514					
IMMEDIATE REENLISTMENTS	1,186					
FORMER REGULAR A/	1,160					
FORMER RESERVE	26					
FORMER INDUCTEE	-					
REENL. OTHER THAN IMMEDIATE	328					
WITHIN 2-90 DAYS AFTER SEPARATION	42					
FORMER REGULAR	35					
FORMER RESERVE	6					
FORMER INDUCTEE	1					
OVER 90 DAYS AFTER SEPARATION B/	286					
INDUCTIONS	-					
RESERVES TO ACTIVE DUTY	66					
FIRST ENLISTMENTS	-					
REENLISTMENTS	5					
REPORTED TO ACTIVE DUTY	61					

A/ INCLUDES EXTENSIONS FOR WHICH REENLISTMENT BONUS IS PAID.

B/ INCLUDES ENLISTMENTS OF FORMER OFFICERS.

TABLE P27.24

DEPARTMENT OF DEFENSE  
AIR FORCE ENLISTED PERSONNEL PROCUREMENT  
FISCAL YEAR 1982

	OCT 1981	NOV 1981	DEC 1981	JAN 1982	FEB 1982	MAR 1982
TOTAL	13,740	11,240	11,577	15,006	10,780	11,234
REGULAR ENL. AND REENL. - TOTAL	13,727	11,232	11,570	14,999	10,768	11,225
FIRST ENLISTMENTS	6,812	5,705	5,529	6,494	6,096	5,382
REENLISTMENTS - TOTAL	6,915	5,527	6,041	8,505	4,672	5,843
IMMEDIATE REENLISTMENTS	5,888	5,087	5,685	7,929	4,280	5,448
FORMER REGULAR FORMER RESERVE & N.G.	5,882	5,083	5,679	7,924	4,279	5,448
	6	4	6	5	1	-
REENL. OTHER THAN IMMEDIATE	1,027	440	356	576	392	395
WITHIN 2-90 DAYS AFTER SEPARATION	-	-	-	-	-	-
FORMER REGULAR FORMER RESERVE & N.G.	-	-	-	-	-	-
OVER 90 DAYS AFTER SEPARATION A/	1,027	440	356	576	392	395
INDUCTIONS	-	-	-	-	-	-
RESERVES & N.G. TO ACTIVE DUTY	13	8	7	7	12	9

A/ INCLUDES ENLISTMENTS OF FORMER COMMISSIONED AND WARRANT OFFICERS.

TABLE P27.24

DEPARTMENT OF DEFENSE  
AIR FORCE ENLISTED PERSONNEL PROCUREMENT  
FISCAL YEAR 1962

	APR 1962	MAY 1962	JUN 1962	JUL 1962	AUG 1962	SEP 1962
TOTAL	11,151					
REGULAR ENL AND REENL. - TOTAL	11,136					
FIRST ENLISTMENTS	5,115					
REENLISTMENTS - TOTAL	6,021					
IMMEDIATE REENLISTMENTS	5,620					
FORMER REGULAR FORMER RESERVE & N.G.	5,613					
	1					
REENL. OTHER THAN IMMEDIATE	401					
WITHIN 2-90 DAYS AFTER SEPARATION	-					
FORMER REGULAR FORMER RESERVE & N.G.	-					
OVER 90 DAYS AFTER SEPARATION A/	401					
INDUCTIONS	-					
RESERVES & N.G. TO ACTIVE DUTY	15					

A/ INCLUDES ENLISTMENTS OF FORMER COMMISSIONED AND WARRANT OFFICERS.

TABLE P25 20-29.34

DEPARTMENT OF DEFENSE  
REENLISTMENT RATES BY SERVICE

	A "UNADJUSTED" REENLISTMENT RATES FOR FIRST-TERM REGULARS				B/ "ADJUSTED" REENLISTMENT RATES FOR FIRST-TERM REGULARS					
	TOTAL DOD	ARMY	NAVY	MARINE CORPS	AIR FORCE	TOTAL DOD	ARMY	NAVY	MARINE CORPS	AIR FORCE
<b>FY 1979</b>										
ELIGIBLES	171,034	62,909	45,204	21,029	41,892	159,988	59,604	44,308	20,925	35,151
REENLISTMENTS	64,001	27,027	16,949	4,107	15,918	54,369	23,714	17,080	4,010	9,565
REENLISTMENT RATE	37.4%	43.0%	37.5%	19.5%	38.0%	34.0%	39.8%	38.5%	19.2%	27.2%
<b>FY 1980</b>										
ELIGIBLES	165,525	50,288	53,670	19,364	42,203	161,232	52,231	51,976	19,575	37,450
REENLISTMENTS	64,762	25,434	19,721	4,493	15,114	61,610	27,370	19,138	4,672	10,430
REENLISTMENT RATE	39.1%	50.6%	36.7%	23.2%	35.8%	38.2%	52.4%	36.8%	23.9%	27.9%
<b>FY 1981</b>										
ELIGIBLES	161,600	38,762	55,107	23,875	43,856	158,676	43,013	53,583	24,120	37,960
REENLISTMENTS	69,435	21,312	22,968	6,340	16,815	67,709	25,563	22,521	6,630	12,995
REENLISTMENT RATE	43.0%	55.0%	41.7%	26.6%	42.9%	42.7%	59.4%	42.0%	27.5%	34.2%
<b>FY 1982 (6 MOS)</b>										
ELIGIBLES	73,168	17,086	22,911	11,255	21,916	61,369	14,638	21,262	9,639	15,830
REENLISTMENTS	42,905	12,277	12,792	4,974	12,862	31,391	9,829	11,361	3,379	6,822
REENLISTMENT RATE	58.6%	71.9%	55.8%	44.2%	58.7%	51.2%	67.1%	53.4%	35.1%	43.1%

TABLE P29.20-29.34

DEPARTMENT OF DEFENSE  
REENLISTMENT RATES BY SERVICE

	A/ "UNADJUSTED" REENLISTMENT RATES FOR TOTAL REGULARS				B/ "ADJUSTED" REENLISTMENT RATES FOR TOTAL REGULARS				REENLISTMENT RATES FOR ARMY INDUCTEES			
	TOTAL DOD	ARMY	NAVY	MARINE CORPS	AIR FORCE	TOTAL DOD	ARMY	NAVY	MARINE CORPS	AIR FORCE	UN- ADJUSTED	AD- JUSTED
FY 1979												
ELIGIBLES	343,032	144,849	74,818	37,016	86,349	322,679	134,924	73,598	36,668	77,489	-	-
REENLISTMENTS	181,338	81,443	35,367	12,396	52,130	162,994	71,505	35,488	12,047	43,954	-	-
REENLISTMENT RATE	52.9%	56.2%	47.3%	33.5%	60.4%	50.5%	53.0%	48.2%	32.9%	56.7%	-	-
FY 1980												
ELIGIBLES	343,425	133,010	86,251	35,032	89,132	334,952	136,721	83,581	34,928	79,722	-	-
REENLISTMENTS	190,260	82,793	41,556	12,388	53,523	183,494	86,494	40,500	12,237	44,263	-	-
REENLISTMENT RATE	55.4%	62.2%	48.2%	35.4%	60.0%	54.8%	63.3%	48.5%	35.0%	55.5%	-	-
FY 1981												
ELIGIBLES	334,048	116,743	94,303	29,453	93,549	331,979	131,957	90,462	29,070	80,490	-	-
REENLISTMENTS	201,527	77,892	51,519	10,517	61,599	200,987	93,105	49,039	10,182	48,661	-	-
REENLISTMENT RATE	60.3%	66.7%	54.6%	35.7%	65.8%	60.5%	70.6%	54.2%	35.0%	60.5%	-	-
FY 1982 (6 MOS)												
ELIGIBLES	167,813	59,242	44,438	18,400	45,683	144,345	55,774	39,644	15,779	33,148	-	-
REENLISTMENTS	122,308	47,055	30,402	10,534	34,317	99,262	43,587	25,892	7,930	21,853	-	-
REENLISTMENT RATE	72.9%	79.4%	68.3%	57.3%	75.1%	68.8%	78.1%	65.3%	50.3%	65.9%	-	-

TABLE P29. 20-29. 34

DEPARTMENT OF DEFENSE  
REENLISTMENT RATES BY SERVICE

	A/ "UNADJUSTED" REENLISTMENT RATES FOR CAREER REGULARS				B/ "ADJUSTED" REENLISTMENT RATES FOR CAREER REGULARS					
	TOTAL DOD	ARMY	NAVY	MARINE CORPS	AIR FORCE	TOTAL DOD	ARMY	NAVY	MARINE CORPS	AIR FORCE
FY 1979										
ELIGIBLES	171,998	81,940	29,614	15,997	44,457	162,691	75,320	29,290	15,743	42,338
REENLISTMENTS	117,337	54,416	18,416	8,291	36,212	108,625	47,791	16,408	8,037	34,389
REENLISTMENT RATE	68.2%	66.4%	62.2%	51.9%	81.5%	66.8%	63.5%	62.8%	51.1%	81.2%
FY 1980										
ELIGIBLES	177,900	82,722	32,581	15,668	46,929	173,720	84,490	31,605	15,353	42,272
REENLISTMENTS	125,498	57,359	21,835	7,895	38,409	121,884	59,124	21,362	7,565	33,833
REENLISTMENT RATE	70.5%	69.3%	67.0%	50.4%	81.8%	70.2%	70.0%	67.6%	49.3%	80.0%
FY 1981										
ELIGIBLES	172,448	77,981	39,196	5,578	49,693	173,303	88,944	36,879	4,950	42,530
REENLISTMENTS	132,092	56,580	28,551	4,177	42,784	133,278	67,542	26,518	3,552	35,666
REENLISTMENT RATE	76.6%	72.6%	72.8%	74.9%	86.1%	76.9%	75.9%	71.9%	71.8%	83.9%
FY 1982 (6 MOS)										
ELIGIBLES	94,645	42,156	21,577	7,145	23,767	82,976	41,136	18,382	6,140	17,318
REENLISTMENTS	79,403	34,778	17,610	5,560	21,455	67,871	33,758	14,531	4,551	15,031
REENLISTMENT RATE	83.9%	82.5%	81.6%	77.8%	90.3%	81.8%	82.1%	79.1%	74.1%	86.8%

A/ "UNADJUSTED REENLISTMENT RATE" - THE RATIO OF TOTAL REENLISTMENTS OCCURRING IN A GIVEN PERIOD TO TOTAL SEPARATIONS ELIGIBLE TO REENLIST IN THE SAME PERIOD, EXPRESSED AS A PERCENTAGE.

B/ "ADJUSTED REENLISTMENT RATE" - THE "UNADJUSTED" RATE ADJUSTED TO EXCLUDE THE EFFECTS OF: (1) EARLY SEPARATIONS FOR IMMEDIATE REENLISTMENTS AND (2) OTHER EARLY DISCHARGES OF ELIGIBLES UNDER EARLY RELEASE PROGRAMS.

TABLE P309A

DEPARTMENT OF DEFENSE  
ACTIVE DUTY MILITARY PERSONNEL STRENGTHS BY REGIONAL AREA AND BY COUNTRY

MARCH 31, 1982

REGIONAL AREA/COUNTRY	TOTAL	ARMY	AIR FORCE	NAVY	MARINE CORPS
TOTAL WORLDWIDE	2,106,925	791,762	579,503	543,703	191,957
ASHORE	1,881,276	791,762	579,503	323,960	186,051
Afloat	225,649	-	-	219,743	5,906
U. S. TERRITORY AND SPECIAL LOCATIONS	1,604,323	531,804	461,524	453,833	157,162
CONTINENTAL U. S.	1,291,609	478,304	422,698	250,365	1,012,42
ALASKA	21,084	8,395	10,939	1,565	195
HAWAII	44,553	17,856	6,252	11,637	8,808
AMERICAN SAMOA	1	1	-	-	-
GUAM	8,878	29	3,943	4,517	389
JOHNSTON ATOLL	115	107	8	-	-
MIDWAY ISLANDS	70	-	-	70	-
PUERTO RICO	3,445	380	45	2,844	176
TRUST TERRITORY OF THE PACIFIC ISLANDS	36	32	4	-	-
U. S. MISCELLANEOUS PACIFIC ISLANDS	2	2	-	-	-
VIRGIN ISLANDS OF THE U. S.	11	9	-	2	-
WAKE ISLAND	6	-	6	-	-
TRANSIENTS	72,689	26,689	17,629	21,019	7,352
Afloat	161,814	-	-	161,814	-
TOTAL FOREIGN COUNTRIES	502,602	259,958	117,979	89,870	34,795
ASHORE	438,767	259,958	117,979	31,941	28,889
Afloat	63,835	-	-	57,929	5,906
(1) WESTERN & SOUTHERN EUROPE	337,073	219,329	80,972	33,127	3,145
AUSTRIA	30	5	1	-	24
BELGIUM*	2,145	1,337	657	119	32
CYPRUS	12	2	1	-	9
DENMARK*	46	4	17	15	10
FINLAND	20	5	2	2	11
FRANCE*	91	37	16	4	34
GERMANY (FED REPUBLIC & WEST BERLIN)*	249,171	211,340	37,408	300	121
GREECE*	3,424	508	2,499	401	16
GREENLAND*	324	6	318	-	-
ICELAND*	2,955	2	1,119	1,712	122
IRELAND	9	1	2	-	6
ITALY*	13,071	4,282	4,366	4,160	263
LUXEMBOURG*	6	-	-	-	6
MALTA	1	1	-	-	-
NETHERLANDS*	2,509	743	1,740	17	9
NORWAY*	202	36	119	29	18
PORTUGAL*	1,468	64	1,070	323	11
SPAIN	8,700	30	5,151	3,332	187



TABLE P309A

DEPARTMENT OF DEFENSE  
ACTIVE DUTY MILITARY PERSONNEL STRENGTHS BY REGIONAL AREA AND BY COUNTRY

MARCH 31, 1982

REGIONAL AREA/COUNTRY	TOTAL	ARMY	AIR FORCE	NAVY	MARINE CORPS
LEBANON	14	3	-	1	10
LIBERIA	27	15	2	4	6
MADAGASCAR	6	-	-	1	5
MALAWI	3	3	-	-	-
MALI	4	-	-	-	4
MAURITIUS	6	-	-	-	6
MOROCCO	42	15	7	3	17
NEPAL	9	2	-	-	7
NIGER	5	-	-	-	5
NIGERIA	17	4	3	-	10
OMAN	7	2	2	1	2
PAKISTAN	23	5	6	-	12
ST. HELENA (INCLUDES ASCENSION ISLAND)	1	-	1	-	-
SAUDI ARABIA	643	274	283	75	11
SENEGAL	12	-	-	2	10
SEYCHELLES	4	-	4	-	-
SOMALIA	10	6	-	-	4
SOUTH AFRICA	18	2	3	2	11
SRI LANKA	8	-	-	3	5
SUDAN	54	45	2	-	7
SYRIA	11	2	-	-	9
TANZANIA, UNITED REPUBLIC OF	7	-	-	-	7
TUNISIA	48	37	1	2	8
UPPER VOLTA	6	-	-	-	6
YEMEN (SANA)	19	10	4	-	5
ZAIRE	22	9	5	-	8
ZAMBIA	4	-	-	-	4
AFLOAT	12,449	-	-	12,395	54
(4) WESTERN HEMISPHERE	20,771	9,045	2,185	7,060	3,481
ANTIGUA	129	-	1	128	-
ARGENTINA	20	4	6	4	6
BAHAMAS, THE	52	12	1	33	6
BARBADOS	9	1	-	1	7
BERMUDA	1,355	-	-	1,268	87
BOLIVIA	11	4	1	-	6
BRAZIL	49	16	7	4	22
CANADA	677	13	249	404	11
CHILE	16	4	1	1	10
COLOMBIA	25	6	5	3	11

36

TABLE P309A

DEPARTMENT OF DEFENSE  
ACTIVE DUTY MILITARY PERSONNEL STRENGTHS BY REGIONAL AREA AND BY COUNTRY  
MARCH 31, 1982

REGIONAL AREA/COUNTRY	TOTAL	ARMY	AIR FORCE	NAVY	MARINE CORPS
COSTA RICA	12	4	-	-	8
CUBA (GUANTANAMO)	2,207	-	-	1,721	486
DOMINICAN REPUBLIC	24	11	2	3	8
ECUADOR	22	8	5	2	7
EL SALVADOR	64	41	1	1	21
GUATEMALA	17	5	1	-	11
GUYANA	4	-	-	-	4
HAITI	9	2	-	-	6
HONDURAS	41	20	12	-	9
JAMAICA	10	-	-	1	9
MEXICO	24	7	5	2	10
NICARAGUA	12	3	1	-	8
PANAMA	10,227	7,862	1,866	333	166
PARAGUAY	12	3	1	1	7
PERU	25	8	6	4	7
SURINAME	2	2	-	-	-
TURKS AND CAICOS ISLANDS	1	-	1	-	-
URUGUAY	12	4	1	1	6
VENEZUELA	29	5	11	6	7
AFLOAT	5,674	-	-	3,139	2,535
(5) ANTARCTICA	78	-	-	78	-
(6) EASTERN EUROPE	186	74	18	4	90
BULGARIA	9	1	2	-	6
CZECHOSLOVAKIA	11	1	3	-	7
GERMAN DEMOCRATIC REPUBLIC	50	44	-	-	6
HUNGARY	12	4	2	-	6
POLAND	19	4	1	-	14
ROMANIA	18	6	1	-	11
UNION OF SOVIET SOCIALIST REPUBLICS	48	7	5	4	32
YUGOSLAVIA	19	7	4	-	8
(7) UNDISTRIBUTED	367	45	54	268	-

NOTE. ASHORE INCLUDES TEMPORARILY SHORE-BASED.

Section 2

RESERVE MILITARY MANPOWER STATISTICS

TABLE R11.0  
 DEPARTMENT OF DEFENSE  
 RESERVE COMPONENT STRENGTH SUMMARY  
 APRIL 30, 1982

RESERVES BY RESERVE CATEGORY			
TYPE OF DUTY	TOTAL	OFFICER	ENLISTED A/
TOTAL	2,241,202	688,869	1,552,333
READY RESERVE NOT ON ACTIVE DUTY	1,344,298	210,361	1,133,937
ACTIVE STATUS	1,335,167	209,669	1,125,498
INACTIVE STATUS B/	9,131	692	8,439
STANDBY RESERVE	55,972	49,357	6,615
ON ACTIVE STATUS	12,988	7,078	5,910
INACTIVE STATUS	42,984	42,279	705
RETIRED - RETIRED STATUS	840,932	429,151	411,781

A/ INCLUDES OFFICER CANDIDATES.  
 B/ INACTIVE NATIONAL GUARD AND REP'S IN NON-PAY STATUS.

RESERVES IN "PAID STATUS"			
SELECTED RESERVE	PAY GROUP	TOTAL	OFFICER ENLISTED
	A, B, C, F, P, T, Q	940,418	131,048
	U, AGR*		809,370

\* FULL-TIME ACTIVE DUTY SUPPORT PERSONNEL

TABLE R12.0

DEPARTMENT OF DEFENSE  
RESERVE STRENGTH - OFFICER AND ENLISTED  
NOT ON ACTIVE DUTY

DATE	TOTAL	OFFICERS	ENLISTED A/
31 OCT 1981	2,225,173	687,476	1,537,697
30 NOV 1981	2,213,028	687,527	1,525,501
31 DEC 1981	2,209,695	687,384	1,522,311
31 JAN 1982	2,210,574	686,743	1,523,831
28 FEB 1982	2,210,666	686,073	1,524,593
31 MAR 1982	2,228,785	688,458	1,540,327
30 APR 1982	2,241,202	688,869	1,552,333

A/ INCLUDES OFFICER CANDIDATES.

TABLE R13.0  
 DEPARTMENT OF DEFENSE  
 READY RESERVE AND ACTIVE DUTY STRENGTH COMPARED TO STATUTORY LIMITATION  
 APRIL 30, 1962

	TOTAL	ON ACTIVE DUTY	NOT ON ACTIVE DUTY
STATUTORY READY RESERVE LIMITATION A/	2,900,000		
DIFFERENCE	1,369,691		
READY RESERVE AND ACTIVE DUTY STRENGTH	1,530,309	167,164	1,363,145
COAST GUARD RESERVE	19,691	844	18,847
DOD RESERVE	1,510,618	166,320	1,344,298
ARMY NATIONAL GUARD B/ ARMY RESERVE	921,157 417,393 503,764	49,146 457 48,689	872,011 416,936 455,075
NAVAL RESERVE	242,716	70,025	172,691
MARINE CORPS RESERVE	100,202	5,393	94,809
AIR FORCE AIR NATIONAL GUARD C/ AIR FORCE RESERVE	246,543 99,830 146,713	41,756 251 41,505	204,787 99,579 105,208

A/ SECTION 205(B), ARMED FORCES RESERVE ACT OF 1952, AS AMENDED.  
 B/ INCLUDES "INACTIVE NATIONAL GUARD" NUMBERING 9,131 AND REP'S NUMBERING 2,790.  
 C/ INCLUDES REP'S IN A NON-PAY STATUS NUMBERING 164.

TABLE R14.0  
 DEPARTMENT OF DEFENSE  
 RESERVE COMPONENT PERSONNEL BY RESERVE CATEGORY  
 NOT ON ACTIVE DUTY

DATE	TOTAL			STANDBY	RETIRED
	TOTAL	READY	STANDBY		
31 OCT 1981	2,225,173	1,317,425	60,352	847,396	
30 NOV 1981	2,213,028	1,311,274	59,262	843,492	
31 DEC 1981	2,209,695	1,309,312	57,170	843,213	
31 JAN 1982	2,210,574	1,308,165	57,746	844,663	
28 FEB 1982	2,210,666	1,311,882	57,017	841,767	
31 MAR 1982	2,228,785	1,330,997	56,331	841,457	
30 APR 1982	2,241,202	1,344,298	55,972	840,932	

TABLE R14.0  
 DEPARTMENT OF DEFENSE  
 RESERVE COMPONENT PERSONNEL BY RESERVE CATEGORY  
 NOT ON ACTIVE DUTY

DATE	TOTAL	READY	STANDBY	RETIRED
31 OCT 1981	687,476	206,817	53,307	427,352
30 NOV 1981	687,527	208,237	51,453	427,837
31 DEC 1981	687,384	208,291	50,716	428,377
31 JAN 1982	686,743	206,547	51,336	428,860
28 FEB 1982	686,073	206,589	50,642	428,742
31 MAR 1982	688,458	209,561	49,782	429,115
30 APR 1982	688,869	210,361	49,357	429,151

TABLE R14.0

DEPARTMENT OF DEFENSE  
RESERVE COMPONENT PERSONNEL BY RESERVE CATEGORY  
NOT ON ACTIVE DUTY

ENLISTED A/

DATE	TOTAL	READY	STANDBY	RETIRED
31 OCT 1981	1,537,697	1,110,608	7,045	420,044
30 NOV 1981	1,525,501	1,103,037	6,809	415,655
31 DEC 1981	1,522,311	1,101,021	6,454	414,836
31 JAN 1982	1,523,631	1,101,618	6,410	415,803
28 FEB 1982	1,524,593	1,105,193	6,375	413,025
31 MAR 1982	1,540,327	1,121,436	6,549	412,342
30 APR 1982	1,552,333	1,133,937	6,615	411,781

A/ INCLUDES OFFICER CANDIDATES.

TABLE R21.0

DEPARTMENT OF DEFENSE  
RESERVE PERSONNEL ON ACTIVE DUTY BY COMPONENT

APRIL 30, 1982

COMPONENT/PERSONNEL	TOTAL	OFFICER	ENLISTED A/
TOTAL DEPARTMENT OF DEFENSE	166,320	114,184	52,136
ARMY - TOTAL	49,146	48,826	320
NATIONAL GUARD OF THE U. S.	457	399	58
ARMY RESERVE	48,689	48,427	262
NAVAL RESERVE	70,025	19,163	50,862
MARINE CORPS RESERVE	5,393	4,846	547
AIR FORCE - TOTAL	41,756	41,349	407
AIR NATIONAL GUARD OF THE U. S.	251	186	65
AIR FORCE RESERVE	41,505	41,163	342

A/ INCLUDES OFFICER CANDIDATES.

TABLE R22.0  
 DEPARTMENT OF DEFENSE  
 RESERVE STRENGTH ON ACTIVE DUTY A/

DATE	TOTAL DOD	ARMY				AIR FORCE		
		NATIONAL GUARD	ARMY RESERVE	NAVAL RESERVE	MARINE CORPS RESERVE	AIR NATIONAL GUARD	AIR FORCE RESERVE	
31 OCT 1981	171,064	559	53,083	69,053	5,408	297	42,564	
30 NOV 1981	172,669	543	53,186	70,084	5,386	266	43,204	
31 DEC 1981	172,325	525	53,134	69,911	5,277	260	43,218	
31 JAN 1982	172,134	549	53,173	70,565	5,209	265	42,373	
28 FEB 1982	169,758	495	51,627	70,434	5,551	254	41,397	
31 MAR 1982	166,260	479	49,255	69,575	5,468	249	41,234	
30 APR 1982	166,320	457	48,689	70,025	5,393	251	41,505	

A/ CONTINUOUS OR EXTENDED ACTIVE DUTY.  
 EXCLUDES ACTIVE DUTY FOR RESERVE TRAINING.

TABLE R23.0

DEPARTMENT OF DEFENSE  
RESERVE PERSONNEL BY COMPONENT AND CATEGORY  
NOT ON ACTIVE DUTY

APRIL 30, 1982

COMPONENT/ PERSONNEL	TOTAL	NAT'L GUARD OF THE U. S. A/	ARMY RESERVE	NAVAL RESERVE	MARINE CORPS RESERVE	AIR B/ NAT'L GUARD OF THE U. S.	AIR FORCE RESERVE
TOTAL	2,241,202	416,936	917,605	322,385	104,603	99,571	380,094
OFFICER	686,869	39,211	298,536	161,536	13,811	12,461	163,314
ENLISTED C/	1,552,333	377,725	619,069	160,849	90,792	87,118	216,780
READY RESERVE	1,344,298	416,936	455,075	172,691	94,809	99,579	105,208
OFFICER	210,361	39,211	92,991	36,023	6,217	12,461	23,458
ENLISTED C/	1,133,937	377,725	362,084	136,668	88,592	87,118	81,750
STANDBY RESERVE	55,972	-	1,996	18,609	1,711	-	33,656
OFFICER	49,357	-	230	17,316	1,553	-	30,258
ENLISTED	6,615	-	1,766	1,293	158	-	3,398
ACTIVE STATUS	12,988	-	1,926	1,280	1,606	-	8,176
OFFICER	7,078	-	161	84	1,450	-	5,383
ENLISTED	5,910	-	1,765	1,196	156	-	2,793
INACTIVE STATUS	42,984	-	70	17,329	105	-	25,480
OFFICER	42,279	-	69	17,232	103	-	24,875
ENLISTED	705	-	1	97	2	-	605
RETIRED RESERVE	840,932	-	460,534	131,085	8,083	-	241,230
OFFICER	429,151	-	205,315	108,197	6,041	-	109,598
ENLISTED	411,781	-	255,219	22,888	2,042	-	131,632

A/ INCLUDES "INACTIVE NATIONAL GUARD" NUMBERING 9,131 TOTAL, 692 OFFICERS, 8,439 ENLISTED

AND RESERVE ENLISTMENT PROGRAM (REPS) IN A NON-PAY STATUS NUMBERING 2,790.

B/ INCLUDES REPS IN A NON-PAY STATUS NUMBERING 164.

C/ INCLUDES OFFICER CANDIDATES.

TABLE R24.0

DEPARTMENT OF DEFENSE  
RESERVE STRENGTH NOT ON ACTIVE DUTY A/

DATE	TOTAL DOD	ARMY				AIR FORCE		
		B/ NATIONAL GUARD	ARMY RESERVE	NAVAL RESERVE	MARINE CORPS RESERVE	AIR NATIONAL GUARD	AIR FORCE RESERVE	
31 OCT 1981	2,225,173	400,780	899,453	333,165	98,363	98,293	395,119	
30 NOV 1981	2,213,028	401,890	894,023	331,172	97,593	98,407	389,943	
31 DEC 1981	2,209,695	404,257	894,061	327,890	96,675	98,646	386,166	
31 JAN 1982	2,210,574	406,825	894,050	328,248	95,753	98,796	386,902	
28 FEB 1982	2,210,666	410,022	897,964	326,017	95,760	98,880	382,023	
31 MAR 1982	2,228,785	413,674	906,521	323,857	103,924	99,406	381,403	
30 APR 1982	2,241,202	416,936	917,605	322,385	104,603	99,579	360,094	

A/ INCLUDES RESERVES ON ACTIVE DUTY  
FOR RESERVE TRAINING PURPOSES.

B/ INCLUDES "INACTIVE" NATIONAL GUARD.

TABLE R26.5

DEPARTMENT OF DEFENSE  
SELECTED RESERVE STRENGTH A/

COMPONENT/ PERSONNEL	OCT 1981	NOV 1981	DEC 1981	JAN 1982	FEB 1982	MAR 1982
TOTAL DOD OFFICERS	906,083	908,061	913,181	918,414	924,081	933,520
ENLISTED	127,714	127,790	128,615	129,207	129,561	130,530
	778,369	780,271	784,566	789,207	794,520	802,990
ARMY NATIONAL GUARD OFFICERS	389,882	391,010	393,121	395,667	399,040	402,465
ENLISTED	38,451	38,400	38,464	38,469	38,437	38,473
	351,431	352,610	354,657	357,198	360,603	363,992
ARMY RESERVE OFFICERS	232,404	233,398	235,722	237,318	238,977	243,093
ENLISTED	44,411	44,649	44,988	45,346	45,510	45,959
	187,993	188,749	190,734	191,972	193,467	197,134
NAVAL RESERVE OFFICERS	86,989	86,522	87,010	87,690	88,043	88,524
ENLISTED	16,328	16,138	16,477	16,711	16,911	17,098
	70,661	70,384	70,533	70,979	71,132	71,426
MARINE CORPS RESERVE OFFICERS	36,971	36,897	36,661	36,717	36,717	37,186
ENLISTED	2,496	2,530	2,523	2,531	2,531	2,718
	34,475	34,467	34,138	34,186	34,186	34,468
AIR NATIONAL GUARD OFFICERS	98,167	98,287	98,507	98,659	98,736	99,224
ENLISTED	12,369	12,397	12,409	12,414	12,418	12,486
	85,798	85,890	86,098	86,245	86,318	86,738
AIR FORCE RESERVE OFFICERS	61,670	61,847	62,160	62,363	62,568	63,028
ENLISTED	13,659	13,676	13,754	13,736	13,754	13,798
	48,011	48,171	48,406	48,627	48,814	49,232

A/ INCLUDES PAY GROUPS A,B,C,F,P,T,Q,U,AGR (FULL-TIME ACTIVE DUTY SUPPORT PERSONNEL)

TABLE R26.5

DEPARTMENT OF DEFENSE  
SELECTED RESERVE STRENGTH A/

COMPONENT/ PERSONNEL	APR 1982	MAY 1982	JUN 1982	JUL 1982	AUG 1982	SEP 1982
TOTAL DOD	940,418					
OFFICERS	131,046					
ENLISTED	809,370					
ARMY NATIONAL GUARD	405,015					
OFFICERS	38,519					
ENLISTED	366,496					
ARMY RESERVE	245,586					
OFFICERS	46,114					
ENLISTED	199,472					
NAVAL RESERVE	89,313					
OFFICERS	17,396					
ENLISTED	71,917					
MARINE CORPS RESERVE	37,716					
OFFICERS	2,716					
ENLISTED	35,000					
AIR NATIONAL GUARD	99,415					
OFFICERS	12,461					
ENLISTED	86,954					
AIR FORCE RESERVE	63,373					
OFFICERS	13,842					
ENLISTED	49,531					

A/ INCLUDES PAY GROUPS A,B,C,F,P,T,Q,U,AGR (FULL-TIME ACTIVE DUTY SUPPORT PERSONNEL)

G L O S S A R Y   O F   T E R M S

Active Duty. Full-time duty in the active service of a uniformed service, including duty on the active list, full-time training duty, annual training duty, and attendance while in the active service, at a school designated as a service school by law or by the Secretary concerned.

Actual Strength. The number of personnel in, or projected to be in, an organization or account at a specified point in time.

Armed Forces of the United States. Includes the Army, Navy, Air Force, Marine Corps, and Coast Guard, and all components thereof.

Assigned Strength. Actual strength of an entire service, not necessarily equal to combined unit actual strengths since individuals may be assigned but not joined.

Authorized Strength. The total strength authorized by Congress (for internal Service applications only). Authorized strength may be used synonymously with documented strength as defined below.

Cadet or Midshipman Enrolled in the Reserve Officers Training Corps (ROTC) Program. A member of the Senior Reserve Officer Training Corps (SROTC) under 10 U.S.C. 2107 for tuition, fees, books, and laboratory expenses.

Continental United States. Unless otherwise qualified, means the 48 contiguous States and the District of Columbia.

Enlisted Member. A person enlisted, enrolled, or conscripted into the military service.

- Enlistment.
- (1) A voluntary entrance into military service under enlisted status, as distinguished from induction through Selective Service.
  - (2) A period of time, contractual or prescribed by law, which enlisted members serve between enrollment and discharge.

Officer. A commissioned or warrant officer.

Reserve Components. The Army National Guard of the United States, Army Reserve, Naval Reserve, Marine Corps Reserve, Air National Guard of the United States, Air Force Reserve, Coast Guard Reserve, and the Reserve Corps of the Public Health Service.

Service Academy Cadet or Midshipman. A person in training at one of the service academies to become a commissioned officer.

Transients. All military members who are not available for duty while executing permanent change of station (PCS) orders. Transients shall comprise all military personnel in a travel, proceed, leave enroute, or temporary duty enroute status on PCS orders to execute an accession, separation, training, operational, or rotational move.

Warrant Officer. A person who holds a commission or warrant in a warrant officer grade.