

AD-A118 786

MILITARY MANPOWER STATISTICS, MAY, FY-82. (U)
WASHINGTON HEADQUARTERS SERVICE (DOD) DIR FOR INFO
OP & RPTS. MAY 82. DIOR/MO3-82/08

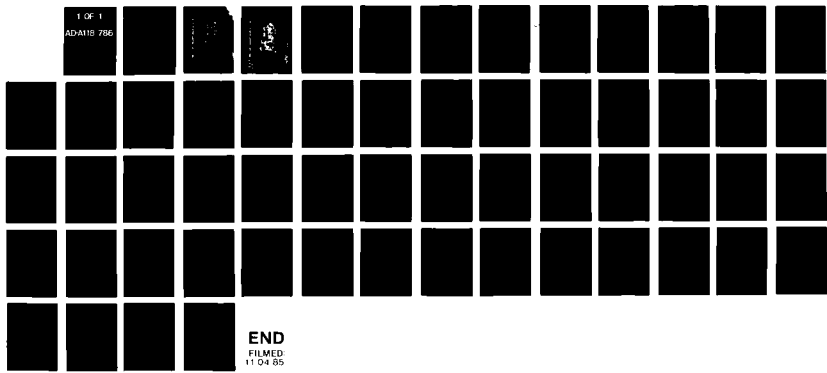
1/1

UNCLASSIFIED

F/G 5/1

N/L

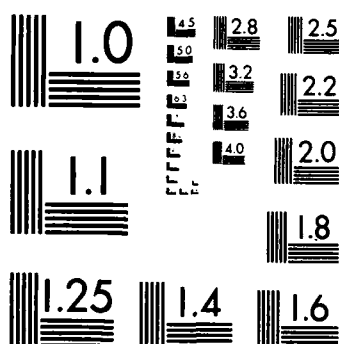
1 OF 1
ADA118 786



END
FILMED
11 04 85

1 OF 1

AD-A118 786



MICROCOPY RESOLUTION TEST CHART
NATIONAL BUREAU OF STANDARDS-1963-A

THIS REPORT IS UNCLASSIFIED AND
ITS DISTRIBUTION IS UNLIMITED



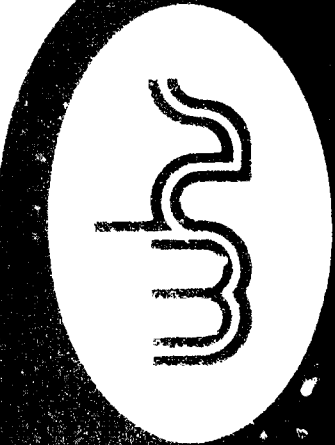
Department of Defense
MILITARY MANPOWER STATISTICS

MAY 1982



OSD

WENT-20-02 ZWEDDDEE-WEN NVE-TLW



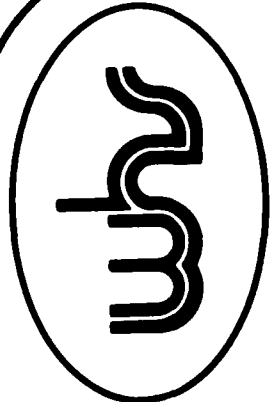
DIRECTORATE FOR INFORMATION
 OPERATIONS AND REPORTS (DIO&R)
 THE PENTAGON, WASHINGTON, D.C.



Department of Defense
MILITARY MANPOWER STATISTICS



OSD WASHINGTON HEADQUARTERS SURVEILLANCE



DIRECTORATE FOR INFORMATION
 OPERATIONS AND REPORTS (DIOAR)
 THE PENTAGON, WASHINGTON, D.C.

F O R E W O R D

MILITARY MANPOWER STATISTICS (MMS) is a monthly publication prepared by the Washington Headquarters Services, Directorate for Information Operations and Reports (WHS/DIOR) of the Office of the Secretary of Defense.

The MMS report presents audited statistical data pertaining to military personnel on active duty and personnel in military reserve components, for the current fiscal year on a monthly basis. The March, June, September, and December issues contain quarterly summaries of certain military manpower data as annotated in the Table of Contents. Although these tables are revised quarterly, they are published without changes in two subsequent monthly editions of this publication. The publication is generated from a computerized data base developed and maintained by the Manpower Management Information Division of WHS/DIOR.

The report is approved for public release at cost: distribution unlimited. Requests for additional copies and changes in distribution should be addressed to the Director, Information Operations and Reports, WHS, Room 1C535, The Pentagon, Washington, D.C. 20301.

T A B L E O F C O N T E N T S

<u>Section 1</u>	<u>Active Duty Military Manpower Statistics</u>	<u>Page</u>
Table P10	Summary of Military Personnel	3
Table P11	Department of Defense Manpower Comparison	4
Table P22.1	Total Active Duty Military Personnel by Service	5
Table P23.1	Active Duty Officer Personnel and Percent of Total Military Personnel by Service	6
Table P23.3	Total Active Duty Military Personnel by Type	7
Table P23.4	Army Active Duty Military Personnel by Type	8
Table P23.5	Navy Active Duty Military Personnel by Type	9
Table P23.6	Marine Corps Active Duty Military Personnel by Type	10
Table P23.7	Air Force Active Duty Military Personnel by Type	11
Table P23.41	Army Active Duty Military Personnel	12
Table P23.51	Navy Active Duty Military Personnel	13
Table P23.61	Marine Corps Active Duty Military Personnel	14
Table P23.71	Air Force Active Duty Military Personnel	15
Table P25.6	Women Military Personnel on Active Duty Officers and Enlisted by Service	16

Section 1

Active Duty Military Manpower Statistics

Page

Table P26.0	Military Personnel on Active Duty by Grade in Which Serving	17
*Table P26.02	Female Military Personnel on Active Duty by Grade in Which Serving	18
Table P26.04	Military Personnel on Active Duty by Grade in Which Serving - Regular	19
Table P26.05	Military Personnel on Active Duty by Grade in Which Serving - Reserve	20
Table P27.1	Summary of Enlisted Personnel Procurement	21
Table P27.21	Army Enlisted Personnel Procurement	23
Table P27.22	Navy Enlisted Personnel Procurement	25
Table P27.23	Marine Corps Enlisted Personnel Procurement	27
Table P27.24	Air Force Enlisted Personnel Procurement	29
*Table P29.20-29.34	Reenlistment Rates by Service	31
*Table P309A	Active Duty Military Personnel Strength by Regional Area and by Country	34

* Prepared quarterly, this table is updated in March, June, September and December.

<u>Section 2</u>	<u>Reserve Military Manpower Statistics</u>	<u>Page</u>
Table R11.0	Reserve Component Strength Summary	41
Table R12.0	Reserve Strength - Officer and Enlisted Not on Active Duty	42
Table R13.0	Ready Reserve and Active Duty Strength Compared to Statutory Limitation	43
Table R14.0	Reserve Component Personnel by Reserve Category Not on Active Duty - Total	44
Table R14.0	Reserve Component Personnel by Reserve Category Not on Active Duty - Officers	45
Table R14.0	Reserve Component Personnel by Reserve Category Not on Active Duty - Enlisted	46
Table R21.0	Reserve Personnel on Active Duty by Component	47
Table R22.0	Reserve Strength on Active Duty	48
Table R23.0	Reserve Personnel by Component and Category Not on Active Duty	49
Table R24.0	Reserve Strength Not on Active Duty	50
Table R26.5	Selected Reserve Strength	51
	Glossary of Terms	53

Section 1

ACTIVE DUTY MILITARY MANPOWER STATISTICS

TABLE P10

DEPARTMENT OF DEFENSE
SUMMARY OF MILITARY PERSONNEL

	TOTAL DOD	ARMY	NAVY	MARINE CORPS	AIR FORCE
1. ACTIVE DUTY MILITARY AS OF 31 MAY 1982					
OFFICER	290,024	103,228	67,067	18,645	101,084
ENLISTED	1,803,003	679,490	475,440	172,470	475,603
ACADEMY CADETS	10,846	3,283	3,460	-	4,103
TOTAL ACTIVE DUTY MILITARY	2,103,873	786,001	545,967	191,115	580,790
2. GUARD AND RESERVES AS OF 31 MAY 1982					
NATIONAL GUARD IN PAID STATUS	517,992	418,118	-	-	59,874
	504,775	405,057	-	-	99,718
RESERVES IN PAID STATUS	1,713,305	920,026	320,923	92,925	379,431
	439,786	248,628	89,607	37,660	63,891
TOTAL GUARD AND RESERVES IN PAID STATUS	2,231,297	1,338,144	320,923	92,925	958,610
	944,561	653,685	89,607	37,660	327,218
3. OFFICER TRAINING IN COLLEGES A/ AS OF OCTOBER 1981					
	105,725	72,463	8,511	-	24,751

A/ EXCLUDES 186,113 IN JUNIOR DIVISION, MILITARY
SCHOOLS AND NATIONAL DEFENSE CADETS CORPS.

TABLE P11
 DOD MANPOWER COMPARISON
 (MILITARY & CIVIL FUNCTIONS)

DATE	TOTAL DOD	ARMY			AIR FORCE			NAVY AND MARINE CORPS			A/ OSD/ JCS	
		MILI-TARY	B/ CIVIL- IAN	TOTAL	MILI-TARY	B/ CIVIL- IAN	TOTAL	NAVY MILI-TARY	MARINE CORPS MILI-TARY	B/ CIVIL- IAN		TOTAL
31 OCT 81	3,088,111	782,809	356,078	1,138,887	573,198	237,124	310,322	542,550	191,522	325,056	1,059,128	79,774
30 NOV 81	3,102,801	784,749	359,213	1,143,962	574,250	236,815	313,065	546,709	191,410	327,401	1,065,520	80,254
31 DEC 81	3,102,095	783,521	360,292	1,143,913	574,459	239,794	314,253	544,713	190,239	328,438	1,063,390	80,539
28 JAN 82	3,112,182	787,383	360,279	1,147,662	576,787	239,720	316,507	548,166	191,480	327,918	1,067,564	80,449
28 FEB 82	3,121,743	790,785	361,468	1,152,253	578,845	241,267	320,112	547,035	192,529	328,766	1,068,330	81,048
31 MAR 82	3,125,126	791,865	365,301	1,157,166	579,503	241,977	321,480	543,703	191,957	329,375	1,065,035	81,445
30 APR 82	3,128,066	789,057	366,788	1,155,845	580,348	242,896	323,244	545,345	191,365	330,426	1,067,136	81,841
31 MAY 82	3,132,216	786,001	370,565	1,156,566	580,790	243,912	324,702	545,967	191,115	331,624	1,068,706	82,242

A/ CIVILIAN PERSONNEL. MILITARY PERSONNEL ASSIGNED TO OSD, OJCS AND OTHER DEFENSE ACTIVITIES ARE REPORTED BY THEIR RESPECTIVE SERVICES.

B/ -TOTAL PAID EMPLOYEES- AS REPORTED OFFICIALLY TO THE OFFICE OF PERSONNEL MANAGEMENT; EXCLUDES OVERSEAS SUPPORT PERSONNEL (INDIRECT HIRE).

TABLE P22.1

DEPARTMENT OF DEFENSE
TOTAL ACTIVE DUTY MILITARY PERSONNEL BY SERVICE

DATE	TOTAL DOD	ARMY	NAVY	MARINE CORPS	AIR FORCE
OCT 31, 1981	2,090,079	782,809	542,550	191,522	573,198
NOV 30, 1981	2,097,118	784,749	546,709	191,410	574,250
DEC 31, 1981	2,093,032	783,621	544,713	190,239	574,459
JAN 31, 1982	2,103,816	787,383	548,166	191,460	576,787
FEB 28, 1982	2,109,194	790,785	547,035	192,529	578,845
MAR 31, 1982	2,107,028	791,865	543,703	191,957	579,503
APR 30, 1982	2,106,115	789,057	545,345	191,365	580,348
MAY 31, 1982	2,103,873	786,001	545,967	191,115	580,790

TABLE P23.1

DEPARTMENT OF DEFENSE
ACTIVE DUTY OFFICER PERSONNEL AND PERCENT OF TOTAL MILITARY PERSONNEL, BY SERVICE

DATE	TOTAL DOD		ARMY		NAVY		MARINE CORPS		AIR FORCE	
	NUMBER	%	NUMBER	%	NUMBER	%	NUMBER	%	NUMBER	%
OCT 31, 1981	285,600	13.7	101,734	13.0	65,666	12.1	18,302	9.6	99,898	17.4
NOV 30, 1981	285,006	13.6	101,212	12.9	65,629	12.0	18,153	9.5	100,012	17.4
DEC 31, 1981	285,431	13.6	101,408	12.9	65,586	12.0	18,254	9.6	100,183	17.4
JAN 31, 1982	285,903	13.6	101,626	12.9	65,538	12.0	18,240	9.5	100,499	17.4
FEB 28, 1982	286,261	13.6	101,619	12.9	65,606	12.0	18,451	9.6	100,585	17.4
MAR 31, 1982	286,720	13.6	101,699	12.8	65,605	12.1	18,502	9.6	100,714	17.4
APR 30, 1982	287,348	13.6	101,559	12.9	66,120	12.1	18,638	9.7	101,031	17.4
MAY 31, 1982	290,024	13.8	103,228	13.1	67,067	12.3	18,645	9.8	101,084	17.4

TABLE P23.3

DEPARTMENT OF DEFENSE
TOTAL ACTIVE DUTY MILITARY PERSONNEL BY TYPE

DATE	OFFICERS	ENLISTED	OFFICER A/ CANDIDATES	TOTAL
OCT 31, 1981	285,600	1,791,174	13,305	2,090,079
NOV 30, 1981	285,006	1,798,856	13,256	2,097,118
DEC 31, 1981	285,431	1,794,406	13,195	2,093,032
JAN 31, 1982	285,903	1,804,849	13,064	2,103,816
FEB 28, 1982	286,261	1,809,926	13,007	2,109,194
MAR 31, 1982	286,720	1,807,388	12,920	2,107,028
APR 30, 1982	287,348	1,805,947	12,820	2,106,115
MAY 31, 1982	290,024	1,803,003	10,846	2,103,873

A/ CONSISTS OF THE FOLLOWING:

FOR ARMY - CADETS, U. S. MILITARY ACADEMY
FOR NAVY - MIDSHIPMEN, U. S. NAVAL ACADEMY
FOR AIR FORCE - CADETS, U. S. AIR FORCE ACADEMY

TABLE P23.4

DEPARTMENT OF DEFENSE
ARMY ACTIVE DUTY MILITARY PERSONNEL BY TYPE

DATE	OFFICERS	ENLISTED	CADETS		TOTAL
			U.S. MILITARY	ACADEMY	
OCT 31, 1981	101,734	676,712	4,363		782,809
NOV 30, 1981	101,212	679,202	4,335		784,749
DEC 31, 1981	101,408	677,900	4,313		783,621
JAN 31, 1982	101,626	681,482	4,275		787,383
FEB 28, 1982	101,619	684,890	4,276		790,785
MAR 31, 1982	101,699	685,948	4,218		791,865
APR 30, 1982	101,559	683,302	4,196		789,057
MAY 31, 1982	103,228	679,490	3,283		786,001

TABLE P23.5

DEPARTMENT OF DEFENSE
NAVY ACTIVE DUTY MILITARY PERSONNEL BY TYPE

DATE	OFFICERS	ENLISTED	MIDSHIPMEN U. S. NAVAL ACADEMY	TOTAL
OCT 31, 1981	65,666	472,328	4,556	542,550
NOV 30, 1981	65,629	476,529	4,551	546,709
DEC 31, 1981	65,586	474,576	4,551	544,713
JAN 31, 1982	65,538	478,078	4,550	548,166
FEB 28, 1982	65,606	476,880	4,549	547,035
MAR 31, 1982	65,805	473,361	4,537	543,703
APR 30, 1982	66,120	474,752	4,473	545,345
MAY 31, 1982	67,067	475,440	3,460	545,967

TABLE P23.6
 DEPARTMENT OF DEFENSE
 MARINE CORPS ACTIVE DUTY MILITARY PERSONNEL BY TYPE

DATE	OFFICERS	ENLISTED	TOTAL
OCT 31, 1981	18,302	173,220	191,522
NOV 30, 1981	18,153	173,257	191,410
DEC 31, 1981	18,254	171,985	190,239
JAN 31, 1982	18,240	173,240	191,480
FEB 28, 1982	18,451	174,078	192,529
MAR 31, 1982	18,502	173,455	191,957
APR 30, 1982	18,638	172,727	191,365
MAY 31, 1982	18,645	172,470	191,115

TABLE P23.7

DEPARTMENT OF DEFENSE
AIR FORCE ACTIVE DUTY MILITARY PERSONNEL BY TYPE

DATE	OFFICERS	ENLISTED	CADETS U.S.A.F. ACADEMY	TOTAL
OCT 31, 1981	99,898	468,914	4,386	573,198
NOV 30, 1981	100,012	469,868	4,370	574,250
DEC 31, 1981	100,183	469,945	4,331	574,459
JAN 31, 1982	100,499	472,049	4,239	576,787
FEB 28, 1982	100,585	474,078	4,182	578,845
MAR 31, 1982	100,714	474,624	4,165	579,503
APR 30, 1982	101,031	475,166	4,151	580,348
MAY 31, 1982	101,084	475,603	4,103	580,790

TABLE P23.41

DEPARTMENT OF DEFENSE
ARMY ACTIVE DUTY MILITARY PERSONNEL

REPORTED STRENGTH, AND ADJUSTMENTS TO REPORTED STRENGTH TO DERIVE "DIRECT PROGRAM STRENGTH" CHARGEABLE TO APPROPRIATION "MILITARY PERSONNEL, ARMY"

DATE	REPORTED STRENGTH		A/ EXCLUDABLES		(LESS) REIMBURSABLES		TOTAL	DIRECT PROGRAM STRENGTH CHARGEABLE TO APPROPRIATION "MILITARY PERSONNEL, ARMY"			CADETS USMA
	TOTAL	ENL	OFF	ENL	OFF	ENL		OFFICER	ENLISTED		
31 OCT 1981	782,809	3	378	3	368	134	781,926	100,988	676,575	4,363	
30 NOV 1981	784,749	3	378	3	355	131	783,882	100,479	679,068	4,335	
31 DEC 1981	783,621	2	374	2	349	130	782,766	100,685	677,768	4,313	
31 JAN 1982	787,383	4	371	4	352	133	786,523	100,903	681,345	4,275	
28 FEB 1982	790,785	4	377	4	362	140	789,902	100,880	684,746	4,276	
31 MAR 1982	791,865	3	378	3	357	141	790,986	100,964	685,604	4,218	
30 APR 1982	789,057	6	367	6	358	139	788,187	100,834	683,157	4,196	
31 MAY 1982	786,001	3	370	3	356	135	785,137	102,502	679,352	3,283	

A/ ACTIVE DUTY PERSONNEL PAID BY AN APPROPRIATION OTHER THAN MILITARY PERSONNEL, ARMY, AND EXCLUDED FROM THE END STRENGTH OF THE ARMY. COMPRISED OF CIVIL WORKS PERSONNEL, AND USAR AND ARNG PERSONNEL ON STATUTORY TOURS.

TABLE P23.51

DEPARTMENT OF DEFENSE
 NAVY ACTIVE DUTY MILITARY PERSONNEL
 REPORTED STRENGTH, AND ADJUSTMENTS TO REPORTED STRENGTH TO DERIVE "DIRECT PROGRAM STRENGTH" CHARGEABLE TO
 APPROPRIATION "MILITARY PERSONNEL, NAVY"

DATE	REPORTED STRENGTH	PAID FROM A/ RES PERS APPN		ENL	(LESS) REIMBURSABLES		TOTAL	DIRECT PROGRAM STRENGTH CHARGEABLE TO APPROPRIATION "MILITARY PERSONNEL, NAVY"		OFFICER CANDIDATES
		OFF	ENL		OFFICER	ENLISTED		OFFICER	ENLISTED	
31 OCT 1981	542,550	221	-	-	403	1,215	540,711	65,042	471,113	4,556
30 NOV 1981	546,709	222	-	-	404	1,198	544,885	65,003	475,331	4,551
31 DEC 1981	544,713	221	63	63	405	1,212	542,812	64,960	473,301	4,551
31 JAN 1982	548,166	217	-	-	414	1,232	546,303	64,907	476,846	4,550
28 FEB 1982	547,035	217	-	-	412	1,241	545,165	64,977	475,639	4,549
31 MAR 1982	543,703	217	-	-	414	1,241	541,831	65,174	472,120	4,537
30 APR 1982	545,345	217	-	-	416	1,244	543,468	65,487	473,508	4,473
31 MAY 1982	545,967	221	-	-	422	1,253	544,071	66,424	474,187	3,460

A/ NAVAL RESERVE PERSONNEL ON ACTIVE DUTY UNDER PROVISIONS OF SEC. 265, TITLE 10, U.S. CODE PAID FROM THE NAVAL RESERVE PERSONNEL APPROPRIATION.

TABLE P23.61

DEPARTMENT OF DEFENSE
MARINE CORPS ACTIVE DUTY MILITARY PERSONNEL

DATE	REPORTED STRENGTH	PAID FROM A/ RES PERS APPN	(LESS)		TOTAL	OFFICER	ENLISTED	TOTAL	OFFICER	ENLISTED	OFFICER	ENLISTED	OFFICER	ENLISTED
			REIMBURSABLES	DIRECT PROGRAM STRENGTH CHARGEABLE TO APPN. "MILITARY PERSONNEL, MARINE CORPS"										
31 OCT 1981	191,522	105	24	1	191,392	18,173	173,219	18,173	173,219	-	-	-	-	-
30 NOV 1981	191,410	105	26	31	191,248	18,022	173,226	18,022	173,226	-	-	-	-	-
31 DEC 1981	190,239	104	26	30	190,079	18,124	171,955	18,124	171,955	-	-	-	-	-
31 JAN 1982	191,480	140	26	28	191,286	18,074	173,212	18,074	173,212	-	-	-	-	-
28 FEB 1982	192,529	129	28	25	192,347	18,294	174,053	18,294	174,053	-	-	-	-	-
31 MAR 1982	191,957	92	28	25	191,812	18,382	173,430	18,382	173,430	-	-	-	-	-
30 APR 1982	191,365	91	27	25	191,222	18,520	172,702	18,520	172,702	-	-	-	-	-
31 MAY 1982	191,115	136	27	25	190,927	18,482	172,445	18,482	172,445	-	-	-	-	-

A/ MARINE CORPS RESERVE PERSONNEL ON ACTIVE DUTY UNDER PROVISIONS OF SEC. 265, TITLE 10, U.S. CODE PAID FROM THE
MARINE CORPS RESERVE PERSONNEL APPROPRIATION.

TABLE P23.71

DEPARTMENT OF DEFENSE
AIR FORCE ACTIVE DUTY MILITARY PERSONNEL

REPORTED STRENGTH, AND ADJUSTMENTS TO REPORTED STRENGTH TO DERIVE "DIRECT PROGRAM STRENGTH" CHARGEABLE TO APPROPRIATION "MILITARY PERSONNEL, AIR FORCE"

DATE	REPORTED STRENGTH	ANG/APR			ENL	(LESS) REIMBURSABLES		TOTAL	DIRECT PROGRAM STRENGTH CHARGEABLE TO APPROP. "MILITARY PERSONNEL, AIR FORCE"		USAF & AVCADS
		OFF	ENL	ENL		OFFICER	ENLISTED		OFFICER	ENLISTED	
31 OCT 1981	573,198	290	-	-							
30 NOV 1981	574,250	297	-	-							
31 DEC 1981	574,459	296	-	-							
31 JAN 1982	576,787	293	-	-							
28 FEB 1982	578,845	293	-	-							
31 MAR 1982	579,503	294	-	-							
30 APR 1982	580,348	303	-	-							
31 MAY 1982	580,790	298	-	-							

TABLE P25.6

DEPARTMENT OF DEFENSE
WOMEN MILITARY PERSONNEL ON ACTIVE DUTY, OFFICERS, AND ENLISTED BY SERVICE

DATE	TOTAL DOD			ARMY			NAVY			MARINE CORPS			AIR FORCE		
	TOTAL	OFF	ENL AND OFF CAND	TOTAL	OFF	ENL	TOTAL	OFF	ENL AND OFF CAND	TOTAL	OFF	ENL	TOTAL	OFF	ENL
31 OCT 81	186,899	23,573	162,326	73,983	8,364	65,619	40,354	5,409	34,945	7,703	495	7,208	63,859	9,305	54,554
31 NOV 81	167,757	23,602	163,956	74,542	8,415	66,127	41,163	5,406	35,757	7,823	520	7,303	64,229	9,461	54,768
31 DEC 81	187,803	23,908	163,894	74,690	8,496	66,194	41,180	5,435	35,745	7,770	517	7,253	64,163	9,461	54,702
31 JAN 82	190,075	24,142	165,933	75,566	8,559	67,007	42,070	5,457	36,613	8,019	540	7,479	64,420	9,586	54,834
28 FEB 82	191,097	24,210	166,887	76,067	8,595	67,472	42,289	5,460	36,828	8,120	540	7,580	64,621	9,615	55,006
31 MAR 82	191,340	24,311	167,029	76,190	8,633	67,557	42,340	5,500	36,840	8,104	540	7,564	64,706	9,638	55,068
31 APR 82	190,386	24,429	165,957	75,232	8,640	66,592	42,348	5,585	36,763	8,077	538	7,539	64,729	9,666	55,063
31 MAY 82	189,523	24,686	164,837	74,773	8,873	65,900	42,512	5,632	36,880	8,035	540	7,495	64,203	9,641	54,562

TABLE P26.0

DEPARTMENT OF DEFENSE
MILITARY PERSONNEL ON ACTIVE DUTY BY GRADE IN WHICH SERVING A/
MAY 31, 1962

RANK/GRADE	ARMY	NAVY	MARINE CORPS	AIR FORCE	TOTAL DOD
GENERAL OF ARMY - FLEET ADMIRAL	-	-	-	-	-
GENERAL - ADMIRAL	9	9	2	13	33
LT GENERAL - VICE ADMIRAL	43	30	7	34	114
MAJ GENERAL - REAR ADMIRAL (U)	147	79	23	121	370
BRIG GENERAL - REAR ADMIRAL (L)	198	134	33	169	534
COLONEL - CAPTAIN	4,657	3,771	582	5,345	14,355
LIEUTENANT COL - COMMANDER	10,995	7,755	1,525	12,649	32,924
MAJOR - LT COMMANDER	16,011	12,605	2,998	18,351	49,965
CAPTAIN - LIEUTENANT	32,254	18,439	4,853	35,961	91,507
1ST LIEUTENANT - LIEUTENANT (JG)	13,556	11,368	4,137	15,597	44,658
2ND LIEUTENANT - ENSIGN	11,091	10,021	3,006	12,844	36,962
CHIEF WARRANT OFFICER W-4	1,526	498	145	-	2,169
CHIEF WARRANT OFFICER W-3	4,187	1,358	152	-	5,697
CHIEF WARRANT OFFICER W-2	5,038	1,000	686	-	6,724
WARRANT OFFICER W-1	3,516	-	496	-	4,012
TOTAL OFFICERS	103,228	67,067	18,645	101,084	290,024
E-9	3,889	3,534	1,234	4,727	13,384
E-8	13,704	8,566	3,433	9,617	35,320
E-7	46,947	30,463	9,710	34,478	120,598
E-6	79,126	67,607	14,247	53,589	214,569
E-5	119,818	88,240	26,923	102,151	337,132
E-4	195,689	89,133	32,399	105,620	422,841
E-3	107,049	102,821	42,961	109,964	362,795
E-2	56,728	53,365	27,847	33,360	171,300
E-1	56,540	31,711	14,716	22,097	125,064
TOTAL ENLISTED	679,490	475,440	172,470	475,603	1,803,003
CADETS & MIDSHIPMEN	3,283	3,460	-	4,103	10,846
GRAND TOTAL	796,001	545,967	191,115	580,790	2,103,873

A/ Excludes Active Duty Personnel Paid by an Appropriation 17 other than those entitled "Military Personnel".

TABLE P26.02
 DEPARTMENT OF DEFENSE
 FEMALE MILITARY PERSONNEL ON ACTIVE DUTY BY GRADE IN WHICH SERVING A/
 MAY 31, 1982

RANK/GRADE	TOTAL DOD	ARMY	NAVY	MARINE CORPS	AIR FORCE
GENERAL OF ARMY - FLEET ADMIRAL	-	-	-	-	-
GENERAL - ADMIRAL	-	-	-	-	-
LT GENERAL - VICE ADMIRAL	-	-	-	-	-
MAJ GENERAL - REAR ADMIRAL (U)	1	-	-	-	1
BRIG GENERAL - REAR ADMIRAL (L)	6	2	2	-	2
COLONEL - CAPTAIN	250	87	84	4	75
LIEUTENANT COL - COMMANDER	933	292	273	28	340
MAJOR - LT COMMANDER	2,474	890	813	55	716
CAPTAIN - LIEUTENANT	9,439	3,637	2,082	136	3,584
1ST LIEUTENANT - LIEUTENANT (JG)	6,559	2,056	1,309	148	3,046
2ND LIEUTENANT - ENSIGN	4,834	1,760	1,055	142	1,877
CHIEF WARRANT OFFICER W-4	7	1	3	3	-
CHIEF WARRANT OFFICER W-3	17	7	5	5	-
CHIEF WARRANT OFFICER W-2	98	78	6	14	-
WARRANT OFFICER W-1	68	63	-	5	-
TOTAL OFFICERS	24,686	8,873	5,632	540	9,641
E-9	44	22	3	5	14
E-8	182	93	34	25	30
E-7	1,263	738	229	115	181
E-6	6,684	3,188	2,077	350	1,069
E-5	29,851	11,908	6,156	1,465	10,322
E-4	52,144	23,095	8,411	1,830	18,808
E-3	44,440	13,385	11,877	1,718	17,460
E-2	17,137	7,043	5,102	1,449	3,543
E-1	13,092	6,428	2,991	538	3,135
TOTAL ENLISTED	164,837	65,900	36,880	7,495	54,562
CADETS & MIDSHIPMEN	1,098	324	287	-	487
GRAND TOTAL	190,621	75,097	42,799	8,035	64,690

A/ Excludes Active Duty Personnel Paid by an Appropriation other than those entitled "Military Personnel".18

TABLE P26.04

DEPARTMENT OF DEFENSE
MILITARY PERSONNEL ON ACTIVE DUTY BY GRADE IN WHICH SERVING

REGULAR A/

MAY 31, 1982

RANK/GRADE	ARMY	NAVY	MARINE CORPS	AIR FORCE	TOTAL DOD
GENERAL OF ARMY - FLEET ADMIRAL	-	-	-	-	-
GENERAL - ADMIRAL	9	9	2	13	33
LT GENERAL - VICE ADMIRAL	42	30	7	34	113
MAJ GENERAL - REAR ADMIRAL (U)	145	79	22	121	367
BRIG GENERAL - REAR ADMIRAL (L)	196	133	33	169	531
COLONEL - CAPTAIN	4,493	3,637	568	5,153	13,851
LIEUTENANT COL - COMMANDER	9,859	7,031	1,495	11,742	30,127
MAJOR - LT COMMANDER	13,005	10,889	2,909	15,841	42,644
CAPTAIN - LIEUTENANT	12,889	13,314	4,239	23,700	54,142
1ST LIEUTENANT - LIEUTENANT (JG)	4,963	6,474	2,140	1,963	15,540
2ND LIEUTENANT - ENSIGN	4,195	3,505	941	888	9,529
CHIEF WARRANT OFFICER W-4	1,114	487	143	-	1,744
CHIEF WARRANT OFFICER W-3	2,172	1,348	148	-	3,668
CHIEF WARRANT OFFICER W-2	897	967	686	-	2,550
WARRANT OFFICER W-1	22	-	495	-	517
TOTAL OFFICERS	54,001	47,903	13,828	59,624	175,356
E-9	3,888	3,408	1,225	4,721	13,242
E-8	13,700	8,227	3,406	9,605	34,938
E-7	46,938	29,170	8,653	34,457	119,218
E-6	79,123	64,197	14,166	53,554	211,040
E-5	119,811	83,010	26,764	102,051	331,636
E-4	195,662	82,618	32,359	105,544	415,183
E-3	106,978	87,466	42,893	109,902	347,239
E-2	56,691	42,352	27,782	33,235	160,060
E-1	56,391	23,680	14,636	22,093	116,800
TOTAL ENLISTED	679,182	424,128	171,884	475,162	1,750,356
REGULAR TOTAL	733,183	472,031	185,712	534,786	1,925,712

A/ REGULAR PLUS RETIRED REGULAR OFFICERS ON ACTIVE DUTY.

TABLE P26.05

DEPARTMENT OF DEFENSE
MILITARY PERSONNEL ON ACTIVE DUTY BY GRADE IN WHICH SERVING

RESERVE A/

MAY 31, 1982

RANK/GRADE	ARMY	NAVY	MARINE CORPS	AIR FORCE	TOTAL DOD
GENERAL OF ARMY - FLEET ADMIRAL	-	-	-	-	-
GENERAL - ADMIRAL	-	-	-	-	-
LT GENERAL - VICE ADMIRAL	1	-	-	-	1
MAJ GENERAL - REAR ADMIRAL (U)	2	-	-	-	2
BRIG GENERAL - REAR ADMIRAL (L)	2	1	-	-	3
COLONEL - CAPTAIN	164	134	14	192	504
LIEUTENANT COL - COMMANDER	1,136	724	30	907	2,797
MAJOR - LT COMMANDER	3,006	1,716	89	2,510	7,321
CAPTAIN - LIEUTENANT	19,365	5,125	614	12,261	37,365
1ST LIEUTENANT - LIEUTENANT (JG)	8,593	4,894	1,997	13,634	29,118
2ND LIEUTENANT - ENSIGN	6,896	6,516	2,065	11,956	27,433
CHIEF WARRANT OFFICER W-4	412	11	2	-	425
CHIEF WARRANT OFFICER W-3	2,015	10	4	-	2,029
CHIEF WARRANT OFFICER W-2	4,141	33	-	-	4,174
WARRANT OFFICER W-1	3,494	-	1	-	3,495
TOTAL OFFICERS	49,227	19,164	4,817	41,460	114,668
E-9	1	126	9	6	142
E-8	4	339	27	2	382
E-7	9	1,293	57	21	1,380
E-6	3	3,410	81	35	3,529
E-5	7	5,230	159	100	5,496
E-4	27	6,515	40	76	6,658
E-3	71	15,355	68	62	15,556
E-2	37	11,013	65	125	11,240
E-1	149	8,031	80	4	8,264
TOTAL ENLISTED	308	51,312	586	441	52,647
RESERVE TOTAL	49,535	70,476	5,403	41,901	167,315

A/ INCLUDES RESERVE, NATIONAL GUARD, AUS, AND AFUS OFFICERS ON ACTIVE DUTY.

TABLE P27.1
DEPARTMENT OF DEFENSE
SUMMARY OF ENLISTED PERSONNEL PROCUREMENT
FISCAL YEAR 1992

	OCT 1981	NOV 1981	DEC 1981	JAN 1982	FEB 1982	MAR 1982
TOTAL DEPARTMENT OF DEFENSE	54,440	49,482	38,831	55,500	47,681	43,014
INDUCTIONS	-	-	-	-	-	-
FIRST ENLISTMENTS	29,715	26,019	17,723	26,823	24,974	19,644
IMMEDIATE REENLISTMENTS	18,876	17,829	18,214	22,879	17,846	20,088
OTHER REENLISTMENTS	3,880	3,393	2,265	3,552	3,130	2,173
RESERVES TO ACTIVE DUTY A/	1,969	2,241	629	2,246	1,731	1,109
ARMY	21,293	15,909	17,755	20,034	20,662	19,545
INDUCTIONS	-	-	-	-	-	-
FIRST ENLISTMENTS	12,147	8,812	8,680	10,004	11,333	9,378
IMMEDIATE REENLISTMENTS	7,460	5,977	7,695	8,846	7,898	8,992
OTHER REENLISTMENTS	1,630	1,068	1,347	1,084	1,412	1,109
RESERVES TO ACTIVE DUTY	56	52	33	100	19	66
NAVY	12,583	17,493	5,909	14,463	10,874	7,899
INDUCTIONS	-	-	-	-	-	-
FIRST ENLISTMENTS	6,339	8,450	1,753	6,802	4,249	2,588
IMMEDIATE REENLISTMENTS	3,551	5,364	3,291	4,127	3,979	3,981
OTHER REENLISTMENTS	905	1,564	15	1,480	1,011	367
RESERVES TO ACTIVE DUTY	1,788	2,115	550	2,054	1,635	963
MARINE CORPS	6,824	4,840	3,590	5,997	5,365	4,336
INDUCTIONS	-	-	-	-	-	-
FIRST ENLISTMENTS	4,417	3,052	1,761	3,523	3,296	2,296
IMMEDIATE REENLISTMENTS	1,977	1,401	1,543	1,977	1,689	1,667
OTHER REENLISTMENTS	318	321	247	412	315	302
RESERVES TO ACTIVE DUTY	112	66	39	85	65	71
AIR FORCE	13,740	11,240	11,577	15,006	10,780	11,234
INDUCTIONS	-	-	-	-	-	-
FIRST ENLISTMENTS	6,812	5,705	5,529	6,494	6,096	5,382
IMMEDIATE REENLISTMENTS	5,888	5,087	5,685	7,928	4,280	5,448
OTHER REENLISTMENTS	1,027	440	356	576	392	395
RESERVES TO ACTIVE DUTY	13	8	7	7	12	9

A/ INCLUDES NATIONAL GUARD.

TABLE P27.1
 DEPARTMENT OF DEFENSE
 SUMMARY OF ENLISTED PERSONNEL PROCUREMENT
 FISCAL YEAR 1982

	APR 1982	MAY 1982	JUN 1982	JUL 1982	AUG 1982	SEP 1982
TOTAL DEPARTMENT OF DEFENSE	39,268	37,778				
INDUCTIONS	-	-				
FIRST ENLISTMENTS	18,783	17,931				
IMMEDIATE REENLISTMENTS	16,859	16,241				
OTHER REENLISTMENTS	2,086	1,577				
RESERVES TO ACTIVE DUTY A/	1,540	2,029				
ARMY	14,387	11,953				
INDUCTIONS	-	-				
FIRST ENLISTMENTS	6,651	5,918				
IMMEDIATE REENLISTMENTS	7,354	5,922				
OTHER REENLISTMENTS	366	103				
RESERVES TO ACTIVE DUTY	16	10				
NAVY	9,893	11,533				
INDUCTIONS	-	-				
FIRST ENLISTMENTS	4,760	4,632				
IMMEDIATE REENLISTMENTS	2,699	4,122				
OTHER REENLISTMENTS	991	901				
RESERVES TO ACTIVE DUTY	1,443	1,878				
MARINE CORPS	3,837	3,456				
INDUCTIONS	-	-				
FIRST ENLISTMENTS	2,257	2,262				
IMMEDIATE REENLISTMENTS	1,186	892				
OTHER REENLISTMENTS	328	175				
RESERVES TO ACTIVE DUTY	66	127				
AIR FORCE	11,151	10,836				
INDUCTIONS	-	-				
FIRST ENLISTMENTS	5,115	5,119				
IMMEDIATE REENLISTMENTS	5,620	5,305				
OTHER REENLISTMENTS	401	398				
RESERVES TO ACTIVE DUTY	15	14				

A/ INCLUDES NATIONAL GUARD.

TABLE P27.21

DEPARTMENT OF DEFENSE
ARMY ENLISTED PERSONNEL PROCUREMENT
FISCAL YEAR 1982

	OCT 1981	NOV 1981	DEC 1981	JAN 1982	FEB 1982	MAR 1982
TOTAL	21,293	15,939	17,755	20,034	20,662	19,545
REGULAR ENL. AND REENL. - TOTAL	21,237	15,857	17,722	19,934	20,643	19,479
FIRST ENLISTMENTS	12,147	8,812	8,680	10,004	11,333	9,378
REENLISTMENTS - TOTAL	9,090	7,045	9,042	9,930	9,310	10,101
IMMEDIATE REENLISTMENTS	7,460	5,977	7,695	8,846	7,898	8,992
FORMER REGULAR	7,418	5,959	7,672	8,833	7,894	8,986
FORMER RESERVE & N.G.	42	18	23	13	4	4
FORMER INDUCTEE	-	-	-	-	-	-
REENL. OTHER THAN IMMEDIATE	1,630	1,058	1,347	1,084	1,412	1,109
WITHIN 2-90 DAYS AFTER SEPARATION	182	114	118	91	107	61
FORMER REGULAR	39	37	29	16	14	9
FORMER RESERVE & N.G.	137	77	79	65	86	49
FORMER INDUCTEE	6	-	10	10	7	3
FORMER OFFICER	-	-	-	-	-	-
OVER 90 DAYS AFTER SEPARATION	1,448	954	1,229	993	1,305	1,048
INDUCTIONS	-	-	-	-	-	-
RESERVES AND N.G. CALLS	56	52	33	100	19	66

TABLE P27.21

DEPARTMENT OF DEFENSE
ARMY ENLISTED PERSONNEL PROCUREMENT
FISCAL YEAR 1962

	APR 1962	MAY 1962	JUN 1962	JUL 1962	AUG 1962	SEP 1962
TOTAL	14,307	11,953				
REGULAR ENL. AND REENL. - TOTAL	14,371	11,943				
FIRST ENLISTMENTS	6,651	5,918				
REENLISTMENTS - TOTAL	7,720	6,025				
IMMEDIATE REENLISTMENTS	7,354	5,922				
FORMER REGULAR	7,347	5,921				
FORMER RESERVE & N.G.	7	1				
FORMER INDUCTEE	-	-				
REENL. OTHER THAN IMMEDIATE	366	103				
WITHIN 2-90 DAYS AFTER SEPARATION	29	6				
FORMER REGULAR	3	1				
FORMER RESERVE & N.G.	24	5				
FORMER INDUCTEE	2	-				
FORMER OFFICER	-	-				
OVER 90 DAYS AFTER SEPARATION	337	97				
INDUCTIONS	-	-				
RESERVES AND N.G. CALLS	16	10				

TABLE P27.22

DEPARTMENT OF DEFENSE
NAVY ENLISTED PERSONNEL PROCUREMENT
FISCAL YEAR 1982

	OCT 1981	NOV 1981	DEC 1981	JAN 1982	FEB 1982	MAR 1982
TOTAL	12,583	17,493	5,909	14,463	10,874	7,899
REGULAR ENL. AND REENL. - TOTAL	10,735	15,378	5,359	12,409	9,239	6,936
FIRST ENLISTMENTS	6,339	8,450	1,753	6,802	4,249	2,588
REENLISTMENTS - TOTAL	4,456	6,928	3,606	5,607	4,990	4,348
IMMEDIATE REENLISTMENTS	3,551	5,364	3,291	4,127	3,979	3,981
FORMER REGULAR	3,446	5,121	3,128	3,859	3,687	3,695
FORMER RESERVE	105	243	163	268	292	286
REENL. OTHER THAN IMMEDIATE	905	1,564	315	1,480	1,011	367
WITHIN 2-90 DAYS AFTER SEPARATION	284	463	109	359	199	64
FORMER REGULAR	284	463	109	359	199	64
FORMER RESERVE	-	-	-	-	-	-
OVER 90 DAYS AFTER SEPARATION	621	1,101	206	1,121	812	303
INDUCTIONS	-	-	-	-	-	-
RESERVES TO ACTIVE DUTY	1,788	2,115	550	2,054	1,635	963
FIRST ENLISTMENTS	163	270	52	202	133	105
REENLISTMENTS	150	169	93	124	138	150
REPORTED TO ACTIVE DUTY	1,475	1,676	405	1,728	1,364	708

TABLE P27.22

DEPARTMENT OF DEFENSE
NAVY ENLISTED PERSONNEL PROCUREMENT
FISCAL YEAR 1982

	APR 1982	MAY 1982	JUN 1982	JUL 1982	AUG 1982	SEP 1982
TOTAL	9,693	11,533				
REGULAR ENL. AND REENL. - TOTAL	8,450	9,655				
FIRST ENLISTMENTS	4,760	4,632				
REENLISTMENTS - TOTAL	3,690	5,023				
IMMEDIATE REENLISTMENTS	2,699	4,122				
FORMER REGULAR FORMER RESERVE	2,538 161	3,940 182				
REENL. OTHER THAN IMMEDIATE	991	901				
WITHIN 2-90 DAYS AFTER SEPARATION	161	162				
FORMER REGULAR FORMER RESERVE	161	162				
OVER 90 DAYS AFTER SEPARATION	830	739				
INDUCTIONS	-	-				
RESERVES TO ACTIVE DUTY	1,443	1,878				
FIRST ENLISTMENTS REENLISTMENTS REPORTED TO ACTIVE DUTY	- 119 1,324	- 164 1,714				

TABLE P27.23

DEPARTMENT OF DEFENSE
MARINE CORPS ENLISTED PERSONNEL PROCUREMENT
FISCAL YEAR 1982

	APR 1982	MAY 1982	JUN 1982	JUL 1982	AUG 1982	SEP 1982
TOTAL	3,837	3,456				
REGULAR ENL. AND REENL. - TOTAL	3,771	3,329				
FIRST ENLISTMENTS	2,257	2,262				
REENLISTMENTS - TOTAL	1,514	1,067				
IMMEDIATE REENLISTMENTS	1,186	892				
FORMER REGULAR A/ FORMER RESERVE FORMER INDUCTEE	1,160 26 -	873 19 -				
REENL. OTHER THAN IMMEDIATE	328	175				
WITHIN 2-90 DAYS AFTER SEPARATION	42	25				
FORMER REGULAR FORMER RESERVE FORMER INDUCTEE	35 6 1	22 3 -				
OVER 90 DAYS AFTER SEPARATION B/	286	150				
INDUCTIONS	-	-				
RESERVES TO ACTIVE DUTY	66	127				
FIRST ENLISTMENTS REENLISTMENTS REPORTED TO ACTIVE DUTY	- 5 61	- 25 102				

A/ INCLUDES EXTENSIONS FOR WHICH REENLISTMENT BONUS IS PAID.
B/ INCLUDES ENLISTMENTS OF FORMER OFFICERS.

TABLE P27.24

DEPARTMENT OF DEFENSE
AIR FORCE ENLISTED PERSONNEL PROCUREMENT
FISCAL YEAR 1982

	OCT 1981	NOV 1981	DEC 1981	JAN 1982	FEB 1982	MAR 1982
TOTAL	13,740	11,240	11,577	15,006	10,780	11,234
REGULAR ENL. AND REENL. - TOTAL	13,727	11,232	11,570	14,999	10,768	11,225
FIRST ENLISTMENTS	6,812	5,705	5,529	6,494	6,096	5,382
REENLISTMENTS - TOTAL	6,915	5,527	6,041	8,505	4,672	5,843
IMMEDIATE REENLISTMENTS	5,888	5,087	5,685	7,929	4,280	5,448
FORMER REGULAR FORMER RESERVE & N.G.	5,882	5,083	5,679	7,924	4,279	5,448
	6	4	6	5	1	-
REENL OTHER THAN IMMEDIATE	1,027	440	356	576	392	395
WITHIN 2-90 DAYS AFTER SEPARATION	-	-	-	-	-	-
FORMER REGULAR FORMER RESERVE & N.G.	-	-	-	-	-	-
OVER 90 DAYS AFTER SEPARATION A/	1,027	440	356	576	392	395
INDUCTIONS	-	-	-	-	-	-
RESERVES & N.G. TO ACTIVE DUTY	13	8	7	7	12	9

A/ INCLUDES ENLISTMENTS OF FORMER COMMISSIONED AND WARRANT OFFICERS.

TABLE P27.24

DEPARTMENT OF DEFENSE
AIR FORCE ENLISTED PERSONNEL PROCUREMENT
FISCAL YEAR 1962

	APR 1962	MAY 1962	JUN 1962	JUL 1962	AUG 1962	SEP 1962
TOTAL	11,151	10,836				
REGULAR ENL. AND REENL. - TOTAL	11,136	10,822				
FIRST ENLISTMENTS	5,115	5,119				
REENLISTMENTS - TOTAL	6,021	5,703				
IMMEDIATE REENLISTMENTS	5,620	5,305				
FORMER REGULAR FORMER RESERVE & N.G.	5,619 1	5,304 1				
REENL. OTHER THAN IMMEDIATE	401	398				
WITHIN 2-90 DAYS AFTER SEPARATION	-	-				
FORMER REGULAR FORMER RESERVE & N.G.	-	-				
OVER 90 DAYS AFTER SEPARATION A/	401	398				
INDUCTIONS	-	-				
RESERVES & N.G. TO ACTIVE DUTY	15	14				

A/ INCLUDES ENLISTMENTS OF FORMER COMMISSIONED AND WARRANT OFFICERS.

TABLE P29 20-29.34

DEPARTMENT OF DEFENSE
REENLISTMENT RATES BY SERVICE

	A/ "UNADJUSTED" REENLISTMENT RATES FOR FIRST-TERM REGULARS					B/ "ADJUSTED" REENLISTMENT RATES FOR FIRST-TERM REGULARS				
	TOTAL DOD	ARMY	NAVY	MARINE CORPS	AIR FORCE	TOTAL DOD	ARMY	NAVY	MARINE CORPS	AIR FORCE
FY 1979										
ELIGIBLES	171,034	62,909	45,204	21,029	41,892	159,980	59,604	44,308	20,925	35,151
REENLISTMENTS	64,001	27,027	16,949	4,107	15,918	54,369	23,714	17,080	4,010	9,565
REENLISTMENT RATE	37.4%	43.0%	37.5%	19.5%	38.0%	34.0%	39.8%	38.5%	19.2%	27.2%
FY 1980										
ELIGIBLES	165,525	50,288	53,670	19,364	42,203	161,232	52,231	51,976	19,575	37,450
REENLISTMENTS	64,782	25,434	19,721	4,493	15,114	61,610	27,370	19,138	4,672	10,430
REENLISTMENT RATE	39.1%	50.6%	36.7%	23.2%	35.8%	38.2%	52.4%	36.8%	23.9%	27.9%
FY 1981										
ELIGIBLES	161,600	38,762	55,107	23,875	43,856	158,676	43,013	53,583	24,120	37,960
REENLISTMENTS	69,435	21,312	22,968	6,340	18,815	67,709	25,563	22,521	6,630	12,995
REENLISTMENT RATE	43.0%	55.0%	41.7%	26.6%	42.9%	42.7%	59.4%	42.0%	27.5%	34.2%
FY 1982 (6 MOS)										
ELIGIBLES	73,168	17,086	22,911	11,255	21,916	61,369	14,638	21,262	9,639	15,830
REENLISTMENTS	42,905	12,277	12,792	4,974	12,862	31,391	9,829	11,361	3,379	6,822
REENLISTMENT RATE	58.6%	71.9%	55.8%	44.2%	58.7%	51.2%	67.1%	53.4%	35.1%	43.1%

TABLE P29.20-29.34

DEPARTMENT OF DEFENSE
REENLISTMENT RATES BY SERVICE

	A/ "UNADJUSTED" REENLISTMENT RATES FOR TOTAL REGULARS				B/ "ADJUSTED" REENLISTMENT RATES FOR TOTAL REGULARS				REENLISTMENT RATE ARMY INDUCTEES			
	TOTAL DOD	ARMY	NAVY	MARINE CORPS	AIR FORCE	TOTAL DOD	ARMY	NAVY	MARINE CORPS	AIR FORCE	UN- ADJUSTED	ADJUSTED
FY 1979												
ELIGIBLES	343,032	144,849	74,818	37,016	66,349	322,679	134,924	73,598	36,668	77,489	-	-
REENLISTMENTS	181,338	81,443	35,367	12,398	52,130	162,994	71,505	35,488	12,047	43,954	-	-
REENLISTMENT RATE	52.9%	56.2%	47.3%	33.5%	60.4%	50.5%	53.0%	48.2%	32.9%	56.7%	-	-
FY 1980												
ELIGIBLES	343,425	133,010	86,251	35,032	89,132	334,952	136,721	83,581	34,920	79,722	-	-
REENLISTMENTS	190,260	82,793	41,556	12,386	53,528	183,494	86,494	40,500	12,237	44,263	-	-
REENLISTMENT RATE	55.4%	62.2%	48.2%	35.4%	60.0%	54.8%	63.3%	46.5%	35.0%	55.5%	-	-
FY 1981												
ELIGIBLES	334,048	116,743	94,303	29,453	93,549	331,979	131,957	90,462	29,070	60,490	-	-
REENLISTMENTS	201,527	77,892	51,519	10,517	61,599	200,987	93,105	49,039	10,182	46,661	-	-
REENLISTMENT RATE	60.3%	66.7%	54.6%	35.7%	65.8%	60.5%	70.6%	54.2%	35.0%	60.5%	-	-
FY 1982 (6 MOS)												
ELIGIBLES	167,813	59,242	44,438	18,400	45,683	144,345	55,774	39,644	15,779	33,148	-	-
REENLISTMENTS	122,308	47,055	30,402	10,534	34,317	99,262	43,587	25,892	7,930	21,853	-	-
REENLISTMENT RATE	72.9%	79.4%	68.3%	57.3%	75.1%	68.8%	78.1%	65.3%	50.3%	65.9%	-	-

TABLE P29 20 29 34

DEPARTMENT OF DEFENSE
REENLISTMENT RATES BY SERVICE

	A/ "UNADJUSTED" REENLISTMENT RATES FOR CAREER REGULARS				B/ "ADJUSTED" REENLISTMENT RATES FOR CAREER REGULARS					
	TOTAL DOD	ARMY	NAVY	MARINE CORPS	AIR FORCE	TOTAL DOD	ARMY	NAVY	MARINE CORPS	AIR FORCE
FY 1979										
ELIGIBLES	171,998	81,940	29,614	15,987	44,457	162,691	75,320	29,290	15,743	42,338
REENLISTMENTS	117,337	54,416	18,418	8,291	36,212	108,625	47,791	18,408	6,037	34,389
REENLISTMENT RATE	68.2%	66.4%	62.2%	51.9%	81.5%	66.8%	63.5%	62.8%	51.1%	81.2%
FY 1980										
ELIGIBLES	177,900	82,722	32,591	15,668	46,929	173,720	84,490	31,605	15,353	42,272
REENLISTMENTS	125,498	57,359	21,835	7,895	38,409	121,864	59,124	21,362	7,565	33,833
REENLISTMENT RATE	70.5%	69.3%	67.0%	50.4%	81.8%	70.2%	70.0%	67.6%	49.3%	80.0%
FY 1981										
ELIGIBLES	172,448	77,981	39,196	5,578	49,693	173,303	86,944	36,879	4,950	42,530
REENLISTMENTS	132,092	56,580	28,551	4,177	42,784	133,278	67,542	26,518	3,552	35,666
REENLISTMENT RATE	76.6%	72.6%	72.8%	74.9%	86.1%	76.9%	75.9%	71.9%	71.8%	83.9%
FY 1982 (6 MOS)										
ELIGIBLES	94,645	42,156	21,577	7,145	23,767	82,976	41,136	18,382	6,140	17,318
REENLISTMENTS	79,403	34,778	17,610	5,560	21,455	67,871	33,758	14,531	4,551	15,031
REENLISTMENT RATE	83.9%	82.5%	81.6%	77.6%	90.3%	81.8%	82.1%	79.1%	74.1%	86.8%

A/ "UNADJUSTED REENLISTMENT RATE" - THE RATIO OF TOTAL REENLISTMENTS OCCURRING IN A GIVEN PERIOD TO TOTAL SEPARATIONS ELIGIBLE TO REENLIST IN THE SAME PERIOD, EXPRESSED AS A PERCENTAGE.

B/ "ADJUSTED REENLISTMENT RATE" - THE "UNADJUSTED" RATE ADJUSTED TO EXCLUDE THE EFFECTS OF: (1) EARLY SEPARATIONS FOR IMMEDIATE REENLISTMENTS AND (2) OTHER EARLY DISCHARGES OF ELIGIBLES UNDER EARLY RELEASE PROGRAMS.

TABLE P309A

DEPARTMENT OF DEFENSE
ACTIVE DUTY MILITARY PERSONNEL STRENGTHS BY REGIONAL AREA AND BY COUNTRY

MARCH 31, 1982

REGIONAL AREA/COUNTRY	TOTAL	ARMY	AIR FORCE	NAVY	MARINE CORPS
TOTAL WORLDWIDE	2,106,925	791,762	579,503	543,703	191,957
ASHORE	1,881,276	791,762	579,503	543,703	186,051
AFLOAT	225,649	-	-	219,743	5,906
U. S. TERRITORY AND SPECIAL LOCATIONS	1,604,323	531,804	461,524	453,833	157,162
CONTINENTAL U.S.	1,291,609	478,304	422,698	250,365	140,242
ALASKA	21,094	8,395	10,939	1,565	195
HAWAII	44,553	17,856	6,252	11,637	8,808
AMERICAN SAMOA	1	1	-	-	-
GUAM	8,878	29	3,943	4,517	389
JOHNSTON ATOLL	115	107	8	-	-
MIDWAY ISLANDS	70	-	-	70	-
PUERTO RICO	3,445	380	45	2,844	176
TRUST TERRITORY OF THE PACIFIC ISLANDS	36	32	4	-	-
U. S. MISCELLANEOUS PACIFIC ISLANDS	2	2	-	-	-
VIRGIN ISLANDS OF THE U. S.	11	9	-	2	-
WAKE ISLAND	6	-	6	-	-
TRANSIENTS	72,689	26,689	17,629	21,019	7,352
AFLOAT	161,814	-	-	161,814	-
TOTAL FOREIGN COUNTRIES	502,602	259,958	117,979	89,870	34,795
ASHORE	438,767	259,958	117,979	31,941	28,889
AFLOAT	63,835	-	-	57,929	5,906
(1) WESTERN & SOUTHERN EUROPE	337,073	219,829	80,972	33,127	3,145
AUSTRIA	30	5	1	-	24
BELGIUM*	2,145	1,337	657	119	32
CYPRUS	12	2	1	-	9
DENMARK*	46	4	17	15	10
FINLAND	20	5	2	-	11
FRANCE*	91	37	16	4	34
GERMANY (FED REPUBLIC & WEST BERLIN)*	249,171	211,340	37,408	300	121
GREECE*	3,424	3,508	2,499	401	16
GREENLAND*	324	6	318	-	-
ICELAND*	2,955	2	1,119	1,712	122
IRELAND	9	1	2	-	6
ITALY*	13,071	4,282	4,366	4,160	263
LUXEMBOURG*	6	-	-	-	6
MALTA	1	1	-	-	-
NETHERLANDS*	2,509	743	1,740	17	9
NORWAY*	202	36	119	29	18
PORTUGAL*	1,468	64	1,070	323	11
SPAIN	8,700	30	5,151	3,332	187

TABLE P309A

DEPARTMENT OF DEFENSE
ACTIVE DUTY MILITARY PERSONNEL STRENGTHS BY REGIONAL AREA AND BY COUNTRY

MARCH 31, 1982

REGIONAL AREA/COUNTRY	TOTAL	ARMY	AIR FORCE	NAVY	MARINE CORPS
LEBANON	14	3	-	1	10
LIBERIA	27	15	2	4	6
MADAGASCAR	6	-	-	1	5
MALAWI	3	3	-	-	-
MALI	4	-	-	-	4
MAURITIUS	6	-	-	-	6
MOROCCO	42	15	7	3	17
NEPAL	9	2	-	-	7
NIGER	5	-	-	-	5
NIGERIA	17	4	3	-	10
OMAN	7	2	2	1	2
PAKISTAN	23	5	6	-	12
ST. HELENA (INCLUDES ASCENSION ISLAND)	1	-	1	-	-
SAUDI ARABIA	643	274	283	75	11
SENEGAL	12	-	-	2	10
SEYHELLES	4	-	4	-	-
SOMALIA	10	6	-	-	4
SOUTH AFRICA	18	2	3	2	11
SRI LANKA	8	-	-	3	5
SUDAN	54	45	2	-	7
SYRIA	11	2	-	-	9
TANZANIA, UNITED REPUBLIC OF	7	-	-	-	7
TUNISIA	48	37	1	2	8
UPPER VOLTA	6	-	-	-	6
YEMEN (SANA)	19	10	4	-	5
ZAIRE	22	9	5	-	8
ZAMBIA	4	-	-	-	4
AFLOAT	12,449	-	-	12,395	54
WESTERN HEMISPHERE	20,771	8,045	2,185	7,060	3,481
ANTIGUA	129	-	1	128	-
ARGENTINA	20	4	6	4	6
BAHAMAS, THE	52	12	1	33	6
BARBADOS	9	1	-	1	7
BERMUDA	1,355	-	-	1,268	87
BOLIVIA	11	4	1	-	6
BRAZIL	49	16	7	4	22
CANADA	677	13	249	404	11
CHILE	16	4	1	1	10
COLOMBIA	25	6	5	3	11

36

TABLE P309A

DEPARTMENT OF DEFENSE
ACTIVE DUTY MILITARY PERSONNEL STRENGTHS BY REGIONAL AREA AND BY COUNTRY
MARCH 31, 1982

REGIONAL AREA/COUNTRY	TOTAL	ARMY	AIR FORCE	NAVY	MARINE CORPS
COSTA RICA	12	4	-	-	8
CUBA (GUANTANAMO)	2,207	-	-	1,721	486
DOMINICAN REPUBLIC	24	11	2	3	8
ECUADOR	22	8	5	2	7
EL SALVADOR	64	41	1	1	21
GUATEMALA	17	5	1	-	11
GUYANA	4	-	-	-	4
HAITI	9	2	1	-	6
HONDURAS	41	20	12	-	9
JAMAICA	10	-	-	1	9
MEXICO	24	7	5	2	10
NICARAGUA	12	3	1	-	8
PANAMA	10,227	7,862	1,866	333	166
PARAGUAY	12	3	1	1	7
PERU	25	8	6	4	7
SURINAME	2	2	-	-	-
TURKS AND CAICOS ISLANDS	1	-	-	-	-
URUGUAY	12	4	1	1	6
VENEZUELA	29	5	11	6	7
AFLOAT	5,674	-	-	3,139	2,535
(5) ANTARCTICA	78	-	-	78	-
(5) EASTERN EUROPE	186	74	18	4	90
BULGARIA	9	1	2	-	6
CZECHOSLOVAKIA	11	1	3	-	7
GERMAN DEMOCRATIC REPUBLIC	50	44	2	-	6
HUNGARY	12	4	2	-	6
POLAND	19	4	1	-	14
ROMANIA	18	6	1	-	11
UNION OF SOVIET SOCIALIST REPUBLICS	48	7	4	4	32
YUGOSLAVIA	19	7	4	-	8
(7) UNDISTRIBUTED	367	45	54	268	-

NOTE: ASHORE INCLUDES TEMPORARILY SHORE-BASED.

Section 2

RESERVE MILITARY MANPOWER STATISTICS

TABLE R11.0

DEPARTMENT OF DEFENSE
RESERVE COMPONENT STRENGTH SUMMARY

MAY 31, 1982

TYPE OF DUTY	RESERVES BY RESERVE CATEGORY		
	TOTAL	OFFICER	ENLISTED A/
TOTAL	2,231,297	689,245	1,542,052
READY RESERVE			
NOT ON ACTIVE DUTY	1,334,825	210,782	1,124,043
ACTIVE STATUS	1,325,202	210,107	1,115,095
INACTIVE STATUS B/	9,623	675	8,948
STANDBY RESERVE			
ON ACTIVE STATUS	55,362	48,887	6,475
INACTIVE STATUS	12,903	7,083	5,820
	42,459	41,804	655
RETIRED - RETIRED STATUS	841,110	429,576	411,534

A/ INCLUDES OFFICER CANDIDATES.
B/ INACTIVE NATIONAL GUARD AND REP'S IN NON-PAY STATUS.

RESERVES IN "PAID STATUS"			
PAY GROUP	TOTAL	OFFICER	ENLISTED
A, B, C, F, P, T, Q	944,561	131,563	812,998
U, AGR*			

* FULL-TIME ACTIVE DUTY SUPPORT PERSONNEL

TABLE R12.0

DEPARTMENT OF DEFENSE
RESERVE STRENGTH - OFFICER AND ENLISTED
NOT ON ACTIVE DUTY

DATE	TOTAL	OFFICERS	ENLISTED A/
31 OCT 1981	2,225,173	687,476	1,537,697
30 NOV 1981	2,213,028	697,527	1,525,501
31 DEC 1981	2,203,695	687,384	1,522,311
31 JAN 1982	2,210,674	686,743	1,523,931
28 FEB 1982	2,210,666	686,073	1,524,593
31 MAR 1982	2,228,765	688,458	1,540,327
30 APR 1982	2,241,202	688,869	1,552,333
31 MAY 1982	2,231,297	689,245	1,542,052

A/ INCLUDES OFFICER CANDIDATES.

TABLE R13.0
 DEPARTMENT OF DEFENSE
 READY RESERVE AND ACTIVE DUTY STRENGTH COMPARED TO STATUTORY LIMITATION
 MAY 31, 1982

	TOTAL	ON ACTIVE DUTY	NOT ON ACTIVE DUTY
STATUTORY READY RESERVE LIMITATION A/	2,900,000		
DIFFERENCE	1,378,182		
READY RESERVE AND ACTIVE DUTY STRENGTH	1,521,818	168,178	1,353,640
COAST GUARD RESERVE	19,648	833	18,815
DOD RESERVE	1,502,170	167,345	1,334,825
ARMY	923,995	49,529	874,466
NATIONAL GUARD B/	418,556	438	418,118
ARMY RESERVE	505,439	49,091	456,348
NAVAL RESERVE	241,824	70,482	171,342
MARINE CORPS RESERVE	88,470	5,433	83,037
AIR FORCE	247,881	41,901	205,980
AIR NATIONAL GUARD C/	100,128	254	99,874
AIR FORCE RESERVE	147,753	41,647	106,106

A/ SECTION 205(B), ARMED FORCES RESERVE ACT OF 1952, AS AMENDED.
 B/ INCLUDES "INACTIVE NATIONAL GUARD" NUMBERING 9,623 AND REP'S NUMBERING 3,438.
 C/ INCLUDES REP'S IN A NON-PAY STATUS NUMBERING 156.

TABLE R14.0

DEPARTMENT OF DEFENSE
RESERVE COMPONENT PERSONNEL BY RESERVE CATEGORY
NOT ON ACTIVE DUTY

DATE	TOTAL	READY	STANDBY	RETIRED
31 OCT 1981	2,225,173	1,317,425	60,352	847,396
30 NOV 1981	2,213,028	1,311,274	58,262	843,492
31 DEC 1981	2,209,695	1,309,312	57,170	843,213
31 JAN 1982	2,210,574	1,308,165	57,746	844,663
28 FEB 1982	2,210,666	1,311,882	57,017	841,767
31 MAR 1982	2,228,785	1,330,997	56,331	841,457
30 APR 1982	2,241,202	1,344,298	55,972	840,932
31 MAY 1982	2,231,297	1,334,825	55,362	841,110

TABLE R14.0
 DEPARTMENT OF DEFENSE
 RESERVE COMPONENT PERSONNEL BY RESERVE CATEGORY
 NOT ON ACTIVE DUTY

OFFICERS

DATE	TOTAL	READY	STANDBY	RETIRED
31 OCT 1981	687,476	206,817	53,307	427,352
30 NOV 1981	687,527	208,237	51,453	427,837
31 DEC 1981	687,384	208,291	50,716	428,377
31 JAN 1982	686,743	206,547	51,336	428,860
28 FEB 1982	686,073	206,689	50,642	428,742
31 MAR 1982	688,458	209,561	49,782	429,115
30 APR 1982	688,869	210,361	49,357	429,151
31 MAY 1982	689,245	210,782	48,887	429,576

TABLE R14.0

DEPARTMENT OF DEFENSE
RESERVE COMPONENT PERSONNEL BY RESERVE CATEGORY
NOT ON ACTIVE DUTY

ENLISTED A/

DATE	TOTAL	READY	STANDBY	RETIRED
31 OCT 1981	1,537,697	1,110,608	7,045	420,044
30 NOV 1981	1,525,501	1,103,037	6,809	415,655
31 DEC 1981	1,522,311	1,101,021	6,454	414,836
31 JAN 1982	1,523,831	1,101,618	6,410	415,803
28 FEB 1982	1,524,593	1,105,193	6,375	413,025
31 MAR 1982	1,540,327	1,121,436	6,549	412,342
30 APR 1982	1,552,333	1,133,937	6,615	411,781
31 MAY 1982	1,542,052	1,124,043	6,475	411,534

A/ INCLUDES OFFICER CANDIDATES.

TABLE R21.0
 DEPARTMENT OF DEFENSE
 RESERVE PERSONNEL ON ACTIVE DUTY BY COMPONENT

MAY 31, 1982

COMPONENT/PERSONNEL	TOTAL	OFFICER	ENLISTED A/
TOTAL DEPARTMENT OF DEFENSE	167,345	114,695	52,650
ARMY - TOTAL	49,529	49,224	305
NATIONAL GUARD OF THE U. S.	438	395	43
ARMY RESERVE	49,091	48,829	262
NAVAL RESERVE	70,482	19,164	51,318
MARINE CORPS RESERVE	5,433	4,847	586
AIR FORCE - TOTAL	41,901	41,460	441
AIR NATIONAL GUARD OF THE U. S.	254	184	70
AIR FORCE RESERVE	41,647	41,276	371

A/ INCLUDES OFFICER CANDIDATES.

TABLE R22.0

DEPARTMENT OF DEFENSE
RESERVE STRENGTH ON ACTIVE DUTY A/

DATE	TOTAL DOD	ARMY			NAVAL RESERVE	MARINE CORPS RESERVE	AIR FORCE		
		NATIONAL GUARD	ARMY RESERVE				AIR NATIONAL GUARD	AIR FORCE RESERVE	
31 OCT 1981	171,064	559	53,083	69,053	5,408	297	42,664		
30 NOV 1981	172,669	543	53,186	70,084	5,386	266	43,204		
31 DEC 1981	172,325	525	53,134	69,911	5,277	260	43,218		
31 JAN 1982	172,134	549	53,173	70,565	5,209	265	42,373		
28 FEB 1982	169,758	495	51,627	70,434	5,551	254	41,397		
31 MAR 1982	166,260	479	49,255	69,575	5,468	249	41,234		
30 APR 1982	166,320	457	48,689	70,025	5,393	251	41,505		
31 MAY 1982	167,345	438	49,091	70,482	5,433	254	41,647		

A/ CONTINUOUS OR EXTENDED ACTIVE DUTY.
EXCLUDES ACTIVE DUTY FOR RESERVE TRAINING.

TABLE R23.0

DEPARTMENT OF DEFENSE
RESERVE PERSONNEL BY COMPONENT AND CATEGORY
NOT ON ACTIVE DUTY

MAY 31, 1982

COMPONENT/ PERSONNEL	TOTAL	NAT'L GUARD OF THE U.S.			ARMY RESERVE	NAVAL RESERVE	MARINE CORPS RESERVE	AIR B/ NAT'L GUARD OF THE U.S.	AIR FORCE RESERVE
		A/	B/	C/					
TOTAL	2,231,297	418,118	920,026	320,923	99,874	379,431			
OFFICER	689,245	39,372	298,430	161,438	12,510	163,577			
ENLISTED C/	1,542,052	378,746	621,596	159,485	87,364	215,854			
READY RESERVE	1,334,825	418,118	456,348	171,342	99,874	106,106			
OFFICER	210,782	39,372	92,554	36,133	12,510	23,975			
ENLISTED C/	1,124,043	378,746	363,794	135,209	87,364	82,131			
STANDBY RESERVE	55,362	-	1,912	18,384	-	33,399			
OFFICER	48,687	-	230	17,095	-	30,013			
ENLISTED	6,475	-	1,682	1,289	-	3,386			
ACTIVE STATUS	12,903	-	1,841	1,281	-	6,225			
OFFICER	7,083	-	159	83	-	5,401			
ENLISTED	5,820	-	1,682	1,198	-	2,824			
INACTIVE STATUS	42,459	-	71	17,103	-	25,174			
OFFICER	41,804	-	71	17,012	-	24,612			
ENLISTED	655	-	-	91	-	562			
RETIRED RESERVE	841,110	-	461,766	131,197	-	239,926			
OFFICER	429,576	-	205,646	108,210	-	109,589			
ENLISTED	411,534	-	256,120	22,987	-	130,337			

A/ INCLUDES "INACTIVE NATIONAL GUARD" NUMBERING 9,623 TOTAL, 675 OFFICERS, 8,948 ENLISTED
AND RESERVE ENLISTMENT PROGRAM (REPS) IN A NON-PAY STATUS NUMBERING 3,438.

B/ INCLUDES REPS IN A NON-PAY STATUS NUMBERING 156.

C/ INCLUDES OFFICER CANDIDATES.

TABLE R24.0

DEPARTMENT OF DEFENSE
RESERVE STRENGTH NOT ON ACTIVE DUTY A/

DATE	TOTAL DOD	ARMY			NAVAL RESERVE	MARINE CORPS RESERVE	AIR FORCE	
		B/ NATIONAL GUARD	ARMY RESERVE	NAVAL RESERVE			AIR NATIONAL GUARD	AIR FORCE RESERVE
31 OCT 1981	2,225,173	400,780	899,453	333,165	98,363	98,293	395,119	
30 NOV 1981	2,213,028	401,890	894,023	331,172	97,593	98,407	389,943	
31 DEC 1981	2,209,695	404,257	894,061	327,890	96,675	98,646	388,666	
31 JAN 1982	2,210,574	406,825	894,050	328,248	95,753	98,796	386,902	
28 FEB 1982	2,210,666	410,022	897,964	326,017	95,760	98,880	382,023	
31 MAR 1982	2,228,785	413,674	906,521	323,857	103,924	99,406	381,403	
30 APR 1982	2,241,202	416,936	917,605	322,385	104,603	99,579	380,094	
31 MAY 1982	2,231,297	418,118	920,026	320,923	92,925	99,874	379,431	

A/ INCLUDES RESERVES ON ACTIVE DUTY
FOR RESERVE TRAINING PURPOSES.

B/ INCLUDES "INACTIVE" NATIONAL GUARD.

TABLE R26.5

DEPARTMENT OF DEFENSE
SELECTED RESERVE STRENGTH A/

COMPONENT/ PERSONNEL	OCT 1981	NOV 1981	DEC 1981	JAN 1982	FEB 1982	MAR 1982
TOTAL DOD OFFICERS	906,083	908,061	913,181	918,414	924,081	933,520
ENLISTED	127,714	127,790	128,615	129,207	129,561	130,530
	778,369	780,271	784,566	789,207	794,520	802,990
ARMY NATIONAL GUARD OFFICERS	389,882	391,010	393,121	395,667	399,040	402,465
ENLISTED	38,451	38,400	38,464	38,469	38,437	38,473
	351,431	352,610	354,657	357,198	360,603	363,992
ARMY RESERVE OFFICERS	232,404	233,398	235,722	237,318	238,977	243,093
ENLISTED	44,411	44,649	44,988	45,346	45,510	45,959
	187,993	188,749	190,734	191,972	193,467	197,134
NAVAL RESERVE OFFICERS	86,989	86,522	87,010	87,690	88,043	88,524
ENLISTED	16,328	16,138	16,477	16,711	16,911	17,098
	70,661	70,384	70,533	70,979	71,132	71,426
MARINE CORPS RESERVE OFFICERS	36,971	36,997	36,661	36,717	36,717	37,186
ENLISTED	2,496	2,530	2,523	2,531	2,531	2,718
	34,475	34,467	34,138	34,186	34,186	34,468
AIR NATIONAL GUARD OFFICERS	98,167	98,287	98,507	98,659	98,736	99,224
ENLISTED	12,369	12,397	12,409	12,414	12,418	12,486
	85,798	85,890	86,098	86,245	86,318	86,738
AIR FORCE RESERVE OFFICERS	61,670	61,847	62,160	62,363	62,568	63,028
ENLISTED	13,659	13,676	13,754	13,736	13,754	13,796
	48,011	48,171	48,406	48,627	48,814	49,232

A/ INCLUDES PAY GROUPS A, B, C, F, P, T, Q, U, AGR (FULL-TIME ACTIVE DUTY SUPPORT PERSONNEL)

TABLE R26.5

DEPARTMENT OF DEFENSE
SELECTED RESERVE STRENGTH A/

COMPONENT/ PERSONNEL	APR 1982	MAY 1982	JUN 1982	JUL 1982	AUG 1982	SEP 1982
TOTAL DOD OFFICERS ENLISTED	940,418 131,048 809,370	944,561 131,563 812,998				
ARMY NATIONAL GUARD OFFICERS ENLISTED	405,015 38,519 366,496	405,057 38,697 366,360				
ARMY RESERVE OFFICERS ENLISTED	245,586 46,114 199,472	248,628 46,203 202,425				
NAVAL RESERVE OFFICERS ENLISTED	89,313 17,396 71,917	89,607 17,529 72,078				
MARINE CORPS RESERVE OFFICERS ENLISTED	37,716 2,716 35,000	37,660 2,725 34,935				
AIR NATIONAL GUARD OFFICERS ENLISTED	99,415 12,461 86,954	99,718 12,510 87,208				
AIR FORCE RESERVE OFFICERS ENLISTED	63,373 13,842 49,531	63,891 13,899 49,992				

A/ INCLUDES PAY GROUPS A, B, C, F, P, T, Q, U, AGR (FULL-TIME ACTIVE DUTY SUPPORT PERSONNEL)

G L O S S A R Y O F T E R M S

Active Duty. Full-time duty in the active service of a uniformed service, including duty on the active list, full-time training duty, annual training duty, and attendance while in the active service, at a school designated as a service school by law or by the Secretary concerned.

Actual Strength. The number of personnel in, or projected to be in, an organization or account at a specified point in time.

Armed Forces of the United States. Includes the Army, Navy, Air Force, Marine Corps, and Coast Guard, and all components thereof.

Assigned Strength. Actual strength of an entire service, not necessarily equal to combined unit actual strengths since individuals may be assigned but not joined.

Authorized Strength. The total strength authorized by Congress (for internal Service applications only). Authorized strength may be used synonymously with documented strength as defined below.

Cadet or Midshipman Enrolled in the Reserve Officers Training Corps (ROTC) Program. A member of the Senior Reserve Officer Training Corps (SROTC) under 10 U.S.C. 2107 for tuition, fees, books, and laboratory expenses.

Continental United States. Unless otherwise qualified, means the 48 contiguous States and the District of Columbia.

Enlisted Member. A person enlisted, enrolled, or conscripted into the military service.

Enlistment. (1) A voluntary entrance into military service under enlisted status, as distinguished from induction through Selective Service.

(2) A period of time, contractual or prescribed by law, which enlisted members serve between enrollment and discharge.

Officer. A commissioned or warrant officer.

Reserve Components. The Army National Guard of the United States, Army Reserve, Naval Reserve, Marine Corps Reserve, Air National Guard of the United States, Air Force Reserve, Coast Guard Reserve, and the Reserve Corps of the Public Health Service.

Service Academy Cadet or Midshipman. A person in training at one of the service academies to become a commissioned officer.

Transients. All military members who are not available for duty while executing permanent change of station (PCS) orders. Transients shall comprise all military personnel in a travel, proceed, leave enroute, or temporary duty enroute status on PCS orders to execute an accession, separation, training, operational, or rotational move.

Warrant Officer. A person who holds a commission or warrant in a warrant officer grade.