

MICROCOPY RESOLUTION TEST CHART
NATIONAL BUREAU OF STANDARDS-1963-A

ADA 121093

2

JOB LANGUAGE PERFORMANCE REQUIREMENTS
FOR T76Y
MOS

UNIT SUPPLY SPECIALIST

REFERENCE SOLDIER'S MANUAL DATED

27 May 1980

Copy available to DTIC does not
permit fully legible reproduction

DTIC
ELECTE
NOV 4 1982
S D
H

DTIC FILE COPY

DISTRIBUTION STATEMENT A
Approved for public release;
Distribution Unlimited

82 11 01 162

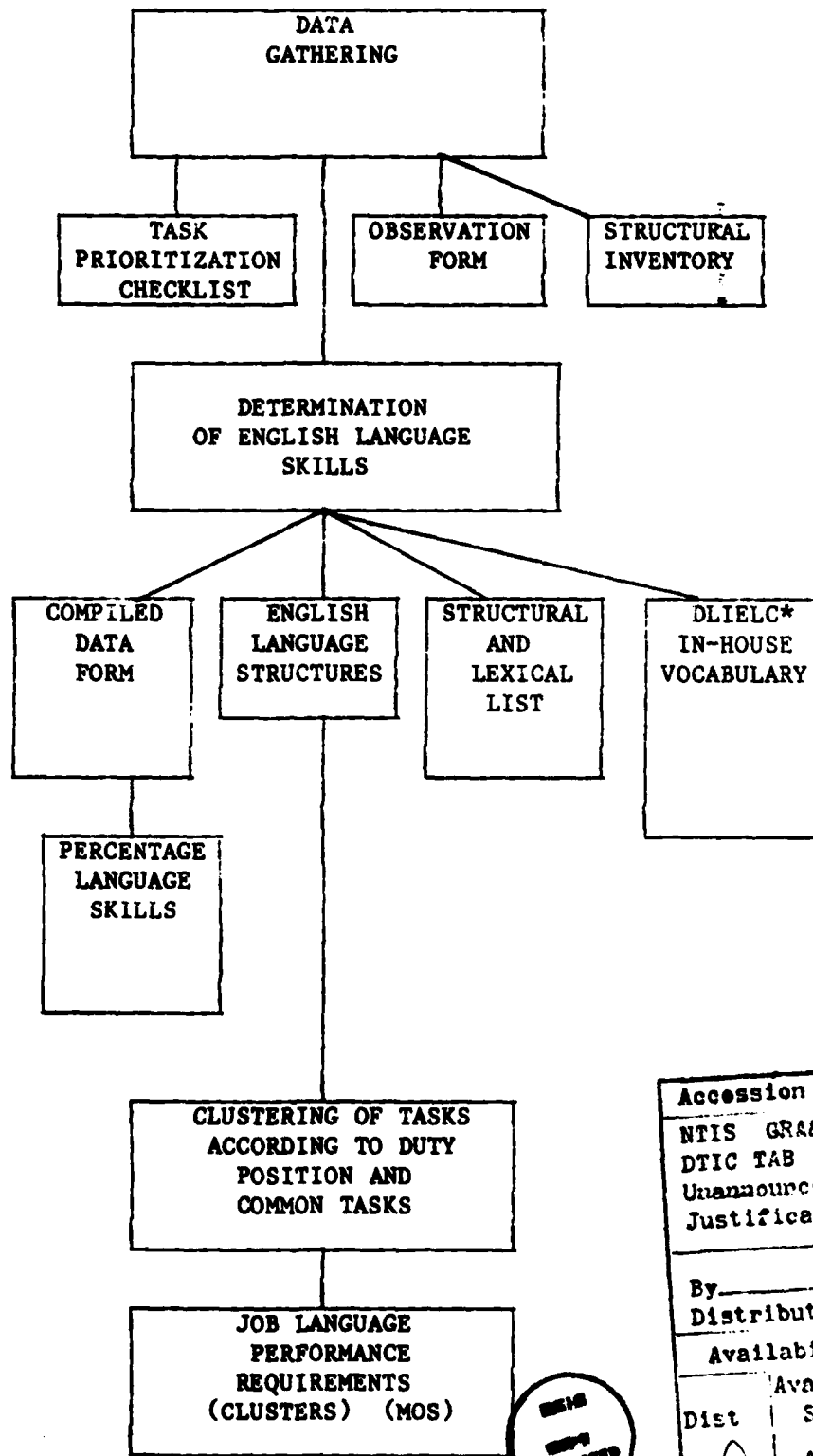
DISCLAIMER NOTICE

**THIS DOCUMENT IS BEST QUALITY
PRACTICABLE. THE COPY FURNISHED
TO DTIC CONTAINED A SIGNIFICANT
NUMBER OF PAGES WHICH DO NOT
REPRODUCE LEGIBLY.**

UNCLASSIFIED

SECURITY CLASSIFICATION OF THIS PAGE (When Data Entered)

REPORT DOCUMENTATION PAGE		READ INSTRUCTIONS BEFORE COMPLETING FORM										
1. REPORT NUMBER	2. GOVT ACCESSION NO. AD-A121093	3. RECIPIENT'S CATALOG NUMBER										
4. TITLE (and Subtitle) Job Language Performance Requirements (JLPR) for Pre-BT Extended Course Mos 76V		5. TYPE OF REPORT & PERIOD COVERED Final										
		6. PERFORMING ORG. REPORT NUMBER										
7. AUTHOR(s) Defense Language Institute-English Language Center		8. CONTRACT OR GRANT NUMBER(s)										
9. PERFORMING ORGANIZATION NAME AND ADDRESS Defense Language Institute-English Language Center ATTN: DLIELC-LEACA Lackland Air Force Base, TX 78236		10. PROGRAM ELEMENT, PROJECT, TASK AREA & WORK UNIT NUMBERS										
11. CONTROLLING OFFICE NAME AND ADDRESS		12. REPORT DATE SECRET										
		13. NUMBER OF PAGES 177										
14. MONITORING AGENCY NAME & ADDRESS (if different from Controlling Office) Training Developments Institute ATTN: ATTG-DOR Fort Monroe, VA 23651		15. SECURITY CLASS. (of this report) UNCLASSIFIED										
		15a. DECLASSIFICATION/DOWNGRADING SCHEDULE										
16. DISTRIBUTION STATEMENT (of this Report) Approved for public release; distribution unlimited.												
17. DISTRIBUTION STATEMENT (of the abstract entered in Block 20, if different from Report)												
18. SUPPLEMENTARY NOTES												
19. KEY WORDS (Continue on reverse side if necessary and identify by block number)												
<table border="0"> <tr> <td>Job Language Performance Requirements (JLPR)</td> <td>Task Inventory</td> </tr> <tr> <td>Lexical Analysis</td> <td>Common Tasks</td> </tr> <tr> <td>Structural Analysis</td> <td>Listening</td> </tr> <tr> <td>English Language Skills</td> <td>Speaking</td> </tr> <tr> <td>Task Prioritization Checklist</td> <td>Reading</td> </tr> </table>			Job Language Performance Requirements (JLPR)	Task Inventory	Lexical Analysis	Common Tasks	Structural Analysis	Listening	English Language Skills	Speaking	Task Prioritization Checklist	Reading
Job Language Performance Requirements (JLPR)	Task Inventory											
Lexical Analysis	Common Tasks											
Structural Analysis	Listening											
English Language Skills	Speaking											
Task Prioritization Checklist	Reading											
20. ABSTRACT (Continue on reverse side if necessary and identify by block number)												
<p>The Job Language Performance Requirements (JLPR) study was conducted to determine language tasks the soldier must do in studying/performing job tasks. The language skills (listening, reading, writing, speaking) required to learn each Army job task were identified, conditions studied and standards determined. The data that generated the JLPR is identified.</p>												



Accession For	
NTIS GRA&I	<input checked="" type="checkbox"/>
DTIC TAB	<input type="checkbox"/>
Unannounced	<input type="checkbox"/>
Justification	
By _____	
Distribution/	
Availability Codes	
Dist	Avail and/or Special
A	23

MEMO
NOT RECORDED
2

FIGURE 1

*Defense Language Institute English Language Center

CONTENTS

	PREFACE	iii-iv
SECTION I	<u>DATA GATHERING</u>	1-1
	Methods	
	Forms	
	Summary/Conclusion	
SECTION II	<u>DETERMINATION OF ENGLISH LANGUAGE SKILLS</u>	2-1
	Organization of Data	
	Table of Language Skills	
	Forms	
	Vocabulary	
	Summary/Conclusion	
SECTION III	<u>CLUSTERING OF COMMON AND DUTY POSITION TASKS</u>	3-1
	Explanation	
	Clusters	
SECTION IV	<u>JOB LANGUAGE PERFORMANCE REQUIREMENTS</u>	4-1
	Format	
	Task	
	Explanation of Language Tasks vs MOS Tasks	
	Conditions	
	Standards	
	Summary/Conclusion	
SECTION V	<u>JOB LANGUAGE PERFORMANCE REQUIREMENTS (CLUSTERED)</u>	5-1
	Percentage Language Skills	
	Job Language Performance Requirements	
	Task Numbers	
	Task Names	
SECTION VI	<u>JOB LANGUAGE PERFORMANCE REQUIREMENTS</u> <u>(Entire MOS)</u>	6-1
APPENDICES		
1.	Task Prioritization Checklist	A 1-
2.	Task Inventory Compiled Data Form	A 2-
3.	Percentage Language Skills	A 3-
4.	Observation Forms	A 4-
5.	Structural/Lexical List	A 5-
6.	Vocabulary (DLIELC in-house)	A 6-
7.	Vocabulary (machine-generated)	A 7-
8.	English Language Structures	A 8-

PREFACE

INSTRUCTIONS FOR REVIEW OF JOB LANGUAGE PERFORMANCE REQUIREMENTS

This report is organized in six main sections. Sections I-IV discuss methods, forms and rationale for gathering, organizing and analyzing research data used to develop Job Language Performance Requirements (JLPR). Please look through these sections to get a general understanding of the background underlying the JLPR. Sections V and VI are the major substantive portions of the analysis. They are the results of the analysis and constitute the basis for development of any MOS-oriented English language materials. Section V contains the JLPR by cluster/topic, while Section VI contains the JLPR covering the entire range of clusters/topics.

The appendices, one through eight, contain all the information used to determine the Job Language Performance Requirements. Please write any suggestions or changes directly on the document or attach additional notes, if necessary.

The points covered in the six major sections are supported in greater detail in eight appendices. Below is an overview of these appendices.

Appendix one contains the Task Prioritization Checklist. It was taken to the field to collect the raw data. This form was approved for use by the Department of the Army.

Appendix two contains the Task Inventory Compiled Data Form. It was used to organize data from Unit and AIT respondents.

Appendix three defines the language skills by percentage. This form includes computations of language skills for each task cluster.

Appendix four contains the Observation Form used in the recording of types of listening and speaking skills required, as seen by observers, in the learning and performing of a task. The variety of environmental situations is also included on this form.

Appendix five contains the final list of structural and lexical items found through data gathering and organization.

Appendix six contains the DLIELC in-house vocabulary list. This is a task by task listing of the vocabulary extracted from the Soldier's Manual.

Appendix seven contains the machine-generated vocabulary for this MOS prepared by the United States Army Training and Doctrine Command (TRADOC), Fort Monroe, Virginia.

Appendix eight contains the list of structural and lexical items requisite to this MOS.

Thank you for your cooperation. It is greatly appreciated.

SECTION I

DATA GATHERING

INTRODUCTION

This section discusses the procedures and forms in the gathering of data used to determine the Job Language Performance Requirements for this MOS.

SECTION I: DATA GATHERING

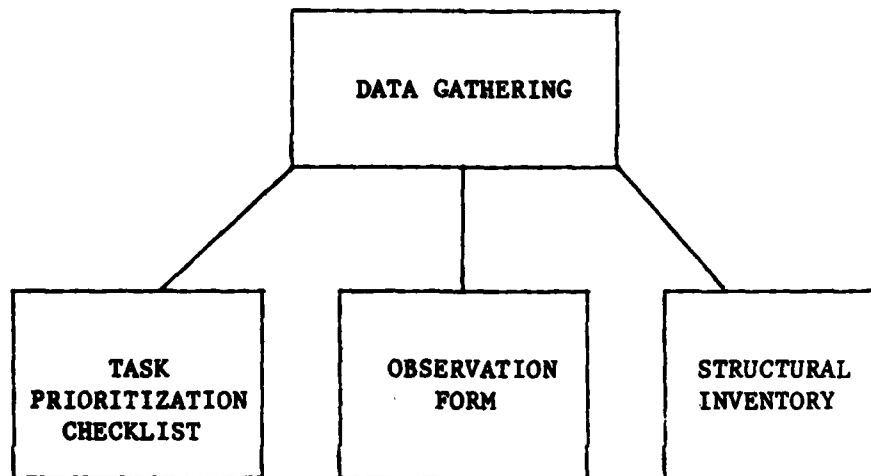


FIGURE 2

In order to establish Job Language Performance Requirements for this MOS the curriculum development specialists at the Defense Language Institute English Language Center (DLIELC) analyzed the current learning and working situations, and individual tasks. The goal was to collect data which would help identify the Job Language Performance Requirements pertinent to this MOS.

To conduct this analysis, training specialists visited the AIT School and Unit cadre. Interviews were conducted using a Task Prioritization Checklist, (Appendix 1). For each task, first-line supervisors answered the following questions:

1. Is the task taught?
2. How is the task taught?
3. Is the task tested?
4. How is the task tested?
5. How important are speaking, listening, reading and writing in learning and performing the task?
6. What are the results of poor performance in performing the task.

Additional data were gathered through use of an Observation Form and an analysis of language structures in the Soldier's Manual for this MOS.

The Observation Form (Appendix 4) was used to record actual observations of the learning situations, populations, tasks, and language.

The lexical and structural analysis was done by a panel of language specialists who first listed all structures found in the Soldier's Manual for this MOS and then all structures, standard and non-standard, noted on the Observation Forms for all vocabulary from the Soldier's Manual. All lists were then combined into an overall lexical and structural inventory.

SUMMARY/CONCLUSION:

The tools for data gathering were:

1. The Task Prioritization Checklist (Appendix 1)
2. The Task Inventory Compiled Data Form (Appendix 2)
3. The Observation Form (Appendix 4)
4. A Structural and Lexical Inventory (consisting of rough drafts of all vocabulary and structures in this MOS).

These tools were used to form the data pool from which the Job Language Requirements were determined.

SECTION II

DETERMINATION OF ENGLISH
LANGUAGE SKILLS

INTRODUCTION

This section discusses the organization of the raw data into information used to determine the English language skills pertinent to this MOS.

SECTION II: DETERMINATION OF ENGLISH LANGUAGE SKILLS

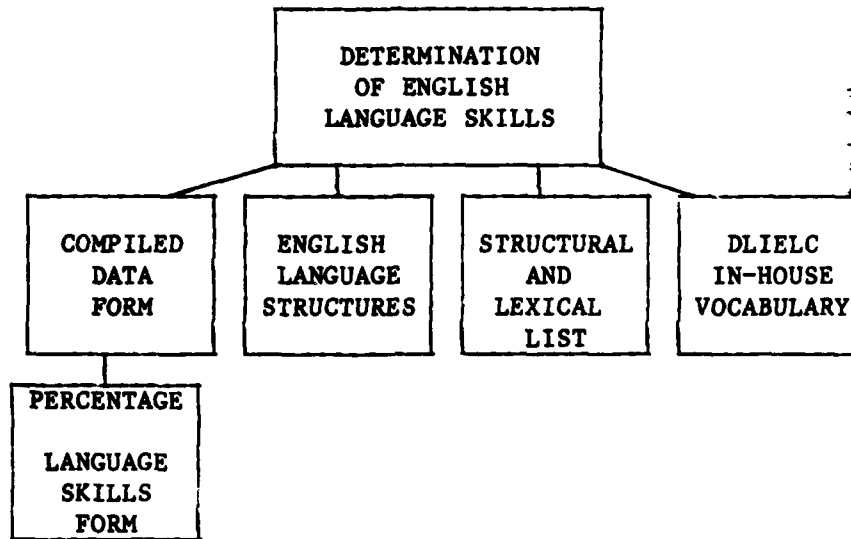


FIGURE 3

The raw data collected as described in Section II above was used to determine the English Language skills which the soldier must learn to learn and perform the task. The Compiled Data Form, Appendix 2, was used to organize the observation and analysis data. Selected information from the Task Prioritization Checklist was recorded directly on this form. Specifically three variables were used to determine the language skills involved. They were:

1. Methods of teaching.
2. Methods of testing.
3. The actual respondents' ratings of the four English language skills.

From each of the three variables the following skills were determined:

VARIABLE	ENGLISH LANGUAGE SKILLS
Methods of Teaching demonstration lecture hands on self-paced	listening, listening, writing, listening reading, writing

Methods of Testing performance oral written	listening speaking writing, reading
Rating of English Language Skills listening speaking reading writing	*a response of 2 or 3 on a scale of 1 to 3 was tallied a response of 1, 2, or 3 on a scale of 1 to 5 was tallied

*See A1

In order to determine the relations of the various skills in the MOS, data from the three variables were tallied on the Percentage Language Skills Form. An average was then found using the following formula:

$$TR \div TxVxR = \% \text{ of use}$$

T = total number of tasks per cluster

V = language skill variable per cluster**

R = maximum number of respondents in any task in that cluster

TR = total tally of responses per task per skill

% of use = use of the language skill in the task

Percentages found in this MOS were:

Listening	47%
Speaking	28%
Reading	32%
Writing	30%

As shown by the figures, listening is the most important skill in this MOS. However, in particular duty sections, percentages varied. Appendix 3, the Percentage Language Skills Form, shows the actual skill percentages in each duty position.

**See A3

Organization of structural and lexical items was done by comparing a structural and lexical list extracted from the Soldier's Manual with a structural inventory list extracted from ALC (American Language Center) materials through Volume 2400, at the end of which a trainee is normally qualified for Specialized English Technical Terminology training. By comparing the lists redundancies were eliminated, leaving the final list of structural and lexical items indicated by grammatical title in Appendix 5.

SUMMARY/CONCLUSION:

Organization of the data included the recording of responses on the Task Inventory Compiled Data Form, use of the Percentage Language Skills Form, and the DLIELC in-house structural analysis list. Skills were analyzed by duty section. The actual lexical items in this MOS were grouped and listed task by task. This information was then used to determine the specific Job Language Performance Requirements.

SECTION III

CLUSTERING OF COMMON
AND DUTY POSITION TASKS

INTRODUCTION

Due to the overlapping of certain elements among the various MOS, tasks were clustered in order to prevent duplication of effort for each MOS.

This section contains a listing of the clusters for this MOS.

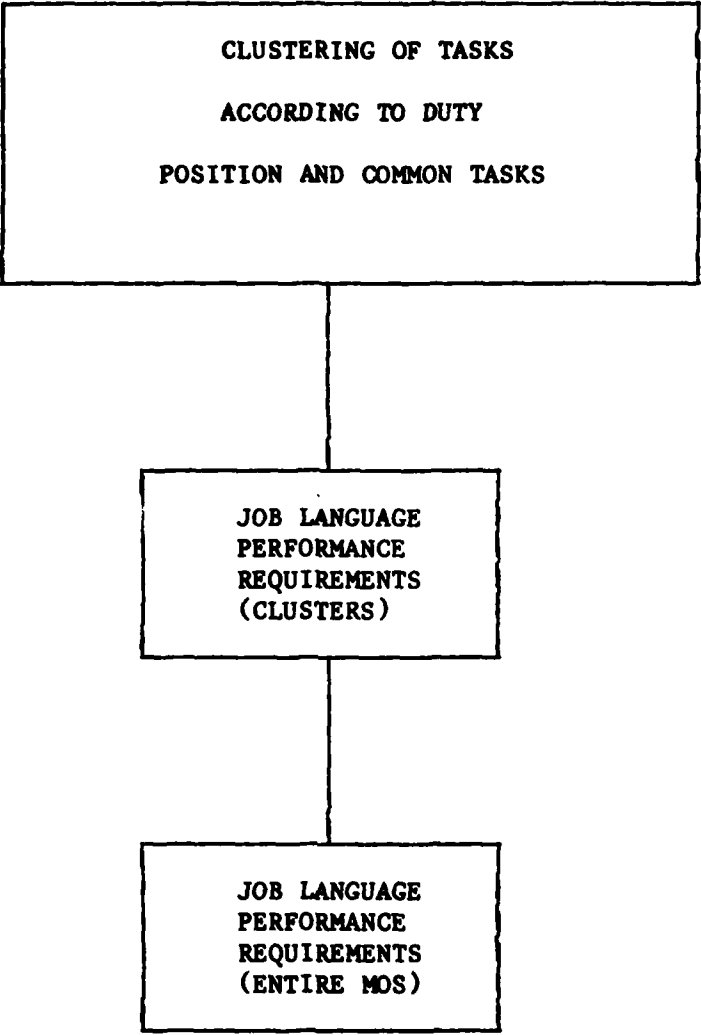


FIGURE 4

SECTION III: CLUSTERING OF COMMON AND DUTY POSITION TASKS

Clustering was done by using the common and duty position tasks in the Soldier's Manual.

The following clusters are in this MOS:

1. FIRST AID
2. NUCLEAR, BIOLOGICAL AND CHEMICAL OPERATIONS
3. INDIVIDUAL FITNESS
4. BASIC INDIVIDUAL TECHNIQUES
5. M16A1 RIFLE
6. MAINTENANCE
7. SUPPLY AND ADMINISTRATIVE DUTIES
8. ARMS AND AMMUNITION
9. PROPERTY BOOK MANAGEMENT

SECTION IV

JOB LANGUAGE
PERFORMANCE REQUIREMENTS

INTRODUCTION

This section discusses the format for the Job Language Performance Requirements.

SECTION IV: JOB LANGUAGE PERFORMANCE REQUIREMENTS

The format for the Job Language Performance Requirements is:

TASK:

CONDITION:

STANDARD:

A. TASK

The Job Language Performance Requirements state the language tasks the soldier must do in studying/performing specific MOS job tasks. A task addressing language would be one of reading, listening, speaking or writing. Job tasks, as seen in the Soldier's Manual, are those which pertain to the soldier's duties. To write these as language tasks required the following explanations of what the soldier would speak, read, listen and write. Below are the kinds of explanations that had to be made in this MOS.

SPEAKING

Produces oral utterances to report/inform/explain/elicite response/respond.

Analysis of this MOS indicates verbal reports entailing those activities directly related to the soldier's job tasks.

The speaking act to respond or elicit response in this MOS is an oral response to a command or visual signal.

Speaking to explain involves situations of instruction in any training situation.

Speaking to inform involves producing oral utterances to communicate necessary information.

READING

Read for information/to learn.

Printed and written materials are used throughout this MOS. The soldier is expected to read technical manuals, field manuals, soldier's manual, written communication and audio-visual aids. Content of these materials is presented in formats and styles ranging from simple factual words or sentences to complex passages containing highly technical vocabulary, often with ellipsis. The purpose is to teach the student, so the student reads them to learn. Reading to learn involves reading names, attributes, information, procedures, explanations of how systems work, concepts, vocabulary terms, and definitions which are committed to short or long term memory for immediate or later recognition.

Basically, the soldier will use these reading materials to supplement what is stated in a lecture by integrating the information from the different texts or written communiques into his understanding of the previous lecture.

The soldier must develop the ability to understand the words in context, to read in thought units, and then select and understand the main ideas. The soldier must retain, apply, and integrate these ideas with past experience to use in his MOS.

Reading to learn, then, is a synthesis. What is read is to be retained in memory for integration in new experiences.

Reading for information, on the other hand, is quite different. The read material is to be retained only in short term memory, used for a specific purpose (i.e., look up a metric equivalent of 37 pounds) and then forgotten.

LISTENING

Listen to oral information to learn/to report.

In this MOS, lecture is a main method of instruction. The lecture is often supplemented by a demonstration. The soldier listens to the lecture to learn data pertinent to the task. Analysis of lecture presentations indicated many language variables. The soldier hears sub-standard usages, various registers of style and formality, colloquialisms, even profanity, in situations ranging from a barracks to a field. The soldier must differentiate between the types of language functions. Is it expression, exchange, description, explanation, argumentation, persuasion, statement, request, or order? The oral information may be directly from the speaker and/or indirectly such as over the telephone, radio, TV, or tape. The soldier must organize and gain meaning from what is heard. Out of all these variables, the soldier must identify or infer the main ideas or major points.

Analysis of this MOS did not and could not specify all types of spontaneous language the soldier would be exposed to. The POI, though, does show the general form of the constrained oral language the soldier must listen to in order to learn the task.

B. CONDITIONS

The condition is what the soldier will be given in order to do the task. For the MOS job, the soldier is given paper, pencil, and printed materials. For language purposes, he will be given certain structural and lexical features as found through the data gathering and organizing from interviews and observations. Again, for the job that the soldier will be given, the material may be under normal working conditions, though other conditions may be added such as with or without protective gear or in darkness.

The soldier will read lists, tables, procedures, checklists or signs, and will hear scenarios, lectures, explanations, and commands. Therefore, these are listed with the Job Language Performance Requirements as possible conditions.

C. STANDARDS

The standard for our purpose is 100%. A standard for understanding or speaking cannot be tested as saying the soldier will disassemble a .45 caliber pistol in eight minutes. Because of this, 100% understandable speech or 100% legibility is used as a reference.

SUMMARY/CONCLUSION:

The Job Language Performance Requirements including tasks, conditions, and standards, were first written for each task cluster. The clusters were then combined into the Job Language Performance Requirements for the entire MOS.

SECTION V

JOB LANGUAGE PERFORMANCE REQUIREMENTS
(CLUSTERED)

INTRODUCTION

Sections I, II, III, and IV described how Job Language Performance Requirements were identified and constructed.

This section contains the Job Language Performance Requirements for each task cluster pertinent to this MOS.

FIRST AID

I. PERCENTAGE LANGUAGE SKILLS

Listening	40%
Speaking	24%
Reading	22%
Writing	21%

II. JOB LANGUAGE PERFORMANCE REQUIREMENTS

TASK: Listen to learn
CONDITIONS: Given oral instructions in any training situation (Appendix 4), using standard and non-standard structural and lexical items (Appendices 5 & 7)
STANDARDS: 100% understanding of oral communication

TASK: Listen to respond
CONDITIONS: Given a medical scenario involving simple questions about an illness in any training situation (Appendix 4), using standard and non-standard structural and lexical items (Appendices 5 & 7)
STANDARDS: 100% understanding of oral utterances

TASK: Produce oral utterances to explain
CONDITIONS: Given a simple medical scenario requiring an oral interpretation in any training situation (Appendix 4), using standard and non-standard structural and lexical items (Appendices 5 & 7)
STANDARDS: 100% understandable oral communication

TASK: Produce appropriate oral responses spontaneously or upon request
CONDITIONS: Given any verbal stimulus in the form of questions, scenarios or instructions in any training situation (Appendix 4), using standard and non-standard structural and lexical items (Appendices 5 & 7)
STANDARDS: 100% understandable oral responses

TASK: Read for information
CONDITIONS: Given printed MOS training materials in the form of instructions, captioned illustrations, explanations and procedures
STANDARDS: 100% understanding of printed content

III. TASK NUMBERS AND TITLES

081-831-1001	Perform Mouth-To-Mouth Resuscitation
081-831-1002	Perform Cardiopulmonary Resuscitation (CPR) Using One-Man Method
081-831-1004	Apply First Aid Measures To Stop Bleeding

081-831-1005 Give First Aid To Prevent Shock
081-831-1006 Splint A Suspected Fracture
081-831-1007 Give First Aid For Burns
081-831-1008 Give First Aid For Heat Injuries
081-831-1009 Give First Aid For Wet Or Cold Injuries
081-831-1010 Give First Aid For Snakebite

NUCLEAR, BIOLOGICAL AND CHEMICAL OPERATIONS

I. PERCENTAGE LANGUAGE SKILLS

Listening 44%
Speaking 30%
Reading 19%
Writing 20%

II. JOB LANGUAGE PERFORMANCE REQUIREMENTS

TASK: Listen for information
CONDITIONS: Given oral instructions to perform task specific assignments in any training situation (Appendix 4), using standard and non-standard structural and lexical items (Appendices 5 & 7)
STANDARDS: 100% understanding of oral information

TASK: Produce appropriate oral responses spontaneously or upon request
CONDITIONS: Given any verbal stimulus in the form of questions, scenarios or instructions in any training situation (Appendix 4), using standard and non-standard structural and lexical items (Appendices 5 & 7)
STANDARDS: 100% understandable oral responses

TASK: Read for information
CONDITIONS: Given printed MOS training materials in the form of instructions, captioned illustrations, explanations and procedures
STANDARDS: 100% understanding of printed content

III. TASK NUMBERS AND TITLES

031-503-1001 Perform Operator's Maintenance On An M17 Series Protective Mask
031-503-1002 Put On And Wear A Protective Mask
031-503-1004 Recognize And Protect Self Against A CB Hazard
031-503-1005 Recognize And Protect Self Against A Nuclear Hazard
031-503-1006 Give Visual, Vocal, And/Or Sound Alarms For Chemical Or Biological Attack
031-503-1007 Decontaminate Self
031-503-1008 Decontaminate Individual Equipment
031-503-1009 Satisfy Personal Needs In A Chemical Environment
081-831-1011 Give First Aid To A Nerve Agent Casualty
081-831-1012 Give First Aid To A Blister Agent Casualty
081-831-1013 Give First Aid To A Blood Agent Casualty
081-831-1015 Give Back-Pressure Armlift Artificial Resuscitation To A Chemical Agent Casualty

INDIVIDUAL FITNESS

I. PERCENTAGE LANGUAGE SKILLS

Listening	42%
Speaking	14%
Reading	18%
Writing	20%

II. JOB LANGUAGE PERFORMANCE REQUIREMENTS

TASK: Listen to learn and perform
CONDITIONS: Given oral instructions or verbal commands in any training situation (Appendix 4), using standard and non-standard structural and lexical items (Appendices 5 & 7)
STANDARDS: 100% understanding of oral communication

III. TASK NUMBERS AND TITLES

071-327-0201 Maintain An Appropriate Level Of Physical Fitness (male only)
071-327-0210 Maintain An Appropriate Level Of Physical Fitness (female only)

BASIC INDIVIDUAL TECHNIQUES

I. PERCENTAGE LANGUAGE SKILLS

Listening	36%
Speaking	28%
Reading	25%
Writing	23%

II. JOB LANGUAGE PERFORMANCE REQUIREMENTS

TASK: Listen to learn and perform
CONDITIONS: Given oral instructions or verbal commands in any training situation (Appendix 4), using standard and non-standard structural and lexical items (Appendices 5 & 7)
STANDARDS: 100% understanding of oral communication

TASK: Produce oral utterances to warn
CONDITIONS: Given a requirement to utter verbal warnings in any training situation (Appendix 4), using standard and non-standard structural and lexical items (Appendices 5 & 7)
STANDARDS: 100% understandable oral utterances

TASK: Read to learn
CONDITIONS: Given printed MOS training materials in the form of warnings, procedures, instructions and references
STANDARDS: 100% understanding of printed content

III. TASK NUMBERS AND TITLES

081-831-1001	Disinfect Water For Drinking (Canteen)
071-331-0807	Enforce Noise, Light, And Litter Discipline

M16A1 RIFLE

I. PERCENTAGE LANGUAGE SKILLS

Listening	69%
Speaking	37%
Reading	34%
Writing	33%

II. JOB LANGUAGE PERFORMANCE REQUIREMENTS

TASK: Listen to learn and perform
CONDITIONS: Given oral instructions or verbal commands in any training situation (Appendix 4), using standard and non-standard structural and lexical items (Appendices 5 & 7)
STANDARDS: 100% understanding of oral communication

TASK: Produce appropriate oral responses spontaneously or upon request
CONDITIONS: Given any verbal stimulus in the form of questions, scenarios or instructions in any training situation (Appendix 4), using standard and non-standard structural and lexical items (Appendices 5 & 7)
STANDARDS: 100% understandable oral responses

TASK: Produce oral utterances to inform and respond
CONDITIONS: Given a requirement to make a verbal report in any training situation (Appendix 4), using standard and non-standard structural and lexical items (Appendices 5 & 7)
STANDARDS: 100% understandable oral utterances

TASK: Read for information
CONDITIONS: Given printed MOS training materials in the form of a range card
STANDARDS: 100% understanding of printed content

TASK: Write to record
CONDITIONS: Given a requirement to complete a range card
STANDARDS: 100% understandable and legible written content

TASK: Write to inform
CONDITIONS: Given a requirement to write in any training situation (Appendix 4), using standard and non-standard structural and lexical items (Appendices 5 & 7)
STANDARDS: 100% understandable and legible written content

III. TASK NUMBERS AND TITLES

071-311-2001	Perform Operator Maintenance On An M16A1 Rifle, Magazine, And Ammunition
071-311-1007	Qualify With The M16A1 Rifle

MAINTENANCE

I. PERCENTAGE LANGUAGE SKILLS

Listening	68%
Speaking	27%
Reading	38%
Writing	31%

II. JOB LANGUAGE PERFORMANCE REQUIREMENTS

TASK: Listen to learn
CONDITIONS: Given oral instructions in any training situation (Appendix 4), using standard and non-standard structural and lexical items (Appendices 5 & 7)
STANDARDS: 100% understanding of oral communication

TASK: Listen to learn and perform
CONDITIONS: Given oral instructions or verbal commands in any training situation (Appendix 4), using standard and non-standard structural and lexical items (Appendices 5 & 7)
STANDARDS: 100% understanding of oral communication

TASK: Produce appropriate oral responses spontaneously or upon request
CONDITIONS: Given any verbal stimulus in the form of questions, scenarios or instructions in any training situation (Appendix 4), using standard and non-standard structural and lexical items (Appendices 5 & 7)
STANDARDS: 100% understandable oral responses

TASK: Read for information
CONDITIONS: Given printed MOS training materials in the form of instructions, charts, tables, captioned illustrations, explanations and procedures
STANDARDS: 100% understanding of printed content

TASK: Write to record and report
CONDITIONS: Given the requirement to complete forms and logs and produce written reports
STANDARDS: 100% understandable and legible written content

III. TASK NUMBERS AND TITLES

551-721-1007	Perform Before-Operation Maintenance
551-721-1008	Perform During-Operation Maintenance
551-721-1009	Perform After-Operation Maintenance

SUPPLY AND ADMINISTRATIVE DUTIES

I. PERCENTAGE LANGUAGE SKILLS

Listening	37%
Speaking	31%
Reading	48%
Writing	40%

II. JOB LANGUAGE PERFORMANCE REQUIREMENTS

TASK: Listen to learn and perform
CONDITIONS: Given oral instructions and a brief oral message in any training situation (Appendix 4), using standard and non-standard structural and lexical items (Appendices 5 & 7)
STANDARDS: 100% understanding of oral information

TASK: Produce appropriate oral responses spontaneously or upon request
CONDITIONS: Given any verbal stimulus in the form of questions, scenarios or instructions in any training situation (Appendix 4), using standard and non-standard structural and lexical items (Appendices 5 & 7)
STANDARDS: 100% understandable oral responses

TASK: Read to learn
CONDITIONS: Given printed MOS training materials in the form of captioned illustrations, warnings, procedures and references
STANDARDS: 100% understanding of printed content

TASK: Read to learn
CONDITIONS: Given printed MOS training materials in the form of procedures, descriptions, tables and SOPs
STANDARDS: 100% understanding of printed content

TASK: Write to record and report
CONDITIONS: Given the requirement to complete forms and logs and produce written reports
STANDARDS: 100% understandable and legible written content

III. TASK NUMBERS AND TITLES

121-004-1227	Establish Functional Files
121-004-1228	File Documents/Correspondence
121-004-1415	Post Regulations And Directives
101-521-1101	Process Personal And Organizational Laundry
101-521-1102	Prepare And Process Personal Clothing Request
101-521-1103	Prepare And Maintain Organization Clothing And Equipment Record
101-521-1151	Order Supplies And Equipment
101-521-1152	Request Supply Status For High-Priority Requests (Issue-Priority Designators 01 Through 08)
101-521-1153	Cancel Supply Requests

101-521-1154 Receive Supplies And Equipment
 101-521-1155 Issue Supplies And Equipment To Hand Receipt Holders
 101-521-1156 Store Selected Supplies and Equipment
 In Unit Storage Areas
 101-521-1157 Maintain Due-in Status File For Requested Items
 101-521-1158 Prepare And Maintain Hand Receipt Files
 101-521-1159 Turn In Supplies And Equipment
 - 101-521-1160 Transfer Supplies And Equipment
 - 101-521-1163 Prepare And Maintain A Document Register
 - 101-521-1164 Update Signature Cards (Notice Of Delegation Of
 Authority-Receipt For Supplies)
 101-521-2171 Inventory Sets, Kits, And Outfits; Basic Issue Items;
 And Additional Authorization List Items
 101-521-2201 Review Supply And Shipment Status List Or Cards
 101-521-2202 Plan For The Storage Of Supplies (Classes I, III, and V)
 101-521-2252 Prepare Equipment Transfer, Loss, Or Gain Reports
 101-521-2301 Perform Editing Operations
 101-521-2302 Process Documents From The Daily, Weekly, And Monthly
 cycles

ARMS AND AMMUNITION

I. PERCENTAGE LANGUAGE SKILLS

Listening	49%
Speaking	35%
Reading	41%
Writing	37%

II. JOB LANGUAGE PERFORMANCE REQUIREMENTS

TASK: Listen to learn and perform
CONDITIONS: Given oral instructions or verbal commands in any training situation (Appendix 4), using standard and non-standard structural and lexical items (Appendices 5 & 7)
STANDARDS: 100% understanding of oral communication

TASK: Produce oral utterances to inform
CONDITIONS: Given a requirement to make a verbal report in any training situation (Appendix 4), using standard and non-standard structural and lexical items (Appendices 5 & 7)
STANDARDS: 100% understandable oral utterances

TASK: Read to learn
CONDITIONS: Given printed MOS training materials in the form of procedures, descriptions, tables and SOPs
STANDARDS: 100% understanding of printed content

TASK: Write to record and report
CONDITIONS: Given a requirement to complete forms and logs
STANDARDS: 100% understandable and legible written content

III. TASK NUMBERS AND TITLES

101-521-1201	Control Weapons And Ammunition In Security Areas
101-521-1202	Maintain Control Register For Weapons Storage Area
101-521-1203	Issue And Receive Unit Weapons
101-521-1204	Perform Preventive Maintenance On Assigned Weapons
101-521-1205	Repair An M3A1 Submachinegun
101-521-1206	Repair An M1911A1 Pistol (.45 Caliber)
101-521-1207	Repair An M60 Machinegun
101-521-1208	Repair An M16A1 Rifle
101-521-1209	Repair An M203 Grenade Launcher
101-521-1210	Repair An M2 Machinegun
101-521-2101	Direct The Control And Security Of Weapons And Ammunition In Unit Storage Areas
101-521-2102	Inspect Organizational Maintenance Of Weapons
101-521-2161	Request Ammunition
101-521-2162	Turn In Ammunition, Casings, And Residue

PROPERTY BOOK MANAGEMENT

I. PERCENTAGE LANGUAGE SKILLS

-	Listening	37%
-	Speaking	26%
-	Reading	46%
-	Writing	44%

II. JOB LANGUAGE PERFORMANCE REQUIREMENTS

TASK: Listen to learn and perform
CONDITIONS: Given oral instructions or verbal commands in any training situation (Appendix 4), using standard and non-standard structural and lexical items (Appendices 5 & 7)
STANDARDS: 100% understanding of oral communication

TASK: Produce oral utterances to inform
CONDITIONS: Given a requirement to make a verbal report in any training situation (Appendix 4), using standard and non-standard structural and lexical items (Appendices 5 & 7)
STANDARDS: 100% understandable oral utterances.

TASK: Read to learn
CONDITIONS: Given printed MOS training materials in the form of procedures, descriptions, tables and SOPs
STANDARDS: 100% understanding of printed content

TASK: Write to record and report
CONDITIONS: Given the requirement to complete forms and logs and produce written reports
STANDARDS: 100% understandable and legible written content

III. TASK NUMBERS AND TITLES

101-521-2151	Prepare A Property Book
101-521-2152	Manually Maintain A Property Book
101-521-2153	Conduct Inventories Of Property Book Items
101-521-2154	Determine Method Of Obtaining Relief From Responsibility For Lost, Damaged, And Destroyed Property
101-521-2155	Process A Cash Sale For Handtools
101-521-2156	Prepare And Process A Statement Of Charges
101-521-2158	Prepare And Process A Cash Collection Voucher (CCV)
101-521-2159	Prepare And Process Reports Of Survey

SECTION VI

JOB LANGUAGE PERFORMANCE
REQUIREMENTS
(Entire MOS)

INTRODUCTION

This section contains language tasks for each generic skill for this MOS. Listed below each task are the types of receptive or productive language activity involved.

LISTENING

- TASK:** Understand oral language intended to inform or instruct.
- CONDITIONS:** Given explanations, procedures, rules, instructions or definitions in simple to complex lexicon and syntax; formal or informal registers, casual or colloquial speech, military jargon, slang or dialectical speech in any training situation. (Appendices 4, 5 & 6)
- STANDARDS:** 100% understanding and assimilation of presented oral language task.

The following are specific conditions found in this language task:

Warnings
Described situations
Directions
Lectures
Commands, Orders
Sound tracks (films, tapes)
Standard/Non-standard English
Instructions
SQT questions

- TASK:** Understand spontaneous oral language or language via a technical medium - such as a radio telephone - intended to inform and elicit responses.
- CONDITIONS:** Given scenarios, questions, commands or requests in simple to complex lexicon and syntax, formal or informal registers, casual or colloquial speech, military jargon, slang or dialectical speech in any training situation. (Appendices 4, 5, & 6)
- STANDARDS:** 100% understanding and assimilation of oral language in order to apply and respond.

The following are specific conditions found in this language task:

Shouting
Radio communications
Coded messages
Spellings
Conversation
Requests

SPEAKING

- TASK:** Formulate and produce appropriate oral responses spontaneously.
- CONDITIONS:** Given any verbal stimulus in the form of questions, scenarios, instructions, or cues in any training situation.
(Appendices 5 & 6)
- STANDARDS:** 100% understandable oral response using correct lexicon and syntax for the training situation.

The following are specific conditions found in the language task:

Explanations
Statements
Repetitions
Counting
Corrections
Assignments
Notifications
Oral reports
Answers
Clarifications
Information

- TASK:** Produce oral utterances to interact and communicate spontaneously or via a technical medium such as radio telephone.
- CONDITIONS:** Given a communicative situation (Appendices 4, 5, & 6 Soldier's Manual) in any training situation.
- STANDARDS:** 100% understandable communication using correct lexicon and syntax for the communication act.

The following are specific conditions found in this language task:

Requesting information
Requesting permission
Transmitting messages
Call signs
Vocal signals
Shout warnings
Radio communications
Target locations
Directions (N,S,E,W)
Directions, general
Requests for fire
Report on the results of fire
Challenges/Passwords
Training sessions
Interaction

READING

TASK: Read MOS training in the form of printed prose or graphic representations in order to learn processes, concepts, vocabulary, definitions and identifications, to calculate problems, intercept codes and complete forms.

CONDITIONS: Given technical, non-technical, lexical and structural features in simple to complex printed form in any training situation.
(Appendices 4, 5 & 6)

STANDARDS: 100% understanding of printed content.

The following are specific conditions found in this language task:
Captions with illustrations.

Lists	Extracts
Procedures	Columns
Information	Indices
Definitions	Charts
Outlines	Methods
Signs	Technical Vocabulary
Markers	Standard Operating Procedures
References	Cartoons
Rules	Problems
Maps	Manuals
Flags	Graphic Training Aids
Military Documents	
I.D. Papers	
Regulations	

TASK: Identify, understand, and interpret written utterances pertinent to MOS training in technical or non-technical language.

CONDITIONS: Given technical, non-technical, lexical and structural features in simple to complex written form in any training situation.
(Appendices 4, 5 & 6)

STANDARDS: 100% understanding of written content.

The following are specific conditions found in this language task:

Lists
Information
Descriptions
Radiation readings off dosimeter
Coordinate scales
Callsigns-suffices
Three-letter codes
Examples
Calculations
Markings
Radio communications
Range cards
Notes
Messages

APPENDICES

1. Task Prioritization Checklist
2. Task Inventory Compiled Data Forms
3. Percentage Language Skills
4. Observation Form
5. Structural/Lexical list
6. Vocabulary (DLIELC in-house)
7. Vocabulary (machine-generated)
8. English Language Structures

APPENDIX 1

TASK PRIORITIZATION CHECKLIST

This Checklist was approved by the
Department of the Army in 1980.

MOS IN WHICH YOU WERE TRAINED: _____
POSITION: _____
UNIT: _____

3 = high

YES	NO	IS TAUGHT
-----	-----	LISTENING*
-----	-----	SPEAKING*
-----	-----	READING*
-----	-----	WRITING*
-----	-----	LECTURE
-----	-----	SELF-PACED
-----	-----	DEMONSTRATION
-----	-----	HANDS-ON
YES	NO	IS TASK TESTED?
-----	-----	WRITTEN
-----	-----	ORAL
-----	-----	PERFORMANCE
-----	-----	PERSON
-----	-----	DANGER
-----	-----	EQUIPMENT

APPENDIX 2

TASK INVENTORY COMPILED DATA FORM

This form was used to record data from
the Task Prioritization Checklist.

RATING OF ELS	writing																																																		
	reading																																																		
	speaking																																																		
	listening																																																		
METHODS OF TESTING	written																																																		
	oral																																																		
	performance																																																		
METHODS OF TEACHING	self-paced																																																		
	hands-on																																																		
	demonstration																																																		
	lecture																																																		
CRITICALITY	danger to person or																																																		
	equipment																																																		
	importance																																																		
UNIT	difficult?																																																		
	tested?																																																		

RATING OF ELS	writing																																								
	reading																																								
	speaking																																								
	listening																																								
METHODS OF TESTING	written																																								
	oral																																								
	performance																																								
METHODS OF TEACHING	self-paced																																								
	hands-on																																								
	demonstration																																								
	lecture																																								
CRITICALITY	danger to person or																																								
	equipment																																								
	importance																																								
AIT	difficulty?																																								
	tested?																																								
	taught?																																								

TASK NUMBER			031-503-1001			031-503-1002			031-503-1004			031-503-1007			031-503-1010
-------------	--	--	--------------	--	--	--------------	--	--	--------------	--	--	--------------	--	--	--------------

NBC

RATING OF OF ELS	writing																																						
	reading																																						
	speaking																																						
	listening																																						
METHODS OF TESTING	written																																						
	oral																																						
	performance																																						
METHODS OF TEACHING	self-paced																																						
	hands-on																																						
	demonstration																																						
	lecture																																						
CRITICALITY	danger to person or																																						
	equipment																																						
	importance																																						
UNIT	difficult?																																						
	tested?																																						

RATING OF OF ELS	writing																																					
	reading																																					
	speaking																																					
	listening																																					
METHODS OF TESTING	written																																					
	oral																																					
	performance																																					
METHODS OF TEACHING	self-paced																																					
	hands-on																																					
	demonstration																																					
	lecture																																					
CRITICALITY	danger to person or																																					
	equipment																																					
	importance																																					
AIT	difficulty?																																					
	tested?																																					
	taught?																																					

TASK NUMBER _____ 081-831-1011 _____ 081-831-1012 _____ 081-831-1013 _____ 081-831-1015

NBC

RATING OF ELS	writing	/	/	/	/	/	/	/	/	/	/	/	/	/	/	/	/	/	/	/	/	/	/	/	/	/	/	/	/	/	/	/	/	/	/	/	/
	reading	/	/	/	/	/	/	/	/	/	/	/	/	/	/	/	/	/	/	/	/	/	/	/	/	/	/	/	/	/	/	/	/	/	/	/	/
	speaking	/	/	/	/	/	/	/	/	/	/	/	/	/	/	/	/	/	/	/	/	/	/	/	/	/	/	/	/	/	/	/	/	/	/	/	/
	listening	/	/	/	/	/	/	/	/	/	/	/	/	/	/	/	/	/	/	/	/	/	/	/	/	/	/	/	/	/	/	/	/	/	/	/	/
METHODS OF TESTING	written	/	/	/	/	/	/	/	/	/	/	/	/	/	/	/	/	/	/	/	/	/	/	/	/	/	/	/	/	/	/	/	/	/	/	/	/
	oral	/	/	/	/	/	/	/	/	/	/	/	/	/	/	/	/	/	/	/	/	/	/	/	/	/	/	/	/	/	/	/	/	/	/	/	/
	performance	/	/	/	/	/	/	/	/	/	/	/	/	/	/	/	/	/	/	/	/	/	/	/	/	/	/	/	/	/	/	/	/	/	/	/	/
METHODS OF TEACHING	self-paced	/	/	/	/	/	/	/	/	/	/	/	/	/	/	/	/	/	/	/	/	/	/	/	/	/	/	/	/	/	/	/	/	/	/	/	/
	hands-on	/	/	/	/	/	/	/	/	/	/	/	/	/	/	/	/	/	/	/	/	/	/	/	/	/	/	/	/	/	/	/	/	/	/	/	/
	demonstration	/	/	/	/	/	/	/	/	/	/	/	/	/	/	/	/	/	/	/	/	/	/	/	/	/	/	/	/	/	/	/	/	/	/	/	/
	lecture	/	/	/	/	/	/	/	/	/	/	/	/	/	/	/	/	/	/	/	/	/	/	/	/	/	/	/	/	/	/	/	/	/	/	/	/
CRITICALITY	danger to person or equipment	/	/	/	/	/	/	/	/	/	/	/	/	/	/	/	/	/	/	/	/	/	/	/	/	/	/	/	/	/	/	/	/	/	/	/	/
	importance	/	/	/	/	/	/	/	/	/	/	/	/	/	/	/	/	/	/	/	/	/	/	/	/	/	/	/	/	/	/	/	/	/	/	/	/
	unit tested?	/	/	/	/	/	/	/	/	/	/	/	/	/	/	/	/	/	/	/	/	/	/	/	/	/	/	/	/	/	/	/	/	/	/	/	/
UNIT	difficult?	/	/	/	/	/	/	/	/	/	/	/	/	/	/	/	/	/	/	/	/	/	/	/	/	/	/	/	/	/	/	/	/	/	/	/	/
	tested?	/	/	/	/	/	/	/	/	/	/	/	/	/	/	/	/	/	/	/	/	/	/	/	/	/	/	/	/	/	/	/	/	/	/	/	/

RATING OF ELS	writing	/	/	/	/	/	/	/	/	/	/	/	/	/	/	/	/	/	/	/	/	/	/	/	/	/	/	/	/	/	/	/	/	/	/	/	/	
	reading	/	/	/	/	/	/	/	/	/	/	/	/	/	/	/	/	/	/	/	/	/	/	/	/	/	/	/	/	/	/	/	/	/	/	/	/	
	speaking	/	/	/	/	/	/	/	/	/	/	/	/	/	/	/	/	/	/	/	/	/	/	/	/	/	/	/	/	/	/	/	/	/	/	/	/	/
	listening	/	/	/	/	/	/	/	/	/	/	/	/	/	/	/	/	/	/	/	/	/	/	/	/	/	/	/	/	/	/	/	/	/	/	/	/	
METHODS OF TESTING	written	/	/	/	/	/	/	/	/	/	/	/	/	/	/	/	/	/	/	/	/	/	/	/	/	/	/	/	/	/	/	/	/	/	/	/	/	
	oral	/	/	/	/	/	/	/	/	/	/	/	/	/	/	/	/	/	/	/	/	/	/	/	/	/	/	/	/	/	/	/	/	/	/	/	/	
	performance	/	/	/	/	/	/	/	/	/	/	/	/	/	/	/	/	/	/	/	/	/	/	/	/	/	/	/	/	/	/	/	/	/	/	/	/	
METHODS OF TEACHING	self-paced	/	/	/	/	/	/	/	/	/	/	/	/	/	/	/	/	/	/	/	/	/	/	/	/	/	/	/	/	/	/	/	/	/	/	/	/	
	hands-on	/	/	/	/	/	/	/	/	/	/	/	/	/	/	/	/	/	/	/	/	/	/	/	/	/	/	/	/	/	/	/	/	/	/	/	/	
	demonstration	/	/	/	/	/	/	/	/	/	/	/	/	/	/	/	/	/	/	/	/	/	/	/	/	/	/	/	/	/	/	/	/	/	/	/	/	
	lecture	/	/	/	/	/	/	/	/	/	/	/	/	/	/	/	/	/	/	/	/	/	/	/	/	/	/	/	/	/	/	/	/	/	/	/	/	
CRITICALITY	danger to person or equipment	/	/	/	/	/	/	/	/	/	/	/	/	/	/	/	/	/	/	/	/	/	/	/	/	/	/	/	/	/	/	/	/	/	/	/	/	
	importance	/	/	/	/	/	/	/	/	/	/	/	/	/	/	/	/	/	/	/	/	/	/	/	/	/	/	/	/	/	/	/	/	/	/	/	/	
	unit taught?	/	/	/	/	/	/	/	/	/	/	/	/	/	/	/	/	/	/	/	/	/	/	/	/	/	/	/	/	/	/	/	/	/	/	/	/	
AIT	difficulty?	/	/	/	/	/	/	/	/	/	/	/	/	/	/	/	/	/	/	/	/	/	/	/	/	/	/	/	/	/	/	/	/	/	/	/	/	
	tested?	/	/	/	/	/	/	/	/	/	/	/	/	/	/	/	/	/	/	/	/	/	/	/	/	/	/	/	/	/	/	/	/	/	/	/	/	
	taught?	/	/	/	/	/	/	/	/	/	/	/	/	/	/	/	/	/	/	/	/	/	/	/	/	/	/	/	/	/	/	/	/	/	/	/	/	

TASK NUMBER	071-311-2001	071-311-2007	551-1001-155	551-1008
-------------	--------------	--------------	--------------	----------

MIGANI RIFLE AIRMAN/PL

MOS _____ NUMBER OF RESPONDENTS _____
 DATA OBTAINED FROM _____ TRAINING SPECIALIST _____

PAGE _____
 OF _____

RATING OF ELS	writing	<input checked="" type="checkbox"/>	<input checked="" type="checkbox"/>	<input checked="" type="checkbox"/>	<input checked="" type="checkbox"/>	<input checked="" type="checkbox"/>	<input checked="" type="checkbox"/>	<input checked="" type="checkbox"/>	<input checked="" type="checkbox"/>	<input checked="" type="checkbox"/>	<input checked="" type="checkbox"/>	<input checked="" type="checkbox"/>	<input checked="" type="checkbox"/>	<input checked="" type="checkbox"/>	<input checked="" type="checkbox"/>	<input checked="" type="checkbox"/>	<input checked="" type="checkbox"/>	<input checked="" type="checkbox"/>	<input checked="" type="checkbox"/>	<input checked="" type="checkbox"/>	<input checked="" type="checkbox"/>	<input checked="" type="checkbox"/>	<input checked="" type="checkbox"/>	<input checked="" type="checkbox"/>	<input checked="" type="checkbox"/>	<input checked="" type="checkbox"/>	<input checked="" type="checkbox"/>	<input checked="" type="checkbox"/>
	reading	<input checked="" type="checkbox"/>	<input checked="" type="checkbox"/>	<input checked="" type="checkbox"/>	<input checked="" type="checkbox"/>	<input checked="" type="checkbox"/>	<input checked="" type="checkbox"/>	<input checked="" type="checkbox"/>	<input checked="" type="checkbox"/>	<input checked="" type="checkbox"/>	<input checked="" type="checkbox"/>	<input checked="" type="checkbox"/>	<input checked="" type="checkbox"/>	<input checked="" type="checkbox"/>	<input checked="" type="checkbox"/>	<input checked="" type="checkbox"/>	<input checked="" type="checkbox"/>	<input checked="" type="checkbox"/>	<input checked="" type="checkbox"/>	<input checked="" type="checkbox"/>	<input checked="" type="checkbox"/>	<input checked="" type="checkbox"/>	<input checked="" type="checkbox"/>	<input checked="" type="checkbox"/>	<input checked="" type="checkbox"/>	<input checked="" type="checkbox"/>	<input checked="" type="checkbox"/>	<input checked="" type="checkbox"/>
	speaking	<input checked="" type="checkbox"/>	<input checked="" type="checkbox"/>	<input checked="" type="checkbox"/>	<input checked="" type="checkbox"/>	<input checked="" type="checkbox"/>	<input checked="" type="checkbox"/>	<input checked="" type="checkbox"/>	<input checked="" type="checkbox"/>	<input checked="" type="checkbox"/>	<input checked="" type="checkbox"/>	<input checked="" type="checkbox"/>	<input checked="" type="checkbox"/>	<input checked="" type="checkbox"/>	<input checked="" type="checkbox"/>	<input checked="" type="checkbox"/>	<input checked="" type="checkbox"/>	<input checked="" type="checkbox"/>	<input checked="" type="checkbox"/>	<input checked="" type="checkbox"/>	<input checked="" type="checkbox"/>	<input checked="" type="checkbox"/>	<input checked="" type="checkbox"/>	<input checked="" type="checkbox"/>	<input checked="" type="checkbox"/>	<input checked="" type="checkbox"/>	<input checked="" type="checkbox"/>	<input checked="" type="checkbox"/>
	listening	<input checked="" type="checkbox"/>	<input checked="" type="checkbox"/>	<input checked="" type="checkbox"/>	<input checked="" type="checkbox"/>	<input checked="" type="checkbox"/>	<input checked="" type="checkbox"/>	<input checked="" type="checkbox"/>	<input checked="" type="checkbox"/>	<input checked="" type="checkbox"/>	<input checked="" type="checkbox"/>	<input checked="" type="checkbox"/>	<input checked="" type="checkbox"/>	<input checked="" type="checkbox"/>	<input checked="" type="checkbox"/>	<input checked="" type="checkbox"/>	<input checked="" type="checkbox"/>	<input checked="" type="checkbox"/>	<input checked="" type="checkbox"/>	<input checked="" type="checkbox"/>	<input checked="" type="checkbox"/>	<input checked="" type="checkbox"/>	<input checked="" type="checkbox"/>	<input checked="" type="checkbox"/>	<input checked="" type="checkbox"/>	<input checked="" type="checkbox"/>	<input checked="" type="checkbox"/>	<input checked="" type="checkbox"/>
METHODS OF TESTING	written	<input checked="" type="checkbox"/>	<input checked="" type="checkbox"/>	<input checked="" type="checkbox"/>	<input checked="" type="checkbox"/>	<input checked="" type="checkbox"/>	<input checked="" type="checkbox"/>	<input checked="" type="checkbox"/>	<input checked="" type="checkbox"/>	<input checked="" type="checkbox"/>	<input checked="" type="checkbox"/>	<input checked="" type="checkbox"/>	<input checked="" type="checkbox"/>	<input checked="" type="checkbox"/>	<input checked="" type="checkbox"/>	<input checked="" type="checkbox"/>	<input checked="" type="checkbox"/>	<input checked="" type="checkbox"/>	<input checked="" type="checkbox"/>	<input checked="" type="checkbox"/>	<input checked="" type="checkbox"/>	<input checked="" type="checkbox"/>	<input checked="" type="checkbox"/>	<input checked="" type="checkbox"/>	<input checked="" type="checkbox"/>	<input checked="" type="checkbox"/>	<input checked="" type="checkbox"/>	<input checked="" type="checkbox"/>
	oral	<input checked="" type="checkbox"/>	<input checked="" type="checkbox"/>	<input checked="" type="checkbox"/>	<input checked="" type="checkbox"/>	<input checked="" type="checkbox"/>	<input checked="" type="checkbox"/>	<input checked="" type="checkbox"/>	<input checked="" type="checkbox"/>	<input checked="" type="checkbox"/>	<input checked="" type="checkbox"/>	<input checked="" type="checkbox"/>	<input checked="" type="checkbox"/>	<input checked="" type="checkbox"/>	<input checked="" type="checkbox"/>	<input checked="" type="checkbox"/>	<input checked="" type="checkbox"/>	<input checked="" type="checkbox"/>	<input checked="" type="checkbox"/>	<input checked="" type="checkbox"/>	<input checked="" type="checkbox"/>	<input checked="" type="checkbox"/>	<input checked="" type="checkbox"/>	<input checked="" type="checkbox"/>	<input checked="" type="checkbox"/>	<input checked="" type="checkbox"/>	<input checked="" type="checkbox"/>	<input checked="" type="checkbox"/>
	performance	<input checked="" type="checkbox"/>	<input checked="" type="checkbox"/>	<input checked="" type="checkbox"/>	<input checked="" type="checkbox"/>	<input checked="" type="checkbox"/>	<input checked="" type="checkbox"/>	<input checked="" type="checkbox"/>	<input checked="" type="checkbox"/>	<input checked="" type="checkbox"/>	<input checked="" type="checkbox"/>	<input checked="" type="checkbox"/>	<input checked="" type="checkbox"/>	<input checked="" type="checkbox"/>	<input checked="" type="checkbox"/>	<input checked="" type="checkbox"/>	<input checked="" type="checkbox"/>	<input checked="" type="checkbox"/>	<input checked="" type="checkbox"/>	<input checked="" type="checkbox"/>	<input checked="" type="checkbox"/>	<input checked="" type="checkbox"/>	<input checked="" type="checkbox"/>	<input checked="" type="checkbox"/>	<input checked="" type="checkbox"/>	<input checked="" type="checkbox"/>	<input checked="" type="checkbox"/>	<input checked="" type="checkbox"/>
METHODS OF TEACHING	self-paced	<input checked="" type="checkbox"/>	<input checked="" type="checkbox"/>	<input checked="" type="checkbox"/>	<input checked="" type="checkbox"/>	<input checked="" type="checkbox"/>	<input checked="" type="checkbox"/>	<input checked="" type="checkbox"/>	<input checked="" type="checkbox"/>	<input checked="" type="checkbox"/>	<input checked="" type="checkbox"/>	<input checked="" type="checkbox"/>	<input checked="" type="checkbox"/>	<input checked="" type="checkbox"/>	<input checked="" type="checkbox"/>	<input checked="" type="checkbox"/>	<input checked="" type="checkbox"/>	<input checked="" type="checkbox"/>	<input checked="" type="checkbox"/>	<input checked="" type="checkbox"/>	<input checked="" type="checkbox"/>	<input checked="" type="checkbox"/>	<input checked="" type="checkbox"/>	<input checked="" type="checkbox"/>	<input checked="" type="checkbox"/>	<input checked="" type="checkbox"/>	<input checked="" type="checkbox"/>	<input checked="" type="checkbox"/>
	hands-on	<input checked="" type="checkbox"/>	<input checked="" type="checkbox"/>	<input checked="" type="checkbox"/>	<input checked="" type="checkbox"/>	<input checked="" type="checkbox"/>	<input checked="" type="checkbox"/>	<input checked="" type="checkbox"/>	<input checked="" type="checkbox"/>	<input checked="" type="checkbox"/>	<input checked="" type="checkbox"/>	<input checked="" type="checkbox"/>	<input checked="" type="checkbox"/>	<input checked="" type="checkbox"/>	<input checked="" type="checkbox"/>	<input checked="" type="checkbox"/>	<input checked="" type="checkbox"/>	<input checked="" type="checkbox"/>	<input checked="" type="checkbox"/>	<input checked="" type="checkbox"/>	<input checked="" type="checkbox"/>	<input checked="" type="checkbox"/>	<input checked="" type="checkbox"/>	<input checked="" type="checkbox"/>	<input checked="" type="checkbox"/>	<input checked="" type="checkbox"/>	<input checked="" type="checkbox"/>	<input checked="" type="checkbox"/>
	demonstration	<input checked="" type="checkbox"/>	<input checked="" type="checkbox"/>	<input checked="" type="checkbox"/>	<input checked="" type="checkbox"/>	<input checked="" type="checkbox"/>	<input checked="" type="checkbox"/>	<input checked="" type="checkbox"/>	<input checked="" type="checkbox"/>	<input checked="" type="checkbox"/>	<input checked="" type="checkbox"/>	<input checked="" type="checkbox"/>	<input checked="" type="checkbox"/>	<input checked="" type="checkbox"/>	<input checked="" type="checkbox"/>	<input checked="" type="checkbox"/>	<input checked="" type="checkbox"/>	<input checked="" type="checkbox"/>	<input checked="" type="checkbox"/>	<input checked="" type="checkbox"/>	<input checked="" type="checkbox"/>	<input checked="" type="checkbox"/>	<input checked="" type="checkbox"/>	<input checked="" type="checkbox"/>	<input checked="" type="checkbox"/>	<input checked="" type="checkbox"/>	<input checked="" type="checkbox"/>	<input checked="" type="checkbox"/>
	lecture	<input checked="" type="checkbox"/>	<input checked="" type="checkbox"/>	<input checked="" type="checkbox"/>	<input checked="" type="checkbox"/>	<input checked="" type="checkbox"/>	<input checked="" type="checkbox"/>	<input checked="" type="checkbox"/>	<input checked="" type="checkbox"/>	<input checked="" type="checkbox"/>	<input checked="" type="checkbox"/>	<input checked="" type="checkbox"/>	<input checked="" type="checkbox"/>	<input checked="" type="checkbox"/>	<input checked="" type="checkbox"/>	<input checked="" type="checkbox"/>	<input checked="" type="checkbox"/>	<input checked="" type="checkbox"/>	<input checked="" type="checkbox"/>	<input checked="" type="checkbox"/>	<input checked="" type="checkbox"/>	<input checked="" type="checkbox"/>	<input checked="" type="checkbox"/>	<input checked="" type="checkbox"/>	<input checked="" type="checkbox"/>	<input checked="" type="checkbox"/>	<input checked="" type="checkbox"/>	<input checked="" type="checkbox"/>
CRITICALITY	danger to person or	<input checked="" type="checkbox"/>	<input checked="" type="checkbox"/>	<input checked="" type="checkbox"/>	<input checked="" type="checkbox"/>	<input checked="" type="checkbox"/>	<input checked="" type="checkbox"/>	<input checked="" type="checkbox"/>	<input checked="" type="checkbox"/>	<input checked="" type="checkbox"/>	<input checked="" type="checkbox"/>	<input checked="" type="checkbox"/>	<input checked="" type="checkbox"/>	<input checked="" type="checkbox"/>	<input checked="" type="checkbox"/>	<input checked="" type="checkbox"/>	<input checked="" type="checkbox"/>	<input checked="" type="checkbox"/>	<input checked="" type="checkbox"/>	<input checked="" type="checkbox"/>	<input checked="" type="checkbox"/>	<input checked="" type="checkbox"/>	<input checked="" type="checkbox"/>	<input checked="" type="checkbox"/>	<input checked="" type="checkbox"/>	<input checked="" type="checkbox"/>	<input checked="" type="checkbox"/>	<input checked="" type="checkbox"/>
	equipment	<input checked="" type="checkbox"/>	<input checked="" type="checkbox"/>	<input checked="" type="checkbox"/>	<input checked="" type="checkbox"/>	<input checked="" type="checkbox"/>	<input checked="" type="checkbox"/>	<input checked="" type="checkbox"/>	<input checked="" type="checkbox"/>	<input checked="" type="checkbox"/>	<input checked="" type="checkbox"/>	<input checked="" type="checkbox"/>	<input checked="" type="checkbox"/>	<input checked="" type="checkbox"/>	<input checked="" type="checkbox"/>	<input checked="" type="checkbox"/>	<input checked="" type="checkbox"/>	<input checked="" type="checkbox"/>	<input checked="" type="checkbox"/>	<input checked="" type="checkbox"/>	<input checked="" type="checkbox"/>	<input checked="" type="checkbox"/>	<input checked="" type="checkbox"/>	<input checked="" type="checkbox"/>	<input checked="" type="checkbox"/>	<input checked="" type="checkbox"/>	<input checked="" type="checkbox"/>	<input checked="" type="checkbox"/>
	importance	<input checked="" type="checkbox"/>	<input checked="" type="checkbox"/>	<input checked="" type="checkbox"/>	<input checked="" type="checkbox"/>	<input checked="" type="checkbox"/>	<input checked="" type="checkbox"/>	<input checked="" type="checkbox"/>	<input checked="" type="checkbox"/>	<input checked="" type="checkbox"/>	<input checked="" type="checkbox"/>	<input checked="" type="checkbox"/>	<input checked="" type="checkbox"/>	<input checked="" type="checkbox"/>	<input checked="" type="checkbox"/>	<input checked="" type="checkbox"/>	<input checked="" type="checkbox"/>	<input checked="" type="checkbox"/>	<input checked="" type="checkbox"/>	<input checked="" type="checkbox"/>	<input checked="" type="checkbox"/>	<input checked="" type="checkbox"/>	<input checked="" type="checkbox"/>	<input checked="" type="checkbox"/>	<input checked="" type="checkbox"/>	<input checked="" type="checkbox"/>	<input checked="" type="checkbox"/>	<input checked="" type="checkbox"/>
UNIT	difficult?	<input checked="" type="checkbox"/>	<input checked="" type="checkbox"/>	<input checked="" type="checkbox"/>	<input checked="" type="checkbox"/>	<input checked="" type="checkbox"/>	<input checked="" type="checkbox"/>	<input checked="" type="checkbox"/>	<input checked="" type="checkbox"/>	<input checked="" type="checkbox"/>	<input checked="" type="checkbox"/>	<input checked="" type="checkbox"/>	<input checked="" type="checkbox"/>	<input checked="" type="checkbox"/>	<input checked="" type="checkbox"/>	<input checked="" type="checkbox"/>	<input checked="" type="checkbox"/>	<input checked="" type="checkbox"/>	<input checked="" type="checkbox"/>	<input checked="" type="checkbox"/>	<input checked="" type="checkbox"/>	<input checked="" type="checkbox"/>	<input checked="" type="checkbox"/>	<input checked="" type="checkbox"/>	<input checked="" type="checkbox"/>	<input checked="" type="checkbox"/>	<input checked="" type="checkbox"/>	<input checked="" type="checkbox"/>
	tested?	<input checked="" type="checkbox"/>	<input checked="" type="checkbox"/>	<input checked="" type="checkbox"/>	<input checked="" type="checkbox"/>	<input checked="" type="checkbox"/>	<input checked="" type="checkbox"/>	<input checked="" type="checkbox"/>	<input checked="" type="checkbox"/>	<input checked="" type="checkbox"/>	<input checked="" type="checkbox"/>	<input checked="" type="checkbox"/>	<input checked="" type="checkbox"/>	<input checked="" type="checkbox"/>	<input checked="" type="checkbox"/>	<input checked="" type="checkbox"/>	<input checked="" type="checkbox"/>	<input checked="" type="checkbox"/>	<input checked="" type="checkbox"/>	<input checked="" type="checkbox"/>	<input checked="" type="checkbox"/>	<input checked="" type="checkbox"/>	<input checked="" type="checkbox"/>	<input checked="" type="checkbox"/>	<input checked="" type="checkbox"/>	<input checked="" type="checkbox"/>	<input checked="" type="checkbox"/>	<input checked="" type="checkbox"/>

MOS _____ NUMBER OF RESPONDENTS _____
 DATA OBTAINED FROM _____ TRAINING SPECIALIST _____

RATING OF ELS	writing	<input type="checkbox"/>	<input type="checkbox"/>	<input type="checkbox"/>	<input type="checkbox"/>	<input type="checkbox"/>	<input type="checkbox"/>	<input type="checkbox"/>	<input type="checkbox"/>	<input type="checkbox"/>	<input type="checkbox"/>	<input type="checkbox"/>	<input type="checkbox"/>	<input type="checkbox"/>	<input type="checkbox"/>	<input type="checkbox"/>	<input type="checkbox"/>	<input type="checkbox"/>	<input type="checkbox"/>	<input type="checkbox"/>	<input type="checkbox"/>	<input type="checkbox"/>	<input type="checkbox"/>	<input type="checkbox"/>	<input type="checkbox"/>	<input type="checkbox"/>	<input type="checkbox"/>	<input type="checkbox"/>
	reading	<input type="checkbox"/>	<input type="checkbox"/>	<input type="checkbox"/>	<input type="checkbox"/>	<input type="checkbox"/>	<input type="checkbox"/>	<input type="checkbox"/>	<input type="checkbox"/>	<input type="checkbox"/>	<input type="checkbox"/>	<input type="checkbox"/>	<input type="checkbox"/>	<input type="checkbox"/>	<input type="checkbox"/>	<input type="checkbox"/>	<input type="checkbox"/>	<input type="checkbox"/>	<input type="checkbox"/>	<input type="checkbox"/>	<input type="checkbox"/>	<input type="checkbox"/>	<input type="checkbox"/>	<input type="checkbox"/>	<input type="checkbox"/>	<input type="checkbox"/>	<input type="checkbox"/>	<input type="checkbox"/>
	speaking	<input type="checkbox"/>	<input type="checkbox"/>	<input type="checkbox"/>	<input type="checkbox"/>	<input type="checkbox"/>	<input type="checkbox"/>	<input type="checkbox"/>	<input type="checkbox"/>	<input type="checkbox"/>	<input type="checkbox"/>	<input type="checkbox"/>	<input type="checkbox"/>	<input type="checkbox"/>	<input type="checkbox"/>	<input type="checkbox"/>	<input type="checkbox"/>	<input type="checkbox"/>	<input type="checkbox"/>	<input type="checkbox"/>	<input type="checkbox"/>	<input type="checkbox"/>	<input type="checkbox"/>	<input type="checkbox"/>	<input type="checkbox"/>	<input type="checkbox"/>	<input type="checkbox"/>	<input type="checkbox"/>
	listening	<input type="checkbox"/>	<input type="checkbox"/>	<input type="checkbox"/>	<input type="checkbox"/>	<input type="checkbox"/>	<input type="checkbox"/>	<input type="checkbox"/>	<input type="checkbox"/>	<input type="checkbox"/>	<input type="checkbox"/>	<input type="checkbox"/>	<input type="checkbox"/>	<input type="checkbox"/>	<input type="checkbox"/>	<input type="checkbox"/>	<input type="checkbox"/>	<input type="checkbox"/>	<input type="checkbox"/>	<input type="checkbox"/>	<input type="checkbox"/>	<input type="checkbox"/>	<input type="checkbox"/>	<input type="checkbox"/>	<input type="checkbox"/>	<input type="checkbox"/>	<input type="checkbox"/>	<input type="checkbox"/>
METHODS OF TESTING	written	<input type="checkbox"/>	<input type="checkbox"/>	<input type="checkbox"/>	<input type="checkbox"/>	<input type="checkbox"/>	<input type="checkbox"/>	<input type="checkbox"/>	<input type="checkbox"/>	<input type="checkbox"/>	<input type="checkbox"/>	<input type="checkbox"/>	<input type="checkbox"/>	<input type="checkbox"/>	<input type="checkbox"/>	<input type="checkbox"/>	<input type="checkbox"/>	<input type="checkbox"/>	<input type="checkbox"/>	<input type="checkbox"/>	<input type="checkbox"/>	<input type="checkbox"/>	<input type="checkbox"/>	<input type="checkbox"/>	<input type="checkbox"/>	<input type="checkbox"/>	<input type="checkbox"/>	<input type="checkbox"/>
	oral	<input type="checkbox"/>	<input type="checkbox"/>	<input type="checkbox"/>	<input type="checkbox"/>	<input type="checkbox"/>	<input type="checkbox"/>	<input type="checkbox"/>	<input type="checkbox"/>	<input type="checkbox"/>	<input type="checkbox"/>	<input type="checkbox"/>	<input type="checkbox"/>	<input type="checkbox"/>	<input type="checkbox"/>	<input type="checkbox"/>	<input type="checkbox"/>	<input type="checkbox"/>	<input type="checkbox"/>	<input type="checkbox"/>	<input type="checkbox"/>	<input type="checkbox"/>	<input type="checkbox"/>	<input type="checkbox"/>	<input type="checkbox"/>	<input type="checkbox"/>	<input type="checkbox"/>	<input type="checkbox"/>
	performance	<input type="checkbox"/>	<input type="checkbox"/>	<input type="checkbox"/>	<input type="checkbox"/>	<input type="checkbox"/>	<input type="checkbox"/>	<input type="checkbox"/>	<input type="checkbox"/>	<input type="checkbox"/>	<input type="checkbox"/>	<input type="checkbox"/>	<input type="checkbox"/>	<input type="checkbox"/>	<input type="checkbox"/>	<input type="checkbox"/>	<input type="checkbox"/>	<input type="checkbox"/>	<input type="checkbox"/>	<input type="checkbox"/>	<input type="checkbox"/>	<input type="checkbox"/>	<input type="checkbox"/>	<input type="checkbox"/>	<input type="checkbox"/>	<input type="checkbox"/>	<input type="checkbox"/>	<input type="checkbox"/>
METHODS OF TEACHING	self-paced	<input type="checkbox"/>	<input type="checkbox"/>	<input type="checkbox"/>	<input type="checkbox"/>	<input type="checkbox"/>	<input type="checkbox"/>	<input type="checkbox"/>	<input type="checkbox"/>	<input type="checkbox"/>	<input type="checkbox"/>	<input type="checkbox"/>	<input type="checkbox"/>	<input type="checkbox"/>	<input type="checkbox"/>	<input type="checkbox"/>	<input type="checkbox"/>	<input type="checkbox"/>	<input type="checkbox"/>	<input type="checkbox"/>	<input type="checkbox"/>	<input type="checkbox"/>	<input type="checkbox"/>	<input type="checkbox"/>	<input type="checkbox"/>	<input type="checkbox"/>	<input type="checkbox"/>	<input type="checkbox"/>
	hands-on	<input type="checkbox"/>	<input type="checkbox"/>	<input type="checkbox"/>	<input type="checkbox"/>	<input type="checkbox"/>	<input type="checkbox"/>	<input type="checkbox"/>	<input type="checkbox"/>	<input type="checkbox"/>	<input type="checkbox"/>	<input type="checkbox"/>	<input type="checkbox"/>	<input type="checkbox"/>	<input type="checkbox"/>	<input type="checkbox"/>	<input type="checkbox"/>	<input type="checkbox"/>	<input type="checkbox"/>	<input type="checkbox"/>	<input type="checkbox"/>	<input type="checkbox"/>	<input type="checkbox"/>	<input type="checkbox"/>	<input type="checkbox"/>	<input type="checkbox"/>	<input type="checkbox"/>	<input type="checkbox"/>
	demonstration	<input type="checkbox"/>	<input type="checkbox"/>	<input type="checkbox"/>	<input type="checkbox"/>	<input type="checkbox"/>	<input type="checkbox"/>	<input type="checkbox"/>	<input type="checkbox"/>	<input type="checkbox"/>	<input type="checkbox"/>	<input type="checkbox"/>	<input type="checkbox"/>	<input type="checkbox"/>	<input type="checkbox"/>	<input type="checkbox"/>	<input type="checkbox"/>	<input type="checkbox"/>	<input type="checkbox"/>	<input type="checkbox"/>	<input type="checkbox"/>	<input type="checkbox"/>	<input type="checkbox"/>	<input type="checkbox"/>	<input type="checkbox"/>	<input type="checkbox"/>	<input type="checkbox"/>	<input type="checkbox"/>
	lecture	<input type="checkbox"/>	<input type="checkbox"/>	<input type="checkbox"/>	<input type="checkbox"/>	<input type="checkbox"/>	<input type="checkbox"/>	<input type="checkbox"/>	<input type="checkbox"/>	<input type="checkbox"/>	<input type="checkbox"/>	<input type="checkbox"/>	<input type="checkbox"/>	<input type="checkbox"/>	<input type="checkbox"/>	<input type="checkbox"/>	<input type="checkbox"/>	<input type="checkbox"/>	<input type="checkbox"/>	<input type="checkbox"/>	<input type="checkbox"/>	<input type="checkbox"/>	<input type="checkbox"/>	<input type="checkbox"/>	<input type="checkbox"/>	<input type="checkbox"/>	<input type="checkbox"/>	<input type="checkbox"/>
CRITICALITY	danger to person or	<input type="checkbox"/>	<input type="checkbox"/>	<input type="checkbox"/>	<input type="checkbox"/>	<input type="checkbox"/>	<input type="checkbox"/>	<input type="checkbox"/>	<input type="checkbox"/>	<input type="checkbox"/>	<input type="checkbox"/>	<input type="checkbox"/>	<input type="checkbox"/>	<input type="checkbox"/>	<input type="checkbox"/>	<input type="checkbox"/>	<input type="checkbox"/>	<input type="checkbox"/>	<input type="checkbox"/>	<input type="checkbox"/>	<input type="checkbox"/>	<input type="checkbox"/>	<input type="checkbox"/>	<input type="checkbox"/>	<input type="checkbox"/>	<input type="checkbox"/>	<input type="checkbox"/>	<input type="checkbox"/>
	equipment	<input type="checkbox"/>	<input type="checkbox"/>	<input type="checkbox"/>	<input type="checkbox"/>	<input type="checkbox"/>	<input type="checkbox"/>	<input type="checkbox"/>	<input type="checkbox"/>	<input type="checkbox"/>	<input type="checkbox"/>	<input type="checkbox"/>	<input type="checkbox"/>	<input type="checkbox"/>	<input type="checkbox"/>	<input type="checkbox"/>	<input type="checkbox"/>	<input type="checkbox"/>	<input type="checkbox"/>	<input type="checkbox"/>	<input type="checkbox"/>	<input type="checkbox"/>	<input type="checkbox"/>	<input type="checkbox"/>	<input type="checkbox"/>	<input type="checkbox"/>	<input type="checkbox"/>	<input type="checkbox"/>
	importance	<input type="checkbox"/>	<input type="checkbox"/>	<input type="checkbox"/>	<input type="checkbox"/>	<input type="checkbox"/>	<input type="checkbox"/>	<input type="checkbox"/>	<input type="checkbox"/>	<input type="checkbox"/>	<input type="checkbox"/>	<input type="checkbox"/>	<input type="checkbox"/>	<input type="checkbox"/>	<input type="checkbox"/>	<input type="checkbox"/>	<input type="checkbox"/>	<input type="checkbox"/>	<input type="checkbox"/>	<input type="checkbox"/>	<input type="checkbox"/>	<input type="checkbox"/>	<input type="checkbox"/>	<input type="checkbox"/>	<input type="checkbox"/>	<input type="checkbox"/>	<input type="checkbox"/>	<input type="checkbox"/>
AIT	difficulty?	<input type="checkbox"/>	<input type="checkbox"/>	<input type="checkbox"/>	<input type="checkbox"/>	<input type="checkbox"/>	<input type="checkbox"/>	<input type="checkbox"/>	<input type="checkbox"/>	<input type="checkbox"/>	<input type="checkbox"/>	<input type="checkbox"/>	<input type="checkbox"/>	<input type="checkbox"/>	<input type="checkbox"/>	<input type="checkbox"/>	<input type="checkbox"/>	<input type="checkbox"/>	<input type="checkbox"/>	<input type="checkbox"/>	<input type="checkbox"/>	<input type="checkbox"/>	<input type="checkbox"/>	<input type="checkbox"/>	<input type="checkbox"/>	<input type="checkbox"/>	<input type="checkbox"/>	<input type="checkbox"/>
	tested?	<input type="checkbox"/>	<input type="checkbox"/>	<input type="checkbox"/>	<input type="checkbox"/>	<input type="checkbox"/>	<input type="checkbox"/>	<input type="checkbox"/>	<input type="checkbox"/>	<input type="checkbox"/>	<input type="checkbox"/>	<input type="checkbox"/>	<input type="checkbox"/>	<input type="checkbox"/>	<input type="checkbox"/>	<input type="checkbox"/>	<input type="checkbox"/>	<input type="checkbox"/>	<input type="checkbox"/>	<input type="checkbox"/>	<input type="checkbox"/>	<input type="checkbox"/>	<input type="checkbox"/>	<input type="checkbox"/>	<input type="checkbox"/>	<input type="checkbox"/>	<input type="checkbox"/>	<input type="checkbox"/>
	taught?	<input type="checkbox"/>	<input type="checkbox"/>	<input type="checkbox"/>	<input type="checkbox"/>	<input type="checkbox"/>	<input type="checkbox"/>	<input type="checkbox"/>	<input type="checkbox"/>	<input type="checkbox"/>	<input type="checkbox"/>	<input type="checkbox"/>	<input type="checkbox"/>	<input type="checkbox"/>	<input type="checkbox"/>	<input type="checkbox"/>	<input type="checkbox"/>	<input type="checkbox"/>	<input type="checkbox"/>	<input type="checkbox"/>	<input type="checkbox"/>	<input type="checkbox"/>	<input type="checkbox"/>	<input type="checkbox"/>	<input type="checkbox"/>	<input type="checkbox"/>	<input type="checkbox"/>	<input type="checkbox"/>

TASK NUMBER			121-004-1127		121-004-1128		111-004-1127		111-004-1128
-------------	--	--	--------------	--	--------------	--	--------------	--	--------------

SUPPLY AND ADMINISTRATIVE DUTIES

RATING OF ELS	writing	reading	speaking	listening
	<input checked="" type="checkbox"/>	<input checked="" type="checkbox"/>	<input checked="" type="checkbox"/>	<input checked="" type="checkbox"/>
	<input checked="" type="checkbox"/>	<input checked="" type="checkbox"/>	<input checked="" type="checkbox"/>	<input checked="" type="checkbox"/>
	<input checked="" type="checkbox"/>	<input checked="" type="checkbox"/>	<input checked="" type="checkbox"/>	<input checked="" type="checkbox"/>
METHODS OF TESTING	written	oral	performance	
	<input checked="" type="checkbox"/>	<input checked="" type="checkbox"/>	<input checked="" type="checkbox"/>	
	<input checked="" type="checkbox"/>	<input checked="" type="checkbox"/>	<input checked="" type="checkbox"/>	
METHODS OF TEACHING	self-paced	hands-on	demonstration	lecture
	<input checked="" type="checkbox"/>	<input checked="" type="checkbox"/>	<input checked="" type="checkbox"/>	<input checked="" type="checkbox"/>
	<input checked="" type="checkbox"/>	<input checked="" type="checkbox"/>	<input checked="" type="checkbox"/>	<input checked="" type="checkbox"/>
	<input checked="" type="checkbox"/>	<input checked="" type="checkbox"/>	<input checked="" type="checkbox"/>	<input checked="" type="checkbox"/>
CRITICALITY	danger to person or equipment	importance		
	<input checked="" type="checkbox"/>	<input checked="" type="checkbox"/>		
	<input checked="" type="checkbox"/>	<input checked="" type="checkbox"/>		
UNIT	difficult?	tested?		
	<input checked="" type="checkbox"/>	<input checked="" type="checkbox"/>		

RATING OF ELS	writing	reading	speaking	listening
	<input checked="" type="checkbox"/>	<input checked="" type="checkbox"/>	<input checked="" type="checkbox"/>	<input checked="" type="checkbox"/>
	<input checked="" type="checkbox"/>	<input checked="" type="checkbox"/>	<input checked="" type="checkbox"/>	<input checked="" type="checkbox"/>
	<input checked="" type="checkbox"/>	<input checked="" type="checkbox"/>	<input checked="" type="checkbox"/>	<input checked="" type="checkbox"/>
METHODS OF TESTING	written	oral	performance	
	<input checked="" type="checkbox"/>	<input checked="" type="checkbox"/>	<input checked="" type="checkbox"/>	
	<input checked="" type="checkbox"/>	<input checked="" type="checkbox"/>	<input checked="" type="checkbox"/>	
METHODS OF TEACHING	self-paced	hands-on	demonstration	lecture
	<input checked="" type="checkbox"/>	<input checked="" type="checkbox"/>	<input checked="" type="checkbox"/>	<input checked="" type="checkbox"/>
	<input checked="" type="checkbox"/>	<input checked="" type="checkbox"/>	<input checked="" type="checkbox"/>	<input checked="" type="checkbox"/>
	<input checked="" type="checkbox"/>	<input checked="" type="checkbox"/>	<input checked="" type="checkbox"/>	<input checked="" type="checkbox"/>
CRITICALITY	danger to person or equipment	importance		
	<input checked="" type="checkbox"/>	<input checked="" type="checkbox"/>		
	<input checked="" type="checkbox"/>	<input checked="" type="checkbox"/>		
AIT	difficulty?	tested?	taught?	
	<input checked="" type="checkbox"/>	<input checked="" type="checkbox"/>	<input checked="" type="checkbox"/>	
	<input checked="" type="checkbox"/>	<input checked="" type="checkbox"/>	<input checked="" type="checkbox"/>	

TASK NUMBER
101-511-2102
101-511-2152
101-511-2101
101-511-2101

SUPPLY AND ADMINISTRATIVE SERVICES

RATING OF ELS	writing	[Grid]																			
	reading	[Grid]																			
	speaking	[Grid]																			
	listening	[Grid]																			
METHODS OF TESTING	written	[Grid]																			
	oral	[Grid]																			
	performance	[Grid]																			
METHODS OF TEACHING	self-paced	[Grid]																			
	hands-on	[Grid]																			
	demonstration	[Grid]																			
	lecture	[Grid]																			
CRITICALITY	danger to person or	[Grid]																			
	equipment	[Grid]																			
	importance	[Grid]																			
UNIT	difficult?	[Grid]																			
	tested?	[Grid]																			

RATING OF ELS	writing	[Grid]																			
	reading	[Grid]																			
	speaking	[Grid]																			
	listening	[Grid]																			
METHODS OF TESTING	written	[Grid]																			
	oral	[Grid]																			
	performance	[Grid]																			
METHODS OF TEACHING	self-paced	[Grid]																			
	hands-on	[Grid]																			
	demonstration	[Grid]																			
	lecture	[Grid]																			
CRITICALITY	danger to person or	[Grid]																			
	equipment	[Grid]																			
	importance	[Grid]																			
AIT	difficulty?	[Grid]																			
	tested?	[Grid]																			
	taught?	[Grid]																			

TASK NUMBER	101-531-1202	101-531-1203	101-531-1204	101-531-1205
	[Grid]	[Grid]	[Grid]	[Grid]

Items and Annotations

RATING OF ELS	writing	reading	speaking	listening
	✓	✓	✓	✓
METHODS OF TESTING	written	✓	✓	✓
	oral	✓	✓	✓
	performance	✓	✓	✓
METHODS OF TEACHING	self-paced	✓	✓	✓
	hands-on	✓	✓	✓
	demonstration	✓	✓	✓
	lecture	✓	✓	✓
CRITICALITY	danger to person or equipment	✓	✓	✓
	importance	✓	✓	✓
	difficult?	✓	✓	✓
UNIT	tested?	✓	✓	✓
	taught?	✓	✓	✓

RATING OF ELS	writing	reading	speaking	listening
	✓	✓	✓	✓
METHODS OF TESTING	written	✓	✓	✓
	oral	✓	✓	✓
	performance	✓	✓	✓
METHODS OF TEACHING	self-paced	✓	✓	✓
	hands-on	✓	✓	✓
	demonstration	✓	✓	✓
	lecture	✓	✓	✓
CRITICALITY	danger to person or equipment	✓	✓	✓
	importance	✓	✓	✓
	difficulty?	✓	✓	✓
AIT	tested?	✓	✓	✓
	taught?	✓	✓	✓

TASK NUMBER
 101-531-1210
 101-531-2101
 101-531-2102
 101-531-2101

ARMS AND AMMUNITION

PAGE
OF

NOS _____

NUMBER OF RESPONDENTS _____

DATA OBTAINED FROM _____

TRAINING SPECIALIST _____

TASK NUMBER	AIT		CRITICALITY	METHODS OF TEACHING	METHODS OF TESTING	RATING OF ELS	UNIT		MOS _____	NUMBER OF RESPONDENTS _____		DATA OBTAINED FROM _____	TRAINING SPECIALIST _____
	taught?	tested?					difficult?	importance		equipment	danger to person or		
101-531-2153	writing												
	reading												
	speaking												
	listening												
101-531-2151	written												
	oral												
	performance												
101-531-2162	self-paced												
	hands-on												
	demonstration												
	lecture												
101-531-2151	danger to person or												
	equipment												
	importance												
101-531-2151	difficult?												
	tested?												
	taught?												

PROPERTY ROOM NUMBER 101-531-2153
 RMS AND AMMUNITION 101-531-2162
 101-531-2151

RATING OF ELS	writing	reading	speaking	listening
	written	oral	performance	
	self-paced	hands-on	demonstration	lecture
	danger to person or	equipment	importance	
UNIT	difficult?	tested?		

MOS _____ NUMBER OF RESPONDENTS _____

DATA OBTAINED FROM _____ TRAINING SPECIALIST

RATING OF ELS	writing	reading	speaking	listening
	written	oral	performance	
	self-paced	hands-on	demonstration	lecture
	danger to person or	equipment	importance	
AIT	difficulty?	tested?	taught?	

TASK NUMBER

101-531-2154

551P-125101

951P-165101

101-531-2154

Pls refer to main file

APPENDIX 3

PERCENTAGE LANGUAGE SKILLS

This appendix contains the computations for the percentages of listening, speaking, reading and writing involved in each cluster.

Some clusters have two sets of computations because some Task Prioritization Forms were received after original computations and had to be added on.

PERCENTAGE LANGUAGE SKILLS
MOS 764

TR = total number of responses to variables in the cluster
 T = number of tasks in 't' cluster
 V = variables
 R = maximum number of respondents in any task in that cluster

FORMULA	LISTENING	SPEAKING	READING	WRITING
$\frac{TR + (T)(V)(R)}{TR} = \%$	-demonstration -lecture -hands-on -performance (test) -rating (scale)	-oral (test) -rating (scale)	-self-paced -written (test) -rating (scale)	-lecture -self-paced -written (test) -rating (scale)
Cluster	5 = 100%	2 = 100%	3 = 100%	4 = 100%
1100 1200 1300 1400 1500 1600 1700 1800 1900 2000 2100 2200 2300 2400 2500 2600 2700 2800 2900 3000 3100 3200 3300 3400 3500 3600 3700 3800 3900 4000 4100 4200 4300 4400 4500 4600 4700 4800 4900 5000 5100 5200 5300 5400 5500 5600 5700 5800 5900 6000 6100 6200 6300 6400 6500 6600 6700 6800 6900 7000 7100 7200 7300 7400 7500 7600 7700 7800 7900 8000 8100 8200 8300 8400 8500 8600 8700 8800 8900 9000 9100 9200 9300 9400 9500 9600 9700 9800 9900 10000	1200 1300 1400 1500 1600 1700 1800 1900 2000 2100 2200 2300 2400 2500 2600 2700 2800 2900 3000 3100 3200 3300 3400 3500 3600 3700 3800 3900 4000 4100 4200 4300 4400 4500 4600 4700 4800 4900 5000 5100 5200 5300 5400 5500 5600 5700 5800 5900 6000 6100 6200 6300 6400 6500 6600 6700 6800 6900 7000 7100 7200 7300 7400 7500 7600 7700 7800 7900 8000 8100 8200 8300 8400 8500 8600 8700 8800 8900 9000 9100 9200 9300 9400 9500 9600 9700 9800 9900 10000	1200 1300 1400 1500 1600 1700 1800 1900 2000 2100 2200 2300 2400 2500 2600 2700 2800 2900 3000 3100 3200 3300 3400 3500 3600 3700 3800 3900 4000 4100 4200 4300 4400 4500 4600 4700 4800 4900 5000 5100 5200 5300 5400 5500 5600 5700 5800 5900 6000 6100 6200 6300 6400 6500 6600 6700 6800 6900 7000 7100 7200 7300 7400 7500 7600 7700 7800 7900 8000 8100 8200 8300 8400 8500 8600 8700 8800 8900 9000 9100 9200 9300 9400 9500 9600 9700 9800 9900 10000	1200 1300 1400 1500 1600 1700 1800 1900 2000 2100 2200 2300 2400 2500 2600 2700 2800 2900 3000 3100 3200 3300 3400 3500 3600 3700 3800 3900 4000 4100 4200 4300 4400 4500 4600 4700 4800 4900 5000 5100 5200 5300 5400 5500 5600 5700 5800 5900 6000 6100 6200 6300 6400 6500 6600 6700 6800 6900 7000 7100 7200 7300 7400 7500 7600 7700 7800 7900 8000 8100 8200 8300 8400 8500 8600 8700 8800 8900 9000 9100 9200 9300 9400 9500 9600 9700 9800 9900 10000	
	40%	24%	22%	21%
1100	1200 84 63 62 82 92 376 44% 900 400	1200 35 71 109 360 24%	1200 15 23 63 104 540 22%	1200 6 23 47 147 21%
	44%	32%	17%	50%
1100	2100 11 7 11 15 55 42% 1300 130	2100 1 5 7 13 51 12%	2100 6 2 6 14 98 17%	2100 7 6 2 6 21 50%
	42%	14%	3%	25%
		61		

PERCENTAGE LANGUAGE SKILLS
 NOS 764

TR = total number of responses to variables in the cluster
 T = number of tasks in the cluster
 V = variables
 R = maximum number of respondents in any task in that cluster

FOI	LISTENING	SPEAKING	READING
TR + (T)(V)(R) = %	-demonstration -lecture -hands-on -performance (test) -rating (scale)	-oral (test) -rating (scale)	-self-paced -written (test) -rating (scale)
Cluster	5 = 100%	2 = 100%	3 = 100%
6420-1111 1111-1111 1111	4.80 6 6 3 6 8 <u>29</u> 80 $\sqrt{29.000}$.363	32 4 5 7 32 $\sqrt{7.000}$.257	20 2 3 6 <u>12</u> 4
051821-1000 07132-0827	36%	28%	20%
111611-1111	24 \times 15 = 360 22 14 21 22 23 <u>102</u> 150 $\sqrt{103.000}$.687	2 \times 2 \times 15 = 60 6 16 <u>22</u> 60 $\sqrt{267}$	2 \times 3 = 6 9 5 17 <u>3</u>
111611-1111 07132-0827	67%	27%	20%
111611-1111	37 \times 10 = 370 25 11 20 19 <u>27</u> 150 $\sqrt{103.000}$.680	3 \times 2 = 6 2 14 <u>16</u> 60 $\sqrt{267}$	2 \times 3 = 6 6 3 2 <u>27</u>
554-1000	68%	27%	20%
		62	

PERCENTAGE LANGUAGE SKILLS
NOS 764

TR = total number of responses to variables in the cluster
T = number of tasks in the cluster
V = variables

R = maximum number of respondents in any task in that cluster

FOUR	LISTENING	SPEAKING	READING	WRITING
TR + (T)(V)(R) = 32	-demonstration -lecture -hands-on -performance (test) -rating (scale)	-oral (test) -rating (scale)	-self-paced -written (test) -rating (scale)	-lecture -self-paced -written (test) -rating (scale)
Cluster	5 = 100%	2 = 100%	3 = 100%	4 = 100%
English 101 English 102 English 103	24 x 5 x 17 = 2040 112 102 137 169 320 <u>746</u> 20% (746/3730)	24 x 2 x 17 = 816 46 202 <u>250</u> 81% (250/306)	24 x 3 x 17 = 1224 152 146 225 <u>523</u> 177% (523/295)	24 x 4 x 17 = 1632 132 115 148 262 <u>660</u> 157% (660/420)
	37%	31%	48%	45%
AFHS 101 AFHS 102 AFHS 103	14 x 5 x 12 = 840 72 61 97 92 122 <u>324</u> 38% (324/840)	14 x 2 x 12 = 336 34 82 <u>116</u> 33% (116/336)	14 x 3 x 12 = 504 51 41 115 <u>207</u> 41% (207/504)	14 x 4 x 12 = 672 61 51 41 72 <u>226</u> 33% (226/672)
	47%	33%	41%	37%
AFHS 104 AFHS 105 AFHS 106 AFHS 107 AFHS 108 AFHS 109 AFHS 110	8 x 5 x 14 = 560 25 31 37 41 52 <u>186</u> 33% (186/560)	8 x 2 x 14 = 224 7 37 21 <u>65</u> 29% (65/224)	8 x 3 x 14 = 336 33 39 40 <u>112</u> 33% (112/336)	8 x 4 x 14 = 448 33 39 40 <u>112</u> 25% (112/448)
	37%	29%	41%	41%
		63		

APPENDIX 4

OBSERVATION FORMS

The attached forms were taken to the actual training where observers recorded actual training situations and language used in the training. These forms were used to indicate the CONDITIONS for the Job Language Performance Requirements in this MOS.

SUBJECT _____

* TASK NUMBER IF KNOWN _____

Physical Environment of Instruction

- A. Classroom
- B. Open Areas (live firefield- mark-up terrain)
- C. Large enclosed area (bleacher sites)
(Warehouse size)
- D. Other

Comments: -

Styles of Communication Instructor, Verbal orders

- A. Formal Speech
- B. Informal Speech
- C. Regional/Ethnic
- D. Body Language
- E. Profanity
- F. Shop talk/slang
- G. Non-standard English
- I. Other

Comments:

Media of Instruction

- A. Films
- B. Video cassettes
- C. Graphic Training Aids (diagrams, etc....)
- D. Illustrations (requiring reading/not requiring reading)
- E. Maps
- F. Mock-ups
- G. Models/Amulate
- H. Real equipment
- I. Transparencies
- J. Tape cassettes
- K. Training Publications (required/available)
- L. Signs/Notices
- M. P.A. System
- N. Normal Voice
- O. Soldier's Manual
- P. chalkboard
- Q. Other

Comments:

Mode of Response

- A. Manipulating a piece of equipment/device
- B. Answers (spoken - written)
- C. Signals
- D. Performance
- E. Taking Notes
- F. Teamwork
- G. Other

Comments:

Instructional Ratio

- A. Instructor; one-to-one/class
- B. Peer/one-to-one
- C. Group or Committee Group (group of instructors of whom one teaches one portion of the whole)
 - Small (12 or less)
 - Large (more than 12)
- D. Other
- E. Questions

Comments:

APPENDIX 5

STRUCTURAL/LEXICAL LIST

Attached is the list of
structural and lexical items
for this MOS.
(For discussion, see Section II)

STRUCTURAL ITEMS

SENTENCE PATTERNS

SIMPLE: One subject and one predicate

1. Subject and action verb
Firer aims.
2. Subject and action verb and direct/indirect object
Many things cause burns.
3. Subject and linking verb and subjective complement
This is very important.

COMPOUND: Two or more sentences joined by:

1. Coordinating conjunction

Explain the task and ask the trainees if they understand the task, and the conditions they are expected to perform at the end of the session, the conditions under which they must operate, and the standard they must achieve.

2. Conjunctive adverb

Do not start or stop the vehicle while the radio is on or you may damage the set.

3. Semicolon

A light pressure is exerted on the driving spring when the bolt is forward; however, never attempt to cock the gun while the backplate is off and the driving spring assembly is in place.

COMPLEX: One or more dependent clauses

1. Adjectival (functions as an adjective by modifying nouns and pronouns)

At the bottom of the map you will find three different bar scales which will help you to change map distance to miles, meters, or yards.

2. Adverbial (functions as an adverb by modifying verbs, adjectives, and other adverbs) The mouth-to-nose method is performed in the same way except you blow into his nose while you pinch his lips closed with one hand.

3. Noun (functions as a noun) The person who is performing artificial respiration quickly blows into the casualty's lungs after each five compressions.

5. MANNER

Take deep breath and place mouth around soldier's mouth; then blow forcefully as you observe his chest.

6. TIME

When you have to go a certain distance on foot without any landmarks to guide you, you can measure distance pretty accurately by counting your paces.

Split the bracket until fire for effect is possible.

7. PLACE

Loosen clothing at neck, waist, and other places where it tends to bind.

8. CAUSE

Be careful not to depress the trigger, since this will cause the firing pin to be released.

9. ADVERSATIVE

The casualty has no fractures, but has a bleeding wound.

10. CONDITION

If it isn't, your rifle can still fire, but it could possibly explode, causing you harm.

PHRASES

1. GERUND

(upon) Hearing the correct password, give permission to pass if you have no other reasons to doubt.

2. PARTICIPIAL

Using a straightedge draw a line between the two objects.

3. INFINITIVE

To camouflage exposed skin paint the shiny areas with a dark color.

4. PREPOSITIONAL

Under certain light conditions, front sight ports can be seen, but you can't determine whether you are looking through, above, or to the side of the rear sight aperture.

VERBS

1. VERB TENSES

Make sure you clearly understand the task you are to teach.

--You will be tested.

--If they elect to take it, they must complete the test once they have begun the first event or else they will receive a NO GO for the entire test.

--If the soldier is breathing, mouth-to-mouth resuscitation is not necessary.

--When all 10 pebbles have been moved to the left pocket, you have traveled one kilometer.

--Have someone walk the FDL and determine dead space.

--Sensing is an instantaneous determination by the grenadier as to where the grenade exploded.

present progressive verb
present verb (uninflected, third
person, indicative)
past tense (regular/irregular)
present perfect
future

2. TYPES

intransitive
(You) train for results.

transitive
Mask the casualty.

linking
The skin becomes inflamed.

3. VOICE

active

recognize
protect
is facing
remove
explode
sounds
points out
seen

appear
seek
secure
wear
mask
stored
do require
could affect

has
must be
wipe
rinse
put brush
empty
reassemble
reinstall

GERUNDS

Sensing is an instantaneous determination by the grenadier as to where the grenade explodes with respect to the target.

INFINITIVES

To fire, hold the M16A1 in the rest with your right shoulder firmly against the weapon's butt plate.

ADVERBS +

1. SUPERLATIVE

When such a line of fire exists, the primary sector will be assigned, based on it, with the FDL being the sector limit closest to the friendly troops.

2. INDEFINITE

The launcher has a heavy coat of oil on working parts, and a light coat of oil elsewhere.

3. FREQUENCY

Apply a little graphite grease to the threads of the antenna section for easy removal and to prevent the sections from seizing if they have been rarely removed.

4. OTHER

Assembly procedure for the grenade launcher merely reverses disassembly steps.

5. COMPARATIVE

The care, cleaning, lubrication and adjustment of the mount used with the gun are no less important.

VERBS AND PREPOSITIONS

Line up the key in the receptacle with the slot in the cable connector.

VERBS AND ADVERB

(particles)

Put on the protective mask within nine seconds of the chemical alarm and remain in the contaminated area for at least two minutes without making further adjustments to the mask.

APPENDIX 6

VOCABULARY (DLIELC IN-HOUSE)

The following vocabulary list was extracted from the Soldier's Manual task by task and then categorized into GENERAL, BASIC AND TECHNICAL vocabulary.

NOT APPLICABLE

REF: On 15 MAY 1981 agreement between
TRADOC and DLIELC was reached
that DLIELC In-House Vocabulary
would not be produced for this
MOS.

A6-3

75

APPENDIX 7

Appendix 7 is the machine-generated vocabulary list. It was not useful for our purposes. It is included as a vocabulary reference.

A7-1

76



76 ✓
Skill 1

SEQUENTIAL DATA MANAGER

PAGE NO 2 TYPE RECORD BYTES

NO	TYPE	RECORD BYTES
1	AC	
3	ADJUSTED/OTHER	
1	ALLIANCES	
2	ALTERED	
1	AMM	
1	ANTI-QTY-RECEIPT	
1	CHAPERLING	
1	CHECKING	
2	CELLS	
1	COMPONENTS	
3	DELIVER	
1	DEGRAC	
1	DLE-TNS	
1	DURABLE	
2	EJECTING	
2	EXCH-AGFD	
1	EXTORTING	
2	FAO	
1	FEEDING	
1	FSC	
5	GENFRIC	
1	GRATUITOUS	
1	LC-76V1/2	
1	LOADING	
5	MANUAL-GUIDED	
5	MANUAL-PISTOL	
3	MCI	
2	MISFIRE	
2	MORTARY	
5	MULTITON	
1	MG7	
1	MTH	
1	OTIFICATION	
5	PERFORMANCE	
1	PREVENTIVE	
5	PROCEDURES	
2	PLICATIONS INDEX	
2	RECAPITULATION	
1	RECIL	
1	RECONCILIATION	
3	RIFLE CORE	
1	SENSITIVE	
1	SMALL ARMS	
2	SUPPLEMENTAL	
1	SUPPLY MANUAL	
2	UID	
1	UNLOCKING	

MASTER READ 5987
 LFECL 32
 BLKSIZE 3136
 TRANS READ 454
 LRECL 60
 BLKSIZE 3136
 UPDATED RECORDS 1591
 LRECL 34
 BLKSIZE 3136

SYNCSRT III-AND-A-HALF COPYRIGHT WHITLOW COMPUTER SYSTEMS, INC. 1974 REL 1.0 DATE=80/176 TIME=11.07.47
SRT #TELDS=(1,25,CHDA)
LSP0451 END SRT PH
LPR1071 DATA BIAS = 00
LPR1041 TRK CVER-ALLC FACTOR= PRIM/USER07.2
LPR0041 PCC IN 1995, CU1
LPR1091 TPFIS APPLIED 1234
VER0521 END SYNCSRT UPTO N, THER0207, STEPS

...C9...10...19...20...25...30...35...40...45... 1...55...60...65...70...75...80... .. 90...95...100...110...

MFADERS1 PHOS XERO LIST BY PAGE! TU 50

HEADER2 1 1 TC 1

IF 2 GT WFF= GORACK

IF EDJ=2 ENDRLN

IF SY11: . 1 MOVE 1 TO H1,28 MOVE SPACES TO 1,132

MOVE 1 TO 1,1

MOVE 2 TO 4,28

GORACK

IF 1 R= H1,29 M2 MOVE SPACES TL 1,132 MOVE 1 TO 1,1

MOVE 2 TO 4,30

MOVE 1 TO H1,29

GORACK

IF R34 = 1 1 MOVE 26 TO 34,7 GORACK

IF R47 = 1 1 MOVE 26 TO 42,7 GORACK

IF R50 = 1 1 MOVE 26 TO 50,7 GORACK

IF R58 = 1 1 MOVE 26 TO 58,7 GORACK

IF R66 = 1 1 MOVE 26 TO 66,7 GORACK

IF R74 = 1 1 MOVE 26 TO 74,7 GORACK

IF R82 = 1 1 MOVE 26 TO 82,7 GORACK

IF R90 = 1 1 MOVE 26 TO 90,7 GORACK

IF R98 = 1 1 MOVE 26 TO 98,7 GORACK

IF R106 = 1 1 MOVE 26 TO 106,7 GORACK

IF R114 = 1 1 MOVE 26 TO 114,7 GORACK

IF R122 = 1 1 MOVE 26 TO 122,7 GORACK

M9 MOVE SPACES TU 1,132 MOVE 26 TU 26,7

ORACODE 382 ECJCODE 0 CONSTANTS 41 FULLWORDS 0 RETURN 64

A

JOBNAME=TPERC2D7 STEPS=6R0K1 STEP=PRINT

DDNAME=SYSPRINT UNIT=643
 DDNAME=SYSEAR UNIT=645
 DDNAME=SYSLCUMP UNIT=646
 DDNAME=CYLINDEX UNIT=344
 DDNAME=SYSUT1 UNIT=647
 DDNAME=SYSUT2 UNIT=648
 DDNAME=SYSSTA UNIT=608

DSN=THE.READY1.MDS76Y
 DSN=SYSPRINT76.T075959.RV000.TPERC2D7.RC000647

SEP=04551
 SEP=

SYSL1 INPUT	1995	SYSL2 OUTPUT	476	SYSL3 OUTPUT	0	SYSL4 INPUT	0
LRECL	32	LRECL	133	LRECL	0	LRECL	0
BLKSIZE	3126	BLKSIZE	133	BLKSIZE	0	BLKSIZE	0

QTY	DESCRIPTION	UNIT	DATE	PAGE	QTY	DESCRIPTION	UNIT	DATE	PAGE
1	STORAGE	1503	1401	1109	1604				
1	STCRF	1102							
1	STCRF	1501							
1	STCRF	201	1102						
1	STCRF	10001	1701						
1	SUBMACHINEGUN	1405	1301	5010	5010				
1	SUPPLIES	1001	1001	504	201				
1	SUPPLY	1001	2001	704	504				
			2001	2301	1601				
			3001	3001	1501				
			1204	801	701				
1	SUSPENSE	1401							
1	TEMPERARY	1002							
1	TRANSFER	503	201						
1	TRANSFERRED	1001							
1	TRANSFERRING	1101	501						
1	TROUFLSHOOTING	1701							
1	TURN-IN	101	1301	201					
1	UNIT	1205	1001	1001	506				
		4001	1001	1001	507				
		1505	4204	4204	3101				
			1404	1304					
			201	1401	1302				
1	UNITS	301	201	1701	1701				
1	UNSECURICABLE	402							
1	WEAPON	1001	4003	4003	3706				
1	WEAPONS	1402	1101	3701	17010				
2	ACCESSORIES	2001	4201	4401	1005				
2	ACCOUNTABLE	101							
2	ACTION	4006	2701	1701	901				
2	ACTIONS	2001							
2	ACTIVE	103	201						
2	ACTIVITIES	1201							
2	ACTIVITY	701	601	4401	1401				
2	ADDITION	101	1401	1301	601				
2	ADDITIONAL	1101	701	101	3301				
2	ADP	3001	2001						
2	APPENDIX	1701							
2	AUTOCX	1001							
2	RIFE	3701							
2	CLASSES	401							
2	CLASSIFICATION	401							
2	CLIP	3502	3702						
2	COPE	301							
2	COMMANDER	102							
2	CX	403							
2	EXCHANGE	406							
2	FEED	301							
2	FEADING	501	301						
2	PERC	1406							
2	PUBLICATION	1001	101	1401					
2	PUBLICATION	1001	701	102	1401				
2	PICNIC	4001							
2	SOP	1701	1501	401					
2	TH	2001	1901	1701	69201	10004	6101	3501	1001

Category	Code	Count	Code	Count	Code	Count	Code	Count
5 BULLETINS	1302							
5 CAL	1703							
5 CALIBER	10001							
5 CAPULIFLAGE	20013	4601	4403					
5 CAPTIVE	3401	1101	1001	1001				
5 CHAPTER	2101							
5 CLEARER	3701							
5 CLFAXING	1002							
5 COBRAT	4001	801	701	502	4401	4202	4001	2001
	4001	3101	3001	2601	2501	2401	2201	1501
	1001	1001						
5 COMPANY	10001							
5 COMPANY	2201	2501	2401	2301	4401	3901	3001	3501
	3401	3001						
5 COMPLETE	1001	304	202	4201	4101	3701	3101	2501
	2002	1701	1601	1501	1401	1201	1101	1001
	701							
5 COMPLETED	1301	3101	1401					
5 COMPLETELY	1001							
5 COMPLETENESS	1001							
5 CONDITION	303							
	2201	3001	3201	3101	3001	2502	2204	2701
5 CONDITIONS	1302	1901	1701	602	4001	4001	3501	2501
	4006	1102	1001	502	4001	3901	3001	2001
	2007	4205	3901	3101	3001	2501	2401	2001
	1502	2505	2401	2301	2301	1706	1402	
5 CONTROL	701	1001	1001					
5 COPIES	1402	1201	701					
5 COPY	10001	3501						
5 COPRECTING	1701							
5 COPRECTIVE	1401	901	301	1601	1502			
5 COPRESPONSE	2401	901	4601	3201	2501			
5 COVER	1601							
5 CUSTODY	2010	1001	1705	1501	13013	1006	902	5002
5 DAILY	1501							
5 DEDUCTION	1001							
5 DEFECATICA	1001							
5 DELIVERY	701							
5 DESCRIPTIONS	4201							
5 DESIGNATED	1101							
5 DESTROY	1401	1201	801	201				
5 DESTROYED	202							
5 DETERIORATION	3501							
5 DIVISION	501							
5 CIVILIANS	1401							
5 CREW	1402							
5 EACH	601							
5 EMPLOYMENT	1501							
5 ENTER	801							
5 ESSENTIAL	1201							
5 ESSENTIALS	1201							

12

Word	3101	4001	1501	4201	4001	3701	3001	2701	2501	2001	1701	1401	1201	1001	0901
5 EXPE:OFO	3101	4001													
5 EXPL-SIVES	1701	1601													
5 EYE	2401	2505													
5 EYBALL	2501														
5 E1	501														
5 E5	101														
5 E7	301														
5 E9	301														
5 FACILITIES	101														
5 FACILITY	101														
5 FAILURE	2401														
5 FIELD	701														
5 FIGURE	202														
5 FOLDER	1301														
5 FORWARD	4001														
5 FUNCTIONING	3701														
5 FUNCTIONS	1101														
5 GROUP	2802														
5 GRUPS	3801														
5 HADLOCK	2501														
5 HAZARDS	2801														
5 HEADGEAR	3202														
5 HEADQUARTERS	101														
5 HELMET	4002														
5 HENRI-SCHELDON	3201														
5 IDENTIFIABLE	2601														
5 IDENTIFIED	2601														
5 IDENTIFIERS	401														
5 IDENTIFY	701														
5 IDENTIFYING	601														
5 IMPERIAL	701														
5 INDEX	1301														
5 INDIVIDUAL	102														
5 INK	4601														
5 INPUT	1401														
5 ITEM	402														
5 ITEMS	802														
5 JOINT	2601														
5 KIT	2404														
5 LESS	4201														
5 LESSON	401														
5 LESSONS	2301														
5 LEVELS	301														
5 LIBRARIES	901														
5 LIFE	101														
5 LIST	1001														
5 LISTED	1501														

5

MDS WORD LIST BY PAGE

5	LISTS	1301	602	201					
5	LOAD	4002	3001	2101	1102				
5	LOAD-BEARING	2401							
5	LOADING	10002							
5	LOCATED	3001	1501						
5	LOCATION	201	101	3001	2003	1701	1501	301	
5	LOCKS	1001							
5	LOCT	202							
5	LCT	501							
5	LOADS	501	2301						
5	LUB	3701							
5	LUBRICANT	3701							
5	LUBRICATING	4001							
5	LUBRICATION	1301							
5	LUBRICATED	4501	303	4302	4201	3702	3503	1604	1401 1303 1207
5	MAINTAIN	6002	4242	10004	17011	1202	1102	501	207
5	MAINTENANCE	201	101	1301	1201	1002	901	801	701 601 501 301
5	MATERIALS	1303	902	107					
5	MILLEN	3501							
5	MISSILE	4501	4302	4201					
5	MOISTURE	101							
5	MOTIFICATION	4202							
5	MOTIFIED	4002							
5	MOS	401							
5	MOSIS	1001		204	107	2001	1401	1302	1203 601 507
5	MOSIS	1001							
5	MOSIS	802							
5	MOSIS	802							
5	MOSIS	301	2101	2001	1601	1503	1401	1201	1101 901 601
5	MOSIS	901							
5	MOSIS	601							
5	MOSIS	4001							
5	MOSIS	1001							
5	MOSIS	201		101	3101	2701	2501	2401	2301 1407 704
5	MOSIS	4001							
5	MOSIS	4001							
5	MOSIS	1301	202	104	1401	1201	1202	1101	1001 901 601 701 1503 1701
5	MOSIS	302		402	302	203	0201	4201	1004 17011 1503
5	MOSIS	401		3002	2701	2502	2402	3001	3501 3401 3301 3102
5	MOSIS	105	1101	1001	902	507	702	603	501 403 303 200 100 501
5	MOSIS	302	503	4001	3001	3701	3501	3402	3202 2002 1502 1404
5	MOSIS	1204		2003	2101	2001	1901	1703	1602 1502 1404
5	MOSIS	1001	1601	1001	2701	2502	2402	3001	3501 3401 3301 3102
5	MOSIS	1001	501						
5	MOSIS	701							
5	MOSIS	701							
5	MOSIS	4201							
5	MOSIS	1204		1004	902	507	702	603	501 403 303 200 100 501
5	MOSIS	4001	1101	4001	3001	3701	3501	3402	3202 2002 1502 1404
5	MOSIS	2404		2003	2101	2001	1901	1703	1602 1502 1404
5	MOSIS	2801		101	1707				
5	MOSIS	4001	2001	2801	1707				
5	MOSIS	1201	208						

MOS WORD LIST BY PAGE

FAVE ACIDE IICN PAGE

WORD	3101	3001	2601	2501	2401	2301	1601	1401	1001
PERSONNEL	501	3101	3001	2601	2501	2401	2301	1601	1001
PICKUP	1401								
PICNIC	2201								
PLANNED	1404								
PLANNING	304	103	202	701	603	502	3000	2601	1001
PRIVATELY	1502								
PROBABLY	1701								
PROCESSES	001	701	601	401	301	201	101	3001	1001
PROPER	1601								
QUANTITIES	502	301	1401					1502	1001
QUARTER	701								
QUARTERMASTER	601								
RACE	101	701	501	302	1501	1401	1000		
RANK	3501	3701							
RATINGS	1001								
RECLASSIFIED	801								
RECORDED	1101								
RECORDED	601								
RECORDED	401	3904	1701	205					
RECORDED	1001								
REFERENCE	1502	1901	301						
REFERENCE	1502	1402	1102	2201	1701	1602	4200	3001	2602
REFERENCES	302	201	102	1702	1002	901	400	602	4002
	3801	3702	3601	3402	3302	3102	3000	2501	2402
	2201	1902	1402						
REQUIREMENTS	101								
RESPONSIBILITY	1401	101							
RESPONSIBLE	1701	401	101						
RETAIN	201								
RETAINING	101								
REVIEW	701								
RETURN	2801								
RETURNS	2601								
SAITATION	1101								
SA	1202								
SAFETY	4001								
SAFELY	3001	2601							
SAFELY	802	501	201	1601	1301				
SERGEANTS	242								
SET	2801	101	4401						
SET	702								
SHETS	1402	101							
SHIPPING	201								
SICK	2801								
SIGN	901								
SIGNS	3501								
SIGNAL	2601								
SOLDIERS	603	100	1201	901					
SP4	1401								
STATISTICS	401								
STEEL	1501								



Skill 1
764

WORDS FREQUENCY DISTRIBUTION 1,565 UNIQUE ITEMS 10,748 RECORDS

219 A

1	A-1
2	ABILITY
6	ABLE
5	ABOUT
3	ABOVE
3	ABSTRACT
2	ACADEMY
3	ACCESS
0	ACCESSORIES
5	ACCORDANCE
22	ACCOUNTING
1	ACCOUNTABLE
2	ACCOUNTING
1	ACCP
1	ACHIEVE
1	ACHIEVED
1	ACQUIRE
1	ACQUIRED
1	ACQUIRING
11	ACTION
1	ACTIONS
4	ACTIVE
1	ACTIVITIES
5	ACTIVITY
1	AC1
6	ADDITION
4	ADDITIONAL
2	ADJUST
1	ADJUSTMENTS
5	ADMINISTER
1	ADMINISTERING
1	ADMINISTRATIVE
1	ADMITTED/OTHER
3	ADVANCE
8	ADVANCED
3	ADVANCEMENT
3	ADVANCING
5	ADVANTAGE
1	ADVISING
1	AERIAL
1	AFFAIRS
4	AFTER
1	AG
8	AGAINST

93

14 AGENT
6 AGENTS
2 AHEAD
13 AID
1 AID-PART

2 AID-PART
2 AIDS
1 AIR
4 AIR
2 AIRCRAFT

8 AIT
4 ALARM
65 ALL
1 ALLJOB
1 ALCNG

4 ALSO
1 ALTHOUGH
1 ANHYDRICUS
18 AMMUNITION
1 AMPLIFICATIONS

82 AN
442 AND
2 ANNUAL
2 ANNUALLY
2 ANSWER

6 ANTIPODE
1 ANXIOUS
11 ANY
2 APP
1 APPEARS

1 APPENDIX
1 APPLICABLE
1 APPLICABLE
11 APPLICABLE
1 APPLICATION

1 APPLIES
16 APPLY
13 APPROPRIATE
1 APPROVING
1 APTITUDE

22 AR
103 ARE
21 AREA
4 AREAS
1 ARM

0 ARPCREP
1 ARMCRERS

13 ARMS
47 ARMY

1 ARMY'S

5 ARTILLERY
1 ARTILLERY
1 AR0150
1 AR0175
69 AS

3 ASK
1 ASPECTS
1 ASSEMBLE
1 ASSEMBLIES
1 ASSEMBLING

2 ASSIGN
25 ASSIGNED
2 ASSIGNMENT
4 ASSIST
4 ASSISTANCE

1 ASSISTANT
61 AT
1 ATC'S
1 ATSP-TAG-TM-ET
1 ATSMID-IT

1 ATTACH
1 ATTACHING
1 ATTACHMENT
4 ATTACK
1 ATTAINED

1 ATTEND
1 ATTENDING
2 ATTN
1 AUDIO
1 AUDIOVISUAL

1 AUTHENTICATED
1 AUTHORITY
2 AUTHORITY--RECEIPT
2 AUTHORIZATION
1 AUTHORIZATION/LIST

4 AUTHORIZED
2 AUTOMATED
3 AUTOMATIC
1 AUTOMATICALLY
1 AUTOCOR

95

0 AVAILABLE
1 AVCID
2 AMFRO
2 AWARDED
59

1 B-
3 B-
1 BACMIN
1 BADLY
1 BALANCE

1 BALTIMORE
3 BANCAGE
3 BANCAGES
1 BARS
2 BASED

9 BASIC
2 BATTALION
1 BATTERY
1 BCT
69 BE

1 BECAUSE
3 BECOME
17 BEEN
2 BEFORE
5 BELOW

2 BENT
3 BEST
1 BETWEEN
1 BIND
1 BINDER

12 BIOLOGICAL
0 BLANK
3 BLEEDING
2 BLEND
2 BLISTER

2 BLCK
1 BLCKING
1 BOLT
1 BOMBS
1 BOCK

1 BORE
2 BCTH
2 BOTTOM
1 BOULEVARD
1 BOX

2 ACXES
4 BREATHING

2 BRACKEN
1 BRCLIGHT
3 BRUSH

1 BUMPS
2 BULBET
1 HURLAP
3 BUFA
2 BURIED

3 BURMS
2 BUT
25 BY
20 C
3 CAL

1 CALIBER
10 CAPCUFLAGE
1 CAMCUFLAGE
26 CAN
2 CAN'T

2 CANCEL
1 CANCELED
5 CANCELLATION
1 CANMT
3 CANTEEN

1 CAP
1 CAFFER
1 CARBEN
3 CARC
7 CARES

10 CAPEER
1 CAREFULLY
7 CARTER
2 CARTIDGE
21 CASUALTY

8 CASUALTY'S
1 CATALOGS
2 CAUSE
1 CAUSTIC
7 CENTER

1 ENTERED
1 CENTERS
1 CENTIMETERS
2 CENTPAL
2 CERTAIN

1 CHAMBER
1 CHANGE
4 CHANGES
43 CHAP
6 CHAPS

0 CHAPTER
1 CHATON
1 CHATELAIN
2 CHARGING
1 CHAST

2 CHECK
19 CHEMICAL
1 CHEMICAL-BIOLOGICAL
2 CHLORIDE-BICARBONATE
1 CLEAN

1 CIF
1 CIRCLE
1 CLANGING
3 CLASS
1 CLASSES

1 CLASSIFICATION
4 CLEAN
1 CLEANER
4 CLEANING
20 CLEPS

1 CLEARING
29 CLERK
1 CLOSED
3 CLOTH
21 CLOTHING

1 CCDF
1 CCIJUN
1 COLC
1 CCLLAR
1 COLCRED

37 COMBAT
1 COMBINE
1 COMBINED
1 CCME
1 CCMPES

3 COMMANDANT
2 COMMANDER
1 COMPENCE
1 COMPENSURATE
1 COMMERCIAL

AD-A121 093



JOB LANGUAGE PERFORMANCE REQUIREMENTS FOR MOS 764 UNIT
SUPPLY SPECIALIST. (U) DEFENSE LANGUAGE INST LACKLAND
AFB TX ENGLISH LANGUAGE CENTER. 27 MAY 88

272

UNCLASSIFIED

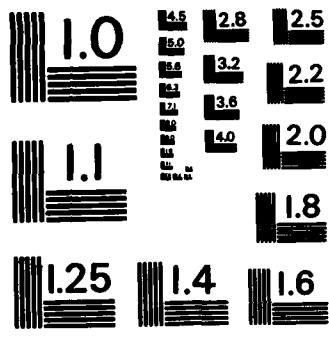
F/G 5/9

NL

END

FILMED
BY
DTIC



MICROCOPY RESOLUTION TEST CHART
NATIONAL BUREAU OF STANDARDS-1963-A

1 COMMON
17 COMPANY
1 COMPETE
2 CCAPETE
37 CCPEETE

5 COME
1 CCPE
1 COMPLETE
1 COMPLETENESS
1 CCPELEX

1 COMPLY
1 COMPONENT
1 COMPONENTS
2 CONCEALMENT
2 CCNCEALMENT--PART

43 CONDITION
86 CONCTIONS
3 CCNDITION
1 CONDITIONS
2 CCNDUCT

2 CCNDUCTING
1 CONFERENCES
1 CCASCIUS
1 CCNSTANTLY
1 CCNTACT

1 CONTENTS
1 CONTINUATION
2 CCNTINUED
10 CONTROL
1 CONTROL--REPAIR

1 COCL
4 COORDINATES
3 COPIES
4 COPY
1 CORN

2 CCRCPECT
2 CORRECTING
1 CCORRECTIVE
2 CCORRECTLY
7 CCORRESPONDENCE

1 CCULD
1 CCUATEPART
12 CCOURSE
4 CCOURSE
8 COVER

3 COVERED
1 COVERING
1 CRAWL
1 CRITERIA
13 CRITICAL

4 CUMULATIVE
2 CURRENT
1 CUSTODY
1 COMBAT
3 CONDITIONS

5 CONDITION
2 CONDITIONS
10 D
80 DA
1 DAILY

2 DAMAGED
3 DARKNESS
1 DATA
1 DATE
1 DAY

4 DAYLIGHT
1 DAYS
1 DEALING
1 DEC
1 DECLARED

5 DECONTAMINATE
1 DECONTAMINATION
1 DEDUCTION
1 DEDUCTION/DISCONTINUANCE
12 DEFENSE

1 DEFENSIVE
1 DEGREE
1 DEWEEV
2 DELEGATION
1 DELIVERY

1 DENTED
3 DEPARTMENT
1 DEPT
2 DESCRIBED
1 DESCRIBES

1 DESCRIPTIONS
1 DESIGNATED
2 DESIGNED
1 DESIRE
4 DESTROY

2 DESTROYED
3 DETECT
1 DETERIORATION
16 DETERMINE
1 DEVELOP

1 DEVELOPER
1 DIA
1 DIAMETER
1 DIFFERENCE

1 DIFFERENCES
5 DIRECT
10 DIRECTED
2 DIRECTLY
2 DIRT

2 DISASSEMBLE
1 DISASSEMBLING
1 DISCREPANCIES
1 DISCUSSES
1 DISPLAYING

1 DISPOSITION
1 DISTIRPITE
3 DISTRIBUTED
2 DISTRIBUTION
1 DIVISICH

1 DIVISIONAL
1 DIVISICHS
12 DO
15 DOCUMENT
7 DOCUMENTS

2 DUDGE
3 DGING
2 DOKIT
2 DUNE
3 DOWN

1 DRAGON
2 DRAM
3 DRESSING
1 DRESSINGS
1 DRAGFLETS

2 DRY
1 DRYCLEANING
2 DS
4 DUE-IN
1 DUE-OUT

1 DUE IN
1 DUNNAGE
10 DURING
1 DUST
16 OUTIES

1 DUTY
3 DX
11 E
9 EACH
1 EAGER

3 EARPLUGS
1 EASTERN
1 EDGES
2 EER
1 EFFECTIVELY

2 EFFECTS
1 EFFICIENT
1 EFFORT
1 EJECT
1 EJECTED

1 ELEVATE
2 ELIGIBLE
2 ELIMINATE
1 ELIMINATED
1 EMPLOYER

2 ENCOUNTER
4 END
1 ENEMY
7 ENGAGE
2 ENLISTED

1 ENROLLMENT
4 ENTER
1 ENTRIES
1 ENVIRONMENTAL
1 ENVIRONMENTAL

1 ENVIRONMENTAL
16 ENVIRONMENTAL
7 ENVIRONMENTAL
1 ENO051
1 ENO055

6 EMS
74 EQUIPMENT
2 ESSENTIALS
1 ESSENTIALS
1 ESTABLISHED

102

1 EVALUATION
36 EVALUATION
1 EVALUATION
4 EVENT
2 EVENTS

2 EXAM
6 EXAM
2 EXERCISES
1 EXERCISES
4 EFFECT

2 EXPECTED
3 EXPECTS
2 EXPENDED
1 EXPERIENCE
1 EXPERT

1 EXPERTS
1 EXPLOSIONS
3 EXPLOSIVES
7 EXPERT
5 EXPOSED

1 EXTENSION
4 EXTRACT
6 EYE
1 EYEPALL
2 EYES

1 E1
1 E5
1 E7
1 E9
1 F

1 FACE
1 FACEPIECE
1 FACILITIES
5 FACILITY
2 FACTORS

1 FAIRIRE
2 FAIL
1 FAILS
35 FAILURE
1 FELL

2 FEASIBLE
5 FEATURES
1 FEED
6 FELLOW
3 FEMALE

1 FEMININE
1 FEWEP
6 FIELD
7 FIGURE
1 FIGURES

13 FILE
5 FILM
1 FILTER
5 FINE
1 FINISHING

9 FIRE
3 FIRING
17 FIRST
1 FIRST-AID
1 FIT

7 FITNESS
3 FIVE
1 FLUSH
1 FLUSHING
96 FM

1 FM'S
1 FOLCFR
3 FOLLOING
2 FOLLOWS
4 FOLLOWUP

144 FOR
2 FOREIGN
70 FCRP
1 FOR PALLY
1 FORMANCE

9 FORPS
3 FORT
5 FORWARD
1 FOUNDATION
2 FOUR

5 FRACTURE
3 FRACTURES
1 FREE
1 FREQUENTLY
27 FRQP

2 FCNT
1 FULL
1 FUNCTIONING
1 FUNCTIONS
2 FURNISH

1 PUNISHED
2 FUTURE

4 G

2 G-TYPE

1 GARNISH

26 GARAGE

4 GAS

1 GASIF

1 GENCERS

11 GENERAL

5 GET

1 GETTING

3 GIVE

3 GIVEN

2 GIVES

2 GLAC

2 GLASS

3 GO

1 GOOD

2 GRADE

1 GRADES

1 GRATUITIOUS

1 GREASE

1 GREATER

2 GRENADE

1 GRENADES

5 GRIC

3 GRCLND

2 GRUP

1 GRUPS

2 GS

1 GUARD

2 GUIDANCE

1 H

13 HANC

6 HANDOCK

4 HANDEKCHIEF

3 HANDLE

2 HARDS

2 HARC

21 HAS

29 HAVE

2 HAZARDS

11 HE

1 HEAD

2 HEADGEAR
2 HEADING
1 HEADQUARTERS
1 HEAP
1 HEARING

3 HELMET
2 HELMETS
1 HELPING
2 HEPE
1 HIGH

4 HIGH-PRIORITY
7 HIGHER
1 HIGHER-ECHELON
3 HIM
11 HIS

3 HIT
3 HCLDEFS
1 HOLES
3 HGOO
1 HORIZONTAL

1 HUTLINE
1 HOURS
7 HOM
2 HOMEVER
20

1 IDENTIFIABLE
2 IDENTIFIED
1 IDENTIFIES
4 IDENTIFY
1 IDENTIFYING

27 IF
19 II
9 III
1 ILVE
5 IMMEDIATE

2 IMMEDIATELY
1 IMMCRILIZE
1 IMPAIR
1 IMPCRPTANT
1 IMPROVE

1 IMPROVING
210
2 INCLUDE
2 INCLUDES
2 INCLUDING

1 INCREASED
 1 INDEX
 1 INDICATE
 1 INDICATES
 1 INDIVIDUAL
 26 INDIVIDUALS
 1 INK
 17 INFORMATION
 1 INFORMATION
 3 INFORMATION
 3 INITIAL
 1 INITIALLY
 2 INITIATIVE
 2 INJECT
 2 INJECTION
 1 INJECTIONS
 3 INJECTOR
 1 INJURED
 2 INJURIES
 1 INK
 1 INLET
 1 INPUT
 1 INS
 1 INSERT
 1 INSIDE
 6 INSPECT
 1 INSPECTED
 2 INSPECTION
 7 INSTALLATION
 1 INSTRUCTIONS
 2 INSURE
 1 INTERVALS
 4 INTC
 3 INTRODUCTION
 1 INTRODUCTION
 5 INVENTORY
 1 INVENTORING
 1 INVERTED
 1 INVOLVED
 2 INVOLVES
 1 INVOLVING
 1 INOC03
 1 INOC09
 1 INCL1
 1 INOC29

1 LOCATION
1 IRRITATING

18 IS

25 ISSUE
1 ISSUED

4 ISS
2 ISSU
1 ISO220
1 ISC221
1 ISO262

16 IT
3 ITP
10 ITPS
1 ITETMS
5 IV

1 J
1 JANUARY
1 JAN
39 JOB
1 JOINT

1 JULIAN
1 JUMP
1 JUN
3 JUST
1 JUTTING-OUT

2 KEEP
5 KEY
2 KEYS
4 KIT
1 KNOCKED

6 KNCH
2 KNOWLEDGE
2 KNCHW
1 L
7 LADDER

1 LAND
1 LANDING
1 LANGUAGE
3 LAUNCHER
1 LAUNCHERS

13 LAUNDRY
1 LAW
1 LAYING
1 LEADERSHIP
1 LEAKS

7 LEARN
1 LEARNED
3 LEARNING
5 LEAST
1 LECTURES

3 LEGS
1 LEFT
3 LEG
1 LEGS
2 LESS

22 LESSON
1 LESSONS
1 LET
1 LETTER
65 LEVEL

10 LEVELS
1 LEFT
1 LIBRARIES
1 LIDS
3 LIFESAVING

3 LIMITED
1 LINE
5 LIST
6 LISTED
4 LISTS

2 LIVE
6 LOAD
1 LOAD-BEARING
2 LOADING
1 LOCAL

1 LOCAL
5 LOCATE
2 LOCATED
9 LOCATION
1 LOCKS

2 LOG
2 LONGER
1 LONGER
2 LOSS
2 POST

1 NOT
1 LOW-FLYING
2 LOWER
1 LOWEST
1 LSA

105

1 LUBRICANT
1 LUBRICATION
1 LUBRICATION
2 LYING
2 LO-76Y1/2

3 MAINTAINING
1 MAINTENANCE
7 MAGNETIC
5 MAGAZINES
22 MAINTAIN

5 MAINTAINING
1 MAINTENANCE
25 MAINTENANCE
4 MAJCP
4 MAKE

1 MAKING
3 MALE
1 MALFUNCTION
1 MALFUNCTIONS
1 MAN

12 MANAGEMENT
1 MANCATORY
1 MANPOWER
44 MANUAL
1 MANUAL

1 MANUAL-GUIDED
1 MANUAL-PISTOL
1 MANUAL/MECHANICAL
12 MANUALS
2 MANY

11 MAP
4 MARKSMANSHIP
1 MAPYLAND
1 MASCULINE
36 MASK

3 MASK-T-MOUTH
1 MASKED
1 MASKING
1 MASSAGE
1 MASTER

1 MASTERS
0 MATERIAL
17 MATERIALS
1 MATERIEL
9 MATERIEL

3 MATTER

17 MAY

4 MEANS

1 MEANTIME

4 MEASURE

73 MEASURES

1 MEASUREMENT

1 MEDIAN

4 MEDICAL

32 MEET

1 MEETS

7 MEMBER

2 MEN

10 METAL

3 METERS

5 METHOD

2 METHODS

1 MILDEN

1 MILE

6 MILITARY

1 MINIMM

3 MINIMUM

1 MINUTE

7 MINUTES

1 MISFIRE

1 MISSILE

4 MISSION

1 MIST

2 MIXTURE

2 ML

1 ML3

23 ML6AL

2 ML7AL

1 ML9LLAL

1 MODIFICATION

2 MODIFIED

1 MODULAR

3 MONTHLY

1 MONTHS

6 MORE

29 MS

2 MS'S

2 MSST

1 MOTION

1 MOTIVATION

2 THROUGHOUT
1 THIS
2 TIME
6 TITLE
11 TM

264 TO
1 TGD
4 TCE
1 TONE
1 TGCKIT

3 TOOLS
1 TOOTHBRUSH
1 TOWARD
1 TOXIC-AGENT
1 TRAIN

2 TRAINED
1 TRAINEE
1 TRAINER
45 TRAINING
3 TRANSACTION

2 TRANSACTIONS
4 TRANSFER
1 TRANSFERRED
2 TRANSFERRING
1 TREAT

1 TREATED
2 TREATMENT
1 TRACCP
2 TRCBLB
1 TROUBLESHOOTING

2 TUBE
2 TUPH
10 TURN-IN
1 TURN-IN-MANUAL/MECHANICAL
1 TURNING

1 TWICE
9 TWO
3 TYPE
2 UNCONSCIOUS
85 UNDER

1 UNDERGO
1 UNDERGONE
2 UNDERSTAND
1 UNDERSTOOD
86 UNIT

112

13 UNITS
1 UNLESS
3 UNLC/D
2 UNLOADING
1 UNMASKED

2 UNSERVICABLE
7 UP
5 UPON
1 UPPER
2 UPWARD

7 US
31 USE
2 USED
33 USING
2 USUALLY

2 V
2 VA
1 VALUE
2 VALVE
1 VERIFICATION

2 VERIFIED
3 VERIFY
1 VI
1 VICINITY
1 VII

2 VIRGINIA
1 VISUAL
1 VISUALLY
1 VOMITING
2 VOR

1 V345
2 WANT
1 WANTS
6 WARFARE
1 WARNING

1 WAS
1 WASHINGTON
6 WATER
23 WEAFCH
26 WEAPONS

4 WARING
2 WATHER
1 WEEKLY
7 WELL
1 WELL-TRAINED

2 WERE
6 WHAT
34 WHEN
4 WHERE
1 WHETHER

26 WHO
10 WHICH
3 WHOSE
1 WILL
85 WILL

1 WILLING
1 WIRE
40 WITH
15 WITHIN
2 WITHOUT

1 WOMEN
1 WORD
9 WORK
1 WORKED
1 WORKER

1 WORKING
2 WOUND
2 WOUNDED
1 WOUNDS
1 WRITE

2 X
1 YEAR
1 YELLOW
298 YOU
1 YOUNGER

128 YOUR
6 YOURSELF
1 Y10
2 ZERC
2 ZERCED

WER049I END SORT PH
WER055I INSERT 1565, DELETE 1565
WER137I DATA RIAS = 00
WER124I TRK OVER-ALLOC FACTOR= PRIM/USED=020
WER054I RCD IN , OUT
WER169I TPF'S APPLIED 1234
WER052I END SYMSORT , THER02D7DUMP

0005001000001500002000025000300003500040000450005000550006000065000700007500080000850009000095000100000105000110000

```

HEADER1 CUT=50,CON=WORD FREQUENCY DISTRIBUTION'
HEADER2 OUT=001,CON=FR EQUENC Y/WORD'
HEADER3 OUT=033,CON=FR EQUENC Y/WORD'
HEADER2 OUT=065,CON=FR EQUENC Y/WORD'
HEADER3 OUT=103,CON=FR EQUENC Y/WORD'
HEADER3 CUT=1,CON=
MOVE OUT=1,CON=SPACE,LEN=132
MOVE IN=1,CUT=001,LEN=5
MOVE IN=6,OUT=8,LEN=25
@EAC SYSUT1
MOVE IN=1,OUT=33,LEN=5
MOVE IN=6,OUT=40,LEN=25
PEAC SYSUT1
MOVE IN=1,OUT=65,LEN=5
MOVE IN=6,OUT=72,LEN=25
READ SYSUT1
MOVE IN=1,OUT=56,LEN=5
MOVE IN=6,OUT=103,LEN=25
WRITE SYSUTZ

```

CINCODE 70 EOJCODE 0 CONSTANTS 0 FULLWORDS 0 RETURN 0

0005000100001500002000025000300003500040000450005000550006000065000700007500080000850009000095000100001050011000

JOBNAME=THER0207 STEP=

DDNAME=SYSPRINT UNIT= DSN=THE.WORD.CMT
DDNAME=SYSUT1 UNIT= DSN=SYS0126.T063529.RV000.THER0207.R0000709 SER=U0330E
DDNAME=SYSUT2 UNIT=602 SER=
DDNAME=SYSIN UNIT=603

SYST1 INPUT	1565	SYST2 OUTPUT	391	SYST3 OUTPUT	0	SYST4 OUTPUT	0
LRECL	30	LRECL	133	LRECL	0	LRECL	0
BLKSIZE	642C	BLKSIZE	133	BLKSIZE	0	BLKSIZE	0

FREQUENCY/DISTRIBUTION

FREQUENCY/WORD

FREQUENCY/WORD	FREQUENCY/WORD	FREQUENCY/WORD	FREQUENCY/WORD	FREQUENCY/WORD	FREQUENCY/WORD
442 ANC	406 THE	298 YOU	264 TO	264 TO	264 TO
219 A	211 OF	210 IN	203 TEST	203 TEST	203 TEST
148 FOR	128 YOUR	126 STUDY	103 ARE	103 ARE	103 ARE
98 MUST	96 FM	89 UNDER	98 CONDITIONS	98 CONDITIONS	98 CONDITIONS
88 THIS	86 UNIT	85 WILL	82 AN	82 AN	82 AN
82 TASK	81 PERFORMANCE	80 DA	75 SKILL	75 SKILL	75 SKILL
74 EQUIPMENT	73 MEASURES	72 PERFORM	70 FORM	70 FORM	70 FORM
69 AS	65 RE	68 STANDARDS	65 ALL	65 ALL	65 ALL
65 LEVEL	61 AT	59 OR	55 SUPPLY	55 SUPPLY	55 SUPPLY
54 ON	57 TASKS	54 REFERENCES	48 B	48 B	48 B
48 THESE	47 ARMY	45 TRAINING	44 MANUAL	44 MANUAL	44 MANUAL
43 CHAP	43 CONDITION	41 NECESSARY	40 WITH	40 WITH	40 WITH
39 JOB	38 IS	37 COMBAT	37 COMPLETE	37 COMPLETE	37 COMPLETE
37 REQUEST	36 EVALUATION	36 MASK	35 FAILURE	35 FAILURE	35 FAILURE
35 NO	35 ORGANIZATIONAL	35 SITUATION	34 RESULT	34 RESULT	34 RESULT
34 WHEN	33 RIFLE	33 SUPPLIES	33 USING	33 USING	33 USING
32 WEST	31 PREPARE	29 CLERK	29 HAVE	29 HAVE	29 HAVE
29 MCS	27 FROM	27 IF	26 CAN	26 CAN	26 CAN
26 GARRISON	26 INDIVIDUAL	26 PERCEPT	26 WEAPONS	26 WEAPONS	26 WEAPONS
26 WHICH	25 ASSIGNED	25 BY	25 ISSUE	25 ISSUE	25 ISSUE
25 MAINTENANCE	25 NO-GO	24 PERFORMANCE	24 THAT	24 THAT	24 THAT
23 MLAGN	23 MAINTAIN	22 ACCORDING	22 AR	22 AR	22 AR
22 LESSON	22 CARRYING	22 TEC	22 AREA	22 AREA	22 AREA
21 CASUALTY	21 CARRYING	21 HAS	21 ORGANIZATION	21 ORGANIZATION	21 ORGANIZATION
20 C	20 I	20 PROTECTIVE	20 REFERENCE	20 REFERENCE	20 REFERENCE
20 THROUGH	19 CHEMICAL	19 IF	19 SCHMCL	19 SCHMCL	19 SCHMCL
19 SOLDIERS	18 AMMUNITION	17 BEEN	17 COMPANY	17 COMPANY	17 COMPANY
17 FIRST	17 INFANTRY	17 MATERIALS	17 MAY	17 MAY	17 MAY
17 PHYSICAL	17 SEC	17 STORAGE	16 APPLY	16 APPLY	16 APPLY
16 DETERMINE	16 DUTIES	16 ENVIRONMENTAL	16 TY	16 TY	16 TY
16 OPERATING	16 SIMULATED	15 DOCUMENT	15 PARA	15 PARA	15 PARA
15 REQUIRED	15 SCRE	15 SOLDIER	15 SUPPORT	15 SUPPORT	15 SUPPORT
15 WITHIN	14 AGENT	14 ORDER	14 PROCEDURES	14 PROCEDURES	14 PROCEDURES
14 SOT	14 TECHNICAL	13 AIC	13 APPROPRIATE	13 APPROPRIATE	13 APPROPRIATE
13 ARMS	13 CRITICAL	13 FILE	13 PANC	13 PANC	13 PANC
13 LAUNDRY'S	13 NERVE	13 NO	13 PERSONAL	13 PERSONAL	13 PERSONAL
13 SOLDIER'S	13 UNITS	12 COURSE	12 DEFENSE	12 DEFENSE	12 DEFENSE
12 DC	12 MANAGEMENT	12 MANUALS	12 NUMBER	12 NUMBER	12 NUMBER
12 POSITION	12 RECORD	12 SUPPLYMAN	12 THERE	12 THERE	12 THERE
11 ACTION	11 ANY	11 APPLICABLE	11 HIS	11 HIS	11 HIS
11 E	11 GENERAL	11 ME	11 BIOLOGICAL	11 BIOLOGICAL	11 BIOLOGICAL
11 MAP	11 NOT	11 ONE	11 PERSONNEL	11 PERSONNEL	11 PERSONNEL
11 PREPARING	11 REGISTER	11 SECTION	11 SUPPLY-MANUAL	11 SUPPLY-MANUAL	11 SUPPLY-MANUAL
11 TH	11 USE	10 CAMOUFLAGE	10 CAREER	10 CAREER	10 CAREER
10 CLEAR	10 CONTROL	10 D	10 DIRECTED	10 DIRECTED	10 DIRECTED
10 DURING	10 ITEMS	10 LEVELS	10 METAL	10 METAL	10 METAL
10 NEXT	10 PERFORMING	10 QUARTERMASTER	10 SUPERVISOR	10 SUPERVISOR	10 SUPERVISOR
10 TURN-IN	10 WHILE	9 DASTC	9 EACH	9 EACH	9 EACH
9 FIRE	9 FORMS	9 III	9 LOCATION	9 LOCATION	9 LOCATION
9 MATERIEL	9 NEEDS	9 REMOVE	9 SECONDS	9 SECONDS	9 SECONDS

118

FREQUENCY/DISTRIBUTION

WORD FREQUENCY DISTRIBUTION

FREQUENCY/WORD

FREQUENCY/WORD	WORD	FREQUENCY	DISTRIBUTION	WORD	FREQUENCY	DISTRIBUTION	
9	SECURITY	9	SHOULD	9	SKILLS	9	SPILL
9	SUBJECTS	9	TWC	9	WORK	8	ACCESSORIES
8	ADVANCED	8	AGAINST	8	ATT	8	ARMCRER
8	AVAILABLE	8	BLANK	8	CASUALTY'S	8	CHAPTER
8	COVER	8	HELP	8	MATERIAL	8	NUCLEAR
8	POINTS	8	PROPERTY	8	SITUATION	8	STATUS
8	SYSTEM	8	TARGETS	8	TESTS	7	CARDS
7	CAPTAIN	7	CENTER	7	CORRESPONDENCE	7	DOCUMENTS
7	ENGAGE	7	ENVIRONMENTAL	7	EXPORT	7	FIGURE
7	FITNESS	7	HIGHER	7	HOM	7	INSTALLATION
7	LADDER	7	LEARN	7	MAGAZINE	7	PEPPER
7	MINUTES	7	NO-GO	7	OPERATIONS	7	OTHER
7	POST	7	PRESENT	7	RESUSCITATION	7	S
7	SERGEANT	7	SERVICE	7	STOPPAGE	7	SUSPENSE
7	TAKE	7	THEM	7	UP	7	US
7	WELL	6	ABLE	6	ADDITION	6	AGENTS
6	ANTIQUOTE	6	CHAPS	6	EPMS	6	EXCHANGE
6	EYE	6	FELLOW	6	FIELD	6	PANDBOOK
6	INSPECT	6	KNOW	6	LISTED	6	LEAD
6	MILITARY	6	MORE	6	PARTS	6	PPRC
6	PUT	6	SELECT	6	TDA	6	TITLE
6	WARFARE	6	WATER	6	W/PAT	6	YOURSELF
5	ABOUT	5	ACCORDANCE	5	ACTIVITY	5	ADMINISTER
5	ADVANTAGE	5	ARTIFICIAL	5	BELOW	5	CANCELLATION
5	COMPLETED	5	DECONTAMINATE	5	DIRECT	5	FACILITY
5	FEATURES	5	FILES	5	FIND	5	FORWARD
5	FRACTURE	5	GET	5	GRID	5	IMMEDIATE
5	INVENTORY	5	IV	5	KEY	5	LEAST
5	LIST	5	LOCATE	5	MAGAZINES	5	MAINTAINING
5	MASTER	5	METHOD	5	NRC	5	NEEC
5	NOTICE	5	PACKAGE	5	PAGE	5	PART
5	PLACING	5	PREPARED	5	PRESCRIBEE	5	PROMOTION
5	PUBLICATIONS	5	QM	5	QUALIFY	5	RECEIVE
5	RECEIVED	5	REQUIRE	5	RESPIRATION	5	RCSTER
5	RUN	5	SELECTED	5	SKIN	5	SOME
5	SYMPTOMS	5	TELLS	5	TERRAIN	5	THOSE
5	UPON	4	ACTIVE	4	ADDITIONAL	4	AFTER
4	ATR	4	ALARM	4	ALSO	4	AREAS
4	ASSIST	4	ASSISTANCE	4	ATTACK	4	AUTHORIZED
4	BREATHING	4	CHANGES	4	CLEAN	4	CLEANING
4	COORDINATES	4	COPY	4	COURSES	4	CUMPLATME
4	DAYLIGHT	4	DESTROY	4	DUE-IN	4	END
4	ENTER	4	EVENT	4	EXPECT	4	EXTPACT
4	FOLLOW	4	G	4	GAS	4	HANDKERCHIEF
4	HIGH-PRESSURE	4	IDENTIFY	4	INTO	4	ISSUES
4	KIT	4	LISTS	4	MAJOR	4	MAKE
4	MARKS/MAN	4	MEANS	4	MEASURE	4	MEDICAL
4	MISSION	4	MUVE	4	NEAR	4	NCH
4	OBTAIN	4	OVER	4	PAN	4	PASS
4	PASSAGE	4	PLACE	4	PRE-POSITIONED	4	PROCESS

FREQUENCY/WORD FREQUENCY/DISTRIBUTION FREQUENCY/WORD

FREQUENCY/WORD	FREQUENCY/WORD	FREQUENCY/WORD	FREQUENCY/WORD	FREQUENCY/WORD	
4	QUALIFICATION	4	REPAIR	4	REQUESTS
4	RESERVE	4	SEE	4	SENTER
4	SOUND	4	SUBCOURSES	4	SUCH
4	THAN	4	TOE	4	TRANSFER
4	WEARING	4	ABOVE	4	ABSTRACT
3	ACCESS	3	ASK	3	AUTOMATIC
3	BACK	3	BANDAGES	3	BECCME
3	BEST	3	BCTH	3	BRUST
3	BURN	3	CAL	3	CAATEEN
3	CARD	3	CLCTH	3	COMMANDANT
3	CCONDITION	3	COVERED	3	CONCTIONS
3	CCONDITION	3	DEPARTMENT	3	DETECT
3	CCONDITION	3	DGNH	3	DRESSING
3	DI	3	EXPLOSIVES	3	EXPESD
3	FEMALE	3	FIVE	3	FOLLOWING
3	FCMT	3	GIVE	3	GIVEN
3	GO	3	HANDLE	3	HELMET
3	HIM	3	HOLDERS	3	HOCC
3	INFORMATION	3	INJECTOR	3	INTRODUCTION
3	ITEM	3	LAUNCHER	3	LEARNING
3	LEE	3	LIFESAVING	3	LIMITED
3	MAGNIFICUN	3	MASK-TO-MOUTH	3	MATTER
3	METERS	3	MONTHLY	3	MOUTH-TO-MOUTH
3	MIS	3	OBJECTS	3	CKW
3	PACKAGES	3	PICK	3	PROFICIENCY
3	PROGRAM	3	PROPER	3	PRCIVE
3	PUBLICATION	3	RACIOLOGICAL	3	READ
3	READING	3	REDUCE	3	REPEPER
3	REPLACE	3	REQUESTING	3	RESIDENT
3	RESPONSIBLE	3	RIGHT	3	ROOM
3	ROUND	3	SET	3	SEVERAL
3	SEVERE	3	SHCT	3	SHOWS
3	SITUP	3	SOLID	3	SCP
3	SPLINTS	3	STATEMENT	3	STERILE
3	STOP	3	STRIKE	3	SUBCOURSE
3	SUPERVISORY	3	TOGLS	3	TRANSACTION
3	TYPE	3	VERIFY	3	WHO
2	ABILITY	2	ACCOUNTING	2	ACJLST
2	ADVANCEMENT	2	AID-PART	2	AIDS
2	AIRCRAFT	2	ANNUALLY	2	ANSWER
2	APP	2	ASSIGNMENT	2	ATTA
2	AUTHORITY--RECEIPT	2	AUTHORIZED	2	EMARC
2	AWARDED	2	BATTALION	2	BEFCRE
2	BEHT	2	BLISTER	2	BLOCK
2	BECK	2	BOXES	2	BROEN
2	BULLET	2	BUT	2	CAN'T
2	CANCEL	2	CAUSE	2	CENTRAL
2	CERTAIN	2	CHECK	2	CHLORIDE-BICARBONATE
2	COMMANDER	2	CONCEALMENT	2	CONCEALMENT--PART
2	CONDUCT	2	CONTINUED	2	CORRECT

120

WORD FREQUENCY DISTRIBUTION

FREQUENCY/WORD

FREQUENCY/WORD

FREQUENCY/WORD

FREQUENCY/WORD

2	CORRECTLY	2	CURRENT	2	CONCTIONS
2	DAMAGED	2	DESCRIBED	2	DESIGNED I
2	DESTROYED	2	DIAT	2	CISASSEMBLE
2	DISTRIBUTION	2	DON'T	2	DCNE
2	DRAW	2	DS	2	DEF
2	EFFECTS	2	ELIMINATE	2	ENCOUNTER
2	ENLISTED	2	EVENTS	2	EXAMPLE
2	EXERCISE	2	EXPENDED	2	EYES
2	FACTORS	2	FAVORABLE	2	FCLLCS
2	FOREIGN	2	FRCMT	2	FURNISH
2	FUTURE	2	GIVES	2	GLAC
2	GLASS	2	GRADE	2	GROUP
2	GS	2	HARD	2	HAZARDS
2	HEADGEAR	2	HERE	2	HOWEVER
2	IDENTIFIED	2	INCLUDE	2	INCLUDES
2	INCLUDING	2	INJECT	2	INJECTION
2	INITIATION	2	INSURE	2	INVOLVES
2	INSURANCE	2	KEYS	2	KNOWLEDGE
2	ISSUING	2	LIVE	2	LOADING
2	KNOWN	2	LONGER	2	LOST
2	LOGGATED	2	LO-74Y1/2	2	MANY
2	LOWER	2	MIXTURE	2	ML
2	MEN	2	MOS'S	2	MCST
2	METAL	2	NATURAL	2	MCO
2	M258	2	NO-GO	2	OBJECT
2	MCG'S	2	OPPORTUNITIES	2	OUTCCRS
2	OPEN	2	PACDING	2	PAIL
2	OUTLINED	2	PASSING	2	PAST-CUE
2	PARAGRAPH	2	PERIOD	2	POINT
2	PAY	2	POSITIONS	2	PRIMARY
2	PCISONING	2	PROCESSING	2	PRCFICIENT
2	PRIVATELY	2	PUBLISHED	2	PURPOSE
2	PROGRAMED	2	RANGE	2	RANKS
2	QUESTIONS	2	REMOVED	2	REPAIRED
2	REFLECTED	2	RESPONSIBILITIES	2	RESPONSIBILITY
2	REFERENCES	2	SAFETY	2	SALE
2	REVISIING	2	SEAL	2	SECURELY
2	SB	2	SERVICABLE	2	SHEET
2	SERGEANTS	2	SIDE	2	SINCE
2	SHUCK	2	SPECIAL	2	SPECIFIC
2	SCOTIUM	2	SPEED	2	STATIONARY
2	SPECIFICALLY	2	STCPTED	2	STORE
2	STEEL	2	SUCCEED	2	SUGGESTIONS
2	STRAPS	2	SURE	2	SURROUNDINGS
2	SUITABLE	2	TEMPORARY	2	TESTED
2	TAUGHT	2	THEY	2	THROUGHOUT
2	TEXTS	2	TRANSACTIONS	2	TRANSFERRING
2	TIME	2	TUBE	2	TURN
2	TREATMENT	2	UNLOADING	2	UNSERVICABLE
2	UNCONSCIOUS	2	USUALLY	2	V
2	UPWARD	2		2	

12

40 FREQUENCY DISTRIBUTION

FREQUENCY/WORD

FREQUENCY/WORD

FREQUENCY/WORD	FREQUENCY/WORD	FREQUENCY/WORD	FREQUENCY/WORD
2 VA	2 VALVE	2 VERIFIED	2 VIRGINIA
2 VOR	2 WANT	2 WEATHER	2 WERE
2 WITHOUT	2 WOUND	2 WOUNDED	2 X
2 ZERO	2 ZERGED	1 A-1	1 ACCOUNTABLE
1 ACCP	1 ACQUIRE	1 ACTIONS	1 ACTIVITIES
1 ACQ	1 ACQUIRING	1 ADMINISTERING	1 ADMINISTRATIVE
1 ACPTD/OTHER	1 ADJUSTMENTS	1 ADVISING	1 AERIAL
1 AFFAIRS	1 ADVANCING	1 AID--PART	1 AIM
1 ALLJOB	1 AG	1 ALTHOUGH	1 AMBITIOUS
1 AMMUNITIONS	1 ALONG	1 APPEARS	1 APPENDIX
1 APPLICABLE	1 ANXIOUS	1 APPLICATION	1 APPLIES
1 APPROVING	1 APPLICABLE	1 ARM	1 ARMCRS
1 ARMY'S	1 ARTITUDE	1 ARO150	1 ARO175
1 ASPECTS	1 ARTILLERY	1 ASSEMBLIES	1 ASSEMBLING
1 ASSISTANT	1 ASSEMBLE	1 ATSM-TMG-TM-ET	1 ATSM-TM-IT
1 ATTACH	1 ATC'S	1 ATTACHMENT	1 ATTAINED
1 ATTEND	1 ATTACHING	1 AUDIO	1 AUDIOVISUAL
1 AUTHENTICATED	1 ATTENDING	1 AUTHORIZATION/LIST	1 AUTOMATICALLY
1 AUTOVON	1 AUTHORITY	1 R-1	1 BACKWARD
1 BADLY	1 AVOID	1 BALTYMOR	1 BARS
1 BATTERY	1 BALANCE	1 BECAUSE	1 BETWEEN
1 BIND	1 BCT	1 BLOWING	1 BCLT
1 BOMBS	1 BINDER	1 BOULEVARD	1 BOX
1 BROUGHT	1 BORE	1 BURLAP	1 CALIBER
1 CAMOUFLAGE	1 BUILOS	1 CAMOY	1 CAP
1 CAPPER	1 CANCELED	1 CAREFULLY	1 CRYALOGS
1 CALSTIC	1 CARBON	1 CENTERS	1 CENTIMETERS
1 CFAMRA	1 CHANGED	1 CHARCOAL	1 CHARGE
1 CHART	1 CHEMICAL--BIOLOGICAL	1 CLEAN	1 CTF
1 CIRCLE	1 CHANGING	1 CLASSES	1 CLASSIFICATION
1 CLEANER	1 CLEARING	1 CLCSD	1 CDCE
1 COLUMN	1 COLD	1 COLLAR	1 COLCRED
1 COMBINE	1 COMBINED	1 COME	1 COMES
1 COMPECE	1 COMMENSURATE	1 COMMERCIAL	1 COMPCA
1 COMPLETE	1 COMPLETELY	1 COMPLETELY/CLED	1 COMPLETENESS
1 COMPLEX	1 COMPLY	1 COMPONENT	1 COMPCENTS--
1 CONDITIONS	1 CONFERENCE	1 CONSCIOUS	1 CONSTANTLY
1 CONTACT	1 CONTENTS	1 CONTINUATION	1 CONTROL--REPAIR
1 CCCL	1 CORR	1 CORRECTIVE	1 CCULC
1 CCOUNTERPART	1 COVERING	1 GRAML	1 CRITRIA
1 CUSTODY	1 CONDITION	1 DAILY	1 DATA
1 DATE	1 DAY	1 DAYS	1 DEALING
1 DEC	1 DECLARED	1 DECONTAMINATION	1 DECUCTION
1 DEFENSIVE	1 DEFENSIVE	1 DEGREE	1 DELTIVE
1 DELIVER	1 DENTED	1 DEFGT	1 DESCRIBES
1 DESCRIP	1 DESIGNATED	1 DESTRE	1 DETERIORATION
1 DEVELOP	1 DEVELOPED	1 DTAL	1 DIALING
1 DIAMETER	1 DIFFERENCE	1 DIFFERENCES	1 DISASSEMBLING
1 DISCREPANCIES	1 DISCUSSES	1 DISPLAYING	1 DISPOSITION

FREQUENCY/WORD WORD FREQUENCY DISTRIBUTION FREQUENCY/WORD

1	DISTRIBUTE	1	DIVISION	1	DIVISIONAL	1	DIVISIONS
1	DRAGON	1	DRESSINGS	1	DRCPLETS	1	DRY CLEANING
1	DUS-OUT	1	DUE IN	1	DUNNAGE	1	DUST
1	DUTY	1	EAGER	1	EARPLUGS	1	EASTERN
1	EGGES	1	EFFECTIVELY	1	EFFICIENT	1	EFFORT
1	EJECT	1	EJECTED	1	ELEVATE	1	ELIMINATED
1	EMPLOYER	1	ENEMY	1	ENRCLLMENT	1	ENTRIES
1	ENVIRONMENTAL	1	ENVIRONMENTAL	1	ENVIRONMENTAL	1	ENVOISI
1	ENQ055	1	ESSENTIALS	1	ESTABLISHED	1	EVALUATION
1	EVALUATION	1	EXERCISES	1	EXPERIENCE	1	EXPFPT
1	EXPERTS	1	EXPLOSIONS	1	EXTENSION	1	EYERALL
1	E1	1	E5	1	E7	1	E9
1	F	1	FACE	1	FACEPIECE	1	FACILITIES
1	FAILURE	1	FAILS	1	FALL	1	FEED
1	FEMININE	1	FEVERISH	1	FIGURESTING	1	FILTEPS
1	FINISHING	1	FIRSTAID	1	FIT	1	FIVSH
1	FLASHING	1	FLASHING	1	FOLDRE	1	FORMALLY'S
1	FORMANCES	1	FOUNDATION	1	FREQUENT	1	FREQUENTLY
1	FULL	1	FOUNDATIONS	1	FUNCTIONS	1	FURNISHED
1	GARNISHING	1	GAS	1	GENDERS	1	GETTING
1	GAUDI	1	GRABES	1	GRATUITOUS	1	GREASE
1	GREATER	1	GRENADES	1	GRUUPS	1	GUARDI
1	H	1	HANDS	1	HEAD	1	HEADQUARTERS
1	HEAR	1	HEARING	1	HELPING	1	HIGH
1	HIGHER-ECHELON	1	HILG	1	HORIZONTAL	1	HOTLINE
1	HQS	1	HILG	1	HORIZONTAL	1	IDENTIFYING
1	HYDRA	1	IDENTIFIABLE	1	IDENTIFIES	1	IMPACTANT
1	IMPROVE	1	IMMUNIZABLE	1	IMPAIR	1	INDEX
1	INDICATE	1	IMPROVING	1	INCREASED	1	INTELIGALE
1	INFCRY	1	INDICATES	1	INDIVIDUAL	1	INJURED
1	INK	1	INITIALLY	1	INJECTIONS	1	INS
1	INERT	1	INLET	1	INPUT	1	INSTRCTIONS
1	INTERVALS	1	INSIDE	1	INSPECTED	1	INVERTED
1	INVOLVED	1	INTRODUCTION	1	INVENTORING - INDEA	1	IN0009
1	INJ013	1	INVOLVING	1	IN0023	1	IS0221
1	ISSUED	1	IN0029	1	IS0221	1	JANUARY
1	IT-ETMS	1	IS0220	1	JANUARY	1	JUMP
1	JOINT	1	JUNIAN	1	JUMP	1	JUMP
1	JUTTING-OUT	1	KNOCKED - OUT	1	LAUNCHES	1	LAND
1	LANDING	1	LANGUAGE	1	LAUNCHES	1	LAW
1	LAYING	1	LEADERSHIP	1	LEAKS	1	LEARNED
1	LECTURES	1	LEFT	1	LEG	1	LESSERS
1	LET	1	LETTER	1	LEFT	1	LISPARIES
1	LICS	1	LINE	1	LOAD-BEARING	1	LOCAL
1	LOCAL	1	LOCKS	1	LOOSE	1	LOSE
1	LOT	1	LOW-FLYING	1	LOOSE	1	LEA
1	LUBRICATING	1	LUBRICATING	1	LUBRICATION	1	PACHTREUMS
1	MAINTENANCE	1	MAKING	1	MALFUNCTION	1	MALFUNCTIONS
1	MAN	1	MANDATORY	1	MANPOWER	1	MANUAL
1	MANUAL-GUIDED	1	MANUAL-PISTOL	1	MANUAL/MECHANICAL	1	MARYLAND

123

WORD FREQUENCY DISTRIBUTION
 FREQUENCY/WORD

FREQUENCY/WORD

1	MASCULINE	1	MASKED	1	MASKING	1	MESSAGE
1	MASTERED	1	MATERIEL	1	MEANTIME	1	MEASURES
1	MECA	1	MEETS	1	MILDEW	1	MILE
1	MINIMM	1	MINUTE	1	MISFIRES	1	MISSILE
1	MIST	1	ML2	1	MISLAL	1	MODIFICATION
1	MODULAR	1	MCNTS	1	MOTION	1	MOTIVATION
1	MCUTH	1	MOUTH-TOMOUTH	1	MCUTHPIECE	1	MOVING
1	MUCH	1	MJD	1	MUNITION	1	MOS'S
1	M17	1	MISLAL	1	M2	1	M203
1	M203	1	M3A1	1	M47	1	M54
1	N	1	NAME	1	NATIONAL	1	NAVIGATION
1	NEARBY	1	NEEDED	1	NEUTRAL	1	NEWPORT
1	NEAS	1	NIGHT	1	NORMAL	1	NCSE
1	NOTE	1	NOTED	1	NOTIFICATION	1	NUMPERING
1	NUMBERS	1	OBTAINED	1	OBTAINING	1	CCUR
1	OCCURS	1	OPERATOR'S	1	OFFICE	1	GIL
1	OJT	1	ON-THE-JOB	1	OPERATE	1	OPERATOR'S
1	OPERATORS	1	OPERATING	1	OPTIONAL	1	ORDERED
1	GRDES	1	ORIENT	1	OTHERS	1	OTHEPWISE
1	OUTLET	1	OUTSTANDING	1	P	1	PACKET
1	PAINT	1	PALM	1	PAPER	1	PARTICIPATE
1	PATCHES	1	PE	1	PEN	1	PENCIL
1	PER	1	PERFORMANCES	1	PERMETER	1	PERPOICE
1	PERSON	1	PERSONAL	1	PERTAINING	1	PERM
1	PHOTOGRAPH	1	PICKUP	1	PICHEERING	1	PISTCL
1	PISTOLS	1	PLANNED	1	PLAY	1	PLC
1	PL/CH	1	PORN	1	POTENTIAL	1	POMCR
1	PRACTICE	1	PRACTICING	1	PREFITTED	1	PREPARATION
1	PRESENCE	1	PRESENTED	1	PRINCIPLES	1	PRINTED
1	PRIGR	1	PPCABLE	1	PRODUCED	1	PROFESSIONAL
1	PROMINENT	1	PROMOTE	1	PRCMCTD	1	PROPONENT
1	PROTECT	1	PROTECTION	1	PRCTRACTOR	1	PRCVIDES
1	PROCEDURES	1	PTC	1	PUBLICATIONS-INDEX	1	PULLTHE
1	PUSHED	1	PUSHUP	1	QMO012	1	CMOC13
1	QMO121	1	QMO374	1	QMO375	1	QMO395
1	QMO563	1	QMC622	1	QUALIFIED	1	QUANTITIES
1	QUARTER	1	QUESTION	1	RANK	1	RAPICLY
1	RATE	1	RATIONS	1	REACH	1	READILY
1	READINESS	1	READING--BASIC	1	READJUST	1	READY
1	REAR	1	REASON	1	PEASSEMBLE	1	RECEIPT/ANEX
1	RECEIVES	1	RECLASSIFIED	1	RECOGNIZE	1	RECCOMENDED
1	RECORDED	1	RECORDING	1	RECUPIPING	1	REALIST
1	REENLISTMENT	1	REFER	1	REFERRED	1	RELATING
1	RELATIVE	1	RELATIONSHIP	1	RELATIVELY	1	RELEASE
1	REMAINING	1	REMOVING	1	RCPERT	1	REPERENCE
1	REPETITION	1	REPORT	1	REPCRTABLE	1	REPORTING
1	REPRESENT	1	REQUIREMENTS	1	REQUIRING	1	REQUISITION
1	RESIDENCE	1	RESIDUE	1	RESTORING	1	RESTRICTED
1	RESUIT	1	RETAIN	1	RETAIHING	1	RETESTED
1	RETURN	1	RETURNED	1	REVIEWED	1	REWARDING

124

WORD FREQUENCY DISTRIBUTION
FREQUENCY/WORD

FREQUENCY/WORD

1	RIFIE	1	RIFLE--PREVENTING	1	RIFLE-BORE	1	RIFLES
1	ROAD	1	ROTATE	1	ROUND	1	ROM
1	RUBBER	1	SALT	1	SAME	1	SANITATION
1	SCALE	1	SCHEDULED	1	SCHEDULES	1	SCOPE
1	SCORES	1	SEATED	1	SECOND	1	SECRETARY
1	SECURED	1	SEEING	1	SELECTED	1	SELECTS
1	SELF-PACING	1	SERID	1	SENDS	1	SENT
1	SEPARATE	1	SERIAL	1	SERVE	1	SERVED
1	SEVEN	1	SHARPLY	1	SHIPPING	1	SHIRT
1	SFCRI	1	SHRUTS	1	SHCW	1	SHCMA
1	SHUTTLE	1	SIGHT	1	SIGN	1	SIGNATURE
1	SIDPIED	1	SIGNS	1	SIMPLE	1	SIMULATE
1	SINGULAR	1	SITUATIONS	1	SKILL	1	SKILLED
1	SLIDES	1	SLING	1	SLCMLY	1	SMA
1	SPCKEROCKETS	1	SMOOTH	1	SOAPY	1	SOMETHING
1	SPECIALIST	1	SPLINT	1	SPLINTING	1	SPLITS
1	SPRAYING	1	SP4	1	STACK	1	STAFF
1	STAND	1	STANGAROSYOU	1	STATIONED	1	STC
1	STEP	1	STEP-BY-STEP	1	STICKS	1	STILL
1	STOCK	1	STOCKED	1	STOPEU	1	STRENGTH
1	STRIKING	1	STRIPS	1	STUDIED	1	STUDYING
1	SUBMIT	1	SUCCESS	1	SUPERIORS	1	SUPERVISE
1	SUPERVISION	1	SUPPLMAN	1	SUPPLY	1	SUPPLYMEN
1	SUPPORTED	1	SUSPECTED	1	SYSTEMS	1	SOLICIER
1	S4	1	TAP	1	TAAK	1	TAKEN
1	TALLATION	1	TEARS	1	TAFES	1	TARGET
1	THIGH	1	THIT	1	TELEPHONE	1	TENTAGE
1	TOCAY	1	TONE	1	THIRD	1	THUS
1	TCWARD	1	TOXIC-AGENT	1	TOCLKIT	1	TOOT-PBRUSH
1	TRAINER	1	TRANSFERRED	1	TREAT	1	TREATMEE
1	TROOP	1	TROUBLESHOOTING	1	TUPH-IN-MANUAL/MECHANICA	1	TYPING
1	TWICE	1	UNDERGO	1	UNDERGONE	1	UNDERSTOOD
1	UNLESS	1	UNMASKED	1	UPPER	1	VALUE
1	VERIFICATION	1	VI	1	VICINITY	1	VII
1	VISUAL	1	VISUALLY	1	VCMITTING	1	V345
1	WANTS	1	WARNING	1	WAS	1	WASHINGTON
1	WEEKLY	1	WELL-TRAINED	1	WHETHER	1	WILL
1	WILLING	1	WIRE	1	WCMEN	1	WORC
1	WORKED	1	WORKER	1	WORKING	1	WOUNDS *
1	WRITE	1	YEAR	1	YELCWH	1	YOUNGER

125

1 MOUTH
3 MOUTH-TO-MOUTH
1 MOUTH-TOMOUTH
1 MOUTHPIECE
4 NOYE

1 MOWING
1 MUD
1 MUD
98 MUST
1 MUUNTION

1 MOS'S
1 M03
3 M16A1
1 M17
1 M191LA1

1 M2
1 M2C3
1 M203
2 M25E
2 M3A1

1 M47
1 M54
2 M60
1 N
1 NAME

1 NATICNAL
2 NATURAL
1 NAVIGATION
5 NRC
2 NCO

2 MCC'S
4 MEAR
1 MEARBY
41 NECESSARY
5 NEED

1 NEEDED
9 NEEDS
13 NERVE
1 NEUTRAL
1 NEN

1 NEMFORT
1 NEMS
10 NEXT
1 NIGHT
35 NU

126

25 NC-GC
7 NO-GO
1 NORMAL
1 NCSE
11 NOT

1 NCTE
1 NC
5 NOT
1 NOTIFICATION
4 NDH

8 NUCLEAR
12 NUPPEP
1 NUMBERING
1 NUMBERS
13 NO

2 NO-GO
2 OBJECT
3 OBJECTS
4 OBTAIN
1 OBTAINED

1 OBTAINING
1 OCCUR
1 OCCAS
1 OPERATOR'S
211 OF

1 OFFICE
1 OIL
1 OJI
50 ON
1 ON-THE-JOB

11 ONE
2 OPERA
1 OPERATE
16 OPERATING
2 OPEATION

7 OPERATIONS
1 OPEATOR'S
1 OPEATERS
1 OPEATING
2 OPPORTUNITIES

1 ADDITIONAL
29
14 ORDER
1 ORDERED
1 ORDERS

2

21 ORGANIZATION
35 ORGANIZATIONAL

1 ORIENT
7 OTHER
1 OTHERS

1 OTHER
2 OUTLOOK
1 OUTLET
2 OUTLINED
1 OUTSTANDING

4 OVER
3 OWN
2 OWNED
1 P
5 PACKAGE

3 PACKAGES
1 PACKET
2 PADDING
5 PAGE
2 PAIL

1 PAINT
1 PALM
4 PAM
1 PAPER
15 PARA

2 PARAGRAPH
5 PART
1 PARTICIPATE
2 PARTICULAR
6 PARTS

4 PASS
4 PASSAGE
2 PASSING
2 PAST-DUE
3 PATCHES

2 PAY
2 PAYROLL
1 PE
1 PEN
1 PENCIL

1 PER
72 PERFORM
81 PERFORMANCE
1 PERFORMANCES
3 PERFORMED

128

10 PERFORMING
24 PERFORMANCE

1 PERIMETER
2 PERIOD
1 PERPOISE

1 PERMANENT
13 PERMANENT
11 PERSONNEL
1 PERSONAL
1 PERTAINING

1 PERM
1 PHOTOGRAPH
17 PHYSICAL
3 PICK
1 PICKUP

1 PIONEERING
1 PISTOL
1 PISTOLS
4 PLACE
5 PLACING

1 PLANNED
1 PLAY
1 PLC
2 POINT
8 POINTS

2 POISONING
1 PCNCHO
1 PORP
2 PORTION
12 POSITION

2 POSITIONS
7 PCST
1 POTENTIAL
1 POWDER
6 PPRC

1 PRACTICE
1 PRACTICING
4 PRE-POSITIONED
1 PREFITTED
1 PREPARATION

3 PREPARE
5 PREPARED
11 PREPARING
5 PRESCRIBED
1 PRESENCE

129

7 PRESENT
1 PRESENTED
2 PRIMARY
1 PRINCIPLES
1 PRINTEC

1 PR
2 PP
1 PROBABLE
14 PROCEDURES
2 PROCEDURES--PART

4 PROCESS
2 PROCESSING
1 PROCUCED
1 PROFESSIONAL
3 PROFICIENCY

2 PROFICIENT
3 PROGRAM
2 PROCFAMED
3 PROGRESS
1 PROMINENT

1 PROMOTE
1 PROMOTED
5 PROMOTION
3 PROMOTER
8 PROPERTY

1 PROCFMENT
1 PROTECT
1 PROTECTION
20 PROTECTIVE
1 PROTRACTOR

3 PROVIDE
2 PROVIDED
1 PROVIDES
1 PROCEDURES
1 PTC

3 PUBLICATION
5 PUBLICATIONS
1 PUBLICATIONS--INDEX
2 PUBLISHED
PULLTIME

2 PROPOSE
1 PUSHED
1 PUSHUP
6 PUT
5 QM

3 OMS
1 OM0C12
1 OM0C13
1 U*0121
1 UMG374

1 OM0375
1 OM0376
1 OM0377
1 UM0622
4 QUALIFICATION

1 QUALIFIED
5 QUALIFY
1 QUANTITIES
1 QUARTER
10 QUARTERMASTER

1 QUESTION
2 QUESTIONS
3 RADICLICAL
2 RAGS
2 RANGE

1 RANK
2 RANKS
1 RAPIDLY
1 RATE
1 RAT IONS

1 REACH
3 READ
1 REACILY
1 READINESS
3 REACTING

1 READING—BASIC
1 READJUST
1 READY
1 REAR
1 REASON

1 REASSEMBLE
26 RECEIPT
1 RECEIPT/ANNEX
5 RECEIVE
5 RECEIVED

1 RECEIVES
3 RECEIVING
1 RECLASSIFIED
1 RECOGNIZE
1 RECOMMENDED

131

12 RECCAD
1 RECCDED
1 RECCDING
4 RECCDS
1 RECCRING

3 RECCN
1 RECCN
1 RECCN
1 REFER
20 REFERENCE

54 REFERENCES
1 REFERRED
2 REFLECTED
11 REGISTER
2 REGULATION

1 RELATING
1 RELATION
1 RELATIONSHIP
1 RELATIVELY
1 RELEASE

1 REMAINDER
3 REMEMBR
9 REMOVE
2 REMOVEC
1 REMOVEING

4 REPAIR
2 REPAIRED
1 REPEAT
1 REFERENCE
2 REFERENCES

1 REPETITIONS
3 REPLACE
1 REPORT
1 REPORTABLE
1 REPORTING

1 REPRESENT
2 REPRESENTS
37 REQUEST
3 REQUESTED
1 REQUESTING

4 REQUESTS
5 REQUIRE
15 ACQUIRED
1 REQUIREMENTS
1 REQUIRING

132

1 REQUISITION
4 RESEIVE
1 RESIDENCE
3 RESIDENT
1 RESIDUE

5 RESOURCES
2 RESPONSIBILITIES
2 RESPONSIBILITY
3 RESPONSIBLE
1 RESTOPING

1 RESTRICTED
1 RESULT
34 RESULT
7 RESUSCITATION
1 RETAIN

1 RETAINING
1 RETFSTFD
1 RETURN
1 RETURNED
3 REVIEW

1 REVIEWED
2 REVIEWING
1 REWARDING
1 RIFIE
33 RIFLE

1 RIFLE--PREVENTING
1 RIFLE--BORE
1 RIFLES
3 RIGHT
1 ROAD

2 ROD
3 ROOF
5 RCSTER
1 RGTATE
1 ROUND

3 ROUNDS
1 ROM
1 RUBBER
5 RUN

2 SAFETY
2 SALE
1 SALT
1 SAME
1 SANITATION

2 SB
1 SCALE
2 SCHEDULE
1 SCHEDULED
1 SCHEDULES

19 SC
1 SCOPE
15 SCORE
1 SCORES
2 SEAL

1 SEATED
17 SEC
1 SECOND
9 SECNDS
1 SECRETARY

11 SECTION
4 SECURE
1 SECURED
2 SECURELY
9 SECURITY

4 SEE
1 SEEING
1 SELECTED
6 SELECT
5 SELECTED

1 SELECTS
3 SELF
1 SELF-PACING
1 SENC
1 SENDS

4 SENIOR
1 SENT
1 SEPARATE
7 SERGEANT
2 SERGEANTS

1 SERIAL
2 SERIES
1 SERVE
1 SERVED
1 SERVICE

2 SERVICEABLE
3 SET
1 SEVEN
3 SEVERAL
3 SEVERE

1 SHARPLY
2 SHEET
3 SHEETS
1 SHIPPING
1 SHIFT

2 SHIP
1 SHIP
3 SHCT
9 SHOULD
2 SHOUT

1 SHOUTS
1 SHON
1 SHON
3 SHCWN
1 SHUTTLE

2 SIDE
1 SIGHT
1 SIGN
1 SIGNATURE
1 SIGNED

1 SIGAS
1 SIMPLE
1 SIMULATE
16 SIMULATED
2 SINCE

1 SINGULAR
35 SITUATION
1 SITUATIONS
8 SITUATION
3 SITUP

1 SKILL
75 SKILL
1 SKILLED
9 SKILLS
5 SKIN

1 SLICES
1 SLING
1 SLOWLY
1 SMA
1 SMALL

1 SNICKERBOCKETS
1 SNOUT
3 SD
1 SOAPY
2 SODIUM

135

15 SOLDIER
13 SOLDIER'S
19 SOLDIERS
3 SOLID
5 SOME

2 SCHEMATIC
1 SOMETHING
3 SOP
4 SOUND
2 SPECIAL

1 SPECIALIST
2 SPECIFIC
2 SPECIFICALLY
2 SPECIFIED
2 SPEED

1 SPLINT
1 SPLINTING
3 SPLINTS
1 SPLITS
1 SPRAYING

1 SP4
14 SGT
1 STACK
1 STAFF
1 STAND

4 STANDARD
68 STANDARDS
1 STANDARD
3 STATED
3 STATEMENT

2 STATIONARY
1 STATIONED
8 STATUS
1 STC
2 STEEL

1 STEP
1 STEP-BY-STEP
2 STEPS
3 STEPIL
1 STICKS

1 WILL
1 STOCK
1 STOCKED
3 STOP
7 STOPPAGE

2 STOPPED
17 STORAGE
2 STICK
1 STORED
3 STORING

2 STRAPS
1 STRENGTH
3 STRIKE
1 STRIKING
1 STRIPS

1 STUDIED
126 STUDY
1 STUDYING
3 SUBCOURSE
4 SUBCOURSES

9 SUBJECTS
2 SURPACHIMEGUN
1 SUBMIT
2 SUCCEED
1 SUCCESS

4 SUCH
2 SUGGESTIONS
2 SUITABLE
1 SUPERIORS
1 SUPERVISE

1 SUPERVISION
10 SUPERVISOR
3 SUPERVISORY
1 SUPPLMAN
1 SUPPLY

33 SUPPLIES
59 SUPPLY
2 SUPPLY--PART
11 SUPPLY-MANUAL
12 SUFFLYMAN

1 SUPPLYMEN
15 SUPPORT
1 SUPPORTED
SURE
SURROUNDINGS

1 SUSPECTED
7 SUSPENSE
5 SYMPTOMS
0 SYSTEM
1 SYSTEMS

137

1 SOLDIER

1 S4

1 T

1 TAAR

7 TAKE

1 TALK

1 TALLAY

1 TAP

1 TAPES

1 TARGET

8 TARGETS

82 TASK

57 TASKS

2 TAUGHT

1 TC

6 TDA

2 TEARGUT

1 TEARS

22 TEC

14 TECHNICAL

1 TELEPHONE

3 TELL

5 TELLS

2 TEMPORARY

1 TENTAGE

5 TERRAIN

203 TEST

2 TESTED

8 TESTS

2 TEATS

4 THAN

24 THAT

406 THE

7 THEM

2 THEN

12 THERE

48 THESE

2 THEY

1 THIGH

1 THUI

1 THIR

88 THIS

5 THOSE

4 THREE

20 THROUGH

138

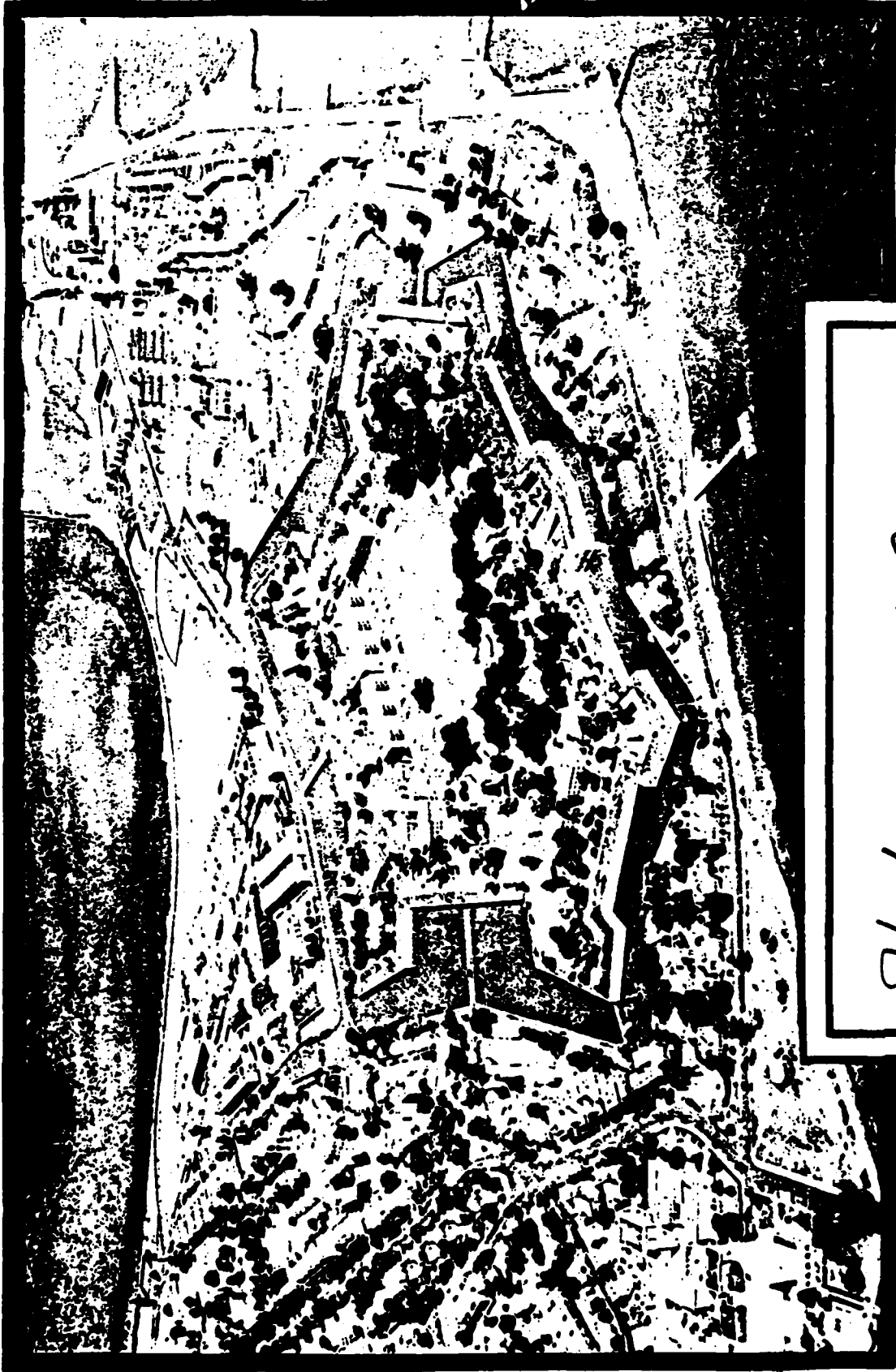
DATA CONTROL NUMBER

Job No / Proj No

**HEADQUARTERS
UNITED STATES ARMY TRAINING AND DOCTRINE COMMAND
FORT MONROE, VIRGINIA 23651**

JUN 25 1980

WCA
DLI



76Y SK11 2

139

Incl 5'

76Y
Skill 2

SEQUENTIAL DATA M .GER

PAGE AC 2 TYPE RECOFD BYTES

UTILITY-RECEIPT

UTILITY-CON

UTILITIES

UTILITIES

UTILITIES

UTILITIES

UTILITIES

UTILITIES

UTILITIES

UTILITIES

UTILITIES

UTILITIES

UTILITIES

UTILITIES

UTILITIES

UTILITIES

UTILITIES

UTILITIES

UTILITIES

UTILITIES

UTILITIES

UTILITIES

UTILITIES

UTILITIES

UTILITIES

UTILITIES

UTILITIES

UTILITIES

UTILITIES

UTILITIES

UTILITIES

UTILITIES

UTILITIES

UTILITIES

UTILITIES

UTILITIES

UTILITIES

UTILITIES

UTILITIES

UTILITIES

UTILITIES

UTILITIES

UTILITIES

UTILITIES

UTILITIES

UTILITIES

UTILITIES

UTILITIES

UTILITIES

UTILITIES

UTILITIES

UTILITIES

UTILITIES

TRN

TRN

TRN

TRN

TRN

TRN

TRN

TRN

TRN

TRN

TRN

TRN

TRN

UPDATED RECORDS 660

LRECL 32

BLKSIZE 3136

254

80

8000

TRANS REAC

LRECL

BLKSIZE

2517

32

3136

STER READ

LRECL

BLKSIZE

140

VMSOFT 111-AND-A-HLF COPYRIGHT WHITLOW COMPUTER TENS, INC. 1974 REL 1.0 DATE= '176 TIME=35.09.13

DATE= 01/05/81 025.00.00

TIME= 01/05/81 025.00.00

NO. 771 TURNING SOFT PERFORMED

PL 341 100 IN 660.000 660

REP 593 TYPE APPLIED 234

TCU521 END SYNC SFT OPTS 1 TPER0207, STEPS

000000000000 150000 200000 250000 300000 350000 400000 450000 500000 550000 600000 650000 700000 750000 800000 850000 900000 950000 1000000

PROGRAM PCS MICRO LIST BY PAGE TO 50

PROGRAM 1 TO 1
IF 2 GT MEM GOBACK

IF 600000 ENDJUN

IF SYLN = 1 MOVE 1 TO H125 MOVE SPACES TO 1,132

MOVE 1 TO 1,1
MOVE 2 TO 4,20

GOBACK

IF 1 N= H125 H2 MOVE SPACES TO 1,132 MOVE 1 TO 1,1

MOVE 2 TO 4,30
MOVE 3 TO H125

GOBACK

IF R74 = . MOVE 26 TO 34,7 GOBACK

IF R72 = . MOVE 26 TO 42,7 GOBACK

IF R70 = . MOVE 26 TO 50,7 GOBACK

IF R68 = . MOVE 26 TO 58,7 GOBACK

IF R66 = . MOVE 26 TO 66,7 GOBACK

IF R64 = . MOVE 26 TO 74,7 GOBACK

IF R62 = . MOVE 26 TO 82,7 GOBACK

IF R60 = . MOVE 26 TO 90,7 GOBACK

IF R58 = . MOVE 25 TO 98,7 GOBACK

IF R46 = . MOVE 26 TO 106,7 GOBACK

IF R34 = . MOVE 26 TO 114,7 GOBACK

IF R22 = . MOVE 26 TO 122,7 GOBACK

IF MOVE SPACES TO 1,132 MOVE 26 TO 26,7

142

0037 80176/8C0624 1508 EASY RETRIEVAL D DATA MANIPULATOR

0037 80176/8C0624 1508 EASY RETRIEVAL D DATA MANIPULATOR

STEP=PRINT

UNIT=1
UNIT=2
UNIT=3
UNIT=4
UNIT=5
UNIT=6
UNIT=7
UNIT=8
UNIT=9
UNIT=10
UNIT=11
UNIT=12
UNIT=13
UNIT=14
UNIT=15
UNIT=16
UNIT=17
UNIT=18
UNIT=19
UNIT=20
UNIT=21
UNIT=22
UNIT=23
UNIT=24
UNIT=25
UNIT=26
UNIT=27
UNIT=28
UNIT=29
UNIT=30
UNIT=31
UNIT=32
UNIT=33
UNIT=34
UNIT=35
UNIT=36
UNIT=37
UNIT=38
UNIT=39
UNIT=40
UNIT=41
UNIT=42
UNIT=43
UNIT=44
UNIT=45
UNIT=46
UNIT=47
UNIT=48
UNIT=49
UNIT=50
UNIT=51
UNIT=52
UNIT=53
UNIT=54
UNIT=55
UNIT=56
UNIT=57
UNIT=58
UNIT=59
UNIT=60
UNIT=61
UNIT=62
UNIT=63
UNIT=64
UNIT=65

SER=J07614
SER=

DSN=THE.FEADY2.MCST6Y
DSN=SYS80.76.T075959.RVC00.THERJ2D7.F0001490

UNIT	INPUT	640	SYSD2	OUTPUT	247	SYSD3	OUTPUT	0	SYSD4	OUTPUT	0
BLK	SIZE	LPCL	LPCL	BLKSIZE	BLKSIZE	LPCL	LPCL	BLKSIZE	LPCL	LPCL	BLKSIZE
1	3336	32	32	233	233	0	0	0	0	0	0

143

MC ORD LIST BY PAGE

	6.1	4.3	2.1	6.1	4.3	2.1	6.1	4.3	2.1	6.1	4.3	2.1	6.1	4.3	2.1	6.1	4.3	2.1	6.1	4.3	2.1	
MISSING	6.1																					
ACROSS	692.3																					
SLAUGHTER	692.2																					
SPECIALLY	3.1																					
SUBSTITUTE	4.2																					
VALID																						
ACTIVE																						
ACTIVITY	9.3																					
APP	12.1																					
APPENDIX	22.1																					
APPLICABLE	13.1																					
APPLY	11.1																					
ARM	692.1																					
ASSIGN	16.1																					
ASSIGNED	2.1																					
ASSISTANCE	15.1																					
ASSISTANCE	692.1																					
ASSISTANCE	692.2																					
ASSISTANCE	10.1																					
CERTIFICATION	3.1																					
CLEAR	18.1																					
COLOR	4.1																					
COMPANY	21.2																					
COMPLETE	11.1																					
COMPLETED	16.1																					
CONSOLIDATED	9.2																					
CONTROL	2.1																					
CONTROL--REPAIR	692.1																					
CORRECTING	1.1																					
COPY	2.3																					
COVER	692.2																					
CURRENT	1.1																					
DATE	5.1																					
DATE	9.1																					
DATE	692.1																					
DATE	2.1																					
DATE	19.8																					
DIVISIONS	20.1																					
DATE	10.1																					
EQUIPMENT	4.2																					
EQUIPMENT	17.7																					
ESTABLISH	4.1																					
FACILITY	15.2																					
FAILURE	3.1																					
FAILURE	6.1																					
FUNCTIONAL	20.1																					
FURNITURE	7.1																					
GARRISON	1.1																					
GRENADE	101.1																					
GUN	100.4																					

127

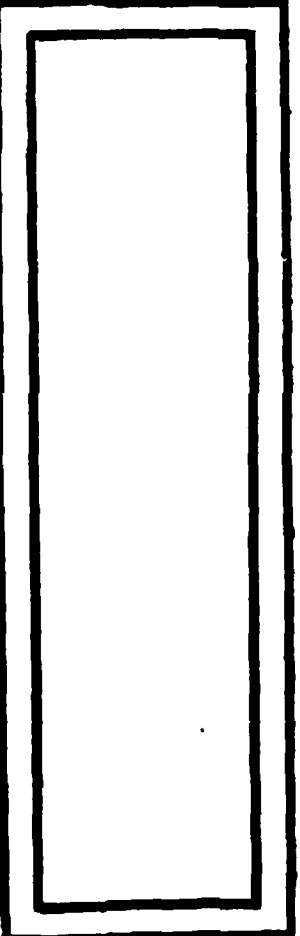
HEADQUARTERS

UNITED STATES ARMY TRAINING AND DOCTRINE COMMAND

FORT MONROE, VIRGINIA 23651

Report

Job No / Proj No



148

Incl 25

SKILL 2
764

WORDS FREQUENCY DISTRIBUTION 800 UNIQUE ITEMS 4,026 RECORDS

2	3250
1	MATERIAL
1	A
1	A-1
1	A-2
1	A-3
1	A-4
1	ABDCHEN
1	ACCESS
1	ACCESSORIES
1	ACCFDANCE
13	ACCFDING
2	ACCUHT
3	ACCOUNTING
1	ACTION
2	ACTIONS
1	ACTIVATED
1	ACTIVE
3	ACTIVITY
1	ACTUAL
1	ADD
4	ADJUSTMENT
1	ADJUSTMENTS
1	ADMINISTER
3	ADMITTED
1	ADOPTED/OTHER
1	AERIAL
1	AFFECT
3	AGA INST
12	ATO
2	AID--PART
1	ATR
29	ALL
1	ALLCLEAR
1	ALLCATE
1	ALLCTED
1	ALLCHANCES
1	ALLCHING
1	ALLCHS
1	ALPHABETICAL
1	ALREADY
1	ALSC
12	AMMUNITION
1	AMMUNITION
30	AN

149

165	AND
1	ANNEX
1	ANNCTATE
1	ANNCTATED
2	ANNUAL
1	ANCTHEP
1	ANY
1	APP
1	APPEARING
3	APPENDIX
7	APPLICABLE*
7	APPLY
4	APPCINTING
4	APPCPPRIATE
2	APPROVED
12	AR
33	ARE
17	AREA
5	AREAS
1	ARPIIS
5	ARMS
10	ARMY
1	ARO150
1	ARO178
16	AS
3	ASPECTS
1	ASSEMBLING
2	ASSIGN
6	ASSIGNED
1	ASSISTANCE
1	ASSOCIATION
5	AT
1	ATTACK
1	ATTEMPT
1	AUTHORITY
2	AUTHORITY--RECEIPT
2	AUTHORIZATION
1	AUTHORIZATION/LIST
1	AUTHORIZED
1	AUTOMATIC
2	AVAILABLE
2	AVCID
2	AZIMUTHS
26	B
1	B-1

150

2 BALANCE
3 BARE
5 BASIC
1 BATH
4 BATHING

6 BE
17 BEEN
2 BETWEEN
9 BIOLOGICAL
1 BITE

1 BITTEN
1 BLCITING
4 BODY
25 BOOK
1 BREATHING

1 BRIEF
1 BRICH
1 BRCHNG
2 BULLETS
1 BURN

14 BY
1 BOOK
13 C
3 CALIBER
6 CAMOUFLAGE

4 CAN
3 CANTEEN
9 CAPCS
1 CARRY
2 CASP

12 CASUALTY
1 CASUALTY'S
1 CATALOGS
2 CUR
2 CEREMONIES

1 CERTIFICATION
1 CHANGE
17 CHAP
1 CHAPTER
2 CHARGES

1 CHEEKS
9 CHEMICAL
1 CHEMICAL-BIOLOGICAL
1 CHIA
1 CHLORIDE

151

1 CIRCULARS
1 CLASSES
2 CLASSIFICATION
1 CLASSIFIED
1 CLEAR

1 CLEVER
9 CLOTHING
1 CLOTHING
2 CODE
1 CODES

7 CCLC
1 CCLDEST
2 COLLECTION
1 COLUMN
16 COMBAT

1 COMMON
2 COMMUNICATION
9 COMPANY
2 COMPANY
13 COMPLETE

1 COMPLETED
2 CONCEALMENT
2 CONCEALMENT--PART
30 CONCIIGN
36 CONDITIONS

1 CONDITION
7 CONDUCT
2 CONSOLIDATED
8 CONTAMINATED
1 CONTINUING

1 CONTINUOUSLY
3 CONTOUR
3 CONTRCL
1 CONTROL--REPAIR
1 CONTROLLING

4 CCCL
1 COORDINATE
2 COORDINATES
3 COPY
1 CORRECTING

1 CORRECTIONS
1 COURSE
2 COVER
2 CRAMPS
3 CRITICAL

2 CROSS
3 CRASSING
1 CRUSHED
1 CIA'S
2 CURRENT

5 CONDITION
1 CONITION
1 CONTROL
1 CORRESPONDENCE
8 D

1 D-1
30 DA
6 DAMAGED
1 DATE
7 DD

1 DECONTAMINANTS
3 DECONTAMINATE
5 DECONTAMINATING
8 DECONTAMINATION
1 DEDUCTION/DISCONTINUANCE

1 DEEP
11 DEFENSE
2 DELEGATION
1 DELIVERY
2 DEPARTMENT

1 DEPT
3 DESIGNATED
6 DESTROYED
24 DETERMINE
1 DIMENSIONS

10 DIRECT
5 DIRECTED
1 DIRECT SUPPORT
1 DISASSEMBLING
1 DISCOVERED

1 DISPOSITION
8 DISTANCE
2 DISTANCES
1 DIVISIONS
2

7 DOCUMENT
2 DOCUMENTS
2 DRILL
1 DRINK
1 DRY

1 DRYCLEANING

2 DS

2 DS?

1 DUE

1 DUE-IN

2 DURING

3 E

2 EACH

1 EARS

1 EDGE

1 EITHER

6 ELEVATION

1 ENLISTED

1 ENTRIES

1 ENVIRONMENTAL

12 ENVIRONMENTAL

1 ENVIRONMENTAL

1 ENCC51

1 ENO55

31 EQUIPMENT

1 ESTABLISH

1 EVALUATION

14 EVALUATION

1 EXCLUDING

1 EXHAUSTION

1 EXISTS

1 EXPENDABLE

2 EXPLCSIVES

2 EXPORT

1 EYE

1 F FACILITY

6 FAILURE

15 FANMING

1 FAST

1 FEATURE

6 FEATURES

2 FEET

1 FIAG

4 FIELD

9 FILE

4 FILLED

14 FIRST

1 FITNESS

2 FIVE

35	FM
4	FOLLOWING
2	FOLLOCHUP
2	FJOT
57	FORM
1	FGREHEAD
33	FORM
4	FRYS
1	FOUR
1	FRACTURES
1	FREQUENT
6	FRUP
2	FROST
1	FRICSTRITE
3	FROSTITTEN
1	FULL
1	FUNCTIONAL
1	FURNITURE
2	FURTHER
12	GARTISON
1	GARRISON
6	GENERAL
1	GENERIC
3	GET
1	GIVE
2	GIVEN
1	GRAPHIC
1	GRENADE
2	GRIC
4	GROUND
2	GS
1	GUIDED
4	GUN
1	HALF
6	HAND
2	HANGROCK
2	HANDS
17	HAVE
2	HAVING
4	HAZARDS
1	HEADER
7	HEAT
3	MER
3	HIS

2 HOT
 1 HYGIENE
 6 I
 2 ICE
 2 IDENTIFIED
 1 IDENTIFIABLE
 1 IDENTIFIED
 3 IDENTIFY
 5 IF
 5 II
 4 III
 2 IMMEDIATELY
 1 IMPERSE
 1 IMMERSON
 53 IN
 1 INACTIVE
 1 INCLUDING
 2 INDEX
 8 INDIVIDUAL
 7 INFANTRY
 1 INFCRSED
 1 INITIAL
 8 INJURIES
 5 INJURY
 1 INSPECT
 2 INSPECTION
 4 INSTALLATION
 1 INSTALLATIONS
 2 INTERVAL
 1 IMTC
 2 INTRODUCTION
 1 INVENTORIES
 12 INVENTORY
 1 INOCLB
 1 INO00?
 1 IMCC09
 1 IM0029
 14 IS
 1 ISSUED
 1 ISSUED
 1 ISC221
 1 ISO762
 2 IT
 9 ITEM
 10 ITEMS

16	JOB
2	JOINT
1	JUICELY
1	JUST
1	KEEP
1	KIT
1	KNOW
2	LAND
1	LAUNCHER
5	LAUNDRY
1	LAY
2	LEADERSHIP
2	LESS
6	LESSON
1	LESSONS
5	LEVEL
3	LIABILITY
1	LIFESAVING
2	LINE
10	LIST
4	LISTING
1	LISTS
1	INDIVIDUAL
2	LOAD
4	LOCATE
1	LCCATED
5	LOCATICM
1	LOOSEN
3	LCSS
6	LOST
2	LCT
1	LUSPICATION
2	MACHINE
3	MAINTAIN
1	MAINTAINED
1	MAINTAINING
16	MAINTENANCE
1	MAJCR
1	MAJFUNCTIONS
1	MAN
9	MANAGEMENT
1	MANUAJ
13	MANUAL
5	MANUALS
23	MAP

1 MAP-TERRAIN
1 MARKSMANSHIP

5 MASK
1 MATERIAL
8 MATERIALS

7 MATERIEL
1 MAY
4 MEASURE
35 MEASURES
2 MEASURING

1 MECHANICAL
1 MECHANIZED
8 MEDICAL
15 MEET
3 METERS

4 MILITARY
1 MINOR
3 MINUTES
1 MISSILE
1 MISSION

1 MIX
5 MIXED
1 MIXED
1 MIX
4 MONTHLY

2 MOS
1 MICE
1 MULTIPLE
32 MUST
2 MUTILATED

1 MOS
1 M13
1 M16A1
1 M17
1 M1911A1

1 M2
1 M203
2 M3
1 M47
1 M50

1 MATINAL
2 NAVIGATION
2 NHC
1 MCC
2 MCD

1 NEAR
3 NEAREST
16 NECESSARY
1 NEEDED
3 NEW

1 NEWLY
2 NEXT
16 NC
12 NO-GO
1 NONE

1 NONEXPENDABLE
1 NONPOTABLE
1 NONSENSITIVE
1 NCSE
5 NOT

3 NOTICE
1 NSN'S
4 NUCLEAR
7 PUMPER
1 NUMBERED

5 NUMBERS
5 NO
1 NO-GO
1 NO-GO
1 ON SERVE

3 OBTAIN
1 OCCUR
114 OF
4 OFFICER
2 OFFICERS

2 OLD
38 ON
1 ONCE
1 ONE
1 ONE-FOURTH

8 OPERATING
1 OPERATIONAL
2 OPERATIONS
2 OPERATOR
3 OPERATORS

1 OPPOSITE
1 OPTICAL
48 OR
1 ORDERED
3 ORDERS

1

1 ORGANIC
 9 ORGANIZATION
 1 ORGANIZATION/INSTALLATION
 12 ORGANIZATIONAL
 2 ORGANIZATION

1 ORIENT
 1 OTHER
 1 OUT
 1 OVER
 2 PACKAGE

6 PAGE
 4 PAGES
 1 PAIR
 1 PAMPHLETS
 1 PAPER

3 PARA
 2 PART
 4 PARTS
 1 PAST
 1 PAYROLL

1 PBC
 21 PERFORM
 39 PERFORMANCE
 4 PERFORMED
 2 PERFORMING

7 PERFORMANCE
 1 PERIOD
 1 PERSON
 4 PERSONAL
 4 PERSONNEL

1 PHOTOGRAPH
 8 PHYSICAL
 1 PIECE
 1 PISTOL
 3 PLACE

4 PLAN
 7 POINT
 2 POINTS
 5 POLICIES
 5 POSITION

2 POSITIVE
 5 POST
 1 POSTING
 1 PICTURE
 1 POURING

1	PREPARATION
15	PREPARE
1	PREPARING
2	PRESENT
1	PRIMARY
2	PRINCIPLES
1	PRINTED
2	PROCEDURE
6	PROCEDURES
2	PROCEDURES--PART
2	PROGRAM
1	PROCLAIMENT
1	PROPERTY
39	PROPERTY
1	PRACTICE
2	PROTECTION
5	PROTECTIVE
1	PTC
1	PUBLICATIONS
3	PUT
1	Q4022
1	Q40013
1	Q40121
1	Q40374
1	Q40375
1	Q40355
1	Q40563
1	Q40612
2	QUANTITIES
2	QUANTITY
1	QUARTERS
7	RADIOLOGICAL
3	RAGS
2	READINESS
5	READING
1	READING--BASIC
1	RECEIPT
4	RECEIPT/ANNEX
1	RECEIVE
2	RECEIVED
0	RECORD
1	RECORDS MANAGEMENT
5	RECORDS
11	REFERENCE
10	REFERENCES

11

1 REGARDLESS
4 REGISTER
2 REGISTRATION
1 REGULATIONS
1 RELATION

6 RELIEF
1 REMOVE
3 REPAIR
6 REPORT
3 REPORTABLE

1 REPORTING
10 REQUEST
6 REQUESTS
1 REQUIRE
2 REQUIRED

1 REQUIREMENTS
1 RESERVE
1 RESIDENT
1 RESOURCES
1 RESPONSIBILITY

2 RESPONSIBLE
1 RESTORING
1 RESTRICTED
1 RESULT
15 RESULT

1 RETURN
1 RETURNS
3 REVERSE
3 REVIEW
1 REVIEWING

1 RICC
6 RIFLE
1 RIFLE--LOADING
1 RIFLE--PREVENTING
5 ROAD

1 RCCP
2 RCSTEP
1 ROUTINE
3 S
2 SAFETY

1 SALE
5 SALT
2 SANITATION
1 SA
4 SCALE

3 SEC
 2 SECTION
 9 SECURITY
 1 SEEING
 4 SELECT

 1 SELECTED
 2 SELF
 1 SENSITIVE
 1 SEQUENCE
 11 SERGEANT

 4 SERIAL
 1 SERIALY
 1 SERIES
 1 SERVICE
 1 SEVERE

 1 SHADE
 1 SHADED
 5 SHIPMENT
 2 SHCMS
 1 SIDE

 1 SIGNATURE
 10 SIMULATED
 17 SITUATION
 1 SITUATIONS
 5 SITUATION

 4 SKILL
 1 SKIN
 1 SLURRY
 1 SMALL
 2 SNARKBITES

 2 SOAP
 1 SODIUM
 4 SOLDIER
 3 SOLDIER'S
 3 SOLDIERS

 1 SOLVENT
 1 SOLVENTS
 1 SUP
 2 SPECIAL
 1 SPLINTING

 1 STAND DS
 1 STANDACS
 29 STANDARDS
 1 STANDING
 1 STATE

1 STATED
2 STATEMENT

10 STATUS
1 STD
1 STEPS

2 STOCK
14 STCRGE
2 STRAIGHT
1 STRCKE
46 STUDY

1 STORAGE
1 STOFE
1 SURCOURSE
4 SUBJECTS
2 SUBMACHINE

1 SUBORDINATE
4 SURCKOINATES
1 SURSTITUTE
3 SUFFERING
2 SUITABLE

1 SUPERVISE
1 SUPERVISORY
6 SUPPLIES
33 SUPPLY
2 SUPPLY--PART

5 SUPPORT
2 SUPPORATING
2 SURVEY
1 SUSPECTED
1 SUSPENSE

1 SWAB
2 SYMROLS
2 SYMPTOMS
3 SYSTEM
1 SOP

1 T
2 TABLE
2 TARLETS
1 TACTICAL
1 TAMPS

39 TASK
1 TASKED
11 TASKS
3 TAUGHT
1 TUA

1 TEASPOON
7 TEC
6 TECHNICAL
7 TERRAIN
89 TEST

2 TESTS
8 THAT
1 THAM
125 THE
1 THEN

5 THERE
23 THESE
1 THEY
21 THIS
1 THOROUGHLY

2 THOSE
2 THREE
1 TIME
3 TITLE
4 TM

65 TO
1 TCE
1 TCELS
1 TOMELS
4 TRAINING

2 TRANSACTIONS
2 TRANSPORT
1 TRAVEL
1 TREAT
8 TREATMENT

1 TRENCH
7 TURN-IN
5 TWC
3 TYPE
2 TYPES

1 TOE
48 UNDER
25 UNIT
2 UNIT/ORGANIZATION
9 UNITS

1 UNLOADING
1 UNSCHEDULED
1 UMT JI
2 UPDATE
1 UPM JND

1 USE
1 USER
11 USING
2 V
1 VALID

3 VALLE
1 VEHICLES
2 VERIFY
2 VOUCHER
1 WALK

1 WARFARE
1 WAPP
9 WATER
1 WAY
2 WEAPON

12 WEAFONS
4 WEAATHER
1 WET
1 WHAT
18 WHEN

7 WHICH
1 WHILE
1 WHO
19 WILL
1 WIPING

12 WITH
7 WITHIN
1 WOMEN
1 WORK
7 MORNING

65 YOU
19 YOUR
1 YOURSELF
2 ZATIONAL
1 ZERC

DEF 0491 END SCRT PH
MER051 INSERT 800, DELETE 800
MER1371 CATA MIAS = 00
MER1241 TRK OVER-ALLOCC FACTOR= PRIM/USED=040
MER0941 RCD IN , OUT
MER1691 TPF'S APPLIED 1234
MER0521 END SYNC SORT OPT= M, TMR0107,DUMP

00050001000013000200025003000350040004500500055006000650070007500800085009000950100010501100

HEADER1 CUT=50,CON=,MORC FREQUENCY DISTRIBUTION

HEADER2 OUT=001,CON=,FREQUENCY/WORD

HEADER3 CUT=033,CON=,FREQUENCY/WORD

HEADER4 OUT=065,CON=,FREQUENCY/WORD

HEADER5 CUT=103,CON=,FREQUENCY/WORD

HEADER6 CUT=1,CON=

MOVE OF=1,CON=SPACE,LEN=132

MOVE IN=1,CUT=001,LEN=5

MOVE IN=6,CUT=0,LEN=25

REAC SYSUT1

MOVE IN=1,CUT=33,LEN=5

MOVE IN=4,CUT=40,LEN=25

REAC SYSUT1

MOVE IN=1,CUT=65,LEN=5

MOVE IN=6,CUT=72,LEN=25

REAC SYSUT1

MOVE IN=1,CUT=86,LEN=5

MOVE IN=6,CUT=103,LEN=25

WRITE SYSUT2

CIMCODE 78 E0JCODE 0 CONSTANTS 0 FULLWORDS 0 RETURN 0

108

00050010001500200025003000350040004500500055006000650070007500800085009000950100010501100

JOHNAME=TRIP J107 STEPAEWL131 STEP=

DCNAME=SYSPRINT UNIT=644
DCNAME=SYSUT1 UNIT=342
DCNAME=SYSUT2 UNIT=645
DCNAME=SYSIN UNIT=603

DSN=TIME.WORD.CMT

DSN=SYS80126.T06329.RV000.THERO1DT.R0000657

SER=U3330E

SEP=

SYST1 INPUT	800	SYST2 OUTPUT	200	SYST3 OUTPUT	0	SYST4 OUTPUT	0
LRECL	30	LRECL	133	LRECL	0	LRECL	0
BLKSIZE	642C	BLKSIZE	133	BLKSIZE	0	BLKSIZE	0

WORD FREQUENCY DISTRIBUTION

FREQUENCY/WORD

FREQUENCY/WORD

FREQUENCY/WORD

FREQUENCY/WORD	WORD	FREQUENCY/WORD	WORD	FREQUENCY/WORD	WORD
165	ANC	125	THE	124	OF
81	A	65	TO	45	YOU
53	IN	48	OR	48	UNDER
39	PERFORMANCE	39	PROPERTY	39	TASK
36	CONDITIONS	35	PH	35	MEASURES
33	FCRP	33	SUPPLY	32	MUST
30	AN	30	CONDITION	30	GA
29	STWARDS	26	B	25	BOOK
25	UNIT	24	TERMINE	23	THESE
21	T-15	19	WILL	19	YOUR
18	WHEN	17	AREA	17	BEEN
17	HAVE	17	SITUATION	16	AS
16	JOB	16	MAINTENANCE	16	NECESSARY
15	FAILURE	15	MEET	15	PREPARE
14	BY	14	EVALUATION	14	FIRST
14	STRAGE	13	ACCORDING	13	C
13	MAWUL	12	NO-GO	12	AID
12	AR	12	CASUALTY	12	ENVIRONMENTAL
12	INVENTORY	12	ORGANIZATIONAL	12	WEAPONS
11	DEFENSE	11	REFERENCE	11	SERGEANT
11	USING	10	ARMY	10	DIRECT
10	LIST	10	REQUEST	10	STIPULATED
9	RICLOGICAL	9	CARDS	9	CHEMICAL
9	COMPANY	9	FILE	9	ISSUE
9	MANAGEMENT	9	ORGANIZATION	9	SECURITY
9	LATER	9	CONTAMINATED	9	D
8	DISTANCE	8	INDIVIDUAL	8	INJURIES
8	RECICAL	8	OPERATING	8	PHYSICAL
8	THAT	8	TREATMENT	8	APPLICABLE
7	COLD	7	CONDUCT	7	DD
7	HEAT	7	INFANTRY	7	MATERIEL
7	PERFORMANCE	7	POINT	7	RADIOLOGICAL
7	TERPATN	7	TURN-IN	7	WHICH
6	ASSIGNED	6	BE	6	CAMOUFLAGE
6	DESTROYED	6	ELEVATION	6	FACILITY
6	FROM	6	GENERAL	6	HAND
6	LESSON	6	LOST	6	PAGE
6	RELIEF	6	REPORT	6	REQUESTS
6	SUPPLIES	6	TECHNICAL	5	AREAS
5	AT	5	BASIC	5	CONDITION
5	DIRECTED	5	IF	5	II
5	LAUNDRY	5	LEVEL	5	LOCATION
5	MASK	5	MILGAL	5	NOT
5	PGJITION	5	POST	5	PROTECTIVE
5	RECORDS	5	ROAD	5	SALT
5	SITUATION	5	SUPPORT	5	THERE
4	ADJUSTMENT	4	APPOINTING	4	APPROPRIATE
4	BODY	4	CAN	4	COOL
4	FILLED	4	FOLLOWING	4	FCAMS
4	GUN	4	HAZARDS	4	ILL
				4	INSTALLATION

FREQUENCY DISTRIBUTION
FREQUENCY/WORD

FREQUENCY/WORD	FREQUENCY/WORD	FREQUENCY/WORD	FREQUENCY/WORD	FREQUENCY/WORD	FREQUENCY/WORD
1	LOCATED	1	LOUSE	1	LUBRICATION
1	MAINTAINING	1	MAJOR	1	MALFUNCTIONS
1	MANUAL	1	MAP-TERRAIN	1	MARKSMANSHIP
1	MAY	1	MECHANICAL	1	MECHANIZED
1	MISSILE	1	MISSION	1	MIX
1	MN	1	MTOE	1	MULTIPLE
1	M13	1	M6A1	1	M17
1	M2	1	M203	1	M47
1	NATIONAL	1	NCC	1	NEAR
1	NEWLY	1	NONE	1	NONDEPENDABLE
1	NONSENSITIVE	1	NOSE	1	NSN'S
1	NO-GO	1	NO-GO	1	OBSERVE
1	ONCE	1	ONE	1	ONE-FOURTH
1	OFFSITE	1	OPTICAL	1	ORDERED
1	ORGANIZATION/INSTALLATION	1	ORIENT	1	OFFER
1	OVER	1	PAIN	1	PAPPHLETS
1	PAST	1	PAYROLL	1	PDD
1	PERSON	1	PHOTOGRAPH	1	PIECE
1	POSTING	1	POTABLE	1	POURING
1	PREPARING	1	PRIMARY	1	PRINTED
1	PROPERTY	1	PROTECT	1	PTC
1	Q4012	1	Q4013	1	Q40121
1	Q40375	1	Q40399	1	Q40422
1	QUARTERS	1	READING-BASIC	1	RECEIPT
1	RECORDS/MANAGEMENT	1	REGARDLESS	1	REGULATIONS
1	REMOVE	1	REPORTING	1	REQUIRE
1	RESERVE	1	RESIDENT	1	RESOURCES
1	RESTORING	1	RESTRICTED	1	RESULT
1	RETURNS	1	REVIEWING	1	RICC
1	RIFLE--PREVENTING	1	ROOM	1	ROUTINE
1	SB	1	SEEING	1	SELECTED
1	SEQUENCE	1	SERIALLY	1	SERIES
1	SEVERE	1	SHADE	1	SHADED
1	SIGNATURE	1	SITUATIONS	1	SKIN
1	SMALL	1	SCOUTING	1	SOLVENT
1	SCP	1	SPLINTING	1	STAND DS
1	STANDING	1	STATE	1	STATED
1	STEPS	1	STROKE	1	STORAGE
1	SUBCOURSES	1	SUBORDINATE	1	SUBSTITUTE
1	SUPERVISORY	1	SUSPECTED	1	SUSPENSE
1	SCP	1	T	1	TACTICAL
1	TASKED	1	TDA	1	TERRAIN
1	THEY	1	THEY	1	THROUGHLY
1	TOE	1	TOLLS	1	TOWELS
1	TREAT	1	TRENCH	1	TOE
1	UNCHEDULED	1	UNTIL	1	UPWARD
1	USEP	1	VALID	1	VEHICLES
1	WARFARE	1	WARM	1	WAY
1	WHAT	1	WHILE	1	WFC
1	WOMEN	1	WORK	1	YOURSELF
1		1		1	ZERC

175

APPENDIX 8

ENGLISH LANGUAGE STRUCTURES AND LEXICON

The following list is included as an addition to the structural and lexical list. These structures and lexical items are very basic.

(See Section II for discussion.)

LIST OF LEXICAL AND STRUCTURAL ITEMS FOR ENGLISH LANGUAGE STRUCTURES

Sentences:

- A. Declarative statement
- B. Interrogative question
 - 1. wh- questions
 - 2. tag questions
 - 3. yes/no questions
- C. Imperative command, polite request
- D. Exclamatory exclamation

Sentence Complexity:

- A. Simple one full subject and predicate
- B. Compound two or more independent clauses joined by:
 - 1. punctuation
 - 2. punctuation and conjunctive adverb
 - 3. coordinate conjunction
- C. Complex one or more dependent clauses and an independent clause
- D. Compound-Complex two or more independent clauses and one or more dependent clauses

Verbs:

- A. Concord subject-verb agreement
- B. Transitive takes an object
- C. Intransitive doesn't take an object
- D. Copula to be
- E. Linking connectors
- F. Auxiliaries of tense will, do, did
- G. Auxiliaries of modality should, ought to, must to, have to, have got to, able to, can, may, might, could, would
- H. Tense present, past
- I. Aspect perfect, progressive

Verbal Forms:

- A. Present Participle active voice
- B. Past Participle passive voice

Voice:

- A. Active subject does action
- B. Passive subject does not do action
 - 1. agent expressed
 - 2. agent not expressed

Prepositions:

A. Simple

- | | |
|----------------------------------|------------|
| 1. place | on, in |
| 2. time | in, at, on |
| 3. direction/motion | to |
| 4. manner/agent/
instrument | by, with |
| 5. measurement/
number amount | of |

B. Compound:

according to, because of, by means

Vocabulary:

words from 1100 through 2400 -
Elementary and Intermediate Phase of General
English materials

Special Expressions/Idioms

"knock it off" "can it, buddy"

Verb Combinations

two word verbs