

AD-A122 316

HIGH-POWER MICROWAVE SOURCE REQUIREMENTS FOR A  
RELATIVISTIC ELECTRON ACCELERATOR(U) HARRY DIAMOND LABS  
ADELPHI MD H E BRANDT OCT 82 HDL-SR-82-7

1/1

UNCLASSIFIED

F/G 20/7

NL

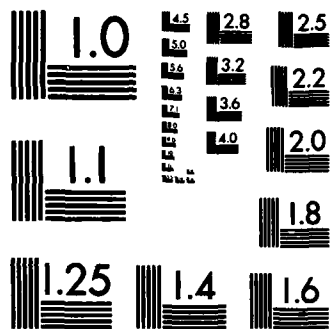
|  |  |  |  |  |  |  |  |  |  |  |  |  |  |
|--|--|--|--|--|--|--|--|--|--|--|--|--|--|
|  |  |  |  |  |  |  |  |  |  |  |  |  |  |
|  |  |  |  |  |  |  |  |  |  |  |  |  |  |
|  |  |  |  |  |  |  |  |  |  |  |  |  |  |

END

FORMED

1

DTG



MICROCOPY RESOLUTION TEST CHART  
NATIONAL BUREAU OF STANDARDS-1963-A

12

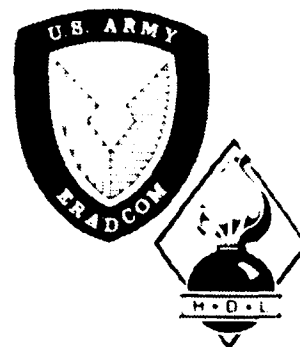
HDL-SR-82-7

October 1982

# High-Power Microwave Source Requirements for a Relativistic Electron Accelerator

by Howard E. Brandt

AD A 122 311



U.S. Army Electronics Research  
and Development Command  
Harry Diamond Laboratories

Adelphi, MD 20783

Approved for public release; distribution unlimited.

DEC 13 1982

82

12

A

AD A 122 311

**The findings in this report are not to be construed as an official Department of the Army position unless so designated by other authorized documents.**

**Citation of manufacturers' or trade names does not constitute an official indorsement or approval of the use thereof.**

**Destroy this report when it is no longer needed. Do not return it to the originator.**

HDL-SR-82-7 replaces HDL-SR-81-6, which was the number originally assigned in the preliminary version, HDL-PRL-81-13, in August 1981.

UNCLASSIFIED

SECURITY CLASSIFICATION OF THIS PAGE (When Data Entered)

| REPORT DOCUMENTATION PAGE  |                                  | READ INSTRUCTIONS<br>BEFORE COMPLETING FORM  |
|--|----------------------------------|--|
| 1. REPORT NUMBER<br>HDL-SR-82-7  | 2. GOVT ACCESSION NO.<br>AD-A122 | 3. RECIPIENT'S CATALOG NUMBER<br>316   |
| 4. TITLE (and Subtitle)<br>High-Power Microwave Source Requirements<br>for a Relativistic Electron Accelerator   |                                  | 5. TYPE OF REPORT & PERIOD COVERED<br>Special Report                                     |
|  |                                  | 6. PERFORMING ORG. REPORT NUMBER   |
| 7. AUTHOR(s)<br>Howard E. Brandt   |                                  | 8. CONTRACT OR GRANT NUMBER(s)   |
| 9. PERFORMING ORGANIZATION NAME AND ADDRESS<br>Harry Diamond Laboratories<br>2800 Powder Mill Road<br>Adelphi, MD 20783  |                                  | 10. PROGRAM ELEMENT, PROJECT, TASK<br>AREA & WORK UNIT NUMBERS<br>Program Ele: 6.26.18.A |
| 11. CONTROLLING OFFICE NAME AND ADDRESS<br>Ballistic Research Laboratory<br>Aberdeen Proving Ground, MD 21005  |                                  | 12. REPORT DATE<br>October 1982  |
|  |                                  | 13. NUMBER OF PAGES<br>23  |
| 14. MONITORING AGENCY NAME & ADDRESS (if different from Controlling Office)  |                                  | 15. SECURITY CLASS. (of this report)<br><br>UNCLASSIFIED                                 |
|  |                                  | 15a. DECLASSIFICATION/DOWNGRADING<br>SCHEDULE  |
| 16. DISTRIBUTION STATEMENT (of this Report)<br><br>Approved for public release; distribution unlimited.  |                                  |  |
| 17. DISTRIBUTION STATEMENT (of the abstract entered in Block 20, if different from Report)   |                                  |  |
| 18. SUPPLEMENTARY NOTES<br>HDL Project: 253123<br>DRCMS Code: 36KA5.0.00204<br>DA Project: 8139J2001RD2  |                                  |  |
| 19. KEY WORDS (Continue on reverse side if necessary and identify by block number)<br>High-power microwaves                      Relativistic electron beams<br>Accelerators                                      Particle beams   |                                  |  |
| 20. ABSTRACT (Continue on reverse side if necessary and identify by block number)<br>An estimate is made of the high-power microwave source intensity required to drive a relativistic electron accelerator of the type proposed some time ago by A. A. Kolomenskii and A. N. Lebedev. In this acceleration method, an external static magnetic guide field is chosen such that the particles are steered in such a way that the electric field of the microwave source performs positive work on them on the average. This calculation is intended only to provide a point of reference for this and other. |                                  |  |

DD FORM 1 JAN 73 1473 EDITION OF 1 NOV 65 IS OBSOLETE

UNCLASSIFIED

1 SECURITY CLASSIFICATION OF THIS PAGE (When Data Entered)

UNCLASSIFIED

SECURITY CLASSIFICATION OF THIS PAGE(When Data Entered)

*cont* → 20. ABSTRACT (Cont'd)

types of high-power microwave driven electron accelerators. Although the required intensity for the above approach exceeds present capabilities, intensive research in the development of new high-power microwave sources may change this. ↖

UNCLASSIFIED

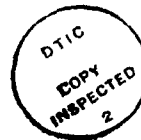
2 SECURITY CLASSIFICATION OF THIS PAGE(When Data Entered)

CONTENTS

|  | <u>Page</u> |
|--|-------------|
| 1. INTRODUCTION .....                              | 5           |
| 2. ESTIMATE OF MICROWAVE SOURCE REQUIREMENTS ..... | 6           |
| 3. CONCLUSIONS .....                               | 15          |
| LITERATURE CITED .....                             | 17          |
| DISTRIBUTION .....                                 | 21          |

FIGURES

1. Required microwave source intensity as function of final electron energy and accelerator length ..... 13
2. Required microwave source intensity as function of final electron energy and accelerator length for lower energies ..... 14



|                    |                                     |
|--------------------|-------------------------------------|
| Accession For      |                                     |
| NTIS GRA&I         | <input checked="" type="checkbox"/> |
| DTIC TAB           | <input type="checkbox"/>            |
| Unannounced        | <input type="checkbox"/>            |
| Justification      |                                     |
|                    |                                     |
| Distribution/      |                                     |
| Availability Codes |                                     |
| Dist               | Avail and/or<br>Special             |
| A                  |                                     |

## 1. INTRODUCTION

Some time ago, Kolomenskii and Lebedev proposed a simple method of accelerating charged particles to high energy with an electromagnetic wave together with an orbit-synchronizing magnetic field.<sup>1\*</sup> The spatial dependence of the external static magnetic guide field is chosen to effectively steer the particles in such a way that the electric field of the wave performs positive work, on the average, on the particles. Already at the time that this method was proposed, the appreciable increases attained in the power of microwave sources that might be used for such an accelerator were stressed.

More recently, several other methods have been proposed for accelerating electrons by using the electromagnetic energy of a radiation field together with a periodic static magnetic guide field.<sup>2-5</sup> Other approaches are also of current interest, involving the interaction between an intense electromagnetic wave packet and the electrons of an underdense plasma.<sup>5-9</sup> Also related is the method of radiative collective acceleration proposed long ago by Veksler.<sup>10</sup>

Although most of these schemes have emphasized conventional laser sources, Sprangle has recently considered a free electron laser source operating at submillimeter frequencies.<sup>4</sup> Recent advances in the development of high-power microwave sources<sup>11-31</sup> make it not unreasonable that sources of sufficient intensity to drive an electron accelerator can be developed.

Within the limited means of the present work, a simple estimate is here made of the required microwave power requirements to drive a relativistic electron accelerator of the type originally proposed by Kolomenskii and Lebedev.<sup>1</sup> The analysis presented here follows theirs closely with added mathematical detail and graphical presentation of the results.

In section 2, an estimate is made of the required high-power microwave source intensity for such an electron accelerator in the relativistic regime, in terms of the final electron energy and the accelerator length. These calculations assume a set of constraints on the microwave frequency, the electron energy, and the perturbed electron velocity that facilitate mathematically convenient approximations. In section 3, the results and the conclusions are summarized. The limitations of the present analysis are to be emphasized. It is likely that more detailed examination of the problem including collective effects and less limited mathematical constraints will generate an even more optimistic picture.

---

\*See Literature Cited section for all references.

## 2. ESTIMATE OF MICROWAVE SOURCE REQUIREMENTS

In the accelerator approach proposed by Kolomenskii and Lebedev,<sup>1</sup> an electron beam is considered to traverse the accelerator region axially along the positive z-axis of a right-handed rectangular cartesian coordinate system. A microwave accelerating wave linearly polarized in the y-direction also moves in the positive z-direction. The electromagnetic wave is of the form

$$\vec{B} = -\hat{x}E_m \sin(\omega t - kz) \quad , \quad (1)$$

$$\vec{E} = \hat{y}E_m \sin(\omega t - kz) \quad . \quad (2)$$

A magnetic guide field is assumed of the form

$$\vec{B}_g = \hat{x}B_0(y, z) \quad (3)$$

such that the perturbed particle trajectories are guided in such a way that the microwaves perform, on the average, positive work on the particles, thereby accelerating them. Collective effects are ignored.

The rate of work,  $\dot{\epsilon}$ , on a beam electron is given by

$$\dot{\epsilon} = ec\vec{\beta} \cdot \vec{E} = ec\beta_y |\vec{E}| \quad , \quad (4)$$

where  $-e$ ,  $\vec{\beta}$ , and  $\epsilon$  are the charge, the velocity (in units of the speed of light), and the energy of the electron. In order that  $\dot{\epsilon}$  be on the average positive, Kolomenskii and Lebedev assumed a magnetic guide field such that the component of particle velocity in the y-direction is in phase with the electric field of the wave, namely,

$$\beta_x = 0 \quad , \quad (5)$$

$$\beta_y = \beta_{\perp}(\gamma) \sin(\omega t - kz) \quad . \quad (6)$$

Here  $\beta_{\perp}(\gamma)$  is some positive and slowly varying function of  $z$ , or equivalently a function of the  $\gamma$  of the beam, where

$$\gamma = (1 - \beta^2)^{-1/2} \quad . \quad (7)$$

The electrons are thus assumed to be confined to the y-z plane. To see that this results in positive work on the average, one first substitutes equations (2) and (6) into equation (4). Thus

$$\dot{\epsilon} = ecE_m \beta_{\perp}(\gamma) \sin^2(\omega t - kz) \quad (8)$$

and taking the time average, then

$$\langle \dot{\epsilon} \rangle = \frac{1}{2} ecE_m \beta_{\perp} (\gamma) > 0 , \quad (9)$$

which is positive since all quantities  $e$ ,  $c$ ,  $E_m$ , and  $\beta_{\perp}$  are positive numbers.

It is useful to define the phase,  $\phi$ , appearing in equations (1), (2), and (6), namely,

$$\phi \equiv \omega t - kz . \quad (10)$$

Substituting

$$z = \int \dot{z} dt = \int \beta_z c dt \quad (11)$$

into equation (10), then

$$\phi = \omega t - kc \int \beta_z dt . \quad (12)$$

Equivalently, equation (12) can be rewritten as

$$\phi = \int (\omega - kc\beta_z) dt . \quad (13)$$

Kolomenskii and Lebedev assumed that the transverse velocity of the beam electrons is much less than the longitudinal; hence in equation (7),

$$\beta_{\perp} \ll \beta_z . \quad (14)$$

It then follows by using equations (5) and (14) that

$$\beta = (\beta_x^2 + \beta_y^2 + \beta_z^2)^{1/2} \approx \beta_z \quad (15)$$

and therefore, for an electron trajectory, one has that

$$dt = \frac{dz}{v_z} = \frac{dz}{\beta_z c} = \frac{dz}{\beta c} . \quad (16)$$

Also, for the microwave field, the free space dispersion relation obtains; hence

$$k = \frac{\omega}{c} . \quad (17)$$

Substituting equations (16) and (17) into equation (13), then to first order in  $\beta_{\perp}/\beta_z$ ,

$$\phi = k \int \frac{1 - \beta_z}{\beta} dz . \quad (18)$$

Substituting equations (10) and (18) into equation (6), then

$$\beta_y = \beta_{\perp}(\gamma) \sin \left( k \int \frac{1 - \beta_z}{\beta} dz \right) . \quad (19)$$

Next by noting that the energy of an electron of rest mass,  $m$ , is given by

$$\varepsilon = \gamma mc^2 \quad (20)$$

and by using equation (10), equation (8) becomes

$$\dot{\gamma} = \frac{eE_m}{mc} \beta_{\perp} \sin^2 \phi . \quad (21)$$

Also using equation (10), one has

$$\dot{\gamma} = \frac{d\gamma}{dt} = \frac{d\gamma}{d\phi} \frac{d\phi}{dt} = \frac{d\gamma}{d\phi} (\omega - kz) \quad (22)$$

or, using equation (17), one has then

$$\dot{\gamma} = \frac{d\gamma}{d\phi} kc(1 - \beta_z) . \quad (23)$$

Substituting equation (23) into equation (21) then gives

$$\frac{d\gamma}{d\phi} = \frac{eE_m \beta_{\perp} \sin^2 \phi}{mc^2 k (1 - \beta_z)} . \quad (24)$$

Furthermore, by using equations (5), (7), and (15), then

$$\beta_z = (\beta^2 - \beta_y^2)^{1/2} = (1 - \gamma^{-2} - \beta_y^2)^{1/2} \quad (25)$$

or, by using equations (6) and (10), then

$$\beta_z = (1 - \gamma^{-2} - \beta_{\perp}^2 \sin^2 \phi)^{1/2} . \quad (26)$$

Substituting equation (26) into equation (24) then gives

$$\frac{d\gamma}{d\phi} = \frac{G \beta_{\perp} \sin^2 \phi}{1 - (1 - \gamma^{-2} - \beta_{\perp}^2 \sin^2 \phi)^{1/2}} , \quad (27)$$

where one defines

$$G = \frac{eE_m}{mc^2 k} . \quad (28)$$

One also has, using equation (10), that

$$\frac{d\phi}{dz} = \frac{d}{dz} (\omega t - kz) = k \left( c \frac{dt}{dz} - 1 \right) = k \left( \frac{1}{\beta_z} - 1 \right) . \quad (29)$$

Then by substituting equation (26) into equation (29),

$$\frac{d\phi}{dz} = k \left[ (1 - \gamma^{-2} - \beta_{\perp}^2 \sin^2 \phi)^{-1/2} - 1 \right] \quad (30)$$

or, by taking the inverse, then

$$\frac{dz}{d\phi} = k^{-1} [(1 - \gamma^{-2} - \beta_{\perp}^2 \sin^2 \phi)^{-1/2} - 1]^{-1} \quad (31)$$

From equations (28) and (30), it follows that

$$\frac{d\epsilon}{dz} = \frac{1}{G} \left( \frac{eE_m}{mc^2} \right) [(1 - \gamma^{-2} - \beta_{\perp}^2 \sin^2 \phi)^{-1/2} - 1] \quad (32)$$

and the phase is seen to be rapidly varying, provided that

$$G \ll 1 \quad (33)$$

Since

$$k = \frac{2\pi}{\lambda} \quad (34)$$

where  $\lambda$  is the wavelength of the microwave field, then using equations (28) and (34), one sees that equation (33) is equivalent to

$$E_m \lambda \ll \frac{2\pi mc^2}{e} \quad (35)$$

which is the case for a sufficiently short wavelength and not too strong a microwave field.

Also by substituting equation (20) into equation (27), then

$$\frac{d\epsilon}{d\phi} = G \left[ \frac{mc^2 \beta_{\perp} \sin^2 \phi}{1 - (1 - \gamma^{-2} - \beta_{\perp}^2 \sin^2 \phi)^{1/2}} \right] \quad (36)$$

and it follows that when equations (33) and (35) are satisfied, then the particle energy is a slowly varying function of phase. In other words, the particle energy changes very little over distances of the order of one wavelength. Kolomenskii and Lebedev assumed equation (33) or equivalent equation (35) to be satisfied and therefore were able to find approximate solutions to equations (27) and (30) by averaging over the rapidly varying phase.

Furthermore, they addressed the case of a very relativistic beam, namely, one for which

$$\gamma^{-1} \ll 1 \quad (37)$$

Also from equation (14), it follows that the transverse velocity is nonrelativistic, namely,

$$\beta_{\perp} \ll 1 \quad (38)$$

Next by performing a Taylor series expansion in  $\beta_{\perp}$  and  $\gamma^{-1}$  of the radical in equation (31), then to lowest order

$$\frac{dz}{d\phi} = \frac{2\gamma^2}{k(1 + \gamma^2\beta_{\perp}^2 \sin^2 \phi)} \quad (39)$$

If the wavelength of the microwave source is sufficiently small so that equation (35) is satisfied, then one takes the average over the phase in equation (39), obtaining

$$\left\langle \frac{dz}{d\phi} \right\rangle = \frac{2\gamma^2}{k} (1 + \gamma^2\beta_{\perp}^2)^{-1/2} \quad (40)$$

Since the efficiency of the beam increases with increasing  $\beta_{\perp}$  (within limits, of course), one assumes that

$$\gamma^2\beta_{\perp}^2 \gg 1 \quad (41)$$

in which case equation (40) becomes approximately

$$\left\langle \frac{dz}{d\phi} \right\rangle = \frac{2\gamma}{k\beta_{\perp}} \quad (42)$$

Also by expanding equation (27) in  $\gamma^{-1}$  and  $\beta_{\perp}$ , then

$$\frac{d\gamma}{d\phi} = \frac{2G\beta_{\perp}\gamma^2 \sin^2 \phi}{1 + \beta_{\perp}^2\gamma^2 \sin^2 \phi} \quad (43)$$

Next by taking the average of equation (43) over the phase, then

$$\left\langle \frac{d\gamma}{d\phi} \right\rangle = \frac{2G\beta_{\perp}\gamma^2}{1 + \beta_{\perp}^2\gamma^2 + (1 + \beta_{\perp}^2\gamma^2)^{1/2}} \quad (44)$$

Furthermore, using equation (41) in equation (44), one has approximately

$$\left\langle \frac{d\gamma}{d\phi} \right\rangle = \frac{2G}{\beta_{\perp}} \quad (45)$$

To proceed, one has that

$$\left\langle \frac{dz}{d\phi} \right\rangle = \left\langle \frac{dz}{d\gamma} \frac{d\gamma}{d\phi} \right\rangle \quad (46)$$

Kolomenskii and Lebedev assumed that

$$\left\langle \frac{dz}{d\gamma} \frac{d\gamma}{d\phi} \right\rangle = \left\langle \frac{dz}{d\gamma} \right\rangle \left\langle \frac{d\gamma}{d\phi} \right\rangle \quad (47)$$

to the needed order. By substituting equation (47) into equation (46), it then follows that

$$\left\langle \frac{dz}{d\gamma} \right\rangle = \left\langle \frac{dz}{d\phi} \right\rangle \left\langle \frac{d\gamma}{d\phi} \right\rangle^{-1} \quad (48)$$

Next by substituting equations (42) and (45) into equation (48), then

$$\left\langle \frac{dz}{d\gamma} \right\rangle = \frac{\gamma}{kG} . \quad (49)$$

The length,  $Z$ , of the accelerator region is approximately given by

$$Z = \int_{z_i}^{z_f} dz = \int_{\gamma_i}^{\gamma_f} d\gamma \left\langle \frac{dz}{d\gamma} \right\rangle , \quad (50)$$

where  $\gamma_i$  and  $\gamma_f$  are the initial and final  $\gamma$ 's of the beam. Substituting equation (49) into equation (50) then gives

$$GkZ = \int_{\gamma_i}^{\gamma_f} d\gamma \gamma \quad (51)$$

or

$$GkZ = \frac{1}{2}(\gamma_f^2 - \gamma_i^2) . \quad (52)$$

Next, combining equations (28) and (52), one obtains

$$E_m = \frac{mc^2}{2eZ} (\gamma_f^2 - \gamma_i^2) . \quad (53)$$

By writing  $\gamma_i$  and  $\gamma_f$  in terms of the initial and final electron total energies,  $\epsilon_i$  and  $\epsilon_f$ , then

$$\gamma_f = \frac{\epsilon_f}{mc^2} \quad (54)$$

and

$$\gamma_i = \frac{\epsilon_i}{mc^2} . \quad (55)$$

By substituting equations (54) and (55) into equation (53), then

$$E_m = \frac{1}{2eZ} \frac{\epsilon_f^2}{mc^2} \left[ 1 - \left( \frac{\epsilon_i}{\epsilon_f} \right)^2 \right] . \quad (56)$$

Finally by assuming that the final electron energy is much greater than the initial, namely,

$$\epsilon_f \gg \epsilon_i , \quad (57)$$

then equation (56) becomes

$$E_m = \frac{1}{2emc^2} \frac{\epsilon_f^2}{Z} . \quad (58)$$

Equation (58) expresses the amplitude,  $E_m$ , of the microwave field in terms of the energy,  $\epsilon_f$ , to which the electrons are accelerated and the length,  $Z$ , of the accelerator. It is well at this point to summarize the domain of validity of this equation. From equations (14), (41), and (35) follows the following set of conditions in addition to equation (57):

$$\gamma^{-1} \ll \beta_{\perp} \ll 1, \quad (59)$$

$$\lambda \ll 2\pi \frac{mc^2}{eE_m}. \quad (60)$$

Equation (59) is the condition that the beam be relativistic with significant although moderate transverse velocity. Equation (60) is the condition that the high-power microwave source be limited to lower wavelengths. It must be stressed, however, that these constraints on transverse particle velocity and microwave wavelength are ones of mathematical convenience only in that they have merely facilitated the approximations. The regimes of higher  $\beta_{\perp}$  or longer wavelength or both are beyond the means of the present limited effort; however, they are certainly of physical interest. Addressing the mathematical and physical constraints on the magnetic guide field also is beyond the scope of this work.

The intensity of the microwave radiation field is given by the Poynting flux for a plane wave, namely,

$$S = \epsilon_0 \langle E^2 \rangle c. \quad (61)$$

By substituting equation (2) into equation (61) and averaging over phase, then

$$S = \frac{1}{2} \epsilon_0 c E_m^2. \quad (62)$$

Finally substituting equation (58) into equation (62), one obtains for the required microwave source intensity

$$S = \frac{\epsilon_0}{8e^2 m^2 c^3} \frac{\epsilon_f^4}{Z^2}. \quad (63)$$

If the final electron energy is expressed in mega-electron volts and the accelerator length is in meters, then equation (63) may be written as follows for electrons:

$$S = 1.26 \times 10^{-4} \frac{\epsilon_f^4}{Z^2}. \quad (64)$$

The intensity,  $S$ , is here expressed in gigawatts per square centimeter.

In figures 1 and 2, equation (64) has been used to obtain plots of the required microwave source intensity in gigawatts per square centimeter as a function of the final electron energy in mega-electron volts for various values of the accelerator length in meters. Figure 1 addresses the high energy range from 100 to 500 MeV. For the corresponding range of intensities, the wavelength is restricted to near millimeter or less in accordance with

$$\lambda \ll \frac{\pi mc^2}{e} \left( \frac{2\epsilon_0 c}{s} \right)^{1/2}, \quad (65)$$

which follows from equations (60) and (62). Of course, the intensity requirements of figure 1 ranging from 1 GW/cm<sup>2</sup> to 1 TW/cm<sup>2</sup> in near millimeter exceed present day capabilities. However, it is possible that extensive research efforts will lead to new high-power microwave sources at such levels of intensity. In figure 2 appears a similar plot for the 1- to 100-MeV range of final electron energy. In this plot, the approximations made limit the wavelength to near centimeter or less according to equation (65). The possibility of several consecutive stages of acceleration should be explored.

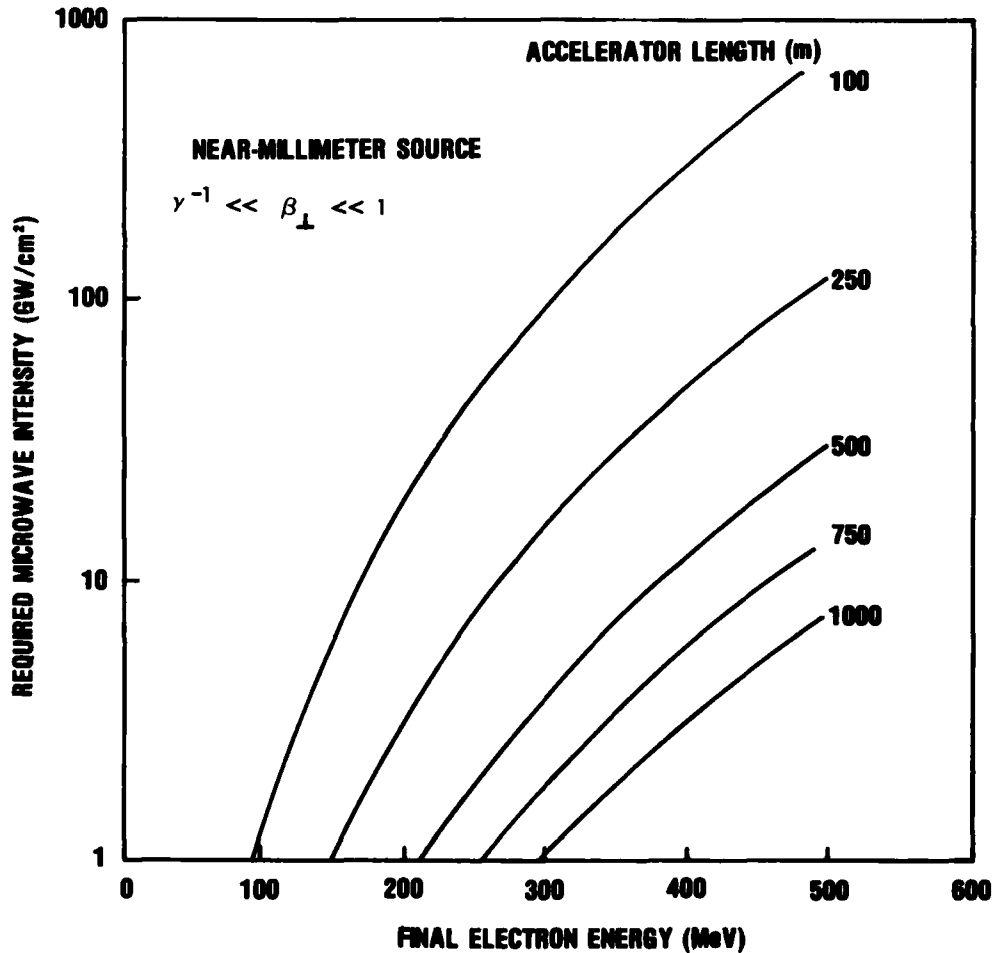


Figure 1. Required microwave source intensity as function of final electron energy and accelerator length.

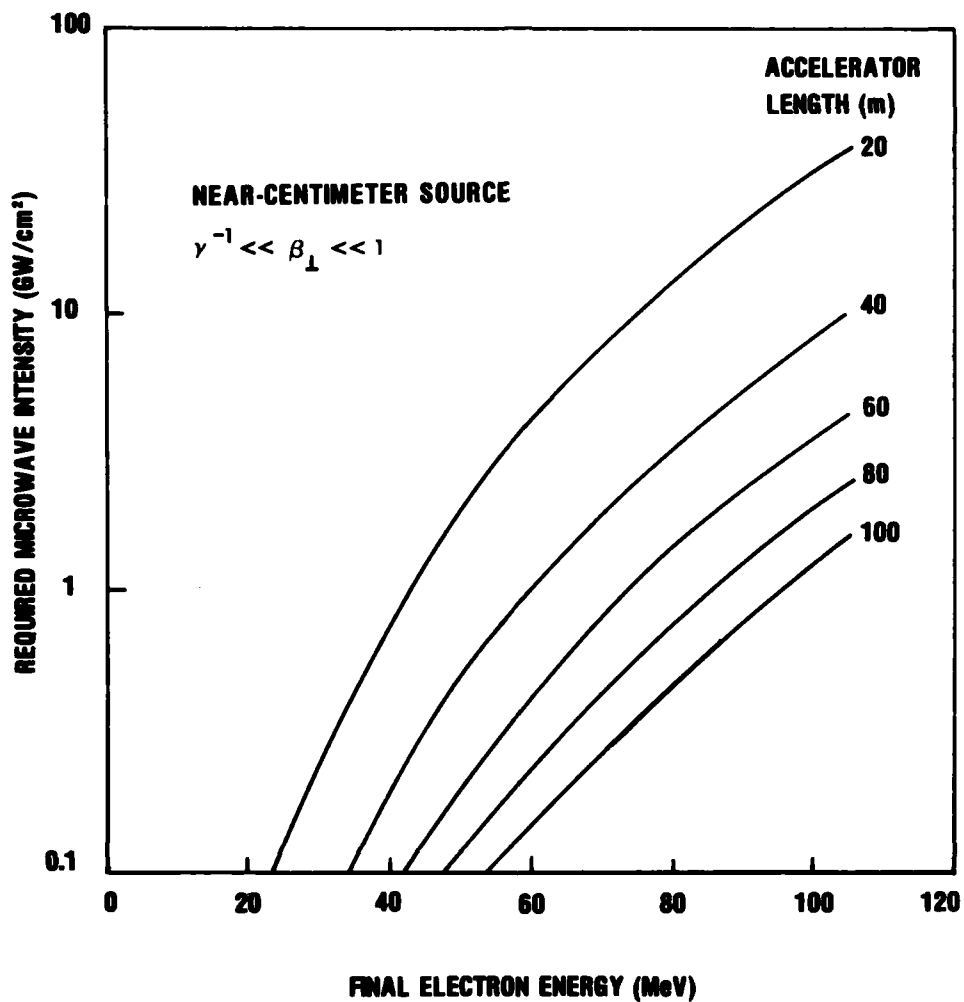


Figure 2. Required microwave source intensity as function of final electron energy and accelerator length for lower energies.

### 3. CONCLUSIONS

Although impressive gigawatt level microwave sources have recently been developed, the microwave intensity required for the acceleration method addressed here in the 100- to 500-MeV range of final electron energies exceeds the capabilities of existing microwave technology. Figure 1 tells us that a near-millimeter microwave source of intensity  $30 \text{ GW/cm}^2$  is required to accelerate electrons to 500 MeV for an accelerator length of 500 m. For a 100-m accelerator length, the required intensity would be  $800 \text{ GW/cm}^2$ .

It is possible that more sophisticated accelerator design together with more elaborate physical theory may improve these estimates to some extent and even make them more favorable. In particular, possible very beneficial collective effects have been totally ignored. Also intensive research in the development of new high-power microwave sources may make the required intensity regime accessible.

LITERATURE CITED

- (1) A. A. Kolomenskii and A. N. Lebedev, Soviet Physics JETP, 23 (1966), 733.
- (2) Robert B. Palmer, J. Appl. Phys., 43 (1972), 3014.
- (3) H. Motz, Contemp. Phys., 20 (1979), 547.
- (4) P. Sprangle and Cha-Mei Tang, IEEE Trans. Nucl. Sci., NS-28 (1981), 3346.
- (5) Robert B. Palmer, IEEE Trans. Nucl. Sci., NS-28 (1981), 3370.
- (6) T. Tajima and J. M. Dawson, Phys. Rev. Lett., 43 (1979), 267.
- (7) T. Tajima and J. M. Dawson, IEEE Trans. Nucl. Sci., NS-26 (1979), 4188.
- (8) T. Tajima and J. M. Dawson, IEEE Trans. Nucl. Sci., NS-28 (1981), 3416.
- (9) D. J. Sullivan and B. B. Godfrey, IEEE Trans. Nucl. Sci., NS-28 (1981), 3395.
- (10) M. S. Rabinovich and V. N. Tsytovich, Proceedings (TRUDY) of P. N. Lebedev Institute, 66 (1975), 1.
- (11) M. Friedman and M. Herndon, Phys. Rev. Lett., 28 (1972), 210; 29 (1972), 55.
- (12) D. A. Hammer, M. Friedman, V. L. Granatstein, M. Herndon, W. M. Manheimer, R. K. Parker, and P. Sprangle, Ann. N. Y. Acad. Sci., 251 (1975), 441.
- (13) V. L. Granatstein, M. Herndon, P. Sprangle, Y. Carmel, and J. A. Nation, Plasma Phys., 17 (1975), 23.
- (14) G. Bekefi and T. J. Orzechowski, Phys. Rev. Lett., 37 (1976), 379.
- (15) A. N. Didenko, A. G. Zherlitsyn, V. I. Zelentsov, A. S. Sulakshin, G. P. Fomenko, Yu. G. Shtein, and Yu. G. Yushkov, Sov. J. Plasma Phys., 2 (1976), 283.

LITERATURE CITED (Cont'd)

- (16) H. E. Brandt, A. Bromborsky, H. B. Bruns, and R. A. Kehs, Proceedings of 2nd International Conference on High Power Electron and Ion Beam Research and Technology, II, Cornell University, Ithaca, NY (1977), 649.
- (17) R. A. Mahaffey, P. Sprangle, J. Golden, and S. A. Kapetanacos, Phys. Rev. Lett., 39 (1977), 843.
- (18) V. I. Belousov, B. V. Bunkin, A. V. Gapanov-Grekhov, A. S. El'chaninov, F. Ya. Zagulov, N. F. Kovalev, S. D. Korovin, G. A. Mesyats, M. L. Osipov, M. I. Petelin, A. M. Prokhorov, I. P. Sisakyan, and A. V. Smorgonskii, Soviet Technical Physics Letters, 4 (1978), 584.
- (19) V. E. Nechaev, M. I. Petelin, and M. I. Fuks, Soviet Technical Physics Letters, 3 (1977), 310.
- (20) A. N. Didenko, A. S. Sulakshin, G. P. Fomenko, V. I. Tsvetkov, Yu. G. Shtein, and Yu. G. Yushkov, Soviet Technical Physics Letters, 4 (1978), 331.
- (21) A. N. Didenko, A. S. Sulakshin, G. P. Fomenko, Yu. G. Schtein, and Yu. G. Yushkov, Soviet Technical Physics Letters, 4 (1978), 3.
- (22) A. Palevsky and G. Bekefi, Phys. Fluids, 22 (1979), 986.
- (23) A. N. Didenko, Y. Y. Krasik, S. F. Perehygin, and G. P. Fomenko, Pis'ma Zh. Tekhnicheskoy Fiz., 5 (1979), 321.
- (24) A. V. Gapanov-Grekhov and M. I. Petelin, Vestn. Akad. Nauk SSSR, 4 (1979), 11.
- (25) Collection of Papers on the Electron Cyclotron Maser (Gyrotron), I, Soviet Papers, Naval Research Laboratory Memorandum Report 3937 (1979).
- (26) Howard E. Brandt, Alan Bromborsky, Henry B. Bruns, Richard A. Kehs, and George P. Lasche, Gigawatt Microwave Emission from a Relativistic Reflex Triode, Harry Diamond Laboratories HDL-TR-1917 (August 1980).

LITERATURE CITED (Cont'd)

- (27) R. A. Kehs, H. E. Brandt, A. Bromborsky, and G. Lasche, The Generation of Gigawatt Power Levels of Microwave Radiation, Proceedings of 1980 Army Science Conference (1981).
- (28) W. W. Destler, R. Kulkarni, C. D. Striffler, and R. L. Weiler, Bull. Am. Phys. Soc., 25 (1980), 886.
- (29) N. F. Kovalev, E. G. Krastelev, M. I. Kuznetsov, A. M. Maine, M. M. Ofitserov, V. A. Papdichev, M. I. Fuks, and L. N. Chekanova, Soviet Technical Physics Letters, 6 (1980), 197.
- (30) N. F. Kovalev, Pis'ma Zh. Tekhnicheskoy Fiz., 6 (1980), 459.
- (31) V. L. Granatstein, M. E. Read, and L. R. Barnett, IEEE Trans. Nucl. Sci., NS-28 (1981), 2733.

DISTRIBUTION

ADMINISTRATOR  
DEFENSE TECHNICAL INFORMATION CENTER  
ATTN DTIC-DDA (12 COPIES)  
CAMERON STATION, BUILDING 5  
ALEXANDRIA, VA 22314

COMMANDER  
US ARMY RSCH & STD GP (EUR)  
ATTN CHIEF, PHYSICS MATH BRANCH  
FPO NEW YORK 09510

COMMANDER  
US ARMY MISSILE & MUNITIONS  
CENTER & SCHOOL  
ATTN ATSK-CTD-F  
REDSTONE ARSENAL, AL 35809

DIRECTOR  
US ARMY MATERIEL SYSTEMS  
ANALYSIS ACTIVITY  
ATTN DRXSY-MP  
ABERDEEN PROVING GROUND, MD 21005

DIRECTOR  
US ARMY BALLISTIC RESEARCH LABORATORY  
ATTN DRDAR-TSB-S (STINFO)  
ATTN D. ECCLESHALL (5)  
ATTN C. HOLLANDSWORTH  
ATTN R. KREMENS  
ABERDEEN PROVING GROUND, MD 21005

US ARMY ELECTRONICS TECHNOLOGY &  
DEVICES LABORATORY  
ATTN DELET-DD  
ATTN N. WILSON  
FT MONMOUTH, NJ 07703

HQ USAF/SAMI  
WASHINGTON, DC 20330

WRIGHT-PATTERSON AFB  
FOREIGN TECHNOLOGY DIVISION/ETD  
ATTN J. BUTLER  
WRIGHT-PATTERSON AFB, OH 45433

UNDER SECRETARY OF DEFENSE  
FOR RESEARCH & ENGINEERING  
ATTN DEPUTY UNDER SECRETARY  
(RESEARCH & ADVANCED TECH)  
WASHINGTON, DC 20301

CENTRAL INTELLIGENCE AGENCY  
ATTN R. PETTIS  
PO BOX 1925  
WASHINGTON, DC 20013

US ARMY ERADCOM  
ATTN C. M. DESANTIS  
FT MONMOUTH, NJ 07703

DIRECTOR  
DEFENSE ADVANCED RESEARCH  
PROJECTS AGENCY  
ATTN D. H. TANIMOTO  
ATTN A. PIKE  
ATTN J. MANGANO  
ATTN R. GULLICKSON  
1400 WILSON BLVD  
ARLINGTON, VA 22209

DIRECTOR  
DEFENSE INTELLIGENCE AGENCY  
ATTN DT-1, NUCLEAR & APPLIED  
SCIENCES DIV  
ATTN ELECTRONIC WARFARE BRANCH  
WASHINGTON, DC 20301

DIRECTOR  
DEFENSE NUCLEAR AGENCY  
ATTN E. E. CONRAD, DEPUTY DIRECTOR  
SCIENTIFIC TECHNOLOGY  
ATTN RAEV, ELECTRONIC VULNERABILITY  
WASHINGTON, DC 20305

OFFICE OF THE UNDER SECRETARY OF  
DEFENSE FOR RESEARCH & ENGINEERING  
DIR ENERGY TECHNOLOGY OFFICE  
ATTN J. R. AIREY  
THE PENTAGON  
WASHINGTON, DC 20301

ASSISTANT SECRETARY OF THE ARMY (RDA)  
ATTN DEP FOR SCI & TECH  
WASHINGTON, DC 20310

OFFICE OF THE DEPUTY CHIEF OF STAFF  
FOR RESEARCH, DEVELOPMENT,  
& ACQUISITION  
DEPARTMENT OF THE ARMY  
ATTN DIRECTOR OF ARMY RESEARCH,  
M. E. LASSER  
ATTN DAMA-CSS-N, NUCLEAR TEAM  
ATTN DAMA-ARX-O, F. D. VERDERAME  
WASHINGTON, DC 20310

COMMANDER  
BALLISTIC MISSILE DEFENSE  
ADVANCED TECHNOLOGY CENTER  
ATTN D. SCHENK  
PO BOX 1500  
HUNTSVILLE, AL 35807

COMMANDER  
US ARMY FOREIGN SCIENCE  
& TECHNOLOGY CENTER  
FEDERAL OFFICE BLDG  
ATTN DRXST-SD, SCIENCES DIV  
ATTN T. CALDWELL  
220 7TH STREET, NE  
CHARLOTTESVILLE, VA 22901

DISTRIBUTION (Cont'd)

COMMANDER  
US ARMY MISSILE COMMAND  
ATTN DRDMI-TR, PHYSICAL SCIENCES DIR  
REDSTONE ARSENAL, AL 35809

ARMY RESEARCH OFFICE (DURHAM)  
PO BOX 12211  
ATTN H. ROBL  
ATTN R. LONTZ  
ATTN B. D. GUENTHER  
ATTN TECH LIBRARY  
RESEARCH TRIANGLE PARK, NC 27709

COMMANDER  
US ARMY ABERDEEN PROVING GROUND  
ATTN STEAP-TL TECH LIB  
ABERDEEN PROVING GROUND, MD 21005

DIRECTOR  
NAVAL RESEARCH LABORATORY  
ATTN 2600, TECHNICAL INFO DIV  
ATTN 5540, LASER PHYSICS  
ATTN 6000, MATL & RADIATION SCI & TE  
ATTN E. E. KEMPE  
ATTN J. GOLDEN  
ATTN V. L. GRANATSTEIN  
ATTN R. K. PARKER  
ATTN P. A. SPRANGLE  
ATTN C. A. KAPETANAKOS  
ATTN S. AHN  
ATTN T. P. COFFEY  
WASHINGTON, DC 20375

COMMANDER  
NAVAL SURFACE WEAPONS CENTER  
ATTN V. PUGLIELLI  
ATTN DX-21, LIBRARY DIV  
DAHLGREN, VA 22448

COMMANDER  
NAVAL SURFACE WEAPONS CENTER  
ATTN J. Y. CHOE  
ATTN H. UHM  
ATTN WA-13, HIGH-ENERGY LASER BR  
ATTN WA-50, NUCLEAR WEAPONS  
EFFECTS DIV  
ATTN WR, RESEARCH & TECHNOLOGY DEPT  
ATTN WR-40, RADIATION DIV  
ATTN WX-40, TECHNICAL LIB  
WHITE OAK, MD 20910

ASSISTANT SECRETARY OF THE AIR FORCE  
(RESEARCH & DEVELOPMENT)  
WASHINGTON, DC 20330

DIRECTOR  
AF OFFICE OF SCIENTIFIC RESEARCH  
BOLLING AFB  
ATTN NP, DIR OF PHYSICS  
ATTN R. BARKER  
WASHINGTON, DC 20332

COMMANDER  
AF WEAPONS LAB, AFSC  
ATTN A. H. GUENTHER  
ATTN W. E. PAGE  
ATTN J. GENEROSA  
ATTN LR, LASER DEV DIV  
KIRTLAND AFB, NM 87117

B. K. DYNAMICS  
ATTN R. J. LINZ  
15825 SHADY GROVE RD  
ROCKVILLE, MD 20850

LAWRENCE BERKELEY LAB  
ATTN A. FALTENS  
ATTN A. M. SESSLER  
BERKELEY, CA 94720

LAWRENCE LIVERMORE LABORATORY  
UNIVERSITY OF CALIFORNIA  
ATTN R. BRIGGS  
ATTN H.S. CABAYAN  
ATTN E. K. MILLER  
PO BOX 808  
LIVERMORE, CA 94550

LOS ALAMOS SCI LAB  
ATTN C. M. FOWLER  
ATTN B. WARNER  
ATTN J. LANDT  
ATTN R. HOEBERLING  
ATTN R. W. FREYMAN  
ATTN L. E. THODE  
PO BOX 1663  
LOS ALAMOS, NM 87545

SCIENCE APPLICATIONS INC  
ATTN F. CHILTON  
1200 PROSPECT ST  
PO BOX 2351  
LA JOLLA, CA 92038

MISSION RESEARCH CORPORATION  
ATTN B. GODFREY  
ATTN D. J. SULLIVAN  
1400 SAN MATEO BOULEVARD, SE  
ALBUQUERQUE, NM 87108

SANDIA LABORATORIES  
ATTN A. B. MILLER  
ATTN J. POWELL  
ATTN W. BALLARD  
4244 SANDIA LABS  
ALBUQUERQUE, NM 87115

UNIVERSITY OF MARYLAND  
DEPT OF ELECTRICAL ENGINEERING  
ATTN M. REISER  
ATTN W. DESTLER  
ATTN M. T. RHEE  
COLLEGE PARK, MD 20742

DISTRIBUTION (Cont'd)

MASSACHUSETTS INSTITUTE  
OF TECHNOLOGY  
PLASMA FUSION CENTER  
ATTN G. BEKEFI  
ATTN R. DAVIDSON  
CAMBRIDGE, MA 02139

UNIVERSITY OF TENNESSEE  
DEPT OF ELECTRICAL ENGINEERING  
ATTN I. ALEXEFF  
KNOXVILLE, TN 37916

UNIVERSITY OF WASHINGTON  
DEPT OF PHYSICS  
ATTN M. BAKER  
SEATTLE, WA 98195

US ARMY ELECTRONICS RESEARCH  
& DEVELOPMENT COMMAND  
ATTN TECHNICAL DIRECTOR, DRDEL-CT

HARRY DIAMOND LABORATORIES  
ATTN CO/TD/TSO/DIVISION DIRECTORS  
ATTN RECORD COPY, 81200  
ATTN HDL LIBRARY, (2 COPIES) 81100  
ATTN HDL LIBRARY, (WOODBIDGE) 81100  
ATTN TECHNICAL REPORTS BRANCH, 81300  
ATTN LEGAL OFFICE, 9700  
ATTN CHAIRMAN, EDITORIAL COMMITTEE  
ATTN MORRISON, R. E., 13500  
ATTN CHIEF, 21000  
ATTN CHIEF, 21100  
ATTN CHIEF, 21200  
ATTN CHIEF, 21300  
ATTN CHIEF, 21400  
ATTN CHIEF, 21500

ATTN CHIEF, 22000  
ATTN CHIEF, 22100  
ATTN CHIEF, 22300  
ATTN CHIEF, 22800  
ATTN CHIEF, 22900  
ATTN CHIEF, 11000  
ATTN CHIEF, 13000  
ATTN CHIEF, 13200  
ATTN CHIEF, 13300  
ATTN CHIEF, 15200  
ATTN CHIEF, 20240  
ATTN GRAYBILL, S., 22300  
ATTN STEWART, A., 20240  
ATTN BROWN, E., 00211  
ATTN WORTMAN, D., 13200  
ATTN BROMBORSKY, A., 22300  
ATTN KEHS, A., 22300  
ATTN GILBERT, R., 22800  
ATTN VANDERWALL, J., 22800  
ATTN CONWAY, T., 22300  
ATTN BLACKBURN, J., 22800  
ATTN MEYER, O., 22800  
ATTN OLDHAM, T., 22300  
ATTN MCLEAN, B., 22800  
ATTN SILVERSTEIN, J., 13300  
ATTN BRUNS, H., 15400  
ATTN HUTTLIN, G. A., 22900  
ATTN SOLN, J., 22300  
ATTN LEAVITT, R., 13200  
ATTN CROWNE, F., 13200  
ATTN MORRISON, C., 13200  
ATTN GERLACH, H., 11100  
ATTN LEVITT, L., 21400  
ATTN GARVER, R., 21100  
ATTN FAZI, C., 13500  
ATTN LIBELLO, L., 21100  
ATTN BRANDT, H. E., 22300 (40 COPIES)