

AD-A124-027

ENLISTMENT PROJECTION MODEL IMPROVEMENT PROGRAM(U) ARMY 1/1  
RECRUITING COMMAND FORT SHERIDAN ILL M TRAUTWEIN  
DEC 82 USAREC-RN-82-5

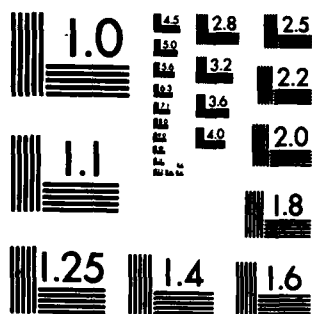
UNCLASSIFIED

F/G 5/9

NL



END  
DATE  
FORMED  
83  
DTIC



MICROCOPY RESOLUTION TEST CHART  
NATIONAL BUREAU OF STANDARDS-1963-A

ADA 124027

2

ENLISTMENT PROJECTION MODEL

IMPROVEMENT PROGRAM

by

Dr. Marvin Trautwein

December 1982

USAREC RESEARCH NOTE 82-5

Approved for public release; distribution unlimited

DTIC  
SELECTE  
FEB 1 1983

A

Research, Studies and Evaluation Division  
Program Analysis and Evaluation Directorate  
U.S. Army Recruiting Command  
Fort Sheridan, Illinois 60037

DTIC FILE COPY

83 01 31 154

## **DISCLAIMER NOTICE**

**THIS DOCUMENT IS BEST QUALITY  
PRACTICABLE. THE COPY FURNISHED  
TO DTIC CONTAINED A SIGNIFICANT  
NUMBER OF PAGES WHICH DO NOT  
REPRODUCE LEGIBLY.**

Unclassified

SECURITY CLASSIFICATION OF THIS PAGE (When Data Entered)

REPORT DOCUMENTATION PAGE		READ INSTRUCTIONS BEFORE COMPLETING FORM
1. REPORT NUMBER	2. GOVT ACCESSION NO. ADA124027	3. RECIPIENT'S CATALOG NUMBER
4. TITLE (and Subtitle) Enlistment Projection Model Improvement Program		5. TYPE OF REPORT & PERIOD COVERED Research Note
7. AUTHOR(s) Marvin W. Trautwein		6. PERFORMING ORG. REPORT NUMBER Number 82-5
9. PERFORMING ORGANIZATION NAME AND ADDRESS Research, Studies and Evaluation Division Program Analysis and Evaluation Directorate US Army Recruiting Command Fort Sheridan, IL 60037		8. CONTRACT OR GRANT NUMBER(s) N/A
11. CONTROLLING OFFICE NAME AND ADDRESS Same as Block 9		10. PROGRAM ELEMENT, PROJECT, TASK AREA & WORK UNIT NUMBERS
14. MONITORING AGENCY NAME & ADDRESS (if different from Controlling Office)		12. REPORT DATE December 1982
		13. NUMBER OF PAGES 13
		15. SECURITY CLASS. (of this report) Unclassified
		15a. DECLASSIFICATION/DOWNGRADING SCHEDULE
16. DISTRIBUTION STATEMENT (of this Report) Approved for public release; distribution unlimited.		
17. DISTRIBUTION STATEMENT (of the abstract entered in Block 20, if different from Report)		
18. SUPPLEMENTARY NOTES		
19. KEY WORDS (Continue on reverse side if necessary and identify by block number)		
20. ABSTRACT (Continue on reverse side if necessary and identify by block number) The Army is trying to improve its method of assigning recruiting missions. This research note details the latest effort in this regard. The US Army District Recruiting Command missions for AFQT category I-III A male high school seniors and high school graduates are assigned according to a log-linear regression/forecasting model. All other mission categories are assigned according to the best available estimate of market population. ↑		

DD FORM 1473  
1 JAN 73

EDITION OF 1 NOV 65 IS OBSOLETE

Unclassified

SECURITY CLASSIFICATION OF THIS PAGE (When Data Entered)

**DISCLAIMER**

The views, opinions, and findings in this report are those of the author and should not be construed as an official Department of the Army position, policy, or decision, unless so designated by other authorized documents.

**ABSTRACT**

The Army is trying to improve its method of assigning recruiting missions. This research note details the latest effort in this regard. The US Army District Recruiting Command missions for AFQT category I-III A male high school seniors and high school graduates are assigned according to a log-linear regression/forecasting model. All other mission categories are assigned according to the best available estimate of market population.



68101-100  
1981

A	
---	--

## TABLE OF CONTENTS

	<u>Page</u>
TITLE PAGE.....	i
DISCLAIMER.....	11
ABSTRACT.....	11
TABLE OF CONTENTS.....	111
I. BACKGROUND.....	1
II. RECENT CHANGES AND THEIR EFFECTS.....	1
III. FUTURE IMPROVEMENTS.....	2
IV. REFERENCES.....	2
APPENDIX A: Historical Data Base.....	A-1
APPENDIX B: Projection Data Base.....	B-1
APPENDIX C: Projection Page.....	C-1
APPENDIX D: Missions.....	D-1
APPENDIX E: Run Chart/Block Diagram.....	E-1

## I. BACKGROUND.

Since late 1979, Headquarters, US Army Recruiting Command (HQ, USAREC) has assigned recruiting missions to district recruiting commands (DRC) by using computer models. The mission distribution model used for allocating FY 81 and FY 82 missions is described by Fagan (1981) and Morey (1982).

Starting with a DRC quarterly data base, it used linear regression and projection to forecast seven dependent variables for the next four quarters. The forecasts were constrained to be no greater than 30 percent above the last production observation and no less than the average of the last production observation and the average of all past production. The seven forecast variables were then apportioned into 13 accession mission categories and 19 contract mission categories. The DRC percentage of the Command total in each mission category was applied to the Command mission (assigned by the Department of the Army) to give the desired mission breakout.

There were several problems with this procedure. HQ USAREC observed that nearly all forecasts constrained (either high or low) so that the regression/projection was not contributing much to mission assignment. Morey (1982) recommended many changes, among them the use of a nonlinear multiplicative model, a monthly data base, more detailed advertising data, limiting modeling efforts to supply-limited mission categories, and the use of Park's regression.

## II. RECENT CHANGES.

During October and November 1982, the model was subjected to many experimental changes. The result of these experiments is a model that attempts to forecast only for AFQT category I-III high school senior/high school graduate male contracts. The model used is multiplicative-exponential, linear in logs, and thus solvable by ordinary least squares. Hispanic population was added to the set of independent variables. REACT leads (coupons from magazine advertisements) and recruiters' aides were dropped. The dependent variable and all independent variables that were not rates already, were divided by high school seniors, putting the model on a "per-high-school-senior" basis.  $R^2$ s (correlation coefficient) from the resulting five regional recruiting command regressions are shown in Table 1. All appear acceptable except Southwest, which needs more work. Adjusted  $R^2$  is a better statistic for explaining the variance than  $R^2$ , because it compensates for the loss in degrees of freedom in fitting the model. (In the extreme, one can get perfect  $R^2$ s by using a large enough number of independent variables.)

Table 1. Regression correlation coefficients for regional recruiting commands.

<u>Region</u>	<u>R<sup>2</sup></u>	<u>Adjusted R<sup>2</sup></u>
Northeast	.98	.98
Southeast	.84	.82
Southwest	.59	.56
Midwest	.78	.74
Western	.86	.83

The five region equations are evaluated with DRC projected independent variable data to produce DRC forecasts for the next four quarters. These forecasts appear quite reasonable without the use of constraints.

Since the model forecasts only for AFQT category I-III A senior and graduate males, other mission categories must be allocated by other means. To this end, a market population data set was developed for the 56 DRC for the different categories of contract missions. Data were found for all categories except non-high school graduates. Past production was substituted in these categories temporarily. For a given DRC, the ratio of AFQT category I-III A senior males to category I-III A high school graduate males was used to divide the projected category I-III A graduate senior male number into seniors and graduates. Then, as in the previous model, the DRC percentage of Command was computed for each mission category and used to allocate Command mission.

### III. FUTURE IMPROVEMENTS

More detailed advertising expenditure data, disaggregated to months, have been requested. When these become available, the model's data base will be made monthly, to allow for analysis of lags. Park's regression may be available by summer of 1983, when the Statistical Analysis System is expected to be available for HQ USAREC UNIVAC computers. Hopefully, valid data will be found for non-high school graduate population. Southwest region needs further analysis aimed at improving the anemic  $R^2$ . As Morey strongly suggests, the model should be validated against production data.

### IV. REFERENCES.

1. Morey, Richard C., and McCann, John M., "The Army's Enlisted Production Model: A Critique and Suggested Directions for the Future", unpublished research report, The Fuqua School of Business, Duke University, August, 1982.

2. Fagan, Thomas W., "USAREC Distribution Model," unpublished paper, Department of Economics, U.S. Military Academy, October, 1981.

# ENLISTMENT PROJECTION MODEL

HISTORICAL DATA BASE AS OF 12-16-82

USAPCPAE-DE DR. TRAUTWEIN PHONE: (312) 926-2679 (H) 454-2679

## VARIABLES

NAME	MEANING	NAME	MEANING
TIME	FISCAL YEAR-ZERO-QUARTER	DOB NPSM ACCN	DOB NON-PRIOR SERVICE MALE ACCESSIONS
BRC	DISTRICT RECRUITING COMMAND CODE	DOB HSDGM ACCN	DOB HIGH SCHOOL DIPLOMA GRADUATE MALE ACCESSIONS
AREA	BRC AREA IN SQUARE MILES	INCME	MEDIAN DISPOSABLE FAMILY INCOME
AMA	QUALIFIED MILITARY AVAILABLE	BLACK POP	BLACK POPULATION
HISP	HISPANIC POPULATION	ARMY HNSG CONT	ARMY HNSG MALE CONTRACTS (MC 1-3A)
MS SRS	MALE HIGH SCHOOL SENIORS (MC 1-3A)	ARMY HSG CONT	ARMY HIGH SCHOOL GRAD/SP (MC 1-3A) MALE CONTRACTS
RUTS	ON-PRODUCTION ARMY RECRUITERS	ARMY ENLST PROP	ACTIVE ARMY ENLISTMENT PROPENSITY
ARMY NPSM ACCN	ARMY NON-PRIOR SERVICE MALE ACCESSIONS	AIRF HANNM	HOMETOWN RECRUITER AIDES (AVERAGE)
ARMY HSDGM ACCN	ARMY HIGH SCHOOL DIPLOMA GRADUATE MALE ACCESSIONS	ARMY 1-3A NPSM	ARMY MC 1-3A MALE ACCESSIONS
UNEAP	BRC OVERALL UNEMPLOYMENT	ARMY PS TOT	ARMY PRIOR SERVICE TOTAL ACCESSIONS
ACTR EXP	PERCENT OF BRC RECRUITERS WITH ONE OR MORE YEARS EXPERIENCE	ARMY HPS FEM	ARMY GRAD-SP FEMALE CONTRACTS (MC 1-3A)
ARMY RCTP DOB	ARMY RECRUITERS AS PERCENT OF DOB RECRUITERS BY BRC	BRC ADV	BRC LOCAL ADVERTISING EXPENDITURES

ENLISTMENT PROJECTION MODEL

HISTORICAL DATA BASE

USARCPAC-RE

D TIME	P C	M (00)	A (00)	NS SP (00)	M TR	S ACCN	W ACCN	R %	A %	R %	M ACCN	D ACCN	M ACCN	D ACCN	I ACCN	BLACK ARMY				ARMY				DPC ADV
																POP	MSG	MSG	ENLST	WIDE	J-3A	PS	MPS	
8101 1A	267	541	30013931	59	206	113	7.2	81.4	41.1	656	466	14818	289	23	109	12.6	15.2	105	53	36	205			
8102 1A	267	555	30013931	59	271	144	8.1	77.6	41.1	722	505	15137	289	34	152	12.6	14.3	135	50	41	90			
8103 1A	267	555	30013931	60	168	115	8.1	77.3	41.1	610	471	15456	289	40	89	12.6	16.3	100	39	29	161			
8104 1A	267	555	30013931	55	356	349	7.2	71.8	41.1	1162	1042	15775	289	26	104	12.6	8.0	202	42	24	143			
8201 1A	267	555	30013931	61	204	121	6.3	66.3	43.5	577	445	16094	289	31	109	12.6	16.0	97	41	41	357			
8202 1A	267	555	30013931	53	256	193	8.2	80.9	43.5	654	523	16413	289	44	208	12.6	14.7	183	51	50	92			
8203 1A	267	555	30013931	47	151	141	7.9	74.5	42.0	547	479	16732	289	13	161	12.6	16.0	190	6	34	129			
8101 1B	151	1338	103337180	139	505	510	5.6	76.5	40.7	1669	1436	1418316542	31	205	12.3	26.9	249	100	63	456				
8102 1B	151	1338	103337180	140	691	533	6.9	73.6	40.7	1695	1348	1451016542	61	285	12.3	32.0	288	176	63	540				
8103 1B	151	1338	103337180	140	502	377	6.9	81.5	40.7	706	546	1483716542	57	271	12.3	30.3	187	131	72	253				
8104 1B	151	1338	103337180	149	763	755	7.9	80.9	40.7	1986	1837	1516316542	78	301	12.3	12.7	272	102	102	333				
8201 1B	151	1338	103337180	162	654	494	7.1	83.0	41.4	1453	1166	1549016542	50	237	12.3	32.0	254	147	61	513				
8202 1B	151	1338	103337180	157	776	631	8.9	76.5	41.4	1612	1321	1581716542	131	459	12.3	28.3	442	126	100	871				
8203 1B	151	1338	103337180	141	79	553	8.5	71.9	44.9	1493	1333	1614416542	23	416	12.3	43.0	298	20	119	413				
8101 1C	60	1355	146331937	114	353	228	5.1	73.6	36.8	1199	573	13569 2358	12	186	10.3	18.3	194	86	31	281				
8102 1C	61	1375	146331937	111	421	264	6.5	88.6	36.8	1285	923	13860 2358	87	224	10.3	17.7	225	108	41	406				
8103 1C	61	1375	146331937	103	409	274	6.5	87.2	36.8	1193	897	14152 2358	63	154	10.3	19.3	217	91	54	279				
8104 1C	61	1375	146331937	92	571	546	6.9	74.1	36.8	2055	1829	14443 2358	70	174	10.3	8.3	299	75	55	401				
8201 1C	61	1375	146331937	110	445	278	6.9	74.1	32.2	1249	937	14734 2358	53	164	10.3	25.0	242	38	42	427				
8202 1C	61	1375	146331937	112	432	313	8.0	74.3	32.2	1236	975	15025 2358	77	295	10.3	21.3	316	34	60	225				
8203 1C	61	1375	146331937	96	365	347	8.5	64.5	37.7	1237	1067	15316 2358	27	287	10.3	35.0	225	11	42	331				
8101 1D	399	464	10513539	62	192	106	6.3	75.1	39.7	570	408	11935	71	22	129	17.9	17.5	103	53	34	112			
8102 1D	399	481	10513539	60	258	144	6.9	80.2	39.7	683	482	12213	71	44	149	17.9	15.0	139	61	40	82			
8103 1D	399	481	10513539	61	226	164	6.9	79.3	39.7	604	466	12490	71	34	120	17.9	11.3	114	49	38	77			
8104 1D	399	481	10513539	55	367	376	7.0	70.2	39.7	1082	970	12768	71	31	110	17.9	6.0	219	36	25	92			
8201 1D	399	481	10513539	63	210	131	5.2	75.3	41.5	603	469	13045	71	38	177	17.9	19.0	120	49	35	219			
8202 1D	399	481	10513539	57	266	197	7.4	87.4	41.5	668	529	13322	71	44	242	17.9	15.0	208	57	52	137			
8203 1D	399	481	10513539	49	224	220	8.7	81.0	41.3	627	568	13599	71	15	180	17.9	19.0	127	12	35	104			
8101 1E	249	1057	31030949	84	332	203	7.6	65.6	38.0	1015	757	14373 1091	35	179	11.6	25.2	170	73	42	193				
8102 1E	249	1057	31030949	93	383	239	7.9	62.9	38.0	1114	849	14668 1091	32	206	11.6	20.3	167	90	49	155				
8103 1E	249	1057	31030949	97	352	277	7.9	63.4	38.0	714	583	14063 1091	42	159	11.6	18.0	176	64	42	190				
8104 1E	249	1057	31030949	107	572	549	8.1	68.2	38.0	1704	1502	15257 1091	40	170	11.6	10.7	307	51	35	100				
8201 1E	249	1057	31030949	110	321	210	8.1	67.9	34.8	1001	792	15552 1091	47	224	11.6	28.7	172	81	60	215				
8202 1E	249	1057	31030949	105	343	267	10.7	85.0	34.8	990	814	15847 1091	51	319	11.6	23.0	243	97	60	254				
8203 1E	249	1057	31030949	83	408	356	10.0	80.6	41.5	1101	1002	16142 1091	12	315	11.6	19.0	239	7	41	128				
8101 1F	76	918	138820406	79	217	130	5.5	63.8	29.7	896	637	14557 2304	14	100	10.4	15.8	117	45	32	279				
8102 1F	77	941	138820406	82	276	156	6.2	62.6	29.7	884	606	14864 2304	45	131	10.4	14.7	119	54	34	183				
8103 1F	77	941	138820406	83	221	129	6.2	72.6	29.7	816	591	15170 2304	36	100	10.4	15.0	98	53	42	210				
8104 1F	77	941	138820406	82	448	435	6.9	68.1	29.7	1518	1378	15477 2304	51	112	10.4	5.3	199	42	42	184				
8201 1F	77	941	138820406	82	327	199	6.3	69.2	37.4	957	723	15783 2304	42	143	10.4	16.0	158	50	46	258				
8202 1F	77	941	138820406	83	266	196	7.4	84.6	37.4	847	652	16089 2304	58	244	10.4	15.7	193	47	38	175				
8203 1F	77	941	138820406	79	218	197	7.0	74.2	37.2	809	676	16395 2304	17	176	10.4	22.0	122	11	43	403				
8101 1G	14	16321195029167	115	414	234	7.2	72.0	34.0	1376	908	1560715165	4	114	6.6	17.6	125	78	41	84					

# ENLISTMENT PROJECTION MODEL

PROJECTION DATA BASE AS OF 12-16-82

USAPCPAE-RE DR. TRAUTWEIN PHONE: (312) 926-2679 (A) 459-2679

## VARIABLES

NAME	MEANING	NAME	MEANING
TIME	FISCAL YEAR-ZERO-QUARTER	NOB NPSM ACCN	NOB NON-PRIOR SERVICE MALE ACCESSIONS
DRC	DISTRICT RECRUITING COMMAND CODE	NOB HSDGM ACCN	NOB HIGH SCHOOL DIPLOMA GRADUATE MALE ACCESSIONS
MREA	DRC AREA IN SQUARE MILES	INCONE	MEDIAN DISPOSABLE FAMILY INCOME
AWA	(MIA)-TED MILITARY AVAILABLE	BLACK POP	BLACK POPULATION
HISP	HISPANIC POPULATION	ARMY HNSG CONT	ARMY HNSG MALE CONTRACTS (MC 1-3A)
HS SGRS	MALE HIGH SCHOOL SENIORS (MC 1-3A)	ARMY HSG CONT	ARMY HIGH SCHOOL GRAD/SP (MC 1-3A) MALE CONTRACTS
RCTRS	ON-PRODUCTION ARMY RECRUITERS	ARMY ENLST PROP	ACTIVE ARMY ENLISTMENT PROPENSITY
ARMY NPSM ACCLN	ARMY NON-PRIOR SERVICE MALE ACCESSIONS	AIDE NMMMD	HOMETOWN RECRUITER AIDES (AVERAGE)
ARMY HSDGM ACCN	ARMY HIGH SCHOOL DIPLOMA GRADUATE MALE ACCESSIONS	ARMY 1-3A NPSM	ARMY MC 1-3A MALE ACCESSIONS
UNEMP	DRC OVERALL UNEMPLOYMENT	ARMY PS TOT	ARMY PRIOR SERVICE TOTAL ACCESSIONS
RCTP EXP	PERCENT OF DRC RECRUITERS WITH ONE OR MORE YEARS EXPERIENCE	ARMY NPS FEM	ARMY GRAD-SP FEMALE CONTRACTS (MC 1-3A)
ARMY RCTR NOB	ARMY RECRUITERS AS PERCENT OF NOB RECRUITERS BY DRC	DRC ADV	DRC LOCAL ADVERTISING EXPENDITURES

ENLISTMENT PROJECTION MODEL

PROJECTION DATA BASE

USARPCAE-DE

D P TIME	AREA C	QWR (00)	NS HI-SP (00)	ARMY PC-TRS (00)	ARMY NPSN ACCN	UN- NPSN ACCN	PCTR EMP %	ARMY EXP %	ARMY PCTR %	DOB ACTN	DOB ACCN	BLACK PDP (00)	ARMY				ARMY			DEF ARMY (00)	
													AMCG CNT	NS6 CNT	NS6 PROP	EMST MANNG	WIRE NPSN	1-30 TOT	PS FEM		NPS (00)
8204 1A	267	555	30013931	47	0	0	7.9	74.5	42.0	0	0	17051	289	0	0	12.6	16.0	0	0	0	115
8301 1A	267	555	30013931	47	0	0	7.9	74.5	42.0	0	0	17370	289	0	0	12.6	16.0	0	0	0	581
8302 1A	267	555	30013931	47	0	0	7.9	74.5	42.0	0	0	17669	289	0	0	12.6	16.0	0	0	0	109
8303 1A	267	555	30013931	47	0	0	7.9	74.5	42.0	0	0	18008	289	0	0	12.6	16.0	0	0	0	146
8204 1B	151	1338	103337180	141	0	0	8.5	71.9	44.9	0	0	1647116542	0	0	0	12.3	43.0	0	0	0	267
8301 1B	151	1338	103337180	141	0	0	8.5	71.9	44.9	0	0	1679816542	0	0	0	12.3	43.0	0	0	0	835
8302 1B	151	1338	103337180	141	0	0	8.5	71.9	44.9	0	0	1712516542	0	0	0	12.3	43.0	0	0	0	1032
8303 1B	151	1338	103337180	141	0	0	8.5	71.9	44.9	0	0	1745216542	0	0	0	12.3	43.0	0	0	0	466
8204 1C	61	1375	146331937	96	0	0	8.5	64.5	37.7	0	0	15687	2358	0	0	10.3	35.0	0	0	0	322
8301 1C	61	1375	146331937	96	0	0	8.5	64.5	37.7	0	0	15898	2358	0	0	10.3	35.0	0	0	0	695
8302 1C	61	1375	146331937	96	0	0	8.5	64.5	37.7	0	0	16189	2358	0	0	10.3	35.0	0	0	0	267
8303 1C	61	1375	146331937	96	0	0	8.5	64.5	37.7	0	0	16480	2358	0	0	10.3	35.0	0	0	0	373
8204 1D	399	481	10513539	49	0	0	8.7	81.0	41.3	0	0	13876	71	0	0	17.9	19.0	0	0	0	74
8301 1D	399	481	10513539	49	0	0	8.7	81.0	41.3	0	0	14152	71	0	0	17.9	19.0	0	0	0	357
8302 1D	399	481	10513539	49	0	0	8.7	81.0	41.3	0	0	14438	71	0	0	17.9	19.0	0	0	0	62
8303 1D	399	481	10513539	49	0	0	8.7	81.0	41.3	0	0	14707	71	0	0	17.9	19.0	0	0	0	117
8204 1E	249	1057	31030949	83	0	0	10.0	80.6	41.5	0	0	16437	1091	0	0	11.6	19.0	0	0	0	350
8301 1E	249	1057	31030949	83	0	0	10.0	80.6	41.5	0	0	16732	1091	0	0	11.6	19.0	0	0	0	301
8302 1E	249	1057	31030949	83	0	0	10.0	80.6	41.5	0	0	17027	1091	0	0	11.6	19.0	0	0	0	144
8303 1E	249	1057	31030949	83	0	0	10.0	80.6	41.5	0	0	17322	1091	0	0	11.6	19.0	0	0	0	144
8204 1F	77	941	138824406	79	0	0	7.0	74.2	37.2	0	0	16701	2304	0	0	10.4	22.0	0	0	0	148
8301 1F	77	941	138824406	79	0	0	7.0	74.2	37.2	0	0	17007	2304	0	0	10.4	22.0	0	0	0	420
8302 1F	77	941	138824406	79	0	0	7.0	74.2	37.2	0	0	17313	2304	0	0	10.4	22.0	0	0	0	207
8303 1F	77	941	138824406	79	0	0	7.0	74.2	37.2	0	0	17619	2304	0	0	10.4	22.0	0	0	0	455
8204 1G	14	11241	195029167	111	0	0	9.0	84.1	37.9	0	0	1808015165	0	0	0	6.6	19.0	0	0	0	110
8301 1G	14	11241	195029167	111	0	0	9.0	84.1	37.9	0	0	1842215165	0	0	0	6.6	19.0	0	0	0	561
8302 1G	14	11241	195029167	111	0	0	9.0	84.1	37.9	0	0	1876415165	0	0	0	6.6	19.0	0	0	0	305
8303 1G	14	11241	195029167	111	0	0	9.0	84.1	37.9	0	0	1910615165	0	0	0	6.6	19.0	0	0	0	331
8204 1H	37	938	358122819	77	0	0	8.7	78.9	40.0	0	0	17880	5751	0	0	8.7	26.0	0	0	0	55
8301 1H	37	938	358122819	77	0	0	8.7	78.9	40.0	0	0	18213	5751	0	0	8.7	26.0	0	0	0	314
8302 1H	37	938	358122819	77	0	0	8.7	78.9	40.0	0	0	18546	5751	0	0	8.7	26.0	0	0	0	184
8303 1H	37	938	358122819	77	0	0	8.7	78.9	40.0	0	0	18879	5751	0	0	8.7	26.0	0	0	0	303
8204 1I	33	870	275223381	70	0	0	9.3	57.7	40.9	0	0	17306	5174	0	0	9.4	13.0	0	0	0	128
8301 1I	33	870	275223381	70	0	0	9.3	57.7	40.9	0	0	17699	5174	0	0	9.4	13.0	0	0	0	435
8302 1I	33	870	275223381	70	0	0	9.3	57.7	40.9	0	0	18012	5174	0	0	9.4	13.0	0	0	0	260
8303 1I	33	870	275223381	70	0	0	9.3	57.7	40.9	0	0	18325	5174	0	0	9.4	13.0	0	0	0	288
8204 1J	59	1634	223428859	111	0	0	8.8	67.4	41.8	0	0	1685010388	0	0	0	9.7	27.0	0	0	0	108
8301 1J	59	1634	223428859	111	0	0	8.8	67.4	41.8	0	0	1715710388	0	0	0	9.7	27.0	0	0	0	501
8302 1J	59	1634	223428859	111	0	0	8.8	67.4	41.8	0	0	1746410388	0	0	0	9.7	27.0	0	0	0	449
8303 1J	59	1634	223428859	111	0	0	8.8	67.4	41.8	0	0	1777110388	0	0	0	9.7	27.0	0	0	0	382

ENLISTMENT PROJECTIONS  
COBB-DOUGLAS MODEL

FOR COMMAND LEVEL: ALBANY

DRC -PPC COEFFS

DEPENDENT VARIABLE: MSGCOM

RSD= .97861

REGRESSION COEFFICIENTS

AREA = -.18498 OMA = .38363 REACT = -.11228 HESMR = .00000  
 RLTPS = 1.73200 UNEMP = .31210 RCTREX = .46430 INCOME = 1.44679  
 BLACKS = -.11126 PROPEN = .89080 AIDES = .00000 BDBRCR = -.82573  
 BDM = .00000 BDM = .00000 ADVCS = .00000 MEVAR = .00000  
 SEVAR = .00000 SUVAR = .00000 MUVAR = .00000 Q1VAR = .00000  
 Q2VAR = .21416 Q3VAR = .00000 BRCADV = .00000 POLICY = .00000  
 CONSTA = -18.39925

MSGCOM PROJECTIONS

QTR1= 127. QTR2= 162. QTR3= 134. QTR4= 124. YEAR= 547.

ENLISTMENT PROJECTIONS  
COBB-DOUGLAS MODEL

FOR COMMAND LEVEL: BALTIMORE

DRC -PPC COEFFS

DEPENDENT VARIABLE: MSGCOM

RSD= .97861

REGRESSION COEFFICIENTS

AREA = -.18498 OMA = .38363 REACT = -.11228 HESMR = .00000  
 RLTPS = 1.73200 UNEMP = .31210 RCTREX = .46430 INCOME = 1.44679  
 BLACKS = -.11126 PROPEN = .89080 AIDES = .00000 BDBRCR = -.82573  
 BDM = .00000 BDM = .00000 ADVCS = .00000 MEVAR = .00000  
 SEVAR = .00000 SUVAR = .00000 MUVAR = .00000 Q1VAR = .00000  
 Q2VAR = .21416 Q3VAR = .00000 BRCADV = .00000 POLICY = .16000  
 CONSTA = -18.39925

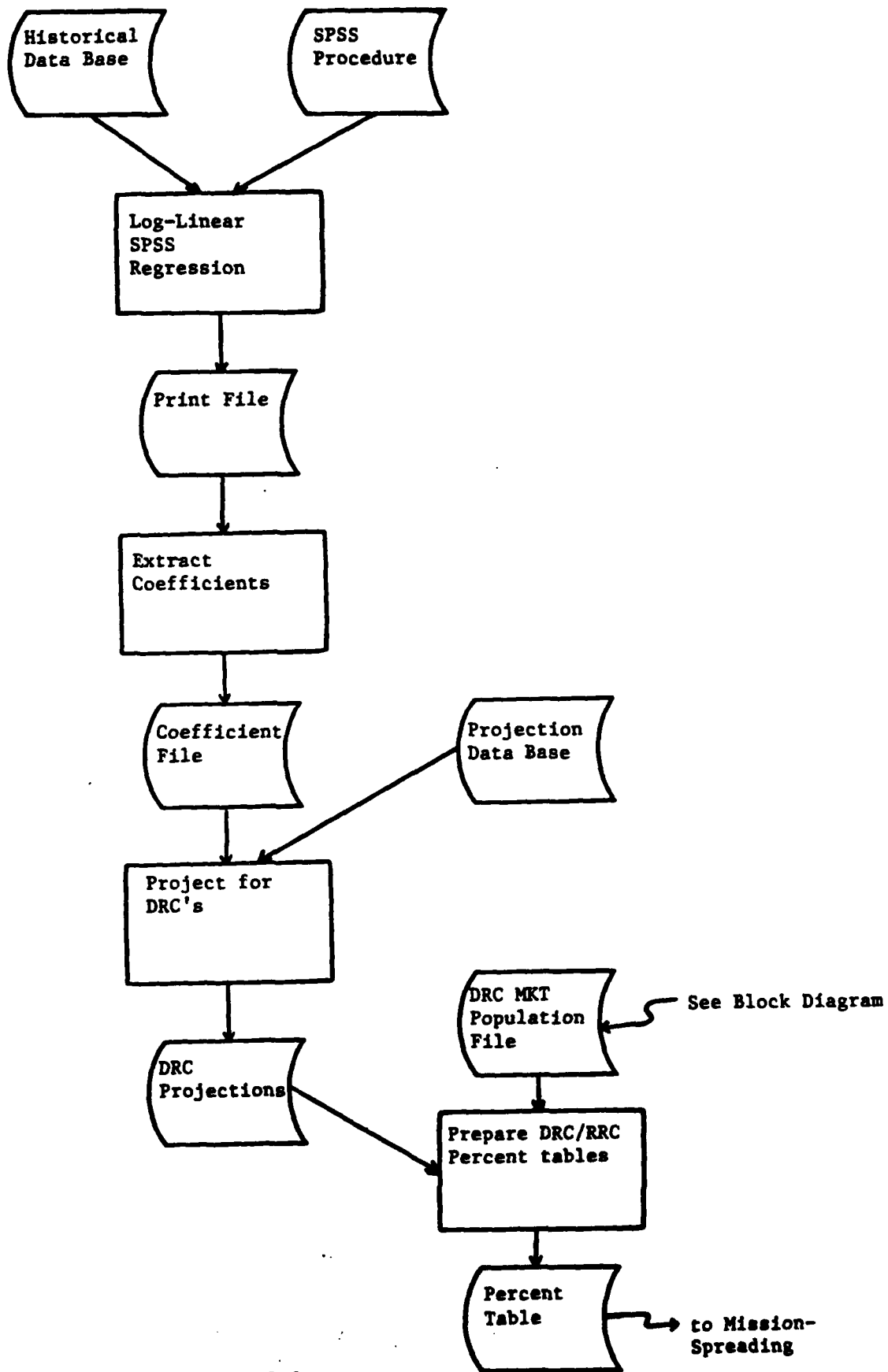
MSGCOM PROJECTIONS

QTR1= 346. QTR2= 441. QTR3= 366. QTR4= 336. YEAR= 1489.

Missions

TEST RUN FOR RESEARCH NOTE,					RUN 12-16-82 AT 1200																		
(M)	(M)	(M)	(M)	(M)	(M)	(M)	(M)	(F)	(F)	(F)	(F)	(F)	(F)	(F)	PS	(M)	(M)	(M)	(M)	(F)	(F)	(F)	TOTAL
IIIA	IIIA	IIIB	IIIB	IV	IV	IIIA	IIIB	IIIA	IIIA	IIIB	IIIB	IV	IV		TOT	TOT	TOT	TOT	TOT	TOT	TOT	TOT	
HSSR	HSDG	HSSR	HSDG	HSSR	HSDG	HMSG	HMSG	HSSR	HSDG	HSSR	HSDG	HSSR	HSDG		HSSR	HSDG	HMSG	HPS	HSSR	HSDG	HPS		
COMMAND: ATLANTH																							
RE-FY83Q	99	224	40	58	0	143	37	48	5	40	0	19	0	0	35	139	425	85	649	5	59	64	748
RE-FY83Q	99	224	40	58	0	143	37	48	5	40	0	19	0	0	35	139	425	85	649	5	59	64	748
COMMAND: BECKLEY																							
RE-FY83Q	43	96	23	32	0	53	28	7	3	21	4	10	4	0	11	66	181	35	282	3	31	34	327
RE-FY83Q	43	96	23	32	0	53	28	7	3	21	4	10	4	0	11	66	181	35	282	3	31	34	327
COMMAND: CHARLOTTE																							
RE-FY83Q	60	128	31	42	0	63	46	15	4	32	0	14	0	0	26	91	233	61	385	4	46	50	461
RE-FY83Q	60	128	31	42	0	63	46	15	4	32	0	14	0	0	26	91	233	61	385	4	46	50	461
COMMAND: COLUMBIA																							
RE-FY83Q	82	183	29	41	0	75	44	11	3	25	0	13	0	0	31	111	299	55	465	3	38	41	537
RE-FY83Q	82	183	29	41	0	75	44	11	3	25	0	13	0	0	31	111	299	55	465	3	38	41	537
COMMAND: JACKSONVILLE																							
RE-FY83Q	132	304	42	61	0	119	160	0	7	56	0	21	0	0	64	174	484	160	818	7	77	84	966
RE-FY83Q	132	304	42	61	0	119	160	0	7	56	0	21	0	0	64	174	484	160	818	7	77	84	966
COMMAND: LOUISVILLE																							
RE-FY83Q	90	194	36	50	0	71	75	0	5	37	0	16	0	0	23	126	315	75	516	5	53	58	597
RE-FY83Q	90	194	36	50	0	71	75	0	5	37	0	16	0	0	23	126	315	75	516	5	53	58	597
COMMAND: MIAMI																							
RE-FY83Q	97	205	32	44	0	62	103	22	4	35	0	16	0	0	31	129	311	125	565	4	51	55	651
RE-FY83Q	97	205	32	44	0	62	103	22	4	35	0	16	0	0	31	129	311	125	565	4	51	55	651
COMMAND: MONTGOMERY																							
RE-FY83Q	108	238	40	57	0	146	58	41	5	35	0	19	0	0	36	148	441	99	688	5	54	59	783
RE-FY83Q	108	238	40	57	0	146	58	41	5	35	0	19	0	0	36	148	441	99	688	5	54	59	783
COMMAND: NASHVILLE																							
RE-FY83Q	92	205	51	71	0	109	80	7	7	53	0	23	0	0	33	143	385	87	615	7	76	83	731
RE-FY83Q	92	205	51	71	0	109	80	7	7	53	0	23	0	0	33	143	385	87	615	7	76	83	731
COMMAND: RALEIGH																							
RE-FY83Q	77	162	34	46	0	73	36	11	4	27	0	15	0	0	27	111	281	47	439	4	42	46	512
RE-FY83Q	77	162	34	46	0	73	36	11	4	27	0	15	0	0	27	111	281	47	439	4	42	46	512
COMMAND: RICHMOND																							
RE-FY83Q	101	208	32	42	0	66	45	55	5	37	0	10	0	0	40	133	316	100	549	5	47	52	641
RE-FY83Q	101	208	32	42	0	66	45	55	5	37	0	10	0	0	40	133	316	100	549	5	47	52	641
COMMAND: SAN JUAN																							
RE-FY83Q	23	44	9	11	0	41	12	11	1	4	0	4	0	0	33	32	96	23	151	1	8	9	193
RE-FY83Q	23	44	9	11	0	41	12	11	1	4	0	4	0	0	33	32	96	23	151	1	8	9	193
COMMAND: SOUTHEAST ARC																							
RE-FY83Q	1004	2191	399	555	0	1021	724	228	53	402	0	180	0	0	390	1403	3767	952	6122	53	582	635	7147
RE-FY83Q	1004	2191	399	555	0	1021	724	228	53	402	0	180	0	0	390	1403	3767	952	6122	53	582	635	7147

RUN CHART



BLOCK DIAGRAM

