

AD-A124 056

193188 MLRS MISSILE NUMBERS BN-188 BN-154 BN-184 ROUND
NUMBERS V-375/PQ-1. (U) ARMY ELECTRONICS RESEARCH AND
DEVELOPMENT COMMAND WSMR NM ATH. D C KELLER DEC 82
ERADCOM/ASL-DR-1278 F/G 4/2

1/1

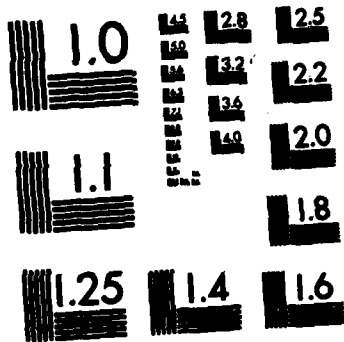
UNCLASSIFIED

NL

END

FILED

DTIC



MICROCOPY RESOLUTION TEST CHART
NATIONAL BUREAU OF STANDARDS-1963-A

12

Dec 82
DR 1278

AD

APPROVED FOR PUBLIC RELEASE; DISTRIBUTION UNLIMITED

ADA 124 056

METEOROLOGICAL DATA REPORT

19318B MLRS
Missile Numbers BN-188, BN-154, BN-184
Round Numbers V-375/PQ-100, V-376/PQ-101, V-377/PQ-102
3 December 1982

by

DONALD C. KELLER
Program Support Coordinator
Phone Number (505) 679-9568
AVN Number 349-9568

ATMOSPHERIC SCIENCES LABORATORY
WHITE SANDS MISSILE RANGE, NEW MEXICO

DTIC
ELECTE
S FEB 3 1983 D
D

DTIC FILE COPY

E COM I

UNITED STATES ARMY ELECTRONICS COMMAND

83 02 03 011

DISPOSITION INSTRUCTIONS

Destroy this report when it is no longer needed. Do not return to the originator.

DISCLAIMER

The findings in this report are not to be construed as an official Department of the Army position, unless so designated by other authorized documents.

The citation of trade names and names of manufacturers in this report is not to be construed as official Government indorsement or approval of commercial products or services referenced herein.

UNCLASSIFIED

SECURITY CLASSIFICATION OF THIS PAGE (When Data Entered)

REPORT DOCUMENTATION PAGE		READ INSTRUCTIONS BEFORE COMPLETING FORM
1. REPORT NUMBER DR 1278	2. GOVT ACCESSION NO.	3. RECIPIENT'S CATALOG NUMBER
4. TITLE (and Subtitle) 19318B MLRS Missile Numbers BN-188, BN-154, BN-184 Round Numbers V-375/PQ-100, V-376/PQ-101, V-377/PQ-102	5. TYPE OF REPORT & PERIOD COVERED	
	6. PERFORMING ORG. REPORT NUMBER	
7. AUTHOR(s) White Sands Meteorological Team	8. CONTRACT OR GRANT NUMBER(s) DA Task 1F665702D127-02	
9. PERFORMING ORGANIZATION NAME AND ADDRESS	10. PROGRAM ELEMENT, PROJECT, TASK AREA & WORK UNIT NUMBERS	
11. CONTROLLING OFFICE NAME AND ADDRESS US Army Electronics Research & Development Cmd Atmospheric Sciences Laboratory White Sands Missile Range, New Mexico 88002	12. REPORT DATE December 1982	
	13. NUMBER OF PAGES 20	
14. MONITORING AGENCY NAME & ADDRESS (if different from Controlling Office) US Army Electronics Research and Development Cmd Adelphi, MD 20783	15. SECURITY CLASS. (of this report) UNCLASSIFIED	
	15a. DECLASSIFICATION/DOWNGRADING SCHEDULE	
16. DISTRIBUTION STATEMENT (of this Report) <div style="border: 1px solid black; padding: 5px; text-align: center;">DISTRIBUTION STATEMENT A Approved for public release; Distribution Unlimited</div>		
17. DISTRIBUTION STATEMENT (of the abstract entered in Block 20, if different from Report) Approved for public release; distribution unlimited.		
18. SUPPLEMENTARY NOTES		
19. KEY WORDS (Continue on reverse side if necessary and identify by block number)		
20. ABSTRACT (Continue on reverse side if necessary and identify by block number) Meteorological data gathered for the launching of the 19318B MLRS, Missile Numbers BN-188, BN-154, BN-184, Round Numbers V-375/PQ-100, V-376/PQ-101, V-377/PQ-102 are presented in tabular form.		

CONTENTS

PAGE

INTRODUCTION----- 1

DISCUSSION----- 1

GENERAL AREA MAP----- 2

LAUNCH AREA DIAGRAM----- 3

TABLES:

1. Surface Observations taken at 1610 MST at LC-33----- 4
2. Anemometer-Measured Wind Speed and Direction, LC-33 Fixed Pole, taken at 1610 MST----- 5
3. Anemometer-Measured Wind Speed and Direction, Tower Levels 1, 2, 3, and 4, taken at 1610 MST----- 5
4. Launch and Impact Pilot-Balloon Measured Wind Data----- 6
5. Aiming and T-Time Computer Met Messages----- 7
6. LC-37 Significant Level Data at 1400 MST----- 8
7. LC-37 Upper Air Data at 1400 MST----- 9
8. LC-37 Mandatory Levels at 1400 MST----- 10
9. WSD Significant Level Data at 1430 MST----- 11
10. WSD Upper Air Data at 1430 MST----- 12
11. WSD Mandatory Levels at 1430 MST----- 13
12. WSD Significant Level Data at 1600 MST----- 14
13. WSD Upper Air Data at 1600 MST----- 15
14. WSD Mandatory Levels at 1600 MST----- 16

Accession For	
NTIS GRA&I	<input checked="" type="checkbox"/>
DTIC TAB	<input type="checkbox"/>
Unannounced	<input type="checkbox"/>
Justification	
By _____	
Distribution/	
Availability Codes	
Dist	Avail and/or Special
A	



INTRODUCTION

19318B MLRS, Missile Numbers BN-188, BN-154 and BN-184, Round Numbers V-375/PQ-100, V-376/PQ-101 and V-377-PQ-102, were launched from LC-33, White Sands Missile Range (WSMR), New Mexico, at 1610:09, 1610:14 and 1610:18 MST, 3 Dec 82. The scheduled launch times were 1600:00, 1600:04.5 and 1600:09 MST.

DISCUSSION

Meteorological data were recorded and reduced by the White Sands Meteorological Team, Atmospheric Sciences Laboratory (ASL), White Sands Missile Range, New Mexico. The data were obtained by the following methods:

1. Observations

a. Surface

(1) Standard surface observations to include pressure, temperature ($^{\circ}\text{C}$), relative humidity, dew point ($^{\circ}\text{C}$), density (gm/m^3), wind direction and speed, and cloud cover were made at the LC-33 Met Site at T-0 Minutes.

(2) Anemometer data were provided from existing pole-mounted and tower-mounted anemometers at LC-33. Monitor of wind speed and direction from one anemometer was also provided in the launch control room.

b. Upper Air

(1) Low level wind data were obtained from Pilot-balloon observations at:

SITE AND ALTITUDE

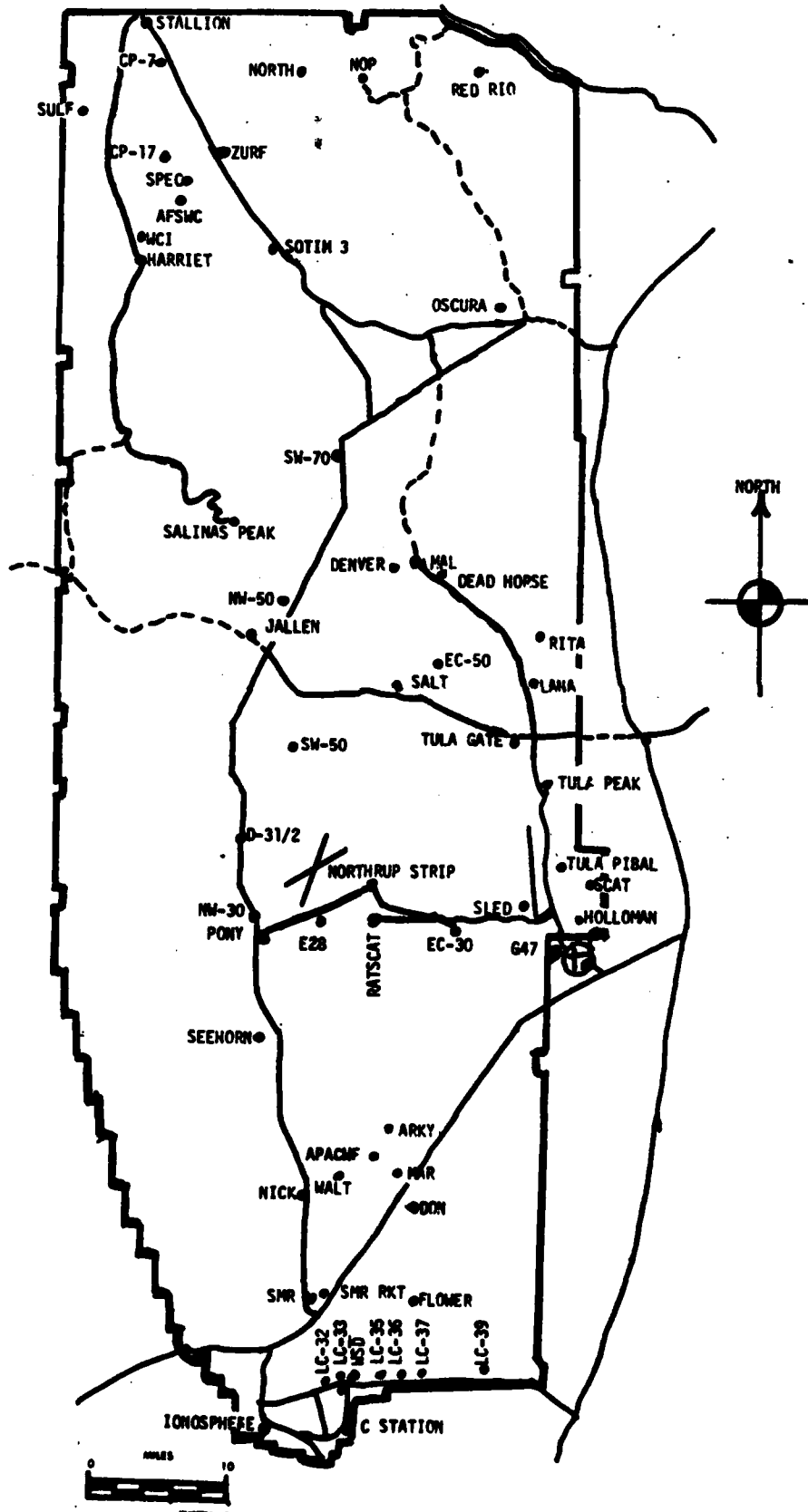
WSD 2km
DON 2km

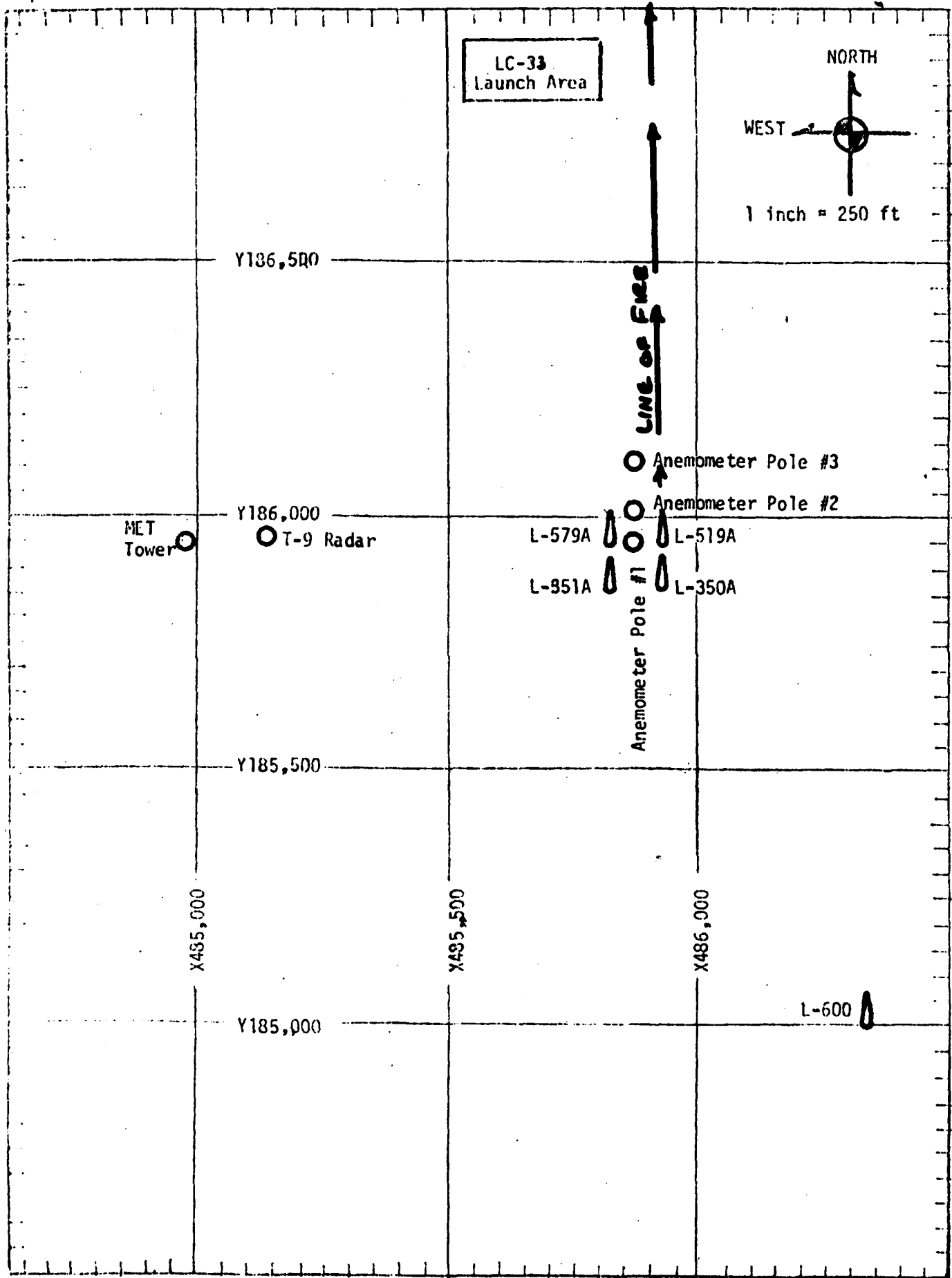
(2) Air structure data (rawinsonde) were collected at the following Met Sites.

SITE AND TIME

LC-37 1400 MST
WSD 1430 MST
WSD 1600 MST

WSMR METEOROLOGICAL SITES





LC-33
Launch Area

NORTH
WEST
1 inch = 250 ft

Y186,500

LINE OF FIRE

Anemometer Pole #3

Anemometer Pole #2

MET
Tower

T-9 Radar

L-579A

L-519A

L-351A

L-350A

Anemometer Pole #1

Y185,500

X485,000

X485,500

X486,000

Y185,000

L-600

PROJECT SURFACE OBSERVATION

TABLE 1

STATION LC-33 E & A

DATE 3 Dec 82

X=484,982.64 Y=185,957.73 H=3995.00

TIME M S I	PRESSURE mbs	TEMPERATURE OF °C	DEW POINT OF °C	RELATIVE HUMIDITY %	DENSITY gm/m ³	WIND		VISIBIL- ITY
						DIRECTION degs Tn	SPEED kts	
1610	880.0	8.2	-5.4	38	1088	025	07	50

OBSTRUCTIONS TO VISIBILITY	CLOUDS						REMARKS
	1st LAYER		2nd LAYER		3rd LAYER		
	AMT	TYPE	AMT	TYPE	AMT	TYPE	
	1	CU	6,000				

PSYCHROMETRIC COMPUTATION

TIME:	1610
DRY BULB TEMP.	8.2
WET BULB TEMP.	2.5
WET BULB DEPR.	5.7
DEW POINT	-5.4
RELATIVE HUMID.	38

TABLE 2 LC-33 FIXED POLE ANEMOMETER MEASURED WINDS

POLE #1 X485,874.29 Y185,958.90 H4018.74 38.7 ft. AGL			POLE #2 X485,874.29 Y186,012.00 H4033.57 53.0 ft. AGL			POLE #3 X485,877.29 Y186,116.06 H4063.92 83.6 ft. AGL		
T-TIME SEC	DIR DEG	SPEED KNOTS	T-TIME SEC	DIR DEG	SPEED KNOTS	T-TIME SEC	DIR DEG	SPEED KNOTS
T-30	020	07	T-30	013	06	T-30	015	08
T-20	020	06	T-20	013	06	T-20	015	07
T-10	025	06	T-10	012	05	T-10	015	07
T0.0	025	06	T0.0	017	05	T0.0	015	07
T+10	025	09	T+10	005	05	T+10	006	10

TABLE 3 LC-33 METEOROLOGICAL TOWER ANEMOMETER MEASURED WINDS (202 FT TOWER)

LEVEL #1, 12 FEET X484,982.64, Y185,057.73, H3983.00 (base)			LEVEL #2, 62 FEET X484,982.64, Y185,057.73, H3983.00 (base)		
T-TIME SEC	DIR DEG	SPEED KNOTS	T-TIME SEC	DIR DEG	SPEED KNOTS
T-30	016	05	T-30	004	06
T-20	018	05	T-20	004	06
T-10	024	05	T-10	010	06
T0.0	027	07	T0.0	012	06
T+10	023	06	T+10	013	07

LEVEL #3, 102 FEET X484,982.64, Y185,057.73, H3983.00 (base)			LEVEL #4, 202 FEET X484,982.64, Y185,057.73, H3983.00 (base)		
T-TIME SEC	DIR DEG	SPEED KNOTS	T-TIME SEC	DIR DEG	SPEED KNOTS
T-30	014	06	T-30	008	07
T-20	015	05	T-20	009	08
T-10	022	06	T-10	014	07
T0.0	022	07	T0.0	015	08
T+10	026	07	T+10	008	08

* POLE #1 DIRS ARE ESTIMATED.

TABLE 4

T-TIME PILOT-BALLOON MEASURED WIND DATA

DATE 3 Dec 82

SITE: WSD
 TIME: 1610 MST
 WSTM COORDINATES:
 X= 488,852.29
 Y= 184,982.45
 H= 3,993.75

SITE: DON
 TIME 1610 MST
 WSTM COORDINATES:
 X= 511,988.37
 Y= 247,396.36
 H= 3,996.83

LAYER MIDPOINT METERS AGL	DIRECTION DEGREES	SPEED KNOTS
SURFACE	350	08
150	010	08
210	360	07
270	005	10
330	356	08
390	360	08
500	348	11
650	318	09
800	314	11
950	298	09
1150	320	13
1350	326	13
1550	343	17
1750	349	16
2000	357	19

Data obtained from a Nike Hercules
 Radar Tracked Pilot-Balloon observation.

LAYER MIDPOINT METERS AGL	DIRECTION DEGREES	SPEED KNOTS
SURFACE		CALM
150	004	09
210	360	11
270	351	12
330	344	13
390	340	13
500	334	14
650	344	15
800	345	15
950	348	15
1150	357	12
1350	351	09
1550	343	10
1750	349	13
2000	005	23

Data obtained from a Single Theodolite
 Tracked Pilot-Balloon observation.

TABLE 5

AIMING AND T-TIME COMPUTER MET MESSAGES

03 Dec 82

LC-37 1400 MST	WSD 1430 MST
METCM1324063	METMC1324064
032000124878	032050122880
00587008 28290878	00587012 28350880
01610013 28090867	01628016 28280869
02614018 27860841	02623018 27970843
03600009 27490801	03615016 27630803
04579008 27030752	04622010 27220755
05634015 26740706	05614015 26810708
06004021 26440662	06633020 26390664
07016031 26110621	07004028 26050623
08032045 26050581	08030038 25890583
09023054 25930544	09025051 25860546

WSD 1600 MST
 METCM1324064
 032200122880
 00622008 28230880
 01027007 28190869
 02639010 28000843
 03571010 27640803
 04569013 27190754
 05619017 26750708
 06008025 26470664
 07019036 26370623
 08025045 26140583
 09019055 25910546

STATION ALTITUDE: 4051.37 FEET MSL
 3 DEC. 62
 ASCENSION NO. 118

SIGNIFICANT LEVEL DATA
 3370180118
 LC-37

GEODETIC COORDINATES
 32.40175 LAT DEG
 106.31232 LON DEG

TABLE 6

PRESSURE MILLIBARS	GEOMETRIC ALTITUDE MSL FEET	TEMPERATURE		REL. HUM. PERCENT
		AIR DEGREES	DEWPOINT CENTIGRADE	
877.9	4051.4	9.3	-5.7	34.0
875.7	4119.5	7.8	-5.6	38.0
850.0	4922.8	5.7	-6.2	42.0
791.9	6807.2	.5	-10.9	42.0
738.4	8634.2	-4.5	-14.6	45.0
700.0	10011.7	-6.2	-19.1	35.0
657.5	11612.7	-9.3	-21.3	37.0
624.6	12909.4	-12.5	-22.2	44.0
604.5	13730.7	-12.5	-21.9	45.0
586.9	14471.9	-13.1	-20.8	52.0
559.4	15675.6	-12.5	-26.4	30.0
500.0	18462.5	-18.4	-33.5	25.0

STATION ALTITUDE 4051.37 FEET MSL
 3 DEC. 82 1400 HRS MST
 ASCENSION NO. 118

UPPER AIR DATA
 3570180118
 LC-37
 TABLE 7

GEODETIC COORDINATES
 32.40175 LAT DEG
 106.31232 LON DEG

GEOMETRIC ALTITUDE MSL FEET	PRESSURE MILLIBARS	TEMPERATURE AIR DEGREES	TEMPERATURE DEWPOINT DEGREES	REL. HUM. PERCENT	DENSITY GM/CUBIC METER	SPEED OF SOUND KNOTS	DIRECTION DEGREES(TN)	WIND DATA SPEED KNOTS	INDEX OF REFRACTION
4051.4	877.9	9.3	-5.7	34.0	1080.9	655.3	330.0	8.0	1.000260
4500.0	863.4	6.8	-5.9	39.9	1072.6	652.4	336.1	9.8	1.000258
5000.0	847.5	5.5	-6.4	42.0	1057.6	650.9	340.6	12.0	1.000254
5500.0	831.8	4.1	-7.6	42.0	1043.5	649.2	343.7	14.2	1.000249
6000.0	815.3	2.7	-8.9	42.0	1029.3	647.5	343.4	13.4	1.000245
6500.0	801.1	1.3	-10.1	42.0	1015.3	645.9	339.3	10.0	1.000240
7000.0	786.1	-0.0	-11.3	42.3	1001.4	644.2	330.6	7.9	1.000236
7500.0	771.2	-1.4	-12.3	43.1	987.4	642.6	319.7	6.8	1.000232
8000.0	756.5	-2.8	-13.3	44.0	973.7	640.9	326.7	7.8	1.000228
8500.0	742.2	-4.1	-14.3	44.8	960.1	639.3	336.3	9.0	1.000224
9000.0	728.0	-5.0	-15.7	42.3	944.7	638.3	346.8	10.8	1.000220
9500.0	714.0	-5.6	-17.4	38.7	928.8	637.5	354.1	13.2	1.000215
10000.0	700.3	-6.2	-19.1	35.1	913.2	636.8	358.9	15.7	1.000211
10500.0	686.8	-7.1	-19.8	35.6	898.8	635.6	1.4	18.3	1.000207
11000.0	673.5	-8.1	-20.4	36.2	884.6	634.4	3.5	20.4	1.000204
11500.0	660.4	-9.1	-21.1	36.9	870.7	633.3	5.8	21.6	1.000200
12000.0	647.5	-10.3	-21.5	39.1	857.5	631.9	7.8	23.7	1.000197
12500.0	634.8	-11.5	-21.8	41.8	844.6	630.4	9.3	26.9	1.000194
13000.0	622.4	-12.5	-22.2	44.1	831.3	629.2	10.4	30.0	1.000191
13500.0	610.1	-12.5	-22.0	44.7	814.9	629.2	11.3	33.2	1.000187
14000.0	598.0	-12.7	-21.5	47.5	799.4	628.9	13.5	37.1	1.000184
14500.0	586.2	-13.1	-20.9	51.5	784.7	628.5	15.5	41.4	1.000181
15000.0	574.7	-12.8	-22.9	42.3	768.8	628.8	15.5	47.2	1.000177
15500.0	563.3	-12.6	-25.4	33.2	752.8	629.0	14.8	51.1	1.000172
16000.0	552.1	-13.2	-27.2	29.4	739.6	628.3	13.3	52.7	1.000168
16500.0	541.1	-14.2	-28.5	28.5	727.8	627.0	11.9	53.7	1.000165
17000.0	530.3	-15.3	-29.8	27.6	716.3	625.7	10.5	54.6	1.000162
17500.0	519.8	-16.4	-31.0	26.7	704.9	624.4			1.000160
18000.0	509.4	-17.4	-32.3	25.8	693.7	623.1			1.000157

STATION ALTITUDE 4951.37 FEET MSL
 3 DFC. 82
 ASCENSION NO. 118

MANDATORY LEVELS
 3370180118
 LC-37
 TABLE 8

GEODETIC COORDINATES
 32.40175 LAT DEG
 106.31232 LONG DEG

PRESSURE GEOPOTENTIAL		TEMPERATURE		REL. HUM.	WIND DATA	
MILLIBARS	FEET	AIR	DEWPOINT	PERCENT	DIRECTION	SPEED
		DEGREES	CENTIGRADE		(TN)	KNOTS
850.0	4919.	5.7	-6.2	42.	340.0	11.6
800.0	6533.	1.2	-10.2	42.	338.9	9.7
750.0	8223.	-3.4	-13.8	44.	329.3	8.3
700.0	10002.	-6.2	-19.1	35.	359.0	15.8
650.0	11891.	-10.0	-21.4	39.	7.4	23.1
600.0	13902.	-12.7	-21.6	47.	13.0	36.4
550.0	16080.	-13.4	-27.5	29.	13.0	53.0
500.0	18437.	-18.4	-33.5	25.		

STATION ALTITUDE 3989.00 FEET MSL
 3 DEC. 82 1430 HRS MST
 ASCENSION NO. 598

SIGNIFICANT LEVEL DATA
 3370020598
 WHITE SANDS
 TABLE 9

GEODETIC COORDINATES
 32.40043 LAT. DEG
 106.37033 LON DEG

PRESSURE MILLIBARS	GEOMETRIC ALTITUDE MSL FEET	TEMPERATURE AIR DEGREES CENTIGRADE	REL. HUM. PERCENT
879.9	3989.0	9.7	40.0
850.0	4925.9	6.5	34.0
700.0	10038.6	-6.0	29.0
635.4	12500.4	-12.3	43.0
582.0	14696.1	-14.7	52.0
579.4	14807.6	-14.8	54.0
555.6	15853.6	-13.8	23.0
500.0	18467.5	-17.8	18.0

UPPER AIR DATA
 3370020598
 WHITE SANDS
 TABLE 10

STATION ALTITUDE 3989.00 FEET MSL
 3 DEC. 82
 1430 HRS MST
 ASCENSION NO. 598

GEODETIC COORDINATES
 32.40043 LAT DEG
 106.37033 LON DEG

GEOMETRIC ALTITUDE MSL FEET	PRESSURE MILLIBARS	TEMPERATURE		REL. HUM. PERCENT	DENSITY GM/CUBIC METER	SPEED OF SOUND KNOTS	WIND DATA		INJEX OF REFRACTION
		AIR DEGREES	DEWPOINT CENTIGRADE				DIRECTION EGRES(TN)	SPEED KNOTS	
3989.0	879.9	9.7	-3.2	40.0	1081.5	655.9	330.0	12.0	1.000264
4000.0	879.5	9.7	-3.3	39.9	1081.2	655.8	330.1	12.0	1.000264
4500.0	863.5	8.0	-5.9	36.7	1068.2	653.7	333.3	12.0	1.000257
5000.0	847.6	6.3	-8.4	33.9	1055.0	651.7	336.5	12.1	1.000251
5500.0	831.7	5.1	-9.7	33.4	1039.9	650.3	339.7	12.2	1.000246
6000.0	816.0	3.9	-10.9	32.9	1024.9	648.8	342.8	12.3	1.000241
6500.0	800.7	2.7	-12.2	32.5	1010.2	647.3	345.9	12.4	1.000237
7000.0	785.6	1.4	-13.4	32.0	995.7	645.9	347.9	12.6	1.000233
7500.0	770.8	.2	-14.7	31.5	981.4	644.4	348.3	12.9	1.000229
8000.0	756.3	-1.0	-16.0	31.0	967.4	642.9	349.1	13.1	1.000224
8500.0	742.1	-2.2	-17.2	30.5	953.5	641.5	349.5	13.9	1.000221
9000.0	728.2	-3.5	-18.5	30.0	939.9	640.0	349.7	15.1	1.000217
9500.0	714.5	-4.7	-19.7	29.5	926.5	638.5	349.8	16.3	1.000213
10000.0	701.0	-5.9	-21.0	29.0	913.3	637.1	350.1	17.5	1.000209
10500.0	687.4	-7.2	-21.2	31.6	899.8	635.5	351.5	18.8	1.000206
11000.0	674.0	-8.5	-21.3	34.5	886.6	634.0	352.6	20.2	1.000203
11500.0	660.9	-9.7	-21.6	37.3	873.5	632.5	353.7	21.6	1.000201
12000.0	648.0	-11.0	-21.9	40.2	860.7	630.9	357.0	23.2	1.000198
12500.0	635.4	-12.3	-22.3	43.0	848.1	629.4	1.4	25.2	1.000195
13000.0	622.8	-12.8	-22.2	45.0	833.0	628.7	5.1	27.3	1.000191
13500.0	610.5	-13.4	-22.2	47.1	818.2	628.1	8.3	29.6	1.000188
14000.0	598.4	-13.9	-22.3	49.1	803.7	627.4	11.3	33.0	1.000185
14500.0	586.6	-14.5	-22.3	51.2	789.5	626.8	13.7	36.5	1.000182
15000.0	574.9	-14.6	-23.1	48.3	774.2	626.6	15.2	40.0	1.000178
15500.0	563.5	-14.1	-26.7	33.5	757.6	627.1	15.0	43.2	1.000173
16000.0	552.3	-14.0	-30.7	22.7	742.3	627.2	14.8	46.4	1.000168
16500.0	541.3	-14.8	-31.8	21.8	729.7	626.3	14.8	49.5	1.000165
17000.0	530.5	-15.6	-32.9	20.8	717.2	625.3	14.8	49.5	1.000162
17500.0	519.9	-16.3	-34.0	19.9	705.0	624.4	14.8	49.5	1.000159
18000.0	509.5	-17.1	-35.2	18.9	693.0	623.5	14.8	49.5	1.000156

STATION ALTITUDE 3989.00 FEET MSL
 3 DEC. 82 1430 HRS MST
 ASCENSION NO. 598

MANDATORY LEVELS
 3370020598
 WHITE SANDS
 TABLE 11

GEODETIC COORDINATES
 32.40043 LAT DEG
 106.37033 LON DEG

PRESSURE MILLIBARS	GEOPOTENTIAL FEET	TEMPERATURE AIR DEGREES CENTIGRADE	REL. HUM. PERCENT	WIND DATA	
				DIRECTION DEGREES(TN)	SPEED KNOTS
850.0	4922.	6.5	34.	336.0	12.1
800.0	6542.	2.6	32.	346.1	12.4
750.0	8241.	-1.6	31.	349.4	13.2
700.0	10029.	-6.0	29.	350.2	17.6
650.0	11915.	-10.8	40.	356.2	22.9
600.0	13920.	-13.9	49.	10.9	32.5
550.0	16086.	-14.2	23.	14.8	47.0
500.0	18442.	-17.8	18.		

STATION ALTITUDE 3989.00 FEET MSL
 3 DEC. 82 1600 HRS MST
 ASCENSION NO. 599

SIGNIFICANT LEVEL DATA
 3370020599
 WHITE SANDS
 TABLE 12

GEODETIC COORDINATES
 32.40043 LAT UEG
 106.37033 LON DEG

PRESSURE MILLIBARS	GEOMETRIC ALTITUDE MSL FEET	TEMPERATURE AIR DEGREES CENTIGRADE	REL. HUM. PERCENT
879.5	3989.0	8.6	43.0
866.7	4386.8	8.4	27.0
850.0	4913.1	7.0	27.0
700.0	10023.3	-6.7	33.0
666.7	11267.5	-9.5	37.0
650.8	11382.1	-8.0	33.0
584.6	14602.1	-11.8	21.0
532.7	16928.1	-15.0	16.0
500.0	18494.9	-17.8	17.0

UPPER AIR DATA
 3370020599
 WHITE SANDS
 TABLE 13

STATION ALTITUDE 3989.70 FEET MSL
 3 DEC. 82 1600 HRS MST
 ASCENSION NO. 599

GEODETIC COORDINATES
 32.40043 LAT DEG
 106.37033 LON DEG

GEOMETRIC ALTITUDE MSL FEET	PRESSURE MILLIBARS	AIR TEMPERATURE DEGREES	TEMPERATURE DEWPOINT CENTIGRADE	REL. HUM. PERCENT	DENSITY GM/CUBIC METER	SPEED OF SOUND KNOTS	WIND DIRECTION (DEGREES(TN))	WIND SPEED KNOTS	INDEX OF REFRACTION
3989.0	879.5	8.6	-3.3	43.0	1085.2	654.6	350.0	8.0	1.000265
4000.0	879.1	8.6	-3.4	42.6	1084.8	654.6	349.9	8.0	1.000264
4500.0	863.1	8.1	-9.7	27.0	1067.7	653.8	343.6	8.3	1.000252
5000.0	847.2	6.8	-10.8	27.1	1053.1	652.2	337.8	8.7	1.000248
5500.0	831.3	5.4	-11.7	27.7	1038.3	650.6	332.5	9.2	1.000243
6000.0	815.6	4.1	-12.6	28.3	1023.8	649.0	327.9	9.7	1.000239
6500.0	800.3	2.7	-13.5	28.9	1009.5	647.4	323.7	10.3	1.000236
7000.0	785.2	1.4	-14.5	29.5	995.3	645.8	320.0	11.0	1.000232
7500.0	770.4	.1	-15.4	30.0	981.5	644.2	322.6	11.8	1.000228
8000.0	755.9	-1.3	-16.3	30.6	967.8	642.6	326.5	12.7	1.000224
8500.0	741.7	-2.6	-17.3	31.2	954.3	641.0	329.7	13.7	1.000221
9000.0	727.8	-4.0	-18.2	31.8	941.1	639.4	326.8	14.8	1.000217
9500.0	714.1	-5.3	-19.2	32.4	928.0	637.8	344.3	16.2	1.000214
10000.0	700.6	-6.6	-20.2	33.0	915.2	636.2	350.5	17.8	1.000210
10500.0	687.0	-7.8	-20.7	34.5	901.3	634.8	356.4	20.3	1.000207
11000.0	673.7	-8.9	-21.2	36.1	887.6	633.5	1.1	23.2	1.000204
11500.0	660.6	-8.9	-21.4	35.5	870.5	633.4	4.8	26.2	1.000200
12000.0	647.8	-8.2	-21.7	32.5	851.1	634.4	7.4	29.4	1.000195
12500.0	635.1	-8.9	-23.1	30.3	836.7	633.5	9.3	32.7	1.000192
13000.0	622.7	-9.6	-24.6	28.1	822.6	632.7	10.8	36.1	1.000188
13500.0	610.6	-10.3	-26.1	25.9	808.7	631.8	12.0	39.2	1.000184
14000.0	598.6	-11.0	-27.7	23.7	795.1	630.9	12.4	41.3	1.000181
14500.0	587.0	-11.7	-29.3	21.5	781.7	630.1	12.9	43.5	1.000177
15000.0	575.4	-12.3	-30.5	20.1	768.3	629.2	12.9	45.8	1.000174
15500.0	564.0	-13.0	-31.7	19.1	755.1	628.4	12.0	48.5	1.000171
16000.0	552.8	-13.7	-32.9	18.0	742.2	627.6	11.1	51.2	1.000167
16500.0	541.9	-14.4	-34.1	16.9	729.4	626.7			1.000164
17000.0	531.2	-15.1	-35.2	16.0	717.0	625.8			1.000161
17500.0	520.5	-16.0	-35.7	16.4	705.1	624.8			1.000159
18000.0	510.1	-16.9	-36.3	16.7	693.4	623.7			1.000156

MANDATORY LEVELS
 3370020599
 WHITE SANDS
 TABLE 14

STATION ALTITUDE 3989.00 FEET MSL
 3 JULC. 82
 ASCENSION NO. 599
 1600 HRS MST

GEODETIC COORDINATES
 32.40043 LAT DEG
 106.37033 LONG DEG

PRESSURE GEOPOTENTIAL		TEMPERATURE		REL. HUM.		WIND DATA	
MILLIBARS	FEET	AIR DEGREES	DEWPOINT CENTIGRADE	PERCENT	DIRECTION DEGREES(TN)	SPEED KNOTS	
850.0	4910.	7.0	-10.7	27.	338.8	8.6	
800.0	6531.	2.7	-13.6	29.	323.4	10.4	
750.0	8229.	-1.8	-16.7	31.	328.1	13.2	
700.0	10014.	-6.7	-20.2	33.	350.7	17.8	
650.0	11901.	-8.0	-21.5	33.	7.0	28.8	
600.0	13930.	-10.9	-27.5	24.	12.4	41.1	
550.0	16111.	-13.9	-33.2	18.	10.9	51.8	
500.0	18469.	-17.8	-36.8	17.			