

AD-A126 550

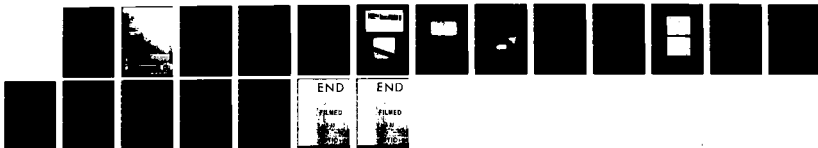
A FIBER-OPTIC LINK FOR USE WITH MICROWAVE FIELD SENSORS
(U) HARRY DIAMOND LABS ADELPHI MD J C BLACKBURN ET AL.
MAR 83 HDL-TM-83-2

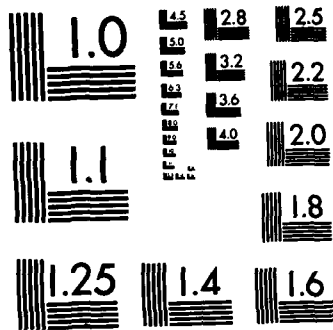
1/1

UNCLASSIFIED

F/G 14/2

NL





MICROCOPY RESOLUTION TEST CHART
NATIONAL BUREAU OF STANDARDS-1963-A

ADA 126550

UNCLASSIFIED

SECURITY CLASSIFICATION OF THIS PAGE (When Data Entered)

REPORT DOCUMENTATION PAGE		READ INSTRUCTIONS BEFORE COMPLETING FORM
1. REPORT NUMBER HDL-TM-83-2	2. GOVT ACCESSION NO. AD-A126550	3. RECIPIENT'S CATALOG NUMBER
4. TITLE (and Subtitle) A Fiber-Optic Link for Use with Microwave Field Sensors	5. TYPE OF REPORT & PERIOD COVERED Technical Memorandum	
	6. PERFORMING ORG. REPORT NUMBER	
7. AUTHOR(s) James C. Blackburn Peter Li	8. CONTRACT OR GRANT NUMBER(s)	
9. PERFORMING ORGANIZATION NAME AND ADDRESS Harry Diamond Laboratories 2800 Powder Mill Road Adelphi, Maryland 20783	10. PROGRAM ELEMENT, PROJECT, TASK AREA & WORK UNIT NUMBERS Program Ele: 62120A DA No: 1L162120AH25	
11. CONTROLLING OFFICE NAME AND ADDRESS	12. REPORT DATE March 1983	
	13. NUMBER OF PAGES 19	
14. MONITORING AGENCY NAME & ADDRESS (if different from Controlling Office)	15. SECURITY CLASS. (of this report) UNCLASSIFIED	
	15a. DECLASSIFICATION/DOWNGRADING SCHEDULE	
16. DISTRIBUTION STATEMENT (of this Report) Approved for public release; distribution unlimited.		
17. DISTRIBUTION STATEMENT (of the abstract entered in Block 20, if different from Report)		
18. SUPPLEMENTARY NOTES Project No. E01228 DRCMS Code: 612120H250011		
19. KEY WORDS (Continue on reverse side if necessary and identify by block number) Fiber optics Optical signal link LED		
20. ABSTRACT (Continue on reverse side if necessary and identify by block number) ▶ The paper describes two types of compact fiber-optic links designed to provide dielectric isolation and noise immunity to the interconnection of subminiature microwave field-sensor probes and remotely located test equipment. The system measures the microwave signal levels leaking into partially shielded electronic packages. The fast-rise link (rise time <3 ns) is for use where the microwave irradiation source produces radar-like short pulses. The high-sensitivity link (input noise level <3 μV) is for use with laboratory 1-kHz modulated microwave sources. The transmitters are the size of a gum eraser, 1 1/4 × 1 1/4 × 2 3/8 in. The 15-V dc power for the transmitters is obtained either from the system under test or a small NiCd battery.		

DD FORM 1473

1 JAN 73

EDITION 1 NOV 63 IS OBSOLETE

UNCLASSIFIED

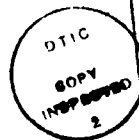
1 SECURITY CLASSIFICATION OF THIS PAGE (When Data Entered)

CONTENTS

	<u>Page</u>
1. INTRODUCTION	5
2. FAST-RESPONSE LINK	5
2.1 Transmitter	5
2.2 Receiver-Controller	10
3. HIGH-SENSITIVITY LINK	12
4. CONCLUDING REMARKS	13
DISTRIBUTION	15

FIGURES

1. Optical transmitter and receiver	6
2. Close-up view of optical transmitter	6
3. Photo of fast-response transmitter board	7
4. Schematic of fast-response transmitter	7
5. Photo of control/calibrator/regulator board for transmitter	8
6. Schematic of control/calibrator/regulator board	9
7. Schematic of optical receiver and control	10
8. Comparison of microwave detector signal as carried by coaxial cable and as carried by fast-response optical link	11
9. Schematic of high-sensitivity 1-kHz transmitter	12



Accession For	
NTIS GRA&I	<input checked="" type="checkbox"/>
DTIC TAB	<input type="checkbox"/>
Unannounced	<input type="checkbox"/>
Justification	
By	
Distribution/	
Availability Codes	
Avail and/or	
Special	
A	

1. INTRODUCTION

The fiber-optic signal links described here were built as a part of a system which measures microwave leakage into electronic packages with the purpose of determining those levels which produce upset or damage. The rf levels are sensed by a subminiature rf probe and crystal detector which is described elsewhere.* The extremely small size of this probe allows determination of the field in a highly localized area. Fiber optics was chosen as the method of connecting the probe's output to external equipment in order to avoid the undesirable effects of conducting cables. Conductors may pick up extraneous electromagnetic noise, especially in the case of small microwave levels at the detector, where the signal output may be measured in microvolts; conductors also alter the microwave fields in the vicinity where they penetrate the electronics enclosures.

2. FAST-RESPONSE LINK

The optical signal transmission system shown in figure 1 is intended for use with pulse-modulated microwave sources and was accordingly designed for a rise time < 3 ns and to have negligible droop at tens of microseconds. The unipolar signal level from the probe ranges from about 1 mV to several tens of millivolts, setting the sensitivity requirement for the fiber-optic transmitter. A prime requirement for the transmitter was that it be of small size so that both it and the detector could be placed in confined areas. Figure 2 shows that the transmitter is the size of a gum eraser, about $1\text{-}1/4 \times 1\text{-}1/4 \times 2\text{-}3/8$ in. The power supply is external, in many cases supplied by the equipment under test. There were no size requirements upon the receiver except that it fit a standard rack.

Two fibers can be seen leaving the transmitter (see fig. 2, right side of case). These attach to the two optical connectors on the front panel of the receiver. One of the fibers carries the analog signal from the transmitter to receiver and the other control signals from the controller (in the receiver box) to the transmitter. Both fibers are 100- μ m-core step-index fibers which are inexpensive, readily available, and compatible with all-plastic connectors. All-plastic connectors must be used because it is not permissible to have metallic connectors near the object being tested. Fiber "extension cords" up to thousands of feet in length may be inserted as desired.

2.1 Transmitter

The transmitter contains two circuit boards, each $1 \times 2\text{-}1/4$ in., mounted one on top of the other. One board amplifies the input signal and applies it to the light-emitting diode (LED), thus producing the analog optical signal. The second board contains a calibration pulse generator, a voltage regulator, a battery condition sensor, and a command receiver.

*R. V. Garver, Interim (6 month) Report for the Directed Microwave-Energy Vulnerability Program. To be published. HDL-PRL

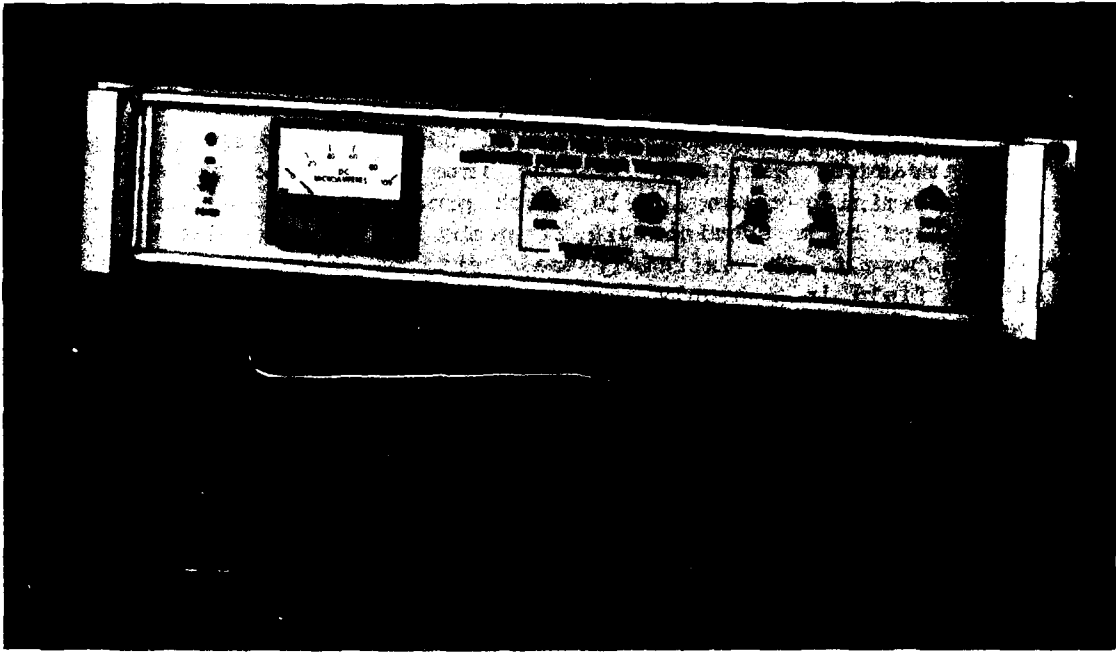


Figure 1. Optical transmitter and receiver.

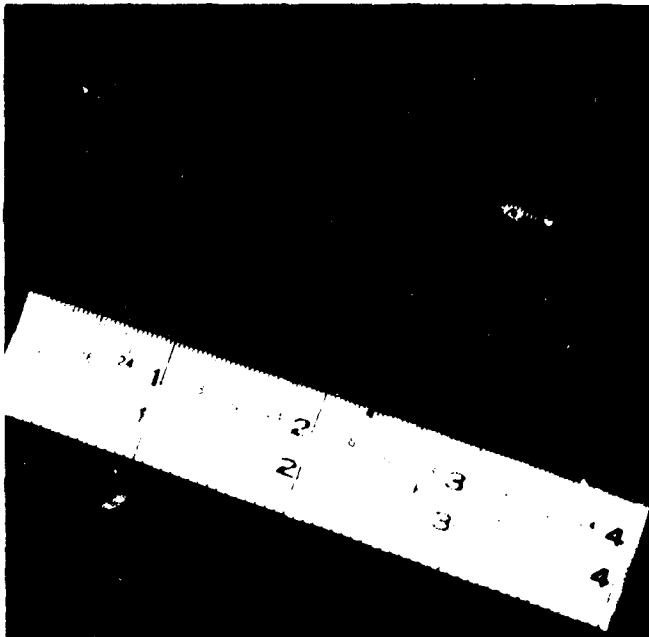


Figure 2. Close-up view of optical transmitter.

The transmitter board is shown in detail in figure 3 and its circuit in figure 4. An unusual construction is used, with the larger semiconductors fastened into shallow wells in the circuit board with their leads upward. Small components are soldered directly between these leads. The lead lengths are quite short and therefore rigid; the finished circuit is sturdy and accessible for repair or adjustment. This arrangement allowed a closer spacing of components and shorter lead lengths than seemed attainable with a more conventional printed circuit board. Silver epoxy is used to form a good ground between semiconductor cases and the ground plane of the board.



Figure 3. Photo of fast-response transmitter board. Large brass cylinder is LED, left of it is driver Q1. Amplifiers A1 and A2 are upper center.

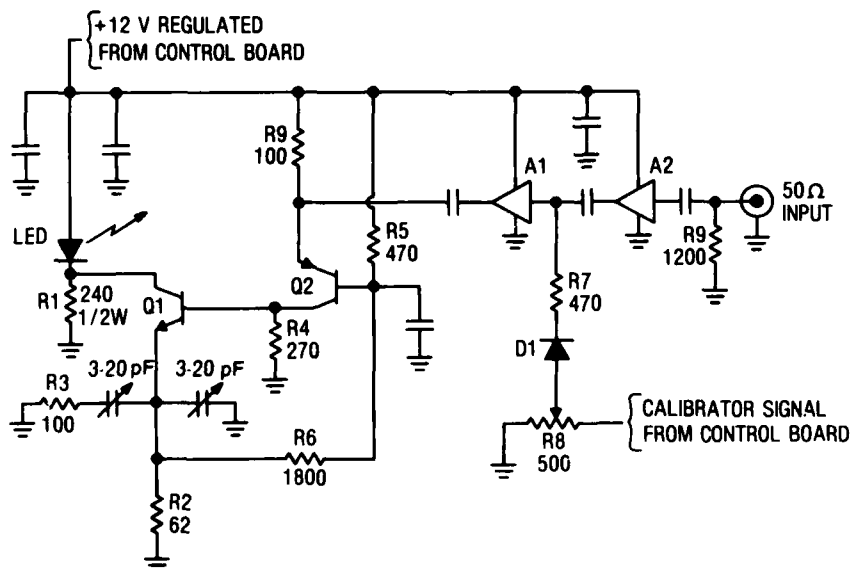


Figure 4. Schematic of fast-response transmitter.

A1=GPD 462; A2=GPD 461; Q1=2N5109; Q2=MM4049; LED=C86008
 ALL R'S 1/8W UNLESS INDICATED; ALL UNMARKED C'S 0.33 μ F CHIP TYPE;
 ALL UNMARKED DIODES 1N4148

The transmitter circuit is based on that of a previous system;¹ it is straightforward and requires little comment. R1 supplies a dc bias to the LED in addition to the steady-state current through Q1. D1, R7, and R8 provide the means of injecting the calibrator signal into the transmitter. When the calibrator is off, D1 is reverse biased and has little effect on the circuit. When the calibrator is operating, the diode is forward biased and conducts.

The controller board is shown in figure 5 and its circuitry in figure 6. IC3 section 1 (IC3-1) amplifies the output of photodetector Q4. If Q4 is dark, the output of IC3-1 is low and IC3 sections 2-4 are unbiased and therefore inoperative (and drawing no current). When Q4 is illuminated, sections 2-3 are biased on by the current through R7 and begin to function. Most important, IC5, Q4, and IC3-2 supply a regulated 12 V to the transmitter, thus causing it to operate. If Q4 is steadily illuminated, this is all that happens, and the transmitter turns on. If, however, the illumination falling on Q4 is periodically interrupted, C1 and R7 maintain the bias on IC3-2-4; yet D2, R6, and C2 provide a zero to IC3-4; this causes Q3 to turn on, thus enabling the calibration generator IC2. The frequency of the square wave produced by IC2 depends on the voltage applied to its pin 2. If the battery voltage sensed by IC3-3 is below normal, its output goes high and increases the repetition rate of IC2 to about five times its normal value; this signals the low-voltage condition to the user.

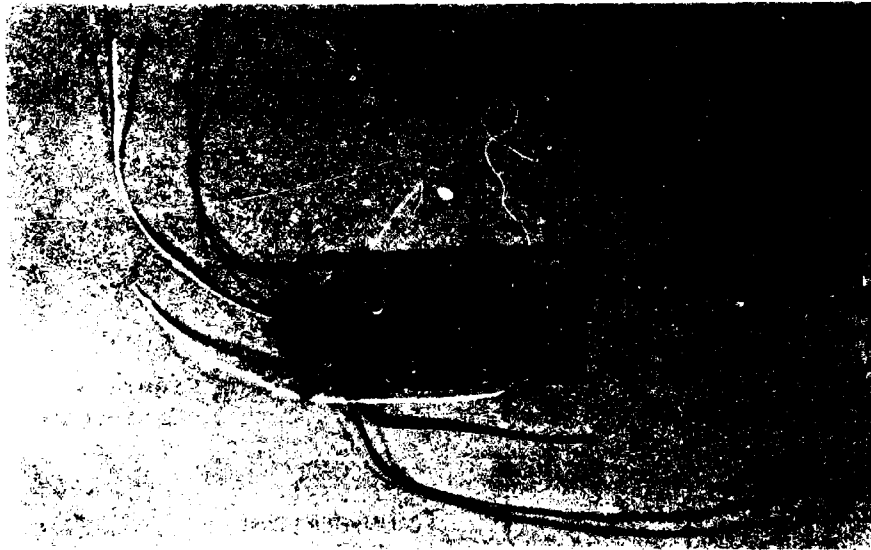


Figure 5. Photo of control/calibrator/regulator board for transmitter.

¹J. C. Blackburn and R. Martin, *A Versatile Fiber-Optic Signal Link for EMP Testing and General Laboratory Application*, Harry Diamond Laboratories, HDL-TM-80-5 (June 1980).

2.2 Receiver-Controller

Figure 7 shows the optical receiver circuitry. Q7, D1, IC8, and associated circuitry form a constant current source which causes the voltage on the avalanche photodiode (APD) to adjust to a value which provides a fixed current. This action compensates for both temperature effects on the APD and variations in the optical signal. Q6, IC6-1, and so on, form a voltage limiter, so that even in the absence of an optical signal the APD will not be driven to breakdown (self avalanche). A silicon diode, part of the detector module and connected between ground and module pin 8, corrects the voltage limit for ambient temperature. IC6-2 drives the indicating meter in proportion to the bias voltage on the APD; a higher reading indicates a lesser optical signal.

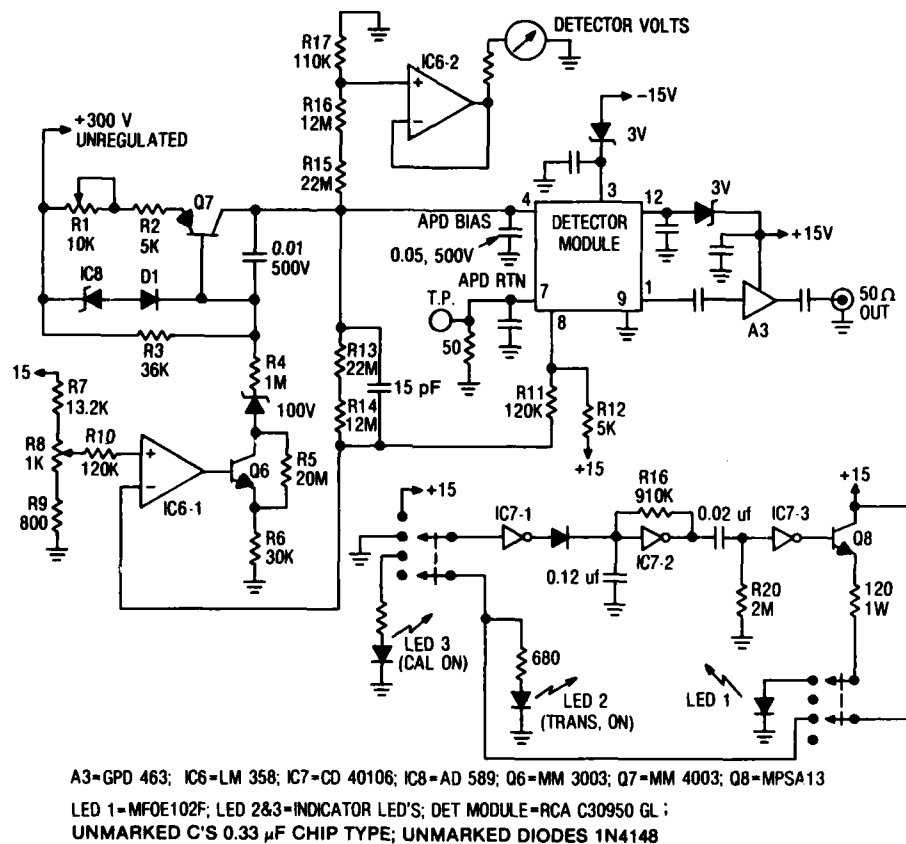


Figure 7. Schematic of optical receiver and control.

IC7-2 and associated components form a 10-Hz oscillator whose output is differentiated, inverted by IC7-3, and applied to Q8. Q8 drives the control signal LED (LED-1) with either a steady dc current (switch in lower position) or a waveform of 90 percent on, 10 percent off, with a pulse repetition rate of 10 Hz (switch in upper position). The steady current causes the remote transmitter to turn on; the pulsed current causes both turn-on and calibrator operation.

Figure 8 compares the microwave detector signal as transmitted by both coaxial cable and the optical link. The two waveforms match to well within 1 dB when the calibration of the optical link is taken into account.

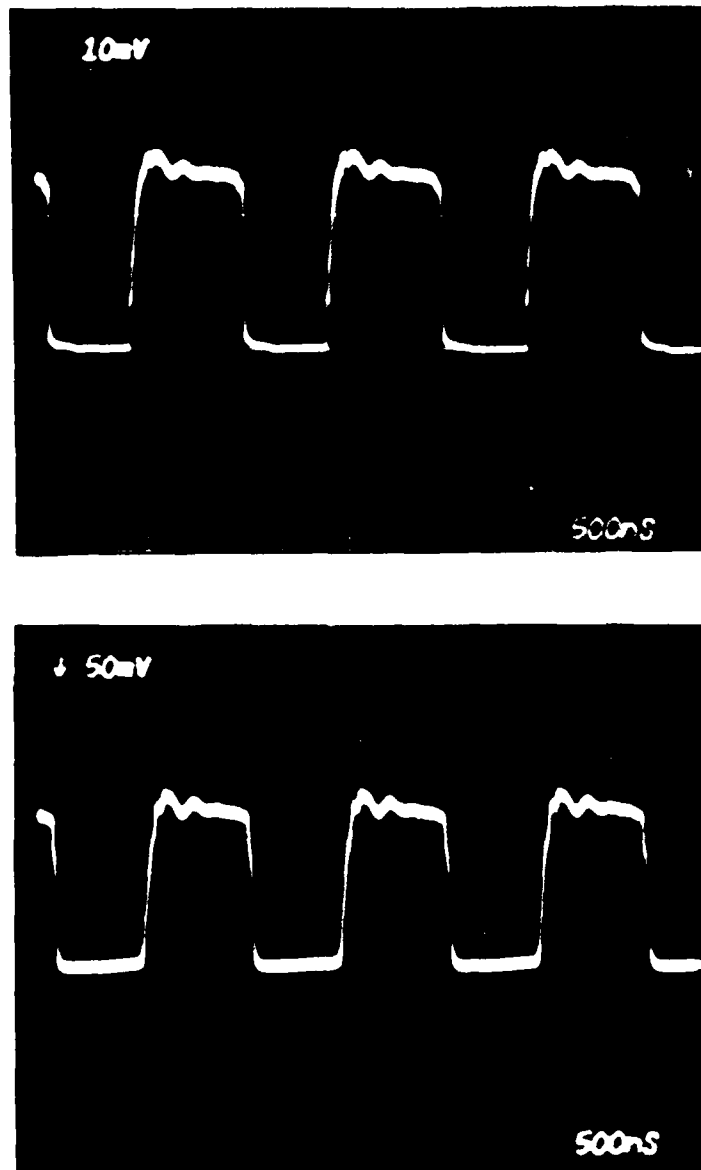


Figure 8. Comparison of microwave detector signal as carried by coaxial cable (top) and as carried by fast-response optical link (bottom). Test performed in arrangement where presence of conducting coaxial cable was noninterfering.

3. HIGH-SENSITIVITY LINK

It was found necessary to provide an optical link for transmission of the low-level 1-kHz signals produced by the field sensors when the irradiation source was relatively low-power laboratory signal generators (rather than a high-power radar transmitter). In order to expedite construction, one of the high-speed links was modified, keeping as much of the original circuitry as possible.

The control board (fig. 5 and 6) was unchanged except for altering the value of R12 to provide a 9-V output and the value of the timing capacitor on IC2 to produce a 1-kHz square-wave output.

The receiver (fig. 7) was modified by taking the signal output directly from pin 1 of the detector module and eliminating A3.

The transmitter required extensive changes: A1, A2, Q1, and Q2 (fig. 4) were removed, although the circuit board (fig. 3) was saved. The circuitry of figure 9 was then installed. The LM 381 was epoxied (pins up) at the location of A1, A2 in the original circuit. The 2N2905 was located in the heat sink which held Q1 in the high-speed link. Point-to-point wiring, as in figure 3, was used.

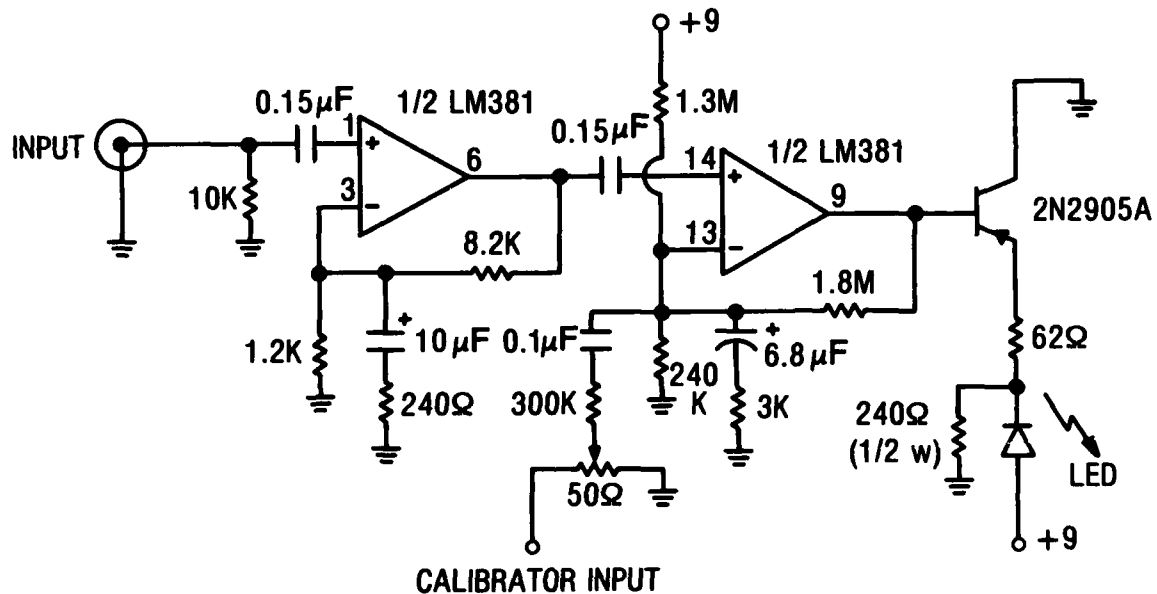


Figure 9. Schematic of high-sensitivity 1-kHz transmitter.

To reduce the noise level at the input, one of the two transistors in the differential first stage was disabled, and the signal and feedback were applied to the base and emitter, respectively, of the remaining transistor. The noise level at the receiver output corresponds to about 3 μV at the input to the transmitter (over a bandwidth of 10 Hz to 10 kHz); gain from input to output is about 55 dB. The maximum linear input is about 350 μV . If a tuned detector, such as a Hewlett Packard 3410 microvolt meter, is placed at the receiver, input signal levels on the order of 0.1 μV can be measured.

4. CONCLUDING REMARKS

The simple circuits in the transmitter could obviously be hybridized, resulting in an even smaller package. The present configuration did meet all needs of the experiment and was relatively quick and economical to build. A single-fiber connection scheme was considered in which the signal LED (LED 1 of fig. 4) would serve as a detector for control commands before being biased "on" for transmission. This would have the desirable result of saving one interconnecting fiber-optic cable, but would increase the size of the control circuitry somewhat; such a scheme would also require several mechanical and optical components in the fiber-to-detector path in order to switch the fiber between the function of carrying control signals from receiver to transmitter and that of carrying data from transmitter to receiver. This single-fiber approach was not implemented in this system because the difficulties associated with a second (control) fiber were minor. Where long fiber runs are needed, or access for laying cables is limited, the single fiber might have considerable advantage.

DISTRIBUTION

ADMINISTRATOR
DEFENSE TECHNICAL INFORMATION CENTER
ATTN DTIC-DDA (12 COPIES)
CAMERON STATION, BUILDING 5
ALEXANDRIA, VA 22314

COMMANDER
US ARMY RSCH & STD GP (EUR)
ATTN CHIEF, PHYSICS & MATH BRANCH
FPO NEW YORK 09510

COMMANDER
US ARMY MISSILE & MUNITIONS
CENTER & SCHOOL
ATTN ATSK-CTD-F
REDSTONE ARSENAL, AL 35809

DIRECTOR
US ARMY MATERIEL SYSTEMS ANALYSIS
ACTIVITY
ATTN DRXSY-MP
ABERDEEN PROVING GROUND, MD 21005

DIRECTOR
US ARMY BALLISTIC RESEARCH LABORATORY
ATTN DRDAR-TSB-S (STINFO)
ABERDEEN PROVING GROUND, MD 21005

US ARMY ELECTRONICS TECHNOLOGY
& DEVICES LABORATORY
ATTN DELET-DD
FT MONMOUTH, NJ 07703

HQ, USAF/SAMI
WASHINGTON, DC 20330

DEPARTMENT OF COMMERCE
NATIONAL BUREAU OF STANDARDS
ATTN LIBRARY
ATTN CENTER FOR RADIATION RESEARCH
WASHINGTON, DC 20230

DIRECTOR
DEFENSE ADVANCED RESEARCH
PROJECTS AGENCY
ARCHITECT BLDG
ATTN MATERIALS SCIENCES
ATTN ADVANCED CONCEPTS DIV
ATTN TARGET ACQUISITION
& ENGAGEMENT DIV
ATTN WEAPONS TECH & CONCEPTS DIV
1400 WILSON BLVD
ARLINGTON, VA 22209

DIRECTOR
DEFENSE COMMUNICATIONS AGENCY
ATTN TECH LIBRARY
ATTN COMMAND & CONTROL TECHNICAL
CENTER
WASHINGTON, DC 20305

DIRECTOR
DEFENSE COMMUNICATIONS ENGINEERING
CENTER
ATTN TECHNICAL LIBRARY
1860 WIEHLE AVE
RESTON, VA 22090

DIRECTOR
NATIONAL SECURITY AGENCY
ATTN TECHNICAL LIBRARY
FT MEADE, MD 20755

DIRECTOR
DEFENSE NUCLEAR AGENCY
ATTN DDST, E. E. CONRAD, DEP DIR
SCIENCE & TECHNOLOGY
ATTN TISI, SCIENTIFIC INFORMATION DIV
ATTN TITL, TECHNICAL LIBRARY DIV
ATTN SPTD, TEST DIVISION
ATTN RAAE, ATMOSPHERIC EFFECTS DIV
ATTN RAEV, ELECTONICS
VULNERABILITY DIV
ATTN RAEE, EMP EFFECTS DIV
WASHINGTON, DC 20305

COMMANDER
FIELD COMMAND
DEFENSE NUCLEAR AGENCY
ATTN FCPR
ATTN FCSD-A4, TECH REF BR
KIRTLAND AFB, NM 87115

UNDER SECRETRY OF DEFENSE
FOR RESEARCH & ENGINEERING
ATTN TEST & EVALUATION
ATTN RESEARCH & ADVANCE TECH
WASHINGTON, DC 20301

DIRECTOR
APPLIED TECHNOLOGY LABORATORY
AVRADCOM
ATTN DAVDL-ATL-TSD, TECH LIBRARY
FT EUSTIS, VA 23604

CHIEF
US ARMY COMMUNICATIONS SYS AGENCY
FT MONMOUTH, NJ 07703

COMMANDER
US ARMY COMMUNICATIONS & ELECTRONICS
MATERIEL READINESS COMMAND
FT MONMOUTH, NJ 07703

COMMANDER
US ARMY COMMUNICATIONS RESEARCH &
DEVELOPMENT COMMAND
ATTN DRCPM-TF, OFC OF THE PM TACTICAL
FIRE DIRECTION SYS/FIELD ARTILLERY
TACTICAL DATA SYSTEMS
(TACFIRE/FATDS)

DISTRIBUTION (Cont'd)

US ARMY COMMUNICATIONS RESEARCH &
DEVELOPMENT COMMAND (Cont'd)
ATTN DRCPM-MSCS, OFC OF THE PM MULTI-
SERVICE COMMUNICATIONS SYS
ATTN DRCPM-ATC, OFC OF THE PM ARMY
TACTICAL COMMUNICATIONS
SYS (ATACS)
ATTN DRDCO-PPA, PLANS, PROGRAMS &
ANALYSIS DIR
ATTN DRDCO-TCS, CENTER FOR TACTICAL
COMPUTER SYS
ATTN DRDCO-COM, CENTER FOR
COMMUNICATIONS SYS
ATTN DRDCO-SEI, SYS ENGINEERING
& INTEGRATION (CENSEI)
FT MONMOUTH, NJ 07703

COMMANDER
US ARMY COMMUNICATIONS COMMAND
USA COMMO AGENCY, WS
WHITE SANDS MISSILE RANGE, NM 88002

COMMANDER
US ARMY COMPUTER SYSTEMS COMMAND
ATTN TECH LIB
FT BELVOIR, VA 22060

COMMANDER
ERADCOM TECHNICAL SUPPORT ACTIVITY
ATTN DELSD-L, TECH LIB DIR
FT MONMOUTH, NJ 07703

DIRECTOR
ELECTRONICS TECHNOLOGY &
DEVICES LABORATORY
US ARMY ERADCOM
ATTN DELET-DT, DIR TECHNICAL PLANS &
PROGRAMS OFFICE
ATTN DELET-E, DIR ELECTRONIC MATERIALS
RESEARCH DIV
ATTN DELET-I, DIR MICROELECTRONICS DIV
ATTN DELET-M, MICROWAVE & SIGNAL
PROCESSING DEVICES DIV
FT MONMOUTH, NJ 07703

DIRECTOR
ELECTRONIC WARFARE LABORATORY
ATTN DELEW-SM, EW SYSTEMS MGT OFFICE
ATTN DELEW-C, COMM INTEL/CM DIV
ATTN DELEW-E, ELCT INTEL/CM DIV
ATTN DELEW-V, EM VULN & ECCM DIV
FT MONMOUTH, NJ 07703

COMMANDER
US ARMY MATERIEL SYSTEMS ANALYSIS
ACTIVITY
ATTN X5 (W3JCAA)
ABERDEEN PROVING GROUND, MD 21005

COMMANDER
US ARMY MISSILE COMMAND
ATTN DRCPM-CF, CHAPARRAL/FAAR
ATTN DRCPM-HD, HELLFIRE/GLD
ATTN DRCPM-PE, PERSHING
ATTN DRCPM-DT, TOW DRAGON
ATTN DRCPM-RS, GENERAL SUPPORT
ROCKET SYS
ATTN DRCPM-HEL, HIGH ENERGY LASER SYS
ATTN DRCPM-ROL, ROLAND
ATTN DRCPM-VI, VIPER
ATTN DRCPM-HA, HAWK
ATTN DRCPM-LC, LANCE
ATTN DRCPM-MP, STINGER
ATTN DRSMI-O, ADVANCED SYS CONCEPTS
OFFICE
ATTN DRSMI-V, COPPERHEAD
ATTN DRSMI-T, TARGETS MANAGEMENT OFFICE
ATTN DRSMI-U, WEAPONS SYS MGT DIR
ATTN DRSMI-D, PLANS, ANALYSIS,
& EVALUATION
ATTN DRSMI-E, ENGINEERING
ATTN DRSMI-Q, PRODUCT ASSURANCE
ATTN DRSMI-S, MATERIEL MANAGEMENT
ATTN DRSMI-W, MGMT INFO SYSTEMS
REDSTONE ARSENAL, AL 35809

DIRECTOR
US ARMY MISSILE LABORATORY
USAMICOM
ATTN DRSMI-RPR, REDSTONE SCIENTIFIC
INFO CENTER
ATTN DRSMI-RPT, TECHNICAL
INFORMATION DIV
ATTN DRSMI-RN, CHIEF, TECHNOLOGY
INTEGRATION OFFICE
ATTN DRSMI-RA, CHIEF, DARPA PROJECTS
OFFICE
ATTN DRSI-RH, DIR, DIRECTED ENERGY
DIRECTORATE
ATTN DRSMI-RL, SPE ASST GROUND EQUIP &
MISSILE STRUCTURES DIR
ATTN DRSMI-RR, RESEARCH DIR
ATTN DRSMI-RS, SYS ENGR DIR
ATTN DRSMI-RT, TEST & EVAL DIR
ATTN DRSMI-RD, SYS SIMULATION & DEV DIR
ATTN DRSMI-RE, ADVANCED SENSORS DIR
ATTN DRSMI-RK, PROPULSION DIR
ATTN DRSMI-RG, GUIDANCE & CONTROL DIR
REDSTONE ARSENAL, AL 35809

DIRECTOR
NIGHT VISION & ELECTRO-OPTICS
LABORATORY
ATTN DELNV-D, AD FOR DEV & ENGRG
ATTN DELNV-PA, PRODUCT ASSURANCE DIV
ATTN DELNV-AC, ADVANCED CONCEPTS DIV
ATTN DELNV-AC, TARGET ACQUISITION RES
ATTN DELNV-IRT, INFRARED TECHNOLOGY DIV
ATTN DELNV-L, LASER DIVISION

DISTRIBUTION (Cont'd)

NIGHT VISION & ELECTRO-OPTICS
LABORATORY (Cont'd)

ATTN DELNV-R, ELECTRO-OPTICS RES
ATTN DELNV-R, ELECTRONICS MATERIALS RES
ATTN DELNV-SE, SYSTEMS ENGINEERING DIV
ATTN DELNV-SE, MISSILES
ATTN DELNV-SI, SYSTEMS INTEGRATION DIV
ATTN DELNV-SI, COMBAT VEHICLES
ATTN DELNV-SI, OPTICS
ATTN DELNV-SI, ELECTRONICS
ATTN DELNV-VI, VISIONIC DIVISION
ATTN DELNV-VI, BATTLEFIELD ENVIRONMENT
ATTN DELNV-VI, BATTLEFIELD SYSTEMS
PERFORMANCE
FT BELVOIR, VA 22060

DIRECTOR
US ARMY RESEARCH & TECHNOLOGY
LABORATORIES
AMES RESEARCH CENTER
MOFFETT FIELD, CA 94035

ARMY RESEARCH OFFICE (DURHAM)
PO BOX 12211
ATTN DRXRO-EL, DIR ELECTRONICS DIV
ATTN DRXRO-MA, DIR MATHEMATICS DIV
ATTN DRXRO-CB, DIR CHEMICAL-BIOLOGICAL
DIV
ATTN DRXRO-PH, DIR PHYSICS DIV
ATTN DRXRO-MS, METALLURGY-MATERIALS
DIV
ATTN DRXRO-EG, DIR ENGINEERING DIV
RESEARCH TRIANGLE PARK, NC 27709

OFFICE OF THE DEPUTY CHIEF OF STAFF
FOR RESEARCH, DEVELOPMENT,
& ACQUISITION
ATTN DIR OF ARMY RES, DAMA-ARZ-A
DR. M. E. LASSER
ATTN DAMA-RAX, SYSTEMS REVIEW &
ANALYSIS OFFICE
ATTN DAMA-ZE, ADVANCED CONCEPTS TEAM
ATTN DAMD-CSZ-A, DIR OF COMBAT
SUPPORT SYSTEMS
ATTN DAMA-WSZ-A, DIR OF WEAPONS SYSTEMS
ATTN DAMA-PPZ-A, DIR OF MATERIAL PLANS
& PROGRAMS
ATTN DAMA-CSC, COMMAND, CONTROL,
SURVEILLANCE SYSTEMS DIV
ATTN DAMA-WSA, AVIATION SYSTEMS DIV
ATTN DAMA-CSM, MUNITIONS DIV
ATTN DAMA-WSM, MISSILES & AIR
DEFENSE SYSTEMS DIV
ATTN DAMA-CSS, SUPPORT SYSTEMS DIV
ATTN DAMA-WSW, GROUND COMBAT
SYSTEMS DIV
WASHINGTON, DC 20317

US ARMY SATELLITE COMMUNICATIONS
AGENCY
CORADCOM
FT MONMOUTH, NJ 07703

DIRECTOR
US ARMY SIGNALS WARFARE LABORATORY
VINT HILL FARMS STATION
ATTN DELSW-RA, ANALYSIS &
APPLICATIONS DIV
ATTN DELSW-CE, COMMUNICATIONS/EW
DIVISION
ATTN DELSW-EE ELECTRONICS/EW DIVISION
ATTN DELSW-GD, GENERAL SUPPORT SYSTEMS
DIVISION
ATTN DELSW-OS, OFFICE OF THE SCIENTIFIC
ADVISOR
ATTN DELSW-CAC, PROJECT MANAGER--
CONTROL & ANALYSIS CENTERS OFFICE
ATTN DELSW-M, RESOURCE MGMT & PLANS
DIV
ATTN DELSW-SS, SIGNAL SECURITY OFFICE
ATTN DELSW-DT, TACTICAL DATA SYSTEMS
DIVISION
WARRENTON, VA 22186

COMMANDER
US ARMY TANK-AUTOMOTIVE COMMAND
ATTN DRCPM-CVT, ARMORED COMBAT
VEHICLE TECHNOLOGY
ATTN DRCPM-ITV, IMPROVED TOW VEHICLE
ATTN DRDTR-R, TANK-AUTOMOTIVE SYSTEMS
LABORATORY
ATTN DRDTR-Z, TANK-AUTOMOTIVE CONCEPTS
LABORATORY
ATTN DRDTR-T, DIR FOR ENGINEERING
SUPPORT
ATTN DRDTR-J, DIR FOR PRODUCT ASSURANCE
28251 VAN DYKE AVENUE
WARREN, MI 48090

COMMANDER
US ARMY TEST & EVALUATION
COMMAND
ABERDEEN PROVING GROUND, MD 21005

COMMANDER
WHITE SANDS MISSILE RANGE
DEPT OF THE ARMY
ATTN STEWS-CE, COMMUNICATIONS/
ELEC OFFICE
WHITE SANDS MISSILE RANGE, NM 88002

COMMANDER
US ARMY ELECTRONICS PROVING GROUND
FT HUACHUCA, AZ 85613

DISTRIBUTION (Cont'd)

ASSISTANT SECRETARY OF THE NAVY
RESEARCH, ENGINEERING, & SYSTEMS
DEPT OF THE NAVY
WASHINGTON, DC 20350

COMMANDER
NAVAL AIR DEVELOPMENT CENTER
ATTN TECHNICAL LIBRARY
WARMINSTER, PA 18974

CHIEF OF NAVAL OPERATIONS
DEPT OF THE NAVY
ATTN DIR, COM & CONTR &
COMMUNICATIONS PROGRAMS
WASHINGTON, DC 20350

SUPERINTENDENT
NAVAL POSTGRADUATE SCHOOL
ATTN LIBRARY, CODE 2124
MONTEREY, CA 93940

DIRECTOR
NAVAL RESEARCH LABORATORY
ATTN 2600, TECHNICAL INFO DIV
ATTN 2750, OPTICAL SCIENCES DIV
ATTN 5500, OPTICAL SCI DIV
ATTN 6000, MATL & RADIATION
SCI & TE
WASHINGTON, DC 20375

COMMANDER
DAVID W. TAYLOR NAVAL SHIP R&D CENTER
BETHESDA, MD 20084

COMMANDER
NAVAL SURFACE WEAPONS CENTER
ATTN DX-21, LIB DIV
DAHLGREN, VA 22448

COMMANDER
NAVAL SURFACE WEAPONS CENTER
ATTN F30, NUCLEAR EFFECTS DIV
ATTN R-40, RADIATION DIV
ATTN R-42, ELECTRO-OPTICS BR
ATTN X22, TECHNICAL LIB
WHITE OAK, MD 20910

COMMANDER
NAVAL TELECOMMUNICATIONS COMMAND HQ
ATTN TECHNICAL LIBRARY
4401 MASS AVE NW
WASHINGTON, DC 20390

COMMANDER
NAVAL WEAPONS CENTER
ATTN 38, RESEARCH DEPT
ATTN 381, PHYSICS DIV
CHINA LAKE, CA 93555

COMMANDER OFFICER
NAVAL WEAPONS EVALUATION FACILITY
KIRTLAND AIR FORCE BASE
ALBUQUERQUE, NM 87117

DEPUTY CHIEF OF STAFF
RESEARCH & DEVELOPMENT
HEADQUARTERS, US AIR FORCE
ATTN AFRDQSM
WASHINGTON, DC 20330

AIR FORCE AVIONICS LABORATORY
ATTN KJA (TEO), ELECTRO-OPTICS
TECHNOLOGY BR
WRIGHT-PATTERSON AFB, OH 45433

COMMANDER
AF ELECTRONIC SYSTEMS DIVISION
ATTN WO, DEP FOR CONTROL
& COMMUNICATIONS SYS
LG HANSCOM AFB, MA 01730

RELIABILITY ANALYSIS CENTER
RADC (RBRAC)
GRIFFISS AFB, NY 13441

COMMANDER
HQ ROME AIR DEVELOPMENT CENTER (AFSC)
ATTN LE, DEPUTY FOR ELECTRONIC TECH
ATTN LMT, TELECOMMUNICATIONS BR
GRIFFISS AFB, NY 13441

DIRECTOR
AF OFFICE OF SCIENTIFIC RESEARCH
BOLLING AFB
ATTN NE, DIR OF ELECTRONIC &
SOLID STATE SCI
WASHINGTON, DC 20332

COMMANDER
HQ AIR FORCE SYSTEMS COMMAND
ANDREWS AFB
ATTN TECHNICAL LIBRARY
WASHINGTON, DC 20334

AF WEAPONS LABORATORY, AFSC
ATTN EL, ELECTRONICS DIV
ATTN LR, LASER DEV DIV
KIRTLAND AFB, NM 87117

DIRECTOR
NASA
ATTN TECHNICAL LIBRARY
JOHN F. KENNEDY SPACE
CENTER, FL 32899

DIRECTOR
NASA
LANGLEY RESEARCH CENTER
ATTN TECHNICAL LIBRARY
HAMPTON, VA 23665

DISTRIBUTION (Cont'd)

DIRECTOR
NASA
LEWIS RESEARCH CENTER
ATTN TECHNICAL LIBRARY
CLEVELAND, OH 44135

JET PROPULSION LABORATORY
CALIFORNIA INSTITUTE OF TECHNOLOGY
4800 OAK GROVE DRIVE
ATTN TECHNICAL LIBRARY
PASADENA, CA 91103

LAWRENCE LIVERMORE NATIONAL LABORATORY
PO BOX 808
LIVERMORE, CA 94550

SANDIA LABORATORIES
LIVERMORE LABORATORY
PO BOX 969
LIVERMORE, CA 94550

SANDIA NATIONAL LABORATORIES
PO BOX 5800
ALBUQUERQUE, NM 87185

US ARMY ELECTRONICS RESEARCH
& DEVELOPMENT COMMAND
ATTN TECHNICAL DIRECTOR, DRDEL-CT

HARRY DIAMOND LABORATORIES
ATTN CO/TD/TSO/DIVISION DIRECTORS
ATTN RECORD COPY, 81200
ATTN HDL LIBRARY, 81100 (3 COPIES)
ATTN HDL LIBRARY, 81100 (WOODBRIDGE)
ATTN TECHNICAL REPORTS BRANCH, 81300
ATTN LEGAL OFFICE, 97000
ATTN CHAIRMAN, EDITORIAL COMMITTEE
ATTN MORRISON, R. E., 13500 (GIDEP)
ATTN CHIEF, 21000
ATTN CHIEF, 21100
ATTN CHIEF, 21200
ATTN CHIEF, 21300
ATTN CHIEF, 21400
ATTN CHIEF, 21500
ATTN CHIEF, 22000
ATTN CHIEF, 22100
ATTN CHIEF, 22300
ATTN CHIEF, 22800
ATTN CHIEF, 22900
ATTN CHIEF, 20240
ATTN B. ROD, 21100
ATTN R. GARVER, 21100
ATTN H. BRISKER, 21100
ATTN C. FAZI, 21100
ATTN J. VANDERWALL, 22800
ATTN R. GILBERT, 22800 (30 COPIES)
ATTN J. BLACKBURN, 22800 (30 COPIES)

5-83

DTIC

FILMED

5-83

DTIC