

AD-A130 284

CRACK INITIATION AND PROPAGATION PROPERTIES OF HY 130  
STEEL WELDMENTS FOL. (U) DEFENCE RESEARCH ESTABLISHMENT  
PACIFIC VICTORIA (BRITISH COLU. K I MCRAE SEP 82

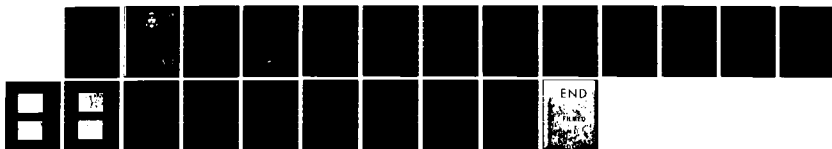
1/1

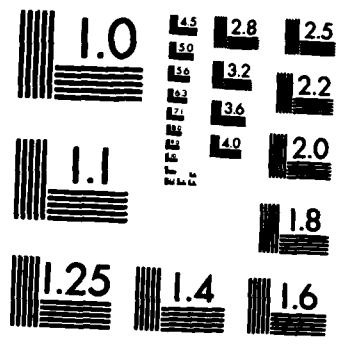
UNCLASSIFIED

DREP-82-M

F/G 11/6

NL





MICROCOPY RESOLUTION TEST CHART  
NATIONAL BUREAU OF STANDARDS-1963-A

DA 130284

**UNCLASSIFIED**  
Unlimited Distribution

3



**DEFENCE RESEARCH ESTABLISHMENT PACIFIC**  
Victoria, B.C.

**Materials Report 82-M**

**CRACK INITIATION AND PROPAGATION PROPERTIES  
OF HY 130 STEEL WELDMENTS FOLLOWING  
TEMPER EMBRITTLEMENT**

**K.I. McRae**

**September 1982**

**DTIC**  
**ELECTE**  
**JUL 13 1983**  
**S D**

**DTIC FILE COPY**

**Research and Development Branch**  
**Department of National Defence**

**Canada 83 07 12 171**

This information is furnished with the express  
understanding that proprietary and patent rights  
will be protected.

Accession For	
NTIS GRA&I	<input checked="" type="checkbox"/>
DTIC TAB	<input type="checkbox"/>
Unannounced	<input type="checkbox"/>
Justification	
By _____	
Distribution/	
Availability Codes	
Dist	Avail and/or Special
A	



DEFENCE RESEARCH ESTABLISHMENT PACIFIC  
VICTORIA, B.C.

Materials Reports 82-M

CRACK INITIATION AND PROPAGATION PROPERTIES OF HY 130 STEEL WELDMENTS  
FOLLOWING TEMPER EMBRITTLEMENT

K. McRae

September 1982

*R. D. Baran*  
Section Head

Approved by:

*H. Z. [Signature]*  
C/DREP



RESEARCH AND DEVELOPMENT BRANCH  
DEPARTMENT OF NATIONAL DEFENCE  
CANADA

Abstract

→ Elastic-plastic fracture mechanics (EPFM) may be applied to engineering problems to determine material properties related to crack initiation and propagation. Specifically, these concepts have been applied to a study of the "as welded" and temper embrittled weldments of HY 130 steel. The property relating the energy requirement for ductile crack initiation,  $J_{IC}$  or  $K_{IC}$ , is seen to be similar in both instances, although previous Charpy V-notch testing results have indicated large differences in toughness. The sensitivity to embrittlement is reflected, however, by a large difference in the crack propagation property, the tearing modulus,  $T$ . The data are also compared to crack initiation and crack propagation energies measured during instrumented impact tests. ←

## Introduction

The application of linear elastic fracture mechanics (LEFM) to engineering fracture analyses has become increasingly widespread and the use of the critical stress intensity parameter,  $K_{Ic}$ , has proven valid and useful if plane strain conditions are maintained in the specimen or structure. However, many modern engineering materials possess high fracture toughness and, therefore, require very large specimen sizes to maintain valid plane strain conditions required for (LEFM) fracture toughness testing<sup>1</sup>. Also, in many instances, an engineering structure, such as an aircraft wing, will contain thin section components that fracture under totally plane stress conditions. There was clearly a requirement for parameters which reflect real fracture conditions and which were measurable utilizing the smaller specimen dimensions which more accurately represent the engineering structures to which the particular material was to be applied. The advent of elastic-plastic fracture mechanics (EPFM) has proven valuable because a critical fracture initiation parameter,  $J_{Ic}$ , may be determined to provide a measure of the strain energy released at fracture initiation and may also be measured by the use of relatively small specimens. A second parameter, which provides a measure of the resistance to crack propagation, the tearing modulus,  $T$ , may also be calculated by elastic-plastic fracture analysis. In addition, estimates of the plane strain stress intensity,  $K_{Ic}$ , may be made via a simple relation to the critical elastic-plastic parameter,  $J_{Ic}$ .

In recent years, DREP<sup>2,3,4</sup> and the University of British Columbia<sup>5,6</sup> have completed several investigations regarding the marine applications of HY 130 steel and its weldments. These investigations have included Charpy V-notch and LEFM fracture analyses of both parent and stick welded air-melted, vacuum-degassed (AMVD) HY 130 steel. This previous work has demonstrated that weld stress relief heat treating procedures may result in significant temper embrittlement of the weld<sup>3,6</sup>. This present investigation compares the appropriate elastic-plastic parameters in the normal and temper embrittled HY 130 weldments. These data will also be correlated to a fractographic comparison of the two material conditions.

Method for  $J_{Ic}$  and Tearing Modulus Determination

Several possible methods exist for the measurement of  $J_{Ic}$  in small three-point bend or modified compact tension specimens. These include an accurate multiple specimen technique and a variety of single specimen techniques utilizing methods such as specimen unloading compliance, AC and DC potential drop, ultrasonics and acoustic emission as a means of determining the point of crack initiation. In every instance, the primary concern is the determination of the precise point at which ductile crack growth commences, with a minimum of ductile crack propagation. Recently, the ASTM Committee E24 has produced a document<sup>7</sup> which is intended to serve as a basis for a standard measurement procedure of  $J_{Ic}$ . The technique which is considered most appropriate requires the use of at least four specimens to produce a crack growth resistance or R-curve. Although this multiple specimen procedure is somewhat more costly and time consuming than a single specimen procedure, it is considered to be the most accurate and also allows the evaluation of the ductile crack propagation properties of the material.

Specifically, the procedure requires that fatigue cracks be produced in each of the specimens to a crack length to specimen width ratio of  $a/W > 0.5$ . Each specimen is then loaded to different levels within the plastic region to produce different amounts of ductile crack growth, while the applied load and the load-line displacement is monitored. The specimens are then unloaded and the crack front is marked by either heat tinting, as in the case of the HY 130 steel specimens, or by fatigue post-cracking, as would be done for non-ferrous alloys. The amount of ductile crack growth ( $\Delta a$ ) is then measured directly from the specimen surface and the corresponding  $J$  integral values are calculated (for three-point bend specimens with a specimen span-to-width ratio of  $S/W = 4.0$ ) from the load-displacement diagram using the following equation:

$$J = 2A/Bb$$

where

A= the area under the load-displacement curve to the point of unloading (in-lb)

B= the specimen thickness (in)

b= the length of the uncracked ligament (in)

The calculated values of  $J$  are then plotted as a function of the ductile crack extension,  $\Delta a$ , and a straight line through these points is calculated to produce the so-called "R-line". A schematic R-curve is shown in Figure 1 which also illustrates the effect of crack tip blunting prior to

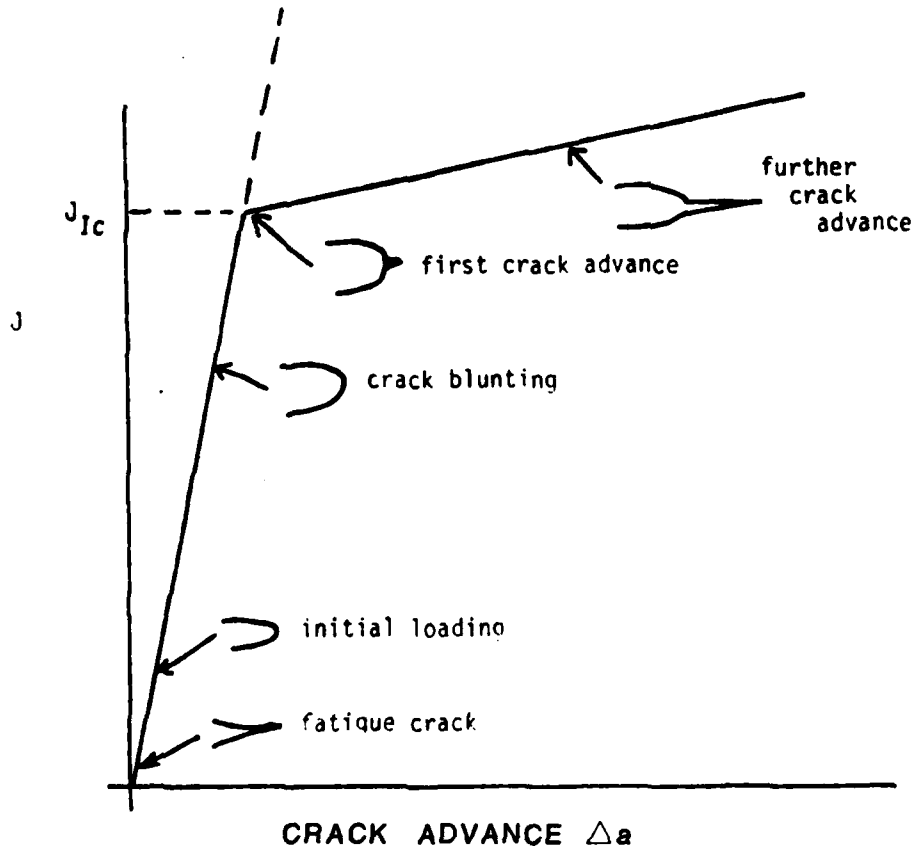


Figure 1. Schematic J - R Curve showing the changing crack tip condition.

crack initiation. The blunting line may be calculated from the equation:

$$J = 2\sigma_y \Delta a$$

where  $\sigma_y$  is the flow stress, usually expressed as the mean of the ultimate tensile and yield stresses (psi). The critical value of the J integral corresponding to ductile crack initiation,  $J_{IC}$ , is then taken to be the intersection of the blunting and R-Lines. In addition to the critical initiation parameter,  $J_{IC}$ , a measure of the resistance to crack propagation is also accomplished by calculation of the tearing modulus given by the equation:

$$T = \left( \frac{dJ}{da} \right) \frac{E}{\sigma_y^2}$$

where  $dJ/da$  is the slope of the R-line and E is Young's modulus. This parameter may be used in a relative sense to differentiate ductile and brittle materials. Ductile materials have a relatively large value of  $dJ/da$ , corresponding to a high resistance to crack extension. Conversely, brittle materials will possess a low tearing modulus.

The procedure for the determination of  $J_{IC}$ , as suggested by ASTM Committee E24, was followed during this investigation, with the following exceptions:

- a. Ductile crack extension was not limited to approximately 0.06 inches and possible non-linearities may have developed, but these are not immediately apparent.
- b. The R-Line is not always defined by the required minimum of four data points within the valid crack extension region.
- c. In order to reduce the total time required for testing, fatigue pre-cracks were produced using higher applied loads than those normally recommended.

- d. Crack length and ductile crack extension were measured by simple three point averaging at the fracture surface, as opposed to the recommended nine point averaging procedure.

Load-line displacement is measured directly from linearly variable differential transformer (LVDT) of the lower ram of an MTS servo hydraulic testing system. A compliance correction is then applied to allow for elastic compression of the test fixture and indentation of the rollers into the specimen. An uncracked specimen is loaded to a load greater than that applied to the cracked specimens during testing and the area under the load versus load-line displacement is calculated for each specimen. This energy, corresponding to the test fixture compliance, is then subtracted from the measured areas under the original load-displacement curves. A typical load versus load-line displacement curve as originally measured by the LVDT and after compliance correction is shown in Figure 2.

### Welded HY-130 Compliance Correction

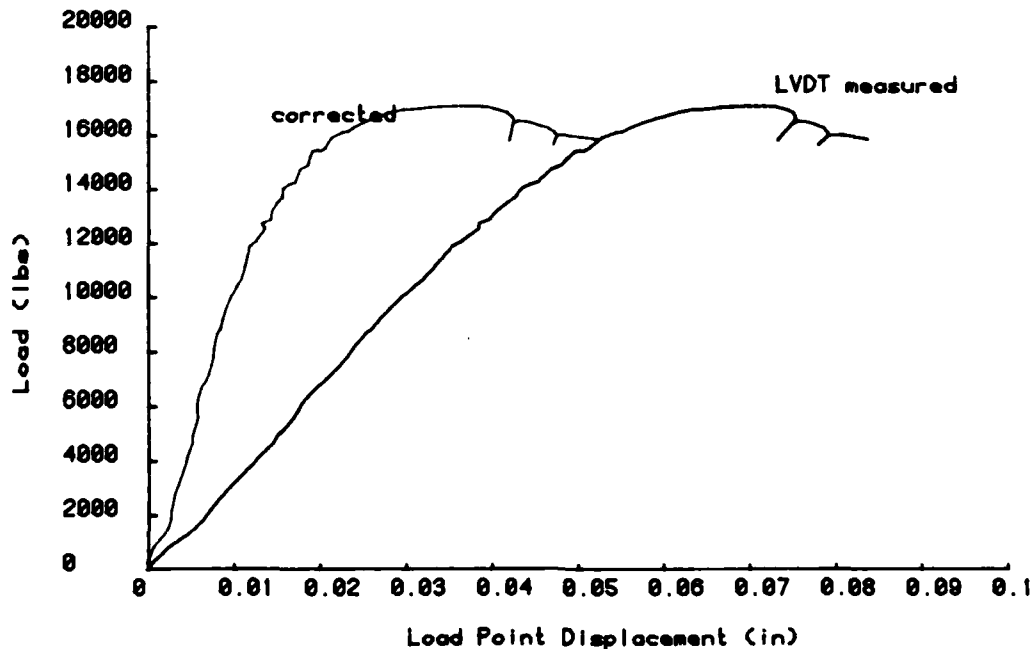


Figure 2. Typical load-displacement curve showing compliance correction.

### HY 130 Steel Weldments

Previous investigations at DREP and the University of British Columbia have obtained data on the fatigue crack initiation properties<sup>2</sup>, the Charpy V-notch impact properties<sup>3</sup> and the resistance to environmental cracking of HY 130 steel and its weldments<sup>4</sup>. The compositions of the HY 130 parent and weld metals are given in Table I.

TABLE I

	<u>%C</u>	<u>%Ni</u>	<u>%Mn</u>	<u>%Cr</u>	<u>%Mo</u>	<u>%V</u>	<u>%Si</u>	<u>%S</u>
HY 130 Parent	.1	5.3	.78	.59	.49	.06	.3	.012
E 14018 Weld	-	3.5	.9	.55	.64	-	-	.005

Additionally, both the static and dynamic  $J_{IC}$  determinations have been made for the HY 130 parent material<sup>5,8</sup> and dynamic  $J_{IC}$  measurements have been made for HY 130 weldments in the "as welded" and in the temper embrittled conditions by instrumented impact testing<sup>5</sup>.

The pertinent conclusions reached during these investigations may be summarized as follows:

1. Significant temper embrittlement is induced in HY 130 weldments produced by an E14018 weld rod with subsequent stress relief heat treatment at 1150°F for two hours, followed by a furnace cooling procedure.
2. The fracture toughness estimated from slightly undersized specimens of E14018 welded HY 130 indicated values of  $K_{IC}$  to be 113 KSI $\sqrt{in}$  and 112 KSI $\sqrt{in}$  in the "as welded" and temper embrittled conditions, respectively.

3. Charpy impact energies<sup>3</sup>, however, decreased drastically upon temper embrittlement. Impact energies in excess of 50 ft-lb were measured for the "as welded" specimens at temperatures of -40°F, whereas the temper embrittled weld produced impact energies as low as 5 ft-lb at -40°F. Similar results were also obtained by Hawbolt<sup>6</sup> during his investigation of HY 130 temper embrittlement.
4. The value of  $J_{Ic}$  for parent AMVD HY 130 steel<sup>8</sup> was determined to be 670 in-lb/in<sup>2</sup>, which corresponds to a  $K_{Ic}$  estimate of 148 KSI  $\sqrt{in}$ .
5.  $K_{Ic}$  estimates obtained from dynamic  $J_{Ic}$  measurements<sup>5</sup>, produced during HAZ fracture, indicated values of 175 KSI  $\sqrt{in}$  and 142 KSI  $\sqrt{in}$  for the "as welded" and temper embrittled specimens, respectively.

The R-curve data for the "as welded" and temper embrittled weldments resulting from the present investigation are shown in Figure 3. The measured values of  $J_{Ic}$  are 733 in-lb/in<sup>2</sup> for the "as welded" material and 500 in-lb/in<sup>2</sup> for the temper embrittled material. The corresponding  $K_{Ic}$  estimates of 148 KSI  $\sqrt{in}$  and 122 KSI  $\sqrt{in}$  indicate the same trend as those measured by Hawbolt<sup>6</sup>, however, these results also reflect an expected decrease in fracture toughness of the weld metal in comparison to HY 130 parent material. It has been demonstrated previously by Hawbolt<sup>5</sup> that crack initiation energies vary only slightly with temper embrittlement, whereas the crack propagation energies are very susceptible to this effect. Therefore, it is indeed reasonable that the fracture toughness initiation parameter,  $K_{Ic}$ , is relatively insensitive to changes in ductility. However, crack propagation parameters such as the tearing modulus should exhibit large relative changes with ductility. Examination of the two R-curves shows greatly different slopes ( $dJ/da$ ) and, therefore, a decreased tearing modulus

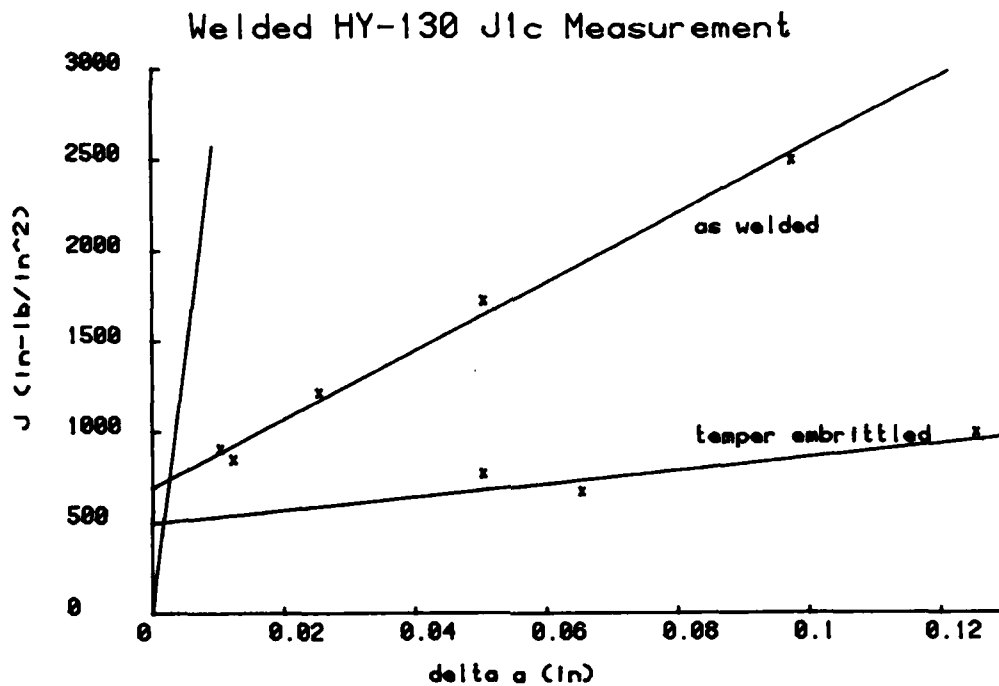


Figure 3. R - Curves for "as welded" and temper embrittled HY 130 weldments.

of the embrittled material. The calculated tearing modulus of the "as welded" material is found to be 30.2, whereas the tearing modulus falls to a value of 5.8 following temper embrittlement. This result agrees reasonably well with that of Gudas et al.<sup>9</sup> who measured a tearing modulus of  $T=34.4$  in similar AMVD HY 130 steel.

After final fracture, the fracture surfaces of several specimens were examined in greater detail using the scanning electron microscope. Typical SEM micrographs of the crack front at the point of ductile crack extension for the "as welded" and temper embrittled specimens are presented in Figures 4 and 5, respectively. Examination of Figure 4b shows the presence of a small stretch zone followed by crack initiation and is indicative of high ductility. Examination of Figure 5b, the crack tip region of the embrittled



Figure 4a. SEM micrograph of "as welded" HY 130 crack tip x50

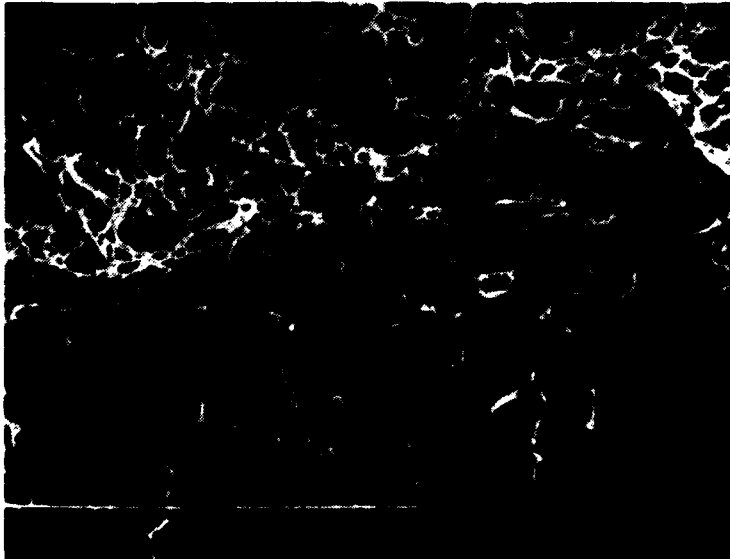


Figure 4b. SEM micrograph of "as welded" HY 130 crack tip x1050

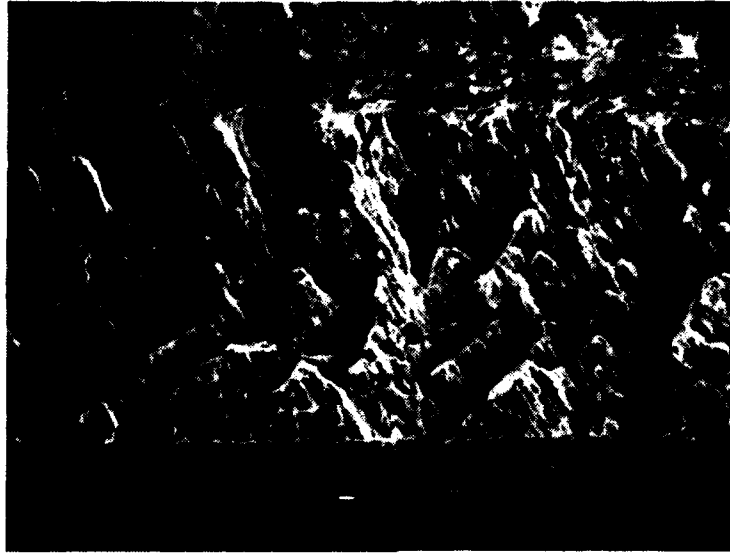


Figure 5a. Crack growth region of temper embrittled HY 130 weldment x35

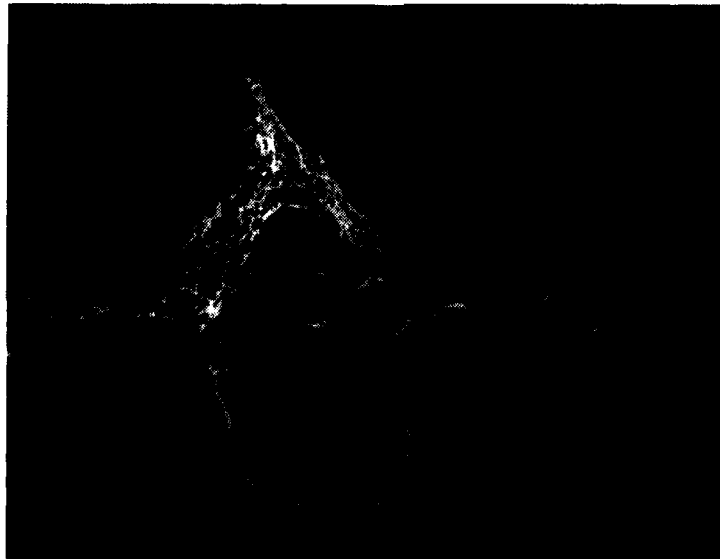


Figure 5b. Crack tip of HY 130 temper embrittled weldment x700

material, reveals a similar ductile behaviour at the point of crack initiation, however, the mode of crack propagation changes to an intergranular fracture mechanism which propagates along the grain boundaries of the large columnar grains of the embrittled weld. These results serve to confirm the differences noted previously regarding the initiation and propagation properties of these weldments. The condition of the crack tip is seen to be similar in both instances at the point of initiation. It is, therefore, reasonable that crack initiation in either material would require similar amounts of energy and produce similar values of  $J_{Ic}$ . The mode of crack propagation, however, differs considerably between the two material conditions. Intergranular crack propagation requires significantly less energy than propagation by microvoid coalescence. The difference noted in the tearing moduli of the weldments in the "as welded" and temper embrittled conditions is, therefore, a direct result of the mechanism of crack propagation.

### Conclusions

1. Apparent anomalies in the fracture behaviour of temper embrittled weldments of HY 130 may be explained in terms of their crack initiation and propagation properties. Crack initiation properties, such as plane strain fracture toughness ( $K_{Ic}$ ) or ductile fracture toughness ( $J_{Ic}$ ), are relatively insensitive to changes in material ductility. However, crack propagation energies are very susceptible to changes in ductility. Relative ductility measurements would be best accomplished utilizing parameters such as the measured crack propagation energy during instrumented impact Charpy V-notch testing or the ductile tearing modulus.
2. The measured fracture toughness values for the "as welded" and the temper embrittled E14018, HY 130 weldments are 733 in-lb/in<sup>2</sup> and 500 in-lb/in<sup>2</sup>, respectively. These values correspond to plane strain fracture toughness estimates of 148 KSI $\sqrt{in}$  and 122 KSI $\sqrt{in}$ , respectively.

3. The ductile tearing moduli for these same weldments are 30.2 and 5.5, respectively. The "as welded" value indicates only a slight weld embrittlement in comparison to the literature value of 34.4. The temper embrittled material has lost a great amount of ductility, as evidenced by the low tearing modulus.

References

1. ASTM Specification E399-78, Annual Book of ASTM Standards, Part 10 "Metal - Physical, Mechanical and Corrosion Testing", American Society for Testing and Materials, 1979.
2. T.P. Nikiforuk and B.F. Peters, "Fatigue Crack Initiation Properties of Welded and Stress Relieved HY 130 Steel", DREP Materials Report 77-A, December 1977.
3. B.F. Peters, "Charpy V-notch Impact Studies on Stress-Relieved HY 130 Weldments", DREP Materials Reports 79-G, December 1979.
4. T.P. Nikiforuk and J.A.H. Carson, "The Resistance of HY 130 Steel to Environmental Cracking in Sea Water", DREP Materials Reports 78-E, December 1978.
5. E.B. Hawbolt, "J<sub>int</sub> Fracture Toughness of HY 130 Steel and of an SMA Weld and HAZ in HY 130 Steel", Contract Research Report, Dept. of Metallurgical Engineering, University of British Columbia, April 1980.
6. E.B. Hawbolt, "Temper Embrittlement of SMA and GMA Weld Metal in HY 130 Steel", Contract Research Report OSB78-0088, Dept. of Metallurgy, University of British Columbia.
7. G.A. Clarke, W.R. Andrews, J.A. Begley, J.K. Donald, G.T. Embley, J.D. Landes, D.E. McCabe and J.H. Underwood, "A procedure for the Determination of Ductile Fracture Toughness Using J integral Techniques", Journal of Testing and Evaluation, JTEVA, Vol. 7, No. 1, Jan 1979, pp. 49-56.

8. J.R. Matthews and G.D. West, " $J_{IC}$  Measurement Point Determinations for HY 130, CMS-9 and Inconel 718", DREP Materials Report 80-A, March 1980.
9. J.P. Gudas, J.A. Joyce and D.A. Davis, "Investigation of Specimen Geometry Modifications to Determine the Conservative,  $J_I$ -R Curve Tearing Modulus Using the HY-130 Steel System", Fracture Mechanics, ASTM STP 677, C.W. Smith, Ed., American Society for Testing and Materials, 1979, pp. 198-214.

## DISTRIBUTION

Report No. DREP Materials Report 82-M  
Title: Crack Initiation and Propagation Properties  
of HY 130 Steel Weldments Following Temper  
Embrittlement  
Author: K. I. McRae  
Dated: September 1982  
Security Grading: Unclassified

2 - DSIS Circ. CRAD  
CRAD Attn: DST(OV)-2  
Plus distribution:

1 - DSIS Report Collection  
1 - Document Section (microfiche)  
1 - DREA  
2 - DREA/DL  
1 - DREV  
1 - DCIEM

1 - CEM            2 - DGMEM  
1 - DEMPS        1 - DMPM  
4 - DGAEM        1 - DMEE  
1 - QETE         1 - DMES  
1 - NETE         2 - DGLEM  
1 - LETE  
2 - CFB Shearwater, NS  
1 - CFB Comox, BC  
2 - AMDU

2 - CANMARCOM  
1 - COMTEHLANT  
1 - CANCOMDESRON 5  
1 - COSRUA(A)  
1 - RMC, Kingston  
Attn: Dept. Mech. Eng.  
1 - CDLS/W  
1 - CDLS/L  
1 - DRA(Paris)

2 - CANMARPAC  
3 - CO SRU(P)  
3 - CO NEU(P) Attn: EN3  
1 - CFFS, Esquimalt  
1 - CANCOMTRAINPAC/CANCOMTRAINRON  
1 - CANCOMDESRON 2

### BRITAIN

4 - DRIC  
Plus distribution  
1 - AMTE  
1 - NAML  
1 - AOL

2 - BDLS

### UNITED STATES

3 - DTIC  
3 - Documentation Centre

### AUSTRALIA

1 - Materials Research Laboratories  
Maribyrnong

### NEW ZEALAND

1 - Defence Scientific Establishment  
HMNZ Dockyard  
Auckland 9, NZ

Unclassified

Security Classification

**DOCUMENT CONTROL DATA - R & D**

(Security classification of title, body of abstract and indexing annotation must be entered when the overall document is classified)

1. ORIGINATING ACTIVITY Defence Research Establishment Pacific FMO Victoria, BC VOS 1B0		2a. DOCUMENT SECURITY CLASSIFICATION <b>UNCLASSIFIED</b>	
		2b. GROUP	
3. DOCUMENT TITLE Crack Initiation and Propagation Properties of HY 130 Steel Weldments Following Temper Embrittlement			
4. DESCRIPTIVE NOTES (Type of report and inclusive dates) DREP Materials Report			
5. AUTHOR(S) (Last name, first name, middle initial)  McRae, K. I.			
6. DOCUMENT DATE September 1982		7a. TOTAL NO. OF PAGES 16	7b. NO. OF REFS 9
8a. PROJECT OR GRANT NO.  26B		9a. ORIGINATOR'S DOCUMENT NUMBER(S)  82-M	
8b. CONTRACT NO.		9b. OTHER DOCUMENT NO.(S) (Any other numbers that may be assigned this document)	
10. DISTRIBUTION STATEMENT Unlimited Distribution			
11. SUPPLEMENTARY NOTES		12. SPONSORING ACTIVITY	
13. ABSTRACT  Elastic-plastic fracture mechanics (EPFM) may be applied to engineering problems to determine material properties related to crack initiation and propagation. Specifically, these concepts have been applied to a study of the "as welded" and temper embrittled weldments of HY 130 steel. The property relating the energy requirement for ductile crack initiation, $J_{Ic}$ or $K_{Ic}$ , is seen to be similar in both instances, although previous Charpy V-notch testing results have indicated large differences in toughness. The sensitivity to embrittlement is reflected, however, by a large difference in the crack propagation property, the tearing modulus, T. The data are also compared to crack initiation and crack propagation energies measured during instrumented impact tests.			

## KEY WORDS

HY 130 steel  
 weldments  
 crack initiation  
 crack propagation  
 temper embrittlement  
 elastic-plastic fracture mechanism  
 ductile cracking

## INSTRUCTIONS

1. **ORIGINATING ACTIVITY:** Enter the name and address of the organization issuing the document.
- 2a. **DOCUMENT SECURITY CLASSIFICATION:** Enter the overall security classification of the document including special warning terms whenever applicable.
- 2b. **GROUP:** Enter security reclassification group number. The three groups are defined in Appendix 'M' of the DRB Security Regulations.
3. **DOCUMENT TITLE:** Enter the complete document title in all capital letters. Titles in all cases should be unclassified. If a sufficiently descriptive title cannot be selected without classification, show title classification with the usual one-capital-letter abbreviation in parentheses immediately following the title.
4. **DESCRIPTIVE NOTES:** Enter the category of document, e.g. technical report, technical note or technical letter. If appropriate, enter the type of document, e.g. interim, progress, summary, annual or final. Give the inclusive dates when a specific reporting period is covered.
5. **AUTHOR(S):** Enter the name(s) of author(s) as shown on or in the document. Enter last name, first name, middle initial. If military, show rank. The name of the principal author is an absolute minimum requirement.
6. **DOCUMENT DATE:** Enter the date (month, year) of Establishment approval for publication of the document.
- 7a. **TOTAL NUMBER OF PAGES:** The total page count should follow normal pagination procedures, i.e., enter the number of pages containing information.
- 7b. **NUMBER OF REFERENCES:** Enter the total number of references cited in the document.
- 8a. **PROJECT OR GRANT NUMBER:** If appropriate, enter the applicable research and development project or grant number under which the document was written.
- 8b. **CONTRACT NUMBER:** If appropriate, enter the applicable number under which the document was written.
- 9a. **ORIGINATOR'S DOCUMENT NUMBER(S):** Enter the official document number by which the document will be identified and controlled by the originating activity. This number must be unique to this document.
- 9b. **OTHER DOCUMENT NUMBER(S):** If the document has been assigned any other document numbers (either by the originator or by the sponsor), also enter this number(s).
10. **DISTRIBUTION STATEMENT:** Enter any limitations on further dissemination of the document, other than those imposed by security classification, using standard statements such as:
  - (1) "Qualified requesters may obtain copies of this document from their defence documentation center."
  - (2) "Announcement and dissemination of this document is not authorized without prior approval from originating activity."
11. **SUPPLEMENTARY NOTES:** Use for additional explanatory notes.
12. **SPONSORING ACTIVITY:** Enter the name of the departmental project office or laboratory sponsoring the research and development. Include address.
13. **ABSTRACT:** Enter an abstract giving a brief and factual summary of the document, even though it may also appear elsewhere in the body of the document itself. It is highly desirable that the abstract of classified documents be unclassified. Each paragraph of the abstract shall end with an indication of the security classification of the information in the paragraph (unless the document itself is unclassified) represented as (TS), (S), (C), (R), or (U).  
  
The length of the abstract should be limited to 20 single-spaced standard typewritten lines, 7½ inches long.
14. **KEY WORDS:** Key words are technically meaningful terms or short phrases that characterize a document and could be helpful in cataloging the document. Key words should be selected so that no security classification is required. Identifiers, such as equipment model designation, trade name, military project code name, geographic location, may be used as key words but will be followed by an indication of technical context.

**END**

**FILMED**

**8-83**

**DTIC**