

MICROCOPY RESOLUTION TEST CHART
NATIONAL BUREAU OF STANDARDS-1963-A

ADA131095

UNCLASSIFIED

SECURITY CLASSIFICATION OF THIS PAGE (When Data Entered)

REPORT DOCUMENTATION PAGE		READ INSTRUCTIONS BEFORE COMPLETING FORM
1. REPORT NUMBER	2. GOVT ACCESSION NO.	3. RECIPIENT'S CATALOG NUMBER
4. TITLE (and Subtitle) CULTURAL RESOURCES LITERATURE SEARCH AND RECORDS REVIEW-UPPER MISSISSIPPI RIVER BASIN; Volume 3-Pool 2		5. TYPE OF REPORT & PERIOD COVERED March 1982-(July?) 1983.
		6. PERFORMING ORG. REPORT NUMBER Reports of Investigation #115
7. AUTHOR(s) David F. Overstreet Robert F. Boszhardt Robert P. Fay Carol I. Mason		8. CONTRACT OR GRANT NUMBER(s) DACW37-82-C-0011
9. PERFORMING ORGANIZATION NAME AND ADDRESS Great Lakes Archaeological Research Center, Inc. P.O. Box 1304 Waukesha, WI 53187		10. PROGRAM ELEMENT, PROJECT, TASK AREA & WORK UNIT NUMBERS
11. CONTROLLING OFFICE NAME AND ADDRESS Army Engineer District, St. Paul 1135 USPO & Custom House St. Paul, MN 55101		12. REPORT DATE
		13. NUMBER OF PAGES 85
14. MONITORING AGENCY NAME & ADDRESS (if different from Controlling Office)		15. SECURITY CLASS. (of this report)
		15a. DECLASSIFICATION DOWNGRADING SCHEDULE
16. DISTRIBUTION STATEMENT (of this Report) Approved for public release; distribution unlimited		
17. DISTRIBUTION STATEMENT (of the abstract entered in Block 20, if different from Report)		
18. SUPPLEMENTARY NOTES In 12 volumes: V. 1-Introduction & narrative; v. 2-Upper & Lower St. Anthony Falls and Pool 1; v. 3-Pool 2; v. 4-Pool 3; v. 5-Pool 4; v. 6-Pool 5 & 5A; v. 7-Pool 6; v. 8-Pool 7; v. 9-Pool 8; v. 10-Pool 9; v. 11-Pool 10; (2 vols) v. 12-Bibliography.		
19. KEY WORDS (Continue on reverse side if necessary and identify by block number) ARCHAEOLOGY MISSISSIPPI RIVER HISTORY ENTHNOGRAPHY BIBLIOGRAPHIES		
20. ABSTRACT (Continue on reverse side if necessary and identify by block number) This literature search and records review of the Upper Mississippi River Basin (River Mile 857.6, above St. Anthony Falls, Minneapolis, St. Paul, Minnesota to Lock & Dam #10, (Guttenberg, Iowa) was authorized by the St. Paul District Corps of Engineers as part of its master plan for the 9-foot navigation project. The objectives of the investigation were to: 1. conduct a comprehensive review of existing records and review published and unpublished literature; 2. provide an evaluation of recorded cultural resources; and 3. prepare a detailed		

DD FORM 1473 1 JAN 73 EDITION OF 1 NOV 65 IS OBSOLETE

UNCLASSIFIED

SECURITY CLASSIFICATION OF THIS PAGE (When Data Entered)

UNCLASSIFIED

SECURITY CLASSIFICATION OF THIS PAGE(When Data Entered)

technical and popular report.

Site-specific information was compiled for both historic and prehistoric sites from state agencies in Iowa, Minnesota, and Wisconsin, and from various local and regional institutions. More than 1,000 historically or architecturally significant sites and districts and, more than 1,400 prehistoric archaeological components were recorded and plotted on base maps. From the site configurations and from other data collected during the course of the records and literature review, a narrative framework for the interpretation of historic and prehistoric sites was developed. Recommendations to enhance the management of the archaeological and historical data base were provided.

Within the boundaries of Pool 2, 10 properties have been listed on the National Register of Historic Places. Among these are two historic districts, the Mendota Historic District and the Fort Snelling Historic District. Thirty-one archaeological sites have been recorded within the limits of the study area adjacent to navigation Pool 2.

UNCLASSIFIED

SECURITY CLASSIFICATION OF THIS PAGE(When Data Entered)

INDEX - POOL 2

Introduction 1

Historical/Architectural Properties Listed on
National Register of Historic Places 2

Mendota Historic District 3

Pool 2 Site Inventory 4

Figure 1: Historic Sites Pool 212

Figure 2: Historic Sites Pool 213

Figure 3: Historic Sites Pool 214

Figure 4: Historic Sites Pool 215

Figure 5: Historic Sites Pool 216

Figure 6: Historic Sites Pool 217

Figure 7: Historic Sites Pool 218

Prehistoric Site Inventory19

Figure 8: Archaeological Sites Pool 279

Figure 9: Archaeological Sites Pool 280

Figure 10: Archaeological Sites Pool 281

Figure 11: Archaeological Sites Pool 282

Figure 12: Archaeological Sites Pool 283

Figure 13: Archaeological Sites Pool 284

Figure 14: Archaeological Sites Pool 285



Accession For	
NTIS GRA&I	X
DTIC TAB	
Unannounced	
Justification	
By _____	
Distribution/	
Availability Codes	
Dist	Avail and/or Special
A	

INTRODUCTION:

Within the boundaries of Pool 2, 10 properties have been listed on The National Register of Historic Places. Among these 10 are 2 historic districts, The Mendota Historic District and The Fort Snelling Historic District. Individual structures for the districts are listed in the appended tabular data. Figures 1-7 provide locations for structures that have been noted as architecturally or historically significant.

Thirty-one archaeological sites have been recorded within the limits of the study area adjacent to navigation Pool 2. Table 1 provides a matrix for identified components, Figures 8-14 note the locations of these archaeological sites, and the data sheets for each site provide more specific information. It should be noted that site distributions are not based on comprehensive systematic survey and thus should not be used for predictive statements. Finally, sites categorized as ineligible unless specifically noted, means simply that they have not been evaluated in terms of National Register criteria.

TABLE 1: IDENTIFIED COMPONENTS - ARCHAEOLOGICAL SITES

POOL: 2

	Early	Late	Unidentified	
Paleo-Indian				
	Early	Middle	Late	Unidentified
Archaic				2
	Early	Middle	Late	Unidentified
Woodland	1	5	4	21
	Upper	Middle		Mound
Mississippian	2			
	Aboriginal	Euro-American		Unidentified
Historic	2	3		

Total Components: 40

INTRODUCTION:

Within the boundaries of Pool 2, 10 properties have been listed on The National Register of Historic Places. Among these 10 are 2 historic districts, The Mendota Historic District and The Fort Snelling Historic District. Individual structures for the districts are listed in the appended tabular data. Figures 1-7 provide locations for structures that have been noted as architecturally or historically significant.

Thirty-one archaeological sites have been recorded within the limits of the study area adjacent to navigation Pool 2. Table 1 provides a matrix for identified components, Figures 8-14 note the locations of these archaeological sites, and the data sheets for each site provide more specific information. It should be noted that site distributions are not based on comprehensive systematic survey and thus should not be used for predictive statements. Finally, sites categorized as ineligible unless specifically noted, means simply that they have not been evaluated in terms of National Register criteria.

TABLE 1: IDENTIFIED COMPONENTS - ARCHAEOLOGICAL SITES

POOL: 2

	Early	Late	Unidentified		
Paleo-Indian					
	Early	Middle	Late	Unidentified	
Archaic				2	
	Early	Middle	Late	Unidentified	Mound
Woodland	1	5	4	21	20
	Upper	Middle			
Mississippian	2				
	Aboriginal	Euro-American		Unidentified	
Historic	2	3			

Total Components: 40

Cultural Resources Literature Search and Records Review of the Upper Mississippi River Basin

County: RAMSEY, & WASHINGTON State: MN

POOL 2 - HISTORIC/ARCHITECTURAL PROPERTIES LISTED ON THE NRHP

Community/Township	Address/Legal Description	Site	NR Date	Map Code
Dakota County				
Nininger	9965 124th Street	Good Templars Hall (School District 24) (1858)	12/31/79	11
Inver Grove Hts.	9091 Inver Grove Trail	R. Freeman House (c.1875)	12/31/79	31
South St. Paul	200 North Concord Street	Stockyards Exchange Building (1887)	3/7/79	36
Mendota Hts.	S. bank of the Mississippi R. at its confluence with Minn. R.	Mendota Historic District	6/22/70	54
Mendota Hts.	In Mendota Historic District	Henry Hastings Sibley House (1835-40)	1/20/72	54
Fort Snelling & Mendota Hts.	STH 55 across Minnesota River	Fort Snelling-Mendota Bridge (1925-26)	12/1/78	57
Hennepin County				
Fort Snelling	At junction of the Mississippi and Minnesota Rivers	Fort Snelling Historic District (1918-present) NHL	12/19/69	60
Ramsey County				
St. Paul	Smith Avenue at Mississippi R.	Smith Avenue High Bridge (No. 5753)	8/6/81	73
St. Paul	1 South Wabasha Street	Minnesota Boat Club Boathouse on Raspberry Island	2/4/81	74
Washington County				
Cottage Grove Twp.	10398 Grey Cloud Island Trail T27N-R21W-30 NWk	Grey Cloud Lime Kiln (c. 1850-1900)	12/18/78	91

Cultural Resources Literature Search and Records
Review of the Upper Mississippi River Basin

County: DAKOTA

State: MN

POOL 2 - Site Inventory

Community/Township	Address/Legal Description	Site	Map Code
1/3 miles above Hastings, MN Nininger Twp. T115N - R17W	Mississippi River Mile 815.2	U.S. Lock and Dam No. 2 (1930, 1948)	1
"	13120 Lock Blvd. E.	Harry Benjamin House (c. 1875)	2
"	12900 Lock Blvd. E., bottom of ravine along S. bank of river	Man-made Cave (c. 1870's)	3
"	10098 125th Street E.	Peter Stevens House (c. 1856)	4
"	12425 Jason Avenue E.	Paul Odman House (c. 1856)	5
"	12172 Jason Avenue E.	Carl Bloomstrand House (1920)	6
"	12174 Jason Avenue E.	Stephen Bloomstrand House (1900)	7
"	12170 Jason Avenue E.	Theodore Chamberlain House (1880)	8
"	W. of Jason Avenue E. along the S. bank of the Mississippi R.	Man-made Cave (c. 1850's)	9
"	993 124th Street E.	Richard Guelcher House (c. 1880)	10
"	N. of 123rd Street E.	Horton Jeremy House (1916)	12
"	N. of 123rd Street E.	Sawmill site "Truax Mill" (c. 1850's)	13
"	140th Street E.	Oakwood Cemetery	14
"	9859 140th Street E.	Theodore Chamberlain House (1908)	15
Nininger Nininger Twp. T115N - R18W	T115N-R17W-18 & T115N-R18W-13 W. of 140th Street E.	Nininger Townsite (c. 1856-1860's) St. Paul Southern & Electric R.R. grade (c. 1910-30)	16 17

Cultural Resources Literature Search and Records Review of the Upper Mississippi River Basin.

County: DAKOTA State: MN

POOL 2 - Site Inventory

Community/Township	Address/Legal Description	Site	Map Code
T115N - R18W Nininger Twp.	9620 132nd Street E.	Harold Chamberlain House (c. 1916)	18
"	12905 Inga Avenue	Loren Sorg House (c. 1885)	19
"	In Dakota City Park. Near river	Cellar remains. Blakely Homestead (1853)	20
"	Near W. bank of Mississippi R. River edge at end of Hireray Path extension	Natural Cave McCarrell's flour mill & house site (c. 1860)	21 22
"	13569 Mississippi Trail	Loren Sorg House (1875)	23
"	S. of Mississippi Trail	Methodist Church site & cemetery (c. 1850's)	24
"	14009 Mississippi Trail	Frank Bauer House (1900)	25
"	14181 Mississippi Trail	John Bremer House (c. 1870)	26
"	7635 Mississippi Trail	Herb Volkert House (c. 1904)	27
"	7918 150th Street E.	Robert Rotty House (1918)	28
"	15125 Hogan Avenue	Herb Bauer House (1900)	29
Inver Grove Hts.	T27N - R22W-34 & 35 Above Mississippi River Mile 830 connecting St. Paul Park (Washington County) and Inver Grove Hts. (Dakota County)	Pine Bend Townsite (1852-1857)	30
"		Hwy. and R.R. Truss Bridge #5600 (1895)	32
"	6466 Delaney Way	House (c. 1880's)	33

Cultural Resources Literature Search and Records Review of the Upper Mississippi River Basin	County: DAKOTA/RAMSEY State: MN
---	--------------------------------------

POOL 2 - Site Inventory

Community/Township	Address/Legal Description	Site	Map Code
South St. Paul	445 2nd Avenue S.	Croatian Hall (c. 1920)	34
"	Between Concord Ave. & river	Armour Mear Packing Plant (1928)	35
"	106 3rd Avenue N.	Veterans Memorial Library (South St. Paul Public Library) (1927)	37
"	Concord Ave. & Industrial Rd.	Swift and Company (?)	38
"	350 5th Avenue N.	St. Stefans Orthodox (Roumanian) Church (1924)	39
"	1023 Highland Avenue	Clark House (?)	40
"	744 Stewart Lane	Gov. Harold I. Stassen House (?)	41
"	Central Ave. & 10th Avenue N.	Concrete (or stone?) Building (?)	42
"	1009 N. Concord	Brick Commercial Building (?)	43
"	15th Avneue N. at Bryant	Clark Memorial United Church of Christ (?)	44
"	915 18th Avenue N.	Brick House (?)	45
"	926 18th Avenue N.	Brick House (?)	46
"	831 17th Avenue N.	Kockendorfer House (?)	47
"	Stickney Ave. at Bircher St.	Frame House (?)	48
West St. Paul	Stryker Ave. & Annapolis St., SW corner	Commercial Building (?)	49
"	763 Dodd Rd.	Philip Crowley House (c. 1870)	50

Cultural Resources Literature Search and Records
Review of the Upper Mississippi River Basin

County: DAKOTA, RAMSEY, &
HENNEPIN State: MN

POOL 2 - Site Inventory

Community/Township	Address/Legal Description	Site	Map Code
West St. Paul	830 Charlton	Sweeney House (framed-over log cabin) (?)	51
Mendota Hts.	1160 Dodd Rd.	Staples House (?)	52
"	Dodd Rd. at Emerson Avenue	School (1936)	53
"	Pilot Knob Rd.	Acacia Park Cemetery	55
"	Pilot Knob Rd.	Acacia Park Cemetery House (?)	56
Fort Snelling (A)	Picnic Island in Minnesota R.	Cantonment New Hope (21-DK-24) (1819)	58
"	Below Fort Snelling Minneapolis Twp.	Mendota Ferry Site (early 1840's)	59
"	T28N - R23W-20, 21, 28, & 29	City of Fort Snelling Townsite (1857)	61
" (E)	At junction of Miss. & Minn. R. 1 mile above Mississippi & Minnesota confluence	Fort Snelling Cemetery (1821-1900)	62
"		Camp Cold Water site (1820)	63
Minneapolis *(E)	East 51st St. & Minnehaha Ave. about 1 mile upstream from Ft. Snelling, T28N-R23W-17, E Bank	Minnesota's Soldier's Home (1888-present)	64
St. Paul		Rumtown Townsite (c. 1850 or earlier)	65
Minneapolis - Paul	Below Fort Snelling	Fort Snelling Ferry Site (late 1840's)	66
"	Above River Mile 845 & Below Fort Snelling	Fort Snelling Bridge #1 Site (1879-1909)	67
"	Above River Mile 845 & Below Fort Snelling	Fort Snelling Bridge #2 Site (1908-1962)	68
St. Paul	Pike Island, NW side	Zebulon Pike encampment site (1805)	69

* includes 18 extant structures (administration buildings, dining hall and kitchen, infirmary, carpenter shop, laundry, power plant, chapel, etc.) and 13 buildings (hospital, power house, pavillion, ice house, etc.) no longer standing.

Cultural Resources Literature Search and Records
Review of the Upper Mississippi River Basin

County: RAMSEY & WASHINGTON State: MN

POOL 2 - Site Inventory

Community/Township	Address/Legal Description	Site	Map Code
St. Paul	Pike Island, SW side	J.R. Faribault Homestead (c. 1822)	70
"	Pike Island, SW side	Anderson Trading Post	71
"	Mississippi River Mile 841.4 Across Raspberry Island at	Omaha Bridge (C.M. St. P. & P. R.R. Bridge #15)	72
" (E)	Mississippi River Mile 839.5	Wabasha Street Bridge	75
" (E)	Upstream from the Smith Avenue High Bridge across Miss. River	Chicago, Great Western Railway Co. Aerial Lift Bridge	76
" (E)	Mississippi River Mile 839 Pigs Eye Island	Robert Street Bridge	77
"	Mississippi River Mile 836	Pigs Eye Townsite (1838)	78
Newport	4th Ave. & 6th St. SW corner	House (?)	79
"	6th Ave. & 12th St.	House (c. 1890)	79
"	239 7th Ave.	Greek Revival House (c. 1850-60)	79
"	295 7th Ave.	House (?)	79
"	405 7th Ave.	Newport Public Library (1860-70)	79
"	700 Block 7th Ave.	Frame House (c. 1860)	79
"	701 7th Ave.	Italiane House (c. 1870's)	79
"	3rd St. NW corner	House (?)	79
"	7th Ave. & 3rd St. SW corner	House (?)	79

Cultural Resources Literature Search and Records Review of the Upper Mississippi River Basin	County: WASHINGTON State: MN
---	------------------------------

POOL 2 - Site Inventory

Community/Township	Address/Legal Description	Site	Map Code
Newport	7th Ave. & 3rd St.	Italianate House (c. 1870's)	79
"	7th Ave. & 12th St. NW corner	House (?)	79
"	331 7th St.	William R. Brown House (?)	79
"	323 Park Place	House (?)	79
"	11th & Woodbury	Red Rock Mission (1839)	80
"	Hwy. 61 and 11th St.	C.M. St. P. & P. R.R. Switching Tower (1904)	81
T27N - R21W Cottage Grove Twp	6192 65th St.	Cowell House (?)	82
"	8919 70th St. S.	(Dubisan) Schmaltz Farm (c. 1870)	83
St. Paul Park	1108 Ashland	House (?)	84
"	Broadway and First	Old Tannery Building (?)	84
"	Broadway and First	Old Brass Factory (?)	84
"	Broadway and Main	Industrial Building (?)	84
"	Broadway and Main	Industrial Building (?)	84
"	Broadway and 3rd	I.O.O. 7 Lodge (1890)	84
"	3rd Ave.	Oil Refinery (?)	84
"	3rd St. and 7th Ave. SW corner	House (?)	84

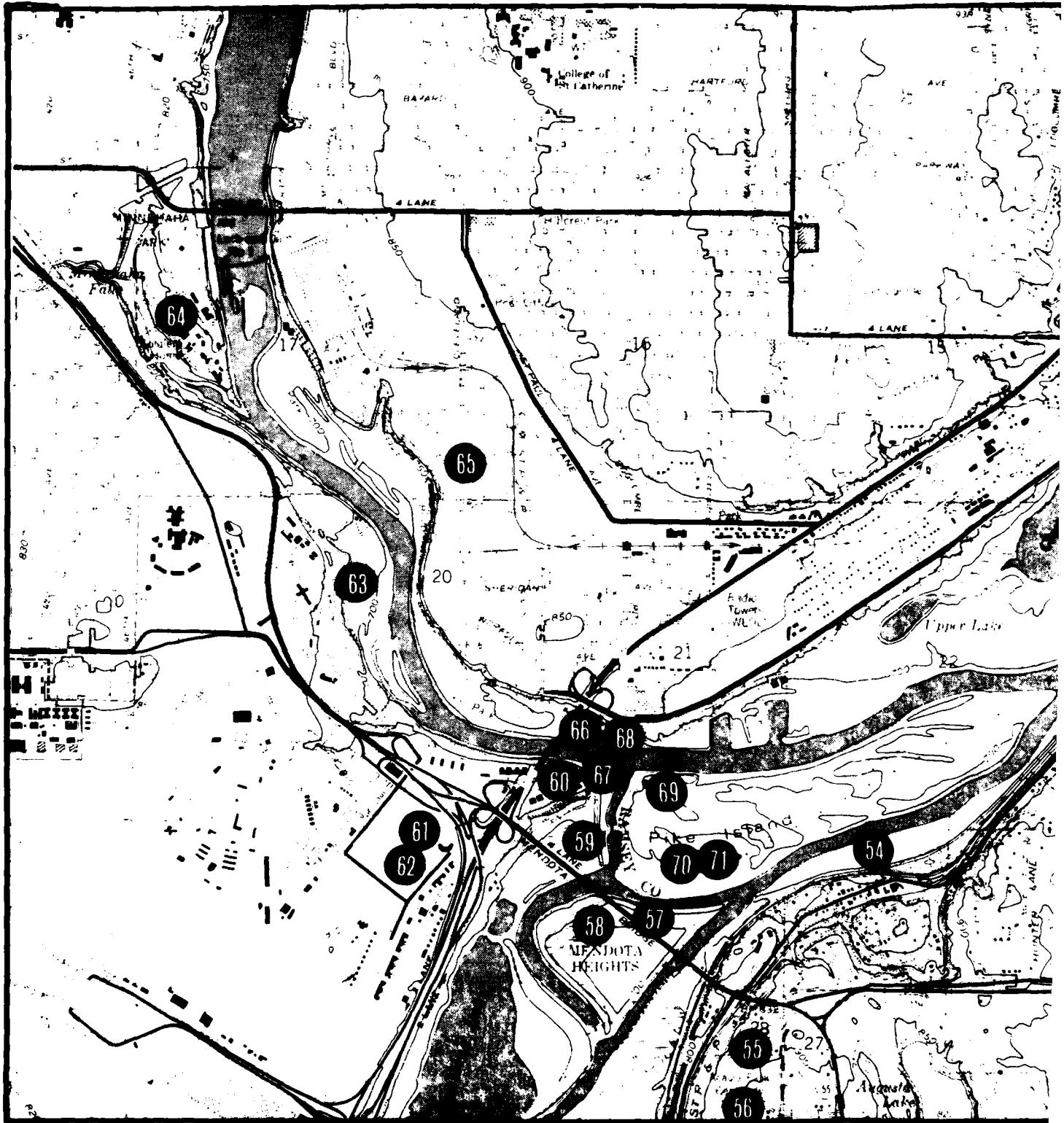
Cultural Resources Literature Search and Records
Review of the Upper Mississippi River Basin

County: Washington State: MN

POOL 2 - Site Inventory

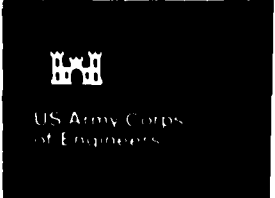
Community/Township	Address/Legal Description	Site	Map Code
St. Paul Park	4th St. and 7th Ave.	House (?)	84
"	701 Portland	House (?)	84
"	728 Portland	House (?)	84
"	612 Summit Ave	Italianate House (c. 1870's)	84
"	624 Summit Ave.	House (?)	84
"	715 Summit Ave.	House (?)	84
"	800 Summit Ave.	House (?)	84
"	845 Summit Ave.	House (?)	84
"	No address given	House (?)	84
Cottage Grove Twp.	T27N-R21W-9 NE½ W. side of Island Ave.	Town Hall at Langdon	85
"	T27N-R21W-21 SE½ 96th St. & Isleton Ave.	School (Union Hall O.C.A.W. Local) at Langdon	86
"	* Upper Grey Cloud Island T27N-R22W-24 SE½	One-room log cabin (former Boy Scout 'camp) (1950's)	87
"	* (A) T27N-R22W-25 SW½ Upper Grey Cloud Island	Historic Artifact Scatter (?)	88
"	* Lower Grey Cloud Island T27N-R22W-25 SE½	Recently Abandoned Farmhouse (?)	89
"	* Lower Grey Cloud Island Lower Grey Cloud Island	Abandoned House & Cellar Depressions?	90
"	* (A) T27N-R21W-31 NW½	Historic Artifact Scatter (?)	92

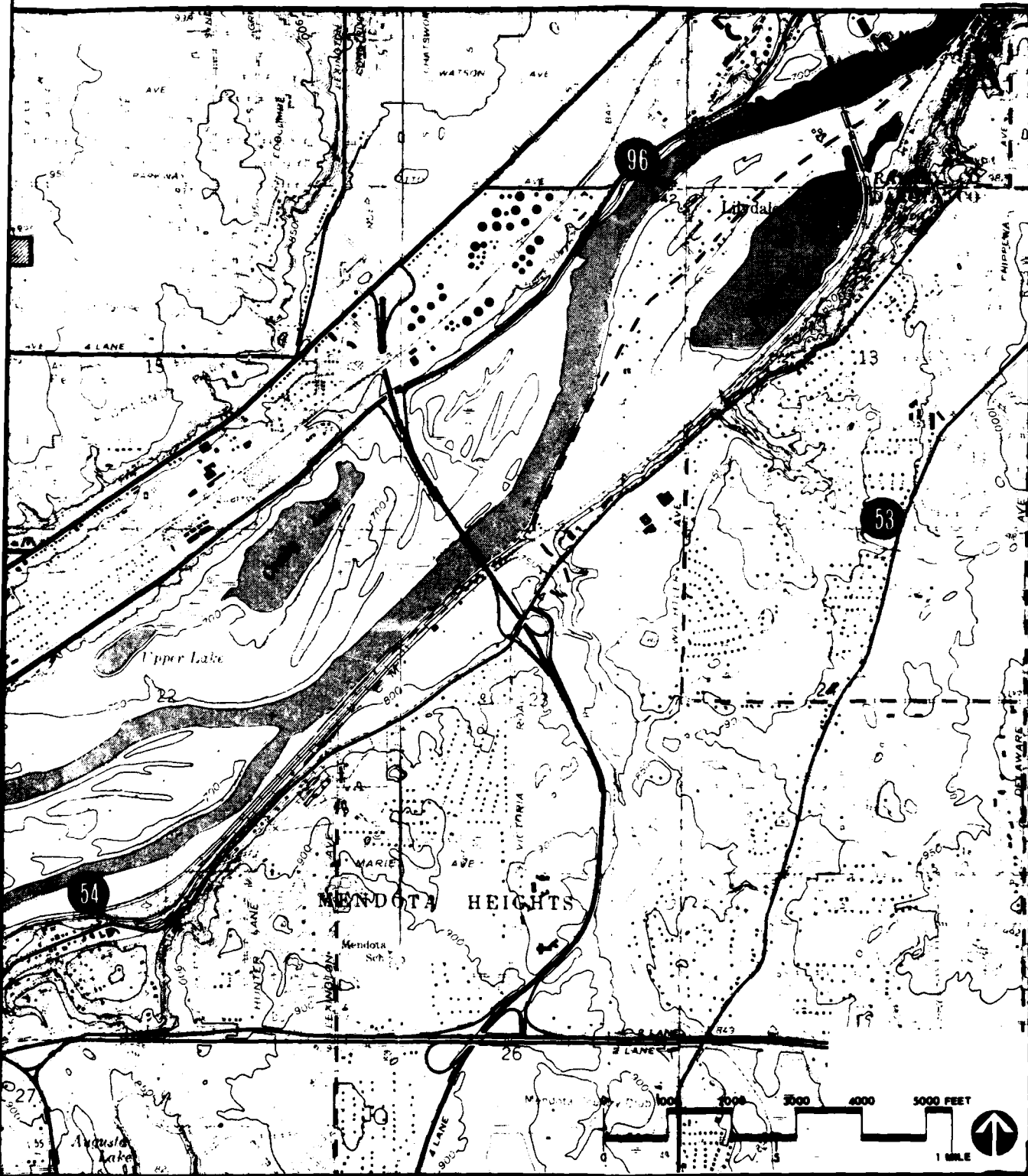
* see Birk 1972 for details



Master Plan for Public
Use Development and
Resource Management
Upper Mississippi River

Legend **FIGURE 1**
HISTORIC SITES-POOL 2





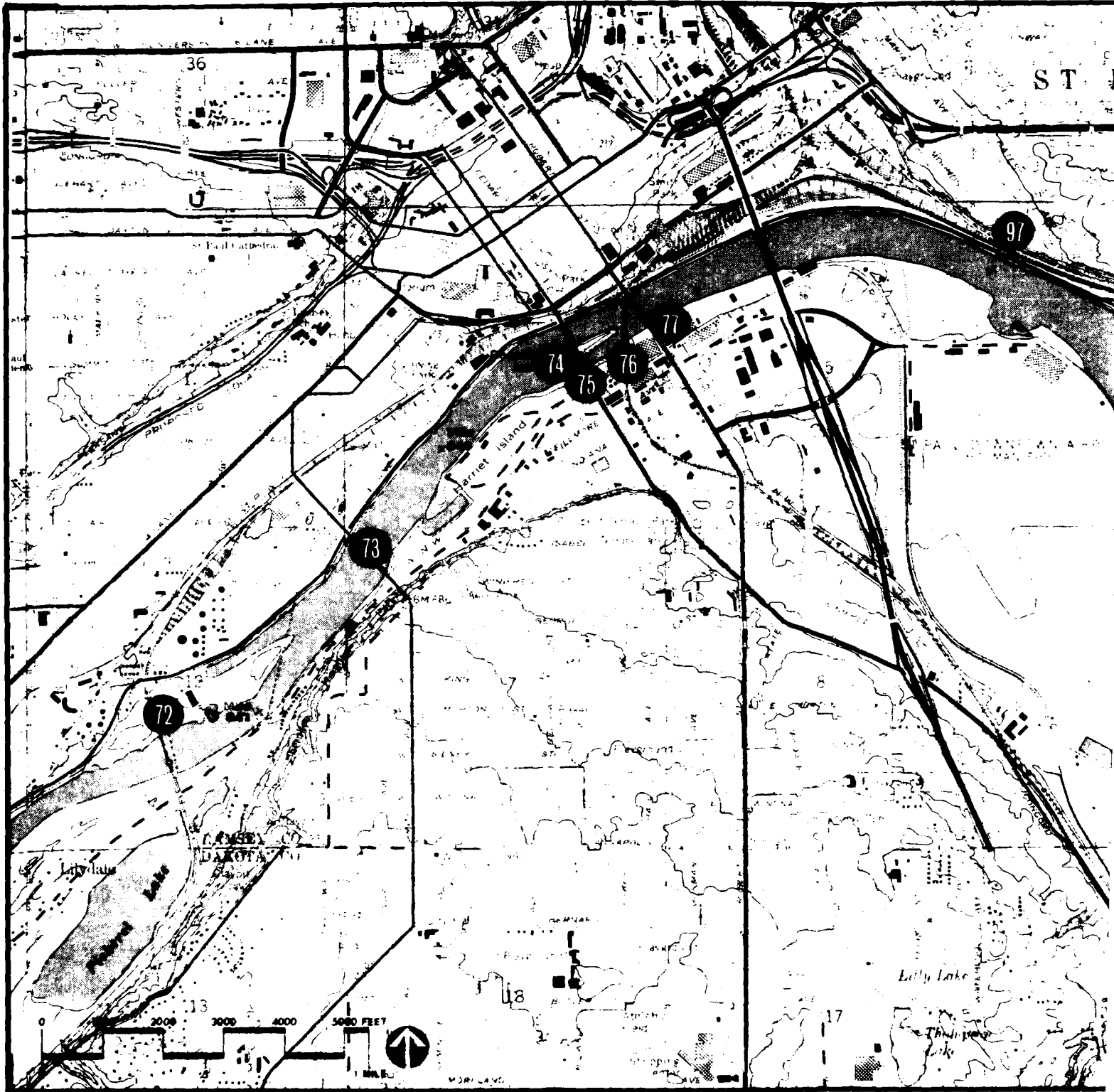
US Army Corps
of Engineers

Drawn by: _____
 Checked by: _____
 Submitted by: _____
 Approved by: _____

L & D 1 Mile 841.0-848.4


12

2

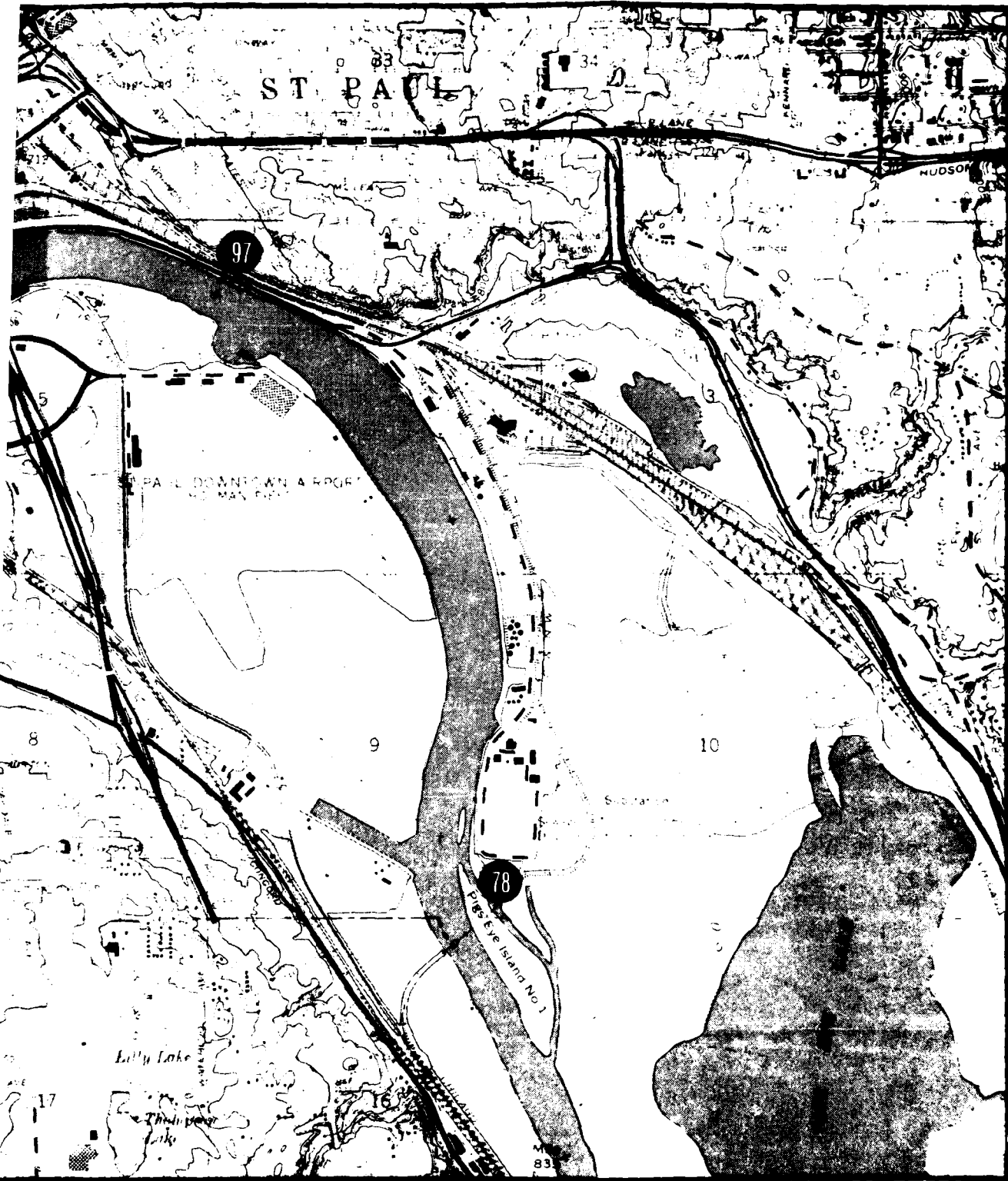



Master Plan for Public
Use Development and
Resource Management
Upper Mississippi River

Legend
FIGURE 2:
HISTORIC SITES-POOL 2


US Army Corps
of Engineers

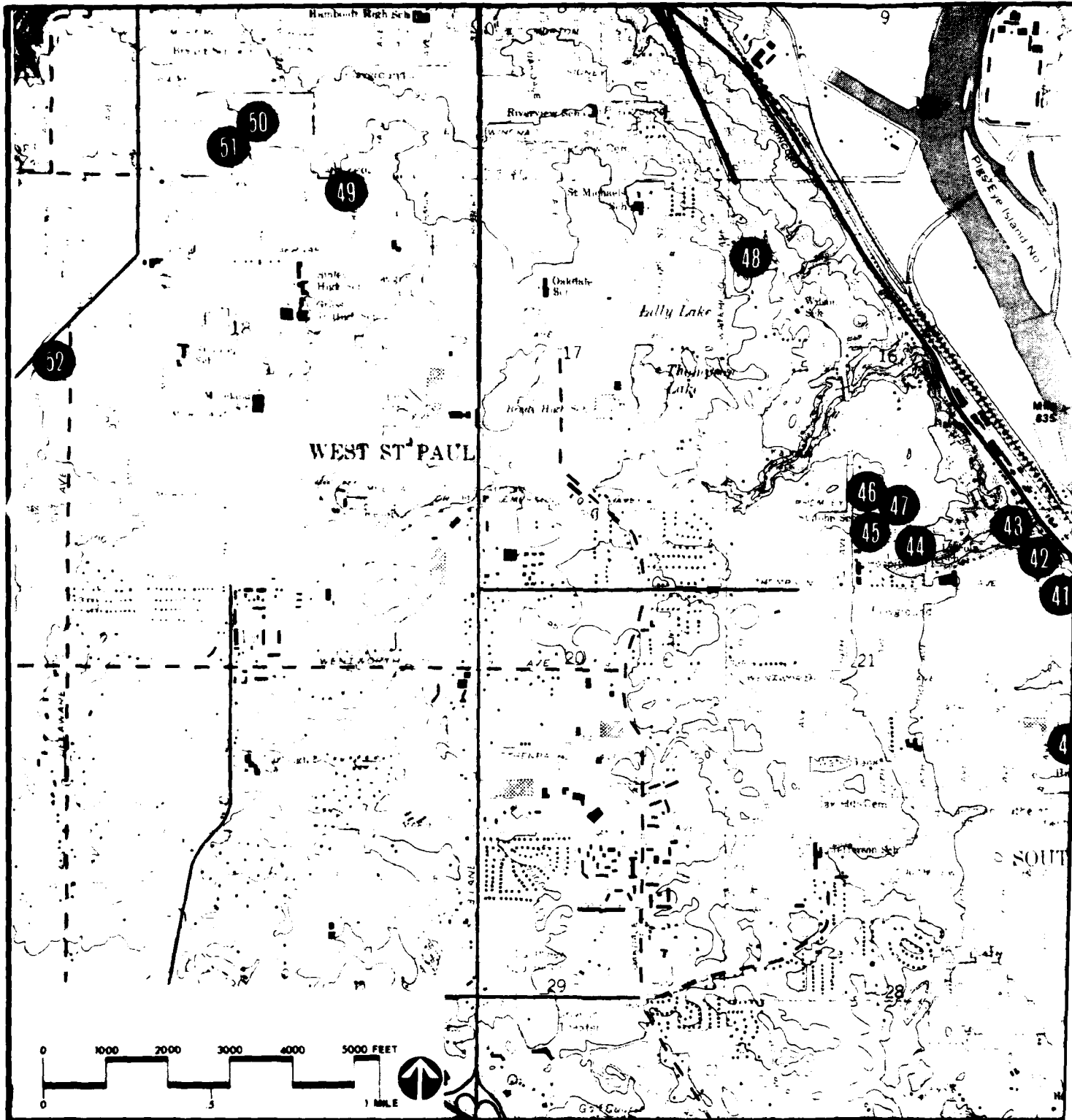
Draw
Cher
Sub
App




 US Army Corps
 of Engineers

Drawn by	_____
Checked by	_____
Submitted by	_____
Approved by	_____

Pool 2 Mile 835.0-842.0 13



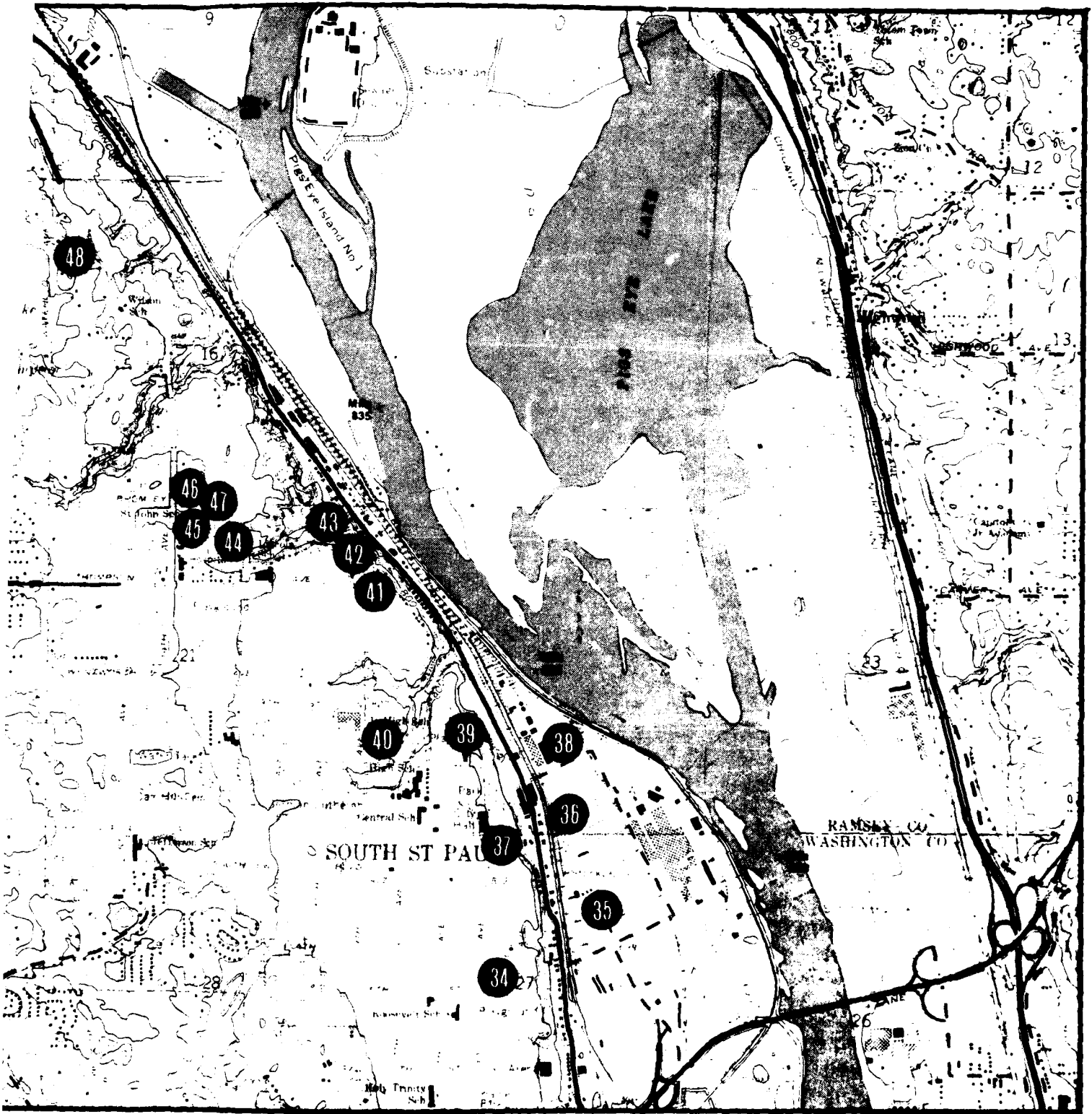
Master Plan for Public
Use Development and
Resource Management
Upper Mississippi River

Legend


FIGURE 3
HISTORIC SITES-POOL 2



US Army Corps
of Engineers

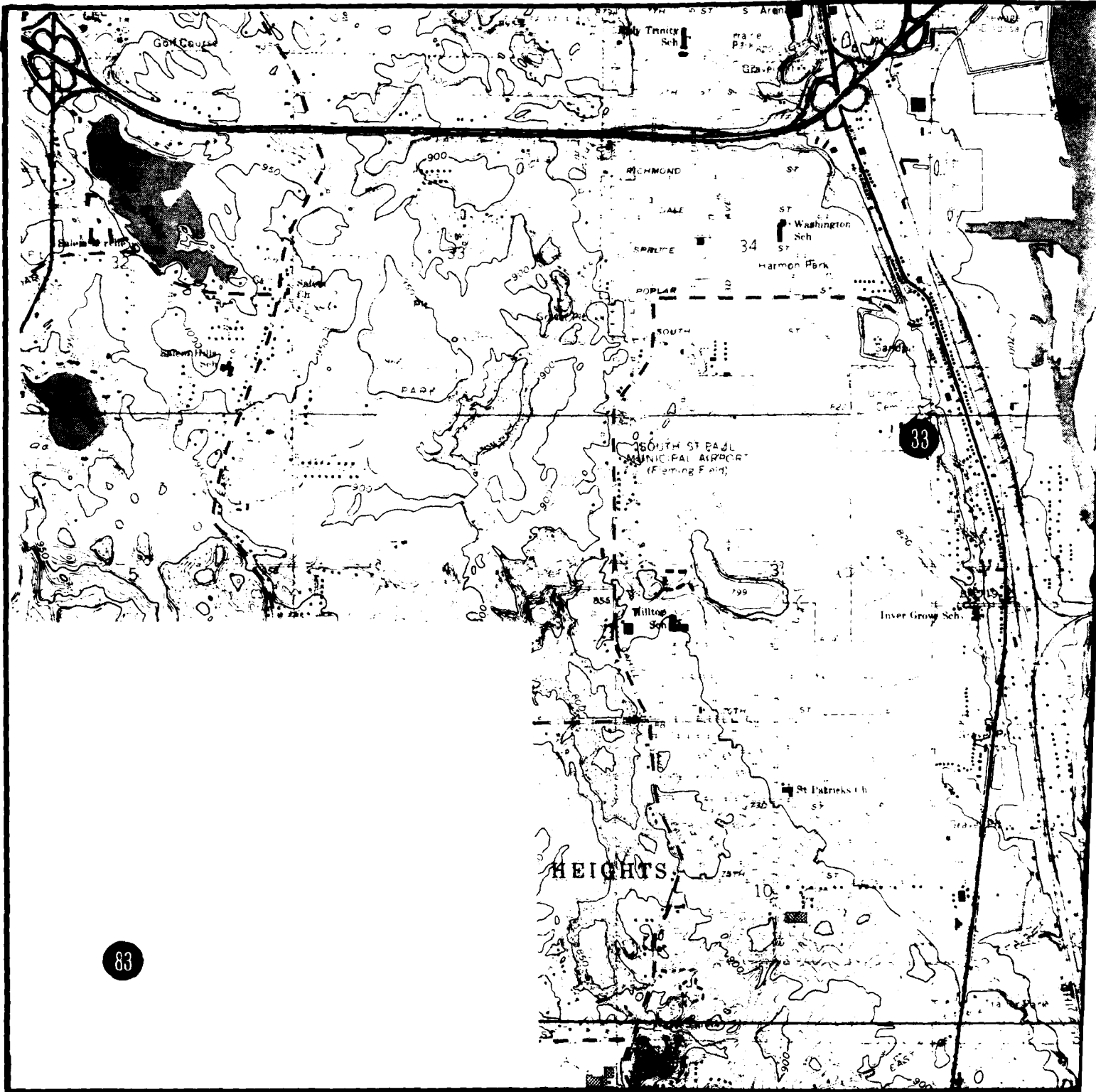


POOL 2


 US Army Corps
 of Engineers

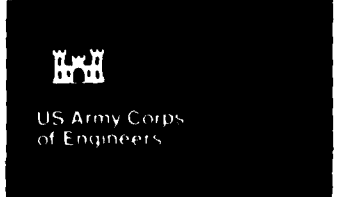
Drawn by _____
 Checked by _____
 Submitted by _____
 Approved by _____

Pool 2 Mile 832.1-836.0 14



Master Plan for Public
 Use Development and
 Resource Management
Upper Mississippi River

Legend **FIGURE 4**
HISTORIC SITES-POOL 2





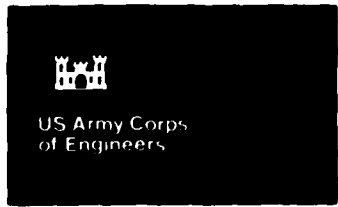
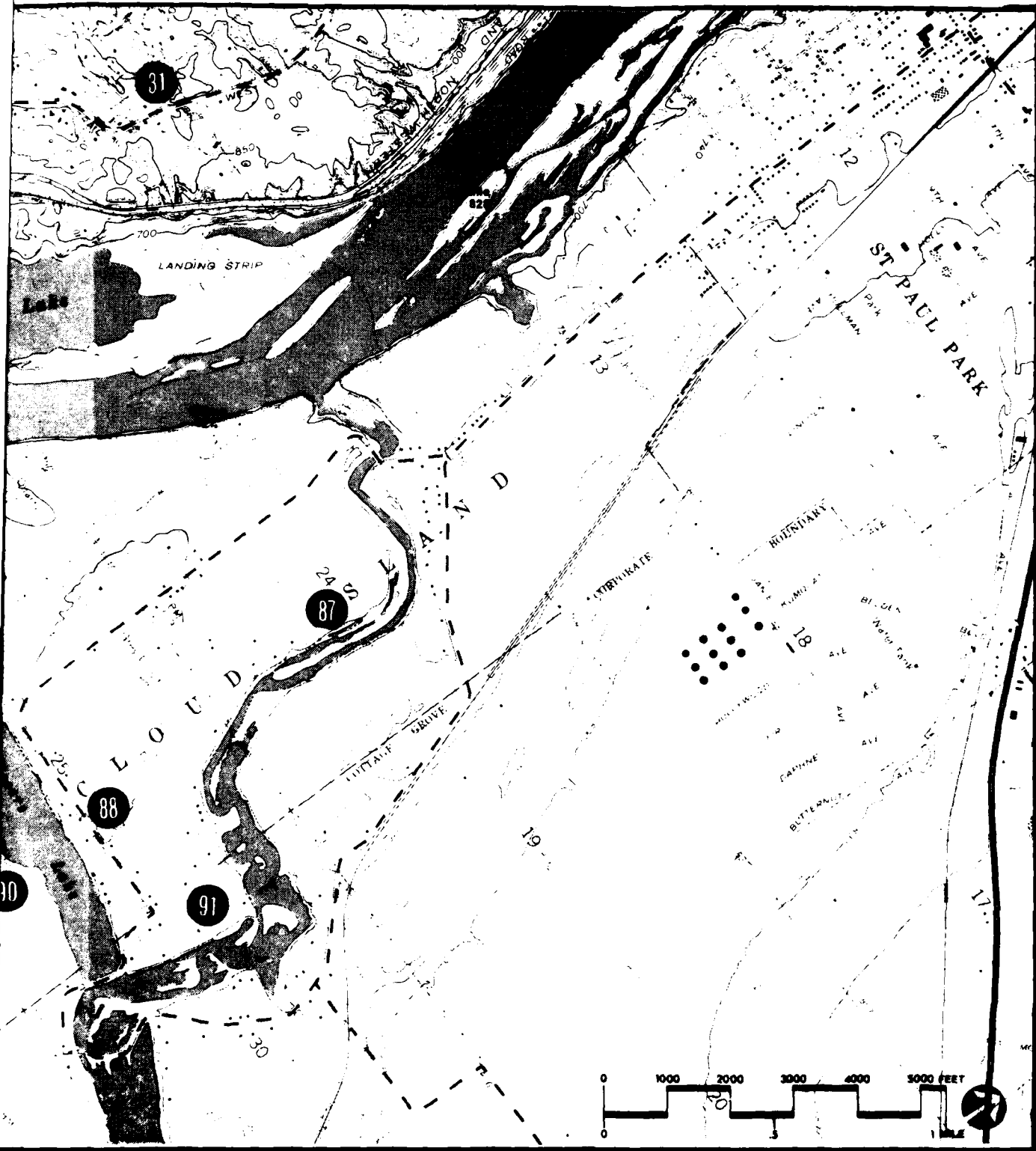
Master Plan for Public
Use Development and
Resource Management
Upper Mississippi River

Legend

FIGURE 5
HISTORIC SITES-POOL 2

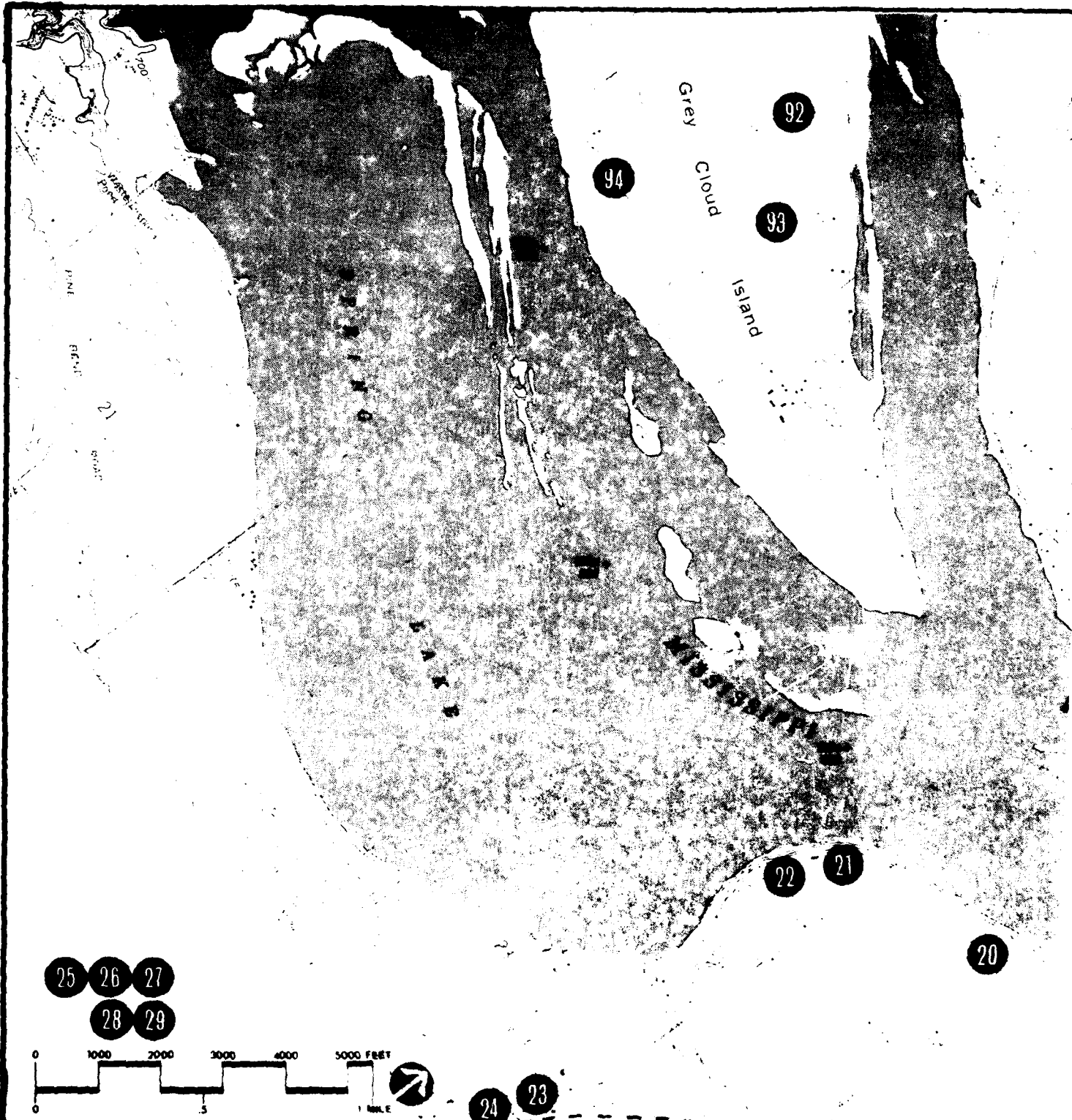


US Army Corps
of Engineers



Drawn by _____
 Checked by _____
 Submitted by _____
 Approved by _____

Pool 2 Mile 822.7-828.8 16

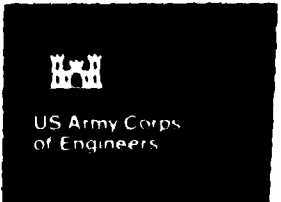


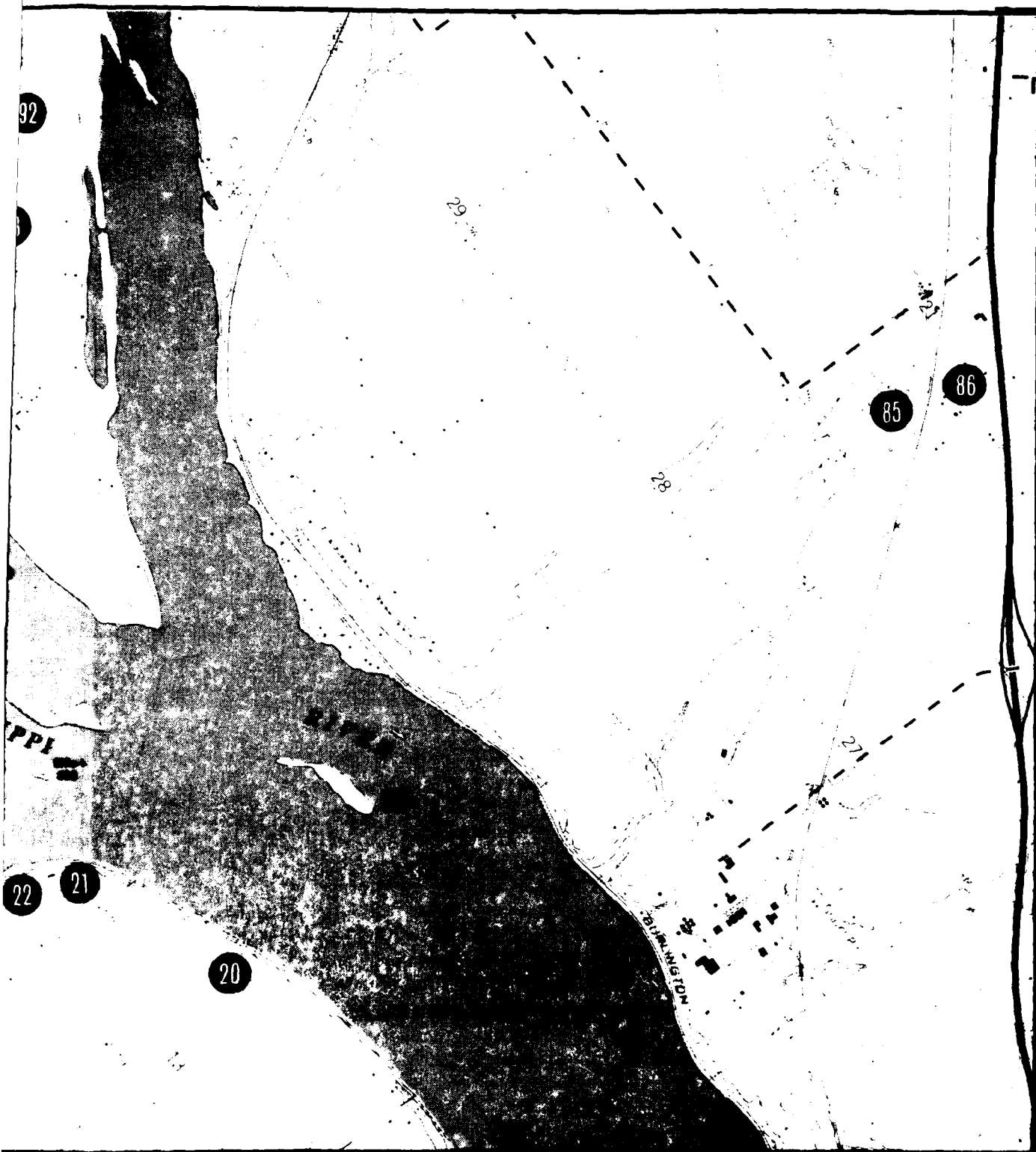
Master Plan for Public
 Use Development and
 Resource Management
Upper Mississippi River

Legend

FIGURE 6

HISTORIC SITES-POOL 2





US Army Corps
of Engineers

Drawn by _____

Checked by _____

Submitted by _____

Approved by _____

Pool 2

Mile 818.0-822.9

17



Master Plan for Public
Use Development and
Resource Management
Upper Mississippi River

Legend

FIGURE 7:
HISTORIC SITES-POOL 2



US Army Corps
of Engineers



US Army Corps
of Engineers

Drawn by _____
 Checked by _____
 Submitted by _____
 Approved by _____

L & D 2 Mile 814.0-818.2

18

Map # 1(80) State Codification # RA 10 County Ramsey (MN)

Site Name: Indian Mounds Park

Legal Description: Township & Range T28N, R22W Civil Township St. Paul

Section Location: NE $\frac{1}{4}$, NW $\frac{1}{4}$, Sec 4

Present Owner: Public

Address: _____

Recorded By: (name & date) S. Anfinson 1977

Geographic/Topographic setting: Bluff top above Mississippi River

Water Source: Mississippi River ; Distance from site _____

Elevation: _____ Drainage System Mississippi

Site Type: Mounds (17)

Size: Approx. 20 Acres , Soil Type: _____

Cultural Affiliation (s): "Hopewellian"

Chronology: _____

Bibliographic references: Winchell, 1911 pp 261-263 The Aborigines of Minnesota; Woolworth, and historical study & a cultural resources survey of Indian Mounds Park

Map References: St. Paul E., 7.5' Quad

Location of Collections: Macalester College

National Register Status:

On Register _____, Determined eligible _____, ineligible x

Remarks:

Map # 2 (80) State Codification # RA - 1 County Ramsey (MN)

Site Name: _____

Legal Description: Township & Range T28 N, R22 W Civil Township St. Paul

Section Location: SW ¼/NW ¼, W½ of Sec 11

Present Owner: _____

Address: _____

Recorded By: (name & date) _____

Geographic/Topographic setting: Next to Mississippi River

Water Source: Mississippi River ; Distance from site _____

Elevation: _____ Drainage System Mississippi River

Site Type: 2 Mounds

Size: _____, Soil Type: _____

Cultural Affiliation (s): Woodland

Chronology: _____

Bibliographic references: _____

Map References: Lewis, No. 3, p21, St. Paul E., 7.5' Quad

Location of Collections: _____

National Register Status:

On Register _____, Determined eligible _____, ineligible x _____

Remarks:

Map # 3 (80) State Codification # RA - 2 County Ramsey (MN)

Site Name: Pigs Eye Island

Legal Description: Township & Range T28 N R22W Civil Township St. Paul

Section Location: NE $\frac{1}{4}$ of NE $\frac{1}{4}$ Sec 16

Present Owner: _____

Address: _____

Recorded By: (name & date) _____

Geographic/Topographic setting: On island in Mississippi River

Water Source: Mississippi ; Distance from site _____

Elevation: 705 ft. Drainage System Mississippi

Site Type: Mound

Size: _____, Soil Type: _____

Cultural Affiliation (s): Woodland

Chronology: _____

Bibliographic references: _____

Map References: Lewis no. 3, p8, St. Paul E., 7.5' Quad

Location of Collections: _____

National Register Status:

On Register _____, Determined eligible _____, ineligible X _____

Remarks: Completely Destroyed

POOL 2

Map # 4 (80) State Codification # RA - 4 County Ramsey (MN)

Site Name: West St. Paul Group

Legal Description: Township & Range T28 N R22W Civil Township St. Paul

Section Location: NE 1/4 of NW 1/4 of Sec 8

Present Owner: _____

Address: _____

Recorded By: (name & date) _____

Geographic/Topographic setting: Near Mississippi, destroyed by homes & streets

Water Source: Mississippi River ; Distance from site _____

Elevation: _____ Drainage System Mississippi

Site Type: Mounds (group of 16)

Size: Approx. 9 Acres , Soil Type: _____

Cultural Affiliation (s): Woodland

Chronology: _____

Bibliographic references: _____

Map References: Lewis, No. 1, p 1; Winchell, 1911, Aboriginies of Minnesota, p261- , St. Paul E., 7.5' Quad

Location of Collections: _____

National Register Status:

On Register _____, Determined eligible _____, ineligible X

Remarks: Destroyed by homes and development

Map # 5 (80) State Codification # RA - 5 County Ramsey (MN)

Site Name: _____

Legal Description: Township & Range T29 N R22 W Civil Township St. Paul

Section Location: NW ¼ of SE ¼ Sec 32

Present Owner: _____

Address: _____

Recorded By: (name & date) _____

Geographic/Topographic setting: Bluff above Mississippi River

Water Source: Mississippi River ; Distance from site _____

Elevation: _____ Drainage System Mississippi River

Site Type: Mounds (group of 19)

Size: Approx. 10 Acres , Soil Type: _____

Cultural Affiliation (s): Woodland

Chronology: _____

Bibliographic references: _____

Map References: Lewis, No. 1, p51; Winchell, 1911, Aboriginies of

Minnesota p 265, St. Paul E., 7.5' Quad

Location of Collections: _____

National Register Status:

On Register _____, Determined eligible _____, ineligible X _____

Remarks:

Destroyed by I-94 construction

Map # 6 (84) State Codification # 21 DK 1 County Dakota (MN)

Site Name: Sorg Site

Legal Description: Township & Range T115 N, R18 W Civil Township Hastings

Section Location: NE 1/4 of NE 1/4 of Sec 23

Present Owner: Loren Sorg

Address: Route 2, Hastings, Minnesota

Recorded By: (name & date) _____

Geographic/Topographic setting: Next to Spring Lake

Water Source: Spring Lake ; Distance from site _____

Elevation: _____ Drainage System Mississippi River

Site Type: Habitation

Size: Approx. 4 Acres , Soil Type: _____

Cultural Affiliation (s): Zone I - Middle Woodland; Hopewellian;

Zone II - Late Woodland

Chronology: _____

Bibliographic references: Johnson, 1959, "Sorg Site" Spring Lake

Archaeology Science Bul

Map References: St. Paul Park, 7.5' Quad.

Location of Collections: S M M Acc #2126

National Register Status:

On Register _____, Determined eligible _____, ineligible X _____

Remarks: Excavations by E. Johnson 1959

Map # 7 (84) State Codification # DK - 2 County Dakota (MN)

Site Name: Lee Mill Cave

Legal Description: Township & Range T115 N R18 W Civil Township Hastings

Section Location: NE ¼ of SE ¼ Sec 14

Present Owner: _____

Address: _____

Recorded By: (name & date) _____

Geographic/Topographic setting: Next to Spring Lake

Water Source: Spring Lake; Distance from site Mississippi River

Elevation: _____ Drainage System Mississippi

Site Type: Rock Shelter

Size: _____, Soil Type: _____

Cultural Affiliation (s): Stratified; Archaic - Mid Wood -Blue Earth

Focus (Mississippian)

Chronology: _____

Bibliographic references: Johnson & Taylor, 1956 " The Lee Mill Cave"

Map References: County Road Map , St. Paul Park, 7.5' Quad.

Location of Collections: SMM #3 pt 3

National Register Status:

On Register _____, Determined eligible _____, ineligible X _____

Remarks:

Excavations by E. Johnson 1956

Map # 8 (84) State Codification # DK - 3 County Dakota (MN)

Site Name: Hamm Site

Legal Description: Township & Range T115 R 18 Civil Township Hastings

Section Location: SE 1/4 of NE 1/4 of Sec 23

Present Owner: _____

Address: _____

Recorded By: (name & date) _____

Geographic/Topographic setting: _____

Water Source: Spring Lake; Distance from site _____

Elevation: _____ Drainage System Mississippi River

Site Type: _____

Size: Approx. 2.5 Acres, Soil Type: _____

Cultural Affiliation (s): Multicomponent Woodland

Chronology: _____

Bibliographic references: _____

Map References: County Road Map, St. Paul Park, 7.5' Quad.

Location of Collections: _____

National Register Status:

On Register _____, Determined eligible _____, ineligible X

Remarks: Excavations by E. Johnson 1957 (SMM)

Map # 9 (84) State Codification # DK - 4 County Dakota (MN)

Site Name: Ranelius

Legal Description: Township & Range T115 R18 Civil Township Hastings

Section Location: NW 1/4 of SW 1/4 of Sec 24

Present Owner: _____

Address: _____

Recorded By: (name & date) _____

Geographic/Topographic setting: _____

Water Source: Spring Lake ; Distance from site _____

Elevation: 700 Drainage System _____

Site Type: Village

Size: Approx. 10 Acres , Soil Type: _____

Cultural Affiliation (s): Multicomponent Archaic, Mississippian

Chronology: _____

Bibliographic references: Cooper 1954, Johnson 1955, (Field notes from

excavations ?, St. Paul Science Museum)

Map References: County Road Map, St. Paul Park, 7.5' Quad.

Location of Collections: Acc #Smm 2127

National Register Status:

On Register _____, Determined eligible _____, ineligible X _____

Remarks:

Excavations by Cooper 1954, Johnson 1955

Map # 10 (84) State Codification # DK - 5 County Dakota (MN)

Site Name: Bremer Mound

Legal Description: Township & Range T115 R18 Civil Township Hastings

Section Location: NE 1/4 of SW 1/4 Sec 23

Present Owner: _____

Address: _____

Recorded By: (name & date) _____

Geographic/Topographic setting: Next to Spring Lake

Water Source: Spring Lake ; Distance from site _____

Elevation: _____ Drainage System Mississippi River

Site Type: Mound with adjacent Habitation (DK - 6)

Size: _____, Soil Type: _____

Cultural Affiliation (s): Woodland

Chronology: _____

Bibliographic references: Johnson 1955 & 1956 (Smm) Pub. Rept. Jensen
1959

Map References: County Road Map, St. Paul Park, 7.5' Quad.

Location of Collections: Acc #'s 2158, 2180

National Register Status:

On Register _____, Determined eligible _____, ineligible x _____

Remarks: Excavations by E. Johnson 1955+1956

Map # 11 (84) State Codification # DK - 6 County Dakota (MN)

Site Name: Bremer Site

Legal Description: Township & Range T115 R18 Civil Township Hastings

Section Location: NE 1/4 of SW 1/4 and SE 1/4 of NW 1/4 Sec 23

Present Owner: _____

Address: _____

Recorded By: (name & date) _____

Geographic/Topographic setting: Adjacent to Spring Lake

Water Source: _____; Distance from site _____

Elevation: _____ Drainage System Mississippi

Site Type: Habitation with adjacent mounds (DK - 5) (village)

Size: _____, Soil Type: _____

Cultural Affiliation (s): Woodland

Chronology: _____

Bibliographic references: Pub. Report Jensen 1959, Johnson 1955, 1956

Map References: County Road Map, St. Paul Park, 7.5' Quad

Location of Collections: Acc #'s - 2180 -Smm

National Register Status:

On Register _____, Determined eligible _____, ineligible x _____

Remarks:

Excavations by E. Johnson 1955,1956 (SMM)

Map # 12 (85) State Codification # DK - 7 County Dakota (MN)

Site Name: Nininger

Legal Description: Township & Range T115 R17 Civil Township Hastings

Section Location: NE ¼ Sec 18

Present Owner: _____

Address: _____

Recorded By: (name & date) _____

Geographic/Topographic setting: Adjacent to Mississippi River on bluff

Water Source: Mississippi River; Distance from site _____

Elevation: Approx. 750 ft. Drainage System Mississippi

Site Type: Mounds (3) now destroyed

Size: _____, Soil Type: _____

Cultural Affiliation (s): Woodland

Chronology: _____

Bibliographic references: _____

Map References: Lewis, No 3, p 11, Winchell, p 178, St. Paul Park,

7.5' Quad

Location of Collections: _____

National Register Status:

On Register _____, Determined eligible _____, ineligible _____

Remarks: Now destroyed

Map # 13 (81) State Codification # DK - 9 County Dakota (MN)

Site Name: _____

Legal Description: Township & Range T28 R22 Civil Township South St. Paul

Section Location: NE 1/4 of NE 1/4 Sec 21

Present Owner: _____

Address: _____

Recorded By: (name & date) _____

Geographic/Topographic setting: On bluff of Mississippi River totally destroyed by urban developement

Water Source: Mississippi River ; Distance from site _____

Elevation: _____ Drainage System Mississippi River

Site Type: Mounds (5 Tumuli mounds covered with modern Indian graves)

Size: Approx. 10 Acres , Soil Type: _____

Cultural Affiliation (s): Woodland

Chronology: _____

Bibliographic references: _____

Map References: Lewis, No 3, p3; Winchell, p176 (map), St. Paul Park, 7.5' Quad.

Location of Collections: _____

National Register Status:

On Register _____, Determined eligible _____, ineligible X _____

Remarks: Destroyed by urban development

Map # 14 (81) State Codification # DK - 10 County Dakota (MN)

Site Name: _____

Legal Description: Township & Range T28 R22 Civil Township St. Paul ^{South}

Section Location: SW ¼ of Sec 22

Present Owner: _____

Address: _____

Recorded By: (name & date) _____

Geographic/Topographic setting: On bluff next to Mississippi River,
destroyed by urban developement

Water Source: Mississippi River ; Distance from site _____

Elevation: _____ Drainage System Mississippi River

Site Type: Three mounds

Size: _____, Soil Type: _____

Cultural Affiliation (s): Woodland

Chronology: _____

Bibliographic references: _____

Map References: Lewis, No 3, p3; Winchell p176, St. Paul E., 7.5' Quad

Location of Collections: _____

National Register Status:

On Register _____, Determined eligible _____, ineligible

Remarks: Destroyed by urban development

Map # 15 (84) State Codification # DK - 11 County Dakota (MN)

Site Name: _____

Legal Description: Township & Range T28 R22 Civil Township St. Paul ^{South}

Section Location: NE 1/4 of SE 1/4 of Sec 34

Present Owner: _____

Address: _____

Recorded By: (name & date) _____

Geographic/Topographic setting: Near Mississippi River (destroyed)

Water Source: Mississippi River ; Distance from site _____

Elevation: Approx. 710 ft. Drainage System Mississippi River

Site Type: Mounds (3 Tumuli mounds; 40' x 2'; 45' x 2.5'; 28' x 2')

Size: _____, Soil Type: _____

Cultural Affiliation (s): Woodland

Chronology: _____

Bibliographic references: Public Report Werner p4; Dakota Co File

1974 MHS.

Map References: Lewis No. 3, p4, Winchell, p176, St. Paul E.,

7.5' Quad

Location of Collections: _____

National Register Status:

On Register _____, Determined eligible _____, ineligible _____

Remarks: Destroyed

Map # 16 (82) State Codification # DK - 12 County Dakota (MN)

Site Name: _____

Legal Description: Township & Range T28 R22 Civil Township St. Paul South

Section Location: SE 1/4 of NE 1/4 Sec 34

Present Owner: _____

Address: _____

Recorded By: (name & date) _____

Geographic/Topographic setting: Next to Mississippi River (destroyed)

Water Source: Mississippi River; Distance from site _____

Elevation: _____ Drainage System Mississippi River

Site Type: Single Tumulus mound

Size: _____, Soil Type: _____

Cultural Affiliation (s): Woodland

Chronology: _____

Bibliographic references: Werner, p4 Dakota Co File 1974 MHS.

Map References: Winchell, p176, St. Paul E., 7.5' Quad

Location of Collections: _____

National Register Status:

On Register _____, Determined eligible _____, ineligible X _____

Remarks: Destroyed

Map # 17 (81) State Codification # DK - 13 County Dakota (MN)

Site Name: _____

Legal Description: Township & Range T28 R22 Civil Township St. Paul South

Section Location: NW 1/4 of SE 1/4 Sec 27

Present Owner: _____

Address: _____

Recorded By: (name & date) _____

Geographic/Topographic setting: Near Mississippi River

Water Source: Mississippi River ; Distance from site _____

Elevation: _____ Drainage System Mississippi River

Site Type: One large Tumulus mound

Size: _____, Soil Type: _____

Cultural Affiliation (s): Woodland

Chronology: _____

Bibliographic references: Werner p5, Dakota Co File MHS

Map References: St. Paul E., 7.5' Quad

Location of Collections: _____

Map # 18 (80) State Codification # DK - 14 County Dakota (MN)

Site Name: _____

Legal Description: Township & Range T28 R22 Civil Township St. Paul ^{South}

Section Location: NW ¼ of NE ¼ Sec 16

Present Owner: _____

Address: _____

Recorded By: (name & date) _____

Geographic/Topographic setting: Mississippi River flood plain

Water Source: Mississippi River ; Distance from site _____

Elevation: _____ Drainage System Mississippi River

Site Type: single mound, destroyed

Size: _____, Soil Type: _____

Cultural Affiliation (s): Woodland

Chronology: _____

Bibliographic references: Werner p5, Dakota Co File MHS

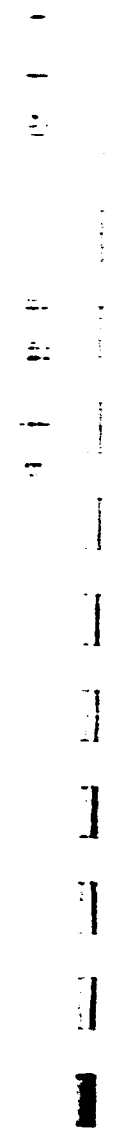
Map References: Lewis No. 3, p8, St. Paul E., 7.5' Quad

Location of Collections: _____

National Register Status:

On Register _____, Determined eligible _____, ineligible x _____

Remarks: Destroyed



Map # 19 (81) State Codification # DK - 16 County Dakota (MN)

Site Name: Silk Mounds

Legal Description: Township & Range T28 R22 Civil Township St. Paul South

Section Location: N ½ Sec 27

Present Owner: John Silk, A. J. Gillette

Address: _____

Recorded By: (name & date) _____

Geographic/Topographic setting: On bluff of Mississippi River group
destroyed, save one small possible remnant near center of group

Water Source: Mississippi River ; Distance from site _____

Elevation: Approx. 800 ft. Drainage System Mississippi River

Site Type: 11 mounds on brow of bluff, one elongated and enlarged

Size: Approx. 7 Acres , Soil Type: _____

Cultural Affiliation (s): Woodland

Chronology: _____

Bibliographic references: _____

Map References: Lewis, No. 3 p9, Winchell p176 (map p177), St. Paul E.,

7.5' Quad

Location of Collections: _____

National Register Status:

On Register _____, Determined eligible _____, ineligible X _____

Remarks: 8/28/74 checked by Les Petersen

-
-
-
-
-
-

Map # 20 (79) State Codification # DK - 19 County Dakota (MN)

Site Name: _____

Legal Description: Township & Range T28 R23 Civil Township Mendota Height

Section Location: SW 1/4 of SW 1/4 Sec 13

SE 1/4 of SE 1/4 Sec 14

Present Owner: _____

Address: _____

Recorded By: (name & date) _____

Geographic/Topographic setting: Bluff near South end of Pickerel Lake

Water Source: Pickerel Lake; Distance from site _____

Elevation: _____ Drainage System Mississippi River

Site Type: 11 Mounds

Size: _____, Soil Type: _____

Cultural Affiliation (s): Woodland

Chronology: _____

Bibliographic references: _____

Map References: Lewis No 5, p1, Winchell p176 (map p177), St. Paul W.,

7.5' Quad

Location of Collections: _____

Map # 21 (79) State Codification # DK - 18 County Dakota (MN)

Site Name: _____

Legal Description: Township & Range T28 R23 Civil Township Mendota Heights

Section Location: W½ of NW¼ sec. 27

Present Owner: _____

Address: _____

Recorded By: (name & date) _____

Geographic/Topographic setting: Near Minnesota and Mississippi River
confluence

Water Source: Minnesota River ; Distance from site _____

Elevation: _____ Drainage System Mississippi River

Site Type: mound (2 oblong and 3 circular mounds)

Size: _____, Soil Type: _____

Cultural Affiliation (s): Woodland

Chronology: _____

Bibliographic references: _____

Map References: Lewis, Ns. 4, p6

Winchell p174 (map p175 , St. Paul W., 7.5' Quad

Location of Collections: _____

Map # 22 (79) State Codification # DK - 17 County Dakota (MN)

Site Name: _____

Legal Description: Township & Range T28 R23 Civil Township Mendota Heights

Section Location: W 1/2 of NW 1/4 Sec 27

Present Owner: _____

Address: _____

Recorded By: (name & date) _____

Geographic/Topographic setting: Next to Minnesota and Mississippi River confluence

Water Source: Minnesota River; Distance from site _____

Elevation: _____ Drainage System Mississippi River

Site Type: Mound (eight circular mounds)

Size: _____, Soil Type: _____

Cultural Affiliation (s): Woodland

Chronology: _____

Bibliographic references: _____

Map References: Lewis, No. 4 p5

Winchell, p174 (map p175), St. Paul W., 7.5' Quad

Location of Collections: _____

National Register Status:

On Register _____, Determined eligible _____, ineligible X _____

Remarks:

Map # 23 (79) State Codification # DK - 20 County Dakota (MN)

Site Name: _____

Legal Description: Township & Range T28 R23 Civil Township Mendota Heights

Section Location: One mile below Mendota (via river) Lot 3,

SE 1/4 of NW 1/4 Sec 23

Present Owner: _____

Address: _____

Recorded By: (name & date) _____

Geographic/Topographic setting: Along Minnesota River

Water Source: Minnesota River; Distance from site _____

Elevation: _____ Drainage System Mississippi River

Site Type: Mound (22, all simple Tumuli except one, elongated)

Size: _____, Soil Type: _____

Cultural Affiliation (s): Woodland

Chronology: _____

Bibliographic references: _____

Map References: Lewis, No. 5 p19

Winchell, p176 (map p177), St. Paul W., 7.5' Quad

Location of Collections: _____

National Register Status:

On Register _____, Determined eligible _____, ineligible X _____

Remarks:



Map # 24 (79) State Codification # DK - 24 County Dakota (MN)

Site Name: New Hope Cantonment

Legal Description: Township & Range T28 R23 Civil Township Mendota Heights

Section Location: Sec 27

Present Owner: _____

Address: _____

Recorded By: (name & date) _____

Geographic/Topographic setting: Near Mississippi River

Water Source: Mississippi River; Distance from site _____

Elevation: _____ Drainage System Mississippi River

Site Type: Historic Army cantonment

Size: _____, Soil Type: _____

Cultural Affiliation (s): Historic

Chronology: _____

Bibliographic references: Johnson, 1964 MHS

Map References: St. Paul W., 7.5' Quad

Location of Collections: _____

National Register Status:

On Register _____, Determined eligible _____, ineligible x _____

Remarks: Excavated MHS by E. Johnson 1964

Map # 25 (84) State Codification # WA - 1 County Washington (MN)

Site Name: Schilling Site

Legal Description: Township & Range T26,27 R21 Civil Township Island Grey Cloud

Section Location: N ½ NE ¼ Sec 5 T26 R21

S ½ SE ¼ Sec 32 T27 R21

Present Owner: Mr. Paul A. Schilling

Address: 2048 Lower St. Dennis Rd. St. Paul, Minnesota 55116

Recorded By: (name & date) Johnson, Birk, George 1973; Schissel, 1977

Geographic/Topographic setting: Eastern tip of Grey Cloud Island

in Mississippi River

Water Source: Mississippi River ; Distance from site Adjacent

Elevation: 700 ft. Drainage System Mississippi River

Site Type: Mounds and Habitation

Size: 2,500 by 350 ft. , Soil Type: _____

Cultural Affiliation (s): Early Woodland through late prehistoric

Chronology: (1000 BC - 1700 AD)

Bibliographic references: Birk, "Grey Cloud: An Archaeological Approach"

Minn Archaeologist Vol. 32, No. 1 + 2, 1973

Map References: St. Paul Park, 7.5' Quad

Location of Collections: Minnesota Science Museum MHS

National Register Status:

On Register X , Determined eligible , ineligible —

Remarks:

Map # 26 (83) State Codification # 21 WA 2 County Washington (MN)

Site Name: Michaud Mounds (Gray Cloud Mounds)

Legal Description: Township & Range T27 R21,22 Civil Township Island Grey Cloud

Section Location: SW 1/4 SW 1/4 Sec 30 T27 R21

S 1/4 SE 1/4 Sec 25 T27 R22

Present Owner: Edward Michard 1947

Address: St. Paul Park

Recorded By: (name & date) _____

Geographic/Topographic setting: Upper end of lower Grey Cloud Island in
Mississippi River

Water Source: Mississippi River ; Distance from site Adjacent

Elevation: Approx. 730 ft. Drainage System Mississippi River

Site Type: Mound (group of 19)

Size: _____, Soil Type: _____

Cultural Affiliation (s): _____ Woodland

Chronology: _____

Bibliographic references: Wilford's Report on File. Birk 1971

Map References: Lewis, No. 3, p38; Winchell p267

Location of Collections: Acc #274 Skeletons, Artifacts

National Register Status:

On Register _____, Determined eligible _____, ineligible x _____

Remarks:

Map # 27 (84) State Codification # WA 8 County Washington (MN)

Site Name: Curry

Legal Description: Township & Range T27 R21 Civil Township Grove Cottage

Section Location: S ½ NW ¼ Sec 33

Present Owner: _____

Address: _____

Recorded By: (name & date) _____

Geographic/Topographic setting: 24 mounds on a bluff of cultivated land about 80 ft. above Mississippi River

Water Source: Mississippi River ; Distance from site Adjacent

Elevation: _____ Drainage System Mississippi River

Site Type: Mounds (24)

Size: _____, Soil Type: _____

Cultural Affiliation (s): Woodland

Chronology: _____

Bibliographic references: _____

Map References: Lewis No. 4, pl6; Winchell, p267, St. Paul Park, 7.5' Quad

Location of Collections: _____

National Register Status:

On Register _____, Determined eligible _____, ineligible X _____

Remarks:

Map # 28 (84) State Codification # WA - 9 County Washington (MN)

Site Name: _____

Legal Description: Township & Range T27 R21,22 Civil Township _____

Section Location: SW ¼ of SW ¼ of Sec 31

S ½ of SE ¼ of Sec 36

Present Owner: Paul Schilling - 1947

Address: 1463 Grantham Ave., St. Paul, MN

Recorded By: (name & date) _____

Geographic/Topographic setting: Gray Cloud Island (1 mile due south of WA -2,
near high water mark to 18 ft. above it in Mississippi River

Water Source: Mississippi River; Distance from site Adjacent

Elevation: _____ Drainage System Mississippi River

Site Type: Mounds (54)

Size: _____, Soil Type: _____

Cultural Affiliation (s): Woodland

Chronology: _____

Bibliographic references: Birk, 1971; Wilford Memo 1947, St. Paul Park,

7.5' Quad

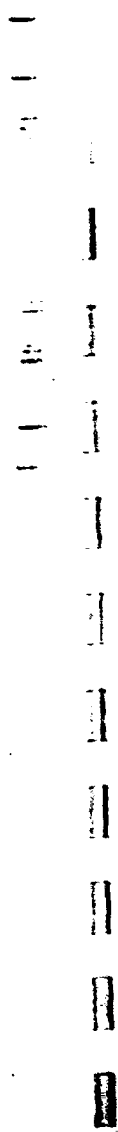
Map References: Lewis, No. 3 p23; Winchell, p267

Location of Collections: _____

National Register Status:

On Register _____, Determined eligible _____, ineligible X _____

Remarks:



Map # 29 (83) State Codification # WA 24 County Washington (MN)

Site Name: Larson Plant Floodplain Site

Legal Description: Township & Range T27 R22 Civil Township Grey Cloud Island

Section Location: NE 1/4 SW 1/4 Sec 26

Present Owner: _____

Address: _____

Recorded By: (name & date) Douglas Birk 1972

Geographic/Topographic setting: Upper Grey Cloud Island in Mississippi River

Water Source: Mississippi River ; Distance from site Adjacent

Elevation: _____ Drainage System Mississippi River

Site Type: Temporary camp (probable single occupation)

Size: _____, Soil Type: _____

Cultural Affiliation (s): Probably late prehistoric woodland

Chronology: _____

Bibliographic references: _____

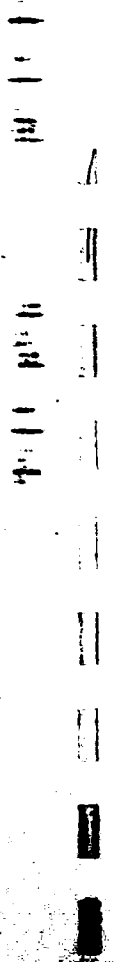
Map References: Inver Grove Heights, 7.5' Quad

Location of Collections: MHS

National Register Status:

On Register _____, Determined eligible _____, ineligible X

Remarks:



Map # 30 (84) State Codification # WA - 48 County Washington (MN)

Site Name: Grey Cloud Island Townsite

Legal Description: Township & Range _____ Civil Township _____

Section Location: S ½ of SW ¼ Sec 31 T27 R21

NE ¼ of NW ¼ Sec 6 T26 R21 W

Present Owner: Paul Schilling, Lower Grey Cloud Island

Address: Leased by Shiely Co.

Recorded By: (name & date) _____

Geographic/Topographic setting: On Mississippi River on Grey Cloud

Island

Water Source: Mississippi River ; Distance from site Adjacent

Elevation: 685 ft. Drainage System Mississippi River

Site Type: Habitation

Size: _____, Soil Type: _____

Cultural Affiliation (s): Euro-American, possible prehistoric

Chronology: _____

Bibliographic references: Birk, 1971, Grey Cloud: An Archaeological Approach,

Minnesota Archaeological Society

Map References: St. Paul Park, 7.5' Quad

Location of Collections: Mrs. Michaud, Mr. & Mrs. Schilling,

Mr. & Mrs. Cunderson, Pat Ganaway of Lower Grey Cloud Island MHS

Map # 31 (79) State Codification # HE 99 County Hennepin (MN)

Site Name: Fort Snelling

Legal Description: Township & Range T28N, R23W Civil Township

Section Location: N $\frac{1}{2}$, NE $\frac{1}{4}$, NW $\frac{1}{4}$, Sec 28, E $\frac{1}{2}$, Sec 20, NE $\frac{1}{4}$ Sec 29
S $\frac{1}{2}$, SW $\frac{1}{4}$, Sec 21; SE $\frac{1}{4}$, SW $\frac{1}{4}$, Sec 21.

Present Owner: State of Minnesota

Address:

Recorded By: (name & date)

Geographic/Topographic setting: Military Reservation on bluff of
confluence of Minnesota and Mississippi Rivers

Water Source: ; Distance from site

Elevation: Drainage System Mississippi

Site Type: Historic Military Fort and Base

Size: Approx. 160 Acres, Soil Type:

Cultural Affiliation (s): Historic white and aboriginal, small
prehistoric component

Chronology: Original fort 1820

Bibliographic references:

Map References: St. Paul W., 7.5' Quad

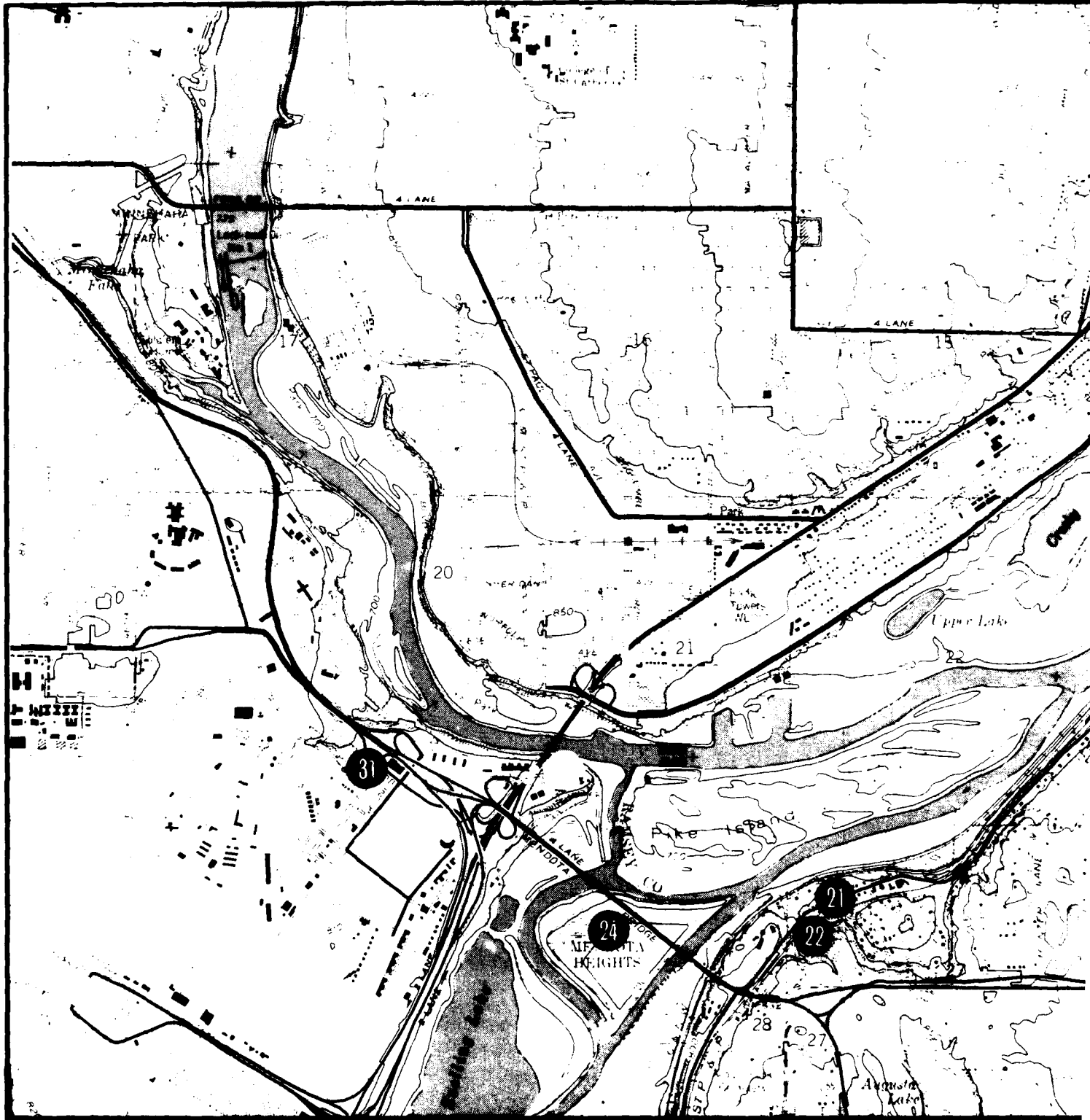
Location of Collections:

78b

National Register Status:

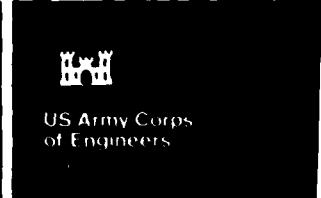
On Register X, Determined eligible _____, ineligible _____

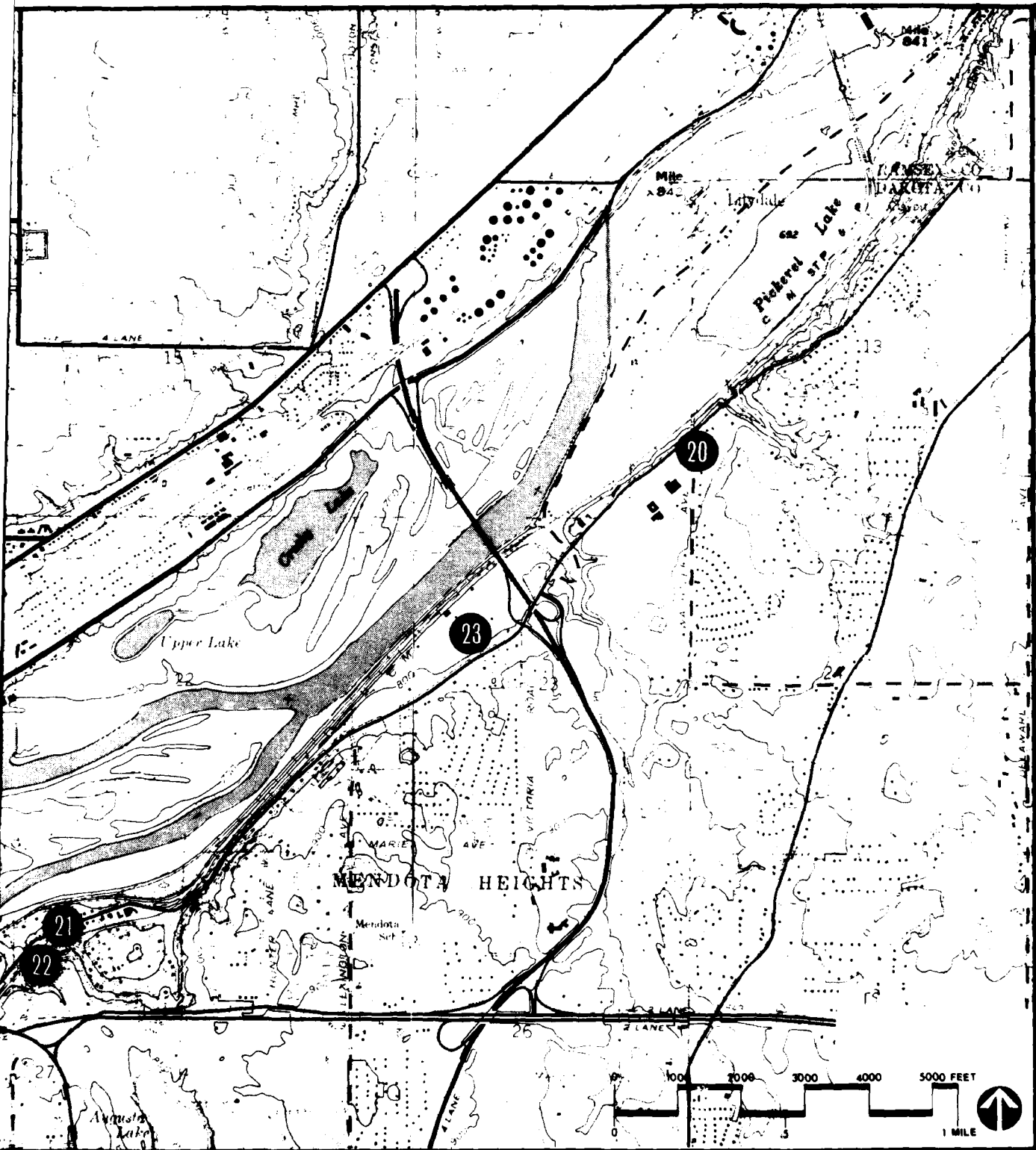
Remarks:



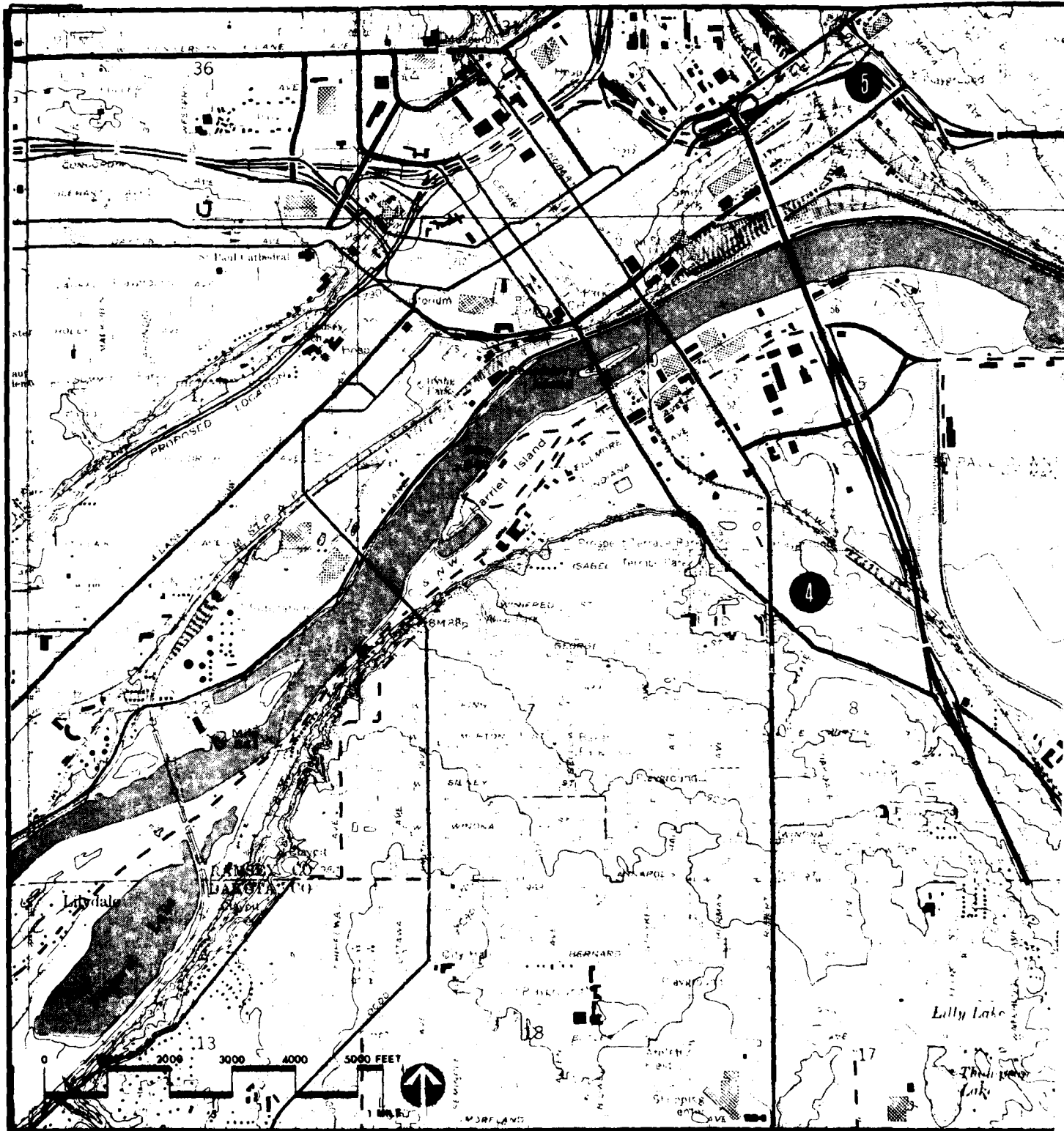
Master Plan for Public
Use Development and
Resource Management
Upper Mississippi River

Legend
FIGURE 8:
ARCHAEOLOGICAL SITES-POOL 2



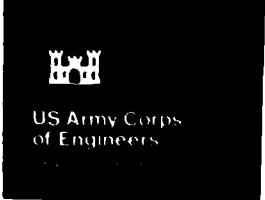


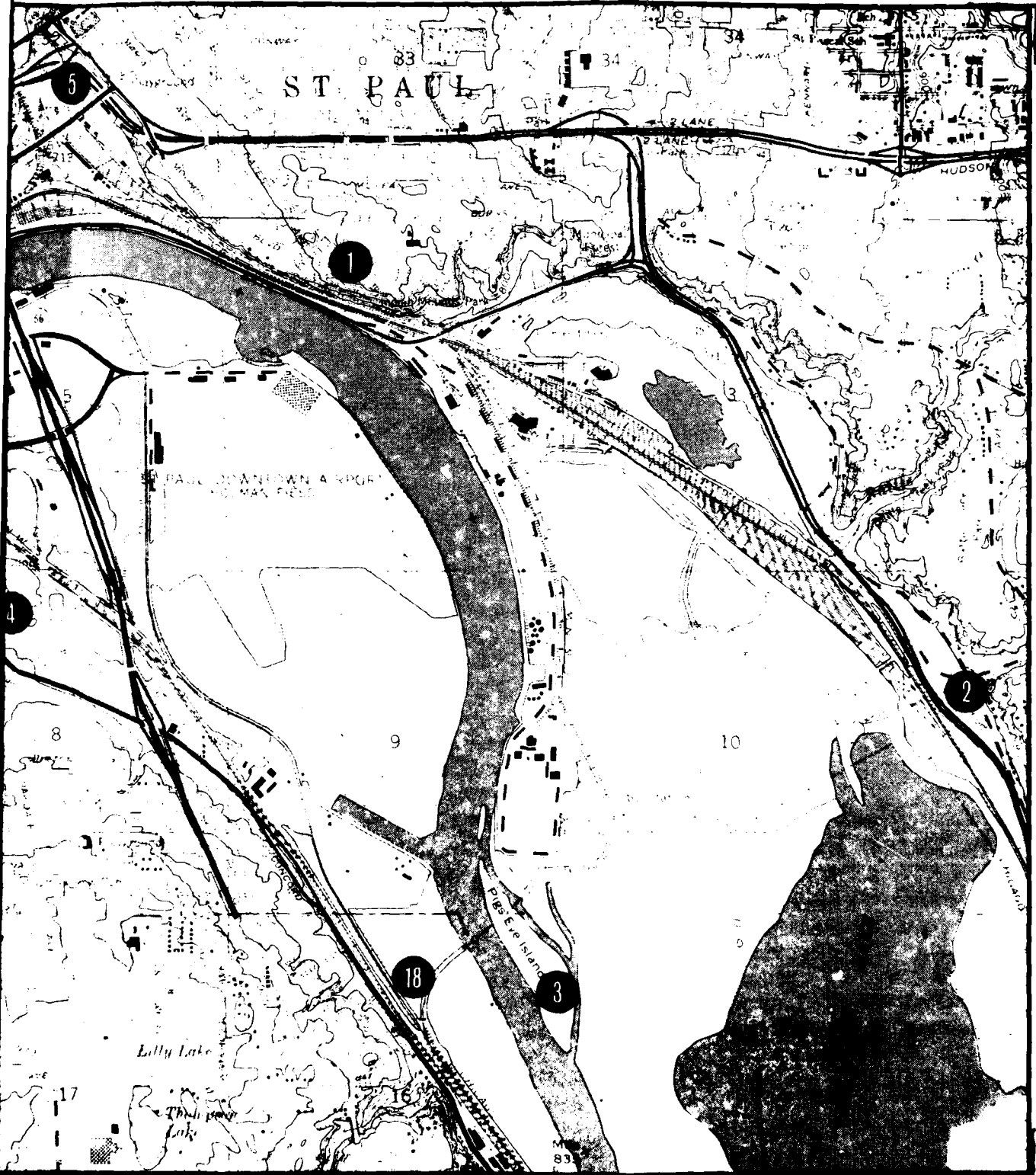
Drawn by _____
 Checked by _____
 Submitted by _____
 Approved by _____




Master Plan for Public
Use Development and
Resource Management
Upper Mississippi River

Legend
FIGURE 9:
ARCHAEOLOGICAL SITES-POOL 2





2



US Army Corps
of Engineers

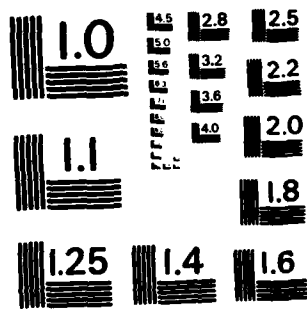
Drawn by _____

Checked by _____

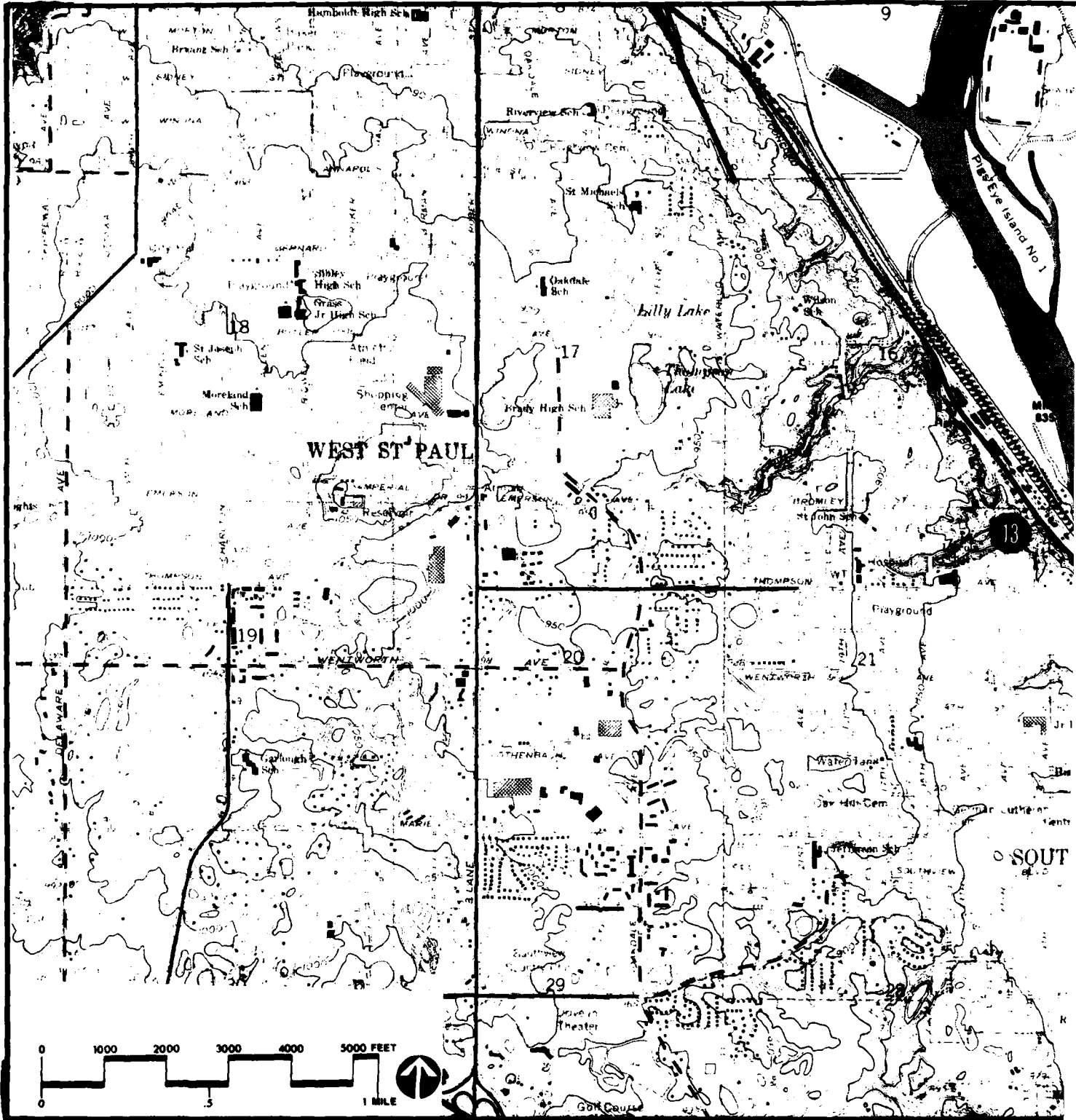
Submitted by _____

Approved by _____

Pool 2 Mile 835.0-842.0 80



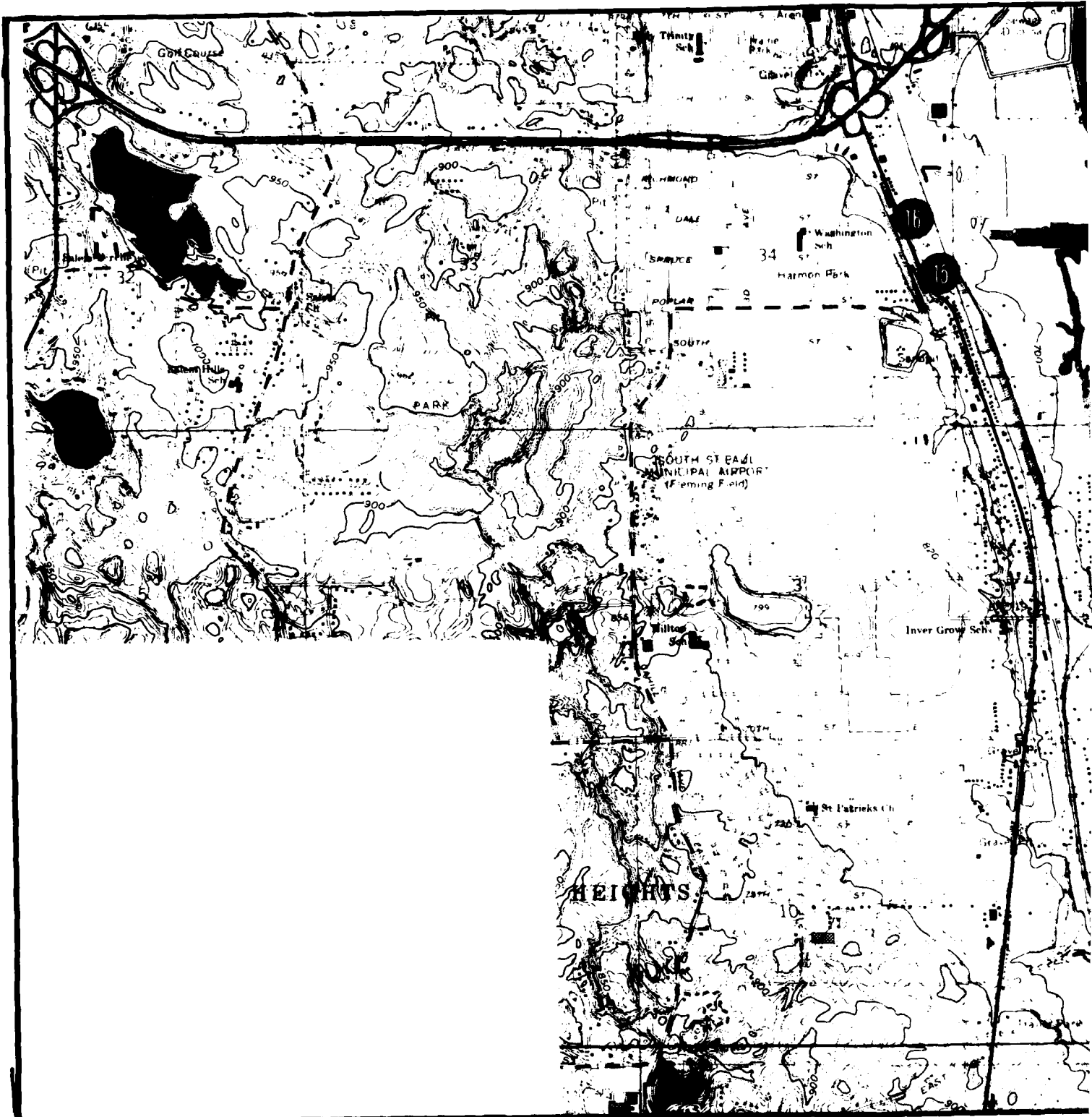
MICROCOPY RESOLUTION TEST CHART
NATIONAL BUREAU OF STANDARDS-1963-A



Master Plan for Public
 Use Development and
 Resource Management
Upper Mississippi River

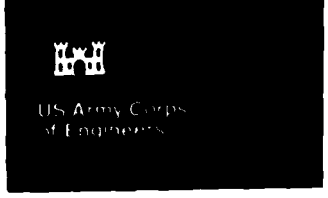
Legend
FIGURE 10:
ARCHAEOLOGICAL SITES-POOL 2

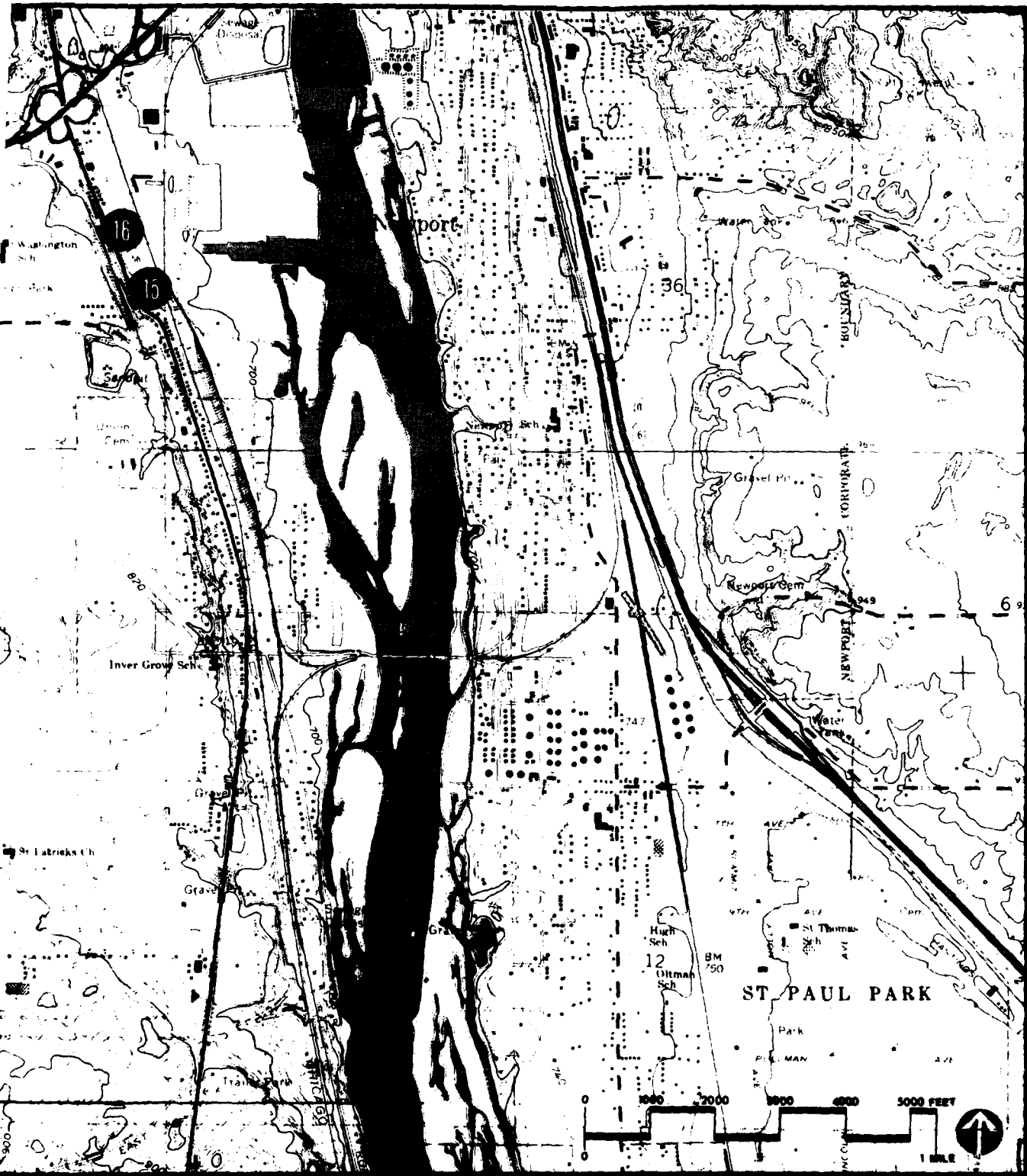




Master Plan for Public
 Use Development and
 Resource Management
Upper Mississippi River

Legend
FIGURE II:
ARCHAEOLOGICAL SITES-POOL 2





2



Drawn by: _____
 Checked by: _____
 Submitted by: _____
 Approved by: _____

Pool 2 Mile 828.4-832.3 82

2



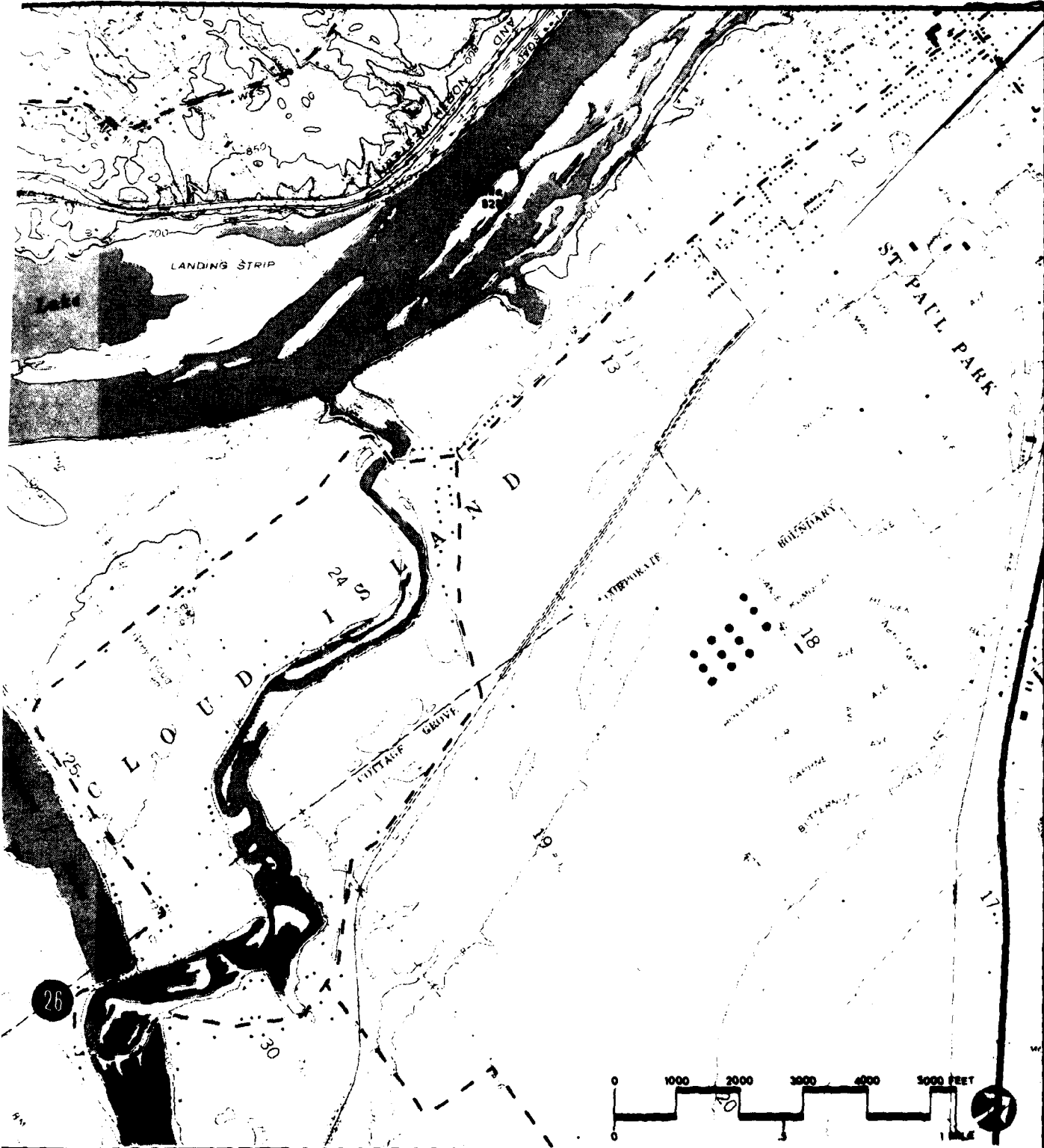
Master Plan for Public
Use Development and
Resource Management
Upper Mississippi River

Legend

FIGURE 12.
ARCHAEOLOGICAL SITES-POOL 2



US Army Corps
of Engineers



DL 2

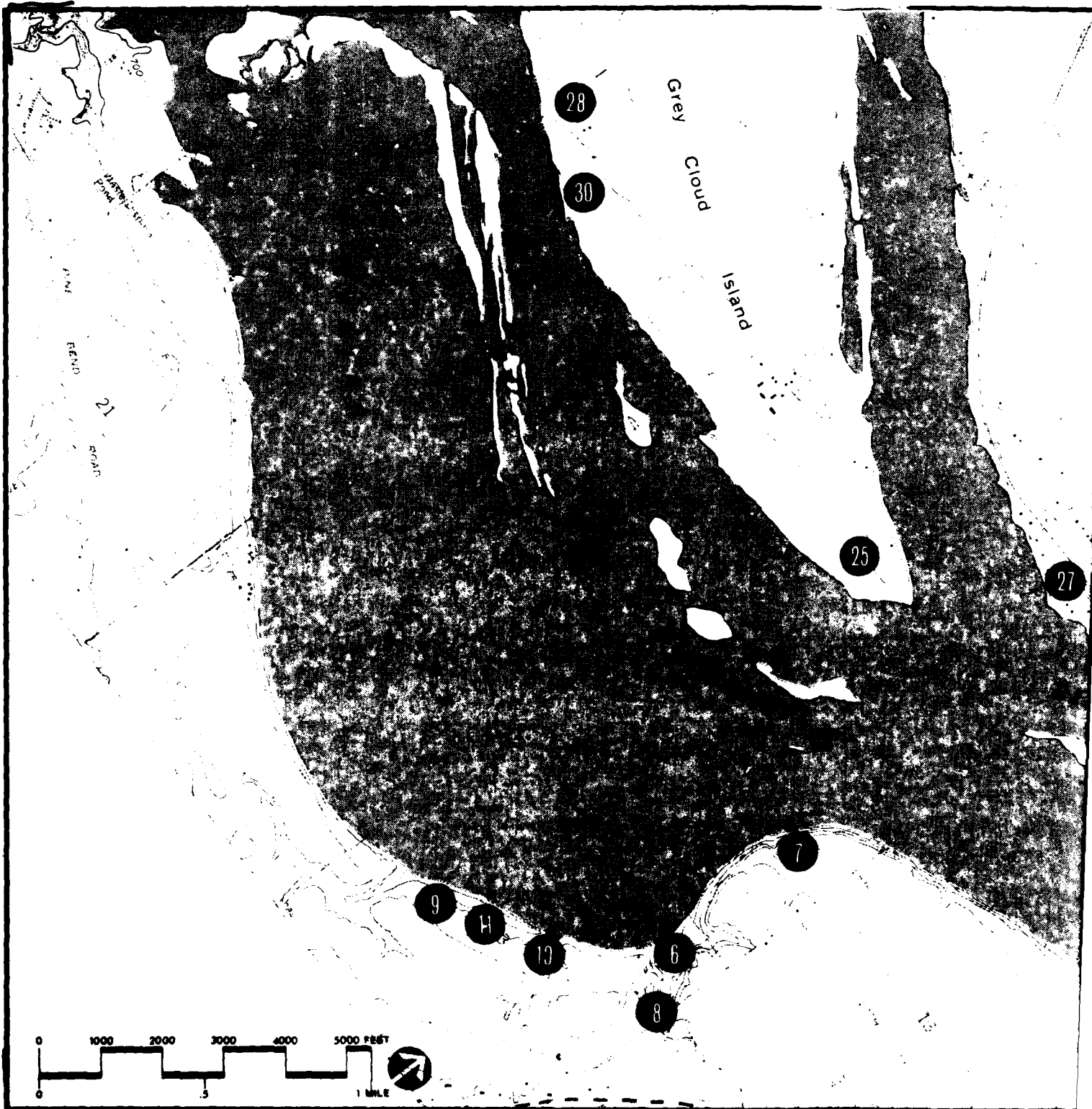


U.S. Army Corps of Engineers
 Hydrographic Engineering

Drawn by: _____
 Checked by: _____
 Submitted by: _____
 Approved by: _____

Pool 2 Mile 822.7-828.8

83



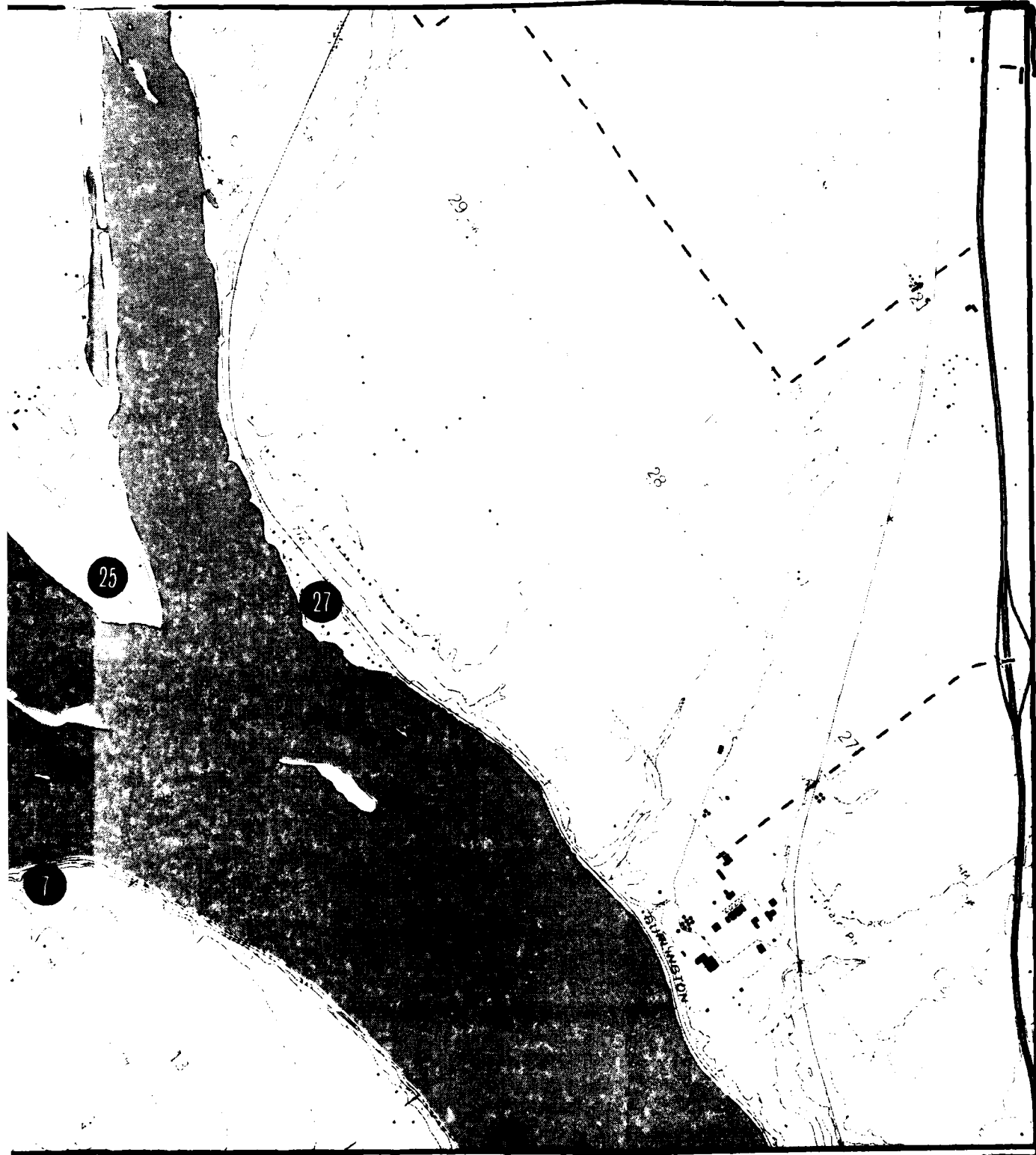
Master Plan for Public
Use Development and
Resource Management
Upper Mississippi River

Legend

FIGURE 13:
ARCHAEOLOGICAL SITES-POOL 2



US Army Corps
of Engineers



2



US Army Corps
of Engineers

Drawn by: _____
Checked by: _____
Submitted by: _____
Approved by: _____

Pool 2 Mile 818.0-822.9

84



Drawn by: _____

Checked by: _____

Submitted by: _____

Approved by: _____

L & D 2 Mile 814.0-818.2

85

DATE
ILME