

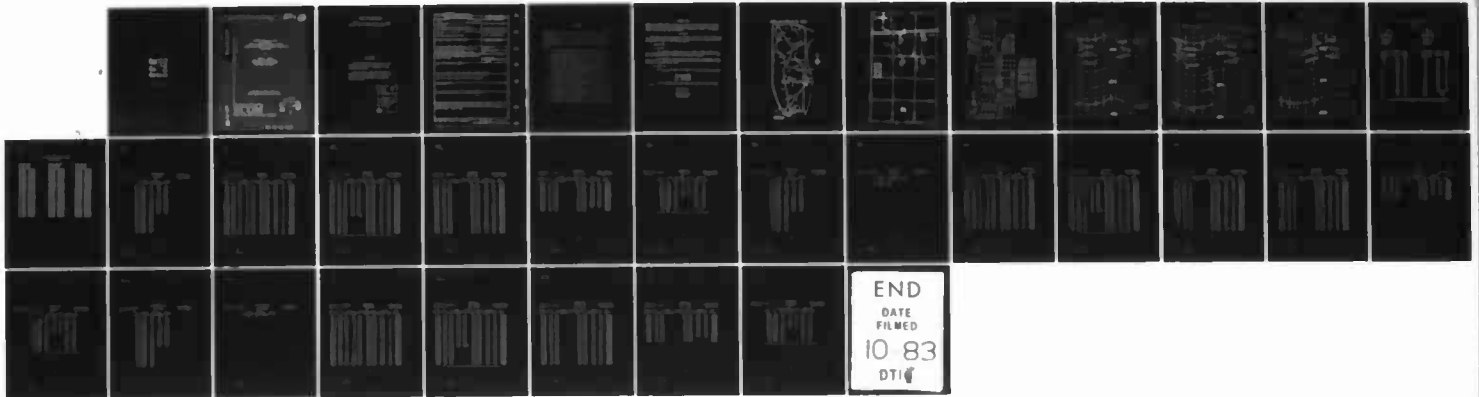
AD-A132 340

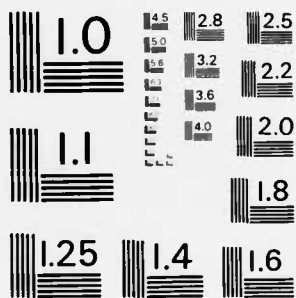
19316A MLRS MISSILE NUMBERS FV3-30 FV3-12 FV3-05 ROUND  
NUMBERS 497/AT2-49.. (U) ARMY ELECTRONICS RESEARCH AND  
DEVELOPMENT COMMAND WSMR NM ATM.. D C KELLER AUG 83  
ERADCOM/ASL-DR-1314 F/G 4/2

1/1

UNCLASSIFIED

NL





MICROCOPY RESOLUTION TEST CHART  
NATIONAL BUREAU OF STANDARDS-1963-A

APPROVED FOR PUBLIC RELEASE; DISTRIBUTION UNLIMITED

DR 1314  
Aug 83

AD

12

ADA132340

METEOROLOGICAL DATA REPORT  
19316A MLRS  
Missile Number FV3-30, FV3-12, FV3-05  
Round Number 497/AT2-49, 498/AT2-50, 499/AT2-51  
3 August 1983

by

DONALD C. KELLER  
Program Support Coordinator  
Phone Number (505) 679-9568  
AVN Number 349-9568

ATMOSPHERIC SCIENCES LABORATORY  
WHITE SANDS MISSILE RANGE, NEW MEXICO

DTIC FILE COPY

ECOM

UNITED STATES ARMY ELECTRONICS COMMAND

DTIC  
ELECTE  
SEP 09 1983  
S D E

83 09 02 020

DISPOSITION INSTRUCTIONS

*Obtain copy  
Cover*

Destroy this report when it is no longer needed. Do not return to the originator.

DISCLAIMER

The findings in this report are not to be construed as an official Department of the Army position, unless so designated by other authorized documents.

The citation of trade names and names of manufacturers in this report is not to be construed as official Government indorsement or approval of commercial products or services referenced herein.



Accession For	
NTIS GRA&I	<input checked="" type="checkbox"/>
DTIC TAB	<input type="checkbox"/>
Unannounced	<input type="checkbox"/>
Justification	
By _____	
Distribution/	
Availability Codes	
Dist	Avail and/or Special
<i>A</i>	

UNCLASSIFIED

SECURITY CLASSIFICATION OF THIS PAGE (When Data Entered)

REPORT DOCUMENTATION PAGE		READ INSTRUCTIONS BEFORE COMPLETING FORM
1. REPORT NUMBER DR 1314	2. GOVT ACCESSION NO. AD-A132-340	3. RECIPIENT'S CATALOG NUMBER
4. TITLE (and Subtitle) 19316A MLRS Missile Number FV3-30, FV3-12, FV3-05 Round Number 497/AT2-49, 498/AT2-50, 499/AT2-51		5. TYPE OF REPORT & PERIOD COVERED
7. AUTHOR(s) White Sands Meteorological Team		6. PERFORMING ORG. REPORT NUMBER
9. PERFORMING ORGANIZATION NAME AND ADDRESS		8. CONTRACT OR GRANT NUMBER(s) DA Task 1F665702D127-02
11. CONTROLLING OFFICE NAME AND ADDRESS US Army Electronics Research & Development Cmd Atmospheric Sciences Laboratory White Sands Missile Range, New Mexico 88002		10. PROGRAM ELEMENT, PROJECT, TASK AREA & WORK UNIT NUMBERS
14. MONITORING AGENCY NAME & ADDRESS (if different from Controlling Office) US Army Electronics Research and Development Cmd Adelphi, MD 20783		12. REPORT DATE Aug 83
		13. NUMBER OF PAGES 33
		15. SECURITY CLASS. (of this report) UNCLASSIFIED
		15a. DECLASSIFICATION/DOWNGRADING SCHEDULE
16. DISTRIBUTION STATEMENT (of this Report)		
17. DISTRIBUTION STATEMENT (of the abstract entered in Block 20, if different from Report)  Approved for public release; distribution unlimited.		
18. SUPPLEMENTARY NOTES		
19. KEY WORDS (Continue on reverse side if necessary and identify by block number)		
20. ABSTRACT (Continue on reverse side if necessary and identify by block number) Meteorological data gathered for the launching of the 19316A MLRS, Missile Number FV3-30, FV3-12, FV3-05, Round Number 497/AT2-49, 498/AT-2-50, 499/AT2-51 are presented in tabular form.		

DD FORM 1473  
1 JAN 73

EDITION OF 1 NOV 65 IS OBSOLETE

UNCLASSIFIED

SECURITY CLASSIFICATION OF THIS PAGE (When Data Entered)

## CONTENTS

	PAGE
INTRODUCTION-----	1
DISCUSSION-----	1
GENERAL AREA MAP-----	2
LAUNCH AREA DIAGRAM-----	3
TABLES	
1. Surface Observations Taken at T-0 mins at Brilo-----	4
2. Anemometer Measured Wind Data at 30 Ft. AGL-----	5
3. Anemometer Measured Wind Data at 60 Ft. AGL-----	5
4. Anemometer Measured Wind Data at 90 Ft. AGL-----	7
5. Launch and Impact Area pilot-balloon Measured Wind Data-----	8
6. Aiming and T-Time Computer Met Messages-----	9
7. E-28 Significant Level Data at 0655 MDT-----	10
8. E-28 Upper Air Data at 0655 MDT-----	11
9. E-28 Mandatory Levels at 0655 MDT-----	15
10. JALLEN Significant Level Data at 0655 MDT-----	16
11. JALLEN Upper Air Data at 0655 MDT-----	18
12. JALLEN Mandatory Levels at 0655 MDT-----	23
13. E-28 Significant Level Data at 1004 MDT-----	24
14. E-28 Upper Air Data at 1004 MDT-----	26
15. E-28 Mandatory Levels at 1004 MDT-----	30

## INTRODUCTION

19316A MLRS, Missile Numbers FV3-30, FV3-12 and FV3-05, Round Numbers 497/AT2-49, 498/AT2-50 and 499/AT2-51, were launched from Brillo, White Sands Missile Range (WSMR), New Mexico, at 0947:38, 1002:16 and 1015:54 MDT, 3 Aug 83. The scheduled launch times were 0930, 0940 and 0950 MDT.

## DISCUSSION

Meteorological data were recorded and reduced by the White Sands Meteorological Team, Atmospheric Sciences Laboratory (ASL), White Sands Missile Range, New Mexico. The data were obtained by the following methods:

### 1. Observations

#### a. Surface

(1) Standard surface observations to include pressure, temperature ( $^{\circ}\text{C}$ ), relative humidity, dew point ( $^{\circ}\text{C}$ ), density ( $\text{gm}/\text{m}^3$ ), wind direction and speed, and cloud cover were made at the Brillo Met Site at T-0 Minutes.

(2) Anemometer data were provided from existing tower-mounted anemometers at Brillo. Monitor of wind speed and direction from one anemometer was also provided in the launch control room.

#### b. Upper Air

(1) Low level wind data were obtained from Pilot-balloon observations at:

#### SITE AND ALTITUDE

D 3½ 2000 meters

MAL 1550 meters

(2) Air structure data (rawinsonde) were collected at the following Met Sites.

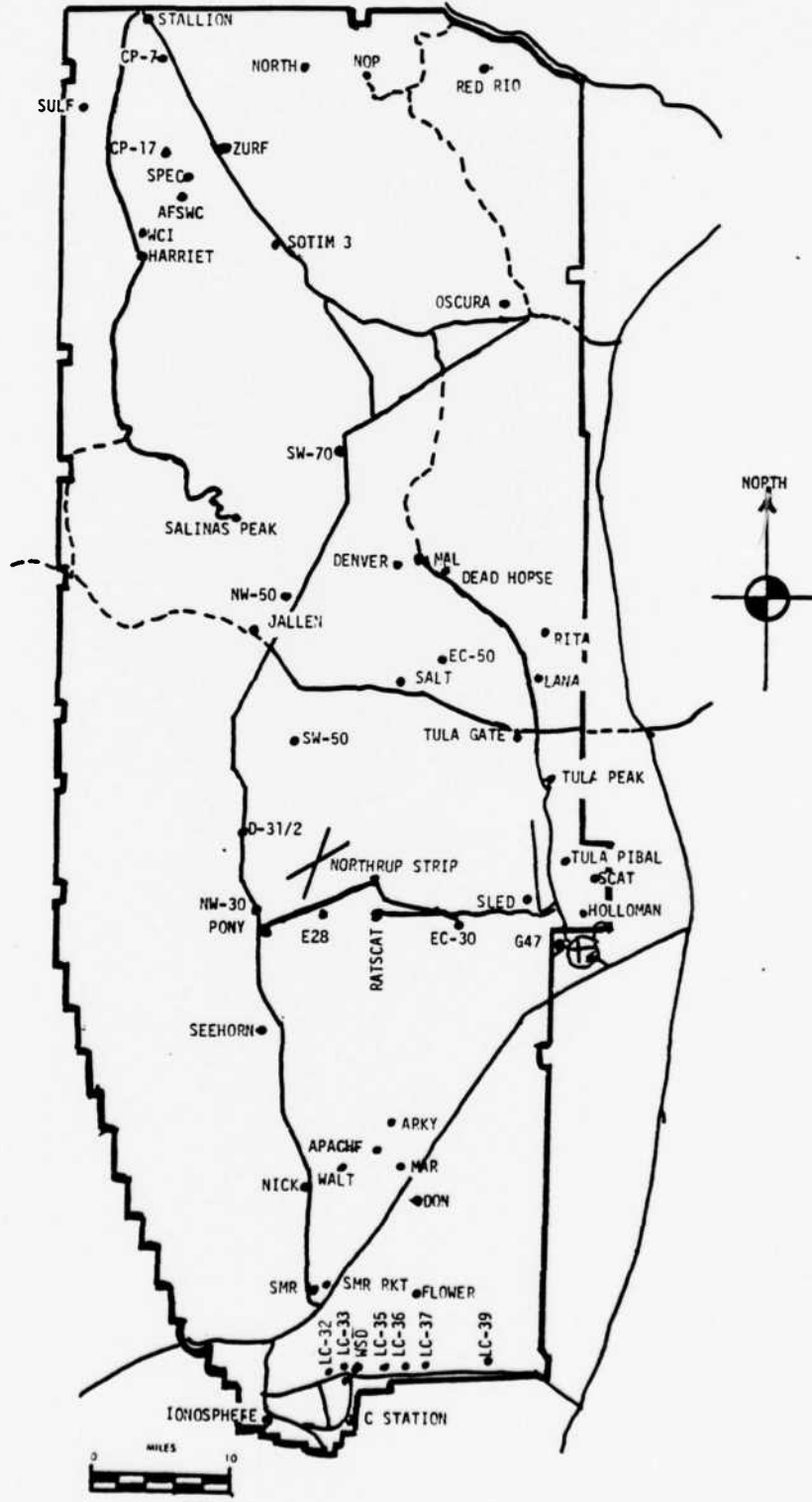
#### SITE AND TIME

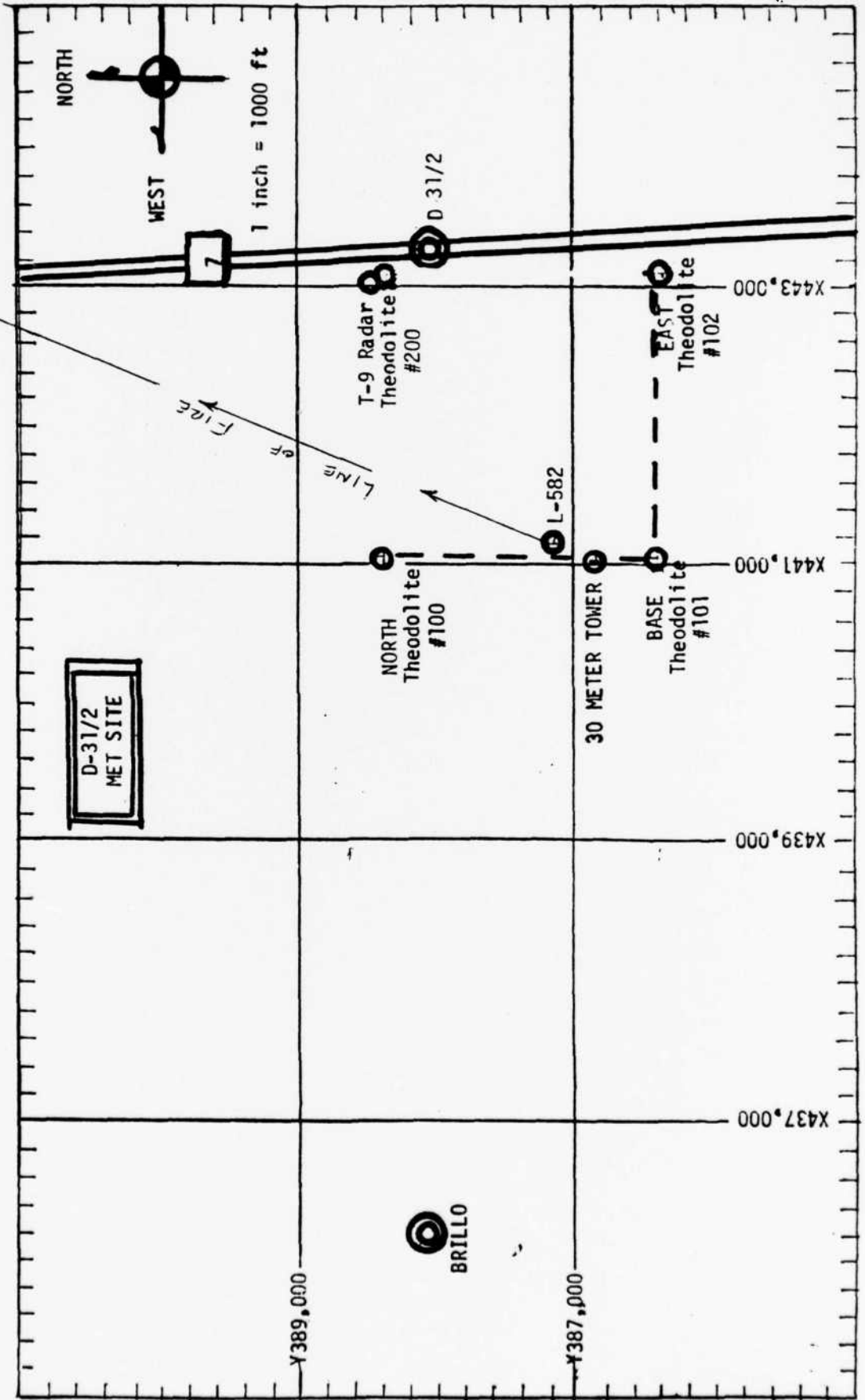
E-28 0655 MDT

JALLEN 0655 MDT

E-28 1004 MDT

# WSMR METEOROLOGICAL SITES





PROJECT SURFACE OBSERVATION

TABLE 1 STATION Brillo  
 DATE 03 Aug 83 X= 443,093.12 Y= 386,316.94 H= 3962.25  
DAY MONTH YEAR

TIME M D T	PRESSURE mbs	TEMPERATURE of °C	DEW POINT of °C	RELATIVE HUMIDITY %	DENSITY gm/m <sup>3</sup>	WIND		VISIBIL- ITY
						DIRECTION degs Tn	SPEED kts	
0948	884.1	26.2	16.7	56			CALM	40
1003	883.9	27.2	16.6	53			CALM	40
1016	883.7	28.3	16.4	49		040	04	40

OBSTRUCTIONS TO VISIBILITY	CLOUDS						REMARKS
	1st LAYER		2nd LAYER		3rd LAYER		
	AMT	HGT	AMT	HGT	AMT	HGT	
	10	AS	10000				HALQDS BINOV S
	10	AS	10000				HALQDS BINOV ALQDS
	0	CU	6500	10	AS	10000	#HALQDS BINOV ALQDS

PSYCHROMETRIC COMPUTATION

TIME: MDT	0948	1002	1016
DRY BULB TEMP.	26.2	27.2	28.3
WET BULB TEMP.	19.6	19.8	20.0
WET BULB DEPR.	6.6	7.4	8.3
DEW POINT	16.7	16.6	16.4
RELATIVE HUMID.	56	53	49

TABLE 2

Anemometer Data - 30 FT. Level of 30 Meter Tower

X= 441,018.71 Y= 386,849.19 H= 4,004.80 (BASE)

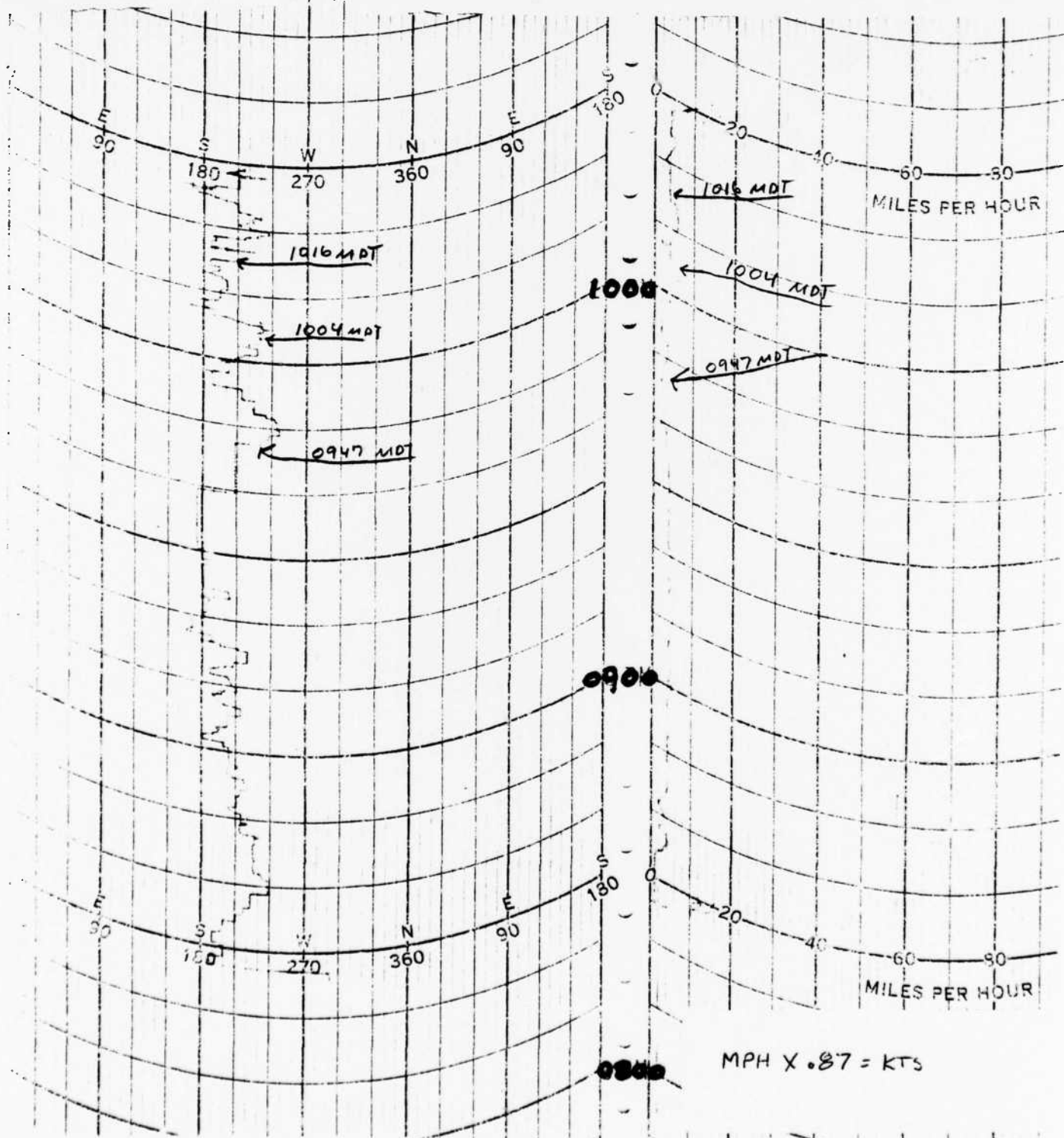


TABLE 3

Anemometer Data - 60 FT. Level of 30 Meter Tower

X= 441,018.71 Y= 386,849.19 H= 4,004.80 (BASE)

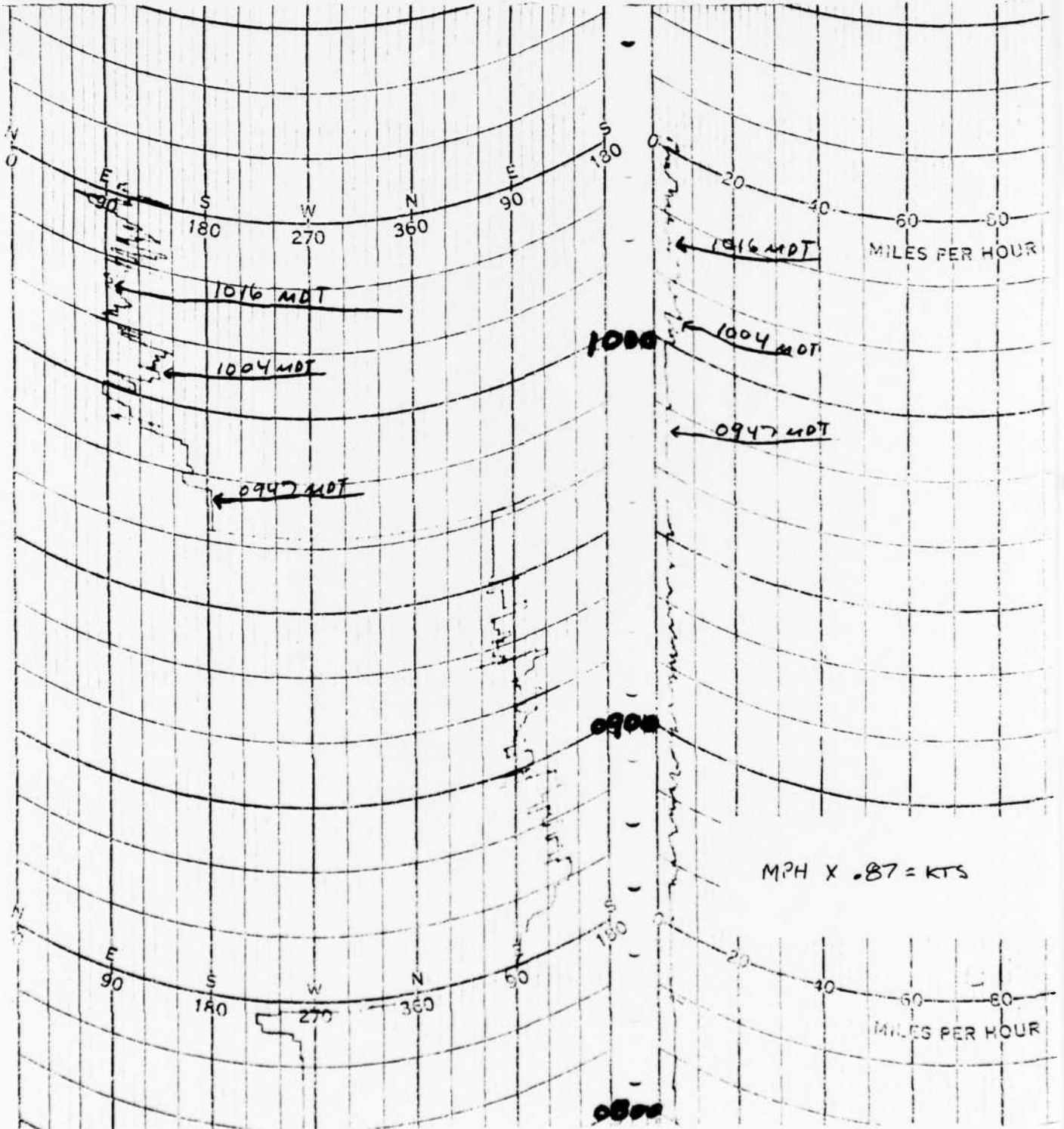


TABLE 4

Anemometer Data - 90 FT Level of 30 Meter Tower

X= 441,018.71 Y= 336,849.19 H= 4,004.80 (BASE)

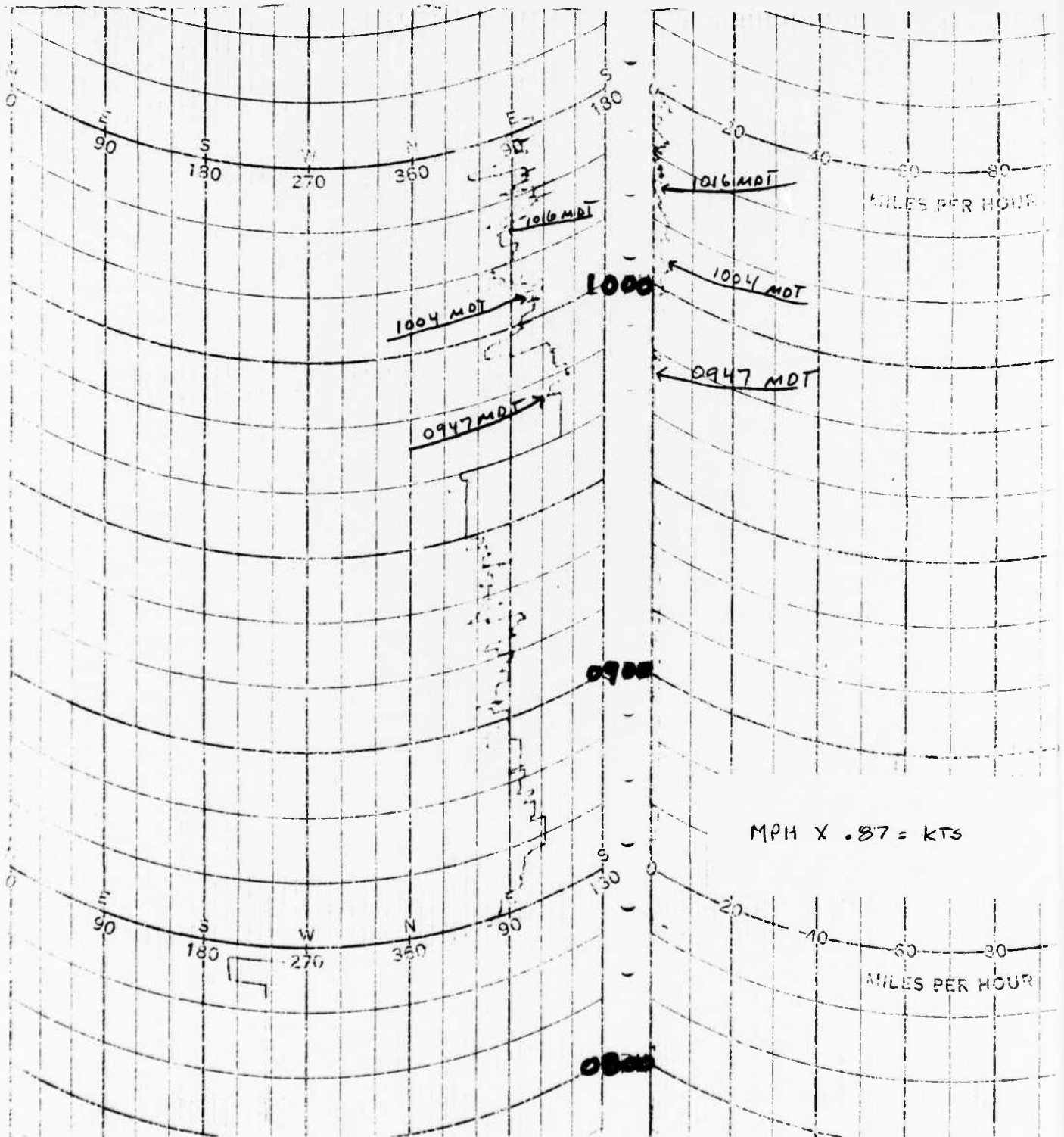


TABLE 5

T-TIME PILOT-BALLOON MEASURED WIND DATA

DATE 3 Aug 83

SITE: D 3½  
TIME: 1011 MDT  
WSTM COORDINATES:  
X= 443,093.12  
Y= 386,316.94  
H= 3,962.25

SITE: MAL  
TIME 0950 MDT  
WSTM COORDINATES:  
X= 509,421.05  
Y= 495,563.18  
H= 4,126.81

LAYER MIDPOINT METERS AGL	DIRECTION DEGREES	SPEED KNOTS	LAYER MIDPOINT METERS AGL	DIRECTION DEGREES	SPEED KNOTS
SURFACE		CALM	SURFACE		CALM
150	146	03	150	289	03
210	148	03	210	296	04
270	150	03	270	300	03
330	145	03	330	307	03
390	143	04	390	317	02
500	143	04	500	002	01
650	159	04	650	065	02
800	169	07	800	227	03
950	172	09	950	181	04
1150	191	07	1150	180	09
1350	224	06	1350	182	09
1550	235	06	1550	210	08
1750	267	04	1750		MISG
2000	305	04	2000		MISG

All data obtained from double Theodolite Tracked pilot-balloon observations.

TABLE 6

## AIMING AND T-TIME COMPUTER MET MESSAGES

3 August 1983

E-28 0655 MDT	JALLEN 0655 MDT	E-28 1004 MDT
METCM1329065	METCM1332065	METCM1329065
031290119887	031290124882	031610119888
00604002 29900887	00000000 29640882	00111111 30610888
01629005 29930877	01319006 29760872	01092003 30160878
02597004 29780852	02635004 29680847	02153003 29900853
03301003 29490814	03155002 29400809	03286003 29610815
04338005 29130768	04493010 29050763	04333005 29250769
05374003 28740724	05442004 28670719	05402005 28840725
06640004 28370682	06538004 28270677	06581003 28450683
07640004 28020642	07630010 27810637	07021006 28100643
08638009 27670604	08608012 27570599	08061001 27730605
09619008 27360568	09620009 27330563	09000000 27380569
10530002 27080533	10630007 27060529	10568002 27040534
11622004 26720501	11593004 26700496	11552006 26780502
12027009 26320454	12626005 26250451	12596007 26330456
13044012 25670399	13030012 25690395	13059014 25700400
14070011 24990349	14031013 24970345	14091014 25000349
15073012 24230304	15046014 24130301	15086014 24480305
16080016 23410263	16072013 23300260	16100021 23460264
17109021 22550227	17108022 22440224	17101024 22570228
18111025 21680195	18102027 21600192	18105027 21720196
19108024 20970166	19116026 20980164	19122021 21210167
20179006 20650141	20234008 20550139	20167010 20670142
21094010 20180119	21142006 20090118	21126016 20200120
22129021 20380101	22122023 20370099	22156023 20380102
23190020 20600086	23176024 20690084	23210013 20650086
24179016 20830073	24179014 20910072	24158022 21080073
25145023 21220062	25145021 21210061	25187025 21350062
26149021 21530053	26128015 21410052	26181018 21550053

STATION ALTITUDE 5912.75 FEET MSL  
 3 AUG. 83 0655 MDT  
 ASCENSION NO. 43

SIGNIFICANT LEVEL DATA  
 2150290043  
 FAST-28/CHEERY  
 TABLE 7

GEODETTIC COORDINATES  
 32.89927 LAT DEG  
 136.40591 LON DEG

PRESSURE MILLIBARS	GEOMETRIC ALTITUDE MGL FEET	TEMPERATURE AIR DEGREES	TEMPERATURE DEWPOINT CENTIGRADE	REL. HUM. PERCENT
897.1	3912.7	23.8	14.2	55.0
881.1	4108.2	24.4	15.3	57.0
850.0	5140.5	22.4	12.9	55.0
762.1	8230.1	16.4	6.0	50.0
706.0	10505.9	10.7	4.4	65.0
612.9	14105.1	3.3	2.0	91.0
592.3	15095.3	1.1	.7	97.0
551.7	17033.9	-3.2	-3.6	97.0
516.2	18702.5	-5.3	-5.0	98.0
500.0	19525.3	-6.6	-9.3	81.0
487.0	20201.7	-7.9	-8.4	96.0
463.4	21469.7	-9.7	-10.0	98.0
432.6	23209.2	-12.6	-10.4	73.0
417.8	24082.1	-14.0	-17.6	74.0
407.2	24722.2	-16.0	-19.7	73.0
400.0	25164.2	-16.8	-21.0	70.0
386.1	26030.1	-18.3	-29.6	30.0
357.9	27887.2	-21.8	-30.8	24.0
347.2	28620.3	-23.5	-37.5	20.0
318.2	30699.7	-28.4	-37.5	41.0
300.0	32081.4	-31.5	-38.6	48.0
263.3	35075.5	-39.1	-40.7	44.0
250.0	36238.7	-42.0		
240.0	37144.2	-44.5		
200.0	41070.6	-54.0		
176.7	43640.0	-61.6		
167.7	44700.8	-63.9		
154.3	46388.7	-64.6		
150.0	46958.6	-64.1		
120.7	49853.3	-70.0		
119.7	51416.8	-72.9		
111.3	52834.8	-70.0		
100.0	54239.3	-69.5		
70.0	62053.5	-64.2		
66.7	63029.0	-64.1		
60.1	65160.4	-59.4		
50.0	68905.4	-57.2		
37.7	74918.3	-55.0		

STATION ALTITUDE 3,912.75 FEET MSL  
 3 AUG. 83 0655 MDT  
 ASCENSION NO. 43

UPPER AIR DATA  
 2150290043  
 EAST-28/CHEERY  
 TABLE 8

GEODEIC COORDINATES  
 32.89927 LAT DEG  
 136.40591 LON DEG

GEOMETRIC ALTITUDE MSL FEET	PRESSURE MILLIBARS	TEMPERATURE		REL. HUM. PERCENT	DENSITY GM/CUBIC METER	SPEED OF SOUND KNOTS	WIND DATA		INDEX OF REFRACTION
		AIR DEGREES	DEWPOINT CENTIGRAD				DIRECTION ULGRES(TN)	SPEED KNOTS	
3912.7	807.1	23.8	14.2	55.0	1033.5	673.7	340.0	1.9	1.000300
4000.0	804.4	24.1	14.7	55.9	1029.2	674.1	340.0	2.1	1.000301
4500.0	869.2	23.6	14.4	56.2	1012.9	673.6	340.2	2.7	1.000297
5000.0	884.2	22.7	13.2	55.3	999.1	672.3	340.3	3.4	1.000289
5500.0	893.3	21.7	12.1	54.4	985.3	671.1	335.2	2.2	1.000281
6000.0	824.6	20.7	11.0	53.6	971.6	669.9	181.8	1.0	1.000274
6500.0	810.1	19.0	9.9	52.8	956.0	668.7	174.2	4.9	1.000267
7000.0	790.0	18.0	8.7	52.0	944.7	667.4	175.1	6.1	1.000261
7500.0	782.0	17.8	7.0	51.2	931.5	666.2	180.7	5.1	1.000254
8000.0	760.3	16.8	6.5	50.4	918.6	665.0	189.1	4.6	1.000248
8500.0	754.7	15.7	5.8	51.7	905.8	663.7	190.8	4.5	1.000244
9000.0	741.2	14.5	5.6	54.9	893.4	662.3	200.6	5.0	1.000241
9500.0	720.0	13.3	5.3	58.1	881.1	660.9	207.0	3.6	1.000237
10000.0	710.0	12.1	4.9	61.3	869.1	659.5	220.3	1.8	1.000234
10500.0	702.2	10.9	4.5	64.5	857.2	658.1	312.6	1.4	1.000231
11000.0	689.4	9.0	4.2	68.0	844.8	656.9	350.6	2.8	1.000227
11500.0	670.8	8.8	4.0	71.6	832.3	655.7	12.2	4.3	1.000224
12000.0	664.4	7.8	3.7	75.2	820.1	654.5	21.2	4.6	1.000221
12500.0	652.2	6.0	3.4	78.0	808.1	653.3	15.0	4.5	1.000210
13000.0	640.3	5.7	3.0	82.4	796.3	652.1	357.0	4.4	1.000214
13500.0	620.6	4.7	2.0	86.1	784.6	650.8	350.3	5.8	1.000211
14000.0	617.1	3.7	2.1	89.7	773.2	649.6	349.1	7.4	1.000208
14500.0	603.7	2.5	1.5	93.1	762.1	648.2	357.0	8.3	1.000204
15000.0	594.4	1.3	.8	96.4	751.3	646.8	359.6	9.1	1.000200
15500.0	500.3	.5	.1	97.0	739.6	645.7	359.1	9.5	1.000196
16000.0	572.3	-.3	-.7	97.0	727.8	644.8	350.6	0.2	1.000192
16500.0	561.5	-1.0	-1.4	97.0	716.1	643.8	340.3	6.5	1.000180
17000.0	550.9	-1.8	-2.2	97.0	704.7	642.9	322.8	4.1	1.000184
17500.0	540.5	-2.5	-3.0	97.0	693.5	642.0	308.4	2.6	1.000180
18000.0	530.3	-3.4	-3.8	97.1	682.6	640.9	292.6	1.4	1.000176
18500.0	520.2	-4.7	-5.0	97.7	673.2	639.2	327.4	2.0	1.000172
19000.0	510.3	-5.0	-6.9	91.9	663.0	637.9	343.1	3.1	1.000167
19500.0	500.5	-6.6	-9.2	81.5	652.5	636.8	350.1	4.4	1.000162
20000.0	490.8	-7.5	-9.6	91.5	642.1	635.7	353.0	5.2	1.000160
20500.0	481.3	-8.3	-9.8	96.5	631.6	634.8	355.0	5.9	1.000158
21000.0	472.0	-9.0	-9.4	97.3	621.1	633.9	2.6	6.3	1.000155
21500.0	462.8	-9.0	-10.1	97.6	610.7	633.0	10.1	7.1	1.000152
22000.0	453.8	-10.6	-11.0	90.4	600.8	631.9	17.2	8.7	1.000147
22500.0	444.9	-11.4	-13.7	83.2	591.1	630.8	20.9	10.0	1.000143
23000.0	430.2	-12.3	-15.6	76.0	581.5	629.8	23.1	11.0	1.000140

STATION ALTITUDE 5912.75 FEET MSL  
 3 AUG. 83 0655 MDT  
 ASCENSION NO. 93

UPPER AIR DATA  
 2150290043  
 EAST-2B/CILRRY  
 TABLE 8 Cont'd

GEODEIC COORDINATES  
 32.89927 LAT DEG  
 136.40591 LON DEG

GEOMETRIC ALTITUDE MSL FEET	PRESSURE MILLIBARS	TEMPERATURE AIR DEGREES DEWPOINT CENTIGRADE	REL.HUM. PERCENT	DENSITY GM/CM <sup>3</sup> METER	SPEED OF SOUND KNOTS	WIND DATA DIRECTION DEGREES(TN)	SPEED KNOTS	INDEX OF REFRACTION
23500.0	427.6	-13.1	-16.8	73.3	571.9	028.7	25.9	1.000137
24000.0	419.2	-13.9	-17.5	73.9	562.4	027.7	27.1	1.000134
24500.0	410.8	-15.3	-19.0	73.3	554.4	026.0	25.8	1.000131
25000.0	402.7	-16.5	-20.5	71.1	545.9	024.5	23.2	1.000128
25500.0	394.5	-17.4	-23.8	56.9	537.0	023.3	20.6	1.000125
26000.0	386.7	-18.2	-29.2	37.4	528.1	022.2	23.1	1.000121
26500.0	378.8	-19.2	-31.3	33.0	519.4	021.0	27.7	1.000118
27000.0	371.1	-20.1	-33.2	29.8	510.6	019.8	33.9	1.000116
27500.0	363.6	-21.1	-35.2	26.5	502.4	018.6	36.5	1.000114
28000.0	356.2	-22.1	-36.9	24.3	494.1	017.4	30.2	1.000112
28500.0	348.9	-23.2	-37.4	25.7	486.2	016.0	39.0	1.000110
29000.0	341.7	-24.4	-37.3	28.7	478.4	014.5	40.3	1.000108
29500.0	334.6	-25.6	-37.2	32.3	470.7	013.1	42.2	1.000106
30000.0	327.7	-26.8	-37.3	36.0	463.1	011.6	47.5	1.000105
30500.0	320.9	-27.9	-37.4	39.6	455.7	010.1	53.8	1.000103
31000.0	314.2	-29.1	-37.7	42.5	448.3	008.7	53.0	1.000101
31500.0	307.5	-30.2	-38.2	45.1	440.8	007.3	50.2	1.000100
32000.0	301.0	-31.3	-38.7	47.6	433.5	005.9	37.3	1.000098
32500.0	294.6	-32.6	-39.9	47.4	426.4	004.3	26.9	1.000096
33000.0	288.2	-33.8	-41.2	46.8	419.5	002.7	24.7	1.000095
33500.0	282.0	-35.1	-42.5	46.1	412.6	001.1	30.5	1.000093
34000.0	275.9	-36.4	-43.9	45.4	405.9	599.5	40.1	1.000091
34500.0	270.0	-37.6	-45.2	44.8	399.3	597.9	43.4	1.000090
35000.0	264.2	-38.9	-46.5	44.1	392.8	596.3	45.4	1.000088
35500.0	258.4	-40.2	-51.6	27.9**	386.3	594.7	46.2	1.000086
36000.0	252.7	-41.4	-61.6	9.0**	379.8	593.1	49.3	1.000085
36500.0	247.1	-42.7			373.5	591.4	52.8	1.000083
37000.0	241.6	-44.1			367.4	589.6	56.8	1.000082
37500.0	236.1	-45.4			361.1	587.9	59.9	1.000080
38000.0	230.7	-46.7			354.9	586.2	61.4	1.000079
38500.0	225.4	-48.1			348.8	584.5	62.5	1.000078
39000.0	220.2	-49.4			342.8	582.8	63.4	1.000076
39500.0	215.2	-50.7			336.9	581.1	63.7	1.000075
40000.0	210.2	-52.0			331.1	579.4	63.7	1.000074
40500.0	205.4	-53.3			325.5	577.7	63.4	1.000072
41000.0	200.7	-54.6			319.9	575.9	62.9	1.000071
41500.0	196.0	-55.9			314.3	574.2	62.5	1.000070
42000.0	191.3	-57.2			308.7	572.4	62.4	1.000069
42500.0	186.7	-58.6			303.2	570.7	61.1	1.000068
43000.0	182.3	-59.9			297.8	568.9	59.0	1.000066

\*\* AT LEAST ONE ASSUMED RELATIVE HUMIDITY VALUE WAS USED IN THE INTERPOLATION.

STATION ALTITUDE 3912.75 FEET MSL  
 3 AUG. 83 0655 MDT  
 ASCENSION NO. 43

UPPER AIR DATA  
 2150290043  
 EAST-28/CHERRY  
 TABLE 8 Cont'd

GEOMETRIC COORDINATES  
 32-89927 LAT DEG  
 136-40591 LON DEG

GEOMETRIC ALTITUDE MSL FEET	PRESSURE MILLIBARS	TEMPERATURE		REL. HUM. PERCENT	DENSITY GM/CUBIC METER	SPEED OF SOUND KNOTS	WIND DATA		INDEX OF REFRACTION
		AIR DEGREE C.	DEWPOINT CENTIGRADE				DIRECTION DEGREES (TN)	SPEED KNOTS	
43500.0	170.9	-61.2			292.5	567.2	57.3	28.5	1.000065
44000.0	173.7	-62.4			297.0	565.6	55.9	29.8	1.000064
44500.0	169.4	-63.4			201.5	564.2	57.4	28.0	1.000063
45000.0	165.3	-64.0			275.3	563.4	60.3	25.3	1.000061
45500.0	161.2	-64.2			268.9	563.1	65.0	21.3	1.000060
46000.0	157.3	-64.4			262.6	562.8	72.3	17.2	1.000058
46500.0	153.5	-64.5			256.2	562.7	79.2	13.7	1.000057
47000.0	149.7	-64.2			249.5	563.2	89.3	10.5	1.000056
47500.0	146.0	-65.2			244.5	561.8	98.6	7.8	1.000054
48000.0	142.4	-66.2			239.7	560.4	114.4	5.5	1.000053
48500.0	138.8	-67.2			234.9	559.0	114.2	4.6	1.000052
49000.0	135.4	-68.3			230.2	557.6	109.9	3.8	1.000051
49500.0	132.0	-69.3			225.6	556.3	102.7	3.8	1.000050
50000.0	128.7	-70.3			221.0	554.9	95.6	3.9	1.000049
50500.0	125.5	-71.2			216.4	553.6	69.0	4.0	1.000048
51000.0	122.3	-72.1			211.9	552.4	53.0	6.5	1.000047
51500.0	119.2	-72.7			207.2	551.5	47.8	10.6	1.000046
52000.0	116.2	-71.7			200.9	552.9	46.4	14.6	1.000045
52500.0	113.2	-70.7			194.8	554.3	51.9	16.6	1.000043
53000.0	110.4	-70.0			189.2	555.3	56.3	18.6	1.000042
53500.0	107.6	-69.0			184.4	555.5	61.1	19.3	1.000041
54000.0	104.9	-69.7			179.6	555.6	65.6	20.1	1.000040
54500.0	102.3	-69.6			175.0	555.8	69.2	20.7	1.000039
55000.0	99.7	-69.5			170.5	556.0	72.5	21.4	1.000038
55500.0	97.2	-69.1			166.0	556.5	79.0	21.5	1.000037
56000.0	94.8	-68.7			161.6	557.0	85.4	21.8	1.000036
56500.0	92.5	-68.3			157.3	557.5	90.1	21.2	1.000035
57000.0	90.2	-68.0			153.1	558.0	94.7	20.6	1.000034
57500.0	88.0	-67.6			149.1	558.6	98.7	20.8	1.000033
58000.0	85.0	-67.2			145.1	559.1	102.2	21.4	1.000032
58500.0	82.7	-66.8			141.3	559.6	107.6	21.2	1.000031
59000.0	81.6	-66.5			137.5	560.1	116.1	20.2	1.000031
59500.0	79.6	-66.1			133.9	560.6	122.9	18.9	1.000030
60000.0	77.6	-65.7			130.3	561.1	124.4	16.0	1.000029
60500.0	75.7	-65.4			126.9	561.6	122.8	13.6	1.000028
61000.0	73.8	-65.0			123.5	562.1	108.1	14.0	1.000028
61500.0	72.0	-64.6			120.2	562.6	95.6	15.3	1.000027
62000.0	70.2	-64.2			117.0	563.1	69.9	17.9	1.000026
62500.0	68.5	-64.2			114.1	563.2	65.5	20.6	1.000025
63000.0	66.8	-64.1			111.3	563.3	79.5	21.4	1.000025

STATION ALTITUDE 5912.75 F. FT MSL  
 3 AUG. 83 0655 MDT  
 ASCENSION NO. 43

UPPER AIR DATA  
 215029H043  
 FAST-28/CILKRY  
 TABLE 8 Con't

GEODETIC COORDINATES  
 32-89927 LAT DEG  
 136-40591 LONG DEG

GEOMETRIC ALTITUDE MSL FEET	PRESSURE MILLIBARS	TEMPERATURE AIR DEGREE DEGREES CENTIGRADE	REL. HUM. PERCENT	DENSITY GM/CUBIC METER	SPEED OF SOUND KNOTS	WIND DATA DIRECTION DEGREES (TN)	SPEED KNOTS	INDEX OF REFRACTION
63500.0	65.2	-63.1		108.1	564.7	74.1	22.5	1.000024
64000.0	63.6	-62.0		104.9	566.2	73.0	22.8	1.000023
64500.0	62.1	-60.9		101.9	567.6	72.8	22.8	1.000023
65000.0	60.6	-59.0		98.9	569.1	74.8	22.6	1.000022
65500.0	59.1	-59.2		96.3	569.8	79.9	22.0	1.000021
66000.0	57.7	-50.9		93.9	570.2	85.3	21.6	1.000021
66500.0	56.3	-58.6		91.5	570.6	86.8	21.6	1.000020
67000.0	55.0	-58.3		89.2	571.0	88.3	21.7	1.000020
67500.0	53.7	-58.1		87.0	571.4	89.0	22.2	1.000019
68000.0	52.4	-57.8		84.8	571.7	89.2	23.0	1.000019
68500.0	51.2	-57.5		82.7	572.1	89.8	23.7	1.000018
69000.0	50.0	-57.2		80.6	572.5	93.6	23.7	1.000018
69500.0	48.8	-57.0		78.6	572.7	97.4	23.8	1.000018
70000.0	47.6	-56.8		76.7	573.0	101.9	23.6	1.000017
70500.0	46.5	-56.6		74.9	573.2	106.9	23.3	1.000017
71000.0	45.4	-56.5		73.0	573.5	111.8	23.1	1.000016
71500.0	44.4	-56.3		71.3	573.7	115.3	21.9	1.000016
72000.0	43.3	-56.1		69.5	574.0	119.2	20.9	1.000015
72500.0	42.3	-55.9		67.8	574.2	118.8	20.1	1.000015
73000.0	41.3	-55.7		66.2	574.5	115.0	19.6	1.000015
73500.0	40.3	-55.5		64.6	574.7			1.000014
74000.0	39.4	-55.3		63.0	575.0			1.000014
74500.0	38.5	-55.2		61.5	575.2			1.000014

STATION ALTITUDE 5912.75 FEET MSL  
 3 AUG. 43 0655 MDT  
 ASCENSION NO. 43

MANDATORY LEVELS  
 2150290043  
 EAST-28/CILKRY  
 TABLE 9

GEODLTIC COORDINATES  
 32.84927 LAT DEG  
 136.40591 LONG DEG

PRESSURE GEOPOTENTIAL		TEMPERATURE		REL. HUM.	WIND DATA	
MILLIBARS	FEET	AIR DEGREES	DEWPOINT CENTIGRAD	PERCENT	DIRECTION DEGREES (TN)	SPEED KNOTS
850.0	5137.	22.4	12.9	55.	340.3	3.6
800.0	6059.	19.1	9.1	52.	173.9	6.3
750.0	8670.	15.3	5.8	53.	198.2	4.7
700.0	10576.	10.7	4.4	65.	322.5	1.7
650.0	12592.	6.6	3.3	80.	11.5	4.4
600.0	14735.	1.9	1.2	95.	359.8	8.8
550.0	17027.	-1.9	-2.3	97.	324.5	3.9
500.0	19498.	-6.6	-9.3	81.	350.3	4.4
450.0	22141.	-10.9	-12.6	87.	19.4	9.4
400.0	25122.	-16.8	-21.0	70.	22.2	13.0
350.0	28375.	-23.1	-37.3	25.	36.9	10.6
300.0	32018.	-31.5	-38.8	48.	35.4	11.2
250.0	36159.	-42.0			50.9	18.2
200.0	40977.	-54.8			62.8	24.0
175.0	43732.	-62.0			56.4	29.3
150.0	46832.	-64.1			87.7	10.9
125.0	50430.	-71.3			66.9	4.9
100.0	54770.	-69.5			72.0	21.3
80.0	59173.	-66.2			122.3	19.8
70.0	61841.	-64.2			89.7	18.0
60.0	64962.	-59.4			76.5	22.4
50.0	68727.	-57.2			93.3	23.7
40.0	73376.	-55.5				

\*\* AT LEAST ONE ASSUMED RELATIVE HUMIDITY VALUE WAS USED IN THE INTERPOLATION.

STATION ALTITUDE 4051.10 FEET MSL  
 3 AUG. 53 0655 MDT  
 ASCENSION NO. 106

SIGNIFICANT LEVEL DATA  
 L 150030106  
 JALLEN  
 TABLE 10

GEODEIC COORDINATES  
 35.16717 LAT DEG  
 106.49511 LON DEG

PRESSURE MILLIBARS	GEOMETRIC ALTITUDE MSL FEET	TEMPERATURE		REL. HUM. PERCENT
		AIR DEGREES	DEWPOINT CENTIGRADE	
101.8	4051.0	21.0	17.3	82.0
977.8	4190.9	22.1	14.7	63.0
867.0	4535.4	22.8	14.0	60.0
800.0	5102.2	21.9	13.0	57.0
776.7	7646.3	18.9	6.3	57.0
700.0	10539.7	10.5	4.6	57.0
693.1	10211.3	10.4	4.1	55.0
664.9	11942.5	6.7	3.3	79.0
650.2	12544.9	4.5	2.0	84.0
564.8	16287.5	-6.8	-1.2	97.0
552.0	17855.8	-3.0	-3.5	96.0
500.0	19464.4	-6.5	-6.9	97.0
460.8	21549.7	-10.3	-11.1	96.0
453.1	21976.6	-10.8	-11.2	97.0
435.8	22959.5	-12.4	-13.8	89.0
400.0	25102.0	-15.9	-21.1	64.0
384.9	26060.4	-17.5	-25.2	51.0
377.7	26505.4	-18.9	-25.6	53.0
371.7	26910.0	-19.4	-28.8	43.0
359.9	29072.1	-24.3	-37.2	29.0
314.1	30953.7	-29.3	-36.4	50.0
309.0	32027.6	-32.2	-39.5	46.0
277.5	33823.5	-36.5	-43.7	47.0
264.5	34703.3	-39.3	-44.2	59.0
250.0	36175.0	-42.7		
207.0	41002.6	-55.2		
186.7	42436.4	-58.8		
186.4	45047.7	-65.3		
150.0	46886.4	-64.3		
129.1	50019.5	-71.2		
119.1	51473.7	-73.2		
111.5	52711.8	-71.9		
104.5	53972.7	-71.9		
100.0	54845.4	-58.5		
70.0	61973.5	-51.5		
66.5	63671.6	-63.9		
59.8	65182.7	-59.9		
55.3	66720.0	-60.1		
50.0	67880.9	-58.5		
35.5	76071.0	-54.1		

STATION ALTITUDE 4051.00 FEET MSL  
3 AUG. 83 0655 MDT  
ASCENSION NO. 105

SIGNIFICANT LEVEL DATA  
2150030105  
JALLEN

GEODETIC COORDINATES  
33.16712 LAT DEG  
106.49511 LON DEG

TABLE 10 Cont'd

PRESSURE MILLIBARS	GEOMETRIC ALTITUDE MSL FEET	TEMPERATURE		REL. HUM. PERCENT
		AIR DEGREES	DEWPOINT CENTIGRADE	
30.0	79690.7	-45.2		
27.4	61691.4	-44.8		
20.0	54536.2	-48.5		
17.7	41242.6	-47.7		

STATION ALTITUDE 4051.0 FEET MSL  
 3 AUG. 83 0655 MDT  
 ASCENSION NO. 106

UPPER AIR DATA  
 215073106  
 JALLEN

GEODEIC COORDINATES  
 33.16712 LAT DEG  
 106.49511 LONG DEG

TABLE 11

GLOMETRIC ALTITUDE MSL FEET	PRESSURE MILLIBARS	TEMPERATURE		REL. HUM. PERCENT	DENSITY GM/CUBIC METER	SPEED OF SOUND KNOTS	WIND DATA		INDEX OF REFRACTION
		AIR DEGREES CENTIGRADE	DEWPOINT CENTIGRADE				DIRECTION DEGREES (TN)	SPEED KNOTS	
4051.0	651.6	1.0	17.6	82.0	1035.2	671.1	0	0	1.000320
4500.0	666.1	2.7	14.6	50.3	1014.6	672.6	27.9	6	1.000296
5000.0	680.0	2.1	13.3	57.5	999.8	671.6	27.9	1.3	1.000284
5500.0	693.1	1.1	12.3	57.0	985.8	670.5	27.9	1.9	1.000282
6000.0	706.5	0.1	11.4	57.0	972.1	669.2	36.8	2.1	1.000276
6500.0	720.1	0.2	10.4	57.0	958.5	668.0	64.1	1.9	1.000270
7000.0	733.9	0.2	9.5	57.0	945.2	666.8	317.4	1.3	1.000256
7500.0	748.0	0.2	8.6	57.0	932.0	665.6	267.3	6.4	1.000258
8000.0	762.1	0.1	7.9	56.2	919.0	664.3	277.4	8.9	1.000253
8500.0	776.4	0.0	7.3	54.9	906.1	663.0	265.8	9.9	1.000244
9000.0	790.8	0.0	6.7	61.7	893.5	661.7	254.6	8.6	1.000244
9500.0	805.7	0.0	6.0	63.4	881.0	650.4	242.1	6.4	1.000240
10000.0	820.8	0.0	5.4	55.1	868.8	659.1	237.5	4.9	1.000235
10500.0	836.0	0.0	4.7	66.9	856.7	657.7	231.9	4.6	1.000231
11000.0	851.3	0.0	4.0	67.3	843.7	656.3	318.7	5.1	1.000227
11500.0	866.3	0.0	3.7	73.5	831.2	654.9	400.2	6.0	1.000226
12000.0	881.5	0.0	3.2	79.5	822.9	652.9	347.9	6.4	1.000221
12500.0	896.8	0.0	2.1	83.6	813.3	650.7	251.7	6.5	1.000216
13000.0	912.2	0.0	1.7	85.6	800.5	649.7	351.5	7.0	1.000212
13500.0	927.3	0.0	1.2	87.3	787.7	648.9	332.7	7.9	1.000209
14000.0	942.6	0.0	0.8	89.1	775.0	648.0	350.1	9.3	1.000205
14500.0	958.1	0.0	0.4	90.8	762.6	647.2	445.1	11.3	1.000201
15000.0	973.8	0.0	-0.0	92.5	750.3	646.3	342.0	12.3	1.000196
15500.0	989.6	0.0	-0.5	94.3	738.3	645.5	336.6	11.3	1.000194
16000.0	1005.9	0.0	-1.0	96.0	726.5	644.6	339.8	9.9	1.000191
16500.0	1022.2	0.0	-1.5	95.9	714.7	643.8	445.2	8.1	1.000187
17000.0	1038.7	0.0	-2.3	96.5	702.1	642.9	350.4	7.2	1.000183
17500.0	1055.3	0.0	-2.5	96.2	691.7	642.0	353.4	7.1	1.000179
18000.0	1072.1	0.0	-3.6	95.1	680.8	641.0	333.9	6.7	1.000176
18500.0	1089.1	0.0	-4.9	96.4	670.4	639.5	449.9	5.8	1.000172
19000.0	1106.1	0.0	-5.9	96.7	660.6	638.3	444.7	5.0	1.000168
19500.0	1123.3	0.0	-7.1	97.0	650.7	636.9	358.3	4.3	1.000164
20000.0	1140.6	0.0	-7.6	97.3	640.7	635.7	334.7	4.1	1.000151
20500.0	1158.1	0.0	-7.6	97.5	630.8	634.4	336.7	4.6	1.000157
21000.0	1175.6	0.0	-9.7	97.7	621.1	633.1	336.5	4.7	1.000154
21500.0	1193.1	0.0	-11.0	98.0	611.5	631.8	335.5	4.5	1.000151
22000.0	1210.7	0.0	-11.2	98.0	602.9	631.0	344.4	4.4	1.000148
22500.0	1228.4	0.0	-11.7	98.7	593.5	630.5	339.4	4.7	1.000144
23000.0	1246.1	0.0	-14.0	98.5	584.4	629.6	340	5.2	1.000141
23500.0	1263.9	0.0	-15.6	98.7	575.8	628.5	347	8.5	1.000137

STATION ALTITUDE 4051.0 FEET MSL  
 3 AUG. 65 0655 MDT  
 ASCENSION NO. 106

UPPER AIR DATA  
 21000106  
 JALLEN

GEODEIC COORDINATES  
 33.16712 LAT DEG  
 106.49511 LONG DEG

TABLE 11 Cont'd

GEOMETRIC ALTITUDE MSL FEET	PRESSURE MILLIBARS	TEMPERATURE		REL. HUM. PERCENT	DENSITY GM/CUBIC METER	SPEED OF SOUND KNOTS	WIND DATA		INDEX OF REFRACTION
		AIR DEGREES CENTIGRADE	DEWPOINT CENTIGRADE				DIRECTION DEGREES (TN)	SPEED KNOTS	
24000.0	416.0	-14.1	-17.5	75.9	561.4	627.5	16.8	10.5	1.000134
24500.0	409.8	-14.9	-19.0	71.0	552.1	626.4	17.1	11.5	1.000131
25000.0	401.6	-15.7	-20.7	65.2	542.9	625.4	17.3	12.6	1.000126
25500.0	393.5	-16.6	-22.7	58.0	533.9	624.3	18.0	13.5	1.000123
26000.0	385.7	-17.4	-24.9	51.8	525.0	623.3	19.0	12.1	1.000122
26500.0	378.0	-18.4	-25.6	55.0	517.5	621.4	19.0	11.9	1.000120
27000.0	370.3	-19.5	-29.1	42.4	508.5	620.5	19.1	11.9	1.000116
27500.0	362.8	-20.7	-30.9	39.2	500.4	619.1	17.5	12.1	1.000114
28000.0	355.4	-21.9	-32.4	36.0	492.4	617.7	17.7	12.7	1.000112
28500.0	348.1	-23.2	-34.8	32.7	484.5	616.3	17.9	13.3	1.000110
29000.0	341.0	-24.1	-36.9	29.5	476.9	614.9	16.4	13.4	1.000108
29500.0	333.9	-25.4	-36.7	33.7	469.4	613.5	15.0	13.6	1.000106
30000.0	327.0	-26.8	-36.4	39.3	462.1	611.5	15.5	13.9	1.000105
30500.0	320.2	-28.1	-36.3	44.9	455.0	610.0	16.6	14.4	1.000103
31000.0	313.5	-29.4	-36.5	49.9	447.9	608.3	18.9	14.7	1.000101
31500.0	306.8	-30.5	-37.9	49.0	440.7	606.6	22.8	15.1	1.000100
32000.0	300.4	-32.1	-39.4	46.1	434.0	604.9	26.7	15.5	1.000096
32500.0	293.9	-33.5	-40.6	47.7	427.4	603.4	29.3	14.6	1.000096
33000.0	287.6	-34.5	-41.7	47.5	419.8	601.9	32.7	13.6	1.000095
33500.0	281.4	-35.7	-42.9	47.4	412.8	600.3	33.8	12.7	1.000093
34000.0	275.3	-37.0	-43.7	49.0	406.1	598.8	35.7	11.7	1.000091
34500.0	269.4	-38.5	-44.0	54.5	399.4	597.1	52.8	10.7	1.000090
35000.0	263.5	-39.6	-45.2	54.5**	392.9	595.5	55.8	11.4	1.000088
35500.0	257.6	-40.9	-51.2	31.3**	386.4	593.7	38.8	12.4	1.000086
36000.0	252.0	-42.2	-63.1	6.1**	380.1	592.0	44.2	14.3	1.000085
36500.0	246.3	-43.5			373.6	590.3	49.4	17.0	1.000083
37000.0	240.6	-44.8			367.2	588.7	54.1	19.1	1.000082
37500.0	235.1	-46.1			360.8	587.0	58.7	20.3	1.000080
38000.0	229.8	-47.4			354.6	585.3	63.0	21.6	1.000079
38500.0	224.5	-48.7			348.5	583.6	67.0	22.0	1.000076
39000.0	219.4	-50.0			342.5	581.9	62.0	22.4	1.000076
39500.0	214.4	-51.3			336.7	580.3	60.8	22.9	1.000075
40000.0	209.5	-52.6			330.9	578.6	59.7	23.5	1.000074
40500.0	204.7	-53.9			325.2	576.9	57.3	24.2	1.000072
41000.0	200.0	-55.2			319.7	575.1	55.7	24.8	1.000071
41500.0	195.5	-56.4			314.2	573.5	60.0	25.4	1.000070
42000.0	191.0	-57.7			308.8	571.8	59.1	26.4	1.000069
42500.0	186.1	-58.9			303.7	570.2	58.3	27.5	1.000067
43000.0	181.6	-59.5			298.6	569.0	57.7	27.8	1.000066
43500.0	177.2	-60.7			293.6	567.8	57.2	32.2	1.000065

\*\* AT LEAST ONE ASSIGNED RELATIVE HUMIDITY VALUE WAS USED IN THE INTERPOLATION.

STATION ALTITUDE 4051.00 FEET MSL  
 3 AUG. 83 0655 MDT  
 ASCENSION NO. 106

UPPER AIR DATA  
 2150030106  
 JALLEN  
 TABLE 11 Cont'd

GEODEIC COORDINATES  
 33.16712 LAT DEG  
 106.49511 LON DEG

GEODEIC ALTITUDE MSL FEET	PRESSURE MILLIBARS	TEMPERATURE		REL. HUM. PERCENT	DENSITY GM/CUBIC METER	SPEED OF SOUND KNOTS	WIND DATA		INDEX OF REFRACTION
		AIR DEGREES CENTIGRADE	DEWPOINT CENTIGRADE				DIRECTION DEGREES(TN)	SPEED KNOTS	
44000.0	172.9	-61.6			284.8	566.6	60.1	30.7	1.000063
44500.0	168.7	-62.5			279.1	565.4	64.5	28.4	1.000062
45000.0	164.6	-63.4			273.5	564.2	67.6	25.3	1.000061
45500.0	160.7	-64.3			268.0	563.0	70.5	21.8	1.000060
46000.0	156.8	-65.2			262.6	561.8	74.4	18.7	1.000058
46500.0	152.9	-66.1			257.6	562.4	80.7	15.1	1.000057
47000.0	149.2	-66.5			249.1	562.7	89.2	12.1	1.000055
47500.0	145.4	-65.6			244.2	561.2	104.9	9.3	1.000054
48000.0	141.6	-66.7			239.4	559.7	130.9	7.7	1.000053
48500.0	138.3	-67.9			234.7	558.2	155.5	7.3	1.000052
49000.0	134.9	-69.0			230.1	556.7	165.2	5.4	1.000051
49500.0	131.5	-70.1			225.6	555.2	184.4	3.8	1.000050
50000.0	128.2	-71.2			221.1	553.7	176.4	3.5	1.000049
50500.0	125.0	-71.9			216.3	552.7	167.3	3.4	1.000048
51000.0	121.8	-72.6			211.5	551.7	137.5	3.8	1.000047
51500.0	118.7	-73.1			206.7	551.0	109.1	5.6	1.000046
52000.0	115.7	-72.6			200.9	551.7	84.9	8.2	1.000045
52500.0	112.7	-72.1			195.3	552.4	69.6	12.1	1.000043
53000.0	109.9	-71.9			190.2	552.7	63.7	15.5	1.000042
53500.0	107.1	-71.9			185.3	552.7	60.8	18.4	1.000041
54000.0	104.4	-71.3			180.5	552.8	60.6	21.2	1.000040
54500.0	101.7	-70.0			174.4	555.3	62.0	23.8	1.000039
55000.0	99.2	-70.7			169.0	557.1	65.5	25.1	1.000038
55500.0	96.7	-68.3			164.5	557.6	71.8	25.1	1.000037
56000.0	94.3	-67.9			160.2	558.1	78.7	24.7	1.000036
56500.0	92.0	-67.6			155.9	558.6	87.2	23.5	1.000035
57000.0	89.7	-67.2			151.3	559.1	94.0	23.2	1.000034
57500.0	87.5	-66.8			147.8	559.6	93.7	24.0	1.000033
58000.0	85.4	-66.3			143.9	560.1	94.0	24.8	1.000032
58500.0	83.3	-66.1			140.1	560.6	98.0	24.8	1.000031
59000.0	81.2	-65.7			135.4	561.1	101.9	25.0	1.000030
59500.0	79.2	-65.3			132.9	561.6	107.2	27.5	1.000029
60000.0	77.3	-65.0			129.3	562.1	113.8	20.7	1.000029
60500.0	75.3	-64.6			125.9	562.6	111.7	17.0	1.000028
61000.0	73.3	-64.2			122.5	563.1	105.3	13.8	1.000027
61500.0	71.7	-63.9			119.3	563.6	99.9	13.0	1.000027
62000.0	69.9	-63.3			116.7	564.1	97.0	13.1	1.000026
62500.0	68.2	-63.7			113.4	563.8	89.0	14.4	1.000025
63000.0	66.5	-63.9			110.8	563.6	87.1	16.6	1.000025
63500.0	64.9	-63.6			107.6	564.8	85.0	18.5	1.000024

STATION ALTITUDE 4051.00 FEET MSL  
 3 AUG. 83 0655 MDT  
 ASCENSION NO. 106

UPPER AIR DATA  
 2150030106  
 JALLEN  
 TABLE 11 Cont'd

GEODETIC COORDINATES  
 33.16712 LAT DEG  
 106.69511 LON DEG

GEOMETRIC ALTITUDE MSL FEET	PRESSURE MILLIBARS	TEMPERATURE		REL. HUM. PERCENT	DENSITY GM/CUBIC METER	SPEED OF SOUND KNOTS	WIND DATA		INDEX OF REFRACTION
		AIR DEGREES CENTIGRADE	DEWPOINT CENTIGRADE				DIRECTION DEGREES(TN)	SPEED KNOTS	
6400.0	65.4	-72.1			104.5	566.0	81.5	19.9	1.000023
6450.0	61.8	-61.2			101.6	567.2	78.4	21.3	1.000023
6500.0	60.3	-60.2			98.7	568.5	80.7	21.6	1.000022
6550.0	58.9	-59.9			96.2	569.9	81.9	22.0	1.000021
6600.0	57.5	-60.0			93.9	568.8	81.6	20.7	1.000021
6650.0	56.1	-70.1			91.7	568.7	80.5	18.9	1.000020
6700.0	54.8	-59.9			89.5	568.6	78.0	17.2	1.000020
6750.0	53.5	-59.6			87.2	569.4	73.7	15.6	1.000019
6800.0	52.2	-59.2			84.9	569.9	67.7	14.3	1.000019
6850.0	50.9	-58.6			82.4	570.4	68.1	14.0	1.000016
6900.0	49.7	-58.4			80.7	570.9	68.4	13.8	1.000016
6950.0	48.5	-58.1			78.7	571.3	66.4	13.0	1.000018
7000.0	47.4	-57.8			76.7	571.7	67.0	12.1	1.000017
7050.0	46.3	-57.5			74.8	572.1	67.3	11.8	1.000017
7100.0	45.2	-57.2			72.9	572.5	66.7	14.0	1.000016
7150.0	44.1	-56.9			71.1	572.9	69.6	17.4	1.000016
7200.0	43.1	-56.6			69.3	573.3	105.1	27.4	1.000015
7250.0	42.1	-56.3			67.6	573.7	107.2	34.5	1.000015
7300.0	41.1	-56.0			65.9	574.1	107.7	47.1	1.000015
7350.0	40.1	-55.7			64.3	574.5	107.5	46.7	1.000014
7400.0	39.2	-55.4			62.7	574.9	99.7	46.7	1.000014
7450.0	38.3	-55.1			61.1	575.3	97.7	42.3	1.000014
7500.0	37.4	-54.8			59.6	575.7	94.9	35.1	1.000013
7550.0	36.5	-54.5			58.1	576.1	91.5	27.9	1.000013
7600.0	35.6	-54.1			56.7	576.5	90.1	28.2	1.000013
7650.0	34.8	-53.6			55.2	577.5	88.9	28.5	1.000012
7700.0	34.0	-53.6			53.7	578.6	87.6	29.2	1.000012
7750.0	33.2	-51.6			52.1	579.6	86.7	30.6	1.000012
7800.0	32.5	-51.6			50.7	580.7	85.0	32.0	1.000011
7850.0	31.7	-50.1			49.5	581.8	85.9	31.8	1.000011
7900.0	31.0	-49.3			48.2	582.8	85.1	30.7	1.000011
7950.0	30.3	-48.5			46.9	583.9	86.4	29.7	1.000010
8000.0	29.6	-47.7			45.7	585.0	91.4	27.3	1.000010
8100.0	28.9	-46.8			44.5	586.1	97.2	24.7	1.000010
8150.0	28.3	-46.0			43.3	587.2	94.9	22.2	1.000010
8200.0	27.6	-45.1			42.2	588.3	98.6	22.0	1.000009
8250.0	27.0	-45.0			41.2	588.5	98.7	21.7	1.000009
8300.0	26.4	-43.2			40.4	589.1	100.0	21.5	1.000009
8350.0	25.9	-43.6			39.5	587.7	100.0	20.4	1.000009
8400.0	25.2	-43.9			38.7	587.3	104.7	19.5	1.000009

STATION ALTITUDE 4051.0 FEET MSL  
 3 AUG. 83 0655 MDT  
 ASCENSION NO. 106

UPPER AIR DATA  
 2150030106  
 JALLEN  
 TABLE 11 Cont'd

GEODEIC COORDINATES  
 33.16712 LAT DEG  
 106.49511 LONG DEG

GEOMETRIC ALTITUDE MSL FEET	PRESSURE MILLIBARS	TEMPERATURE		REL. HUM. PERCENT	DENSITY GM/CUBIC METER	SPEED OF SOUND KNOTS	WIND DATA		INDEX OF REFRACTION
		°F	DEGREES CENTIGRADE				DIRECTION DEGREES (TN)	SPEED KNOTS	
4000.0	24.7	-46.1			37.8	587.0	106.4	18.7	1.000006
4250.0	24.1	-46.6			37.0	586.6	109.1	17.9	1.000008
4500.0	23.6	-46.7			36.2	585.2	111.9	17.1	1.000008
4750.0	23.0	-47.0			35.5	585.8	110.4	16.5	1.000006
5000.0	22.5	-47.3			34.7	585.5	104.8	16.1	1.000008
5250.0	22.0	-47.6			34.0	585.1	98.9	15.3	1.000008
5500.0	21.5	-47.9			33.3	584.7	97.3	14.2	1.000007
5750.0	21.0	-48.2			32.5	584.3	99.2	13.9	1.000007
6000.0	20.5	-48.5			31.9	584.0	100.5	17.6	1.000007
6250.0	20.1	-48.7			31.2	583.6	93.9	24.4	1.000007
6500.0	19.6	-48.8			30.5	583.7	89.4	32.6	1.000007
6750.0	19.2	-48.4			29.7	584.0	86.7	41.0	1.000007
7000.0	18.7	-48.2			29.0	584.3			1.000006
7250.0	18.3	-48.0			28.3	584.5			1.000006
7500.0	17.9	-47.8			27.7	584.8			1.000006

STATION ALTITUDE 4051.00 FEET MSL  
 3 AUG. 85 0655 MDT  
 ASCENSION NO. 100

MANDATORY LEVELS  
 215003010A  
 JALLEN  
 TABLE 12

GEODETIC COORDINATES  
 33.16712 LAT DEG  
 106.49511 LON DEG

PRESSURE GEOPOTENTIAL		TEMPERATURE		REL. HUM.	WIND DATA	
MILLIBARS	FEET	AIR	DEWPOINT	PERCENT	DIRECTION	SPEED
		DEGREES	CFNTIGRADE		DEGREES(TN)	KNOTS
500.0	5070.	21.9	17.0	57.	27.9	1.4
400.0	6319.	18.5	9.9	57.	59.6	1.2
300.0	8626.	14.7	7.2	60.	263.7	10.2
200.0	10530.	10.5	4.6	67.	294.2	4.9
150.0	12540.	4.5	2.0	84.	352.1	6.5
100.0	14677.	1.5	.2	91.	347.7	12.1
50.0	18764.	-1.8	-2.2	97.	330.3	7.2
500.0	19433.	-6.5	-6.9	97.	339.0	4.4
450.0	22117.	-11.1	-11.6	96.	349.8	4.4
400.0	25061.	-15.9	-21.1	64.	17.3	12.7
350.0	28322.	-22.7	-34.3	34.	17.8	13.1
300.0	31965.	-32.2	-39.5	48.	25.8	15.5
250.0	36027.	-42.7			46.2	15.1
200.0	40904.	-55.2			38.7	24.8
175.0	43669.	-61.2			38.2	31.9
150.0	46763.	-64.3			86.4	12.8
125.0	50353.	-71.9			167.8	3.4
100.0	54658.	-85.8			63.1	25.2
80.0	59066.	-85.5			104.5	23.7
70.0	61763.	-63.5			93.6	13.1
60.0	64863.	-60.0			50.5	21.7
50.0	68624.	-58.5			68.3	13.9
40.0	73258.	-55.6			103.4	46.7
30.0	79353.	-48.2			90.9	29.1
25.0	83334.	-46.0			135.0	19.3
20.0	88175.	-48.8			93.3	25.2

\*\* AT LEAST ONE ASSUMED RELATIVE HUMIDITY VALUE WAS USED IN THE INTERPOLATION.

STATION ALTITUDE 3912.75 FEET MSL  
 3 AUG. 63 1004 MDT  
 ASCENSION NO. 44

SIGNIFICANT LEVEL DATA  
 2150290044  
 FAST-28/CHERRY  
 TABLE 13

GEODETIC COORDINATES  
 32.89927 LAT DEG  
 136.40591 LON DEG

PRESSURE MILLIBARS	GEOMETRIC ALTITUDE MSL FEET	TEMPERATURE		REL. HUM. PERCENT
		AIR DEGREES	DEWPOINT CENTIGRADE	
887.8	3912.7	31.0	15.0	38.0
884.7	4014.9	26.0	13.5	46.0
880.0	4169.2	25.6	14.7	51.0
850.0	5169.4	23.7	12.0	48.0
750.2	8377.6	17.1	6.3	49.0
700.0	10633.0	11.3	4.5	63.0
691.8	10956.7	10.6	5.6	71.0
655.0	12448.9	7.6	4.0	78.0
600.1	14449.9	3.1	1.9	92.0
564.4	16427.5	-4.8	-1.2	97.0
521.4	18497.4	-4.8	-6.6	87.0
500.0	19581.2	-5.8	-10.9	67.0
466.9	21336.6	-9.5	-11.2	87.0
451.7	22175.4	-11.7	-12.7	92.0
446.7	22457.7	-9.2	-10.7	89.0
443.3	22651.7	-11.2	-12.8	88.0
400.0	25224.2	-16.4	-21.9	62.0
392.5	26327.7	-18.5	-25.1	56.0
370.3	27121.6	-20.0	-26.3	57.8
356.5	28044.6	-22.4	-30.6	47.0
336.5	29432.5	-25.4	-36.6	34.0
300.8	32140.0	-31.9	-40.8	21.0
267.3	34789.6	-38.4	-48.8	35.0
250.0	36792.7	-42.2		
200.0	41129.1	-54.9		
192.3	41952.6	-56.8		
173.5	44876.1	-61.9		
162.8	45380.0	-60.1		
150.0	47051.3	-63.5		
134.9	49170.1	-69.3		
119.7	51504.7	-72.7		
116.1	52097.6	-71.7		
114.9	52300.8	-69.9		
100.0	55030.2	-69.7		
92.2	56634.7	-67.8		
70.6	59569.1	-65.4		
70.8	62181.6	-60.5		
65.2	63645.8	-59.6		
59.8	65430.9	-59.8		
50.0	69154.6	-56.5		

STATION ALTITUDE 3912.75 FEET MSL  
3 AUG. 83 1004 MDT  
ASCENSION NO. 44

SIGNIFICANT LEVEL DATA  
2150290044  
CAST-28/CHERRY  
TABLE 13 Cont'd

GEODETIC COORDINATES  
32.89927 LAT DEG  
136.40591 LON DEG

PRESSURE	GEOMETRIC	TEMPERATURE	REL. HUM.
MILLIBARS	ALTITUDE	AIR	PERCENT
	MSL FEET	DEGREES	
		CENTIGRADE	
39.2	74275.9	-55.0	

STATION ALTITUDE 3912.75 FEET MSL  
 3 AUG. 83 1004 MDT  
 ASCENSION NO. 49

UPPER AIR DATA  
 2150290044  
 EAST-28/CHERRY  
 TABLE 14

GEODETTIC COORDINATES  
 32.89927 LAT DEG  
 136.40591 LON DEG

GEODETTIC ALTITUDE MSL FEET	PRESSURE MILLIBARS	TEMPERATURE AIR DEGREES CENTIGRADE	TEMPERATURE DEWPOINT DEGREES CENTIGRADE	REL. HUM. PERCENT	DENSITY GM/CUBIC METER	SPEED OF SOUND KNOTS	WIND DATA DIRECTION DEGREES (TN)	SPEED KNOTS	INDEX OF REFRACTION
3912.7	887.8	31.0	15.0	38.0	1009.5	601.9	.0	.0	1.000295
4000.0	885.2	26.7	13.8	44.0	1021.3	676.9	105.8	.1	1.000294
4500.0	870.0	25.0	13.8	50.0	1009.6	675.0	105.8	.6	1.000293
5000.0	855.0	24.0	12.5	48.5	995.9	673.7	105.8	1.1	1.000284
5500.0	840.2	23.0	11.5	40.1	982.2	672.5	105.8	1.6	1.000277
6000.0	825.5	22.0	10.6	40.3	968.7	671.2	137.6	2.0	1.000271
6500.0	811.1	21.0	9.7	48.4	955.3	670.0	160.0	2.7	1.000266
7000.0	796.9	19.9	8.8	40.6	942.2	668.7	175.8	3.1	1.000260
7500.0	783.0	18.9	7.9	48.7	929.2	667.5	184.5	3.9	1.000254
8000.0	769.4	17.9	7.0	48.9	916.4	666.2	188.1	4.8	1.000249
8500.0	755.9	16.8	6.2	49.0	903.9	664.9	195.6	5.6	1.000244
9000.0	742.4	15.5	5.9	52.9	891.7	663.5	203.1	6.1	1.000241
9500.0	729.1	14.2	5.6	56.0	879.8	662.0	217.9	5.1	1.000238
10000.0	716.1	12.9	5.1	59.1	868.0	660.5	235.0	4.1	1.000234
10500.0	703.4	11.6	4.7	62.2	856.4	659.0	260.3	3.0	1.000231
11000.0	690.7	10.5	5.5	71.2	844.0	657.8	300.2	2.8	1.000231
11500.0	678.2	9.5	5.0	73.5	831.7	656.6	331.4	3.9	1.000227
12000.0	665.9	8.5	4.5	75.9	819.6	655.4	350.3	4.0	1.000223
12500.0	653.8	7.5	4.0	78.4	807.7	654.2	1.3	5.5	1.000219
13000.0	641.7	6.4	3.5	81.9	796.1	652.8	4.6	3.7	1.000216
13500.0	629.9	5.2	3.0	85.4	784.7	651.5	6.0	1.8	1.000212
14000.0	618.3	4.1	2.4	88.9	773.5	650.1	236.5	.2	1.000208
14500.0	607.0	3.0	1.9	92.1	762.3	648.8	209.7	.5	1.000205
15000.0	595.6	2.0	1.1	95.4	750.9	647.6	213.1	.2	1.000200
15500.0	584.5	1.0	.3	94.7	739.6	646.4	26.5	1.9	1.000196
16000.0	573.6	.0	-.5	95.9	728.6	645.2	26.8	3.2	1.000192
16500.0	562.8	-.9	-1.4	96.6	717.6	644.0	27.0	3.3	1.000188
17000.0	552.2	-1.9	-2.7	94.2	706.7	642.7	19.3	2.6	1.000183
17500.0	541.7	-2.9	-4.0	91.8	696.0	641.5	343.7	1.5	1.000179
18000.0	531.4	-3.0	-5.3	89.4	685.4	640.3	322.0	2.5	1.000174
18500.0	521.3	-4.8	-6.6	87.0	675.0	639.0	324.0	4.3	1.000170
19000.0	511.4	-5.3	-8.5	77.7	663.4	638.4	317.3	5.2	1.000165
19500.0	501.6	-5.7	-10.6	60.5	652.0	637.7	311.0	5.9	1.000160
20000.0	491.9	-6.7	-10.9	71.8	641.8	636.6	307.2	5.5	1.000157
20500.0	482.4	-7.7	-11.0	77.5	631.8	635.3	309.6	5.4	1.000155
21000.0	473.1	-8.8	-11.1	83.2	622.1	634.1	320.7	6.0	1.000153
21500.0	463.9	-9.9	-11.5	80.0	612.7	632.7	327.0	7.0	1.000150
22000.0	454.8	-11.2	-12.4	91.0	603.8	631.1	330.8	8.0	1.000148
22500.0	446.0	-9.6	-11.1	88.8	588.2	633.1	341.0	8.6	1.000145
23000.0	437.2	-11.9	-14.0	84.5	581.9	630.2	350.4	9.4	1.000141

STATION ALTITUDE 3912.75 F. LT MSL  
 3 AUG. 83 1004 MDT  
 ASCLNSION NO. 44

UPPER AIR DATA  
 2150290044  
 EAST-28/CHERRY  
 TABLE 14 Cont'd

GEODEIC COORDINATES  
 32.89927 LAT DEG  
 136.40591 LON DEG

GEOMETRIC ALTITUDE MSL FEET	PRESSURE MILLIBARS	TEMPERATURE AIR DEGREES DEWPOINT CENTIGRADE	REL. HUM. PERCENT	DENSITY GM/CUBIC METER	SPEED OF SOUND KNOTS	WIND DATA DIRECTION DEGREES (TH)	SPEED KNOTS	INDEX OF REFRACTION	
23500.0	420.5	-12.9	-15.7	79.4	572.7	629.0	359.4	10.4	1.000138
24000.0	420.1	-13.9	-17.5	74.4	563.7	627.7	14.1	11.5	1.000134
24500.0	411.7	-14.9	-19.3	69.3	554.8	626.4	30.2	13.5	1.000131
25000.0	403.6	-15.9	-21.1	64.3	546.1	625.1	37.2	15.1	1.000128
25500.0	395.6	-16.9	-22.7	60.5	537.3	623.9	41.8	16.3	1.000125
26000.0	387.6	-17.9	-24.1	57.8	528.5	622.7	41.9	14.9	1.000123
26500.0	379.8	-18.8	-25.3	56.2	519.9	621.5	44.3	13.9	1.000120
27000.0	372.1	-19.8	-26.1	56.8	511.3	620.4	50.2	13.8	1.000118
27500.0	364.6	-21.0	-28.0	52.9	503.3	618.8	52.4	13.9	1.000116
28000.0	357.2	-22.3	-30.4	47.5	495.7	617.2	52.2	14.0	1.000115
28500.0	349.8	-23.4	-32.5	42.7	487.7	615.8	51.3	13.9	1.000111
29000.0	342.6	-24.5	-34.6	38.1	479.8	614.5	50.2	13.8	1.000109
29500.0	335.5	-25.6	-36.8	33.7	472.0	613.1	48.1	13.6	1.000107
30000.0	328.5	-26.8	-38.6	31.3	464.3	611.6	46.3	13.4	1.000105
30500.0	321.6	-28.0	-40.5	28.9	456.8	610.1	45.4	13.6	1.000103
31000.0	314.9	-29.2	-42.3	26.5	449.5	608.6	46.1	13.9	1.000101
31500.0	308.3	-30.4	-44.2	24.1	442.2	607.1	48.1	14.4	1.000099
32000.0	301.8	-31.6	-46.2	21.7	435.1	605.6	48.7	14.8	1.000098
32500.0	295.3	-32.8	-46.8	22.9	428.0	604.0	49.1	15.2	1.000096
33000.0	289.0	-34.0	-46.9	25.5	420.9	602.5	50.1	16.0	1.000094
33500.0	282.7	-35.2	-47.1	28.2	414.0	600.9	50.9	17.0	1.000093
34000.0	276.7	-36.5	-47.4	30.8	407.1	599.4	51.6	18.2	1.000091
34500.0	270.7	-37.7	-47.8	33.5	400.4	597.8	53.0	19.1	1.000090
35000.0	264.8	-38.9	-49.8	30.1**	393.8	596.2	54.5	20.0	1.000088
35500.0	259.0	-40.2	-55.0	18.5**	387.3	594.6	58.5	20.9	1.000086
36000.0	253.3	-41.5	-63.7	6.0**	380.8	593.8	62.2	21.9	1.000085
36500.0	247.6	-42.7			374.4	591.3	63.4	22.7	1.000083
37000.0	242.0	-44.1			368.0	509.7	62.8	23.2	1.000082
37500.0	236.5	-45.4			361.6	588.0	58.9	23.1	1.000081
38000.0	231.1	-46.7			355.4	586.3	56.0	23.7	1.000079
38500.0	225.8	-48.0			349.4	584.6	54.0	24.7	1.000078
39000.0	220.6	-49.3			343.4	582.9	54.4	25.4	1.000076
39500.0	215.6	-50.6			337.5	581.1	55.4	25.9	1.000075
40000.0	210.7	-51.9			331.8	579.4	57.9	25.8	1.000074
40500.0	205.9	-53.2			326.2	577.7	60.8	25.5	1.000073
41000.0	201.2	-54.6			320.6	576.0	61.8	25.9	1.000071
41500.0	196.5	-55.8			314.9	574.4	62.6	26.4	1.000070
42000.0	191.9	-56.9			309.1	572.9	59.3	27.9	1.000069
42500.0	187.3	-58.1			303.4	571.3	56.3	29.5	1.000068
43000.0	182.8	-59.3			297.8	569.7	56.2	30.7	1.000066

\*\* AT LEAST ONE ASSUMED RELATIVE HUMIDITY VALUE WAS USED IN THE INTERPOLATION.

STATION ALTITUDE 5912.75 F LT MSL  
 3 AUG. 83  
 ASCENSION NO. 49 1004 MDT

UPPER AIR DATA  
 2150290044  
 EAST-28/CHERRY  
 TABLE 14 Cont'd

GEOLOGIC COORDINATES  
 32.69927 LAT DEG  
 136.40591 LON DEG

GEOMETRIC ALTITUDE MSL FEET	PRESSURE MILLIBARS	TEMPERATURE		REL. HUM. PERCENT	DENSITY GM/CUBIC METER	SPEED OF SOUND KNOTS	WIND DATA		INDEX OF REFRACTION
		AIR DEGREES CENTIGRADE	DEWPOINT CENTIGRADE				DIRECTION DEGREES (TN)	SPEED KNOTS	
43500.0	170.4	-60.5			292.3	568.1	50.3	31.8	1.000005
44000.0	174.1	-61.7			206.9	566.5	58.9	28.6	1.000064
44500.0	169.4	-61.3			279.5	567.0	62.8	24.7	1.000062
45000.0	165.8	-60.6			271.9	567.9	69.8	20.0	1.000061
45500.0	161.8	-60.3			264.9	568.3	81.3	15.5	1.000059
46000.0	157.9	-61.4			259.0	567.0	90.9	14.9	1.000058
46500.0	154.1	-62.4			254.7	565.6	99.4	15.1	1.000057
47000.0	150.4	-63.4			249.7	564.2	101.6	13.7	1.000056
47500.0	146.7	-64.7			245.1	562.4	103.1	12.2	1.000055
48000.0	143.0	-66.1			240.7	560.6	99.7	9.9	1.000054
48500.0	139.5	-67.5			236.3	558.7	91.1	7.5	1.000053
49000.0	136.1	-68.8			232.0	556.9	83.5	7.2	1.000052
49500.0	132.6	-69.8			227.2	555.6	82.4	8.8	1.000051
50000.0	129.3	-70.5			222.3	554.6	80.7	10.4	1.000050
50500.0	126.0	-71.2			217.4	553.6	77.0	12.2	1.000048
51000.0	122.8	-72.0			212.7	552.6	72.8	14.0	1.000047
51500.0	119.7	-72.7			208.1	551.6	64.7	16.1	1.000046
52000.0	116.7	-71.9			201.9	552.7	63.7	18.2	1.000045
52500.0	113.7	-69.9			194.9	555.4	69.7	20.0	1.000043
53000.0	110.9	-69.0			190.0	555.5	74.7	21.7	1.000042
53500.0	108.1	-69.8			185.2	555.5	79.2	23.3	1.000041
54000.0	105.4	-69.8			180.5	555.6	82.8	24.6	1.000040
54500.0	102.7	-69.7			175.9	555.6	85.0	24.5	1.000039
55000.0	100.2	-69.7			171.5	555.7	87.3	24.5	1.000038
55500.0	97.7	-69.1			166.7	556.4	95.6	21.5	1.000037
56000.0	95.2	-68.6			162.1	557.2	100.2	19.1	1.000036
56500.0	92.8	-68.0			157.6	558.1	113.1	16.6	1.000035
57000.0	90.5	-67.5			153.4	558.7	120.0	14.1	1.000034
57500.0	88.3	-67.1			149.3	559.2	123.1	12.5	1.000033
58000.0	86.1	-66.7			145.3	559.8	116.6	12.1	1.000032
58500.0	84.0	-66.3			141.4	560.3	109.8	11.9	1.000031
59000.0	81.9	-65.9			137.6	560.9	101.1	13.7	1.000031
59500.0	79.9	-65.5			134.0	561.4	94.5	15.7	1.000030
60000.0	77.9	-64.6			130.2	562.6	90.2	17.5	1.000029
60500.0	76.0	-63.7			126.4	563.9	87.2	19.3	1.000028
61000.0	74.2	-62.7			122.8	565.1	85.1	21.1	1.000027
61500.0	72.4	-61.8			119.3	566.4	89.1	22.7	1.000027
62000.0	70.6	-60.8			115.9	567.6	92.6	24.5	1.000026
62500.0	68.9	-60.3			112.0	568.4	95.5	25.2	1.000025
63000.0	67.3	-60.0			109.9	568.8	98.3	25.2	1.000024

STATION ALTITUDE 3912.75 F (T MSL)  
 3 AUG. 83 1004 MDT  
 ASCENSION NO. 44

UPPER AIR DATA  
 2150290044  
 EAST-28/CHERRY  
 TABLE 14 Cont'd

GEOCLTIC COORDINATES  
 32.89927 LAT DEG  
 136.40591 LON DEG

GEOMETRIC ALTITUDE MSL FEET	PRESSURE MILLIBARS	TEMPERATURE		REL. HUM. PERCENT	DENSITY GM/CUBIC METER	SPEED OF SOUND KNOTS	WIND DATA		INDEX OF REFRACTION
		AIR DEGREES CENTIGRADE	DEWPOINT CENTIGRADE				DIRECTION DEGRS(TW)	SPEED KNOTS	
63500.0	65.7	-59.7			107.2	569.2	101.2	25.2	1.000024
64000.0	64.1	-59.6			104.6	569.3	101.4	24.8	1.000023
64500.0	62.6	-59.7			102.1	569.2	101.5	24.4	1.000023
65000.0	61.1	-59.8			99.7	569.1	101.6	24.1	1.000022
65500.0	59.6	-59.7			97.3	569.1	101.8	23.7	1.000022
66000.0	58.2	-59.3			94.8	569.7	101.9	23.4	1.000021
66500.0	56.8	-58.9			92.3	570.3	102.6	22.7	1.000021
67000.0	55.5	-58.4			90.0	570.9	103.3	22.1	1.000020
67500.0	54.1	-58.0			87.6	571.5	105.1	20.6	1.000020
68000.0	52.9	-57.5			85.4	572.1	107.6	18.9	1.000019
68500.0	51.6	-57.1			83.2	572.7	110.7	17.6	1.000019
69000.0	50.4	-56.6			81.0	573.2	114.1	17.5	1.000018
69500.0	49.2	-56.4			79.1	573.6	117.5	17.5	1.000018
70000.0	48.0	-56.3			77.1	573.8	118.2	18.0	1.000017
70500.0	46.9	-56.1			75.3	573.9	117.1	18.8	1.000017
71000.0	45.8	-56.0			73.5	574.1	116.0	19.7	1.000016
71500.0	44.7	-55.8			71.7	574.3	112.8	19.1	1.000016
72000.0	43.7	-55.7			70.0	574.5	109.1	18.4	1.000016
72500.0	42.7	-55.5			68.3	574.7			1.000015
73000.0	41.7	-55.4			66.6	574.9			1.000015
73500.0	40.7	-55.2			65.0	575.1			1.000014
74000.0	39.7	-55.1			63.4	575.3			1.000014

STATION ALTITUDE 3212.75 F. FT MSL  
 3 AUG. 63 1004 MDT  
 ASCENSION NO. 44

MANDATORY LEVELS  
 2150290044  
 EAST-28/CHERRY  
 TABLE 15

GEODEIC COORDINATES  
 32.89927 LAT DEG  
 136.40591 LON DEG

PRESSURE GEOPOTENTIAL		TEMPERATURE		REL. HUM.	WIND DATA	
MILLIBARS	FLET	AIR	(DEWPOINT)	PERCENT	DIRECTION	SPEED
		DEGREES	CENTIGRADE		(DEGREES TN)	KNOTS
859.0	5166.	23.7	12.0	48.	105.8	1.3
800.0	6895.	20.2	9.0	49.	173.0	3.0
750.0	8712.	16.2	6.1	51.	198.6	5.9
700.0	10623.	11.3	4.5	63.	269.3	2.9
650.0	12643.	7.1	3.8	70.	2.1	4.9
600.0	14700.	2.4	1.4	93.	209.7	.5
550.0	17084.	-2.1	-3.0	94.	15.2	2.3
500.0	19554.	-5.8	-10.9	67.	310.5	5.9
450.0	22237.	-10.9	-12.0	91.	330.2	0.3
400.0	25102.	-16.4	-21.9	62.	39.5	15.7
350.0	28437.	-23.4	-32.4	43.	51.4	13.9
300.0	32076.	-31.9	-46.8	21.	46.8	14.9
250.0	36213.	-42.2			62.9	22.4
200.0	41029.	-54.9			62.0	20.0
175.0	43788.	-61.5			50.1	29.5
150.0	46924.	-63.5			101.6	13.7
125.0	50517.	-71.5			77.2	12.7
100.0	54860.	-69.7			87.4	24.5
80.0	59272.	-65.5			95.2	15.4
70.0	61968.	-60.5			93.5	25.0
60.0	65128.	-59.8			101.7	23.9
50.0	68895.	-56.5			114.9	17.5
40.0	73555.	-55.1				

\*\* AT LEAST ONE ASSUMED RELATIVE HUMIDITY VALUE WAS USED IN THE INTERPOLATION.

END

DATE  
FILMED

10-83

DTI

