

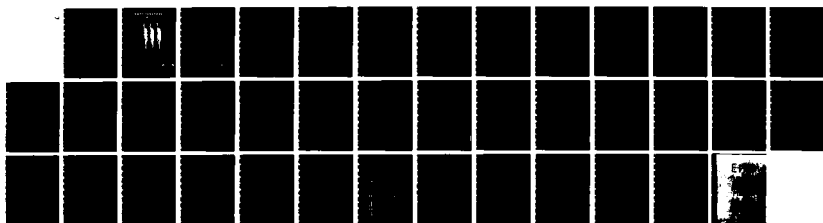
AD-A141 367

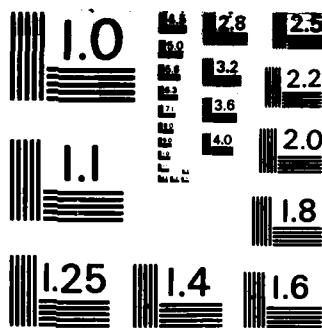
ARMY PERSONNEL COMPOSITE AS OF 30 NOVEMBER 1974 SAMPLE
SURVEY OF MILITARY (U) ARMY MILITARY PERSONNEL CENTER
ALEXANDRIA VA PERSONNEL MANAGE... 1974 DAPC-PWP-3-75-5
SBI-AD-E750 819 F/G 5/9

1/1

UNCLASSIFIED

NL





MICROCOPY RESOLUTION TEST CHART
NATIONAL BUREAU OF STANDARDS-1963-A

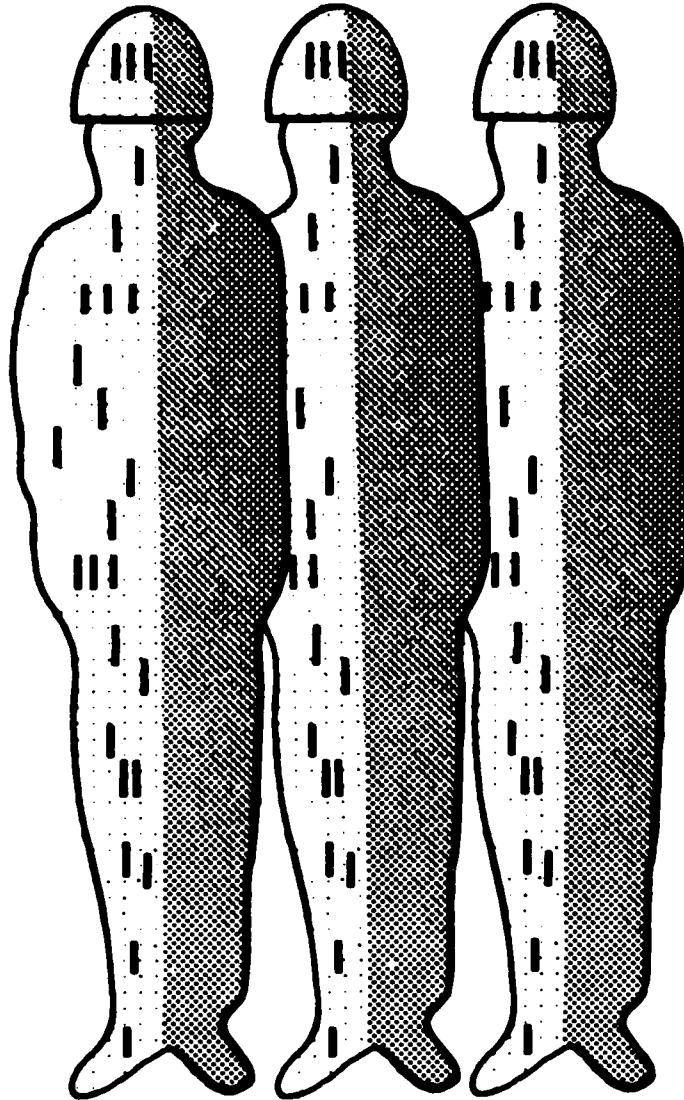
AD-E750819
last copy 1

ARMY PERSONNEL COMPOSITE

only

As of 30 NOVEMBER 1974

AD-A141 367



DTIC FILE COPY

Sample Survey of Military Personnel
RCS MILPC 3

DAPC-PMP Report No. 3-75-s

DTIC
ELECTE
MAY 2 1 1984
S D

Prepared by: US Army Military Personnel Center
Personnel Management Development Directorate
HQ DA (DAPC-PMP-S) Hoffman I Building
Eisenhower Ave. Alexandria, Virginia 22331 (Autovon 221-9680)

E

This document has been approved
for public release and sale; its
distribution is unlimited.

84 05 21 089

Purpose

In recent years, the United States Army has undergone major changes in its selection of personnel. The Modern Volunteer Army Concept has been successful in providing the manpower needed to field an Army but numerous questions have been asked about the population characteristics of the United States Army as of 30 November 1974. Data is also provided for demographic indicators from the 1972 and 1973 Army Personnel Composites. Individuals who desire a more detailed report on 1972 and 1973 data should consult DAPC-PMP Report No. 29-73-E, Army Personnel Composite as of 30 November 1972 and DAPC-PMP Report No. 4-74-S Army Personnel Composite as of 30 November 1973.

Method

The Army Sample Survey is a multipurpose instrument administered worldwide on a quarterly basis. The major portion of the data in this report was collected as part of the 30 November 1974 Army Sample Survey. Statistics from any other sources besides the 30 November 1974 Army Sample Survey are noted on the particular tables.

Sample Population

The sample population for the November 1974 survey consisted of a randomly selected group of officer and enlisted personnel, both male and female. Data from the November 1972 survey was obtained from a random sample of male officer and enlisted personnel while data from the November 1973 survey was obtained from separate random samples of male personnel and female personnel. Five percent of the enlisted personnel and ten percent of the officer personnel were chosen using the terminal digits of their social security numbers.

Reliability

This report has a reliability of 95% + 5%. This means that it is reasonably sure (95% confidence level) that if a large number of samples were drawn from the same population, 95% of the ranges (confidence intervals) would include the population value.

Comments or Information Request

Comments on this report or requests for other reports cited within should be forwarded to:

HQDA (DAPC-PMP-S)
HOFFMAN I BUILDING
2461 EISENHOWER AVENUE
ALEXANDRIA, VA 22331



Accession For	
NTIS GRA&I	<input checked="" type="checkbox"/>
DTIC TAB	<input type="checkbox"/>
Unannounced	<input type="checkbox"/>
Justification	<i>[Signature]</i>
By _____	
Distribution/ _____	
Availability Codes	
Dist	Avail and/or Special
A-1	

INDEX OF TABLES

Page No

PART I

BACKGROUND OF ARMY PERSONNEL..... 1

SECTION I COMMUNITY AND FAMILY INFLUENCE ON ARMY PERSONNEL..... 1

TABLE A YEARLY INCOME OF FAMILY IN WHICH PERSONNEL GREW UP AT TIME OF ENTRY INTO THE ARMY, OFFICERS (MALE/FEMALE) BY GRADE, FEBRUARY 1975..... 2

TABLE B YEARLY INCOME OF FAMILY IN WHICH PERSONNEL GREW UP AT TIME OF ENTRY INTO ARMY, OFFICERS, 1972-1973, 1975..... 2

TABLE C YEARLY INCOME OF FAMILY IN WHICH PERSONNEL GREW UP AT TIME OF ENTRY INTO THE ARMY, ENLISTED PERSONNEL (MALE/FEMALE) BY GRADE, FEBRUARY 1975..... 3

TABLE D YEARLY INCOME OF FAMILY IN WHICH PERSONNEL GREW UP AT TIME OF ENTRY INTO THE ARMY, ENLISTED PERSONNEL, 1972-1973, 1975..... 3

TABLE E TYPE OF COMMUNITY IN WHICH MOST OF LIFE WAS SPENT, OFFICERS (MALE/FEMALE) BY GRADE, NOVEMBER 1974..... 4

TABLE F TYPE OF COMMUNITY IN WHICH MOST OF LIFE WAS SPENT, OFFICERS, 1972-1974..... 4

TABLE G TYPE OF COMMUNITY IN WHICH MOST OF LIFE WAS SPENT, ENLISTED PERSONNEL (MALE/FEMALE) BY GRADE, NOVEMBER 1974..... 5

TABLE H TYPE OF COMMUNITY IN WHICH MOST OF LIFE WAS SPENT, ENLISTED PERSONNEL, 1972-1974..... 5

TABLE I FAMILY MEMBER HAD PREVIOUS MILITARY SERVICE OFFICERS, (MALE/FEMALE) BY GRADE, NOVEMBER 1974..... 6

TABLE J FAMILY MEMBER HAD PREVIOUS MILITARY SERVICE, OFFICERS, 1972-1974..... 6

TABLE K FAMILY MEMBER HAD PREVIOUS MILITARY SERVICE, ENLISTED PERSONNEL (MALE/FEMALE) BY GRADE, NOVEMBER 1974..... 7

TABLE L FAMILY MEMBER HAD PREVIOUS MILITARY SERVICE, ENLISTED PERSONNEL, 1972-1974..... 7

PART II

DEMOGRAPHIC CHARACTERISTICS OF ARMY PERSONNEL..... 8

SECTION I AGE AND ACTIVE FEDERAL MILITARY SERVICE (AFMS) OF ARMY PERSONNEL..... 8

TABLE A AGE OF ARMY PERSONNEL, OFFICERS (MALE/FEMALE) BY GRADE, NOVEMBER 1974.. 9

TABLE B MEDIAN AGE 1972-1974, OFFICERS BY GRADE..... 10

TABLE C AGE OF ARMY PERSONNEL, ENLISTED PERSONNEL (MALE/FEMALE) BY GRADE, NOVEMBER 1974..... 11

TABLE D MEDIAN AGE 1972-1974, ENLISTED PERSONNEL BY GRADE..... 12

TABLE E ACTIVE FEDERAL MILITARY SERVICE (AFMS) OF ARMY PERSONNEL, OFFICERS (MALE/FEMALE) BY GRADE, NOVEMBER 1974..... 13

TABLE F MEDIAN ACTIVE FEDERAL MILITARY SERVICE (AFMS) 1972-1974, OFFICERS BY GRADE..... 14

TABLE G ACTIVE FEDERAL MILITARY SERVICE (AFMS) OF ARMY PERSONNEL, ENLISTED PERSONNEL (MALE/FEMALE) BY GRADE, NOVEMBER 1974..... 15

TABLE H MEDIAN ACTIVE FEDERAL MILITARY SERVICE (AFMS) 1972-1974, ENLISTED PERSONNEL BY GRADE..... 16

INDEX OF TABLES

	Page No
SECTION II <u>MARITAL STATUS OF ARMY PERSONNEL</u>	17
TABLE A MARITAL STATUS, MALE OFFICERS BY GRADE, NOVEMBER 1974.....	17
TABLE B MARITAL STATUS, MALE OFFICERS, 1972-1974.....	17
TABLE C MARITAL STATUS, ENLISTED MEN BY GRADE, NOVEMBER 1974.....	18
TABLE D MARITAL STATUS, ENLISTED MEN, 1972-1974.....	18
TABLE E MARRIED TO MEMBER OF ARMED SERVICE, MARRIED OFFICERS (MALE/FEMALE) BY GRADE, NOVEMBER 1974.....	19
TABLE F MARRIED TO MEMBER OF ARMED SERVICE, MARRIED ENLISTED PERSONNEL (MALE/FEMALE) BY GRADE, NOVEMBER 1974.....	19
SECTION III <u>PHYSICAL CHARACTERISTICS OF ARMY PERSONNEL</u>	20
TABLE A HEIGHT, MALE OFFICERS BY GRADE, NOVEMBER 1974.....	20
TABLE B WEIGHT, MALE OFFICERS BY GRADE, NOVEMBER 1974.....	21
TABLE C HEIGHT AND WEIGHT, FEMALE OFFICERS, NOVEMBER 1974.....	22
TABLE D HEIGHT, ENLISTED MEN BY GRADE, NOVEMBER 1974.....	23
TABLE E WEIGHT, ENLISTED MEN BY GRADE, NOVEMBER 1974.....	24
TABLE F HEIGHT AND WEIGHT, ENLISTED WOMEN, NOVEMBER 1974.....	25
SECTION IV <u>RACIAL COMPOSITION OF ARMY PERSONNEL</u>	26
TABLE A RACE, OFFICERS (MALE AND FEMALE) BY GRADE, NOVEMBER 1974.....	26
TABLE B RACE, OFFICERS, 1972-1974.....	26
TABLE C RACE, ENLISTED PERSONNEL (MALE AND FEMALE) BY GRADE, NOVEMBER 1974.....	27
TABLE D RACE, ENLISTED PERSONNEL, 1972-1974.....	27
SECTION V <u>EDUCATIONAL LEVEL OF ENLISTED PERSONNEL</u>	28
TABLE A EDUCATIONAL LEVEL, ENLISTED MEN BY GRADE, NOVEMBER 1974.....	28
TABLE B EDUCATIONAL GROUP, ENLISTED MEN BY GRADE, 1972-1974.....	29
TABLE C EDUCATIONAL LEVEL, ENLISTED WOMEN, 1973-1974.....	30
SECTION VI <u>RELIGIOUS PREFERENCE OF ARMY PERSONNEL</u>	31
TABLE A RELIGIOUS PREFERENCE, OFFICERS (MALE AND FEMALE) BY GRADE, NOVEMBER 1974.....	31
TABLE B RELIGIOUS PREFERENCE, OFFICERS 1972 AND 1974.....	32
TABLE C RELIGIOUS PREFERENCE, ENLISTED PERSONNEL (MALE AND FEMALE) BY GRADE, NOVEMBER 1974.....	33
TABLE D RELIGIOUS PREFERENCE, ENLISTED PERSONNEL, 1972 AND 1974.....	34

PART I
BACKGROUND OF ARMY PERSONNEL

SECTION I
COMMUNITY AND FAMILY INFLUENCE ON ARMY PERSONNEL

TABLE A
 YEARLY INCOME OF FAMILY IN WHICH PERSONNEL GREW UP AT
 TIME OF ENTRY INTO THE ARMY, OFFICERS (MALE/FEMALE)
 BY GRADE, FEBRUARY 1975

Yearly Income of Family In Which Personnel Grew Up at Time of Entry into Army	Grade									
	COM OFF	COL	LTC	MAJ	CPT	1LT	2LT	WO	Total	COM OFF
\$5000 yearly or less	10.9	24.7	15.3	12.0	9.4	6.0	9.2	20.1	11.7	10.9
\$5000 to \$10,000 yearly	34.3	38.4	42.2	39.7	33.9	27.0	25.6	42.1	35.0	34.3
\$10,000 to \$15,000 yearly	26.8	19.7	24.3	22.2	28.8	32.4	27.1	23.1	26.5	26.8
\$15,000 to \$20,000 yearly	14.9	8.6	10.6	14.1	14.9	17.7	19.9	7.1	14.2	14.9
Over \$20,000 yearly	13.1	8.6	7.6	12.0	13.0	16.9	18.2	7.6	12.6	13.1
Total	100.0%	100.0%	100.0%	100.0%	100.0%	100.0%	100.0%	100.0%	100.0%	100.0%

TABLE B
 YEARLY INCOME OF FAMILY IN WHICH PERSONNEL GREW UP AT
 TIME OF ENTRY INTO ARMY, OFFICERS, 1972-1973, 1975*

Yearly Income of Family In Which Personnel Grew Up at Time of Entry into Army	NOVEMBER 1972		NOVEMBER 1973		FEBRUARY 1975	
	MALE	FEMALE	MALE	FEMALE	MALE/FEMALE	MALE/FEMALE
\$5000 yearly or less	20.0	17.3	15.4	11.7	11.7	11.7
\$5000 to \$10,000 yearly	38.4	34.7	31.9	35.0	35.0	35.0
\$10,000 to \$15,000 yearly	22.6	24.8	27.8	26.5	26.5	26.5
\$15,000 to \$20,000 yearly	10.3	12.0	13.4	14.2	14.2	14.2
Over \$20,000 yearly	8.7	11.2	11.5	12.6	12.6	12.6
Total	100.0%	100.0%	100.0%	100.0%	100.0%	100.0%

* Adjustments in dollar values between the present and past have not been made.

TABLE C
 YEARLY INCOME OF FAMILY IN WHICH PERSONNEL GREW UP AT
 TIME OF ENTRY INTO THE ARMY, ENLISTED PERSONNEL
 (MALE/FEMALE) BY GRADE, FEBRUARY 1975

Yearly Income of Family In Which Personnel Grew Up at Time of Entry into Army	Total	Grade								
		SGM	MSG MSG	SFC SP7	SSG SP6	SGT SP5	CPL SP4	PFC	PV2	PV1
\$5000 yearly or less	25.4	51.3	44.7	39.6	31.8	22.1	21.3	22.4	23.8	22.6
\$5000 to \$10,000 yearly	35.1	30.5	39.4	40.3	41.5	40.3	33.1	29.4	32.4	31.7
\$10,000 to \$15,000 yearly	22.8	8.6	11.0	12.9	16.9	22.0	26.1	27.0	24.3	26.3
\$15,000 to \$20,000 yearly	10.6	6.7	2.8	4.6	6.5	9.9	12.2	12.3	12.2	14.1
Over \$20,000 yearly	6.1	2.9	2.1	2.6	3.3	5.7	7.3	8.9	7.3	5.3
Total	100.0%	100.0%	100.0%	100.0%	100.0%	100.0%	100.0%	100.0%	100.0%	100.0%

TABLE D
 YEARLY INCOME OF FAMILY IN WHICH PERSONNEL GREW UP AT
 TIME OF ENTRY INTO THE ARMY, ENLISTED PERSONNEL,
 1972-1973, 1975*

Yearly Income of Family In Which Personnel Grew Up at Time of Entry into Army	NOVEMBER 1972		NOVEMBER 1973		FEBRUARY 1975	
	MALE	FEMALE	MALE	FEMALE	MALE/FEMALE	MALE/FEMALE
\$5000 yearly or less	31.3	21.3	28.0	21.3	25.4	25.4
\$5000 to \$10,000 yearly	37.5	32.6	34.3	32.6	35.1	35.1
\$10,000 to \$15,000 yearly	19.2	26.5	21.4	26.5	22.8	22.8
\$15,000 to \$20,000 yearly	7.4	12.8	9.6	12.8	10.6	10.6
Over \$20,000 yearly	4.6	6.8	6.7	6.8	6.1	6.1
Total	100.0%	100.0%	100.0%	100.0%	100.0%	100.0%

* Adjustments in dollar values between the present and past have not been made.

TABLE G
 TYPE OF COMMUNITY IN WHICH MOST OF LIFE WAS SPENT,
 ENLISTED PERSONNEL (MALE/FEMALE) BY GRADE,
 NOVEMBER 1974

Type of Community in Which Most of Life was Spent	Grade									
	Total	SGM	MSG MSG	SFC SP7	SSG SP6	SGT SP5	CPL SP4	PFC	PV2	PV1
Rural, small town, or village (under 500 population)	18.5	-	24.8	28.5	23.2	19.1	17.3	13.5	15.6	16.2
Town (500 to 25,000 population)	31.8	-	37.6	34.0	29.2	36.1	29.6	32.5	31.8	30.4
Suburb or small city (25,000 to 100,000 population)	27.4	-	17.4	20.8	26.6	24.9	30.4	27.4	28.0	31.8
Large city (over 100,000 population)	22.3	-	20.2	16.7	21.0	19.9	22.7	26.6	24.6	21.6
Total	100.0%	100.0%	100.0%	100.0%	100.0%	100.0%	100.0%	100.0%	100.0%	100.0%

* Sample size too small for reliability. No data shown for sample size less than 50.

TABLE H
 TYPE OF COMMUNITY IN WHICH MOST OF LIFE WAS SPENT,
 ENLISTED PERSONNEL, 1972-1974

Type of Community in Which Most of Life was Spent	NOVEMBER 1972		NOVEMBER 1973		NOVEMBER 1974	
	MALE	FEMALE	MALE	FEMALE	MALE	FEMALE
Rural, small town, or village (under 500 population)	18.1	17.4	20.1	17.4	18.5	18.5
Town (500 to 25,000 population)	32.9	32.4	31.4	32.4	31.8	31.8
Suburb or small city (25,000 to 100,000 population)	25.4	26.9	24.7	26.9	27.4	27.4
Large city (over 100,000 population)	23.6	23.3	23.8	23.3	22.3	22.3
Total	100.0%	100.0%	100.0%	100.0%	100.0%	100.0%

TABLE I
 FAMILY MEMBER HAD PREVIOUS MILITARY SERVICE,
 OFFICERS (MALE/FEMALE) BY GRADE,
 NOVEMBER 1974

Family Member had Previous Military Service	Total	Grade							
		COM OFF	COL	LTC	MAJ	CPT	1LT	2LT	WO
No	31.7	31.9	40.3	47.2	44.1	29.5	18.2	15.6	29.4
Yes, Army only	34.6	35.1	33.5	23.0	31.2	36.3	41.2	43.6	30.0
Yes, in either Navy, Marine, Air Force, or Coast Guard only	18.0	17.9	10.6	15.5	10.9	20.1	23.6	22.0	19.1
Yes, in both Army and other service	15.7	15.1	15.6	14.3	13.8	14.1	17.0	18.8	21.5
Total	100.0%	100.0%	100.0%	100.0%	100.0%	100.0%	100.0%	100.0%	100.0%

TABLE J
 FAMILY MEMBER HAD PREVIOUS MILITARY SERVICE,
 OFFICERS, 1972 - 1974

Family Member had Previous Military Service	NOVEMBER 1972 MALE	NOVEMBER 1973 MALE	NOVEMBER 1974 MALE/FEMALE
Yes, Army only	33.0	34.2	34.6
Yes, in either Navy, Marine, Air Force, or Coast Guard only	18.8	16.7	18.0
Yes, in both Army and other service	16.8	15.4	15.7
Total	100.0%	100.0%	100.0%

TABLE K
 FAMILY MEMBER HAD PREVIOUS MILITARY SERVICE,
 ENLISTED PERSONNEL (MALE/FEMALE)
 BY GRADE, NOVEMBER 1974

Family Member had Previous Military Service	Total	Grade											
		SGM	MSG 1SG	SFC SP7	SSG SP6	SGT SP5	CPL SP4	PFC	PV2	PV1			
No	25.3	-	38.5	32.2	24.0	23.9	24.0	24.5	25.6	23.0			
Yes, Army only	32.6	-	29.4	29.1	33.0	31.0	33.9	35.4	31.9	27.7			
Yes, in either Navy, Marine, Air Force, or Coast Guard only	21.0	-	15.6	15.1	18.7	23.1	22.4	19.2	21.7	31.7			
Yes, in both Army and other service	21.1	-	16.5	23.6	24.3	22.0	19.7	20.9	20.8	17.6			
Total	100.0%	100.0%*100.0%	100.0%	100.0%	100.0%	100.0%	100.0%	100.0%	100.0%	100.0%	100.0%	100.0%	100.0%

* Sample size too small for reliability. No data shown for sample size less than 50.

TABLE L
 FAMILY MEMBER HAD PREVIOUS MILITARY SERVICE,
 ENLISTED PERSONNEL, 1972-1974

Family Member had Previous Military Service	NOVEMBER 1972		NOVEMBER 1973		NOVEMBER 1974	
	MALE	FEMALE	MALE	FEMALE	MALE/FEMALE	FEMALE
No	21.0		25.7		25.3	
Yes, Army only	32.0		32.4		32.6	
Yes, in either Navy, Marine, Air Force, or Coast Guard only	22.0		20.3		21.0	
Yes, in both Army and other service	25.0		21.6		21.1	
Total	100.0%		100.0%		100.0%	

PART II
DEMOGRAPHIC CHARACTERISTICS OF ARMY PERSONNEL

SECTION I
AGE AND ACTIVE FEDERAL MILITARY SERVICE (AFMS)
OF ARMY PERSONNEL

TABLE A
AGE OF ARMY PERSONNEL, OFFICERS (MALE/FEMALE) BY GRADE,
NOVEMBER 1974

Age	Total	Grade											
		COM OFF	COL	LTC	MAJ	CPT	1LT	2LT	WO				
17	—	—	—	—	—	—	—	—	—	—	—	—	—
18	—	—	—	—	—	—	—	—	—	—	—	—	—
19	—	—	—	—	—	—	—	—	—	—	—	—	—
20	—	—	—	—	—	—	—	—	—	—	—	—	—
21	.2	.1	—	—	—	—	—	—	—	—	1.3	—	—
22	1.2	1.1	—	—	—	—	—	—	—	1.7	7.4	2.1	—
23	4.5	4.7	—	—	—	—	—	—	—	5.5	31.7	2.8	—
24	6.4	6.8	—	—	—	—	—	—	—	23.6	26.5	1.7	—
25	6.8	7.1	—	—	—	—	—	—	—	32.3	14.0	4.1	—
26	6.6	6.7	—	—	—	—	—	—	—	19.9	7.9	3.8	—
27	6.9	6.8	—	—	—	—	—	—	—	7.8	5.0	4.8	—
28	5.4	5.6	—	—	—	—	—	—	—	13.1	.8	3.8	—
29	4.5	4.8	—	—	—	—	—	—	—	10.9	2.1	1.4	—
30	4.7	4.8	—	—	—	—	—	—	—	11.3	1.1	3.5	—
31	5.2	5.3	—	—	—	—	—	—	—	10.9	1.9	5.2	—
32	4.3	4.6	—	—	—	—	—	—	—	8.1	.5	1.7	—
33	4.3	4.4	—	—	1.0	—	—	—	—	5.9	1.1	4.2	—
34	4.1	4.1	—	—	.5	—	—	—	—	3.3	.3	5.5	—
35	3.8	3.9	—	—	.5	—	—	—	—	3.7	—	3.5	—
36	4.3	4.0	—	—	1.6	—	—	—	—	3.7	—	6.6	—
37	3.5	2.9	—	—	3.7	—	—	—	—	1.7	—	9.0	—
38	3.1	2.7	—	—	9.0	—	—	—	—	1.1	—	7.9	—
39	3.3	2.9	1.4	—	11.1	—	—	—	—	1.1	—	6.9	—
40-41	5.1	4.9	6.1	—	24.3	—	—	—	—	.9	—	8.3	—
42-43	4.5	4.6	14.1	—	24.9	—	—	—	—	.2	—	4.2	—
44-45	3.5	3.4	24.8	—	13.8	—	—	—	—	.2	—	4.8	—
46-47	.9	.8	8.7	—	3.2	—	—	—	—	.1	—	1.7	—
48-49	1.0	.9	12.8	—	2.4	—	—	—	—	—	—	1.0	—
50-51	.8	.8	14.1	—	1.3	—	—	—	—	—	—	.4	—
52-53	.4	.6	6.7	—	1.1	—	—	—	—	—	—	.4	—
54-55	.5	.5	7.3	—	1.1	—	—	—	—	—	—	.4	—
56-57	.1	.1	2.0	—	.5	—	—	—	—	—	—	—	—
58-59	.1	.1	2.0	—	—	—	—	—	—	—	—	—	—
60 and over	—	—	—	—	—	—	—	—	—	—	—	—	—
Total	100.0%	100.0%	100.0%	100.0%	100.0%	100.0%	100.0%	100.0%	100.0%	100.0%	100.0%	100.0%	100.0%

TABLE B
 MEDIAN AGE 1972-1974, OFFICERS BY GRADE

<u>Median Age By Year</u>	<u>Total</u>	<u>Grade</u>							
		<u>COM</u>	<u>OFF</u>	<u>COL</u>	<u>LTC</u>	<u>MAJ</u>	<u>CPT</u>	<u>1LT</u>	<u>2LT</u>
NOV 1972 (Males)	30.6	29.8	49.4	40.5	34.3	28.7	24.2	23.9	36.1
NOV 1973 (Males)	31.1	30.5	—*	41.0	35.6	29.7	25.8	24.1	35.8
NOV 1974 (Males/Females)	31.5	31.3	46.8	41.9	36.5	30.2	25.6	24.4	36.2

— * Sample size too small for reliability. No data shown for sample size less than 50.

TABLE D
 MEDIAN AGE 1972-1974, ENLISTED PERSONNEL BY GRADE

Median Age By Year	Total	Grade								
		SGM	MSG MSG	SFC SP7	SSG SP6	SGT SP5	CPL SP4	PFC	PV2	PV1
NOV 1972 (Male)	22.4	43.8	41.4	37.0	31.3	24.6	21.5	20.4	19.9	19.5
NOV 1973 (Male)	22.1	*	40.3	36.5	31.4	25.3	21.7	21.0	19.8	19.1
NOV 1974 (Male/Female)	22.5	*	39.9	36.3	30.3	25.1	21.6	20.3	19.5	19.6

* Sample size too small for reliability. No data shown for sample size less than 50.

TABLE F
 MEDIAN ACTIVE FEDERAL MILITARY SERVICE (AFMS) 1972-1974,
 OFFICERS BY GRADE

Median AFMS By Year	Total	Grade							
		COM OFF	COL	LTC	MAJ	CPT	1LT	2LT	WO
NOV 1972 (Males)	7.6	6.9	27.1	17.5	12.3	6.2	2.5	1.2	16.6
NOV 1973 (Males)	8.4	7.5	*	18.3	12.4	7.2	3.3	1.4	16.9
NOV 1974 (Males/Females)	8.7	8.3	24.5	18.9	12.9	7.6	3.2	1.7	16.9

* Sample size too small for reliability. No data shown for sample size less than 50.

TABLE G
ACTIVE FEDERAL MILITARY SERVICE (AFMS) OF ARMY PERSONNEL,
ENLISTED PERSONNEL (MALE AND FEMALE) BY GRADE,
NOVEMBER 1974

Active Federal Military Service	Total	Grade									
		SGM	MSG SP7	SFC SP7	SSG SP6	SGT SP5	CPL SP4	PFC	PV2	PV1	
Less than 3 months	3.4	-	-	-	-	-	-	3.1	7.7	38.8	
3 months but less than 6 months	3.7	-	-	-	-	1.0	3.1	16.0	19.3		
6 months but less than 1 year	10.5	-	-	-	1.0	1.9	26.9	38.4	11.3		
1 year	15.3	-	-	-	2.0	23.9	41.0	15.7	12.0		
2 years	21.0	-	-	-	1.0	16.9	17.9	12.5	13.3		
3 years	7.7	-	-	-	.2	15.3	3.9	4.9	3.3		
4 years	4.7	-	-	-	3.4	12.6	6.1	2.1	1.3		
5 years	3.6	-	-	-	6.4	10.8	2.8	1.0	-		
6 years	4.1	-	-	-	9.8	13.8	1.8	1.1	.7		
7 years	2.8	-	-	.2	7.9	8.5	1.2	.2	-		
8 years	2.4	-	-	.5	8.9	6.2	.6	.5	-		
9 years	1.6	-	-	1.0	7.0	3.7	.1	.2	-		
10 years	1.6	-	-	1.4	7.5	2.6	.2	.4	-		
11 years	1.6	-	-	3.6	7.2	2.0	.1	-	-		
12 years	1.5	-	.9	5.3	6.3	1.3	.1	-	-		
13 years	1.5	-	.9	7.2	6.0	.7	.1	-	-		
14 years	1.7	-	-	10.9	4.7	.8	.1	-	-		
15 years	1.6	-	10.1	12.4	4.0	.4	-	-	-		
16 years	1.8	-	6.4	14.2	4.8	.4	-	-	-		
17 years	1.6	-	9.2	8.7	5.0	.3	-	-	-		
18 years	1.7	-	13.8	9.2	4.4	.4	-	-	-		
19 years	1.6	-	13.8	11.4	2.8	.2	-	-	-		
20 years but less than 25	2.2	-	33.9	12.1	2.2	.1	-	-	-		
25 years but less than 30	.7	-	10.1	1.9	.1	-	-	-	-		
30 years or more	.1	-	.9	-	-	-	-	-	-		
Total	100.0%	100.0%*	100.0%	100.0%	100.0%	100.0%	100.0%	100.0%	100.0%	100.0%	

* Sample size too small for reliability. No data shown for sample size less than 50.

TABLE H
 MEDIAN ACTIVE FEDERAL MILITARY SERVICE (AFMS) 1972-1974,
 ENLISTED PERSONNEL BY GRADE

Median AFMS By Year	Total	Grade									
		SGM	MSG MSG	SFC SP7	SSG SP6	SGT SP5	CPL SP4	PFC	PV2	PV1	
NOV 1972 (Male)	2.5	25.2	21.0	16.9	11.7	4.6	1.9	1.1	.6	.3	
NOV 1973 (Male)	2.6	*	21.5	17.2	11.8	5.6	2.4	1.5	.7	.4	
NOV 1974 (Male /Female)	2.8	*	19.6	16.5	10.7	5.2	2.5	1.4	.8	.4	

* Sample size too small for reliability. No data shown for sample size less than 50.

SECTION II
MARITAL STATUS OF ARMY PERSONNEL

TABLE A
MARITAL STATUS, MALE OFFICERS BY GRADE, NOVEMBER 1974

Marital Status	Grade							
	COM OFF	COL	LTC	MAJ	CPT	1LT	2LT	WO
Married	84.9	98.7	95.7	91.4	87.5	72.6	57.5	90.0
Single	15.1	1.3	4.3	8.6	12.5	27.4	42.5	10.0
Total	100.0%	100.0%	100.0%	100.0%	100.0%	100.0%	100.0%	100.0%

TABLE B
MARITAL STATUS, MALE OFFICERS, 1972-1974

Marital Status	NOVEMBER 1972	NOVEMBER 1973	NOVEMBER 1974
	Married	84.5	84.2
Single	15.5	15.8	15.1
Total	100.0%	100.0%	100.0%

TABLE C
MARITAL STATUS, ENLISTED MEN BY GRADE, NOVEMBER 1974

<u>Marital Status</u>	<u>Total</u>	<u>Grade</u>							
		<u>SGM</u>	<u>MSG</u>	<u>SFC</u>	<u>SSG</u>	<u>SGT</u>	<u>CPL</u>	<u>PFC</u>	<u>PV1</u>
		<u>SP4</u>	<u>SP5</u>	<u>SP6</u>	<u>SP7</u>	<u>SP5</u>	<u>SP4</u>	<u>SP4</u>	<u>PV1</u>
Married	53.2	93.4	89.1	85.0	72.4	41.3	30.3	27.8	19.5
Single	46.8	6.6	10.9	15.0	27.6	58.7	69.7	72.2	80.5
Total	100.0%	100.0%	100.0%	100.0%	100.0%	100.0%	100.0%	100.0%	100.0%

TABLE D
MARITAL STATUS, ENLISTED MEN, 1972-1974

<u>Marital Status</u>	<u>NOVEMBER 1972</u>	<u>NOVEMBER 1973</u>	<u>NOVEMBER 1974</u>
			<u>MALE</u>
Married	52.6	50.8	53.2
Single	47.4	49.2	46.8
Total	100.0%	100.0%	100.0%

TABLE E
 MARRIED TO MEMBER OF ARMED SERVICE,
 MARRIED OFFICERS PERSONNEL (MALE/FEMALE) BY GRADE, NOVEMBER 1974

MARRIED TO MEMBER OF The Armed Service	Total	Grade									
		COM OFF	COL	LTC	MAJ	CPT	1LT	2LT	WO		
No, I am not married to a member of an armed service	96.9	96.8	98.2	95.9	97.4	97.1	95.0	96.3	98.4		
Yes, to a member of the Army	2.0	2.1	-	1.9	1.9	2.4	3.0	2.3	.8		
Yes, to a member of another armed service	1.1	1.1	1.8	2.2	.7	.5	2.0	1.4	.8		
Total	100.0%	100.0%	100.0%	100.0%	100.0%	100.0%	100.0%	100.0%	100.0%	100.0%	100.0%

TABLE F
 MARRIED TO MEMBER OF ARMED SERVICE,
 MARRIED ENLISTED PERSONNEL (MALE/FEMALE) BY GRADE, NOVEMBER 1974

MARRIED TO A MEMBER OF The Armed Service	Total	Grade									
		SGM	MSG 1SG	SFC SP7	SSG SP6	SGT SP5	CPL SP4	PFC	PV2	PV1	
No, I am not married to a member of an armed service	93.0	-	97.0	97.6	97.0	95.1	91.9	85.6	85.0	-	
Yes, to a member of the Army	5.6	-	2.0	1.9	2.8	4.4	6.7	10.4	12.0	-	
Yes, to a member of another armed service	1.4	-	1.0	.5	.2	.5	1.4	4.0	3.0	-	
Total	100.0%	100.0%*	100.0%	100.0%	100.0%	100.0%	100.0%	100.0%	100.0%	100.0%	

* Sample size too small for reliability. No data shown for sample size less than 50.

TABLE B
WEIGHT, MALE OFFICERS BY GRADE, NOVEMBER 1974

<u>Weight</u>	<u>Total</u>	<u>Grade</u>									
		<u>COM OFF</u>	<u>COL</u>	<u>LTC</u>	<u>MAJ</u>	<u>CPT</u>	<u>1LT</u>	<u>2LT</u>	<u>WO</u>		
Less than 125 lbs	1.0	1.0	.6	1.3	1.5	.7	.8	1.6	.3		
125 to 149 lbs	9.5	9.6	7.6	5.5	7.6	9.8	11.9	15.0	8.9		
150 to 174 lbs	40.6	40.7	40.2	39.4	39.2	41.3	41.3	41.7	39.3		
175 to 199 lbs	34.9	34.7	36.3	39.7	34.2	34.6	34.4	29.7	37.8		
200 to 224 lbs	11.6	11.6	13.5	11.5	13.7	11.4	9.1	10.8	11.3		
225 to 249 lbs	2.2	2.2	1.8	2.1	3.6	2.1	2.5	.6	2.1		
Over 250 lbs	<u>.2</u>	<u>.2</u>	<u>-.5</u>	<u>.2</u>	<u>.1</u>	<u>-.1</u>	<u>-.6</u>	<u>.3</u>			
Total	100.0%	100.0%	100.0%	100.0%	100.0%	100.0%	100.0%	100.0%	100.0%	100.0%	

TABLE C
 HEIGHT AND WEIGHT, FEMALE OFFICERS,
 NOVEMBER 1974

<u>Height</u>	<u>Total</u>	<u>Weight</u>	<u>Total</u>
Less than 5'	4.7	Less than 100 lbs	6.7
5' to 5'2"	20.8	100 to 124 lbs	31.5
5'3" to 5'5"	23.5	125 to 149 lbs	40.3
5'6" to 5'8"	35.5	150 to 174 lbs	13.4
5'9" to 5'11"	14.8	175 lbs and over	<u>8.1</u>
6' and over	<u>.7</u>	Total	100.0%
Total	100.0%		

TABLE D
HEIGHT, ENLISTED MEN BY GRADE,
NOVEMBER 1974

Height	Total	Grade								
		SGM	MSG MSG	SFC SP7	SSG SP6	SGT SP5	CPL SP4	PFC	PV2	PV1
Less than 5'	.3	-	-	.2	-	.1	.3	.4	.3	1.4
5' to 5'2"	1.6	-	-	.5	.9	1.1	2.0	1.8	2.5	2.8
5'3" to 5'5"	5.4	-	1.9	3.2	4.3	5.0	5.4	7.7	6.3	7.7
5'6" to 5'8"	23.0	-	32.4	25.0	21.4	21.1	22.6	21.8	26.4	23.8
5'9" to 5'11"	39.3	-	37.9	40.3	43.7	41.0	39.2	38.0	35.7	33.5
6' to 6'2"	25.0	-	24.1	26.2	24.2	26.4	25.2	25.7	21.4	25.9
6'3" to 6'5"	4.9	-	2.8	4.6	4.9	5.0	5.0	4.1	6.4	4.2
Over 6'5"	.5	-	.9	-	.6	.3	.3	.5	1.0	.7
	100.0%	100.0%*	100.0%	100.0%	100.0%	100.0%	100.0%	100.0%	100.0%	100.0%

* Sample size too small for reliability. No data shown for sample size less than 50.

TABLE E
WEIGHT, ENLISTED MEN BY GRADE,
NOVEMBER 1974

Weight	Total	Grade											
		SGM	MSG MSG	SFC SP7	SSG SP6	SGT SP5	CPL SP4	PFC	PV2	PV1			
Less than 100 lbs	.5	-	-	.2	-	.1	.5	.5	1.1	1.4			
100 to 124 lbs	2.6	-	.9	.7	1.0	2.3	2.5	3.3	4.8	4.8			
125 to 149 lbs	20.5	-	7.4	12.9	14.8	15.6	21.3	27.8	27.7	29.7			
150 to 174 lbs	38.8	-	37.1	29.6	30.9	37.6	40.5	42.9	45.8	42.0			
175 to 199 lbs	25.9	-	35.2	34.6	33.5	28.6	25.7	19.2	17.5	18.6			
200 to 224 lbs	8.3	-	12.0	15.5	13.6	10.3	7.5	5.0	2.0	2.1			
225 to 249 lbs	2.8	-	7.4	5.3	4.9	4.4	1.6	1.3	1.1	.7			
Over 250 lbs	.6	-	-	1.2	1.3	1.1	.4	-	-	.7			
Total	100.0%	100.0%*	100.0%	100.0%	100.0%	100.0%	100.0%	100.0%	100.0%	100.0%	100.0%	100.0%	100.0%

* Sample size too small for reliability. No data shown for sample size less than 50.

TABLE F
 HEIGHT AND WEIGHT, ENLISTED WOMEN,
 NOVEMBER 1974

<u>Height</u>	<u>Total</u>	<u>Weight</u>	<u>Total</u>
Less than 5'	3.8	Less than 100 lbs	3.5
5' to 5'2"	24.1	100 to 124 lbs	37.7
5'3" to 5'5"	35.7	125 to 149 lbs	44.4
5'6" to 5'8"	29.1	150 to 174 lbs	11.3
5'9" to 5'11"	4.9	175 lbs and over	3.1
6' and over	2.4	Total	100.0%
Total	100.0%		

SECTION IV
RACIAL COMPOSITION OF ARMY PERSONNEL

TABLE A
RACE, OFFICERS (MALE AND FEMALE) BY GRADE,
NOVEMBER 1974

Race	Total	Grade							
		COM OFF	COL	LTC	MAJ	CPT	1LT	2LT	WO
White/Caucasian	91.4	91.6	91.4	90.7	90.4	93.4	91.3	90.2	88.2
Black/Negro	6.1	6.0	5.7	7.0	7.4	4.5	5.3	7.9	7.3
A race not identified above	2.5	2.4	2.9	2.3	2.2	2.1	3.4	1.9	4.5
Total	100.0%	100.0%	100.0%	100.0%	100.0%	100.0%	100.0%	100.0%	100.0%

26

TABLE B
RACE, OFFICERS,
1972-1974

Race	NOVEMBER 1972		NOVEMBER 1973		NOVEMBER 1974	
	MALE	FEMALE	MALE	FEMALE	MALE/FEMALE	MALE/FEMALE
Asian American*	-	-	1.6	3.3	-	-
White/Caucasian	93.7	-	91.0	86.2	91.4	91.4
Black/Negro	4.8	-	5.5	6.5	6.1	6.1
A race not identified above	1.5	-	1.9	4.0	2.5	2.5
Total	100.0%	-	100.0%	100.0%	100.0%	100.0%

* Asian American was a separate response in November 1973 only.

TABLE C
RACE, ENLISTED PERSONNEL (MALE AND FEMALE)
BY GRADE, NOVEMBER 1974

Race	Grade									
	<u>SGM</u>	<u>MSG 1SG</u>	<u>SFC SP7</u>	<u>SSG SP6</u>	<u>SGT SP5</u>	<u>CPL SP4</u>	<u>PFC</u>	<u>PV2</u>	<u>PV1</u>	
White/Caucasian	70.3	84.1	73.6	77.0	77.7	67.9	66.2	61.9	60.8	
Black/Negro	21.6	13.1	23.0	16.7	15.5	22.3	24.3	28.5	28.3	
A race not identified above	8.1	2.8	3.4	6.3	6.8	9.8	9.5	9.6	10.9	
Total	100.0%	100.0%	100.0%	100.0%	100.0%	100.0%	100.0%	100.0%	100.0%	100.0%

* Sample size too small for reliability. No data shown for sample size less than 50.

TABLE D
RACE, ENLISTED PERSONNEL, 1972-1974

Race	<u>NOVEMBER 1972 MALE</u>	<u>NOVEMBER 1973 MALE</u>	<u>NOVEMBER 1973 FEMALE</u>	<u>NOVEMBER 1974 MALE/FEMALE</u>
	Asian American*	-	2.6	1.5
White/Caucasian	78.5	71.8	73.8	70.3
Black/Negro	17.5	17.1	16.3	21.6
A race not identified above	4.0	8.5	8.4	8.1
Total	100.0%	100.0%	100.0%	100.0%

* Asian American was a separate response in November 1973 only.

SECTION V
EDUCATIONAL LEVEL OF ENLISTED PERSONNEL

TABLE A
EDUCATIONAL LEVEL, ENLISTED MEN BY GRADE, NOVEMBER 1974

Educational Level	Total	SGM	Grade										PV1
			MSG MSG	SFC SP7	SSG SP6	SGT SP5	CPL SP4	PFC	PV2				
Less than eighth grade	1.1	-	-	-	.4	.5	1.2	1.3	2.1	4.1			
Eighth grade graduate	1.1	-	-	.2	.3	.5	.9	1.7	2.4	4.1			
One year high school	2.9	-	-	-	.6	1.0	2.7	3.8	8.3	7.6			
Two years high school	3.8	-	.9	.2	.4	1.0	2.9	7.1	10.8	9.0			
(10th grade)	3.8	-	.9	.5	.6	1.3	3.4	6.4	8.8	14.5			
Three years high school	2.9	-	.9	1.0	1.2	1.7	2.8	4.0	6.2	3.4			
(11th grade)	42.5	-	30.8	36.6	35.9	40.0	51.5	44.7	37.4	32.4			
Four years high school	18.9	-	33.9	32.7	28.0	23.5	14.3	12.4	11.3	16.9			
(non-graduate)	10.8	-	13.1	12.4	15.5	14.2	9.0	9.6	6.4	3.7			
High school graduate	5.2	-	8.4	5.9	7.7	6.3	5.6	3.8	2.5	-			
GED credits for high school graduate	.8	-	-	2.2	1.5	.9	.2	.6	.6	.7			
One year college	1.9	-	3.7	2.0	2.5	3.1	1.6	1.5	.7	1.4			
Two years college	1.6	-	3.7	2.7	2.7	1.9	1.1	1.3	.8	1.4			
(no degree)	.4	-	-	.5	.4	.6	.6	.1	.3	.7			
Four years college	1.7	-	1.9	2.4	1.9	3.2	1.8	.8	.3	-			
(non-graduate)	.3	-	-	-	.1	-	.2	.8	.8	.1			
College degree (B.A. or equivalent)	.2	-	.9	.5	.3	.3	.2	.1	.3	.1			
Law degree (LL.B., J.D.)	.1	-	.9	.2	.2	.2	.2	.1	.3	.1			
Master's degree (M.S., M.A.)	.1	-	.9	.2	.2	.2	.2	.1	.3	.1			
Doctor's degree (PhD, MD)	.1	-	.9	.2	.2	.2	.2	.1	.3	.1			
Total	100.0%	100.0%*	100.0%	100.0%	100.0%	100.0%	100.0%	100.0%	100.0%	100.0%	100.0%	100.0%	

* Sample size too small for reliability. No data shown for sample size less than 50.

TABLE C
 EDUCATIONAL LEVEL, ENLISTED WOMEN,
 1973-1974

<u>Educational Level</u>	<u>November 1973</u>	<u>November 1974</u>
Less than eighth grade	-	-
Eighth grade graduate	-	-
One year high school (9th grade)	-	-
Two years high school (10th grade)	-	-
Three years high school (11th grade)	-	-
Four years high school (non-graduate)	-	-
High school graduate	65.0	66.5
GED credits for high school graduate	6.5	9.6
One year college	14.3	10.8
Two years college (non-associate)	5.9	2.5
GED credits for 2 years college	.6	.4
Two years college or more (associate)	2.2	2.0
Three years college (no degree)	1.5	2.5
Four years college (no degree)	.4	.4
College degree (B.A. or equivalent)	3.1	3.7
Law degree (LL.B, J.D.)	-	.4
Master's Degree (M.S., M.A.)	.4	.8
Doctor's Degree (PhD, MD)	.1	.4
Total	100.0%	100.0%

SECTION VI

RELIGIOUS PREFERENCE OF ARMY PERSONNEL

TABLE A
RELIGIOUS PREFERENCE, OFFICERS (MALE AND FEMALE)
BY GRADE, NOVEMBER 1974

Religious Preference	Total	Grade									
		COM OFF	COL	LTC	MAJ	CPT	1LT	2LT	WO		
Protestant	57.0	56.5	65.6	60.6	60.8	56.2	50.4	48.5	63.1		
Latter Day Saints (Mormon)	2.0	2.0	.6	2.0	1.7	1.3	3.4	3.7	1.7		
Roman Catholic	25.6	26.4	24.7	28.1	24.2	25.1	27.6	31.7	17.0		
Eastern (Greek) Orthodox	.9	1.0	.6	2.0	.8	.8	.9	1.3	--		
Hebrew	1.8	1.9	.6	.8	2.9	2.9	.9	.5	--		
Moslem (Islam, Mohammedan)	.3	.3	.6	.5	.2	--	.9	--	.3		
Buddhist	.3	.3	1.1	--	.3	.1	1.1	--	.3		
Other religion not listed	2.8	2.7	3.4	1.5	2.9	1.8	3.0	5.6	4.5		
No religious preference	9.3	8.9	2.8	4.5	6.2	11.8	11.8	8.7	13.1		
Total	100.0%	100.0%	100.0%	100.0%	100.0%	100.0%	100.0%	100.0%	100.0%	100.0%	100.0%

TABLE B
 RELIGIOUS PREFERENCE, OFFICERS 1972 AND 1974

<u>Religious Preference</u>	<u>NOVEMBER 1972</u>	<u>NOVEMBER 1974</u>
	<u>MALE</u>	<u>MALE/FEMALE</u>
Protestant	62.0	57.0
Latter Day Saints (Mormon)	2.0	2.0
Roman Catholic	23.8	25.6
Eastern (Greek) Orthodox	.4	.9
Hebrew	1.5	1.8
Moslem (Islam, Mohammedan)	.1	.3
Buddhist	.2	.3
Other religion not listed	1.7	2.8
No religious preference	<u>8.3</u>	<u>9.3</u>
Total	100.0%	100.0%

TABLE C

RELIGIOUS PREFERENCE, ENLISTED PERSONNEL (MALE AND FEMALE)
BY GRADE, NOVEMBER 1974

Religious Preference	Total	Grade									
		SGM	MSG JSG	SFC SP7	SSG SP6	SGT SP5	CPL SP4	PFC	PV2	PV1	
Protestant	47.4	-	53.7	68.1	59.0	51.0	41.9	36.4	44.8	44.5	
Latter Day Saints (Mormon)	3.1	-	1.9	1.2	2.2	3.3	2.3	4.0	4.8	8.7	
Roman Catholic	19.8	-	29.6	15.5	18.4	19.3	21.0	21.5	18.0	20.0	
Eastern (Greek) Orthodox	.7	-	-	1.0	.6	.5	.6	.5	1.6	2.0	
Hebrew	.8	-	.9	1.0	.4	.5	.9	.5	1.4	.7	
Moslem (Islam, Mohammedan)	.7	-	1.9	.2	-	-	1.1	.8	1.2	-	
Buddhist	.9	-	.9	.5	.4	1.0	1.1	1.2	.3	.7	
Other religion not listed	13.1	-	3.7	4.8	6.4	10.3	15.6	17.4	18.1	14.7	
No religious preference	13.5	-	7.4	7.7	12.6	14.1	15.5	17.7	9.8	8.7	
Total	100.0%	100.0%*	100.0%	100.0%	100.0%	100.0%	100.0%	100.0%	100.0%	100.0%	

* Sample size too small for reliability. No data shown for sample size less than 50.

TABLE D
 RELIGIOUS PREFERENCE, ENLISTED PERSONNEL,
 1972 and 1974

<u>Religious Preference</u>	<u>NOVEMBER 1972</u>		<u>NOVEMBER 1974</u>	
	<u>MALE</u>		<u>MALE/FEMALE</u>	
Protestant	64.6		47.4	
Latter Day Saints (Mormon)	1.4		3.1	
Roman Catholic	19.0		19.8	
Eastern (Greek) Orthodox	.2		.7	
Hebrew	.3		.8	
Moslem (Islam, Mohammedan)	.2		.7	
Buddhist	.4		.9	
Other religion not listed	3.4		13.1	
No religious preference	<u>10.5</u>		<u>13.5</u>	
Total	100.0%		100.0%	

END

FILMED

7-1-52

DTIC