

AD-A142 898

NATIONAL PROGRAM FOR INSPECTION OF NON-FEDERAL DAMS
BIRGE POND DAM (CT 00..10) CORPS OF ENGINEERS WALTHAM
MA NEW ENGLAND DIV JUL 80

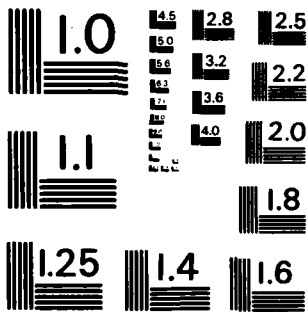
1/ (

UNCLASSIFIED

F/G 13/13

NL





MICROCOPY RESOLUTION TEST CHART
NATIONAL BUREAU OF STANDARDS-1963-A

UNCLASSIFIED

SECURITY CLASSIFICATION OF THIS PAGE (When Data Entered)

1

REPORT DOCUMENTATION PAGE

READ INSTRUCTIONS BEFORE COMPLETING FORM

1. REPORT NUMBER CT 00007		2. GOVT ACCESSION NO.	3. RECIPIENT'S CATALOG NUMBER
4. TITLE (and Subtitle) Birge Pond Dam; Connecticut River Basin; Bristol Connecticut NATIONAL PROGRAM FOR INSPECTION OF NON-FEDERAL DAMS		5. TYPE OF REPORT & PERIOD COVERED INSPECTION REPORT	
7. AUTHOR(s) J.S. ARMY CORPS OF ENGINEERS NEW ENGLAND DIVISION		6. PERFORMING ORG. REPORT NUMBER	
PERFORMING ORGANIZATION NAME AND ADDRESS		8. CONTRACT OR GRANT NUMBER(s)	
1. CONTROLLING OFFICE NAME AND ADDRESS DEPT. OF THE ARMY, CORPS OF ENGINEERS NEW ENGLAND DIVISION, NEDED 424 TRAPELO ROAD, WALTHAM, MA. 02254		10. PROGRAM ELEMENT, PROJECT, TASK AREA & WORK UNIT NUMBERS	
4. MONITORING AGENCY NAME & ADDRESS (if different from Controlling Office)		12. REPORT DATE July 1980	13. NUMBER OF PAGES 125
		15. SECURITY CLASS. (of this report) UNCLASSIFIED	
		15a. DECLASSIFICATION/DOWNGRADING SCHEDULE	

6. DISTRIBUTION STATEMENT (of this Report)
APPROVAL FOR PUBLIC RELEASE: DISTRIBUTION UNLIMITED

17. DISTRIBUTION STATEMENT (of the abstract entered in Block 20, if different from Report)

18. SUPPLEMENTARY NOTES
Cover program reads: Phase I Inspection Report, National Dam Inspection Program; however, the official title of the program is: National Program for Inspection of Non-Federal Dams; use cover date for date of report.

19. KEY WORDS (Continue on reverse side if necessary and identify by block number)
DAMS, INSPECTION, DAM SAFETY,
Connecticut River Basin
Hartford County
Bristol, Ct.

DTIC ELECTE
JUL 9 1984

20. ABSTRACT (Continue on reverse side if necessary and identify by block number)
The Birge Pond Dam consists of an earth embankment with a top width of 15 ft., a maximum height of 16 ft, an upstream slope of 2.5 horizontal to 1 vertical, and a downstream slope of 2.6 horizontal to 1 vertical. There are numerous trees growing from the upstream and downstream slopes of the embankment. The dam is 320 ft. long, including a 57.3 ft. long concrete overflow spillway located near the left end of the dam. The spillway was reportedly formed by constructing a reinforced concrete slab over the top of an existing earth and timber cribbing dam. The outlet works located at the left end of the dam consist of an upstream gatehouse and unknown piping which formerly supplied water to a downstream manufacturing plant.

84 06 29 058

AD-A142 898
DTIC FILE COPY

BIRGE POND DAM
CT 00007

CONNECTICUT RIVER BASIN
BRISTOL, CONNECTICUT

S DTIC
ELECT
JUL 9 1984
A

Accession For	
GRA&I	<input checked="" type="checkbox"/>
...	<input type="checkbox"/>
...need	<input type="checkbox"/>
...tion	
...	
... Codes	
...	

AI

DTIC
COPY
1/10/84

PHASE I INSPECTION REPORT
NATIONAL DAM INSPECTION PROGRAM

ROALD HAESTAD, INC.
CONSULTING ENGINEERS

37 Brookside Road • Waterbury, Conn. 06708 • Tel. 203 753-9800

July 18, 1980

The Department of the Army
New England Division
Corps of Engineers
424 Trapelo Road
Waltham, Massachusetts 02154

Attention: E. P. Gould
Project Management Division

Re: Birge Pond Dam
Bristol, Connecticut

Gentlemen:

Following field surveys and a dam failure analysis of Birge Pond Dam, we conclude that the dam should be reclassified as having a low hazard potential.

We are enclosing a brief letter report substantiating our findings.

Very truly yours,
ROALD HAESTAD, INC.

By 
Roald Haestad



RH:cft
Encl.

TABLE OF CONTENTS

	<u>PAGE</u>
DESCRIPTION	1
EVALUATION OF HYDRAULIC/HYDROLOGIC FEATURES	2 - 3
OVERVIEW PHOTO	4
LOCATION PLAN	5
APPENDIX A ENGINEERING DATA	A-1 - A-3
APPENDIX B PHOTOGRAPHS	B-1 - B-3
APPENDIX C HYDROLOGIC COMPUTATIONS	C-1 - C-5
APPENDIX D INVENTORY FORMS	

DESCRIPTION

BIRGE POND DAM
CT 00007
CITY OF BRISTOL, COUNTY OF HARTFORD
ON BIRGE POND BROOK
OWNED AND OPERATED BY THE CITY OF BRISTOL

The Birge Pond Dam consists of an earth embankment with a top width of 15 feet, a maximum height of 16 feet, an upstream slope of 2.5 horizontal to 1 vertical, and a downstream slope of 2.6 horizontal to 1 vertical. There are numerous trees growing from the upstream and downstream slopes of the embankment. The dam is 320 feet long, including a 57.3 foot long concrete overflow spillway located near the left end of the dam. The spillway was reportedly formed by constructing a reinforced concrete slab over the top of an existing earth and timber cribbing dam. The outlet works located at the left end of the dam consist of an upstream gatehouse and unknown piping which formerly supplied water to a downstream manufacturing plant.

The dam appears to be in fair condition and requires some work.

EVALUATION OF HYDRAULIC/HYDROLOGIC FEATURES

The Birge Pond Dam has a tributary watershed of 1.44 square miles, a water surface area of 11 acres, a storage capacity of 105 Acre-Feet and a hydraulic height of 16 feet with the water level at the top of the dam. In accordance with the Corps of Engineers' Recommended Guidelines for Safety Inspection of Dams, the Birge Pond Dam is classified as "Small" in size based on storage capacity.

No plans or design data were available. An inspection report prepared by Clarence Blair Associates on March 20, 1963, is included in Appendix A.

A dam breach analysis was made using the Corps of Engineers' "Rule of Thumb" guidance for estimating downstream dam failure hydrographs. Failure was assumed with the water level at the top of the dam. The peak discharge from the dam breach was calculated to be 5,700 cfs.

The flood waters would travel 800 feet downstream to a railroad embankment. The embankment would restrict the flood flows and cause substantial ponding. The discharge through the railroad embankment would be controlled by a 7-foot diameter stone masonry culvert. Flood routing calculations at the railroad embankment indicate the water surface elevation after dam breach would be approximately at Elevation 385, equal to spillway level. The top of the railroad embankment is about Elevation 400. The maximum outflow from the culvert, with the water level at Elevation 385, would be about 700 cfs.

Downstream culverts have a capacity of 1080 cfs according to the Bristol City Engineer. The roadway approximately 200 feet downstream of the dam would be inundated by 15 feet of water and possibly washed out. It is doubtful the railroad embankment would be damaged as a result of the dam breach.

No homes are located within the potential limits of a dam breach flood, therefore, the loss of any lives is unlikely. The dam is classified as "Low" Hazard Potential in accordance with the Corps of Engineers' Recommended Guidelines for Safety Inspection of Dams.



OVERVIEW PHOTO

U.S. ARMY ENGINEER DIV NEW ENGLAND
CORPS OF ENGINEERS
WALTHAM, MASSACHUSETTS

ROALD HAESTAD, INC.
CONSULTING ENGINEERS
WATERBURY, CONNECTICUT

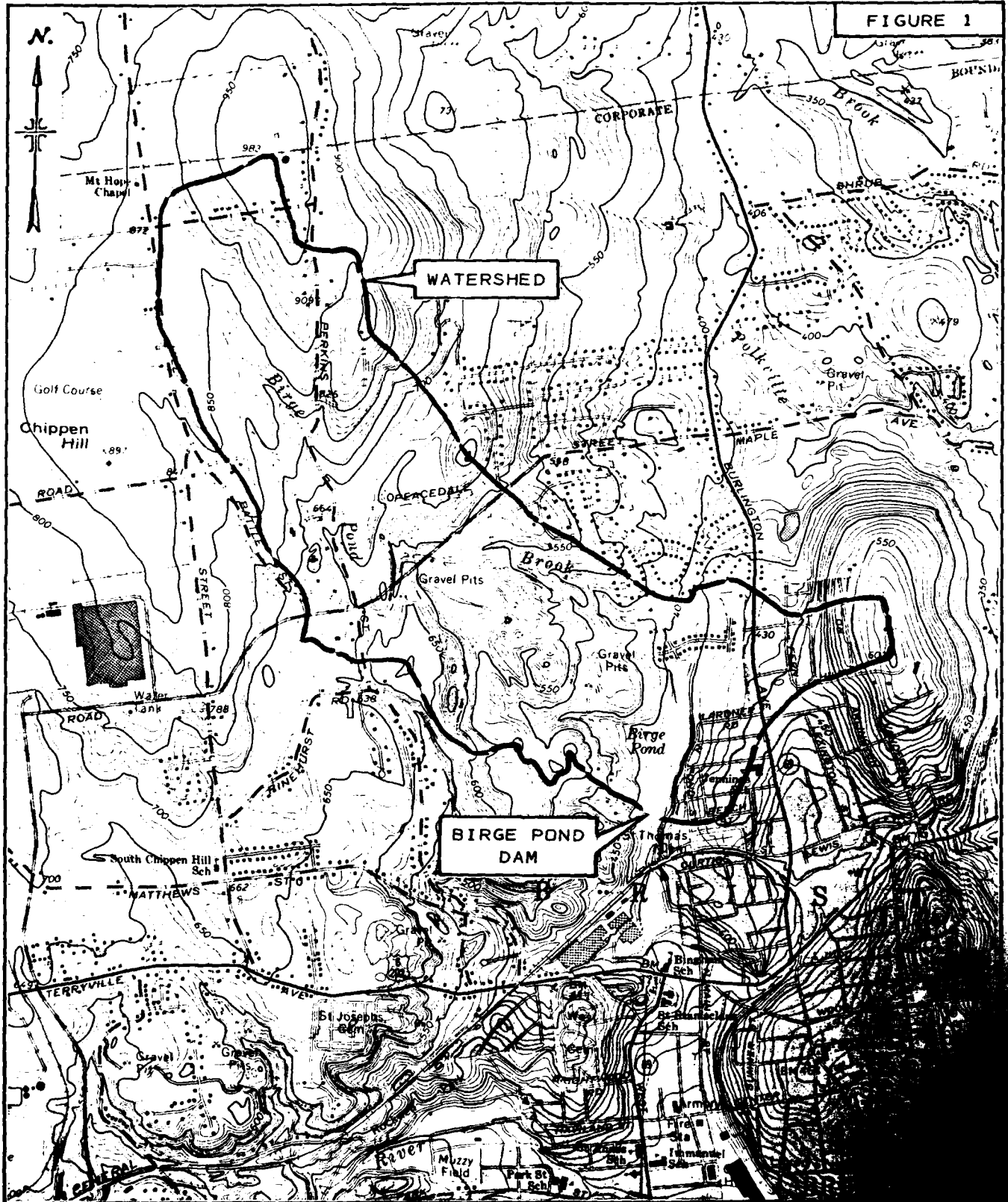
NATIONAL PROGRAM OF
INSPECTION OF
NON-FED. DAMS

BIRGE POND DAM - CT 00007

BIRGE POND BROOK

BRISTOL, CONNECTICUT DATE: 19 APRIL '80

FIGURE 1



LOCATION PLAN

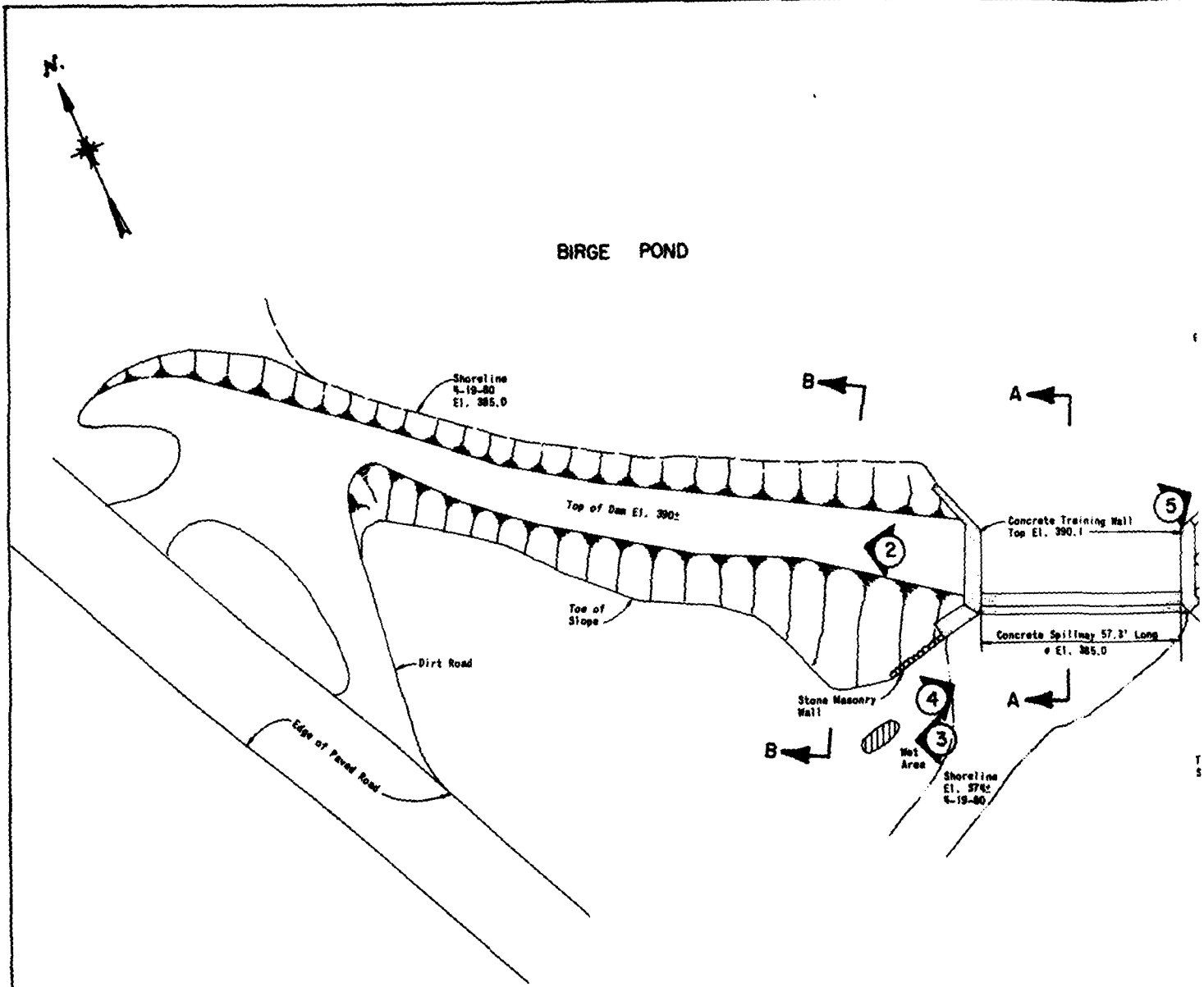
BIRGE POND DAM
BRISTOL, CONNECTICUT

SCALE: 1" = 2000'

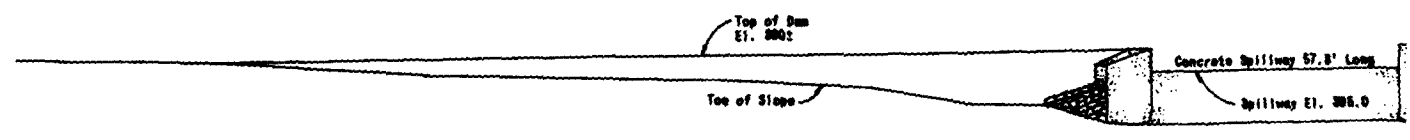
ROALD HAESTAD, INC.

BRISTOL QUADR.

Appendix A
Engineering Data



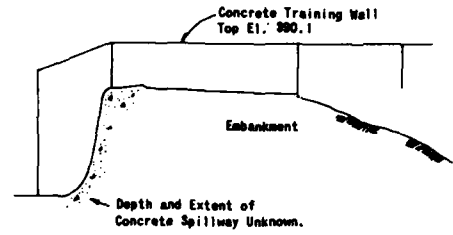
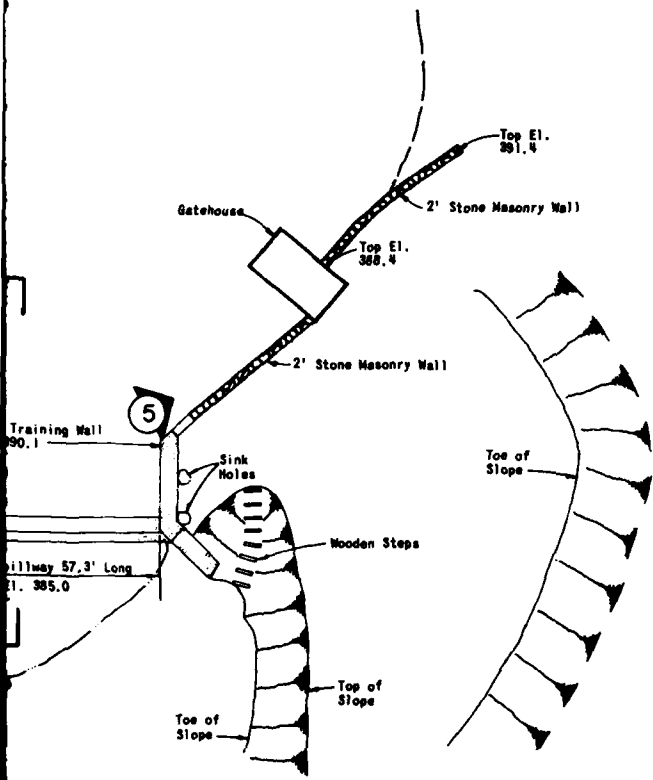
PLAN
Scale 1" = 20'



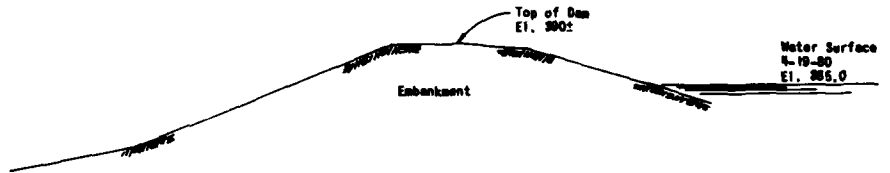
ELEVATION
Scale 1" = 20'

2

FIGURE 2



SECTION A-A
Scale 1" = 10'



SECTION B-B
Scale 1" = 10'



Denotes photo number and direction in which photo was taken.

RONALD HAESTAD, INC. CONSULTING ENGINEERS WATERBURY, CONNECTICUT	U.S. ARMY ENGINEER ON NEW ENGLAND CORPS OF ENGINEERS WALTHAM, MASS.
--	---

NATIONAL PROGRAM OF INSPECTION OF NON-FED. DAMS

BIRGE POND DAM

DRAWN	CHECKED	APPROVED	SCALES AS NOTED
JRS	RSL	RH	DATE JULY 1980 PAGE 4-

2

3

3

CLARENCE BLAIR ASSOCIATES, INC.

Civil Engineers

P. O. BOX 236 SPRUCE 7-7379
93 WHITNEY AVENUE — NEW HAVEN, CONN.

March 20, 1963

WATER SUPPLY
SEWAGE DISPOSAL
WASTE DISPOSAL
SURVEYS
LAND DEVELOPMENT

ROGER C. BROWN
JAMES C. BEACH
FRANK RAGAINI

CHARLES E. AUGUR, JR.
GORDON BILIDES
JOHN M. BREST
DONALD L. DISBROW
NICHOLAS PIPERAS, JR.

State Water Resources Commission
650 Main Street
Hartford 15, Connecticut.

Re: Birge Pond Dam
Bristol, Connecticut

Attention Mr. Emitt A. Dell.

Gentlemen;

At your request I made an inspection of the subject dam on March 15, 1963 accompanied by Mr. Vernon C. Geckler, Plant Engineer.

The dam is owned by the New Departure Division of General Motors Corporation and furnishes process and cooling water to their North Side Plant. It is located on Birge Pond Brook on the northerly outskirts of the City of Bristol. The dam consists of an earth embankment and a concrete spillway section, the total length being about 400 feet.

The tributary drainage as measured on the U. S. C. G. S. map is 920 acres or 1.4 square miles.

The water surface area of the pond is about 13 acres. The storage capacity, according to a contour map made in 1937, was 20 million gallons at that time. Plans, dated 1933, were on file showing the construction of the dam in its present form. The overflow section was formed by construction of a reinforced concrete slab over the top of an existing earth and timber cribbing dam. According to the plans the overflow section is 12.5 feet high from crest to apron and is 60 feet long. The spillway abutment walls are of concrete with the top of the walls 5 feet above the crest of the spillway. The top of embankment is shown on the plans at an elevation of 4.3' above the spillway crest.

Inspection of the dam itself shows it to be in good condition. Concrete in the spillway section and abutment walls show no evidence of cracks or deterioration. The embankment forming the westerly end of the dam is for the most part in good shape. At its extreme westerly end the top of the embankment is narrow and in some spots low. It is recommended that this section of embankment be brought up to the height and width of the remainder of the embankment by the placing of thoroughly compacted fill.

State Water Resources Commission
Hartford Connecticut

March 20, 1963

Some fairly good sized trees and one very large one are growing from the embankment. Trees are a hazard to an earth dam because of the possibility of their being uprooted during a storm and causing a weak spot in the embankment. It is recommended that all trees be removed from the top and downstream slope of the embankment.

A slight amount of water was observed emerging from the back side of the downstream end of the west abutment wall. Because of the fact that there was snow on the ground at the time of the inspection it was difficult to tell whether or not some of this water might be from melting snow. It was my opinion, however, that this water was leakage through the dam. In any case the amount of water involved is not great and constitutes no hazard at this time. It would be well to check this seepage during dry weather. It would also be well to observe it periodically to note if the flow has a tendency to increase.

The spillway capacity of the dam appears to be satisfactory provided that the top of embankment is maintained at the elevation shown on the plans which is 4.3' above the spillway crest. This depth provides a spillway capacity of 1000 cubic feet per second per square mile of drainage area.

About 800 feet below the dam the stream flows through a culvert under a railroad embankment estimated to be 50 feet in height. In case of failure of the Birge Pond Dam, this railroad embankment would restrain the resulting flood, the flow below the embankment being limited to the capacity of the culvert.

As a result of my investigation and inspection it is my opinion that the Birge Pond Dam is in good condition, has satisfactory spillway capacity, and presents no hazard from failure.

I would recommend that the following precautionary measures be taken;

1. Remove all trees from the top and downstream slope of the earth embankment.
2. Restore the embankment at the westerly end of the dam to a height and width equal to the original construction.
3. Observe periodically the seepage at the end of the west wing wall to determine if the volume tends to increase.

Very truly yours

Roger C. Brown
Roger C. Brown

RCB: esk

Appendix B

Photographs

Note: For Photo Locations,
see Figure 2,
Appendix A



PHOTO NO. 1

OVERVIEW OF DAM
NOTE RAILROAD EMBANKMENT
DOWNSTREAM OF DAM.

U.S. ARMY ENGINEER DIV. NEW ENGLAND
CORPS OF ENGINEERS
WALTHAM, MASSACHUSETTS

ROALD HAESTAD, INC.
CONSULTING ENGINEERS
WATERBURY, CONNECTICUT

NATIONAL PROGRAM OF
INSPECTION OF
NON-FED. DAMS

BIRGE POND DAM
BIRGE POND BROOK
BRISTOL, CONNECTICUT

CT 00007
19 APRIL '80



PHOTO NO. 2

DAM CREST FROM SPILLWAY.
 NOTE TREES ON UPSTREAM AND DOWNSTREAM SLOPES
 AND THE LACK OF UPSTREAM SLOPE PROTECTION



PHOTO NO. 3

SEEPAGE AREA NEAR TOE OF DAM

U.S. ARMY ENGINEER DIV. NEW ENGLAND
 CORPS OF ENGINEERS
 WALTHAM, MASSACHUSETTS

ROALD HAESTAD, INC.
 CONSULTING ENGINEERS
 WATERBURY, CONNECTICUT

NATIONAL PROGRAM OF
 INSPECTION OF
 NON-FED. DAMS

BIRGE POND DAM
 BIRGE POND BROOK
 BRISTOL, CONNECTICUT

CT 00007
 19 APRIL '80

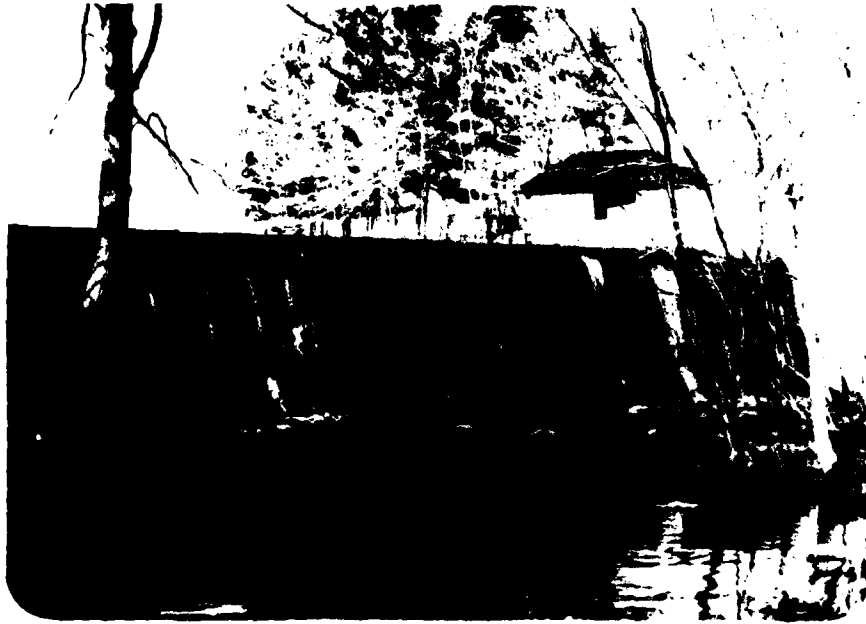


PHOTO NO. 4

SPILLWAY FROM DOWNSTREAM

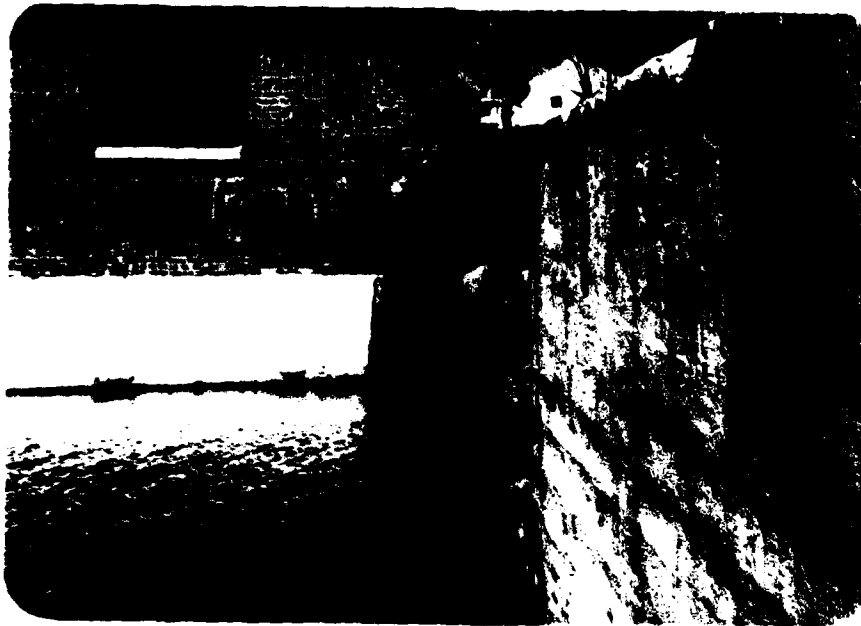


PHOTO NO. 5

STONE MASONRY WALL BETWEEN GATEHOUSE
AND LEFT SPILLWAY WALL. NOTE OUTWARD
MOVEMENT OF TOP OF WALL.

U.S. ARMY ENGINEER DIV NEW ENGLAND
CORPS OF ENGINEERS
WALTHAM, MASSACHUSETTS

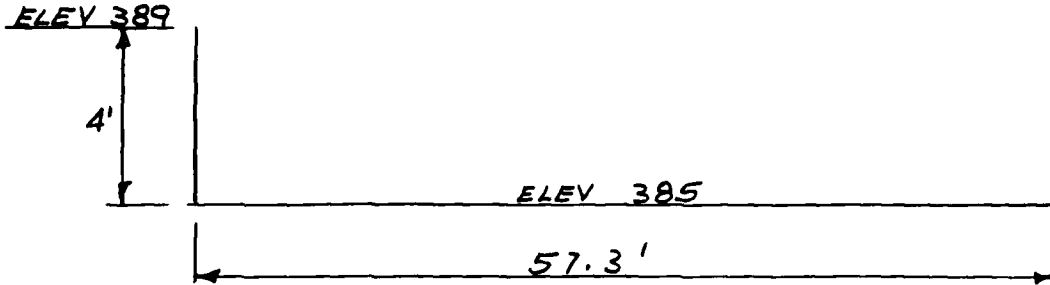
ROALD HAESTAD, INC.
CONSULTING ENGINEERS
WATERBURY, CONNECTICUT

NATIONAL PROGRAM OF
INSPECTION OF
NON-FED. DAMS

BIRGE POND DAM
BIRGE POND BROOK
BRISTOL, CONNECTICUT
CT 00007
19 APRIL '80

Appendix C
Hydrologic Computations

BY SAL DATE 5/14/80 **ROALD HAESTAD, INC.** SHEET NO. 1 OF 5
CONSULTING ENGINEERS
CKD BY DLs DATE 5/22/80 37 Brookside Road - Waterbury, Conn. 06708 JOB NO. 49-015
SUBJECT BIRGE POND DAM - Spillway Capacity



FREEBOARD = 4 ft

DISCHARGE COEFFICIENT = 2.6 (for a 20 foot broad-crested weir)

$$\begin{aligned} \text{Spillway Discharge Capacity} &= CLH^{3/2} \\ &= 2.6(57.3)(4)^{3/2} \\ &= 1,190 \text{ cfs} \end{aligned}$$

BY...SAH...DATE...5/2/80... ROALD HAESTAD, INC. SHEET NO...2...OF...5...
CONSULTING ENGINEERS
CKD BY D.H.S. DATE...5/14/80... 37 Brookside Road - Waterbury, Conn. 06708 JOB NO...049-15...
SUBJECT...BIRGE POND DAM - Dam Breach.....

$S = \text{Storage at time of failure} = \text{Storage at spillway level} + \text{Freeboard Storage}$

$$S = (20 \times 10^6 \text{ gal} \times 1 \text{ ac-ft} / 325,851 \text{ gal}) + (11 \text{ acres} \times 4 \text{ ft}) = 105 \text{ ac-ft}$$

Note: The 20MGD storage capacity at spillway was obtained from an inspection report by Clairance Blair Associates dated March 20, 1963.

$$Q_{p1} = \text{Peak Failure Outflow} = \frac{8}{27} W_b \sqrt{g} Y_0^{3/2}$$

$W_b = \text{Breach Width} = 40\% \text{ of dam length across river at mid height} = 0.4(133) = 53$

$Y_0 = \text{Total height from river bed to pool level at time of failure} = 16 \text{ ft}$

$$Q_{p1} = \frac{8}{27} (53) (\sqrt{32.2}) (16)^{3/2} = 5703 \text{ cfs}$$

SECTION NO 1 (Railroad Embankment)

$$Q_{p1} = 5703 \text{ cfs}$$

The embankment will act like a flood control dam with downstream discharge being controlled by the discharge capacity of a 7' diameter stone masonry culvert.

Assume $H = 18'$

$$Q_{p2} = 700 \text{ cfs}$$

Storage in reach = 53 ac-ft

Backwater from railroad culvert would be about Elev 385 equal to the spillway level of the dam.

BY *SAL* DATE *5/2/80* **ROALD HAESTAD, INC.** SHEET NO. *2* OF *5*
 CONSULTING ENGINEERS
 CKD BY *DLS* DATE *5/9/80* 37 Brookside Road - Waterbury, Conn. 06708 JOB NO. *049-15*
 SUBJECT *BIRGE POND DAM - Storage Capacity*

Storage between Dam and Railroad Embankment.

<i>Elevation (feet)</i>	<i>Surface Area (acres)</i>	<i>Average Surface Area (acres)</i>	<i>Storage Capacity (acres - ft)</i>
<i>367</i>	<i>0</i>		<i>0</i>
<i>370</i>	<i>0.9</i>	<i>0.45</i>	<i>1.4</i>
<i>380</i>	<i>4.6</i>	<i>2.75</i>	<i>28.9</i>
<i>390</i>	<i>7.3</i>	<i>5.95</i>	<i>88.4</i>

BY SAL DATE 5/2/80

ROALD HAESTAD, INC.
CONSULTING ENGINEERS

SHEET NO. 4 OF 5

CKD BY TLS DATE 5/14/80

37 Brookside Road - Waterbury, Conn. 06708

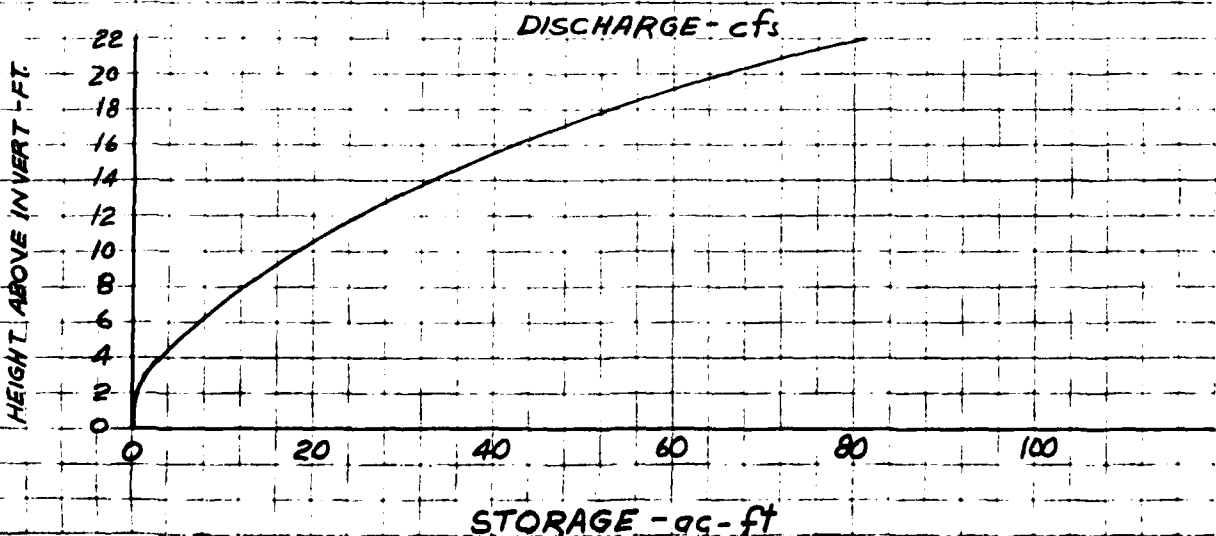
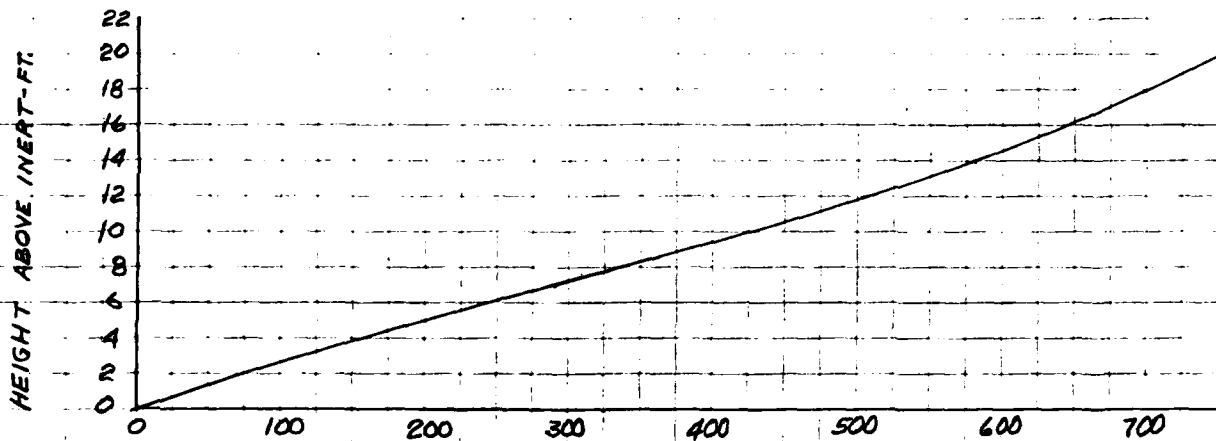
JOB NO. 049-15

SUBJECT BIRGE POND DAM - Flood Routing

SECTION NO 1 (Railroad Embankment)

- 1) Conduit is a 7' diam. stone masonry (Assume Inlet Control)
- 2) Invert is approx. at Elev. 367
- 3) Top. of railroad embankment is Elev 400.

Elev. (ft)	Hw (ft)	Hw/D (ft/ft)	Q (cfs)
367	0	0	0
374	7	1	290
381	14	2	580
388	21	3	780
395	28	4	920
400	33	4.7	1,000



Planimeter Readings:

1) Surface Area: Third = 0.60 sq in 0.12
 First = 0.36 sq in 0.13
 Start = 0.23

$$0.12 \text{ in}^2 \times \frac{(2000 \text{ ft})^2}{\text{in}^2} \times \frac{1 \text{ acre}}{43,560 \text{ ft}^2} = 11 \text{ acres}$$

2) Watershed: Third = 8.00 2.51 x 4 = 10.04 in²
 First = 2.97 2.51 (Note: 4 is a factor to convert
 Start = 0.46 planimeter readings into sq in)

$$10.04 \text{ in}^2 \times \frac{(2000 \text{ ft})^2}{\text{in}^2} \times \frac{1 \text{ sq mi}}{(5,280 \text{ ft})^2} = 1.44 \text{ sq mi}$$

Surface area between dam and railroad embankment.

3) Contour 370: Third = 0.16 sq in 0.01
 First = 0.15 sq in 0.01
 Start = 0.14 sq in

$$0.01 \text{ in}^2 \times \frac{(2000 \text{ ft})^2}{\text{in}^2} \times \frac{1 \text{ acre}}{43,560 \text{ ft}^2} = 0.92 \text{ acres}$$

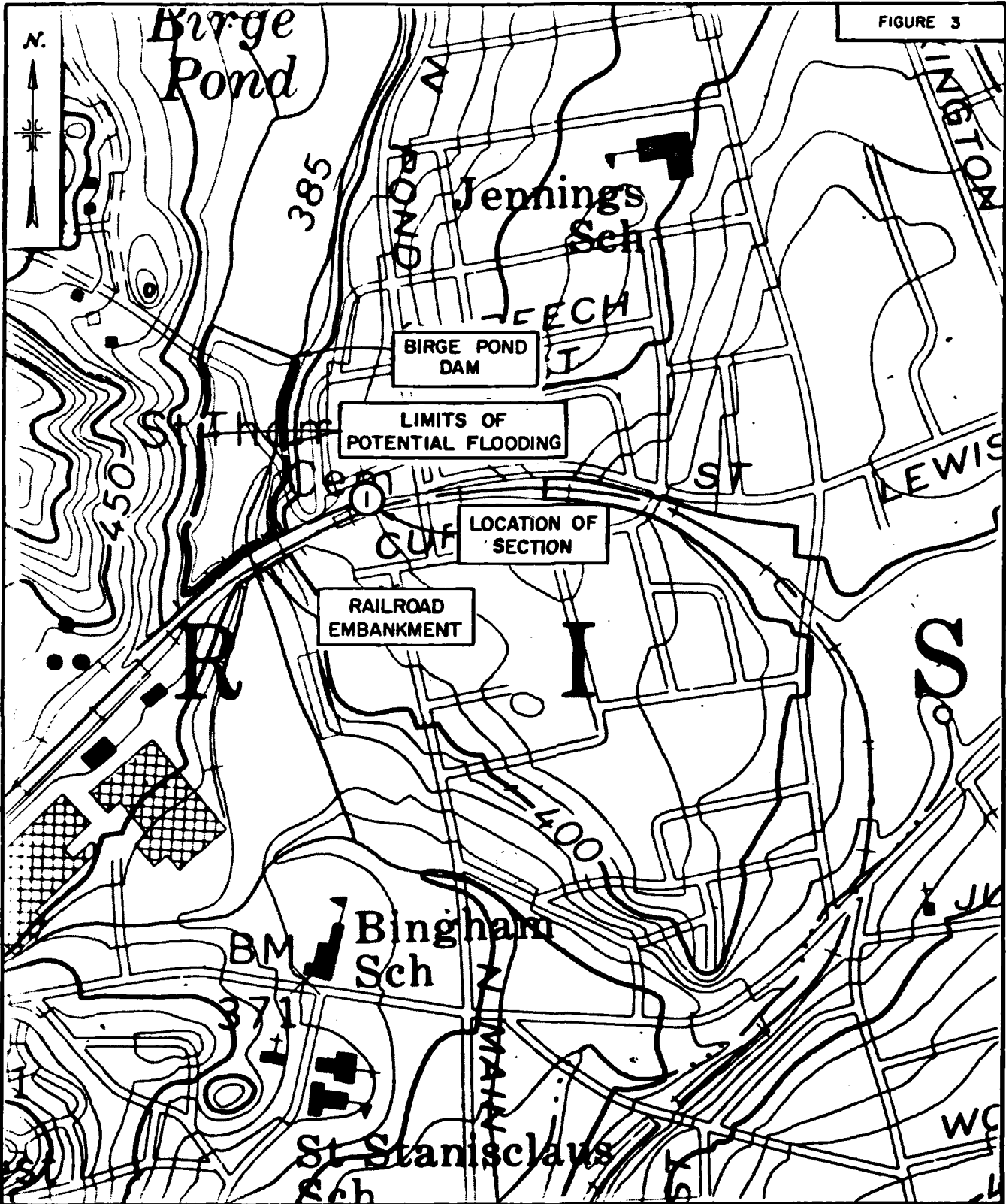
4) Contour 380: Third = 0.44 sq in 0.05
 First = 0.34 sq in 0.06
 Start = 0.28 sq in

$$0.05 \text{ in}^2 \times \frac{(2000 \text{ ft})^2}{\text{in}^2} \times \frac{1 \text{ acre}}{43,560 \text{ ft}^2} = 4.6 \text{ acres}$$

5) Contour 390: Third = 0.47 sq in 0.08
 First = 0.32 sq in 0.08
 Start = 0.24 sq in

$$0.08 \text{ in}^2 \times \frac{(2000 \text{ ft})^2}{\text{in}^2} \times \frac{1 \text{ acre}}{43,560 \text{ ft}^2} = 7.3 \text{ acres}$$

FIGURE 3



LIMITS OF POTENTIAL FLOODING

BIRGE POND DAM

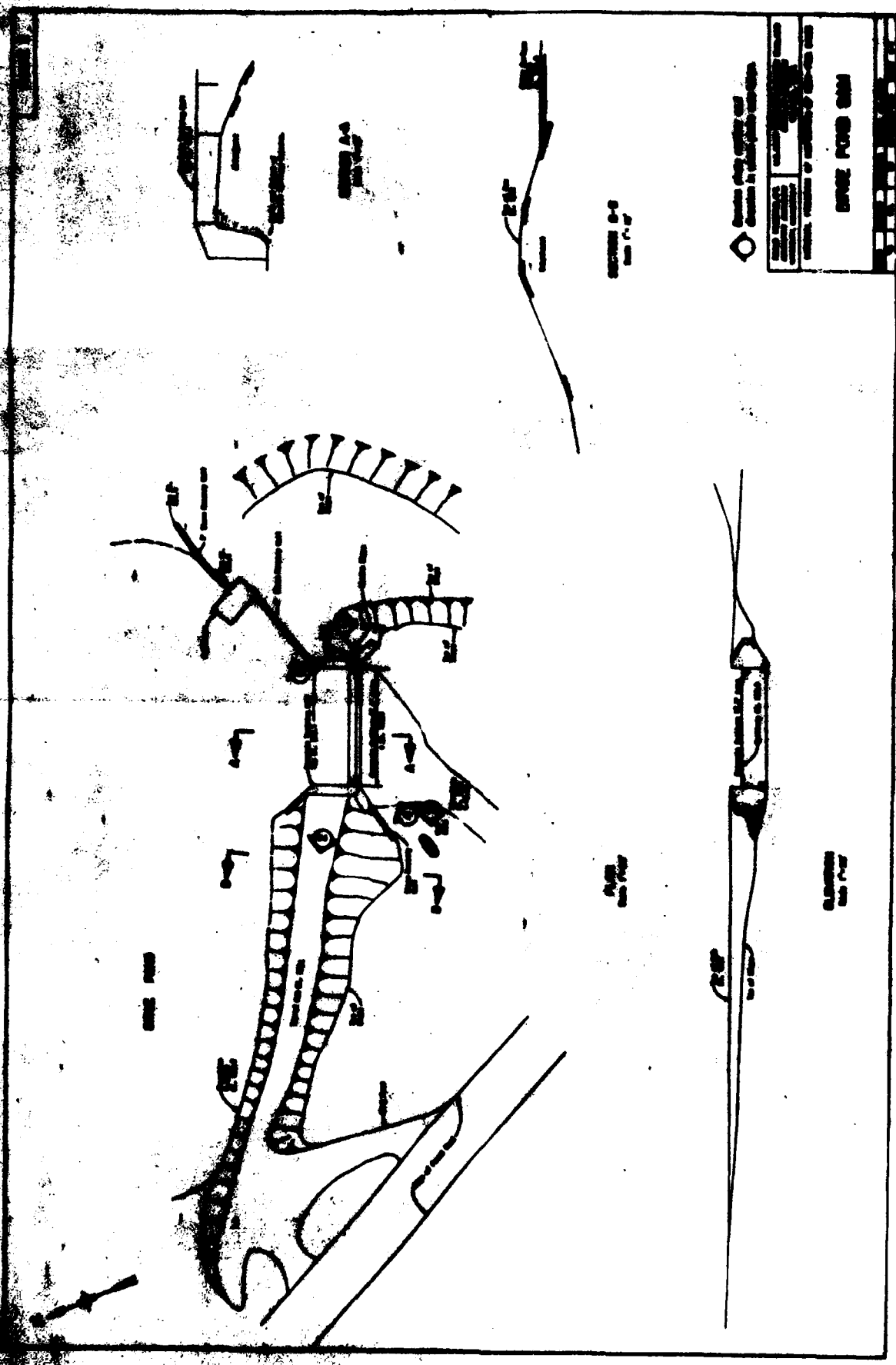
BRISTOL, CONNECTICUT

SCALE: 1" = 500'

ROALD HAESTAD, INC.

BRISTOL QUADRANGLE 1972

Appendix D
Inventory Forms



100-100

100-100

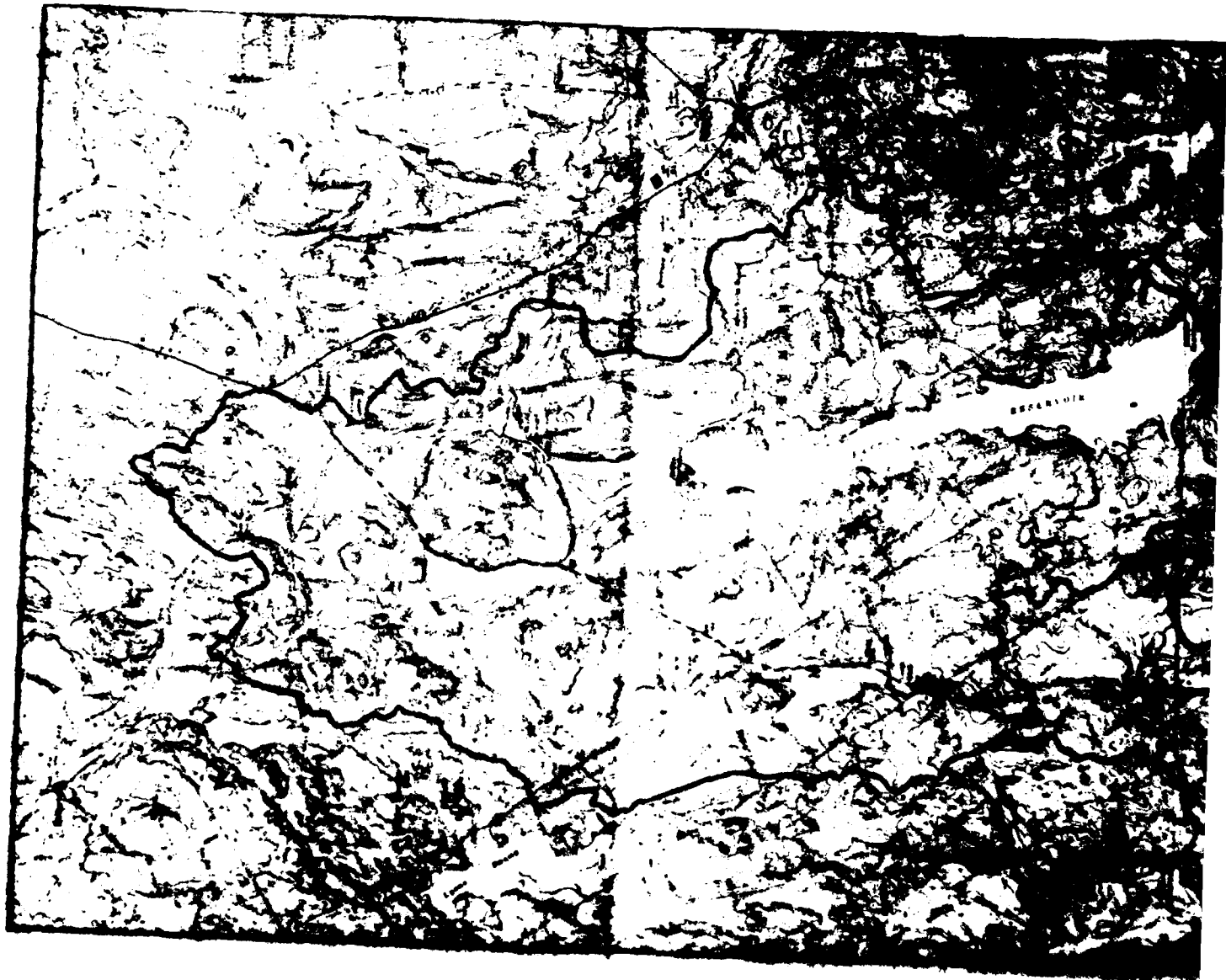
100-100

100-100

100-100

100-100

<p>100-100</p>	
<p>100-100</p>	<p>100-100</p>
<p>100-100</p>	<p>100-100</p>
<p>100-100</p>	<p>100-100</p>





FEDERAL INVENTORY OF DAMS IN THE UNITED STATES

STATE NUMBER	IDENTITY NUMBER	DIVISION	STATE	COUNTY	CITY	NAME	LATITUDE (N/E/S/W)	LONGITUDE (E/W)	REPORT DATE (MO/DA/YR)
CT	17	NED	CT	001	04	BAMP HORTAR RESERVOIR DAM	41.15.0	73.15.7	11JUL79

POPULAR NAME	NAME OF IMPROVEMENT
BAMP HORTAR RESERVOIR	BAMP HORTAR RESERVOIR

REGION/DASH	NEAREST DOWNSTREAM CITY-TOWN-VILLAGE
01 07	PAIRFIELD

TYPE OF DAM	YEAR COMPLETED	PURPOSES	HYDRO-ELECTRIC CAPACITY (KW)	IRREGULAR CAPACITIES (ACFT)	DIST OWN	FED R	PRV/FED	SGS A	VEN/DATE
RECTPG	1901	R	29	29	588	333	NED	N	N

REMARKS									

D/S HAS	SILLWAY LENGTH	TYPE	WIDTH	MATERIAL	DISCHARGE (FT ³ /S)	VOLUME OF DAM (CVI)	POWER CAPACITY (KW)	WATER CONTROL	REGULATED	RESERVOIR	NO. OF DAMS	NAVIGATION LOCKS
1	320	U	105	5269								

OWNER	ENGINEERING BY
LAKE HILLS ASSOCIATION	8. G. STODARD JR
	CONSTRUCTION BY
	BRIDGEPORT HYDRAULIC CO

DESIGN	CONSTRUCTION
CT WATER RESOURCES	CT WT RESOURCES
	OPERATION
	MAINTENANCE

INSPECTION BY	INSPECTION DATE
PHILIP M GEMOVESE AND ASSOCIATES	20DEC78
	AUTHORITY FOR INSPECTION
	PUBLIC LAW 92-367 8AUG1972

REMARKS	

DATE
LMED
88