

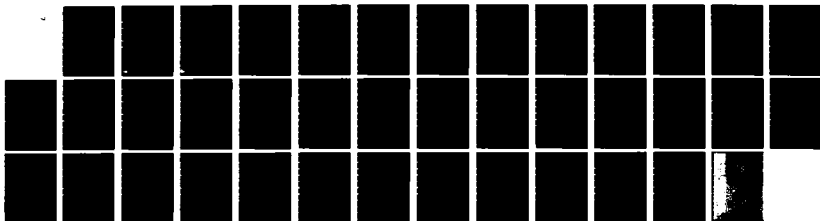
AD-A143 549

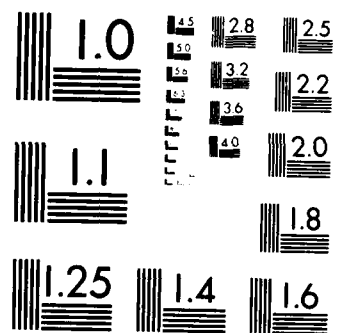
14823B LANCE MISSILE NUMBER 5342 ROUND NUMBER 397-AST
12 APRIL 1984(U) ARMY ELECTRONICS RESEARCH AND
DEVELOPMENT COMMAND WSMR NM ATM. D C KELLER MAY 84
ERADCOM/ASL-DR-1340 F/G 4/2

1/1

UNCLASSIFIED

NL





MICROCOPY RESOLUTION TEST CHART
NATIONAL BUREAU OF STANDARDS-1963 A

APPROVED FOR PUBLIC RELEASE; DISTRIBUTION UNLIMITED

DR 1340

May 84

ADP

AD-A143 549

METEOROLOGICAL DATA REPORT

14823B Lance

Missile Number 5342

Round Number 397-AST

12 April 1984

by

DONALD C. KELLER

Program Support Coordinator

Phone Number (505) 679-9568

AVN Number 349-9568

ATMOSPHERIC SCIENCES LABORATORY
WHITE SANDS MISSILE RANGE, NEW MEXICO

FILE COPY

ECOM

UNITED STATES ARMY ELECTRONICS COMMAND

84 07 24 017

DISPOSITION INSTRUCTIONS

Destroy this report when it is no longer needed. Do not return to the originator.

DISCLAIMER

The findings in this report are not to be construed as an official Department of the Army position, unless so designated by other authorized documents.

The citation of trade names and names of manufacturers in this report is not to be construed as official Government indorsement or approval of commercial products or services referenced herein.

REPORT DOCUMENTATION PAGE		READ INSTRUCTIONS BEFORE COMPLETING FORM
1. REPORT NUMBER DR 1340	2. GOVT ACCESSION NO. AD-214364	3. RECIPIENT'S CATALOG NUMBER
4. TITLE (and Subtitle) 14823B Lance Missile Number 5342 Round Number 397-AST	5. TYPE OF REPORT & PERIOD COVERED	
	6. PERFORMING ORG. REPORT NUMBER	
7. AUTHOR(s) White Sands Meteorological Team	8. CONTRACT OR GRANT NUMBER(s) DA Task 1F665702D127-02	
9. PERFORMING ORGANIZATION NAME AND ADDRESS	10. PROGRAM ELEMENT, PROJECT, TASK AREA & WORK UNIT NUMBERS	
11. CONTROLLING OFFICE NAME AND ADDRESS US Army Electronics Research & Development Cmd Atmospheric Sciences Laboratory White Sands Missile Range, New Mexico 88002	12. REPORT DATE 12 Apr 84	
	13. NUMBER OF PAGES	
14. MONITORING AGENCY NAME & ADDRESS (if different from Controlling Office) US Army Electronics Research and Development Cmd Adelphi, MD 20783	15. SECURITY CLASS. (of this report) UNCLASSIFIED	
	15a. DECLASSIFICATION/DOWNGRADING SCHEDULE	
16. DISTRIBUTION STATEMENT (of this Report)		
17. DISTRIBUTION STATEMENT (of the abstract entered in Block 20, if different from Report) Approved for public release; distribution unlimited.		
18. SUPPLEMENTARY NOTES		
19. KEY WORDS (Continue on reverse side if necessary and identify by block number)		
20. ABSTRACT (Continue on reverse side if necessary and identify by block number) Meteorological data gathered for the launching of the 14323B Lance, Missile Number 5342, Round Number 397-AST are presented in tabular form.		

CONTENTS

PAGE

INTRODUCTION-----	1
DISCUSSION-----	1
GENERAL AREA MAP-----	2
TABLES:	
1. Surface Observation Taken at 0525 MST at LC-39 -----	3
2. LC-36 Pilot-Balloon Measured Wind Data Taken at 0515 MST -----	4
3. LC-36 Pilot-Balloon Measured Wind Data Taken at 0532 MST -----	5
4. Aiming and T-Time Computer Met Message Data -----	6
5. WSD Significant Level Data at 0001 MST -----	7
6. WSD Upper Air Data at 0001 MST -----	8
7. WSD Mandatory Levels at 0001 MST -----	13
8. NW-30 Significant Level Data at 0230 MST -----	14
9. NW-30 Upper Air Data at 0230 MST -----	15
10. NW-30 Mandatory Levels at 0230 MST -----	19
11. Jallen Significant Level Data at 0400 MST -----	20
12. Jallen Upper Air Data at 0400 MST -----	22
13. Jallen Mandatory Levels at 0400 MST -----	27
14. WSD Significant Level Data at 0525 MST -----	28
15. WSD Upper Air Data at 0525 MST -----	29
16. WSD Mandatory Level Data at 0525 MST -----	34

INTRODUCTION

14823B LANCE, Missile Number 5342, Round Number 397-AST, was launched from LC-39, White Sands Missile Range (WSMR), New Mexico, at 0525:03 MST, 12 Apr 1984. The scheduled launch time was 0400 MST.

DISCUSSION

Meteorological data were recorded and reduced by the White Sands Meteorological Team, Atmospheric Sciences Laboratory (ASL), White Sands Missile Range, New Mexico. The data were obtained by the following methods:

1. Observations

a. Surface

(1) Standard surface observations to include pressure, temperature ($^{\circ}\text{C}$), relative humidity, dew point ($^{\circ}\text{C}$), density (gm/m^3), wind direction and speed and cloud cover were made at the LC-39 Met Site at T-0 minutes.

(2) Monitor of wind speed and direction from one anemometer was provided in the launch control room.

b. Upper Air

(1) Low level wind data were obtained from RAPTS T-9 pibal observation at:

SITE AND ALTITUDE

LC-36 7,000 ft.
LC-36 10,000 ft.

(2) Air structure data (rawinsonde) were collected at the following Met Sites.

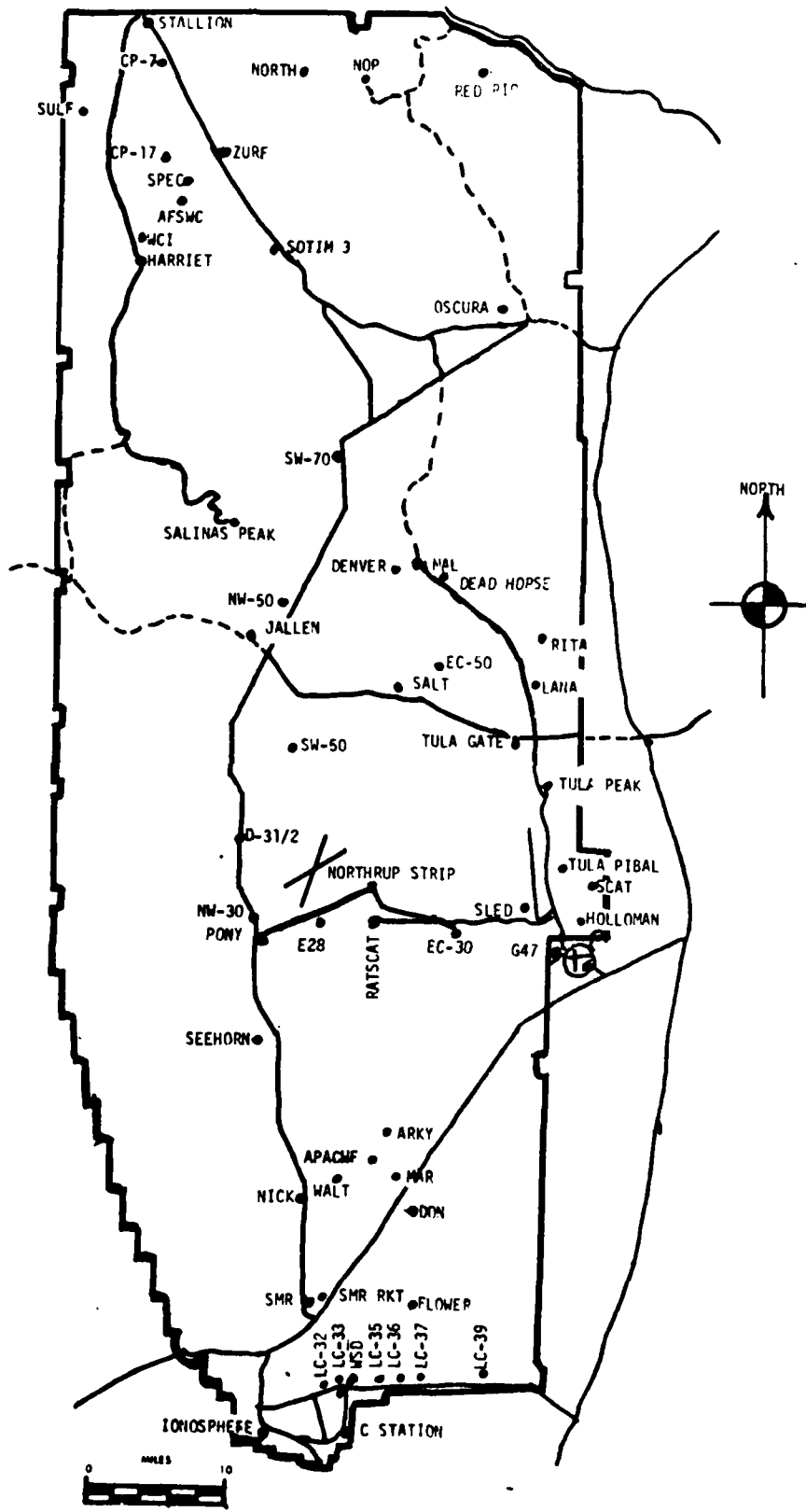
SITE AND TIME

WSD 0001 MST
NW-30 0230 MST
JAL 0400 MST
WSD 0525



A 1

WSMR METEOROLOGICAL SITES



PROJECT SURFACE OBSERVATION

TABLE <u>1</u>		STATION <u>LC-39</u>							
DATE <u>12</u> <u>APR</u> <u>84</u>	X = <u>530,938.82</u>	Y = <u>136,564.96</u>	H = <u>4,063.75</u>						
<u>DAY</u>	<u>MONTH</u>	<u>YEAR</u>							
TIME M S I	PRESSURE mbs	TEMPERATURE OF OC	DEN POINT OF OC	RELATIVE HUMIDITY %	DENSITY gm/m ³	DIRECTION degs Tn	WIND SPEED kts	CHARACTER kts	VISIBIL- ITY
0525	876.2	8.2	-9.6	27		020	04		30

OBSTRUCTIONS TO VISIBILITY	CLOUDS						REMARKS		
	1st LAYER		2nd LAYER		3rd LAYER				
	AMT	TYPE	HGT	AMT	TYPE	HGT	AMT	TYPE	HGT
	0	AC	14000	1	CI	26000			

PSYCHROMETRIC COMPUTATION

TIME:	MST	0525
DRY BULB TEMP.		8.2
WET BULB TEMP.		1.4
WET BULB DEPR.		6.8
DEN POINT		-9.6
RELATIVE HUMID.		27

AIMING AND T-TIME COMPUTER MET MESSAGE DATA

12 April 1984

WSD 0001 MST

METCM1324064

120700122875

00640010 28990875
 01011020 29090864
 02006023 29000839
 03599015 28720801
 04545016 28380754
 05499022 28060710
 06482025 27800668
 07502028 27450628
 08501035 27040590
 09501038 26640554
 10498042 26240519
 11489040 25880486
 12465035 25400440
 13464035 24740384
 14487033 23840334
 15497036 22950289
 16501037 22060248
 17494033 21220212
 18517044 20660180
 19493035 20770153
 20499053 20550130
 21516054 20600110
 22524041 20900093
 23484008 21360080
 24419008 21070068
 25467007 21190058
 26048005 21440049

NW-30 0230 MST

METCM1329065

120950122876

00000000 28540876
 01101007 28690865
 02041012 28600840
 03020010 28380801
 04590007 28120754
 05533021 27890709
 06499025 27620667
 07514027 27240627
 08509035 26850589
 09489037 26470552
 10494040 26090518
 11497041 25780485
 12487041 25290438
 13484044 24530382
 14467044 23710332
 15485046 22840287
 16492047 21940246
 17490045 21110210
 18514048 20730179
 19501047 20840152
 20518051 20650129
 21522060 20750109
 22538039 21030093
 23360005 20910079
 24450025 21050067
 25443019 21430057
 26076011 21340049

JALLEN 0400 MST

METCM1332065

121100124874

00444004 28570874
 01543008 28620864
 02464004 28640838
 03530021 28260799
 04583017 28120752
 05541020 27880708
 06483026 27510666
 07492023 27150625
 08500029 26780587
 09498038 26410551
 10501043 26040516
 11497045 25720483
 12500046 25190437
 13492051 24440381
 14479056 23690331
 15478055 22800286
 16481052 21910245
 17496054 21140209
 18512058 20760178
 19510065 20970151
 20526054 20700129
 21528055 20600109
 22535033 20840093
 23420013 20930079
 24491008 21240067
 25620008 21210057
 26059009 21510049

WSD 0525 MST

METCM1324064

121240122878

00053010 28590878
 01013023 28580867
 02023025 28550842
 03024008 28450802
 04598008 28190755
 05516016 27870711
 06492025 27560668
 07502022 27250628
 08501024 26870590
 09492031 26490553
 10497034 26080519
 11509036 25710486
 12509039 25230439
 13497037 24470383
 14480039 23720332
 15490042 22860287
 16485043 22020247
 17486046 21290211
 18511047 21020180
 19512049 21040153
 20543044 20790130
 21537035 20740110
 22535021 20680094
 23502024 20850080
 24510017 21320068
 25557017 21470058
 26021005 21540049

STATION ALTITUDE 3989.00 FEET MSL
 12 APR. 84
 U001 HRS MST
 ASCENSION NO. 206

SIGNIFICANT LEVEL DATA
 1030020206
 WHITE SANDS

GEODETIC COORDINATES
 32.40043 LAT DEG
 106.37033 LON DEG

TABLE 5

PRESSURE MILLIBARS	GEOMETRIC ALTITUDE MSL FEET	TEMPERATURE AIR DEGREES CENTIGRADE	REL. HUM. PERCENT	
874.5	3989.0	16.4	-9.4	16.0
268.3	4187.8	17.6	-7.7	17.0
350.0	4784.0	17.2	-8.0	17.0
771.9	7453.5	11.5	-10.6	20.0
700.0	10110.7	6.2	-9.2	32.0
658.3	11757.3	3.9	-17.0	20.0
500.0	18873.5	-13.2	-37.0	30.0
423.5	22970.3	-21.1	-38.5	19.0
400.0	24351.3	-23.2	-40.8	18.0
312.0	31149.3	-39.0	-53.3	20.0
300.0	31030.4	-41.4		
250.0	35009.9	-52.3		
200.0	39638.1	-64.1		
177.8	41984.4	-69.0		
173.2	42503.8	-66.8		
168.6	43043.5	-64.1		
159.4	44177.2	-63.7		
150.0	45400.3	-65.8		
142.0	46691.2	-68.3		
128.2	49523.3	-66.4		
119.4	49930.2	-70.3		
110.9	51392.9	-66.0		
100.0	53443.9	-66.0		
89.3	55745.5	-63.1		
79.7	59085.2	-57.6		
70.0	60749.3	-64.1		
63.5	62744.8	-60.9		
54.4	65905.6	-61.6		
50.0	67647.2	-57.9		
45.0	69837.0	-58.2		
50.0	78551.0	-53.7		
24.2	82927.6	-52.9		
20.0	87021.2	-50.3		
15.6	91566.7	-48.2		

UPPER AIR DATA
103002J206
WHITE SANDS

STATION ALTITUDE 3989.00 FEET MSL
14 APR 84 0001 HRS MST
ASCENSION NO. 206

GEODETIC COORDINATES
32.40043 LAT DEG
106.37033 LON DEG

TABLE 6

GEOMETRIC ALTITUDE MSL FEET	PRESSURE MILLIBARS	TEMPERATURE		REL. HUM. PERCENT	DENSITY GM/CUBIC METER	SPEED OF SOUND KNOTS	WIND DATA		INDEX OF REFRACTION
		AIR DEGREES	DEWPOINT CENTIGRADE				DIRECTION DEGREES(TN)	SPEED KNOTS	
3989.0	874.5	16.4	-9.4	16.0	1050.8	663.3	360.0	1.0	1.000248
4000.0	874.2	16.5	-9.4	16.1	1050.1	663.4	359.1	1.1	1.000248
4500.0	856.7	17.4	-7.9	17.0	1028.0	664.5	352.3	5.6	1.000244
5000.0	843.4	16.7	-8.2	17.2	1012.0	663.8	351.3	10.1	1.000240
5500.0	828.3	15.7	-8.7	17.8	997.6	662.6	351.3	14.6	1.000237
6000.0	813.5	14.5	-9.2	18.4	983.4	661.3	349.5	17.8	1.000233
6500.0	798.9	13.5	-9.7	18.9	969.5	660.1	337.9	15.4	1.000230
7000.0	784.6	12.5	-10.2	19.5	955.7	658.8	323.7	14.0	1.000226
7500.0	770.6	11.4	-10.6	20.2	942.1	657.6	314.5	15.1	1.000223
8000.0	756.5	10.4	-10.1	22.5	928.1	656.5	306.4	16.5	1.000220
8500.0	742.7	9.4	-9.7	24.7	914.4	655.4	299.9	17.9	1.000218
9000.0	729.2	8.4	-9.5	27.0	900.8	654.2	294.1	19.5	1.000215
9500.0	715.9	7.4	-9.3	29.2	887.5	653.1	284.9	20.7	1.000212
10000.0	702.9	6.4	-9.2	31.5	874.4	651.9	277.0	22.4	1.000209
10500.0	689.9	5.7	-10.9	29.2	860.8	651.0	273.7	23.5	1.000205
11000.0	677.2	5.0	-13.1	25.5	847.2	650.1	271.5	24.5	1.000200
11500.0	664.6	4.3	-15.6	21.9	833.8	649.2	273.7	25.5	1.000195
12000.0	652.2	3.5	-17.3	20.3	821.0	648.1	276.0	26.5	1.000191
12500.0	639.7	2.1	-17.9	21.0	809.8	646.6	278.9	27.5	1.000188
13000.0	627.4	.9	-16.5	21.7	796.9	645.2	281.1	28.8	1.000185
13500.0	615.4	-3.3	-19.1	22.4	785.1	643.8	281.7	30.5	1.000182
14000.0	603.6	-1.2	-19.8	23.2	773.5	642.4	282.2	32.2	1.000179
14500.0	592.1	-2.7	-20.5	23.9	762.1	640.9	282.0	33.6	1.000176
15000.0	580.6	-3.9	-21.2	24.6	750.8	639.5	281.9	35.0	1.000173
15500.0	569.6	-5.1	-21.9	25.3	739.8	638.1	282.1	36.4	1.000170
16000.0	558.7	-6.3	-22.6	26.0	729.9	636.6	282.2	37.8	1.000168
16500.0	548.0	-7.5	-23.4	26.7	719.2	635.2	281.4	39.1	1.000165
17000.0	537.5	-9.7	-24.1	27.4	707.7	633.7	280.9	40.3	1.000162
17500.0	527.3	-9.9	-24.9	28.1	697.3	632.3	281.6	40.9	1.000160
18000.0	517.4	-11.1	-25.7	29.8	687.1	630.8	282.2	41.5	1.000157
18500.0	507.3	-12.3	-26.4	29.5	677.1	629.4	281.1	42.0	1.000155
19000.0	497.4	-13.4	-27.4	29.7	666.9	628.0	279.9	42.4	1.000152
19500.0	487.5	-14.4	-28.7	28.3	656.0	626.8	275.4	39.9	1.000149
20000.0	477.7	-15.4	-29.1	27.0	645.3	625.6	270.7	37.7	1.000147
20500.0	468.1	-16.3	-29.4	25.6	634.7	624.4	267.7	36.2	1.000144
21000.0	458.7	-17.3	-29.8	24.3	624.4	623.2	264.3	34.4	1.000141
21500.0	449.5	-18.3	-29.2	22.9	614.2	622.1	262.4	35.6	1.000139
22000.0	440.5	-19.2	-28.7	21.6	604.2	620.9	261.0	36.5	1.000136
22500.0	431.6	-20.2	-27.1	20.3	594.3	619.7	259.7	36.2	1.000134
23000.0	423.0	-21.1	-26.6	19.0	584.6	618.5	258.4	35.9	1.000131

UPPER AIR DATA
 1030020206
 WHITE SANDS

STATION ALTITUDE 3959.00 FEET MSL
 1. APR 68 0001 HRS MST
 ASCENSION NO. 206

GEOMETRIC COORDINATES
 32.40943 LAT DEG
 106.17033 LON DEG

TABLE 6 Con't

GEOMETRIC ALTITUDE MSL F FT	PRESSURE MILLIBARS	TEMPERATURE AIR DEGREES	TEMPERATURE DEWPOINT CENTIGRADE	REL. HUM. PERCENT	DENSITY GM/CUBIC METER	SPEED OF SOUND KNOTS	WIND DATA		INDEX OF REFRACTION
							DIRECTION DEGREES(TN)	SPEED KNOTS	
23500.0	414.3	-21.9	-39.4	16.6	574.4	617.6	258.2	36.0	1.000129
24000.0	405.9	-22.7	-40.2	16.3	564.4	616.6	258.2	36.1	1.000127
24500.0	397.5	-23.6	-41.1	16.1	554.8	615.5	259.	35.3	1.000125
25000.0	389.0	-24.5	-42.0	16.2			258.4	34.5	1.000123
25500.0	380.5	-25.3	-43.2	16.4	537.4	614.1	260.8	33.	1.000121
26000.0	372.7	-26.3	-44.3	16.6	528.9	610.4	261.6	32.4	1.000119
26500.0	364.8	-27.7	-45.4	16.7	520.6	608.7	264.0	32.5	1.000117
27000.0	357.1	-29.1	-46.5	16.9	512.4	607.0	266.4	32.6	1.000115
27500.0	349.5	-31.6	-47.5	19.1	504.4	605.3	268.9	32.7	1.000113
28000.0	342.1	-33.1	-48.6	19.3	496.5	603.6	271.2	32.8	1.000111
28500.0	334.8	-34.5	-49.7	19.4	488.3	601.8	273.1	32.7	1.000109
29000.0	327.8	-35.9	-50.8	19.6	481.2	600.1	275.1	33.1	1.000106
29500.0	320.8	-37.2	-51.9	19.8	473.7	598.4	277.2	34.0	1.000106
30000.0	314.0	-38.6	-53.0	19.9	466.3	596.7	278.3	34.9	1.000104
30500.0	307.2	-40.0	-56.2	14.0**	458.9	594.9	278.3	35.7	1.000102
31000.0	300.4	-41.3	-79.0	.7**	451.4	593.2	278.5	36.2	1.000101
31500.0	293.6	-42.7			443.8	591.4	279.1	36.3	1.000099
32000.0	287.0	-44.1			436.4	589.7	279.7	36.4	1.000097
32500.0	280.5	-45.4			429.0	587.9	280.7	36.7	1.000096
33000.0	274.1	-46.6			421.9	586.1	280.7	37.2	1.000094
33500.0	267.9	-48.2			414.8	584.3	280.7	38.2	1.000092
34000.0	261.8	-49.5			407.9	582.6	281.0	38.6	1.000091
34500.0	255.9	-50.9			401.1	580.8	281.8	38.2	1.000089
35000.0	250.1	-52.3			394.5	579.0	282.4	37.3	1.000088
35500.0	244.2	-53.5			387.3	577.3	282.7	35.8	1.000086
36000.0	238.3	-54.8			380.3	575.6	282.0	34.5	1.000085
36500.0	232.7	-56.1			373.4	574.0	280.0	33.5	1.000083
37000.0	227.1	-57.4			366.7	572.3	278.0	33.0	1.000082
37500.0	221.7	-58.6			360.1	570.6	276.5	32.8	1.000080
38000.0	216.4	-59.9			353.6	568.9	276.1	33.1	1.000079
38500.0	211.3	-61.2			347.3	567.2	276.9	33.7	1.000077
39000.0	206.2	-62.5			341.0	565.5	278.0	34.0	1.000076
39500.0	201.3	-63.7			334.9	563.7	279.4	34.0	1.000075
40000.0	196.4	-64.9			328.5	562.3	281.9	34.3	1.000073
40500.0	191.5	-65.9			322.0	560.8	284.8	35.0	1.000072
41000.0	186.8	-66.9			315.6	559.4	288.0	36.0	1.000070
41500.0	182.2	-68.0			309.3	558.0	292.0	37.8	1.000069
42000.0	177.7	-68.9			303.1	556.7	295.7	39.8	1.000068
42500.0	173.2	-66.8			292.5	559.6	297.9	40.3	1.000065
43000.0	169.0	-64.5			281.9	563.0	300.1	40.9	1.000063

** AT LEAST ONE ASSUMED RELATIVE HUMIDITY VALUE WAS USED IN THE INTERPOLATION.

UPPER AIR DATA
1030020206
WHITE SANDS

GEODETIC COORDINATES
32.40043 LAT DEG
106.37033 LON DEG

STATION ALTITUDE 3969.00 FEET MSL
14 APR. 64 0001 HRS MST
ASCENSION NO. 206

TABLE 6 Con't

GLOMERIC ALTITUDE MSL FEET	PRESSURE MILLIBARS	TEMPERATURE AIR DEGREES CENTIGRADE	REL. HUM. PERCENT	DENSITY GM/CUBIC METER	SPEED OF SOUND KNOTS	WIND DATA		INDEX OF REFRACTION
						DIRECTION DEGREES(TN)	SPEED KNOTS	
435.0.0	164.8	-63.9		274.5	563.5	295.5	39.9	1.000061
440.0.0	160.8	-63.8		267.5	563.7	287.7	38.7	1.000060
445.0.0	156.9	-64.3		261.6	563.1	278.1	39.3	1.000058
450.0.0	153.0	-65.1		256.2	561.9	268.5	41.4	1.000057
455.0.0	149.3	-66.0		251.0	560.7	266.7	43.1	1.000056
460.0.0	145.5	-67.2		246.2	559.1	269.5	44.0	1.000055
465.0.0	141.9	-68.3		241.4	557.6	273.9	44.7	1.000054
470.0.0	138.4	-67.8		234.8	558.2	280.0	45.6	1.000052
475.0.0	135.0	-67.4		228.5	558.9	285.2	47.0	1.000051
480.0.0	131.6	-66.9		222.3	559.5	288.5	48.7	1.000050
485.0.0	128.4	-66.4		216.3	560.1	291.0	50.3	1.000048
490.0.0	125.1	-67.7		212.2	558.4	290.3	51.3	1.000047
495.0.0	122.0	-69.1		208.3	556.5	289.6	52.3	1.000046
500.0.0	119.0	-70.1		204.1	555.1	288.5	49.7	1.000045
505.0.0	116.0	-68.6		197.6	557.1	287.2	47.3	1.000044
510.0.0	113.1	-67.2		191.3	559.1	287.4	50.6	1.000043
515.0.0	110.3	-66.0		185.5	560.7	287.6	54.1	1.000041
520.0.0	107.6	-66.0		180.9	560.7	286.5	66.8	1.000040
525.0.0	104.9	-66.0		176.5	560.7	285.8	79.5	1.000039
530.0.0	102.3	-66.0		172.1	560.7	286.4	72.0	1.000038
535.0.0	99.8	-66.0		167.8	560.8	287.7	59.9	1.000037
540.0.0	97.4	-65.3		163.2	561.6	289.8	45.3	1.000036
545.0.0	95.0	-64.7		158.7	562.5	294.4	29.5	1.000035
550.0.0	92.7	-64.0		154.4	563.3	298.2	24.1	1.000034
555.0.0	90.4	-63.4		150.1	564.2	298.3	25.9	1.000033
560.0.0	88.2	-62.5		145.9	565.4	299.9	25.9	1.000032
565.0.0	86.1	-61.3		141.6	567.0	303.4	24.1	1.000032
570.0.0	84.0	-60.2		137.4	568.6	302.2	22.2	1.000031
575.0.0	82.0	-59.0		133.4	570.1	291.2	20.5	1.000030
580.0.0	80.0	-57.6		129.5	571.7	279.4	19.2	1.000029
585.0.0	78.1	-58.6		126.8	570.6	267.5	17.4	1.000028
590.0.0	76.2	-59.3		124.5	569.0	253.5	16.4	1.000028
595.0.0	74.4	-61.1		122.2	567.4	246.4	13.7	1.000027
600.0.0	72.6	-62.3		119.9	565.7	236.3	11.2	1.000027
605.0.0	70.9	-63.5		117.7	564.1	221.4	9.2	1.000026
610.0.0	69.1	-63.7		115.0	563.8	201.5	8.1	1.000026
615.0.0	67.5	-62.9		111.8	564.9	180.7	7.8	1.000025
620.0.0	65.8	-62.1		108.7	566.0	162.5	8.0	1.000024
625.0.0	64.5	-61.3		105.6	567.1	147.5	8.5	1.000024
630.0.0	62.7	-61.1		102.9	567.5	137.7	7.9	1.000023

UPPER AIR DATA
 1030020206
 WHITE SANDS

STATION ALTITUDE 3989.00 FEET MSL
 12 APR. 84
 ASCENSION NO. 206

GEODETIC COORDINATES
 32.40043 LAT DEG
 106.37033 LON DEG

TABLE 6 Con't

GEOMETRIC ALTITUDE MSL FEET	PRESSURE MILLIBARS	TEMPERATURE AIP DEGRS CENTIGRADE	REL. HUM. PERCENT	DENSITY GM/CUBIC METER	SPEED OF SOUND KNOTS	WIND DATA		INDEX OF REFRACTION
						DIRECTION DEGREES(TN)	SPEED KNOTS	
63500.0	61.2	-61.1		100.5	567.3	126.7	7.6	1.000022
64000.0	59.7	-61.2		98.1	567.2	141.6	4.9	1.000022
64500.0	58.3	-61.3		95.8	567.0	183.7	3.2	1.000021
65000.0	56.9	-61.4		93.5	566.9	258.7	3.3	1.000021
65500.0	55.5	-61.5		91.3	566.8	294.3	6.8	1.000020
66000.0	54.2	-61.4		89.1	566.9	306.8	10.0	1.000020
66500.0	52.9	-60.3		86.5	568.3	317.1	12.1	1.000019
67000.0	51.6	-59.3		84.0	569.7	323.3	14.0	1.000019
67500.0	50.4	-58.2		81.6	571.2	319.0	11.9	1.000018
68000.0	49.2	-58.1		79.6	571.4	312.9	9.9	1.000018
68500.0	48.0	-58.3		77.8	571.0	313.5	8.2	1.000017
69000.0	46.8	-58.5		76.0	570.7	316.9	6.6	1.000017
69500.0	45.7	-58.7		74.3	570.4	322.9	6.0	1.000017
70000.0	44.7	-58.8		72.6	570.4	329.9	5.9	1.000016
70500.0	43.6	-58.5		70.8	570.8	339.1	5.7	1.000016
71000.0	42.6	-58.2		69.0	571.2	353.2	5.3	1.000015
71500.0	41.6	-57.9		67.3	571.6	7.4	5.3	1.000015
72000.0	40.6	-57.6		65.6	572.0	14.7	5.1	1.000015
72500.0	39.6	-57.3		64.0	572.4	22.1	5.1	1.000014
73000.0	38.7	-57.0		62.4	572.8	23.6	5.4	1.000014
73500.0	37.8	-56.7		60.8	573.2	23.6	5.6	1.000014
74000.0	36.9	-56.4		59.3	573.6	26.6	5.7	1.000013
74500.0	36.0	-56.1		57.8	574.0	33.1	5.5	1.000013
75000.0	35.2	-55.7		56.4	574.4	38.2	5.7	1.000013
75500.0	34.4	-55.4		55.0	574.8	37.0	7.2	1.000012
76000.0	33.6	-55.1		53.6	575.2	36.3	8.7	1.000012
76500.0	32.8	-54.8		52.3	575.6	34.7	10.6	1.000012
77000.0	32.0	-54.5		51.0	576.0	33.6	12.6	1.000011
77500.0	31.2	-54.2		49.7	576.4	37.6	13.2	1.000011
78000.0	30.5	-53.9		48.5	576.8	45.2	13.1	1.000011
78500.0	29.8	-53.7		47.3	577.2	51.2	13.1	1.000011
79000.0	29.1	-53.6		46.2	577.3	53.8	12.6	1.000010
79500.0	28.4	-53.5		45.1	577.4	56.7	12.2	1.000010
80000.0	27.6	-53.4		44.0	577.5	54.0	11.4	1.000010
80500.0	27.1	-53.3		43.0	577.6	49.1	10.7	1.000009
81000.0	26.5	-53.2		42.0	577.7	45.6	10.1	1.000009
81500.0	25.9	-53.1		41.0	577.8	50.1	10.1	1.000009
82000.0	25.3	-53.1		40.0	578.0	54.6	10.1	1.000009
82500.0	24.7	-53.0		39.1	578.1	50.9	9.5	1.000009
83000.0	24.1	-52.9		38.1	578.2	42.0	8.8	1.000008

UPPFR AIR DATA
 1030U70206
 WHITE SANDS
 TABLE 6 Con't

STATION ALTITUDE 3989.00 FEET MSL
 12 APP. 24 0001 HRS MST
 ASCENSION NO. 206

GEODETIC COORDINATES
 32.40043 LAT DEG
 106.37033 LON DEG

GEOMETRIC ALTITUDE MSL FEET	PRESSURE MILLIBARS	TEMPERATURE AIR DEGR FLS	DEWPOINT CENTIGRADE	REL. HUM. PERCENT	DENSITY GM/CUBIC METER	SPEED OF SOUND KNOTS	WIND DATA DIRECTION DEGREES(TN)	SPEED KNOTS	INDEX OF REFRACTION
83500.0	23.6	-52.5			37.2	578.6	31.0	8.4	1.000008
84000.0	23.0	-52.2			36.3	579.1	13.8	8.6	1.000008
84500.0	22.5	-51.9			35.4	579.5	358.9	9.6	1.000008
85000.0	22.0	-51.6			34.5	579.9	356.8	10.3	1.000008
85500.0	21.5	-51.3			33.7	580.3	2.5	10.7	1.000007
86000.0	21.0	-50.9			32.9	580.7	7.6	11.2	1.000007
86500.0	20.5	-50.6			32.1	581.1	359.0	12.9	1.000007
87000.0	20.0	-50.3			31.3	581.6	352.5	14.8	1.000007
87500.0	19.6	-50.1			30.5	581.9	348.1	16.4	1.000007
88000.0	19.1	-49.8			29.8	582.2	345.0	17.7	1.000007
88500.0	18.7	-49.5			29.1	582.6	342.4	19.0	1.000006
89000.0	18.3	-49.3			28.4	582.9			1.000006
89500.0	17.8	-49.0			27.7	583.2			1.000006
90000.0	17.4	-48.8			27.1	583.6			1.000006
90500.0	17.0	-48.5			26.4	583.9			1.000006
91000.0	16.7	-48.2			25.8	584.3			1.000006

STATION ALTITUDE 3969.00 FEET MSL
 12 APR. 54
 0001 MRS MST
 ASCENSION NO. 206

MANUATORY LEVELS
 1030020206
 WHITE SANDS

GEOGETIC COORDINATES
 32.60043 LAT DEG
 106.37033 LON DEG

TABLE 7

PRESSURE GEOPOTENTIAL		TEMPERATURE		REL. HUM.	WIND DATA		
MILLIBARS	FEET	AIR DEGREES	DEWPOINT CFNTIGRADE	PERCENT	DIRECTION DEGREES(TN)	SPEED KNOTS	
50.0	4781.	17.2	-8.0	17.	351.8	8.1	
40.0	6404.	13.6	-9.6	19.	338.8	15.5	
30.0	6233.	9.9	-9.9	24.	303.3	17.1	
20.0	10101.	6.2	-9.2	32.	276.2	22.7	
15.0	12083.	3.1	-17.4	20.	276.5	26.7	
10.0	14190.	-1.9	-20.0	23.	282.1	32.7	
5.0	16438.	-7.3	-23.2	27.	281.4	39.0	
0.0	16847.	-13.2	-27.0	30.	280.3	42.4	
4.0	21455.	-18.2	-34.2	23.	262.6	35.5	
3.0	24311.	-23.2	-40.8	18.	258.9	35.6	
2.0	27464.	-31.7	-47.5	19.	268.9	32.7	
1.0	30059.	-41.4			278.5	36.2	
0.5	34934.	-52.3			282.4	37.4	
0.2	39543.	-64.1			279.9	34.0	
0.1	42192.	-67.7			296.9	40.1	
0.0	45279.	-65.8			266.0	42.9	
0.0	48887.	-67.8			290.3	51.3	
0.0	53301.	-66.0			287.5	61.5	
0.0	57817.	-57.8			279.8	19.3	
0.0	60543.	-64.1			213.4	8.6	
0.0	63571.	-61.2			135.7	5.6	
0.0	67395.	-57.9			317.8	11.5	
0.0	72003.	-57.4			18.4	5.1	
0.0	78019.	-53.7			49.9	13.2	
0.0	81870.	-53.0			55.7	10.1	
0.0	86616.	-50.3			352.8	14.7	

** AT LEAST ONE ASSUMED RELATIVE HUMIDITY VALUE WAS USED IN THE INTERPOLATION.

STATION ALTITUDE 4010.40 FEET MSL
 14 APR. 84
 ASCENSION NO. 12

SIGNIFICANT LEVEL DATA
 1-J0220012
 NW 30

GEODETIC COORDINATES
 32.86497 LAT DEG
 106.49714 LONG DEG

TABLE 8

PRESSURE MILLIBARS	GEOMETRIC ALTITUDE MSL FEET	TEMPERATURE AIR DEGREES CENTIGRADE	REL. HUM. PERCENT
975.7	4010.4	11.8	20.0
970.6	4171.1	13.2	19.0
866.5	4371.4	13.9	18.0
850.0	4672.0	12.9	19.0
790.4	6823.8	9.8	18.0
751.1	8207.9	7.5	19.0
700.0	10104.2	4.9	31.0
666.5	11413.1	2.7	30.0
588.6	15561.6	-7.0	28.0
500.0	18813.2	-14.4	42.0
477.9	19437.2	-15.9	28.0
446.9	21590.1	-18.9	19.0
400.0	24268.7	-26.0	20.0
366.9	26311.4	-29.6	18.0
320.2	29449.0	-38.6	20.0
300.0	30911.7	-42.1	20.0
250.0	34877.0	-53.2	20.0
200.0	39488.8	-64.7	20.0
180.9	41493.1	-67.8	20.0
169.9	42760.6	-63.8	20.0
150.0	45262.5	-64.5	20.0
137.4	47018.9	-67.2	20.0
125.8	48778.6	-66.0	20.0
116.7	50722.8	-68.3	20.0
112.8	50949.2	-66.0	20.0
100.0	53374.0	-63.6	20.0
92.4	54976.3	-63.2	20.0
87.5	56086.0	-61.7	20.0
75.5	58074.9	-65.4	20.0
70.0	60000.6	-63.7	20.0
67.1	61464.4	-60.4	20.0
61.5	63233.0	-61.5	20.0
56.1	65154.5	-57.0	20.0
50.0	67543.1	-60.4	20.0
43.6	70371.9	-59.1	20.0

UPPER AIR DATA
 1030220012
 NW 30
 TABLE 9

STATION ALTITUDE 4010.40 FEET MSL
 12 APR. 84 0230 HRS MST
 ASCENSION NO. 12

GEOMETRIC ALTITUDE 4010.40 FEET MSL
 12 APR. 84 0230 HRS MST
 ASCENSION NO. 12

GEOMETRIC ALTITUDE 4010.40 FEET MSL
 12 APR. 84 0230 HRS MST
 ASCENSION NO. 12

GEOMETRIC ALTITUDE 4010.40 FEET MSL
 12 APR. 84 0230 HRS MST
 ASCENSION NO. 12

GEOMETRIC COORDINATES
 32.88497 LAT DEG
 106.49714 LON DEG

GEOMETRIC ALTITUDE MSL FEET	PRESSURE MILLIBARS	TEMPERATURE AIR DEGREES	TEMPERATURE JFMPOINT CENTIGRADE	REL. HUM. PERCENT	DENSITY GM/CUBIC METER	SPEED OF SOUND KNOTS	DIRECTION DEGREES(TN)	WIND DATA SPEED KNOTS	INDEX OF REFRACTION
4010.4	875.7	11.0	-10.4	20.0	1069.3	658.0	0	0	1.000251
4500.0	860.3	13.5	-10.0	18.4	1044.1	660.0	13.8	2.5	1.000246
5000.0	844.8	12.0	-10.4	18.9	1028.5	659.0	13.8	5.1	1.000242
5500.0	829.5	11.9	-11.2	18.7	1012.7	658.1	13.8	7.7	1.000238
6000.0	814.5	11.1	-12.0	18.4	997.2	657.2	13.9	10.2	1.000234
6500.0	799.8	10.3	-12.8	18.2	981.9	656.2	11.3	9.0	1.000229
7000.0	785.3	9.5	-13.5	18.1	966.8	655.3	4.4	6.1	1.000226
7500.0	771.0	8.7	-14.0	18.5	952.0	654.3	336.9	5.5	1.000222
8000.0	756.9	7.8	-14.4	18.8	937.4	653.4	323.1	6.7	1.000218
8500.0	743.0	7.1	-13.8	20.8	922.6	652.5	316.8	11.1	1.000216
9000.0	729.3	6.4	-12.6	24.0	907.7	651.8	304.5	16.6	1.000213
9500.0	715.9	5.7	-11.7	27.2	893.1	651.0	295.2	19.4	1.000211
10000.0	702.7	5.0	-10.9	30.3	878.7	650.2	287.7	22.3	1.000209
10500.0	689.7	4.2	-11.5	30.7	865.0	649.3	281.7	22.8	1.000205
11000.0	676.9	3.4	-12.4	30.3	851.6	648.3	289.1	23.6	1.000201
11500.0	664.3	2.5	-13.3	30.0	838.5	647.2	288.6	24.3	1.000198
12000.0	651.7	1.3	-14.4	29.7	826.2	645.8	286.8	24.9	1.000194
12500.0	639.3	.2	-15.5	29.5	814.0	644.4	283.8	25.5	1.000191
13000.0	627.2	-1.0	-16.7	29.2	802.1	643.0	280.0	26.7	1.000187
13500.0	615.3	-2.2	-17.8	29.0	790.3	641.6	289.1	28.7	1.000184
14000.0	603.6	-3.3	-18.9	28.8	778.7	640.2	288.6	31.1	1.000181
14500.0	592.2	-4.5	-20.0	28.5	767.4	638.8	286.8	34.0	1.000177
15000.0	581.0	-5.7	-21.1	28.3	756.1	637.4	283.8	35.6	1.000174
15500.0	569.9	-6.9	-22.2	28.0	745.1	635.9	280.0	36.5	1.000171
16000.0	558.8	-8.0	-22.5	29.9	733.7	634.6	276.0	37.2	1.000169
16500.0	547.9	-9.1	-22.7	34.0	722.4	633.2	274.1	37.8	1.000166
17000.0	537.2	-10.3	-23.0	34.2	711.4	631.9	274.4	38.3	1.000164
17500.0	526.6	-11.4	-23.3	36.3	700.5	630.5	275.5	38.9	1.000161
18000.0	516.2	-12.5	-23.7	38.5	689.8	629.1	279.5	40.7	1.000159
18500.0	506.2	-13.7	-24.2	40.7	679.2	627.7	281.3	41.9	1.000156
19000.0	496.3	-14.6	-25.3	39.7	668.4	626.5	280.7	42.1	1.000153
19500.0	486.4	-15.3	-27.7	33.4	656.8	625.7	278.5	41.1	1.000150
20000.0	476.7	-16.0	-26.4	27.7	645.6	624.8	275.0	39.5	1.000147
20500.0	467.1	-16.9	-24.9	24.9	634.9	623.7	273.7	39.5	1.000144
21000.0	457.7	-17.8	-24.2	22.2	624.4	622.6	273.3	40.0	1.000141
21500.0	448.5	-18.7	-26.3	19.5	614.0	621.5	273.0	40.1	1.000138
22000.0	439.4	-20.0	-37.5	19.2	604.5	619.9	274.7	40.0	1.000136
22500.0	430.4	-21.3	-36.5	19.3	595.2	618.3	275.6	40.0	1.000134
23000.0	421.6	-22.6	-39.6	19.5	586.1	616.7	276.4	41.8	1.000132
23500.0	412.9	-24.0	-40.6	19.7	577.2	615.0	276.7	43.0	1.000130

UPPER AIR DATA
1030220012
NW 30

STATION ALTITUDE 4010.40 FEET MSL
12 APR 64 0230 WRS MST
ASCENSION NO. 1c

GEODETIC COORDINATES
32.88497 LAT DEG
106.69714 LON DEG

TABLE 9 Con't

GEOMETRIC ALTITUDE MSL FEET	PRESSURE MILLIBARS	TEMPERATURE AIR DEGREE CENTIGRADE	REL. HUM. PERCENT	DENSITY GM/CUBIC METER	SPEED OF SOUND KNOTS	DIRECTION DEGREES(TN)	WIND DATA SPEED KNOTS	INDEX OF REFRACTION
2400.0	404.5	-25.3	19.9	568.6	613.4	276.9	43.7	1.000178
2450.0	396.1	-26.4	19.8	559.2	612.0	276.9	43.8	1.000175
2500.0	387.8	-27.3	19.3	549.4	610.9	275.6	44.4	1.000123
2550.0	379.7	-28.2	18.8	539.9	609.8	273.5	45.0	1.000121
2600.0	371.8	-29.1	18.3	530.5	608.7	268.7	45.9	1.000119
2650.0	363.9	-30.1	18.1	521.6	607.5	264.3	43.3	1.000117
2700.0	356.1	-31.6	18.4	513.5	605.5	260.4	43.0	1.000115
2750.0	348.5	-33.0	18.8	505.5	603.7	260.2	43.6	1.000113
2800.0	341.0	-34.4	19.1	497.6	601.9	260.9	44.4	1.000109
2850.0	333.7	-35.9	19.4	489.9	600.1	262.0	44.6	1.000108
2900.0	326.5	-37.3	19.7	482.3	598.3	263.3	44.6	1.000106
2950.0	319.5	-38.7	19.3**	474.7	596.5	265.1	44.3	1.000104
3000.0	312.4	-39.9	18.5**	467.7	595.0	267.3	44.1	1.000102
3050.0	305.6	-41.1	5.6**	458.7	593.4	269.7	43.9	1.000100
3100.0	298.8	-42.3		451.0	591.9	271.3	44.6	1.000099
3150.0	292.0	-43.7		443.4	590.1	272.5	45.3	1.000097
3200.0	285.4	-45.1		436.0	588.3	272.9	46.1	1.000095
3250.0	278.9	-46.5		428.7	586.4	273.4	46.8	1.000092
3300.0	272.5	-47.9		421.6	584.6	274.1	46.5	1.000091
3350.0	266.3	-49.3		414.6	582.8	275.4	46.4	1.000089
3400.0	260.3	-50.7		407.7	581.0	276.3	46.5	1.000088
3450.0	254.4	-52.1		401.0	579.2	277.0	46.8	1.000086
3500.0	248.5	-53.5		394.2	577.4	277.6	46.2	1.000085
3550.0	242.6	-54.8		386.9	575.7	276.3	45.2	1.000083
3600.0	236.8	-56.0		379.9	574.1	275.5	45.4	1.000082
3650.0	231.1	-57.2		372.9	572.4	274.9	45.2	1.000081
3700.0	225.6	-58.5		366.1	570.8	274.0	45.1	1.000080
3750.0	220.2	-59.7		359.5	569.1	273.1	45.1	1.000079
3800.0	214.9	-61.0		352.9	567.5	272.5	45.2	1.000077
3850.0	209.6	-62.2		346.5	565.8	276.1	45.5	1.000076
3900.0	204.8	-63.5		340.3	564.1	276.4	45.9	1.000074
3950.0	199.9	-64.7		334.1	562.4	277.2	46.3	1.000071
4000.0	194.9	-65.5		327.0	561.4	280.1	47.9	1.000070
4050.0	190.1	-66.3		320.1	560.4	284.0	49.3	1.000068
4100.0	185.4	-67.0		313.4	559.3	289.0	49.1	1.000066
4150.0	180.6	-67.8		306.7	558.3	292.2	48.4	1.000064
4200.0	176.4	-68.2		299.9	560.4	294.6	45.8	1.000062
4250.0	172.0	-68.6		293.4	562.6	293.0	44.6	1.000061
4300.0	167.8	-63.9		279.3	563.6	277.7	44.6	1.000061
4350.0	163.7	-64.0		272.7	563.4	277.8	44.6	1.000061

** AT LEAST ONE ASSUMED RELATIVE HUMIDITY VALUE WAS USED IN THE INTERPOLATION.

STATION ALTITUDE 4010.40 FEET MSL
 12 APR. 84 0230 HRS MST
 ASCENSION NO. 12

UPPER AIR DATA
 1030220012
 NW 30

GEODETIC COORDINATES
 32.88497 LAT DEG
 106.49714 LON DEG

TABLE 9 Con't

GEOMETRIC ALTITUDE MSL FEET	PRESSURE MILLIBARS	TEMPERATURE AIR DEGREES CENTIGRADE	REL. HUM. PERCENT	DENSITY GM/CUBIC METER	SPEED OF SOUND KNOTS	WIND DATA		INDEX OF REFRACTION
						DIRECTION DEGREES(TN)	SPEED KNOTS	
4400.0	159.7	-64.1		266.2	563.2	286.5	44.6	1.000059
4450.0	155.8	-64.3		259.8	563.0	282.7	45.8	1.000058
4500.0	152.0	-64.4		257.6	562.8	280.7	47.2	1.000056
4550.0	148.2	-64.9		247.9	562.2	280.6	48.4	1.000055
4600.0	144.6	-65.6		242.7	561.2	282.3	49.5	1.000054
4650.0	141.0	-66.4		237.6	560.2	287.6	50.7	1.000053
4700.0	137.5	-67.2		232.6	559.1	291.7	51.4	1.000052
4750.0	134.1	-66.9		225.5	559.5	294.9	51.5	1.000050
4800.0	130.8	-66.5		220.5	560.0	292.9	49.8	1.000049
4850.0	127.6	-66.2		214.7	560.5	290.0	50.2	1.000048
4900.0	124.4	-66.3		209.6	560.2	286.5	52.5	1.000047
4950.0	121.3	-67.1		205.1	559.2	286.6	56.0	1.000046
5000.0	118.3	-67.9		200.8	558.2	287.5	58.6	1.000045
5050.0	115.4	-67.5		195.5	558.6	290.1	58.7	1.000044
5100.0	112.5	-65.9		189.2	560.8	292.0	58.6	1.000042
5150.0	109.8	-65.5		184.1	561.4	293.7	58.9	1.000041
5200.0	107.1	-65.0		179.1	562.1	295.3	59.4	1.000040
5250.0	104.4	-64.5		174.3	562.8	297.1	57.7	1.000039
5300.0	101.9	-64.0		169.7	563.5	298.3	55.3	1.000038
5350.0	99.4	-63.6		165.2	564.0	298.6	52.3	1.000037
5400.0	97.0	-63.4		161.1	564.2	299.1	48.5	1.000036
5450.0	94.6	-63.3		157.1	564.3	299.8	44.2	1.000035
5500.0	92.3	-63.2		153.1	564.5	302.8	37.6	1.000034
5550.0	90.1	-62.5		148.9	565.4	307.0	30.5	1.000033
5600.0	87.9	-61.6		144.8	566.3	313.7	22.7	1.000032
5650.0	85.7	-62.2		141.6	565.8	320.3	15.2	1.000032
5700.0	83.6	-62.6		138.5	565.0	333.7	8.3	1.000031
5750.0	81.6	-63.5		135.6	564.2	327.0	2.6	1.000030
5800.0	79.6	-64.1		132.6	563.3	198.3	3.0	1.000030
5850.0	77.7	-64.7		129.8	562.5	210.7	8.6	1.000029
5900.0	75.8	-65.3		127.0	561.6	217.7	14.4	1.000028
5950.0	73.9	-64.9		124.7	562.2	224.0	20.3	1.000028
6000.0	72.1	-64.4		120.3	562.9	231.0	23.1	1.000027
6050.0	70.4	-63.8		117.1	563.7	241.0	24.5	1.000026
6100.0	68.6	-62.2		113.3	565.9	250.5	25.1	1.000025
6150.0	67.0	-60.4		109.7	568.2	256.3	24.5	1.000024
6200.0	65.4	-60.7		107.2	567.8	260.8	22.3	1.000024
6250.0	63.8	-61.0		104.8	567.4	266.5	20.7	1.000023
6300.0	62.3	-61.2		102.4	567.0	271.4	20.6	1.000023
6350.0	60.8	-60.7		99.7	567.5	278.8	20.4	1.000022

STATION ALTITUDE 4010.40 FEET MSL
 12 APR 84 U230 HRS MST
 ASCENSION NO. 12

UPPER AIR DATA
 1030220012
 W 30

GEODETIC COORDINATES
 32.88497 LAT DEG
 106.49714 LON DEG

TABLE 9 Con't

GEOMETRIC ALTITUDE MSL FEET	PRESSURE MILLIBARS	TEMPERATURE AIR DEGREES CENTIGRADE	REL. HUM. PERCENT	DENSITY GM/CUBIC METER	SPEED OF SOUND KNOTS	WIND DATA DIRECTION DEGREES(TN)	SPEED KNOTS	INDEX OF REFRACTION
6400.0	59.3	-59.7		96.8	569.1	286.3	19.6	1.000022
6450.0	57.9	-58.5		94.0	570.7	297.7	18.7	1.000021
6500.0	56.5	-57.4		91.2	572.3	314.0	19.0	1.000020
6550.0	55.2	-57.5		89.1	572.1	329.1	19.6	1.000020
6600.0	53.9	-58.2		87.1	571.2	342.9	19.1	1.000019
6650.0	52.6	-58.9		85.5	570.2	358.7	17.6	1.000019
6700.0	51.3	-59.6		83.7	569.3	13.9	14.1	1.000018
6750.0	50.1	-60.3		82.0	568.3	30.8	11.6	1.000018
6800.0	48.9	-60.2		80.0	568.5	48.2	9.8	1.000017
6850.0	47.7	-60.0		78.0	568.8	59.1	9.9	1.000017
6900.0	46.6	-59.7		76.1	569.1	62.9	10.9	1.000017
6950.0	45.5	-59.5		74.2	569.4			1.000017
7000.0	44.4	-59.3		72.3	569.7			1.000016

STATION ALTITUDE 4010.40 FEET MSL
 12 APR. 84 0230 MMS MST
 ASCENSION NO. 12

MANDATORY LEVELS
 1030220012
 NW 30

GEODETIC COORDINATES
 32.88497 LAT DEG
 106.49714 LON DEG

TABLE 10

MILLIBARS	PRESSURE GEOPOTENTIAL		TEMPERATURE		REL. HUM. PERCENT	WIND DATA	
	FEET	DEGREES	AIR DEGREES	DEWPOINT CENTIGRADE		DIRECTION DEGREES(TN)	SPEED KNOTS
850.0	4829.	12.9	-10.1	19.	13.8	4.2	
800.0	6490.	10.3	-12.8	18.	11.3	9.1	
750.0	8241.	7.4	-14.5	19.	329.5	8.4	
700.0	10095.	4.9	-10.8	31.	293.6	22.3	
650.0	12065.	1.2	-14.6	30.	282.4	24.9	
600.0	14150.	-3.7	-19.7	29.	288.0	32.1	
550.0	16291.	-8.9	-22.7	32.	274.6	17.7	
500.0	18588.	-16.4	-24.4	42.	281.0	42.0	
450.0	21189.	-18.6	-35.9	20.	273.7	40.1	
400.0	24230.	-60.0	-42.2	20.	276.9	43.8	
350.0	27363.	-32.7	-48.5	19.	260.1	43.5	
300.0	30852.	-62.1			271.0	44.4	
250.0	34803.	-53.2			277.0	46.7	
200.0	39396.	-64.7			276.8	45.9	
175.0	42050.	-65.7			293.0	49.0	
150.0	45144.	-64.5			279.9	47.8	
125.0	48769.	-66.2			267.3	51.9	
100.0	53213.	-63.6			298.5	53.2	
80.0	57721.	-63.9			184.4	1.8	
70.0	60397.	-63.7			243.6	24.7	
60.0	63537.	-60.3			261.7	20.2	
50.0	67294.	-60.4			31.2	11.5	

** AT LEAST ONE ASSUMED RELATIVE HUMIDITY VALUE WAS USED IN THE INTERPOLATION.

STATION ALTITUDE 4751.00 FEET MSL
 14 APR. 84 0407 HRS MST
 ASCENSION NO. 36

SIGNIFICANT LEVEL DATA
 1730000335
 JALLEN

GEODETIC COORDINATES
 33.16712 LAT DEG
 106.69511 LONG DEG

TABLE II

PRESSURE MILLIBARS	GEOMETRIC ALTITUDE MSL FEET	TEMPERATURE AIR DEGREES CENTIGRADE	REL. HUM. PERCENT
974.2	4051.0	-13.0	15.0
566.6	4550.9	-11.5	17.0
570.0	4622.9	-11.2	17.0
325.8	5860.3	-12.5	16.0
299.7	6496.7	-15.1	17.0
281.2	7170.5	-15.8	17.0
269.5	7539.3	-15.8	16.0
227.3	9045.8	6.7	17.0
202.0	10022.2	4.9	19.0
173.5	11121.0	2.2	34.0
150.2	12142.2	-4.2	15.0
150.3	12910.7	-8.4	38.0
552.6	16263.3	-9.1	33.0
505.2	18273.9	-14.1	48.0
500.0	18771.1	-14.8	46.0
683.9	19593.7	-16.3	37.0
476.6	19990.2	-16.4	29.0
461.6	20758.7	-17.9	26.0
431.3	21474.8	-22.2	32.0
412.5	23481.3	-24.8	38.0
400.0	24271.4	-26.3	34.0
373.6	25472.6	-29.0	26.0
347.8	27949.4	-34.5	21.0
322.2	30252.3	-37.5	19.0
300.0	31058.2	-42.1	
264.9	33585.1	-49.7	
250.0	34823.6	-53.1	
222.8	37274.2	-59.3	
200.0	39478.5	-63.8	
178.1	41758.3	-68.0	
166.2	43147.2	-62.2	
161.9	43811.3	-51.5	
150.0	45273.0	-63.8	
155.2	47174.3	-65.3	
155.1	48570.5	-66.0	
114.7	50673.2	-65.4	
100.0	51385.0	-65.5	
92.2	54943.5	-65.2	
84.0	57371.6	-63.2	
79.0	59095.3	-65.4	

STATION ALTITUDE 6051.00 FEET MSL
 12 APR. 84 J467 HRS MST
 ASCENSION NO. 36

SIGNIFICANT LEVEL DATA
 1030070934
 JALLEN

TABLE 11 Con't

PRESSURE MILLIBARS	GLOMETRIC ALTITUDE MSL FEET	TEMPERATURE		REL. HUM. PERCENT
		AIR DEGREES CENTIGRADE	DEWPOINT CENTIGRADE	
76.8	59190.7	-62.4		
70.0	60542.2	-62.4		
68.5	61986.0	-60.2		
62.9	6743.7	-59.9		
56.7	6520.7	-61.7		
52.0	64649.5	-50.9		
50.0	67441.5	-57.6		
46.5	69977.3	-57.0		
41.7	7147.2	-58.8		
40.0	77115.1	-56.7		
34.6	75153.0	-56.9		
30.0	79157.3	-54.5		
25.7	80671.7	-55.2		
22.0	84753.3	-50.7		

GEODETIC COORDINATES
 33.16712 LAT DEG
 106.49511 LON DEG

STATION ALTITUDE 4757.00 FEET MSL
 12 APR 64
 ASCENSION NO. 76

UPPER AIR DATA
 173707036
 JALLEN

GEODETIC COORDINATES
 33.16712 LAT DEG
 106.49511 LON DEG

TABLE 12

GEOMETRIC ALTITUDE MSL FEET	PRESSURE MILLIBARS	TEMPERATURE		REF. HUM. PERCENT	DENSITY GM/CUBIC METER	SPEED OF SOUND KNOTS	WIND DATA		INDEX OF REFRACTION
		AIR DEGREES	DWPOINTY CENTIGRADE				DIRECTION DEGREES(TV)	SPEED KNOTS	
4651.0	674.2	12.0	-13.0	16.0	1067.0	658.2	250.0	7.8	1.000248
4500.0	660.0	13.0	-11.5	17.0	1046.1	659.3	265.3	8.5	1.000275
5000.0	844.6	13.1	-11.5	16.8	1026.5	659.5	278.9	9.8	1.000240
5500.0	829.4	12.7	-11.4	16.1	1009.8	659.0	288.7	11.6	1.000236
6000.0	814.4	10.7	-13.7	16.5	998.4	656.7	295.8	13.6	1.000232
6500.0	799.6	8.5	-15.1	17.0	989.1	654.1	301.4	15.9	1.000229
7000.0	785.0	7.9	-15.6	17.0	972.3	653.4	305.8	18.4	1.000225
7500.0	770.6	8.5	-15.8	16.1	953.3	654.1	310.7	19.8	1.000221
8000.0	756.5	8.0	-16.0	16.3	937.5	653.5	318.4	18.2	1.000217
8500.0	742.6	7.4	-16.3	16.6	921.4	652.8	323.5	17.5	1.000213
9000.0	729.0	6.8	-16.6	17.0	906.5	652.1	317.8	18.5	1.000210
9500.0	715.6	5.9	-16.6	17.9	892.5	651.1	308.4	19.1	1.000207
10000.0	702.4	5.1	-16.7	15.6	878.8	650.1	295.3	19.9	1.000204
10500.0	689.4	3.6	-14.4	24.9	866.1	648.7	292.9	21.7	1.000203
11000.0	676.6	2.5	-12.4	32.2	853.9	647.3	274.5	26.0	1.000202
11500.0	663.8	1.4	-13.6	31.7	841.3	645.9	273.0	25.3	1.000198
12000.0	651.3	0.3	-15.7	28.8	829.7	644.6	274.1	25.2	1.000194
12500.0	639.0	-0.7	-17.9	25.8	816.5	643.3	275.8	24.6	1.000189
13000.0	626.9	-1.8	-20.2	22.8	804.2	642.0	277.1	23.6	1.000185
13500.0	615.1	-2.8	-22.7	19.8	792.2	640.7	278.7	24.8	1.000182
14000.0	603.5	-3.9	-25.4	16.8	780.4	639.4	280.2	26.9	1.000178
14500.0	591.9	-5.0	-24.2	20.5	768.7	638.1	281.3	29.8	1.000176
15000.0	580.5	-5.4	-22.3	26.7	757.2	636.7	282.7	32.6	1.000174
15500.0	569.3	-7.4	-20.9	32.9	745.8	635.3	280.8	33.9	1.000172
16000.0	558.3	-9.6	-20.7	26.7	734.4	633.9	279.9	35.2	1.000170
16500.0	547.4	-9.6	-22.3	34.6	723.2	632.6	280.0	35.7	1.000167
17000.0	536.7	-10.8	-22.3	38.0	712.0	631.3	280.7	38.2	1.000164
17500.0	526.1	-11.9	-22.3	41.4	701.1	629.9	281.8	41.5	1.000162
18000.0	515.6	-13.0	-24.5	44.8	690.3	628.6	282.1	43.3	1.000159
18500.0	505.7	-14.2	-24.8	47.8	679.7	627.2	282.0	44.6	1.000157
19000.0	495.6	-15.4	-24.8	42.6	668.9	625.9	280.9	46.1	1.000154
19500.0	485.7	-16.1	-27.1	26.0	658.0	624.7	279.2	46.1	1.000150
20000.0	476.0	-16.4	-30.3	28.9	646.7	624.3	279.4	45.4	1.000147
20500.0	466.5	-17.4	-31.8	27.0	635.2	623.1	279.4	46.4	1.000144
21000.0	457.1	-18.5	-32.9	26.9	625.1	621.7	280.4	46.8	1.000141
21500.0	447.8	-19.6	-32.3	26.7	615.4	620.2	281.4	46.6	1.000137
22000.0	438.7	-21.1	-32.9	26.5	604.2	618.6	281.9	45.4	1.000137
22500.0	429.5	-22.4	-34.4	22.5	594.2	617.0	282.0	44.5	1.000135
23000.0	420.9	-23.6	-34.6	25.3	587.5	615.5	281.0	45.4	1.000133
23500.0	412.3	-24.6	-35.0	27.9	579.2	614.5	281.4	47.0	1.000133

UPPER AIR DATA
 10300036
 JALLEN
 TABLE 12 Con't

STATION ALTITUDE 4051.00 FEET MSL
 14 APR. 64
 3400 HRS MST
 ASCENSION NO. 36

GEODETIC COORDINATES
 33.16712 LAT DEG
 106.49511 LON DEG

GEOMETRIC ALTITUDE MSL FEET	PRESSURE MILLIBARS	AIR TEMPERATURE DEGREES CENTIGRADE	TEMPERATURE DEGREE POINT	REL. HUM. PERCENT	DENSITY GM/CUBIC METER	SPEED OF SOUND KNOTS	WIND DATA DIRECTION DEGREES(TN)	SPEED KNOTS	INDEX OF REFRACTION
2600.0	403.7	-25.9	-76.7	75.2	568.5	612.7	280.4	48.4	1.000126
2650.0	395.3	-26.9	-78.5	72.2	559.1	611.6	278.8	49.7	1.000126
2700.0	387.1	-28.0	-80.4	29.0	549.9	610.0	277.0	51.0	1.000124
2750.0	379.0	-29.1	-82.4	25.9	540.8	608.7	275.8	52.4	1.000121
2800.0	370.9	-30.2	-83.7	24.9	531.7	607.3	274.8	53.4	1.000119
2850.0	363.0	-31.3	-85.1	23.9	522.8	605.9	274.4	52.6	1.000117
2900.0	355.3	-32.4	-86.4	22.9	514.0	604.5	273.0	52.5	1.000115
2950.0	347.7	-33.5	-87.8	21.9	505.4	603.2	271.4	52.9	1.000113
3000.0	340.3	-34.6	-89.1	21.0	496.9	601.8	270.1	54.0	1.000111
3050.0	333.0	-35.8	-90.5	20.2	488.7	600.2	268.8	55.5	1.000109
3100.0	325.8	-37.0	-91.9	19.4	480.5	598.7	268.5	56.2	1.000107
3150.0	318.7	-38.3	-93.5	16.1**	472.7	597.0	268.8	56.3	1.000106
3200.0	311.7	-39.7	-95.3	16.2**	465.1	595.3	269.0	56.0	1.000104
3250.0	304.8	-41.1	-96.9	4.2**	457.5	593.5	269.2	55.4	1.000102
3300.0	298.1	-42.5			450.2	591.7	269.0	55.0	1.000100
3350.0	291.3	-43.9			442.7	589.9	268.5	54.6	1.000099
3400.0	284.8	-45.3			435.4	588.1	268.4	55.0	1.000097
3450.0	278.3	-46.7			428.2	586.3	268.2	55.8	1.000095
3500.0	272.1	-48.1			421.1	584.5	268.4	55.8	1.000094
3550.0	265.9	-49.5			414.2	582.7	268.6	55.7	1.000092
3600.0	259.8	-50.9			407.1	580.9	269.1	54.7	1.000091
3650.0	253.8	-52.2			400.2	579.1	269.4	53.5	1.000089
3700.0	247.9	-53.6			393.3	577.3	270.4	52.9	1.000086
3750.0	242.0	-54.8			386.2	575.6	271.2	52.3	1.000084
3800.0	236.3	-56.1			379.4	573.9	272.4	52.1	1.000084
3850.0	230.6	-57.4			372.5	572.2	273.5	51.9	1.000083
3900.0	225.3	-58.7			365.7	570.5	274.8	51.8	1.000082
3950.0	219.9	-59.8			359.2	569.0	276.2	52.1	1.000082
4000.0	214.6	-60.9			352.2	567.6	277.7	53.0	1.000078
4050.0	209.4	-61.9			345.3	566.3	279.2	54.2	1.000077
4100.0	204.3	-62.9			338.4	564.9	280.7	55.4	1.000075
4150.0	199.4	-63.9			331.7	563.5	282.2	55.2	1.000074
4200.0	194.5	-64.9			325.2	562.3	283.9	55.7	1.000072
4250.0	189.7	-65.7			318.5	561.1	285.4	57.1	1.000071
4300.0	185.0	-66.6			312.0	559.9	286.9	57.5	1.000069
4350.0	180.4	-67.5			305.7	558.6	287.8	57.4	1.000068
4400.0	176.0	-67.8			299.4	559.4	288.4	57.6	1.000066
4450.0	171.6	-64.9			293.1	562.2	288.7	56.7	1.000064
4500.0	167.4	-62.3			286.8	565.0	288.7	55.3	1.000062
4550.0	163.3	-61.8			280.4	566.4	287.0	58.9	1.000060

** AT LEAST ONE ASSUMED RELATIVE HUMIDITY VALUE WAS USED IN THE INTERPOLATION.

STATION ALTITUDE 4751.00 FEET MSL
 12 APR 64 0607 HRS MST
 SECTION NO. 73

UPPER AIR DATA
 1050J0035
 JALLFH

GEODETIC COORDINATES
 37.15712 LAT DEG
 -04.69511 Lon DEG

TABLE 12 Con't

GEOMETRIC ALTITUDE MSL FEET	PRESSURE MILLIBARS	AIR TEMPERATURE DEGREES CENTIGRADE	REL. HUM. PERCENT	DENSITY GM/CUBIC METER	SPEED OF SOUND KNOTS	WIND DIRECTION DEGREES(TV)	WIND SPEED KNOTS	INDEX OF REFRACTION
4400.0	159.4	-62.1	263.0	566.0	287.1	62.4	1.000059	
4450.0	155.5	-62.8	257.5	565.1	286.4	67.4	1.000047	
4500.0	151.7	-63.5	252.1	564.1	286.5	69.2	1.000056	
4550.0	148.0	-64.1	246.6	563.3	287.6	67.7	1.000055	
4600.0	144.4	-64.6	241.2	562.6	290.0	64.4	1.000054	
4650.0	140.8	-65.1	235.8	561.9	293.2	60.3	1.000053	
4700.0	137.4	-65.6	230.6	561.2	295.3	57.4	1.000051	
4750.0	134.0	-65.8	225.2	560.9	297.2	54.8	1.000050	
4800.0	130.7	-65.9	219.7	560.8	295.8	53.4	1.000049	
4850.0	127.5	-65.0	214.3	560.8	294.4	52.5	1.000048	
4900.0	124.3	-65.2	209.3	560.5	293.1	53.7	1.000047	
4950.0	121.2	-66.9	204.7	559.5	292.0	55.1	1.000046	
5000.0	118.2	-67.6	200.3	558.6	292.9	56.3	1.000045	
5050.0	115.3	-68.3	196.0	557.6	293.8	57.5	1.000044	
5100.0	112.4	-69.0	190.9	558.0	295.0	57.6	1.000043	
5150.0	109.7	-67.2	185.7	558.7	296.7	57.8	1.000041	
5200.0	106.9	-67.0	180.7	559.4	297.6	55.5	1.000040	
5250.0	104.3	-66.5	175.8	560.1	299.1	53.1	1.000039	
5300.0	101.7	-65.9	171.0	560.8	300.0	47.5	1.000038	
5350.0	99.2	-65.6	166.4	561.3	301.1	41.8	1.000037	
5400.0	96.7	-65.4	162.2	561.5	300.5	36.8	1.000036	
5450.0	94.4	-65.3	158.2	561.6	299.7	31.8	1.000035	
5500.0	92.0	-65.2	154.2	561.9	300.7	29.2	1.000034	
5550.0	89.8	-64.4	149.9	562.8	301.9	26.6	1.000033	
5600.0	87.6	-63.7	145.7	563.8	302.6	21.5	1.000032	
5650.0	85.5	-63.4	141.9	564.3	302.8	16.4	1.000032	
5700.0	83.4	-64.0	138.9	563.4	283.4	10.7	1.000031	
5750.0	81.3	-64.6	135.9	562.5	242.4	8.3	1.000030	
5800.0	79.3	-65.3	133.0	561.7	231.7	12.5	1.000030	
5850.0	77.4	-64.3	129.1	563.0	227.1	15.8	1.000029	
5900.0	75.5	-62.9	125.1	564.9	234.9	17.8	1.000028	
5950.0	73.7	-62.4	121.8	565.5	241.5	18.9	1.000027	
6000.0	71.9	-62.4	118.8	565.6	249.1	15.3	1.000026	
6050.0	70.1	-62.4	115.9	565.6	259.1	16.0	1.000026	
6100.0	68.5	-60.2	112.0	568.5	269.5	11.7	1.000025	
6150.0	66.9	-60.1	109.3	568.6	234.0	9.9	1.000024	
6200.0	65.2	-60.0	106.6	568.7	293.7	9.3	1.000024	
6250.0	63.6	-59.9	104.7	568.9	307.3	7.1	1.000023	
6300.0	62.1	-60.1	101.5	568.6	324.2	6.2	1.000023	
6350.0	60.6	-60.5	98.3	568.1	345.8	6.0	1.000022	

UPPER AIR DATA
 103003335
 JALLEN

STATION ALTITUDE 4051.00 FEET MSL
 12 APR. R. 0400 HRS MST
 ASCENSION NO. 16

GEODETIC COORDINATES
 33.16712 LAT DEG
 106.49511 LON DEG

TABLE 12 Con't

GEOMETRIC ALTITUDE MSL FEET	PRESSURE MILLIBARS	TEMPERATURE °F	REL. HUM. PERCENT	DENSITY GM/CUBIC METER	SPEED OF SOUND KNOTS	WIND DATA		INDEX OF REFRACTION
						DIRECTION DEGREES(TN)	SPEED KNOTS	
5400.0	59.2	-50.9	77.1	567.6	4.7	6.9	1.000072	
5450.0	57.7	-61.3	95.0	567.1	18.7	8.4	1.000071	
5500.0	56.4	-61.7	92.8	566.5	21.4	9.3	1.000071	
5550.0	55.0	-51.4	90.5	565.9	27.7	10.3	1.000070	
5600.0	53.7	-61.2	89.2	567.2	27.9	17.1	1.000070	
5650.0	52.4	-60.9	86.1	567.6	28.7	10.0	1.000019	
5700.0	51.1	-59.4	83.3	569.5	28.5	9.8	1.000019	
5750.0	49.9	-57.6	80.7	572.0	29.2	9.6	1.000018	
5800.0	48.7	-57.4	79.7	572.2	29.4	9.5	1.000018	
5850.0	47.6	-57.2	76.7	572.5	29.2	9.4	1.000017	
5900.0	46.4	-57.0	74.9	572.7	28.6	9.4	1.000017	
5950.0	45.3	-57.4	73.2	572.2	27.6	9.2	1.000016	
6000.0	44.3	-57.8	71.5	571.7	28.1	9.2	1.000016	
6050.0	43.2	-58.2	70.1	571.2	35.0	9.7	1.000016	
6100.0	42.2	-58.6	69.5	570.6	41.2	10.4	1.000015	
6150.0	41.2	-59.2	66.9	571.2	50.2	11.9	1.000015	
6200.0	40.2	-59.0	64.8	572.8	57.1	13.6	1.000014	
6250.0	39.3	-55.7	63.2	573.1	57.9	14.0	1.000014	
6300.0	38.3	-55.2	61.7	573.1	56.1	13.2	1.000014	
6350.0	37.4	-56.8	60.3	573.0	55.8	13.9	1.000013	
6400.0	36.5	-55.8	58.9	573.0	57.6	14.4	1.000013	
6450.0	35.7	-56.9	57.5	573.0	59.3	15.0	1.000013	
6500.0	34.9	-55.9	56.1	572.9	62.7	15.8	1.000013	
6550.0	34.0	-55.6	54.8	573.3	64.8	16.7	1.000012	
6600.0	33.2	-56.2	53.4	573.9	62.0	15.8	1.000012	
6650.0	32.5	-55.8	52.0	574.3	58.9	14.3	1.000012	
6700.0	31.7	-55.4	50.7	574.8	55.5	13.5	1.000011	
6750.0	31.0	-55.3	49.4	575.4	54.3	13.5	1.000011	
6800.0	30.2	-54.6	48.2	575.9	52.9	13.4	1.000011	
6850.0	29.5	-54.6	47.1	575.9	44.0	11.9	1.000010	
6900.0	28.8	-54.7	46.0	575.7	34.9	10.8	1.000010	
6950.0	28.2	-54.9	44.9	575.5	6.4	10.8	1.000010	
7000.0	27.5	-55.0	43.9	575.4	324.2	18.6	1.000010	
7050.0	26.9	-55.1	42.9	575.2	311.4	29.1	1.000010	
7100.0	26.2	-54.8	41.8	575.7	313.5	30.5	1.000009	
7150.0	25.6	-54.2	40.8	575.4	317.0	30.2	1.000009	
7200.0	25.0	-53.7	39.7	577.1	323.2	28.3	1.000009	
7250.0	24.5	-53.6	39.7	577.8	332.0	21.5	1.000009	
7300.0	23.9	-52.6	37.7	578.5	4.7	17.6	1.000008	
7350.0	23.3	-52.1	36.8	579.3			1.000008	

STATION ALTITUDE 4051.00 FEET MSL
 12 APR. 64 0600 HRS MST
 ASCENSION NO. 76

UPPER AIR DATA
 1030070036
 JALLEN

GEODETIC COORDINATES
 33.16712 LAT DEG
 106.49511 LONG DEG

TABLE 12 Con't

GEOMETRIC ALTITUDE	PRESSURE	TEMPERATURE AIP	REL. HUM. PERCENT	DENSITY GM/CUBIC METER	SPEED OF SOUND KNOTS	WIND DATA DIRECTION DEGREES(TV)	SPEED KNOTS	INDEX OF REFRACTION
8400.0	22.8	-51.5		35.8	580.0			1.000008
8450.0	22.3	-51.0		34.9	580.7			1.000008

STATION ALTITUDE 6751.00 FEET MSL
 12 APR. 64 0607 WRS MST
 ASCENSION NO. 36

MANDATORY LEVELS
 1030070736
 JALLEN
 TABLE 13

GEODETIC COORDINATES
 33.16712 LAT DEG
 106.69511 LON DEG

PRESSURE GEOPOTENTIAL		TEMPERATURE		REL. HUM.		WIND DATA	
MILLIBARS	FEET	AIR DEGREES CENTIGRADE	DEWPOINT CENTIGRADE	PERCENT	DIRECTION DEGREES(TM)	SPEED KNOTS	
850.0	4821.	13.3	-11.7	17.	274.5	9.3	
830.0	6487.	8.5	-15.1	17.	301.3	15.8	
750.0	6229.	7.7	-16.1	16.	322.0	17.5	
730.0	10087.	4.9	-16.7	19.	293.1	20.2	
650.0	12049.	.2	-15.9	28.	274.3	25.1	
500.0	14135.	-4.2	-26.1	15.	280.6	27.7	
550.0	16763.	-9.4	-22.3	34.	280.0	36.3	
700.0	18754.	-14.4	-23.8	46.	281.4	44.3	
650.0	21352.	-19.5	-33.2	28.	281.5	47.0	
600.0	24163.	-26.3	-37.4	34.	279.9	49.0	
550.0	27307.	-33.1	-47.4	22.	272.0	52.8	
400.0	30799.	-42.1			269.2	55.1	
250.0	34750.	-53.1			270.0	53.1	
200.0	39347.	-63.8			282.0	56.1	
175.0	42004.	-66.5			288.6	57.4	
150.0	45115.	-63.8			287.0	68.6	
125.0	48757.	-65.0			293.4	53.4	
100.0	53174.	-65.6			300.6	43.9	
90.0	57648.	-65.1			234.9	10.8	
70.0	60341.	-62.4			250.3	13.9	
50.0	63494.	-60.7			353.5	6.3	
50.0	67215.	-57.6			29.1	9.6	
40.0	71835.	-56.7			58.1	13.9	
30.0	77822.	-54.5			51.1	13.0	
25.0	81552.	-53.7			322.7	28.6	

** AT LEAST ONE ASSUMED RELATIVE HUMIDITY VALUE WAS USED IN THE INTERPOLATION.

STATION ALTITUDE 5989.00 FEET MSL
 14 APR. 84
 USCGC WRS 457
 ASCENSION NO. 207

SIGNIFICANT LEVEL DATA

1020070207
 WHITE SANDS

TABLE 14

GEODEIC COORDINATES
 32.63043 LAT DEG
 106.37033 LON DEG

PRESSURE MILLIBARS	GEOMETRIC ALTITUDE FEET	AIR TEMPERATURE DEGREES CENTIGRADE	DEWPOINT TEMPERATURE DEGREES CENTIGRADE	REL. HUM. PERCENT
577.5	3799.0	12.7	-10.5	19.0
559.7	4246.2	12.2	-10.7	19.0
550.0	4394.2	12.2	-10.7	19.3
725.5	6929.8	10.7	-11.9	19.0
729.7	7041.0	6.6	-13.6	22.3
700.0	7362.5	4.3	-9.4	30.0
509.2	11376.9	2.1	-17.7	21.0
655.5	11330.5	1.5	-16.3	25.0
541.1	14251.0	-7.7	-23.6	31.0
515.9	17064.2	-13.0	-21.9	47.0
500.0	18260.3	-14.9	-23.7	47.0
444.9	21722.3	-20.1	-33.5	29.0
300.0	24272.2	-26.1	-40.2	73.0
227.9	26922.4	-32.3	-45.6	25.0
243.9	27325.4	-34.1	-47.5	24.0
213.8	29914.6	-39.1	-52.6	22.0
200.0	30922.9	-42.2		
200.0	34895.3	-52.3		
228.4	36799.8	-57.1		
200.0	39534.1	-62.4		
192.0	40360.5	-64.4		
157.2	43167.5	-61.4		
150.1	43378.7	-63.0		
115.9	50564.0	-67.0		
108.7	51047.9	-64.9		
100.0	53525.1	-65.5		
56.8	56352.0	-67.7		
70.0	67704.6	-60.1		
56.8	65032.2	-53.0		
52.1	66023.5	-54.6		
50.0	67676.5	-58.2		
47.6	67794.5	-56.3		
40.4	72147.2	-56.0		
30.0	79456.7	-52.5		
27.6	8136.7	-53.6		
24.1	87141.3	-50.6		
21.5	88671.7	-51.0		
20.0	87156.7	-49.3		
16.6	94173.3	-43.6		
10.0	103551.1	-42.7		

UPPER AIR DATA
 1750020207
 WHITE SANDS

STATION ALTITUDE 3969.00 FEET MSL
 14 APR. 84 0545 HRS MST
 ASCENSION NO. 207

GEODETIC COORDINATES
 37.40043 LAT DEG
 106.57037 LON DEG

TABLE 15

GLOMERIC ALTITUDE MSL FEET	PRESSURE MILLIBARS	TEMPERATURE		REL. HUM. PERCENT	DENSITY GM/CUBIC METER	SPEED OF SOUND		WIND DATA		INDEX OF REFRACTION
		AIR DEGREES CENTIGRADE	DEWPOINT CENTIGRADE			KNOTS	FEET	DIRECTION DEGREES(TN)	KNOTS	
3969.0	877.5	12.7	-10.3	19.0	1068.1	659.1	30.0	9.9	1.000251	
4000.0	877.1	12.7	-10.3	19.0	1067.8	659.0	29.9	9.9	1.000251	
4100.0	861.3	12.2	-10.7	19.0	1050.3	658.5	24.9	11.3	1.000247	
4200.0	843.3	12.1	-10.6	19.0	1031.7	658.4	20.9	12.6	1.000242	
4300.0	830.5	11.7	-11.1	19.0	1014.4	657.9	17.7	14.3	1.000238	
4400.0	815.5	11.4	-11.4	19.0	997.3	657.5	15.3	12.4	1.000234	
4500.0	800.8	11.0	-11.7	19.0	980.5	657.1	10.7	7.0	1.000230	
4600.0	786.3	10.6	-12.0	19.1	964.3	656.6	358.9	5.4	1.000226	
4700.0	771.9	9.9	-12.3	19.8	950.0	655.5	344.1	5.3	1.000225	
4800.0	757.6	8.6	-12.7	20.5	935.9	654.3	335.	9.0	1.000219	
4900.0	744.	7.7	-13.1	21.2	922.2	653.2	324.7	10.0	1.000216	
5000.0	731.6	6.7	-13.5	21.9	908.7	652.1	308.4	11.0	1.000215	
5100.0	717.7	5.5	-13.9	22.2	895.7	650.9	296.1	14.7	1.000212	
5200.0	703.7	4.5	-14.2	22.2	881.3	649.8	287.9	18.0	1.000211	
5300.0	693.7	3.6	-14.7	21.4	869.1	648.6	283.7	21.3	1.000206	
5400.0	677.8	2.7	-15.3	25.0	855.1	647.4	279.7	23.9	1.000200	
5500.0	665.	1.9	-17.4	24.3	841.7	646.4	275.9	24.1	1.000195	
5600.0	652.7	1.5	-18.5	25.1	827.8	645.7	274.5	23.5	1.000193	
5700.0	640.2	1.1	-17.2	25.7	815.3	644.3	276.8	21.6	1.000190	
5800.0	628.0	-1.0	-17.9	26.5	803.1	643.0	281.1	21.0	1.000187	
5900.0	616.0	-2.1	-18.6	26.9	791.1	641.6	285.7	21.9	1.000183	
6000.0	604.2	-3.2	-19.3	27.5	779.2	640.3	284.3	22.5	1.000180	
6100.0	592.7	-4.4	-20.0	28.1	767.6	638.9	282.8	24.1	1.000176	
6200.0	581.4	-5.5	-20.5	28.8	756.1	637.6	280.4	25.3	1.000175	
6300.0	570.3	-6.6	-1.5	29.4	744.3	636.2	278.9	29.5	1.000172	
6400.0	559.4	-7.9	-2.3	30.0	733.7	634.9	278.5	30.5	1.000169	
6500.0	548.7	-8.9	-3.0	30.6	723.8	633.5	278.6	32.1	1.000165	
6600.0	538.1	-10.1	-3.3	32.6	712.1	632.1	279.0	33.1	1.000164	
6700.0	527.6	-11.5	-3.5	39.5	701.8	630.4	279.9	33.9	1.000162	
6800.0	517.2	-12.3	-21.9	46.1	691.6	628.8	278.5	34.4	1.000160	
6900.0	507.0	-14.1	-22.9	47.0	681.2	627.3	279.9	35.0	1.000157	
7000.0	496.9	-15.2	-24.1	46.0	670.6	625.9	282.1	35.9	1.000154	
7100.0	486.9	-16.1	-25.7	42.9	659.5	624.8	285.5	35.0	1.000151	
7200.0	477.1	-17.0	-27.4	39.8	648.5	623.7	289.4	35.8	1.000148	
7300.0	467.5	-17.9	-29.1	36.7	637.8	622.6	289.4	36.1	1.000145	
7400.0	458.4	-19.0	-30.6	33.5	627.2	621.4	288.7	36.5	1.000142	
7500.0	448.9	-19.7	-31.5	30.4	616.9	620.3	286.9	35.7	1.000140	
7600.0	439.5	-20.7	-34.2	28.6	606.9	619.0	285.0	34.2	1.000137	
7700.0	430.8	-21.9	-35.5	27.6	597.2	617.6	284.4	35.0	1.000135	
7800.0	421.9	-23.1	-36.5	27.0	587.7	616.1	284.1	36.7	1.000132	

UPPER AIR DATA
1050720Z
WHITE SANDS
TABLE 15 Con't

STATION ALTITUDE 3949.00 FEET MSL
14 APR 68
0525 HRS MST
ASCENSION NO. 207

GEODETIC COORDINATES
32.40043 LAT DEG
106.37033 LON DEG

GLOMETRIC ALTITUDE MSL F ET	PRESSURE MILLIBARS	TEMPERATURE AIR DEGREES	DEWPOINT CENTIGRADE	REL.HUM. PERCENT	DENSITY GM/CUBIC METER	SPEED OF SOUND KNOTS	WIND DATA		INDEX OF REFRACTION
							DIRECTION DEGREES(TN)	SPEED KNOTS	
235.0.0	613.3	-24.3	-20.1	26.2	578.3	614.7	284.5	40.2	1.000130
240.0.0	604.8	-25.4	-20.4	25.4	569.1	613.2	284.7	41.9	1.000128
245.0.0	596.4	-26.5	-20.6	25.0	560.0	611.8	283.0	41.5	1.000126
250.0.0	588.1	-27.6	-21.7	25.0	550.9	610.3	281.7	39.8	1.000124
255.0.0	579.9	-29.0	-22.7	25.0	541.9	608.8	278.6	37.6	1.000122
260.0.0	571.9	-30.2	-23.7	25.0	533.1	607.3	276.7	37.1	1.000120
265.0.0	564.1	-31.3	-24.6	25.0	524.5	605.8	275.5	37.5	1.000118
270.0.0	556.4	-32.5	-25.8	24.9	515.8	604.4	275.5	38.7	1.000116
275.0.0	548.8	-33.5	-26.8	24.4	507.9	603.2	273.5	39.5	1.000113
280.0.0	541.3	-34.5	-27.8	23.8	498.2	601.8	270.4	40.1	1.000111
285.0.0	533.9	-35.7	-29.2	23.4	488.8	600.3	269.3	40.9	1.000110
290.0.0	526.6	-36.9	-30.4	22.9	481.5	598.8	268.0	41.6	1.000108
295.0.0	519.6	-38.1	-31.6	22.4	473.6	597.3	271.3	41.3	1.000106
300.0.0	512.6	-39.4	-32.9	20.1**	465.8	595.7	273.0	41.1	1.000104
305.0.0	505.7	-40.9	-34.4	9.2**	458.5	593.7	273.3	41.2	1.000102
310.0.0	498.9	-42.4	-35.7		451.3	591.8	273.6	40.8	1.000101
315.0.0	492.2	-43.7	-37.2		443.5	590.2	273.9	39.9	1.000099
320.0.0	485.5	-44.9	-38.6		435.9	588.5	274.5	39.8	1.000097
325.0.0	479.1	-46.4	-40.1		428.4	586.9	275.2	40.4	1.000095
330.0.0	472.7	-47.5	-41.5		421.0	585.2	275.3	41.6	1.000094
335.0.0	466.5	-48.6	-42.9		413.8	583.6	275.7	43.1	1.000092
340.0.0	460.5	-50.0	-44.4		406.7	581.9	275.0	44.0	1.000091
345.0.0	454.6	-51.3	-45.9		399.7	580.3	274.7	46.7	1.000089
350.0.0	448.8	-52.6	-47.4		392.9	578.6	274.5	45.6	1.000087
355.0.0	442.9	-53.6	-48.9		385.9	577.0	274.3	45.5	1.000086
360.0.0	437.0	-55.1	-50.4		379.0	575.3	274.0	46.8	1.000084
365.0.0	431.7	-56.3	-51.9		372.3	573.6	273.5	46.9	1.000083
370.0.0	426.2	-57.2	-53.4		365.4	572.1	273.7	46.6	1.000081
375.0.0	420.8	-58.5	-54.9		359.7	570.8	272.7	46.0	1.000080
380.0.0	415.5	-59.4	-56.4		351.2	569.5	272.2	45.7	1.000078
385.0.0	410.2	-60.4	-57.9		344.0	568.2	271.7	45.5	1.000077
390.0.0	405.3	-61.4	-59.4		337.6	566.9	272.4	45.3	1.000075
395.0.0	400.3	-62.3	-60.9		331.0	565.6	271.6	45.0	1.000074
400.0.0	395.4	-63.2	-62.4		324.8	564.0	271.0	45.0	1.000072
405.0.0	390.7	-64.0	-63.9		319.0	563.1	270.5	45.5	1.000071
410.0.0	386.0	-63.7	-65.4		309.5	563.6	270.2	47.0	1.000069
415.0.0	381.5	-63.4	-66.9		301.2	564.5	270.5	48.0	1.000067
420.0.0	377.1	-62.6	-68.4		291.1	565.2	270.4	47.4	1.000065
425.0.0	372.9	-62.1	-69.9		285.2	565.9	270.2	46.5	1.000064
430.0.0	368.6	-61.6	-71.4		277.5	566.7	270.5	45.4	1.000062

** AT LEAST ONE ASSUMED RELATIVE HUMIDITY VALUE WAS USED IN THE INTERPOLATION.

STATION ALTITUDE 1989.00 FEET ASL
 12 APR. 64
 ASCENSION NO. 107

UPPER AIR DATA
 1030Z0207
 WHITE SANDS

GEODETIC COORDINATES
 37.63043 LAT DEG
 106.37033 LON DEG

TABLE 15 Con't

GEOMETRIC ALTITUDE FTSL FEET	PRESSURE MILLIBARS	TEMPERATURE AIR DEGREES	REL. HUM. PERCENT	DENSITY GM/CUBIC METER	SPEED OF SOUND KNOTS	WIND DATA		INDEX OF REFRACTION
						DIRECTION DEGREES (TN)	SPEED KNOTS	
435.00.0	16.5	-61.0		270.9	566.6	284.5	45.1	1.000049
440.00.0	16.5	-62.0		264.8	566.1	283.8	45.3	1.000049
445.00.0	16.6	-62.4		259.8	565.6	286.4	43.8	1.000053
450.00.0	16.6	-62.7		253.0	565.1	288.9	53.3	1.000056
455.00.0	16.9	-63.1		247.3	564.6	292.5	52.5	1.000055
460.00.0	16.4	-63.5		241.6	564.1	296.4	51.1	1.000054
465.00.0	16.9	-63.9		236.1	563.6	300.9	45.8	1.000053
470.00.0	16.4	-64.3		230.8	563.1	305.4	41.8	1.000051
475.00.0	16.5	-64.6		225.5	562.6	305.7	41.7	1.000050
480.00.0	16.7	-65.0		220.4	562.0	305.3	41.6	1.000049
485.00.0	16.6	-65.4		215.4	561.5	303.7	41.4	1.000048
490.00.0	16.3	-65.8		210.5	561.0	307.6	41.2	1.000047
495.00.0	16.2	-66.2		205.7	560.5	302.4	40.8	1.000046
500.00.0	16.2	-66.6		201.0	559.9	302.3	40.1	1.000045
505.00.0	16.3	-67.0		196.4	559.4	302.6	38.1	1.000044
510.00.0	16.4	-66.5		191.0	560.3	302.7	35.9	1.000043
515.00.0	16.6	-65.5		185.5	561.4	307.3	32.7	1.000041
520.00.0	16.9	-64.9		180.5	562.1	301.0	29.7	1.000040
525.00.0	16.2	-65.1		176.2	562.0	301.0	27.6	1.000039
530.00.0	16.6	-65.6		171.9	561.8	300.3	25.9	1.000038
535.00.0	16.1	-65.3		167.8	561.7	301.5	25.2	1.000037
540.00.0	16.7	-65.7		164.7	561.1	301.4	25.0	1.000037
545.00.0	16.2	-66.1		160.3	560.5	301.4	25.6	1.000036
550.00.0	16.9	-66.5		156.6	560.0	301.5	26.1	1.000035
555.00.0	16.6	-67.0		153.1	559.4	300.9	26.6	1.000034
560.00.0	16.3	-67.4		149.6	558.8	300.4	26.9	1.000033
565.00.0	16.4	-67.4		145.9	558.8	300.3	26.3	1.000032
570.00.0	16.1	-66.8		141.8	559.9	301.2	25.6	1.000032
575.00.0	16.2	-65.7		137.7	561.1	295.2	24.2	1.000031
580.00.0	16.0	-64.8		137.8	562.3	286.3	23.1	1.000030
585.00.0	16.1	-64.3		130.0	563.5	277.1	23.6	1.000029
590.00.0	16.2	-63.1		126.3	564.7	267.9	25.9	1.000028
595.00.0	16.3	-62.3		122.7	565.8	261.7	28.7	1.000027
600.00.0	16.3	-61.5		119.2	567.0	262.2	31.5	1.000027
605.00.0	16.7	-62.3		115.8	568.2	262.7	34.3	1.000026
610.00.0	16.9	-63.0		112.8	568.8	270.5	28.1	1.000025
615.00.0	16.4	-59.7		109.9	569.2	287.8	22.2	1.000024
620.00.0	16.6	-59.5		107.2	569.5	296.8	18.0	1.000024
625.00.0	16.4	-59.5		104.5	569.8	316.3	15.3	1.000023
630.00.0	16.7	-59.0		101.9	570.1	330.0	14.1	1.000023

GEODETIC COORDINATES:
 32.40943 LAT DEG
 106.37033 LONG DEG

UPPER AIR DATA
 103000Z07
 WHITE SANDS

STATION ALTITUDE 3989.00 FEET MSL
 15 APR 67
 USES HAS 137
 OCCURRENCE NO. 207

TABLE 15 Con't

GEOMETRIC ALTITUDE MSL	PRESSURE MILLIBARS	TEMPERATURE AIR DEGREES CENTIGRADE	RELUM. HUMID. PERCENT	DENSITY GM/CUBIC METER	SPEED OF SOUND KNOTS	WIND DATA			INDEX OF REFRACTION
						DIRECTION DEGREES(TN)	SPEED KNOTS	WIND SHEAR	
6100.0	61.6	-52.7	99.4	570.4	324.0		13.7	1.000072	
6000.0	59.7	-56.3	94.9	570.8	317.0		13.3	1.000072	
5900.0	58.3	-52.3	94.5	571.1	324.4		12.4	1.000071	
5800.0	56.9	-50.0	92.1	571.4	332.2		11.6	1.000071	
5700.0	55.5	-58.4	90.1	570.0	330.7		10.0	1.000070	
5600.0	54.0	-59.7	88.1	570.2	340.7		9.2	1.000070	
5500.0	52.9	-59.3	86.2	569.7	14.5		7.3	1.000071	
5400.0	51.7	-59.2	84.2	569.7	45.2		-9.1	1.000071	
5300.0	50.4	-53.5	81.8	570.8	59.1		11.5	1.000071	
5200.0	49.2	-57.6	79.5	572.0	56.6		11.1	1.000071	
5100.0	48.1	-56.7	77.4	573.2	53.8		10.7	1.000071	
5000.0	46.9	-56.3	75.4	573.7	40.4		8.0	1.000071	
4900.0	45.8	-56.2	73.6	573.8	20.1		7.8	1.000071	
4800.0	44.3	-56.2	71.0	573.8	4.4		7.6	1.000071	
4700.0	43.7	-56.1	70.2	573.9	5.4		7.5	1.000071	
4600.0	42.7	-56.1	68.5	574.0	6.2		7.3	1.000071	
4500.0	41.7	-56.1	66.9	574.0	2.5		7.4	1.000071	
4400.0	40.7	-56.0	65.3	574.1	357.7		7.5	1.000071	
4300.0	39.7	-55.0	63.7	574.3	354.7		7.6	1.000071	
4200.0	38.8	-55.5	62.1	574.7	354.3		7.6	1.000071	
4100.0	37.9	-55.3	60.6	575.1	354.3		7.6	1.000071	
4000.0	37.0	-55.0	59.1	575.4	17.8		7.9	1.000071	
3900.0	36.2	-54.7	57.7	575.6	43.6		10.3	1.000071	
3800.0	35.3	-54.4	56.2	576.2	56.7		13.4	1.000071	
3700.0	34.5	-54.1	54.9	576.5	53.7		13.2	1.000072	
3600.0	33.7	-53.9	53.5	576.9	50.2		13.1	1.000072	
3500.0	32.9	-53.6	52.2	577.3	45.3		12.4	1.000072	
3400.0	32.1	-53.3	50.9	577.6	38.4		10.5	1.000071	
3300.0	31.4	-53.0	49.7	578.0	17.2		9.2	1.000071	
3200.0	30.7	-52.8	48.5	578.4	11.0		8.7	1.000071	
3100.0	29.9	-52.5	47.3	578.7	27.7		8.8	1.000071	
3000.0	29.2	-52.5	46.2	578.3	42.1		9.5	1.000070	
2900.0	28.6	-53.1	45.2	577.8	49.6		10.1	1.000070	
2800.0	27.9	-53.2	44.3	577.4	52.1		10.4	1.000070	
2700.0	27.3	-53.3	43.2	577.6	54.5		10.6	1.000070	
2600.0	26.6	-52.3	42.1	578.3	44.2		9.4	1.000070	
2500.0	26.0	-52.3	41.0	579.0	20.1		8.3	1.000070	
2400.0	25.4	-51.6	40.0	579.6	354.4		8.8	1.000070	
2300.0	24.8	-51.3	39.0	580.3	340.0		10.5	1.000070	
2200.0	24.3	-50.7	38.0	581.0	331.6		12.6	1.000070	

STATION ALTITUDE 506900 FEET MSL
 12 APR 68
 ASCENSION NO. 007

UPPER AIR DATA
 1030Z0207
 WHITE SANDS

GEODETIC COORDINATES
 32.40043 LAT DEG
 106.37033 LON DEG

TABLE 15 Con't

GLOMERIC ALTITUDE MSL F FT	PRESSURE MILLIBARS	AIR DEGREE S	TEMPERATURE DEGREE C	REL. HUM. PERCENT	DENSITY GM/CUBIC METER	SPEED OF SOUND KNOTS	WIND DATA		INDEX OF REFRACTION
							DIRECTION DEGREE (TN)	SPEED KNOTS	
8550.0	25.7	-50.7			57.1	581.1	325.7	14.8	1.000008
8500.0	25.6	-50.7			56.3	581.0	330.6	14.8	1.000008
8450.0	25.6	-50.8			55.5	580.9	335.3	14.6	1.000008
8400.0	25.1	-50.9			54.7	580.8	346.0	14.6	1.000008
8350.0	21.5	-51.0			53.9	580.7	354.6	15.6	1.000008
8300.0	21.1	-50.3			53.0	581.6	1.6	17.1	1.000007
8250.0	20.6	-49.5			52.1	582.7	7.7	18.9	1.000007
8200.0	20.2	-48.0			51.3	583.8	10.6	19.9	1.000007
8150.0	19.7	-48.1			50.5	584.5	11.8	20.4	1.000007
8100.0	19.3	-47.7			49.8	584.9	12.0	20.9	1.000007
8050.0	18.8	-47.4			49.1	585.3	14.9	21.2	1.000006
8000.0	18.4	-47.1			48.4	585.8	20.1	21.1	1.000005
7950.0	18.0	-46.7			47.7	586.2	25.4	21.1	1.000006
7900.0	17.6	-46.4			47.0	586.7	30.6	21.3	1.000005
7850.0	17.2	-46.0			46.4	587.1	28.7	21.7	1.000006
7800.0	16.8	-45.7			45.7	587.5	26.1	22.2	1.000006
7750.0	16.4	-45.4			45.1	588.0	23.5	22.7	1.000006
7700.0	16.1	-45.0			44.5	588.4	17.4	22.7	1.000005
7650.0	15.7	-44.6			43.9	588.8	157.1	23.7	1.000005
7600.0	15.3	-44.3			43.4	589.3	163.1	26.4	1.000005
7550.0	15.0	-44.0			42.8	589.7	134.1	29.1	1.000005
7500.0	14.7	-43.7			42.3	590.2	134.2	26.8	1.000005
7450.0	14.3	-43.6			41.8	590.3	136.3	24.4	1.000005
7400.0	14.0	-43.5			41.3	590.4	134.4	22.1	1.000005
7350.0	13.7	-43.5			40.8	590.4	128.0	20.8	1.000005
7300.0	13.4	-43.4			40.3	590.5	121.7	20.1	1.000005
7250.0	13.1	-43.3			39.9	590.6	114.0	19.7	1.000004
7200.0	12.8	-43.3			39.4	590.6	109.2	19.3	1.000004
7150.0	12.5	-43.2			38.9	590.7	117.7	18.5	1.000004
7100.0	12.3	-43.2			38.5	590.8	111.6	17.7	1.000004
7050.0	12.0	-43.1			38.1	590.8	112.1	17.1	1.000004
7000.0	11.7	-43.1			37.8	590.9	106.6	20.5	1.000004
6950.0	11.5	-43.0			37.4	591.0	294.9	24.2	1.000004
6900.0	11.2	-43.0			37.0	591.1	134.9	28.0	1.000004
6850.0	11.0	-42.9			36.6	591.1			1.000004
6800.0	10.7	-42.9			36.2	591.2			1.000004
6750.0	10.5	-42.8			35.9	591.3			1.000004
6700.0	10.4	-42.8			35.5	591.3			1.000004
6650.0	10.3	-42.7			35.2	591.4			1.000004

STATION ALTITUDE 3959.00 FEET PSL
 1. APR. 57
 ASCENSION NO. 207

MANDATORY LEVELS
 1030000207
 WHITE SANDS

GEOPETIC COORDINATES
 32.40043 LAT DEG
 106.37933 LON DEG

TABLE 16

PRESSURE MILLIBARS	GEOPOTENTIAL FEET	TEMPERATURE AIR DEGREES CENTIGRADE	TEMPERATURE DEWPOINT PERCENT	REL. HUM. PERCENT	WIND DATA	
					DIRECTION DEGREES(TM)	SPEED KNOTS
853.0	4061.	12.2	-10.7	19.	21.9	12.4
800.0	6522.	11.0	-11.7	19.	10.3	6.8
757.0	8279.	8.1	-12.9	21.	332.9	9.5
700.0	10133.	4.3	-9.4	36.	286.4	16.9
657.0	12099.	1.0	-15.6	25.	274.9	23.1
600.0	14191.	-3.7	-19.6	28.	287.9	23.1
550.0	16425.	-8.7	-22.7	30.	278.5	32.0
500.0	18520.	-14.9	-23.7	47.	281.4	35.6
450.0	21417.	-19.6	-32.4	31.	287.1	35.4
400.0	24247.	-26.1	-40.2	25.	263.5	41.7
350.0	27270.	-33.3	-46.7	24.	274.1	39.4
300.0	30862.	-42.2			273.5	40.9
250.0	34520.	-52.3			274.6	45.4
200.0	39440.	-62.4			273.4	45.0
175.0	42151.	-62.4			288.9	47.1
150.0	45259.	-63.0			291.4	52.8
125.0	48915.	-65.8			302.0	41.1
100.0	53361.	-65.3			301.0	25.2
80.0	57795.	-64.3			287.6	23.2
70.0	60498.	-60.1			264.7	32.6
60.0	63566.	-58.6			319.5	13.4
50.0	67424.	-58.2			58.4	11.4
40.0	72772.	-55.9			354.8	7.6
30.0	78125.	-52.5			45.1	8.7
25.0	81987.	-51.4			344.0	9.8
20.0	86720.	-48.3			10.9	20.1
15.0	93029.	-44.0			334.1	29.3
10.0	101098.	-42.7				

** AT LEAST ONE ASSUMED RELATIVE HUMIDITY VALUE WAS USED IN THE INTERPOLATION.

END

FILMED

9-84

DTIC