

AD-A144 843

19320A MLRS MISSILE NUMBER V6134 V6135 V6136 V6137  
V6162 V6166 ROUND NUMB..(U) ARMY ELECTRONICS RESEARCH  
AND DEVELOPMENT COMMAND WSMR NM ATM.. D C KELLER

1/1

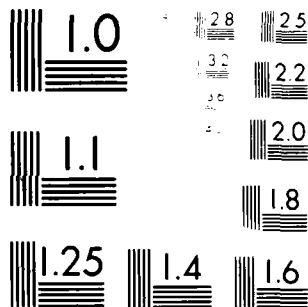
UNCLASSIFIED

JUN 84 ERADCOM/ASL/DR-1346

F/G 4/2

NL

END
DATE
FILED
9-84
DTIC



MICROCOPY RESOLUTION TEST CHART  
NATIONAL BUREAU OF STANDARDS-1963-A

12

DR 1346

Jun 84

AD

APPROVED FOR PUBLIC RELEASE; DISTRIBUTION UNLIMITED

AD-A144 843

METEOROLOGICAL DATA REPORT

19320A MLRS

Missile Number V6134, V6135, V6136, V6137, V6162, V6166

Round Number V597/AT2-59 THRU V602/AT2-64

19 June 1984

by

DONALD C. KELLER

Program Support Coordinator

Phone Number (505) 679-9568

AVN Number 349-9568

DTIC FILE COPY

ATMOSPHERIC SCIENCES LABORATORY  
WHITE SANDS MISSILE RANGE, NEW MEXICO

DTIC  
SELECTE  
AUG 24 1984

ECOM

UNITED STATES ARMY ELECTRONICS COMMAND

84 08 20 173

DISPOSITION INSTRUCTIONS

Destroy this report when it is no longer needed. Do not return to the originator.

DISCLAIMER

The findings in this report are not to be construed as an official Department of the Army position, unless so designated by other authorized documents.

The citation of trade names and names of manufacturers in this report is not to be construed as official Government indorsement or approval of commercial products or services referenced herein.

REPORT DOCUMENTATION PAGE		READ INSTRUCTIONS BEFORE COMPLETING FORM
1. REPORT NUMBER DR 1346	2. GOVT ACCESSION NO. A144843	3. RECIPIENT'S CATALOG NUMBER
4. TITLE (and Subtitle) 19320A MLRS Missile Number V6134, V6135, V6136, V6137, V6162, V6166 Round Number V597/AT2-59 Thru V602/AT2-64	5. TYPE OF REPORT & PERIOD COVERED	
7. AUTHOR(s) White Sands Meteorological Team	6. PERFORMING ORG. REPORT NUMBER	
9. PERFORMING ORGANIZATION NAME AND ADDRESS	8. CONTRACT OR GRANT NUMBER(s) DA Task 1F665702D127-02	
11. CONTROLLING OFFICE NAME AND ADDRESS US Army Electronics Research & Development Cmd Atmospheric Sciences Laboratory White Sands Missile Range, New Mexico 88002	10. PROGRAM ELEMENT, PROJECT, TASK AREA & WORK UNIT NUMBERS	
14. MONITORING AGENCY NAME & ADDRESS (if different from Controlling Office) US Army Electronics Research and Development Cmd Adelphi, MD 20783	12. REPORT DATE Jun 84	
	13. NUMBER OF PAGES	
	15. SECURITY CLASS. (of this report) UNCLASSIFIED	
	15a. DECLASSIFICATION/DOWNGRADING SCHEDULE	
16. DISTRIBUTION STATEMENT (of this Report)		
17. DISTRIBUTION STATEMENT (of the abstract entered in Block 20, if different from Report) Approved for public release; distribution unlimited.		
18. SUPPLEMENTARY NOTES		
19. KEY WORDS (Continue on reverse side if necessary and identify by block number)		
20. ABSTRACT (Continue on reverse side if necessary and identify by block number) Meteorological data gathered for the launching of the 19320A MLRS, Missile Number V6134, V6135, V6136, V6137, V6162, V6166, Round Number V597/AT2-59 Thru V602/AT2-64 are presented in tabular form.		

CONTENTS

PAGE

INTRODUCTION -----	1
DISCUSSION -----	1
GENERAL AREA MAP -----	2
LAUNCH AREA DIAGRAM -----	3
TABLES:	
1. Surface Observation taken at 0958 MDT at LC-33 -----	4
2. Anemometer-Measured Wind Speed and Direction, Tower Levels 1, 2, 3 and 4, taken at 0958 MDT -----	5
3. Aiming and T-Time Computer Met Message Data -----	6
4. WSD Significant Level Data at 0650 MDT -----	7
5. WSD Upper Air Data at 0650 MDT -----	9
6. WSD Mandatory Levels at 0650 MDT -----	13
7. SMR Significant Level Data at 0650 MDT -----	14
8. SMR Upper Air Data at 0650 MDT -----	15
9. SMR Mandatory Levels at 0650 MDT -----	16
10. WSD Significant Level Data at 0825 MDT -----	17
11. WSD Upper Air Data at 0825 MDT -----	18
12. WSD Mandatory Level, at 0825 MDT -----	19
13. SMR Significant Level Data at 0825 MDT -----	20
14. SMR Upper Air Data at 0825 MDT -----	21
15. SMR Mandatory Levels at 0825 MDT -----	22
16. WSD Significant Level Data at 0910 MDT -----	23
17. WSD Upper Air Data at 0910 MDT -----	24
18. WSD Mandatory Levels at 0910 MDT -----	25
19. SMR Significant Level Data at 0910 MDT -----	26
20. SMR Upper Air Data at 0910 MDT -----	27
21. SMR Mandatory Levels at 0910 MDT -----	28
22. WSD Significant Level Data at 0958 MDT -----	29



## INTRODUCTION

19320A MLRS, Missile Numbers V6134, V6135, V6136, V6137, V6162 and V6166, Round Numbers V597/AT2-59 Thru V602/AT2-64, were launched from LC-33, White Sands Missile Range (WSMR). New Mexico, at 0957:51, 0957:56, 0958:00, 0958:05, 0958:10 and 0958:15 MDT, 19 Jun 84. The scheduled launch times were 0955 MDT with a 4.5 second separation.

## DISCUSSION

Meteorological data were recorded and reduced by the White Sands Meteorological Team, Atmospheric Sciences Laboratory (ASL), White Sands Missile Range, New Mexico. The data were obtained by the following methods:

### 1. Observations

#### a. Surface

(1) Standard surface observations to include pressure, temperature ( $^{\circ}\text{C}$ ), relative humidity, dew point ( $^{\circ}\text{C}$ ), density ( $\text{gm}/\text{m}^3$ ), wind direction and speed, and cloud cover were made at the LC-33 Met Site at T-0 minutes.

(2) Anemometer data were provided from existing pole-mounted and tower-mounted anemometers at LC-33. Monitor of wind speed and direction from one anemometer was also provided in the launch control room.

#### b. Upper Air

(1) Low level wind data were obtained from pilot-balloon observations at:

## SITE AND ALTITUDE

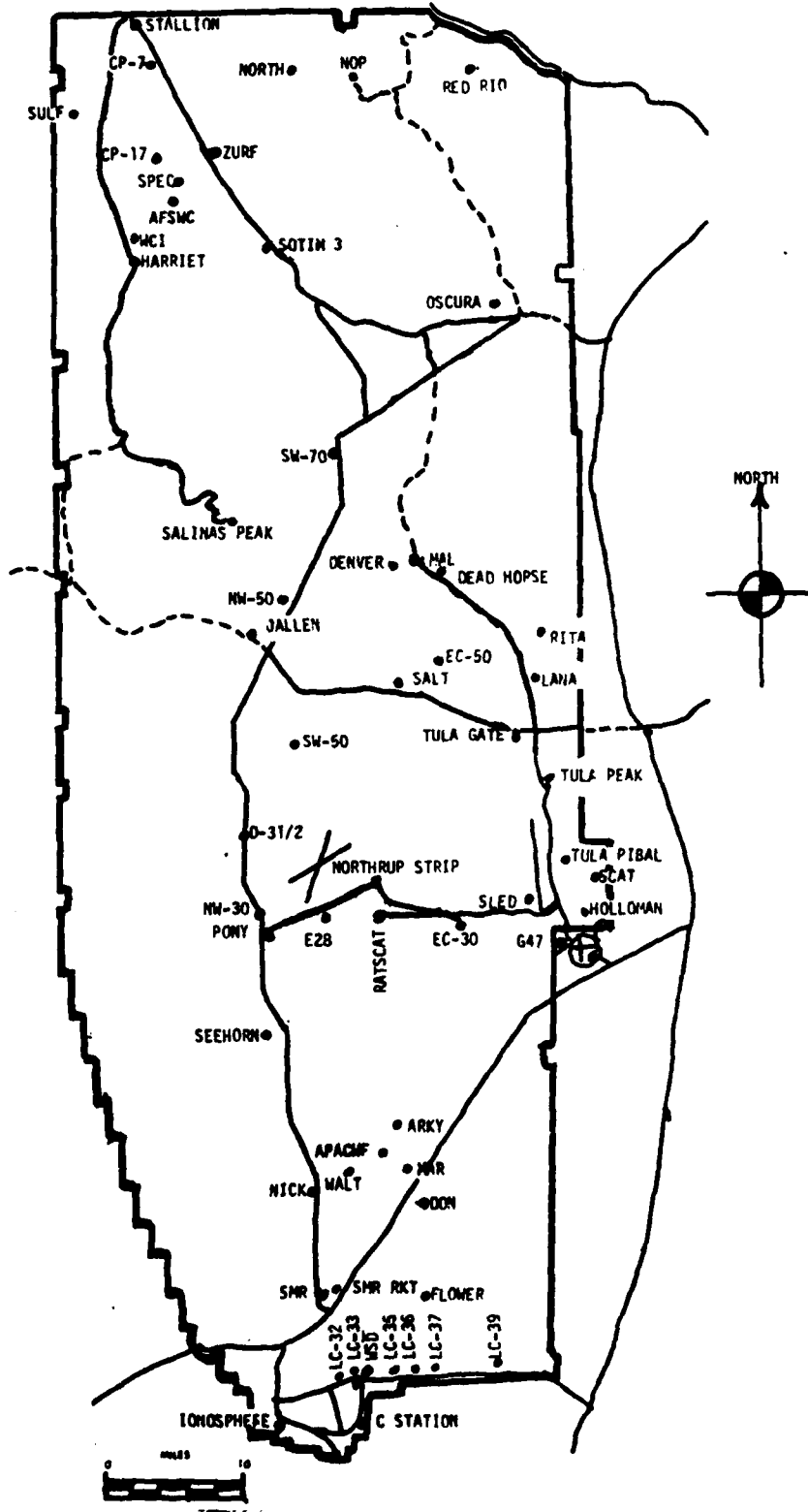
Not Available Due to Radar Failure

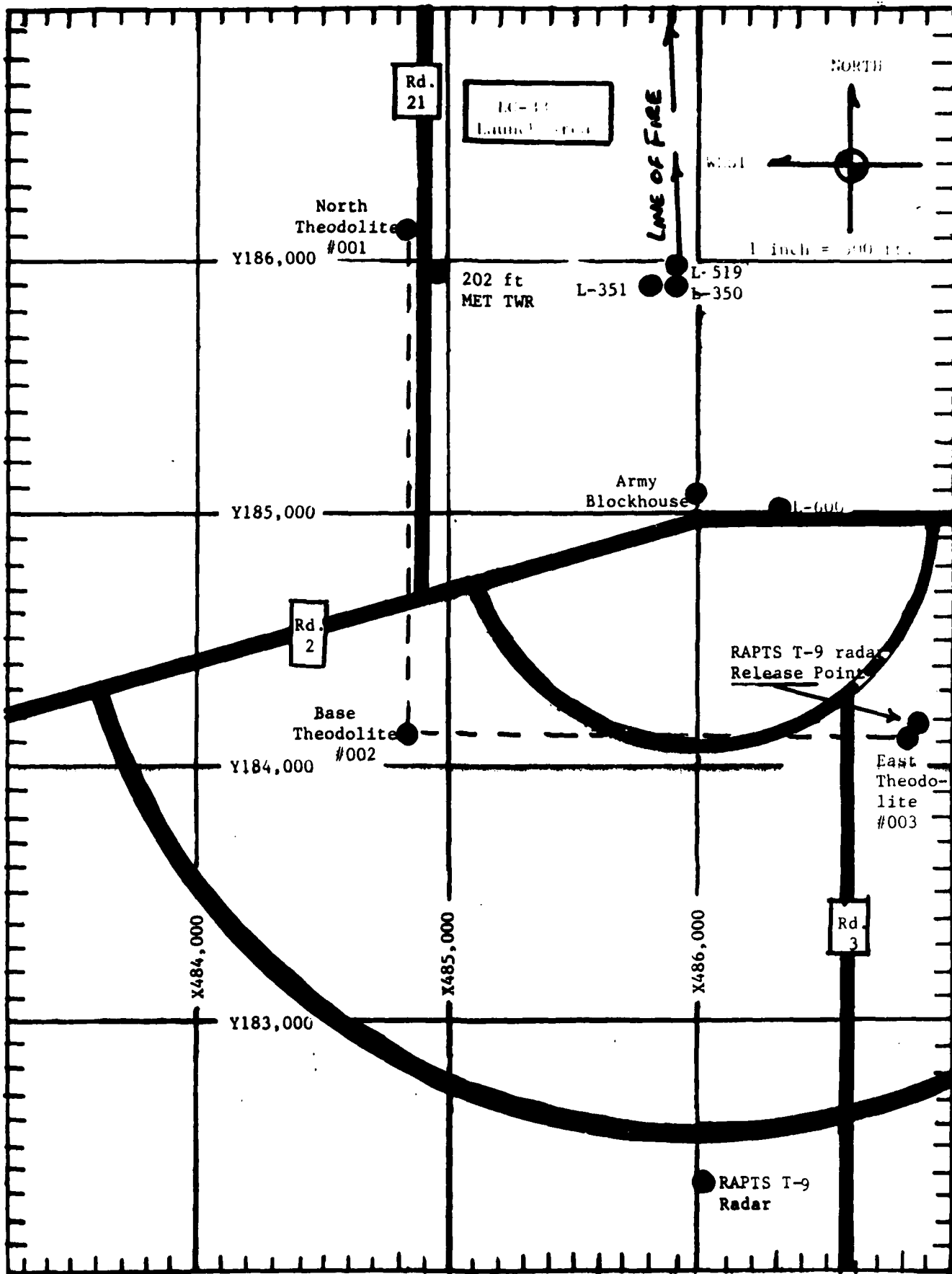
(2) Air structure data (rawinsonde) were collected at the following Met Sites.

### SITE AND TIME

WSD	0650	MDT
SMR	0650	MDT
WSD	0825	MDT
SMR	0825	MDT
WSD	0910	MDT
SMR	0910	MDT
WSD	0958	MDT
SMR	0958	MDT

# WSMR METEOROLOGICAL SITES





PROJECT SURFACE OBSERVATION

TABLE 1 STATION LC-33

DATE 19 Jun 84 X = 484,982.64 Y = 185,957.73 H = 3995.00

TIME M.D.T.	PRESSURE mbs	TEMPERATURE CF	TEMPERATURE OC	DEW POINT OF OC	RELATIVE HUMIDITY %	DENSITY gm/m <sup>3</sup>	WIND		VISIBIL- ITY
							DIRECTION degs In	SPEED kts	
0958	882.1		20.2	16.4	80			CALM	20

OBSTRUCTIONS TO VISIBILITY	CLOUDS						REMARKS			
	1st LAYER		2nd LAYER		3rd LAYER					
	AMT	HGT	AMT	HGT	AMT	HGT				
	3	CU	2500	4	CU	4000	3	AC	12500	RWD E

PSYCHROMETRIC COMPUTATION

TIME: MDT	0958
DRY BULB TEMP.	20.2
WET BULB TEMP.	17.6
WET BULB DEPP.	2.6
DEW POINT	16.4
RELATIVE HUMID.	80

LC-33 METEOROLOGICAL TOWER  
ANEMOMETER MEASURED WIND DATA

WSTM COORDINATES X=484,982.64 Y=185,957.73 H=3983.00 (BASE)

TABLE NO. 2

DATE 19 Jun 84 0958 M D T  
DAY MONTH YEAR TIME

LEVEL #1 12 FT AGL			LEVEL #2 62 FT AGL		
T-TIME (SEC)	DIR (DEG)	SPEED (KTS)	T-TIME (SEC)	DIR (DEG)	SPEED (KTS)
T-30	MISG	MISG	T-30	MISG	MISG
T-20	295	03	T-20	MISG	03
T-10	009	03	T-10	MISG	04
T- 0 (1st T)	354	02	T- 0 (1st T)	MISG	04
T+10	006	04	T+10	MISG	04
T+20	007	03	T+20	MISG	03
T+30	015	03	T+30	MISG	04
T+40	016	03	T+40	MISG	02
T+50	015	02	T+50	MISG	02
T+60		CALM	T+60	MISG	02
LEVEL #3 102 FT AGL			LEVEL #4 202 FT AGL		
T-TIME (SEC)	DIR (DEG)	SPEED (KTS)	T-TIME (SEC)	DIR (DEG)	SPEED (KTS)
T-30	MISG	MISG	T-30	MISG	MISG
T-20	015	05	T-20	023	04
T-10	019	04	T-10	018	03
T- 0 (1st T)	017	03	T- 0 (1st T)	012	03
T+10	015	04	T+10	012	03
T+20	013	04	T+20	011	03
T+30	013	03	T+30	010	03
T+40	013	02	T+40	007	03
T+50	013	02	T+50	006	04
T+60	013	03	T+60	005	03

TABLE 3

## AIMING AND T-TIME COMPUTER MET MESSAGE DATA

19 June 1984

WSD 0650 MDT	SMR 0650 MDT	WSD 0825 MDT	SMR 0825 MDT
METCM1324064	METCM1325064	METCM1324064	METCM1325064
191280122881	191280122881	191440122882	191440122881
00480003 29230881	00391006 29210881	00080002 29400882	00036006 29460881
01379005 29210871	01428009 29220871	01002002 29340872	01063005 29260871
02237009 29020845	02323009 29180846	02077005 29100847	02114004 29100846
03192016 28810806	03224013 29010807	03178010 28840808	03163005 28810807
04138015 28590760	04149014 28640761	04202009 28550761	04194008 28540761
05102016 28310716	05119017 28390716	05164009 28270717	05115014 28250716
06080004 28040674	06099013 28130675	06110012 28040675	06127016 27960674
WSD 0910 MDT	SMR 0910 MDT	WSD 0958 MDT	SMR 0958 MDT
METCM1324064	METCM1325064	METCM1324064	METCM1325064
191520122882	191520122882	191600122882	191600122882
00000000 29470882	00587006 29440882	00000000 29550882	00000000 29670882
01617005 29310872	01028006 29340872	01631002 29340872	01028006 29490872
02635004 29090847	02603004 29150847	02020004 29200847	02011004 29200847
03151009 28830808	03208005 28910808	03147008 28860808	03161006 28910808
04210009 28540761	04215009 28610761	04163008 28610761	04202006 28580761
05161009 28250717	05128013 28290717	05170006 28380717	05124016 28330717
06126013 28040675	06140015 28030675	06167009 28040675	06151012 28120675

STATION ALTITUDE 3739.0 FEET MSL  
 19 JUNE 54  
 ASCENSION NO. 335

SIGNIFICANT LEVEL DATA  
 1710020135  
 WHITE SANDS

GEODETIC COORDINATES  
 32.40343 LAT DEG  
 136.37033 LON DEG

TABLE 4

PRESSURE MILLIBARS	GLOMETRIC ALTITUDE MSL FEET	TEMPERATURE		REL. HUM. PERCENT
		AIR DEGREES CENTIGRADE	DEWPOINT CENTIGRADE	
887.3	7992.0	17.0	15.9	93.0
873.6	4225.6	17.2	15.4	89.0
850.0	6987.3	15.3	13.2	87.0
827.2	5745.4	13.8	13.0	95.0
773.0	7622.6	12.1	9.3	83.0
735.9	8935.8	9.8	5.2	73.0
700.0	10336.3	7.8	3.5	74.0
574.3	11349.6	5.1	3.8	85.0
516.2	13753.5	2.0	-1.2	79.0
599.7	14492.9	.3	-.4	95.0
577.9	15460.4	-.3	-.9	96.0
554.5	16547.7	-1.3	-7.6	52.0
521.1	18155.5	-5.6	-6.1	26.0
516.1	18514.3	-5.7	-3.6	30.0
500.0	19231.5	-5.7	-10.7	73.0
478.5	20359.3	-7.8	-14.0	51.0
471.3	20766.7	-9.0	-16.4	55.0
447.4	22054.0	-12.0	-14.1	39.0
425.6	23255.6	-15.6	-17.5	85.0
403.0	24846.1	-19.0	-27.2	44.0
394.5	25135.4	-18.7	-25.1	57.0
383.3	25359.5	-19.9	-30.2	39.0
361.9	27285.2	-23.1	-40.7	18.0
342.7	28589.3	-25.8	-42.4	21.0
300.0	31708.2	-33.5	-50.0	17.0
298.4	31831.9	-33.1	-50.2	15.0
287.2	32714.3	-34.9	-52.2	15.0
275.0	33624.2	-37.1	-56.1	15.0
260.7	34918.2	-38.3	-55.5	15.0
250.0	35852.9	-40.2		
209.7	39729.5	-50.2		
203.0	40744.3	-52.1		
177.7	43235.2	-57.5		
152.3	45405.5	-63.2		
150.0	46714.5	-62.7		
144.9	47415.6	-53.9		
139.3	48141.2	-53.1		
129.7	49553.0	-55.8		
115.3	51966.3	-70.0		
103.0	54773.5	-71.2		

STATION ALTITUDE 3959.00 FEET MSL  
19 JUNE 54  
ASCENSION NO. 335 0650 MDT

SIGNIFICANT LEVEL DATA  
1710020335  
WHITE SANDS

GEODETTIC COORDINATES  
32.60063 LAT DEG  
106.17033 LON DEG

TABLE 4 Cont'd

PRESSURE GEOMETRIC ALTITUDE MILLIBARS MSL FEET	TEMPERATURE AIR DEWPOINT DEGREES CENTIGRADE	REL. HUM. PERCENT
75.3 67427.9	-58.5	
73.3 51873.4	-55.5	
50.0 58678.8	-58.4	
39.2 71773.6	-55.5	

UPPER AIR DATA  
 1710020335  
 WHITE SANDS

STATION ALTITUDE 3929.0 FEET MSL  
 19 JUNE 54  
 ASCENSION NO. 335

GEODETIC COORDINATES  
 32.63043 LAT DEG  
 106.37033 LON DEG

TABLE 5

GEOMETRIC ALTITUDE MSL FEET	PRESSURE MILLIBARS	TEMPERATURE AIR DEGREES	TEMPERATURE DEWPOINT DEGREES	REL. HUM. PERCENT	DENSITY 54/CUBIC METER	SPEED OF SOUND KNOTS	WIND DATA		INDEX OF REFRACTION
							DIRECTION DEGREES(TW)	SPEED (KNOTS)	
3929.0	990.8	17.0	15.9	93.0	1049.3	666.2	270.0	2.9	1.000315
4000.0	890.5	17.0	15.8	92.8	1048.7	555.2	259.7	2.9	1.000315
4500.0	664.9	15.5	14.6	98.3	1032.5	555.5	147.9	2.0	1.000305
5000.0	549.6	15.3	13.1	97.1	1019.3	653.9	121.5	5.1	1.000205
5500.0	534.5	14.3	13.1	92.4	1004.5	552.8	117.6	10.3	1.000203
6000.0	619.6	13.6	12.5	93.4	989.2	551.9	116.7	14.2	1.000207
6500.0	805.0	13.1	11.5	90.2	973.3	551.3	106.7	15.3	1.000203
7000.0	790.5	12.7	10.6	87.0	957.7	660.5	98.8	15.3	1.000273
7500.0	775.4	12.2	9.5	93.9	942.3	650.0	99.3	15.3	1.000265
8000.0	762.5	11.6	8.1	90.1	928.3	559.0	79.0	15.0	1.000258
8500.0	743.7	10.6	6.6	76.3	914.3	557.8	69.4	16.1	1.000253
9000.0	715.2	9.7	5.1	73.0	901.3	656.7	63.5	15.6	1.000243
9500.0	721.8	9.0	4.5	73.4	887.3	655.3	50.0	15.3	1.000233
10000.0	708.7	9.3	3.9	73.8	873.5	555.0	58.1	13.6	1.000233
10500.0	695.8	7.5	3.5	75.8	859.7	554.1	56.8	9.6	1.000227
11000.0	683.1	6.7	3.7	91.2	846.5	653.1	50.9	6.7	1.000224
11500.0	570.5	5.8	3.5	34.5	833.5	552.2	35.8	6.5	1.000219
12000.0	658.1	5.0	2.4	83.4	820.3	551.1	14.3	5.0	1.000213
12500.0	645.0	4.1	1.4	82.1	808.3	550.0	1.7	5.8	1.000208
13000.0	534.0	3.3	3	30.9	796.0	649.0	6.8	3.5	1.000204
13500.0	522.3	2.4	-0.7	79.7	783.8	647.9	9.1	10.3	1.000201
14000.0	610.7	1.4	-0.9	84.3	772.1	545.7	8.3	9.9	1.000200
14500.0	599.3	0.3	-0.4	95.0	750.7	545.4	6.5	9.2	1.000200
15000.0	593.1	0	-0.6	95.5	747.2	645.1	14.8	5.6	1.000196
15500.0	577.0	-0.3	-1.1	94.8	734.1	544.7	109.4	5.4	1.000192
16000.0	566.2	-0.3	-3.9	79.1	722.0	543.9	272.1	5.1	1.000184
16500.0	555.5	-1.3	-7.3	53.5	710.0	543.2	249.8	3.6	1.000176
17000.0	545.0	-2.5	-6.9	71.5	699.7	641.7	247.2	3.7	1.000175
17500.0	534.6	-3.8	-6.4	82.0	689.5	540.2	245.9	8.5	1.000173
18000.0	524.4	-5.2	-6.2	92.5	679.3	538.6	243.4	9.2	1.000172
18500.0	514.4	-5.7	-8.5	80.7	668.4	537.9	243.7	7.8	1.000165
19000.0	504.5	-5.4	-10.0	75.3	657.4	537.0	229.5	3.0	1.000162
19500.0	494.8	-7.0	-11.5	70.1	646.1	535.2	218.0	3.4	1.000158
20000.0	485.2	-7.4	-12.9	54.8	635.0	635.6	217.0	9.7	1.000154
20500.0	475.9	-9.2	-14.1	52.5	624.3	534.5	215.4	9.7	1.000150
21000.0	466.6	-9.7	-14.2	59.6	614.0	532.8	215.4	10.4	1.000149
21500.0	457.5	-11.1	-14.1	78.7	603.2	631.2	214.5	11.2	1.000147
22000.0	448.5	-12.5	-14.1	87.5	598.5	529.5	212.3	11.5	1.000145
22500.0	439.7	-13.8	-15.4	87.5	589.5	627.9	210.2	11.8	1.000142
23000.0	431.0	-15.0	-16.8	85.9	580.5	525.4	209.2	12.2	1.000139

UPPER AIR DATA  
 171000Z0335  
 WHITE SANDS

STATION ALTITUDE 3229.7 FEET MSL  
 19 JUNE 84  
 ASCENSION NO. 355

GEODETIC COORDINATES  
 32.40043 LAT DEG  
 106.37033 LON DEG

TABLE 5 Cont'd

GEOMETRIC ALTITUDE MSL FEET	PRESSURE MILLIBARS	TEMPERATURE AIR DEGREES	TEMPERATURE DP/POINT CENTIGRADE	REL-HUM. PERCENT	DENSITY 5M/CUBIC METER	SPEED SOUND KNOTS	WIND DATA		INDEX OF REFRACTION
							DIRECTION DEGREES(TW)	SPEED (KNOTS)	
23500.0	422.4	-16.0	-16.8	78.9	571.6	525.2	203.3	12.6	1.000135
24000.0	413.9	-16.7	-21.5	55.9	561.8	524.2	201.2	13.9	1.000131
24500.0	405.6	-17.5	-24.7	53.0	552.3	523.2	194.7	15.6	1.000128
25000.0	397.5	-18.3	-26.2	49.9	544.0	522.1	193.2	19.1	1.000125
25500.0	389.5	-19.3	-27.3	48.6	534.1	520.9	192.5	20.7	1.000123
26000.0	381.6	-20.2	-31.1	36.9	525.3	519.7	200.9	22.1	1.000120
26500.0	373.3	-21.3	-34.4	29.5	517.0	518.3	208.7	23.9	1.000117
27000.0	365.2	-22.5	-39.2	22.2	508.7	516.9	212.8	25.7	1.000115
27500.0	356.7	-23.7	-41.0	16.5	500.3	515.3	215.4	27.6	1.000113
28000.0	351.3	-25.1	-41.5	19.6	493.3	513.5	215.8	29.0	1.000111
28500.0	344.0	-26.5	-42.3	20.3	485.2	511.8	214.5	30.3	1.000109
29000.0	335.8	-27.7	-43.4	20.5	477.8	510.4	215.3	32.6	1.000107
29500.0	329.6	-28.8	-44.5	19.8	469.3	509.1	216.3	35.0	1.000105
30000.0	322.7	-29.8	-45.8	19.2	461.9	507.7	216.3	38.9	1.000104
30500.0	315.9	-30.9	-47.0	18.5	454.2	506.4	216.2	43.1	1.000102
31000.0	309.2	-32.0	-48.3	17.9	446.5	505.0	215.0	44.4	1.000100
31500.0	302.7	-33.1	-49.5	17.3	439.1	503.7	215.8	45.5	1.000098
32000.0	296.2	-34.4	-50.6	15.8	430.5	503.2	216.4	45.4	1.000095
32500.0	289.9	-36.5	-51.7	15.2	423.1	501.9	216.3	45.2	1.000093
33000.0	283.6	-38.6	-52.9	15.0	415.9	500.5	215.2	45.7	1.000091
33500.0	277.5	-40.8	-53.8	15.0	409.0	500.0	215.7	46.2	1.000089
34000.0	271.5	-43.1	-54.5	15.0	401.5	500.0	216.5	45.7	1.000087
34500.0	265.5	-45.7	-55.0	15.0	393.8	500.0	217.5	47.8	1.000088
35000.0	259.8	-48.9	-56.3	13.7**	384.3	500.0	219.3	50.3	1.000085
35500.0	254.1	-52.7	-53.5	5.8**	379.0	500.0	220.4	52.7	1.000085
36000.0	248.4	-40.6	-41.8		372.1	500.0	220.7	54.6	1.000083
36500.0	242.9	-41.8			355.8	500.0	221.1	55.5	1.000081
37000.0	237.4	-43.1			350.5	500.0	221.7	56.8	1.000080
37500.0	232.1	-44.4			353.5	500.0	222.2	54.4	1.000079
38000.0	226.9	-45.7			347.5	500.0	222.7	54.9	1.000077
38500.0	221.6	-47.0			341.5	500.0	223.3	55.3	1.000075
39000.0	215.8	-48.3			335.9	500.0	224.7	56.3	1.000075
39500.0	211.9	-49.6			330.2	500.0	226.2	53.3	1.000074
40000.0	207.1	-50.7			324.3	500.0	229.7	52.4	1.000072
40500.0	202.3	-51.5			318.1	500.0	232.3	51.6	1.000071
41000.0	197.6	-52.7			312.2	500.0	234.8	52.8	1.000070
41500.0	193.0	-53.7			306.4	500.0	237.1	54.1	1.000068
42000.0	188.4	-54.5			300.7	500.0	236.3	52.7	1.000067
42500.0	184.0	-55.9			295.1	500.0	235.4	51.2	1.000066
43000.0	179.7	-57.0			289.5	500.0	235.4	51.2	1.000065

\*\* AT LEAST ONE ASSUMED RELATIVE HUMIDITY VALUE WAS USED IN THE INTERPOLATION.

STATION ALTITUDE 3929.00 FEET "SL  
 19 JUNE 54  
 ASCENSION NO. 335

UPPER AIR DATA  
 1710020335  
 WHITE SANDS

GEODETIC COORDINATES  
 32.43043 LAT DEG  
 106.37033 LON DEG

TABLE 5 Cont'd

GLOMERIC ALTITUDE MSL FEET	PRESSURE MILLIBARS	TEMPERATURE AIR DEGREES	REL. HUM. PERCENT	DENSITY 5M/CUBIC METER	SPEED OF SOUND KNOTS	WIND DATA		INDEX OF REFRACTION
						DIRECTION DEGREES(TN)	SPEED KNOTS	
43500.0	175.4	-59.0		284.0	571.5	234.0	51.1	1.000063
44000.0	171.2	-59.9		278.6	570.3	234.7	50.2	1.000062
44500.0	167.1	-59.8		272.3	559.1	234.5	49.3	1.000061
45000.0	163.1	-60.7		267.4	567.9	233.7	47.0	1.000060
45500.0	159.2	-61.6		262.1	555.7	232.7	44.7	1.000059
46000.0	155.3	-62.5		256.9	555.5	233.5	41.3	1.000058
46500.0	151.6	-63.0		251.6	556.7	234.8	37.8	1.000056
47000.0	147.9	-63.2		245.6	564.5	239.1	32.9	1.000055
47500.0	144.3	-63.8		240.1	563.7	243.2	27.6	1.000053
48000.0	140.8	-63.3		233.7	564.4	243.6	24.5	1.000052
48500.0	137.3	-63.7		228.5	553.8	243.3	21.5	1.000051
49000.0	134.0	-64.6		223.8	562.6	242.9	19.4	1.000050
49500.0	130.7	-65.5		219.3	551.6	241.6	17.3	1.000049
50000.0	127.4	-66.4		214.3	550.1	243.4	14.9	1.000048
50500.0	124.3	-67.3		210.3	558.9	248.2	12.4	1.000047
51000.0	121.2	-68.2		206.0	557.7	249.5	10.4	1.000045
51500.0	118.2	-69.1		201.3	555.5	245.2	9.6	1.000045
52000.0	115.2	-70.0		197.5	555.3	234.6	7.7	1.000044
52500.0	112.3	-70.2		192.8	555.0	215.0	5.4	1.000043
53000.0	109.5	-70.4		188.1	554.7	202.5	9.6	1.000042
53500.0	106.7	-70.7		183.5	554.6	193.9	10.5	1.000041
54000.0	104.0	-70.9		179.2	554.1	187.4	11.5	1.000040
54500.0	101.4	-71.1		174.8	553.8	185.7	11.8	1.000039
55000.0	98.9	-71.1		170.6	553.8	184.0	12.1	1.000038
55500.0	96.4	-70.9		166.7	554.1	184.0	11.1	1.000037
56000.0	94.0	-70.5		161.5	554.4	186.0	10.2	1.000035
56500.0	91.6	-70.4		157.4	554.8	184.6	8.9	1.000035
57000.0	89.3	-70.1		153.2	555.1	181.5	7.6	1.000034
57500.0	87.0	-69.9		149.2	555.6	158.5	5.9	1.000033
58000.0	84.9	-69.7		145.1	555.7	140.0	4.5	1.000032
58500.0	82.7	-69.4		141.5	556.1	128.7	4.6	1.000032
59000.0	80.7	-69.2		137.7	556.4	121.7	4.8	1.000031
59500.0	78.6	-68.9		134.1	555.7	149.5	5.0	1.000030
60000.0	75.7	-68.7		130.6	557.0	144.1	6.9	1.000029
60500.0	74.7	-68.3		127.1	557.5	136.9	6.9	1.000028
61000.0	72.9	-67.3		123.3	559.0	108.1	6.7	1.000027
61500.0	71.1	-66.2		119.5	550.5	94.0	9.2	1.000027
62000.0	69.3	-65.3		116.2	551.7	100.5	11.2	1.000025
62500.0	67.7	-64.8		113.1	562.4	107.3	13.2	1.000025
63000.0	66.0	-64.3		110.1	553.1	107.4	14.5	1.000025

STATION ALTITUDE 3289.0 FEET MSL  
 19 JUNE 54  
 ASCENSION NO. 335

UPPER AIR DATA  
 1710020335  
 WHITE SANDS

GEODETTIC COORDINATES  
 32.60043 LAT DEG  
 106.37033 LON DEG

TABLE 5 Cont'd

GEOMETRIC ALTITUDE MSL FEET	PRESSURE MILLIBARS	TEMPERATURE		REL. HUM. PERCENT	DENSITY GM/CUBIC METER	SOUND SPEED KNOTS	WIND DATA		INDEX OF REFRACTION
		AIR DEGREES	DEPT. DEGREE				DIRECTION DEGREES (TN)	SPEED KNOTS	
63500.0	54.4	-63.7			107.2	563.7	103.3	15.3	1.000026
54000.0	62.9	-63.2			104.3	556.4	101.1	15.8	1.000023
64500.0	51.3	-62.7			101.5	555.1	100.0	15.4	1.000023
65000.0	59.9	-62.2			98.9	555.8	98.9	15.0	1.000022
65500.0	56.4	-61.7			96.2	555.5	99.2	14.9	1.000021
66000.0	57.0	-61.2			93.7	557.2	99.5	14.7	1.000021
66500.0	55.6	-60.6			91.2	557.9	94.2	14.8	1.000020
67000.0	54.3	-60.1			88.8	558.6	85.5	15.2	1.000020
67500.0	53.0	-59.5			86.4	559.3	80.3	15.0	1.000019
68000.0	51.7	-59.1			84.1	570.0	76.3	17.2	1.000019
68500.0	50.4	-58.6			81.9	570.7	74.0	18.3	1.000018
69000.0	49.2	-58.2			79.8	571.1	83.5	18.9	1.000018
69500.0	46.1	-57.9			77.3	571.5	82.3	20.1	1.000017
70000.0	46.9	-57.7			75.9	571.9	101.8	20.4	1.000017
70500.0	45.8	-57.4			74.0	572.2	112.8	20.5	1.000015
71000.0	44.7	-57.1			72.2	572.6	123.3	21.4	1.000016
71500.0	43.7	-56.8			70.6	573.0	119.6	19.2	1.000015
72000.0	42.7	-56.6			68.5	573.3	111.5	17.1	1.000015
72500.0	41.7	-56.3			66.9	573.7			1.000015
73000.0	40.7	-56.0			55.3	574.1			1.000015
73500.0	39.7	-55.7			53.5	574.4			1.000014

STATION ALTITUDE 3089.0 FEET "SL  
 19 JUNE 54  
 ASCENSION NO. 335 0650 MDT

MANDATORY LEVELS  
 1710020335  
 WHITE SANDS  
 TABLE 6

GEODETIC COORDINATES  
 32.63043 LAT DEG  
 136.37033 LONG DEG

MILLIBARS	PRESSURE GEOPOTENTIAL FEET	AIR TEMPERATURE DEGREES CENTIGRADE	REL. HUM. PERCENT	WIND DATA	
				DIRECTION DEGREES(TW)	SPEED KNOTS
850.0	4986.	15.3	87.	121.8	5.9
800.0	6668.	13.0	89.	131.7	15.8
750.0	8446.	10.5	77.	70.5	15.9
700.0	10327.	7.8	74.	57.4	11.0
650.0	12326.	6.4	83.	5.1	6.1
600.0	14452.	3.	95.	6.7	9.3
550.0	16747.	-1.9	66.	247.9	8.3
500.0	19206.	-5.7	73.	226.7	8.1
450.0	21886.	-12.3	95.	212.7	11.5
400.0	24804.	-18.0	64.	193.5	17.2
350.0	28035.	-25.6	20.	215.5	29.2
300.0	31546.	-33.5	17.	215.1	55.5
250.0	35784.	-43.2		229.6	54.0
200.0	40645.	-52.1		233.5	52.0
175.0	43442.	-59.1		236.9	51.0
150.0	46587.	-62.7		235.5	36.1
125.0	50244.	-67.1		246.8	13.1
100.0	54603.	-71.2		136.8	11.9
80.0	58955.	-69.1		166.7	4.9
70.0	61590.	-65.5		96.6	13.3
60.0	64690.	-62.2		99.1	15.1
50.0	68419.	-59.6		75.8	18.4
40.0	73052.	-55.8			

\*\* AT LEAST ONE ASSUMED RELATIVE HUMIDITY VALUE WAS USED IN THE INTERPOLATION.

STATION ALTITUDE 1907.00 FEET "51"  
 10 JUNE 64 0650 MDT  
 ASCENSION MO. 102

SIGNIFICANT LEVEL DATA  
 171004010R  
 C M R

GEODETTIC COORDINATES  
 32.48034 LAT DEG  
 106.42307 LON DEG

TABLE 7

GEOMETRIC ALTITUDE METERS	GEOMETRIC ALTITUDE FEET	TEMPERATURE AIR DEGREE CENTIGRADE	TEMPERATURE AIR DEGREE FAHRENHEIT	REL. HUM. PERCENT
1907.0	6273.0	17.1	63	90.0
1700.0	5577.0	17.2	63	82.0
1500.0	4921.0	16.5	62	82.0
1400.0	4593.0	14.7	58	87.0
1300.0	4265.0	12.8	55	87.0
1200.0	3937.0	10.0	50	86.0
1000.0	3281.0	8.5	47	71.0
635.2	2083.4	4.7	40	76.0

STATION ALTITUDE 1097.00 FEET MSL  
 10 JUNE 64 0650 MDT  
 ASCENSION NO. 102

UPPER AIR DATA  
 171006010Z  
 S M P

GEOMETRIC COORDINATES  
 32.68034 LAT DEG  
 106.42107 LONG DEG

TABLE 8

GEOMETRIC ALTITUDE MSL FEET	PRESSURE MILLIBARS	TEMPERATURE DEGREES CENTIGRADE	TEMP DEWPOINT	REL HUM. PERCENT	DENSITY GM/CM <sup>3</sup> METER	SPEED OF SOUND KNOTS	WIND DIR DEGREES (TN)	WIND SPEED KNOTS	INDEX OF REFRACTION
1097.0	891.0	17.1	15.4	88.0	1160.4	666.2	720.0	6.0	1.000313
4500.0	880.9	17.1	15.4	89.8	1160.3	666.2	710.0	6.0	1.000313
5000.0	885.4	16.0	13.8	87.0	1037.7	665.8	194.0	5.2	1.000301
5500.0	859.1	14.5	13.6	82.0	1035.6	665.3	167.7	5.6	1.000206
6000.0	835.0	15.5	12.9	84.8	1001.0	664.9	147.6	6.0	1.000201
6500.0	820.2	14.5	12.6	87.0	984.4	663.0	135.2	9.8	1.000286
7000.0	805.6	13.9	11.8	87.0	971.4	662.2	127.3	11.0	1.000280
7500.0	791.2	13.2	11.1	87.0	954.6	661.4	115.0	11.0	1.000274
8000.0	777.1	12.6	10.1	85.2	941.7	660.5	99.2	12.6	1.000268
8500.0	763.1	11.9	8.6	80.3	927.6	659.6	86.2	16.1	1.000259
9000.0	749.3	11.3	7.1	75.4	913.7	658.7	77.2	15.5	1.000251
9500.0	735.0	10.6	5.5	70.5	899.2	657.8	69.8	17.1	1.000243
10000.0	722.6	9.9	3.0	66.2	885.5	656.9	64.7	18.2	1.000236
10500.0	709.5	9.1	3.7	69.0	871.9	655.9	62.6	17.2	1.000232
11000.0	696.6	8.3	3.6	71.3	858.5	655.0	60.7	16.2	1.000229
11500.0	683.8	7.6	2.9	72.2	845.0	654.1			1.000225
12000.0	671.7	6.9	2.6	73.2	832.7	653.2			1.000220
12500.0	659.7	6.1	1.9	74.1	819.7	652.4			1.000216
	646.9	5.4	1.6	75.1	805.8	651.5			1.000212

MANDATORY LEVELS  
 171000Z  
 C M P

GEOMETRIC COORDINATES  
 32.48034 LAT DEG  
 106.42107 LON DEG

STATION ALTITUDE 7007.10 FEET MSL  
 40 JUMP PA  
 ASCENSION NO. 103  
 0650 MDT

TABLE 9

MILLIBARS	PRESSURE GEOPOTENTIAL FEET	TEMPERATURE AIR DEGREES CENTIGRADE	REL. HUM. PERCENT	WIND DATA	
				DIRECTION DEGREES(TN)	SPEED KNOTS
950.0	5000.	16.5	82.	157.6	5.6
900.0	6480.	17.5	87.	125.1	11.9
750.0	8475.	11.3	76.	77.6	15.4
700.0	9157.	9.5	71.	61.0	16.5
450.0	12761.	5.4	75.		

STATION ALTITUDE 3989.0 FEET "SL"  
 19 JUNE 54  
 ASCENSION NO. 336

0825 MDT

SIGNIFICANT LEVEL DATA  
 1710Z20335  
 WHITE SANDS

GEODETIC COORDINATES  
 32.60043 LAT DEG  
 136.37033 LON DEG

TABLE 10

PRESSURE MILLIBARS	GEOMETRIC ALTITUDE MSL FEET	TEMPERATURE AIR DEGREE CENTIGRADE	REL. HUM. PERCENT
831.3	3989.0	15.6	93.0
879.3	4559.3	19.0	73.0
850.0	5023.5	15.0	90.0
815.0	5135.7	13.6	97.0
700.0	10371.0	7.0	97.0
683.1	11013.2	5.8	97.0
540.2	12767.1	2.9	73.0
612.5	13952.1	1.2	34.0
599.5	14574.5	-13.8	72.0
		15.7	
		14.1	
		14.4	
		13.1	
		6.6	
		5.4	
		-0.5	
		-1.2	
		-17.7	

STATION ALTITUDE 3950.0 FEET MSL  
 19 JUNE 82  
 ASCENSION NO. 336

UPPER AIR DATA  
 171003336  
 WHITE SANDS

GEODETIC COORDINATES  
 32.63043 LAT DEG  
 106.37333 LON DEG

0825 MDT

TABLE 11

GEOMETRIC ALTITUDE MSL FEET	PRESSURE MILLIBARS	TEMPERATURE AIR DEGREES DEFPPOINT CENTIGRADE	REL-HUM. PERCENT	DENSITY GM/CUBIC METER	SPEED OF SOUND KNOTS	WIND DATA		INDEX OF REFRACTION
						DIRECTION DEGREES(TN)	SPEED KNOTS	
3989.0	891.8	18.6	83.0	1044.2	558.0	45.7	1.9	1.000312
4000.0	891.5	13.7	81.6	1044.4	558.0	45.9	2.0	1.000311
4500.0	866.0	17.6	80.7	1030.0	666.7	72.7	3.0	1.000303
5000.0	850.7	15.1	89.6	1017.2	555.0	84.7	4.4	1.000301
5500.0	835.6	15.0	92.8	1002.9	663.7	90.2	5.9	1.000295
6000.0	820.8	14.0	95.8	988.7	552.5	93.7	7.4	1.000291
6500.0	805.0	13.1	97.0	974.1	551.4	95.7	8.8	1.000285
7000.0	791.5	12.3	97.0	959.4	660.4	103.9	9.3	1.000279
7500.0	777.2	11.5	97.0	944.9	559.4	110.2	10.0	1.000272
8000.0	763.2	10.7	97.0	930.5	658.5	110.9	9.7	1.000265
8500.0	749.4	10.0	97.0	916.5	557.5	108.7	9.0	1.000260
9000.0	735.9	9.2	97.0	902.7	555.5	104.4	8.5	1.000255
9500.0	722.6	8.4	97.0	889.1	655.5	93.5	8.9	1.000249
10000.0	709.5	7.6	97.0	875.7	554.5	84.0	9.6	1.000244
10500.0	696.7	7.0	97.0	861.9	553.7	75.5	10.1	1.000239
11000.0	683.9	6.8	97.0	846.5	553.6	70.1	10.7	1.000235
11500.0	671.3	5.7	91.8	834.5	652.1	55.1	11.2	1.000227
12000.0	659.0	4.6	86.3	823.0	550.6	55.2	10.7	1.000219
12500.0	646.8	3.5	80.7	811.5	549.1	65.4	10.3	1.000212
13000.0	634.8	2.5	79.3	799.4	548.0			1.000207
13500.0	623.0	1.8	81.7	786.5	647.1			1.000204
14000.0	611.4	-0.1	83.0	777.5	544.8			1.000199
14500.0	599.6	-13.7	72.1	804.2	627.8			1.000193

STATION ALTITUDE 3957.70 FEET MSL  
 19 JUNE 84  
 ASCENSION NO. 530

MANDATORY LEVELS  
 171000335  
 WHITE SANDS

SEDDETIC COORDINATES  
 32.63043 LAT DEG  
 136.37033 LON DEG

TABLE 12

PRESSURE GEOPGTENTIAL MILLIBARS	TEMPERATURE AIR DEGREES CENTIGRADE	REL. HUM. PERCENT	WIND DATA	
			DIRECTION DEGREES(TN)	SPEED KNOTS
950.0	16.0	90.	86.5	6.5
870.0	12.8	97.	99.8	9.0
750.0	10.0	97.	108.8	9.0
700.0	7.0	97.	78.4	10.0
650.0	3.8	92.	55.3	10.4
600.0	-13.2	72.		

STATION ALTITUDE 1007.0 FEET MSL  
 10 JUN 62 0825 MDT  
 ASCENSION NO. 104

SIGNIFICANT LEVEL DATA  
 171000Z104  
 0 0 0

GEODETTIC COORDINATES  
 32.48334 LAT DEG  
 106.42707 LON DEG

TABLE 13

PRESSURE MILLIBARS	GEOMETRIC ALTITUDE MSL FEET	TEMPERATURE		REL. HUM. PERCENT
		AIR DEGREES CENTIGRADE	DEWPOINT	
985.6	7077.3	19.9	15.1	74.0
878.8	6000.5	17.6	15.4	87.0
850.0	5177.6	16.3	14.0	86.0
814.6	4114.5	13.6	13.1	97.0
717.7	985.0	8.0	7.7	98.0
700.0	17145.4	6.2	5.5	95.0
672.9	11832.9	4.8	4.4	97.0
651.6	17204.5	4.1	3.4	95.0
633.8	13047.4	2.8	-2.3	69.0

UPPER AIR DATA  
 1710040104  
 C M R

STATION ALTITUDE 1007.70 FEET MSL  
 10 JUNE 64  
 ASCENSION NO. 104

GEODETIC COORDINATES  
 32.48034 LAT DEG  
 106.42107 LON DEG

TABLE 14

GEOMETRIC ALTITUDE MSL FEET	GEOMETRIC ALTITUDE METERS	TEMPERATURE °C	TEMPERATURE °F	REL. HUM. PERCENT	DENSITY GM/CM <sup>3</sup>	SPEED OF SOUND KNOTS	WIND DIRECTION DEGREES(TN)	WIND SPEED KNOTS	INDEX OF REFRACTION
1007.7	307.7	19.9	67.8	74.0	1.040.0	669.4	27.0	4.0	1.000308
4000.0	812.7	19.8	67.6	74.4	1.040.0	669.3	20.0	4.0	1.000308
4500.0	853.8	17.0	62.6	96.6	1.031.8	666.1	28.8	5.2	1.000306
5000.0	894.9	16.3	61.3	96.0	1.016.7	665.2	40.4	4.5	1.000299
5500.0	936.0	15.1	59.2	90.7	1.007.4	663.8	55.5	4.1	1.000295
6000.0	977.1	13.9	57.0	95.7	989.8	662.4	72.7	4.0	1.000290
6500.0	1018.2	13.1	55.6	97.1	974.7	661.3	88.5	4.3	1.000285
7000.0	1059.3	12.3	54.1	97.7	950.7	660.4	107.0	4.8	1.000279
7500.0	1100.4	11.5	52.7	97.4	944.7	659.5	105.2	4.6	1.000273
8000.0	1141.5	10.8	51.4	97.5	920.4	658.5	104.5	9.1	1.000267
8500.0	1182.6	10.0	50.0	97.6	914.7	657.6	93.7	0.1	1.000261
9000.0	1223.7	9.3	48.7	97.9	907.7	656.7	80.0	10.4	1.000255
9500.0	1264.8	8.5	47.3	97.9	988.5	655.7	71.5	12.1	1.000250
10000.0	1305.9	7.5	45.5	97.1	974.0	654.4	69.5	13.6	1.000244
10500.0	1347.0	6.1	43.0	95.2	964.8	652.6	67.0	15.0	1.000236
11000.0	1388.1	5.6	42.1	95.0	950.4	652.0			1.000232
11500.0	1429.2	5.1	41.2	96.5	836.7	651.4			1.000228
12000.0	1470.3	4.5	40.9	96.3	827.6	650.7			1.000223
12500.0	1511.4	3.7	38.7	97.0	817.2	649.6			1.000215
13000.0	1552.5	2.9	37.2	70.6	798.4	648.3			1.000204

STATION ALTITUDE 3007.70 FEET MSL  
 20 JUNE 64  
 ASCENSION NO. 104

MANDATORY LEVELS  
 171000Z0104  
 C M R

GEOMETRIC COORDINATES  
 32.48034 LAT DEG  
 106.42107 LON DEG

TABLE 15

PRESSURE MILLIBARS	GEOPOTENTIAL GFT	AIR TEMPERATURE DEGREES CENTIGRADE	TEMPERATURE NEUPOINT PERCENT	REL. HUM. PERCENT	WIND DATA DIRECTION DEGREES(TN)	SPEED KNOTS
950.0	5016.	16.7	16.0	86.	41.0	4.5
900.0	4704.	17.7	17.7	97.	94.6	4.6
850.0	4472.	18.1	2.7	88.	93.3	9.0
800.0	4235.	4.2	5.2	95.	68.7	14.6
450.0	2347.	4.0	7.0	83.		

STATION ALTITUDE 3989.0 FEET MSL  
 19 JUNE 54  
 ASCENSION NO. 537

SIGNIFICANT LEVEL DATA  
 1710J20337  
 WHITE SANDS

GEODETTIC COORDINATES  
 32.40043 LAT DEG  
 136.37033 LON DEG

TABLE 16

PRESSURE GEOMETRIC ALTITUDE MILLIBARS MSL FEET	TEMPERATURE AIR DEWPOINT DEGREES CENTIGRADE	REL. HUM. PERCENT
981.9 3999.0	19.2 15.1	82.0
977.7 4117.5	13.0 13.5	75.0
862.1 4629.2	17.4 15.0	86.0
850.0 5026.0	15.7 13.5	87.0
785.9 7239.5	11.9 11.4	77.0
700.0 10370.2	5.8 5.4	97.0
582.5 11055.9	6.8 5.4	77.0
556.6 12193.3	3.8 3.2	96.0
540.3 12770.5	2.9 .3	83.0
513.0 13928.9	1.1 -.5	89.0
599.1 14535.5	1.1 -2.1	72.0

STATION ALTITUDE 3900.00 FEET MSL  
 19 JUNE 54  
 ASCENSION #10. 337

UPPER AIR DATA  
 1710020337  
 WHITE SANDS

GEODETIC COORDINATES  
 32.43063 LAT DEG  
 106.37033 LON DEG

TABLE 17

GLOMETRIC ALTITUDE MSL FEET	PRESSURE MILLIBARS	TEMPERATURE AIR DEGRFS	TEMPERATURE DFWPOINT CENTIGRADE	REL.HUM. PERCENT	DENSITY GM/CUBIC METER	SPEED OF SOUND KNOTS	DIRFCTION DEGRES(TW)	WIND DATA SPEED (KNOTS)	INDEX OF REFRACTION
3900.0	681.9	19.2	15.1	82.0	1042.5	553.7		0.0	1.000313
4000.0	811.6	19.1	15.8	81.6	1042.7	668.5	85.4	0.0	1.000312
4500.0	866.1	17.6	14.7	83.2	1030.3	555.7	85.4	1.6	1.000305
5000.0	850.8	15.8	13.6	86.9	1019.5	664.6	85.4	3.1	1.000293
5500.0	835.6	14.9	13.1	89.2	1007.8	553.6	85.4	6.7	1.000293
6000.0	820.7	14.0	12.5	91.5	999.0	552.6	85.4	5.2	1.000283
6500.0	806.1	13.1	12.2	93.8	974.6	661.4	85.4	7.6	1.000283
7000.0	791.7	12.3	11.7	96.0	957.7	550.3	97.0	9.3	1.000278
7500.0	777.5	11.4	11.0	97.0	945.7	659.3	105.5	9.2	1.000272
8000.0	763.4	10.6	10.2	97.0	931.6	558.3	108.3	9.2	1.000265
8500.0	749.6	9.8	9.4	97.0	917.3	557.3	108.1	9.6	1.000260
9000.0	735.0	9.0	8.6	97.0	903.6	656.3	105.4	8.2	1.000254
9500.0	722.6	8.2	7.8	97.0	889.8	555.3	94.3	8.8	1.000249
10000.0	709.5	7.4	7.0	97.0	876.6	654.3	84.9	9.8	1.000243
10500.0	696.7	6.8	6.4	97.0	862.6	553.5	79.6	10.7	1.000239
11000.0	683.9	6.8	6.4	97.0	846.5	553.5	75.9	11.6	1.000235
11500.0	671.3	5.6	5.1	96.5	834.9	652.1	74.2	12.1	1.000229
12000.0	659.0	4.3	3.7	96.2	823.5	550.4	78.2	11.3	1.000223
12500.0	646.8	3.3	1.7	99.0	811.7	549.1	82.5	10.5	1.000215
13000.0	634.8	2.5	0.2	94.2	799.2	548.1			1.000209
13500.0	623.0	1.8	-0.2	86.8	786.5	547.1			1.000205
14000.0	611.4	1.1	-0.7	87.8	771.9	646.3			1.000202
14500.0	599.9	1.1	-2.0	79.5	759.5	545.2			1.000196

MANDATORY LEVELS  
 1710020337  
 WHITE SANDS  
 TABLE 18

STATION ALTITUDE 3200 FEET MSL  
 19 JUNE 84  
 ASCENSION NO. 337

GEODETIC COORDINATES  
 32.60043 LAT DEG  
 106.37033 LONG DEG

PRESSURE GEOPOTENTIAL MILLIBARS	FEET	TEMPERATURE		REL. HUM. PERCENT	WIND DATA	
		AIR DEGREES CENTIGRADE	DEWPOINT CENTIGRADE		DIRECTION DEGREES(TN)	SPEED KNOTS
850.0	5042.	15.7	13.5	87.	85.4	3.2
800.0	6708.	12.8	11.0	95.	91.3	7.9
750.0	8483.	9.3	9.4	97.	104.1	8.6
700.0	10360.	5.8	6.4	97.	87.7	10.5
650.0	12355.	3.5	2.3	92.	81.5	10.7
600.0	14480.	1.1	-2.0	80.		

STATION ALTITUDE 1007.70 FEET MSL  
 19 JUNE 64 0910 MDT  
 RECEIVING NO. 105

SIGNIFICANT LEVEL DATA  
 171004010R  
 S W 0

GEOMETRIC COORDINATES  
 32.48034 LAT DEG  
 106.42107 LON DEG

TABLE 19

PRESSURE MILLIBARS	GEOMETRIC ALTITUDE MSL FEET	TEMPERATURE		REL. HUM. PERCENT
		AIR DEGREES CENTIGRADE	DEWPOINT	
81.0	1907.3	15.8	16.2	85.0
80.0	4058.3	15.0	15.6	86.0
75.0	5074.3	16.4	14.6	89.0
76.0	4077.3	10.8	10.5	92.0
70.0	10286.4	7.0	6.7	98.0
467.4	11674.5	5.1	4.5	96.0
634.7	13075.6	2.2	.4	88.0

STATION ALTITUDE 3097.70 FEET WSL  
 40 JUN 94 0910 MDT  
 DIMENSION NO. 105

UPPER AIR DATA  
 171004Z0905  
 S M N

GEOMETRIC COORDINATES  
 32.48034 LAT NEG  
 104.62107 LONG NEG

TABLE 20

GEOMETRIC ALTITUDE WSL FEET	PRESSURE MILLIBARS	TEMPERATURE °C	TEMPERATURE DEGREE CENTIGRADE	REL. HUM. PERCENT	DENSITY CM/CM <sup>3</sup> WET	SPEED OF SOUND KNOTS	WIND DIRECTION DEG	WIND SPEED KNOTS	INDEX OF REFRACTION
1007.7	881.0	19.8	16.2	85.0	1066.0	648.3	330.0	4.0	1.000315
1000.0	891.1	19.8	16.2	85.0	1064.0	648.3	330.0	4.0	1.000315
950.0	845.7	17.3	15.2	87.6	1031.7	666.6	338.5	4.0	1.000107
900.0	851.0	14.5	14.6	88.0	1014.4	665.6	1.7	7.3	1.000392
850.0	875.9	15.5	14.0	80.6	1001.6	664.3	63.7	1.8	1.000296
800.0	871.0	14.6	13.3	81.0	984.0	663.2	102.3	7.2	1.000290
750.0	804.7	13.7	12.6	87.6	972.6	662.1	114.8	5.1	1.000284
700.0	701.0	12.7	11.9	84.5	958.6	660.9	117.6	6.4	1.000278
650.0	773.8	11.8	11.2	86.6	946.7	659.8	118.0	7.7	1.000273
600.0	743.0	10.9	10.5	87.0	933.1	658.6	116.6	8.6	1.000267
550.0	750.1	10.1	9.9	88.0	917.0	657.6	102.8	8.8	1.000261
500.0	736.5	9.2	9.0	88.0	903.7	656.6	97.3	9.4	1.000256
450.0	733.1	8.4	8.1	89.0	890.5	655.6	82.2	10.8	1.000250
400.0	719.0	7.6	7.3	88.0	874.1	654.6	72.3	12.6	1.000245
350.0	802.1	6.8	6.5	87.8	862.7	653.6	73.0	14.5	1.000239
300.0	685.3	6.1	5.7	87.0	849.3	652.7	75.5	14.1	1.000234
250.0	671.7	5.4	4.8	86.3	834.1	651.7	77.6	14.7	1.000228
200.0	659.7	4.6	3.5	84.1	823.0	650.5			1.000222
150.0	647.1	3.3	2.0	81.1	811.0	649.1			1.000216
100.0	635.1	2.3	0.5	88.2	800.3	647.8			1.000210

STATION ALTITUDE 1007.70 FEET MSL  
 12 JUN 64  
 STATION NO. 100

0910 MDT

MANDATORY LEVELS  
 171000Z  
 C M P

TABLE 21

GEODETIC COORDINATES  
 37.48034 LAT DEG  
 106.67107 LONG DEG

PRESSURE MILLIBARS	GEOMETRICAL FEET	TEMPERATURE AFO DEGREES CENTIGRADE	TEMPERATURE DEWPOINT CENTIGRADE	REL. HUM. PERCENT	WIND DATA	
					DIRECTION DEGREES(TM)	SPEED KNOTS
500.0	5033.	14.4	14.4	89.	4.3	2.2
600.0	6720.	13.7	13.3	94.	114.3	5.8
750.0	8608.	10.0	9.7	98.	102.8	8.8
900.0	10374.	7.0	6.7	98.	74.5	14.0
950.0	12170.	3.4	3.4	92.		

STATION ALTITUDE 3000 FEET ASL  
 17 JUNE 54  
 ASCENSION NO. 335

SIGNIFICANT LEVEL DATA  
 171000Z54  
 WHITE SANDS

GEOGETIC COORDINATES  
 32.62003 LAT DEG  
 106.37033 LON DEG

TABLE 22

PRESSURE MILLIBARS	GEOMETRIC ALTITUDE FSL FEET	TEMPERATURE AIR DEPTHT DEGREES CENTIGRADE	REL. HUM. PERCENT
381.3	3992.0	23.1	15.1
372.9	4256.1	17.7	14.0
350.0	5024.9	17.3	15.5
311.3	6309.2	12.9	12.3
294.5	6976.3	13.5	13.0
286.1	7271.3	12.1	11.5
255.9	8322.3	9.5	3.7
236.7	10123.3	3.1	7.5
200.0	13383.6	9.0	3.4
196.5	10598.2	7.0	5.6
159.7	11985.2	6.9	4.3
153.5	12372.1	6.9	4.2
147.5	12483.7	3.2	2.3
110.9	16039.2	2.2	.1
107.3	15086.5	.7	-2.7
875.0	15595.9	-.9	-3.4
558.9	16392.6	-.7	-8.6
537.5	17412.5	-2.5	-9.6
500.0	19298.9	-5.0	-16.7
452.0	21857.5	-12.7	-15.7
433.7	22507.5	-12.8	-25.3
430.7	23058.5	-13.9	-27.7
423.1	23512.9	-14.5	-36.3
413.1	24103.0	-15.5	-35.5
400.0	24905.5	-17.4	-34.4
399.6	26835.0	-22.5	-37.6
371.1	29042.7	-26.3	-43.4
328.6	29669.5	-27.2	-45.8
300.0	31786.2	-32.0	-49.8
265.3	34572.2	-37.4	-54.3
255.5	35453.6	-39.4	-56.0
250.0	35955.3	-40.5	
200.0	40843.2	-51.5	
161.9	42648.0	-55.2	
161.7	45303.0	-59.6	
158.3	45575.2	-50.3	
150.0	46840.2	-52.3	
145.0	47390.2	-62.6	
135.3	48857.5	-54.2	
119.5	51593.0	-59.1	

STATION ALTITUDE 3929.7 FEET MSL  
 19 JUNE 54  
 ASCENSION NO. 338

SIGNIFICANT LEVEL DATA  
 17102233P  
 WHITE SANDS

SEDPETIC COORDINATES  
 32.60043 LAT DEG  
 135.37033 LON DEG

TABLE 22 Cond't

PRESSURE MILLIBARS MSL FEET	GEOMETRIC ALTITUDE	TEMPERATURE		REL. HUM. PERCENT
		AIR	DEWPOINT	
		DEGREES CENTIGRADE		
110.3	52595.9	-73.4		
100.0	54906.5	-70.4		
84.2	59277.2	-70.4		
70.0	51951.2	-54.5		
53.4	67457.5	-50.5		
50.0	68635.4	-55.1		
41.0	73020.5	-54.5		
36.2	75550.1	-55.5		

UPPER AIR DATA  
 1710020338  
 WHITE SANDS  
 TABLE 23

STATION ALTITUDE 2927.0 FEET MSL  
 15 JUNE 54  
 ASCENSION NO. 338

GEODETIC COORDINATES  
 32.43065 LAT NEG  
 106.37033 LON NEG

GEOMETRIC ALTITUDE MSL FEET	PRESSURE MILLIBARS	TEMPERATURE AIR DEGREES CENTIGRADE	REL. HUM. PERCENT	DENSITY M/GM CUBIC METER	SPEED OF SOUND KNOTS	DIRECTION DEGREES (TN)	SPEED (KNOTS)	INDEX OF REFRACTION
3942.0	541.8	21.1	78.0	1030.3	559.3	0	0	1.000313
4002.0	391.5	23.0	78.0	1030.2	669.7	42.2	0	1.000312
4502.0	666.0	17.6	92.0	1030.2	555.7	42.2	1.5	1.000306
5000.0	850.8	17.5	92.7	1012.6	595.5	42.2	3.2	1.000304
5502.0	935.7	15.7	91.5	1000.5	556.5	42.2	6.8	1.000297
6000.0	320.9	14.0	94.3	989.1	552.4	54.4	5.9	1.000290
6502.0	506.2	13.1	96.3	974.5	661.4	35.2	8.1	1.000284
7002.0	791.8	13.1	97.0	956.3	551.5	96.5	3.1	1.000291
7500.0	777.6	11.8	96.8	946.4	559.8	106.5	8.1	1.000273
8002.0	763.6	11.2	96.3	929.5	559.0	97.8	5.9	1.000277
8500.0	742.8	10.5	95.8	914.2	558.3	39.5	5.4	1.000262
9002.0	715.3	10.0	95.4	900.5	557.5	95.5	7.2	1.000275
9500.0	723.0	9.3	95.1	886.5	555.5	37.8	7.5	1.000251
10000.0	709.9	8.3	95.3	873.7	655.5	92.5	7.8	1.000245
10500.0	697.0	7.9	96.5	859.1	555.0	94.6	8.1	1.000241
11000.0	594.2	6.4	96.7	848.3	553.0	94.4	8.5	1.000274
11500.0	671.7	5.6	96.4	835.2	652.1	95.0	3.4	1.000229
12000.0	652.4	5.9	96.6	822.2	551.2	97.5	10.0	1.000224
12500.0	547.2	3.2	93.9	812.4	549.0	107.7	9.9	1.000217
13000.0	575.2	2.9	91.3	798.4	548.6	119.0	9.5	1.000212
13500.0	522.4	2.5	88.8	784.5	548.1	134.7	8.6	1.000207
14000.0	511.9	2.2	86.2	771.0	647.7	144.4	5.5	1.000203
14500.0	600.4	1.5	92.5	759.7	545.8	157.0	3.4	1.000197
15000.0	599.6	0	78.5	746.7	645.9	133.6	1.6	1.000192
15500.0	573.1	-0.6	82.1	736.5	544.2	245.7	1.5	1.000189
16000.0	567.2	-0.9	58.8	723.5	543.8	249.2	3.4	1.000191
16500.0	555.5	-0.9	56.6	710.5	643.5	240.0	5.2	1.000175
17000.0	546.0	-1.2	57.6	599.4	542.5	242.5	5.5	1.000172
17500.0	535.7	-2.7	58.5	588.5	641.4	245.1	8.0	1.000147
18000.0	525.5	-3.5	56.2	677.3	540.2	249.0	9.0	1.000145
18500.0	515.4	-4.5	53.8	667.3	539.1	249.8	10.0	1.000141
19000.0	505.6	-5.5	51.6	656.9	637.9	248.8	10.7	1.000137
19500.0	495.9	-5.5	51.5	567.0	535.5	241.5	11.1	1.000154
20000.0	485.2	-7.9	56.1	537.5	635.0	231.5	11.5	1.000152
20500.0	475.8	-9.2	40.6	628.2	533.4	219.2	11.9	1.000150
21000.0	467.5	-10.5	44.7	619.1	511.9	209.2	12.7	1.000149
21500.0	458.4	-11.8	52.9	510.1	510.3	202.2	13.2	1.000145
22000.0	449.4	-12.7	44.3	600.4	509.0	199.7	13.9	1.000142
22500.0	440.5	-12.8	29.5	549.0	528.9	203.2	14.7	1.000135
23000.0	431.9	-13.7	30.5	579.5	527.5	205.0	15.9	1.000113

UPPER AIR DATA  
 171002338  
 WHITE SANDS

STATION ALTITUDE 3200.00 FEET MSL  
 15 JUNE 64  
 ASCENSION NO. 332

GEODETIC COORDINATES  
 32.40043 LAT DEG  
 106.37033 LON DEG

TABLE 23 Cont'd

GLOMETRIC ALTITUDE MSL FEET	PRESSURE MILLIBARS	AIR TEMPERATURE DEGREES CENTIGRADE	REL. HUM. PERCENT	DENSITY GM/CUBIC METER	SPEED OF SOUND KNOTS	DIR. OF WIND DEGREES (TV)	WIND SPEED (KNOTS)	INDEX OF REFRACTION
23500.0	423.3	-14.9	16.4	570.2	525.5	214.1	17.8	1.000129
24000.0	414.9	-15.3	16.0	560.5	625.6	217.4	17.7	1.000127
24500.0	406.6	-15.4	18.5	551.5	524.3	218.9	21.5	1.000125
25000.0	398.5	-17.0	21.1	542.1	622.8	215.0	23.0	1.000123
25500.0	390.4	-19.0	21.9	534.9	521.2	210.5	24.6	1.000121
26000.0	382.5	-20.3	22.7	526.3	519.5	205.5	25.6	1.000119
26500.0	374.7	-21.5	23.5	518.8	617.9	203.9	29.4	1.000117
27000.0	367.1	-22.8	23.6	510.5	515.5	203.4	32.6	1.000115
27500.0	359.5	-23.6	22.2	501.8	615.4	205.5	35.6	1.000113
28000.0	352.1	-24.5	20.9	497.2	514.6	208.9	40.0	1.000111
28500.0	344.5	-25.4	19.5	484.7	513.3	210.9	42.5	1.000109
29000.0	337.7	-25.2	18.1	476.4	612.2	212.5	43.8	1.000107
29500.0	330.7	-27.0	15.7	467.9	511.3	214.3	42.6	1.000105
30000.0	323.7	-28.0	15.0	459.0	510.0	215.2	41.3	1.000103
30500.0	315.9	-29.1	15.0	452.3	508.6	218.4	39.8	1.000101
31000.0	308.2	-30.2	15.0	444.3	507.2	220.1	40.1	1.000099
31500.0	300.7	-31.4	15.0	437.5	505.8	221.1	41.6	1.000098
32000.0	297.3	-32.4	15.0	430.1	504.5	222.0	43.5	1.000095
32500.0	290.9	-33.4	15.0	422.5	503.3	222.8	45.7	1.000094
33000.0	284.5	-34.4	15.0	415.2	502.0	221.7	46.9	1.000093
33500.0	278.5	-35.3	15.0	407.9	500.8	220.5	47.9	1.000091
34000.0	272.5	-35.3	15.0	400.3	509.6	219.7	50.2	1.000090
34500.0	266.6	-37.3	15.0	397.7	508.6	219.4	52.4	1.000088
35000.0	260.8	-38.4	15.0	389.0	507.0	221.5	56.2	1.000085
35500.0	255.1	-39.5	13.7**	380.4	595.5	221.4	55.8	1.000083
36000.0	249.5	-40.6		377.8	594.1	220.8	54.5	1.000082
36500.0	243.9	-41.7		367.1	592.7	220.6	53.3	1.000080
37000.0	238.4	-42.8		360.5	591.2	222.0	52.7	1.000060
37500.0	233.0	-44.0		354.2	589.8	223.4	52.3	1.000079
38000.0	227.8	-45.1		347.9	588.3	225.7	52.6	1.000077
38500.0	222.6	-46.2		341.7	586.9	228.0	52.0	1.000075
39000.0	217.6	-47.3		335.7	585.4	228.5	52.4	1.000073
39500.0	212.7	-48.5		329.3	584.0	229.1	51.8	1.000073
40000.0	207.9	-49.6		324.0	582.5	229.8	51.6	1.000072
40500.0	203.2	-50.7		319.2	581.0	230.4	51.5	1.000071
41000.0	198.6	-51.9		314.5	579.5	231.3	51.3	1.000070
41500.0	193.9	-53.0		309.9	578.0	232.3	51.2	1.000068
42000.0	189.4	-54.2		304.3	576.5	232.9	51.3	1.000067
42500.0	185.0	-55.3		299.9	575.0	233.3	51.7	1.000065
43000.0	180.6	-55.4		295.3	573.5	234.1	50.7	1.000065

\*\* AT LEAST ONE ASSUMED RELATIVE HUMIDITY VALUE WAS USED IN THE INTERPOLATION.

UPPER AIR DATA  
171000Z  
WHITE SANDS

STATION ALTITUDE 19 900 FEET MSL  
19 JUNE 84  
ASCENSION NO. 335

GEODETIC COORDINATES  
32.62063 LAT DEG  
106.37335 LON DEG

TABLE 23 Cont'd

GEOMETRIC ALTITUDE MSL FEET	PRESSURE MILLIBARS	TEMPERATURE AIR DEGREES CENTIGRADE	REL. HUM. PERCENT	DENSITY GM/CUBIC METER	SPEED OF SOUND KNOTS	WIND DIRECTION DEGREES(TM)	WIND SPEED KNOTS	INDEX OF REFRACTION
43500.0	175.4	-57.1		284.3	572.7	235.4	68.3	1.000045
44000.0	172.2	-57.8		278.5	571.7	235.4	46.9	1.000042
44500.0	168.1	-58.5		272.7	570.8	235.9	65.5	1.000041
45000.0	164.1	-59.2		257.1	559.9	237.9	65.7	1.000060
45500.0	160.2	-60.2		253.0	558.5	239.1	44.6	1.000053
46000.0	156.3	-61.2		254.9	557.1	240.9	61.8	1.000057
46500.0	152.5	-61.9		251.5	555.3	243.8	37.1	1.000055
47000.0	148.8	-62.4		246.7	555.6	244.8	32.9	1.000055
47500.0	145.2	-62.7		240.4	555.1	243.2	29.2	1.000056
48000.0	141.7	-63.3		235.1	554.4	239.9	25.4	1.000052
48500.0	138.2	-63.8		230.0	553.7	231.7	21.5	1.000051
49000.0	134.8	-64.5		225.1	552.8	220.8	18.3	1.000050
49500.0	131.5	-65.4		220.6	551.5	211.2	17.6	1.000049
50000.0	128.2	-66.4		215.9	550.4	201.7	17.0	1.000048
50500.0	125.1	-67.1		211.5	559.2	206.9	15.2	1.000047
51000.0	122.0	-68.0		207.2	557.9	208.9	13.6	1.000045
51500.0	119.0	-68.9		202.9	555.7	210.4	13.3	1.000045
52000.0	116.0	-69.5		198.6	555.9	212.1	13.1	1.000046
52500.0	113.1	-70.0		193.9	555.3	207.3	13.3	1.000043
53000.0	110.2	-70.4		189.6	554.7	201.5	13.6	1.000042
53500.0	107.4	-70.4		184.5	554.7	199.3	14.4	1.000041
54000.0	104.7	-70.4		180.0	554.7	200.2	15.3	1.000040
54500.0	102.1	-70.4		175.6	554.7	200.7	15.8	1.000039
55000.0	99.5	-70.4		171.0	554.7	201.3	15.9	1.000038
55500.0	97.0	-70.4		166.7	554.7	199.2	14.7	1.000037
56000.0	94.5	-70.4		162.5	554.7	193.1	12.3	1.000036
56500.0	92.2	-70.4		158.4	554.7	185.4	10.4	1.000035
57000.0	89.9	-70.4		154.6	554.7	182.3	10.0	1.000034
57500.0	87.6	-70.4		150.5	554.7	178.9	9.6	1.000034
58000.0	85.4	-70.4		146.7	554.7	159.1	8.6	1.000033
58500.0	83.3	-70.0		142.3	555.2	153.4	7.9	1.000032
59000.0	81.2	-69.2		138.7	555.3	134.5	7.9	1.000031
59500.0	79.2	-68.4		134.7	557.4	115.5	8.7	1.000030
60000.0	77.2	-67.6		130.9	558.5	100.5	10.3	1.000029
60500.0	75.3	-66.8		127.1	559.6	88.3	12.3	1.000028
61000.0	73.4	-65.0		123.5	563.7	79.8	16.7	1.000028
61500.0	71.6	-65.2		120.0	561.3	79.0	15.5	1.000027
62000.0	69.8	-64.2		116.5	562.8	78.7	15.2	1.000026
62500.0	68.1	-64.1		112.5	563.5	83.0	15.5	1.000025
63000.0	65.5	-63.7		110.5	563.5	91.3	14.1	1.000025

UPPER AIR DATA  
17170330  
WHTF SANDS

STATION ALTITUDE 3019.00 FEET "MSL"  
14 JUNE 82 0958 MDT  
ASCENSION NO. 332

GEODETTIC COORDINATES  
32.40043 LAT DEG  
135.17733 LON DEG

TABLE 23 Cont'd

GEOMETRIC ALTITUDE "MSL FEET	PRESSURE MILLIBARS	AIR TEMPERATURE DEGREES CELSIUS	REFLUM. PERCENT	DENSITY GM/CUBIC METER	SPEED OF SOUND KNOTS	WIND DIRECTION DEGREES(TW)	WIND SPEED (KNOTS)	INDEX OF REFRACTION
63500.0	54.9	-43.4		107.7	556.2	98.6	18.4	1.000024
64000.0	53.3	-63.0		104.9	556.7	95.7	14.0	1.000025
64500.0	61.8	-62.7		107.2	555.2	95.2	14.6	1.000023
65000.0	60.3	-62.3		99.5	555.7	93.1	15.4	1.000022
65500.0	58.5	-61.9		97.0	556.2	91.1	15.3	1.000022
66000.0	57.4	-61.5		94.5	555.7	91.1	15.7	1.000021
66500.0	55.0	-61.2		92.0	557.2	93.7	15.4	1.000020
67000.0	54.6	-60.8		89.7	557.7	95.4	16.2	1.000020
67500.0	53.3	-60.4		87.3	558.2	100.2	17.9	1.000019
68000.0	52.0	-59.8		84.5	570.4	103.8	19.5	1.000019
68500.0	50.8	-57.2		82.0	572.5	107.6	20.3	1.000018
69000.0	49.5	-56.0		79.5	574.0	113.0	20.6	1.000018
69500.0	45.4	-55.8		77.7	574.3	118.2	21.1	1.000017
70000.0	47.3	-55.7		75.8	574.5	117.9	17.8	1.000017
70500.0	45.2	-55.5		73.9	574.3	117.5	14.4	1.000015
71000.0	45.1	-55.3		72.1	575.0	110.2	11.8	1.000015
71500.0	44.1	-55.1		70.4	575.3	95.2	12.4	1.000015
72000.0	43.0	-54.9		59.7	575.3	57.5	15.9	1.000015
72500.0	42.0	-54.7		67.0	575.3	52.2	15.7	1.000015
73000.0	41.0	-54.5		55.6	575.1	53.3	17.5	1.000015
73500.0	40.1	-54.7		53.9	575.8	54.6	18.3	1.000014
74000.0	39.1	-54.9		52.5	575.5			1.000014
74500.0	38.2	-55.1		51.1	575.2			1.000014
75000.0	37.2	-55.3		50.7	575.0			1.000013
75500.0	35.5	-55.5		58.6	574.7			1.000013

MANDATORY LEVELS  
 17102013P  
 WHITE SANDS

STATION ALTITUDE 2945.0 FEET MSL  
 19 JUNE 84  
 ASCENSION NO. 356

GEODETIC COORDINATES  
 32.43043 LAT DEG  
 105.87733 LON DEG

TABLE 24

PRESSURE GEOPOTENTIAL		TEMPERATURE		REL. HUM.		WIND DATA	
MILLIBARS	FEET	AIR DEGREES CENTIGRADE	DWPOINT DEGREES CENTIGRADE	PERCENT	DIRECTION DEGREES(TW)	SPEED KNOTS	
857.0	5041.	17.3	15.5	89.	67.2	3.3	
807.0	6710.	13.3	12.8	97.	51.0	8.1	
757.0	8459.	10.5	10.0	95.	39.5	5.6	
707.0	10177.	9.0	8.4	95.	94.7	3.0	
657.0	12171.	6.7	4.0	95.	105.2	9.9	
607.0	14500.	1.5	-1.2	82.	157.5	3.3	
557.0	16789.	-1.6	-8.9	57.	242.3	5.0	
507.0	19262.	-6.0	-14.7	50.	244.1	11.1	
457.0	21935.	-12.7	-17.7	55.	199.4	13.3	
407.0	24867.	-17.4	-34.4	21.	217.2	22.8	
357.0	28096.	-24.7	-40.0	20.	209.4	40.7	
307.0	31726.	-32.0	-49.8	15.	221.7	62.5	
257.0	35877.	-40.5			220.9	56.7	
207.0	40748.	-51.5			231.0	51.4	
175.0	43552.	-57.3			235.8	47.5	
157.0	46712.	-62.3			245.3	46.3	
125.0	50371.	-67.2			204.8	15.2	
100.0	54735.	-70.6			201.1	15.9	
97.0	59087.	-69.8			126.4	3.2	
77.0	61737.	-66.5			78.8	15.1	
57.0	64845.	-62.2			92.9	15.5	
37.0	68575.	-55.1			110.9	20.5	
17.0	73243.	-56.7			56.4	18.3	

\*\* AT LEAST ONE ASSUMED RELATIVE HUMIDITY VALUE WAS USED IN THE INTERPOLATION.

STATION ALTITUDE 3997.73 FEET MSL  
 19 JUNE 54 0958 MDT  
 ASCENSION NC. 126

SIGNIFICANT LEVEL DATA  
 1710362105  
 S M R

GEODETIC COORDINATES  
 32.48034 LAT DEG  
 106.42307 LONG DEG

TABLE 25

PRESSURE MILLIBARS	GEOMETRIC ALTITUDE MSL FEET	TEMPERATURE AIR DEWPOINT DEGREES CENTIGRADE	REL. HUM. PERCENT
881.9	3997.3	21.4	59.0
975.4	4207.9	20.0	55.0
350.0	5019.6	17.0	79.0
413.5	5254.0	14.4	57.0
731.1	9211.5	8.8	77.0
710.3	9998.3	8.6	71.0
700.0	10396.1	8.5	73.0
575.9	11347.5	5.7	92.0
538.7	12872.1	3.9	95.0

STATION ALTITUDE 3997.33 FEET MSL  
 19 JUNE 84  
 ASCENSION NO. 106

UPPER AIR DATA  
 171006Z106  
 S M R

GEODETIC COORDINATES  
 32.43034 LAT DEG  
 106.42337 LON DEG

TABLE 26

GEOMETRIC ALTITUDE MSL FEET	PRESSURE MILLIBARS	TEMPERATURE AIR DEGREES DEFWPOINT CENTIGRADE	REL. HUM. PERCENT	DENSITY GM/CUBIC METER	SPEED OF SOUND MPTS	WIND DATA DIRFCTION DEGREES(TN)	SPEED <KNOTS	INDEX OF REFRACTION
3997.3	881.9	21.4	59.0	1035.1	671.2	00	0.0	1.003378
4000.0	881.8	21.4	59.0	1035.1	671.1	92.0	0.0	1.003378
4500.0	856.4	18.9	71.9	1026.2	658.1	92.0	1.1	1.003249
5000.0	831.2	17.1	78.5	1014.5	656.0	92.0	2.1	1.003295
5500.0	806.1	16.0	82.0	1000.5	654.7	92.0	3.2	1.003291
6000.0	781.3	15.0	85.3	986.4	653.5	92.0	4.2	1.003285
6500.0	756.7	14.0	87.8	972.4	652.3	92.2	5.3	1.003281
7000.0	732.2	13.0	89.5	958.2	651.1	95.8	5.0	1.003275
7500.0	707.9	12.1	91.2	944.3	650.0	100.5	5.7	1.003270
8000.0	683.9	11.1	92.9	930.5	658.8	97.8	7.6	1.003265
8500.0	659.2	10.2	94.5	917.0	657.7	97.1	9.0	1.003261
9000.0	634.7	9.2	96.3	903.7	656.5	79.5	13.6	1.003255
9500.0	610.4	8.7	97.5	889.4	655.8	75.0	13.1	1.003245
10000.0	586.3	8.0	98.0	874.5	655.3	74.7	13.4	1.003243
10500.0	562.3	7.4	98.1	859.0	655.2	73.7	14.7	1.003241
11000.0	538.6	7.4	98.1	846.0	654.1			1.003241
11500.0	515.1	5.5	92.4	833.3	653.0			1.003239
12000.0	491.7	5.5	93.7	820.8	651.9			1.003234
12500.0	468.6	4.6	95.0	808.5	650.8			1.003230

STATION ALTITUDE 3997.0 FEET MSL  
 19 JUNE 54 0958 MDT  
 ASCENSION NO. 106

MANDATORY LEVELS  
 1710060105  
 C M R

GEODETIC COORDINATES  
 32.68036 LAT DEG  
 106.62307 LON DEG

TABLE 27

PRESSURE GEOPOTENTIAL		TEMPERATURE	REL. HUM.	WIND DATA	
MILLIBARS	FEET	AIR DEGREES CENTIGRADE	DEWPOINT PERCENT	DIRECTION DEGREES(TV)	SPEED KNOTS
950.0	5025.	17.0	79.	92.0	2.2
900.0	5727.	13.5	89.	94.5	5.5
850.0	6506.	10.1	95.	86.9	9.0
800.0	7385.	8.6	73.	73.0	14.5
750.0	8389.	6.3	95.		