

AD-A149 508

MILITARY MANPOWER STATISTICS, SEPTEMBER, FY-84. (U)
WASHINGTON HEADQUARTERS SERVICE (DOD) DIR FOR INFO
OP & RPTS. SEP 84. DIOR/MO3-84/12

1/1

UNCLASSIFIED

F/G 5/9

N/L

1 OF 1

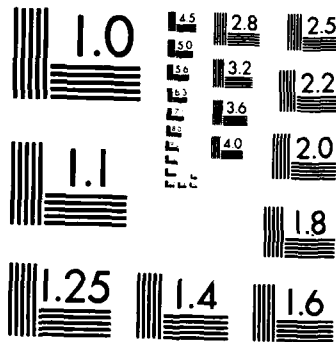
ADAM9 508

6

END
FILMED
11 04 85

1 OF 1

AD-A149 508



MICROCOPY RESOLUTION TEST CHART
NATIONAL BUREAU OF STANDARDS-1963-A

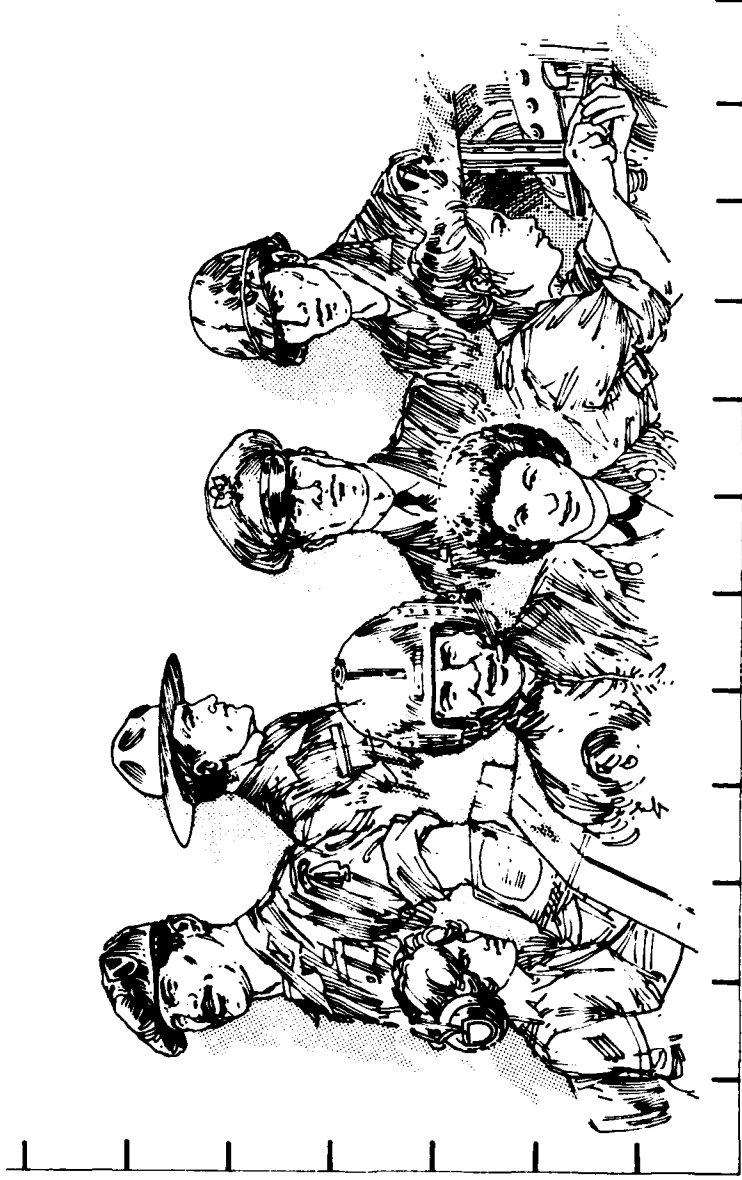
THIS REPORT IS UNCLASSIFIED AND
ITS DISTRIBUTION IS UNLIMITED

M03

Department of Defense

MILITARY MANPOWER STATISTICS

SEPTEMBER 1984



**Department of Defense
Military Manpower Statistics
September 1984**

Issued Quarterly by

**Washington Headquarters Services
Directorate for Information
Operations and Reports**

**For sale by the Superintendent of Documents
U.S. Government Printing Office
Washington, D.C. 20402**

FOREWORD

Military Manpower Statistics (MMS) is a quarterly publication generated from a computerized data base of manpower information. The MMS report consists of 26 statistical tables providing a variety of information on various aspects of DoD military manpower. In addition to summary data, detailed data are provided by Military Department or Defense component, type of personnel (officer, enlisted), grade, and location. Selected tables also provide data on women in the military.

**NOTE: Excluded from all total DoD strength figures for Fiscal Year 1984 are approximately 49,000 full-time military personnel who are paid from other than active duty military personnel appropriations. This group is funded from appropriations for reserve components and Corps of Engineers civil functions.*

T A B L E O F C O N T E N T S

<u>Active Duty Military Manpower Statistics</u>		<u>Page</u>
Table P10	Summary of Military Personnel	1
Table P11	Department of Defense Manpower Comparison	2
Table P11.1	Military and Civilian Direct Hire Civilian Personnel, by Component (Excluding the Military Departments), According to Type	3
Table P22.1	Total Active Duty Military Personnel by Service	4
Table P23.1	Active Duty Officer Personnel and Percent of Total Military Personnel, by Service	5
Table P23.3	Total Active Duty Military Personnel by Type	6
Table P23.4	Army Active Duty Military Personnel by Type	7
Table P23.5	Navy Active Duty Military Personnel by Type	8
Table P23.6	Marine Corps Active Duty Military Personnel by Type	9
Table P23.7	Air Force Active Duty Military Personnel by Type	10
Table P23.41	Army Active Duty Military Personnel	11
Table P23.51	Navy Active Duty Military Personnel	12
Table P23.61	Marine Corps Active Duty Military Personnel	13
Table P23.71	Air Force Active Duty Military Personnel	14
Table P25.6	Female Military Personnel on Active Duty, Officers and Enlisted, by Service	15

	<u>Page</u>
<u>Active Duty Military Manpower Statistics</u>	
Table P26.0	16
Table P26.02	17
Table P26.04	18
Table P26.05	19
Table P27.1	20
Table P27.21	22
Table P27.22	24
Table P27.23	26
Table P27.24	28
Table P29.20-29.34	30
Table P309A	33
Glossary of Terms	38

TABLE P10

DEPARTMENT OF DEFENSE
SUMMARY OF MILITARY PERSONNEL

	TOTAL DOD	ARMY	NAVY	MARINE CORPS	AIR FORCE
ACTIVE DUTY MILITARY AS OF JUL 31 1984					
OFFICER	303,457	107,414	69,380	20,355	106,308
ENLISTED	1,824,770	669,537	490,816	175,027	489,390
CADETS & MIDSHIPMEN	13,848	4,722	4,559	-	4,567
TOTAL ACTIVE DUTY MILITARY	2,142,075	781,673	564,755	195,382	600,265
ACTIVE DUTY MILITARY AS OF AUG 31 1984					
OFFICER	303,046	107,365	69,189	20,428	106,064
ENLISTED	1,827,025	672,565	491,281	174,913	488,266
CADETS & MIDSHIPMEN	13,752	4,746	4,510	-	4,496
TOTAL ACTIVE DUTY MILITARY	2,143,823	784,676	564,980	195,341	598,826
ACTIVE DUTY MILITARY AS OF SEP 30 1984					
OFFICER	303,344	107,883	68,856	20,366	106,239
ENLISTED	1,821,257	667,711	491,288	175,848	486,410
CADETS & MIDSHIPMEN	13,556	4,586	4,494	-	4,476
TOTAL ACTIVE DUTY MILITARY	2,138,157	780,180	564,638	196,214	597,125

TABLE P11

DOD MANPOWER COMPARISON

(MILITARY & CIVIL FUNCTIONS) A/

DATE	TOTAL DOD	ARMY			NAVY AND MARINE CORPS			AIR FORCE			OTHER DoD ORGANIZATIONS	
		MILI-TARY	CIVIL-IAN B/	TOTAL	NAVY MILI-TARY	MARINE CORPS MILI-TARY	CIVIL-IAN B/	TOTAL	MILI-TARY	CIVIL-IAN B/		TOTAL
OCT 31 83	3,154,214	778,054	372,233	1,150,287	556,739	193,171	336,390	1,086,300	592,500	242,228	834,728	82,899
NOV 30 83	3,166,949	782,305	374,301	1,156,606	557,420	193,900	338,275	1,089,595	592,862	244,155	837,017	83,731
DEC 31 83	3,169,174	778,869	374,992	1,153,861	557,384	193,858	339,891	1,091,133	593,798	246,264	840,062	84,118
JAN 31 84	3,172,045	782,738	374,213	1,156,951	557,046	194,989	338,469	1,090,504	595,686	244,629	840,315	84,275
FEB 29 84	3,178,255	785,241	375,124	1,160,365	558,435	194,606	338,429	1,091,470	596,507	245,221	841,728	84,692
MAR 31 84	3,185,440	785,806	376,622	1,162,428	561,707	195,088	338,931	1,095,726	597,129	245,323	842,452	84,834
APR 30 84	3,187,215	782,611	378,432	1,161,043	562,197	195,415	339,778	1,097,390	598,120	245,357	843,477	85,305
MAY 31 84	3,202,238	783,703	386,250	1,169,953	563,167	195,666	341,720	1,100,553	598,668	246,978	845,646	86,086
JUN 30 84	3,214,557	781,147	395,615	1,176,762	567,355	195,897	344,241	1,107,493	598,859	252,521	851,380	86,922
JUL 31 84	3,221,507	781,673	400,307	1,181,980	564,755	195,382	345,569	1,105,706	600,265	254,384	854,649	79,172
AUG 31 84	3,218,062	784,676	395,825	1,180,501	564,980	195,341	343,463	1,103,784	598,826	248,860	847,686	86,091
SEP 30 84	3,181,904	780,180	376,961	1,157,141	564,638	196,214	337,213	1,098,065	597,125	242,622	839,747	86,951

A/ CIVIL FUNCTIONS INCLUDES CIVILIAN PERSONNEL ONLY.

B/ "TOTAL PAID EMPLOYEES" AS REPORTED OFFICIALLY TO THE OFFICE OF PERSONNEL MANAGEMENT; EXCLUDES OVERSEAS SUPPORT PERSONNEL (INDIRECT HIRE).

C/ CIVILIAN PERSONNEL ONLY. MILITARY PERSONNEL ASSIGNED TO OTHER DoD ORGANIZATIONS ARE REPORTED BY THEIR RESPECTIVE SERVICES.

TABLE P11.1

MILITARY AND DIRECT HIRE CIVILIAN PERSONNEL, BY COMPONENT (EXCLUDING THE MILITARY DEPARTMENTS), ACCORDING TO TYPE

SEPTEMBER 30, 1984

DEFENSE COMPONENT	TOTAL	CIVILIAN A/	TOTAL	MILITARY B/	
				OFFICER	ENLISTED
OSD & ORGANIZATIONS SERVICED BY OSD C/	5,601	3,585	2,016	1,452	564
DEFENSE AUDIOVISUAL AGENCY	279	269	10	10	-
DEFENSE COMMUNICATIONS AGENCY	3,564	1,850	1,714	552	1,162
DEFENSE CONTRACT AUDIT AGENCY	4,201	4,201	-	-	-
DEFENSE INTELLIGENCE AGENCY	5,045	3,019	2,026	1,323	703
DEFENSE INVESTIGATIVE SERVICE	3,325	3,298	27	1	26
DEFENSE LOGISTICS AGENCY	50,074	49,124	950	788	162
DEFENSE MAPPING AGENCY	9,314	8,856	458	197	261
DEFENSE NUCLEAR AGENCY	1,214	697	517	324	193
DOD DEPENDENTS SCHOOLS	11,267	11,267	-	-	-
UNIFORMED SERVICES UNIVERSITY OF THE HEALTH SCIENCES	931	785	146 D/	88	58
TOTAL	94,815	86,951	7,864	4,735	3,129

A/ INCLUDES PERSONNEL NOT SUBJECT TO OFFICE OF MANAGEMENT AND BUDGET (OMB) CEILING CONTROL.
 B/ MILITARY PERSONNEL ASSIGNED TO OTHER DOD ORGANIZATIONS ARE ALSO INCLUDED IN THE STRENGTH FIGURES FOR THE RESPECTIVE SERVICES.
 C/ SEE THE GLOSSARY FOR A LIST OF ORGANIZATIONS SERVICED BY OSD.
 D/ EXCLUDES STUDENTS.

TABLE P22.1

DEPARTMENT OF DEFENSE
TOTAL ACTIVE DUTY MILITARY PERSONNEL BY SERVICE

DATE	TOTAL DOD	ARMY	NAVY	MARINE CORPS	AIR FORCE
OCT 31 1983	2,120,464	778,054	556,739	193,171	592,500
NOV 30 1983	2,126,487	782,305	557,420	193,900	592,862
DEC 31 1983	2,123,909	778,869	557,384	193,858	593,798
JAN 31 1984	2,130,459	782,738	557,046	194,989	595,686
FEB 29 1984	2,134,789	785,241	558,435	194,606	596,507
MAR 31 1984	2,139,730	785,806	561,707	195,088	597,129
APR 30 1984	2,138,343	782,611	562,197	195,415	598,120
MAY 31 1984	2,141,204	783,703	563,167	195,666	598,668
JUN 30 1984	2,143,258	781,147	567,355	195,897	598,859
JUL 31 1984	2,142,075	781,673	564,755	195,382	600,265
AUG 31 1984	2,143,823	784,676	564,980	195,341	598,826
SEP 30 1984	2,138,157	780,180	564,638	196,214	597,125

TABLE P23.1
 DEPARTMENT OF DEFENSE
 ACTIVE DUTY OFFICER PERSONNEL AND PERCENT OF TOTAL MILITARY PERSONNEL, BY SERVICE

DATE	TOTAL DOD		ARMY		NAVY		MARINE CORPS		AIR FORCE	
	NUMBER	%	NUMBER	%	NUMBER	%	NUMBER	%	NUMBER	%
OCT 31 1983	298 896	14.1	105 424	13.5	68 504	12.3	20 012	10.4	104 956	17.7
NOV 30 1984	298 917	14.1	105 016	13.4	68 781	12.3	20 020	10.3	105 100	17.7
DEC 31 1984	298 811	14.1	104 997	13.5	68 682	12.3	20 002	10.3	105 130	17.7
JAN 31 1985	299 502	14.1	105 246	13.4	68 654	12.3	20 280	10.4	105 322	17.7
FEB 28 1985	299 191	14.0	105 038	13.4	68 735	12.3	20 207	10.4	105 161	17.6
MAR 31 1985	298 829	14.0	104 827	13.3	68 613	12.2	20 150	10.3	105 239	17.6
APR 30 1985	295 767	14.0	104 880	13.4	68 466	12.2	20 215	10.3	105 206	17.6
MAY 31 1985	303 045	14.2	106 728	13.6	69 688	12.4	20 274	10.4	106 355	17.8
JUN 30 1985	303 859	14.2	107 316	13.7	69 659	12.3	20 465	10.4	106 419	17.8
JUL 31 1985	303 457	14.2	107 414	13.7	69 380	12.3	20 355	10.4	106 308	17.7
AUG 31 1985	303 046	14.1	107 365	13.7	69 189	12.2	20 428	10.5	106 064	17.7
SEP 30 1985	303 344	14.2	107 883	13.8	68 856	12.2	20 366	10.4	106 239	17.8

TABLE P23.3

DEPARTMENT OF DEFENSE
TOTAL ACTIVE DUTY MILITARY PERSONNEL BY TYPE

DATE	TOTAL	OFFICERS	ENLISTED	A/ CADETS AND MIDSHIPMEN
OCT 31 1983	2,120,464	298,896	1,808,140	13,428
NOV 30 1983	2,126,487	298,917	1,814,197	13,373
DEC 31 1983	2,123,909	298,811	1,811,831	13,267
JAN 31 1984	2,130,459	299,502	1,817,772	13,185
FEB 29 1984	2,124,789	299,191	1,822,551	13,047
MAR 31 1984	2,139,730	298,829	1,827,897	13,004
APR 30 1984	2,138,343	298,767	1,826,639	12,937
MAY 31 1984	2,141,204	303,045	1,828,260	9,899
JUN 30 1984	2,143,258	303,859	1,830,051	9,348
JUL 31 1984	2,142,075	303,457	1,824,770	13,848
AUG 31 1984	2,143,820	303,046	1,827,025	13,752
SEP 30 1984	2,138,157	303,344	1,821,257	13,556

A/ CONSISTS OF THE FOLLOWING:
FOR ARMY - CADETS, U. S. MILITARY ACADEMY
FOR NAVY - MIDSHIPMEN, U. S. NAVAL ACADEMY
FOR AIR FORCE - CADETS, U. S. AIR FORCE ACADEMY

TABLE P23.4

DEPARTMENT OF DEFENSE
ARMY ACTIVE DUTY MILITARY PERSONNEL BY TYPE

DATE	TOTAL	OFFICERS	ENLISTED	CADETS U. S. MILITARY ACADEMY
OCT 31 1983	778,054	105,424	668,071	4,559
NOV 30 1983	782,305	105,016	672,758	4,531
DEC 31 1983	778,869	104,997	669,367	4,505
JAN 31 1984	782,738	105,246	672,995	4,497
FEB 29 1984	785,241	105,088	675,724	4,429
MAR 31 1984	785,806	104,827	676,573	4,406
APR 30 1984	782,611	104,880	673,335	4,396
MAY 31 1984	783,703	106,728	673,567	3,408
JUN 30 1984	781,147	107,316	670,467	3,364
JUL 31 1984	781,673	107,414	669,537	4,722
AUG 31 1984	784,676	107,365	672,565	4,746
SEP 30 1984	780,180	107,883	667,711	4,586

TABLE P23.5

DEPARTMENT OF DEFENSE
NAVY ACTIVE DUTY MILITARY PERSONNEL BY TYPE

DATE	TOTAL	OFFICERS	ENLISTED	MIDSHIPMEN U. S. NAVAL ACADEMY
OCT 31 1983	556,739	68,504	483,779	4,456
NOV 30 1983	557,420	68,781	484,183	4,456
DEC 31 1983	557,384	68,682	484,256	4,446
JAN 31 1984	557,046	68,654	483,952	4,440
FEB 29 1984	558,435	68,735	485,314	4,386
MAR 31 1984	561,707	68,613	488,726	4,368
APR 30 1984	562,197	68,466	489,401	4,330
MAY 31 1984	563,167	69,688	490,142	3,337
JUN 30 1984	567,355	69,659	494,438	3,258
JUL 31 1984	564,755	69,380	490,816	4,559
AUG 31 1984	564,980	69,189	491,281	4,510
SEP 30 1984	564,638	68,856	491,288	4,494

TABLE P23.6
 DEPARTMENT OF DEFENSE
 MARINE CORPS ACTIVE DUTY MILITARY PERSONNEL BY TYPE

DATE	TOTAL	OFFICERS	ENLISTED
OCT 31 1983	193,171	20,012	173,159
NOV 30 1983	193,900	20,020	173,880
DEC 31 1983	193,858	20,002	173,856
JAN 31 1984	194,989	20,280	174,709
FEB 29 1984	194,606	20,207	174,399
MAR 31 1984	195,088	20,150	174,938
APR 30 1984	195,415	20,215	175,200
MAY 31 1984	195,666	20,274	175,392
JUN 30 1984	195,897	20,465	175,432
JUL 31 1984	195,382	20,355	175,027
AUG 31 1984	195,341	20,428	174,913
SEP 30 1984	196,214	20,366	175,848

TABLE P23.7

DEPARTMENT OF DEFENSE
AIR FORCE ACTIVE DUTY MILITARY PERSONNEL BY TYPE

DATE	TOTAL	OFFICERS	ENLISTED	CADETS U.S.A.F. ACADEMY
OCT 31 1983	592,500	104,956	483,131	4,413
NOV 30 1983	592,862	105,100	483,376	4,386
DEC 31 1983	593,798	105,130	484,352	4,316
JAN 31 1984	595,686	105,322	486,116	4,248
FEB 29 1984	596,507	105,161	487,114	4,232
MAR 31 1984	597,129	105,239	487,660	4,230
APR 30 1984	598,120	105,206	488,703	4,211
MAY 31 1984	598,668	106,355	489,159	3,154
JUN 30 1984	598,859	106,419	489,714	2,726
JUL 31 1984	600,265	106,308	489,390	4,567
AUG 31 1984	598,826	106,064	488,266	4,496
SEP 30 1984	597,125	106,239	486,410	4,476

TABLE P23.41

DEPARTMENT OF DEFENSE
ARMY ACTIVE DUTY MILITARY PERSONNEL

REPORTED STRENGTH, AND ADJUSTMENTS TO REPORTED STRENGTH TO DERIVE "DIRECT PROGRAM STRENGTH"
CHARGEABLE TO APPROPRIATION "MILITARY PERSONNEL, ARMY"

DATE	REPORTED STRENGTH		(LESS) REIMBURSABLES		TOTAL	DIRECT PROGRAM STRENGTH CHARGEABLE TO APPROPRIATION "MILITARY PERSONNEL, ARMY"		CADETS U. S. MILITARY ACADEMY	
	TOTAL	OFFICER	ENLISTED	TOTAL		OFFICER	ENLISTED	OFFICER	ENLISTED
OCT 31 1983	778,054	471	300	777,283	104,953	667,771	104,953	667,771	4,559
NOV 30 1983	782,305	469	298	781,538	104,547	672,460	104,547	672,460	4,531
DEC 31 1983	778,869	469	288	778,112	104,528	669,079	104,528	669,079	4,505
JAN 31 1984	782,738	471	296	781,971	104,775	672,699	104,775	672,699	4,497
FEB 29 1984	785,241	469	295	784,477	104,619	675,429	104,619	675,429	4,429
MAR 31 1984	785,806	477	298	785,031	104,350	676,275	104,350	676,275	4,406
APR 30 1984	782,611	471	312	781,828	104,409	673,023	104,409	673,023	4,396
MAY 31 1984	783,703	482	296	782,925	106,246	673,271	106,246	673,271	3,408
JUN 30 1984	781,147	456	290	780,401	106,860	670,177	106,860	670,177	3,364
JUL 31 1984	781,673	451	291	780,931	106,963	669,246	106,963	669,246	4,722
AUG 31 1984	784,676	447	287	783,942	106,918	672,278	106,918	672,278	4,746
SEP 30 1984	780,180	464	288	779,428	107,419	667,423	107,419	667,423	4,586

TABLE P23.51

DEPARTMENT OF DEFENSE
NAVY ACTIVE DUTY MILITARY PERSONNEL

REPORTED STRENGTH, AND ADJUSTMENTS TO REPORTED STRENGTH TO DERIVE "DIRECT PROGRAM STRENGTH"
CHARGEABLE TO APPROPRIATION "MILITARY PERSONNEL, NAVY"

DATE	REPORTED STRENGTH		(LESS) REIMBURSABLES		DIRECT PROGRAM STRENGTH CHARGEABLE TO APPROPRIATION "MILITARY PERSONNEL, NAVY"		MIDSHIPMEN U.S. NAVAL ACADEMY
	TOTAL	OFFICER	ENLISTED	TOTAL	OFFICER	ENLISTED	
OCT 31 1983	556,739	409	1,064	555,266	68,095	482,715	4,456
NOV 30 1983	557,420	416	1,089	555,915	68,365	483,094	4,456
DEC 31 1983	557,384	421	1,077	555,886	68,261	483,179	4,446
JAN 31 1984	557,046	427	1,067	555,552	68,227	482,885	4,440
FEB 29 1984	558,435	431	1,060	556,944	68,304	484,254	4,386
MAR 31 1984	561,707	427	1,054	560,226	68,186	487,672	4,368
APR 30 1984	562,197	422	1,028	560,747	68,044	488,373	4,330
MAY 31 1984	563,167	423	1,020	561,724	69,265	489,122	3,337
JUN 30 1984	567,355	425	994	565,936	69,234	493,444	3,258
JUL 31 1984	564,755	425	1,000	563,330	68,955	489,816	4,559
AUG 31 1984	564,980	420	992	563,568	68,769	490,289	4,510
SEP 30 1984	564,638	409	992	563,237	68,447	490,296	4,494

TABLE P23.61

DEPARTMENT OF DEFENSE
MARINE CORPS ACTIVE DUTY MILITARY PERSONNEL

REPORTED STRENGTH, AND ADJUSTMENTS TO REPORTED STRENGTH TO DERIVE "DIRECT PROGRAM STRENGTH"
CHARGEABLE TO APPROPRIATION "MILITARY PERSONNEL, MARINE CORPS"

DATE	REPORTED STRENGTH	(LESS) REIMBURSABLES	DIRECT PROGRAM STRENGTH CHARGEABLE TO APPN. "MILITARY PERSONNEL, MARINE CORPS"	TOTAL	OFFICER	ENLISTED
OCT 31 1983	193,171	25	193,146	193,146	19,987	173,159
NOV 30 1983	193,900	24	193,875	193,875	19,996	173,879
DEC 31 1983	193,858	24	193,833	193,833	19,978	173,855
JAN 31 1984	194,989	26	194,962	194,962	20,254	174,708
FEB 29 1984	194,606	26	194,579	194,579	20,181	174,398
MAR 31 1984	195,088	24	195,063	195,063	20,126	174,937
APR 30 1984	195,415	24	195,390	195,390	20,191	175,199
MAY 31 1984	195,666	24	195,641	195,641	20,250	175,391
JUN 30 1984	195,897	24	195,872	195,872	20,441	175,431
JUL 31 1984	195,382	23	195,358	195,358	20,332	175,026
AUG 31 1984	195,341	23	195,317	195,317	20,405	174,912
SEP 30 1984	196,214	24	196,189	196,189	20,342	175,847

TABLE P23.71

DEPARTMENT OF DEFENSE
AIR FORCE ACTIVE DUTY MILITARY PERSONNEL

REPORTED STRENGTH, AND ADJUSTMENTS TO REPORTED STRENGTH TO DERIVE "DIRECT PROGRAM STRENGTH"
CHARGEABLE TO APPROPRIATION "MILITARY PERSONNEL, AIR FORCE"

DATE	REPORTED STRENGTH	(LESS) REIMBURSABLES	DIRECT PROGRAM STRENGTH CHARGEABLE TO APPROP. "MILITARY PERSONNEL, AIR FORCE"	OFFICER	ENLISTED	TOTAL	OFFICER	ENLISTED	CADETS U.S.A.F. ACADEMY
OCT 31 1983	592,500	-	592,500	104,956	483,131	592,500	104,956	483,131	4,413
NOV 30 1983	592,862	-	592,862	105,100	483,376	592,862	105,100	483,376	4,386
DEC 31 1983	593,798	-	593,798	105,130	484,352	593,798	105,130	484,352	4,316
JAN 31 1984	595,686	-	595,686	105,322	486,116	595,686	105,322	486,116	4,248
FEB 29 1984	596,507	-	596,507	105,161	487,114	596,507	105,161	487,114	4,232
MAR 31 1984	597,129	-	597,129	105,239	487,660	597,129	105,239	487,660	4,230
APR 30 1984	598,120	-	598,120	105,206	488,703	598,120	105,206	488,703	4,211
MAY 31 1984	598,668	-	598,668	106,355	489,159	598,668	106,355	489,159	3,154
JUN 30 1984	598,859	-	598,859	106,419	489,714	598,859	106,419	489,714	2,726
JUL 31 1984	600,265	-	600,265	106,308	489,390	600,265	106,308	489,390	4,567
AUG 31 1984	598,826	-	598,826	106,064	488,266	598,826	106,064	488,266	4,496
SEP 30 1984	597,125	-	597,125	106,239	486,410	597,125	106,239	486,410	4,476

TABLE P25.6

FEMALE MILITARY PERSONNEL ON ACTIVE DUTY, OFFICERS AND ENLISTED, BY SERVICE
 DEPARTMENT OF DEFENSE

DATE	TOTAL DOD			ARMY			NAVY			MARINE CORPS			AIR FORCE		
	TOTAL	OFF	MIDSHIPMEN	TOTAL	OFF	ENL & CADETS	TOTAL	OFF	ENL & MID-SHIPMEN	TOTAL	OFF	ENL	TOTAL	OFF	ENL & CADETS
OCT 31 83	198,492	27,305	171,187	76,273	9,521	66,752	47,171	6,410	40,761	8,828	623	8,205	66,220	10,751	55,469
NOV 30 83	199,717	27,445	172,272	77,010	9,553	67,457	47,438	6,463	40,975	8,890	615	8,275	66,379	10,814	55,565
DEC 31 83	199,458	27,374	172,084	76,665	9,543	67,122	47,650	6,447	41,203	8,842	616	8,226	66,301	10,768	55,533
JAN 31 84	200,271	27,493	172,778	77,173	9,572	67,601	47,778	6,462	41,316	8,855	642	8,213	66,465	10,817	55,648
FEB 29 84	200,654	27,557	173,097	77,224	9,645	67,579	48,015	6,476	41,539	8,917	643	8,274	66,498	10,793	55,705
MAR 31 84	200,630	27,509	173,121	76,882	9,599	67,283	48,226	6,493	41,733	8,974	640	8,371	66,511	10,777	55,734
APR 30 84	200,371	27,541	172,830	76,450	9,644	66,806	48,247	6,469	41,778	8,974	636	8,338	66,700	10,792	55,908
MAY 31 84	200,788	28,002	172,786	76,608	9,894	66,714	48,417	6,568	41,849	9,066	638	8,428	66,697	10,902	55,795
JUN 30 84	201,191	28,190	173,001	76,394	10,003	66,391	48,830	6,571	42,259	9,150	642	8,508	66,817	10,974	55,843
JUL 31 84	201,590	28,427	173,163	76,485	10,136	66,349	48,772	6,603	42,169	9,193	637	8,556	67,140	11,051	56,089
AUG 31 84	202,721	28,475	174,246	77,457	10,128	67,329	48,889	6,579	42,310	9,260	641	8,619	67,115	11,127	55,988
SEP 30 84	202,830	28,665	174,165	77,356	10,230	67,126	49,133	6,553	42,580	9,225	648	8,577	67,116	11,234	55,882

TABLE P26.0

DEPARTMENT OF DEFENSE
MILITARY PERSONNEL ON ACTIVE DUTY BY GRADE IN WHICH SERVING
SEPTEMBER 30, 1984

RANK/GRADE	TOTAL DOD	ARMY	NAVY	MARINE CORPS	AIR FORCE
GENERAL - ADMIRAL	35	12	8	2	13
LT GENERAL - VICE ADMIRAL	127	49	33	7	38
MAJ GENERAL - REAR ADMIRAL (U)	362	140	82	23	117
BRIG GENERAL - REAR ADMIRAL (L) A/	525	195	128	33	169
COLONEL - CAPTAIN	14,625	4,783	3,709	627	5,506
LIEUTENANT COL - COMMANDER	32,600	10,771	7,626	1,653	12,550
MAJOR - LT COMMANDER	52,339	16,913	12,855	3,051	19,520
CAPTAIN - LIEUTENANT	101,713	34,772	21,248	6,082	39,611
1st LIEUTENANT - LIEUTENANT (JG)	41,604	12,249	10,584	4,371	14,400
2nd LIEUTENANT - ENSIGN	39,522	12,600	9,501	3,106	14,315
CHIEF WARRANT OFFICER W-4	2,828	1,767	942	119	-
CHIEF WARRANT OFFICER W-3	5,467	4,278	978	211	-
CHIEF WARRANT OFFICER W-2	8,883	7,131	1,162	590	-
WARRANT OFFICER W-1	2,714	2,223	-	491	-
TOTAL OFFICERS	303,344	107,883	68,856	20,366	106,239
E-9	14,311	4,182	4,025	1,262	4,842
E-8	37,843	15,647	8,801	3,732	9,663
E-7	126,966	50,557	30,713	9,177	36,519
E-6	231,538	86,856	72,987	15,434	56,261
E-5	350,838	118,492	98,419	25,068	108,859
E-4	422,670	183,661	104,298	31,953	102,758
E-3	370,133	98,860	98,973	47,648	124,652
E-2	137,150	51,929	37,366	25,834	22,021
E-1	129,808	57,527	35,706	15,740	20,835
TOTAL ENLISTED	1,821,257	667,711	491,288	175,848	486,410
CADETS & MIDSHIPMEN	13,556	4,586	4,494	-	4,476
GRAND TOTAL	2,138,157	780,180	564,638	196,214	597,125

A/ INCLUDES THE NEWLY REESTABLISHED RANK OF COMMODORE.

TABLE P26.02

FEMALE MILITARY PERSONNEL ON ACTIVE DUTY BY GRADE IN WHICH SERVING
 DEPARTMENT OF DEFENSE
 SEPTEMBER 30, 1984

RANK/GRADE	TOTAL DOD	ARMY	NAVY	MARINE CORPS	AIR FORCE
GENERAL - ADMIRAL	-	-	-	-	-
LT GENERAL - VICE ADMIRAL	-	-	-	-	-
MAJ GENERAL - REAR ADMIRAL (U)	-	-	-	-	-
BRIG GENERAL - REAR ADMIRAL (L) A/	7	2	2	-	3
COLONEL - CAPTAIN	274	91	93	9	81
LIEUTENANT COL - COMMANDER	1,024	320	323	29	352
MAJOR - LT COMMANDER	3,491	1,192	1,174	63	1,062
CAPTAIN - LIEUTENANT	12,377	4,302	2,573	190	5,312
1st LIEUTENANT - LIEUTENANT (JG)	5,416	1,912	1,173	190	2,141
2nd LIEUTENANT - ENSIGN	5,778	2,168	1,194	133	2,283
CHIEF WARRANT OFFICER W-4	9	-	6	3	-
CHIEF WARRANT OFFICER W-3	22	14	5	3	-
CHIEF WARRANT OFFICER W-2	169	153	10	6	-
WARRANT OFFICER W-1	98	76	-	22	-
TOTAL OFFICERS	28,665	10,230	6,553	648	11,234
E-9	54	18	11	11	14
E-8	265	150	44	35	36
E-7	2,267	1,265	478	132	392
E-6	11,068	4,897	3,171	513	2,487
E-5	37,789	13,314	9,147	1,626	13,702
E-4	55,859	25,190	11,659	2,228	16,782
E-3	40,062	10,123	11,592	2,234	16,113
E-2	12,643	5,239	3,266	1,196	2,942
E-1	12,779	6,420	2,890	602	2,867
TOTAL ENLISTED	172,786	66,616	42,258	8,577	55,335
CADETS & MIDSHIPMEN	1,379	510	322	-	547
GRAND TOTAL	202,830	77,356	49,133	9,225	67,116

A/ INCLUDES THE NEWLY REESTABLISHED RANK OF COMMODORE.

TABLE P26.04

DEPARTMENT OF DEFENSE
MILITARY PERSONNEL ON ACTIVE DUTY BY GRADE IN WHICH SERVING

REGULAR A/

SEPTEMBER 30, 1984

RANK/GRADE	TOTAL DOD	ARMY	NAVY	MARINE CORPS	AIR FORCE
GENERAL - ADMIRAL	35	12	8	2	13
LT GENERAL - VICE ADMIRAL	125	48	33	6	38
MAJ GENERAL - REAR ADMIRAL (U)	359	138	81	23	117
BRIG GENERAL - REAR ADMIRAL (L) B/	521	192	127	33	169
COLONEL - CAPTAIN	14,229	4,638	3,640	623	5,328
LIEUTENANT COL - COMMANDER	31,086	10,110	7,351	1,625	12,000
MAJOR - LT COMMANDER	46,260	14,017	11,698	2,990	17,555
CAPTAIN - LIEUTENANT	58,816	13,276	15,219	5,256	25,065
1st LIEUTENANT - LIEUTENANT (JG)	14,797	4,725	4,906	2,241	2,925
2nd LIEUTENANT - ENSIGN	12,663	5,022	4,430	789	2,422
CHIEF WARRANT OFFICER W-4	2,538	1,487	933	118	-
CHIEF WARRANT OFFICER W-3	3,843	2,668	966	209	-
CHIEF WARRANT OFFICER W-2	2,678	937	1,154	587	-
WARRANT OFFICER W-1	502	11	-	491	-
TOTAL OFFICERS	188,452	57,281	50,546	14,993	65,632
E-5	14,257	4,178	3,992	1,247	4,840
E-8	37,701	15,633	8,700	3,715	9,653
E-7	126,505	50,518	30,340	9,139	36,508
E-6	230,774	86,821	72,348	15,369	56,236
E-5	347,657	118,474	95,776	24,949	108,458
E-4	415,912	183,648	97,646	31,923	102,695
E-3	352,477	98,817	82,033	47,613	124,014
E-2	129,709	51,880	30,009	25,822	21,998
E-1	122,386	57,390	28,643	15,724	20,629
TOTAL ENLISTED	1,777,378	667,359	449,487	175,501	485,031
CADETS & MIDSHIPMEN	13,556	4,586	4,494	-	4,476
REGULAR TOTAL	1,979,386	729,226	504,527	190,494	555,139

A/ REGULAR PLUS RETIRED REGULAR OFFICERS ON ACTIVE DUTY.

B/ INCLUDES THE NEWLY REESTABLISHED RANK OF COMMODORE.

TABLE P26.05
 DEPARTMENT OF DEFENSE
 MILITARY PERSONNEL ON ACTIVE DUTY BY GRADE IN WHICH SERVING
 RESERVE A/
 SEPTEMBER 30, 1984

RANK/GRADE	TOTAL DOD	ARMY	NAVY	MARINE CORPS	AIR FORCE
GENERAL - ADMIRAL	-	-	-	-	-
LT GENERAL - VICE ADMIRAL	2	1	-	1	-
MAJ GENERAL - REAR ADMIRAL (U)	3	2	1	-	-
BRIG GENERAL - REAR ADMIRAL (L) B/	4	3	1	-	-
COLONEL - CAPTAIN	396	145	69	4	178
LIEUTENANT COL - COMMANDER	1,514	661	275	28	550
MAJOR - LT COMMANDER	6,079	2,896	1,157	61	1,965
CAPTAIN - LIEUTENANT	42,897	21,496	6,029	826	14,546
1st LIEUTENANT - LIEUTENANT (JG)	26,807	7,524	5,678	2,130	11,475
2nd LIEUTENANT - ENSIGN	26,859	7,578	5,071	2,317	11,893
CHIEF WARRANT OFFICER W-4	290	280	9	1	-
CHIEF WARRANT OFFICER W-3	1,624	1,610	12	2	-
CHIEF WARRANT OFFICER W-2	6,205	6,194	8	3	-
WARRANT OFFICER W-1	2,212	2,212	-	-	-
TOTAL OFFICERS	114,892	50,602	18,310	5,373	40,607
E-9	54	4	33	15	2
E-8	142	14	101	17	10
E-7	461	39	373	38	11
E-6	764	35	639	65	25
E-5	3,181	18	2,643	119	401
E-4	6,758	13	6,652	30	63
E-3	17,656	43	16,940	35	638
E-2	7,441	49	7,357	12	23
E-1	7,422	137	7,063	16	206
TOTAL ENLISTED	43,879	352	41,801	347	1,379
RESERVE TOTAL	158,771	50,954	60,111	5,720	41,986

A/ INCLUDES RESERVE NATIONAL GUARD, AUS, AND AFUS OFFICERS ON ACTIVE DUTY.
 B/ INCLUDES THE NEWLY REESTABLISHED RANK OF COMMODORE.

TABLE P27.1
 DEPARTMENT OF DEFENSE
 SUMMARY OF ENLISTED PERSONNEL PROCUREMENT
 FISCAL YEAR 1984

	OCT 1983	NOV 1983	DEC 1983	JAN 1984	FEB 1984	MAR 1984
TOTAL DEPARTMENT OF DEFENSE	50,561	44,618	38,142	48,277	45,652	49,923
INDUCTIONS	-	-	-	-	-	-
FIRST ENLISTMENTS	27,812	27,057	19,518	26,944	26,322	27,869
IMMEDIATE REENLISTMENTS	19,128	14,314	16,104	17,889	16,184	18,135
OTHER REENLISTMENTS	1,776	2,091	1,233	1,927	1,898	2,284
RESERVES TO ACTIVE DUTY A/	1,845	1,156	1,287	1,517	1,248	1,635
ARMY	20,679	21,130	13,230	20,949	20,583	20,474
INDUCTIONS	-	-	-	-	-	-
FIRST ENLISTMENTS	12,205	14,113	6,673	12,341	13,169	11,656
IMMEDIATE REENLISTMENTS	7,352	5,556	6,033	7,370	6,350	7,542
OTHER REENLISTMENTS	1,009	1,426	498	1,149	1,019	1,181
RESERVES TO ACTIVE DUTY	33	35	26	89	45	95
NAVY	15,241	9,575	10,392	10,653	10,388	12,998
INDUCTIONS	-	-	-	-	-	-
FIRST ENLISTMENTS	7,391	5,167	4,663	4,548	5,264	7,399
IMMEDIATE REENLISTMENTS	5,605	2,875	4,098	4,367	3,460	3,489
OTHER REENLISTMENTS	570	483	474	469	593	707
RESERVES TO ACTIVE DUTY	1,675	1,050	1,157	1,269	1,071	1,403
MARINE CORPS	4,965	4,399	4,280	5,986	4,658	5,362
INDUCTIONS	-	-	-	-	-	-
FIRST ENLISTMENTS	3,560	3,099	2,607	4,280	2,633	3,245
IMMEDIATE REENLISTMENTS	1,166	1,153	1,447	1,371	1,762	1,753
OTHER REENLISTMENTS	132	87	133	197	148	244
RESERVES TO ACTIVE DUTY	107	60	93	138	115	120
AIR FORCE	9,676	9,514	10,240	10,689	10,023	11,089
INDUCTIONS	-	-	-	-	-	-
FIRST ENLISTMENTS	4,576	4,678	5,575	5,775	5,256	5,569
IMMEDIATE REENLISTMENTS	5,005	4,730	4,526	4,781	4,612	5,351
OTHER REENLISTMENTS	65	95	128	112	138	152
RESERVES TO ACTIVE DUTY	30	11	11	21	17	17

A/ INCLUDES NATIONAL GUARD.

TABLE P27.1

DEPARTMENT OF DEFENSE
SUMMARY OF ENLISTED PERSONNEL PROCUREMENT
FISCAL YEAR 1984

	APR 1984	MAY 1984	JUN 1984	JUL 1984	AUG 1984	SEP 1984
TOTAL DEPARTMENT OF DEFENSE	41,567	43,968	49,557	45,055	50,649	41,330
INDUCTIONS	-	-	-	-	-	-
FIRST ENLISTMENTS	20,130	23,460	26,686	24,033	30,944	24,412
IMMEDIATE REENLISTMENTS	18,505	17,328	18,466	18,158	16,768	14,881
OTHER REENLISTMENTS	1,418	1,468	1,666	984	854	469
RESERVES TO ACTIVE DUTY A/	1,514	1,712	2,739	1,880	2,083	1,568
ARMY	14,800	16,999	15,461	18,304	22,585	15,152
INDUCTIONS	-	-	-	-	-	-
FIRST ENLISTMENTS	6,518	9,794	8,982	10,909	16,477	10,677
IMMEDIATE REENLISTMENTS	7,510	6,231	5,768	6,871	5,783	4,270
OTHER REENLISTMENTS	750	930	686	469	286	129
RESERVES TO ACTIVE DUTY	22	44	25	55	39	76
NAVY	11,096	11,467	15,798	9,140	11,548	9,528
INDUCTIONS	-	-	-	-	-	-
FIRST ENLISTMENTS	5,276	5,700	8,826	4,137	5,803	4,408
IMMEDIATE REENLISTMENTS	4,166	4,133	4,468	3,672	3,573	3,603
OTHER REENLISTMENTS	327	286	705	263	344	152
RESERVES TO ACTIVE DUTY	1,327	1,348	1,799	1,068	1,828	1,365
MARINE CORPS	5,282	4,879	6,088	6,450	5,695	6,657
INDUCTIONS	-	-	-	-	-	-
FIRST ENLISTMENTS	3,075	2,908	3,620	3,880	3,616	4,467
IMMEDIATE REENLISTMENTS	1,821	1,498	1,427	1,885	1,728	1,915
OTHER REENLISTMENTS	235	171	159	158	176	167
RESERVES TO ACTIVE DUTY	151	302	882	527	175	108
AIR FORCE	10,389	10,623	12,210	11,161	10,821	9,993
INDUCTIONS	-	-	-	-	-	-
FIRST ENLISTMENTS	5,261	5,058	5,258	5,107	5,048	4,860
IMMEDIATE REENLISTMENTS	5,008	5,466	6,803	5,730	5,684	5,093
OTHER REENLISTMENTS	106	81	116	94	48	21
RESERVES TO ACTIVE DUTY	14	18	33	230	41	19

A/ INCLUDES NATIONAL GUARD.

TABLE P27.21

DEPARTMENT OF DEFENSE
ARMY ENLISTED PERSONNEL PROCUREMENT
FISCAL YEAR 1984

	OCT 1983	NOV 1983	DEC 1983	JAN 1984	FEB 1984	MAR 1984
TOTAL	20,679	21,130	13,230	20,949	20,583	20,474
REGULAR ENL. AND REENL. - TOTAL	20,646	21,095	13,204	20,860	20,538	20,379
FIRST ENLISTMENTS	12,285	14,113	6,673	12,341	13,169	11,656
REENLISTMENTS - TOTAL	8,361	6,982	6,531	8,519	7,369	8,723
IMMEDIATE REENLISTMENTS	7,352	5,556	6,033	7,370	6,350	7,542
FORMER REGULAR FORMER RESERVE & N.G. FORMER INDUCTEE	7,351 1 -	5,556 - -	6,033 - -	7,369 1 -	6,349 1 -	7,542 - -
REENL. OTHER THAN IMMEDIATE	1,009	1,426	498	1,149	1,019	1,181
WITHIN 2-90 DAYS AFTER SEPARATION	53	61	17	62	61	63
FORMER REGULAR	9	16	7	14	13	9
FORMER RESERVE & N.G.	37	34	7	31	37	46
FORMER INDUCTEE	3	8	1	8	11	4
FORMER OFFICER	4	3	2	9	-	4
OVER 90 DAYS AFTER SEPARATION	956	1,365	481	1,087	958	1,118
RESERVES AND N.G. CALLS	33	35	26	89	45	95

TABLE P27.21

DEPARTMENT OF DEFENSE
ARMY ENLISTED PERSONNEL PROCUREMENT
FISCAL YEAR 1984

	APR 1984	MAY 1984	JUN 1984	JUL 1984	AUG 1984	SEP 1984
TOTAL	14,800	16,999	15,461	18,304	22,585	15,152
REGULAR ENL. AND REENL. - TOTAL	14,778	16,955	15,436	18,249	22,546	15,076
FIRST ENLISTMENTS	6,518	9,794	8,982	10,909	16,477	10,677
REENLISTMENTS - TOTAL	8,260	7,161	6,454	7,340	6,069	4,399
IMMEDIATE REENLISTMENTS	7,510	6,231	5,768	6,871	5,783	4,270
FORMER REGULAR FORMER RESERVE & N.G. FORMER INDUCTEE	7,508 2 -	6,231 - -	5,768 - -	6,869 2 -	5,783 - -	4,270 - -
REENL. OTHER THAN IMMEDIATE	750	930	686	469	286	129
WITHIN 2-90 DAYS AFTER SEPARATION	47	41	23	18	15	11
FORMER REGULAR FORMER RESERVE & N.G. FORMER INDUCTEE FORMER OFFICER	19 20 4 4	12 19 8 2	10 10 - 3	6 9 2 1	3 6 3 3	4 3 1 3
OVER 90 DAYS AFTER SEPARATION	703	889	663	451	271	118
RESERVES AND N.G. CALLS	22	44	25	55	39	76

TABLE P27.22

DEPARTMENT OF DEFENSE
NAVY ENLISTED PERSONNEL PROCUREMENT
FISCAL YEAR 1984

	OCT 1983	NOV 1983	DEC 1983	JAN 1984	FEB 1984	MAR 1984
TOTAL	15,241	9,575	10,392	10,653	10,388	12,998
REGULAR ENL. AND REENL. - TOTAL	13,566	8,525	9,235	9,384	9,317	11,595
FIRST ENLISTMENTS	7,391	5,167	4,663	4,548	5,264	7,399
REENLISTMENTS - TOTAL	6,175	3,358	4,572	4,836	4,053	4,196
IMMEDIATE REENLISTMENTS	5,605	2,875	4,098	4,367	3,460	3,489
FORMER REGULAR FORMER RESERVE	5,154 451	2,666 209	3,816 282	3,943 424	3,247 213	3,211 278
REENL. OTHER THAN IMMEDIATE	570	483	474	469	593	707
WITHIN 2-90 DAYS AFTER SEPARATION	107	69	61	78	60	81
FORMER REGULAR FORMER RESERVE	107	69	61	78	60	81
OVER 90 DAYS AFTER SEPARATION	463	414	413	391	533	626
RESERVES TO ACTIVE DUTY	1,675	1,050	1,157	1,269	1,071	1,403
FIRST ENLISTMENTS REENLISTMENTS REPORTED TO ACTIVE DUTY	268 1,407	122 928	157 1,000	166 1,103	116 955	136 1,267

TABLE P27.22
 DEPARTMENT OF DEFENSE
 NAVY ENLISTED PERSONNEL PROCUREMENT
 FISCAL YEAR 1984

	APR 1984	MAY 1984	JUN 1984	JUL 1984	AUG 1984	SEP 1984
TOTAL	11,096	11,467	15,798	9,140	11,548	9,528
REGULAR ENL. AND REENL. - TOTAL	9,769	10,119	13,999	8,072	9,720	8,163
FIRST ENLISTMENTS	5,276	5,700	8,826	4,137	5,803	4,408
REENLISTMENTS - TOTAL	4,493	4,419	5,173	3,935	3,917	3,755
IMMEDIATE REENLISTMENTS	4,166	4,133	4,468	3,672	3,573	3,603
FORMER REGULAR	3,851	3,802	4,175	3,452	3,294	3,389
FORMER RESERVE	315	331	293	220	279	214
REENL. OTHER THAN IMMEDIATE	327	286	705	263	344	152
WITHIN 2-90 DAYS AFTER SEPARATION	24	44	79	39	40	25
FORMER REGULAR	24	44	79	39	40	25
FORMER RESERVE	-	-	-	-	-	-
OVER 90 DAYS AFTER SEPARATION	303	242	626	224	304	127
RESERVES TO ACTIVE DUTY	1,327	1,348	1,799	1,068	1,828	1,365
FIRST ENLISTMENTS	-	-	-	-	-	-
REENLISTMENTS	135	139	171	124	144	135
REPORTED TO ACTIVE DUTY	1,192	1,209	1,628	944	1,684	1,230

TABLE P27.23
 DEPARTMENT OF DEFENSE
 MARINE CORPS ENLISTED PERSONNEL PROCUREMENT
 FISCAL YEAR 1984

	OCT 1983	NOV 1983	DEC 1983	JAN 1984	FEB 1984	MAR 1984
TOTAL	4,965	4,399	4,280	5,986	4,658	5,362
REGULAR ENL. AND REENL. - TOTAL	4,858	4,339	4,187	5,848	4,543	5,242
FIRST ENLISTMENTS	3,560	3,099	2,607	4,280	2,633	3,245
REENLISTMENTS - TOTAL	1,298	1,240	1,580	1,568	1,910	1,997
IMMEDIATE REENLISTMENTS	1,166	1,153	1,447	1,371	1,762	1,753
FORMER REGULAR A/ FORMER RESERVE	1,130	1,149	1,444	1,366	1,759	1,750
FORMER INDUCTEE	36	4	3	5	3	3
REENL. OTHER THAN IMMEDIATE	132	87	133	197	148	244
WITHIN 2-90 DAYS AFTER SEPARATION	3	-	1	4	1	1
FORMER REGULAR	3	-	1	4	1	1
FORMER RESERVE	-	-	-	-	-	-
FORMER INDUCTEE	-	-	-	-	-	-
OVER 90 DAYS AFTER SEPARATION	129	87	132	193	147	243
RESERVES TO ACTIVE DUTY	107	60	93	138	115	120
FIRST ENLISTMENTS REENLISTMENTS REPORTED TO ACTIVE DUTY	- 1 106	- 4 56	- 2 91	- - 138	- 2 113	- 1 119

A/ INCLUDES EXTENSIONS FOR WHICH REENLISTMENT BONUS IS PAID.
 B/ INCLUDES ENLISTMENTS OF FORMER OFFICERS.

TABLE P27.23
 DEPARTMENT OF DEFENSE
 MARINE CORPS ENLISTED PERSONNEL PROCUREMENT
 FISCAL YEAR 1984

	APR 1984	MAY 1984	JUN 1984	JUL 1984	AUG 1984	SEP 1984
TOTAL	5,282	4,879	6,088	6,450	5,695	6,657
REGULAR ENL. AND REENL. - TOTAL	5,131	4,577	5,206	5,923	5,520	6,549
FIRST ENLISTMENTS	3,075	2,908	3,620	3,880	3,616	4,467
REENLISTMENTS - TOTAL	2,056	1,669	1,586	2,043	1,904	2,082
IMMEDIATE REENLISTMENTS	1,821	1,498	1,427	1,885	1,728	1,915
FORMER REGULAR A/ FORMER RESERVE FORMER INDUCTEE	1,819 2 -	1,496 2 -	1,423 4 -	1,882 3 -	1,722 6 -	1,912 3 -
REENL. OTHER THAN IMMEDIATE	235	171	159	158	176	167
WITHIN 2-90 DAYS AFTER SEPARATION	6	18	20	19	27	24
FORMER REGULAR FORMER RESERVE FORMER INDUCTEE	6 - -	15 3 -	17 3 -	16 3 -	24 3 -	22 2 -
OVER 90 DAYS AFTER SEPARATION	229	153	139	139	149	143
RESERVES TO ACTIVE DUTY	151	302	882	527	175	108
FIRST ENLISTMENTS REENLISTMENTS REPORTED TO ACTIVE DUTY	- 3 148	- 1 301	- - 882	- - 527	- - 173	- 2 106

A/ INCLUDES EXTENSIONS FOR WHICH REENLISTMENT BONUS IS PAID.
 B/ INCLUDES ENLISTMENTS OF FORMER OFFICERS.

TABLE P27.24

DEPARTMENT OF DEFENSE
AIR FORCE ENLISTED PERSONNEL PROCUREMENT
FISCAL YEAR 1984

	OCT 1983	NOV 1983	DEC 1983	JAN 1984	FEB 1984	MAR 1984
TOTAL	9,676	9,514	10,240	10,689	10,023	11,089
REGULAR ENL. AND REENL. - TOTAL	9,646	9,503	10,229	10,668	10,006	11,072
FIRST ENLISTMENTS	4,576	4,678	5,575	5,775	5,256	5,569
REENLISTMENTS - TOTAL	5,070	4,825	4,654	4,893	4,750	5,503
IMMEDIATE REENLISTMENTS	5,005	4,730	4,526	4,781	4,612	5,351
FORMER REGULAR FORMER RESERVE & N.G.	5,000 5	4,728 2	4,522 4	4,780 1	4,611 1	5,347 4
REENL. OTHER THAN IMMEDIATE	65	95	128	112	138	152
OVER 90 DAYS AFTER SEPARATION A/	65	95	128	112	138	152
RESERVES & N.G. TO ACTIVE DUTY	30	11	11	21	17	17

A/ INCLUDES ENLISTMENTS OF FORMER COMMISSIONED AND WARRENT OFFICERS.

TABLE P27.24

DEPARTMENT OF DEFENSE
AIR FORCE ENLISTED PERSONNEL PROCUREMENT
FISCAL YEAR 1984

	APR 1984	MAY 1984	JUN 1984	JUL 1984	AUG 1984	SEP 1984
TOTAL	10,389	10,623	12,210	11,161	10,821	9,993
REGULAR ENL. AND REENL. - TOTAL	10,375	10,605	12,177	10,931	10,780	9,974
FIRST ENLISTMENTS	5,261	5,058	5,258	5,107	5,048	4,860
REENLISTMENTS - TOTAL	5,114	5,547	6,919	5,824	5,732	5,114
IMMEDIATE REENLISTMENTS	5,008	5,466	6,803	5,730	5,684	5,093
FORMER REGULAR FORMER RESERVE & N.G.	5,007	5,462	6,803	5,723	5,680	5,088
REENL. OTHER THAN IMMEDIATE	106	81	116	94	48	21
OVER 90 DAYS AFTER SEPARATION A/	106	81	116	94	48	21
RESERVES & N.G. TO ACTIVE DUTY	14	18	33	230	41	19

A/ INCLUDES ENLISTMENTS OF FORMER COMMISSIONED AND WARRANT OFFICERS.

TABLE P29.20-29.34
DEPARTMENT OF DEFENSE
REENLISTMENT RATES BY SERVICE

	A/ "UNADJUSTED" REENLISTMENT RATES FOR TOTAL REGULARS				B/ "ADJUSTED" REENLISTMENT RATES FOR TOTAL REGULARS				
	TOTAL DOD	ARMY	NAVY	AIR FORCE	TOTAL DOD	ARMY	NAVY	MARINE CORPS	AIR FORCE
FY 1980									
ELIGIBLES	343,425	133,010	86,251	89,132	334,952	136,721	83,581	34,928	79,722
REENLISTMENTS	190,260	92,793	41,556	53,523	183,494	86,494	40,500	12,237	44,263
REENLISTMENT RATE	55.4%	62.2%	48.2%	60.0%	54.8%	63.3%	48.5%	35.0%	55.5%
FY 1981									
ELIGIBLES	341,428	116,743	94,303	93,549	339,304	131,957	90,462	36,395	80,490
REENLISTMENTS	206,917	77,892	51,519	61,599	206,315	93,105	49,039	15,510	48,661
REENLISTMENT RATE	60.6%	66.7%	54.6%	65.8%	60.8%	70.6%	54.2%	42.6%	60.5%
FY 1982									
ELIGIBLES	329,296	117,331	82,192	96,825	325,066	126,035	84,001	33,594	81,436
REENLISTMENTS	224,465	84,631	52,254	71,463	212,452	93,335	54,450	12,171	52,496
REENLISTMENT RATE	68.2%	72.1%	63.6%	73.8%	65.4%	74.1%	64.8%	36.2%	64.5%
FY 1983									
ELIGIBLES	327,636	128,084	75,173	94,643	324,238	144,379	79,977	30,460	69,422
REENLISTMENTS	223,760	82,369	51,201	74,544	220,054	98,661	55,446	16,592	49,355
REENLISTMENT RATE	68.3%	64.3%	68.1%	78.8%	67.9%	68.3%	69.3%	54.5%	71.1%
FY 1984									
ELIGIBLES	325,572	122,340	86,828	82,161	317,672	133,217	88,703	31,882	63,870
REENLISTMENTS	218,139	76,954	59,394	62,789	209,221	87,831	60,254	16,631	44,505
REENLISTMENT RATE	67.0%	62.9%	68.4%	76.4%	65.9%	65.9%	67.9%	52.2%	69.7%

A/ "UNADJUSTED REENLISTMENT RATE" - THE RATIO OF TOTAL REENLISTMENTS OCCURRING IN A GIVEN PERIOD TO TOTAL SEPARATIONS ELIGIBLE TO REENLIST IN THE SAME PERIOD, EXPRESSED AS A PERCENTAGE.

B/ "ADJUSTED REENLISTMENT RATE" - THE "UNADJUSTED" RATE ADJUSTED TO EXCLUDE THE EFFECTS OF: (1) EARLY SEPARATIONS FOR IMMEDIATE REENLISTMENTS AND (2) OTHER EARLY DISCHARGES OF ELIGIBLES UNDER EARLY RELEASE PROGRAMS.

TABLE P29.20-29.34
DEPARTMENT OF DEFENSE
REENLISTMENT RATES BY SERVICE

	A/ "UNADJUSTED" REENLISTMENT RATES FOR FIRST-TERM REGULARS					B/ "ADJUSTED" REENLISTMENT RATES FOR FIRST-TERM REGULARS				
	TOTAL DOD	ARMY	NAVY	MARINE CORPS	AIR FORCE	TOTAL DOD	ARMY	NAVY	MARINE CORPS	AIR FORCE
FY 1980										
ELIGIBLES	165,525	50,288	53,670	19,364	42,203	161,232	52,231	51,976	19,575	37,450
REENLISTMENTS	64,762	25,434	19,721	4,493	15,114	61,610	27,370	19,138	4,672	10,430
REENLISTMENT RATE	39.1%	50.6%	36.7%	23.2%	35.8%	38.2%	52.4%	36.8%	23.9%	27.9%
FY 1981										
ELIGIBLES	161,600	38,762	55,107	23,875	43,856	158,676	43,013	53,583	24,120	37,960
REENLISTMENTS	69,435	21,312	22,968	6,340	18,815	67,709	25,563	22,521	6,630	12,995
REENLISTMENT RATE	43.0%	55.0%	41.7%	26.6%	42.9%	42.7%	59.4%	42.0%	27.5%	34.2%
FY 1982										
ELIGIBLES	148,862	36,302	43,659	21,342	47,559	149,480	39,276	45,522	21,769	42,913
REENLISTMENTS	77,279	21,008	21,949	7,262	27,060	69,725	23,982	23,871	3,103	18,769
REENLISTMENT RATE	51.9%	57.9%	50.3%	34.0%	56.9%	46.6%	61.1%	52.4%	14.3%	43.7%
FY 1983										
ELIGIBLES	145,300	39,353	39,185	19,524	47,238	140,783	45,114	41,372	20,059	34,238
REENLISTMENTS	75,914	16,100	21,824	6,906	31,084	70,773	21,858	23,182	7,631	18,102
REENLISTMENT RATE	52.2%	40.9%	55.7%	35.4%	65.8%	50.3%	48.5%	56.0%	38.0%	52.9%
FY 1984										
ELIGIBLES	144,076	36,136	45,924	22,027	39,989	137,437	38,519	47,311	20,642	30,965
REENLISTMENTS	74,652	14,558	26,631	8,710	24,753	66,800	16,941	26,813	7,317	15,729
REENLISTMENT RATE	51.8%	40.3%	58.0%	39.5%	61.9%	48.6%	44.0%	56.7%	35.4%	50.8%

A/ "UNADJUSTED REENLISTMENT RATE" - THE RATIO OF TOTAL REENLISTMENTS OCCURRING IN A GIVEN PERIOD TO TOTAL SEPARATIONS ELIGIBLE TO REENLIST IN THE SAME PERIOD, EXPRESSED AS A PERCENTAGE.
B/ "ADJUSTED REENLISTMENT RATE" - THE "UNADJUSTED" RATE ADJUSTED TO EXCLUDE THE EFFECTS OF: (1) EARLY SEPARATIONS FOR IMMEDIATE REENLISTMENTS AND (2) OTHER EARLY DISCHARGES OF ELIGIBLES UNDER EARLY RELEASE PROGRAMS.

TABLE P29.20-29.34

DEPARTMENT OF DEFENSE
REENLISTMENT RATES BY SERVICE

	A/ "UNADJUSTED" REENLISTMENT RATES FOR CAREER REGULARS				B/ "ADJUSTED" REENLISTMENT RATES FOR CAREER REGULARS					
	TOTAL DOD	ARMY	NAVY	MARINE CORPS	AIR FORCE	TOTAL DOD	ARMY	NAVY	MARINE CORPS	AIR FORCE
FY 1980										
ELIGIBLES	177,900	82,722	32,581	15,668	46,929	173,720	84,490	31,605	15,353	42,272
REENLISTMENTS	125,498	57,359	21,835	7,895	38,409	121,884	59,124	21,362	7,565	33,833
REENLISTMENT RATE	70.5%	69.3%	67.0%	50.4%	81.8%	70.2%	70.0%	67.6%	49.3%	80.0%
FY 1981										
ELIGIBLES	179,828	77,981	39,196	12,958	49,693	180,628	88,944	36,879	12,275	42,530
REENLISTMENTS	137,482	56,580	28,551	9,567	42,784	138,606	67,542	26,518	8,880	35,666
REENLISTMENT RATE	76.5%	72.6%	72.8%	73.8%	86.1%	76.7%	75.9%	71.9%	72.3%	83.9%
FY 1982										
ELIGIBLES	180,434	81,029	38,533	11,606	49,266	175,586	86,759	38,479	11,825	38,523
REENLISTMENTS	147,186	63,623	30,305	8,855	44,403	142,727	69,353	30,579	9,068	33,727
REENLISTMENT RATE	81.6%	78.5%	78.6%	76.3%	90.1%	81.3%	79.9%	79.5%	76.7%	87.6%
FY 1983										
ELIGIBLES	182,336	88,731	35,988	10,212	47,405	183,455	99,265	38,605	10,401	35,184
REENLISTMENTS	147,846	66,269	29,377	8,740	43,460	149,281	76,803	32,264	8,961	31,253
REENLISTMENT RATE	81.1%	74.7%	81.6%	85.6%	91.7%	81.4%	77.4%	83.6%	86.2%	88.8%
FY 1984										
ELIGIBLES	181,496	86,204	40,904	12,216	42,172	180,235	94,698	41,392	11,240	32,905
REENLISTMENTS	143,487	62,396	32,763	10,292	38,036	142,421	70,890	33,441	9,314	28,776
REENLISTMENT RATE	79.1%	72.4%	80.1%	84.3%	90.2%	79.0%	74.9%	80.8%	82.9%	87.5%

A/ "UNADJUSTED REENLISTMENT RATE" - THE RATIO OF TOTAL REENLISTMENTS OCCURRING IN A GIVEN PERIOD TO TOTAL SEPARATIONS ELIGIBLE TO REENLIST IN THE SAME PERIOD, EXPRESSED AS A PERCENTAGE.

B/ "ADJUSTED REENLISTMENT RATE" - THE "UNADJUSTED" RATE ADJUSTED TO EXCLUDE THE EFFECTS OF (1) EARLY SEPARATIONS FOR IMMEDIATE REENLISTMENTS AND (2) OTHER EARLY DISCHARGES OF ELIGIBLES UNDER EARLY RELEASE PROGRAMS.

TABLE P309A

DEPARTMENT OF DEFENSE
ACTIVE DUTY MILITARY PERSONNEL STRENGTHS BY REGIONAL AREA AND BY COUNTRY
SEPTEMBER 30, 1984

REGIONAL AREA/COUNTRY	TOTAL	ARMY	NAVY	MARINE CORPS	AIR FORCE
U. S. TERRITORY AND SPECIAL LOCATIONS					
CONTINENTAL UNITED STATES (CONUS)	1,318,968	468,328	270,163	149,107	431,370
ALASKA	20,662	8,098	1,586	212	10,766
HAWAII	47,648	19,222	12,960	8,703	6,763
AMERICAN SAMOA	1	1	0	0	0
GUAM	9,175	37	4,715	377	4,046
JOHNSTON ATOLL	140	133	0	0	7
MIDWAY ISLANDS	12	0	12	0	0
PUERTO RICO	3,877	474	3,181	178	44
TRUST TERRITORY OF THE PACIFIC ISLANDS	1/	59	30	0	13
VIRGIN ISLANDS OF THE U.S.	12	10	1	0	1
WAKE ISLAND	6	0	0	0	6
TRANSIENTS	58,362	20,552	13,629	7,910	16,271
AFLOAT	168,462	0	168,462	0	0
TOTAL-U.S. TERR. AND SPECIAL LOCATIONS	1,627,427	516,914	474,739	166,487	469,287
FOREIGN COUNTRIES					
(1) WESTERN & SOUTHERN EUROPE					
AUSTRIA	26	4	0	20	2
BELGIUM*	2,484	1,354	121	30	979
CYPRUS	13	4	0	9	0
DENMARK*	58	8	18	10	22
FINLAND	18	4	2	10	2
FRANCE*	73	15	11	36	11
GERMANY (FED. REPUBLIC & WEST BERLIN)*	253,722	213,276	341	93	40,012
GIBRALTAR	3	0	3	0	0
GREECE*	3,711	523	470	13	2,705
GREENLAND*	329	0	0	0	329
ICELAND*	3,117	2	1,839	106	1,170
IRELAND	7	2	0	5	0
ITALY*	14,809	4,359	4,790	257	5,403
LUXEMBOURG*	10	3	0	7	0
NETHERLANDS*	2,823	835	15	10	1,963
NORWAY*	226	43	42	17	124
PORTUGAL*	1,705	64	396	10	1,235
SPAIN*	9,436	20	4,012	214	5,190
SWEDEN	15	1	2	7	5
SWITZERLAND	44	20	0	21	3

1/ Includes five civic action teams of approximately 13 persons each (1 in Palau and 4 in the Federated States of Micronesia).

TABLE P309A

DEPARTMENT OF DEFENSE
ACTIVE DUTY MILITARY PERSONNEL STRENGTHS BY REGIONAL AREA AND BY COUNTRY

REGIONAL AREA/COUNTRY	SEPTEMBER 30, 1984				
	TOTAL	ARMY	NAVY	MARINE CORPS	AIR FORCE
TURKEY*	5,449	1,278	101	18	4,052
UNITED KINGDOM*	28,823	213	2,291	348	25,971
AFLOAT	24,782	0	22,875	1,907	0
TOTAL-WESTERN & SOUTHERN EUROPE	351,683	222,028	37,329	3,148	89,178
[*EUROPEAN NATO]	(326,775)	(221,993)	(14,447)	(1,169)	(89,166)
[*EUROPEAN NATO PERMANENTLY ASSIGNED)	(323,103)	(218,190)	(14,396)	(1,169)	(89,348)
(2) EAST ASIA AND PACIFIC					
AUSTRALIA	746	9	434	10	293
BURMA	12	4	0	6	2
CHINA	23	5	3	12	3
HONG KONG	42	11	15	11	5
INDONESIA	47	11	14	11	11
JAPAN (INCLUDING OKINAWA)	45,761	2,646	7,504	20,643	14,968
MALAYSIA	26	14	2	8	2
NEW ZEALAND	68	4	48	5	11
PHILIPPINES	15,319	45	5,332	665	9,277
REPUBLIC OF KOREA	40,785	29,221	5,373	133	11,058
SINGAPORE	26	2	14	8	2
THAILAND	105	55	9	14	27
TONGA	1	1	0	0	0
AFLOAT	18,338	0	15,578	2,760	0
TOTAL-EAST ASIA & PACIFIC	121,299	32,028	29,326	24,286	35,659
(3) AFRICA, NEAR EAST AND SOUTH ASIA					
AFGHANISTAN	6	0	0	6	0
ALGERIA	8	2	0	6	0
BAHRAIN	98	4	93	0	1
BANGLADESH	9	3	0	6	0
BRITISH INDIAN OCEAN TERRITORY (INCLUDES DIEGO GARCIA)	1,253	0	1,239	0	14
CAMEROON	8	2	0	6	0
CHAD	11	3	0	8	0
CONGO	8	1	1	6	0
EGYPT	1,048	913	26	25	84
ETHIOPIA	7	0	0	7	0
GABON	6	0	0	6	0
GHANA	9	1	0	8	0
INDIA	32	5	3	19	5
ISRAEL	77	23	9	26	19

TABLE P309A

DEPARTMENT OF DEFENSE
ACTIVE DUTY MILITARY PERSONNEL STRENGTHS BY REGIONAL AREA AND BY COUNTRY

SEPTEMBER 30, 1984

REGIONAL AREA/COUNTRY	TOTAL	ARMY	NAVY	MARINE CORPS	AIR FORCE
IVORY COAST	10	3	0	7	0
JORDAN	29	16	0	8	5
KENYA	39	9	2	19	9
KUWAIT	28	17	2	8	1
LEBANON	25	10	0	15	0
LIBERIA	20	8	3	7	2
MADAGASCAR	7	0	2	5	0
MALAWI	2	2	0	0	0
MALI	6	0	0	6	0
MAURITIUS	6	0	0	6	0
MOROCCO	54	17	4	18	15
NEPAL	8	2	0	6	0
NIGER	6	0	0	6	0
NIGERIA	18	4	0	11	3
OMAN	19	2	1	10	6
PAKISTAN	34	7	2	18	7
ST. HELENA (INCLUDES ASCENSION ISLAND)	2	0	0	0	2
SAUDI ARABIA	537	249	63	20	205
SENEGAL	11	0	2	9	0
SEYCHELLES	4	0	0	0	4
SOMALIA	26	16	2	6	2
SOUTH AFRICA	20	2	2	12	4
SRI LANKA	9	0	3	6	0
SUDAN	25	8	0	8	9
SYRIA	9	2	0	7	0
TANZANIA, UNITED REPUBLIC OF	7	0	0	7	0
TUNISIA	31	19	2	7	3
UNITED ARAB EMIRATES	8	2	0	4	2
BURKINA FASO	6	0	0	6	0
YEMEN (SANAA)	17	7	0	6	4
ZAIRE	30	10	0	14	6
ZAMBIA	5	0	0	5	0
ZIMBABWE	6	2	0	4	0
AFLOAT	13,353	0	13,223	130	0
TOTAL-AFRICA, NEAR EAST & SOUTH ASIA	16,997	1,371	14,684	530	412
(4) WESTERN HEMISPHERE					
ANTIGUA	77	2	74	0	1
ARGENTINA	19	4	2	8	5
BAHAMAS, THE	45	1	21	7	16

TABLE P309A

DEPARTMENT OF DEFENSE
ACTIVE DUTY MILITARY PERSONNEL STRENGTHS BY REGIONAL AREA AND BY COUNTRY

SEPTEMBER 30, 1984

REGIONAL AREA/COUNTRY	TOTAL	ARMY	NAVY	MARINE CORPS	AIR FORCE
BARBADOS	12	4	1	7	0
BELIZE	3	3	0	0	0
BERMUDA	1,493	0	1,404	89	0
BOLIVIA	15	5	1	7	2
BRAZIL	48	12	7	22	7
CANADA	542	17	395	9	121
CHILE	19	3	1	13	2
COLOMBIA	33	12	2	13	6
COSTA RICA	14	5	0	9	0
CUBA (GUANTANAMO)	2,347	0	1,889	456	2
DOMINICAN REPUBLIC	18	5	3	8	2
ECUADOR	22	4	3	8	7
EL SALVADOR	51	25	0	23	3
GRENADA	165	159	0	6	0
GUATEMALA	18	6	0	11	1
GUYANA	7	1	0	6	0
HAITI	12	4	0	7	1
HONDURAS 2/	846	747	2	88	9
JAMAICA	14	1	3	10	0
MEXICO	32	11	3	12	6
NICARAGUA	10	2	0	7	1
PANAMA	9,354	6,620	391	156	2,187
PARAGUAY	12	3	1	7	1
PERU	26	5	7	8	6
ST. CHRISTOPHER-NEVIS-ANGUILLA	2	2	0	0	0
SURINAME	2	2	0	0	0
URUGUAY	12	2	1	7	2
VENEZUELA	37	5	6	8	18
AFL0AT	4,787	0	4,124	663	0
TOTAL-WESTERN HEMISPHERE	20,094	7,672	8,341	1,675	2,406
(5) ANTARCTICA	65	0	65	0	0
(6) EASTERN EUROPE					
BULGARIA	9	2	0	5	2
CZECHOSLOVAKIA	11	1	0	6	4
GERMAN DEMOCRATIC REPUBLIC	48	42	0	6	0
HUNGARY	13	4	0	8	1
POLAND	15	3	0	11	1
ROMANIA	14	3	0	10	1

2/ Number includes military personnel on IDY for planning and conduct of exercises.

TABLE P309A
 ACTIVE DUTY MILITARY PERSONNEL STRENGTHS BY REGIONAL AREA AND BY COUNTRY
 DEPARTMENT OF DEFENSE
 SEPTEMBER 30, 1984

REGIONAL AREA/COUNTRY	TOTAL	ARMY	NAVY	MARINE CORPS	AIR FORCE
UNION OF SOVIET SOCIALIST REPUBLICS	51	8	4	33	6
YUGOSLAVIA	18	4	1	9	4
TOTAL-EASTERN EUROPE	179	67	5	88	19
(7) UNDISTRIBUTED					
ASHORE	413	100	149	0	164
TOTAL-UNDISTRIBUTED	413	100	149	0	164
TOTAL FOREIGN COUNTRIES	510,730	263,266	89,899	29,727	127,838
ASHORE	449,470	263,266	34,099	24,267	127,838
AFLOAT	61,260	0	55,800	5,460	0
TOTAL WORLDWIDE	2,138,157	780,180	564,638	196,214	597,125
ASHORE	1,908,435	780,180	340,376	190,754	597,125
AFLOAT	229,722	0	224,262	5,460	0

NOTE. ASHORE INCLUDES TEMPORARILY SHORE-BASED.

G L O S S A R Y O F T E R M S

Active Duty: Full-time duty in the active service of a uniformed service, including duty on the active list, full-time training duty, annual training duty, and attendance while in the active service, at a school designated as a service school by law or by the Secretary concerned.

Armed Forces of the United States: Includes the Army, Navy, Air Force, Marine Corps, and Coast Guard, and all components thereof.

Career Regular: Individual serving on active duty in the regular component for a second or subsequent term of service or on an extended tour for which a reenlistment bonus was paid. An individual serving on an initial term of service in the regular component of a Service with at least 24 months of prior active duty with another Service will be considered a career regular.

Civil Functions: Functions primarily associated with the Civil Works program of the Army Corps of Engineers. This program encompasses planning, programming, designing, constructing, and operating Federal water resource projects for navigation, flood control, hydroelectric power, water supply, recreation, and related activities. Civil Functions also includes cemeterial workers (Army) and several conservation management employees (Air Force).

Continental United States: Unless otherwise qualified, means the 48 contiguous States and the District of Columbia.

Direct Hire Civilians: Employees hired directly by an agency of DoD. Includes foreign nationals hired by DoD to support DoD activities in their home countries.

Early Separations for Reenlistment: Separations prior to expiration of term of service for purpose of immediate reenlistment, as provided under service regulations.

Enlisted Member. A person enlisted, enrolled, or conscripted into the military service.

Enlistment. (1) A voluntary entrance into military service under enlisted status, as distinguished from induction through Selective Service.

(2) A period of time, contractual or prescribed by law, which enlisted members serve between enrollment and discharge.

First Term Regular: Individual serving on an initial term of service in the regular component of a Service, including those with prior active service in a nonregular component of the same Service (e.g., as a reservist or inductee). An individual serving on an initial term of service in the regular component of a Service who has less than 24 months of prior active duty with another Service will also be considered a first term regular.

Indirect Hire Civilians: Foreign nationals assigned to support U.S. forces through contracts or agreements with foreign governments (or agencies thereof). These personnel are employees of the foreign governments involved. All indirect hires support military functions.

Officer: A commissioned or warrant officer.

OTHER DEPARTMENT OF DEFENSE ORGANIZATIONS

- *Office of the Secretary of Defense (OSD)
- *Joint Chiefs of Staff (JCS)
Unified and Specified Commands
- *Inspector General of the Department of Defense

Department of Defense Agencies :

- *Defense Advanced Research Projects Agency (DARPA)
- Defense Audiovisual Agency (DAVA)
- Defense Communications Agency (DCA)
- Defense Contract Audit Agency (DCAA)
- Defense Intelligence Agency (DIA)
- Defense Investigative Service (DIS)
- *Defense Legal Services Agency (DLSA)
- Defense Logistics Agency (DLA)
- Defense Mapping Agency (DMA)
- Defense Nuclear Agency (DNA)
- *Defense Security Assistance Agency (DSAA)
- National Security Agency/Central Security Service (NSA/CSS)
- *Strategic Defense Initiative Organization

*Organizations serviced by OSD

Department of Defense Field Activities:

- *Armed Forces Information Service (AFIS)
- *Department of Defense Dependents Schools (DODDS)
- *Office of Civilian Health and Medical Program
Office (OCHAMPUS)
- *Office of Economic Adjustment (OEA)
- *Tri-Service Medical Information System Program
Office (TRIMIS)
- *Washington Headquarters Services (WHS)

*U.S. Court of Military Appeals

Uniformed Services University of the Health Sciences
(USUHS)

Reenlistment: Entry into active duty in the regular component of individuals with prior military service, either as regulars or as inductees of the same Service, either immediately or within 90 days after separation from a prior tour of active duty.

Reserve Components: The Army National Guard of the United States, Army Reserve, Naval Reserve, Marine Corps Reserve, Air National Guard of the United States, Air Force Reserve, and Coast Guard Reserve.

Separations, Eligible to Reenlist: Separations of individuals who, under current Service policies, are eligible (or available) for reenlistment in the regular components.

Service Academy Cadet or Midshipman: A person in training at one of the service academies to become a commissioned officer.

Warrant Officer: A person who holds a commission or warrant in a warrant officer grade.

*Organizations serviced by OSD.