

AD-A151 121

CIVILIAN MANPOWER STATISTICS, AUGUST, FY-80. (U)
WASHINGTON HEADQUARTERS SERVICE (DOD) DIR FOR INFO
OP & RPTS. AUG 80. DIOR/M04-80/11

1/1

UNCLASSIFIED

F/G 5/9

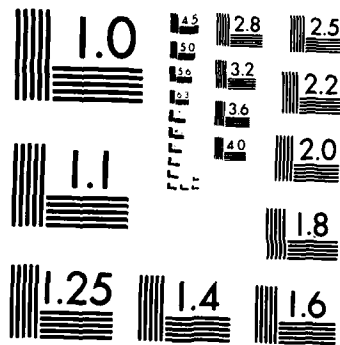
N/L

1 OF 1
ADA151 121

END
FILMED
11 04 85

1 OF 1

AD-A151 121



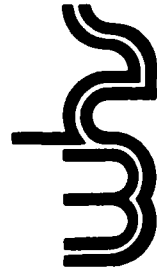
MICROCOPY RESOLUTION TEST CHART
NATIONAL BUREAU OF STANDARDS 1963-A

**THIS REPORT IS UNCLASSIFIED AND
ITS DISTRIBUTION IS UNLIMITED**

DEPARTMENT OF DEFENSE CIVILIAN MANPOWER STATISTICS



AS OF AUGUST 31, 1980



WASHINGTON HEADQUARTERS SERVICES
Directorate for Information Operations and Reports

FOREWARD

CIVILIAN EMPLOYMENT STATISTICS (CES) is a monthly publication prepared by the Washington Headquarters Services, Directorate for Information Operations and Reports (WHS/DIOR) of the Office of the Secretary of Defense.

CES presents audited statistical data pertaining to civilian personnel of the Department of Defense. This publication is produced from the same computerized data base maintained and utilized by WHS/DIOR for the submission of the Monthly Report of Federal Civilian Employment (SF 113-A) to the Office of Personnel Management.

Requests for additional copies and changes in distribution and addresses should be addressed to the Director, Washington Headquarters Services, Room 3E243, The Pentagon, Washington, DC 20301.

TABLE OF CONTENTS

<u>Number</u>	<u>Title</u>
Table P12.2	Department of Defense Civilian and Military Personnel, OSD-JCS and Other Defense Activities
Table P30.10	Department of Defense Direct Hire Civilian Employment
Table P30.11	Department of Defense Summary of Civilian Employment
Table P31.0	Department of Defense Civilian Personnel by Category
Table P32.0	Department of Defense Civilian Personnel by Location
Table P32.6	Department of Defense Indirect Hire Personnel by Country
Table P33.1	Department of Defense Monthly Accessions and Separations of Direct Hire Civilian Employees
Table P33.2	Department of Defense Monthly Separations of DoD Direct Hire Civilian Employees by Cause

TABLE P12.2

DEPARTMENT OF DEFENSE
CIVILIAN AND MILITARY PERSONNEL
OSD-JCS AND OTHER DEFENSE ACTIVITIES

August 31, 1980

COMPONENT	TOTAL	CIVILIAN	TOTAL	MILITARY	
				OFFICER	ENLISTED
TOTALS	82,566	75,610	6,956	4,118	2,838
OSD & RELATED ACTIVITIES*	4,145	2,437	1,708	1,178	530
DEFENSE AUDIT SERVICE	373	373	-	-	-
DEFENSE COMMUNICATIONS AGENCY	3,016	1,600	1,416	452	964
DEFENSE CONTRACT AUDIT AGENCY	3,492	3,492	-	-	-
DEFENSE INTELLIGENCE AGENCY	4,255	2,533	1,722	1,102	620
DEFENSE INVESTIGATIVE SERVICE	1,707	1,526	181	91	90
DEFENSE LOGISTICS AGENCY	47,238	46,285	953	791	162
DEFENSE MAPPING AGENCY	8,589	8,157	432	179	253
DEFENSE NUCLEAR AGENCY	1,081	606	475	284	191
DEPARTMENT OF DEFENSE DEPENDENTS SCHOOLS	8,091	8,091	-	-	-
UNIFORMED SERVICES UNIVERSITY OF HEALTH SCIENCES	564	495	69	41	28
DEFENSE AUDIO-VISUAL AGENCY	15	15	-	-	-

* INCLUDES OSD-JCS, AFIS, CHAMPUS, DARPA, DSAA, TRIMIS, USCMA, AND WHS.

DEPARTMENT OF DEFENSE
WASHINGTON HEADQUARTERS SERVICES
DIRECTORATE FOR INFORMATION
OPERATIONS AND REPORTS
October 6, 1980

TABLE P30.10

DEPARTMENT OF DEFENSE
DIRECT HIRE CIVILIAN EMPLOYMENT A/

COMPONENT	FULL-TIME IN PERMANENT POSITIONS					TOTAL EMPLOYMENT	
	JUL 31, 80	AUG 31, 80	SEP 30, 80 B/	JUL 31, 80	AUG 31, 80	SEP 30, 80 B/	
MILITARY FUNCTIONS:							
ARMY	284,272	282,487	292,921	319,330	311,781	306,807	
NAVY	291,537	288,909	290,340	310,594	306,825	296,840	
AIR FORCE	220,440	218,341	223,910	235,554	229,306	228,910	
OSD & RELATED ACTIVITIES*	2,129	2,200	2,408	2,445	2,399	2,569	
DEFENSE AUDIT SERVICE	363	363	393	365	365	393	
DEFENSE COMMUNICATIONS AGENCY	1,541	1,511	1,589	1,604	1,555	1,612	
DEFENSE CONTRACT AUDIT AGENCY	3,431	3,400	3,559	3,472	3,437	3,568	
DEFENSE INTELLIGENCE AGENCY	2,518	2,510	2,559	2,510	2,532	2,564	
DEFENSE INVESTIGATIVE SERVICE	1,533	1,507	1,540	1,535	1,510	1,540	
DEFENSE LOGISTICS AGENCY	44,757	44,465	45,920	45,632	45,235	46,493	
DEFENSE MAPPING AGENCY	7,908	7,874	7,997	8,115	8,042	8,037	
DEFENSE NUCLEAR AGENCY	592	583	630	608	596	630	
DEPARTMENT OF DEFENSE DEPENDENTS SCHOOLS	1,068	6,638	9,022	1,571	8,090	9,802	
UNIFORM SERVICES UNIVERSITY OF THE HEALTH SCIENCES	424	436	542	520	493	585	
DEFENSE AUDIOVISUAL AGENCY	15	15	N/A	15	15	N/A	
TOTAL, MILITARY FUNCTIONS	862,588	861,239	883,830	933,903	922,181	910,350	
CIVIL FUNCTIONS	27,968	27,846	N/A	35,591	35,016	N/A	
TOTAL POD	890,556	889,085		969,494	957,197		

A/ TOP CEILING EMPLOYMENT. EXCLUDES USA AND YOUTH PROGRAMS.

B/ PRESIDENT'S FY80 BUDGET PLAN.

* INCLUDES OSD-JCS, AFIS, CHAMPUS, DARPA, DEAM, TRIMIS, USOMA AND JHS.

DEPARTMENT OF DEFENSE
WASHINGTON HEADQUARTERS SERVICES
DIRECTORATE FOR INFORMATION
OPERATIONS AND REPORTS
October 15, 1980

TABLE P30.11

DEPARTMENT OF DEFENSE
SUMMARY OF CIVILIAN EMPLOYMENT

DEPARTMENT AND FUNCTION	30 SEP 77	30 SEP 78	30 SEP 79	30 JUN 80	31 JUL 80	31 AUG 80
DIRECT HIRE A/						
TOTAL DEPARTMENT OF DEFENSE	972,407	969,293	949,106	969,212	969,494	957,197
MILITARY FUNCTIONS	939,021	935,703	915,764	934,091	933,903	922,181
CIVIL FUNCTIONS	33,386	33,590	33,342	35,121	35,591	35,016
TOTAL ARMY	348,418	349,664	342,811	355,342	354,917	346,794
MILITARY FUNCTIONS	315,037	316,078	309,475	320,225	319,330	311,781
CIVIL FUNCTIONS	33,381	33,586	33,336	35,117	35,587	35,013
TOTAL NAVY	306,668	306,420	299,449	310,260	310,594	306,825
TOTAL AIR FORCE	240,824	237,028	231,844	235,174	235,558	229,309
MILITARY FUNCTIONS	240,819	237,024	231,838	235,170	235,554	229,306
CIVIL FUNCTIONS	5	4	6	4	4	3
TOTAL OTHER DEFENSE ACTIVITIES	76,497	76,181	75,002	68,436	68,425	74,269
INDIRECT HIRE \$						
TOTAL DEPARTMENT OF DEFENSE	83,395	81,048	75,317	74,159	73,938	74,275
ARMY	56,528	55,291	49,646	48,433	48,416	48,576
NAVY	10,944	10,376	10,727	10,795	10,667	10,694
AIR FORCE	14,502	14,067	13,244	13,146	13,134	13,278
OTHER DEFENSE ACTIVITIES	1,421	1,314	1,700	1,780	1,721	1,727

A/ "TOTAL OMB CEILING EMPLOYEES" AS REPORTED OFFICIALLY TO THE OFFICE OF PERSONNEL MANAGEMENT ON SF 113-A. EXCLUDES YOUTH PROGRAMS.

B/ FOREIGN NATIONALS SUPPORTING U.S. MILITARY FORCES OVERSEAS UNDER AGREEMENTS WITH FOREIGN GOVERNMENTS.

DEPARTMENT OF DEFENSE
WASHINGTON HEADQUARTERS SERVICES
DIRECTORATE FOR INFORMATION
OPERATIONS AND REPORTS
October 15, 1980

TABLE P31.0
 DEPARTMENT OF DEFENSE
 CIVILIAN PERSONNEL BY CATEGORY
 SEPTEMBER 1980

	ARMY	NAVY	AIR FORCE	OTHER DEFENSE ACT'VITIES	TOTAL DEPT OF DEFENSE
WORLDWIDE TOTAL	401227	323161	245390	77337	1047115
DIRECT HIRE (†)	352651	312467	232112	75610	972840
BY FULL-TIME & PART-TIME					
FULL-TIME	344473	307521	228455	74398	954847
PART-TIME & INTERMITTENT	8178	4946	3657	1212	17993
BY CITIZENSHIP:					
U.S. CITIZENS (††)	336404	297921	225373	74982	934680
FOREIGN NATIONALS	16247	14546	6739	628	38160
BY SALARIED & WAGE BOARD					
SALARIED	235143	174043	144091	64435	617712
WAGE BOARD	117508	138424	88021	11175	355128
INDIRECT HIRE (†††)	48576	10694	13278	1727	74275
TOTAL U.S. CITIZENS	336404	297921	225373	74982	934680
TOTAL FOREIGN NATIONALS	64823	25240	20017	2355	112435

(†) TOTAL PAID EMPLOYEES AS REPORTED TO THE OFFICE OF PERSONNEL MANAGEMENT ON STANDARD FORM 113A.
 (††) INCLUDES CITIZENS OF U.S. TERRITORIES.
 (†††) FOREIGN NATIONALS SUPPORTING U.S. MILITARY IN OVERSEAS AREAS UNDER CONTRACT/AGREEMENT WITH FOREIGN GOVERNMENTS.

TABLE P32.0

DEPARTMENT OF DEFENSE
CIVILIAN PERSONNEL BY LOCATION
SEPTEMBER 1980

	ARMY	NAVY	AIR FORCE	OTHER DEFENSE ACTIVITIES	TOTAL DEPT OF DEFENSE
WORLDWIDE TOTAL	401227	323161	245390	77337	1047115
UNITED STATES (DIRECT HIRE)	317319	290972	219852	66615	894758
BY LOCATION					
WASHINGTON, D.C.	25470	34339	6058	13005	78872
REMAINDER OF U.S. (†)	291849	256633	213794	53610	815886
BY SALARIED & WAGE BOARD					
SALARIED	220673	165173	133347	55603	574796
WAGE BOARD	96646	125799	86505	11012	319962
U.S. TERRITORIES (DIRECT HIRE)	1066	4388	879	78	6411
BY CITIZENSHIP:					
U.S. CITIZENS (††)	1065	4348	878	50	6341
FOREIGN NATIONALS	1	40	1	28	70
BY SALARIED & WAGE BOARD					
SALARIED	711	1819	372	66	2968
WAGE BOARD	355	2569	507	12	3443
FOREIGN COUNTRIES	82842	27801	24659	10644	145946
DIRECT HIRE	34266	17107	11381	8917	71671
BY CITIZENSHIP:					
U.S. CITIZENS (††)	18357	2601	4686	8339	33983
FOREIGN NATIONALS	15909	14506	6695	578	37688
BY SALARIED & WAGE BOARD					
SALARIED	13759	7051	10372	8766	39948
WAGE BOARD	20507	10056	1009	151	31723
INDIRECT HIRE (FOREIGN NATIONALS)	48576	10694	13278	1727	74275

(†) INCLUDES ALASKA AND HAWAII
 (††) INCLUDES EMPLOYEES WHO ARE U.S. CITIZENS BY
 VIRTUE OF CITIZENSHIP IN A U.S. TERRITORY

DEPARTMENT OF DEFENSE
 WASHINGTON HEADQUARTERS SERVICES
 DIRECTORATE FOR INFORMATION
 OPERATIONS AND REPORTS
 October 6, 1980

TABLE P32.6

DEPARTMENT OF DEFENSE
INDIRECT HIRE PERSONNEL BY COUNTRY

AUGUST 31, 1980

COUNTRY	TOTAL	ARMY	NAVY	AIR FORCE	OTHER DEFENSE ACTIVITIES
TOTAL	74,275	48,576	10,694	13,278	1,727
BELGIUM	465	450	-	-	15
GERMANY	48,513	41,229	26	6,005	1,253
GREECE (INCLUDES CRETE)	567	14	117	420	16
JAPAN (INCLUDES OKINAWA)	17,930	3,528	9,356	4,790	256
KOREA	3,104	3,104	-	-	-
NETHERLANDS	331	250	-	67	14
PHILIPPINES	1	-	-	-	1
PORTUGAL	1	1	-	-	-
SPAIN	2,103	-	1,130	891	82
UNITED KINGDOM	1,260	-	65	1,105	90

INDIRECT HIRE PERSONNEL ARE FOREIGN NATIONALS SUPPORTING U.S. MILITARY FORCES UNDER CONTRACT OR AGREEMENTS WITH FOREIGN GOVERNMENTS.

DEPARTMENT OF DEFENSE
WASHINGTON HEADQUARTERS SERVICES
DIRECTORATE FOR INFORMATION
OPERATIONS AND REPORTS
October 6, 1980

TABLE P33.1

DEPARTMENT OF DEFENSE
MONTHLY ACCESSIONS AND SEPARATIONS OF DIRECT HIRE CIVILIAN EMPLOYEES

DATE	ACCESSIONS		SEPARATIONS	
	NUMBER	RATE	NUMBER	RATE
1979				
JANUARY	10,003	1.03	15,445	1.59
FEBRUARY	8,939	.92	10,974	1.13
MARCH	11,823	1.22	13,939	1.44
APRIL	13,010	1.34	12,452	1.28
MAY	16,576	1.70	12,642	1.29
JUNE	28,683	2.93	23,850	2.43
JULY	20,316	2.07	16,911	1.72
AUGUST	21,266	2.18	27,230	2.80
SEPTEMBER	20,269	2.11	34,269	3.57
OCTOBER	20,814	2.16	16,892	1.75
NOVEMBER	14,823	1.53	11,367	1.18
DECEMBER	11,587	1.20	12,000	1.24
1980				
JANUARY	15,754	1.63	19,744	2.05
FEBRUARY	12,841	1.33	12,958	1.34
MARCH	17,794	1.84	15,575	1.61
APRIL	15,226	1.57	12,488	1.29
MAY	18,584	1.91	13,311	1.37
JUNE	35,078	3.55	22,012	2.23
JULY	16,997	1.72	15,140	1.53
AUGUST	19,622	2.07	34,671	3.56

DEPARTMENT OF DEFENSE
WASHINGTON HEADQUARTERS SERVICES
DIRECTORATE FOR INFORMATION
OPERATIONS AND REPORTS
October 15, 1980

TABLE P-33.2

REPORTING OF DEFENSE
MONTHLY SEPARATIONS OF NON-DIRECT HIRE CIVILIAN EMPLOYEES BY CAUSE

CALENDAR YEAR	TOTAL	QUIT	RIF	TERMINATION A/	OTHER B/
1979					
JANUARY	15,445	4,118	131	2,411	8,785
FEBRUARY	10,973	4,056	67	1,740	5,110
MARCH	13,933	5,014	202	2,291	6,432
APRIL	12,452	4,340	455	1,815	5,842
MAY	12,642	5,015	401	1,744	5,582
JUNE	23,850	6,635	295	3,444	13,426
JULY	16,911	6,727	224	2,256	7,704
AUGUST	27,239	14,170	253	4,957	7,850
SEPTEMBER	34,260	13,620	361	11,444	8,844
OCTOBER	16,892	5,915	248	4,847	5,882
NOVEMBER	11,367	4,198	120	1,788	5,271
DECEMBER	12,000	3,945	82	1,849	6,124
1980					
JANUARY	19,744	5,239	152	2,134	12,219
FEBRUARY	12,958	4,247	82	1,441	7,188
MARCH	15,575	4,642	101	1,862	8,970
APRIL	12,488	4,597	87	2,032	5,772
MAY	13,311	5,087	73	2,537	5,614
JUNE	22,012	5,864	121	2,739	13,288
JULY	15,140	6,165	151	2,707	6,117
AUGUST	34,571	15,079	144	7,226	12,231

A/ TERMINATIONS OF TEMPORARY OR EXCEPTED APPOINTMENTS OR OF PER-CORAL

SERVICE CONTRACTS.

B/ INCLUDES TRANSFERS, DISCHARGE S, DISPLACEMENT, EXTENDED LWOP AND

RESIGNATION, DEATH, DISABILITY AND RETIREMENTS.

DEPARTMENT OF DEFENSE
WASHINGTON HEADQUARTERS SERVICES
DIRECTORATE FOR INFORMATION
OPERATIONS AND REPORTS
October 15, 1980