

AD-A151 124

CIVILIAN MANPOWER STATISTICS, NOVEMBER, FY-81. (U)
WASHINGTON HEADQUARTERS SERVICE (DOD) DIR FOR INFO
OP & RPTS. NOV 80. DIOR/MO4-81/02

11

UNCLASSIFIED

F/G 5/9

N/L

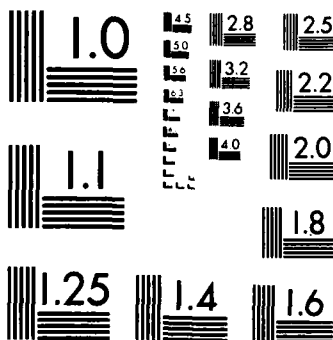
1 OF 1
AD A151 124



END
FILMED
11 04 85

1 OF 1

AD-A151 124



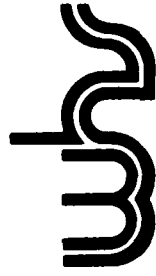
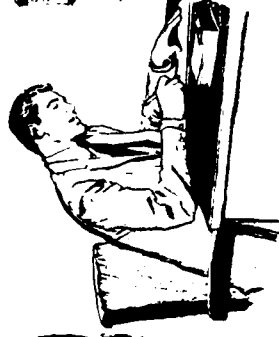
MICROCOPY RESOLUTION TEST CHART
NATIONAL BUREAU OF STANDARDS-1963-A

**THIS REPORT IS UNCLASSIFIED AND
ITS DISTRIBUTION IS UNLIMITED**

DEPARTMENT OF DEFENSE CIVILIAN MANPOWER STATISTICS



NOVEMBER 30, 1980



WASHINGTON HEADQUARTERS SERVICES
Directorate for Information Operations and Reports

FOREWORD

CIVILIAN MANPOWER STATISTICS (CMS) is a monthly publication prepared by the Washington Headquarters Services, Directorate for Information Operations and Reports (WHS/DIOR) of the Office of the Secretary of Defense.

CMS presents audited statistical data pertaining to civilian personnel of the Department of Defense. This publication is produced from the same computerized data base maintained and utilized by WHS/DIOR for the submission of the Monthly Report of Federal Civilian Employment (SF 113-A) to the Office of Personnel Management.

In the past, the tables in this report had been assigned so-called "p" numbers. Beginning with the September 30, 1980 publication of CMS, the tables have been renumbered consecutively. For purposes of clarification, the former "p" number has been placed parenthetically in the title line of each table.

Requests for additional copies and changes in distribution and addresses should be addressed to the Director, Washington Headquarters Services, Room 3E843, The Pentagon, Washington, DC 20301.

TABLE OF CONTENTS

<u>Number</u>	<u>Title</u>
Table 1	Department of Defense Civilian and Military Personnel, OSD-JCS and Other Defense Activities (P12.2)
Table 2	Department of Defense Direct Hire Civilian Employment (P30.10)
Table 3	Department of Defense Summary of Civilian Employment (P30.11)
Table 4	Department of Defense Civilian Personnel by Category (P31.0)
Table 5	Department of Defense Civilian Personnel by Location (P32.0)
Table 6	Department of Defense Indirect Hire Personnel by Country (P32.6)
Table 7	Department of Defense Monthly Accessions and Separations of Direct Hire Civilian Employees (P33.1)
Table 8	Department of Defense Monthly Separations of Department of Defense Direct Hire Civilian Employees by Cause (P33.2)

TABLE 1

DEPARTMENT OF DEFENSE
CIVILIAN AND MILITARY PERSONNEL
OSD-JCS AND OTHER DEFENSE ACTIVITIES (P12.2)

NOVEMBER 30, 1980

COMPONENT	TOTAL	CIVILIAN	TOTAL	MILITARY	
				OFFICER	ENLISTED
TOTALS	84,618	77,599	7,019	4,161	2,858
OSD & RELATED ACTIVITIES*	4,156	2,436	1,720	1,189	531
DEFENSE AUDIT SERVICE	382	382	-	-	-
DEFENSE COMMUNICATIONS AGENCY	3,062	1,602	1,460	468	992
DEFENSE CONTRACT AUDIT AGENCY	3,426	3,426	-	-	-
DEFENSE INTELLIGENCE AGENCY	4,313	2,574	1,739	1,117	622
DEFENSE INVESTIGATIVE SERVICE	2,316	2,134	182	97	85
DEFENSE LOGISTICS AGENCY	46,478	45,533	945	786	159
DEFENSE MAPPING AGENCY	8,749	8,328	421	170	251
DEFENSE NUCLEAR AGENCY	1,081	602	479	290	189
DEPARTMENT OF DEFENSE DEPENDENTS SCHOOLS	9,638	9,638	-	-	-
UNIFORMED SERVICES UNIVERSITY OF HEALTH SCIENCES	588	515	73	44	29
DEFENSE AUDIO-VISUAL AGENCY	429	429	-	-	-

* INCLUDES OSD-JCS, AFIS, CHAMPUS, DARPA, DSAA, TRIMIS, USCMA, AND WHS.

DEPARTMENT OF DEFENSE
WASHINGTON HEADQUARTERS SERVICES
DIRECTORATE FOR INFORMATION
OPERATIONS AND REPORTS

TABLE 2

DEPARTMENT OF DEFENSE
DIRECT HIRE CIVILIAN EMPLOYMENT (P30.10)A/

COMPONENT	FULL-TIME IN PERMANENT POSITIONS					TOTAL EMPLOYMENT		
	OCT 31, 80	NOV 30, 80	SEP 30, 80 B/	OCT 31, 80	NOV 30, 80	SEP 30, 80 B/		
MILITARY FUNCTIONS:								
ARMY	285,783	285,703	292,921	310,584	309,863	306,807		
NAVY	291,483	292,063	290,840	307,215	308,705	296,840		
AIR FORCE	221,051	221,315	223,910	231,012	230,920	228,910		
OSD & RELATED ACTIVITIES*	2,178	2,182	2,408	2,404	2,420	2,569		
DEFENSE AUDIT SERVICE	375	377	393	377	379	393		
DEFENSE COMMUNICATIONS AGENCY	1,514	1,528	1,589	1,550	1,561	1,612		
DEFENSE CONTRACT AUDIT AGENCY	3,364	3,362	3,559	3,406	3,406	3,568		
DEFENSE INTELLIGENCE AGENCY	2,551	2,549	2,559	2,575	2,573	2,564		
DEFENSE INVESTIGATIVE SERVICE	2,081	2,107	1,540	2,084	2,109	1,540		
DEFENSE LOGISTICS AGENCY	44,066	43,812	45,920	44,932	44,754	46,493		
DEFENSE MAPPING AGENCY	8,027	8,061	7,997	8,227	8,227	8,037		
DEFENSE NUCLEAR AGENCY	571	577	630	580	585	630		
DEPARTMENT OF DEFENSE DEPENDENTS SCHOOLS	7,072	6,935	9,022	9,472	9,465	9,802		
UNIFORM SERVICES UNIVERSITY OF THE HEALTH SCIENCES	450	463	542	510	515	585		
DEFENSE AUDIOVISUAL AGENCY	383	387	N/A	418	427	N/A		
TOTAL, MILITARY FUNCTIONS	870,949	871,421	883,830	925,346	925,909	910,350		
CIVIL FUNCTIONS	27,718	27,692	N/A	33,345	33,455	N/A		
TOTAL DOD	898,667	899,113		958,691	959,364			

A/ OMB CEILING EMPLOYMENT. EXCLUDES NSA AND YOUTH PROGRAMS.

B/ PRESIDENT'S FY80 BUDGET PLAN.

* INCLUDES OSD-JCS, AFIS, CHAMPUS, DARPA, DSAA, TRIMIS, USCMA AND WHS.

DEPARTMENT OF DEFENSE
WASHINGTON HEADQUARTERS SERVICES
DIRECTORATE FOR INFORMATION
OPERATIONS AND REPORTS

TABLE 3
DEPARTMENT OF DEFENSE
SUMMARY OF CIVILIAN EMPLOYMENT (P30.11)

DEPARTMENT AND FUNCTION	30 SEP 77	30 SEP 78	30 SEP 79	30 SEP 80	31 OCT 80	30 NOV 80
DIRECT HIRE A/						
TOTAL DEPARTMENT OF DEFENSE	972,407	969,293	949,106	948,397	958,691	959,364
MILITARY FUNCTIONS	939,021	935,703	915,764	915,786	925,346	925,909
CIVIL FUNCTIONS	33,386	33,590	33,342	32,611	33,345	33,455
TOTAL ARMY	348,418	349,664	342,811	344,403	343,926	343,315
MILITARY FUNCTIONS	315,037	316,078	309,475	311,795	310,584	309,863
CIVIL FUNCTIONS	33,381	33,586	33,336	32,608	33,342	33,452
TOTAL NAVY	306,668	306,420	299,449	297,984	307,215	308,705
TOTAL AIR FORCE	240,824	237,028	231,844	230,941	231,015	230,923
MILITARY FUNCTIONS	240,819	237,024	231,838	230,938	231,012	230,920
CIVIL FUNCTIONS	5	4	6	3	3	3
TOTAL OTHER DEFENSE ACTIVITIES	76,497	76,181	75,002	75,069	76,535	76,421
INDIRECT HIRE B/						
TOTAL DEPARTMENT OF DEFENSE	83,395	81,048	75,317	74,570	74,174	74,710
ARMY	56,528	55,291	49,646	48,713	48,751	49,075
NAVY	10,944	10,376	10,727	10,731	10,461	10,653
AIR FORCE	14,502	14,067	13,244	13,404	13,232	13,244
OTHER DEFENSE ACTIVITIES	1,421	1,314	1,700	1,722	1,730	1,738

A/ "TOTAL OMB CEILING EMPLOYEES" AS REPORTED OFFICIALLY TO THE OFFICE OF PERSONNEL MANAGEMENT ON SF 113-A. EXCLUDES YOUTH PROGRAMS.

B/ FOREIGN NATIONALS SUPPORTING U.S. MILITARY FORCES OVERSEAS UNDER AGREEMENTS WITH FOREIGN GOVERNMENTS.

DEPARTMENT OF DEFENSE
WASHINGTON HEADQUARTERS SERVICES
DIRECTORATE FOR INFORMATION
OPERATIONS AND REPORTS

TABLE 4

DEPARTMENT OF DEFENSE
 CIVILIAN PERSONNEL BY CATEGORY (P31.0)
 NOVEMBER 1980

	ARMY	NAVY	AIR FORCE	OTHER DEFENSE ACTIVITIES	TOTAL DEPT OF DEFENSE
WORLDWIDE TOTAL	396579	323826	246669	79337	1046411
DIRECT HIRE (+)	347504	313173	233425	77599	971701
BY FULL-TIME & PART-TIME					
FULL-TIME	337393	306955	228377	74907	947632
PART-TIME & INTERMITTENT	8113	5776	2944	1908	18741
BY CITIZENSHIP:					
U.S. CITIZENS (++)	331383	298668	226723	76978	933752
FOREIGN NATIONALS	16121	14505	6702	621	37949
BY SALARIED & WAGE BOARD					
SALARIED	233671	172553	145534	66289	618047
WAGE BOARD	113833	140620	87891	11310	353654
INDIRECT HIRE (+++)	49075	10653	13244	1738	74710
TOTAL U.S. CITIZENS	331383	298668	226723	76978	933752
TOTAL FOREIGN NATIONALS	65196	25158	19946	2359	112659

(+) TOTAL PAID EMPLOYEES AS REPORTED TO THE OFFICE OF PERSONNEL MANAGEMENT ON STANDARD FORM 113A.

(++) INCLUDES CITIZENS OF U.S. TERRITORIES.

(+++) FOREIGN NATIONALS SUPPORTING U.S. MILITARY IN OVER-SEAS AREAS UNDER CONTRACT/AGREEMENT WITH FOREIGN GOVERNMENTS.

DEPARTMENT OF DEFENSE
 WASHINGTON HEADQUARTERS SERVICES
 DIRECTORATE FOR INFORMATION
 OPERATIONS AND REPORTS

TABLE 5

DEPARTMENT OF DEFENSE
CIVILIAN PERSONNEL BY LOCATION (P32.0)
NOVEMBER 1980

	ARMY	NAVY	AIR FORCE	OTHER DEFENSE ACTIVITIES	TOTAL DEPT OF DEFENSE
WORLDWIDE TOTAL	396579	323826	246669	79337	1046411
UNITED STATES (DIRECT HIRE)	312259	291744	220987	67050	892040
BY LOCATION					
WASHINGTON, D.C.	25275	34199	6057	13174	78705
REMAINDER OF U.S. (†)	286984	257545	214930	53876	813335
BY SALARIED & WAGE BOARD					
SALARIED	217419	163679	134608	55899	571605
WAGE BOARD	94840	128065	86379	11151	320435
U.S. TERRITORIES (DIRECT HIRE)	1092	4338	871	77	6378
BY CITIZENSHIP:					
U.S. CITIZENS (††)	1091	4292	871	46	6300
FOREIGN NATIONALS	1	46	0	31	78
BY SALARIED & WAGE BOARD					
SALARIED	729	1736	370	66	2901
WAGE BOARD	363	2602	501	11	3477
FOREIGN COUNTRIES	83228	27744	24811	12210	147993
DIRECT HIRE	34153	17091	11567	10472	73283
BY CITIZENSHIP:					
U.S. CITIZENS (††)	18328	2632	4902	9903	35765
FOREIGN NATIONALS	15825	14459	6665	569	37518
BY SALARIED & WAGE BOARD					
SALARIED	15523	7138	10556	10324	43541
WAGE BOARD	18630	9953	1011	148	29742
INDIRECT HIRE (FOREIGN NATIONALS)	49075	10653	13244	1738	74710

(†) INCLUDES ALASKA AND HAWAII
(††) INCLUDES EMPLOYEES WHO ARE U.S. CITIZENS BY VIRTUE OF CITIZENSHIP IN A U.S. TERRITORY

DEPARTMENT OF DEFENSE
WASHINGTON HEADQUARTERS SERVICES
DIRECTORATE FOR INFORMATION
OPERATIONS AND REPORTS

TABLE 6

DEPARTMENT OF DEFENSE
INDIRECT HIRE PERSONNEL BY COUNTRY (P32.6)

NOVEMBER 30, 1980

COUNTRY	TOTAL	ARMY	NAVY	AIR FORCE	OTHER DEFENSE ACTIVITIES
TOTAL	74,710	49,075	10,653	13,244	1,738
BELGIUM	454	437	-	-	17
GERMANY	49,043	41,748	26	6,016	1,253
GREECE (INCLUDES CRETE)	576	15	117	428	16
JAPAN (INCLUDES OKINAWA)	17,872	3,505	9,344	4,768	255
KOREA	3,117	3,117	-	-	-
NETHERLANDS	333	252	-	70	11
PHILIPPINES	7	-	6	-	1
PORTUGAL	1	1	-	-	-
SPAIN	2,007	-	1,092	825	90
UNITED KINGDOM	1,296	-	64	1,137	95
GUAM	4	-	4	-	-

INDIRECT HIRE PERSONNEL ARE FOREIGN NATIONALS SUPPORTING U.S. MILITARY FORCES UNDER CONTRACT OR AGREEMENTS WITH FOREIGN GOVERNMENTS.

DEPARTMENT OF DEFENSE
WASHINGTON HEADQUARTERS SERVICES
DIRECTORATE FOR INFORMATION
OPERATIONS AND REPORTS

TABLE 7

DEPARTMENT OF DEFENSE
MONTHLY ACCESSIONS AND SEPARATIONS OF DIRECT HIRE CIVILIAN EMPLOYEES (P33.1)

DATE	ACCESSIONS		SEPARATIONS	
	NUMBER	RATE	NUMBER	RATE
1979				
JANUARY	10,003	1.03	15,445	1.59
FEBRUARY	8,939	.92	10,974	1.13
MARCH	11,823	1.22	13,939	1.44
APRIL	13,010	1.34	12,452	1.28
MAY	16,576	1.70	12,642	1.29
JUNE	28,683	2.93	23,850	2.43
JULY	20,316	2.07	16,911	1.72
AUGUST	21,266	2.18	27,230	2.80
SEPTEMBER	20,269	2.11	34,269	3.57
OCTOBER	20,814	2.16	16,892	1.75
NOVEMBER	14,823	1.53	11,367	1.18
DECEMBER	11,587	1.20	12,000	1.24
1980				
JANUARY	15,754	1.63	19,744	2.05
FEBRUARY	12,841	1.33	12,958	1.34
MARCH	17,794	1.84	15,575	1.61
APRIL	15,226	1.57	12,488	1.29
MAY	18,584	1.91	13,311	1.37
JUNE	35,078	3.5	22,012	2.23
JULY	16,997	1.72	15,140	1.53
AUGUST	19,622	2.02	34,671	3.56
SEPTEMBER	25,301	.64	38,376	4.00
OCTOBER	23,733	2.45	13,652	1.41
NOVEMBER	12,973	1.34	11,312	1.16

DEPARTMENT OF DEFENSE
WASHINGTON HEADQUARTERS SERVICES
DIRECTORATE FOR INFORMATION
OPERATIONS AND REPORTS

TABLE 8

DEPARTMENT OF DEFENSE
MONTHLY SEPARATIONS OF DOD DIRECT HIRE CIVILIAN EMPLOYEES BY CAUSE (P33.2)
WORLDWIDE

CALENDAR YEAR	TOTAL	QUIT	RIF	TERMINATION A/	OTHER B/
1979					
JANUARY	15,445	4,118	131	2,411	8,785
FEBRUARY	10,973	4,056	67	1,740	5,110
MARCH	13,939	5,014	202	2,291	6,432
APRIL	12,452	4,340	455	1,815	5,842
MAY	12,642	4,915	401	1,744	5,582
JUNE	23,850	6,685	295	3,444	13,426
JULY	16,911	6,727	224	2,256	7,704
AUGUST	27,230	14,170	253	4,957	7,850
SEPTEMBER	34,269	13,620	361	11,444	8,844
OCTOBER	16,892	5,915	248	4,847	5,882
NOVEMBER	11,367	4,188	120	1,788	5,271
DECEMBER	12,000	3,945	82	1,849	6,124
1980					
JANUARY	19,744	5,239	152	2,134	12,219
FEBRUARY	12,958	4,247	82	1,441	7,188
MARCH	15,575	4,642	101	1,862	8,970
APRIL	12,488	4,597	27	2,032	5,772
MAY	13,311	5,087	73	2,537	5,614
JUNE	22,012	5,864	121	2,739	13,288
JULY	15,140	6,165	151	2,707	6,117
AUGUST	34,671	15,070	144	7,226	12,231
SEPTEMBER	38,376	13,502	243	14,302	10,329
OCTOBER	13,652	4,812	117	3,967	4,756
NOVEMBER	11,312	3,952	65	2,470	4,825

A/ TERMINATIONS OF TEMPORARY OR EXCEPTED APPOINTMENTS OR OF PERSONAL SERVICE CONTRACTS.

B/ INCLUDES TRANSFERS, DISCHARGES, DISPLACEMENT, BY FIELD LEAD AND SUSPENSION, DEATH, DISABILITIES AND RETIREMENTS.

DEPARTMENT OF DEFENSE
WASHINGTON HEADQUARTERS SERVICES
DIRECTORATE FOR INFORMATION
OPERATIONS AND REPORTS