

AD-A151 126

CIVILIAN MANPOWER STATISTICS, JANUARY, FY-81. (U)
WASHINGTON HEADQUARTERS SERVICE (DOD) DIR FOR INFO
OP & RPTS. JAN 81. DIOR/MO4-81/04

1/1

UNCLASSIFIED

F/G 5/9

N/L

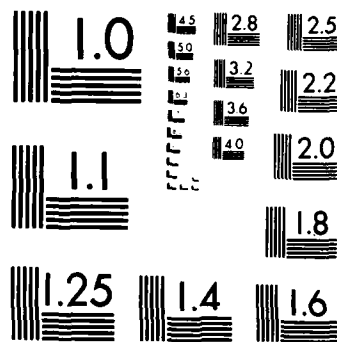
1 OF 1
AD-A151 126

END

FILMED:
11 04 85

1 OF 1

AD-A151 126



MICROCOPY RESOLUTION TEST CHART
NATIONAL BUREAU OF STANDARDS-1963 A

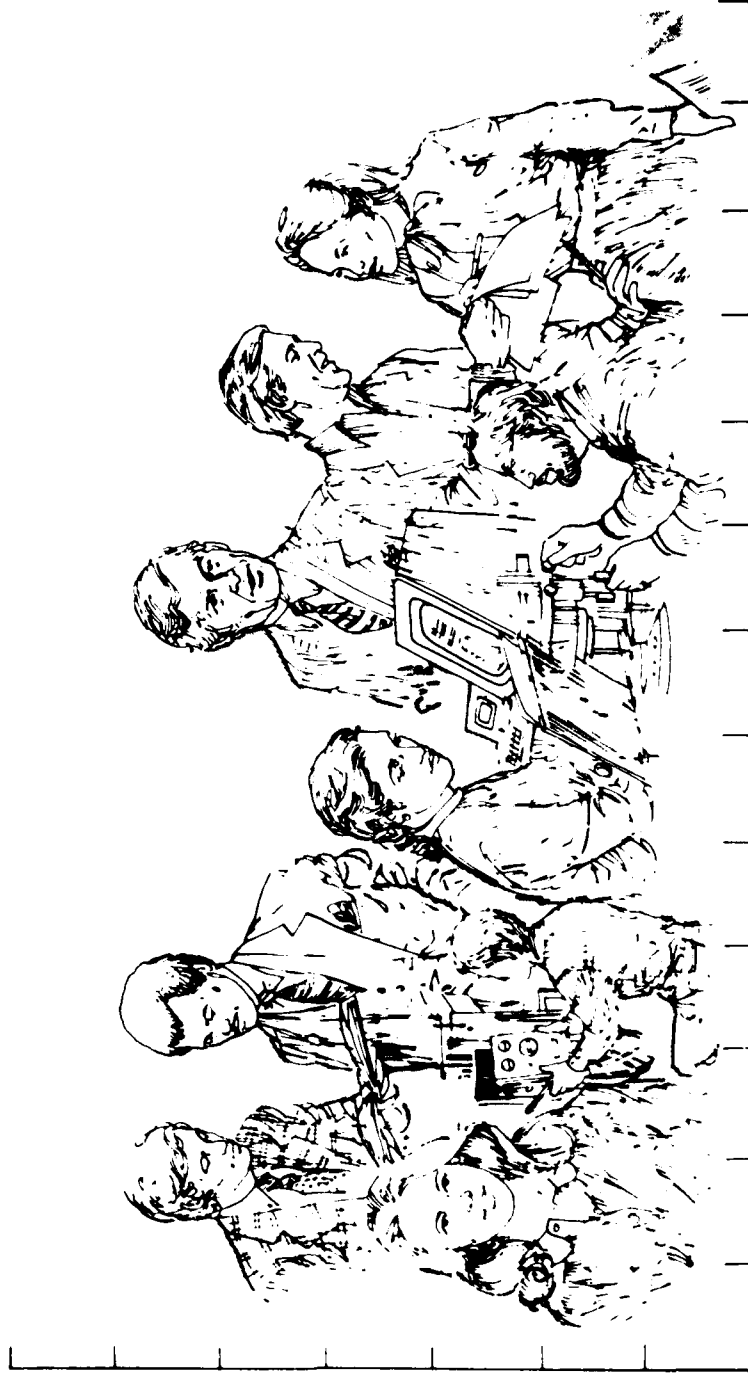
**THIS REPORT IS UNCLASSIFIED AND
ITS DISTRIBUTION IS UNLIMITED**



Department of Defense

CIVILIAN MANPOWER STATISTICS

JANUARY 1981

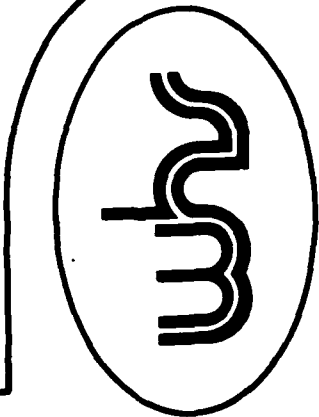
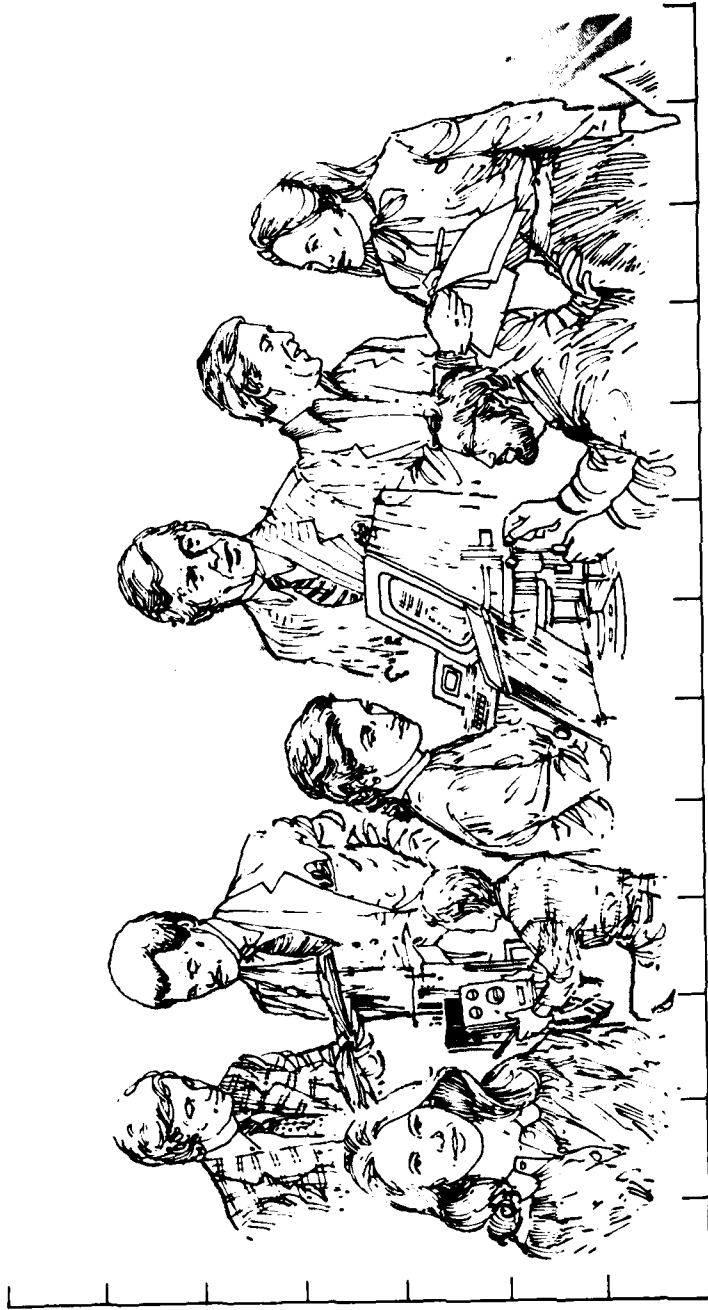




Department of Defense
CIVILIAN MANPOWER STATISTICS

OSD

WASHINGTON HEADQUARTERS SERVICES



DIRECTORATE FOR INFORMATION
 OPERATIONS AND REPORTS (DIOR)
 THE PENTAGON, WASHINGTON, D.C.

FOREWORD

CIVILIAN MANPOWER STATISTICS (CMS) is a monthly publication prepared by the Washington Headquarters Services, Directorate for Information Operations and Reports (WHS/DIOR) of the Office of the Secretary of Defense.

CMS presents audited statistical data pertaining to civilian personnel of the Department of Defense. This publication is produced from the same computerized data base maintained and utilized by WHS/DIOR for the submission of the Monthly Report of Federal Civilian Employment (SF 113-A) to the Office of Personnel Management.

In the past, the tables in this report had been assigned so-called "p" numbers. Beginning with the September 30, 1980 publication of CMS, the tables have been renumbered consecutively. For purposes of clarification, the former "p" number has been placed parenthetically in the title line of each table.

Requests for additional copies and changes in distribution and addresses should be addressed to the Director, Washington Headquarters Services, Room 3E843, The Pentagon, Washington, DC 20301.

TABLE OF CONTENTS

<u>Number</u>	<u>Title</u>
Table 1	Department of Defense Civilian and Military Personnel, OSD-JCS and Other Defense Activities (P12.2)
Table 2	Department of Defense Direct Hire Civilian Employment (P30.10)
Table 3	Department of Defense Summary of Civilian Employment (P30.11)
Table 4	Department of Defense Civilian Personnel by Category (P31.0)
Table 5	Department of Defense Civilian Personnel by Location (P32.0)
Table 6	Department of Defense Indirect Hire Personnel by Country (P32.6)
Table 7	Department of Defense Monthly Accessions and Separations of Direct Hire Civilian Employees (P33.1)
Table 8	Department of Defense Monthly Separations of Department of Defense Direct Hire Civilian Employees by Cause (P33.2)

TABLE 1

DEPARTMENT OF DEFENSE
CIVILIAN AND MILITARY PERSONNEL
OSD-JCS AND OTHER DEFENSE ACTIVITIES (P12.2)

JANUARY 31, 1981

COMPONENT	TOTAL		MILITARY	
	CIVILIAN	TOTAL	OFFICER	ENLISTED
TOTALS	84,773	77,612	4,201	2,960
OSD & RELATED ACTIVITIES*	4,132	2,416	1,194	522
DEFENSE AUDIT SERVICE	382	-	-	-
DEFENSE COMMUNICATIONS AGENCY	3,101	1,631	468	1,002
DEFENSE CONTRACT AUDIT AGENCY	3,427	3,427	-	-
DEFENSE INTELLIGENCE AGENCY	4,336	2,579	1,126	631
DEFENSE INVESTIGATIVE SERVICE	2,357	2,183	91	83
DEFENSE LOGISTICS AGENCY	46,264	45,321	784	159
DEFENSE MAPPING AGENCY	8,815	8,375	186	254
DEFENSE NUCLEAR AGENCY	1,084	603	292	189
DEPARTMENT OF DEFENSE DEPENDENTS SCHOOLS	9,699	9,699	-	-
UNIFORMED SERVICES UNIVERSITY OF HEALTH SCIENCES	631	555	45	31
DEFENSE AUDIO-VISUAL AGENCY	545	441	15	89

* INCLUDES OSD-JCS, AFIS, CHAMPUS, DARPA, DSAA, TRIMIS, USCMA, AND WHS.

DEPARTMENT OF DEFENSE
WASHINGTON HEADQUARTERS SERVICES
DIRECTORATE FOR INFORMATION
OPERATIONS AND REPORTS

TABLE 2

DEPARTMENT OF DEFENSE
DIRECT HIRE CIVILIAN EMPLOYMENT (P30.10)A/

COMPONENT	FULL-TIME IN PERMANENT POSITIONS				TOTAL EMPLOYMENT		
	DEC 31, 80	JAN 31, 81	SEP 30, 81 B/	DEC 31, 80	JAN 31, 80	SEP 30, 81 B/	
MILITARY FUNCTIONS:							
ARMY	285,514	284,062	281,455	309,337	309,011	308,342	
NAVY	292,851	294,668	290,957	310,112	312,627	301,511	
AIR FORCE	221,292	219,926	215,742	231,141	229,377	227,178	
OSD & RELATED ACTIVITIES*	2,182	2,173	2,366	2,417	2,402	2,549	
DEFENSE AUDIT SERVICE	375	377	401	377	379	403	
DEFENSE COMMUNICATIONS AGENCY	1,527	1,549	1,608	1,558	1,587	1,631	
DEFENSE CONTRACT AUDIT AGENCY	3,368	3,363	3,402	3,415	3,407	3,464	
DEFENSE INTELLIGENCE AGENCY	2,564	2,555	2,566	2,585	2,579	2,571	
DEFENSE INVESTIGATIVE SERVICE	2,133	2,151	2,654	2,138	2,153	2,657	
DEFENSE LOGISTICS AGENCY	43,652	43,375	45,096	44,654	44,512	45,796	
DEFENSE MAPPING AGENCY	8,130	8,103	8,075	8,287	8,281	8,135	
DEFENSE NUCLEAR AGENCY	563	562	638	582	585	638	
DEPARTMENT OF DEFENSE DEPENDENTS SCHOOLS	7,109	7,093	8,917	9,469	9,699	9,962	
UNIFORM SERVICES UNIVERSITY OF THE HEALTH SCIENCES	474	497	580	539	555	620	
DEFENSE AUDIOVISUAL AGENCY	414	427	543	433	439	543	
TOTAL, MILITARY FUNCTIONS	872,148	870,881	865,000	927,044	927,593	916,000	
CIVIL FUNCTIONS	27,979	27,938	N/A	33,622	33,111		
TOTAL DOD	900,127	898,819		960,666	960,704		

A/ OMB CEILING EMPLOYMENT. EXCLUDES NSA AND YOUTH PROGRAMS.

B/ PRESIDENT'S FY81 BUDGET PLAN.

* INCLUDES OSD-JCS, AFIS, CHAMPUS, DARPA, DSA, TRIMIS, USCSMA AND WHS.

DEPARTMENT OF DEFENSE
WASHINGTON HEADQUARTERS SERVICES
DIRECTORATE FOR INFORMATION
OPERATIONS AND REPORTS

TABLE 3

DEPARTMENT OF DEFENSE
SUMMARY OF CIVILIAN EMPLOYMENT (P30.11)

DEPARTMENT AND FUNCTION	30 SEP 77	30 SEP 78	30 SEP 79	30 SEP 80	30 NOV 80	31 DEC 80
<u>DIRECT HIRE A/</u>						
TOTAL DEPARTMENT OF DEFENSE	972,407	969,293	949,106	948,397	960,666	960,704
MILITARY FUNCTIONS	939,021	935,703	915,764	915,786	927,044	927,593
CIVIL FUNCTIONS	33,386	33,590	33,342	32,611	33,622	33,111
TOTAL ARMY	348,418	349,664	342,811	344,403	342,956	342,119
MILITARY FUNCTIONS	315,037	316,078	309,475	311,795	309,337	309,011
CIVIL FUNCTIONS	33,381	33,586	33,336	32,608	33,619	33,108
TOTAL NAVY	306,668	306,420	299,449	297,984	310,112	312,627
TOTAL AIR FORCE	240,824	237,028	231,844	230,941	231,144	229,380
MILITARY FUNCTIONS	240,819	237,024	231,838	230,938	231,141	229,377
CIVIL FUNCTIONS	5	4	6	3	3	3
TOTAL OTHER DEFENSE ACTIVITIES	76,497	76,181	75,002	75,069	76,454	76,578
<u>INDIRECT HIRE B/</u>						
TOTAL DEPARTMENT OF DEFENSE	83,395	81,048	75,317	74,570	74,758	74,617
ARMY	56,528	55,291	49,646	48,713	49,093	48,966
NAVY	10,944	10,376	10,727	10,731	10,654	10,696
AIR FORCE	14,502	14,067	13,244	13,404	13,261	13,229
OTHER DEFENSE ACTIVITIES	1,421	1,314	1,700	1,722	1,750	1,726

A/ "TOTAL OMB CEILING EMPLOYEES" AS REPORTED OFFICIALLY TO THE OFFICE OF PERSONNEL MANAGEMENT ON SF 113-A. EXCLUDES YOUTH PROGRAMS.

B/ FOREIGN NATIONALS SUPPORTING U.S. MILITARY FORCES OVERSEAS UNDER AGREEMENTS WITH FOREIGN GOVERNMENTS.

DEPARTMENT OF DEFENSE
WASHINGTON HEADQUARTERS SERVICES
DIRECTORATE FOR INFORMATION
OPERATIONS AND REPORTS

TABLE 4
 DEPARTMENT OF DEFENSE
 CIVILIAN PERSONNEL BY CATEGORY (P31.0)
 JANUARY 1981

	ARMY	NAVY	AIR FORCE	OTHER DEFENSE ACTIVITIES	TOTAL DEPT OF DEFENSE
WORLDWIDE TOTAL	395514	327859	244896	79338	1047607
DIRECT HIRE (†)	346548	317163	231667	77612	972990
BY FULL-TIME & PART-TIME					
FULL-TIME	335860	310511	226727	74607	947705
PART-TIME & INTERMITTENT	8551	6138	3000	2157	19846
BY CITIZENSHIP:					
U.S. CITIZENS (††)	330518	302515	224984	76979	934996
FOREIGN NATIONALS	16030	14648	6683	633	37994
BY SALARIED & WAGE BOARD					
SALARIED	233508	174740	144742	66240	619230
WAGE BOARD	113040	142423	86925	11372	353760
INDIRECT HIRE (†††)	48966	10696	13229	1726	74617
TOTAL U.S. CITIZENS	330518	302515	224984	76979	934996
TOTAL FOREIGN NATIONALS	64996	25344	19912	2359	112611

(†) TOTAL PAID EMPLOYEES AS REPORTED TO THE OFFICE OF PERSONNEL MANAGEMENT ON STANDARD FORM 113A.
 (††) INCLUDES CITIZENS OF U.S. TERRITORIES.
 (†††) FOREIGN NATIONALS SUPPORTING U.S. MILITARY IN OVERSEAS AREAS UNDER CONTRACT/AGREEMENT WITH FOREIGN GOVERNMENTS.

DEPARTMENT OF DEFENSE
 WASHINGTON HEADQUARTERS SERVICES
 DIRECTORATE FOR INFORMATION
 OPERATIONS AND REPORTS

TABLE 5

DEPARTMENT OF DEFENSE
CIVILIAN PERSONNEL BY LOCATION (P32.0)
JANUARY 1981

	ARMY	NAVY	AIR FORCE	OTHER DEFENSE ACTIVITIES	TOTAL DEPT OF DEFENSE
WORLDWIDE TOTAL	395514	327859	244896	79338	1047607
UNITED STATES (DIRECT HIRE)	311197	295466	219261	67008	892932
BY LOCATION					
WASHINGTON, D.C.	25285	34498	6010	13323	79116
REMAINDER OF U.S. (†)	285912	260968	213251	53685	813816
BY SALARIED & WAGE BOARD					
SALARIED	217895	165709	133833	55811	573248
WAGE BOARD	93302	129757	85428	11197	319684
U.S. TERRITORIES (DIRECT HIRE)	1094	4383	892	76	6445
BY CITIZENSHIP:					
U.S. CITIZENS (††)	1093	4334	891	44	6362
FOREIGN NATIONALS	1	49	1	32	83
BY SALARIED & WAGE BOARD					
SALARIED	735	1789	376	66	2966
WAGE BOARD	359	2594	516	10	3479
FOREIGN COUNTRIES	83223	28010	24743	12254	148230
DIRECT HIRE	34257	17314	11514	10528	73613
BY CITIZENSHIP:					
U.S. CITIZENS (††)	18522	2715	4874	9947	36058
FOREIGN NATIONALS	15735	14599	6640	581	37555
BY SALARIED & WAGE BOARD					
SALARIED	14878	7242	10533	10363	43016
WAGE BOARD	19379	10072	981	165	30597
INDIRECT HIRE (FOREIGN NATIONALS)	48966	10696	13229	1726	74617

(†) INCLUDES ALASKA AND HAWAII

(††) INCLUDES EMPLOYEES WHO ARE U.S. CITIZENS BY VIRTUE OF CITIZENSHIP IN A U.S. TERRITORY

DEPARTMENT OF DEFENSE
WASHINGTON HEADQUARTERS SERVICES
DIRECTORATE FOR INFORMATION
OPERATIONS AND REPORTS

TABLE 6

DEPARTMENT OF DEFENSE
INDIRECT HIRE PERSONNEL BY COUNTRY (P32.6)

JANUARY 31, 1981

COUNTRY	TOTAL	ARMY	NAVY	AIR FORCE	OTHER DEFENSE ACTIVITIES
TOTAL	74,617	48,966	10,696	13,229	1,726
BELGIUM	446	431	-	-	15
GERMANY	49,037	41,714	27	6,036	1,260
GREECE (INCLUDES CRETE)	578	15	117	430	16
JAPAN (INCLUDES OKINAWA)	17,807	3,470	9,367	4,719	251
KOREA	3,082	3,082	-	-	-
GUAM	4	-	4	-	-
NETHERLANDS	337	254	-	70	13
PHILIPPINES	7	-	6	-	1
PORTUGAL	-	-	-	-	-
SPAIN	2,008	-	1,111	819	78
UNITED KINGDOM	1,311	-	64	1,155	92

INDIRECT HIRE PERSONNEL ARE FOREIGN NATIONALS SUPPORTING U.S. MILITARY AGENCIES UNDER CONTRACT OR AGREEMENTS WITH FOREIGN GOVERNMENTS.

DEPARTMENT OF DEFENSE
WASHINGTON HEADQUARTERS SERVICES
DIRECTORATE FOR INFORMATION
OPERATIONS AND REPORTS

TABLE 7

DEPARTMENT OF DEFENSE
MONTHLY ACCESSIONS AND SEPARATIONS OF DIRECT HIRE CIVILIAN EMPLOYEES (P33.1)

DATE	ACCESSIONS		SEPARATIONS	
	NUMBER	RATE	NUMBER	RATE
1980				
JANUARY	15,754	1.63	19,744	2.05
FEBRUARY	12,841	1.33	12,958	1.34
MARCH	17,794	1.84	15,575	1.61
APRIL	15,226	1.57	12,488	1.29
MAY	18,584	1.91	13,311	1.37
JUNE	35,078	3.55	22,012	2.23
JULY	16,997	1.72	15,140	1.53
AUGUST	19,622	2.02	34,671	3.56
SEPTEMBER	25,301	2.64	38,376	4.00
OCTOBER	23,733	2.45	13,652	1.41
NOVEMBER	12,973	1.34	11,312	1.16
DECEMBER	12,508	1.29	10,351	1.06
1981				
JANUARY	18,714	1.92	19,917	2.05

DEPARTMENT OF DEFENSE
WASHINGTON HEADQUARTERS SERVICES
DIRECTORATE FOR INFORMATION
OPERATIONS AND REPORTS

TABLE 8

DEPARTMENT OF DEFENSE
MONTHLY SEPARATIONS OF DOD DIRECT HIRE CIVILIAN EMPLOYEES BY CAUSE (P33.2)

WORLDWIDE

CALENDAR YEAR	TOTAL	QUIT	RIF	TERMINATION A/	OTHER B/
1980					
JANUARY	19,744	5,239	152	2,134	12,219
FEBRUARY	12,958	4,247	82	1,441	7,188
MARCH	15,575	4,642	101	1,862	8,970
APRIL	12,488	4,597	87	2,032	5,772
MAY	13,311	5,087	73	2,537	5,614
JUNE	22,012	5,864	121	2,739	13,288
JULY	15,140	6,165	151	2,707	6,117
AUGUST	34,671	15,070	144	7,226	12,231
SEPTEMBER	38,376	13,502	243	14,302	10,329
OCTOBER	13,652	4,812	117	3,967	4,756
NOVEMBER	11,312	3,952	65	2,470	4,825
DECEMBER	10,351	2,985	69	1,858	5,439
1981					
JANUARY	19,917	5,123	169	2,263	12,362

A/ TERMINATIONS OF TEMPORARY OR EXCEPTED APPOINTMENTS OR OF PERSONAL SERVICE CONTRACTS.

B/ INCLUDES TRANSFERS, DISCHARGES, DISPLACEMENT, EXTENDED LWOP AND SUSPENSION, DEATH, DISABILITIES AND RETIREMENTS.

DEPARTMENT OF DEFENSE
WASHINGTON HEADQUARTERS SERVICES
DIRECTORATE FOR INFORMATION
OPERATIONS AND REPORTS

