

AD-A151 127

CIVILIAN MANPOWER STATISTICS, FEBRUARY, FY-81. (U)
WASHINGTON HEADQUARTERS SERVICE (DOD) DIR FOR INFO
OP & RPTS. FEB 81. DIOR/M04-81/05

1/1

UNCLASSIFIED

F/G 5/9

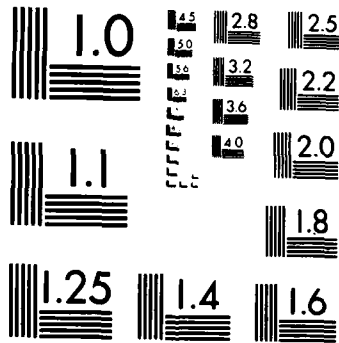
N/L

1 OF 1
AD-A151 127

END
FILMED:
11 04 85

1 OF 1

AD-A151 127



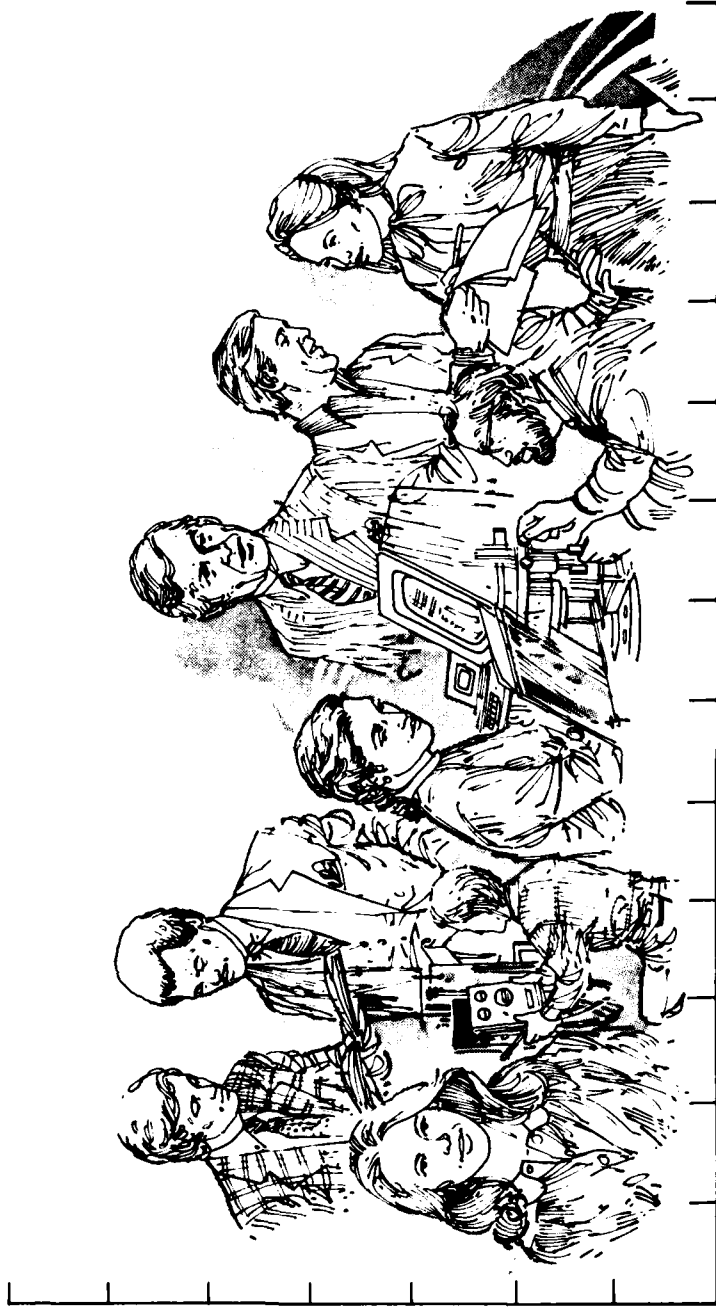
MICROCOPY RESOLUTION TEST CHART
NATIONAL BUREAU OF STANDARDS-1963-A

**THIS REPORT IS UNCLASSIFIED AND
ITS DISTRIBUTION IS UNLIMITED**



Department of Defense

CIVILIAN MANPOWER STATISTICS



OSD

WASHINGTON HEADQUARTERS SERVICES

DIRECTORATE FOR INFORMATION
OPERATIONS AND REPORTS (DIOR)
THE PENTAGON, WASHINGTON, D.C.

FOREWORD

CIVILIAN MANPOWER STATISTICS (CMS) is a monthly publication prepared by the Washington Headquarters Services, Directorate for Information Operations and Reports (WHS/DIOR) of the Office of the Secretary of Defense.

CMS presents audited statistical data pertaining to civilian personnel of the Department of Defense. This publication is produced from the same computerized data base maintained and utilized by WHS/DIOR for the submission of the Monthly Report of Federal Civilian Employment (SF 113-A) to the Office of Personnel Management.

In the past, the tables in this report had been assigned so-called "p" numbers. Beginning with the September 30, 1980 publication of CMS, the tables have been renumbered consecutively. For purposes of clarification, the former "p" number has been placed parenthetically in the title line of each table.

Requests for additional copies and changes in distribution and addresses should be addressed to the Director, Washington Headquarters Services, Room 3E843, The Pentagon, Washington, DC 20301.

TABLE OF CONTENTS

<u>Number</u>	<u>Title</u>
Table 1	Department of Defense Civilian and Military Personnel, OSD-JCS and Other Defense Activities (P12.2)
Table 2	Department of Defense Direct Hire Civilian Employment (P30.10)
Table 3	Department of Defense Summary of Civilian Employment (P30.11)
Table 4	Department of Defense Civilian Personnel by Category (P31.0)
Table 5	Department of Defense Civilian Personnel by Location (P32.0)
Table 6	Department of Defense Indirect Hire Personnel by Country (P32.6)
Table 7	Department of Defense Monthly Accessions and Separations of Direct Hire Civilian Employees (P33.1)
Table 8	Department of Defense Monthly Separations of Department of Defense Direct Hire Civilian Employees by Cause (P33.2)

TABLE 1

DEPARTMENT OF DEFENSE
CIVILIAN AND MILITARY PERSONNEL
OSD-JCS AND OTHER DEFENSE ACTIVITIES (P12.2)

FEBRUARY 28, 1981

COMPONENT	TOTAL	CIVILIAN	TOTAL	MILITARY	
				OFFICER	ENLISTED
TOTALS	84,751	77,533	7,218	4,235	2,983
OSD & RELATED ACTIVITIES*					
DEFENSE AUDIT SERVICE	4,161	2,431	1,730	1,208	522
DEFENSE COMMUNICATIONS AGENCY	378	378	-	-	-
DEFENSE CONTRACT AUDIT AGENCY	3,092	1,624	1,468	463	1,005
	3,422	3,422	-	-	-
DEFENSE INTELLIGENCE AGENCY	4,342	2,577	1,765	1,130	635
DEFENSE INVESTIGATIVE SERVICE	2,378	2,202	176	92	84
DEFENSE LOGISTICS AGENCY	46,202	45,244	958	796	162
DEFENSE MAPPING AGENCY	8,791	8,347	444	187	257
DEFENSE NUCLEAR AGENCY	1,100	611	489	299	190
DEPARTMENT OF DEFENSE DEPENDENTS SCHOOLS	9,704	9,704	-	-	-
UNIFORMED SERVICES UNIVERSITY OF HEALTH SCIENCES	627	547	80	45	35
DEFENSE AUDIO-VISUAL AGENCY	554	446	108	15	93

* INCLUDES OSD-JCS, AFIS, CHAMPUS, DARPA, DSAA, TRIMIS, USCMA, AND WHS.

DEPARTMENT OF DEFENSE
WASHINGTON HEADQUARTERS SERVICES
DIRECTORATE FOR INFORMATION
OPERATIONS AND REPORTS

TABLE 2

DEPARTMENT OF DEFENSE
DIRECT HIRE CIVILIAN EMPLOYMENT (P30.10)A/

COMPONENT	FULL-TIME IN PERMANENT POSITIONS				TOTAL EMPLOYMENT			
	JAN 31, 81	FEB 28, 81	SEP 30, 81 B/	JAN 31, 81	FEB 28, 81	SEP 30, 81 B/	JAN 31, 81	SEP 30, 81 B/
MILITARY FUNCTIONS:								
ARMY	284,062	284,127	281,455	309,011	308,666	308,342	309,011	308,342
NAVY	294,668	294,846	290,957	312,627	312,202	301,511	312,627	301,511
AIR FORCE	219,926	219,854	215,742	229,377	228,540	227,178	229,377	227,178
OSD & RELATED ACTIVITIES*	2,173	2,203	2,366	2,402	2,420	2,549	2,402	2,549
DEFENSE AUDIT SERVICE	377	374	401	379	375	403	379	403
DEFENSE COMMUNICATIONS AGENCY	1,549	1,550	1,608	1,587	1,582	1,631	1,587	1,631
DEFENSE CONTRACT AUDIT AGENCY	3,363	3,361	3,402	3,407	3,403	3,464	3,407	3,464
DEFENSE INTELLIGENCE AGENCY	2,555	2,554	2,566	2,579	2,577	2,571	2,579	2,571
DEFENSE INVESTIGATIVE SERVICE	2,151	2,171	2,654	2,153	2,173	2,657	2,153	2,657
DEFENSE LOGISTICS AGENCY	43,375	43,279	45,096	44,512	44,420	45,796	44,512	45,796
DEFENSE MAPPING AGENCY	8,103	8,083	8,075	8,281	8,258	8,135	8,281	8,135
DEFENSE NUCLEAR AGENCY	562	564	638	585	582	638	585	638
DEPARTMENT OF DEFENSE DEPENDENT'S SCHOOLS	7,093	7,051	8,917	9,699	9,703	9,962	9,699	9,962
UNIFORM SERVICES UNIVERSITY OF THE HEALTH SCIENCES	497	505	580	555	547	620	555	620
DEFENSE AUDIOVISUAL AGENCY	427	434	543	439	444	543	439	543
TOTAL, MILITARY FUNCTIONS	870,881	870,956	865,000	927,593	925,892	916,000	927,593	916,000
CIVIL FUNCTIONS	27,938	27,884	N/A	33,111	33,059		33,111	
TOTAL DOD	898,819	898,840		960,704	958,951		960,704	

A/ OMB CEILING EMPLOYMENT. EXCLUDES NSA AND YOUTH PROGRAMS.

B/ PRESIDENT'S FY81 BUDGET PLAN.

* INCLUDES OSD-JCS, AFIS, CHAMPUS, DARPA, DSAA, TRIMIS, USCSMA AND WHS.

DEPARTMENT OF DEFENSE
WASHINGTON HEADQUARTERS SERVICES
DIRECTORATE FOR INFORMATION
OPERATIONS AND REPORTS

TABLE 3

DEPARTMENT OF DEFENSE
SUMMARY OF CIVILIAN EMPLOYMENT (P30.11)

DEPARTMENT AND FUNCTION	30 SEP 77	30 SEP 78	30 SEP 79	30 SEP 80	31 JAN 81	28 FEB 81
<u>DIRECT HIRE A/</u>						
TOTAL DEPARTMENT OF DEFENSE	972,407	969,293	949,106	948,397	960,704	958,951
MILITARY FUNCTIONS	939,021	935,703	915,764	915,786	927,593	925,892
CIVIL FUNCTIONS	33,386	33,590	33,342	32,611	33,111	33,059
TOTAL ARMY	348,418	349,664	342,811	344,403	342,119	341,722
MILITARY FUNCTIONS	315,037	316,078	309,475	311,795	309,011	308,666
CIVIL FUNCTIONS	33,381	33,586	33,336	32,608	33,108	33,056
TOTAL NAVY	306,668	306,420	299,449	297,984	312,627	312,202
TOTAL AIR FORCE	240,824	237,028	231,844	230,941	229,380	228,543
MILITARY FUNCTIONS	240,819	237,024	231,838	230,938	229,377	228,540
CIVIL FUNCTIONS	5	4	6	3	3	3
TOTAL OTHER DEFENSE ACTIVITIES	76,497	76,181	75,002	75,069	76,578	76,484
<u>INDIRECT HIRE B/</u>						
TOTAL DEPARTMENT OF DEFENSE	83,395	81,048	75,317	74,570	74,617	74,492
ARMY	56,528	55,291	49,646	48,713	48,966	48,942
NAVY	10,944	10,376	10,727	10,731	10,696	10,672
AIR FORCE	14,502	14,067	13,244	13,404	13,229	13,155
OTHER DEFENSE ACTIVITIES	1,421	1,314	1,700	1,722	1,726	1,723

A/ "TOTAL OMB CEILING EMPLOYEES" AS REPORTED OFFICIALLY TO THE OFFICE OF PERSONNEL
MANAGEMENT ON SF 113-A. EXCLUDES YOUTH PROGRAMS.

B/ FOREIGN NATIONALS SUPPORTING U.S. MILITARY FORCES OVERSEAS UNDER AGREEMENTS
WITH FOREIGN GOVERNMENTS.

DEPARTMENT OF DEFENSE
WASHINGTON HEADQUARTERS SERVICES
DIRECTORATE FOR INFORMATION
OPERATIONS AND REPORTS

TABLE 4

DEPARTMENT OF DEFENSE
CIVILIAN PERSONNEL BY CATEGORY (P31.0)
FEBRUARY 1981

	ARMY	NAVY	AIR FORCE	OTHER DEFENSE ACTIVITIES	TOTAL DEPT OF DEFENSE
WORLDWIDE TOTAL	395246	327438	244252	79256	1046194
DIRECT HIRE (†)	346306	316766	231097	77533	971702
BY FULL-TIME & PART-TIME					
FULL-TIME	335583	309910	226069	74523	946085
PART-TIME & INTERMITTENT	8518	6159	2961	2208	19846
BY CITIZENSHIP:					
U.S. CITIZENS (††)	330278	302133	224460	76890	933761
FOREIGN NATIONALS	16028	14633	6637	643	37941
BY SALARIED & WAGE BOARD					
SALARIED	232922	174599	144597	66137	618255
WAGE BOARD	113384	142167	86500	11396	353447
INDIRECT HIRE (†††)	48942	10672	13155	1723	74492
TOTAL U.S. CITIZENS	330278	302133	224460	76890	933761
TOTAL FOREIGN NATIONALS	64970	25305	19792	2366	112433

- (†) TOTAL PAID EMPLOYEES AS REPORTED TO THE OFFICE
OF PERSONNEL MANAGEMENT ON STANDARD FORM 113A.
(††) INCLUDES CITIZENS OF U.S. TERRITORIES.
(†††) FOREIGN NATIONALS SUPPORTING U.S. MILITARY IN OVER-
SEAS AREAS UNDER CONTRACT/AGREEMENT WITH FOREIGN
GOVERNMENTS.

TABLE 5

 DEPARTMENT OF DEFENSE
 CIVILIAN PERSONNEL BY LOCATION (P32.0)
 FEBRUARY 1981

	ARMY	NAVY	AIR FORCE	OTHER DEFENSE ACTIVITIES	TOTAL DEPT OF DEFENSE
WORLDWIDE TOTAL	395248	327438	244252	79256	1046194
UNITED STATES (DIRECT HIRE)	310809	295104	218779	66925	891617
BY LOCATION					
WASHINGTON, D.C.	25171	34350	6007	13328	78856
REMAINDER OF U.S. (†)	285638	260754	212772	53597	812761
BY SALARIED & WAGE BOARD					
SALARIED	217665	165568	133780	55697	572710
WAGE BOARD	93144	129536	84999	11228	318907
U.S. TERRITORIES (DIRECT HIRE)	1086	4360	878	85	6409
BY CITIZENSHIP:					
U.S. CITIZENS (††)	1085	4312	877	44	6318
FOREIGN NATIONALS	1	48	1	41	91
BY SALARIED & WAGE BOARD					
SALARIED	731	1776	367	75	2949
WAGE BOARD	355	2584	511	10	3460
FOREIGN COUNTRIES	83353	27974	24595	12246	148168
DIRECT HIRE	34411	17302	11440	10523	73676
BY CITIZENSHIP:					
U.S. CITIZENS (††)	18688	2717	4842	9941	36188
FOREIGN NATIONALS	15723	14585	6598	582	37488
BY SALARIED & WAGE BOARD					
SALARIED	14526	7255	10450	10365	42596
WAGE BOARD	19885	10047	990	158	31080
INDIRECT HIRE (FOREIGN NATIONALS)	48942	10672	13155	1723	74492

(†) INCLUDES ALASKA AND HAWAII

(††) INCLUDES EMPLOYEES WHO ARE U.S. CITIZENS BY VIRTUE OF CITIZENSHIP IN A U.S. TERRITORY

 DEPARTMENT OF DEFENSE
 WASHINGTON HEADQUARTERS SERVICES
 DIRECTORATE FOR INFORMATION
 OPERATIONS AND REPORTS

TABLE 6

DEPARTMENT OF DEFENSE
INDIRECT HIRE PERSONNEL BY COUNTRY (P32.6)

FEBRUARY 28, 1981

COUNTRY	TOTAL	ARMY	NAVY	AIR FORCE	OTHER DEFENSE ACTIVITIES
TOTAL	74,492	48,942	10,672	13,155	1,723
BELGIUM	450	436	-	-	14
GERMANY	48,931	41,691	27	5,973	1,240
GREECE (INCLUDES CRETE)	581	15	117	430	19
JAPAN (INCLUDES OKINAWA)	17,776	3,467	9,339	4,717	253
KOREA	3,074	3,074	-	-	-
GUAM	4	-	4	-	-
NETHERLANDS	343	259	-	70	14
PHILIPPINES	7	-	6	-	1
PORTUGAL	-	-	-	-	-
SPAIN	2,011	-	1,115	814	82
UNITED KINGDOM	1,315	-	64	1,151	100

INDIRECT HIRE PERSONNEL ARE FOREIGN NATIONALS SUPPORTING U.S. MILITARY FORCES UNDER CONTRACT OR AGREEMENTS WITH FOREIGN GOVERNMENTS.

DEPARTMENT OF DEFENSE
WASHINGTON HEADQUARTERS SERVICES
DIRECTORATE FOR INFORMATION
OPERATIONS AND REPORTS

TABLE 7

DEPARTMENT OF DEFENSE
MONTHLY ACCESSIONS AND SEPARATIONS OF DIRECT HIRE CIVILIAN EMPLOYEES (P33.1)

DATE	ACCESSIONS		SEPARATIONS	
	NUMBER	RATE	NUMBER	RATE
1980				
JANUARY	15,754	1.63	19,744	2.05
FEBRUARY	12,841	1.33	12,958	1.34
MARCH	17,794	1.84	15,575	1.61
APRIL	15,226	1.57	12,488	1.29
MAY	18,584	1.91	13,311	1.37
JUNE	35,078	3.55	22,012	2.23
JULY	16,997	1.72	15,140	1.53
AUGUST	19,622	2.02	34,671	3.56
SEPTEMBER	25,301	2.64	38,376	4.00
OCTOBER	23,733	2.45	13,652	1.41
NOVEMBER	12,973	1.34	11,312	1.16
DECEMBER	12,508	1.29	10,351	1.06
1981				
JANUARY	18,714	1.92	19,917	2.05
FEBRUARY	7,734	0.80	9,983	1.03

DEPARTMENT OF DEFENSE
WASHINGTON HEADQUARTERS SERVICES
DIRECTORATE FOR INFORMATION
OPERATIONS AND REPORTS

TABLE 8

DEPARTMENT OF DEFENSE
MONTHLY SEPARATIONS OF DOD DIRECT HIRE CIVILIAN EMPLOYEES BY CAUSE (P33.2)

WORLDWIDE

CALENDAR YEAR	TOTAL	QUIT	RIF	TERMINATION A/	OTHER B/
1980					
JANUARY	19,744	5,239	152	2,134	12,219
FEBRUARY	12,958	4,247	82	1,441	7,188
MARCH	15,575	4,642	101	1,862	8,970
APRIL	12,488	4,597	87	2,032	5,772
MAY	13,311	5,087	73	2,537	5,614
JUNE	22,012	5,864	121	2,739	13,288
JULY	15,140	6,165	151	2,707	6,117
AUGUST	34,671	15,070	144	7,226	12,231
SEPTEMBER	38,376	13,502	243	14,302	10,329
OCTOBER	13,652	4,812	117	3,967	4,756
NOVEMBER	11,312	3,952	65	2,470	4,825
DECEMBER	10,351	2,985	69	1,858	5,439
1981					
JANUARY	19,917	5,123	169	2,263	12,362
FEBRUARY	9,983	3,896	63	1,314	4,710

A/ TERMINATIONS OF TEMPORARY OR EXCEPTED APPOINTMENTS OR OF PERSONAL SERVICE CONTRACTS.

B/ INCLUDES TRANSFERS, DISCHARGES, DISPLACEMENT, EXTENDED LWOP AND SUSPENSION, DEATH, DISABILITIES AND RETIREMENTS.

DEPARTMENT OF DEFENSE
WASHINGTON HEADQUARTERS SERVICES
DIRECTORATE FOR INFORMATION
OPERATIONS AND REPORTS

