

AD-A151 129

CIVILIAN MANPOWER STATISTICS, APRIL, FY-81. (U)
WASHINGTON HEADQUARTERS SERVICE (DOD) DIR FOR INFO
OP & RPTS. APR 81. DIOR/MO4-81/07

1/1

UNCLASSIFIED

F/G 5/9

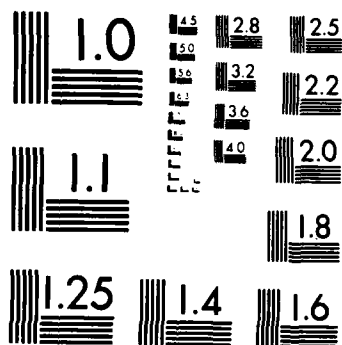
N/L

1 OF 1
AD-A151 129

END
FILMED
11-04-85

1 OF 1

AD-A151 129



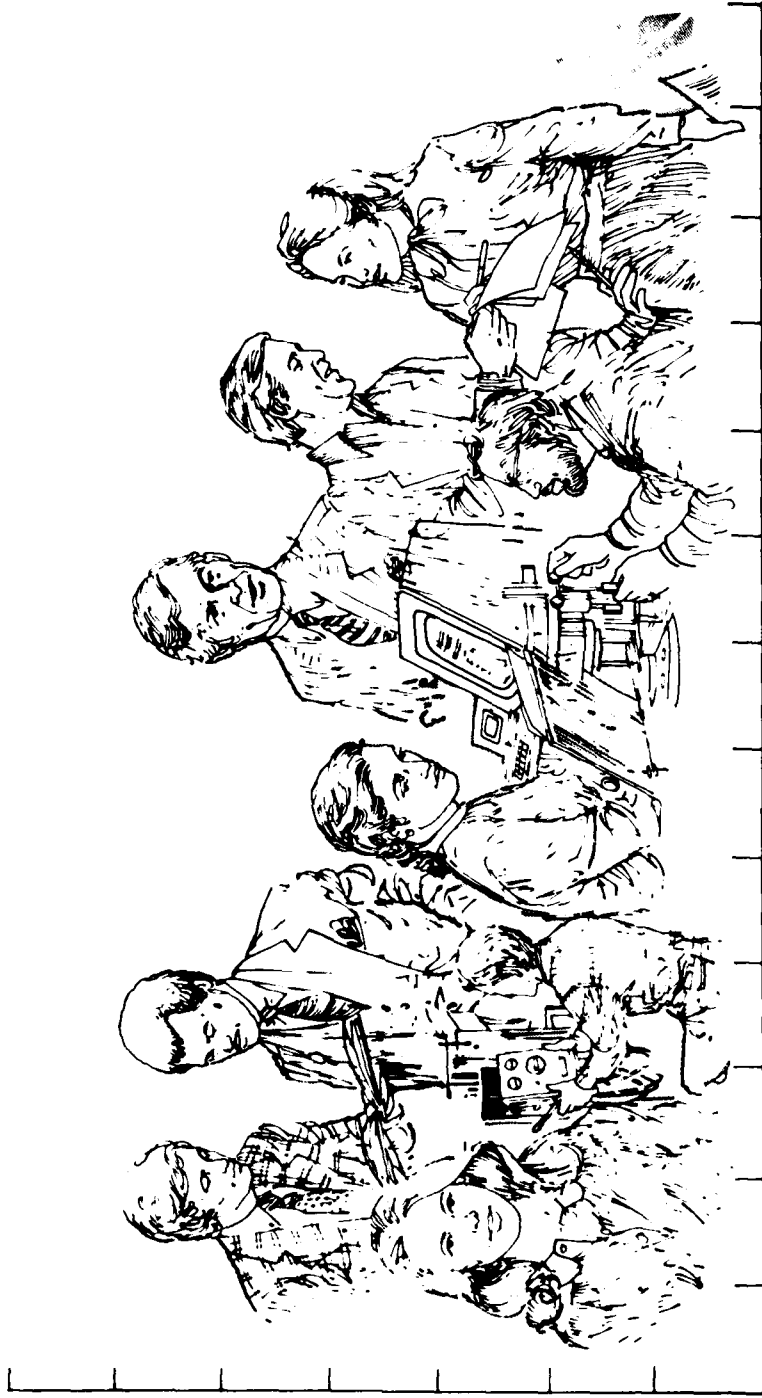
MICROCOPY RESOLUTION TEST CHART
NATIONAL BUREAU OF STANDARDS-1963-A

**THIS REPORT IS UNCLASSIFIED AND
ITS DISTRIBUTION IS UNLIMITED.**

Department of Defense

CIVILIAN MANPOWER STATISTICS

APRIL 1981



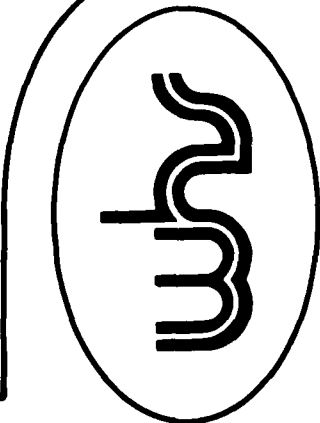
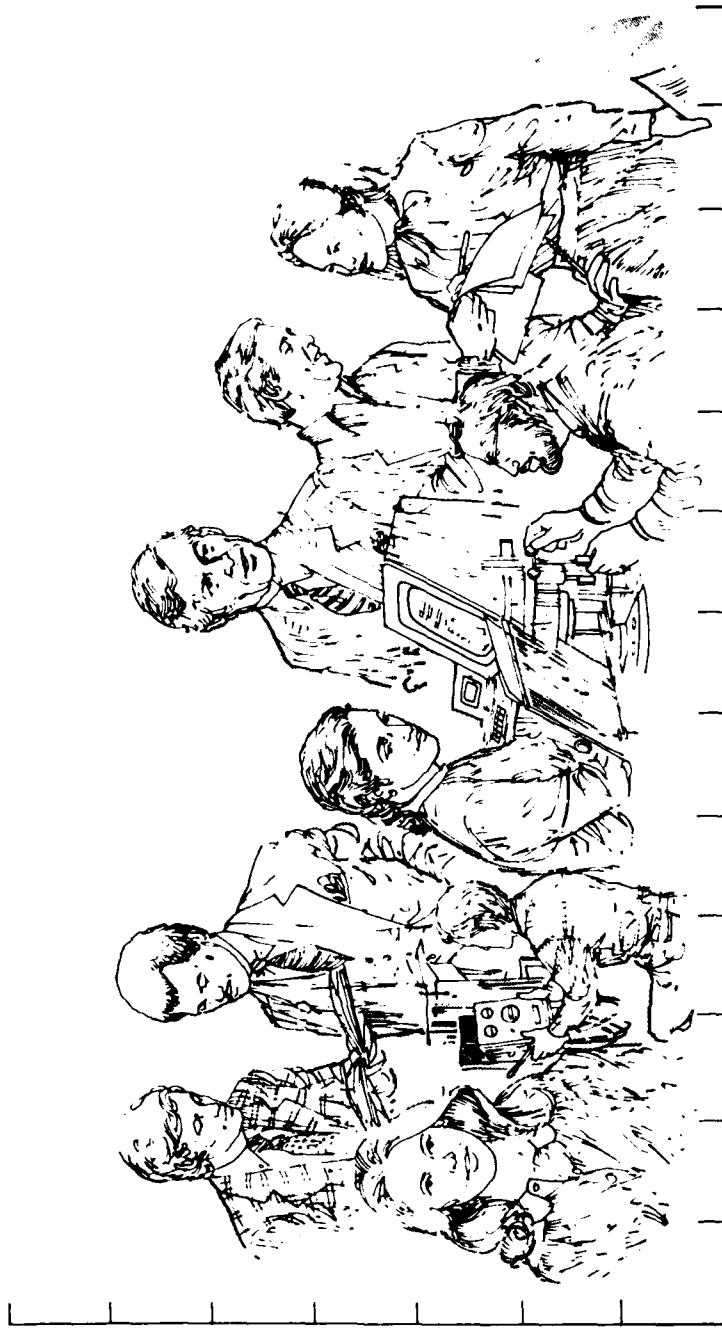
U.S.



Department of Defense
CIVILIAN MANPOWER STATISTICS

OSD

WASHINGTON HEADQUARTERS SERVICES



**DIRECTORATE FOR INFORMATION
 OPERATIONS AND REPORTS (DIOR)
 THE PENTAGON, WASHINGTON, D.C.**

FOREWORD

CIVILIAN MANPOWER STATISTICS (CMS) is a monthly publication of Washington Headquarters Services, Directorate for Information Operations and Reports (WHS/DIOR) of the Office of the Secretary of Defense.

CMS provides audited, statistical information on the entire civilian workforce of the Department of Defense with the exception of personnel of the National Security Agency. It is produced primarily from a computerized data base developed and maintained by WHS/DIOR from monthly information provided to the Office of Personnel Management on SF 113-A, Monthly Report of Federal Civilian Employment.

Questions on material in this publication and requests for additional copies or changes in distribution should be addressed to the Director, Washington Headquarters Services, Room 3E843, The Pentagon, Washington, D.C. 20301.

G L O S S A R Y

1. Military Functions. Activities normally associated with the uniform services.
2. Civil Functions. Functions primarily associated with the Civil Works program of the Army Corps of Engineers. This program encompasses planning, programming, designing, constructing, and operating Federal water resource projects for navigation, flood control, hydroelectric power, water supply, recreation, and related activities. Civil Functions also includes cemeterial workers (Army) and several wildlife conservation funded employees (Air Force).
3. Direct Hire Civilians. Employees hired directly by an agency of the Department of Defense. Included are foreign nationals hired by the Department of Defense to support DoD activities in their home countries.
4. Indirect Hire Civilians. Foreign nationals assigned to support U.S. forces through contracts or agreements with foreign governments (or agencies thereof). These personnel are employees of the foreign governments involved.
5. Total Paid Civilian Employment. Total direct and indirect hire civilian employment. For direct hire, includes, with some exceptions, all direct hire employees who had not officially separated as of the report date and who either worked during the reporting period or were on paid leave.
6. OMB Ceiling Employment. Employees subject to Office of Management and Budget (OMB) ceilings established to administer Presidential employment ceiling limitations. For direct hire employees, it excludes employees such as Summer Aids or in the Stay-in-School, Federal Junior Fellowship, and Worker-Trainee Opportunity Programs, and those who are covered by other official exemptions granted by OMB.
7. Agencies.

OSD-JCS = Office of the Secretary of Defense and Office of the Joint Chiefs of Staff
AFIS = Armed Forces Information Service
CHAMPUS = Civilian Health and Medical Program of the Uniform Services
DARPA = Defense Advanced Research Projects Agency
DSAA = Defense Security Assistance Agency
TRIMIS = Tri-Service Medical Information System
USCMA = U.S. Court of Military Appeals
OEA = Office of Economic Adjustment
MHS = Washington Headquarters Services

LIST OF TABLES

<u>Number</u>	<u>Former Designation</u>	<u>Title</u>	<u>PAGE</u>
Table 1	P30.11 (Rev.)	Department of Defense Summary of Civilian Employment Subject to OMB Ceiling	1
Table 2	P30.10	Department of Defense Direct Hire Civilian Employment Subject to OMB Ceiling	2
Table 3	P12.2	Department of Defense Civilian and Military Personnel--OSD-JCS and Other Defense Activities	3
Table 4	P31.0	Department of Defense Total Paid Civilian Employment by Category	4
Table 5	P32.0	Department of Defense Total Paid Civilian Employment by Location	5
Table 6	P32.6	Department of Defense Indirect Hire Personnel by Country	6
Table 7	P33.1	Department of Defense Monthly Accessions and Separations of Direct Hire Civilian Employees	7
Table 8	P33.2	Department of Defense Monthly Separations of Direct Hire Civilian Employees by Cause	8

TABLE 1

DEPARTMENT OF DEFENSE
SUMMARY OF CIVILIAN EMPLOYMENT
SUBJECT TO OMB CEILING

DEPARTMENT AND FUNCTION	SEP 30, 77	SEP 30, 78	SEP 30, 79	SEP 30, 80	MAR 31, 81	APR 30, 81
<u>TOTAL MILITARY AND CIVIL FUNCTIONS</u>	<u>1,055,802</u>	<u>1,050,341</u>	<u>1,024,423</u>	<u>1,022,967</u>	<u>1,035,800</u>	<u>1,041,701</u>
DIRECT HIRE A/ INDIRECT HIRE B/	972,407 83,395	969,293 81,048	949,106 75,317	948,397 74,570	961,126 74,674	966,791 74,910
<u>MILITARY FUNCTIONS</u>	<u>1,022,416</u>	<u>1,016,751</u>	<u>991,081</u>	<u>990,356</u>	<u>1,003,006</u>	<u>1,008,635</u>
DIRECT HIRE INDIRECT HIRE	939,021 83,395	935,703 81,048	915,764 75,317	915,786 74,570	928,332 74,674	933,725 74,910
ARMY DIRECT HIRE INDIRECT HIRE	371,565 315,037 56,528	371,369 316,078 55,291	359,121 309,475 49,646	360,508 311,795 48,713	358,862 309,804 49,058	361,298 312,067 49,231
NAVY DIRECT HIRE INDIRECT HIRE	317,612 306,668 10,944	316,796 306,420 10,376	310,176 299,449 10,727	308,715 297,984 10,731	323,372 312,673 10,699	324,747 314,016 10,731
AIR FORCE DIRECT HIRE INDIRECT HIRE	255,321 240,819 14,502	251,091 237,024 14,067	245,082 231,838 13,244	244,342 230,938 13,404	242,415 229,223 13,192	243,438 230,215 13,223
OTHER DEFENSE ACTIVITIES DIRECT HIRE INDIRECT HIRE	77,918 76,497 1,421	77,495 76,181 1,314	76,702 75,002 1,700	76,791 75,069 1,722	78,357 76,632 1,725	79,152 77,427 1,725
<u>CIVIL FUNCTIONS (ALL DIRECT HIRE)</u>	<u>33,386</u>	<u>33,590</u>	<u>33,342</u>	<u>32,611</u>	<u>32,794</u>	<u>33,066</u>
ARMY AIR FORCE	33,381 5	33,586 4	33,336 6	32,608 3	32,791 3	33,063 3

A/ AS REPORTED OFFICIALLY TO THE OFFICE OF PERSONNEL MANAGEMENT ON LINE 29 OF SF 113-A. EXCLUDES EMPLOYEES EXEMPT FROM THE PRESIDENT'S CEILING CONTROL.

B/ FOREIGN NATIONALS SUPPORTING U.S. MILITARY FORCES OVERSEAS UNDER CONTRACTS OR AGREEMENTS WITH FOREIGN GOVERNMENTS. ALL INDIRECT HIRES SUPPORT MILITARY FUNCTIONS.

TABLE 2

DEPARTMENT OF DEFENSE
DIRECT HIRE CIVILIAN EMPLOYMENT
SUBJECT TO OMB CEILING A/

COMPONENT	TOTAL EMPLOYMENT			FULL-TIME IN PERMANENT POSITIONS		
	MAR 31, 81	APR 30, 81	SEP 30, 81 B/	MAR 31, 81	APR 30, 81	SEP 30, 81 B/
TOTAL MILITARY & CIVIL FUNCTIONS	<u>961,126</u>	<u>966,791</u>	<u>N/A</u>	<u>902,567</u>	<u>906,959</u>	<u>N/A</u>
MILITARY FUNCTIONS	<u>928,332</u>	<u>933,725</u>	<u>930,000</u>	<u>874,711</u>	<u>879,160</u>	<u>879,000</u>
ARMY	309,804	312,067	312,742	285,528	287,232	285,855
NAVY	312,673	314,016	306,671	295,509	297,000	296,117
AIR FORCE	229,223	230,215	230,578	221,220	221,961	219,142
OSD & RELATED ACTIVITIES C/	2,445	2,448	2,599	2,208	2,214	2,416
DEFENSE AUDIOVISUAL AGENCY	451	461	543	440	452	543
DEFENSE AUDIT SERVICE	373	373	403	372	371	401
DEFENSE COMMUNICATIONS AGENCY	1,578	1,584	1,631	1,548	1,555	1,608
DEFENSE CONTRACT AUDIT AGENCY	3,412	3,436	3,514	3,374	3,405	3,452
DEFENSE INTELLIGENCE AGENCY	2,588	2,587	2,571	2,563	2,563	2,566
DEFENSE INVESTIGATIVE SERVICE	2,236	2,298	2,657	2,234	2,294	2,654
DEFENSE LOGISTICS AGENCY	44,736	45,052	46,661	43,631	43,792	45,961
DEFENSE MAPPING AGENCY	8,279	8,322	8,175	8,103	8,155	8,115
DEFENSE NUCLEAR AGENCY	593	599	638	571	588	638
DEPARTMENT OF DEFENSE	9,381	9,701	9,962	6,904	7,067	8,917
DEPENDENT'S SCHOOLS						
UNIFORM SERVICES UNIVERSITY						
OF THE HEALTH SCIENCES	560	566	655	506	511	615
CIVIL FUNCTIONS	<u>32,794</u>	<u>33,066</u>	<u>N/A</u>	<u>27,856</u>	<u>27,799</u>	<u>N/A</u>
ARMY	32,791	33,063		27,853	27,796	
AIR FORCE	3	3		3	3	

A/ AS REPORTED OFFICIALLY TO THE OFFICE OF PERSONNEL MANAGEMENT ON LINE 29 OF SF 113-A.

B/ PRESIDENT'S FY81 BUDGET PLAN (REVISED).

C/ INCLUDES OSD-JCS, AFIS, CHAMPUS, DARPA, DSAA, TRIMIS, USCSMA, OEA, AND WHS.

TABLE 3

DEPARTMENT OF DEFENSE
CIVILIAN AND MILITARY PERSONNEL
OSD-JCS AND OTHER DEFENSE ACTIVITIES

APRIL 30, 1981

COMPONENT	TOTAL	A/ CIVILIAN	TOTAL	MILITARY	
				OFFICER	ENLISTED
<u>TOTALS</u>	<u>85,715</u>	<u>78,515</u>	<u>7,200</u>	<u>4,235</u>	<u>2,965</u>
OSD & RELATED ACTIVITIES B/	4,169	2,458	1,711	1,196	515
DEFENSE AUDIOVISUAL AGENCY	583	463	120	16	104
DEFENSE AUDIT SERVICE	376	376	-	-	-
DEFENSE COMMUNICATIONS AGENCY	3,090	1,627	1,463	466	997
DEFENSE CONTRACT AUDIT AGENCY	3,456	3,456	-	-	-
DEFENSE INTELLIGENCE AGENCY	4,361	2,587	1,774	1,138	636
DEFENSE INVESTIGATIVE SERVICE	2,477	2,316	161	88	73
DEFENSE LOGISTICS AGENCY	46,882	45,928	954	793	161
DEFENSE MAPPING AGENCY	8,850	8,406	444	187	257
DEFENSE NUCLEAR AGENCY	1,123	630	493	306	187
DEPARTMENT OF DEFENSE DEPENDENTS SCHOOLS	9,702	9,702	-	-	-
UNIFORMED SERVICES UNIVERSITY OF THE HEALTH SCIENCES	646	566	80	45	35

A/ INCLUDES TOTAL PAID DIRECT HIRE CIVILIAN EMPLOYMENT AS REPORTED ON LINE 1 OF SF 113-A.

B/ INCLUDES OSD-JCS, AFIS, CHAMPUS, DARPA, DSA, TRIMIS, USCMA, OEA, AND WHS.

TABLE 4

DEPARTMENT OF DEFENSE
TOTAL PAID CIVILIAN EMPLOYMENT BY CATEGORY

APRIL 30, 1981

TYPE PERSONNEL	TOTAL DEPT OF DEFENSE	ARMY	NAVY	AIR FORCE	OTHER DEFENSE ACTIVITIES
<u>WORLDWIDE TOTAL</u>	<u>1,054,748</u>	<u>399,195</u>	<u>329,422</u>	<u>245,891</u>	<u>80,240</u>
<u>DIRECT HIRE A/</u>	<u>979,838</u>	<u>349,964</u>	<u>318,691</u>	<u>232,668</u>	<u>78,515</u>
BY FULL-TIME & PART-TIME:					
FULL-TIME	953,743	339,258	311,522	227,505	75,458
PART-TIME & INTERMITTENT	26,095	10,706	7,169	5,163	3,057
BY CITIZENSHIP:					
U.S. CITIZENS B/ FOREIGN NATIONALS	941,877 37,961	333,873 16,091	304,156 14,535	225,982 6,686	77,866 649
BY SALARIED & WAGE BOARD:					
SALARIED	624,565	235,247	176,004	146,440	66,874
WAGE BOARD	355,273	114,717	142,687	86,228	11,641
<u>INDIRECT HIRE C/</u>	<u>74,910</u>	<u>49,231</u>	<u>10,731</u>	<u>13,223</u>	<u>1,725</u>
<u>TOTAL U.S. CITIZENS</u>	<u>941,877</u>	<u>333,873</u>	<u>304,156</u>	<u>225,982</u>	<u>77,866</u>
<u>TOTAL FOREIGN NATIONALS</u>	<u>112,871</u>	<u>65,322</u>	<u>25,266</u>	<u>19,909</u>	<u>2,374</u>

A/ AS REPORTED TO THE OFFICE OF PERSONNEL MANAGEMENT ON LINE 1 OF SF 113-A.
 B/ INCLUDES U.S. CITIZENS BY VIRTUE OF CITIZENSHIP IN A U.S. TERRITORY.
 C/ FOREIGN NATIONALS SUPPORTING U.S. MILITARY IN OVERSEAS AREAS UNDER
 CONTRACTS/AGREEMENTS WITH FOREIGN GOVERNMENTS.

TABLE 5

DEPARTMENT OF DEFENSE
TOTAL PAID CIVILIAN EMPLOYMENT BY LOCATION

APRIL 30, 1981

TYPE PERSONNEL	TOTAL DEPT OF DEFENSE	ARMY	NAVY	AIR FORCE	OTHER DEFENSE ACTIVITIES
<u>WORLDWIDE TOTAL</u>	<u>1,054,748</u>	<u>399,195</u>	<u>329,422</u>	<u>245,891</u>	<u>80,240</u>
<u>UNITED STATES (DIRECT HIRE)</u>	<u>899,073</u>	<u>314,060</u>	<u>297,115</u>	<u>219,977</u>	<u>67,921</u>
BY LOCATION:					
WASHINGTON, D.C.	79,773	25,413	34,724	6,157	13,479
REMAINDER OF U.S. A/ BY SALARIED & WAGE BOARD:	819,300	288,647	262,391	213,820	54,442
SALARIED	578,478	219,751	166,950	135,333	56,444
WAGE BOARD	320,595	94,309	130,165	84,644	11,477
<u>U.S. TERRITORIES (DIRECT HIRE)</u>	<u>6,390</u>	<u>1,085</u>	<u>4,363</u>	<u>899</u>	<u>43</u>
BY CITIZENSHIP:					
U.S. CITIZENS B/ FOREIGN NATIONALS	6,343 47	1,084 1	4,318 45	898 1	43 0
BY SALARIED & WAGE BOARD:					
SALARIED	2,928	725	1,785	385	33
WAGE BOARD	3,462	360	2,578	514	10
<u>FOREIGN COUNTRIES</u>	<u>149,285</u>	<u>84,050</u>	<u>27,944</u>	<u>25,015</u>	<u>12,276</u>
<u>DIRECT HIRE</u>	<u>74,375</u>	<u>34,819</u>	<u>17,213</u>	<u>11,792</u>	<u>10,551</u>
BY CITIZENSHIP:					
U.S. CITIZENS B/ FOREIGN NATIONALS	36,852 37,523	19,050 15,763	2,723 14,490	5,148 6,644	9,925 626
BY SALARIED & WAGE BOARD:					
SALARIED	43,159	14,771	7,269	10,722	10,397
WAGE BOARD	31,216	20,048	9,944	1,070	154
<u>INDIRECT HIRE (FOREIGN NATIONALS)</u>	<u>74,910</u>	<u>49,231</u>	<u>10,731</u>	<u>13,223</u>	<u>1,725</u>

A/ INCLUDES ALASKA AND HAWAII

B/ INCLUDES U.S. CITIZENS BY VIRTUE OF CITIZENSHIP IN A U.S. TERRITORY

TABLE 6

DEPARTMENT OF DEFENSE
INDIRECT HIRE PERSONNEL BY COUNTRY

APRIL 30, 1981

COUNTRY	TOTAL	ARMY	NAVY	AIR FORCE	OTHER DEFENSE ACTIVITIES
<u>TOTAL</u>	<u>74,910</u>	<u>49,231</u>	<u>10,731</u>	<u>13,223</u>	<u>1,725</u>
BELGIUM	460	446	-	-	14
GERMANY	49,289	41,997	30	6,015	1,247
GREECE	577	15	115	428	19
GUAM	4	-	4	-	-
ITALY	4	-	4	-	-
JAPAN (INCLUDES OKINAWA)	17,834	3,471	9,388	4,726	249
KOREA	3,053	3,053	-	-	-
NETHERLANDS	333	249	-	70	14
PHILIPPINES	7	-	6	-	1
SPAIN	2,037	-	1,117	838	82
UNITED KINGDOM	1,312	-	67	1,146	99

INDIRECT HIRE PERSONNEL ARE FOREIGN NATIONALS SUPPORTING U.S. MILITARY FORCES UNDER
CONTRACTS OR AGREEMENTS WITH FOREIGN GOVERNMENTS.

TABLE 7

DEPARTMENT OF DEFENSE
MONTHLY ACCESSIONS AND SEPARATIONS OF DIRECT HIRE CIVILIAN EMPLOYEES

DATE	ACCESSIONS		SEPARATIONS	
	NUMBER	RATE	NUMBER	RATE
1980				
JANUARY	15,754	1.63	19,744	2.05
FEBRUARY	12,841	1.33	12,958	1.34
MARCH	17,794	1.84	15,575	1.61
APRIL	15,226	1.57	12,488	1.29
MAY	18,584	1.91	13,311	1.37
JUNE	35,078	3.55	22,012	2.23
JULY	16,997	1.72	15,140	1.53
AUGUST	19,622	2.02	34,671	3.56
SEPTEMBER	25,301	2.64	38,376	4.00
OCTOBER	23,733	2.45	13,652	1.41
NOVEMBER	12,973	1.34	11,312	1.16
DECEMBER	12,508	1.29	10,351	1.06
1981				
JANUARY	18,714	1.92	19,917	2.05
FEBRUARY	7,734	0.80	9,983	1.03
MARCH	12,348	1.27	9,596	0.98
APRIL	14,992	1.53	9,681	0.99

TABLE 8
 DEPARTMENT OF DEFENSE
 MONTHLY SEPARATIONS OF DIRECT HIRE CIVILIAN EMPLOYEES BY CAUSE
 WORLDWIDE

DATE	TOTAL	QUIT	RIF	TERMINATION A/	OTHER B/
1980					
JANUARY	19,744	5,239	152	2,134	12,219
FEBRUARY	12,958	4,247	82	1,441	7,188
MARCH	15,575	4,642	101	1,862	8,970
APRIL	12,488	4,597	87	2,032	5,772
MAY	13,311	5,087	73	2,537	5,614
JUNE	22,012	5,864	121	2,739	13,288
JULY	15,140	6,165	151	2,707	6,117
AUGUST	34,671	15,070	144	7,226	12,231
SEPTEMBER	38,376	13,502	243	14,302	10,329
OCTOBER	13,652	4,812	117	3,967	4,756
NOVEMBER	11,312	3,952	65	2,470	4,825
DECEMBER	10,351	2,985	69	1,858	5,439
1981					
JANUARY	19,917	5,123	169	2,263	12,362
FEBRUARY	9,983	3,896	63	1,314	4,710
MARCH	9,596	3,460	38	1,708	4,390
APRIL	9,681	3,953	45	1,556	4,127

A/ TERMINATIONS OF TEMPORARY OR EXCEPTED APPOINTMENTS OR OF PERSONAL SERVICE CONTRACTS.

B/ INCLUDES TRANSFERS, DISCHARGES, DISPLACEMENTS, EXTENDED LWOP AND SUSPENSIONS, DEATHS, DISABILITIES AND RETIREMENTS.

ND