

AD-A151 130

CIVILIAN MANPOWER STATISTICS, MAY, FY-81. (U)
WASHINGTON HEADQUARTERS SERVICE (DOD) DIR FOR INFO
OP & RPTS. MAY 81. DIOR/MO4-81/08

1/1

UNCLASSIFIED

F/G 5/9

N/L

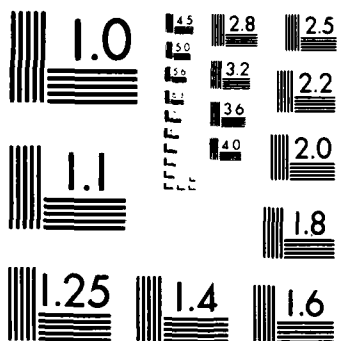
1 OF 1
AD-A151 130



END
FILMED
11 04 85

1 OF 1

AD-A151 130



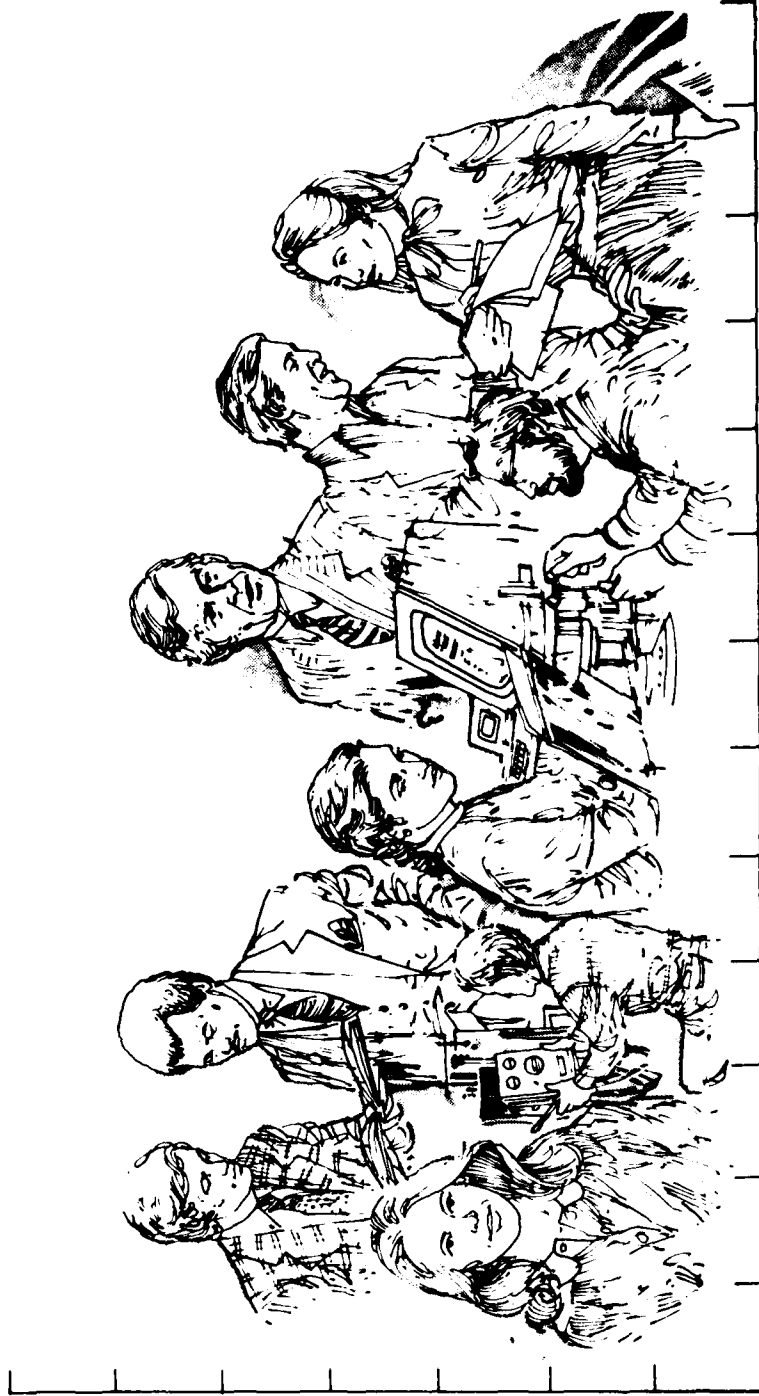
MICROCOPY RESOLUTION TEST CHART
NATIONAL BUREAU OF STANDARDS-1963-A

**THIS REPORT IS UNCLASSIFIED AND
ITS DISTRIBUTION IS UNLIMITED**



Department of Defense
CIVILIAN MANPOWER STATISTICS

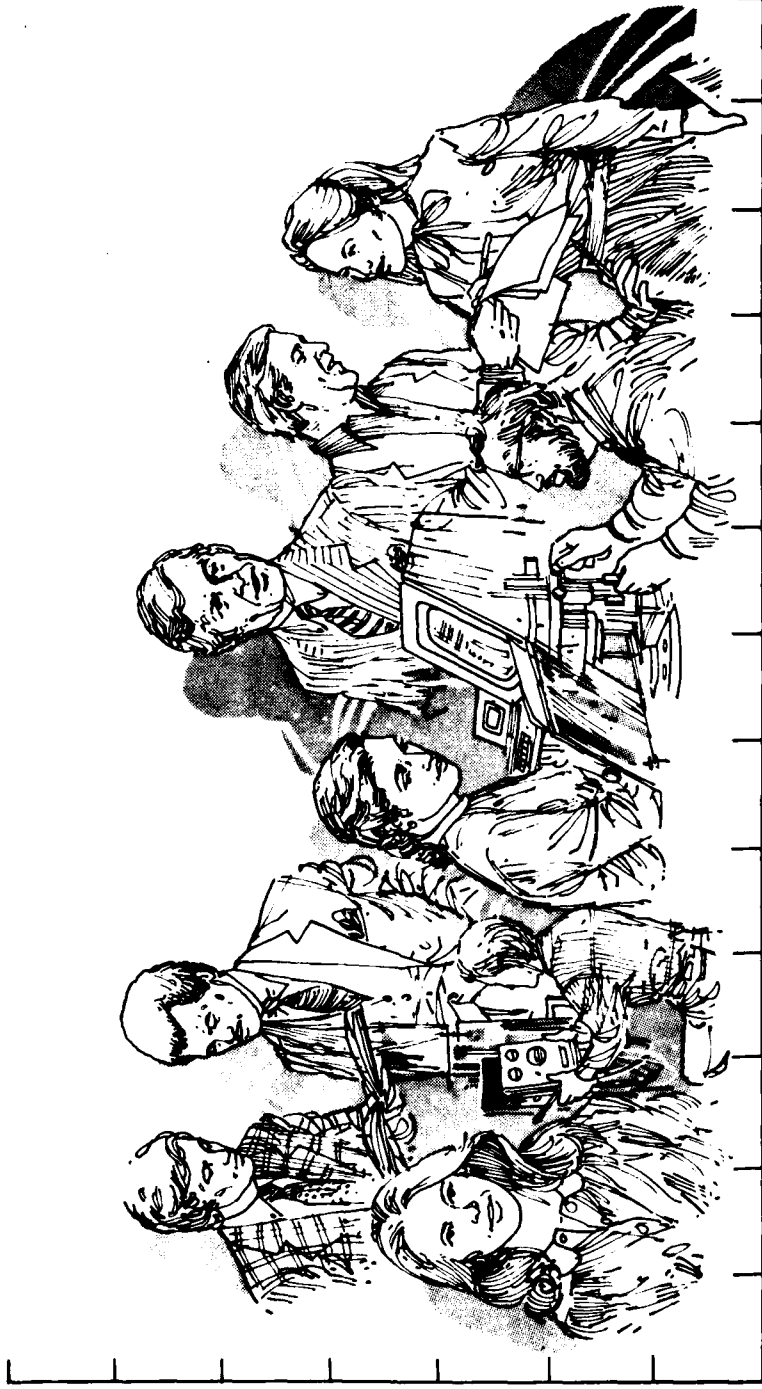
MAY 1981





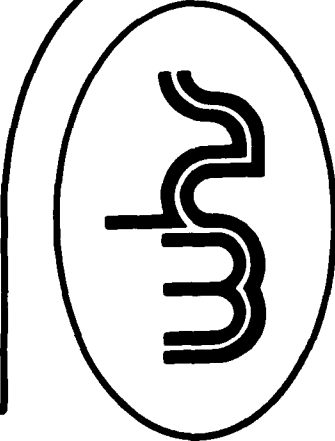
Department of Defense

CIVILIAN MANPOWER STATISTICS



OSD

MAN-POWER STATISTICS



DIRECTORATE FOR INFORMATION
OPERATIONS AND REPORTS (DIOR)
THE PENTAGON, WASHINGTON, D.C.

F O R E W O R D

CIVILIAN MANPOWER STATISTICS (CMS) is a monthly publication of Washington Headquarters Services, Directorate for Information Operations and Reports (WHS/DIOR) of the Office of the Secretary of Defense.

CMS provides audited, statistical information on the entire civilian workforce of the Department of Defense with the exception of personnel of the National Security Agency and personnel paid from non-appropriated funds. It is produced primarily from a computerized data base developed and maintained by WHS/DIOR from monthly information provided to the Office of Personnel Management on SF 113-A, Monthly Report of Federal Civilian Employment.

Questions on material in this publication and requests for additional copies or changes in distribution should be addressed to the Director, Washington Headquarters Services, Room 3E843, The Pentagon, Washington, D.C. 20301.

T A B L E O F C O N T E N T S

<u>Table Number</u>	<u>Former Designation</u>	<u>Title</u>	<u>PAGE</u>
		Glossary	1
Table 1	P10 (Rev.)	Department of Defense Civilian Employment Summary	2
Table 2	P30.11 (Rev.)	Department of Defense Trends in Civilian Employment Subject to OMB Ceiling	3
Table 3	P30.10	Department of Defense Direct Hire Civilian Employment Subject to OMB Ceiling	4
Table 4	P12.2	Department of Defense Civilian and Military Personnel--OSD-JCS and Other Defense Activities	5
Table 5	P31.0	Department of Defense Total Paid Civilian Employment by Category	6
Table 6	P32.0	Department of Defense Total Paid Civilian Employment by Location	7
Table 7	P32.6	Department of Defense Indirect Hire Personnel by Country	8
Table 8	P33.1	Department of Defense Monthly Accessions and Separations of Direct Hire Civilian Employees	9
Table 9	P33.2	Department of Defense Monthly Separations of Direct Hire Civilian Employees by Cause	10

G L O S S A R Y

Military Functions. Activities normally associated with the uniform services.

Civil Functions. Functions primarily associated with the Civil Works program of the Army Corps of Engineers. This program encompasses planning, programming, designing, constructing, and operating Federal water resource projects for navigation, flood control, hydroelectric power, water supply, recreation, and related activities. Civil Functions also includes cemeterial workers (Army) and several conservation management employees (Air Force).

Direct Hire Civilians. Employees hired directly by an agency of the Department of Defense. Included are foreign nationals hired by the Department of Defense to support DoD activities in their home countries.

Indirect Hire Civilians. Foreign nationals assigned to support U.S. forces through contracts or agreements with foreign governments (or agencies thereof). These personnel are employees of the foreign governments involved.

Total Paid Civilian Employment. Total direct and indirect hire civilian employment. For direct hire, includes, with some exceptions, all direct hire employees who had not officially separated as of the report date and who either worked during the reporting period or were on paid leave.

OMB Ceiling Employment. Employees subject to Office of Management and Budget (OMB) ceilings established to administer Presidential employment ceiling limitations. For direct hire employees, it excludes employees such as Summer Aids or in the Stay-in-School, Federal Junior Fellowship, and Worker-Trainee Opportunity Programs, and those who are covered by other official exemptions granted by OMB.

Agencies.

- OSD-JCS = Office of the Secretary of Defense and Office of the Joint Chiefs of Staff
- AFIS = Armed Forces Information Service
- CHAMPUS = Civilian Health and Medical Program of the Uniform Services
- DARPA = Defense Advanced Research Projects Agency
- DSAA = Defense Security Assistance Agency
- TRIMIS = Tri-Service Medical Information System
- USCMA = U.S. Court of Military Appeals
- OEA = Office of Economic Adjustment
- WHS = Washington Headquarters Services

TABLE 1
DEPARTMENT OF DEFENSE
CIVILIAN EMPLOYMENT SUMMARY

MAY 31, 1981

CIVILIAN EMPLOYMENT A/ MILITARY FUNCTIONS	TOTAL DOD	ARMY	B/ NAVY	AIR FORCE	OTHER DEFENSE AGENCIES C/
OMB CEILING EMPLOYMENT	1,017,762	365,356	326,949	245,412	80,045
DIRECT HIRE	942,661	316,054	316,192	232,110	78,305
INDIRECT HIRE	75,101	49,302	10,757	13,302	1,740
TOTAL EMPLOYMENT	1,029,664	368,833	331,690	247,907	81,234
DIRECT HIRE	954,563	319,531	320,933	234,605	79,494
INDIRECT HIRE	75,101	49,302	10,757	13,302	1,740
<u>CIVIL FUNCTIONS (ALL DIRECT HIRE)</u>					
OMB CEILING EMPLOYMENT	34,040	34,037	0	3	0
TOTAL EMPLOYMENT	35,242	35,239	0	3	0
<u>TOTAL MILITARY AND CIVIL FUNCTIONS</u>					
OMB CEILING EMPLOYMENT	1,051,802	399,393	326,949	245,415	80,045
DIRECT HIRE	976,701	350,091	316,192	232,113	78,305
INDIRECT HIRE	75,101	49,302	10,757	13,302	1,740
TOTAL EMPLOYMENT	1,064,906	404,072	331,690	247,910	81,234
DIRECT HIRE	989,805	354,770	320,933	234,608	79,494
INDIRECT HIRE	75,101	49,302	10,757	13,302	1,740

A/ INCLUDED IN TOTAL EMPLOYMENT AND EXCLUDED FROM OMB CEILING EMPLOYMENT ARE EMPLOYEES EXEMPT FROM OFFICE AND MANAGEMENT AND BUDGET (OMB) CEILING CONTROL, I.E. SUMMER AIDS AND EMPLOYEES IN THE STAY-IN-SCHOOL, FEDERAL JUNIOR FELLOWSHIP, AND WORKER-TRAINEE OPPORTUNITY PROGRAMS, AND THOSE COVERED BY OTHER OFFICIAL EXEMPTIONS GRANTED BY OMB.

B/ INCLUDES MARINE CORPS CIVILIAN PERSONNEL.
C/ INCLUDES OSD, JCS, AFIS, CHAMPUS, DARPA, TRIMIS, USCMA, OEA, WHS, AND THE DEFENSE AGENCIES (LISTED IN TABLE 3).

TABLE 2

DEPARTMENT OF DEFENSE
TRENDS IN CIVILIAN EMPLOYMENT
SUBJECT TO OMB CEILING

DEPARTMENT AND FUNCTION	SEP 30, 77	SEP 30, 78	SEP 30, 79	SEP 30, 80	APR 30, 81	MAY 31, 81
<u>MILITARY FUNCTIONS</u>	<u>1,022,416</u>	<u>1,016,751</u>	<u>991,081</u>	<u>990,356</u>	<u>1,008,635</u>	<u>1,017,762</u>
DIRECT HIRE A/	939,021	935,703	915,764	915,786	933,725	942,661
INDIRECT HIRE B/	83,395	81,048	75,317	74,570	74,910	75,101
ARMY	371,565	371,369	359,121	360,508	361,298	365,356
DIRECT HIRE	315,037	316,078	309,475	311,795	312,067	316,054
INDIRECT HIRE	56,528	55,291	49,646	48,713	49,231	49,302
NAVY	317,612	316,796	310,176	308,715	324,747	326,949
DIRECT HIRE	306,668	306,420	299,449	297,984	314,016	316,192
INDIRECT HIRE	10,944	10,376	10,727	10,731	10,731	10,757
AIR FORCE	255,321	251,091	245,082	244,342	243,438	245,412
DIRECT HIRE	240,819	237,024	231,838	230,938	230,215	232,110
INDIRECT HIRE	14,502	14,067	13,244	13,404	13,223	13,302
OTHER DEFENSE ACTIVITIES	77,918	77,495	76,702	76,791	79,152	80,045
DIRECT HIRE	76,497	76,181	75,002	75,069	77,427	78,305
INDIRECT HIRE	1,421	1,314	1,700	1,722	1,725	1,740
<u>CIVIL FUNCTIONS (ALL DIRECT HIRE) A/</u>	<u>33,386</u>	<u>33,590</u>	<u>33,342</u>	<u>32,611</u>	<u>33,066</u>	<u>34,040</u>
ARMY	33,381	33,586	33,336	32,608	33,063	34,037
AIR FORCE	5	4	6	3	3	3
<u>TOTAL MILITARY AND CIVIL FUNCTIONS</u>	<u>1,055,802</u>	<u>1,050,341</u>	<u>1,024,423</u>	<u>1,022,967</u>	<u>1,041,701</u>	<u>1,051,802</u>
DIRECT HIRE A/	972,407	969,293	949,106	948,397	966,791	976,701
INDIRECT HIRE B/	83,395	81,048	75,317	74,570	74,910	75,101

A/ AS REPORTED OFFICIALLY TO THE OFFICE OF PERSONNEL MANAGEMENT ON LINE 29 OF SF 113-A. EXCLUDES EMPLOYEES EXEMPT FROM THE PRESIDENT'S CEILING CONTROL.

B/ FOREIGN NATIONALS SUPPORTING U.S. MILITARY FORCES OVERSEAS UNDER CONTRACTS OR AGREEMENTS WITH FOREIGN GOVERNMENTS. ALL INDIRECT HIRES SUPPORT MILITARY FUNCTIONS.

TABLE 3

DEPARTMENT OF DEFENSE
DIRECT HIRE CIVILIAN EMPLOYMENT
SUBJECT TO OMB CEILING A/

COMPONENT	TOTAL EMPLOYMENT				FULL-TIME IN PERMANENT POSITIONS			
	APR 30, 81	MAY 31, 81	SEP 30, 81 B/	SEP 30, 81 B/	APR 30, 81	MAY 31, 81	SEP 30, 81 B/	SEP 30, 81 B/
<u>MILITARY FUNCTIONS</u>	<u>933,725</u>	<u>942,661</u>	<u>930,000</u>	<u>879,160</u>	<u>883,168</u>	<u>879,000</u>		
ARMY	312,067	316,054	312,742	287,232	289,230	285,855		
NAVY	314,016	316,192	306,671	297,000	297,899	296,117		
AIR FORCE	230,215	232,110	230,578	221,961	222,340	219,142		
OSD & RELATED ACTIVITIES C/	2,448	2,493	2,599	2,214	2,208	2,416		
DEFENSE AUDIOVISUAL AGENCY	461	457	543	452	450	543		
DEFENSE AUDIT SERVICE	373	375	403	371	372	401		
DEFENSE COMMUNICATIONS AGENCY	1,584	1,613	1,631	1,555	1,577	1,608		
DEFENSE CONTRACT AUDIT AGENCY	3,436	3,521	3,514	3,405	3,476	3,452		
DEFENSE INTELLIGENCE AGENCY	2,587	2,588	2,571	2,563	2,554	2,566		
DEFENSE INVESTIGATIVE SERVICE	2,298	2,346	2,657	2,294	2,341	2,654		
DEFENSE LOGISTICS AGENCY	45,052	45,587	46,661	43,792	44,349	45,961		
DEFENSE MAPPING AGENCY	8,322	8,359	8,175	8,155	8,173	8,115		
DEFENSE NUCLEAR AGENCY	599	617	638	588	589	638		
DEPARTMENT OF DEFENSE DEPENDENT'S SCHOOLS	9,701	9,775	9,962	7,067	7,095	8,917		
UNIFORM SERVICES UNIVERSITY OF THE HEALTH SCIENCES	566	574	655	511	515	615		
<u>CIVIL FUNCTIONS</u>	<u>33,066</u>	<u>34,040</u>	<u>N/A</u>	<u>27,799</u>	<u>27,749</u>	<u>N/A</u>		
ARMY	33,063	34,037		27,796	27,746			
AIR FORCE	3	3		3	3			
<u>TOTAL MILITARY & CIVIL FUNCTIONS</u>	<u>966,791</u>	<u>976,701</u>	<u>N/A</u>	<u>906,959</u>	<u>910,917</u>	<u>N/A</u>		

A/ AS REPORTED OFFICIALLY TO THE OFFICE OF PERSONNEL MANAGEMENT ON LINE 29 OF SF 113-A.

B/ PRESIDENT'S FY81 BUDGET PLAN (REVISED).

C/ INCLUDES OSD-JCS, AFIS, CHAMPUS, DARPA, DSAA, TRIMIS, USCSMA, OEA, AND WHS.

TABLE 4

DEPARTMENT OF DEFENSE
CIVILIAN AND MILITARY PERSONNEL
OSD-JCS AND OTHER DEFENSE ACTIVITIES

MAY 31, 1981

COMPONENT	TOTAL	A/ CIVILIAN	TOTAL	MILITARY OFFICER	
				ENLISTED	
<u>TOTALS</u>	86,656	79,494	7,162	4,200	2,962
OSD & RELATED ACTIVITIES <u>B/</u>	4,203	2,505	1,698	1,186	512
DEFENSE AUDIOVISUAL AGENCY	581	459	122	16	106
DEFENSE AUDIT SERVICE	377	377	-	-	-
DEFENSE COMMUNICATIONS AGENCY	3,112	1,659	1,453	458	995
DEFENSE CONTRACT AUDIT AGENCY	3,550	3,550	-	-	-
DEFENSE INTELLIGENCE AGENCY	4,356	2,588	1,768	1,136	632
DEFENSE INVESTIGATIVE SERVICE	2,524	2,364	160	83	77
DEFENSE LOGISTICS AGENCY	47,518	46,566	952	792	160
DEFENSE MAPPING AGENCY	8,883	8,440	443	185	258
DEFENSE NUCLEAR AGENCY	1,116	636	480	296	184
DEPARTMENT OF DEFENSE DEPENDENTS SCHOOLS	9,776	9,776	-	-	-
UNIFORMED SERVICES UNIVERSITY OF THE HEALTH SCIENCES	660	574	86	48	38

A/ INCLUDES TOTAL PAID DIRECT HIRE CIVILIAN EMPLOYMENT AS REPORTED ON LINE 1 OF SF 113-A.
B/ INCLUDES OSD-JCS, AFIS, CHAMPUS, DARPA, DSA, TRIMIS, USCMA, OEA, AND WHS.

TABLE 5

DEPARTMENT OF DEFENSE
TOTAL PAID CIVILIAN EMPLOYMENT BY CATEGORY

MAY 31, 1981

TYPE PERSONNEL	TOTAL DEPT OF DEFENSE	ARMY	NAVY	AIR FORCE	OTHER DEFENSE ACTIVITIES
<u>WORLDWIDE TOTAL</u>	<u>1,064,906</u>	<u>404,072</u>	<u>331,690</u>	<u>247,910</u>	<u>81,234</u>
<u>DIRECT HIRE A/</u>	<u>989,805</u>	<u>354,770</u>	<u>320,933</u>	<u>234,608</u>	<u>79,494</u>
BY FULL-TIME & PART-TIME:					
FULL-TIME	964,286	344,051	314,079	229,672	76,484
PART-TIME & INTERMITTENT	25,519	10,719	6,854	4,936	3,010
BY CITIZENSHIP:					
U.S. CITIZENS B/ FOREIGN NATIONALS	951,728 38,077	338,683 16,087	306,331 14,602	227,874 6,734	78,840 654
BY SALARIED & WAGE BOARD:					
SALARIED	632,155	238,656	177,593	148,151	67,755
WAGE BOARD	357,650	116,114	143,340	86,457	11,739
<u>INDIRECT HIRE C/</u>	<u>75,101</u>	<u>49,302</u>	<u>10,757</u>	<u>13,302</u>	<u>1,740</u>
<u>TOTAL U.S. CITIZENS</u>	<u>951,728</u>	<u>338,683</u>	<u>306,331</u>	<u>227,874</u>	<u>78,840</u>
<u>TOTAL FOREIGN NATIONALS</u>	<u>113,178</u>	<u>65,389</u>	<u>25,359</u>	<u>20,036</u>	<u>2,394</u>

A/ AS REPORTED TO THE OFFICE OF PERSONNEL MANAGEMENT ON LINE 1 OF SF 113-A.

B/ INCLUDES U.S. CITIZENS BY VIRTUE OF CITIZENSHIP IN A U.S. TERRITORY.

C/ FOREIGN NATIONALS SUPPORTING U.S. MILITARY IN OVERSEAS AREAS UNDER CONTRACTS/AGREEMENTS WITH FOREIGN GOVERNMENTS.

TABLE 6

DEPARTMENT OF DEFENSE
TOTAL PAID CIVILIAN EMPLOYMENT BY LOCATION

MAY 31, 1981

TYPE PERSONNEL	TOTAL DEPT OF DEFENSE	ARMY	NAVY	AIR FORCE	OTHER DEFENSE ACTIVITIES
<u>WORLDWIDE TOTAL</u>	<u>1,064,906</u>	<u>404,072</u>	<u>331,690</u>	<u>247,910</u>	<u>81,234</u>
<u>UNITED STATES (DIRECT HIRE)</u>	<u>908,932</u>	<u>318,820</u>	<u>299,339</u>	<u>221,933</u>	<u>68,840</u>
BY LOCATION:					
WASHINGTON, D.C.	80,692	25,770	35,078	6,182	13,662
REMAINDER OF U.S. A/	828,240	293,050	264,261	215,751	55,178
BY SALARIED & WAGE BOARD:					
SALARIED	585,955	223,088	168,572	137,026	57,269
WAGE BOARD	322,977	95,732	130,767	84,907	11,571
<u>U.S. TERRITORIES (DIRECT HIRE)</u>	<u>6,340</u>	<u>1,096</u>	<u>4,299</u>	<u>901</u>	<u>44</u>
BY CITIZENSHIP:					
U.S. CITIZENS B/	6,297	1,095	4,258	900	44
FOREIGN NATIONALS	43	1	41	1	0
BY SALARIED & WAGE BOARD:					
SALARIED	2,887	733	1,733	388	33
WAGE BOARD	3,453	363	2,566	513	11
<u>FOREIGN COUNTRIES</u>	<u>149,634</u>	<u>84,156</u>	<u>28,052</u>	<u>25,076</u>	<u>12,350</u>
<u>DIRECT HIRE</u>	<u>74,533</u>	<u>34,854</u>	<u>17,295</u>	<u>11,774</u>	<u>10,610</u>
BY CITIZENSHIP:					
U.S. CITIZENS B/	36,902	19,101	2,734	5,085	9,982
FOREIGN NATIONALS	37,631	15,753	14,561	6,689	628
BY SALARIED & WAGE BOARD:					
SALARIED	43,313	14,835	7,288	10,737	10,453
WAGE BOARD	31,220	20,019	10,007	1,037	157
<u>INDIRECT HIRE (FOREIGN NATIONALS)</u>	<u>75,101</u>	<u>49,302</u>	<u>10,757</u>	<u>13,302</u>	<u>1,740</u>

A/ INCLUDES ALASKA AND HAWAII

B/ INCLUDES U.S. CITIZENS BY VIRTUE OF CITIZENSHIP IN A U.S. TERRITORY

TABLE 7
 DEPARTMENT OF DEFENSE
 INDIRECT HIRE PERSONNEL BY COUNTRY

MAY 31, 1981

COUNTRY	TOTAL	ARMY	NAVY	AIR FORCE	OTHER DEFENSE ACTIVITIES
<u>TOTAL</u>	<u>75,101</u>	<u>49,502</u>	<u>10,757</u>	<u>13,302</u>	<u>1,740</u>
BELGIUM	455	441	-	-	14
GERMANY	49,328	42,038	30	6,011	1,249
GREECE	578	15	115	429	19
GUAM	4	-	4	-	-
JAPAN (INCLUDES OKINAWA)	17,993	3,510	9,418	4,806	259
KOREA	3,044	3,044	-	-	-
NETHERLANDS	338	254	-	70	14
PHILIPPINES	7	-	6	-	1
SPAIN	2,041	-	1,116	843	82
UNITED KINGDOM	1,313	-	68	1,143	102

INDIRECT HIRE PERSONNEL ARE FOREIGN NATIONALS SUPPORTING U.S. MILITARY FORCES UNDER CONTRACTS OR AGREEMENTS WITH FOREIGN GOVERNMENTS.

TABLE 8

DEPARTMENT OF DEFENSE
MONTHLY ACCESSIONS AND SEPARATIONS OF DIRECT HIRE CIVILIAN EMPLOYEES

DATE	ACCESSIONS		SEPARATIONS	
	NUMBER	RATE	NUMBER	RATE
1980				
JANUARY	15,754	1.63	19,744	2.05
FEBRUARY	12,841	1.33	12,958	1.34
MARCH	17,794	1.84	15,575	1.61
APRIL	15,226	1.57	12,488	1.29
MAY	18,584	1.91	13,311	1.37
JUNE	35,078	3.55	22,012	2.23
JULY	16,997	1.72	15,140	1.53
AUGUST	19,622	2.02	34,671	3.56
SEPTEMBER	25,301	2.64	38,376	4.00
OCTOBER	23,733	2.45	13,652	1.41
NOVEMBER	12,973	1.34	11,312	1.16
DECEMBER	12,508	1.29	10,351	1.06
1981				
JANUARY	18,714	1.92	19,917	2.05
FEBRUARY	7,734	0.80	9,983	1.03
MARCH	12,348	1.27	9,596	0.98
APRIL	14,992	1.53	9,681	0.99
MAY	21,570	2.18	11,490	1.16

TABLE 9
 DEPARTMENT OF DEFENSE
 MONTHLY SEPARATIONS OF DIRECT HIRE CIVILIAN EMPLOYEES BY CAUSE
 WORLDWIDE

DATE	TOTAL	QUIT	RIF	TERMINATION A/	OTHER B/
1980					
JANUARY	19,744	5,239	152	2,134	12,219
FEBRUARY	12,958	4,247	82	1,441	7,188
MARCH	15,575	4,642	101	1,862	8,970
APRIL	12,488	4,597	87	2,032	5,772
MAY	13,311	5,087	73	2,537	5,614
JUNE	22,012	5,864	121	2,739	13,288
JULY	15,140	6,165	151	2,707	6,117
AUGUST	34,671	15,070	144	7,226	12,231
SEPTEMBER	38,376	13,502	243	14,302	10,329
OCTOBER	13,652	4,812	117	3,967	4,756
NOVEMBER	11,312	3,952	65	2,470	4,825
DECEMBER	10,351	2,985	69	1,858	5,439
1981					
JANUARY	19,917	5,123	169	2,263	12,362
FEBRUARY	9,983	3,896	63	1,314	4,710
MARCH	9,596	3,460	38	1,708	4,390
APRIL	9,681	3,953	45	1,556	4,127
MAY	11,490	4,965	95	1,432	4,998

A/ TERMINATIONS OF TEMPORARY OR EXCEPTED APPOINTMENTS OR OF PERSONAL SERVICE CONTRACTS.
 B/ INCLUDES TRANSFERS, DISCHARGES, DISPLACEMENTS, EXTENDED LWOP AND SUSPENSIONS, DEATHS, DISABILITIES
 AND RETIREMENTS.

