

AD-A151 132

CIVILIAN MANPOWER STATISTICS, AUGUST, FY-81. (U)  
WASHINGTON HEADQUARTERS SERVICE (DOD) DIR FOR INFO  
OP & RPTS. AUG 81. DIOR/MO4-81/11

1/A

UNCLASSIFIED

F/G 5/9

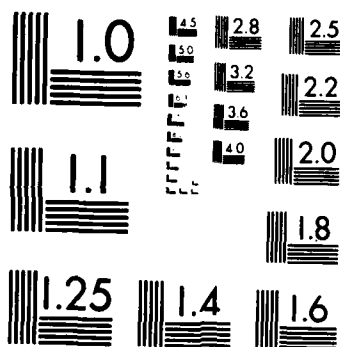
N/L

1 OF 1  
AD-A151 132

END  
FILMED  
11 04 85

# 1 OF 1

# AD-A151 132



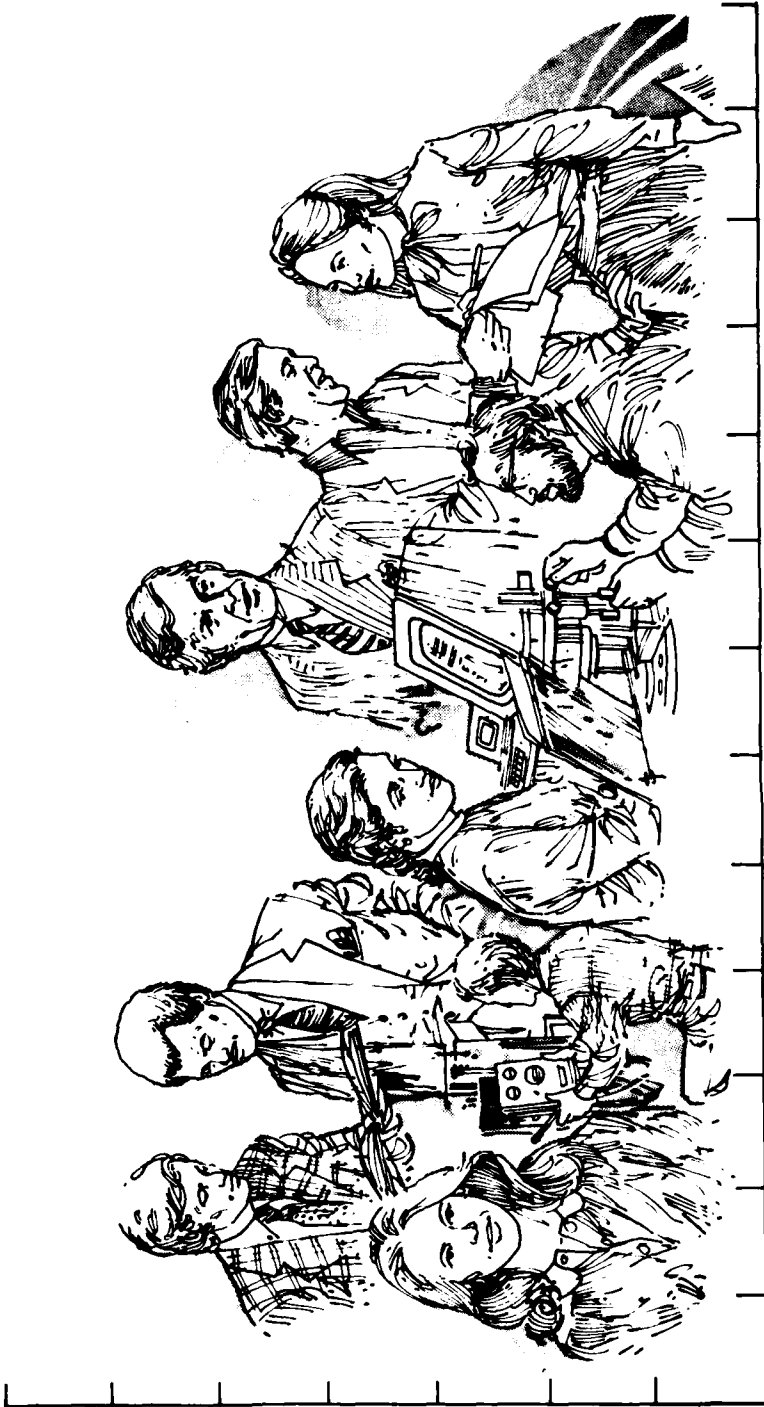
MICROCOPY RESOLUTION TEST CHART  
NATIONAL BUREAU OF STANDARDS 1963-A

**THIS REPORT IS UNCLASSIFIED AND  
ITS DISTRIBUTION IS UNLIMITED**



Department of Defense  
**CIVILIAN MANPOWER STATISTICS**

**AUGUST 1981**



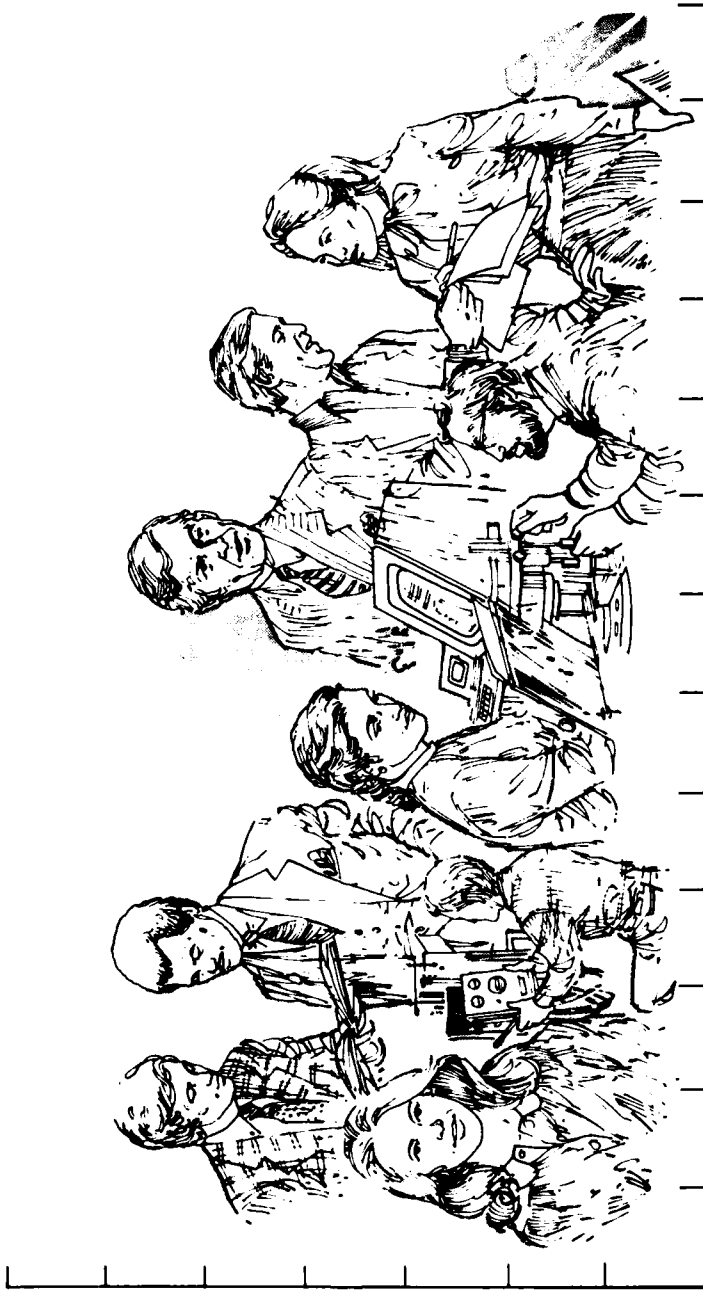


Department of Defense

# CIVILIAN MANPOWER STATISTICS

OSD

WASHINGTON HEADQUARTERS SERVICES



DIRECTORATE FOR INFORMATION  
OPERATIONS AND REPORTS (DIOR)  
THE PENTAGON, WASHINGTON, D.C.

F O R E W O R D

CIVILIAN MANPOWER STATISTICS (CMS) is a monthly publication of Washington Headquarters Services, Directorate for Information Operations and Reports (WHS/DIOR) of the Office of the Secretary of Defense.

CMS provides audited, statistical information on the entire civilian workforce of the Department of Defense with the exception of personnel of the National Security Agency and personnel paid from non-appropriated funds. It is produced primarily from a computerized data base developed and maintained by WHS/DIOR from monthly information provided to the Office of Personnel Management on SF 113-A, Monthly Report of Federal Civilian Employment.

Questions on material in this publication and requests for additional copies or changes in distribution should be addressed to the Director, Washington Headquarters Services, Room 3E843, The Pentagon, Washington, D.C. 20301.

T A B L E O F C O N T E N T S

<u>Table Number</u>	<u>Former Designation</u>	<u>Title</u>	<u>PAGE</u>
		Glossary	1
Table 1	P10 (Rev.)	Department of Defense - Civilian Employment Summary	2
Table 2	P30.11 (Rev.)	Department of Defense - Trends in Civilian Employment Subject to OMB Ceiling	3
Table 3	P30.10	Department of Defense - Direct Hire Civilian Employment Subject to OMB Ceiling	4
Table 4	P12.2	Department of Defense - Civilian and Military Personnel--OSD-JCS and Other Defense Activities	5
Table 5	P31.0	Department of Defense - Total Paid Civilian Employment by Category	6
Table 6	P32.0	Department of Defense - Total Paid Civilian Employment by Location	7
Table 7	P32.6	Department of Defense - Indirect Hire Personnel by Country	8
Table 8	P33.1	Department of Defense - Monthly Accessions and Separations of Direct Hire Civilian Employees	9
Table 9	P33.2	Department of Defense - Monthly Separations of Direct Hire Civilian Employees by Cause	10

G L O S S A R Y

Military Functions. Activities normally associated with the uniform services.

Civil Functions. Functions primarily associated with the Civil Works program of the Army Corps of Engineers. This program encompasses planning, programming, designing, constructing, and operating Federal water resource projects for navigation, flood control, hydroelectric power, water supply, recreation, and related activities. Civil Functions also includes cemeterial workers (Army) and several conservation management employees (Air Force).

Direct Hire Civilians. Employees hired directly by an agency of the Department of Defense. Included are foreign nationals hired by the Department of Defense to support DoD activities in their home countries.

Indirect Hire Civilians. Foreign nationals assigned to support U.S. forces through contracts or agreements with foreign governments (or agencies thereof). These personnel are employees of the foreign governments involved.

Total Paid Civilian Employment. Total direct and indirect hire civilian employment. For direct hire, includes, with some exceptions, all direct hire employees who had not officially separated as of the report date and who either worked during the reporting period or were on paid leave.

OMB Ceiling Employment. Employees subject to Office of Management and Budget (OMB) ceilings established to administer Presidential employment ceiling limitations. For direct hire employees, it excludes employees such as Summer Aids or in the Stay-in-School, Federal Junior Fellowship, and Worker-Trainee Opportunity Programs, and those who are covered by other official exemptions granted by OMB.

Agencies.

OSD-JCS = Office of the Secretary of Defense and Office of the Joint Chiefs of Staff  
AFIS = Armed Forces Information Service  
CHAMPUS = Civilian Health and Medical Program of the Uniform Services  
DARPA = Defense Advanced Research Projects Agency  
DSAA = Defense Security Assistance Agency  
TRIMIS = Tri-Service Medical Information System  
USCMA = U.S. Court of Military Appeals  
OEA = Office of Economic Adjustment  
WHS = Washington Headquarters Services

TABLE 1  
DEPARTMENT OF DEFENSE  
CIVILIAN EMPLOYMENT SUMMARY

AUGUST 31, 1981

CIVILIAN EMPLOYMENT A/ MILITARY FUNCTIONS	TOTAL DOD	ARMY	B/ NAVY	AIR FORCE	OTHER DEFENSE AGENCIES C/
OMB CEILING EMPLOYMENT	1,042,880	380,593	332,195	249,864	80,228
DIRECT HIRE	964,773	328,213	321,450	236,608	78,502
INDIRECT HIRE	78,107	52,380	10,745	13,256	1,726
TOTAL EMPLOYMENT	1,058,531	385,465	338,471	252,738	81,857
DIRECT HIRE	980,424	333,085	327,726	239,482	80,131
INDIRECT HIRE	78,107	52,380	10,745	13,256	1,726
<u>CIVIL FUNCTIONS (ALL DIRECT HIRE)</u>					
OMB CEILING EMPLOYMENT	34,408	34,404	0	4	0
TOTAL EMPLOYMENT	36,098	36,094	0	4	0
<u>TOTAL MILITARY AND CIVIL FUNCTIONS</u>					
OMB CEILING EMPLOYMENT	1,077,288	414,997	332,195	249,868	80,228
DIRECT HIRE	999,181	362,617	321,450	236,612	78,502
INDIRECT HIRE	78,107	52,380	10,745	13,256	1,726
TOTAL EMPLOYMENT	1,094,629	421,559	338,471	252,742	81,857
DIRECT HIRE	1,016,522	369,179	327,726	239,486	80,131
INDIRECT HIRE	78,107	52,380	10,745	13,256	1,726

A/ INCLUDED IN TOTAL EMPLOYMENT AND EXCLUDED FROM OMB CEILING EMPLOYMENT ARE EMPLOYEES EXEMPT FROM OFFICE OF MANAGEMENT AND BUDGET (OMB) CEILING CONTROL, I.E. SUMMER AIDS AND EMPLOYEES IN THE STAY-IN-SCHOOL, FEDERAL JUNIOR FELLOWSHIP, AND WORKER-TRAINEE OPPORTUNITY PROGRAMS, AND THOSE COVERED BY OTHER OFFICIAL EXEMPTIONS GRANTED BY OMB.

B/ INCLUDES MARINE CORPS CIVILIAN PERSONNEL.

C/ INCLUDES OSD, JCS, AFIS, CHAMPUS, DARPA, TRIMITS, USCMA, OEA, WHS, AND THE DEFENSE AGENCIES (LISTED IN TABLE 3).

TABLE 2

DEPARTMENT OF DEFENSE  
TRENDS IN CIVILIAN EMPLOYMENT  
SUBJECT TO OMB CEILING

DEPARTMENT AND FUNCTION	SEP 30, 77	SEP 30, 78	SEP 30, 79	SEP 30, 80	JUL 31, 81	AUG 31, 81
<u>MILITARY FUNCTIONS</u>	<u>1,022,416</u>	<u>1,016,751</u>	<u>991,681</u>	<u>990,356</u>	<u>1,041,991</u>	<u>1,042,880</u>
DIRECT HIRE A/	939,021	935,703	915,764	915,786	965,233	964,773
INDIRECT HIRE B/	83,395	81,048	75,317	74,570	76,758	78,107
ARMY						
DIRECT HIRE	371,565	371,369	359,121	360,508	381,780	380,593
INDIRECT HIRE	315,037	316,078	309,475	311,795	330,706	328,213
	56,528	55,291	49,646	48,713	51,074	52,380
NAVY						
DIRECT HIRE	317,612	316,796	310,176	308,715	333,200	332,195
INDIRECT HIRE	306,668	306,420	299,449	297,984	322,517	321,450
	10,944	10,376	10,727	10,731	10,683	10,745
AIR FORCE						
DIRECT HIRE	255,321	251,091	245,082	244,342	253,652	249,864
INDIRECT HIRE	240,819	237,024	231,838	230,938	240,379	236,608
	14,502	14,067	13,244	13,404	13,273	13,256
OTHER DEFENSE ACTIVITIES						
DIRECT HIRE	77,918	77,495	76,702	76,791	73,359	80,228
INDIRECT HIRE	76,497	76,181	75,002	75,069	71,631	78,502
	1,421	1,314	1,700	1,722	1,728	1,726
<u>CIVIL FUNCTIONS (ALL DIRECT HIRE) A/</u>	<u>33,386</u>	<u>33,590</u>	<u>33,342</u>	<u>32,611</u>	<u>35,837</u>	<u>34,408</u>
ARMY						
AIR FORCE	33,381	33,586	33,336	32,608	35,834	34,404
	5	4	6	3	3	4
<u>TOTAL MILITARY AND CIVIL FUNCTIONS</u>	<u>1,055,802</u>	<u>1,050,341</u>	<u>1,024,423</u>	<u>1,022,967</u>	<u>1,077,828</u>	<u>1,077,288</u>
DIRECT HIRE A/	972,407	969,293	949,106	948,397	1,001,070	999,181
INDIRECT HIRE B/	83,395	81,048	75,317	74,570	76,758	78,107

A/ AS REPORTED OFFICIALLY TO THE OFFICE OF PERSONNEL MANAGEMENT ON LINE 29 OF SF 113-A. EXCLUDES EMPLOYEES EXEMPT FROM THE PRESIDENT'S CEILING CONTROL.

B/ FOREIGN NATIONALS SUPPORTING U.S. MILITARY FORCES OVERSEAS UNDER CONTRACTS OR AGREEMENTS WITH FOREIGN GOVERNMENTS. ALL INDIRECT HIRES SUPPORT MILITARY FUNCTIONS.

TABLE 3

DEPARTMENT OF DEFENSE  
DIRECT HIRE CIVILIAN EMPLOYMENT  
SUBJECT TO OMB CEILING A/

COMPONENT	TOTAL EMPLOYMENT			FULL-TIME IN PERMANENT POSITIONS		
	JUL 31, 81	AUG 31, 81	SEP 30, 81 B/	JUL 31, 81	AUG 31, 81	SEP 30, 81 B/
<b>MILITARY FUNCTIONS</b>	<b>965,233</b>	<b>964,773</b>	<b>933,755</b>	<b>888,977</b>	<b>892,040</b>	<b>882,768</b>
ARMY	330,706	328,213	313,552	294,604	293,731	288,610
NAVY	322,517	321,450	309,407	300,391	299,752	297,936
AIR FORCE	240,379	236,608	231,800	225,203	223,976	222,222
OSD & RELATED ACTIVITIES C/	2,549	2,489	2,540	2,223	2,226	2,335
DEFENSE AUDIOVISUAL AGENCY	454	476	543	443	458	468
DEFENSE AUDIT SERVICE	385	386	403	382	382	391
DEFENSE COMMUNICATIONS AGENCY	1,659	1,648	1,638	1,585	1,580	1,600
DEFENSE CONTRACT AUDIT AGENCY	3,523	3,526	3,514	3,488	3,495	3,452
DEFENSE INTELLIGENCE AGENCY	2,626	2,630	2,571	2,601	2,602	2,566
DEFENSE INVESTIGATIVE SERVICE	2,426	2,428	2,657	2,419	2,420	2,419
DEFENSE LOGISTICS AGENCY	46,393	46,311	46,661	45,161	45,079	44,461
DEFENSE MAPPING AGENCY	8,423	8,375	8,175	8,182	8,187	8,115
DEFENSE NUCLEAR AGENCY	620	622	638	573	583	623
DEPARTMENT OF DEFENSE	1,971	9,001	9,001	1,193	7,030	7,030
DEPENDENTS SCHOOLS						
UNIFORM SERVICES UNIVERSITY	602	610	655	529	539	540
OF THE HEALTH SCIENCES						
<b>CIVIL FUNCTIONS</b>	<b>35,837</b>	<b>34,408</b>	<b>N/A</b>	<b>27,634</b>	<b>27,474</b>	<b>N/A</b>
ARMY	35,834	34,404		27,631	27,470	
AIR FORCE	3	4		3	4	
<b>TOTAL MILITARY AND CIVIL FUNCTIONS</b>	<b>1,001,070</b>	<b>999,181</b>	<b>N/A</b>	<b>912,611</b>	<b>919,514</b>	<b>N/A</b>

A/ AS REPORTED OFFICIALLY TO THE OFFICE OF PERSONNEL MANAGEMENT ON LINE 29 OF SF 113-A.

B/ FY81 BUDGET PLAN (REVISED JULY 17, 1981).

C/ INCLUDES OSD-JCS, AFIS, CHAMPUS, DARPA, DSAA, TRIMIS, USCSMA, OEA, AND WHS.

TABLE 4

DEPARTMENT OF DEFENSE  
CIVILIAN AND MILITARY PERSONNEL  
OSD-JCS AND OTHER DEFENSE ACTIVITIES

AUGUST 31, 1981

COMPONENT	TOTAL	A/ CIVILIAN	TOTAL	MILITARY	
				OFFICER	ENLISTED
<u>TOTALS</u>	<u>87,341</u>	<u>80,131</u>	<u>7,210</u>	<u>4,243</u>	<u>2,967</u>
OSD & RELATED ACTIVITIES B/	4,255	2,520	1,735	1,220	515
DEFENSE AUDIOVISUAL AGENCY	608	478	130	17	113
DEFENSE AUDIT SERVICE	388	388	-	-	-
DEFENSE COMMUNICATIONS AGENCY	3,149	1,696	1,453	444	1,009
DEFENSE CONTRACT AUDIT AGENCY	3,588	3,588	-	-	-
DEFENSE INTELLIGENCE AGENCY	4,393	2,631	1,762	1,138	624
DEFENSE INVESTIGATIVE SERVICE	2,620	2,475	145	73	72
DEFENSE LOGISTICS AGENCY	48,570	47,604	966	812	154
DEFENSE MAPPING AGENCY	8,934	8,496	438	180	258
DEFENSE NUCLEAR AGENCY	1,132	644	488	302	186
DEPARTMENT OF DEFENSE DEPENDENTS SCHOOLS	9,001	9,001	-	-	-
UNIFORMED SERVICES UNIVERSITY OF THE HEALTH SCIENCES	703	610	93	57	36

A/ INCLUDES TOTAL PAID DIRECT HIRE CIVILIAN EMPLOYMENT AS REPORTED ON LINE 1 OF SF 113-A.

B/ INCLUDES OSD-JCS, AFIS, CHAMPUS, DARPA, DSA, TRIMIS, USCMA, OEA, AND WHS.

TABLE 5  
 DEPARTMENT OF DEFENSE  
 TOTAL PAID CIVILIAN EMPLOYMENT BY CATEGORY  
 AUGUST 31, 1981

TYPE PERSONNEL	TOTAL DEPT OF DEFENSE	ARMY	NAVY	AIR FORCE	OTHER DEFENSE ACTIVITIES
<u>WORLDWIDE TOTAL</u>	<u>1,094,629</u>	<u>421,559</u>	<u>338,471</u>	<u>252,742</u>	<u>81,857</u>
<u>DIRECT HIRE A/</u>	1,016,522	369,179	327,726	239,486	80,131
BY FULL-TIME & PART-TIME:					
FULL-TIME	995,379	359,940	322,204	235,163	78,072
PART-TIME & INTERMITTENT	21,143	9,239	5,522	4,323	2,059
BY CITIZENSHIP:					
U.S. CITIZENS B/ FOREIGN NATIONALS	977,959 38,563	353,017 16,162	312,843 14,883	232,601 6,885	79,498 633
BY SALARIED & WAGE BOARD:					
SALARIED	648,963	246,722	182,374	151,503	68,364
WAGE BOARD	367,559	122,457	145,352	87,983	11,767
<u>INDIRECT HIRE C/</u>	78,107	52,380	10,745	13,256	1,726
<u>TOTAL U.S. CITIZENS</u>	977,959	353,017	312,843	232,601	79,498
<u>TOTAL FOREIGN NATIONALS</u>	116,670	68,542	25,628	20,141	2,359

A/ AS REPORTED TO THE OFFICE OF PERSONNEL MANAGEMENT ON LINE 1 OF SF 113-A.  
 B/ INCLUDES U.S. CITIZENS BY VIRTUE OF CITIZENSHIP IN A U.S. TERRITORY.  
 C/ FOREIGN NATIONALS SUPPORTING U.S. MILITARY IN OVERSEAS AREAS UNDER CONTRACTS/AGREEMENTS WITH FOREIGN GOVERNMENTS.

TABLE 6

DEPARTMENT OF DEFENSE  
TOTAL PAID CIVILIAN EMPLOYMENT BY LOCATION

AUGUST 31, 1981

TYPE PERSONNEL	TOTAL DEPT OF DEFENSE	ARMY	NAVY	AIR FORCE	OTHER DEFENSE ACTIVITIES
<u>WORLDWIDE TOTAL</u>	<u>1,094,629</u>	<u>421,559</u>	<u>338,471</u>	<u>252,742</u>	<u>81,857</u>
<u>UNITED STATES (DIRECT HIRE)</u>	<u>930,684</u>	<u>328,391</u>	<u>305,408</u>	<u>226,561</u>	<u>70,244</u>
BY LOCATION:					
WASHINGTON, D.C.	82,487	26,408	35,673	6,550	13,856
REMAINDER OF U.S. A/	848,197	301,983	269,815	220,011	56,388
BY SALARIED & WAGE BOARD:					
SALARIED	601,590	229,822	172,952	140,170	58,646
WAGE BOARD	329,094	98,569	132,536	86,391	11,598
<u>U.S. TERRITORIES (DIRECT HIRE)</u>	<u>6,615</u>	<u>1,117</u>	<u>4,504</u>	<u>952</u>	<u>42</u>
BY CITIZENSHIP:					
U.S. CITIZENS B/	6,568	1,116	4,459	951	42
FOREIGN NATIONALS	47	1	45	1	0
BY SALARIED & WAGE BOARD:					
SALARIED	3,072	755	1,887	399	31
WAGE BOARD	3,543	362	2,617	553	11
<u>FOREIGN COUNTRIES</u>	<u>157,330</u>	<u>92,051</u>	<u>28,479</u>	<u>25,229</u>	<u>11,571</u>
<u>DIRECT HIRE</u>	<u>79,223</u>	<u>39,671</u>	<u>17,734</u>	<u>11,973</u>	<u>9,845</u>
BY CITIZENSHIP:					
U.S. CITIZENS B/	41,197	23,866	2,966	5,127	9,238
FOREIGN NATIONALS	38,026	15,805	14,768	6,846	607
BY SALARIED & WAGE BOARD:					
SALARIED	44,301	16,145	7,535	10,934	9,687
WAGE BOARD	34,922	23,526	10,199	1,039	158
<u>INDIRECT HIRE (FOREIGN NATIONALS)</u>	<u>78,107</u>	<u>52,380</u>	<u>10,745</u>	<u>13,256</u>	<u>1,726</u>

A/ INCLUDES ALASKA AND HAWAII

B/ INCLUDES U.S. CITIZENS BY VIRTUE OF CITIZENSHIP IN A U.S. TERRITORY

TABLE 7  
 DEPARTMENT OF DEFENSE  
 INDIRECT HIRE PERSONNEL BY COUNTRY  
 AUGUST 31, 1981

COUNTRY	TOTAL	ARMY	NAVY	AIR FORCE	OTHER DEFENSE ACTIVITIES
<u>TOTAL</u>	<u>78,107</u>	<u>52,380</u>	<u>10,745</u>	<u>13,256</u>	<u>1,726</u>
BELGIUM	469	453	-	-	16
GERMANY	52,349	45,073	28	6,017	1,231
GREECE	565	3	115	428	19
GUAM	4	-	4	-	-
ITALY	1	-	1	-	-
JAPAN (INCLUDES OKINAWA)	17,850	3,478	9,369	4,745	258
KOREA	3,113	3,113	-	-	-
NETHERLANDS	344	260	-	71	13
PHILIPPINES	7	-	6	-	1
SPAIN	2,099	-	1,157	857	85
UNITED KINGDOM	1,306	-	65	1,138	103

INDIRECT HIRE PERSONNEL ARE FOREIGN NATIONALS SUPPORTING U.S. MILITARY FORCES UNDER CONTRACTS OR AGREEMENTS WITH FOREIGN GOVERNMENTS.

TABLE 8  
 DEPARTMENT OF DEFENSE  
 MONTHLY ACCESSIONS AND SEPARATIONS OF DIRECT HIRE CIVILIAN EMPLOYEES

DATE	ACCESSIONS		SEPARATIONS	
	NUMBER	RATE	NUMBER	RATE
1980				
JANUARY	15,754	1.63	19,744	2.05
FEBRUARY	12,841	1.33	12,958	1.34
MARCH	17,794	1.84	15,575	1.61
APRIL	15,226	1.57	12,488	1.29
MAY	18,584	1.91	13,311	1.37
JUNE	35,078	3.55	22,012	2.23
JULY	16,997	1.72	15,140	1.53
AUGUST	19,622	2.02	34,671	3.56
SEPTEMBER	25,301	2.64	38,376	4.00
OCTOBER	23,733	2.45	13,652	1.41
NOVEMBER	12,973	1.34	11,312	1.16
DECEMBER	12,508	1.29	10,351	1.06
1981				
JANUARY	18,714	1.92	19,917	2.05
FEBRUARY	7,734	0.80	9,983	1.03
MARCH	12,348	1.27	9,596	0.98
APRIL	14,992	1.53	9,681	0.99
MAY	21,570	2.18	11,490	1.16
JUNE	39,402	3.91	20,928	2.08
JULY	24,016	2.35	15,497	1.52
AUGUST	23,514	2.31	30,080	2.96

TABLE 9  
 DEPARTMENT OF DEFENSE  
 MONTHLY SEPARATIONS OF DIRECT HIRE CIVILIAN EMPLOYEES BY CAUSE  
 WORLDWIDE

DATE	TOTAL	QUIT	RIF	TERMINATION A/	OTHER B/
1980					
JANUARY	19,744	5,239	152	2,134	12,219
FEBRUARY	12,958	4,247	82	1,441	7,188
MARCH	15,575	4,642	101	1,862	8,970
APRIL	12,488	4,597	87	2,032	5,772
MAY	13,311	5,087	73	2,537	5,614
JUNE	22,012	5,864	121	2,739	13,288
JULY	15,140	6,165	151	2,707	6,117
AUGUST	34,671	15,070	144	7,226	12,231
SEPTEMBER	38,376	13,502	243	14,302	10,329
OCTOBER	13,652	4,812	117	3,967	4,756
NOVEMBER	11,312	3,952	65	2,470	4,825
DECEMBER	10,351	2,985	69	1,858	5,439
1981					
JANUARY	19,917	5,123	169	2,263	12,362
FEBRUARY	9,983	3,896	63	1,314	4,710
MARCH	9,596	3,460	38	1,708	4,390
APRIL	9,681	3,953	45	1,556	4,127
MAY	11,490	4,965	95	1,432	4,998
JUNE	20,928	5,915	104	2,367	12,542
JULY	15,497	7,174	342	2,228	5,753
AUGUST	30,080	15,798	37	7,233	7,012

A/ TERMINATIONS OF TEMPORARY OR EXCEPTED APPOINTMENTS OR OF PERSONAL SERVICE CONTRACTS.

B/ INCLUDES TRANSFERS, DISCHARGES, DISPLACEMENTS, EXTENDED LWOP AND SUSPENSIONS, DEATHS, DISABILITIES AND RETIREMENTS.

