

AD-A151 134

CIVILIAN MANPOWER STATISTICS, OCTOBER, FY-82. (U)
WASHINGTON HEADQUARTERS SERVICE (DOD) DIR FOR INFO
OP & RPTS. OCT 81. DIOR/MO4-82/01

WA

UNCLASSIFIED

F/G 5/9

N/L

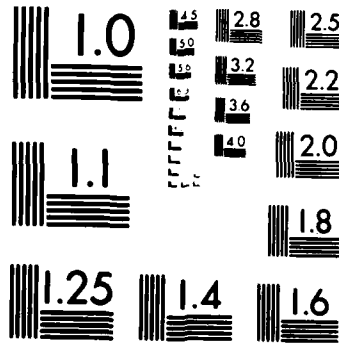
1 OF 1
AD-A151 134



END
FILMED
11 04 85

1 OF 1

AD-A151 134



MICROCOPY RESOLUTION TEST CHART
NATIONAL BUREAU OF STANDARDS 1963 A

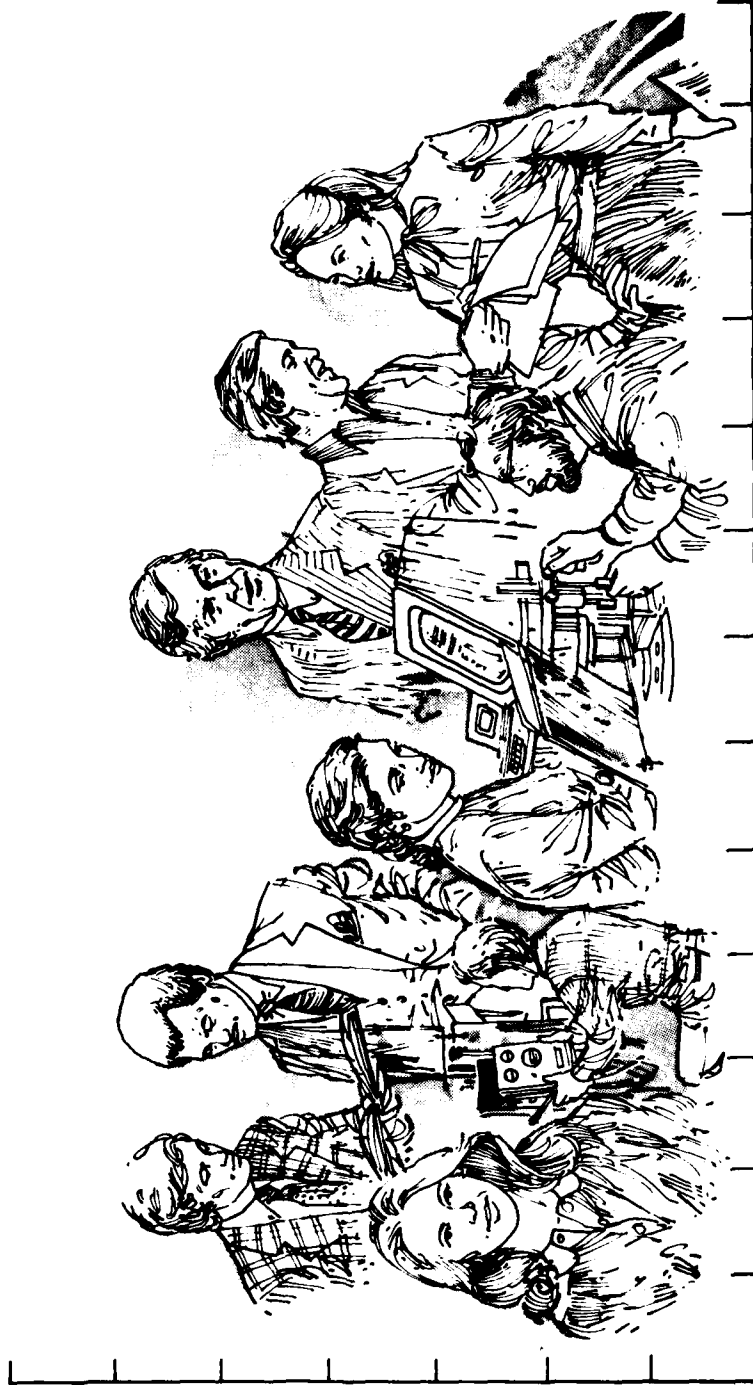
THIS REPORT IS UNCLASSIFIED AND
ITS DISTRIBUTION IS UNLIMITED



Department of Defense

CIVILIAN MANPOWER STATISTICS

OCTOBER 1981



OSD
UNIVERSITY MICROFILMS
SERIALS ACQUISITION
300 N ZEEB RD
ANN ARBOR MI 48106

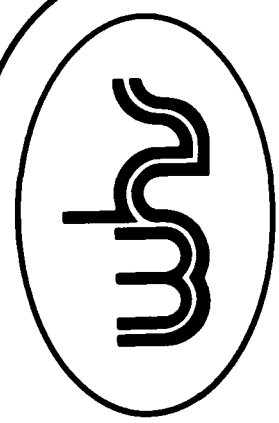
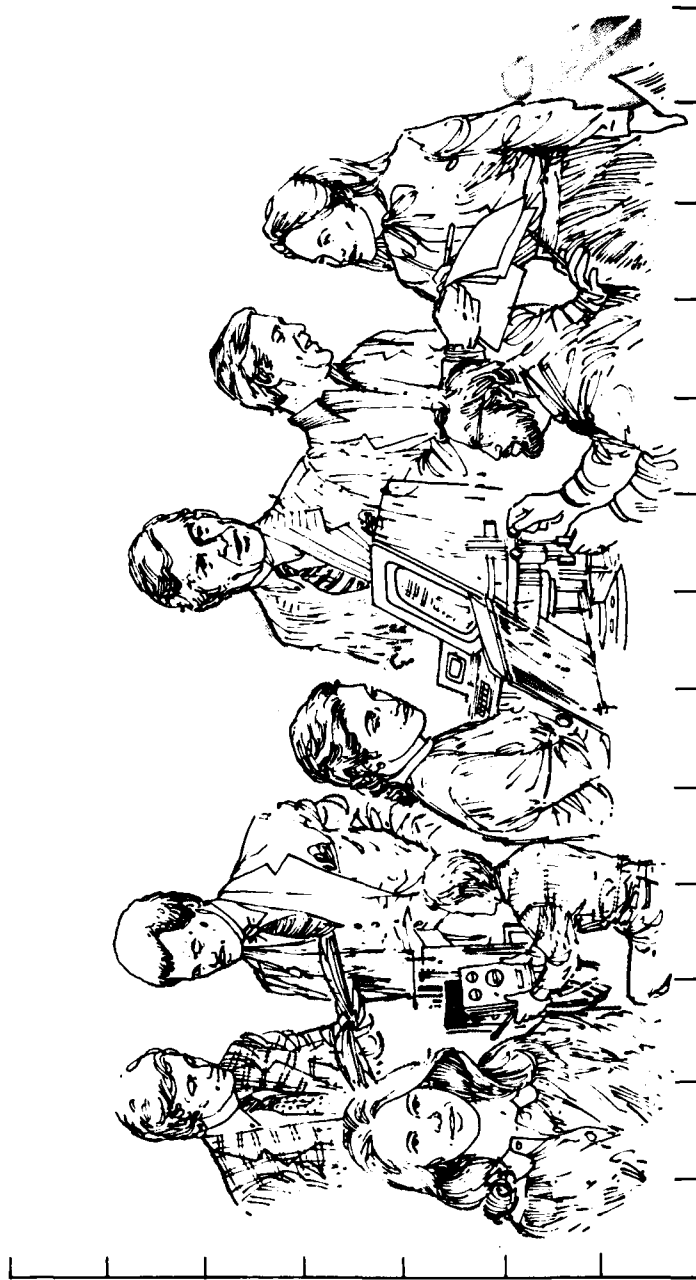




Department of Defense
CIVILIAN MANPOWER STATISTICS

OSD

WASHINGTON HEADQUARTERS SERVICES



DIRECTORATE FOR INFORMATION
 OPERATIONS AND REPORTS (DIOR)
 THE PENTAGON, WASHINGTON, D.C.

F O R E W O R D

CIVILIAN MANPOWER STATISTICS (CMS) is a monthly publication of Washington Headquarters Services, Directorate for Information Operations and Reports (WHS/DIOR) of the Office of the Secretary of Defense.

CMS provides audited, statistical information on the entire civilian workforce of the Department of Defense with the exception of personnel of the National Security Agency and personnel paid from non-appropriated funds. It is produced primarily from a computerized data base developed and maintained by WHS/DIOR from monthly information provided to the Office of Personnel Management on SF 113-A, Monthly Report of Federal Civilian Employment.

Questions on material in this publication and requests for additional copies or changes in distribution should be addressed to the Director, Washington Headquarters Services, Room 3E843, The Pentagon, Washington, D.C. 20301.

T A B L E O F C O N T E N T S

<u>Table Number</u>	<u>Former Designation</u>	<u>Title</u>	<u>PAGE</u>
		Glossary	1
Table 1	P10 (Rev.)	Department of Defense - Civilian Employment Summary	2
Table 2	P30.11 (Rev.)	Department of Defense - Trends in Civilian Employment Subject to OMB Ceiling	3
Table 3	P30.10	Department of Defense - Direct Hire Civilian Employment Subject to OMB Ceiling	4
Table 4	P12.2	Department of Defense - Civilian and Military Personnel--OSD-JCS and Other Defense Activities	5
Table 5	P31.0	Department of Defense - Total Paid Civilian Employment by Category	6
Table 6	P32.0	Department of Defense - Total Paid Civilian Employment by Location	7
Table 7	P32.6	Department of Defense - Indirect Hire Personnel by Country	8
Table 8	P33.1	Department of Defense - Monthly Accessions and Separations of Direct Hire Civilian Employees	9
Table 9	P33.2	Department of Defense - Monthly Separations of Direct Hire Civilian Employees by Cause	10

G L O S S A R Y

Military Functions. Activities normally associated with the uniform services.

Civil Functions. Functions primarily associated with the Civil Works program of the Army Corps of Engineers. This program encompasses planning, programming, designing, constructing, and operating Federal water resource projects for navigation, flood control, hydroelectric power, water supply, recreation, and related activities. Civil Functions also includes cemeterial workers (Army) and several conservation management employees (Air Force).

Direct Hire Civilians. Employees hired directly by an agency of the Department of Defense. Included are foreign nationals hired by the Department of Defense to support DoD activities in their home countries.

Indirect Hire Civilians. Foreign nationals assigned to support U.S. forces through contracts or agreements with foreign governments (or agencies thereof). These personnel are employees of the foreign governments involved.

Total Paid Civilian Employment. Total direct and indirect hire civilian employment. For direct hire, includes, with some exceptions, all direct hire employees who had not officially separated as of the report date and who either worked during the reporting period or were on paid leave.

OMB Ceiling Employment. Employees subject to Office of Management and Budget (OMB) ceilings established to administer Presidential employment ceiling limitations. For direct hire employees, it excludes employees such as Summer Aids or in the Stay-in-School, Federal Junior Fellowship, and Worker-Trainee Opportunity Programs, and those who are covered by other official exemptions granted by OMB.

Agencies.

OSD-JCS = Office of the Secretary of Defense and Organization of the
 Joint Chiefs of Staff
AFIS = Armed Forces Information Service
CHAMPUS = Civilian Health and Medical Program of the Uniform Services
DARPA = Defense Advanced Research Projects Agency
DSAA = Defense Security Assistance Agency
TRIMIS = Tri-Service Medical Information System
USCMA = U.S. Court of Military Appeals
OEA = Office of Economic Adjustment
WHS = Washington Headquarters Services

TABLE 1
DEPARTMENT OF DEFENSE
CIVILIAN EMPLOYMENT SUMMARY

OCTOBER 31, 1981

CIVILIAN EMPLOYMENT A/	TOTAL DOD	ARMY	B/ NAVY	AIR FORCE	OTHER DEFENSE AGENCIES C/
<u>MILITARY FUNCTIONS</u>					
OMB CEILING EMPLOYMENT	1,034,431	374,661	330,868	248,321	80,581
DIRECT HIRE	954,095	319,906	320,280	235,096	78,813
INDIRECT HIRE	80,336	54,755	10,588	13,225	1,768
TOTAL EMPLOYMENT	1,045,595	378,064	335,644	250,345	81,542
DIRECT HIRE	965,259	323,309	325,056	237,120	79,774
INDIRECT HIRE	80,336	54,755	10,588	13,225	1,768
<u>CIVIL FUNCTIONS (ALL DIRECT HIRE)</u>					
OMB CEILING EMPLOYMENT	31,832	31,828	0	4	0
TOTAL EMPLOYMENT	32,773	32,769	0	4	0
<u>TOTAL MILITARY AND CIVIL FUNCTIONS</u>					
OMB CEILING EMPLOYMENT	1,066,263	406,489	330,868	248,325	80,581
DIRECT HIRE	985,927	351,734	320,280	235,100	78,813
INDIRECT HIRE	80,336	54,755	10,588	13,225	1,768
TOTAL EMPLOYMENT	1,078,368	410,833	335,644	250,349	81,542
DIRECT HIRE	998,032	356,078	325,056	237,124	79,774
INDIRECT HIRE	80,336	54,755	10,588	13,225	1,768

A/ INCLUDED IN TOTAL EMPLOYMENT AND EXCLUDED FROM OMB CEILING EMPLOYMENT ARE EMPLOYEES EXEMPT FROM OFFICE OF MANAGEMENT AND BUDGET (OMB) CEILING CONTROL, I.E. SUMMER AIDS AND EMPLOYEES IN THE STAY-IN-SCHOOL, FEDERAL JUNIOR FELLOWSHIP, AND WORKER-TRAINEE OPPORTUNITY PROGRAMS, AND THOSE COVERED BY OTHER OFFICIAL EXEMPTIONS GRANTED BY OMB.
 B/ INCLUDES MARINE CORPS CIVILIAN PERSONNEL.
 C/ INCLUDES OSD, JCS, AFIS, CHAMPUS, DARP, DSAA, TRIMIS, USCSA, OEA, MHS, AND THE DEFENSE AGENCIES (LISTED IN TABLE 3).

TABLE 2

DEPARTMENT OF DEFENSE
TRENDS IN CIVILIAN EMPLOYMENT
SUBJECT TO OMB CEILING

DEPARTMENT AND FUNCTION	SEP 30, 78	SEP 30, 79	SEP 30, 80	SEP 30, 81	OCT 31, 81
<u>MILITARY FUNCTIONS</u>	<u>1,016,751</u>	<u>991,081</u>	<u>990,356</u>	<u>1,019,466</u>	<u>1,034,431</u>
DIRECT HIRE A/	935,703	915,764	915,786	939,942	954,095
INDIRECT HIRE B/	81,048	75,317	74,570	79,524	80,336
ARMY	371,369	359,121	360,508	372,111	374,661
DIRECT HIRE	316,078	309,475	311,795	318,278	319,906
INDIRECT HIRE	55,291	49,646	48,713	53,833	54,755
NAVY	316,796	310,176	308,715	320,858	330,868
DIRECT HIRE	306,420	299,449	297,984	310,123	320,280
INDIRECT HIRE	10,376	10,727	10,731	10,735	10,588
AIR FORCE	251,091	245,082	244,342	246,165	248,321
DIRECT HIRE	237,024	231,838	230,938	232,933	235,096
INDIRECT HIRE	14,067	13,244	13,404	13,232	13,225
OTHER DEFENSE ACTIVITIES	77,495	76,702	76,791	80,332	80,581
DIRECT HIRE	76,181	75,002	75,069	78,608	78,813
INDIRECT HIRE	1,314	1,700	1,722	1,724	1,768
<u>CIVIL FUNCTIONS (ALL DIRECT HIRE) A/</u>	<u>33,590</u>	<u>33,342</u>	<u>32,611</u>	<u>31,800</u>	<u>31,832</u>
ARMY	33,586	33,336	32,608	31,796	31,828
AIR FORCE	4	6	3	4	4
<u>TOTAL MILITARY AND CIVIL FUNCTIONS</u>	<u>1,050,341</u>	<u>1,024,423</u>	<u>1,022,967</u>	<u>1,051,266</u>	<u>1,066,263</u>
DIRECT HIRE A/	969,293	949,106	948,397	971,742	985,927
INDIRECT HIRE B/	81,048	75,317	74,570	79,524	80,336

A/ AS REPORTED OFFICIALLY TO THE OFFICE OF PERSONNEL MANAGEMENT ON LINE 29 OF SF 113-A. EXCLUDES EMPLOYEES EXEMPT FROM THE PRESIDENT'S CEILING CONTROL.

B/ FOREIGN NATIONALS SUPPORTING U.S. MILITARY FORCES OVERSEAS UNDER CONTRACTS OR AGREEMENTS WITH FOREIGN GOVERNMENTS. ALL INDIRECT HIRES SUPPORT MILITARY FUNCTIONS.

TABLE 3

DEPARTMENT OF DEFENSE
DIRECT HIRE CIVILIAN EMPLOYMENT
SUBJECT TO OMB CEILING A/

COMPONENT	TOTAL EMPLOYMENT		FULL-TIME W/ PERMANENT APPOINTMENTS	
	SEP 30, 81	OCT 31, 81	SEP 30, 81 C/	OCT 31, 81
				CEILING
				SEP 30, 82 B/
<u>MILITARY FUNCTIONS</u>	<u>939,942</u>	<u>954,095</u>		<u>861,115</u>
ARMY	318,278	319,906		279,513
NAVY	310,123	320,280		287,575
AIR FORCE	232,933	235,096		220,356
OSD & RELATED ACTIVITIES D/ DEFENSE AUDIOVISUAL AGENCY	2,471	2,480		2,239
DEFENSE AUDIT SERVICE	465	466		443
DEFENSE COMMUNICATIONS AGENCY	391	384		379
DEFENSE CONTRACT AUDIT AGENCY	1,635	1,619		1,568
DEFENSE INTELLIGENCE AGENCY	3,517	3,548		3,511
	2,606	2,646		2,390
DEFENSE INVESTIGATIVE SERVICE	2,411	2,464		2,432
DEFENSE LOGISTICS AGENCY	46,058	46,111		44,427
DEFENSE MAPPING AGENCY	8,296	8,404		8,231
DEFENSE NUCLEAR AGENCY	615	617		582
DEPARTMENT OF DEFENSE DEPENDENT'S SCHOOLS	9,537	9,457		6,995
UNIFORM SERVICES UNIVERSITY OF THE HEALTH SCIENCES	606	617		474
<u>CIVIL FUNCTIONS</u>	<u>31,800</u>	<u>31,832</u>		<u>29,447</u>
ARMY	31,796	31,828		29,443
AIR FORCE	4	4		4
<u>TOTAL MILITARY AND CIVIL FUNCTIONS</u>	<u>971,742</u>	<u>985,927</u>		<u>890,562</u>

A/ AS REPORTED OFFICIALLY TO THE OFFICE OF PERSONNEL MANAGEMENT ON LINE 29 OF SF 113-A.

B/ NOT AVAILABLE UNTIL DECEMBER 1981.

C/ NOT AVAILABLE. COLLECTION OF OMB CEILING DATA ON FULL-TIME W/PERMANENT APPOINTMENTS COMMENCED WITH THE OCTOBER 1981 REPORT.

D/ INCLUDES OSD-JCS, AFIS, CHAMPUS, DARPA, DSAA, TRIMIS, USCMA, OEA, AND WHS.

TABLE 4

DEPARTMENT OF DEFENSE
CIVILIAN AND MILITARY PERSONNEL
OSD-JCS AND OTHER DEFENSE ACTIVITIES

OCTOBER 31, 1981

COMPONENT	TOTAL	A/ CIVILIAN	TOTAL	MILITARY	
				OFFICER	ENLISTED
<u>TOTALS</u>	<u>87,036</u>	<u>79,774</u>	<u>7,262</u>	<u>4,281</u>	<u>2,981</u>
OSD & RELATED ACTIVITIES <u>B/</u>	4,227	2,500	1,727	1,210	517
DEFENSE AUDIOVISUAL AGENCY	588	466	122	17	105
DEFENSE AUDIT SERVICE	384	384	-	-	-
DEFENSE COMMUNICATIONS AGENCY	3,119	1,657	1,462	447	1,015
DEFENSE CONTRACT AUDIT AGENCY	3,566	3,566	-	-	-
DEFENSE INTELLIGENCE AGENCY	4,469	2,647	1,822	1,184	638
DEFENSE INVESTIGATIVE SERVICE	2,640	2,500	140	71	69
DEFENSE LOGISTICS AGENCY	47,832	46,857	975	815	160
DEFENSE MAPPING AGENCY	8,931	8,489	442	184	258
DEFENSE NUCLEAR AGENCY	1,113	634	479	296	183
DEPARTMENT OF DEFENSE DEPENDENTS SCHOOLS	9,457	9,457	-	-	-
UNIFORMED SERVICES UNIVERSITY OF THE HEALTH SCIENCES	710	617	93 C/	57	36

A/ INCLUDES TOTAL PAID DIRECT HIRE CIVILIAN EMPLOYMENT AS REPORTED ON LINE 1 OF SF 113-A.

B/ INCLUDES OSD-JCS, AFIS, CHAMPUS, DARPA, DSAA, TRIMIS, USCSMA, OEA, AND WHS.

C/ EXCLUDES STUDENTS.

TABLE 5

DEPARTMENT OF DEFENSE
TOTAL PAID CIVILIAN EMPLOYMENT BY CATEGORY

OCTOBER 31, 1981

TYPE PERSONNEL	TOTAL DEPT OF DEFENSE	ARMY	NAVY	AIR FORCE	OTHER DEFENSE ACTIVITIES
<u>WORLDWIDE TOTAL</u>	<u>1,078,368</u>	<u>410,833</u>	<u>335,644</u>	<u>250,349</u>	<u>81,542</u>
<u>DIRECT HIRE A/</u>	<u>998,032</u>	<u>356,078</u>	<u>325,056</u>	<u>237,124</u>	<u>79,774</u>
BY FULL-TIME & PART-TIME:					
FULL-TIME	975,451	347,323	318,537	232,608	76,983
PART-TIME & INTERMITTENT	22,581	8,755	6,519	4,516	2,791
BY CITIZENSHIP:					
U.S. CITIZENS B/ FOREIGN NATIONALS	959,347 38,685	339,721 16,357	310,238 14,818	230,266 6,858	79,122 652
BY SALARIED & WAGE BOARD:					
SALARIED	636,487	239,341	179,677	149,340	68,129
WAGE BOARD	361,545	116,737	145,379	87,784	11,645
<u>INDIRECT HIRE C/</u>	<u>80,336</u>	<u>54,755</u>	<u>10,588</u>	<u>13,225</u>	<u>1,768</u>
<u>TOTAL U.S. CITIZENS</u>	<u>959,347</u>	<u>339,721</u>	<u>310,238</u>	<u>230,266</u>	<u>79,122</u>
<u>TOTAL FOREIGN NATIONALS</u>	<u>119,021</u>	<u>71,112</u>	<u>25,406</u>	<u>20,083</u>	<u>2,420</u>

A/ AS REPORTED TO THE OFFICE OF PERSONNEL MANAGEMENT ON LINE OF 113-A.

B/ INCLUDES U.S. CITIZENS BY VIRTUE OF CITIZENSHIP IN U.S. TERRITORIES.

C/ FOREIGN NATIONALS SUPPORTING U.S. MILITARY IN OVERSEAS AREAS UNDER CONTRACTS/AGREEMENTS WITH FOREIGN GOVERNMENTS.

TABLE 6
 DEPARTMENT OF DEFENSE
 TOTAL PAID CIVILIAN EMPLOYMENT BY LOCATION
 OCTOBER 31, 1981

TYPE PERSONNEL	TOTAL DEPT OF DEFENSE	ARMY	NAVY	AIR FORCE	OTHER DEFENSE ACTIVITIES
<u>WORLDWIDE TOTAL</u>	<u>1,078,368</u>	<u>410,833</u>	<u>335,644</u>	<u>250,349</u>	<u>81,542</u>
<u>UNITED STATES (DIRECT HIRE)</u>	<u>914,810</u>	<u>318,037</u>	<u>303,093</u>	<u>224,293</u>	<u>69,387</u>
BY LOCATION: WASHINGTON, D.C. REMAINDER OF U.S. A/ BY SALARIED & WAGE BOARD: SALARIED WAGE BOARD	80,964 833,846 588,474 326,336	25,842 292,195 222,178 95,859	35,096 267,997 170,411 132,682	6,283 218,010 138,057 86,236	13,743 55,644 57,828 11,559
<u>U.S. TERRITORIES (DIRECT HIRE)</u>	<u>6,371</u>	<u>1,050</u>	<u>4,365</u>	<u>915</u>	<u>41</u>
BY CITIZENSHIP: U.S. CITIZENS B/ FOREIGN NATIONALS BY SALARIED & WAGE BOARD: SALARIED WAGE BOARD	6,313 58 2,846 3,525	1,049 1 690 360	4,309 56 1,741 2,624	914 1 385 530	41 0 30 11
<u>FOREIGN COUNTRIES</u>	<u>157,187</u>	<u>91,746</u>	<u>28,186</u>	<u>25,141</u>	<u>12,114</u>
<u>DIRECT HIRE</u>	<u>76,851</u>	<u>36,991</u>	<u>17,598</u>	<u>11,916</u>	<u>10,346</u>
BY CITIZENSHIP: U.S. CITIZENS B/ FOREIGN NATIONALS BY SALARIED & WAGE BOARD: SALARIED WAGE BOARD	38,682 38,169 45,167 31,684	20,973 16,018 16,473 20,518	2,894 14,704 7,525 10,073	5,095 6,821 10,898 1,018	9,720 626 10,271 75
<u>INDIRECT HIRE (FOREIGN NATIONALS)</u>	<u>80,336</u>	<u>54,755</u>	<u>10,588</u>	<u>13,225</u>	<u>1,768</u>

A/ INCLUDES ALASKA AND HAWAII

B/ INCLUDES U.S. CITIZENS BY VIRTUE OF CITIZENSHIP IN A U.S. TERRITORY

TABLE 7
 DEPARTMENT OF DEFENSE
 INDIRECT HIRE PERSONNEL BY COUNTRY
 OCTOBER 31, 1981

COUNTRY	TOTAL	ARMY	NAVY	AIR FORCE	OTHER DEFENSE ACTIVITIES
<u>TOTAL</u>	<u>80,336</u>	<u>54,755</u>	<u>10,588</u>	<u>13,225</u>	<u>1,768</u>
BELGIUM	521	503	-	2	16
GERMANY	54,666	47,371	28	5,999	1,268
GREECE	578	16	115	428	19
GUAM	4	-	4	-	-
ITALY	1	-	1	-	-
JAPAN (INCLUDES OKINAWA)	17,714	3,472	9,222	4,762	258
KOREA	3,124	3,124	-	-	-
NETHERLANDS	352	269	-	70	13
PHILIPPINES	7	-	6	-	1
SPAIN	2,049	-	1,147	815	87
UNITED KINGDOM	1,320	-	65	1,149	106

INDIRECT HIRE PERSONNEL ARE FOREIGN NATIONALS SUPPORTING U.S. MILITARY FORCES UNDER CONTRACTS OR AGREEMENTS WITH FOREIGN GOVERNMENTS.

TABLE 8
DEPARTMENT OF DEFENSE
MONTHLY ACCESSIONS AND SEPARATIONS OF DIRECT HIRE CIVILIAN EMPLOYEES

DATE	ACCESSIONS		SEPARATIONS	
	NUMBER	RATE	NUMBER	RATE
1980				
JANUARY	15,754	1.63	19,744	2.05
FEBRUARY	12,841	1.33	12,958	1.34
MARCH	17,794	1.84	15,575	1.61
APRIL	15,226	1.57	12,488	1.29
MAY	18,584	1.91	13,311	1.37
JUNE	35,078	3.55	22,012	2.23
JULY	16,997	1.72	15,140	1.53
AUGUST	19,622	2.02	34,671	3.56
SEPTEMBER	25,301	2.64	38,376	4.00
OCTOBER	23,733	2.45	13,652	1.41
NOVEMBER	12,973	1.34	11,312	1.16
DECEMBER	12,508	1.29	10,351	1.06
1981				
JANUARY	18,714	1.92	19,917	2.05
FEBRUARY	7,734	0.80	9,983	1.03
MARCH	12,348	1.27	9,596	0.98
APRIL	14,992	1.53	9,681	0.99
MAY	21,570	2.18	11,490	1.16
JUNE	39,402	3.91	20,928	2.08
JULY	24,016	2.35	15,497	1.52
AUGUST	23,514	2.31	30,080	2.96
SEPTEMBER	18,071	1.84	47,292	4.81
OCTOBER	25,157	2.52	11,373	1.14

TABLE 9
DEPARTMENT OF DEFENSE
MONTHLY SEPARATIONS OF DIRECT HIRE CIVILIAN EMPLOYEES BY CAUSE

DATE	TOTAL	QUIT	RIF	TERMINATION A/	OTHER B/
1980					
JANUARY	19,744	5,239	152	2,134	12,219
FEBRUARY	12,958	4,247	82	1,441	7,188
MARCH	15,575	4,642	101	1,862	8,970
APRIL	12,488	4,597	87	2,032	5,772
MAY	13,311	5,087	73	2,537	5,614
JUNE	22,012	5,864	121	2,739	13,288
JULY	15,140	6,165	151	2,707	6,117
AUGUST	34,671	15,070	144	7,226	12,231
SEPTEMBER	38,376	13,502	243	14,302	10,329
OCTOBER	13,652	4,812	117	3,967	4,756
NOVEMBER	11,312	3,952	65	2,470	4,825
DECEMBER	10,351	2,985	69	1,858	5,439
1981					
JANUARY	19,917	5,123	169	2,263	12,362
FEBRUARY	9,983	3,896	63	1,314	4,710
MARCH	9,596	3,460	38	1,708	4,390
APRIL	9,681	3,953	45	1,556	4,127
MAY	11,490	4,965	95	1,432	4,998
JUNE	20,928	5,915	104	2,367	12,542
JULY	15,497	7,174	342	2,228	5,753
AUGUST	30,080	15,798	37	7,233	7,012
SEPTEMBER	47,292	16,428	110	21,587	9,167
OCTOBER	11,373	4,070	190	3,257	3,856

A/ TERMINATIONS OF TEMPORARY OR EXCEPTED APPOINTMENTS OR OF PERSONAL SERVICE CONTRACTS.
B/ INCLUDES TRANSFERS, DISCHARGES, DISPLACEMENTS, EXTENDED LWOP AND SUSPENSIONS, DEATHS, DISABILITIES AND RETIREMENTS.

