

AD-A151 135

CIVILIAN MANPOWER STATISTICS, NOVEMBER, FY-82. (U)  
WASHINGTON HEADQUARTERS SERVICE (DOD) DIR FOR INFO  
OP & RPTS. NOV 81. DIOR/M04-82/02

1/1

UNCLASSIFIED

F/G 5/9

N/L

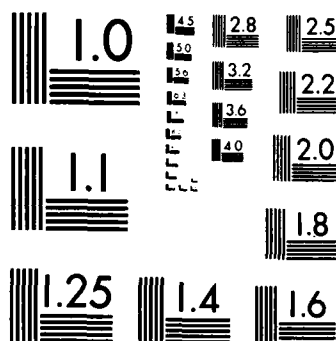
1 OF 1  
AD-A151 135



END  
FILMED  
11 04 85

# 1 OF 1

# AD-A151 135



MICROCOPY RESOLUTION TEST CHART  
NATIONAL BUREAU OF STANDARDS-1963-A

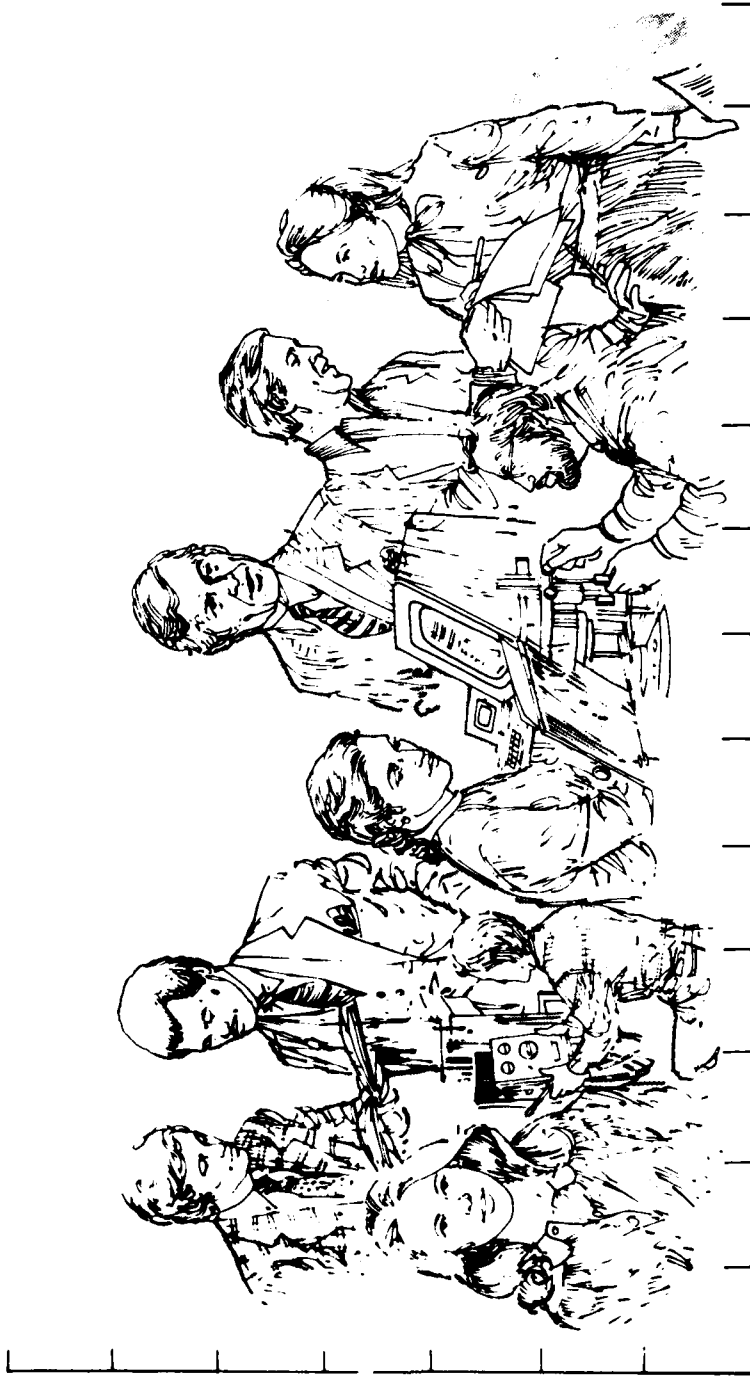
THIS REPORT IS UNCLASSIFIED AND  
ITS DISTRIBUTION IS UNLIMITED



Department of Defense

# CIVILIAN MANPOWER STATISTICS

NOVEMBER 1981



OSD  
MAN-POWER-STATISTICS-NOV-1981



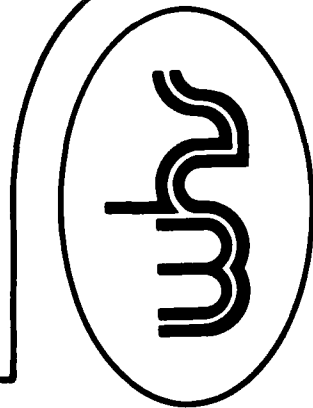
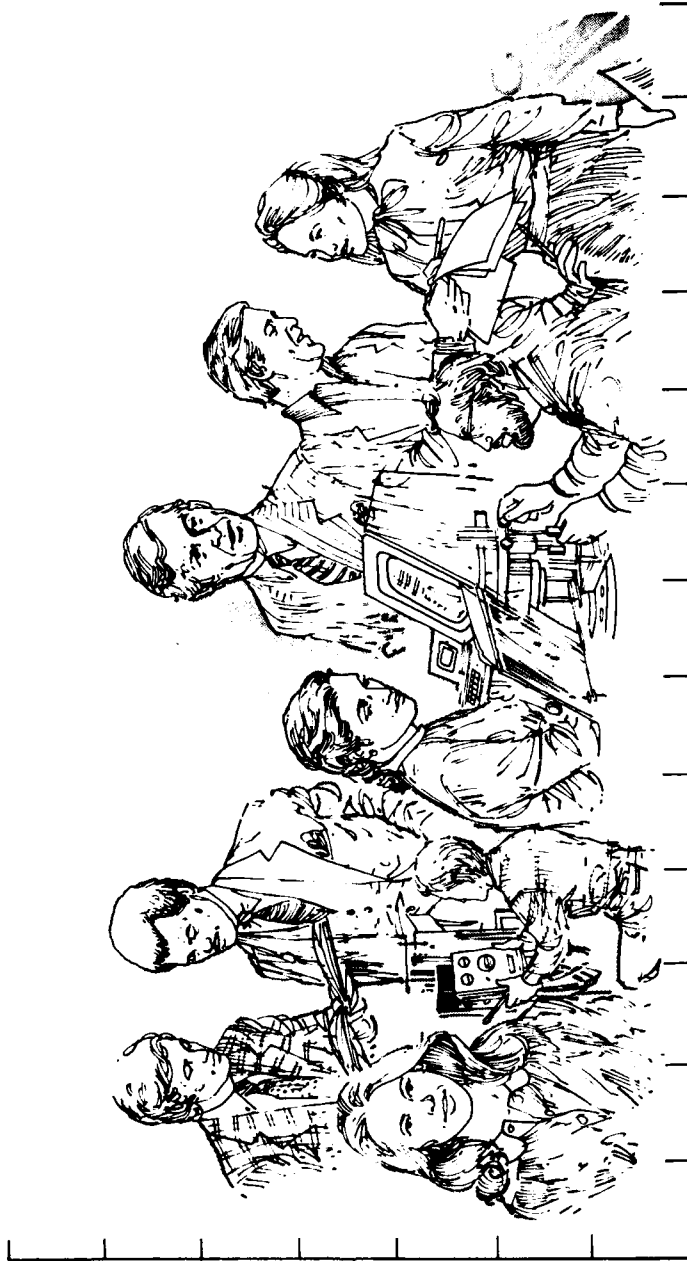


Department of Defense

# CIVILIAN MANPOWER STATISTICS

OSD

WASHINGTON HEADQUARTERS SERVICES



DIRECTORATE FOR INFORMATION  
OPERATIONS AND REPORTS (DIOR)  
THE PENTAGON, WASHINGTON, D.C.

## F O R E W O R D

CIVILIAN MANPOWER STATISTICS (CMS) is a monthly publication of Washington Headquarters Services, Directorate for Information Operations and Reports (WHS/DIOR) of the Office of the Secretary of Defense.

CMS provides audited, statistical information on the entire civilian workforce of the Department of Defense with the exception of personnel of the National Security Agency and personnel paid from non-appropriated funds. It is produced primarily from a computerized data base developed and maintained by WHS/DIOR from monthly information provided to the Office of Personnel Management on SF 113-A, Monthly Report of Federal Civilian Employment.

Questions on material in this publication and requests for additional copies or changes in distribution should be addressed to the Director, Washington Headquarters Services, Room 3E843, The Pentagon, Washington, D.C. 20301.

T A B L E O F C O N T E N T S

<u>Table Number</u>	<u>Former Designation</u>	<u>Title</u>	<u>PAGE</u>
		Glossary	1
Table 1	P10 (Rev.)	Department of Defense - Civilian Employment Summary	2
Table 2	P30.11 (Rev.)	Department of Defense - Trends in Civilian Employment Subject to OMB Ceiling	3
Table 3	P30.10	Department of Defense - Direct Hire Civilian Employment Subject to OMB Ceiling	4
Table 4	P12.2	Department of Defense - Civilian and Military Personnel--OSD-JCS and Other Defense Activities	5
Table 5	P31.0	Department of Defense - Total Paid Civilian Employment by Category	6
Table 6	P32.0	Department of Defense - Total Paid Civilian Employment by Location	7
Table 7	P32.6	Department of Defense - Indirect Hire Personnel by Country	8
Table 8	P33.1	Department of Defense - Monthly Accessions and Separations of Direct Hire Civilian Employees	9
Table 9	P33.2	Department of Defense - Monthly Separations of Direct Hire Civilian Employees by Cause	10

G L O S S A R Y

Military Functions. Activities normally associated with the uniform services.

Civil Functions. Functions primarily associated with the Civil Works program of the Army Corps of Engineers. This program encompasses planning, programming, designing, constructing, and operating Federal water resource projects for navigation, flood control, hydroelectric power, water supply, recreation, and related activities. Civil Functions also includes cemeterial workers (Army) and several conservation management employees (Air Force).

Direct Hire Civilians. Employees hired directly by an agency of the Department of Defense. Included are foreign nationals hired by the Department of Defense to support DoD activities in their home countries.

Indirect Hire Civilians. Foreign nationals assigned to support U.S. forces through contracts or agreements with foreign governments (or agencies thereof). These personnel are employees of the foreign governments involved.

Total Paid Civilian Employment. Total direct and indirect hire civilian employment. For direct hire, includes, with some exceptions, all direct hire employees who had not officially separated as of the report date and who either worked during the reporting period or were on paid leave.

OMB Ceiling Employment. Employees subject to Office of Management and Budget (OMB) ceilings established to administer Presidential employment ceiling limitations. For direct hire employees, it excludes employees such as Summer Aids or in the Stay-in-School, Federal Junior Fellowship, and Worker-Trainee Opportunity Programs, and those who are covered by other official exemptions granted by OMB.

Agencies.

OSD-JCS = Office of the Secretary of Defense and Organization of the  
          Joint Chiefs of Staff  
AFIS      = Armed Forces Information Service  
CHAMPUS   = Civilian Health and Medical Program of the Uniform Services  
DARPA      = Defense Advanced Research Projects Agency  
DSAA      = Defense Security Assistance Agency  
TRIMIS    = Tri-Service Medical Information System  
USCMA      = U.S. Court of Military Appeals  
OEA       = Office of Economic Adjustment  
WHS       = Washington Headquarters Services

TABLE 1  
DEPARTMENT OF DEFENSE  
CIVILIAN EMPLOYMENT SUMMARY

NOVEMBER 30, 1981

CIVILIAN EMPLOYMENT A/	TOTAL DOD	ARMY	R/ NAVY	AIR FORCE	OTHER DEFENSE AGENCIES C/
<u>MILITARY FUNCTIONS</u>					
OMB CEILING EMPLOYMENT	1,042,092	378,019	333,139	249,949	80,985
DIRECT HIRE	961,105	322,815	322,339	236,732	79,219
INDIRECT HIRE	80,987	55,204	10,800	13,217	1,766
TOTAL EMPLOYMENT	1,053,747	381,498	338,201	252,028	82,020
DIRECT HIRE	972,760	326,294	327,401	238,811	80,254
INDIRECT HIRE	80,987	55,204	10,800	13,217	1,766
<u>CIVIL FUNCTIONS (ALL DIRECT HIRE)</u>					
OMB CEILING EMPLOYMENT	31,972	31,968	0	4	0
TOTAL EMPLOYMENT	32,923	32,919	0	4	0
<u>TOTAL MILITARY AND CIVIL FUNCTIONS</u>					
OMB CEILING EMPLOYMENT	1,074,064	409,987	333,139	249,953	80,985
DIRECT HIRE	993,077	354,783	322,339	236,736	79,219
INDIRECT HIRE	80,987	55,204	10,800	13,217	1,766
TOTAL EMPLOYMENT	1,086,670	414,417	338,201	252,032	82,020
DIRECT HIRE	1,005,683	359,213	327,401	238,815	80,254
INDIRECT HIRE	80,987	55,204	10,800	13,217	1,766

A/ INCLUDED IN TOTAL EMPLOYMENT AND EXCLUDED FROM OMB CEILING EMPLOYMENT ARE EMPLOYEES EXEMPT FROM OFFICE OF MANAGEMENT AND BUDGET (OMB) CEILING CONTROL, I.E. SUMMER AIDS AND EMPLOYEES IN THE STAY-IN-SCHOOL, FEDERAL JUNIOR FELLOWSHIP, AND WORKER-TRAINEE OPPORTUNITY PROGRAMS, AND THOSE COVERED BY OTHER OFFICIAL EXEMPTIONS GRANTED BY OMB.

B/ INCLUDES MARINE CORPS CIVILIAN PERSONNEL.

C/ INCLUDES OSD, JCS, AFIS, CHAMPUS, DARPA, DSAA, TRIMIS, USCMA, OEA, WHS, AND THE DEFENSE AGENCIES (LISTED IN TABLE 3).

TABLE 2

DEPARTMENT OF DEFENSE  
TRENDS IN CIVILIAN EMPLOYMENT  
SUBJECT TO OMB CEILING

DEPARTMENT AND FUNCTION	SEP 30, 78	SEP 30, 79	SEP 30, 80	SEP 30, 81	OCT 31, 81	NOV 30, 81
<u>MILITARY FUNCTIONS</u>	<u>1,016,751</u>	<u>991,081</u>	<u>990,356</u>	<u>1,019,466</u>	<u>1,034,431</u>	<u>1,042,092</u>
DIRECT HIRE A/	935,703	915,764	915,786	939,942	954,095	961,105
INDIRECT HIRE B/	81,048	75,317	74,570	79,524	80,336	80,987
ARMY	371,369	359,121	360,508	372,111	374,661	378,019
DIRECT HIRE	316,078	309,475	311,795	318,278	319,906	322,815
INDIRECT HIRE	55,291	49,646	48,713	53,833	54,755	55,204
NAVY	316,796	310,176	308,715	320,858	330,868	333,139
DIRECT HIRE	306,420	299,449	297,984	310,123	320,280	322,339
INDIRECT HIRE	10,376	10,727	10,731	10,735	10,588	10,800
AIR FORCE	251,091	245,082	244,342	246,165	248,321	249,949
DIRECT HIRE	237,024	231,838	230,938	232,933	235,096	236,732
INDIRECT HIRE	14,067	13,244	13,404	13,232	13,225	13,217
OTHER DEFENSE ACTIVITIES	77,495	76,702	76,791	80,332	80,581	80,985
DIRECT HIRE	76,181	75,002	75,069	78,608	78,813	79,219
INDIRECT HIRE	1,314	1,700	1,722	1,724	1,768	1,766
<u>CIVIL FUNCTIONS (ALL DIRECT HIRE) A/</u>	<u>33,590</u>	<u>33,342</u>	<u>32,611</u>	<u>31,800</u>	<u>31,832</u>	<u>31,972</u>
ARMY	33,586	33,336	32,608	31,796	31,828	31,968
AIR FORCE	4	6	3	4	4	4
<u>TOTAL MILITARY AND CIVIL FUNCTIONS</u>	<u>1,050,341</u>	<u>1,024,423</u>	<u>1,022,967</u>	<u>1,051,266</u>	<u>1,066,263</u>	<u>1,074,064</u>
DIRECT HIRE A/	969,293	949,106	948,397	971,742	985,927	993,077
INDIRECT HIRE B/	81,048	75,317	74,570	79,524	80,336	80,987

A/ AS REPORTED OFFICIALLY TO THE OFFICE OF PERSONNEL MANAGEMENT ON LINE 29 OF SF 113-A. EXCLUDES EMPLOYEES EXEMPT FROM THE PRESIDENT'S CEILING CONTROL.

B/ FOREIGN NATIONALS SUPPORTING U.S. MILITARY FORCES OVERSEAS UNDER CONTRACTS OR AGREEMENTS WITH FOREIGN GOVERNMENTS. ALL INDIRECT HIRES SUPPORT MILITARY FUNCTIONS.

TABLE 3

DEPARTMENT OF DEFENSE  
DIRECT HIRE CIVILIAN EMPLOYMENT  
SUBJECT TO OMB CEILING A/

COMPONENT	TOTAL EMPLOYMENT			FULL-TIME W/ PERMANENT APPOINTMENTS		
	OCT 31, 81	NOV 30, 81	SEP 30, 82 B/ CEILING	OCT 31, 81	NOV 30, 81	SEP 30, 82 B/ CEILING
<u>MILITARY FUNCTIONS</u>	<u>954,095</u>	<u>961,105</u>		<u>861,115</u>	<u>875,590</u>	
ARMY	319,906	322,815		279,513	290,788	
NAVY	320,280	322,339		287,575	289,296	
AIR FORCE	235,096	236,732		220,356	221,466	
OSD & RELATED ACTIVITIES C/ DEFENSE AUDIOVISUAL AGENCY	2,480	2,489		2,239	2,245	
DEFENSE AUDIT SERVICE	466	466		443	443	
DEFENSE COMMUNICATIONS AGENCY	384	371		379	366	
DEFENSE CONTRACT AUDIT AGENCY	1,619	1,634		1,568	1,582	
DEFENSE INTELLIGENCE AGENCY	3,548	3,561		3,511	3,522	
	2,646	2,664		2,390	2,406	
DEFENSE INVESTIGATIVE SERVICE	2,464	2,557		2,432	2,517	
DEFENSE LOGISTICS AGENCY	46,111	46,174		44,427	44,518	
DEFENSE MAPPING AGENCY	8,404	8,456		8,231	8,291	
DEFENSE NUCLEAR AGENCY	617	623		582	588	
DEPARTMENT OF DEFENSE DEPENDENTS SCHOOLS	9,457	9,583		6,995	7,064	
UNIFORM SERVICES UNIVERSITY OF THE HEALTH SCIENCES	617	641		474	498	
<u>CIVIL FUNCTIONS</u>	<u>31,832</u>	<u>31,972</u>		<u>29,447</u>	<u>29,409</u>	
ARMY	31,828	31,968		29,443	29,405	
AIR FORCE	4	4		4	4	
<u>TOTAL MILITARY AND CIVIL FUNCTIONS</u>	<u>985,927</u>	<u>993,077</u>		<u>890,562</u>	<u>904,999</u>	

A/ AS REPORTED OFFICIALLY TO THE OFFICE OF PERSONNEL MANAGEMENT ON LINE 29 OF SF 113-A.

B/ NOT AVAILABLE UNTIL DECEMBER 1981.

C/ INCLUDES OSD-JCS, AFIS, CHAMPUS, DARPA, DSAA, TRIMIS, USCSMA, OEA, AND WHS.

TABLE 4

DEPARTMENT OF DEFENSE  
CIVILIAN AND MILITARY PERSONNEL  
OSD-JCS AND OTHER DEFENSE ACTIVITIES

NOVEMBER 30, 1981

COMPONENT	TOTAL	A/ CIVILIAN	TOTAL	MILITARY	
				OFFICER	ENLISTED
<u>TOTALS</u>	<u>87,555</u>	<u>80,254</u>	<u>7,301</u>	<u>4,315</u>	<u>2,986</u>
OSD & RELATED ACTIVITIES <u>B/</u>	4,263	2,511	1,752	1,234	518
DEFENSE AUDIOVISUAL AGENCY	588	466	122	17	105
DEFENSE AUDIT SERVICE	371	371	-	-	-
DEFENSE COMMUNICATIONS AGENCY	3,159	1,673	1,486	457	1,029
DEFENSE CONTRACT AUDIT AGENCY	3,586	3,586	-	-	-
DEFENSE INTELLIGENCE AGENCY	4,484	2,664	1,820	1,188	632
DEFENSE INVESTIGATIVE SERVICE	2,730	2,590	140	72	68
DEFENSE LOGISTICS AGENCY	47,950	46,983	967	808	159
DEFENSE MAPPING AGENCY	8,981	8,544	437	183	254
DEFENSE NUCLEAR AGENCY	1,127	642	485	300	185
DEPARTMENT OF DEFENSE DEPENDENTS SCHOOLS	9,583	9,583	-	-	-
UNIFORMED SERVICES UNIVERSITY OF THE HEALTH SCIENCES	733	641	92 <u>C/</u>	56	36

A/ INCLUDES TOTAL PAID DIRECT HIRE CIVILIAN EMPLOYMENT AS REPORTED ON LINE 1 OF SF 113-A.

B/ INCLUDES OSD-JCS, AFIS, CHAMPUS, DARPA, DSA, TRIMIS, USCSMA, OEA, AND WHS.

C/ EXCLUDES STUDENTS.

TABLE 5

DEPARTMENT OF DEFENSE  
TOTAL PAID CIVILIAN EMPLOYMENT BY CATEGORY

NOVEMBER 30, 1981

TYPE PERSONNEL	TOTAL DEPT OF DEFENSE	ARMY	NAVY	AIR FORCE	OTHER DEFENSE ACTIVITIES
<u>WORLDWIDE TOTAL</u>	<u>1,086,670</u>	<u>414,417</u>	<u>338,201</u>	<u>252,032</u>	<u>82,020</u>
<u>DIRECT HIRE A/</u>	<u>1,005,683</u>	<u>359,213</u>	<u>327,401</u>	<u>238,815</u>	<u>80,254</u>
BY FULL-TIME & PART-TIME:					
FULL-TIME	980,908	348,822	320,549	234,238	77,299
PART-TIME & INTERMITTENT	24,775	10,391	6,852	4,577	2,955
BY CITIZENSHIP:					
U.S. CITIZENS B/ FOREIGN NATIONALS	966,986 38,697	342,968 16,245	312,513 14,888	231,898 6,917	79,607 647
BY SALARIED & WAGE BOARD:					
SALARIED	641,092	241,610	180,563	150,315	68,604
WAGE BOARD	364,591	117,603	146,838	88,500	11,650
<u>INDIRECT HIRE C/</u>	<u>80,987</u>	<u>55,204</u>	<u>10,800</u>	<u>13,217</u>	<u>1,766</u>
<u>TOTAL U.S. CITIZENS</u>	<u>966,986</u>	<u>342,968</u>	<u>312,513</u>	<u>231,898</u>	<u>79,607</u>
<u>TOTAL FOREIGN NATIONALS</u>	<u>119,684</u>	<u>71,449</u>	<u>25,688</u>	<u>20,134</u>	<u>2,413</u>

A/ AS REPORTED TO THE OFFICE OF PERSONNEL MANAGEMENT ON LINE 1 OF SF 113-A.

R/ INCLUDES U.S. CITIZENS BY VIRTUE OF CITIZENSHIP IN A U.S. TERRITORY.

C/ FOREIGN NATIONALS SUPPORTING U.S. MILITARY IN OVERSEAS AREAS UNDER CONTRACTS/AGREEMENTS WITH FOREIGN GOVERNMENTS.

TABLE 6

DEPARTMENT OF DEFENSE  
TOTAL PAID CIVILIAN EMPLOYMENT BY LOCATION

NOVEMBER 30, 1981

TYPE PERSONNEL	TOTAL DEPT OF DEFENSE	ARMY	NAVY	AIR FORCE	OTHER DEFENSE ACTIVITIES
<u>WORLDWIDE TOTAL</u>	<u>1,086,670</u>	<u>414,417</u>	<u>338,201</u>	<u>252,032</u>	<u>82,020</u>
<u>UNITED STATES (DIRECT HIRE)</u>	<u>921,578</u>	<u>320,668</u>	<u>305,336</u>	<u>225,833</u>	<u>69,741</u>
BY LOCATION:					
WASHINGTON, D.C.	81,494	25,995	35,342	6,340	13,817
REMAINDER OF U.S. A/	840,084	294,673	269,994	219,493	55,924
BY SALARIED & WAGE BOARD:					
SALARIED	592,378	224,018	171,274	138,911	58,175
WAGE BOARD	329,200	96,650	134,062	86,922	11,566
<u>U.S. TERRITORIES (DIRECT HIRE)</u>	<u>6,419</u>	<u>1,051</u>	<u>4,408</u>	<u>917</u>	<u>43</u>
BY CITIZENSHIP:					
U.S. CITIZENS B/	6,350	1,050	4,341	916	43
FOREIGN NATIONALS	69	1	67	1	0
BY SALARIED & WAGE BOARD:					
SALARIED	2,856	687	1,751	386	32
WAGE BOARD	3,563	364	2,657	531	11
<u>FOREIGN COUNTRIES</u>	<u>158,673</u>	<u>92,698</u>	<u>28,457</u>	<u>25,282</u>	<u>12,236</u>
<u>DIRECT HIRE</u>	<u>77,686</u>	<u>37,494</u>	<u>17,657</u>	<u>12,065</u>	<u>10,470</u>
BY CITIZENSHIP:					
U.S. CITIZENS B/	39,522	21,593	2,899	5,182	9,848
FOREIGN NATIONALS	38,164	15,901	14,758	6,883	622
BY SALARIED & WAGE BOARD:					
SALARIED	45,858	16,905	7,538	11,018	10,397
WAGE BOARD	31,828	20,589	10,119	1,047	73
<u>INDIRECT HIRE (FOREIGN NATIONALS)</u>	<u>80,987</u>	<u>55,204</u>	<u>10,800</u>	<u>13,217</u>	<u>1,766</u>

A/ INCLUDES ALASKA AND HAWAII

B/ INCLUDES U.S. CITIZENS BY VIRTUE OF CITIZENSHIP IN A U.S. TERRITORY

TABLE 7

DEPARTMENT OF DEFENSE  
INDIRECT HIRE PERSONNEL BY COUNTRY

NOVEMBER 30, 1981

COUNTRY	TOTAL	ARMY	NAVY	AIR FORCE	OTHER DEFENSE ACTIVITIES
<u>TOTAL</u>	<u>80,987</u>	<u>55,204</u>	<u>10,800</u>	<u>13,217</u>	<u>1,766</u>
BELGIUM	525	507	-	2	16
GERMANY	55,161	47,846	30	6,022	1,263
GREECE	580	15	115	431	19
GUAM	4	-	4	-	-
ITALY	1	-	1	-	-
JAPAN (INCLUDES OKINAWA)	17,889	3,474	9,428	4,728	259
KOREA	3,091	3,091	-	-	-
NETHERLANDS	354	271	-	70	13
PHILIPPINES	7	-	6	-	1
SPAIN	2,051	-	1,149	815	87
UNITED KINGDOM	1,324	-	67	1,149	108

INDIRECT HIRE PERSONNEL ARE FOREIGN NATIONALS SUPPORTING U.S. MILITARY FORCES UNDER CONTRACTS OR AGREEMENTS WITH FOREIGN GOVERNMENTS.

TABLE 8

DEPARTMENT OF DEFENSE  
MONTHLY ACCESSIONS AND SEPARATIONS OF DIRECT HIRE CIVILIAN EMPLOYEES

DATE	ACCESSIONS		SEPARATIONS	
	NUMBER	RATE	NUMBER	RATE
1980				
JANUARY	15,754	1.63	19,744	2.05
FEBRUARY	12,841	1.33	12,958	1.34
MARCH	17,794	1.84	15,575	1.61
APRIL	15,226	1.57	12,488	1.29
MAY	18,584	1.91	13,311	1.37
JUNE	35,078	3.55	22,012	2.23
JULY	16,997	1.72	15,140	1.53
AUGUST	19,622	2.02	34,671	3.56
SEPTEMBER	25,301	2.64	38,376	4.00
OCTOBER	23,733	2.45	13,652	1.41
NOVEMBER	12,973	1.34	11,312	1.16
DECEMBER	12,508	1.29	10,351	1.06
1981				
JANUARY	18,714	1.92	19,917	2.05
FEBRUARY	7,734	0.80	9,983	1.03
MARCH	12,348	1.27	9,596	0.98
APRIL	14,992	1.53	9,681	0.99
MAY	21,570	2.18	11,490	1.16
JUNE	39,402	3.91	20,928	2.08
JULY	24,016	2.35	15,497	1.52
AUGUST	23,514	2.31	30,080	2.96
SEPTEMBER	18,071	1.84	47,292	4.81
OCTOBER	25,157	2.52	11,373	1.14
NOVEMBER	15,942	1.59	9,256	0.92

TABLE 9  
DEPARTMENT OF DEFENSE  
MONTHLY SEPARATIONS OF DIRECT HIRE CIVILIAN EMPLOYEES BY CAUSE

DATE	TOTAL	QUIT	RIF	TERMINATION A/	OTHER B/
1980					
JANUARY	19,744	5,239	152	2,134	12,219
FEBRUARY	12,958	4,247	82	1,441	7,188
MARCH	15,575	4,642	101	1,862	8,970
APRIL	12,488	4,597	87	2,032	5,772
MAY	13,311	5,087	73	2,537	5,614
JUNE	22,012	5,864	121	2,739	13,288
JULY	15,140	6,165	151	2,707	6,117
AUGUST	34,671	15,070	144	7,226	12,231
SEPTEMBER	38,376	13,502	243	14,302	10,329
OCTOBER	13,652	4,812	117	3,967	4,756
NOVEMBER	11,312	3,952	65	2,470	4,825
DECEMBER	10,351	2,985	69	1,858	5,439
1981					
JANUARY	19,917	5,123	169	2,263	12,362
FEBRUARY	9,983	3,896	63	1,314	4,710
MARCH	9,596	3,460	38	1,708	4,390
APRIL	9,681	3,953	45	1,556	4,127
MAY	11,490	4,965	95	1,432	4,998
JUNE	20,928	5,915	104	2,367	12,542
JULY	15,497	7,174	342	2,228	5,753
AUGUST	30,080	15,798	37	7,233	7,012
SEPTEMBER	47,292	16,428	110	21,587	9,167
OCTOBER	11,373	4,070	190	3,257	3,856
NOVEMBER	9,256	3,681	51	1,764	3,760

A/ TERMINATIONS OF TEMPORARY OR EXCEPTED APPOINTMENTS OR OF PERSONAL SERVICE CONTRACTS.  
B/ INCLUDES TRANSFERS, DISCHARGES, DISPLACEMENTS, EXTENDED LWOP AND SUSPENSIONS, DEATHS, DISABILITIES AND RETIREMENTS.

