

AD-A151 136

CIVILIAN MANPOWER STATISTICS, DECEMBER, FY-82. (U)
WASHINGTON HEADQUARTERS SERVICE (DOD) DIR FOR INFO
OP & RPTS. DEC 81. DIOR/MO4-82/03

1/1

UNCLASSIFIED

F/G 5/9

N/L

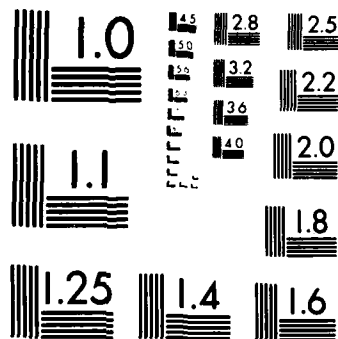
1 OF 1
AD-A151 136



END
FILMED
11 04 85

1 OF 1

AD-A151 136



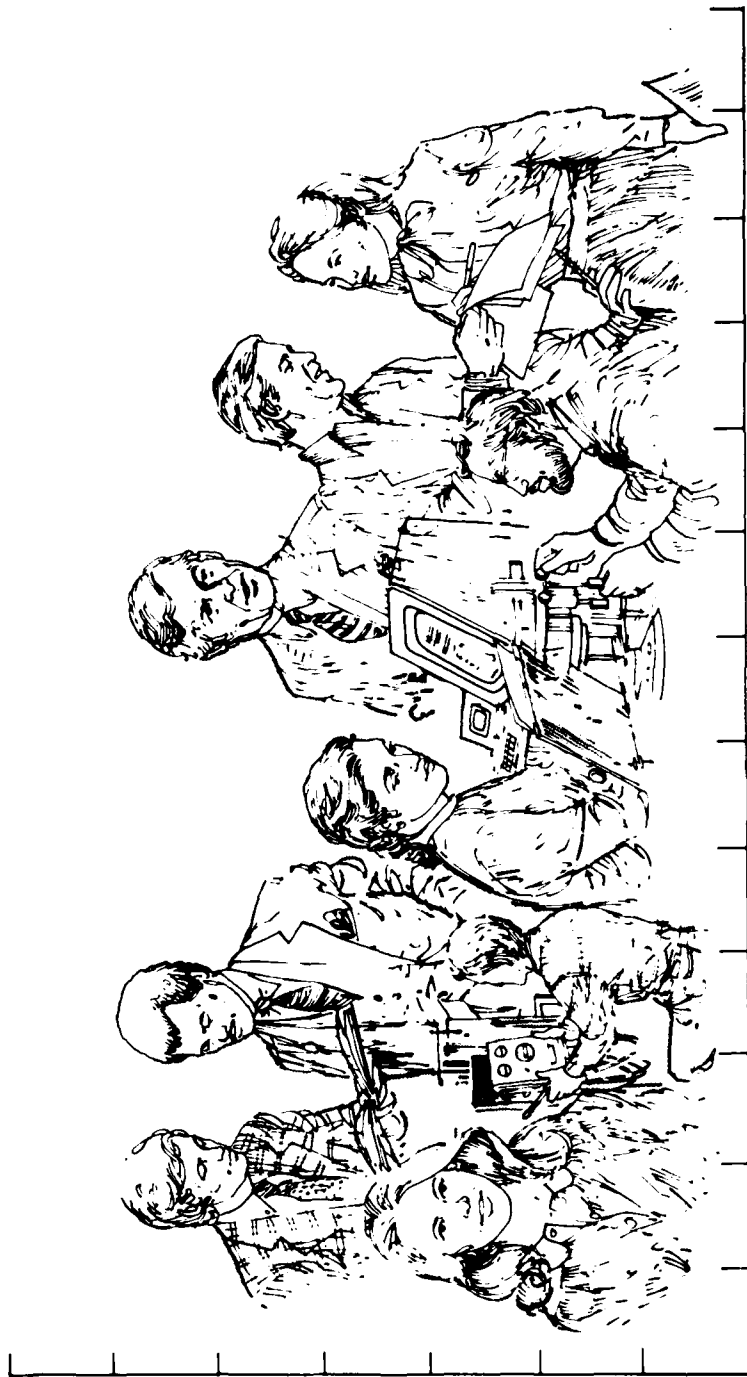
MICROCOPY RESOLUTION TEST CHART
NATIONAL BUREAU OF STANDARDS-1963-A

**THIS REPORT IS UNCLASSIFIED AND
ITS DISTRIBUTION IS UNLIMITED**

Department of Defense

CIVILIAN MANPOWER STATISTICS

DECEMBER 1981

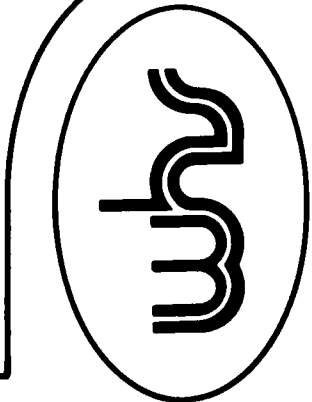
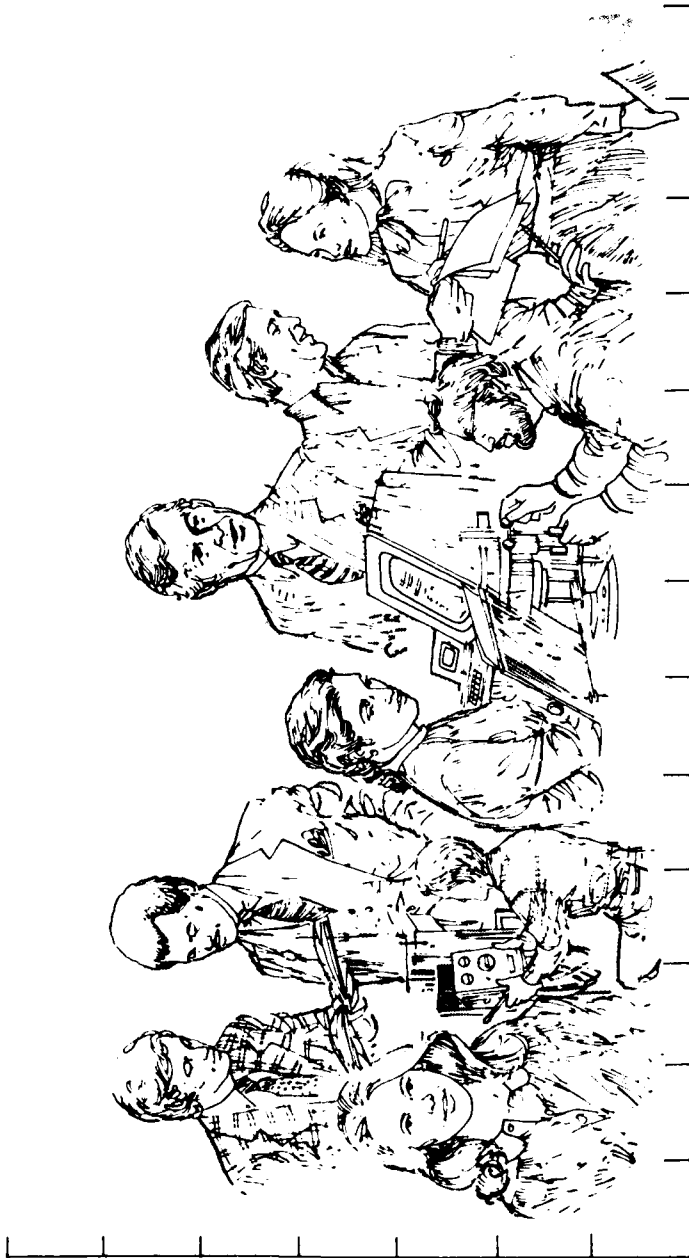




OSD

WASHINGTON HEADQUARTERS SERVICES

Department of Defense
CIVILIAN MANPOWER STATISTICS



DIRECTORATE FOR INFORMATION
OPERATIONS AND REPORTS (DIOR)
THE PENTAGON, WASHINGTON, D.C.

F O R E W O R D

CIVILIAN MANPOWER STATISTICS (CMS) is a monthly publication of Washington Headquarters Services, Directorate for Information Operations and Reports (WHS/DIOR) of the Office of the Secretary of Defense.

CMS provides audited, statistical information on the entire civilian workforce of the Department of Defense with the exception of personnel of the National Security Agency and personnel paid from non-appropriated funds. It is produced primarily from a computerized data base developed and maintained by WHS/DIOR from monthly information provided to the Office of Personnel Management on SF 113-A, Monthly Report of Federal Civilian Employment.

Questions on material in this publication and requests for additional copies or changes in distribution should be addressed to the Director, Washington Headquarters Services, Room 3E843, The Pentagon, Washington, D.C. 20301.

T A B L E O F C O N T E N T S

<u>Table Number</u>	<u>Former Designation</u>	<u>Title</u>	<u>PAGE</u>
		Glossary	1
Table 1	P10 (Rev.)	Department of Defense - Civilian Employment Summary	2
Table 2	P30.11 (Rev.)	Department of Defense - Trends in Civilian Employment Subject to OMB Ceiling	3
Table 3	P30.10	Department of Defense - Direct Hire Civilian Employment Subject to OMB Ceiling	4
Table 4	P12.2	Department of Defense - Civilian and Military Personnel--OSD-JCS and Other Defense Activities	5
Table 5	P31.0	Department of Defense - Total Paid Civilian Employment by Category	6
Table 6	P32.0	Department of Defense - Total Paid Civilian Employment by Location	7
Table 7	P32.6	Department of Defense - Indirect Hire Personnel by Country	8
Table 8	P33.1	Department of Defense - Monthly Accessions and Separations of Direct Hire Civilian Employees	9
Table 9	P33.2	Department of Defense - Monthly Separations of Direct Hire Civilian Employees by Cause	10

GLOSSARY

Military Functions. Activities normally associated with the uniform services.

Civil Functions. Functions primarily associated with the Civil Works program of the Army Corps of Engineers. This program encompasses planning, programming, designing, constructing, and operating Federal water resource projects for navigation, flood control, hydroelectric power, water supply, recreation, and related activities. Civil Functions also includes cemeterial workers (Army) and several conservation management employees (Air Force).

Direct Hire Civilians. Employees hired directly by an agency of the Department of Defense. Included are foreign nationals hired by the Department of Defense to support DoD activities in their home countries.

Indirect Hire Civilians. Foreign nationals assigned to support U.S. forces through contracts or agreements with foreign governments (or agencies thereof). These personnel are employees of the foreign governments involved.

Total Paid Civilian Employment. Total direct and indirect hire civilian employment. For direct hire, includes, with some exceptions, all direct hire employees who had not officially separated as of the report date and who either worked during the reporting period or were on paid leave.

OMB Ceiling Employment. Employees subject to Office of Management and Budget (OMB) ceilings established to administer Presidential employment ceiling limitations. For direct hire employees, it excludes employees such as Summer Aids or in the Stay-in-School, Federal Junior Fellowship, and Worker-Trainee Opportunity Programs, and those who are covered by other official exemptions granted by OMB.

Agencies.

OSD-JCS = Office of the Secretary of Defense and Organization of the
 Joint Chiefs of Staff
AFIS = Armed Forces Information Service
CHAMPUS = Civilian Health and Medical Program of the Uniform Services
DARPA = Defense Advanced Research Projects Agency
DSAA = Defense Security Assistance Agency
TRIMIS = Tri-Service Medical Information System
USCMA = U.S. Court of Military Appeals
OEA = Office of Economic Adjustment
WHS = Washington Headquarters Services

TABLE 1
DEPARTMENT OF DEFENSE
CIVILIAN EMPLOYMENT SUMMARY

DECEMBER 31, 1981

CIVILIAN EMPLOYMENT A/ MILITARY FUNCTIONS	TOTAL DOD	ARMY	B/ NAVY	AIR FORCE	OTHER DEFENSE AGENCIES C/D/
OMB CEILING EMPLOYMENT	1,045,608	379,652	334,058	250,658	81,240
DIRECT HIRE	964,586	324,414	323,262	237,434	79,476
INDIRECT HIRE	81,022	55,238	10,796	13,224	1,764
TOTAL EMPLOYMENT	1,057,761	383,210	339,234	253,014	82,303
DIRECT HIRE	976,739	327,972	328,438	239,790	80,539
INDIRECT HIRE	81,022	55,238	10,796	13,224	1,764
<u>CIVIL FUNCTIONS (ALL DIRECT HIRE)</u>					
OMB CEILING EMPLOYMENT	31,309	31,305	0	4	0
TOTAL EMPLOYMENT	32,324	32,320	0	4	0
<u>TOTAL MILITARY AND CIVIL FUNCTIONS</u>					
OMB CEILING EMPLOYMENT	1,076,917	410,957	334,058	250,662	81,240
DIRECT HIRE	995,895	355,719	323,262	237,438	79,476
INDIRECT HIRE	81,022	55,238	10,796	13,224	1,764
TOTAL EMPLOYMENT	1,090,085	415,530	339,234	253,018	82,303
DIRECT HIRE	1,009,063	360,292	328,438	239,794	80,539
INDIRECT HIRE	81,022	55,238	10,796	13,224	1,764

A/ INCLUDED IN TOTAL EMPLOYMENT AND EXCLUDED FROM OMB CEILING EMPLOYMENT ARE EMPLOYEES EXEMPT FROM OFFICE OF MANAGEMENT AND BUDGET (OMB) CEILING CONTROL, I.E. SUMMER AIDS AND EMPLOYEES IN THE STAY-IN-SCHOOL, FEDERAL JUNIOR FELLOWSHIP, AND WORKER-TRAINEE OPPORTUNITY PROGRAMS, AND THOSE COVERED BY OTHER OFFICIAL EXEMPTIONS GRANTED BY OMB.

B/ INCLUDES MARINE CORPS CIVILIAN PERSONNEL.

C/ INCLUDES OSD, JCS, AFIS, CHAMPIUS, DARPA, DSAA, TRIMIS, USCSMA, OEA, WHS, AND THE DEFENSE AGENCIES (LISTED IN TABLE 3).

D/ DODDS INFORMATION CONTAINS DIRECT AND INDIRECT HIRE FOREIGN NATIONAL DATA AS OF NOVEMBER 30, 1981.

TABLE 2

DEPARTMENT OF DEFENSE
TRENDS IN CIVILIAN EMPLOYMENT
SUBJECT TO OMB CEILING

DEPARTMENT AND FUNCTION	SEP 30, 78	SEP 30, 79	SEP 30, 80	SEP 30, 81	NOV 30, 81	DEC 31, 81
<u>MILITARY FUNCTIONS</u>	<u>1,016,751</u>	<u>991,081</u>	<u>990,356</u>	<u>1,019,466</u>	<u>1,042,092</u>	<u>1,045,608</u>
DIRECT HIRE A/	935,703	915,764	915,786	939,942	961,105	964,586
INDIRECT HIRE B/	81,048	75,317	74,570	79,524	80,987	81,022
ARMY	371,369	359,121	360,508	372,111	378,019	379,652
DIRECT HIRE	316,078	309,475	311,795	318,278	322,815	324,414
INDIRECT HIRE	55,291	49,646	48,713	53,833	55,204	55,238
NAVY	316,796	310,176	308,715	320,858	333,139	334,058
DIRECT HIRE	306,420	299,449	297,984	310,123	322,339	323,262
INDIRECT HIRE	10,376	10,727	10,731	10,735	10,800	10,796
AIR FORCE	251,091	245,082	244,342	246,165	249,949	250,658
DIRECT HIRE	237,024	231,838	230,938	232,933	236,732	237,434
INDIRECT HIRE	14,067	13,244	13,404	13,232	13,217	13,224
OTHER DEFENSE ACTIVITIES	77,495	76,702	76,791	80,332	80,985	81,240 C/
DIRECT HIRE	76,181	75,002	75,069	78,608	79,219	79,476
INDIRECT HIRE	1,314	1,700	1,722	1,724	1,766	1,764
<u>CIVIL FUNCTIONS (ALL DIRECT HIRE) A/</u>	<u>33,590</u>	<u>33,342</u>	<u>32,611</u>	<u>31,800</u>	<u>31,972</u>	<u>31,309</u>
ARMY	33,586	33,336	32,608	31,796	31,968	31,305
AIR FORCE	4	6	3	4	4	4
<u>TOTAL MILITARY AND CIVIL FUNCTIONS</u>	<u>1,050,341</u>	<u>1,024,423</u>	<u>1,022,967</u>	<u>1,051,266</u>	<u>1,074,064</u>	<u>1,076,917</u>
DIRECT HIRE A/	969,293	949,106	948,397	971,742	993,077	995,895
INDIRECT HIRE B/	81,048	75,317	74,570	79,524	80,987	81,022

A/ AS REPORTED OFFICIALLY TO THE OFFICE OF PERSONNEL MANAGEMENT ON LINE 29 OF SF 113-A. EXCLUDES EMPLOYEES EXEMPT FROM THE PRESIDENT'S CEILING CONTROL.

B/ FOREIGN NATIONALS SUPPORTING U.S. MILITARY FORCES OVERSEAS UNDER CONTRACTS OR AGREEMENTS WITH FOREIGN GOVERNMENTS. ALL INDIRECT HIRES SUPPORT MILITARY FUNCTIONS.

C/ DODDS INFORMATION CONTAINS DIRECT AND INDIRECT HIRE FOREIGN NATIONAL DATA AS OF NOVEMBER 30, 1981.

TABLE 3

DEPARTMENT OF DEFENSE
DIRECT HIRE CIVILIAN EMPLOYMENT
SUBJECT TO OMB CEILING A/

COMPONENT	TOTAL EMPLOYMENT		FULL-TIME W/ PERMANENT APPOINTMENTS		CEILING
	NOV 30, 81	DEC 31, 81	NOV 30, 81	DEC 31, 81	SEP 30, 82 B/
<u>MILITARY FUNCTIONS</u>	<u>961,105</u>	<u>964,586</u>	<u>875,590</u>	<u>878,023</u>	
ARMY	322,815	324,414	290,788	292,439	
NAVY	322,339	323,262	289,296	289,693	
AIR FORCE	236,732	237,434	221,466	221,809	
OSD & RELATED ACTIVITIES C/	2,489	2,519	2,245	2,274	
DEFENSE AUDIOVISUAL AGENCY	466	463	443	448	
DEFENSE AUDIT SERVICE	371	409	366	404	
DEFENSE COMMUNICATIONS AGENCY	1,634	1,647	1,582	1,593	
DEFENSE CONTRACT AUDIT AGENCY	3,561	3,547	3,522	3,502	
DEFENSE INTELLIGENCE AGENCY	2,664	2,645	2,406	2,393	
DEFENSE INVESTIGATIVE SERVICE	2,557	2,610	2,517	2,571	
DEFENSE LOGISTICS AGENCY	46,174	46,246	44,518	44,610	
DEFENSE MAPPING AGENCY	8,456	8,425	8,291	8,248	
DEFENSE NUCLEAR AGENCY	623	634	588	596	
DEPARTMENT OF DEFENSE	9,583	9,679 D/	7,064	6,942	
DEPENDENTS SCHOOLS					
UNIFORM SERVICES UNIVERSITY					
OF THE HEALTH SCIENCES	641	652	498	501	
<u>CIVIL FUNCTIONS</u>	<u>31,972</u>	<u>31,309</u>	<u>29,409</u>	<u>28,938</u>	
ARMY	31,968	31,305	29,405	28,934	
AIR FORCE	4	4	4	4	
<u>TOTAL MILITARY AND CIVIL FUNCTIONS</u>	<u>993,077</u>	<u>995,895</u>	<u>904,999</u>	<u>906,961</u>	

A/ AS REPORTED OFFICIALLY TO THE OFFICE OF PERSONNEL MANAGEMENT ON LINE 29 OF SF 113-A.
 B/ NOT AVAILABLE UNTIL JANUARY REPORT.
 C/ INCLUDES OSD-JCS, AFIS, CHAMPUS, DARPA, DSAA, TRIMIS, USCSMA, OEA, AND WHS.
 D/ DODDS INFORMATION CONTAINS DIRECT HIRE FOREIGN NATIONAL DATA AS OF NOVEMBER 30, 1981.

TABLE 4

DEPARTMENT OF DEFENSE
CIVILIAN AND MILITARY PERSONNEL
OSD-JCS AND OTHER DEFENSE ACTIVITIES

DECEMBER 31, 1981

COMPONENT	TOTAL	A/ CIVILIAN	TOTAL		ENLISTED
			MILITARY OFFICER		
<u>TOTALS</u>	<u>87,809</u>	<u>80,539</u>	<u>7,270</u>	<u>4,306</u>	<u>2,964</u>
OSD & RELATED ACTIVITIES B/	4,287	2,540	1,747	1,230	517
DEFENSE AUDIOVISUAL AGENCY	581	463	118	18	100
DEFENSE AUDIT SERVICE	410	410	-	-	-
DEFENSE COMMUNICATIONS AGENCY	3,167	1,686	1,481	459	1,022
DEFENSE CONTRACT AUDIT AGENCY	3,571	3,571	-	-	-
DEFENSE INTELLIGENCE AGENCY	4,459	2,645	1,814	1,186	628
DEFENSE INVESTIGATIVE SERVICE	2,784	2,649	135	69	66
DEFENSE LOGISTICS AGENCY	48,053	47,083	970	810	160
DEFENSE MAPPING AGENCY	8,947	8,513	434	181	253
DEFENSE NUCLEAR AGENCY	1,128	648	480	297	183
DEPARTMENT OF DEFENSE DEPENDENTS SCHOOLS D/	9,679	9,679	-	-	-
UNIFORMED SERVICES UNIVERSITY OF THE HEALTH SCIENCES	743	652	91 C/	56	35

A/ INCLUDES TOTAL PAID DIRECT HIRE CIVILIAN EMPLOYMENT AS REPORTED ON LINE 1 OF SF 113-A.

B/ INCLUDES OSD-JCS, AFIS, CHAMPUS, DARPA, DSA, TRIMIS, USCMA, OEA, AND WHS.

C/ EXCLUDES STUDENTS.

D/ DODDS INFORMATION CONTAINS DIRECT HIRE FOREIGN NATIONAL DATA AS OF NOVEMBER 30, 1981.

TABLE 5

DEPARTMENT OF DEFENSE
TOTAL PAID CIVILIAN EMPLOYMENT BY CATEGORY

DECEMBER 31, 1981

TYPE PERSONNEL	TOTAL DEPT OF DEFENSE	ARMY	NAVY	AIR FORCE	OTHER DEFENSE ACTIVITIES D/
<u>WORLDWIDE TOTAL</u>	<u>1,090,085</u>	<u>415,530</u>	<u>339,234</u>	<u>253,018</u>	<u>82,303</u>
<u>DIRECT HIRE A/</u>	<u>1,009,063</u>	<u>360,292</u>	<u>328,438</u>	<u>239,794</u>	<u>80,539</u>
<u> FULL-TIME & PART-TIME:</u>					
<u> FULL-TIME</u>	983,466	349,496	321,580	234,937	77,453
<u> PART-TIME & INTERMITTENT</u>	25,597	10,796	6,858	4,857	3,086
<u> CONTRACT EMPLOYEES:</u>					
<u> U.S. NATIONALS</u>	970,309	344,034	313,498	232,882	79,895
<u> FOREIGN NATIONALS</u>	38,754	16,258	14,940	6,912	644
<u> SALARIED & WAGE BOARD:</u>					
<u> SALARIED</u>	644,270	243,153	181,294	150,875	68,948
<u> WAGE BOARD</u>	364,793	117,139	147,144	88,919	11,591
<u>INDIRECT HIRE C/</u>	<u>81,022</u>	<u>55,238</u>	<u>10,796</u>	<u>13,224</u>	<u>1,764</u>
<u>TOTAL U.S. CITIZENS</u>	<u>970,309</u>	<u>344,034</u>	<u>313,498</u>	<u>232,882</u>	<u>79,895</u>
<u>TOTAL FOREIGN NATIONALS</u>	<u>119,776</u>	<u>71,496</u>	<u>25,736</u>	<u>20,136</u>	<u>2,409</u>

A/ AS REPORTED TO THE OFFICE OF PERSONNEL MANAGEMENT ON LINE 1 OF SF 113-A.

B/ INCLUDES U.S. CITIZENS BY VIRTUE OF CITIZENSHIP IN A U.S. TERRITORY.

C/ FOREIGN NATIONALS SUPPORTING U.S. MILITARY IN OVERSEAS AREAS UNDER CONTRACTS/AGREEMENTS WITH FOREIGN GOVERNMENTS.

D/ DODDS INFORMATION CONTAINS DIRECT AND INDIRECT HIRE FOREIGN NATIONAL DATA AS OF NOVEMBER 30, 1981.

TABLE 6
 DEPARTMENT OF DEFENSE
 TOTAL PAID CIVILIAN EMPLOYMENT BY LOCATION
 DECEMBER 31, 1981

TYPE PERSONNEL	TOTAL DEPT OF DEFENSE	ARMY	NAVY	AIR FORCE	OTHER DEFENSE ACTIVITIES C/
<u>WORLDWIDE TOTAL</u>	<u>1,090,085</u>	<u>415,530</u>	<u>339,234</u>	<u>253,018</u>	<u>82,303</u>
<u>UNITED STATES (DIRECT HIRE)</u>	<u>924,420</u>	<u>321,480</u>	<u>306,228</u>	<u>226,791</u>	<u>69,921</u>
BY LOCATION:					
WASHINGTON, D.C.	82,215	26,323	35,475	6,476	13,941
REMAINDER OF U.S. A/	842,205	295,157	270,753	220,315	55,980
BY SALARIED & WAGE BOARD:					
SALARIED	595,142	225,377	171,912	139,438	58,415
WAGE BOARD	329,278	96,103	134,316	87,353	11,506
<u>U.S. TERRITORIES (DIRECT HIRE)</u>	<u>6,503</u>	<u>1,051</u>	<u>4,486</u>	<u>922</u>	<u>44</u>
BY CITIZENSHIP:					
U.S. CITIZENS B/ FOREIGN NATIONALS	6,419 84	1,050 1	4,404 82	921 1	44 -
BY SALARIED & WAGE BOARD:					
SALARIED	2,916	692	1,795	396	33
WAGE BOARD	3,587	359	2,691	526	11
<u>FOREIGN COUNTRIES</u>	<u>159,162</u>	<u>92,999</u>	<u>28,520</u>	<u>25,305</u>	<u>12,338</u>
<u>DIRECT HIRE</u>	<u>78,140</u>	<u>37,761</u>	<u>17,724</u>	<u>12,081</u>	<u>10,574</u>
BY CITIZENSHIP:					
U.S. CITIZENS B/ FOREIGN NATIONALS	39,950 38,190	21,863 15,898	2,928 14,796	5,205 6,876	9,954 620
BY SALARIED & WAGE BOARD:					
SALARIED	46,212	17,084	7,587	11,041	10,500
WAGE BOARD	31,928	20,677	10,137	1,040	74
<u>INDIRECT HIRE (FOREIGN NATIONALS)</u>	<u>81,022</u>	<u>55,238</u>	<u>10,796</u>	<u>13,224</u>	<u>1,764</u>

A/ INCLUDES ALASKA AND HAWAII
 B/ INCLUDES U.S. CITIZENS BY VIRTUE OF CITIZENSHIP IN A U.S. TERRITORY
 C/ THIS INFORMATION CONTAINS DIRECT AND INDIRECT HIRE FOREIGN NATIONAL DATA AS OF
 NOVEMBER 30, 1981.

TABLE 7

DEPARTMENT OF DEFENSE
INDIRECT HIRE PERSONNEL BY COUNTRY A/

DECEMBER 31, 1981

COUNTRY	TOTAL	ARMY	NAVY	AIR FORCE	OTHER DEFENSE ACTIVITIES B/
<u>TOTAL</u>	<u>81,022</u>	<u>55,238</u>	<u>10,796</u>	<u>13,224</u>	<u>1,764</u>
BELGIUM	533	515	-	2	16
GERMANY	55,132	47,807	30	6,031	1,264
GREECE	580	15	115	431	19
GUAM	4	-	4	-	-
ITALY	1	-	1	-	-
JAPAN (INCLUDES OKINAWA)	17,874	3,459	9,429	4,728	258
KOREA	3,158	3,158	-	-	-
NETHERLANDS	366	284	-	69	13
PHILIPPINES	7	-	6	-	1
SPAIN	2,048	-	1,143	817	88
UNITED KINGDOM	1,319	-	68	1,146	105

A/ INDIRECT HIRE PERSONNEL ARE FOREIGN NATIONALS SUPPORTING U.S. MILITARY FORCES UNDER CONTRACTS OR AGREEMENTS WITH FOREIGN GOVERNMENTS.

B/ DODDS INFORMATION CONTAINS INDIRECT HIRE FOREIGN NATIONAL DATA AS OF NOVEMBER 30, 1981.

TABLE 8
 DEPARTMENT OF DEFENSE
 MONTHLY ACCESSIONS AND SEPARATIONS OF DIRECT HIRE CIVILIAN EMPLOYEES

DATE	ACCESSIONS		SEPARATIONS	
	NUMBER	RATE	NUMBER	RATE
1980				
JANUARY	15,754	1.63	19,744	2.05
FEBRUARY	12,841	1.33	12,958	1.34
MARCH	17,794	1.84	15,575	1.61
APRIL	15,226	1.57	12,488	1.29
MAY	18,584	1.91	13,311	1.37
JUNE	35,078	3.55	22,012	2.23
JULY	16,997	1.72	15,140	1.53
AUGUST	19,622	2.02	34,671	3.56
SEPTEMBER	25,301	2.64	38,376	4.00
OCTOBER	23,733	2.45	13,652	1.41
NOVEMBER	12,973	1.34	11,312	1.16
DECEMBER	12,508	1.29	10,351	1.06
1981				
JANUARY	18,714	1.92	19,917	2.05
FEBRUARY	7,734	0.80	9,983	1.03
MARCH	12,348	1.27	9,596	0.98
APRIL	14,992	1.53	9,681	0.99
MAY	21,570	2.18	11,490	1.16
JUNE	39,402	3.91	20,928	2.08
JULY	24,016	2.35	15,497	1.52
AUGUST	23,514	2.31	30,080	2.96
SEPTEMBER	18,071	1.84	47,292	4.81
OCTOBER	25,157	2.52	11,373	1.14
NOVEMBER	15,942	1.59	9,256	0.92
DECEMBER	14,806	1.47	11,772	1.17

TABLE 9
DEPARTMENT OF DEFENSE
MONTHLY SEPARATIONS OF DIRECT HIRE CIVILIAN EMPLOYEES BY CAUSE

DATE	TOTAL	QUIT	RIF	TERMINATION A/	OTHER B/
1980					
JANUARY	19,744	5,239	152	2,134	12,219
FEBRUARY	12,958	4,247	82	1,441	7,188
MARCH	15,575	4,642	101	1,862	8,970
APRIL	12,488	4,597	87	2,032	5,772
MAY	13,311	5,087	73	2,537	5,614
JUNE	22,012	5,864	121	2,739	13,288
JULY	15,140	6,165	151	2,707	6,117
AUGUST	34,671	15,070	144	7,226	12,231
SEPTEMBER	38,376	13,502	243	14,302	10,329
OCTOBER	13,652	4,812	117	3,967	4,756
NOVEMBER	11,312	3,952	65	2,470	4,825
DECEMBER	10,351	2,985	69	1,858	5,439
1981					
JANUARY	19,917	5,123	169	2,263	12,362
FEBRUARY	9,983	3,896	63	1,314	4,710
MARCH	9,596	3,460	38	1,708	4,390
APRIL	9,681	3,953	45	1,556	4,127
MAY	11,490	4,965	95	1,432	4,998
JUNE	20,928	5,915	104	2,367	12,542
JULY	15,497	7,174	342	2,228	5,753
AUGUST	30,080	15,798	37	7,233	7,012
SEPTEMBER	47,292	16,428	110	21,587	9,167
OCTOBER	11,373	4,070	190	3,257	3,856
NOVEMBER	9,256	3,681	51	1,764	3,760
DECEMBER C/	11,772	3,591	45	1,526	6,610

A/ TERMINATIONS OF TEMPORARY OR EXCEPTED APPOINTMENTS OR OF PERSONAL SERVICE CONTRACTS.
B/ INCLUDES TRANSFERS, DISCHARGES, DISPLACEMENTS, EXTENDED LWOP AND SUSPENSIONS, DEATHS, DISABILITIES AND RETIREMENTS.

C/ THIS TABLE WILL BE DISCONTINUED AFTER THIS MONTH. 113-A REPORTS STARTING JANUARY 1981 WILL ONLY BREAKDOWN SEPARATIONS BY THOSE WHO QUIT OR TRANSFERRED.

