

AD-A151 196

CIVILIAN MANPOWER STATISTICS, JUNE, FY-84.
WASHINGTON HEADQUARTERS SERVICE (DOD) DIR FOR INFO
OP & RPTS. JUN 84. DTOR/MO4-84/09

11

UNCLASSIFIED

F/G 5/9

N/L

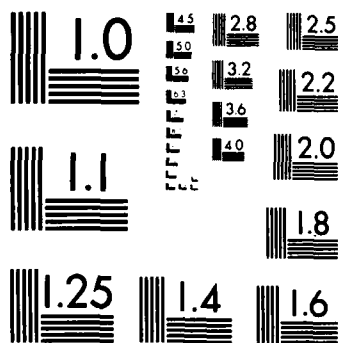
1 OF 1
AD-A151 196



END
FILMED
11 04 85

1 OF 1

AD-A151 196



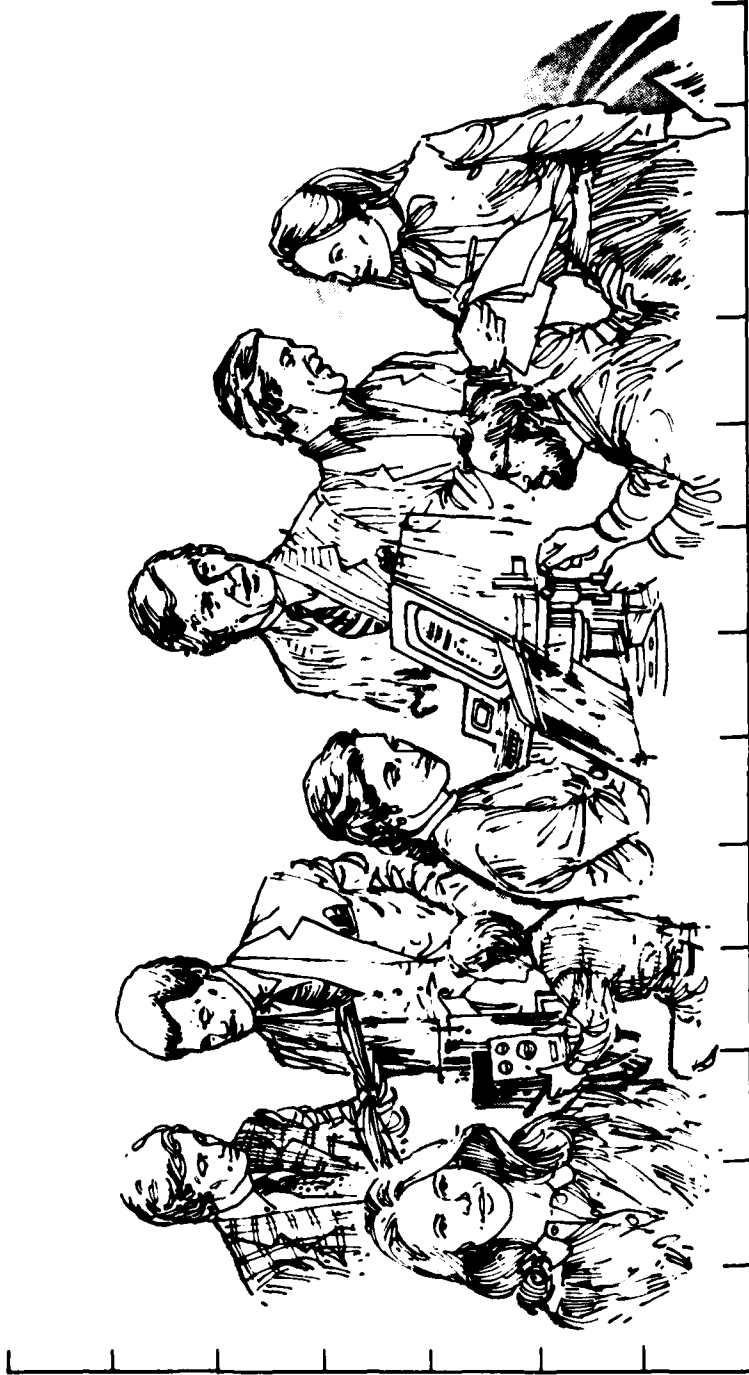
MICROCOPY RESOLUTION TEST CHART
NATIONAL BUREAU OF STANDARDS-1963-A

**THIS REPORT IS UNCLASSIFIED AND
ITS DISTRIBUTION IS UNLIMITED**



Department of Defense
CIVILIAN MANPOWER STATISTICS

JUNE 1984



Department of Defense

Civilian Manpower Statistics

June 1984

Issued Monthly by

**Washington Headquarters Services
Directorate for Information
Operations and Reports**

F O R E W O R D

Civilian Manpower Statistics (CMS) is published monthly by the Office of the Secretary of Defense, Washington Headquarters Services, Directorate for Information Operations and Reports (WHS/DIOR).

CMS provides statistical information on the civilian work force of the Department of Defense (DOD), with the exception of personnel of the National Security Agency and personnel paid from non-appropriated funds. It is produced primarily from a computerized data base developed and maintained by WHS/DIOR from monthly information provided to the Office of Personnel Management on SF 113-A, Monthly Report of Federal Civilian Employment.

This report is approved for public release at cost: distribution unlimited. However, all requests for this publication and DOD-wide data contained therein, should be referred to WHS/DIOR or cognizant offices in the Office of the Secretary of Defense. Requests for additional copies, should be addressed to the Director for Information Operations and Reports, Washington Headquarters Services, Room 1C535, The Pentagon, Washington, DC 20301-1155. (When ordering cite publication number M04.)

T A B L E O F C O N T E N T S

<u>Table</u>		<u>Page</u>
1	DOD Civilian Employment, by Function and Employment Status, According to Defense Component: June 30, 1984	1
2	Trends in DOD Civilian Employment Subject to OMB Ceiling, by Function, Employment Status, and Defense Component	2
3	DOD Direct Hire Civilian Personnel Subject to OMB Ceiling, by Function and Defense Component	3
4	DOD Direct and Indirect Hire Civilian Personnel, by Component (Excluding the Military Departments), According to Type: June 30, 1984	4
5	DOD Direct Hire Civilian Personnel, by Type, According to Defense Component: June 30, 1984	5
6	DOD Civilian Personnel, by Location and Type, According to Defense Component: June 30, 1984	6
7	DOD Indirect Hire Civilian Personnel, by Country, According to Defense Component: June 30, 1984	7
	Glossary	8

TABLE 1

DOD Civilian Employment, by Function and Employment Status,
According to Defense Component: June 30, 1984

FUNCTION/EMPLOYMENT STATUS	TOTAL <u>a/</u> DOD	ARMY	b/ NAVY	AIR FORCE	OTHER DEFENSE ACTIVITIES <u>c/</u>
<u>MILITARY FUNCTIONS</u>					
OMB Ceiling Employment	1,108,278	418,149	348,302	262,927	78,900
Direct Hire	1,022,894	358,520	337,697	249,666	77,011
Indirect Hire	85,384	59,629	10,605	13,261	1,889
Total Employment	1,123,823	422,386	354,846	265,780	80,811
Direct Hire	1,038,439	362,757	344,241	252,519	78,922
Indirect Hire	85,384	59,629	10,605	13,261	1,889
<u>CIVIL FUNCTIONS (ALL DIRECT HIRE)</u>					
OMB Ceiling Employment	30,545	30,543	0	2	0
Total Employment	32,860	32,858	0	2	0
<u>TOTAL MILITARY AND CIVIL FUNCTIONS</u>					
OMB Ceiling Employment	1,138,823	448,692	348,302	262,929	78,900
Direct Hire	1,053,439	389,063	337,697	249,668	77,011
Indirect Hire	85,384	59,629	10,605	13,261	1,889
Total Employment	1,156,683	455,244	354,846	265,782	80,811
Direct Hire	1,071,299	395,615	344,241	252,521	78,922
Indirect Hire	85,384	59,629	10,605	13,261	1,889

a/ Included in Total Employment but excluded from Office of Management and Budget (OMB) Ceiling Employment are employees exempt from OMB ceiling control. Refer to Office of Personnel Management Federal Personnel Manual System Supplement 298-2, Subchapter 53, for a delineation of employment exempt from ceiling control.

b/ Includes Marine Corps civilian personnel.

c/ See the Glossary for a list of the Other Defense Activities.

TABLE 2

Trends in DOD Civilian Employment Subject to OMB Ceiling,
by Function, Employment Status, and Defense Component

FUNCTION/COMPONENT/ EMPLOYMENT STATUS	END STRENGTHS, LAST 4 FISCAL YEARS				LAST 2 MONTHS	
	30 SEP 80	30 SEP 81	30 SEP 82	30 SEP 83	31 MAY 84	30 JUN 84
MILITARY FUNCTIONS	<u>990,356</u>	<u>1,019,466</u>	<u>1,029,854</u>	<u>1,067,824</u>	<u>1,103,421</u>	<u>1,108,278</u>
DIRECT HIRE ^{a/} b/	915,786	939,942	947,061	983,644	1,018,353	1,022,894
INDIRECT HIRE ⁻	74,570	79,524	82,793	84,180	85,068	85,384
Army						
Direct Hire	360,508	372,111	379,316	392,346	411,053	418,149
Indirect Hire	311,795	318,278	322,057	333,722	351,590	358,520
	48,713	53,833	57,259	58,624	59,463	59,629
Navy						
Direct Hire	308,715	320,858	319,554	339,552	347,360	348,302
Indirect Hire	297,984	310,123	308,885	328,907	336,813	337,697
	10,731	10,735	10,669	10,645	10,547	10,605
Air Force						
Direct Hire	244,342	246,165	248,508	252,330	258,260	262,927
Indirect Hire	230,938	232,933	235,456	239,367	245,091	249,666
	13,404	13,232	13,052	12,963	13,169	13,261
Other Defense Activities						
Direct Hire	76,791	80,332	82,476	83,596	86,748	78,900
Indirect Hire	75,069	78,608	80,663	81,648	84,859	77,011
	1,722	1,724	1,813	1,948	1,889	1,889
CIVIL FUNCTIONS ^{a/}						
<u>ALL DIRECT HIRE ^{b/}</u>	<u>32,611</u>	<u>31,800</u>	<u>31,573</u>	<u>32,823</u>	<u>29,912</u>	<u>30,545</u>
Army	32,608	31,796	31,569	32,819	29,909	30,543
Air Force	3	4	4	4	3	2
TOTAL MILITARY AND CIVIL FUNCTIONS	<u>1,022,967</u>	<u>1,051,266</u>	<u>1,061,427</u>	<u>1,100,647</u>	<u>1,133,333</u>	<u>1,138,823</u>
Direct Hire ^{a/} b/	948,397	971,742	978,634	1,016,467	1,048,265	1,053,439
Indirect Hire ⁻	74,570	79,524	82,793	84,180	85,068	85,384

a/ As reported officially to the Office of Personnel Management.

b/ Foreign Nationals supporting U.S. Military Forces overseas under contracts or agreements with foreign governments.

TABLE 3

DOD Direct Hire Civilian Personnel Subject to OMB Ceiling,
by Function and Defense Component

FUNCTION/COMPONENT	TOTAL EMPLOYMENT			FULL-TIME WITH PERMANENT APPOINTMENTS		
	31 MAY 84	30 JUN 84	30 SEP 84	31 MAY 84	30 JUN 84	30 JUN 84
<u>MILITARY FUNCTIONS</u>	<u>1,018,353</u>	<u>1,022,894</u>	<u>968,120</u>	<u>895,048</u>	<u>888,340</u>	
Army	351,590	358,520	331,644	296,965	296,665	
Navy	336,813	337,697	319,907	297,548	297,806	
Air Force	245,091	249,666	232,823	222,947	222,762	
OSD & Related Activities ^{a/}	3,624	3,681	2,707	3,396	3,403	
Defense Audiovisual Agency	260	261	502	219	222	
Defense Communications Agency	1,746	1,790	1,751	1,646	1,663	
Defense Contract Audit Agency	3,874	3,927	3,742	3,809	3,840	
Defense Intelligence Agency	2,962	2,975	2,885	2,663	2,654	
Defense Investigative Service	3,281	3,252	3,455	3,247	3,224	
Defense Logistics Agency	47,507	47,793	48,192	45,228	45,187	
Defense Mapping Agency	8,895	8,925	8,650	8,700	8,702	
Defense Nuclear Agency	692	715	670	615	621	
Department of Defense Dependents Schools	11,255	2,912	10,481	7,420	946	
Uniformed Services University of the Health Sciences	763	780	711	645	645	
<u>CIVIL FUNCTIONS</u>	<u>29,912</u>	<u>30,545</u>	<u>N/A</u>	<u>26,295</u>	<u>26,328</u>	
Army	29,909	30,543		26,292	26,326	
Air Force	3	2		3	2	
<u>TOTAL MILITARY AND CIVIL FUNCTIONS</u>	<u>1,048,265</u>	<u>1,053,439</u>	<u>N/A</u>	<u>921,343</u>	<u>914,668</u>	

a/ See the Glossary for a list of OSD and Related Activities.

TABLE 4

DOD Direct and Indirect Hire Civilian Personnel, by Component (Excluding the Military Departments), According to Type: June 30, 1984

DEFENSE COMPONENT	TOTAL	DIRECT HIRE ^{a/} CIVILIANS	INDIRECT HIRE CIVILIANS
<u>TOTALS</u>	80,811	78,922	1,889
OSD and Related Activities ^{b/}	3,719	3,706	13
Defense Audiovisual Agency	271	271	-
Defense Communications Agency	1,886	1,876	10
Defense Contract Audit Agency	4,009	4,002	7
Defense Intelligence Agency	2,976	2,976	-
Defense Investigative Service	3,291	3,291	-
Defense Logistics Agency	50,153	49,266	887
Defense Mapping Agency	9,095	9,093	2
Defense Nuclear Agency	732	732	-
Department of Defense Dependents Schools	3,882	2,912	970
Uniformed Services University of the Health Sciences	797	797	-

^{a/} Includes personnel not subject to Office of Management and Budget (OMB) ceiling control.

^{b/} See the Glossary for a list of OSD and Related Activities.

TABLE 5

DOD Direct Hire Civilian Personnel, by Type,
According to Defense Component: June 30, 1984

TYPE OF PERSONNEL	TOTAL DOD	ARMY	NAVY	AIR FORCE	OTHER DEFENSE ACTIVITIES
<u>TOTAL</u>	<u>1,071,299</u>	<u>395,615</u>	<u>344,241</u>	<u>252,521</u>	<u>78,922</u>
BY STATUS					
Full-Time	1,042,413	382,809	337,817	245,638	76,149
Part-Time	23,868	9,753	5,911	5,797	2,407
Intermittent	5,018	3,053	513	1,086	366
BY CAREER SERVICE CATEGORY					
Competitive	888,355	313,789	299,393	207,112	68,061
Excepted and SES	182,944	81,826	44,848	45,409	10,861
BY TYPE OF APPOINTMENT					
Permanent	926,779	328,879	300,242	225,651	72,007
Temporary/Indefinite	144,520	66,736	43,999	26,870	6,915
BY CITIZENSHIP					
U.S. Citizens	1,029,828	379,023	327,643	244,964	78,198
Non-Citizens	41,471	16,592	16,598	7,557	724
BY LABOR CATEGORY					
Salaries	707,158	275,110	201,470	162,562	68,016
Wage Board	364,141	120,505	142,771	89,959	10,906

TABLE 6

DOD Direct Hire Civilian Personnel, by Location and Type.
According to Defense Component: June 30, 1984

LOCATION/TYPE OF PERSONNEL	TOTAL DOD	ARMY	NAVY	AIR FORCE	OTHER DEFENSE ACTIVITIES
<u>WORLDWIDE TOTAL</u>	1,071,299	395,615	344,241	252,521	78,922
<u>UNITED STATES</u>	978,214	348,327	319,933	234,950	75,004
By Location					
Washington, D.C., SMSA ^{c/}	89,963	29,732	37,834	6,517	15,880
Remainder of U.S.	888,251	318,595	282,099	228,433	59,124
By Labor Category					
Salaried	653,062	251,511	190,995	146,290	64,266
Wage Board	325,152	96,816	128,938	88,660	10,738
By Citizenship					
U.S. Citizens	977,534	347,939	319,731	234,912	74,952
Non-Citizens	680	388	202	38	52
<u>U.S. TERRITORIES</u>	6,764	1,126	4,601	984	53
By Labor Category					
Salaried	3,185	744	1,971	429	39
Wage Board	3,579	382	2,626	555	14
By Citizenship					
U.S. Citizens	6,693	1,124	4,532	984	53
Non-Citizens	71	2	69	0	0
<u>FOREIGN COUNTRIES</u>	86,321	46,162	19,707	16,587	3,865
By Labor Category					
Salaried	50,911	22,855	8,502	15,843	3,711
Wage Board	35,410	23,307	11,205	744	154
By Citizenship					
U.S. Citizens	45,601	29,960	3,380	9,068	3,193
Non-Citizens	40,720	16,202	16,327	7,519	672

a/ Includes personnel not subject to Office of Management and Budget (OMB) ceiling control.

b/ See the Glossary for a list of the other Defense Activities.

c/ The Washington, D.C., Standard Metropolitan Statistical Area (SMSA) consists of the District of Columbia; Montgomery, Prince Georges, Charles, Calvert, and Frederick counties in Maryland; Alexandria, Fairfax, Falls Church, Manassas and Manassas Park cities, and Arlington, Fairfax, Loudoun, Prince William and Stafford counties in Virginia.

TABLE 7

DOD Indirect Hire Civilian Personnel, by Country,
According to Defense Component: June 30, 1984

COUNTRY	TOTAL DOD	ARMY	NAVY	AIR FORCE	OTHER DEFENSE ACTIVITIES ^{a/}
<u>TOTAL</u>	<u>85,384</u>	<u>59,629</u>	<u>10,605</u>	<u>13,261</u>	<u>1,889</u>
Belgium	624	594	-	10	20
Colombia	1	-	-	-	1
Germany	59,499	52,042	21	6,027	1,409
Greece	601	15	130	437	19
Guam	4	-	4	-	-
Italy	8	-	8	-	-
Japan	17,525	3,469	9,225	4,600	231
Korea	3,234	3,234	-	-	-
Netherlands	365	275	-	75	15
Philippines	8	-	7	-	1
Spain	2,053	-	1,145	822	86
United Kingdom	1,462	-	65	1,290	107

^{a/} See the Glossary for a list of the Other Defense Activities.

G L O S S A R Y

Civil Functions. Functions primarily associated with the Civil Works program of the Army Corps of Engineers. This program encompasses planning, programming, designing, constructing, and operating Federal water resource projects for navigation, flood control, hydroelectric power, water supply, recreation, and related activities. Civil Functions also includes cemetery workers (Army) and several conservation management employees (Air Force).

Competitive Service. All civil service positions in the Executive Branch, except:

1. Positions which are specifically exempted from the Competitive Service by or under statute;
2. Positions to which appointments are made by nomination for confirmation by the Senate, unless the Senate otherwise directs or when specifically included in the Competitive Service by statute;
3. Positions in the Senior Executive Service.

Also includes civil service positions not in the Executive Branch which are specifically included in the Competitive Service by statute.

Direct Hire Civilians. Employees hired directly by an agency of Department of Defense. Included are foreign nationals hired by Department of Defense to support Department of Defense activities in their home countries.

DOD. Department of Defense.

Excepted Service. All positions in the Executive Branch of the Federal government (except Senior Executive Service positions) which are specifically excepted from the Competitive Service by or pursuant to a statute, the President, or the Office of Personnel Management.

Full-Time Employees. Employees who are regularly scheduled to work the number of hours and days in the administrative workweek for their employment group or class. (Usually 5 days of 8 hours each.)

Indirect Hire Civilians. Foreign nationals assigned to support U.S. forces through contracts or agreements with foreign governments (or agencies thereof). These personnel are employees of the foreign governments involved.

Intermittent Employees. Employees who are employed with no prescheduled tour of duty (i.e., employed on an irregular or occasional basis).

Military Functions. Activities normally associated with the uniformed services.

OMB Ceiling Employment. Employees subject to Office of Management and Budget (OMB) ceilings established to administer Presidential employment ceiling limitations. Refer to Office of Personnel Management Federal Personnel Manual System Supplement 298-2, Subchapter 53, for a delineation of employment exempt from ceiling control.

OSD and Related Activities.

American Forces Information Service (AFIS)
Civilian Health and Medical Program
of the Uniformed Services (CHAMPUS)
Defense Advanced Research Projects Agency (DARPA)
Defense Legal Services (DLS)
Defense Security Assistance Agency (USAA)
Office of Economic Adjustment (OEA)
Office of the Secretary of Defense (OSD) and
Organization of the Joint Chiefs of Staff (OJCS)
Tri-Service Medical Information System (TRIMIS)
U.S. Court of Military Appeals (USCMA)
Washington Headquarters Services (WHS)

Other Defense Activities.

Defense Audiovisual Agency (DAVA)
Defense Communications Agency (DCA)
Defense Contract Audit Agency (DCAA)
Defense Intelligence Agency (DIA)
Defense Investigative Service (DIS)
Defense Logistics Agency (DLA)
Defense Mapping Agency (DMA)
Defense Nuclear Agency (DNA)
Department of Defense Dependents Schools (DODDS)
Uniformed Services University of the
Health Sciences (USUHS)

Part-Time Employees. Employees who are regularly scheduled for a prearranged tour of duty which is less than the specified number of hours or days worked by full-time employees in the same employment group or class.

Permanent Appointments. Permanent appointments are defined within each type of service as follows:

1. Competitive Service - Employees serving under career appointments who are serving or who have completed their initial appointment probation or who are not required to serve an initial appointment probation. Also includes employees with career-conditional appointments.
2. Excepted Service - Employees whose appointments carry no restrictions or conditions, such as conditional appointments, indefinite or specific time limitations, or trial periods. Based on tenure, can include employees serving trial periods or those whose tenure is equivalent to career-conditional in the Competitive Service.

3. Senior Executive Service (SES) - All SES employees except those serving under "limited term" and "limited emergency" appointments.

Salaried Employees. Primarily employees occupying positions subject to the Classification Act of 1949, as amended, and a limited number of other employees whose compensation is established by other legislation, Executive Order, or administrative determination.

Senior Executive Service (SES). Positions in an agency which are grade 16, 17, or 18 of the General Schedule or Level IV or V of the Executive Schedule (unless exempted). Also includes equivalent positions which need not be filled by appointment by the President and confirmation by the Senate and which have not been specifically excluded from the SES.

Total Paid Civilian Employment. Total direct and indirect hire civilian employment. For direct hires, includes, with some exceptions, all direct hire employees who had not officially separated as of the report date and who either worked during the reporting period or were on paid leave.

Wage System Employees. Employees whose basic rates of pay are fixed in accordance with locally prevailing rates or by wage boards or similar administrative authority. Includes prevailing rate employees. (Prevailing rate employees are those employed by an agency in a recognized trade or craft; other skilled mechanical craft; or an unskilled, semiskilled, or skilled manual labor occupation. Also includes any other person, including a foreman or supervisor, in a position where trade, craft, or labor experience and knowledge is a paramount requirement.)

