

AD-A152 608

SELECTED MEDICAL CARE STATISTICS, FIRST QUARTER, FY-84.
(U) WASHINGTON HEADQUARTERS SERVICE (DOD) DIR FOR INFO
OP & RPTS. DEC 83. DIOR/L02-84/01

1/1

UNCLASSIFIED

F/G 6/5 N/L

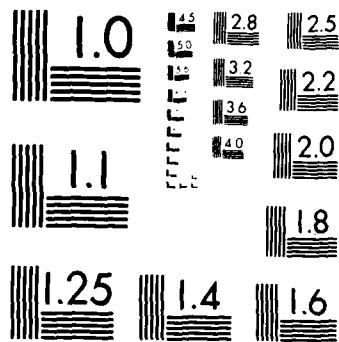
1 OF 1
AD-A152 608



END
FILMED:
11 04 85

1 OF 1

AD-A152 608



MICROCOPY RESOLUTION TEST CHART
NATIONAL BUREAU OF STANDARDS 1963-A

THIS REPORT IS UNCLASSIFIED AND
ITS DISTRIBUTION IS UNLIMITED



DEPARTMENT OF DEFENSE

SELECTED MEDICAL CARE STATISTICS

Quarter Ending December 31, 1983



F O R E W O R D

SELECTED MEDICAL CARE STATISTICS (SMCS) is a quarterly publication prepared by the Washington Headquarters Services, Directorate for Information Operations and Reports (WHS/DIOR) of the Office of the Secretary of Defense.

SMCS presents quarterly summary data concerning medical care provided at fixed military medical facilities located in (1) the United States and (2) outside the United States, in territories, possessions and foreign countries.

This publication is generated for a computerized data base developed and maintained in consonance with Department of Defense Instruction (DoDI) 6015.4, May 19, 1979, under Reports Control Symbol DD-COMP(Q)1474 by the Manpower Management Information Division of WHS/DIOR.

The report is approved for public release at cost; distribution unlimited. However, all requests for this publication and DoD-wide data contained therein should be referred to WHS/DIOR or cognizant offices in the Office of the Secretary of Defense. Questions concerning the material in this publication and requests for additional copies, should be addressed to the Director for Information Operations and Reports, Washington Headquarters Services, Room 1C535, Washington, D.C. 20301. When ordering cite publication number M06.

C O N T E N T S

<u>Number</u>		<u>Page</u>
Table 1.1	Operating Beds/Operating Bassinets/Beds Occupied - Worldwide	1
Table 1.2	Operating Beds/Operating Bassinets/Beds Occupied - United States	2
Table 1.3	Operating Beds/Operating Bassinets/Beds Occupied - Outside United States	3
Table 2.1	Admissions - Worldwide	4
Table 2.2	Admissions - United States	5
Table 2.3	Admissions - Outside United States	6
Table 3.1	Outpatient Visits and Live Births - Worldwide	7
Table 3.2	Outpatient Visits and Live Births - United States	8
Table 3.3	Outpatient Visits and Live Births - Outside United States	9
	Glossary	10

TABLE 1.1
 DEPARTMENT OF DEFENSE
 SELECTED DATA CONCERNING MEDICAL CARE
 PROVIDED AT FIXED MILITARY FACILITIES
 FOR QUARTER ENDING
 DECEMBER 1983

OPERATING BEDS - WORLDWIDE		DOD TOTAL	ARMY FACILITIES	NAVY FACILITIES	AIR FORCE FACILITIES
1	NUMBER OF OPERATING BEDS	19,132	8,544	4,706	5,882
2	NUMBER OF OPERATING BASSINETS	2,118	697	332	1,089
3	NUMBER OF BEDS OCCUPIED (DAILY AVERAGE)	14,294	6,580	3,574	4,140
4	BEDS OCCUPIED BY US ACTIVE DUTY UNIFORMED PERSONNEL	5,412	2,466	1,586	1,360
	A. MILITARY	5,349	2,451	1,552	1,346
	(1) ARMY	2,344	2,155	53	136
	(2) NAVY-MARINE CORPS	1,705	134	1,445	126
	(3) AIR FORCE	1,300	162	54	1,084
	B. OTHER UNIFORMED PERSONNEL (PHS,CG,NOAA)	63	15	34	14
5	BEDS OCCUPIED BY RETIRED US UNIFORMED PERSONNEL	2,420	1,114	494	812
	A. RETIRED MILITARY	2,401	1,108	488	805
	(1) ARMY	1,005	747	84	174
	(2) NAVY-MARINE CORPS	573	123	335	115
	(3) AIR FORCE	823	238	69	516
	B. OTHER RETIRED UNIFORMED PERSONNEL (PHS,CG,NOAA)	19	6	6	7
6	BEDS OCCUPIED BY DEPENDENTS OF US ACTIVE DUTY MILITARY PERSONNEL	3,802	1,729	985	1,088
	(1) ARMY	1,575	1,407	48	120
	(2) NAVY-MARINE CORPS	1,098	135	870	93
	(3) AIR FORCE	1,129	187	67	875
7	BEDS OCCUPIED BY DEPENDENTS OF RETIRED AND DECEASED US MILITARY PERSONNEL	2,057	851	418	788
	(1) ARMY	810	569	76	165
	(2) NAVY-MARINE CORPS	499	100	283	116
	(3) AIR FORCE	748	182	59	507
8	BEDS OCCUPIED BY DEPENDENTS OF OTHER UNIFORMED PERSONNEL (PHS,CG,NOAA)	50	15	18	17
9	BEDS OCCUPIED BY ALL OTHER BENEFICIARIES	553	405	73	75

TABLE 1.2
DEPARTMENT OF DEFENSE
SELECTED DATA CONCERNING MEDICAL CARE
PROVIDED AT FIXED MILITARY FACILITIES
FOR QUARTER ENDING
DECEMBER 1983

OPERATING BEDS - UNITED STATES		DOD TOTAL	ARMY FACILITIES	NAVY FACILITIES	AIR FORCE FACILITIES
1.	NUMBER OF OPERATING BEDS	15,998	6,692	4,161	5,145
2.	NUMBER OF OPERATING BASSINETS	1,701	487	283	931
3.	NUMBER OF BEDS OCCUPIED (DAILY AVERAGE)	12,251	5,471	3,180	3,600
4.	BEDS OCCUPIED BY US ACTIVE DUTY UNIFORMED PERSONNEL	4,315	1,879	1,364	1,072
A.	MILITARY	4,253	1,864	1,331	1,058
	(1) ARMY	1,756	1,622	45	89
	(2) NAVY-MARINE CORPS	1,458	114	1,248	96
	(3) AIR FORCE	1,039	128	38	873
B.	OTHER UNIFORMED PERSONNEL (PHS,CG,NOAA)	62	15	33	14
5.	BEDS OCCUPIED BY RETIRED US UNIFORMED PERSONNEL	2,360	1,084	482	794
A.	RETIRED MILITARY	2,341	1,078	476	787
	(1) ARMY	971	723	78	170
	(2) NAVY-MARINE CORPS	562	121	331	110
	(3) AIR FORCE	808	234	67	507
B.	OTHER RETIRED UNIFORMED PERSONNEL (PHS,CG,NOAA)	19	6	6	7
6.	BEDS OCCUPIED BY DEPENDENTS OF US ACTIVE DUTY MILITARY PERSONNEL	3,070	1,324	850	896
	(1) ARMY	1,183	1,057	37	89
	(2) NAVY-MARINE CORPS	984	128	776	80
	(3) AIR FORCE	903	139	37	727
7.	BEDS OCCUPIED BY DEPENDENTS OF RETIRED AND DECEASED US MILITARY PERSONNEL	2,019	839	409	771
	(1) ARMY	795	561	72	162
	(2) NAVY-MARINE CORPS	487	99	278	110
	(3) AIR FORCE	737	179	59	499
8.	BEDS OCCUPIED BY DEPENDENTS OF OTHER UNIFORMED PERSONNEL (PHS,CG,NOAA)	49	15	18	16
9.	BEDS OCCUPIED BY ALL OTHER BENEFICIARIES	438	330	57	51

TABLE 1.3
DEPARTMENT OF DEFENSE
SELECTED DATA CONCERNING MEDICAL CARE
PROVIDED AT FIXED MILITARY FACILITIES
FOR QUARTER ENDING
DECEMBER 1983

OPERATING BEDS - OUTSIDE UNITED STATES		DOD TOTAL	ARMY FACILITIES	NAVY FACILITIES	AIR FORCE FACILITIES
1.	NUMBER OF OPERATING BEDS	3,134	1,852	545	737
2.	NUMBER OF OPERATING BASSINETS	417	210	49	158
3.	NUMBER OF BEDS OCCUPIED (DAILY AVERAGE)	2,043	1,109	394	540
4.	BEDS OCCUPIED BY US ACTIVE DUTY UNIFORMED PERSONNEL	1,097	587	222	288
	A. MILITARY	1,096	587	221	288
	(1) ARMY	588	533	8	47
	(2) NAVY-MARINE CORPS	247	20	197	30
	(3) AIR FORCE	261	34	16	211
	B. OTHER UNIFORMED PERSONNEL (PHS,CG,NOAA)	1	0	1	0
5.	BEDS OCCUPIED BY RETIRED US UNIFORMED PERSONNEL	60	30	12	18
	A. RETIRED MILITARY	60	30	12	18
	(1) ARMY	34	24	6	4
	(2) NAVY-MARINE CORPS	11	2	4	5
	(3) AIR FORCE	15	4	2	9
	B. OTHER RETIRED UNIFORMED PERSONNEL (PHS,CG,NOAA)	0	0	0	0
6.	BEDS OCCUPIED BY DEPENDENTS OF US ACTIVE DUTY MILITARY PERSONNEL	732	405	135	192
	(1) ARMY	392	350	11	31
	(2) NAVY-MARINE CORPS	114	7	94	13
	(3) AIR FORCE	226	48	30	148
7.	BEDS OCCUPIED BY DEPENDENTS OF RETIRED AND DECEASED US MILITARY PERSONNEL	38	12	9	17
	(1) ARMY	15	8	4	3
	(2) NAVY-MARINE CORPS	12	1	5	6
	(3) AIR FORCE	11	3	0	8
8.	BEDS OCCUPIED BY DEPENDENTS OF OTHER UNIFORMED PERSONNEL (PHS,CG,NOAA)	1	0	0	1
9.	BEDS OCCUPIED BY ALL OTHER BENEFICIARIES	115	75	16	24

TABLE 2.1
DEPARTMENT OF DEFENSE
SELECTED DATA CONCERNING MEDICAL CARE
PROVIDED AT FIXED MILITARY FACILITIES
FOR QUARTER ENDING
DECEMBER 1983

	ADMISSIONS - WORLDWIDE	DOD TOTAL	ARMY FACILITIES	NAVY FACILITIES	AIR FORCE FACILITIES
10.	NUMBER OF ADMISSIONS	219,963	96,166	56,340	67,457
11.	ADMISSIONS OF US ACTIVE DUTY UNIFORMED PERSONNEL	66,121	28,397	17,298	20,426
	A. MILITARY	65,538	28,280	17,021	20,237
	(1) ARMY	27,184	25,162	562	1,460
	(2) NAVY-MARINE CORPS	18,248	1,378	15,772	1,098
	(3) AIR FORCE	20,106	1,740	687	17,679
	B. OTHER UNIFORMED PERSONNEL (PHS,CG,NOAA)	583	117	277	189
12.	ADMISSIONS OF RETIRED US UNIFORMED PERSONNEL	26,940	11,540	6,134	9,266
	A. ADMISSIONS OF RETIRED MILITARY	26,681	11,468	6,027	9,186
	(1) ARMY	10,730	7,875	983	1,872
	(2) NAVY-MARINE CORPS	6,715	1,243	4,162	1,310
	(3) AIR FORCE	9,236	2,350	882	6,004
	B. ADMISSIONS OF OTHER RETIRED UNIFORMED PERSONNEL (PHS,CG,NOAA)	259	72	107	80
13.	ADMISSIONS OF DEPENDENTS OF US ACTIVE DUTY MILITARY PERSONNEL	90,115	40,063	25,059	24,993
	A. ARMY	37,199	33,485	1,201	2,513
	B. NAVY-MARINE CORPS	27,031	2,855	22,314	1,862
	C. AIR FORCE	25,885	3,723	1,544	20,618
14.	ADMISSIONS OF DEPENDENTS OF RETIRED AND DECEASED US MILITARY PERSONNEL	28,107	10,729	6,315	11,063
	A. ARMY	10,359	7,244	1,033	2,082
	B. NAVY-MARINE CORPS	7,248	1,250	4,382	1,616
	C. AIR FORCE	10,500	2,235	900	7,365
15.	ADMISSIONS OF DEPENDENTS OF OTHER UNIFORMED MILITARY PERSONNEL	1,046	254	508	284
16.	ADMISSIONS OF ALL OTHER BENEFICIARIES	7,634	5,183	1,026	1,425

TABLE 2.2
DEPARTMENT OF DEFENSE
SELECTED DATA CONCERNING MEDICAL CARE
PROVIDED AT FIXED MILITARY FACILITIES
FOR QUARTER ENDING
DECEMBER 1983

	ADMISSIONS - UNITED STATES	DOD TOTAL	ARMY FACILITIES	NAVY FACILITIES	AIR FORCE FACILITIES
10.	NUMBER OF ADMISSIONS	186,006	78,157	49,327	58,522
11.	ADMISSIONS OF US ACTIVE DUTY UNIFORMED PERSONNEL	52,229	21,634	14,352	16,243
	A. MILITARY	51,663	21,519	14,088	16,056
	(1) ARMY	20,495	19,149	417	929
	(2) NAVY-MARINE CORPS	15,186	1,164	13,253	769
	(3) AIR FORCE	15,982	1,206	418	14,358
	B. OTHER UNIFORMED PERSONNEL (PHS.CG.NOAA)	566	115	264	187
12.	ADMISSIONS OF RETIRED US UNIFORMED PERSONNEL	26,216	11,239	5,955	9,022
	A. ADMISSIONS OF RETIRED MILITARY	25,965	11,169	5,851	8,945
	(1) ARMY	10,388	7,637	931	1,820
	(2) NAVY-MARINE CORPS	6,531	1,228	4,067	1,236
	(3) AIR FORCE	9,046	2,304	853	5,889
	B. ADMISSIONS OF OTHER RETIRED UNIFORMED PERSONNEL (PHS.CG.NOAA)	251	70	104	77
13.	ADMISSIONS OF DEPENDENTS OF US ACTIVE DUTY MILITARY PERSONNEL	73,164	30,268	21,722	21,174
	A. ARMY	27,743	24,922	929	1,892
	B. NAVY-MARINE CORPS	24,379	2,760	19,950	1,669
	C. AIR FORCE	21,042	2,586	843	17,613
14.	ADMISSIONS OF DEPENDENTS OF RETIRED AND DECEASED US MILITARY PERSONNEL	27,548	10,563	6,090	10,895
	A. ARMY	10,135	7,133	952	2,050
	B. NAVY-MARINE CORPS	7,071	1,235	4,263	1,573
	C. AIR FORCE	10,342	2,195	875	7,272
15.	ADMISSIONS OF DEPENDENTS OF OTHER UNIFORMED MILITARY PERSONNEL	1,020	253	493	274
16.	ADMISSIONS OF ALL OTHER BENEFICIARIES	5,829	4,200	715	914

TABLE 2.3
DEPARTMENT OF DEFENSE
SELECTED DATA CONCERNING MEDICAL CARE
PROVIDED AT FIXED MILITARY FACILITIES
FOR QUARTER ENDING
DECEMBER 1983

	ADMISSIONS - OUTSIDE UNITED STATES	DOD TOTAL	ARMY FACILITIES	NAVY FACILITIES	AIR FORCE FACILITIES
10.	NUMBER OF ADMISSIONS	33,957	18,009	7,013	8,935
11.	ADMISSIONS OF US ACTIVE DUTY UNIFORMED PERSONNEL	13,892	6,763	2,946	4,183
A	MILITARY	13,875	6,761	2,933	4,181
	(1) ARMY	6,689	6,013	145	531
	(2) NAVY-MARINE CORPS	3,062	214	2,519	329
	(3) AIR FORCE	4,124	534	269	3,321
B	OTHER UNIFORMED PERSONNEL (PHS,CG,NOAA)	17	2	13	2
12.	ADMISSIONS OF RETIRED US UNIFORMED PERSONNEL	724	301	179	244
A	ADMISSIONS OF RETIRED MILITARY	716	299	176	241
	(1) ARMY	342	238	52	52
	(2) NAVY-MARINE CORPS	184	15	95	74
	(3) AIR FORCE	190	46	29	115
B	ADMISSIONS OF OTHER RETIRED UNIFORMED PERSONNEL (PHS,CG,NOAA)	8	2	3	3
13.	ADMISSIONS OF DEPENDENTS OF US ACTIVE DUTY MILITARY PERSONNEL	16,951	9,795	3,337	3,819
A	ARMY	9,456	8,563	272	621
B	NAVY-MARINE CORPS	2,652	95	2,364	193
C	AIR FORCE	4,843	1,137	701	3,005
14.	ADMISSIONS OF DEPENDENTS OF RETIRED AND DECEASED US MILITARY PERSONNEL	559	166	225	168
A	ARMY	224	111	81	32
B	NAVY-MARINE CORPS	177	15	119	43
C	AIR FORCE	158	40	25	93
15.	ADMISSIONS OF DEPENDENTS OF OTHER UNIFORMED MILITARY PERSONNEL	26	1	15	10
16.	ADMISSIONS OF ALL OTHER BENEFICIARIES	1,805	983	311	511

TABLE 3 1
 DEPARTMENT OF DEFENSE
 SELECTED DATA CONCERNING MEDICAL CARE
 PROVIDED AT FIXED MILITARY FACILITIES
 FOR QUARTER ENDING
 DECEMBER 1983

	OUTPATIENT VISITS - WORLDWIDE	DOD TOTAL	ARMY FACILITIES	NAVY FACILITIES	AIR FORCE FACILITIES
17	NUMBER OF OUTPATIENT VISITS	- TOTAL	4,715,283	2,963,597	3,789,080
18	OUTPATIENT VISITS BY US ACTIVE DUTY UNIFORMED PERSONNEL	- TOTAL	1,881,112	1,197,914	1,230,803
	A. MILITARY	- TOTAL	1,876,925	1,185,744	1,227,435
	(1) ARMY	1,849,077	1,790,482	17,818	45,777
	(2) NAVY-MARINE CORPS	1,213,614	37,066	1,150,629	25,919
	(3) AIR FORCE	1,227,413	49,377	17,297	1,160,739
	B. OTHER UNIFORMED PERSONNEL (PHS,CG,NOAA)	- TOTAL	4,187	12,170	3,368
19	OUTPATIENT VISITS BY RETIRED US UNIFORMED PERSONNEL	- TOTAL	455,404	246,504	393,890
20	OUTPATIENT VISITS BY DEPENDENTS OF US ACTIVE DUTY UNIFORMED PERSONNEL	- TOTAL	1,525,950	980,486	1,443,755
	A. DEPENDENTS OF MILITARY PERSONNEL	- TOTAL	1,518,545	964,291	1,435,910
	(1) ARMY	1,460,558	1,337,494	37,225	85,839
	(2) NAVY-MARINE CORPS	1,023,545	71,318	894,811	57,416
	(3) AIR FORCE	1,434,643	109,733	32,255	1,292,655
	B. DEPENDENTS OF OTHER UNIFORMED PERSONNEL (PHS,CG,NOAA)	- TOTAL	7,405	16,195	7,845
21	OUTPATIENT VISITS BY DEPENDENTS OF RETIRED AND DECEASED US UNIFORMED PERSONNEL	- TOTAL	530,857	299,093	600,372
22	OUTPATIENT VISITS BY ALL OTHER BENEFICIARIES	- TOTAL	321,960	239,600	120,260
23	NUMBER OF LIVE BIRTHS	- TOTAL	11,248	8,219	9,062

TABLE 3.2
DEPARTMENT OF DEFENSE
SELECTED DATA CONCERNING MEDICAL CARE
PROVIDED AT FIXED MILITARY FACILITIES
FOR QUARTER ENDING
DECEMBER 1983

	OUTPATIENT VISITS - UNITED STATES	DOD TOTAL	ARMY FACILITIES	NAVY FACILITIES	AIR FORCE FACILITIES
17. NUMBER OF OUTPATIENT VISITS	- TOTAL	9,655,660	3,746,965	2,690,107	3,218,588
18. OUTPATIENT VISITS BY US ACTIVE DUTY UNIFORMED PERSONNEL	- TOTAL	3,389,477	1,357,080	1,066,540	965,857
A. MILITARY	- TOTAL	3,370,833	1,352,924	1,055,299	962,610
(1) ARMY		1,321,427	1,283,360	14,285	23,782
(2) NAVY-MARINE CORPS		1,081,123	32,912	1,030,196	18,015
(3) AIR FORCE		968,283	36,652	10,818	920,813
B. OTHER UNIFORMED PERSONNEL (PHS,CG,NOAA)	- TOTAL	18,644	4,156	11,241	3,247
19. OUTPATIENT VISITS BY RETIRED US UNIFORMED PERSONNEL	- TOTAL	1,070,708	445,170	238,718	386,820
20. OUTPATIENT VISITS BY DEPENDENTS OF US ACTIVE DUTY UNIFORMED PERSONNEL	- TOTAL	3,206,474	1,152,022	883,732	1,170,720
A. DEPENDENTS OF MILITARY PERSONNEL	- TOTAL	3,176,181	1,144,628	868,330	1,163,223
(1) ARMY		1,081,913	989,891	31,133	60,889
(2) NAVY-MARINE CORPS		934,714	67,958	815,723	51,033
(3) AIR FORCE		1,159,554	86,779	21,474	1,051,301
B. DEPENDENTS OF OTHER UNIFORMED PERSONNEL (PHS,CG,NOAA)	- TOTAL	30,293	7,394	15,402	7,497
21. OUTPATIENT VISITS BY DEPENDENTS OF RETIRED AND DECEASED US UNIFORMED PERSONNEL	- TOTAL	1,408,320	524,265	290,887	593,168
22. OUTPATIENT VISITS BY ALL OTHER BENEFICIARIES	- TOTAL	580,681	268,428	210,230	102,023
23. NUMBER OF LIVE BIRTHS	- TOTAL	23,246	8,384	7,066	7,796

TABLE 3.3
DEPARTMENT OF DEFENSE
SELECTED DATA CONCERNING MEDICAL CARE
PROVIDED AT FIXED MILITARY FACILITIES
FOR QUARTER ENDING
DECEMBER 1983

OUTPATIENT VISITS - OUTSIDE UNITED STATES		DOD TOTAL	ARMY FACILITIES	NAVY FACILITIES	AIR FORCE FACILITIES
17.	NUMBER OF OUTPATIENT VISITS	- TOTAL	968,318	273,490	570,492
18.	OUTPATIENT VISITS BY US ACTIVE DUTY UNIFORMED PERSONNEL	- TOTAL	524,032	131,374	264,946
A.	MILITARY	- TOTAL	524,001	130,445	264,825
	(1) ARMY	527,650	507,122	3,533	16,995
	(2) NAVY-MARINE CORPS	132,491	4,154	120,433	7,904
	(3) AIR FORCE	259,130	12,725	6,479	239,926
B.	OTHER UNIFORMED PERSONNEL (PHS,CG,NOAA)	- TOTAL	31	929	121
19.	OUTPATIENT VISITS BY RETIRED US UNIFORMED PERSONNEL	- TOTAL	10,234	7,786	7,070
20.	OUTPATIENT VISITS BY DEPENDENTS OF US ACTIVE DUTY UNIFORMED PERSONNEL	- TOTAL	373,928	96,754	273,035
A.	DEPENDENTS OF MILITARY PERSONNEL	- TOTAL	373,917	95,961	272,687
	(1) ARMY	378,645	347,603	6,092	24,950
	(2) NAVY-MARINE CORPS	88,831	3,360	79,088	6,383
	(3) AIR FORCE	275,089	22,954	10,781	241,354
B.	DEPENDENTS OF OTHER UNIFORMED PERSONNEL (PHS,CG,NOAA)	- TOTAL	11	76	348
21.	OUTPATIENT VISITS BY DEPENDENTS OF RETIRED AND DECEASED US UNIFORMED PERSONNEL	- TOTAL	6,592	8,206	7,204
22.	OUTPATIENT VISITS BY ALL OTHER BENEFICIARIES	- TOTAL	53,532	29,370	18,237
23.	NUMBER OF LIVE BIRTHS	- TOTAL	2,864	1,153	1,266

G L O S S A R Y

Operating Bed. A bed that is currently set up and ready in all respects for the care of a patient. It must include supporting space, equipment and staff to operate under normal circumstances. Excluded, are nursery bassinets and transient patients' beds.

Occupied Bed. A bed assigned as of midnight to a patient, to include a patient on pass or liberty not in excess of 72 hours, and any bassinets assigned to a newborn infant whose mother has been discharged from the hospital. The definition excludes: any bed assigned to a patient subsisting out, on leave, or absent without leave, and any bed occupied by a transient patient.

Operating Bassinet. A bed designed for the care of an infant that is currently set up in the newborn nursery and ready in all respects for use. It must include support space, equipment and staff to operate under normal circumstances. Excluded are infant transporters.

Admission. An admission is the act of placing an individual under treatment or observation in a medical center or a hospital. The day of admission is the day on which the medical center or hospital makes a formal acceptance of the patient who is to be provided with room, board and continuous nursing service in an area of the hospital where patients normally stay at least overnight. If both an admission and discharge occur on the same day, then that day is considered as a day of admission and shall be counted as one occupied bed day. The admission of a newborn is deemed to occur at time of birth.

Outpatient Visits. Visits made to each dispensary or separate, organized clinic of a fixed medical treatment facility for medical advice, examination, diagnosis, treatment, evaluation, consultation, or counseling including visits by military patients who are excused from duty for medical reasons but who have not been admitted for inpatient care in a facility authorized beds for inpatient care and any visits made incident to complete or flight physicals.

Live Births. A live birth is the complete expulsion or extraction from its mother of a product of conception, irrespective of the duration of pregnancy which after such separation, breathes or shows any other evidence of life such as beating of the heart, pulsation of the umbilical cord, or definite movement of voluntary muscles, whether or not the umbilical cord has been cut, or the placenta is attached; each such product of such a birth is considered liveborn.

ND