

AD-A152 615

SELECTED MEDICAL CARE STATISTICS, SECOND QUARTER, FY-83. 1/1
(U) WASHINGTON HEADQUARTERS SERVICE (DOD) DIR FOR INFO
OP & RPTS. MAR 83. DIOR/L02-83/02

UNCLASSIFIED

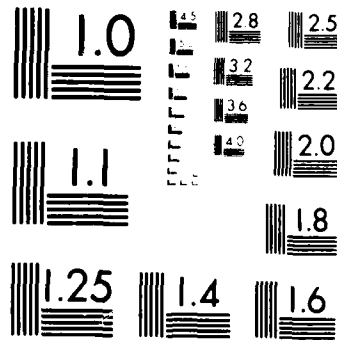
F/G 6/5 N/L

1 OF 1
AD-A152 615

END
FILMED
11 04 85

1 OF 1

AD-A152 615



MICROCOPY RESOLUTION TEST CHART
NATIONAL BUREAU OF STANDARDS-1963-A

THIS REPORT IS UNCLASSIFIED AND
ITS DISTRIBUTION IS UNLIMITED



DEPARTMENT OF DEFENSE

SELECTED MEDICAL CARE STATISTICS

Quarter Ending March 31, 1983





DEPARTMENT OF DEFENSE

SELECTED MEDICAL CARE STATISTICS



OSD

WASHINGTON HEADQUARTERS SERVICES

The logo for Washington Headquarters Services, consisting of the lowercase letters "whs" in a stylized, rounded font, enclosed within an oval border.

**DIRECTORATE FOR INFORMATION
OPERATIONS AND REPORTS (DIOR)
THE PENTAGON, WASHINGTON, D.C.**

F O R E W O R D

SELECTED MEDICAL CARE STATISTICS (SMCS) is a quarterly publication prepared by the Washington Headquarters Services, Directorate for Information Operations and Reports (WHS/DIOR) of the Office of the Secretary of Defense.

SMCS presents quarterly summary data concerning medical care provided at fixed military medical facilities located in (1) the United States and (2) outside the United States, in territories, possessions and foreign countries.

This publication is generated from a computerized data base developed and maintained in consonance with Department of Defense Instruction (DoDI) 6015.14, May 19, 1979, under Reports Control Symbol DD-COMP(Q)1474 by the Manpower Management Information Division of WHS/DIOR.

The report is approved for public release at cost: distribution unlimited. However, all requests for this publication and DoD-wide data contained therein should be referred to WHS/DIOR or cognizant offices in the Office of the Secretary of Defense. Questions concerning the material in this publication, and requests for additional copies, should be addressed to the Director, Information Operations and Reports, Washington Headquarters Services, Room 1C535, The Pentagon, Washington, D.C. 20301. (When ordering cite publication number L02.)

C O N T E N T S

<u>Number</u>		<u>Page</u>
Table 1.1	Operating Beds/Operating Bassinets/Beds Occupied - Worldwide	1
Table 1.2	Operating Beds/Operating Bassinets/Beds Occupied - United States	2
Table 1.3	Operating Beds/Operating Bassinets/Beds Occupied - Outside United States	3
Table 2.1	Admissions - Worldwide	4
Table 2.2	Admissions - United States	5
Table 2.3	Admissions - Outside United States	6
Table 3.1	Outpatient Visits and Live Births - Worldwide	7
Table 3.2	Outpatient Visits and Live Births - United States	8
Table 3.3	Outpatient Visits and Live Births - Outside United States	9
	Glossary	10

TABLE 1.1
DEPARTMENT OF DEFENSE
SELECTED DATA CONCERNING MEDICAL CARE
PROVIDED AT FIXED MILITARY FACILITIES
FOR QUARTER ENDING
MARCH 1983

OPERATING BEDS - WORLDWIDE		ION TOTAL	ARMY FACILITIES	NAVY FACILITIES	AIR FORCE FACILITIES
1.	NUMBER OF OPERATING BEDS	19,137	8,704	4,728	5,705
2.	NUMBER OF OPERATING BASSINETS	2,093	682	332	1,079
3.	NUMBER OF BEDS OCCUPIED (DAILY AVERAGE)	15,605	7,259	3,745	4,601
4.	BEDS OCCUPIED BY US ACTIVE DUTY UNIFORMED PERSONNEL - TOTAL	5,873	2,664	1,642	1,567
	A. MILITARY	5,815	2,651	1,610	1,554
	(1) ARMY	2,565	2,317	71	177
	(2) NAVY-MARINE CORPS	1,740	1,40	1,481	119
	(3) AIR FORCE	1,510	194	58	1,258
	P. OTHER UNIFORMED PERSONNEL (PHS,CG,NOAA)	58	13	32	13
5.	BEDS OCCUPIED BY RETIRED US UNIFORMED PERSONNEL - TOTAL	2,703	1,278	530	895
	A. RETIRED MILITARY	2,681	1,273	520	888
	(1) ARMY	1,140	871	85	184
	(2) NAVY-MARINE CORPS	642	150	355	137
	(3) AIR FORCE	899	252	80	567
	B. OTHER RETIRED UNIFORMED PERSONNEL (PHS,CG,NOAA)	22	5	10	7
6.	BEDS OCCUPIED BY DEPENDENTS OF US ACTIVE DUTY MILITARY PERSONNEL - TOTAL	4,046	1,871	989	1,186
	(1) ARMY	1,688	1,506	58	124
	(2) NAVY-MARINE CORPS	1,106	152	861	93
	(3) AIR FORCE	1,252	213	70	969
7.	BEDS OCCUPIED BY DEPENDENTS OF RETIRED AND DECEASED US MILITARY PERSONNEL - TOTAL	2,321	980	480	861
	(1) ARMY	890	645	73	172
	(2) NAVY-MARINE CORPS	573	114	334	125
	(3) AIR FORCE	858	221	73	564
8.	BEDS OCCUPIED BY DEPENDENTS OF OTHER UNIFORMED PERSONNEL (PHS,CG,NOAA)	66	21	28	17
9.	BEDS OCCUPIED BY ALL OTHER BENEFICIARIES - TOTAL	596	445	76	75

TABLE 1.2
DEPARTMENT OF DEFENSE
SELECTED DATA CONCERNING MEDICAL CARE
PROVIDED AT FIXED MILITARY FACILITIES
FOR QUARTER ENDING
MARCH 1983

	OPERATING BEDS - UNITED STATES	DOD TOTAL	ARMY FACILITIES	NAVY FACILITIES	AIR FORCE FACILITIES
1.	NUMBER OF OPERATING BEDS	16,045	6,852	4,183	5,010
2.	NUMBER OF OPERATING BASSINETS	1,660	472	287	921
3.	NUMBER OF BEDS OCCUPIED (DAILY AVERAGE)	13,350	6,037	3,337	3,976
4.	BEDS OCCUPIED BY US ACTIVE DUTY UNIFORMED PERSONNEL	4,646	2,025	1,405	1,216
A.	MILITARY	4,589	2,012	1,374	1,203
(1)	ARMY	1,910	1,727	65	118
(2)	NAVY-MARINE CORPS	1,478	131	1,266	81
(3)	AIR FORCE	1,201	154	43	1,004
B.	OTHER UNIFORMED PERSONNEL (PHS,CG,NOAA)	57	13	31	13
5.	BEDS OCCUPIED BY RETIRED US UNIFORMED PERSONNEL	2,635	1,247	517	871
A.	RETIRED MILITARY	2,613	1,242	507	864
(1)	ARMY	1,103	846	80	177
(2)	NAVY-MARINE CORPS	630	148	349	133
(3)	AIR FORCE	880	248	78	554
B.	OTHER RETIRED UNIFORMED PERSONNEL (PHS,CG,NOAA)	22	5	10	7
6.	BEDS OCCUPIED BY DEPENDENTS OF US ACTIVE DUTY MILITARY PERSONNEL	3,258	1,420	859	979
(1)	ARMY	1,261	1,121	50	90
(2)	NAVY-MARINE CORPS	990	144	769	77
(3)	AIR FORCE	1,007	155	40	812
7.	BEDS OCCUPIED BY DEPENDENTS OF RETIRED AND DECEASED US MILITARY PERSONNEL	2,277	965	468	844
(1)	ARMY	870	633	69	168
(2)	NAVY-MARINE CORPS	562	113	328	121
(3)	AIR FORCE	845	219	71	555
8.	BEDS OCCUPIED BY DEPENDENTS OF OTHER UNIFORMED PERSONNEL (PHS,CG,NOAA)	65	21	27	17
9.	BEDS OCCUPIED BY ALL OTHER BENEFICIARIES	469	359	61	49

TABLE 1.3
DEPARTMENT OF DEFENSE
SELECTED DATA CONCERNING MEDICAL CARE
PROVIDED AT FIXED MILITARY FACILITIES
FOR QUARTER ENDING
MARCH 1983

	OPERATING BEDS - OUTSIDE UNITED STATES	DOD TOTAL	ARMY FACILITIES	NAVY FACILITIES	AIR FORCE FACILITIES
1. NUMBER OF OPERATING BEDS	- TOTAL	3,092	1,852	545	695
2. NUMBER OF OPERATING BASSINETS	- TOTAL	413	210	45	158
3. NUMBER OF BEDS OCCUPIED (DAILY AVERAGE)	- TOTAL	2,255	1,222	408	625
4. BEDS OCCUPIED BY US ACTIVE DUTY UNIFORMED PERSONNEL	- TOTAL	1,227	649	237	351
A. MILITARY	- TOTAL	1,226	639	236	351
(1) ARMY		611	590	6	59
(2) NAVY-MARINE CORPS		262	9	215	38
(3) AIR FORCE		309	40	15	254
B. OTHER UNIFORMED PERSONNEL (PHS,CG,NOAA)	- TOTAL	1	0	1	0
5. BEDS OCCUPIED BY RETIRED US UNIFORMED PERSONNEL	- TOTAL	64	31	13	24
A. RETIRED MILITARY	- TOTAL	64	31	13	24
(1) ARMY		37	25	5	7
(2) NAVY-MARINE CORPS		12	2	6	4
(3) AIR FORCE		19	4	2	13
B. OTHER RETIRED UNIFORMED PERSONNEL (PHS,CG,NOAA)	- TOTAL	0	0	0	0
6. BEDS OCCUPIED BY DEPENDENTS OF US ACTIVE DUTY MILITARY PERSONNEL	- TOTAL	788	451	130	207
(1) ARMY		427	385	8	34
(2) NAVY-MARINE CORPS		116	8	92	16
(3) AIR FORCE		245	58	30	157
7. BEDS OCCUPIED BY DEPENDENTS OF RETIRED AND DECEASED US MILITARY PERSONNEL	- TOTAL	44	15	12	17
(1) ARMY		20	12	4	4
(2) NAVY-MARINE CORPS		11	1	6	4
(3) AIR FORCE		13	2	2	9
8. BEDS OCCUPIED BY DEPENDENTS OF OTHER UNIFORMED PERSONNEL (PHS,CG,NOAA)	- TOTAL	1	0	1	0
9. BEDS OCCUPIED BY ALL OTHER BENEFICIARIES	- TOTAL	127	86	15	26

TABLE 2.1
DEPARTMENT OF DEFENSE
SELECTED DATA CONCERNING MEDICAL CARE
PROVIDED AT FIXED MILITARY FACILITIES
FOR QUARTER ENDING
MARCH 1983

ADMISSIONS - WORLDWIDE		DOD TOTAL	ARMY FACILITIES	NAVY FACILITIES	AIR FORCE FACILITIES
10. NUMBER OF ADMISSIONS	- TOTAL				
11. ADMISSIONS OF US ACTIVE DUTY UNIFORMED PERSONNEL	- TOTAL	238,810	105,490	58,621	74,699
A. MILITARY	- TOTAL	74,591	31,716	19,036	23,839
(1) ARMY		31,582	31,582	18,704	23,683
(2) NAVY-MARINE CORPS		28,053	28,053	584	1,595
(3) AIR FORCE		14,622	1,462	17,327	1,198
		23,750	2,067	793	20,890
B. OTHER UNIFORMED PERSONNEL (PHS,CG,NOAA)	- TOTAL	622	134	332	156
12. ADMISSIONS OF RETIRED US UNIFORMED PERSONNEL	- TOTAL	29,756	13,138	6,383	10,235
A. ADMISSIONS OF RETIRED MILITARY	- TOTAL	29,470	13,065	6,260	10,145
(1) ARMY		12,027	8,993	988	2,046
(2) NAVY-MARINE CORPS		7,271	1,444	4,306	1,521
(3) AIR FORCE		10,172	2,628	966	6,578
B. ADMISSIONS OF OTHER RETIRED UNIFORMED PERSONNEL (PHS,CG,NOAA)	- TOTAL	286	73	123	90
13. ADMISSIONS OF DEPENDENTS OF US ACTIVE DUTY MILITARY PERSONNEL	- TOTAL	93,611	42,009	24,711	26,891
A. ARMY		34,844	34,844	1,253	2,501
B. NAVY-MARINE CORPS		26,864	3,082	21,858	1,924
C. AIR FORCE		28,149	4,083	1,600	22,466
14. ADMISSIONS OF DEPENDENTS OF RETIRED AND DECEASED US MILITARY PERSONNEL	- TOTAL	31,088	12,162	6,909	12,017
A. ARMY		11,401	8,080	1,050	2,271
B. NAVY-MARINE CORPS		7,869	1,356	4,782	1,731
C. AIR FORCE		11,818	2,726	1,077	8,015
15. ADMISSIONS OF DEPENDENTS OF OTHER UNIFORMED MILITARY PERSONNEL	- TOTAL	1,127	343	505	279
16. ADMISSIONS OF ALL OTHER BENEFICIARIES	- TOTAL	8,637	6,122	1,077	1,438

TABLE 100
 DEPARTMENT OF DEFENSE
 REPORTED DATA CONCERNING MEDICAL CARE
 PROVIDED AT FIVE MILITARY FACILITIES
 FOR QUARTER ENDING
 APRIL 1955

	ADMISSIONS - UNIFORMED MILITARY PERSONNEL	POP. TOTAL	ARMY FACILITIES	NAVY FACILITIES	AIR FORCE FACILITIES
10. NUMBER OF ADMISSIONS	6,015	65,475	51,501	64,542	
11. ADMISSIONS OF UNIFORMED MILITARY PERSONNEL	5,275	23,734	15,970	17,026	
A. MILITARY	5,275	23,734	15,970	18,874	
B. OTHER UNIFORMED PERSONNEL (RES, CG, NOAA)	840	133	316	152	
12. ADMISSIONS OF RETIRED MILITARY PERSONNEL	29,605	17,879	6,217	9,961	
A. ADMISSIONS OF RETIRED MILITARY PERSONNEL	28,225	12,755	6,097	9,873	
B. ADMISSIONS OF OTHER RETIRED UNIFORMED PERSONNEL (RES, CG, NOAA)	1,380	8,752	929	1,978	
C. ADMISSIONS OF DEPENDENTS OF US ACTIVE DUTY MILITARY PERSONNEL	7,128	1,433	4,229	1,466	
D. ADMISSIONS OF OTHER RETIRED UNIFORMED PERSONNEL (RES, CG, NOAA)	9,938	2,570	939	6,429	
13. ADMISSIONS OF DEPENDENTS OF US ACTIVE DUTY MILITARY PERSONNEL	281	73	120	88	
A. ARMY					
B. NAVY-MARINE CORPS					
C. AIR FORCE					
14. ADMISSIONS OF DEPENDENTS OF RETIRED AND DECEASED US MILITARY PERSONNEL	73,643	31,588	21,368	22,687	
A. ARMY	28,686	25,788	1,043	1,855	
B. NAVY-MARINE CORPS	24,181	2,977	19,520	1,684	
C. AIR FORCE	22,776	2,823	805	19,148	
15. ADMISSIONS OF DEPENDENTS OF RETIRED AND DECEASED US MILITARY PERSONNEL	30,429	11,945	6,683	11,801	
A. ARMY	11,117	7,922	971	2,224	
B. NAVY-MARINE CORPS	7,691	1,341	4,671	1,679	
C. AIR FORCE	11,621	2,682	1,041	7,898	
16. ADMISSIONS OF DEPENDENTS OF OTHER UNIFORMED MILITARY PERSONNEL	1,097	341	483	273	
17. ADMISSIONS OF ALL OTHER BENEFICIARIES	6,713	5,039	780	894	

TABLE 2.3
 DEPARTMENT OF DEFENSE
 SELECTED DATA CONCERNING MEDICAL CARE
 PROVIDED AT FIXED MILITARY FACILITIES
 FOR QUARTER ENDING
 MARCH 1983

	ADMISSIONS - OUTSIDE UNITED STATES	DOD TOTAL	ARMY FACILITIES	NAVY FACILITIES	AIR FORCE FACILITIES
10. NUMBER OF ADMISSIONS	- TOTAL	37,192	20,015	7,120	10,057
11. ADMISSIONS OF US ACTIVE DUTY UNIFORMED PERSONNEL	- TOTAL	15,861	7,982	3,066	4,813
A. MILITARY	- TOTAL	15,840	7,981	3,050	4,809
(1) ARMY		8,015	7,256	98	661
(2) NAVY-MARINE CORPS		3,158	125	2,639	394
(3) AIR FORCE		4,667	600	313	3,754
B. OTHER UNIFORMED PERSONNEL (PHS,CG,NOAA)	- TOTAL	21	1	16	4
12. ADMISSIONS OF RETIRED US UNIFORMED PERSONNEL	- TOTAL	750	310	166	274
A. ADMISSIONS OF RETIRED MILITARY		745	310	163	272
(1) ARMY		368	241	59	68
(2) NAVY-MARINE CORPS		143	11	77	55
(3) AIR FORCE		234	58	27	149
B. ADMISSIONS OF OTHER RETIRED UNIFORMED PERSONNEL (PHS,CG,NOAA)	- TOTAL	5	0	3	2
13. ADMISSIONS OF DEPENDENTS OF US ACTIVE DUTY MILITARY PERSONNEL	- TOTAL	17,968	10,421	3,343	4,204
A. ARMY		9,912	9,056	210	646
B. NAVY-MARINE CORPS		2,683	105	2,338	240
C. AIR FORCE		5,373	1,260	795	3,318
14. ADMISSIONS OF DEPENDENTS OF RETIRED AND DECEASED US MILITARY PERSONNEL	- TOTAL	659	217	226	216
A. ARMY		284	158	79	47
B. NAVY-MARINE CORPS		178	15	111	52
C. AIR FORCE		197	44	36	117
15. ADMISSIONS OF DEPENDENTS OF OTHER UNIFORMED MILITARY PERSONNEL	- TOTAL	30	2	22	6
16. ADMISSIONS OF ALL OTHER BENEFICIARIES	- TOTAL	1,924	1,083	297	544

TABLE 3.1
DEPARTMENT OF DEFENSE
SELECTED DATA CONCERNING MEDICAL CARE
PROVIDED AT FIELD MILITARY FACILITIES
FOR QUARTER ENDING
MARCH 1967

	OUTPATIENT VISITS BY WORKLOAD	INPATIENT VISITS	OPERS FACILITIES	GOVT FACILITIES	OFF-FACILITY
17. NUMBER OF OUTPATIENT VISITS	1,000,000	1,000,000	1,000,000	1,000,000	1,000,000
18. OUTPATIENT VISITS BY SERVICE COMPONENT PERSONNEL					
A. MILITARY	4,000,000	4,000,000	4,000,000	4,000,000	4,000,000
(1) ARMY	3,000,000	3,000,000	3,000,000	3,000,000	3,000,000
(2) NAVY-MARINE CORPS	1,000,000	1,000,000	1,000,000	1,000,000	1,000,000
(3) AIR FORCE	0	0	0	0	0
B. OTHER UNIFORMED PERSONNEL (CIVILIAN)	0	0	0	0	0
19. OUTPATIENT VISITS BY RETIRED OR DECEASED PERSONNEL	0	0	0	0	0
20. OUTPATIENT VISITS BY DEPENDENTS OF ALL OTHER UNIFORMED PERSONNEL					
A. DEPENDENTS OF MILITARY PERSONNEL	4,000,000	4,000,000	4,000,000	4,000,000	4,000,000
(1) ARMY	1,000,000	1,000,000	1,000,000	1,000,000	1,000,000
(2) NAVY-MARINE CORPS	1,000,000	1,000,000	1,000,000	1,000,000	1,000,000
(3) AIR FORCE	2,000,000	2,000,000	2,000,000	2,000,000	2,000,000
B. DEPENDENTS OF OTHER UNIFORMED PERSONNEL (FHS, CG, NOAA)	0	0	0	0	0
21. OUTPATIENT VISITS BY DEPENDENTS OF RETIRED AND DECEASED US UNIFORMED PERSONNEL	1,000,000	1,000,000	1,000,000	1,000,000	1,000,000
22. OUTPATIENT VISITS BY ALL OTHER BENEFICIARIES	785,538	785,538	785,538	785,538	785,538
23. NUMBER OF LIVE BIRTHS	27,957	27,957	27,957	27,957	27,957

TABLE 3.2
DEPARTMENT OF DEFENSE
SELECTED DATA CONCERNING MEDICAL CARE
PROVIDED AT FIXED MILITARY FACILITIES
FOR QUARTER ENDING
MARCH 1983

-----		IODD	ARMY	NAVY	AIR FORCE
OUTPATIENT VISITS - UNITED STATES		TOTAL	FACILITIES	FACILITIES	FACILITIES
-----		-----	-----	-----	-----
17.	NUMBER OF OUTPATIENT VISITS	10,833,934	4,319,170	2,925,678	3,589,086
-	TOTAL				
18.	OUTPATIENT VISITS BY US ACTIVE DUTY UNIFORMED PERSONNEL	3,815,623	1,591,975	1,143,665	1,079,983
-	TOTAL				
A.	MILITARY	3,794,438	1,587,203	1,130,445	1,076,790
-	TOTAL				
(1)	ARMY	1,543,628	1,505,269	14,700	23,659
(2)	NAVY-MARINE CORPS	1,160,736	38,326	1,104,562	17,848
(3)	AIR FORCE	1,090,074	43,608	11,183	1,035,283
B.	OTHER UNIFORMED PERSONNEL (PHS,CG,NOAA)	21,185	4,772	13,220	3,193
-	TOTAL				
19.	OUTPATIENT VISITS BY RETIRED US UNIFORMED PERSONNEL	1,158,462	483,622	259,328	415,512
-	TOTAL				
20.	OUTPATIENT VISITS BY DEPENDENTS OF US ACTIVE DUTY UNIFORMED PERSONNEL	3,623,112	1,332,773	973,036	1,317,343
-	TOTAL				
A.	DEPENDENTS OF MILITARY PERSONNEL	3,589,397	1,322,880	956,518	1,309,999
-	TOTAL				
(1)	ARMY	1,238,478	1,140,188	32,967	65,323
(2)	NAVY-MARINE CORPS	1,036,524	81,274	900,094	55,156
(3)	AIR FORCE	1,314,395	101,418	23,457	1,189,520
B.	DEPENDENTS OF OTHER UNIFORMED PERSONNEL (PHS,CG,NOAA)	33,715	9,853	16,518	7,344
-	TOTAL				
21.	OUTPATIENT VISITS BY DEPENDENTS OF RETIRED AND DECEASED US UNIFORMED PERSONNEL	1,567,271	592,030	319,687	655,554
-	TOTAL				
22.	OUTPATIENT VISITS BY ALL OTHER BENEFICIARIES	669,466	318,810	229,962	120,694
-	TOTAL				
23.	NUMBER OF LIVE BIRTHS	22,909	8,547	6,697	7,665
-	TOTAL				

TABLE 3.3
 DEPARTMENT OF DEFENSE
 SELECTED DATA CONCERNING MEDICAL CARE
 PROVIDED AT FIXED MILITARY FACILITIES
 FOR QUARTER ENDING
 MARCH 1983

	OUTPATIENT VISITS - OUTSIDE UNITED STATES	IOD TOTAL	ARMY FACILITIES	NAVY FACILITIES	AIR FORCE FACILITIES
17. NUMBER OF OUTPATIENT VISITS	- TOTAL	1,963,264	1,070,788	298,769	593,707
18. OUTPATIENT VISITS BY US ACTIVE DUTY UNIFORMED PERSONNEL	- TOTAL	1,000,093	571,372	148,923	280,798
A. MILITARY	- TOTAL	998,536	571,363	147,508	280,725
(1) ARMY		577,283	554,118	4,041	19,124
(2) NAVY-MARINE CORPS		148,440	3,217	136,441	8,782
(3) AIR FORCE		272,813	14,028	7,026	251,760
B. OTHER UNIFORMED PERSONNEL (PHS,CG,NOAA)	- TOTAL	1,557	9	1,415	93
19. OUTPATIENT VISITS BY RETIRED US UNIFORMED PERSONNEL	- TOTAL	25,031	10,278	7,547	7,206
20. OUTPATIENT VISITS BY DEPENDENTS OF US ACTIVE DUTY UNIFORMED PERSONNEL	- TOTAL	797,825	420,988	99,170	277,667
A. DEPENDENTS OF MILITARY PERSONNEL	- TOTAL	796,646	420,970	98,249	276,427
(1) ARMY		425,036	391,817	6,369	26,850
(2) NAVY-MARINE CORPS		91,264	3,347	81,297	6,620
(3) AIR FORCE		280,346	25,806	10,593	243,947
B. DEPENDENTS OF OTHER UNIFORMED PERSONNEL (PHS,CG,NOAA)	- TOTAL	1,179	18	871	290
21. OUTPATIENT VISITS BY DEPENDENTS OF RETIRED AND DECEASED US UNIFORMED PERSONNEL	- TOTAL	24,243	7,027	9,011	8,205
22. OUTPATIENT VISITS BY ALL OTHER BENEFICIARIES	- TOTAL	116,072	61,123	34,167	20,782
23. NUMBER OF LIVE BIRTHS	- TOTAL	5,048	2,844	1,081	1,123

G L O S S A R Y

Operating Bed. A bed that is currently set up and ready in all respects for the care of a patient. It must include supporting space, equipment and staff to operate under normal circumstances. Excluded, are nursery bassinets and transient patients' beds.

Occupied Bed. A bed assigned as of midnight to a patient, to include a patient on pass or liberty not in excess of 72 hours, and any bassinets assigned to a newborn infant whose mother has been discharged from the hospital. The definition excludes: any bed assigned to a patient subsisting out, on leave, or absent without leave, and any bed occupied by a transient patient.

Operating Bassinet. A bed designed for the care of an infant that is currently set up in the newborn nursery and ready in all respects for use. It must include support space, equipment and staff to operate under normal circumstances. Excluded are infant transporters.

Admission. An admission is the act of placing an individual under treatment or observation in a medical center or a hospital. The day of admission is the day on which the medical center or hospital makes a formal acceptance of the patient who is to be provided with room, board, and continuous nursing service in an area of the hospital where patients normally stay at least overnight. If both an admission and discharge occur on the same day, then that day is considered as a day of admission and shall be counted as one occupied bed day. The admission of a newborn is deemed to occur at the time of birth.

Outpatient Visits. Visits made to each dispensary or separate, organized clinic of a fixed medical treatment facility for medical advice, examination, diagnosis, treatment, evaluation, consultation, or counseling including visits by military patients who are excused from duty for medical reasons but who have not been admitted for inpatient care in a facility authorized beds for inpatient care and any visits made incident to complete or flight physicals.

Live Births. A live birth is the complete expulsion or extraction from its mother of a product of conception, irrespective of the duration of pregnancy which after such separation, breathes or shows any other evidence of life such as beating of the heart, pulsation of the umbilical cord, or definite movement of voluntary muscles, whether or not the umbilical cord has been cut or the placenta is attached; each such product of such a birth is considered liveborn.

