

AD-A152 652

SELECTED MEDICAL CARE STATISTICS, THIRD QUARTER, FY-83. 1/3
(U) WASHINGTON HEADQUARTERS SERVICE (DOD) DIR FOR INFO
OP & RPTS. JUN 83. DIOR/L02-83/03

UNCLASSIFIED

F/G 6/5 N/L

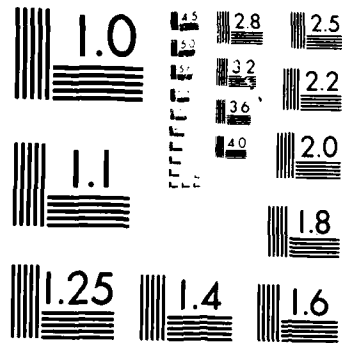
1 OF 1
ADATS2 602



END
FILMED
11 04 85

1 OF 1

AD-A152 652



MICROCOPY RESOLUTION TEST CHART
NATIONAL BUREAU OF STANDARDS-1963-A

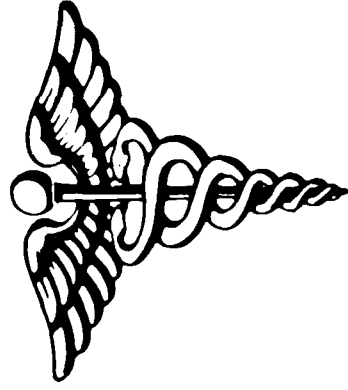
THIS REPORT IS UNCLASSIFIED AND
ITS DISTRIBUTION IS UNLIMITED



DEPARTMENT OF DEFENSE

SELECTED MEDICAL CARE STATISTICS

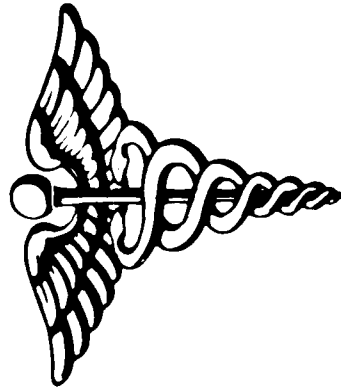
Quarter Ending June 30, 1983





DEPARTMENT OF DEFENSE

SELECTED MEDICAL CARE STATISTICS



OSD

WASHINGTON HEADQUARTERS SERVICES

The logo for the Directorate for Information Operations and Reports (DIOR), consisting of the lowercase letters "whs" in a stylized, bold font, enclosed within an oval border.

**DIRECTORATE FOR INFORMATION
OPERATIONS AND REPORTS (DIOR)
THE PENTAGON, WASHINGTON, D.C.**

F O R E W O R D

SELECTED MEDICAL CARE STATISTICS (SMCS) is a quarterly publication prepared by the Washington Headquarters Services, Directorate for Information Operations and Reports (WHS/DIOR) of the Office of the Secretary of Defense.

SMCS presents quarterly summary data concerning medical care provided at fixed military medical facilities located in (1) the United States and (2) outside the United States, in territories, possessions and foreign countries.

This publication is generated from a computerized data base developed and maintained in consonance with Department of Defense Instruction (DoDI) 6015.14, May 19, 1979, under Reports Control Symbol DD-COMP(Q)1474 by the Manpower Management Information Division of WHS/DIOR.

The report is approved for public release at cost: distribution unlimited. However, all requests for this publication and DoD-wide data contained therein should be referred to WHS/DIOR or cognizant offices in the Office of the Secretary of Defense. Questions concerning the material in this publication, and requests for additional copies, should be addressed to the Director, Information Operations and Reports, Washington Headquarters Services, Room 1C535, The Pentagon, Washington, D.C. 20301. (When ordering cite publication number L02.)

C O N T E N T S

<u>Number</u>		<u>Page</u>
Table 1.1	Operating Beds/Operating Bassinets/Beds Occupied - Worldwide	1
Table 1.2	Operating Beds/Operating Bassinets/Beds Occupied - United States	2
Table 1.3	Operating Beds/Operating Bassinets/Beds Occupied - Outside United States	3
Table 2.1	Admissions - Worldwide	4
Table 2.2	Admissions - United States	5
Table 2.3	Admissions - Outside United States	6
Table 3.1	Outpatient Visits and Live Births - Worldwide	7
Table 3.2	Outpatient Visits and Live Births - United States	8
Table 3.3	Outpatient Visits and Live Births - Outside United States	9
	Glossary	10

TABLE 1.1
 DEPARTMENT OF DEFENSE
 SELECTED DATA CONCERNING MEDICAL CARE
 PROVIDED AT FIXED MILITARY FACILITIES
 FOR QUARTER ENDING
 JUNE 1983

OPERATING BEDS - WORLDWIDE		JDD TOTAL	ARMY FACILITIES		NAVY FACILITIES		AIR FORCE FACILITIES	
1.	NUMBER OF OPERATING BEDS	- TOTAL	19,107	8,704	4,698	5,705		
2.	NUMBER OF OPERATING BASSINETS	- TOTAL	2,124	682	361	1,081		
3.	NUMBER OF BEDS OCCUPIED (DAILY AVERAGE)	- TOTAL	15,017	7,056	3,597	4,364		
4.	BEDS OCCUPIED BY US ACTIVE DUTY UNIFORMED PERSONNEL	- TOTAL	5,693	2,610	1,597	1,486		
A.	MILITARY	- TOTAL	5,633	2,596	1,563	1,474		
	(1) ARMY		2,502	2,281	72	149		
	(2) NAVY-MARINE CORPS		1,698	146	1,430	122		
	(3) AIR FORCE		1,433	169	61	1,203		
B.	OTHER UNIFORMED PERSONNEL (PHS,CG,NOAA)	- TOTAL	60	14	34	12		
5.	BEDS OCCUPIED BY RETIRED US UNIFORMED PERSONNEL	- TOTAL	2,532	1,209	490	833		
A.	RETIRED MILITARY	- TOTAL	2,510	1,203	480	827		
	(1) ARMY		1,063	816	79	168		
	(2) NAVY-MARINE CORPS		591	133	333	125		
	(3) AIR FORCE		856	254	68	534		
B.	OTHER RETIRED UNIFORMED PERSONNEL (PHS,CG,NOAA)	- TOTAL	22	6	10	6		
6.	BEDS OCCUPIED BY DEPENDENTS OF US ACTIVE DUTY MILITARY PERSONNEL	- TOTAL	3,901	1,789	981	1,131		
	(1) ARMY		1,630	1,449	60	121		
	(2) NAVY-MARINE CORPS		1,088	141	852	95		
	(3) AIR FORCE		1,183	199	69	915		
7.	BEDS OCCUPIED BY DEPENDENTS OF RETIRED AND DECEASED US MILITARY PERSONNEL	- TOTAL	2,207	952	435	820		
	(1) ARMY		848	620	71	157		
	(2) NAVY-MARINE CORPS		548	121	298	129		
	(3) AIR FORCE		811	211	66	534		
8.	BEDS OCCUPIED BY DEPENDENTS OF OTHER UNIFORMED PERSONNEL (PHS,CG,NOAA)	- TOTAL	59	18	25	16		
9.	BEDS OCCUPIED BY ALL OTHER BENEFICIARIES	- TOTAL	625	478	69	78		

TABLE 1.2
DEPARTMENT OF DEFENSE
SELECTED DATA CONCERNING MEDICAL CARE
PROVIDED AT FIXED MILITARY FACILITIES
FOR QUARTER ENDING
JUNE 1983

OPERATING BEDS - UNITED STATES		IOD TOTAL	ARMY FACILITIES	NAVY FACILITIES	AIR FORCE FACILITIES
1.	NUMBER OF OPERATING BEDS	16,015	6,852	4,153	5,010
2.	NUMBER OF OPERATING BASSINETS	1,714	472	319	923
3.	NUMBER OF BEDS OCCUPIED (DAILY AVERAGE)	12,864	5,884	3,208	3,772
4.	BEDS OCCUPIED BY US ACTIVE DUTY UNIFORMED PERSONNEL	4,522	1,992	1,372	1,158
A.	MILITARY	4,467	1,979	1,341	1,147
(1)	ARMY	1,869	1,710	65	94
(2)	NAVY-MARINE CORPS	1,456	134	1,232	90
(3)	AIR FORCE	1,142	135	44	963
B.	OTHER UNIFORMED PERSONNEL (PHS,CG,NOAA)	55	13	31	11
5.	BEDS OCCUPIED BY RETIRED US UNIFORMED PERSONNEL	2,466	1,181	479	806
A.	RETIRED MILITARY	2,444	1,175	469	800
(1)	ARMY	1,032	795	75	162
(2)	NAVY-MARINE CORPS	575	131	327	117
(3)	AIR FORCE	837	249	67	521
B.	OTHER RETIRED UNIFORMED PERSONNEL (PHS,CG,NOAA)	22	6	10	6
6.	BEDS OCCUPIED BY DEPENDENTS OF US ACTIVE DUTY MILITARY PERSONNEL	3,154	1,369	851	934
(1)	ARMY	1,232	1,090	49	93
(2)	NAVY-MARINE CORPS	974	135	763	76
(3)	AIR FORCE	948	144	39	765
7.	BEDS OCCUPIED BY DEPENDENTS OF RETIRED AND DECEASED US MILITARY PERSONNEL	2,169	938	427	804
(1)	ARMY	830	610	67	153
(2)	NAVY-MARINE CORPS	540	120	295	125
(3)	AIR FORCE	799	208	65	526
8.	BEDS OCCUPIED BY DEPENDENTS OF OTHER UNIFORMED PERSONNEL (PHS,CG,NOAA)	57	17	24	16
9.	BEDS OCCUPIED BY ALL OTHER BENEFICIARIES	496	387	55	54

TABLE 1.3
DEPARTMENT OF DEFENSE
SELECTED DATA CONCERNING MEDICAL CARE
PROVIDED AT FIXED MILITARY FACILITIES
FOR QUARTER ENDING
JUNE 1983

OPERATING BEDS - OUTSIDE UNITED STATES		IOD TOTAL	ARMY FACILITIES	NAVY FACILITIES	AIR FORCE FACILITIES
1.	NUMBER OF OPERATING BEDS	3,092	1,852	545	695
2.	NUMBER OF OPERATING BASSINETS	410	210	42	158
3.	NUMBER OF BEDS OCCUPIED (DAILY AVERAGE)	2,153	1,172	389	592
4.	BEDS OCCUPIED BY US ACTIVE DUTY UNIFORMED PERSONNEL	1,171	618	225	328
A.	MILITARY	1,166	617	222	327
(1)	ARMY	633	571	7	55
(2)	NAVY-MARINE CORPS	242	12	198	32
(3)	AIR FORCE	291	34	17	240
B.	OTHER UNIFORMED PERSONNEL (PHS,CG,NOAA)	5	1	3	1
5.	BEDS OCCUPIED BY RETIRED US UNIFORMED PERSONNEL	66	28	11	27
A.	RETIRED MILITARY	66	28	11	27
(1)	ARMY	31	21	4	6
(2)	NAVY-MARINE CORPS	16	2	6	8
(3)	AIR FORCE	19	5	1	13
B.	OTHER RETIRED UNIFORMED PERSONNEL (PHS,CG,NOAA)	0	0	0	0
6.	BEDS OCCUPIED BY DEPENDENTS OF US ACTIVE DUTY MILITARY PERSONNEL	747	420	130	197
(1)	ARMY	398	359	11	28
(2)	NAVY-MARINE CORPS	114	6	89	19
(3)	AIR FORCE	235	55	30	150
7.	BEDS OCCUPIED BY PERSONNEL ON RELEASED AND RELEASED US MILITARY PERSONNEL	38	14	8	16
(1)	ARMY	18	10	4	4
(2)	NAVY-MARINE CORPS	8	1	3	4
(3)	AIR FORCE	12	3	1	8
8.	BEDS OCCUPIED BY DEPENDENTS OF OTHER UNIFORMED PERSONNEL (PHS,CG,NOAA)	2	1	1	0
9.	BEDS OCCUPIED BY ALL OTHER BENEFICIARIES	129	91	14	24

TABLE 2.1
DEPARTMENT OF DEFENSE
SELECTED DATA CONCERNING MEDICAL CARE
PROVIDED AT FIXED MILITARY FACILITIES
FOR QUARTER ENDING
JUNE 1983

	ADMISSIONS - WORKLOAD	POP. TOTAL	ARMY FACILITIES	NAVY FACILITIES	AIR FORCE FACILITIES
10. NUMBER OF ADMISSIONS	- TOTAL	232,512	162,391	58,636	71,585
11. ADMISSIONS OF US ACTIVE DUTY UNIFORMED PERSONNEL	- TOTAL	71,887	39,534	18,949	22,409
A. MILITARY	- TOTAL	71,299	39,425	18,641	22,233
(1) ARMY		29,149	26,963	659	1,527
(2) NAVY-MARINE CORPS		19,766	1,472	17,148	1,146
(3) AIR FORCE		22,384	1,990	834	19,560
B. OTHER UNIFORMED PERSONNEL (VETS, CO-BOYS)	- TOTAL	584	109	308	167
12. ADMISSIONS OF RETIRED US UNIFORMED PERSONNEL	- TOTAL	28,500	12,500	6,323	9,677
A. ADMISSIONS OF RETIRED MILITARY	- TOTAL	28,216	12,426	6,181	9,603
(1) ARMY		11,333	8,472	956	1,905
(2) NAVY-MARINE CORPS		7,098	1,390	4,258	1,450
(3) AIR FORCE		9,779	2,564	967	6,248
B. ADMISSIONS OF OTHER RETIRED UNIFORMED PERSONNEL (VETS, CO-BOYS)	- TOTAL	290	74	142	74
13. ADMISSIONS OF DEPENDENTS OF US ACTIVE DUTY MILITARY PERSONNEL	- TOTAL	91,533	40,207	25,151	26,175
A. ARMY		32,174	33,308	1,261	2,545
B. NAVY-MARINE CORPS		27,123	2,910	20,288	1,925
C. AIR FORCE		22,226	3,969	1,602	21,705
14. ADMISSIONS OF DEPENDENTS OF RETIRED AND DECEASED US MILITARY PERSONNEL	- TOTAL	30,618	11,836	6,616	11,572
A. ARMY		11,009	7,899	1,028	2,132
B. NAVY-MARINE CORPS		3,659	1,377	4,585	1,897
C. AIR FORCE		11,300	2,554	1,003	7,743
15. ADMISSIONS OF DEPENDENTS OF OTHER UNIFORMED MILITARY PERSONNEL	- TOTAL	1,088	301	515	272
16. ADMISSIONS OF ALL OTHER BENEFICIARIES	- TOTAL	9,490	6,919	1,082	1,489

TABLE 2.2
 DEPARTMENT OF DEFENSE
 SELECTED DATA CONCERNING MEDICAL CARE
 PROVIDED AT FIXED MILITARY FACILITIES
 FOR QUARTER ENDING
 JUNE 1983

ADMISSIONS - UNITED STATES		DOD TOTAL	ARMY FACILITIES	NAVY FACILITIES	AIR FORCE FACILITIES
10.	NUMBER OF ADMISSIONS	197,443	83,593	51,525	62,325
11.	ADMISSIONS OF US ACTIVE DUTY UNIFORMED PERSONNEL	57,063	23,204	15,775	18,084
	A. MILITARY	56,505	23,098	15,485	17,922
	(1) ARMY	21,819	20,273	565	981
	(2) NAVY-MARINE CORPS	16,570	1,352	14,407	811
	(3) AIR FORCE	18,116	1,473	513	16,130
	B. OTHER UNIFORMED PERSONNEL (PHS,CC,NOAA)	558	106	290	162
12.	ADMISSIONS OF RETIRED US UNIFORMED PERSONNEL	27,748	12,210	6,154	9,384
	A. ADMISSIONS OF RETIRED MILITARY	27,465	12,137	6,014	9,314
	(1) ARMY	11,003	8,251	905	1,847
	(2) NAVY-MARINE CORPS	6,902	1,375	4,170	1,352
	(3) AIR FORCE	9,560	2,511	939	6,110
	B. ADMISSIONS OF OTHER RETIRED UNIFORMED PERSONNEL (PHS,CC,NOAA)	283	73	140	70
13.	ADMISSIONS OF DEFENDENTS OF US ACTIVE DUTY MILITARY PERSONNEL	74,595	30,452	21,901	22,242
	A. ARMY	27,871	24,888	1,015	1,968
	B. NAVY-MARINE CORPS	24,570	2,828	20,040	1,702
	C. AIR FORCE	22,154	2,736	846	18,572
14.	ADMISSIONS OF DEFENDENTS OF RETIRED AND DECEASED US MILITARY PERSONNEL	29,443	11,630	6,435	11,378
	A. ARMY	10,800	7,746	964	2,090
	B. NAVY-MARINE CORPS	7,508	1,366	4,489	1,653
	C. AIR FORCE	11,135	2,518	982	7,635
15.	ADMISSIONS OF DEFENDENTS OF OTHER UNIFORMED MILITARY PERSONNEL	1,057	299	495	263
16.	ADMISSIONS OF ALL OTHER BENEFICIARIES	2,537	5,798	765	974

TABLE 2.3
DEPARTMENT OF DEFENSE
SELECTED DATA CONCERNING MEDICAL CARE
PROVIDED AT FIXED MILITARY FACILITIES
FOR QUARTER ENDING
JUNE 1983

		DDP TOTAL	ARMY FACILITIES	NAVY FACILITIES	AIR FORCE FACILITIES
10. NUMBER OF ADMISSIONS	- TOTAL	35,669	18,698	7,111	9,260
11. ADMISSIONS OF US ACTIVE DUTY UNIFORMED PERSONNEL	- TOTAL	14,820	7,330	3,174	4,316
A. MILITARY	- TOTAL	14,794	7,327	3,156	4,311
(1) ARMY		7,370	6,690	94	546
(2) NAVY-MARINE CORPS		3,196	120	2,741	335
(3) AIR FORCE		4,228	517	321	3,430
B. OTHER UNIFORMED PERSONNEL (PHS, CG, NOAA)	- TOTAL	26	3	18	5
12. ADMISSIONS OF RETIRED US UNIFORMED PERSONNEL	- TOTAL	752	290	169	293
A. ADMISSIONS OF RETIRED MILITARY		745	289	167	289
(1) ARMY		330	221	51	58
(2) NAVY-MARINE CORPS		196	15	88	93
(3) AIR FORCE		219	53	28	138
B. ADMISSIONS OF OTHER RETIRED UNIFORMED PERSONNEL (PHS, CG, NOAA)	- TOTAL	7	1	2	4
13. ADMISSIONS OF DEPENDENTS OF US ACTIVE DUTY MILITARY PERSONNEL	- TOTAL	14,938	9,755	3,250	3,933
A. ARMY		9,263	8,440	246	577
B. NAVY-MARINE CORPS		2,553	82	2,248	223
C. AIR FORCE		5,122	1,233	756	3,133
14. ADMISSIONS OF DEPENDENTS OF RETIRED AND DECEASED US MILITARY PERSONNEL	- TOTAL	575	200	181	194
A. ARMY		259	153	64	42
B. NAVY-MARINE CORPS		151	11	96	44
C. AIR FORCE		165	36	21	108
15. ADMISSIONS OF DEPENDENTS OF OTHER UNIFORMED MILITARY PERSONNEL	- TOTAL	31	2	20	9
16. ADMISSIONS OF ALL OTHER BENEFICIARIES	- TOTAL	1,953	1,121	31	515

TABLE 3.1
DEPARTMENT OF DEFENSE
FIELD DATA CONCERNING MEDICAL CARE
FURNISHED AT FIELD MILITARY FACILITIES
FOR QUARTER ENDING
JUNE 1993

	OUTPATIENT VISITS PERSONNEL	UNIFORMED SERVICES OF HEALTH PERSONNEL	DDP TOTAL	ARMY FACILITIES	NAVY FACILITIES	AIR FORCE FACILITIES
1. NUMBER OF OUTPATIENT VISITS	TOTAL	11,578,762	5,384,114	3,196,573	4,096,615	
2. OUTPATIENT VISITS BY HIS ACTIVE DUTY RATE/TYPE PERSONNEL	TOTAL	4,292,900	2,162,274	1,099,427	1,093,429	
3. MILLIONS	TOTAL	4,275,597	2,157,586	1,090,999	1,066,604	
4. ARMY	TOTAL	2,123,179	1,059,069	534,144	524,925	
5. NAVY	TOTAL	1,294,312	643,506	324,885	318,621	
6. AIR FORCE	TOTAL	1,348,105	454,911	241,230	213,681	
7. OTHER UNIFORMED PERSONNEL (RESERVE/RETIRED)	TOTAL	29,303	4,648	14,475	14,810	
8. OUTPATIENT VISITS BY RESERVE/RETIRED PERSONNEL	TOTAL	1,153,629	422,259	210,474	211,785	
9. OUTPATIENT VISITS BY DEPENDENTS OF US ACTIVE DUTY UNIFORMED PERSONNEL	TOTAL	4,113,923	1,654,294	1,004,411	955,882	
10. DEPENDENTS OF ACTIVE DUTY PERSONNEL	TOTAL	3,139,817	1,225,647	717,772	517,043	
11. ARMY	TOTAL	1,551,177	614,162	312,275	301,902	
12. NAVY	TOTAL	1,009,317	391,115	199,999	191,116	
13. AIR FORCE	TOTAL	1,493,389	628,917	392,136	236,781	
14. DEPENDENTS OF OTHER UNIFORMED PERSONNEL	TOTAL	64,106	9,027	4,604	4,423	
15. NUMBER OF VISITS BY DEPENDENTS OF RETIRED DUTY PERSONNEL	TOTAL	1,561,700	588,037	304,697	283,340	
16. DEPENDENTS OF RETIRED DUTY PERSONNEL	TOTAL	597,402	187,563	97,402	90,061	
17. NUMBER OF VISITS BY	TOTAL	58,213	11,749	6,199	5,550	

TABLE 3.2
DEPARTMENT OF DEFENSE
SELECTED DATA CONCERNING MEDICAL CARE
PROVIDED AT FIXED MILITARY FACILITIES
FOR QUARTER ENDING
JUNE 1983

	UNITED STATES	DOU TOTAL	ARMY FACILITIES	NAVY FACILITIES	AIR FORCE FACILITIES
17. NUMBER OF OUTPATIENT VISITS	- TOTAL	10,661,644	4,315,683	2,875,747	3,469,616
18. OUTPATIENT VISITS BY US ACTIVE DUTY UNIFORMED PERSONNEL	- TOTAL	3,782,400	1,594,775	1,117,023	1,070,602
A. MILITARY	- TOTAL	3,761,614	1,590,168	1,104,078	1,067,368
(1) ARMY		1,550,204	1,508,720	15,987	25,497
(2) NAVY-MARINE CORPS		1,132,316	37,142	1,076,507	18,667
(3) AIR FORCE		1,079,094	44,306	11,584	1,023,204
B. OTHER UNIFORMED PERSONNEL (FHS,CG,NOAA)	- TOTAL	20,786	4,607	12,945	3,234
19. OUTPATIENT VISITS BY RETIRED US UNIFORMED PERSONNEL	- TOTAL	1,128,664	466,798	253,236	408,630
20. OUTPATIENT VISITS BY DEPENDENTS OF US ACTIVE DUTY UNIFORMED PERSONNEL	- TOTAL	3,427,802	1,245,789	949,257	1,232,756
A. DEPENDENTS OF MILITARY PERSONNEL	- TOTAL	3,394,890	1,236,589	933,203	1,225,098
(1) ARMY		1,160,039	1,063,605	32,548	63,886
(2) NAVY-MARINE CORPS		1,006,869	76,193	877,777	52,899
(3) AIR FORCE		1,227,982	96,791	22,878	1,108,313
B. DEPENDENTS OF OTHER UNIFORMED PERSONNEL (FHS,CG,NOAA)	- TOTAL	32,912	9,200	16,054	7,658
21. OUTPATIENT VISITS BY DEPENDENTS OF RETIRED AND DECEASED US UNIFORMED PERSONNEL	- TOTAL	1,537,889	580,254	314,815	642,820
22. OUTPATIENT VISITS BY ALL OTHER BENEFICIARIES	- TOTAL	784,291	428,067	241,416	114,808
23. NUMBER OF LIVE BIRTHS	- TOTAL	23,475	8,428	7,050	7,997

TABLE 2
 DEPARTMENT OF DEFENSE
 SCHEDULED DAILY VISITS TO RETIRED MILITARY CORPS
 PROVIDED BY STATES, MILITARY FACILITIES
 AND UNIFORMED PERSONNEL
 JANUARY 1967

	OUTPATIENT VISITS - OUTSIDE UNITED STATES	Job Total	ARMY FACILITIES	NAVY FACILITIES	AIR FORCE FACILITIES
17. NUMBER OF OUTPATIENT VISITS	- TOTAL	1,917,454	1,036,433	310,791	576,432
18. OUTPATIENT VISITS BY US ACTIVE DUTY UNIFORMED PERSONNEL	- TOTAL	1,066,599	567,459	160,304	275,829
A. MILITARY	- TOTAL	1,003,983	567,418	160,820	275,745
(1) ARMY		571,514	550,340	3,800	18,649
(2) NAVY-MARINE CORPS		161,894	3,408	149,793	8,795
(3) AIR FORCE		269,621	13,279	7,106	249,361
B. OTHER UNIFORMED PERSONNEL (FHS,CG,NOAA)	- TOTAL	1,602	41	1,483	80
19. OUTPATIENT VISITS BY RETIRED US UNIFORMED PERSONNEL	- TOTAL	25,011	10,431	1,201	1,320
20. OUTPATIENT VISITS BY DEPENDENTS OF US ACTIVE DUTY UNIFORMED PERSONNEL	- TOTAL	746,171	389,445	97,899	261,317
A. DEPENDENTS OF MILITARY PERSONNEL	- TOTAL	744,937	389,403	94,570	261,314
(1) ARMY		391,684	366,667	1,927	24,890
(2) NAVY-MARINE CORPS		88,448	3,500	79,100	5,848
(3) AIR FORCE		265,955	14,778	10,738	240,397
B. DEPENDENTS OF OTHER UNIFORMED PERSONNEL (FHS,CG,NOAA)	- TOTAL	1,234	1	819	404
21. OUTPATIENT VISITS BY DEPENDENTS OF RETIRED AND DECEASED US UNIFORMED PERSONNEL	- TOTAL	23,747	6,582	9,413	8,772
22. OUTPATIENT VISITS BY ALL OTHER BENEFICIARIES	- TOTAL	117,117	57,434	77,467	22,154
23. NUMBER OF LIVE BIRTHS	- TOTAL	5,117	1,600	1,140	1,206

G L O S S A R Y

Operating Bed. A bed that is currently set up and ready in all respects for the care of a patient. It must include supporting space, equipment and staff to operate under normal circumstances. Excluded, are nursery bassinets and transient patients' beds.

Occupied Bed. A bed assigned as of midnight to a patient, to include a patient on pass or liberty not in excess of 72 hours, and any bassinets assigned to a newborn infant whose mother has been discharged from the hospital. The definition excludes: any bed assigned to a patient subsisting out, on leave, or absent without leave, and any bed occupied by a transient patient.

Operating Bassinet. A bed designed for the care of an infant that is currently set up in the newborn nursery and ready in all respects for use. It must include support space, equipment and staff to operate under normal circumstances. Excluded are infant transporters.

Admission. An admission is the act of placing an individual under treatment or observation in a medical center or a hospital. The day of admission is the day on which the medical center or hospital makes a formal acceptance of the patient who is to be provided with room, board, and continuous nursing service in an area of the hospital where patients normally stay at least overnight. If both an admission and discharge occur on the same day, then that day is considered as a day of admission and shall be counted as one occupied bed day. The admission of a newborn is deemed to occur at the time of birth.

Outpatient Visits. Visits made to each dispensary or separate, organized clinic of a fixed medical treatment facility for medical advice, examination, diagnosis, treatment, evaluation, consultation, or counseling including visits by military patients who are excused from duty for medical reasons but who have not been admitted for inpatient care in a facility authorized beds for inpatient care and any visits made incident to complete or flight physicals.

Live Births. A live birth is the complete expulsion or extraction from its mother of a product of conception, irrespective of the duration of pregnancy which after such separation, breathes or shows any other evidence of life such as beating of the heart, pulsation of the umbilical cord, or definite movement of voluntary muscles, whether or not the umbilical cord has been cut or the placenta is attached; each such product of such a birth is considered liveborn.

