

AD-A152 671

SELECTED MEDICAL CARE STATISTICS, FIRST QUARTER, FY-83.
(U) WASHINGTON HEADQUARTERS SERVICE (DOD) DIR FOR INFO
OP & RPTS. DEC 82. DIOR/L02-83/01

VVI

UNCLASSIFIED

F/G 6/5 N/L

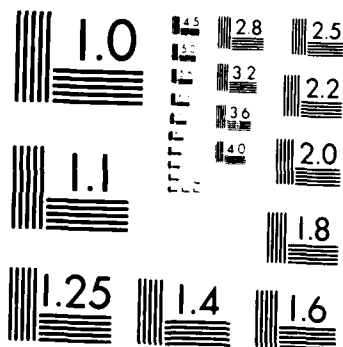
1 OF 1
AD A152 651



END
FILMED
11-04-85

1 OF 1

AD-A152 651



MICROCOPY RESOLUTION TEST CHART
NATIONAL BUREAU OF STANDARDS 1963-A

THIS REPORT IS UNCLASSIFIED AND
ITS DISTRIBUTION IS UNLIMITED



DEPARTMENT OF DEFENSE

SELECTED MEDICAL CARE STATISTICS

Quarter Ending December 31, 1982





DEPARTMENT OF DEFENSE

SELECTED MEDICAL CARE STATISTICS



OSD

WASHINGTON HEADQUARTERS SERVICES

whs

**DIRECTORATE FOR INFORMATION
OPERATIONS AND REPORTS (DIOR)
THE PENTAGON, WASHINGTON, D.C.**

F O R E W O R D

SELECTED MEDICAL CARE STATISTICS (SMCS) is a quarterly publication prepared by the Washington Headquarters Services, Directorate for Information Operations and Reports (WHS/DIOR) of the Office of the Secretary of Defense.

SMCS presents quarterly summary data concerning medical care provided at fixed military medical facilities located in (1) the United States and (2) outside the United States, in territories, possessions and foreign countries.

This publication is generated from a computerized data base developed and maintained in consonance with Department of Defense Instruction (DoDI) 6015.14, May 19, 1979, under Reports Control Symbol DD-COMP(Q)1474 by the Manpower Management Information Division of WHS/DIOR.

The report is approved for public release at cost: distribution unlimited. However, all requests for this publication and DoD-wide data contained therein should be referred to WHS/DIOR or cognizant offices in the Office of the Secretary of Defense. Questions concerning the material in this publication, and requests for additional copies, should be addressed to the Director, Information Operations and Reports, Washington Headquarters Services, Room 1C535, The Pentagon, Washington, D.C. 20301. (When ordering cite publication number L02.)

C O N T E N T S

<u>Number</u>		<u>Page</u>
Table 1.1	Operating Beds/Operating Bassinets/Beds Occupied - Worldwide	1
Table 1.2	Operating Beds/Operating Bassinets/Beds Occupied - United States	2
Table 1.3	Operating Beds/Operating Bassinets/Beds Occupied - Outside United States	3
Table 2.1	Admissions - Worldwide	4
Table 2.2	Admissions - United States	5
Table 2.3	Admissions - Outside United States	6
Table 3.1	Outpatient Visits and Live Births - Worldwide	7
Table 3.2	Outpatient Visits and Live Births - United States	8
Table 3.3	Outpatient Visits and Live Births - Outside United States	9
Table 1.1.C	Five Year Comparison - Operating Beds/Operating Bassinets/Beds Occupied - Worldwide	10
Table 2.1.C	Five Year Comparison - Admissions - Worldwide	11
Table 3.1.C	Five Year Comparison - Outpatient Visits and Live Births - Worldwide	12

Glossary

TABLE 1.1
 DEPARTMENT OF DEFENSE
 SELECTED DATA CONCERNING MEDICAL CARE
 PROVIDED AT FIXED MILITARY FACILITIES
 FOR QUARTER ENDING
 DECEMBER 1982

OPERATING BEDS - WORLDWIDE		DOO	ARMY	NAVY	AIR FORCE
		TOTAL	FACILITIES	FACILITIES	FACILITIES
1.	NUMBER OF OPERATING BEDS	18,563	8,884	9,009	6,575
2.	NUMBER OF OPERATING HOSPITALS	2,071	637	309	1,065
3.	NUMBER OF BEDS OCCUPIED (DAILY AVERAGE)	13,962	6,567	3,919	3,381
4.	BEDS OCCUPIED BY US ACTIVE DUTY UNIFORMED PERSONNEL	5,299	2,467	1,933	1,531
A.	MILITARY	5,247	2,457	1,929	1,525
(1)	ARMY	2,337	2,141	66	130
(2)	NAVY-MARINE CORPS	1,575	133	1,341	101
(3)	AIR FORCE	1,335	183	57	1,095
H.	OTHER UNIFORMED PERSONNEL (PHS,CG,NOAA)	52	10	29	13
5.	BEDS OCCUPIED BY RETIRED US UNIFORMED PERSONNEL	2,365	1,101	988	776
A.	RETIRED MILITARY	2,345	1,096	981	769
(1)	ARMY	974	739	79	156
(2)	NAVY-MARINE CORPS	588	140	337	111
(3)	AIR FORCE	793	217	65	591
H.	OTHER RETIRED UNIFORMED PERSONNEL (PHS,CG,NOAA)	20	5	7	8
6.	BEDS OCCUPIED BY DEPENDENTS OF US ACTIVE DUTY MILITARY PERSONNEL	3,678	1,716	921	1,041
(1)	ARMY	1,546	1,382	54	110
(2)	NAVY-MARINE CORPS	1,040	150	804	96
(3)	AIR FORCE	1,092	184	63	845
7.	BEDS OCCUPIED BY DEPENDENTS OF RETIRED AND DECEASED US MILITARY PERSONNEL	1,399	855	413	731
(1)	ARMY	777	565	71	141
(2)	NAVY-MARINE CORPS	500	103	286	111
(3)	AIR FORCE	722	187	56	470
8.	BEDS OCCUPIED BY DEPENDENTS OF OTHER UNIFORMED PERSONNEL (PHS,CG,NOAA)	53	14	24	15
9.	BEDS OCCUPIED BY ALL OTHER BENEFICIARIES	568	414	75	79

TABLE 1.2
DEPARTMENT OF OFFENSE
SELECTED DATA CONCERNING MEDICAL CARE
PROVIDED AT FIXED MILITARY FACILITIES
FOR QUARTER ENDING
DECEMBER 1982

OPERATING BEDS - UNITED STATES		000	ARMY	NAVY	AIR FORCE
		TOTAL	FACILITIES	FACILITIES	FACILITIES
1.	NUMBER OF OPERATING BEDS	15,730	7,163	5,569	4,998
2.	NUMBER OF OPERATING MASSINETS	1,647	468	272	107
3.	NUMBER OF BEDS OCCUPIED (DAILY AVERAGE)	11,938	5,428	3,056	3,454
4.	BEDS OCCUPIED BY US ACTIVE DUTY UNIFORMED PERSONNEL	4,212	1,964	1,290	1,047
A.	MILITARY	4,162	1,854	1,272	1,036
	(1) ARMY	1,734	1,586	60	88
	(2) NAVY-MARINE CORPS	1,370	124	1,171	75
	(3) AIR FORCE	1,058	144	41	973
B.	OTHER UNIFORMED PERSONNEL (PHS,CG,NOAA)	50	10	27	13
5.	BEDS OCCUPIED BY RETIRED US UNIFORMED PERSONNEL	2,300	1,073	474	753
A.	RETIRED MILITARY	2,281	1,068	467	746
	(1) ARMY	941	717	74	10
	(2) NAVY-MARINE CORPS	573	138	329	105
	(3) AIR FORCE	767	213	64	490
B.	OTHER RETIRED UNIFORMED PERSONNEL (PHS,CG,NOAA)	14	5	7	2
6.	BEDS OCCUPIED BY DEPENDENTS OF US ACTIVE DUTY MILITARY PERSONNEL	2,968	1,307	796	865
	(1) ARMY	1,157	1,031	44	42
	(2) NAVY-MARINE CORPS	937	145	718	74
	(3) AIR FORCE	874	131	34	709
7.	BEDS OCCUPIED BY DEPENDENTS OF RETIRED AND DECEASED US MILITARY PERSONNEL	1,959	940	402	717
	(1) ARMY	759	554	66	139
	(2) NAVY-MARINE CORPS	440	281	281	107
	(3) AIR FORCE	710	184	55	471
8.	BEDS OCCUPIED BY DEPENDENTS OF OTHER UNIFORMED PERSONNEL (PHS,CG,NOAA)	51	14	23	14
9.	BEDS OCCUPIED BY ALL OTHER BENEFICIARIES	448	330	62	56

TABLE 1-3
DEPARTMENT OF DEFENSE
SELECTED DATA CONCERNING MEDICAL CARE
PROVIDED AT FIXED MILITARY FACILITIES
FOR QUARTER ENDING
DECEMBER 1982

	OPERATING BEDS - OUTSIDE UNITED STATES	DOD TOTAL	ARMY FACILITIES	NAVY FACILITIES	AIR FORCE FACILITIES
1. NUMBER OF OPERATING BEDS	- TOTAL	2,833	1,721	435	577
2. NUMBER OF OPERATING HOURS	- TOTAL	424	229	37	158
3. NUMBER OF BEDS OCCUPIED (DAILY AVERAGE)	- TOTAL	2,024	1,119	358	527
4. BEDS OCCUPIED BY US ACTIVE DUTY UNIFORMED PERSONNEL	- TOTAL	1,087	503	194	390
A. MILITARY	- TOTAL	1,045	603	192	250
(1) ARMY		555	555	5	92
(2) NAVY-MARINE CORPS		205	9	170	23
(3) AIR FORCE		277	37	16	224
B. OTHER UNIFORMED PERSONNEL (PHS,CG,NOAA)	- TOTAL	2	0	2	0
5. BEDS OCCUPIED BY RETIRED US UNIFORMED PERSONNEL	- TOTAL	65	24	14	25
A. RETIRED MILITARY	- TOTAL	64	28	14	22
(1) ARMY		33	22	5	5
(2) NAVY-MARINE CORPS		15	2	8	5
(3) AIR FORCE		16	4	1	11
B. OTHER RETIRED UNIFORMED PERSONNEL (PHS,CG,NOAA)	- TOTAL	1	0	0	1
6. BEDS OCCUPIED BY DEPENDENTS OF US ACTIVE DUTY MILITARY PERSONNEL	- TOTAL	710	409	125	176
(1) ARMY		389	351	10	28
(2) NAVY-MARINE CORPS		103	5	86	12
(3) AIR FORCE		218	53	24	135
7. BEDS OCCUPIED BY DEPENDENTS OF RETIRED AND DECEASED US MILITARY PERSONNEL	- TOTAL	40	15	11	14
(1) ARMY		18	11	5	2
(2) NAVY-MARINE CORPS		10	1	5	4
(3) AIR FORCE		12	3	1	8
8. BEDS OCCUPIED BY DEPENDENTS OF OTHER UNIFORMED PERSONNEL (PHS,CG,NOAA)	- TOTAL	2	0	1	1
9. BEDS OCCUPIED BY ALL OTHER BENEFICIARIES	- TOTAL	120	34	13	73

TABLE 2.1
 DEPARTMENT OF DEFENSE
 SELECTED DATA CONCERNING MEDICAL CARE
 PROVIDED AT FIXED MILITARY FACILITIES
 FOR QUARTER ENDING
 DECEMBER 1982

	ADMISSIONS - WORLDWIDE	000 TOTAL	ARMY FACILITIES	NAVY FACILITIES	AIR FORCE FACILITIES
10.	NUMBER OF ADMISSIONS	213,432	94,228	53,469	65,735
11.	ADMISSIONS OF US ACTIVE DUTY UNIFORMED PERSONNEL	66,267	28,161	17,080	21,026
	A. MILITARY	65,744	29,052	16,804	20,888
	(1) ARMY	26,758	24,852	567	1,339
	(2) NAVY-MARINE CORPS	17,945	1,328	15,543	1,074
	(3) AIR FORCE	21,041	1,872	694	18,475
12.	ADMISSIONS OF OTHER UNIFORMED PERSONNEL (PHS,CG,NOAA)	523	109	276	138
13.	ADMISSIONS OF RETIRED US UNIFORMED PERSONNEL	25,151	10,851	5,692	8,608
	A. ADMISSIONS OF RETIRED MILITARY	24,942	10,797	5,607	8,538
	(1) ARMY	10,039	7,368	937	1,734
	(2) NAVY-MARINE CORPS	6,376	1,251	3,864	1,261
	(3) AIR FORCE	8,527	2,178	806	5,543
	B. ADMISSIONS OF OTHER RETIRED UNIFORMED PERSONNEL (PHS,CG,NOAA)	209	54	85	70
14.	ADMISSIONS OF DEPENDENTS OF US ACTIVE DUTY MILITARY PERSONNEL	85,924	38,719	23,239	23,966 ^{1/}
	A. ARMY	35,734	32,238	1,188	2,248
	B. NAVY-MARINE CORPS	25,252	2,941	20,572	1,739
	C. AIR FORCE	24,938	3,480	1,479	19,979
15.	ADMISSIONS OF DEPENDENTS OF RETIRED AND DECEASED US MILITARY PERSONNEL	26,991	10,742	5,905	10,344
	A. ARMY	10,056	7,165	983	1,908
	B. NAVY-MARINE CORPS	6,858	1,249	4,088	1,521
	C. AIR FORCE	10,077	2,328	834	6,915
16.	ADMISSIONS OF DEPENDENTS OF OTHER UNIFORMED MILITARY PERSONNEL	1,002	268	480	254
17.	ADMISSIONS OF ALL OTHER BENEFICIARIES	8,097	5,487	1,073	1,537

^{1/} Excludes newborn infants who are discharged with their mothers.

TABLE 2-2
DEPARTMENT OF DEFENSE
SELECTED DATA CONCERNING MEDICAL CARE
PROVIDED AT FIXED MILITARY FACILITIES
FOR QUARTER ENDING
DECEMBER 1982

ADMISSIONS - UNITED STATES		000 TOTAL	ARMY FACILITIES	NAVY FACILITIES	AIR FORCE FACILITIES
10.	NUMBER OF ADMISSIONS	179,577	75,794	46,928	56,855
11.	ADMISSIONS OF US ACTIVE DUTY UNIFORMED PERSONNEL	52,122	21,025	14,385	16,712
A.	MILITARY	51,615	20,917	14,124	16,574
	(1) ARMY	19,695	18,383	495	817
	(2) NAVY-MARINE CORPS	15,200	1,212	13,234	754
	(3) AIR FORCE	16,720	1,522	395	15,003
B.	OTHER UNIFORMED PERSONNEL (PHS, C, NOAA)	507	108	261	138
12.	ADMISSIONS OF RETIRED US UNIFORMED PERSONNEL	24,474	10,574	5,535	8,365
A.	ADEPT. OF RETIRED MILITARY	24,272	10,520	5,453	8,299
	(1) ARMY	9,706	7,148	885	1,673
	(2) NAVY-MARINE CORPS	6,219	1,255	3,777	1,207
	(3) AIR FORCE	8,347	2,137	791	5,419
B.	ADEPT. OF OTHER RETIRED UNIFORMED PERSONNEL (PHS, C, NOAA)	202	54	82	66
13.	ADMISSIONS OF DEPENDENTS OF US ACTIVE DUTY MILITARY PERSONNEL	63,341	24,912	20,048	20,381 ^{1/}
A.	ARMY	26,311	23,690	436	1,545
B.	NAVY-MARINE CORPS	22,737	2,859	18,336	1,542
C.	AIR FORCE	20,293	2,363	776	17,154
14.	ADMISSIONS OF DEPENDENTS OF RETIRED ACTIVE DUTY US MILITARY PERSONNEL	26,415	10,557	5,695	10,163
A.	ARMY	9,806	7,032	895	1,479
B.	NAVY-MARINE CORPS	6,595	1,238	3,987	1,470
C.	AIR FORCE	9,914	2,287	413	6,414
15.	ADMISSIONS OF DEPENDENTS OF OTHER UNIFORMED MILITARY PERSONNEL	968	268	456	244
16.	ADMISSIONS OF ALL OTHER UNIFORMED PERSONNEL	6,257	4,458	809	990

^{1/} Excludes newborn infant who are hospitalized with their mother.

TABLE 2.3
 DEPARTMENT OF DEFENSE
 SELECTED DATA CONCERNING MEDICAL CARE
 PROVIDED AT FIXED MILITARY FACILITIES
 FOR QUARTER ENDING
 DECEMBER 1982

ADMISSIONS - OUTSIDE UNITED STATES		DDI TOTAL	ARMY FACILITIES	NAVY FACILITIES	AIR FORCE FACILITIES
10.	NUMBER OF ADMISSIONS	- TOTAL	18,434	6,341	4,849
11.	ADMISSIONS OF US ACTIVE DUTY UNIFORMED PERSONNEL	- TOTAL	7,136	2,395	4,514
	A. MILITARY	- TOTAL	7,136	2,395	4,514
	(1) ARMY	7,063	6,469	72	522
	(2) NAVY-MARINE CORPS	2,745	116	2,303	320
	(3) AIR FORCE	4,321	550	297	3,972
B.	OTHER UNIFORMED PERSONNEL (PHS,CG,NDAA)	- TOTAL	1	15	0
12.	ADMISSIONS OF RETIRED US UNIFORMED PERSONNEL	- TOTAL	577	157	243
	A. ADMISSIONS OF RETIRED MILITARY	- TOTAL	670	154	231
	(1) ARMY	333	220	52	61
	(2) NAVY-MARINE CORPS	157	16	37	14
	(3) AIR FORCE	180	41	15	124
B.	ADMISSIONS OF OTHER RETIRED UNIFORMED PERSONNEL (PHS,CG,NDAA)	- TOTAL	7	5	4
13.	ADMISSIONS OF DEPENDENTS OF US ACTIVE DUTY MILITARY PERSONNEL	- TOTAL	16,583	3,131	3,051/
	A. ARMY	3,423	8,608	252	363
	B. NAVY-MARINE CORPS	2,515	82	2,236	197
	C. AIR FORCE	4,645	1,117	793	2,005
14.	ADMISSIONS OF DEPENDENTS OF RETIRED AND DECEASED US MILITARY PERSONNEL	- TOTAL	576	210	141
	A. ARMY	250	133	48	29
	B. NAVY-MARINE CORPS	163	11	101	11
	C. AIR FORCE	163	41	21	101
15.	ADMISSIONS OF DEPENDENTS OF OTHER UNIFORMED MILITARY PERSONNEL	- TOTAL	34	24	10
16.	ADMISSIONS OF ALL OTHER BENEFICIARIES	- TOTAL	1,029	264	547

1/ Excludes newborn infants who are discharged with their mother.

TABLE 5.1
 DEPARTMENT OF DEFENSE
 SELECTED DATA CONCERNING MEDICAL CARE
 PROVIDED AT FIXED MILITARY FACILITIES
 FOR QUARTER ENDING
 DECEMBER 1982

	OUTPATIENT VISITS - WORLDWIDE			
	NO.	ARMY FACILITIES	NAVY FACILITIES	AIR FORCE FACILITIES
17. NUMBER OF OUTPATIENT VISITS	TOTAL	4,331,951	2,359,653	3,675,459
18. OUTPATIENT VISITS BY US ACTIVE DUTY UNIFORMED PERSONNEL	TOTAL	1,361,094	1,223,470	1,129,341
A. MILITARY	TOTAL	1,957,036	1,214,197	1,127,223
(1) ARMY		1,866,384	1,150	39,403
(2) NAVY-MARINE CORPS		56,314	1,177,997	23,279
(3) AIR FORCE		54,338	18,050	1,135,536
B. OTHER UNIFORMED PERSONNEL (PHS,CC,NAAA)	TOTAL	9,053	15,275	3,552
19. OUTPATIENT VISITS BY RETIRED US UNIFORMED PERSONNEL	TOTAL	466,794	243,252	375,819
20. OUTPATIENT VISITS BY DEPENDENTS OF US ACTIVE DUTY UNIFORMED PERSONNEL	TOTAL	1,543,927	1,059,974	1,357,524
A. DEPENDENTS OF MILITARY PERSONNEL	TOTAL	1,541,376	1,021,155	1,373,117
(1) ARMY		1,353,481	36,478	71,369
(2) NAVY-MARINE CORPS		75,049	363,702	53,575
(3) AIR FORCE		113,086	51,893	1,247,004
B. DEPENDENTS OF OTHER UNIFORMED PERSONNEL (PHS,CC,NAAA)	TOTAL	8,351	13,723	7,914
21. OUTPATIENT VISITS BY DEPENDENTS OF RETIRED AND DECEASED US UNIFORMED PERSONNEL	TOTAL	531,619	303,540	497,361
22. OUTPATIENT VISITS BY ALL OTHER BENEFICIARIES	TOTAL	342,588	239,743	124,342
23. NUMBER OF LIVE BIRTHS	TOTAL	11,502	7,503	9,316

TABLE 3.2
DEPARTMENT OF DEFENSE
SELECTED DATA CONCERNING MEDICAL CARE
PROVIDED AT FIXED MILITARY FACILITIES
FOR QUARTER ENDING
DECEMBER 1982

OUTPATIENT VISITS - UNITED STATES		DOD TOTAL	ARMY FACILITIES	NAVY FACILITIES	AIR FORCE FACILITIES
NUMBER OF OUTPATIENT VISITS	- TOTAL				
17. NUMBER OF OUTPATIENT VISITS	- TOTAL	9,697,129	3,843,761	2,688,050	3,165,318
18. OUTPATIENT VISITS BY US ACTIVE DUTY UNIFORMED PERSONNEL	- TOTAL	3,445,533	1,408,289	1,087,150	950,194
A. MILITARY	- TOTAL	3,425,135	1,404,253	1,073,266	947,616
(1) ARMY		1,366,850	1,330,455	14,584	21,811
(2) NAVY-MARINE CORPS		1,047,710	33,922	1,047,545	16,243
(3) AIR FORCE		360,575	39,876	11,137	907,562
H. OTHER UNIFORMED PERSONNEL (PHS,CG,NOAA)	- TOTAL	20,498	4,036	13,884	2,578
19. OUTPATIENT VISITS BY RETIRED US UNIFORMED PERSONNEL	- TOTAL	1,048,341	437,260	242,047	369,234
20. OUTPATIENT VISITS BY DEPENDENTS OF US ACTIVE DUTY UNIFORMED PERSONNEL	- TOTAL	3,195,515	1,183,291	855,896	1,156,438
A. DEPENDENTS OF MILITARY PERSONNEL	- TOTAL	3,167,059	1,174,339	842,937	1,149,183
(1) ARMY		1,102,392	1,013,609	31,246	57,537
(2) NAVY-MARINE CORPS		909,507	73,588	790,046	47,823
(3) AIR FORCE		1,155,160	89,742	21,595	1,043,823
H. DEPENDENTS OF OTHER UNIFORMED PERSONNEL (PHS,CG,NOAA)	- TOTAL	28,556	9,342	12,359	7,255
21. OUTPATIENT VISITS BY DEPENDENTS OF RETIRED AND DECEASED US UNIFORMED PERSONNEL	- TOTAL	1,433,769	525,628	237,225	580,716
22. OUTPATIENT VISITS BY ALL OTHER BENEFICIARIES	- TOTAL	603,571	289,303	205,752	108,536
23. NUMBER OF LIVE BIRTHS	- TOTAL	22,949	8,568	6,532	7,449

TABLE 3-5
 DEPARTMENT OF DEFENSE
 SELECTED DATA CONCERNING MEDICAL CARE
 PROVIDED AT FIXED MILITARY FACILITIES
 FOR QUARTER ENDING
 DECEMBER 1962

	OUTPATIENT VISITS - OUTSIDE UNITED STATES	DDP TOTAL	ARMY FACILITIES	NAVY FACILITIES	AIR FORCE FACILITIES
17. NUMBER OF OUTPATIENT VISITS	- TOTAL	1,778,933	388,190	280,613	510,130
18. OUTPATIENT VISITS BY US ACTIVE DUTY UNIFORMED PERSONNEL	- TOTAL	944,812	552,805	142,320	249,687
A. MILITARY	- TOTAL	943,327	552,783	140,331	249,613
(1) ARMY		550,089	535,929	3,566	16,594
(2) NAVY-MARINE CORPS		140,095	2,596	130,492	7,007
(3) AIR FORCE		247,143	14,254	6,913	225,972
B. OTHER UNIFORMED PERSONNEL (PHS,CG,NDA4)	- TOTAL	1,485	22	1,389	74
19. OUTPATIENT VISITS BY RETIRED US UNIFORMED PERSONNEL	- TOTAL	23,229	9,468	7,185	6,576
20. OUTPATIENT VISITS BY DEPENDENTS OF US ACTIVE DUTY UNIFORMED PERSONNEL	- TOTAL	687,714	366,646	87,982	231,086
A. DEPENDENTS OF MILITARY PERSONNEL	- TOTAL	686,592	366,637	83,218	230,727
(1) ARMY		366,893	359,832	5,232	21,829
(2) NAVY-MARINE CORPS		47,970	3,451	73,611	5,713
(3) AIR FORCE		272,811	23,364	10,269	203,185
B. DEPENDENTS OF OTHER UNIFORMED PERSONNEL (PHS,CG,NDA4)	- TOTAL	1,132	7	764	359
21. OUTPATIENT VISITS BY DEPENDENTS OF RETIRED AND DECEASED US UNIFORMED PERSONNEL	- TOTAL	21,946	9,986	8,115	6,445
22. OUTPATIENT VISITS BY ALL OTHER BENEFICIARIES	- TOTAL	102,192	53,295	33,011	15,456
23. NUMBER OF LIVE BIRTHS	- TOTAL	9,072	2,934	366	1,172

TABLE 1-10
 DEPARTMENT OF DEFENSE
 SELECTED DATA CONCERNING MEDICAL CARE
 PROVIDED AT FIXED MILITARY FACILITIES

FIVE YEAR COMPARISON

	OPERATING BUDS - WORLDWIDE	TOTALS BY FISCAL YEAR			
		1978	1979	1980	1981
1. NUMBER OF OPERATING BEDS	- TOTAL	28,598	19,223	18,855	18,662
2. NUMBER OF OPERATING BARRACKS	- TOTAL	2,504	2,439	1,744	1,977
3. NUMBER OF BEDS OCCUPIED (DAILY AVERAGE)	- TOTAL	15,862	15,303	15,095	14,733
4. BEDS OCCUPIED BY US ACTIVE DUTY UNIFORMED PERSONNEL - TOTAL	- TOTAL	6,511	6,321	6,249	5,911
A. MILITARY	- TOTAL	6,478	6,290	6,220	5,876
(1) ARMY		3,005	3,103	3,100	2,881
(2) NAVY-MARINE CORPS		1,712	1,509	1,522	1,473
(3) AIR FORCE		1,760	1,678	1,597	1,521
B. OTHER UNIFORMED PERSONNEL (PHS,CG,NDAAS)	- TOTAL	33	30	29	34
5. BEDS OCCUPIED BY RETIRED US UNIFORMED PERSONNEL - TOTAL	- TOTAL	2,109	2,163	2,231	2,326
A. RETIRED MILITARY	- TOTAL	2,091	2,144	2,211	2,305
(1) ARMY		941	883	918	950
(2) NAVY-MARINE CORPS		572	556	562	583
(3) AIR FORCE		577	704	730	771
B. OTHER RETIRED UNIFORMED PERSONNEL (PHS,CG,NDAAS)	- TOTAL	18	19	20	20
6. BEDS OCCUPIED BY DEPENDENTS OF US ACTIVE DUTY MILITARY PERSONNEL	- TOTAL	4,103	4,077	3,815	3,658
(1) ARMY		1,610	1,567	1,565	1,530
(2) NAVY-MARINE CORPS		1,163	1,087	1,031	1,019
(3) AIR FORCE		1,330	1,421	1,218	1,108
7. BEDS OCCUPIED BY DEPENDENTS OF RETIRED AND DECEASED US MILITARY PERSONNEL	- TOTAL	2,053	2,055	2,071	2,098
(1) ARMY		745	756	782	784
(2) NAVY-MARINE CORPS		534	530	522	538
(3) AIR FORCE		774	769	766	776
8. BEDS OCCUPIED BY DEPENDENTS OF OTHER UNIFORMED PERSONNEL (PHS,CG,NDAAS)	- TOTAL	66	60	57	54
9. BEDS OCCUPIED BY ALL OTHER BENEFICIARIES	- TOTAL	507	524	669	685

TABLE 2-10
 DEPARTMENT OF DEFENSE
 SELECTED DATA CONCERNING MEDICAL CARE
 PROVIDED AT FIXED MILITARY FACILITIES

FIVE YEAR COMPARISON

	TOTALS BY FISCAL YEAR				
	1977	1979	1980	1981	1982
ADMISSIONS - WORLDWIDE					
10. NUMBER OF ADMISSIONS:					
- TOTAL	911,291	885,735	883,562	878,631	901,119
11. ADMISSIONS OF US ACTIVE DUTY UNIFORMED PERSONNEL					
- TOTAL	504,293	293,275	298,089	291,798	284,993
A. MILITARY					
- TOTAL	502,760	291,719	296,518	289,989	282,742
(1) ARMY	120,735	119,678	124,393	120,698	117,876
(2) NAVY-MARINE CORPS	83,175	78,671	77,621	77,151	75,717
(3) AIR FORCE	98,846	93,370	94,504	92,140	89,149
B. OTHER UNIFORMED PERSONNEL (PHS,CS,NOAA)					
- TOTAL	1,533	1,556	1,571	1,799	2,141
12. ADMISSIONS OF RETIRED US UNIFORMED PERSONNEL					
- TOTAL	84,043	88,168	93,300	97,946	102,523
4. ADMISSIONS OF RETIRED MILITARY					
- TOTAL	83,362	87,392	92,410	97,106	101,545
(1) ARMY	31,447	34,431	36,944	38,866	41,071
(2) NAVY-MARINE CORPS	23,326	23,295	24,012	25,154	25,577
(3) AIR FORCE	28,189	29,666	31,454	33,086	34,898
5. ADMISSIONS OF OTHER RETIRED UNIFORMED PERSONNEL (PHS,CS,NOAA)					
- TOTAL	681	776	890	840	977
13. ADMISSIONS OF DEPENDENTS OF US ACTIVE DUTY MILITARY PERSONNEL					
- TOTAL	375,541	356,813	338,323	330,343	352,352
A. ARMY	146,692	136,326	134,793	138,149	145,317
B. NAVY-MARINE CORPS	102,884	98,205	94,460	95,162	99,491
C. AIR FORCE	125,965	122,282	109,070	97,187	107,544
14. ADMISSIONS OF DEPENDENTS OF RETIRED AND DECEASED MILITARY PERSONNEL					
- TOTAL	104,775	107,679	110,544	111,778	113,552
A. ARMY	37,507	37,720	39,902	40,294	42,067
B. NAVY-MARINE CORPS	21,523	28,700	28,679	29,193	28,470
C. AIR FORCE	41,745	41,259	41,968	42,291	42,525
15. ADMISSIONS OF DEPENDENTS OF OTHER UNIFORMED MILITARY PERSONNEL					
- TOTAL	4,041	4,493	4,019	4,012	4,196
16. ADMISSIONS OF ALL OTHER BENEFICIARIES					
- TOTAL	34,100	35,507	39,282	42,564	43,503

TABLE 3-10
 DEPARTMENT OF DEFENSE
 SELECTED DATA CONCERNING MEDICAL CARE
 PROVIDED AT FIXED MILITARY FACILITIES

FIVE YEAR COMPARISON

	TOTALS BY FISCAL YEAR				
	1978	1979	1980	1981	1982
17. NUMBER OF OUTPATIENT VISITS	- TOTAL 46,446,498	46,234,001	47,666,922	47,433,156	47,966,944
18. OUTPATIENT VISITS BY US ACTIVE DUTY UNIFORMED PERSONNEL	- TOTAL 18,588,296	18,593,048	19,412,638	19,150,168	19,003,397
A. MILITARY	- TOTAL 18,521,671	18,477,495	19,343,746	19,078,774	18,913,979
(1) ARMY	8,252,139	8,192,706	8,669,937	8,506,938	8,465,866
(2) NAVY-MARINE CORPS	5,308,112	5,263,347	5,531,470	5,449,576	5,347,750
(3) AIR FORCE	4,961,420	5,021,442	5,142,339	5,122,260	5,100,353
B. OTHER UNIFORMED PERSONNEL (PHS,CG,NMCAA)	- TOTAL 66,535	65,553	68,892	71,394	89,418
19. OUTPATIENT VISITS BY RETIRED US UNIFORMED PERSONNEL	- TOTAL 3,517,329	3,548,717	3,757,144	3,895,284	4,187,162
20. OUTPATIENT VISITS BY DEPENDENTS OF US ACTIVE DUTY UNIFORMED PERSONNEL	- TOTAL 16,212,709	15,790,147	15,682,265	15,411,293	15,656,213
A. DEPENDENTS OF MILITARY PERSONNEL	- TOTAL 16,073,433	15,663,163	15,559,722	15,290,707	15,527,379
(1) ARMY	5,856,943	5,854,228	5,835,589	5,735,435	5,908,325
(2) NAVY-MARINE CORPS	4,013,416	3,923,678	4,013,410	3,985,128	4,011,205
(3) AIR FORCE	5,203,074	5,885,257	5,710,723	5,570,144	5,607,849
B. DEPENDENTS OF OTHER UNIFORMED PERSONNEL (PHS,CG,NMCAA)	- TOTAL 139,276	126,984	122,543	120,586	128,834
21. OUTPATIENT VISITS BY DEPENDENTS OF RETIRED AND DECEASED US UNIFORMED PERSONNEL	- TOTAL 5,426,586	5,405,073	5,569,875	5,687,080	5,785,984
22. OUTPATIENT VISITS BY ALL OTHER BENEFICIARIES	- TOTAL 2,701,669	2,947,016	3,245,000	3,289,331	3,334,189
23. NUMBER OF LIVE BIRTHS	- TOTAL 101,299	96,258	100,176	100,590	106,962

G L O S S A R Y

Operating Bed. A bed that is currently set up and ready in all respects for the care of a patient. It must include supporting space, equipment and staff to operate under normal circumstances. Excluded, are nursery bassinets and transient patients' beds.

Occupied Bed. A bed assigned as of midnight to a patient, to include a patient on pass or liberty not in excess of 72 hours, and any bassinets assigned to a newborn infant whose mother has been discharged from the hospital. The definition excludes: any bed assigned to a patient subsisting out, on leave, or absent without leave, and any bed occupied by a transient patient.

Operating Bassinet. A bed designed for the care of an infant that is currently set up in the newborn nursery and ready in all respects for use. It must include support space, equipment and staff to operate under normal circumstances. Excluded are infant transporters.

Admission. An admission is the act of placing an individual under treatment or observation in a medical center or a hospital. The day of admission is the day on which the medical center or hospital makes a formal acceptance of the patient who is to be provided with room, board, and continuous nursing service in an area of the hospital where patients normally stay at least overnight. If both an admission and discharge occur on the same day, then that day is considered as a day of admission and shall be counted as one occupied bed day. The admission of a newborn is deemed to occur at the time of birth.

Outpatient Visits. Visits made to each dispensary or separate, organized clinic of a fixed medical treatment facility for medical advice, examination, diagnosis, treatment, evaluation, consultation, or counseling including visits by military patients who are excused from duty for medical reasons but who have not been admitted for inpatient care in a facility authorized beds for inpatient care and any visits made incident to complete or flight physicals.

Live Births. A live birth is the complete expulsion or extraction from its mother of a product of conception, irrespective of the duration of pregnancy which after such separation, breathes or shows any other evidence of life such as beating of the heart, pulsation of the umbilical cord, or definite movement of voluntary muscles, whether or not the umbilical cord has been cut or the placenta is attached; each such product of such a birth is considered liveborn.

N