

AD-A152 672

SELECTED MEDICAL CARE STATISTICS, FOURTH QUARTER, FY-82. 1/1
(U) WASHINGTON HEADQUARTERS SERVICE (DOD) DIR FOR INFO
OP & RPTS. SEP 82. DIOR/L02-82/04

UNCLASSIFIED

F/G 6/5

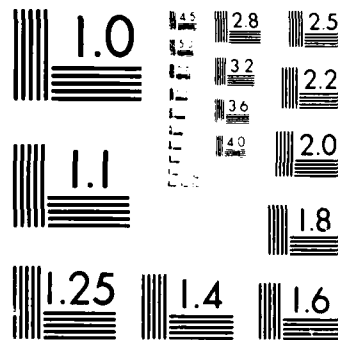
N/L

1 OF 1
AD-A152 672

END
FILMED
11/04/85

1 OF 1

AD-A152 672



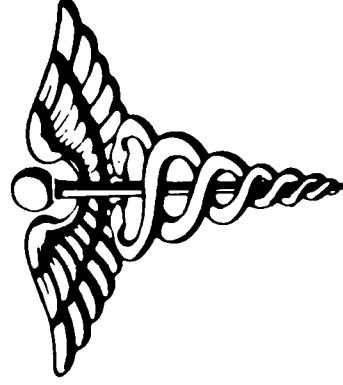
MICROCOPY RESOLUTION TEST CHART
NATIONAL BUREAU OF STANDARDS-1963-A

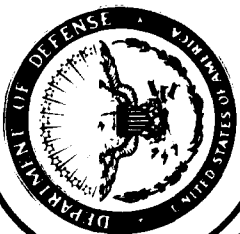
THIS REPORT IS UNCLASSIFIED AND
ITS DISTRIBUTION IS UNLIMITED

DEPARTMENT OF DEFENSE

SELECTED MEDICAL CARE STATISTICS

(QUARTER ENDING SEPTEMBER 30, 1982)





DEPARTMENT OF DEFENSE

SELECTED MEDICAL CARE STATISTICS



OSD

WASHINGTON HEADQUARTERS SERVICES



**DIRECTORATE FOR INFORMATION
OPERATIONS AND REPORTS (DIOR)
THE PENTAGON, WASHINGTON, D.C.**

F O R E W O R D

SELECTED MEDICAL CARE STATISTICS (SMCS) is a quarterly publication prepared by the Washington Headquarters Services, Directorate for Information Operations and Reports (WHS/DIOR) of the Office of the Secretary of Defense.

SMCS presents quarterly summary data concerning medical care provided at fixed military medical facilities located in (1) the United States and (2) outside the United States, in territories, possessions and foreign countries.

This publication is generated from a computerized data base developed and maintained in consonance with Department of Defense Instruction (DoDI) 6015.14, May 19, 1979, under Reports Control Symbol DD-COMP(Q)1474 by the Manpower Management Information Division of WHS/DIOR.

The report is approved for public release. Distribution is unlimited at cost. Requests for additional copies and changes in distribution and addresses should be directed to the Director, Information Operations and Reports, WHS, Room 1C535, The Pentagon, Washington, D.C. 20301.

C O N T E N T S

<u>Number</u>		<u>Page</u>
Table 1.1	Operating Beds/Operating Bassinets/Beds Occupied - Worldwide	1
Table 1.2	Operating Beds/Operating Bassinets/Beds Occupied - United States	2
Table 1.3	Operating Beds/Operating Bassinets/Beds Occupied - Outside United States	3
Table 2.1	Admissions - Worldwide	4
Table 2.2	Admissions - United States	5
Table 2.3	Admissions - Outside United States	6
Table 3.1	Outpatient Visits and Live Births - Worldwide	7
Table 3.2	Outpatient Visits and Live Births - United States	8
Table 3.3	Outpatient Visits and Live Births - Outside United States	9
	Glossary	10

TABLE 1.1
 DEPARTMENT OF DEFENSE
 SELECTED DATA CONCERNING MEDICAL CARE
 PROVIDED AT FIXED MILITARY FACILITIES
 FOR QUARTER ENDING
 SEPTEMBER 1982

OPERATING BEDS - WORLDWIDE		DOD TOTAL	ARMY FACILITIES	NAVY FACILITIES	AIR FORCE FACILITIES
1.	NUMBER OF OPERATING BEDS - TOTAL	18,505	8,884	3,954	5,667
2.	NUMBER OF OPERATING BASSINETS - TOTAL	2,054	697	327	1,030
3.	NUMBER OF BEDS OCCUPIED (DAILY AVERAGE) - TOTAL	14,715	7,150	3,107	4,458
4.	BEDS OCCUPIED BY US ACTIVE DUTY UNIFORMED PERSONNEL - TOTAL	5,362	2,761	1,208	1,393
A.	MILITARY - TOTAL	5,312	2,749	1,182	1,381
	(1) ARMY	2,558	2,388	46	124
	(2) NAVY-MARINE CORPS	1,336	148	1,085	103
	(3) AIR FORCE	1,418	213	51	1,154
H.	OTHER UNIFORMED PERSONNEL (PHS,CG,NOAA) - TOTAL	50	12	26	12
5.	BEDS OCCUPIED BY RETIRED US UNIFORMED PERSONNEL - TOTAL	2,338	1,133	469	736
4.	RETIRED MILITARY - TOTAL	2,315	1,128	458	729
	(1) ARMY	996	773	74	149
	(2) NAVY-MARINE CORPS	555	131	323	101
	(3) AIR FORCE	764	224	61	479
3.	OTHER RETIRED UNIFORMED PERSONNEL (PHS,CG,NOAA) - TOTAL	23	5	11	7
6.	BEDS OCCUPIED BY DEPENDENTS OF US ACTIVE DUTY MILITARY PERSONNEL - TOTAL	4,158	1,796	942	1,420
	(1) ARMY	1,646	1,444	55	147
	(2) NAVY-MARINE CORPS	1,086	153	819	114
	(3) AIR FORCE	1,426	199	68	1,159
7.	BEDS OCCUPIED BY DEPENDENTS OF RETIRED AND DECEASED US MILITARY PERSONNEL - TOTAL	2,078	885	414	779
	(1) ARMY	796	571	71	154
	(2) NAVY-MARINE CORPS	514	114	285	115
	(3) AIR FORCE	768	200	58	510
8.	BEDS OCCUPIED BY DEPENDENTS OF OTHER UNIFORMED PERSONNEL (PHS,CG,NOAA) - TOTAL	57	15	24	18
9.	BEDS OCCUPIED BY ALL OTHER BENEFICIARIES - TOTAL	722	560	50	112

TABLE 1.2
DEPARTMENT OF DEFENSE
SELECTED DATA CONCERNING MEDICAL CARE
PROVIDED AT FIXED MILITARY FACILITIES
FOR QUARTER ENDING
SEPTEMBER 1982

OPERATING BEDS - UNITED STATES		DDJ TOTAL	ARMY FACILITIES	NAVY FACILITIES	AIR FORCE FACILITIES
1.	NUMBER OF OPERATING BEDS - TOTAL	15,577	7,163	3,524	4,990
2.	NUMBER OF OPERATING BASSINETS - TOTAL	1,618	468	278	872
3.	NUMBER OF BEDS OCCUPIED (DAILY AVERAGE) - TOTAL	12,590	5,932	2,788	3,870
4.	BEDS OCCUPIED BY US ACTIVE DUTY UNIFORMED PERSONNEL - TOTAL	4,255	2,089	1,067	1,099
	A. MILITARY	4,207	2,077	1,043	1,087
	(1) ARMY	1,879	1,760	40	79
	(2) NAVY-MARINE CORPS	1,184	139	968	77
	(3) AIR FORCE	1,144	178	35	331
5.	BEDS OCCUPIED BY OTHER UNIFORMED PERSONNEL (PHS,CG,NOAA) - TOTAL	48	12	24	12
	BEDS OCCUPIED BY RETIRED US UNIFORMED PERSONNEL - TOTAL	2,272	1,106	455	711
	A. RETIRED MILITARY	2,249	1,101	444	704
	(1) ARMY	961	752	69	140
	(2) NAVY-MARINE CORPS	539	128	315	96
	(3) AIR FORCE	749	221	60	463
6.	OTHER RETIRED UNIFORMED PERSONNEL (PHS,CG,NOAA) - TOTAL	23	5	11	7
	BEDS OCCUPIED BY DEPENDENTS OF US ACTIVE DUTY MILITARY PERSONNEL - TOTAL	3,377	1,383	807	1,187
	(1) ARMY	1,241	1,089	43	109
	(2) NAVY-MARINE CORPS	979	148	732	99
	(3) AIR FORCE	1,157	146	32	979
7.	BEDS OCCUPIED BY DEPENDENTS OF RETIRED AND DECEASED US MILITARY PERSONNEL - TOTAL	2,034	870	401	763
	(1) ARMY	776	561	65	150
	(2) NAVY-MARINE CORPS	502	112	279	111
	(3) AIR FORCE	756	197	57	502
8.	BEDS OCCUPIED BY DEPENDENTS OF OTHER UNIFORMED PERSONNEL (PHS,CG,NOAA) - TOTAL	54	15	22	17
9.	BEDS OCCUPIED BY ALL OTHER BENEFACTARIES - TOTAL	598	469	36	93

TABLE 1.3
DEPARTMENT OF DEFENSE
SELECTED DATA CONCERNING MEDICAL CARE
PROVIDED AT FIXED MILITARY FACILITIES
FOR QUARTER ENDING
SEPTEMBER 1982

OPERATING BEDS - OUTSIDE UNITED STATES		DOD TOTAL	ARMY FACILITIES	NAVY FACILITIES	AIR FORCE FACILITIES
1.	NUMBER OF OPERATING BEDS - TOTAL	2,828	1,721	430	577
2.	NUMBER OF OPERATING BASSINETS - TOTAL	436	229	49	158
3.	NUMBER OF BEDS OCCUPIED (DAILY AVERAGE) - TOTAL	2,125	1,218	319	588
4.	BEDS OCCUPIED BY US ACTIVE DUTY UNIFORMED PERSONNEL - TOTAL	1,107	672	141	294
	A. MILITARY	1,105	672	139	294
	(1) ARMY	679	628	6	45
	(2) NAVY-MARINE CORPS	152	9	117	26
	(3) AIR FORCE	274	35	16	223
	B. OTHER UNIFORMED PERSONNEL (PHS,CG,NOAA) - TOTAL	2	0	2	0
5.	BEDS OCCUPIED BY RETIRED US UNIFORMED PERSONNEL - TOTAL	66	27	14	25
	A. RETIRED MILITARY	65	27	14	25
	(1) ARMY	35	21	5	9
	(2) NAVY-MARINE CORPS	16	3	8	5
	(3) AIR FORCE	15	3	1	11
	B. OTHER RETIRED UNIFORMED PERSONNEL (PHS,CG,NOAA) - TOTAL	0	0	0	0
6.	BEDS OCCUPIED BY DEPENDENTS OF US ACTIVE DUTY MILITARY PERSONNEL - TOTAL	781	413	135	233
	(1) ARMY	405	355	12	39
	(2) NAVY-MARINE CORPS	107	5	87	15
	(3) AIR FORCE	269	53	36	180
7.	BEDS OCCUPIED BY DEPENDENTS OF RETIRED AND DECEASED US MILITARY PERSONNEL - TOTAL	44	15	13	15
	(1) ARMY	20	10	6	4
	(2) NAVY-MARINE CORPS	12	2	4	4
	(3) AIR FORCE	12	3	1	8
8.	BEDS OCCUPIED BY DEPENDENTS OF OTHER UNIFORMED PERSONNEL (PHS,CG,NOAA) - TOTAL	3	0	2	1
9.	BEDS OCCUPIED BY ALL OTHER BENEFICIARIES - TOTAL	124	91	14	19

TABLE 2-1
DEPARTMENT OF DEFENSE
SELECTED DATA CONCERNING MEDICAL CARE
PROVIDED AT FIXED MILITARY FACILITIES
FOR QUARTER ENDING
SEPTEMBER 1982

ADMISSIONS - WORLDWIDE		DDO TOTAL	ARMY FACILITIES	NAVY FACILITIES	AIR FORCE FACILITIES
10.	NUMBER OF ADMISSIONS	235,063	101,675	55,929	77,459
11.	ADMISSIONS OF US ACTIVE DUTY UNIFORMED PERSONNEL	70,552	30,054	18,265	22,233
	A. MILITARY	69,966	29,936	17,954	22,076
	(1) ARMY	28,496	26,465	604	1,427
	(2) NAVY-MARINE CORPS	19,114	1,388	16,648	1,078
	(3) AIR FORCE	22,356	2,083	702	19,571
	B. OTHER UNIFORMED PERSONNEL (PHS,CG,NOAA)	586	118	311	157
12.	ADMISSIONS OF RETIRED US UNIFORMED PERSONNEL	25,544	11,290	5,628	8,626
	A. ADMISSIONS OF RETIRED MILITARY	25,289	11,232	5,504	8,553
	(1) ARMY	10,229	7,711	870	1,548
	(2) NAVY-MARINE CORPS	6,300	1,248	3,864	1,188
	(3) AIR FORCE	8,760	2,273	770	5,717
	B. ADMISSIONS OF OTHER RETIRED UNIFORMED PERSONNEL (PHS,CG,NOAA)	255	58	124	73
13.	ADMISSIONS OF DEPENDENTS OF US ACTIVE DUTY MILITARY PERSONNEL	97,057	40,143	24,149	32,765
	A. ARMY	37,666	33,173	1,221	3,272
	B. NAVY-MARINE CORPS	26,820	3,071	21,377	2,372
	C. AIR FORCE	32,571	3,899	1,551	27,121
14.	ADMISSIONS OF DEPENDENTS OF RETIRED AND DECEASED US MILITARY PERSONNEL	28,821	11,363	6,281	11,177
	A. ARMY	10,751	7,568	1,084	2,099
	B. NAVY-MARINE CORPS	7,256	1,335	4,322	1,599
	C. AIR FORCE	10,814	2,460	875	7,479
15.	ADMISSIONS OF DEPENDENTS OF OTHER UNIFORMED MILITARY PERSONNEL	1,068	289	441	338
16.	ADMISSIONS OF ALL OTHER BENEFICIARIES	12,021	8,536	1,165	2,320

TABLE 2.2
DEPARTMENT OF DEFENSE
SELECTED DATA CONCERNING MEDICAL CARE
PROVIDED AT FIXED MILITARY FACILITIES
FOR QUARTER ENDING
SEPTEMBER 1982

ADMISSIONS - UNITED STATES		DDO TOTAL	ARMY FACILITIES	NAVY FACILITIES	AIR FORCE FACILITIES
10.	NUMBER OF ADMISSIONS	- TOTAL	82,552	48,905	66,386
11.	ADMISSIONS OF US ACTIVE DUTY UNIFORMED PERSONNEL	- TOTAL	22,237	15,367	17,732
	A. MILITARY	- TOTAL	22,121	15,073	17,578
	(1) ARMY	20,626	19,269	516	441
	(2) NAVY-MARINE CORPS	16,252	1,298	14,152	902
	(3) AIR FORCE	17,894	1,554	405	15,235
	B. OTHER UNIFORMED PERSONNEL (PHS,CG,NOAA)	564	116	294	154
12.	ADMISSIONS OF RETIRED US UNIFORMED PERSONNEL	- TOTAL	10,996	5,469	8,380
	A. ADMISSIONS OF RETIRED MILITARY	24,593	10,938	5,348	8,307
	(1) ARMY	9,871	7,472	814	1,585
	(2) NAVY-MARINE CORPS	6,142	1,233	3,783	1,125
	(3) AIR FORCE	8,580	2,233	751	5,596
	B. ADMISSIONS OF OTHER RETIRED UNIFORMED PERSONNEL (PHS,CG,NOAA)	242	58	121	73
13.	ADMISSIONS OF DEPENDENTS OF US ACTIVE DUTY MILITARY PERSONNEL	- TOTAL	30,420	20,727	27,807
	A. ARMY	28,216	24,748	953	2,515
	B. NAVY-MARINE CORPS	24,143	2,969	19,060	2,114
	C. AIR FORCE	26,595	2,703	714	23,178
14.	ADMISSIONS OF DEPENDENTS OF RETIRED AND DECEASED US MILITARY PERSONNEL	- TOTAL	11,184	6,040	10,777
	A. ARMY	10,475	7,449	968	2,058
	B. NAVY-MARINE CORPS	7,093	1,322	4,213	1,559
	C. AIR FORCE	10,533	2,415	859	7,361
15.	ADMISSIONS OF DEPENDENTS OF OTHER UNIFORMED MILITARY PERSONNEL	- TOTAL	289	429	323
16.	ADMISSIONS OF ALL OTHER BENEFICIARIES	- TOTAL	7,426	873	1,767

TABLE 2-3
DEPARTMENT OF DEFENSE
SELECTED DATA CONCERNING MEDICAL CARE
PROVIDED AT FIXED MILITARY FACILITIES
FOR QUARTER ENDING
SEPTEMBER 1982

	ADMISSIONS - OUTSIDE UNITED STATES	DOD TOTAL	ARMY FACILITIES	NAVY FACILITIES	AIR FORCE FACILITIES
10. NUMBER OF ADMISSIONS	- TOTAL	36,620	19,123	7,024	10,473
11. ADMISSIONS OF US ACTIVE DUTY UNIFORMED PERSONNEL	- TOTAL	15,216	7,817	2,898	4,501
A. MILITARY	- TOTAL	15,194	7,815	2,881	4,498
(1) ARMY		7,870	7,196	88	586
(2) NAVY-MARINE CORPS		2,862	90	2,496	276
(3) AIR FORCE		4,462	529	297	3,636
H. OTHER UNIFORMED PERSONNEL (PHS,CG,NOAA)	- TOTAL	22	2	17	3
12. ADMISSIONS OF RETIRED US UNIFORMED PERSONNEL	- TOTAL	699	294	159	245
A. ADMISSIONS OF RETIRED MILITARY		696	294	156	246
(1) ARMY		358	239	56	63
(2) NAVY-MARINE CORPS		158	15	81	62
(3) AIR FORCE		180	40	19	121
9. ADMISSIONS OF OTHER RETIRED UNIFORMED PERSONNEL (PHS,CG,NOAA)	- TOTAL	3	0	3	0
13. ADMISSIONS OF DEPENDENTS OF US ACTIVE DUTY MILITARY PERSONNEL	- TOTAL	18,103	9,723	3,422	4,958
A. ARMY		9,450	8,425	268	757
B. NAVY-MARINE CORPS		2,677	102	2,517	259
C. AIR FORCE		5,976	1,196	837	3,943
14. ADMISSIONS OF DEPENDENTS OF RETIRED AND DECEASED US MILITARY PERSONNEL	- TOTAL	620	179	241	200
A. ARMY		276	119	116	41
B. NAVY-MARINE CORPS		163	13	109	41
C. AIR FORCE		181	47	16	118
15. ADMISSIONS OF DEPENDENTS OF OTHER UNIFORMED MILITARY PERSONNEL	- TOTAL	27	0	12	15
16. ADMISSIONS OF ALL OTHER BENEFICIARIES	- TOTAL	1,955	1,110	292	553

TABLE 3.1
 DEPARTMENT OF DEFENSE
 SELECTED DATA CONCERNING MEDICAL CARE
 PROVIDED AT FIXED MILITARY FACILITIES
 FOR QUARTER ENDING
 SEPTEMBER 1982

		000 TOTAL	ARMY FACILITIES	NAVY FACILITIES	AIR FORCE FACILITIES
17.	NUMBER OF OUTPATIENT VISITS	12,085,942	5,213,145	3,153,623	3,719,174
18.	OUTPATIENT VISITS BY US ACTIVE DUTY UNIFORMED PERSONNEL				
A.	MILITARY	4,797,328	2,168,366	1,371,356	1,257,606
(1)	ARMY	4,774,479	2,164,106	1,355,416	1,254,957
(2)	NAVY-MARINE CORPS	2,128,675	2,069,653	19,968	39,054
(3)	AIR FORCE	1,379,460	38,977	1,316,899	23,584
		1,266,344	55,476	18,549	1,192,319
B.	OTHER UNIFORMED PERSONNEL (PHS,CG,NOAA)	22,849	4,260	15,940	2,649
19.	OUTPATIENT VISITS BY RETIRED US UNIFORMED PERSONNEL	1,069,070	460,221	241,189	367,650
20.	OUTPATIENT VISITS BY DEPENDENTS OF US ACTIVE DUTY UNIFORMED PERSONNEL				
A.	DEPENDENTS OF MILITARY PERSONNEL	3,883,344	1,576,729	948,833	1,357,782
(1)	ARMY	3,852,594	1,567,392	934,723	1,350,479
(2)	NAVY-MARINE CORPS	1,486,064	1,369,796	36,330	79,938
(3)	AIR FORCE	999,314	79,878	866,328	53,108
B.	DEPENDENTS OF OTHER UNIFORMED PERSONNEL (PHS,CG,NOAA)	1,367,216	117,718	32,065	1,217,433
21.	OUTPATIENT VISITS BY DEPENDENTS OF RETIRED AND DECEASED US UNIFORMED PERSONNEL	30,750	9,337	14,110	7,303
22.	OUTPATIENT VISITS BY ALL DEPENDENTS	1,472,405	557,697	310,343	604,365
23.	NUMBER OF LIVE PATIENTS	863,795	450,132	281,902	131,761
		29,213	11,875	8,150	9,188

TABLE 3.2
 DEPARTMENT OF DEFENSE
 SELECTED DATA CONCERNING MEDICAL CARE
 PROVIDED AT FIXED MILITARY FACILITIES
 FOR QUARTER ENDING
 SEPTEMBER 1982

	OUTPATIENT VISITS - UNITED STATES	DDO TOTAL	ARMY FACILITIES	NAVY FACILITIES	AIR FORCE FACILITIES
17. NUMBER OF OUTPATIENT VISITS	- TOTAL	10,275,613	4,198,814	2,864,626	3,212,173
18. OUTPATIENT VISITS BY US ACTIVE DUTY UNIFORMED PERSONNEL					
A. MILITARY	- TOTAL	3,811,172	1,586,409	1,219,694	1,005,069
(1) ARMY	- TOTAL	3,789,401	1,582,151	1,204,759	1,002,491
(2) NAVY-MARINE CORPS		1,543,018	1,504,305	16,173	22,540
(3) AIR FORCE		1,229,025	36,306	1,176,515	16,204
		1,017,358	41,540	12,071	963,747
B. OTHER UNIFORMED PERSONNEL (PHS,CG,NOAA)	- TOTAL	21,771	4,258	14,935	2,578
19. OUTPATIENT VISITS BY RETIRED US UNIFORMED PERSONNEL	- TOTAL	1,047,148	451,239	234,585	361,324
20. OUTPATIENT VISITS BY DEPENDENTS OF US ACTIVE DUTY UNIFORMED PERSONNEL					
A. DEPENDENTS OF MILITARY PERSONNEL	- TOTAL	3,206,370	1,214,941	858,609	1,132,820
(1) ARMY	- TOTAL	3,176,470	1,205,607	845,187	1,125,676
(2) NAVY-MARINE CORPS		1,123,265	1,034,003	30,989	59,273
(3) AIR FORCE		916,474	76,979	791,675	47,820
		1,136,731	94,625	22,523	1,019,583
B. DEPENDENTS OF OTHER UNIFORMED PERSONNEL (PHS,CG,NOAA)	- TOTAL	29,300	9,334	13,422	7,144
21. OUTPATIENT VISITS BY DEPENDENTS OF RETIRED AND DECEASED US UNIFORMED PERSONNEL	- TOTAL	1,451,187	551,066	302,699	597,422
22. OUTPATIENT VISITS BY ALL OTHER BENEFICIARIES	- TOTAL	759,736	395,159	249,039	115,539
23. NUMBER OF LIVE BIRTHS	- TOTAL	23,801	8,876	6,967	7,958

TABLE 3.3
 DEPARTMENT OF DEFENSE
 SELECTED DATA CONCERNING MEDICAL CARE
 PROVIDED AT FIXED MILITARY FACILITIES
 FOR QUARTER ENDING
 SEPTEMBER 1982

	OUTPATIENT VISITS - OUTSIDE UNITED STATES	000 TOTAL	ARMY FACILITIES	NAVY FACILITIES	AIR FORCE FACILITIES
17. NUMBER OF OUTPATIENT VISITS	- TOTAL	1,810,329	1,014,331	288,997	507,001
18. OUTPATIENT VISITS BY US ACTIVE DUTY UNIFORMED PERSONNEL	- TOTAL	986,156	581,957	151,662	252,537
A. MILITARY	- TOTAL	985,078	581,955	150,657	252,466
(1) ARMY		585,657	565,348	3,795	16,514
(2) NAVY-MARINE CORPS		150,435	2,671	140,384	7,380
(3) AIR FORCE		248,986	13,936	6,478	228,572
4. OTHER UNIFORMED PERSONNEL (PHS,CG,NOAA)	- TOTAL	1,078	2	1,005	71
19. OUTPATIENT VISITS BY RETIRED US UNIFORMED PERSONNEL	- TOTAL	21,922	8,982	6,604	6,336
20. OUTPATIENT VISITS BY DEPENDENTS OF US ACTIVE DUTY UNIFORMED PERSONNEL	- TOTAL	676,974	361,788	90,124	224,962
A. DEPENDENTS OF MILITARY PERSONNEL	- TOTAL	676,124	361,785	89,536	224,803
(1) ARMY		362,799	335,793	5,341	21,665
(2) NAVY-MARINE CORPS		82,840	2,899	74,653	5,288
(3) AIR FORCE		230,485	23,093	9,542	197,850
9. DEPENDENTS OF OTHER UNIFORMED PERSONNEL (PHS,CG,NOAA)	- TOTAL	850	3	688	159
21. OUTPATIENT VISITS BY DEPENDENTS OF RETIRED AND DECEASED US UNIFORMED PERSONNEL	- TOTAL	21,218	6,631	7,644	6,943
22. OUTPATIENT VISITS BY ALL OTHER BENEFICIARIES	- TOTAL	104,059	54,973	32,863	16,223
23. NUMBER OF LIVE BIRTHS	- TOTAL	5,412	2,999	1,183	1,230

G L O S S A R Y

Operating Bed. A bed that is currently set up and ready in all respects for the care of a newborn infant. It must include supporting space, equipment and staff to operate under normal circumstances. Excluded, are nursery bassinets and transient patients' beds.

Occupied Bed. A bed assigned as of midnight to a patient, to include a patient on pass or transfer not in excess of 72 hours, and any bassinet assigned to a newborn infant whose mother has been discharged from the hospital. The definition excludes: any bed assigned to a patient subsisting out, on leave, or absent without leave, and any bed occupied by a transient patient.

Operating Bassinet. A bed designed for the care of an infant that is currently set up in the newborn nursery and ready in all respects for use. It must include support space, equipment and staff to operate under normal circumstances. Excluded are infant transporters.

Admission. An admission is the act of placing an individual under treatment or observation in a medical center or a hospital. The day of admission is the day on which the medical center or hospital makes a formal acceptance of the patient who is to be provided with room, board, and continuous nursing service in an area of the hospital where patients normally stay at least overnight. If both an admission and discharge occur on the same day, then that day is considered as a day of admission and shall be counted as one occupied bed day. The admission of a newborn is deemed to occur at the time of birth.

Outpatient Visits. Visits made to each dispensary or separate, organized clinic of a fixed medical treatment facility for medical advice, examination, diagnosis, treatment, evaluation, consultation, or counseling including visits by military patients who are excused from duty for medical reasons but who have not been admitted for inpatient care in a facility authorized beds for inpatient care and any visits made incident to complete or flight physicals.

Live Births. A live birth is the complete expulsion or extraction from its mother of a product of conception, irrespective of the duration of pregnancy which after such separation, breathes or shows any other evidence of life such as beating of the heart, pulsation of the umbilical cord, or definite movement of voluntary muscles, whether or not the umbilical cord has been cut or the placenta is attached; each such product of such a birth is considered liveborn.

