

AD-A152 764

SELECTED MEDICAL CARE STATISTICS, FOURTH QUARTER, FY-83.  
(U) WASHINGTON HEADQUARTERS SERVICE (DOD) DIR FOR INFO  
OP & RPTS. SEP 83. DIOR/L02-83/04

1/1

UNCLASSIFIED

F/G 6/5

N/L

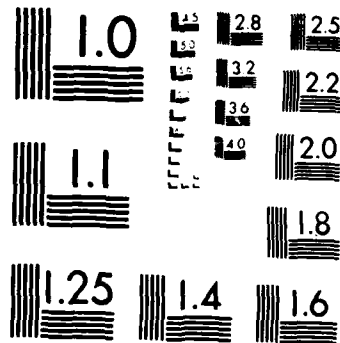
1 OF 1  
AD A152 764



END  
FILMED  
11 04 85

# 1 OF 1

# AD-A152 764



MICROCOPY RESOLUTION TEST CHART  
NATIONAL BUREAU OF STANDARDS 1963-A

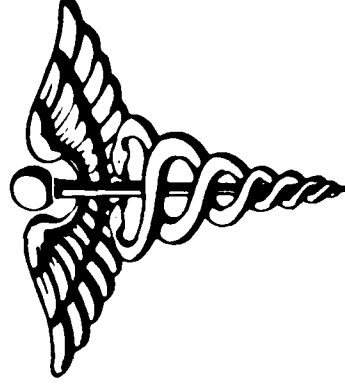
**THIS REPORT IS UNCLASSIFIED AND  
ITS DISTRIBUTION IS UNLIMITED**



**DEPARTMENT OF DEFENSE**

# **SELECTED MEDICAL CARE STATISTICS**

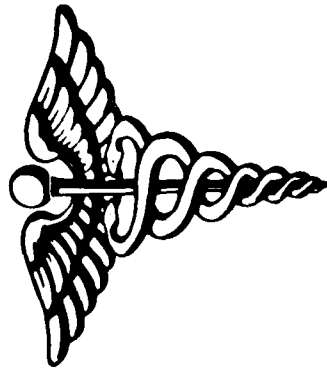
**Quarter Ending September 30, 1983**



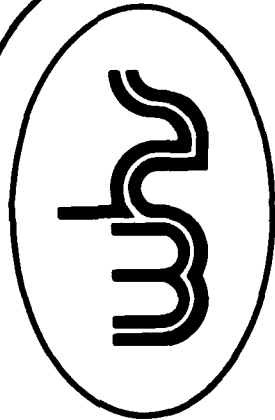


**DEPARTMENT OF DEFENSE**

**SELECTED MEDICAL CARE STATISTICS**



**OSD WASHINGTON HEADQUARTERS SERVICES**



**DIRECTORATE FOR INFORMATION  
OPERATIONS AND REPORTS (DIOR)  
THE PENTAGON, WASHINGTON, D.C.**

F O R E W O R D

SELECTED MEDICAL CARE STATISTICS (SMCS) is a quarterly publication prepared by the Washington Headquarters Services, Directorate for Information Operations and Reports (WHS/DIOR) of the Office of the Secretary of Defense.

SMCS presents quarterly summary data concerning medical care provided at fixed military medical facilities located in (1) the United States and (2) outside the United States, in territories, possessions and foreign countries.

This publication is generated for a computerized data base developed and maintained in consonance with Department of Defense Instruction (DoDI) 6015.4, May 19, 1979, under Reports Control Symbol DD-COMP(Q)1474 by the Manpower Management Information Division of WHS/DIOR.

The report is approved for public release at cost; distribution unlimited. However, all requests for this publication and DoD-wide data contained therein should be referred to WHS/DIOR or cognizant offices in the Office of the Secretary of Defense. Questions concerning the material in this publication, and requests for additional copies, should be addressed to the Director for Information Operations and Reports, Washington Headquarters Services, Room 1C535, Washington, D.C. 20301. When ordering cite publication number M06.

C O N T E N T S

<u>Number</u>		<u>Page</u>
Table 1.1	Operating Beds/Operating Bassinets/Beds Occupied - Worldwide	1
Table 1.2	Operating Beds/Operating Bassinets/Beds Occupied - United States	2
Table 1.3	Operating Beds/Operating Bassinets/Beds Occupied - Outside United States	3
Table 2.1	Admissions - Worldwide	4
Table 2.2	Admissions - United States	5
Table 2.3	Admissions - Outside United States	6
Table 3.1	Outpatient Visits and Live Births - Worldwide	7
Table 3.2	Outpatient Visits and Live Births - United States	8
Table 3.3	Outpatient Visits and Live Births - Outside United States	9
	Glossary	10

TABLE 1.1  
DEPARTMENT OF DEFENSE  
SELECTED DATA CONCERNING MEDICAL CARE  
PROVIDED AT FIXED MILITARY FACILITIES  
FOR QUARTER ENDING  
SEPTEMBER 1983

OPERATING BEDS - WORLDWIDE		DOD TOTAL	ARMY FACILITIES	NAVY FACILITIES	AIR FORCE FACILITIES
1.	NUMBER OF OPERATING BEDS	19,122	8,544	4,706	5,872
2.	NUMBER OF OPERATING BASSINETS	2,152	697	377	1,078
3.	NUMBER OF BEDS OCCUPIED (DAILY AVERAGE)	15,073	7,044	3,686	4,343
4.	BEDS OCCUPIED BY US ACTIVE DUTY UNIFORMED PERSONNEL	5,684	2,563	1,662	1,459
	A. MILITARY	5,625	2,549	1,630	1,446
	(1) ARMY	2,462	2,239	68	155
	(2) NAVY-MARINE CORPS	1,770	139	1,498	133
	(3) AIR FORCE	1,393	171	64	1,158
5.	BEDS OCCUPIED BY RETIRED US UNIFORMED PERSONNEL	2,463	1,171	481	811
	A. RETIRED MILITARY	2,439	1,164	470	805
	(1) ARMY	1,055	794	73	168
	(2) NAVY-MARINE CORPS	580	134	321	125
	(3) AIR FORCE	824	236	76	512
	B. OTHER RETIRED UNIFORMED PERSONNEL (PHS,CG,NOAA)	24	7	11	6
6.	BEDS OCCUPIED BY DEPENDENTS OF US ACTIVE DUTY MILITARY PERSONNEL	3,956	1,806	1,011	1,139
	(1) ARMY	1,634	1,457	53	124
	(2) NAVY-MARINE CORPS	1,137	150	887	100
	(3) AIR FORCE	1,185	199	71	915
7.	BEDS OCCUPIED BY DEPENDENTS OF RETIRED AND DECEASED US MILITARY PERSONNEL	2,202	931	440	831
	(1) ARMY	853	610	78	165
	(2) NAVY-MARINE CORPS	535	115	290	130
	(3) AIR FORCE	814	206	72	536
8.	BEDS OCCUPIED BY DEPENDENTS OF OTHER UNIFORMED PERSONNEL (PHS,CG,NOAA)	56	17	23	16
9.	BEDS OCCUPIED BY ALL OTHER BENEFICIARIES	712	556	69	87

TABLE 1-2  
 DEPARTMENT OF DEFENSE  
 SELECTED DATA CONCERNING MEDICAL CARE  
 PROVIDED AT FIXED MILITARY FACILITIES  
 FOR QUARTER ENDING  
 SEPTEMBER 1983

OPERATING BEDS - UNITED STATES		DOD TOTAL	ARMY FACILITIES	NAVY FACILITIES	AIR FORCE FACILITIES
1.	NUMBER OF OPERATING BEDS	15,988	6,692	4,161	5,135
2.	NUMBER OF OPERATING BASSINETS	1,736	487	329	920
3.	NUMBER OF BEDS OCCUPIED (DAILY AVERAGE)	12,929	5,897	3,282	3,750
4.	BEDS OCCUPIED BY US ACTIVE DUTY UNIFORMED PERSONNEL	4,533	1,962	1,430	1,141
A	MILITARY	4,475	1,948	1,399	1,128
(1)	ARMY	1,844	1,685	61	98
(2)	NAVY-MARINE CORPS	1,516	127	1,290	99
(3)	AIR FORCE	1,115	136	48	931
B	OTHER UNIFORMED PERSONNEL (PHS,CG,NOAA)	58	14	31	13
5.	BEDS OCCUPIED BY RETIRED US UNIFORMED PERSONNEL	2,399	1,143	470	786
A	RETIRED MILITARY	2,375	1,136	459	780
(1)	ARMY	1,005	772	70	163
(2)	NAVY-MARINE CORPS	563	132	315	116
(3)	AIR FORCE	807	232	74	501
B	OTHER RETIRED UNIFORMED PERSONNEL (PHS,CG,NOAA)	24	7	11	6
6.	BEDS OCCUPIED BY DEPENDENTS OF US ACTIVE DUTY MILITARY PERSONNEL	3,193	1,386	875	932
(1)	ARMY	1,229	1,094	42	93
(2)	NAVY-MARINE CORPS	1,021	146	793	82
(3)	AIR FORCE	943	146	40	757
7.	BEDS OCCUPIED BY DEPENDENTS OF RETIRED AND DECEASED US MILITARY PERSONNEL	2,157	920	428	809
(1)	ARMY	832	601	72	159
(2)	NAVY-MARINE CORPS	520	114	285	121
(3)	AIR FORCE	805	205	71	529
8.	BEDS OCCUPIED BY DEPENDENTS OF OTHER UNIFORMED PERSONNEL (PHS,CG,NOAA)	55	17	23	15
9.	BEDS OCCUPIED BY ALL OTHER BENEFICIARIES	592	469	56	67

TABLE 1.3  
DEPARTMENT OF DEFENSE  
SELECTED DATA CONCERNING MEDICAL CARE  
PROVIDED AT FIXED MILITARY FACILITIES  
FOR QUARTER ENDING  
SEPTEMBER 1983

OPERATING BEDS - OUTSIDE UNITED STATES		DOD TOTAL	ARMY FACILITIES	NAVY FACILITIES	AIR FORCE FACILITIES
1.	NUMBER OF OPERATING BEDS	3,134	1,852	545	737
2.	NUMBER OF OPERATING BASSINETS	416	210	48	158
3.	NUMBER OF BEDS OCCUPIED (DAILY AVERAGE)	2,144	1,147	404	593
4.	BEDS OCCUPIED BY US ACTIVE DUTY UNIFORMED PERSONNEL	1,151	601	232	318
	A. MILITARY	1,150	601	231	318
	(1) ARMY	618	554	7	57
	(2) NAVY-MARINE CORPS	254	12	208	34
	(3) AIR FORCE	278	35	16	227
	B. OTHER UNIFORMED PERSONNEL (PHS CG NOAA)	1	0	1	0
5.	BEDS OCCUPIED BY RETIRED US UNIFORMED PERSONNEL	64	28	11	25
	A. RETIRED MILITARY	64	28	11	25
	(1) ARMY	30	22	3	5
	(2) NAVY-MARINE CORPS	17	2	6	9
	(3) AIR FORCE	17	4	2	11
	B. OTHER RETIRED UNIFORMED PERSONNEL (PHS CG NOAA)	0	0	0	0
6.	BEDS OCCUPIED BY DEPENDENTS OF US ACTIVE DUTY MILITARY PERSONNEL	763	420	136	207
	(1) ARMY	405	363	11	31
	(2) NAVY-MARINE CORPS	116	4	94	18
	(3) AIR FORCE	242	53	31	158
7.	BEDS OCCUPIED BY DEPENDENTS OF RETIRED AND DECEASED US MILITARY PERSONNEL	45	11	12	22
	(1) ARMY	21	9	6	6
	(2) NAVY-MARINE CORPS	15	1	5	9
	(3) AIR FORCE	9	1	1	7
8.	BEDS OCCUPIED BY DEPENDENTS OF OTHER UNIFORMED PERSONNEL (PHS CG NOAA)	1	0	0	1
9.	BEDS OCCUPIED BY ALL OTHER BENEFICIARIES	120	87	13	20

TABLE 2.1  
DEPARTMENT OF DEFENSE  
SELECTED DATA CONCERNING MEDICAL CARE  
PROVIDED AT FIXED MILITARY FACILITIES  
FOR QUARTER ENDING  
SEPTEMBER 1983

	ADMISSIONS - WORLDWIDE	DOD TOTAL	ARMY FACILITIES	NAVY FACILITIES	AIR FORCE FACILITIES
10	NUMBER OF ADMISSIONS	234,447	103,388	59,333	71,726
11	ADMISSIONS OF US ACTIVE DUTY UNIFORMED PERSONNEL	71,442	29,869	19,101	22,472
	A. MILITARY	70,870	29,748	18,803	22,319
	(1) ARMY	28,572	26,287	700	1,585
	(2) NAVY-MARINE CORPS	19,955	1,504	17,339	1,112
	(3) AIR FORCE	22,343	1,957	17,764	19,622
	B. OTHER UNIFORMED PERSONNEL (PHS, CG, NOAA)	572	121	298	153
12	ADMISSIONS OF RETIRED US UNIFORMED PERSONNEL	27,496	11,884	6,259	9,353
	A. ADMISSIONS OF RETIRED MILITARY	27,252	11,829	6,142	9,281
	(1) ARMY	10,901	8,094	976	1,831
	(2) NAVY-MARINE CORPS	6,885	1,267	4,207	1,411
	(3) AIR FORCE	9,466	2,468	4,959	6,039
	B. ADMISSIONS OF OTHER RETIRED UNIFORMED PERSONNEL (PHS, CG, NOAA)	244	55	117	72
13	ADMISSIONS OF DEPENDENTS OF US ACTIVE DUTY MILITARY PERSONNEL	93,588	41,263	25,919	26,406
	A. ARMY	38,027	34,286	1,224	2,517
	B. NAVY-MARINE CORPS	28,153	3,082	23,038	2,033
	C. AIR FORCE	27,408	3,895	1,657	21,856
14	ADMISSIONS OF DEPENDENTS OF RETIRED AND DECEASED US MILITARY PERSONNEL	30,090	11,897	6,532	11,661
	A. ARMY	11,322	7,983	1,110	2,229
	B. NAVY-MARINE CORPS	7,448	1,361	4,429	1,658
	C. AIR FORCE	11,320	2,553	993	7,774
15	ADMISSIONS OF DEPENDENTS OF OTHER UNIFORMED MILITARY PERSONNEL	1,025	286	477	262
16	ADMISSIONS OF ALL OTHER BENEFICIARIES	10,806	8,189	1,045	1,572

TABLE 2.2  
 DEPARTMENT OF DEFENSE  
 SELECTED DATA CONCERNING MEDICAL CARE  
 PROVIDED AT FIXED MILITARY FACILITIES  
 FOR QUARTER ENDING  
 SEPTEMBER 1983

	ADMISSIONS - UNITED STATES	DOD TOTAL	ARMY FACILITIES	NAVY FACILITIES	AIR FORCE FACILITIES
10.	NUMBER OF ADMISSIONS	- TOTAL	84,480	52,153	62,161
11.	ADMISSIONS OF US ACTIVE DUTY UNIFORMED PERSONNEL	- TOTAL	22,533	15,977	17,883
	A. MILITARY	- TOTAL	22,414	15,691	17,735
	(1) ARMY	21,254	19,650	611	993
	(2) NAVY-MARINE CORPS	16,774	1,363	14,614	797
	(3) AIR FORCE	17,812	1,401	466	15,945
	B. OTHER UNIFORMED PERSONNEL (PHS,CG,NOAA)	553	119	286	148
12.	ADMISSIONS OF RETIRED US UNIFORMED PERSONNEL	- TOTAL	11,602	6,109	9,093
	A. ADMISSIONS OF RETIRED MILITARY	26,564	11,547	5,994	9,023
	(1) ARMY	10,592	7,879	937	1,776
	(2) NAVY-MARINE CORPS	6,697	1,251	4,125	1,321
	(3) AIR FORCE	9,275	2,417	932	5,926
	B. ADMISSIONS OF OTHER RETIRED UNIFORMED PERSONNEL (PHS,CG,NOAA)	240	55	115	70
13.	ADMISSIONS OF DEPENDENTS OF US ACTIVE DUTY MILITARY PERSONNEL	- TOTAL	31,224	22,512	22,393
	A. ARMY	28,390	25,439	986	1,965
	B. NAVY-MARINE CORPS	25,485	2,995	20,669	1,821
	C. AIR FORCE	22,254	2,790	857	18,607
14.	ADMISSIONS OF DEPENDENTS OF RETIRED AND DECEASED US MILITARY PERSONNEL	- TOTAL	11,698	6,314	11,478
	A. ARMY	11,028	7,821	1,021	2,186
	B. NAVY-MARINE CORPS	7,289	1,350	4,325	1,614
	C. AIR FORCE	11,173	2,527	968	7,678
15.	ADMISSIONS OF DEPENDENTS OF OTHER UNIFORMED MILITARY PERSONNEL	- TOTAL	285	467	257
16.	ADMISSIONS OF ALL OTHER BENEFICIARIES	- TOTAL	7,138	774	1,057

TABLE 2.3  
DEPARTMENT OF DEFENSE  
SELECTED DATA CONCERNING MEDICAL CARE  
PROVIDED AT FIXED MILITARY FACILITIES  
FOR QUARTER ENDING  
SEPTEMBER 1983

	ADMISSIONS - OUTSIDE UNITED STATES	DOD TOTAL	ARMY FACILITIES	NAVY FACILITIES	AIR FORCE FACILITIES
10.	NUMBER OF ADMISSIONS	35,653	18,908	7,180	9,565
11.	ADMISSIONS OF US ACTIVE DUTY UNIFORMED PERSONNEL	15,049	7,336	3,124	4,589
	A. MILITARY	15,030	7,334	3,112	4,584
	(1) ARMY	7,318	6,637	89	592
	(2) NAVY-MARINE CORPS	3,181	141	2,725	315
	(3) AIR FORCE	4,531	556	298	3,677
	B. OTHER UNIFORMED PERSONNEL (PHS, CG, NOAA)	19	2	12	5
12.	ADMISSIONS OF RETIRED US UNIFORMED PERSONNEL	692	282	150	260
	A. ADMISSIONS OF RETIRED MILITARY	688	282	148	258
	(1) ARMY	309	215	39	55
	(2) NAVY-MARINE CORPS	188	16	82	90
	(3) AIR FORCE	191	51	27	113
	B. ADMISSIONS OF OTHER RETIRED UNIFORMED PERSONNEL (PHS, CG, NOAA)	4	0	2	2
13.	ADMISSIONS OF DEPENDENTS OF US ACTIVE DUTY MILITARY PERSONNEL	17,459	10,039	3,407	4,013
	A. ARMY	9,637	8,847	238	552
	B. NAVY-MARINE CORPS	2,668	87	2,369	212
	C. AIR FORCE	5,154	1,105	800	3,249
14.	ADMISSIONS OF DEPENDENTS OF RETIRED AND DECEASED US MILITARY PERSONNEL	600	199	218	183
	A. ARMY	294	162	89	43
	B. NAVY-MARINE CORPS	159	11	104	44
	C. AIR FORCE	147	26	25	96
15.	ADMISSIONS OF DEPENDENTS OF OTHER UNIFORMED MILITARY PERSONNEL	16	1	10	5
16.	ADMISSIONS OF ALL OTHER BENEFICIARIES	1,837	1,051	271	515

TABLE 3.1  
 DEPARTMENT OF DEFENSE  
 SELECTED DATA CONCERNING MEDICAL CARE  
 PROVIDED AT FIXED MILITARY FACILITIES  
 FOR QUARTER ENDING  
 SEPTEMBER 1983

OUTPATIENT VISITS - WORLDWIDE		DOD TOTAL	ARMY FACILITIES	NAVY FACILITIES	AIR FORCE FACILITIES
17.	NUMBER OF OUTPATIENT VISITS	- TOTAL	5,207,725	3,135,039	3,937,048
18.	OUTPATIENT VISITS BY US ACTIVE DUTY UNIFORMED PERSONNEL	- TOTAL	2,089,994	1,307,540	1,308,201
	A. MILITARY	- TOTAL	2,085,772	1,294,712	1,304,376
	(1) ARMY	2,053,964	1,991,724	18,700	43,540
	(2) NAVY-MARINE CORPS	1,326,991	40,584	1,258,055	28,352
	(3) AIR FORCE	1,303,905	53,464	17,957	1,232,484
	B. OTHER UNIFORMED PERSONNEL (PHS.CG,NOAA)	- TOTAL	4,222	12,828	3,825
19.	OUTPATIENT VISITS BY RETIRED US UNIFORMED PERSONNEL	- TOTAL	468,237	248,801	402,290
20.	OUTPATIENT VISITS BY DEPENDENTS OF US ACTIVE DUTY UNIFORMED PERSONNEL	- TOTAL	1,628,615	1,007,407	1,456,734
	A. DEPENDENTS OF MILITARY PERSONNEL	- TOTAL	1,619,585	991,388	1,448,186
	(1) ARMY	1,549,454	1,423,767	38,210	87,477
	(2) NAVY-MARINE CORPS	1,058,422	79,338	919,676	59,408
	(3) AIR FORCE	1,451,283	116,480	33,502	1,301,301
	B. DEPENDENTS OF OTHER UNIFORMED PERSONNEL (PHS.CG,NOAA)	- TOTAL	9,030	16,019	8,548
21.	OUTPATIENT VISITS BY DEPENDENTS OF RETIRED AND DECEASED US UNIFORMED PERSONNEL	- TOTAL	572,749	310,975	631,987
22.	OUTPATIENT VISITS BY ALL OTHER BENEFICIARIES	- TOTAL	448,130	260,316	137,836
23.	NUMBER OF LIVE BIRTHS	- TOTAL	11,892	8,576	9,719

TABLE 3.2  
DEPARTMENT OF DEFENSE  
SELECTED DATA CONCERNING MEDICAL CARE  
PROVIDED AT FIXED MILITARY FACILITIES  
FOR QUARTER ENDING  
SEPTEMBER 1983

OUTPATIENT VISITS - UNITED STATES		DOD TOTAL	ARMY FACILITIES	NAVY FACILITIES	AIR FORCE FACILITIES
17.	NUMBER OF OUTPATIENT VISITS	- TOTAL	4,197,596	2,848,917	3,368,833
18.	OUTPATIENT VISITS BY US ACTIVE DUTY UNIFORMED PERSONNEL	- TOTAL	1,550,947	1,165,777	1,034,758
	A. MILITARY	- TOTAL	1,546,737	1,154,039	1,031,234
	(1) ARMY	1,510,689	1,469,630	15,578	25,481
	(2) NAVY-MARINE CORPS	1,183,520	36,895	1,126,926	19,699
	(3) AIR FORCE	1,037,801	40,212	11,535	986,054
	B. OTHER UNIFORMED PERSONNEL (PHS,CG,NOAA)	- TOTAL	4,210	11,738	3,524
19.	OUTPATIENT VISITS BY RETIRED US UNIFORMED PERSONNEL	- TOTAL	458,095	241,298	394,916
20.	OUTPATIENT VISITS BY DEPENDENTS OF US ACTIVE DUTY UNIFORMED PERSONNEL	- TOTAL	1,230,099	911,390	1,196,773
	A. DEPENDENTS OF MILITARY PERSONNEL	- TOTAL	1,221,086	896,102	1,188,564
	(1) ARMY	1,148,726	1,052,520	32,350	63,856
	(2) NAVY-MARINE CORPS	969,350	75,952	840,727	52,671
	(3) AIR FORCE	1,187,676	92,614	23,025	1,072,037
	B. DEPENDENTS OF OTHER UNIFORMED PERSONNEL (PHS,CG,NOAA)	- TOTAL	9,013	15,288	8,209
21.	OUTPATIENT VISITS BY DEPENDENTS OF RETIRED AND DECEASED US UNIFORMED PERSONNEL	- TOTAL	566,012	302,558	624,170
22.	OUTPATIENT VISITS BY ALL OTHER BENEFICIARIES	- TOTAL	392,443	227,894	118,216
23.	NUMBER OF LIVE BIRTHS	- TOTAL	8,874	7,439	8,387

TABLE 3.3  
DEPARTMENT OF DEFENSE  
SELECTED DATA CONCERNING MEDICAL CARE  
PROVIDED AT FIXED MILITARY FACILITIES  
FOR QUARTER ENDING  
SEPTEMBER 1983

	OUTPATIENT VISITS - OUTSIDE UNITED STATES	DOD TOTAL	ARMY FACILITIES	NAVY FACILITIES	AIR FORCE FACILITIES
17.	NUMBER OF OUTPATIENT VISITS	- TOTAL 1,864,466	1,010,129	286,122	568,215
18.	OUTPATIENT VISITS BY US ACTIVE DUTY UNIFORMED PERSONNEL	- TOTAL 954,253	539,047	141,763	273,443
	A. MILITARY	- TOTAL 952,850	539,035	140,673	273,142
	(1) ARMY	543,275	522,094	3,122	18,059
	(2) NAVY-MARINE CORPS	143,471	3,689	131,129	8,653
	(3) AIR FORCE	266,104	13,252	6,422	246,430
	B. OTHER UNIFORMED PERSONNEL (PHS,CG,NOAA)	- TOTAL 1,403	12	1,090	301
19.	OUTPATIENT VISITS BY RETIRED US UNIFORMED PERSONNEL	- TOTAL 25,019	10,142	7,503	7,374
20.	OUTPATIENT VISITS BY DEPENDENTS OF US ACTIVE DUTY UNIFORMED PERSONNEL	- TOTAL 754,494	398,516	96,017	259,961
	A. DEPENDENTS OF MILITARY PERSONNEL	- TOTAL 753,407	398,499	95,286	259,622
	(1) ARMY	400,728	371,247	5,860	23,621
	(2) NAVY-MARINE CORPS	89,072	3,386	78,949	6,737
	(3) AIR FORCE	263,607	23,866	10,477	229,264
	B. DEPENDENTS OF OTHER UNIFORMED PERSONNEL (PHS,CG,NOAA)	- TOTAL 1,087	17	731	339
21.	OUTPATIENT VISITS BY DEPENDENTS OF RETIRED AND DECEASED US UNIFORMED PERSONNEL	- TOTAL 22,971	6,737	8,417	7,817
22.	OUTPATIENT VISITS BY ALL OTHER BENEFICIARIES	- TOTAL 107,729	55,687	32,422	19,620
23.	NUMBER OF LIVE BIRTHS	- TOTAL 5,487	3,018	1,137	1,332

## G L O S S A R Y

Operating Bed. A bed that is currently set up and ready in all respects for the care of a patient. It must include supporting space, equipment and staff to operate under normal circumstances. Excluded, are nursery bassinets and transient patients' beds.

Occupied Bed. A bed assigned as of midnight to a patient, to include a patient on pass or liberty not in excess of 72 hours, and any bassinets assigned to a newborn infant whose mother has been discharged from the hospital. The definition excludes: any bed assigned to a patient subsisting out, on leave, or absent without leave, and any bed occupied by a transient patient.

Operating Bassinet. A bed designed for the care of an infant that is currently set up in the newborn nursery and ready in all respects for use. It must include support space, equipment and staff to operate under normal circumstances. Excluded are infant transporters.

Admission. An admission is the act of placing an individual under treatment or observation in a medical center or a hospital. The day of admission is the day on which the medical center or hospital makes a formal acceptance of the patient who is to be provided with room, board and continuous nursing service in an area of the hospital where patients normally stay at least overnight. If both an admission and discharge occur on the same day, then that day is considered as a day of admission and shall be counted as one occupied bed day. The admission of a newborn is deemed to occur at time of birth.

Outpatient Visits. Visits made to each dispensary or separate, organized clinic of a fixed medical treatment facility for medical advice, examination, diagnosis, treatment, evaluation, consultation, or counseling including visits by military patients who are excused from duty for medical reasons but who have not been admitted for inpatient care in a facility authorized beds for inpatient care and any visits made incident to complete or flight physicals.

Live Births. A live birth is the complete expulsion or extraction from its mother of a product of conception, irrespective of the duration of pregnancy which, after such separation, breathes or shows any other evidence of life such as beating of the heart, pulsation of the umbilical cord, or definite movement of voluntary muscles, whether or not the umbilical cord has been cut, or the placenta is attached; each such product of such a birth is considered liveborn.

